

AUCKLAND INTERNATIONAL AIRPORT

AKL

W17 Season Start Report (International Traffic)

Key Statistics	W16 Operated	W17 -Season Start	Percentage Change
Air Transport Movements	22,853	23,719	▲ 3.8%
Total Seats	5,678,392	5,984,866	▲ 5.4%
Seats per Passenger ATM	248	252	

Contents

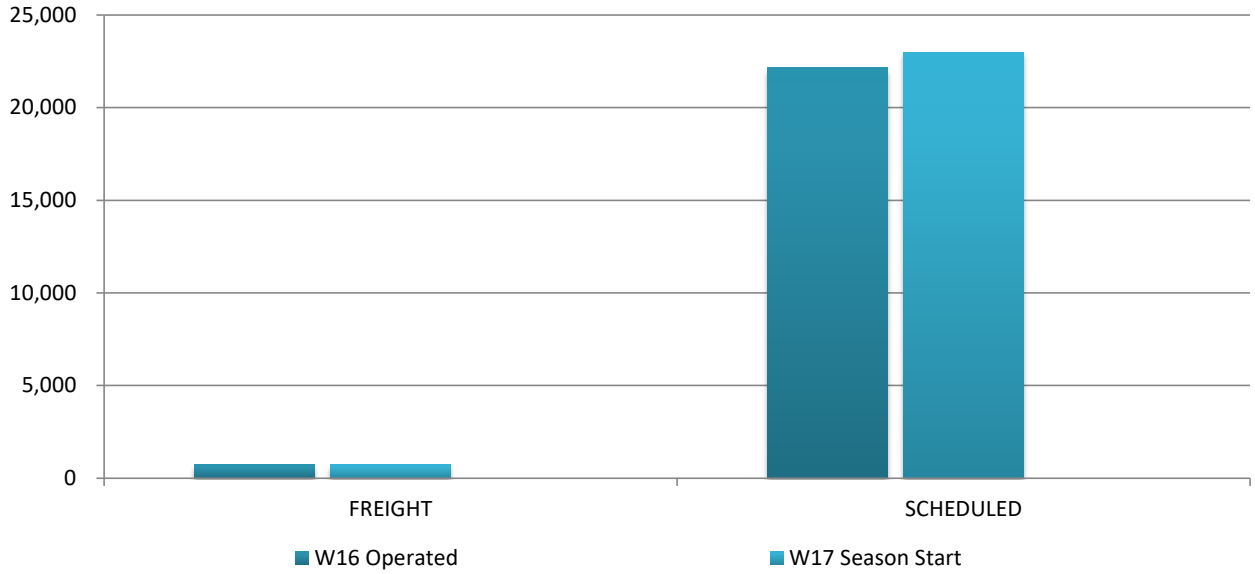
	Page
Movements and Seats by Service Type	2
Week Departure Frequencies by Carrier	3-5
Top 10 Airlines by ATM's and Seats	6
Top 20 Destinations by ATM's and Seats	7
International Terminal - Passengers per 60 Minutes	8-9
International Arrivals - Passengers per 30 Minutes	10
Glossary	11

Data in this report is current as of 19 October 2017

No warranty whether expressed or implied as to the completeness, accuracy, fitness for purpose, or satisfactory quality is given by ACL regarding the information in this report, which is provided by third parties. Accordingly, ACL excludes all liability with regard to such data.

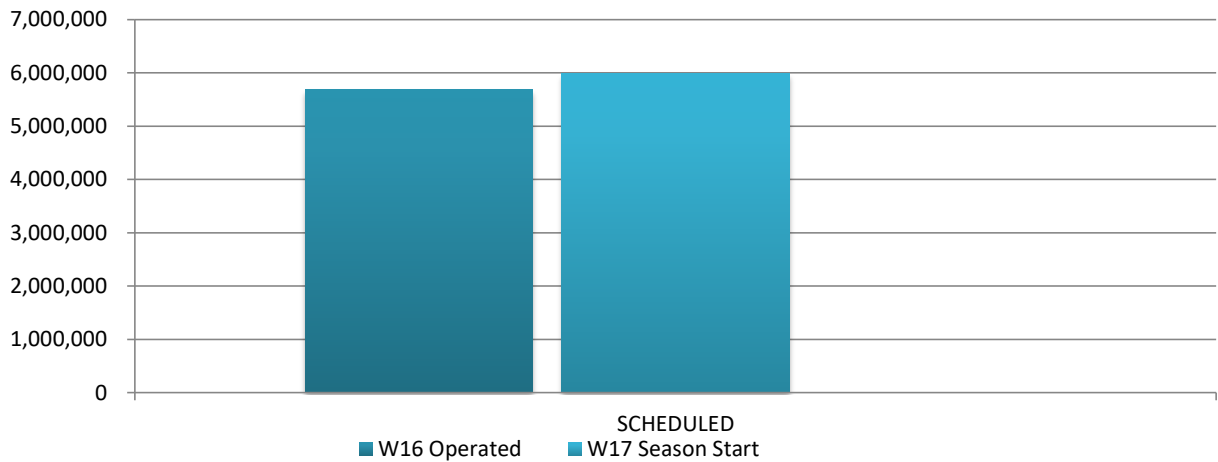
The contents of this report may not be reproduced without the written consent of ACL.

Full Season ATMs by Service Type



	W16 Operated	W17 Season Start	Percentage Change
FREIGHT	712	720	▲ 1%
SCHEDULED	22,141	22,999	▲ 3.9%
TOTAL	22,853	23,719	▲ 3.8%

Full Season Seats by Service Type



	W16 Operated	W17 Season Start	Percentage Change
SCHEDULED	5,678,392	5,984,866	▲ 5.4%
TOTAL	5,678,392	5,984,866	▲ 5.4%

AUCKLAND INTERNATIONAL AIRPORT
PEAK WEEK DEPARTURE FREQUENCIES - BY CARRIER
W17 01 to 07 Jan 2018

	OPERATOR	AIRPORT		W16		W17		SEATS +/-	ATMS +/-
				SEATS	ATMS	SEATS	ATMS		
3U	Sichuan Airlines	CTU	Chengdu	0	0	900	3	900	3
3U Total				0	0	900	3	900	3
AA	American Airlines	LAX	Los Angeles International	1,582	7	1,995	7	413	0
AA Total				1,582	7	1,995	7	413	0
CA	Air China	PEK	Beijing Capital	2,051	7	2,051	7	0	0
CA Total				2,051	7	2,051	7	0	0
CI	China Airlines	TPE	Taipei Chiang Kai Shek	2,763	9	2,149	7	-614	-2
CI Total				2,763	9	2,149	7	-614	-2
CX	Cathay Pacific	HKG	Hong Kong Int'L	4,340	14	4,340	14	0	0
CX Total				4,340	14	4,340	14	0	0
CZ	China Southern Airlines	CAN	Guangzhou Baiyun	3,759	14	3,682	14	-77	0
CZ Total				3,759	14	3,682	14	-77	0
D7	Air Asia X	OOL	Gold Coast Coolangatta	2,639	7	2,639	7	0	0
D7 Total				2,639	7	2,639	7	0	0
EK	Emirates	DXB	Dubai	13,706	28	10,283	21	-3,423	-7
EK Total				13,706	28	10,283	21	-3,423	-7
FJ	Fiji Airways	NAN	Nadi International	2,750	15	2,974	16	224	1
		SUV	Nausori International Airport	240	2	244	2	4	0
FJ Total				2,990	17	3,218	18	228	1
FX	Fedex	CAN	Guangzhou Baiyun	0	1	0	1	0	0
FX Total				0	1	0	1	0	0
GS	Tianjin Airlines	TSN	Tianjin	780	3	780	3	0	0
GS Total				780	3	780	3	0	0
HA	Hawaiian Airlines	HNL	Honolulu International	882	3	1,390	5	508	2
HA Total				882	3	1,390	5	508	2
HJ	Tasman Pacific (DHL)	SYD	Sydney Kingsford Smith	0	0	0	5	0	5
HJ Total				0	0	0	5	0	5
HU	Hainan Airlines	SZX	Shenzhen	780	3	642	3	-138	0
HU Total				780	3	642	3	-138	0
HX	Hong Kong Airlines	HKG	Hong Kong Int'L	2,827	10	4,088	14	1,261	4
HX Total				2,827	10	4,088	14	1,261	4
JQ	Jetstar	MEL	Melbourne	3,060	17	1,620	9	-1,440	-8

AUCKLAND INTERNATIONAL AIRPORT
PEAK WEEK DEPARTURE FREQUENCIES - BY CARRIER
W17 01 to 07 Jan 2018

OPERATOR	AIRPORT	W16		W17		SEATS +/-	ATMS +/-
		SEATS	ATMS	SEATS	ATMS		
	OOL Gold Coast Coolangatta	1,260	7	1,440	8	180	1
	RAR Rarotonga	540	3	540	3	0	0
	SYD Sydney Kingsford Smith	1,620	9	1,440	8	-180	-1
JQ Total		6,480	36	5,040	28	-1,440	-8
KE	Korean Air ICN Seoul Incheon Intl	2,867	8	2,867	8	0	0
KE Total		2,867	8	2,867	8	0	0
LA	Lan Airlines SCL Santiago Arturo Merino Benitez	2,128	7	2,128	7	0	0
	SYD Sydney Kingsford Smith	2,128	7	2,128	7	0	0
LA Total		4,256	14	4,256	14	0	0
MH	Malaysia Airlines KUL Kuala Lumpur Int'L	2,030	7	2,030	7	0	0
MH Total		2,030	7	2,030	7	0	0
MU	China Eastern Airlines PVG Shanghai Pu Dong	1,834	7	1,834	7	0	0
MU Total		1,834	7	1,834	7	0	0
NF	Air Vanuatu VLI Vanuatu	510	3	680	4	170	1
NF Total		510	3	680	4	170	1
NZ	Air New Zealand ADL Adelaide	1,176	7	1,410	6	234	-1
	APW Apia Faleolo	2,284	12	2,754	14	470	2
	BNE Brisbane International	4,004	17	4,074	17	70	0
	EZE Buenos Aires Ministro Pistarini	1,208	4	1,510	5	302	1
	HKG Hong Kong Int'L	2,184	7	2,184	7	0	0
	HND Tokyo Haneda	0	0	1,248	4	1,248	4
	HNL Honolulu International	1,208	4	1,560	5	352	1
	IAH Houston	2,184	7	1,925	7	-259	0
	IUE Niue International Airport	168	1	336	2	168	1
	KIX Osaka Kansai International	906	3	906	3	0	0
	LAX Los Angeles International	2,636	8	2,706	8	70	0
	LHR London Heathrow	2,324	7	2,394	7	70	0
	MEL Melbourne	6,318	26	6,752	27	434	1
	NAN Nadi International	2,692	11	2,835	11	143	0
	NLK Norfolk Island Airport	168	1	0	0	-168	-1
	NOU Noumea	840	5	504	3	-336	-2
	NRT Tokyo Narita	3,392	11	2,114	7	-1,278	-4

AUCKLAND INTERNATIONAL AIRPORT
PEAK WEEK DEPARTURE FREQUENCIES - BY CARRIER
W17 01 to 07 Jan 2018

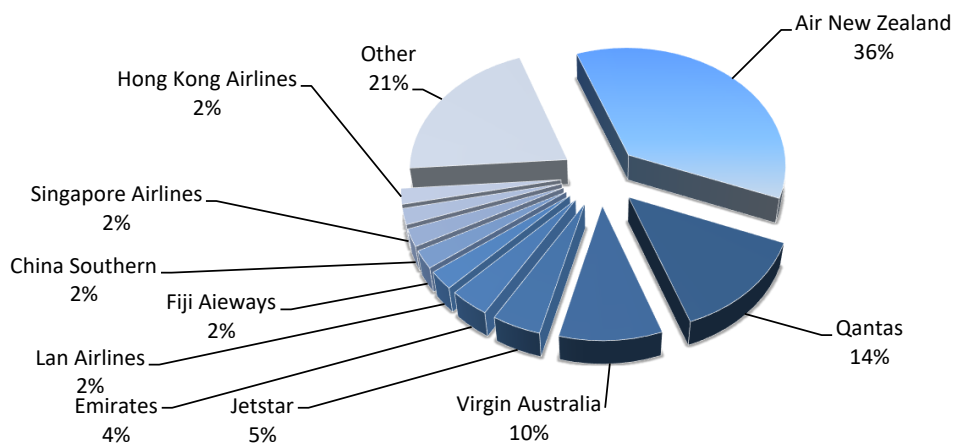
OPERATOR		AIRPORT		W16		W17		SEATS +/-		ATMS +/-	
				SEATS	ATMS	SEATS	ATMS				
	OOL	Gold Coast Coolangatta		1,176	7	1,176	7	0	0		
	PER	Perth		3,020	10	3,020	10	0	0		
	PPT	Papeete Faaa		916	3	916	3	0	0		
	PVG	Shanghai Pu Dong		2,114	7	2,114	7	0	0		
	RAR	Rarotonga		1,348	5	1,386	5	38	0		
	SFO	San Francisco International		2,304	7	2,364	7	60	0		
	SIN	Singapore Changi		2,114	9	2,114	7	0	-2		
	SYD	Sydney Kingsford Smith		9,056	36	9,701	36	645	0		
	TBU	Nuku'Alofa Fua'Amotu Internationa		1,646	9	2,592	12	946	3		
	YVR	Vancouver		2,184	7	2,496	8	312	1		
NZ Total				59,570	231	63,091	235	3,521	4		
OL	Samoa Airlines	APW	Apia Faleolo	0	0	1,190	7	1,190	7		
OL Total				0	0	1,190	7	1,190	7		
ON	Norfolk Airlines (Air Naru)	NLK	Norfolk Island Airport	0	0	130	1	130	1		
ON Total				0	0	130	1	130	1		
PR	Philippine Airlines	MNL	Manila	624	4	762	3	138	-1		
PR Total				624	4	762	3	138	-1		
QF	Qantas	BNE	Brisbane International	2,352	14	2,436	14	84	0		
		MEL	Melbourne	3,657	21	3,654	21	-3	0		
		PER	Perth	542	2	542	2	0	0		
		SYD	Sydney Kingsford Smith	7,065	41	8,876	46	1,811	5		
QF Total				13,616	78	15,508	83	1,892	5		
QR	Qatar Airways	DOH	Doha	0	0	1,813	7	1,813	7		
QR Total				0	0	1,813	7	1,813	7		
SB	Aircalin Air Caledonie Int	NOU	Noumea	632	4	632	4	0	0		
SB Total				632	4	632	4	0	0		
SQ	Singapore Airlines	SIN	Singapore Changi	3,087	11	3,087	12	0	1		
SQ Total				3,087	11	3,087	12	0	1		
TG	Thai Airways International Public Lt	BKK	Bangkok International	1,460	5	2,086	7	626	2		
TG Total				1,460	5	2,086	7	626	2		
TN	Air Tahiti Nui	LAX	Los Angeles International	882	3	792	3	-90	0		
TN Total				882	3	792	3	-90	0		

AUCKLAND INTERNATIONAL AIRPORT
PEAK WEEK DEPARTURE FREQUENCIES - BY CARRIER
W17 01 to 07 Jan 2018

OPERATOR		AIRPORT		W16		W17		SEATS +/-		ATMS +/-	
				SEATS	ATMS	SEATS	ATMS				
UA	United Airlines	SFO	San Francisco International	2,135	8	2,562	7	427		-1	
UA Total				2,135	8	2,562	7	427		-1	
VA	Virgin Australia	APW	Apia Faleolo	1,232	7	880	5	-352		-2	
		BNE	Brisbane International	2,640	15	2,816	16	176		1	
		MEL	Melbourne	1,584	9	1,936	11	352		2	
		OOL	Gold Coast Coolangatta	1,232	7	1,232	7	0		0	
		RAR	Rarotonga	880	5	880	5	0		0	
		SYD	Sydney Kingsford Smith	1,760	10	2,112	12	352		2	
		TBU	Nuku'Alofa Fua'Amotu Internationa	352	2	352	2	0		0	
VA Total				9,680	55	10,208	58	528		3	

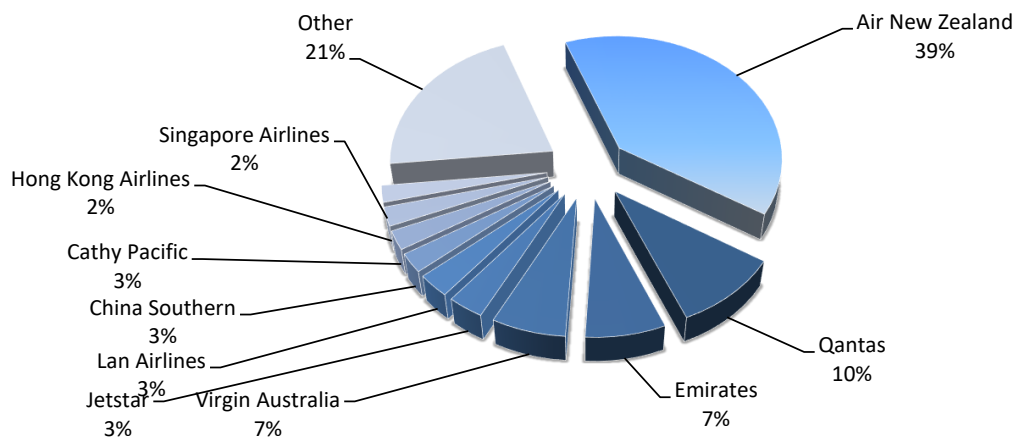
Top 10 Airlines by Air Transport Movements (ATMs)

Airline	Movements
Air New Zealand	8,653
Qantas	3,208
Virgin Australia	2,271
Jetstar	1,085
Emirates	882
Lan Airlines	588
Fiji Airways	574
China Southern	562
Singapore Airlines	510
Hong Kong Airlines	501
Other	4885



Top 10 Airlines by Air Seats

Airline	Seats
Air New Zealand	2,356,421
Qantas	590,690
Emirates	431,886
Virgin Australia	399,520
Jetstar	195,300
Lan Airlines	178,752
China Southern	149,002
Cathy Pacific	146,320
Hong Kong Airlines	146,292
Singapore Airlines	129,300
Other	1,261,383



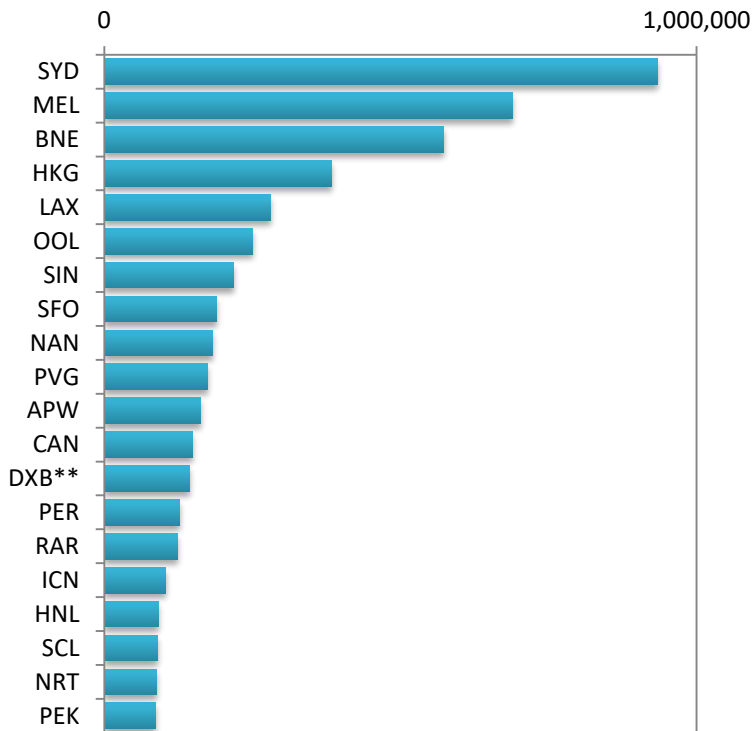
Air Transport Top 20 Movements by Destination



Destination	ATM'S
SYD	4,415
MEL	3,034
BNE	2,307
HKG	1,279
OOL	1,086
LAX	870
APW	852
NAN	845
SIN	658
PVG	616
RAR	565
CAN	562
SFO	540
PER	424
TBU	376
HNL	350
ICN	308
SCL	294
KUL	294
DXB**	294

** EK DXB Direct service

Air Transport Top 20 Seats by Destination

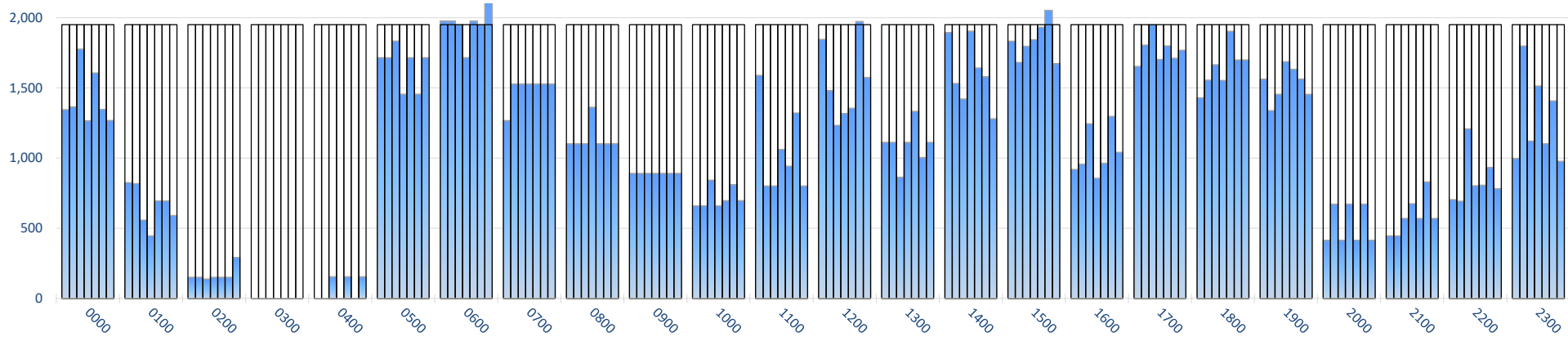


Destination	SEATS
SYD	933,306
MEL	689,436
BNE	573,150
HKG	384,340
LAX	280,632
OOL	249,870
SIN	218,400
SFO	190,074
NAN	183,438
PVG	174,484
APW	163,174
CAN	149,002
DXB**	144,354
PER	127,056
RAR	123,158
ICN	103,446
HNL	90,757
SCL	89,376
NRT	88,808
PEK	86,142

** EK DXB Direct service

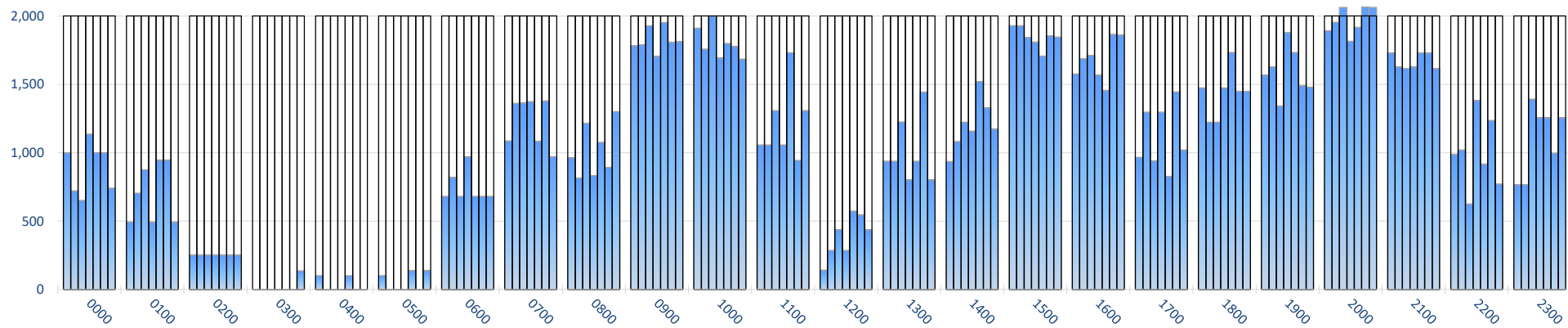
INTERNATIONAL TERMINAL ARRIVALS (PER 60 MINUTES, ROLLING EVERY 5 MINUTES)

Week Movements per Hour - All times LOCAL



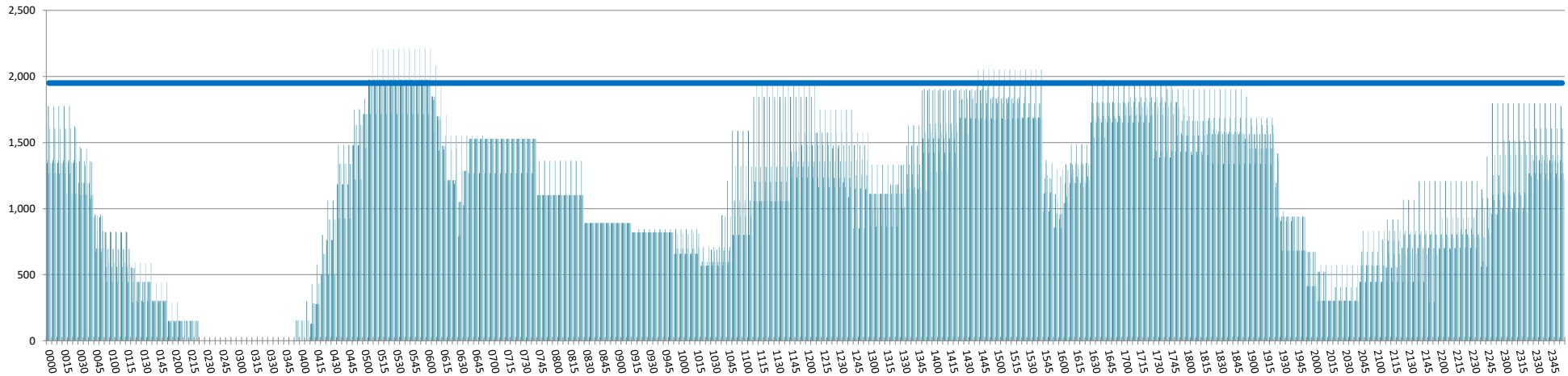
INTERNATIONAL TERMINAL DEPARTURES (PER 60 MINUTES, ROLLING EVERY 5 MINUTES)

Week Movements per Hour - All times LOCAL



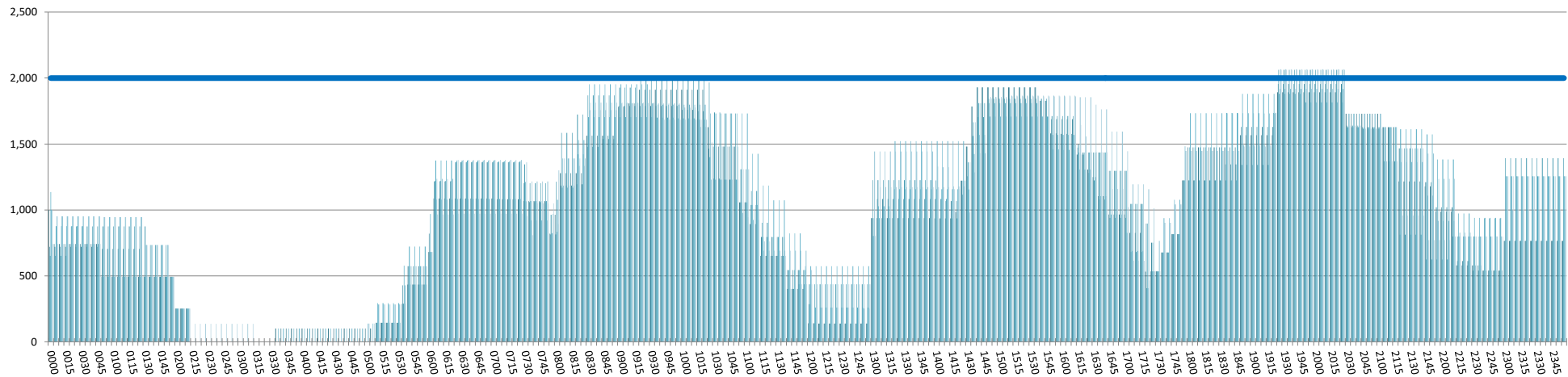
INTERNATIONAL TERMINAL ARRIVALS (PER 60 MINUTES, ROLLING EVERY 5 MINUTES)

Week Movements per Hour - All times LOCAL



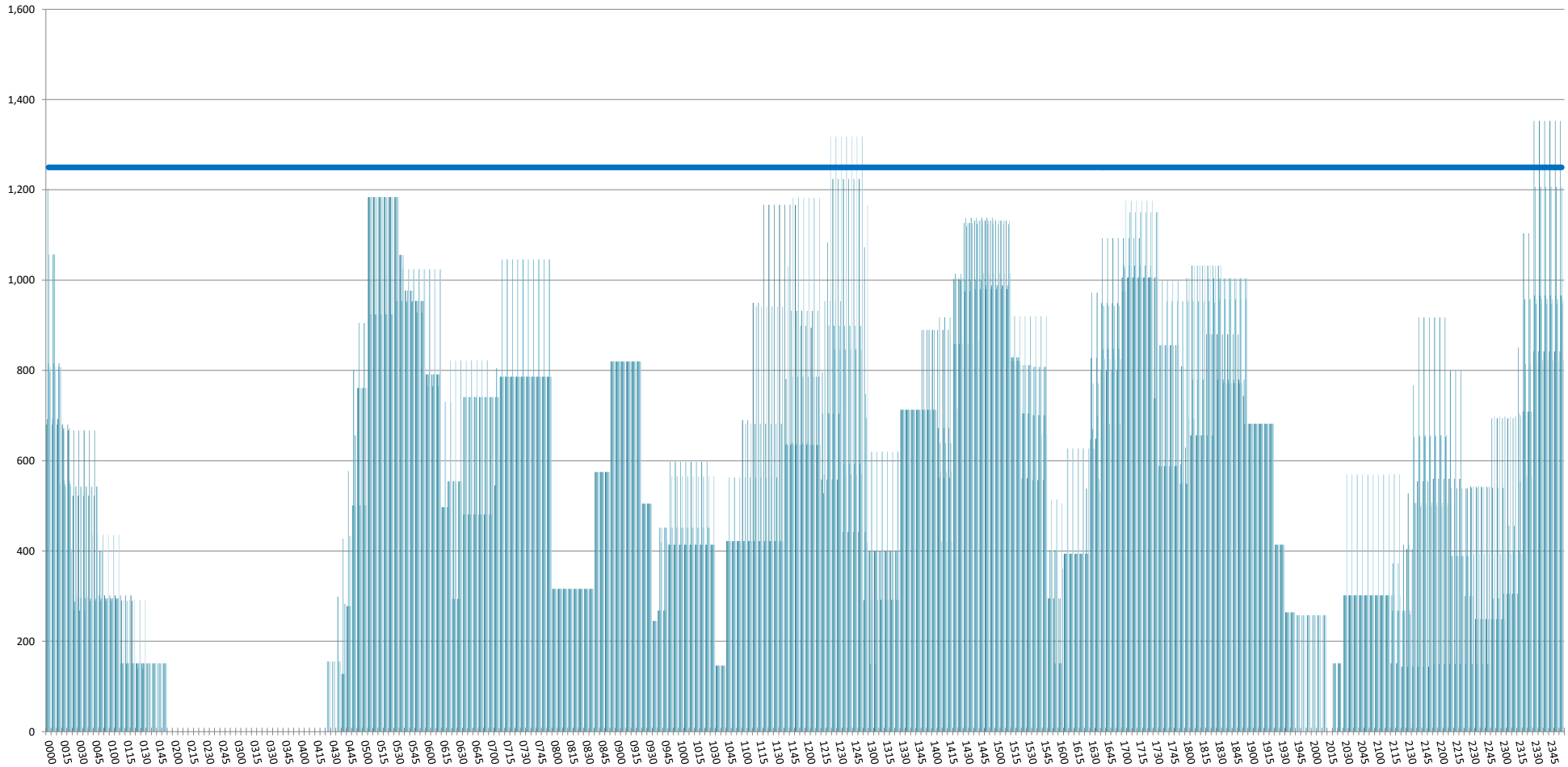
INTERNATIONAL TERMINAL DEPARTURES (PER 60 MINUTES, ROLLING EVERY 5 MINUTES)

Week Movements per Hour - All times LOCAL



INTERNATIONAL TERMINAL ARRIVALS (PER 30 MINUTES, ROLLING EVERY 5 MINUTES)

Week Movements - All times LOCAL



GLOSSARY OF TERMS

Air Transport Movement (ATM)	A scheduled or charter passenger or freight aircraft movement.
Allocation	The allocation of slots such that demand is constrained to fit within declared scheduling limits.
Common Travel Area (CTA)	Services to or from the Republic of Ireland and the Channel Islands.
Demand	The unconstrained demand for slots, prior to any schedule adjustments.
Passenger ATM	A scheduled or charter <u>passenger</u> aircraft movement (ie, excluding all-cargo aircraft movements).
Scheduling Limits	Limiting parameters declared by the Airport Operator used in the coordination process.
Seats	The number of seats based on the aircraft configuration advised by the airline.
Average Week	Peak Week for W17 is 01 to 07 Jan 2018
Data Snapshot	All data used for this report was as held 19 October 2017

GUIDE TO HISTOGRAMS

The histograms show the pattern of traffic by time of day against the appropriate scheduling limit. Each time period consist of seven columns representing the days-of-week, Monday through Sunday.