

CHRISTCHURCH INTERNATIONAL AIRPORT CHC

W17 Start of Season Report (International Traffic)

Key Statistics	W16 Operated	W17 Season Start	Percentage Change	
Air Transport Movements	5,173	5,104	▲	-1.3%
Total Seats	1,036,438	1,024,358	▲	-1.2%
Seats per Passenger ATM	200	201		

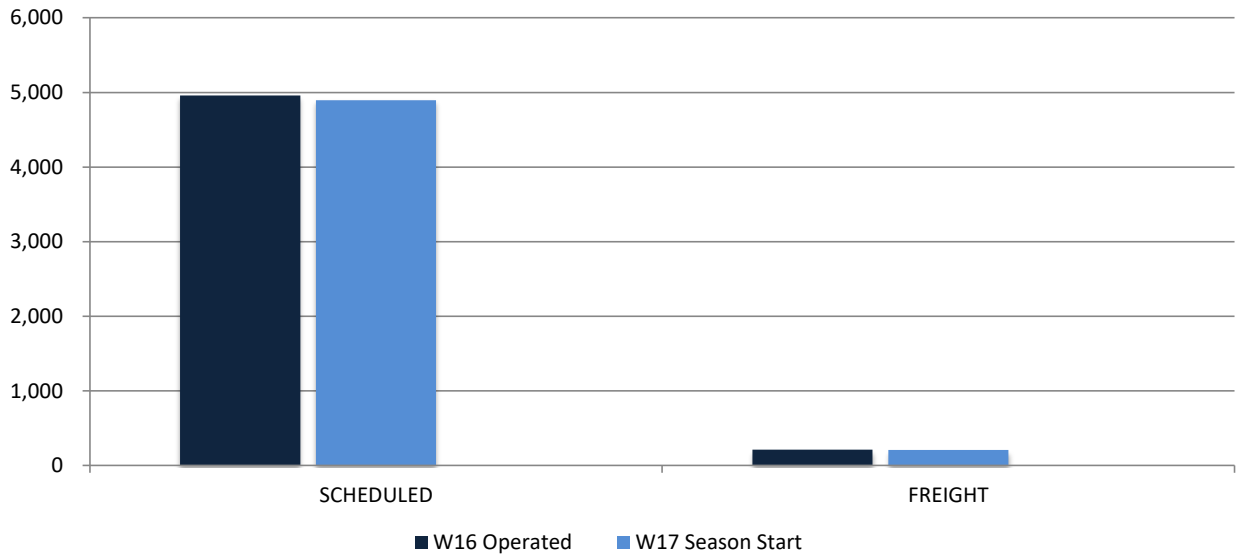
Contents	Page
Movements and Seats by Service Type	2
Peak Week Departure Frequencies by Carrier	3
Top Airlines by ATM's and Seats	4
Top Destinations by ATM's and Seats	5
International Terminal - Passengers per 60 Minutes	6
Glossary	7

Data in this report is current as of 19 October 2017

No warranty whether expressed or implied as to the completeness, accuracy, fitness for purpose, or satisfactory quality is given by ACL regarding the information in this report, which is provided by third parties. Accordingly, ACL excludes all liability with regard to such data.

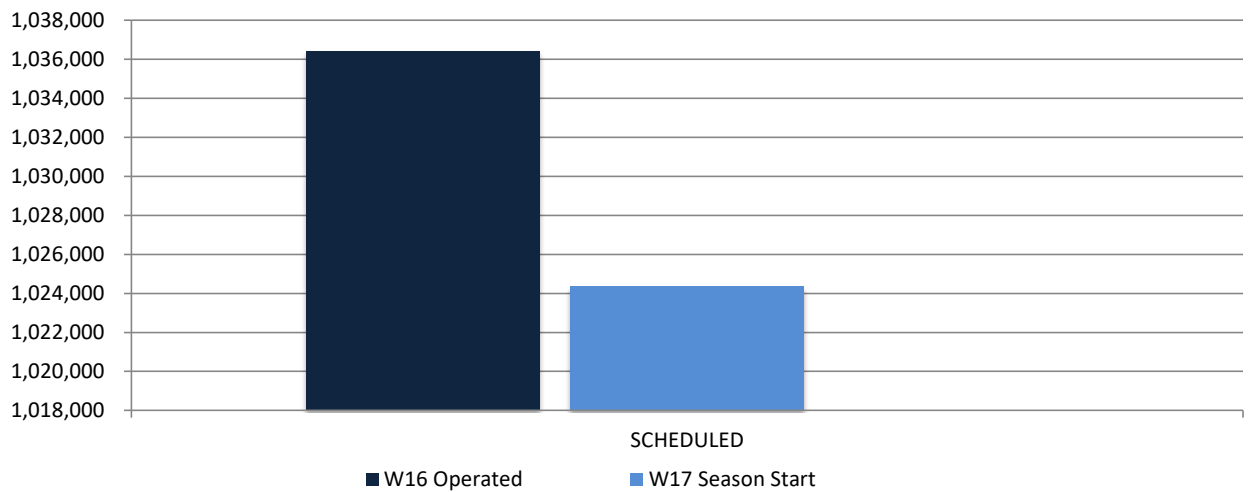
The contents of this report may not be reproduced without the written consent of ACL.

Full Season ATMs by Service Type



	W16 Operated	W17 Season Start	Percentage Change
SCHEDULED	4,959	4,894	▲ -1.3%
FREIGHT	214	210	▲ -1.9%
TOTAL	5,173	5,104	▲ -1.3%

Full Season Seats by Service Type



	W16 Operated	W17 Season Start	Percentage Change
SCHEDULED	1,036,438	1,024,358	▲ -1.2%
TOTAL	1,036,438	1,024,358	▲ -1.2%

CHRISTCHURCH INTERNATIONAL AIRPORT

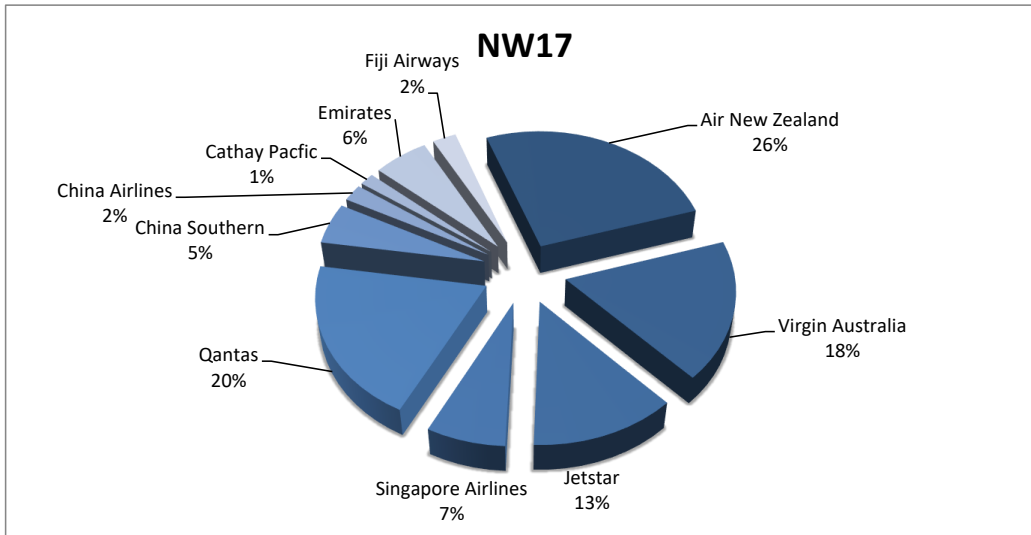
PEAK WEEK DEPARTURE FREQUENCIES - BY CARRIER

01 to 07 Jan 18

	OPERATOR	AIRPORT	W16		W17		SEATS +/-	ATMS +/-
			SEATS	ATMS	SEATS	ATMS		
CI	China Airlines	TPE Taipei Chiang Kai Shek	1,842	6	921	3	-921	-3
CI Total			1,842	6	921	3	-921	-3
CX	Cathay Pacific	HKG Hong Kong Int'L	0	0	840	3	840	3
CX Total			0	0	840	3	840	3
CZ	China Southern Airlines	CAN Guangzhou Baiyun	1,140	5	1,596	7	456	2
CZ Total			1,140	5	1,596	7	456	2
EK	Emirates	DXB Dubai	3,612	7	3,612	7	0	0
EK Total			3,612	7	3,612	7	0	0
FJ	Fiji Airways	NAN Nadi International	486	3	486	3	0	0
FJ Total			486	3	486	3	0	0
JQ	Jetstar	MEL Melbourne	1,260	7	1,260	7	0	0
		OOL Gold Coast Coolangatta	720	4	720	4	0	0
		SYD Sydney Kingsford Smith	1,620	9	1,080	6	-540	-3
JQ Total			3,600	20	3,060	17	-540	-3
NZ	Air New Zealand	BNE Brisbane International	1,344	8	1,344	8	0	0
		MEL Melbourne	1,848	11	1,848	11	0	0
		OOL Gold Coast Coolangatta	336	2	336	2	0	0
		PER Perth	604	2	604	2	0	0
		SYD Sydney Kingsford Smith	2,016	12	2,016	12	0	0
NZ Total			6,148	35	6,148	35	0	0
QF	Qantas	BNE Brisbane International	1,176	7	1,176	7	0	0
		MEL Melbourne	1,176	7	1,218	7	42	0
		SYD Sydney Kingsford Smith	1,176	12	1,218	12	42	0
QF Total			3,528	26	3,612	26	84	0
SQ	Singapore Airlines	SIN Singapore Changi	2,710	10	2,710	10	0	0
SQ Total			2,710	10	2,710	10	0	0
VA	Virgin Australia	BNE Brisbane International	1,760	10	1,584	9	-176	-1
		MEL Melbourne	1,584	9	1,584	9	0	0
		SYD Sydney Kingsford Smith	1,056	6	1,056	6	0	0
VA Total			4,400	25	4,224	24	-176	-1

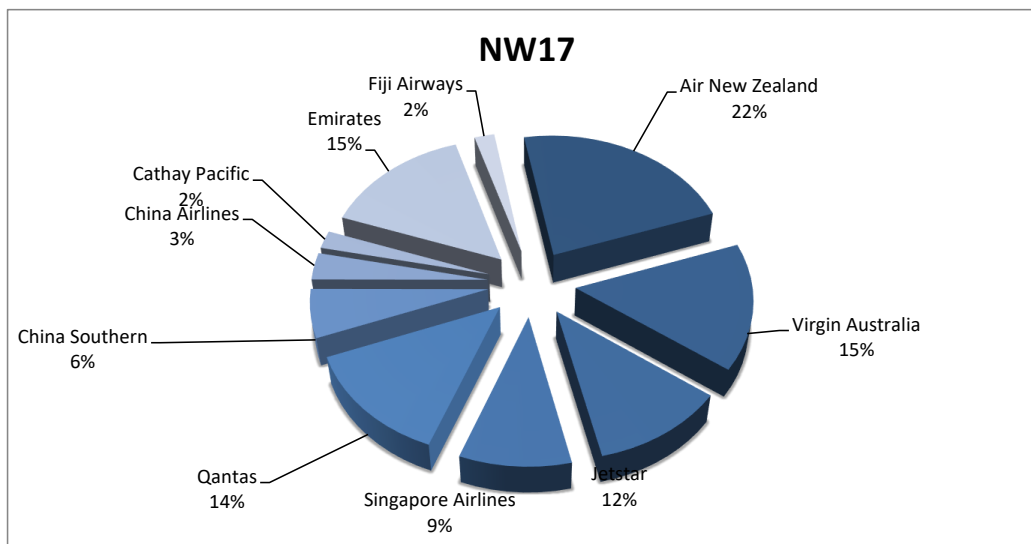
Airlines by Air Transport Movements (ATMs)

Airline	NW16	NW17
Air New Zealand	1,305	1,316
Virgin Australia	955	897
Jetstar	684	653
Singapore Airlines	378	354
Qantas	1,000	1,014
China Southern	190	262
China Airlines	250	108
Cathay Pacific	0	78
Emirates	294	294
Fiji Airways	112	126

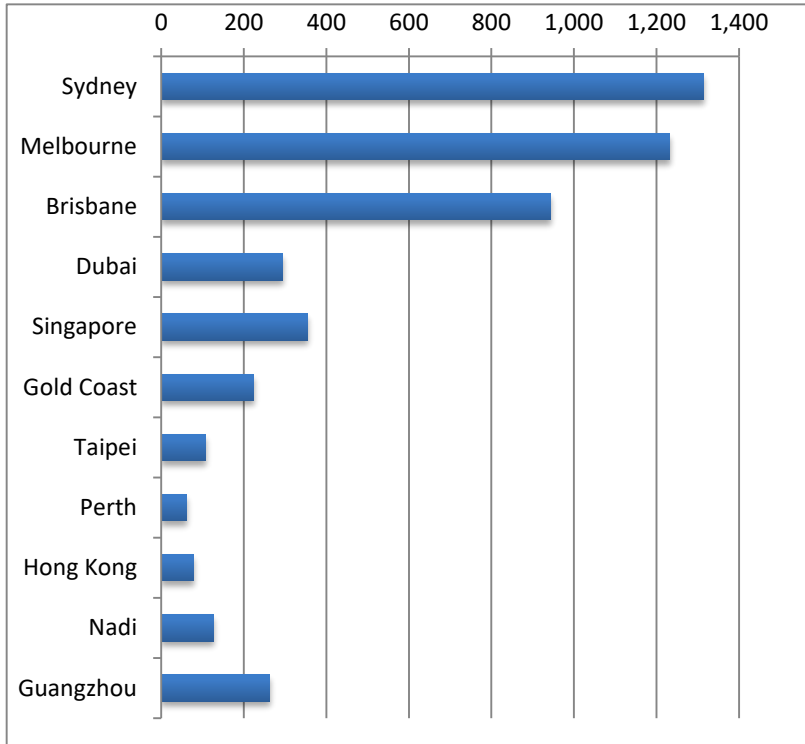


Airlines by Air Seats

Airline	NW16	NW17
Air New Zealand	227,380	229,396
Virgin Australia	164,384	156,628
Jetstar	121,500	117,540
Singapore Airlines	99,728	95,934
Qantas	133,728	137,484
China Southern	43,320	59,736
China Airlines	76,750	33,156
Cathay Pacific	0	21,840
Emirates	151,380	151,704
Fiji Airways	17,740	20,412

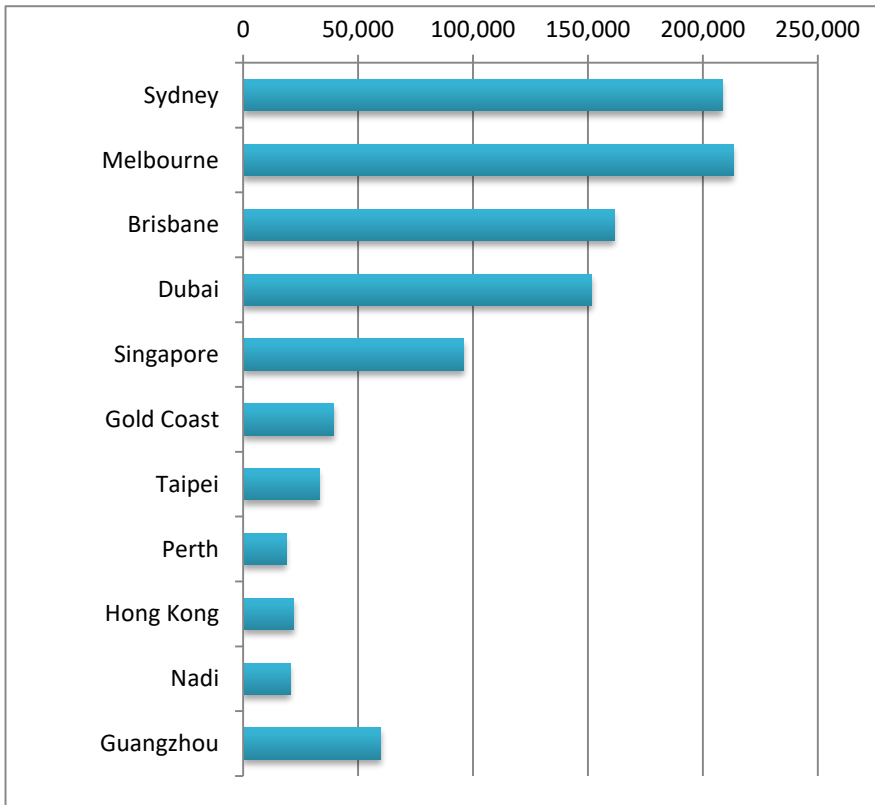


Air Transport Movements by Destination



Destination	NW16	NW17
Sydney	1,350	1,314
Melbourne	1,240	1,232
Brisbane	967	943
Dubai	294	294
Singapore	373	354
Gold Coast	222	224
Taipei	250	108
Perth	62	62
Hong Kong	0	78
Nadi	112	126
Guangzhou	190	262

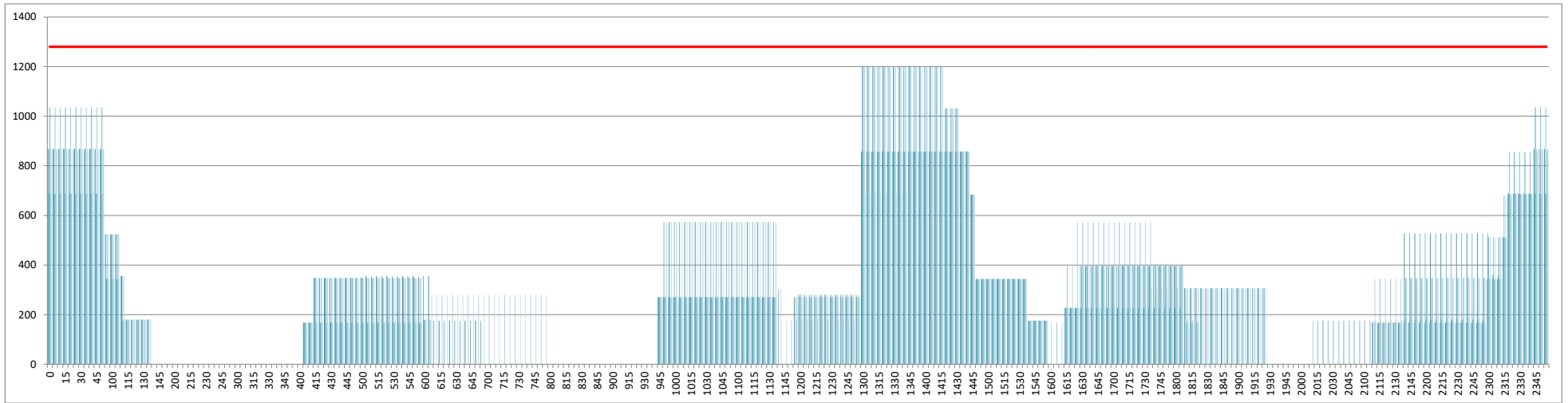
Air Transport Seats by Destination



Destination	NW16	NW17
Sydney	213,940	208,398
Melbourne	211,252	213,146
Brisbane	163,768	161,468
Dubai	151,380	151,704
Singapore	99,728	95,934
Gold Coast	39,132	39,312
Taipei	76,750	33,156
Perth	18,724	18,724
Hong Kong	0	21,840
Nadi	17,740	20,412
Guangzhou	43,320	59,736

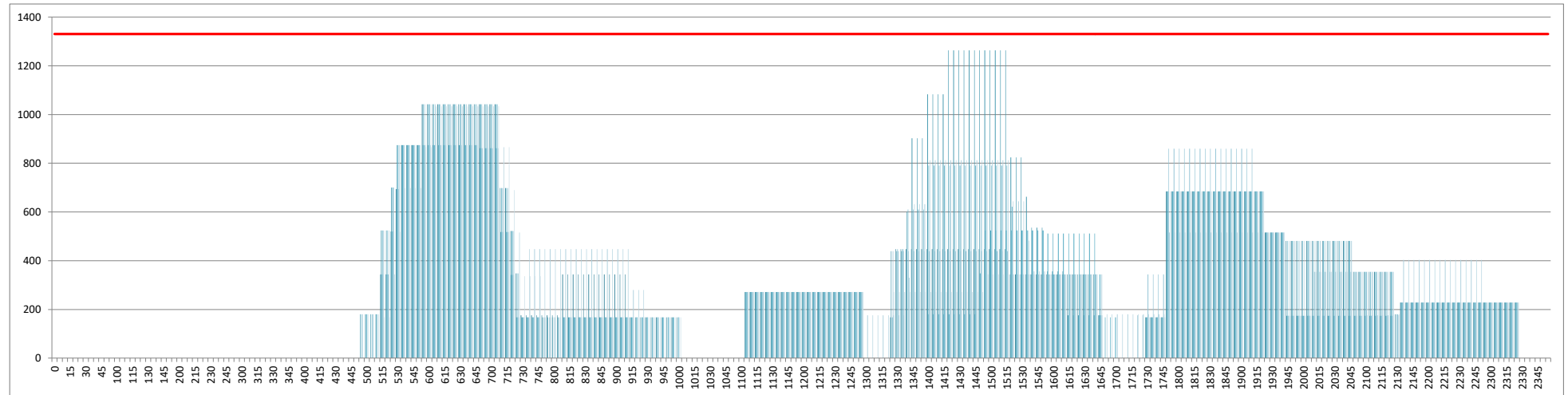
INTERNATIONAL TERMINAL ARRIVALS (PER 60 MINUTES)

Week Movements per Hour - All times LOCAL



INTERNATIONAL TERMINAL DEPARTURES (PER 60 MINUTES)

Week Movements per Hour - All times LOCAL



GLOSSARY OF TERMS

Air Transport Movement (ATM)	A scheduled or charter passenger or freight aircraft movement.
Allocation	The allocation of slots such that demand is constrained to fit within declared scheduling limits.
Common Travel Area (CTA)	Services to or from the Republic of Ireland and the Channel Islands.
Demand	The unconstrained demand for slots, prior to any schedule adjustments.
Passenger ATM	A scheduled or charter <u>passenger</u> aircraft movement (ie, excluding all-cargo aircraft movements).
Scheduling Limits	Limiting parameters declared by the Airport Operator used in the coordination process.
Seats	The number of seats based on the aircraft configuration advised by the airline.
Average Week	Week for W17 is 01 to 07 January 2018
Data Snapshot	All data used for this report was as held 19 October 2017

GUIDE TO HISTOGRAMS

The histograms show the pattern of traffic by time of day against the appropriate scheduling limit. Each time period consist of seven columns representing the days-of-week, Monday through Sunday.