

# Stansted Airport (STN)

## Winter 2017/18 (W17)



### Start of Season Report

Report Date: Tue 26-Sep-2017

#### Headlines

	W17 Start	vs. W16 Start	vs. W16 End
Total Air Transport Movements (Passenger & Freight)	68,822	▲ 13.1%	▲ 13.3%
Total Passenger Air Transport Movements	63,448	▲ 14.7%	▲ 14.8%
Total Passenger Air Transport Movement Seats	11,583,342	▲ 14.7%	▲ 14.8%
Average Seats per Passenger Air Transport Movement	183	▼ 0.0%	▲ 0.0%
Percentage of allocated slots cleared as requested (OK)	97%		

#### Contents

Page	Content
2	Runway Scheduling Limits
3	ATM Allocation by Operator (Full season and Peak Week Comparison)
4	Peak Week - Allocation and Slot Adjustment Distribution by Operator
5	Significant Route Changes
6	Full Season - ATM Analysis
7	Full Season - PATM Seats Analysis
8	Full Season - Terminal Analysis
9	Full Season - Aircraft Size Analysis
10	Full Season - Seasonality
11	Peak Week - Hourly Runway Demand
12	Peak Week - Hourly Runway Allocation
13	Peak Week - Hourly Runway Allocation Comparison (W17 Start vs. W16 Start)
14	Peak Week - Hourly Runway Allocation Comparison (W17 Start vs. W16 End)
15	Peak Week Histogram - Departure Passengers (T60) - All Terminals - All Operators
16	Peak Week Histogram - Departure Passengers (T60/15) - All Terminals - All Operators
17	Peak Week Histogram - Departure Passengers (T120/15) - All Terminals - All Operators
18	Peak Week Histogram - Arrival Passengers (T60) - 1I - All Operators
19	Peak Week Histogram - Arrival Passengers (T60/15) - 1I - All Operators
20	Peak Week Histogram - Arrival Passengers (T120/15) - 1I - All Operators
21	Glossary

W16 scheduling season runs from Sun 30-Oct-2016 to Sat 25-Mar-2017 (147 days).

W17 scheduling season runs from Sun 29-Oct-2017 to Sat 24-Mar-2018 (147 days).

#### Disclaimer

No warranty whether expressed or implied as to the completeness, accuracy, fitness for purpose, or satisfactory quality is given by ACL regarding the information in this report, which is provided by third parties. Accordingly, ACL excludes all liability with regard to such data.

The contents of this report may not be reproduced without the written consent of ACL.





# Peak Week - Allocation and Slot Adjustment Distribution by Operator



Schedule: W17 Start

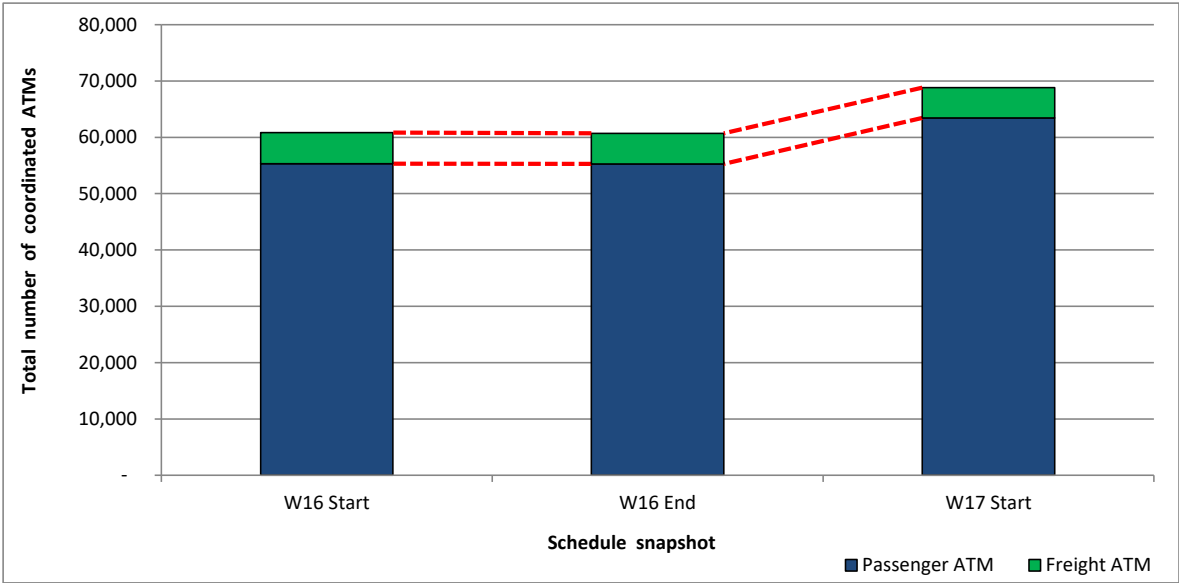
Operator	W17 allocated ATMs	SLOT ADJUSTMENTS (MINUTES OFF REQUESTED TIME)														Requests with NO slot allocated	
		0	5	10	15	20	25	30	35	40	45	50	55	60	>60		
Air Mediterranean	8	100.0%	0.0%	0.0%	0.0%	0.0%	0.0%	0.0%	0.0%	0.0%	0.0%	0.0%	0.0%	0.0%	0.0%	0.0%	-
Air Moldova	8	100.0%	0.0%	0.0%	0.0%	0.0%	0.0%	0.0%	0.0%	0.0%	0.0%	0.0%	0.0%	0.0%	0.0%	0.0%	-
Albawings	6	0.0%	0.0%	33.3%	0.0%	0.0%	33.3%	0.0%	0.0%	0.0%	0.0%	0.0%	33.3%	0.0%	0.0%	0.0%	-
Allied Air	4	100.0%	0.0%	0.0%	0.0%	0.0%	0.0%	0.0%	0.0%	0.0%	0.0%	0.0%	0.0%	0.0%	0.0%	0.0%	-
Asiana Airlines	4	100.0%	0.0%	0.0%	0.0%	0.0%	0.0%	0.0%	0.0%	0.0%	0.0%	0.0%	0.0%	0.0%	0.0%	0.0%	-
ASL Airlines Belgium	18	100.0%	0.0%	0.0%	0.0%	0.0%	0.0%	0.0%	0.0%	0.0%	0.0%	0.0%	0.0%	0.0%	0.0%	0.0%	-
Astral Aviation	4	100.0%	0.0%	0.0%	0.0%	0.0%	0.0%	0.0%	0.0%	0.0%	0.0%	0.0%	0.0%	0.0%	0.0%	0.0%	-
Atlas Air	6	100.0%	0.0%	0.0%	0.0%	0.0%	0.0%	0.0%	0.0%	0.0%	0.0%	0.0%	0.0%	0.0%	0.0%	0.0%	-
AtlasGlobal	14	100.0%	0.0%	0.0%	0.0%	0.0%	0.0%	0.0%	0.0%	0.0%	0.0%	0.0%	0.0%	0.0%	0.0%	0.0%	-
Aurigny Air Services	8	100.0%	0.0%	0.0%	0.0%	0.0%	0.0%	0.0%	0.0%	0.0%	0.0%	0.0%	0.0%	0.0%	0.0%	0.0%	-
Austrian Airlines	2	0.0%	0.0%	50.0%	0.0%	0.0%	50.0%	0.0%	0.0%	0.0%	0.0%	0.0%	0.0%	0.0%	0.0%	0.0%	-
bmi regional	26	73.1%	3.8%	11.5%	3.8%	3.8%	0.0%	0.0%	3.8%	0.0%	0.0%	0.0%	0.0%	0.0%	0.0%	0.0%	-
British Airways	10	100.0%	0.0%	0.0%	0.0%	0.0%	0.0%	0.0%	0.0%	0.0%	0.0%	0.0%	0.0%	0.0%	0.0%	0.0%	-
CargoLogicAir	1	100.0%	0.0%	0.0%	0.0%	0.0%	0.0%	0.0%	0.0%	0.0%	0.0%	0.0%	0.0%	0.0%	0.0%	0.0%	-
Cargolux	14	100.0%	0.0%	0.0%	0.0%	0.0%	0.0%	0.0%	0.0%	0.0%	0.0%	0.0%	0.0%	0.0%	0.0%	0.0%	-
China Southern	6	33.3%	0.0%	33.3%	0.0%	33.3%	0.0%	0.0%	0.0%	0.0%	0.0%	0.0%	0.0%	0.0%	0.0%	0.0%	-
Cobalt Air	10	100.0%	0.0%	0.0%	0.0%	0.0%	0.0%	0.0%	0.0%	0.0%	0.0%	0.0%	0.0%	0.0%	0.0%	0.0%	-
Dubai Air Wing	-	-	-	-	-	-	-	-	-	-	-	-	-	-	-	-	-
EasyJet	376	99.2%	0.0%	0.0%	0.3%	0.3%	0.3%	0.0%	0.0%	0.0%	0.0%	0.0%	0.0%	0.0%	0.0%	0.0%	-
Enter Air	5	80.0%	0.0%	0.0%	0.0%	0.0%	0.0%	0.0%	0.0%	0.0%	20.0%	0.0%	0.0%	0.0%	0.0%	0.0%	-
Ethihad Airways	6	100.0%	0.0%	0.0%	0.0%	0.0%	0.0%	0.0%	0.0%	0.0%	0.0%	0.0%	0.0%	0.0%	0.0%	0.0%	-
European Air Transport (DHL)	8	100.0%	0.0%	0.0%	0.0%	0.0%	0.0%	0.0%	0.0%	0.0%	0.0%	0.0%	2.0%	0.0%	0.0%	0.0%	-
Eurowings	102	88.2%	0.0%	0.0%	0.0%	0.0%	0.0%	0.0%	2.0%	0.0%	0.0%	0.0%	2.0%	0.0%	7.8%	0.0%	-
Federal Express	82	100.0%	0.0%	0.0%	0.0%	0.0%	0.0%	0.0%	0.0%	0.0%	0.0%	0.0%	0.0%	0.0%	0.0%	0.0%	-
Flybe	-	-	-	-	-	-	-	-	-	-	-	-	-	-	-	-	-
Germanwings	-	-	-	-	-	-	-	-	-	-	-	-	-	-	-	-	-
Jet2.com	81	96.3%	0.0%	0.0%	1.2%	0.0%	0.0%	1.2%	0.0%	0.0%	0.0%	0.0%	0.0%	0.0%	0.0%	1.2%	-
Loganair	20	100.0%	0.0%	0.0%	0.0%	0.0%	0.0%	0.0%	0.0%	0.0%	0.0%	0.0%	0.0%	0.0%	0.0%	0.0%	-
Martinair	4	100.0%	0.0%	0.0%	0.0%	0.0%	0.0%	0.0%	0.0%	0.0%	0.0%	0.0%	0.0%	0.0%	0.0%	0.0%	-
Pegasus Airlines	46	100.0%	0.0%	0.0%	0.0%	0.0%	0.0%	0.0%	0.0%	0.0%	0.0%	0.0%	0.0%	0.0%	0.0%	0.0%	-
Qatar Airways	16	100.0%	0.0%	0.0%	0.0%	0.0%	0.0%	0.0%	0.0%	0.0%	0.0%	0.0%	0.0%	0.0%	0.0%	0.0%	-
Ryanair	2,463	96.0%	1.2%	0.5%	0.4%	0.1%	0.2%	0.1%	0.3%	0.1%	0.1%	0.2%	0.1%	0.0%	0.6%	0.0%	-
Safari Express Cargo	-	-	-	-	-	-	-	-	-	-	-	-	-	-	-	-	-
Small Planet Airlines	2	100.0%	0.0%	0.0%	0.0%	0.0%	0.0%	0.0%	0.0%	0.0%	0.0%	0.0%	0.0%	0.0%	0.0%	0.0%	-
Small Planet Airlines Germany	-	-	-	-	-	-	-	-	-	-	-	-	-	-	-	-	-
Thomas Cook (UK)	10	90.0%	0.0%	0.0%	0.0%	0.0%	0.0%	0.0%	0.0%	0.0%	0.0%	0.0%	10.0%	0.0%	0.0%	0.0%	-
Thomson Airways	20	100.0%	0.0%	0.0%	0.0%	0.0%	0.0%	0.0%	0.0%	0.0%	0.0%	0.0%	0.0%	0.0%	0.0%	0.0%	-
Titan Airways	19	100.0%	0.0%	0.0%	0.0%	0.0%	0.0%	0.0%	0.0%	0.0%	0.0%	0.0%	0.0%	0.0%	0.0%	0.0%	-
TNT Airways	-	-	-	-	-	-	-	-	-	-	-	-	-	-	-	-	-
UPS Airlines	28	100.0%	0.0%	0.0%	0.0%	0.0%	0.0%	0.0%	0.0%	0.0%	0.0%	0.0%	0.0%	0.0%	0.0%	0.0%	-
West Atlantic Cargo	30	100.0%	0.0%	0.0%	0.0%	0.0%	0.0%	0.0%	0.0%	0.0%	0.0%	0.0%	0.0%	0.0%	0.0%	0.0%	-
<b>TOTAL</b>	<b>3,467</b>	<b>96.0%</b>	<b>0.9%</b>	<b>0.6%</b>	<b>0.4%</b>	<b>0.2%</b>	<b>0.2%</b>	<b>0.2%</b>	<b>0.3%</b>	<b>0.1%</b>	<b>0.1%</b>	<b>0.1%</b>	<b>0.2%</b>	<b>0.0%</b>	<b>0.7%</b>	<b>-</b>	<b>-</b>

Operators with 0 'allocated ATMs' and 0 'Requests with NO slot allocated' in W17, are included in this list due to having slots allocated in either W16 Start or W16 End schedules.

## Significant Route Changes

Operator	Category	Description of change from W16 schedule to W17 schedule
AlbaStar	NEW	Services to TIA
BA Cityflyer	NEW	Services to LIN
bmi regional	NEW	Services to LDY
CargoLogicAir	NEW	Services to FRA and MEX
Freebird Airlines	CANCELLED	Services to ADB and AYT
Ryanair	NEW	AAL, BZR, CAG, CFU, CPH, FCO, FNI, FRA, NAP, NCE, OMR, PDL, PED, TRF and ZAD
Ryanair	CANCELLED	IBZ
Arkia	NEW	Services to TLV
Jet2.com	NEW	Services to ACE, AGP, ALC, FAO, FNC, FUE, GNB, GRO, GVA, ILD, LPA, LYS, PFO
Jet2.com	NEW	SZG, TFS
Thomas Cook (UK)	NEW	Services to AYT
Air Mediterranean	NEW	Services to ATH
West Atlantic Cargo	CANCELLED	ABZ, EI, EMA, GCI, JER, NCL
Thomson Airways	CANCELLED	CUN, GVA

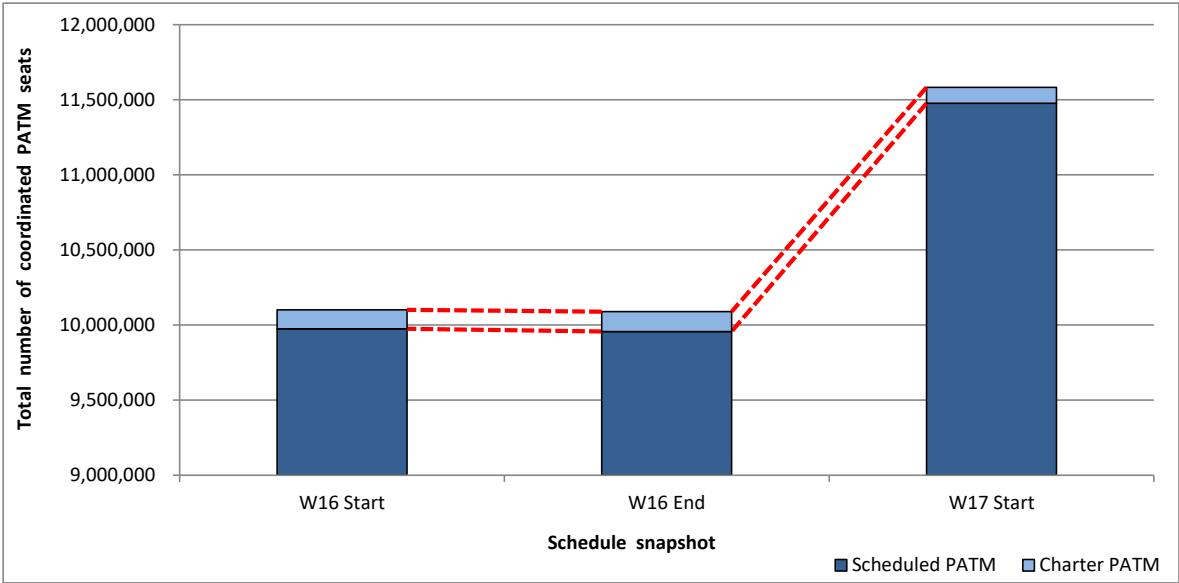
Total ATMs: Passenger ATMs vs. Freight ATMs



# Full Season - PATM Seats Analysis



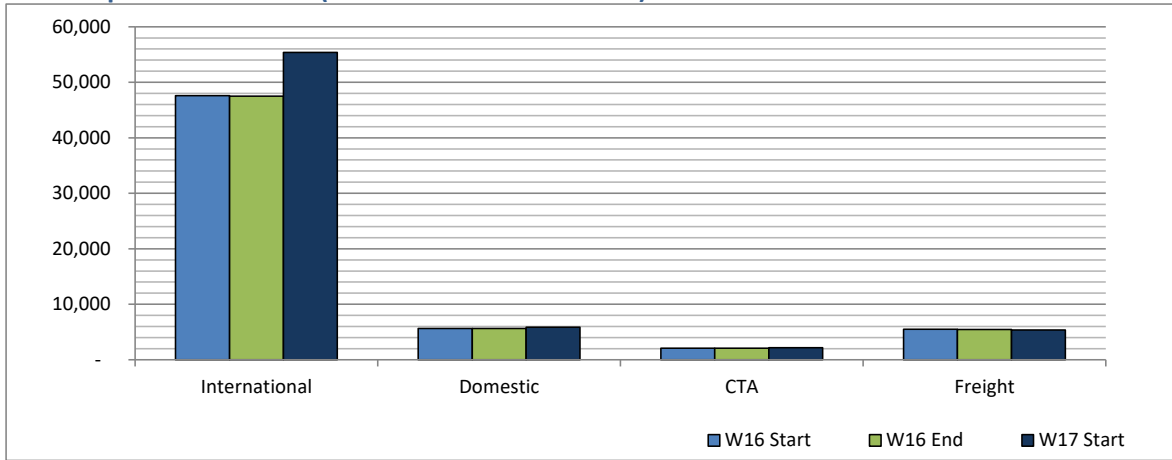
Total Passenger ATM seats: Scheduled vs. Charter



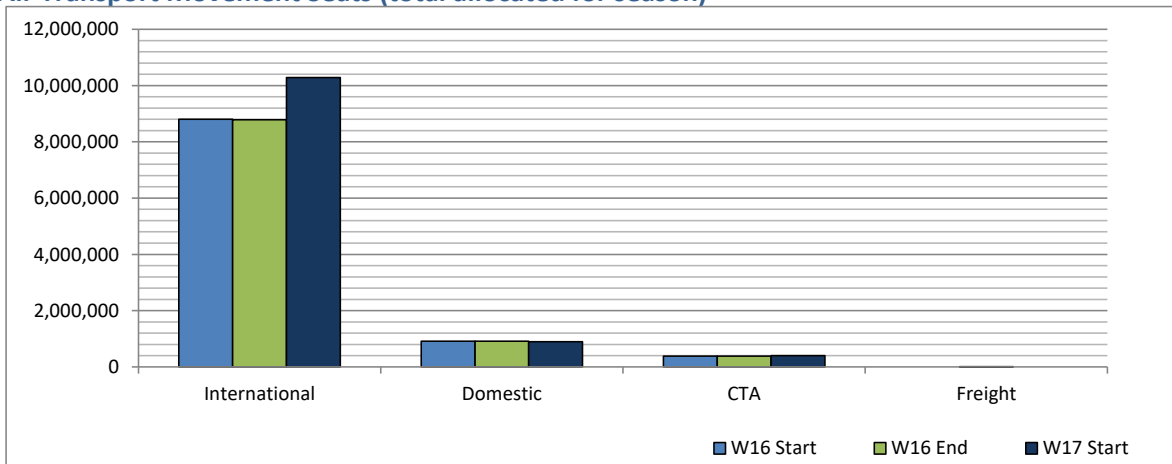
# Full Season - Terminal Analysis



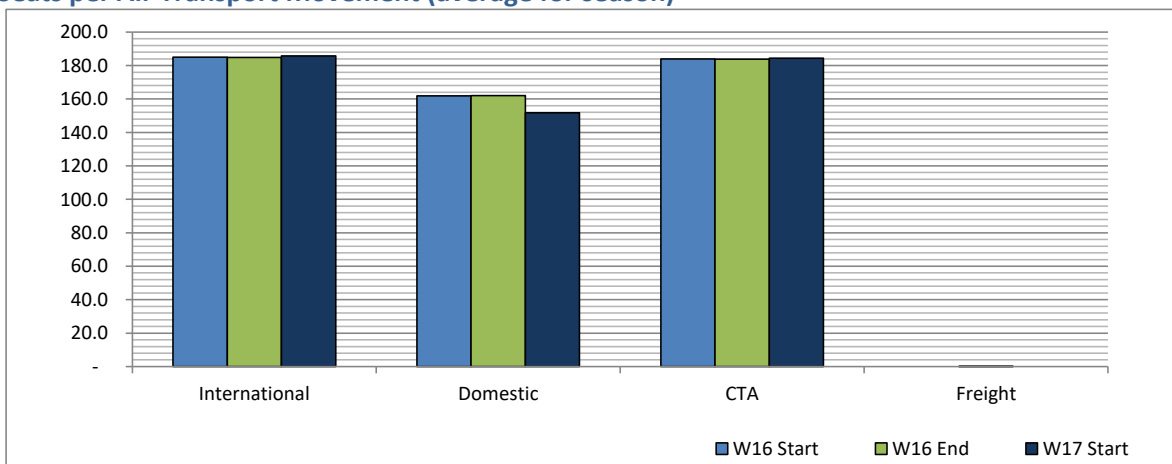
**Air Transport Movements (total allocated for season)**



**Air Transport Movement Seats (total allocated for season)**



**Seats per Air Transport Movement (average for season)**

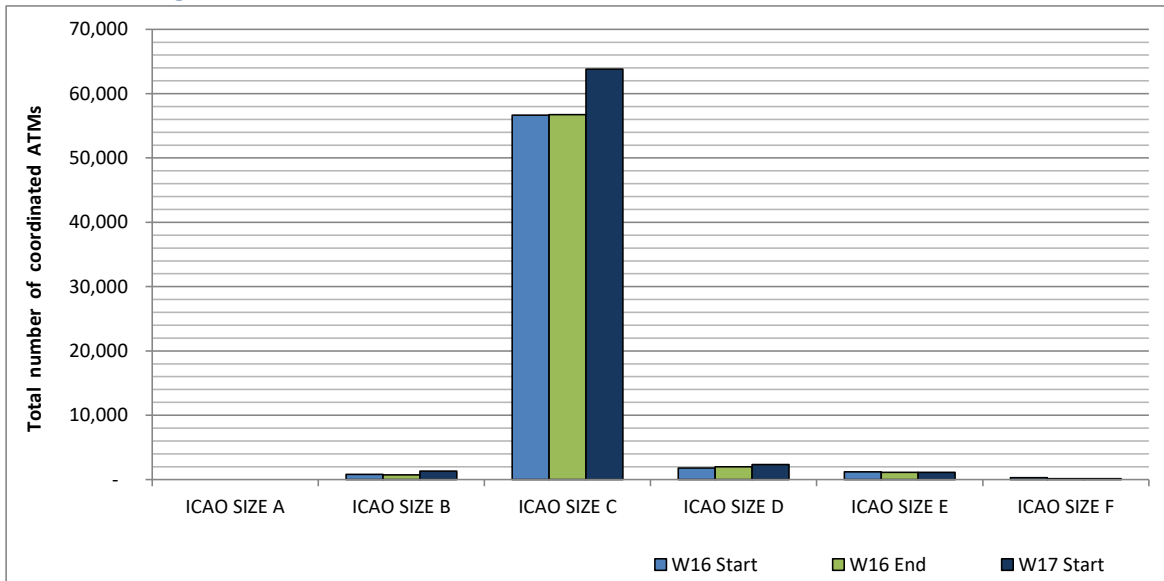




# Full Season - Aircraft Size Analysis

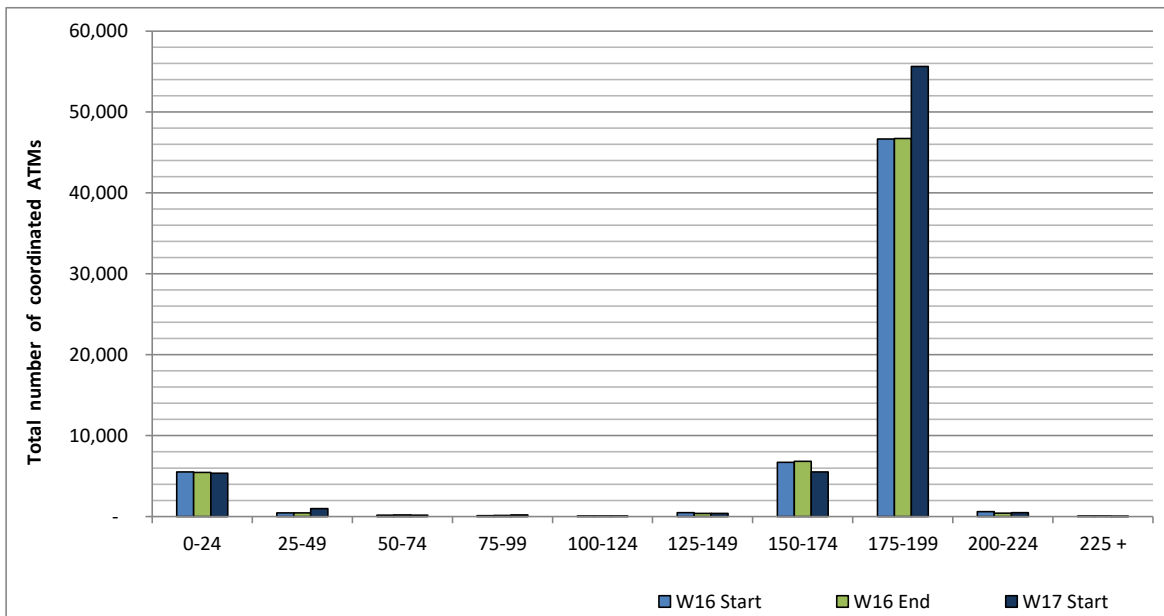


## ICAO size designation



Note: See Glossary for definitions of ICAO SIZE groupings

## Air Transport Movement seat distribution

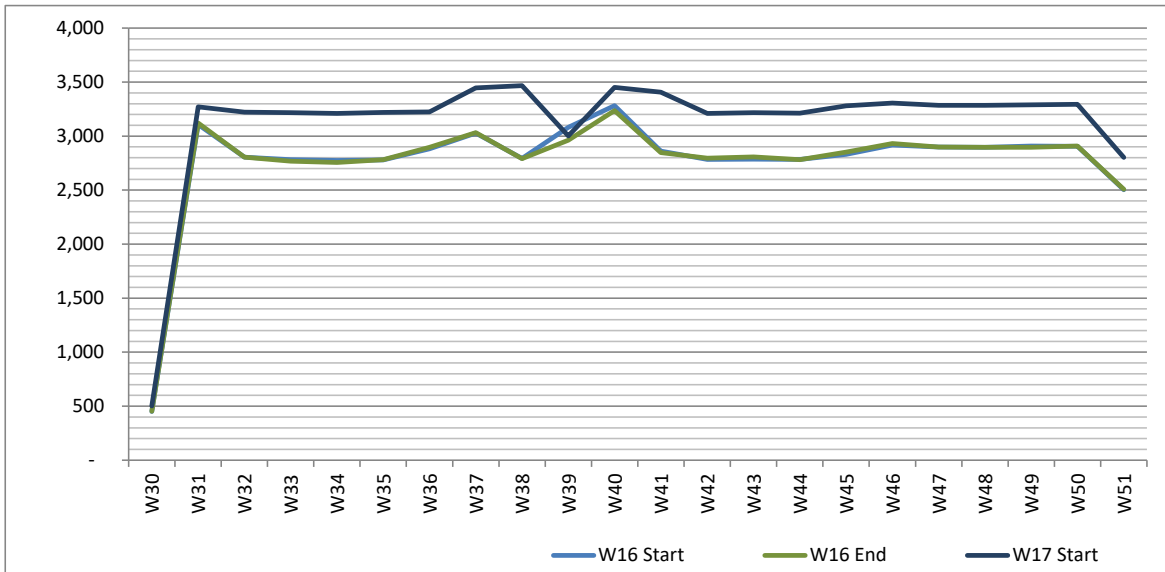


Note: FREIGHT-ONLY services with 0 seats are included in the first seat band '0-24'

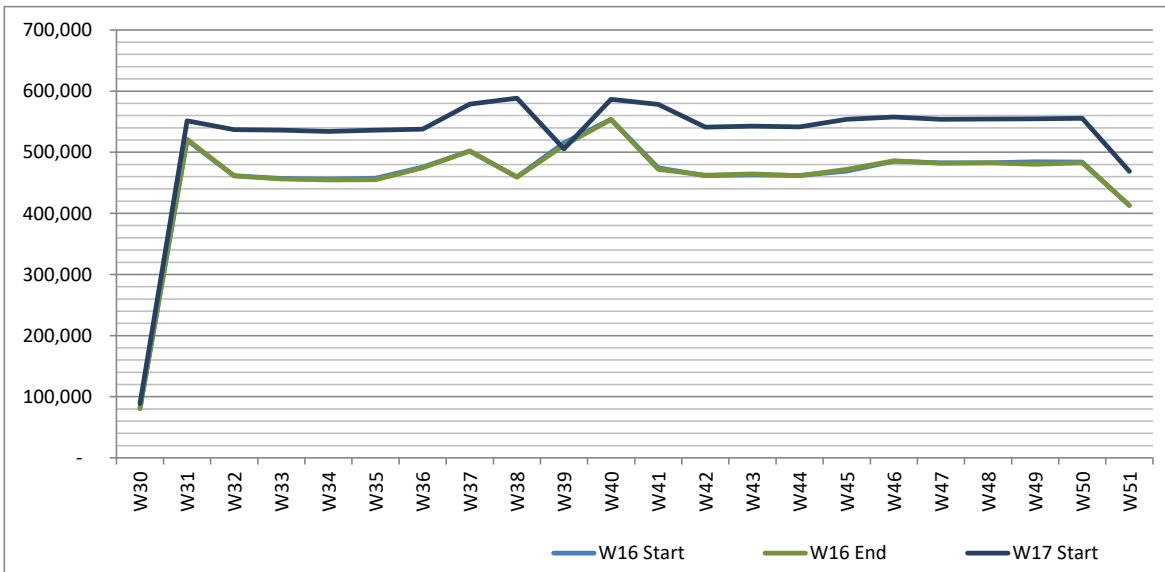
# Full Season - Seasonality



Air Transport Movements by week of season



Air Transport Movement Seats by week of season



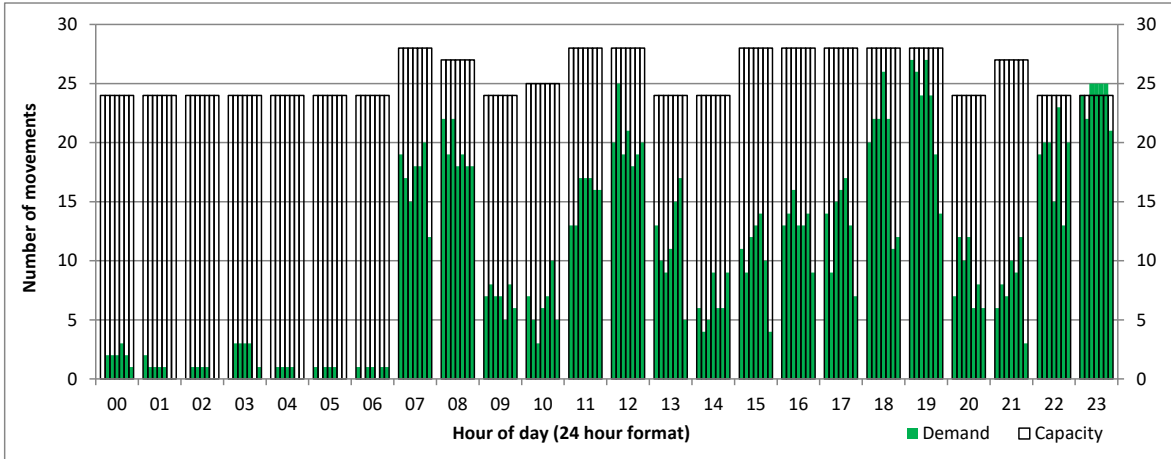
# Peak Week - Hourly Runway Demand

Schedule: W17 Start



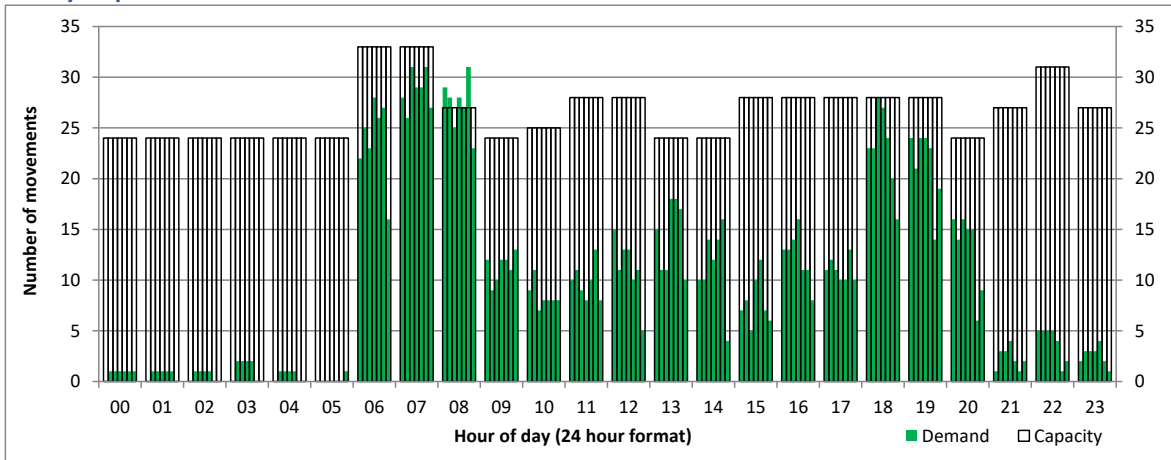
## Hourly Arrival Demand

Time: UTC



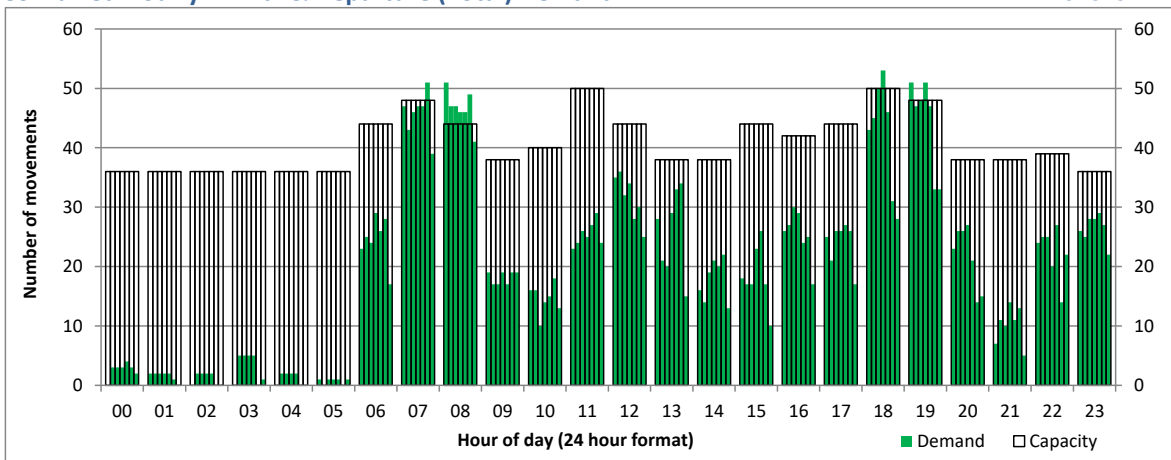
## Hourly Departure Demand

Time: UTC



## Combined Hourly Arrival & Departure (Total) Demand

Time: UTC



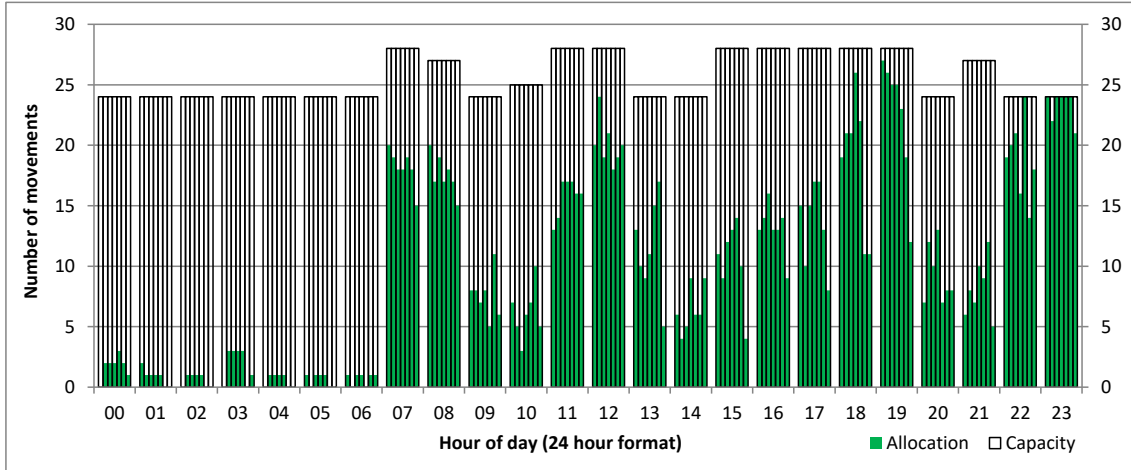
# Peak Week - Hourly Runway Allocation

Schedule: W17 Start



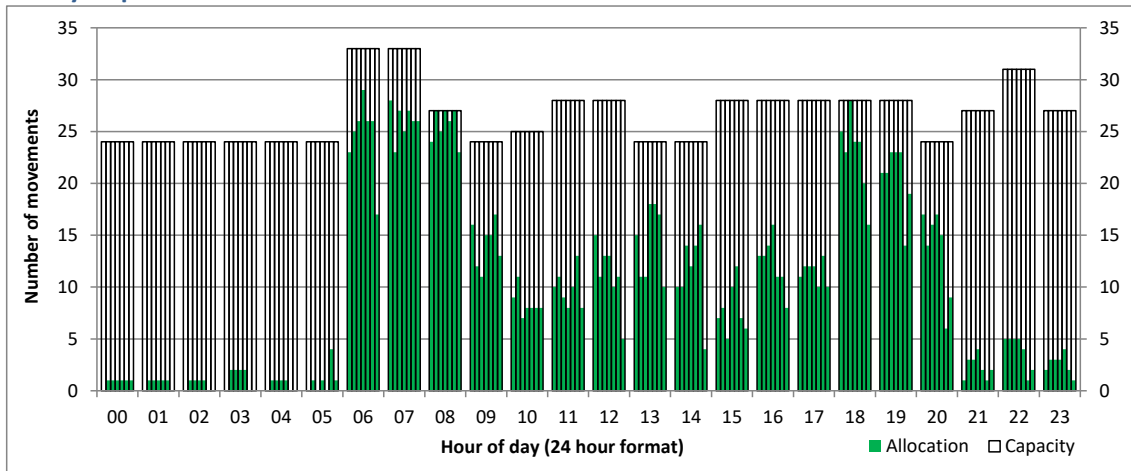
## Hourly Arrival Allocation

Time: UTC



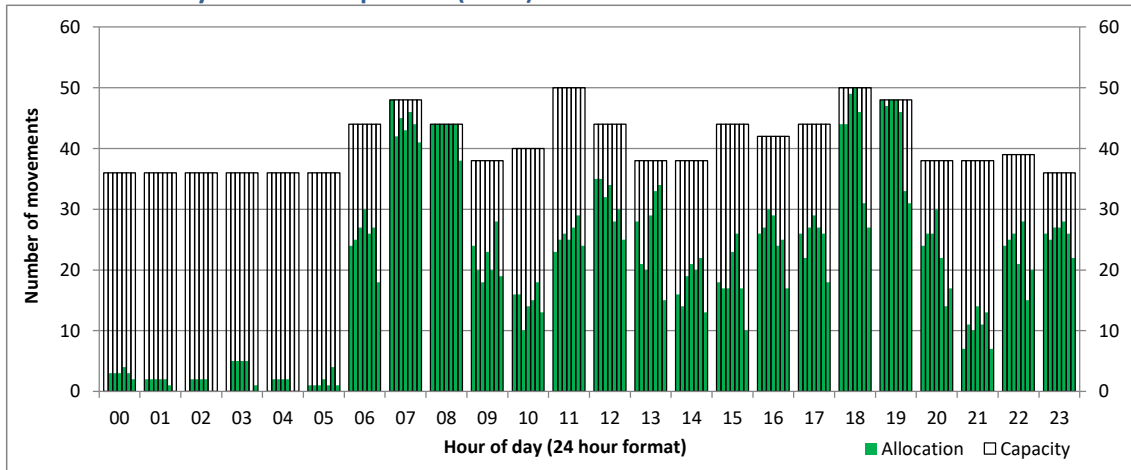
## Hourly Departure Allocation

Time: UTC



## Combined Hourly Arrival & Departure (Total) Allocation

Time: UTC



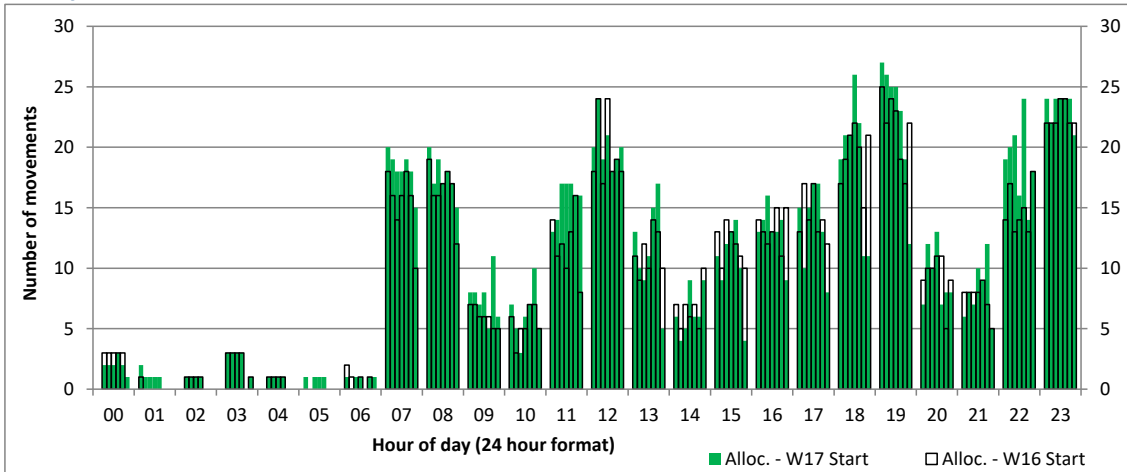
# Peak Week - Runway Allocation Comparison

Comparison of W17 Start vs. W16 Start



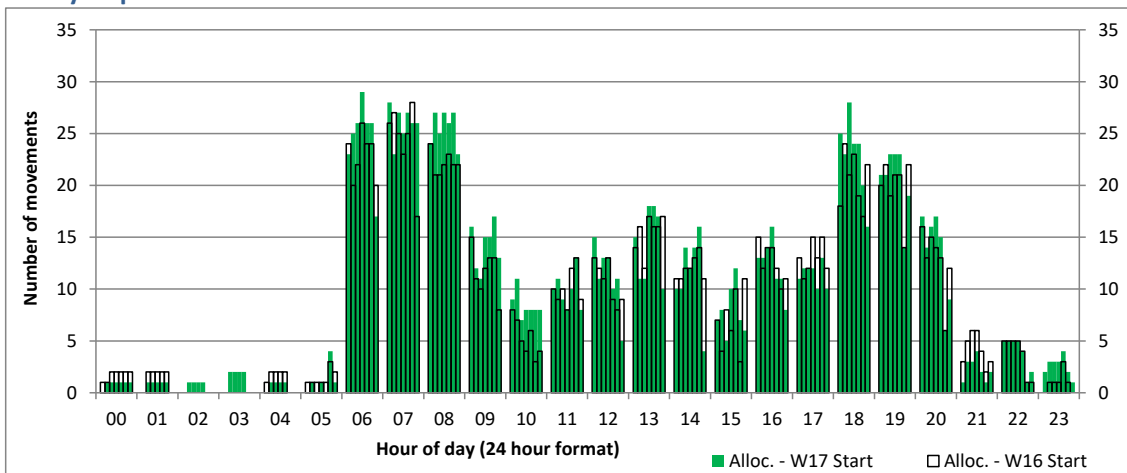
## Hourly Arrival Allocation

Time: UTC



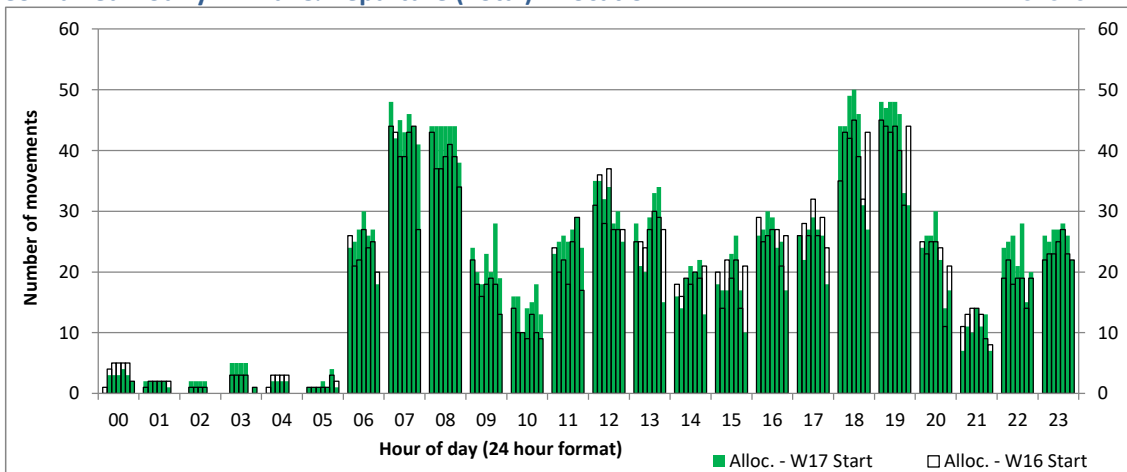
## Hourly Departure Allocation

Time: UTC



## Combined Hourly Arrival & Departure (Total) Allocation

Time: UTC



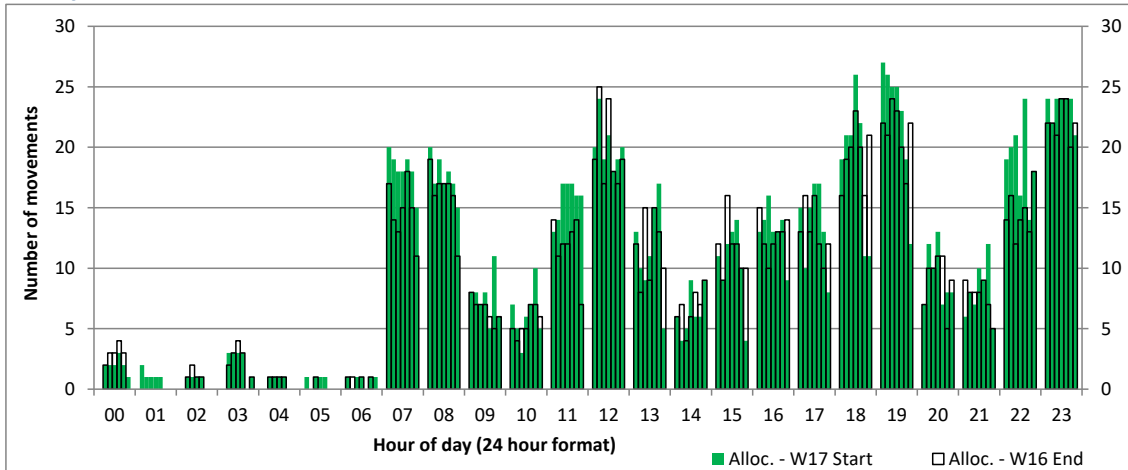
# Peak Week - Runway Allocation Comparison

Comparison of W17 Start vs. W16 End



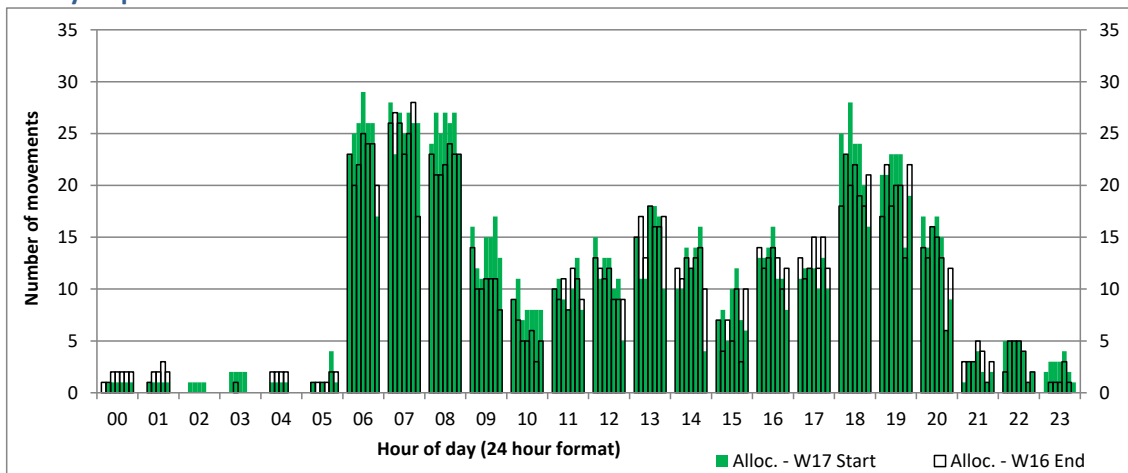
## Hourly Arrival Allocation

Time: UTC



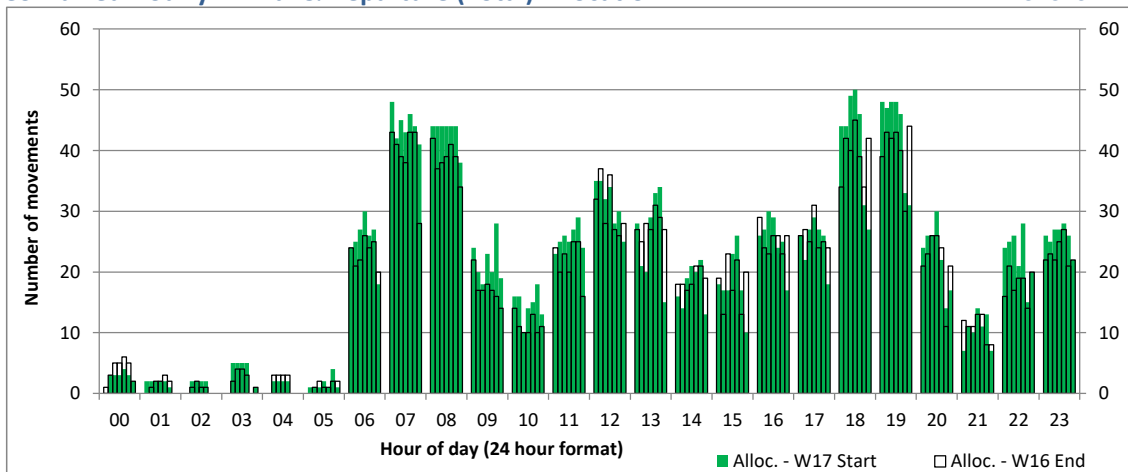
## Hourly Departure Allocation

Time: UTC



## Combined Hourly Arrival & Departure (Total) Allocation

Time: UTC



# Peak Week - Passengers Histogram

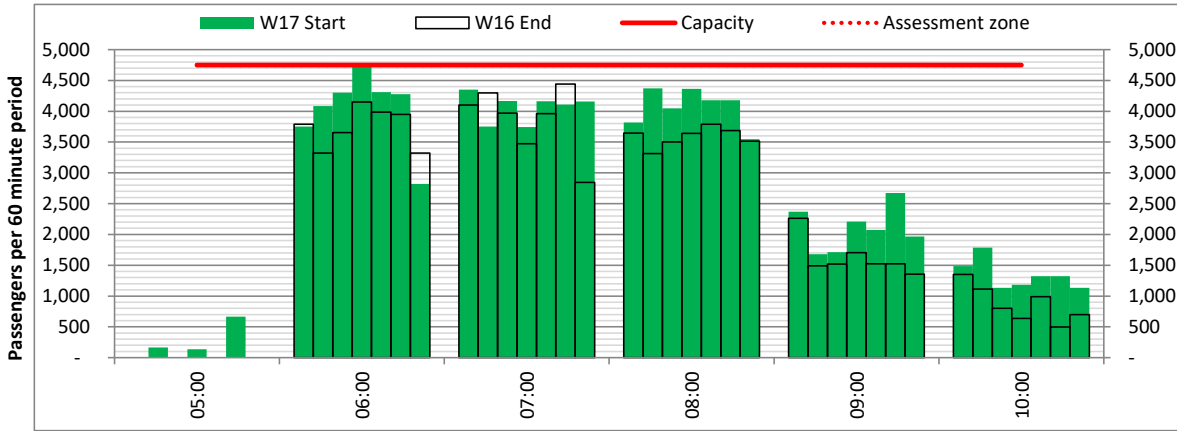
DEPARTURE - 60 minute count rolling every 60 mins (T60)



Terminals: All Terminals

Operators: All Operators

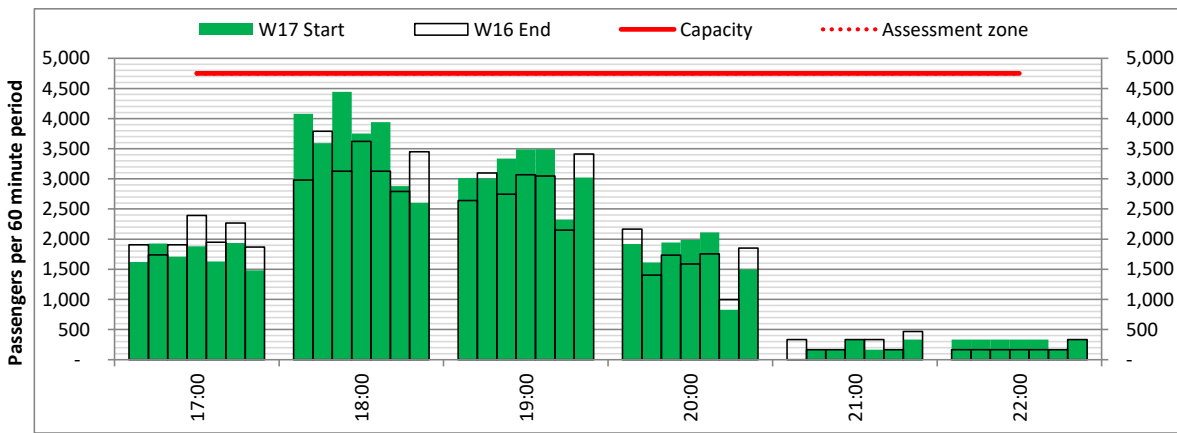
Days: 1234567



Start of count period - Time: UTC



Start of count period - Time: UTC



Start of count period - Time: UTC

# Peak Week - Passengers Histogram

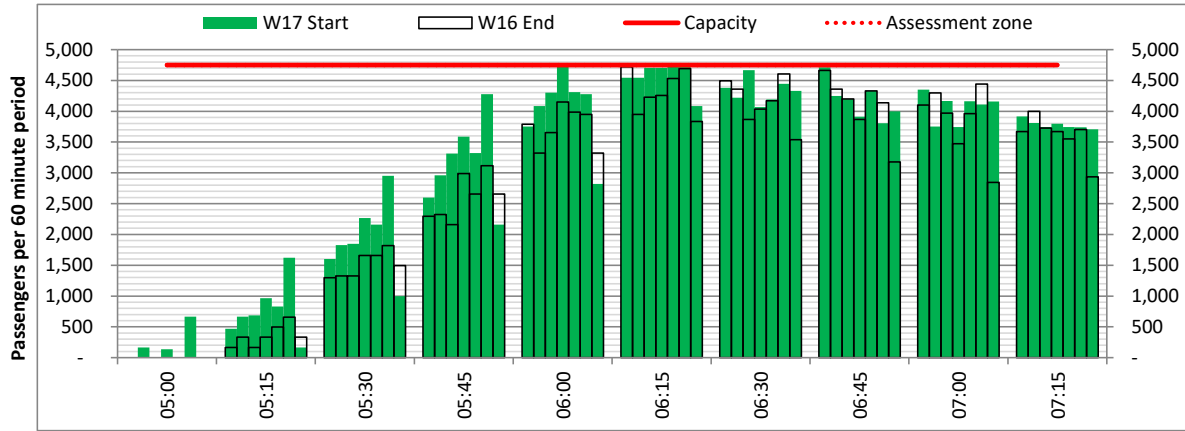
DEPARTURE - 60 minute count rolling every 15 mins (T60/15)



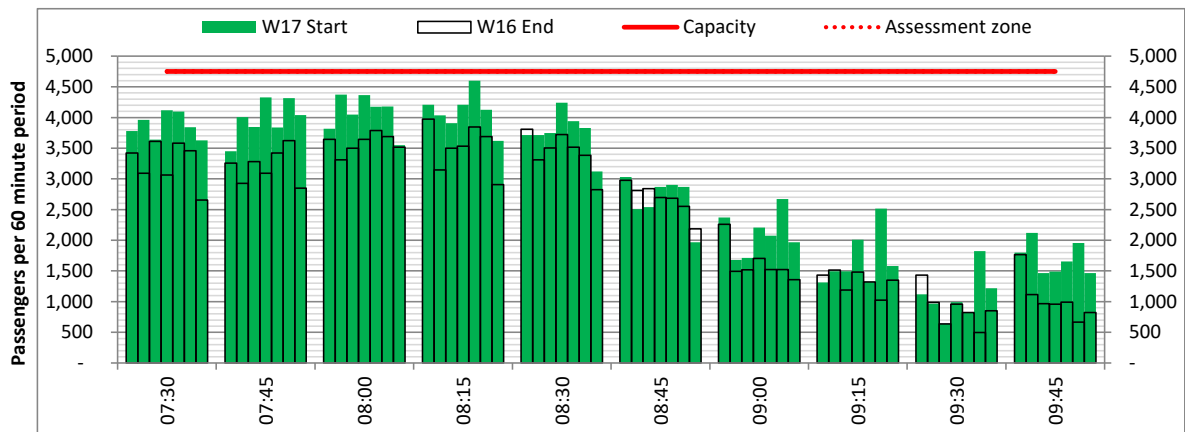
Terminals: All Terminals

Operators: All Operators

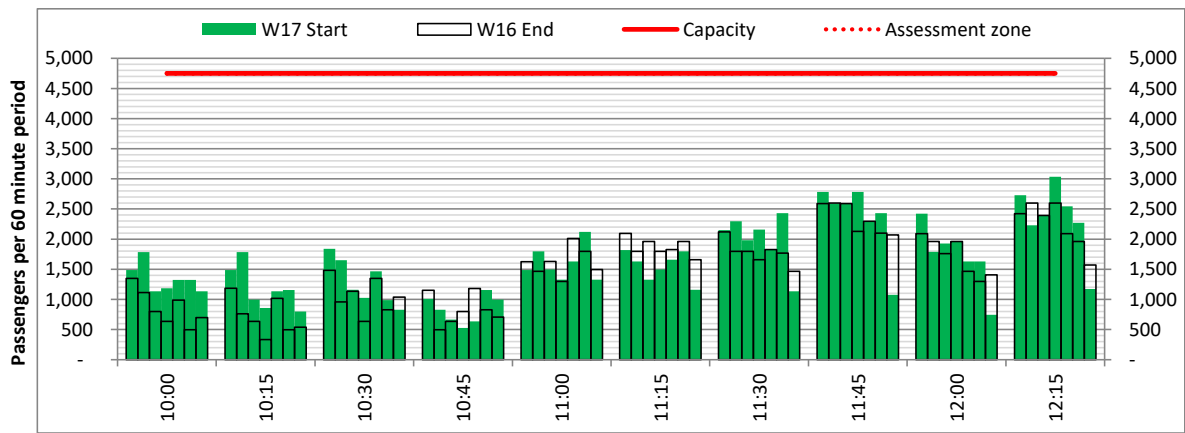
Days: 1234567



Start of count period - Time: UTC



Start of count period - Time: UTC



Start of count period - Time: UTC



# Peak Week - Passengers Histogram

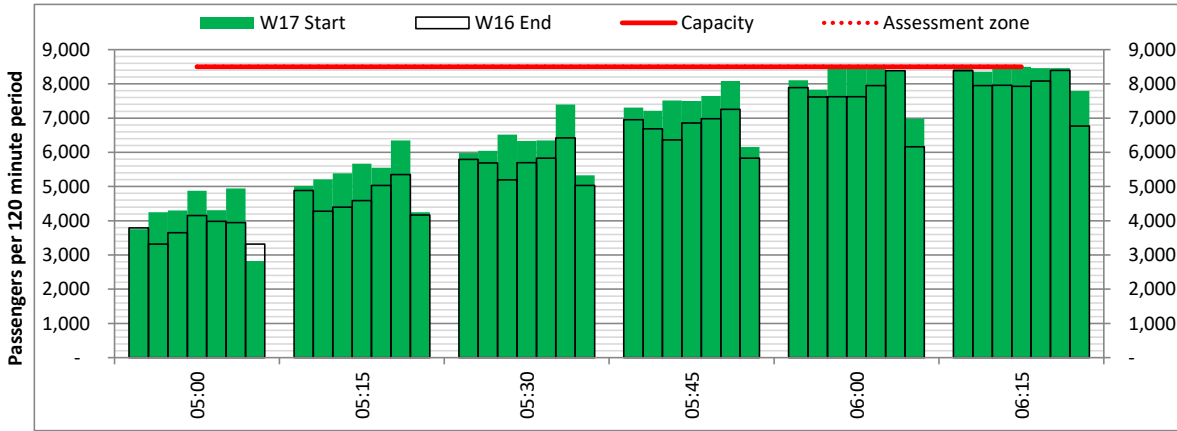
DEPARTURE - 120 minute count rolling every 15 mins (T120/15)



Terminals: All Terminals

Operators: All Operators

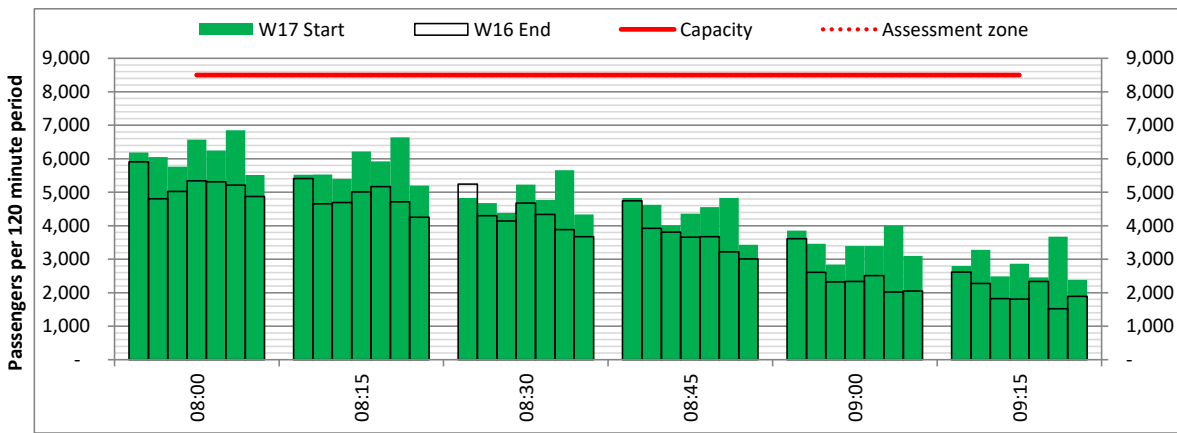
Days: 1234567



Start of count period - Time: UTC



Start of count period - Time: UTC



Start of count period - Time: UTC

# Peak Week - Passengers Histogram

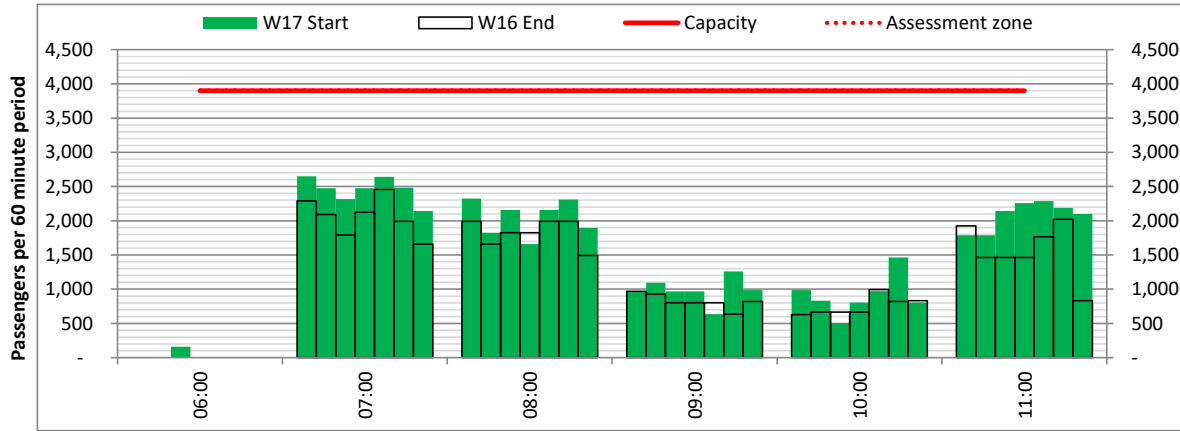
ARRIVAL - 60 minute count rolling every 60 mins (T60)



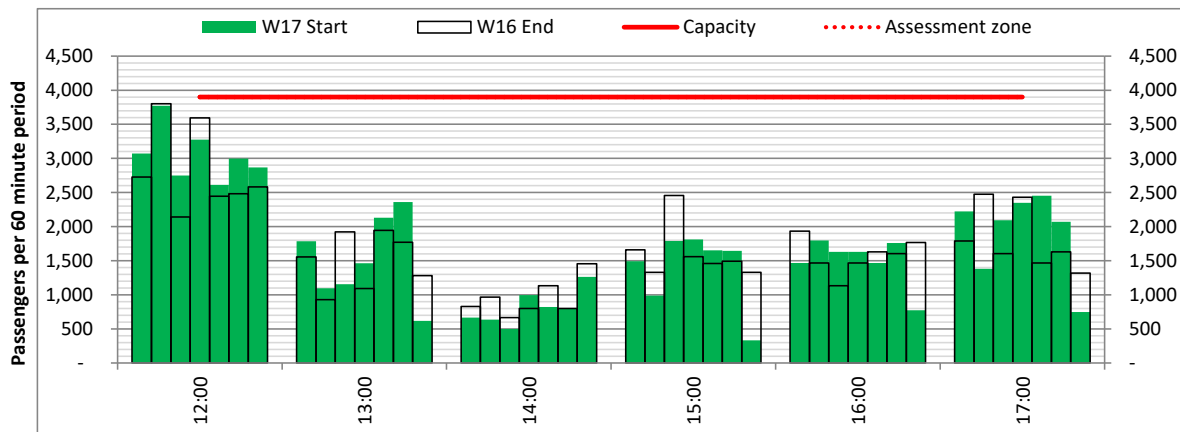
Terminals: 11

Operators: All Operators

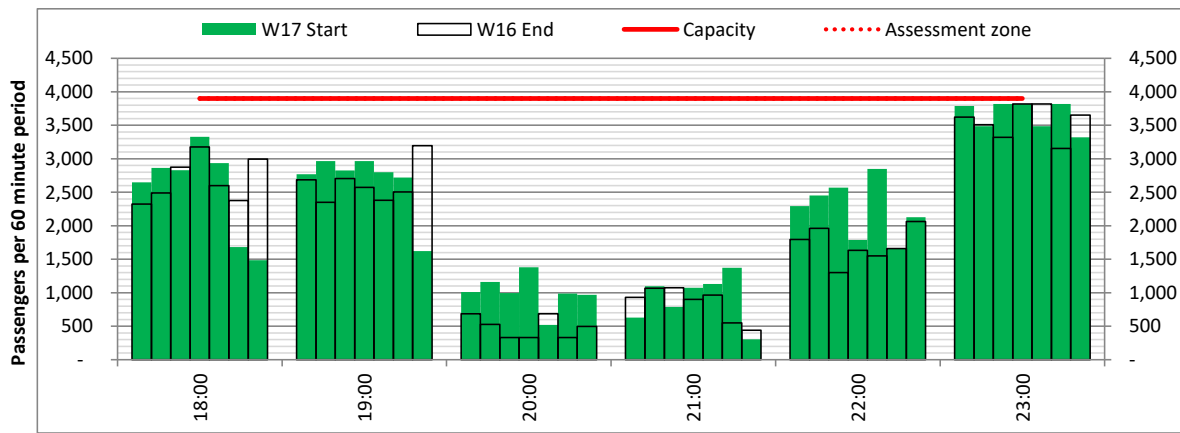
Days: 1234567



Start of count period - Time: UTC



Start of count period - Time: UTC



Start of count period - Time: UTC

# Peak Week - Passengers Histogram

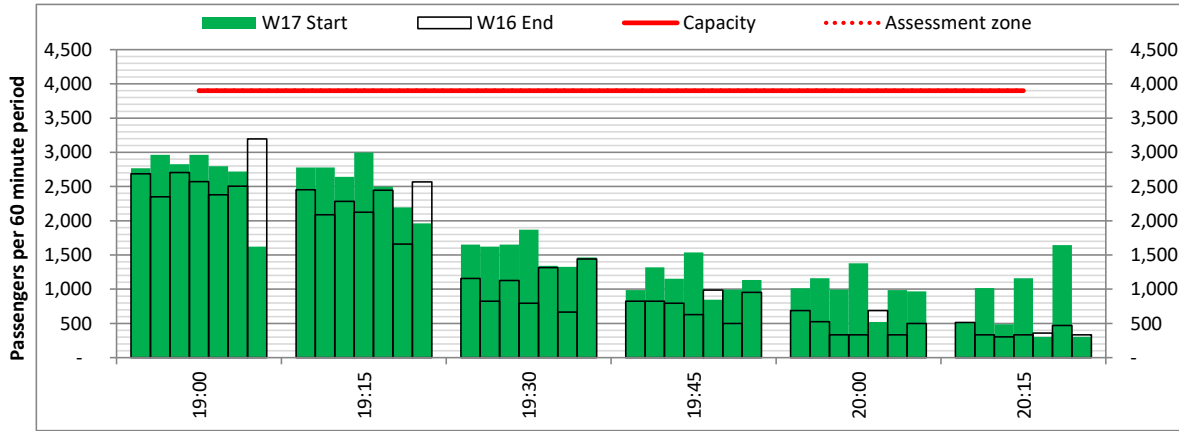
ARRIVAL - 60 minute count rolling every 15 mins (T60/15)



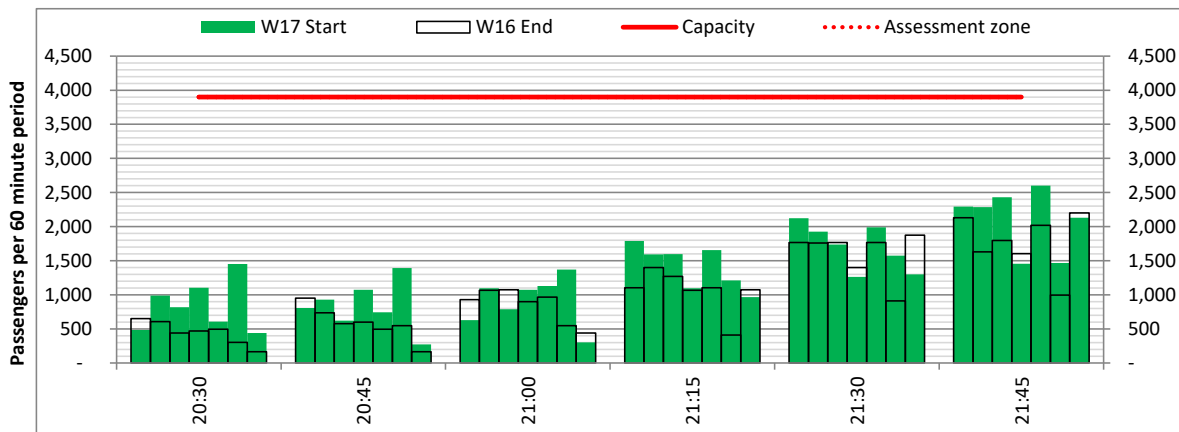
Terminals: 11

Operators: All Operators

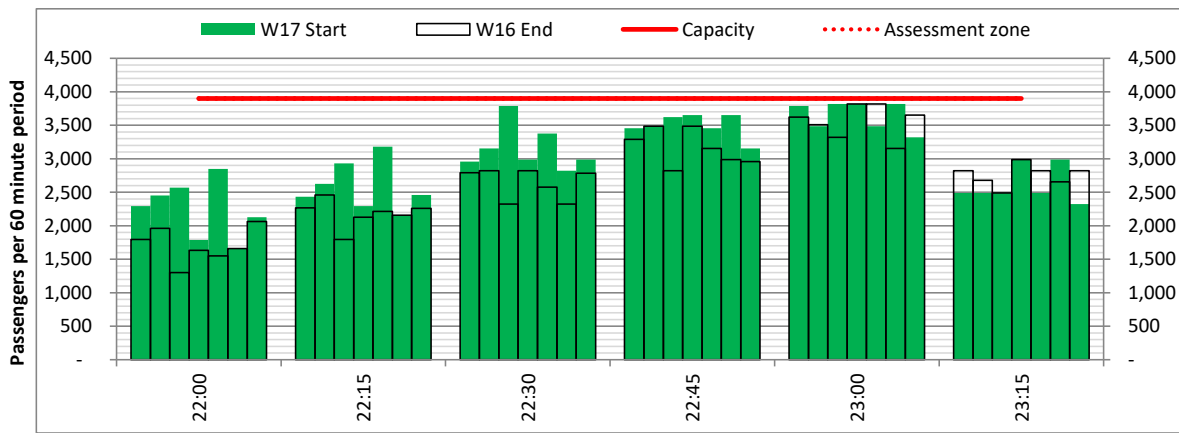
Days: 1234567



Start of count period - Time: UTC



Start of count period - Time: UTC



Start of count period - Time: UTC

# Peak Week - Passengers Histogram

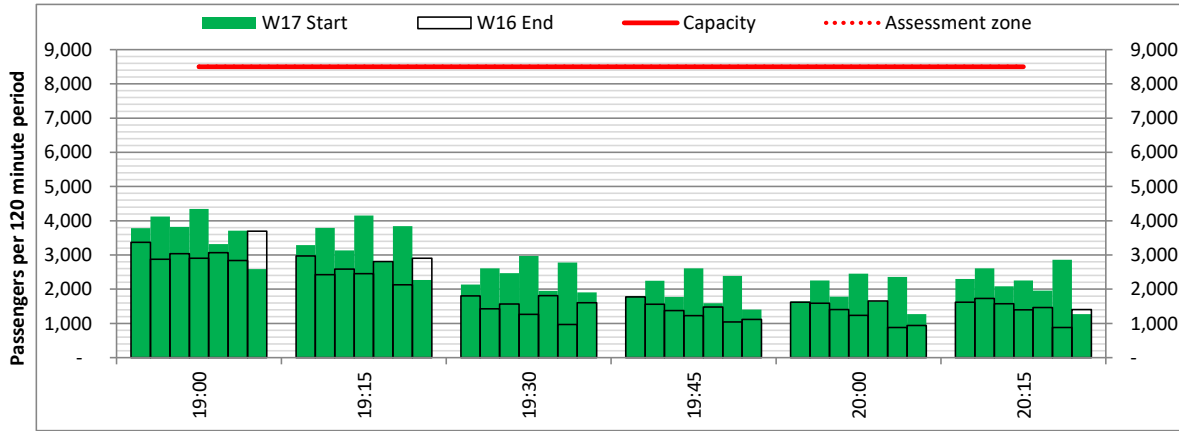
ARRIVAL - 120 minute count rolling every 15 mins (T120/15)



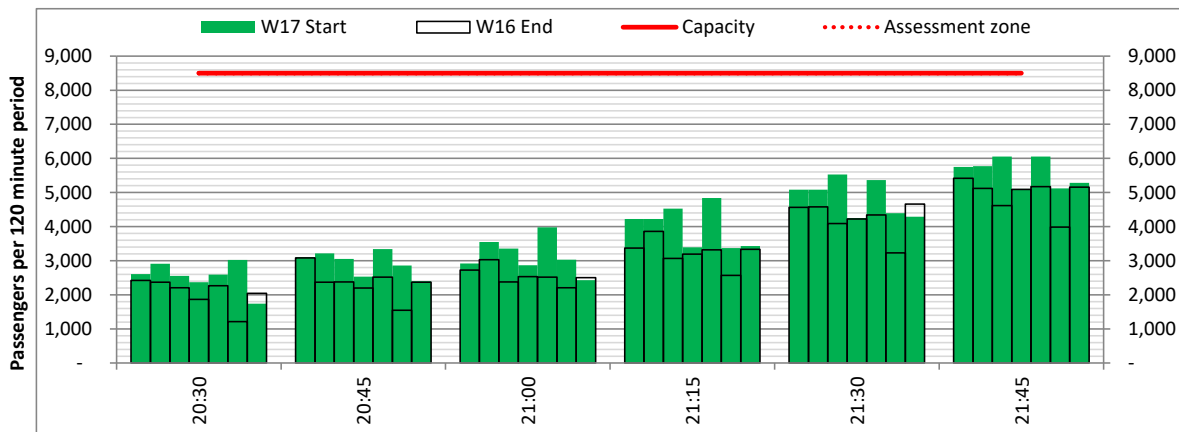
Terminals: 11

Operators: All Operators

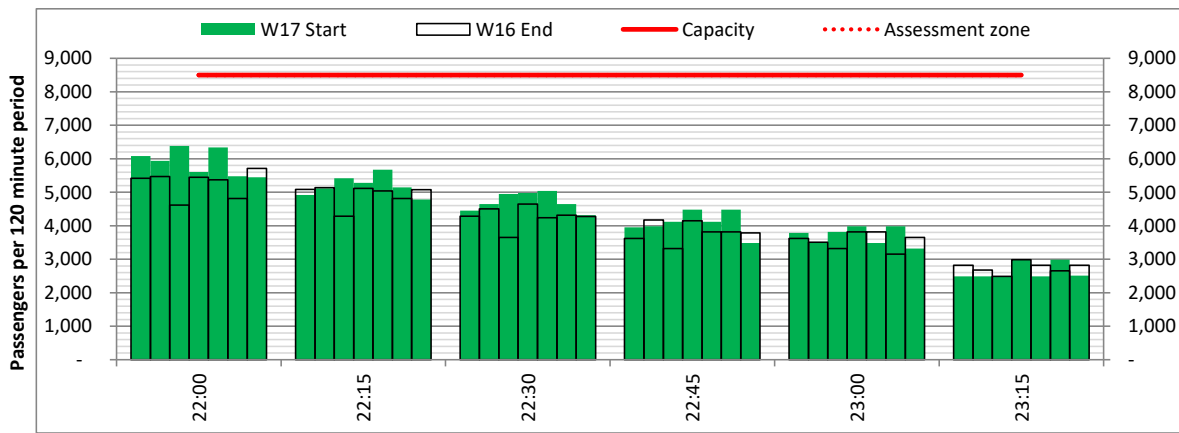
Days: 1234567



Start of count period - Time: UTC



Start of count period - Time: UTC



Start of count period - Time: UTC

<b>Air Transport Movement (ATM)</b>	Any aircraft movement which is either a scheduled or chartered passenger or cargo flight.
<b>Common Travel Area (CTA)</b>	Origin or Destination is in Republic of Ireland or the Channel Islands.
<b>Demand</b>	Unconstrained demand before any schedule adjustments have been made.
<b>"Fill-in"</b>	These are gaps in a historic series of slots which the carrier requests to "Fill-in" at Initial Submissions - Fill-ins will be recognisably part of the historic series and will have the same flight details to qualify as a "Fill-in".
<b>Hist (SHL)</b>	Snapshot of historic schedule rolled over from end of the previous equivalent season - as advised to airlines in the SHLs.
<b>ICAO Size A</b>	Aircraft with wingspan between 0.00m - 14.99m.
<b>ICAO Size B</b>	Aircraft with wingspan between 15.00m - 23.99m.
<b>ICAO Size C</b>	Aircraft with wingspan between 24.00m - 35.99m.
<b>ICAO Size D</b>	Aircraft with wingspan between 36.00m - 51.99m.
<b>ICAO Size E</b>	Aircraft with wingspan between 52.00m - 64.99m.
<b>ICAO Size F</b>	Aircraft with wingspan between 65.00m - 80.00m.
<b>Init Coord</b>	Snapshot of schedule immediately after Initial Coordination is completed - as advised to airlines in the SALs.
<b>Passenger Air Transport Movement (PATM)</b>	Any aircraft movement which is either a scheduled or chartered passenger flight.
<b>Start</b>	Snapshot of schedule shortly before the start of the scheduling season (exact date given below where used).
<b>Time: Local</b>	Times shown are in LOCAL time for the airport/scheduling season.
<b>Time: UTC</b>	Times shown are in Universal Time Constant (UTC).

---

### Data snapshot descriptions

<b>W16 Start</b>	W16 schedule as cleared on Wed 28-Sep-16.
<b>W16 End</b>	W16 schedule as cleared on Tue 05-Apr-16.
<b>W17 Start</b>	W17 schedule as cleared on Mon 25-Sep-17.
<b>Peak Week</b>	Peak week for W16 is Mon 02-Jan-17 to Sun 08-Jan-17. Peak week for W17 is Mon 18-Dec-17 to Sun 24-Dec-17.

---

### **For ACL use**

	Airport-Season-Branch-Resource	From date	To date	Time
Full Season Rep 1	STN-W16-SOS Report-Standard	Sun 30-Oct-2016	Sat 25-Mar-2017	UTC
Full Season Rep 2	STN-W16-Live-Standard	Sun 30-Oct-2016	Sat 25-Mar-2017	UTC
Full Season Rep 3	STN-W17-SOS Report-Standard	Sun 29-Oct-2017	Sat 24-Mar-2018	UTC
	Airport-Season-Branch-Resource	From date	To date	Time
Peak Week Rep 1	STN-W16-SOS Report-Standard	Mon 02-Jan-2017	Sun 08-Jan-2017	UTC
Peak Week Rep 2	STN-W16-Live-Standard	Mon 02-Jan-2017	Sun 08-Jan-2017	UTC
Peak Week Rep 3	STN-W17-SOS Report-Standard	Mon 18-Dec-2017	Sun 24-Dec-2017	UTC