



# WELLINGTON INTERNATIONAL AIRPORT

## WLG

### W17 Start of Season Report (International Traffic)

Key Statistics	W16 Operated	W 17 Season Start	Percentage Change
Air Transport Movements	2,742	2,574	▼ -6.1%
Total Seats	482,808	452,552	▼ -6.3%
Seats per Passenger ATM	176	176	

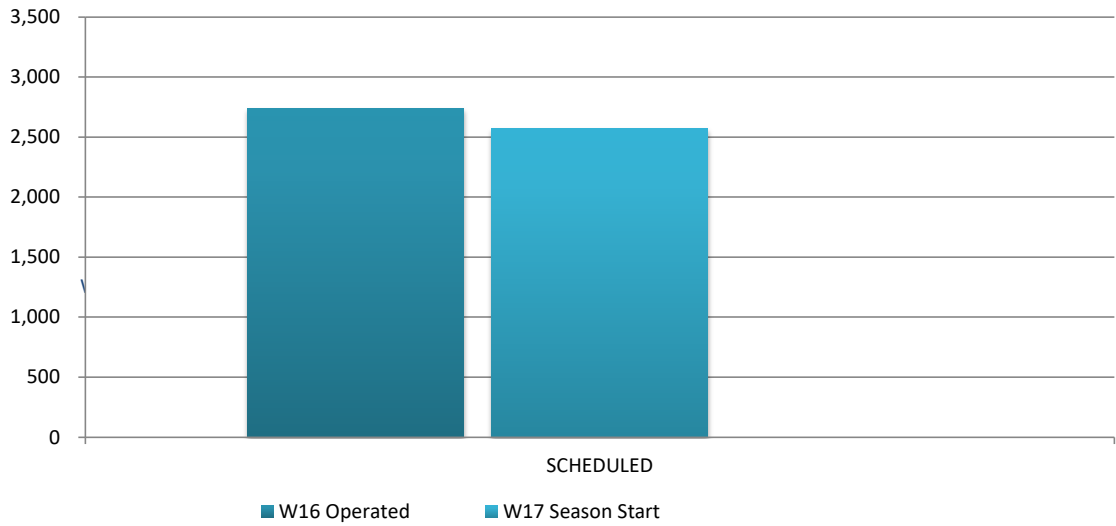
Contents	Page
Movements and Seats by Service Type	2
Peak Week Departure Frequencies by Carrier	3
Airlines by ATM's and Seats	4
Destinations by ATM's and Seats	5
Total Movements by Week	6
International Terminal - Passengers per 60 Minutes	7
Glossary	8

Data in this report is current as of 19 October 2017

No warranty whether expressed or implied as to the completeness, accuracy, fitness for purpose, or satisfactory quality is given by ACL regarding the information in this report, which is provided by third parties. Accordingly, ACL excludes all liability with regard to such data.

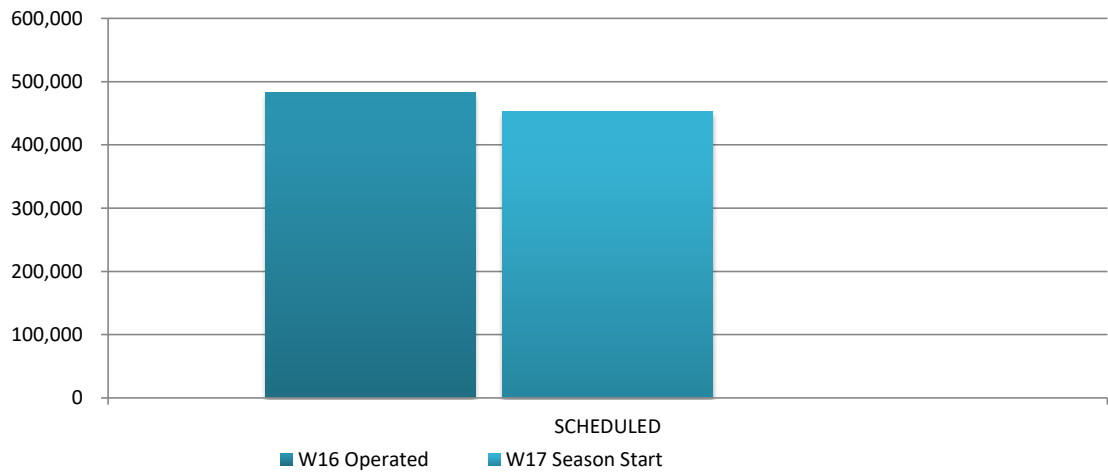
The contents of this report may not be reproduced without the written consent of ACL.

## Full Season ATMs by Service Type



	W16 Operated	W17 Season Start	% CHANGE
<b>SCHEDULED</b>	2,742	2,574	▼ -6.1%
<b>TOTAL</b>	2,742	2,574	▼ -6.1%

## Full Season Seats by Service Type



	W16 Operated	W17 Season Start	% CHANGE
<b>SCHEDULED</b>	482,808	452,552	▼ -6.3%
<b>TOTAL</b>	482,808	452,552	▼ -6.3%

## WELLINGTON INTERNATIONAL AIRPORT

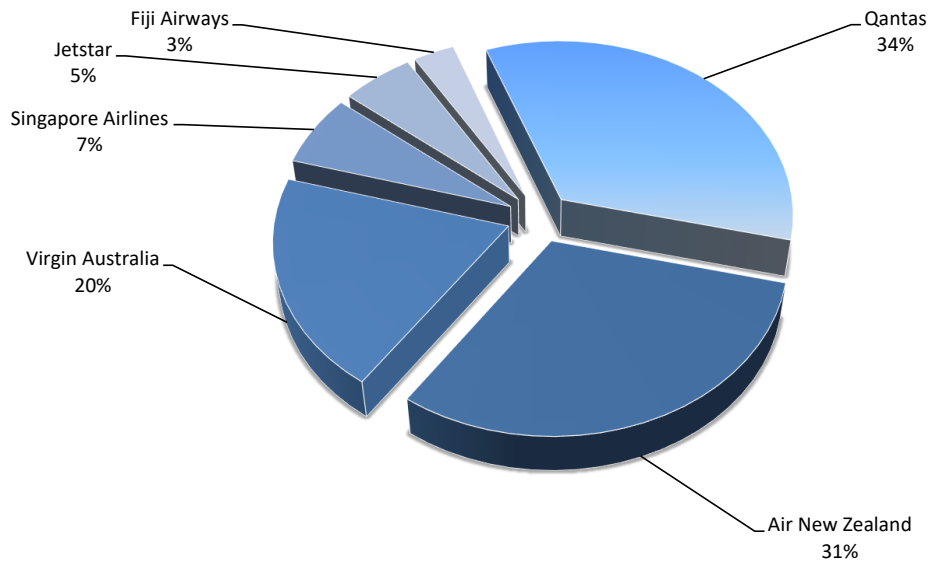
### PEAK WEEK DEPARTURE FREQUENCIES - BY CARRIER

W17 01 to 07 Jan 18

	OPERATOR	AIRPORT		W16		W17		SEATS +/-	ATMS +/-
				SEATS	ATMS	SEATS	ATMS		
FJ	Fiji Airways	NAN	Nadi International	284	2	284	2	0	0
FJ Total				284	2	284	2	0	0
JQ	Jetstar	MEL	Melbourne	1,260	7	0	0	-1,260	-7
		OOL	Gold Coast Coolangatta	720	4	720	4	0	0
JQ Total				1,980	11	720	4	-1,260	-7
NZ	Air New Zealand	MEL	Melbourne	1,176	7	1,176	7	0	0
		SYD	Sydney Kingsford Smith	2,016	12	2,016	12	0	0
NZ Total				3,192	19	3,192	19	0	0
QF	Qantas	MEL	Melbourne	1,344	8	1,176	7	-168	-1
		SYD	Sydney Kingsford Smith	2,520	15	2,352	14	-168	-1
QF Total				3,864	23	3,528	21	-336	-2
SQ	Singapore Airlines	SIN	Singapore Changi	1,064	4	1,064	4	0	0
SQ Total				1,064	4	1,064	4	0	0
VA	Virgin Australia	BNE	Brisbane International	2,464	14	2,464	14	0	0
VA Total				2,464	14	2,464	14	0	0

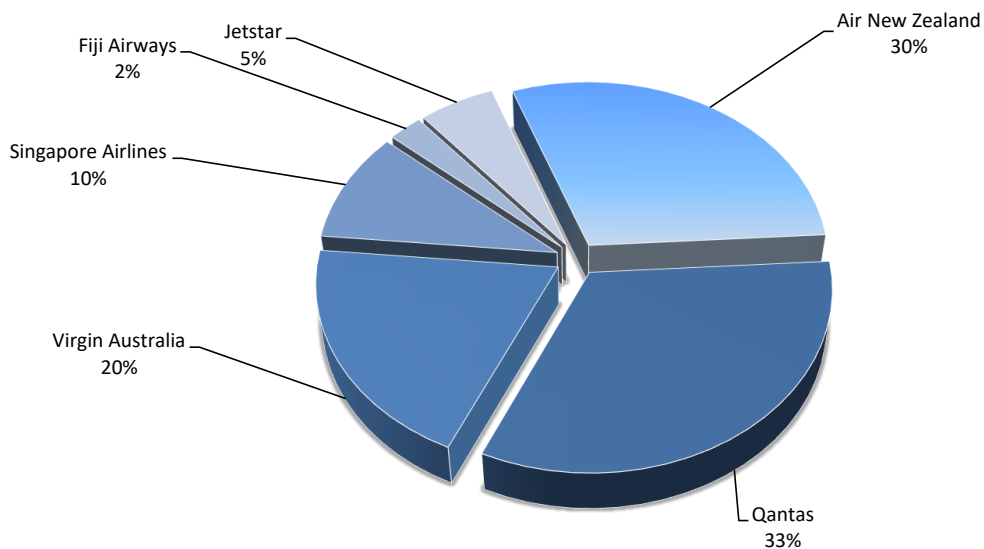
## Airlines by Air Transport Movements (ATMs)

Airline	NW17 Movements	NW16	Diff
Qantas	882	898	-2%
Air New Zealand	797	801	0%
Virgin Australia	507	512	-1%
Singapore Airlines	168	168	0%
Jetstar	140	295	-53%
Fiji Airways	80	68	18%

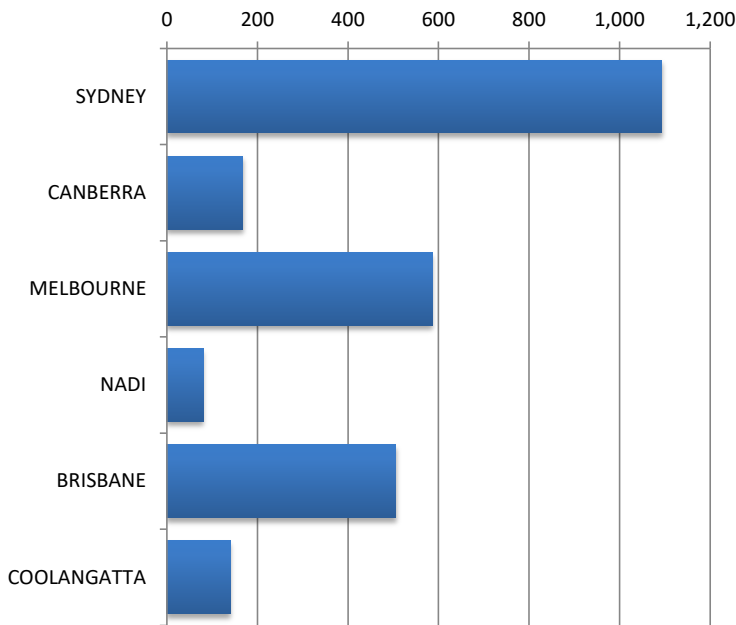


## Airlines by Air Seats

Airline	NW17 Seats	NW16	Diff
Air New Zealand	133,896	134,568	0%
Qantas	148,176	150,864	-2%
Virgin Australia	89,232	90,112	-1%
Singapore Airlines	44,688	44,688	0%
Fiji Airways	11,360	9,656	18%
Jetstar	25,200	52,920	-52%

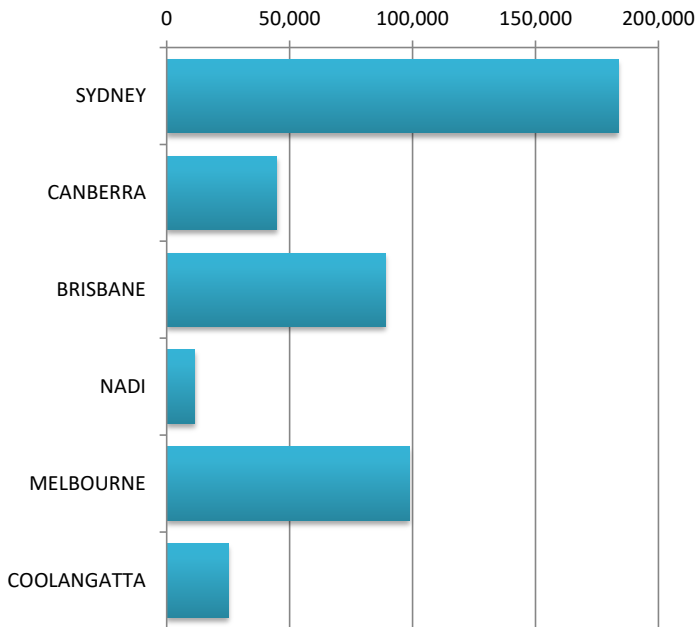


## Air Transport Movements by Destination



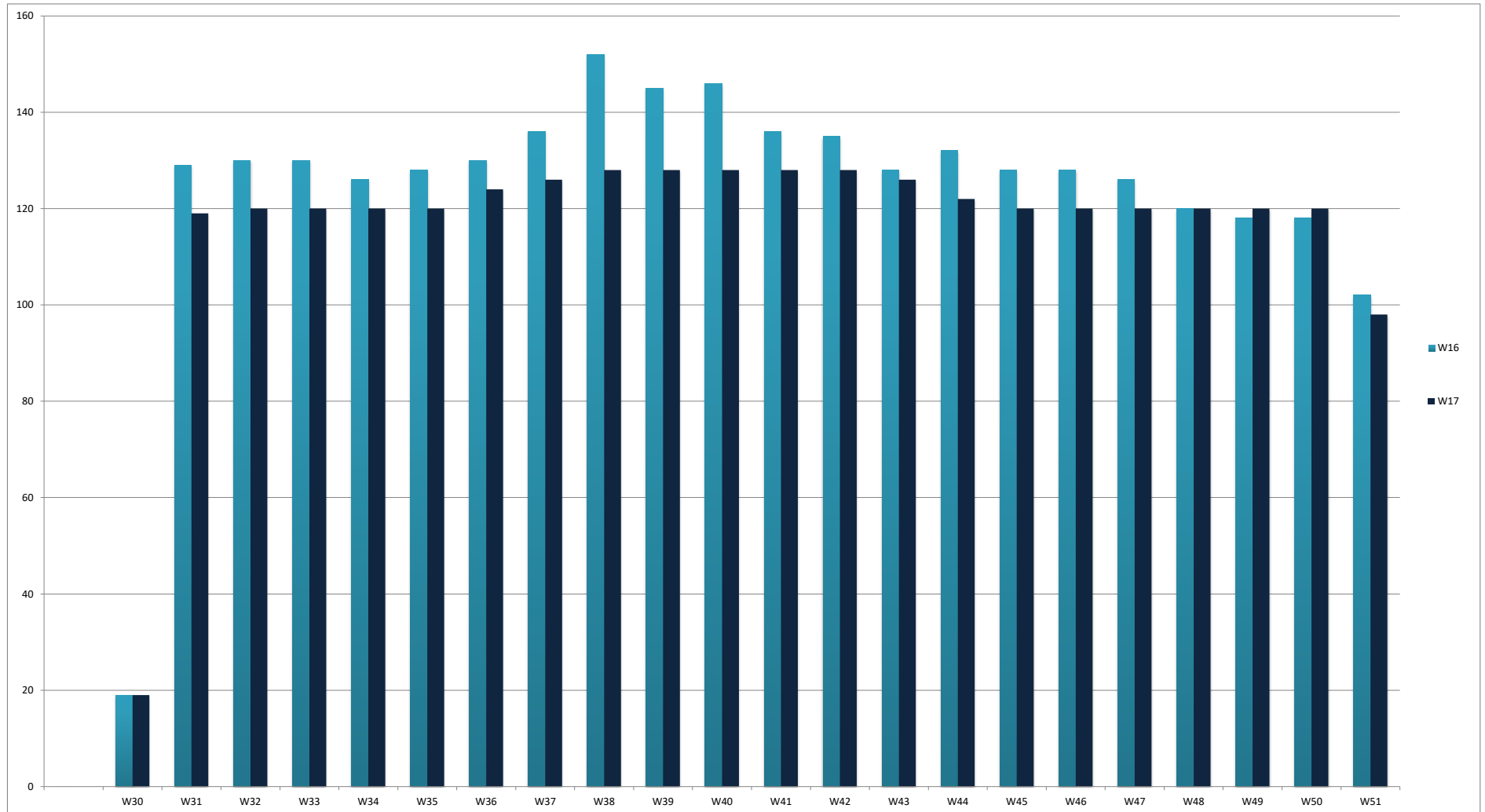
Destination	NW17 ATM'S	NW16	Diff
SYDNEY	1,093	1,104	0
CANBERRA	168	168	0%
MELBOURNE	587	752	-22%
NADI	80	68	18%
BRISBANE	506	512	-1%
COOLANGATTA	140	138	1%

## Air Transport Seats by Destination



Destination	NW17 SEATS	NW16	Diff
SYDNEY	183,632	185,472	-1%
CANBERRA	44,688	44,688	
BRISBANE	89,056	90,112	-1%
NADI	11,360	9,656	18%
MELBOURNE	98,616	128,040	-23%
COOLANGATTA	25,200	24,840	1%

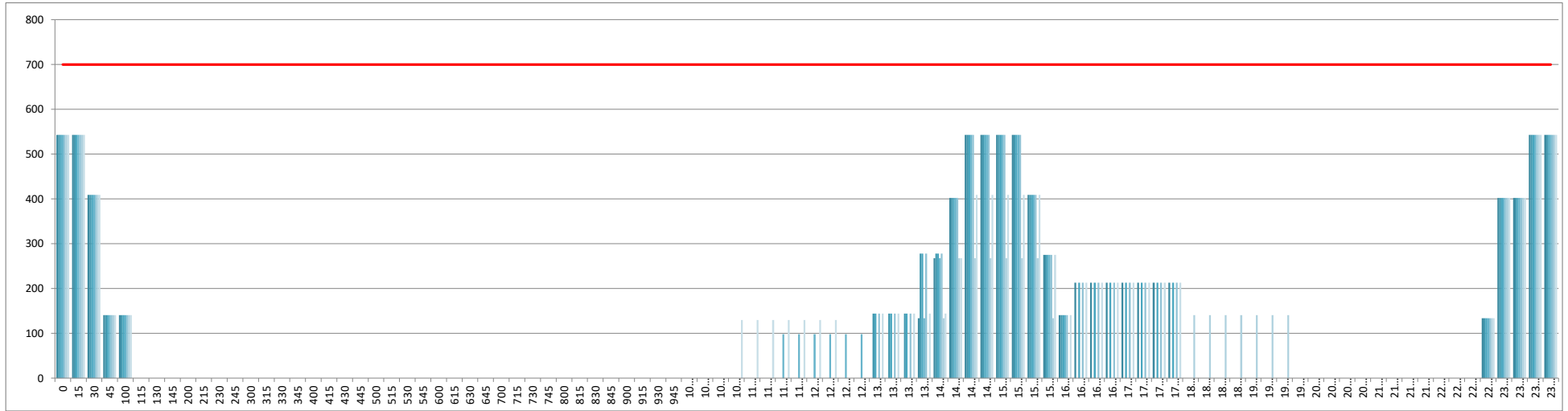
## Air Transport Movements by Week for W16 vs W17 Season



## INTERNATIONAL TERMINAL ARRIVALS (PER 60 MINUTES)

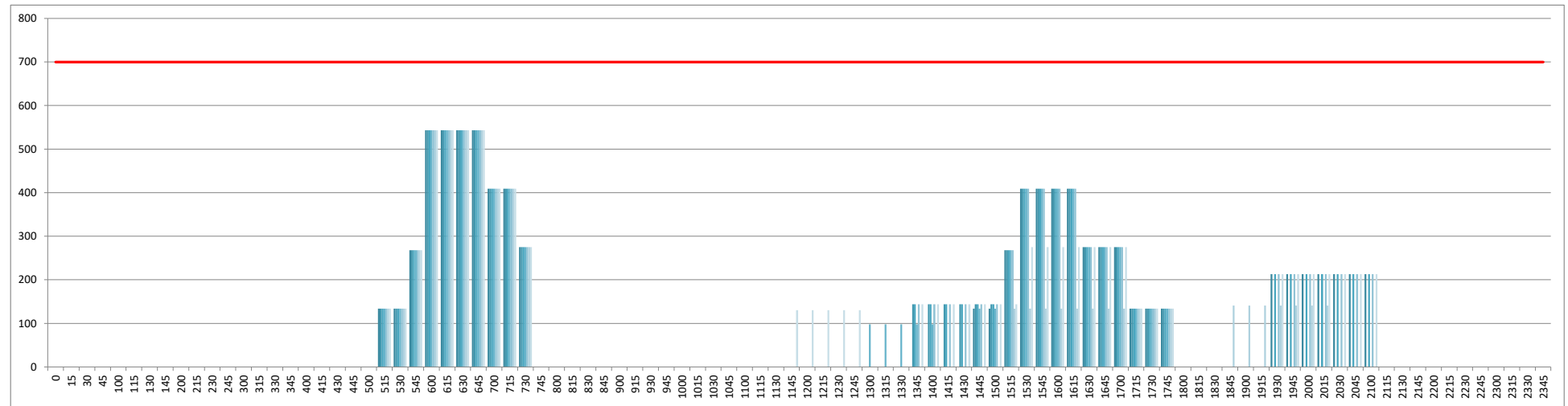
Week Movements per Hour - All times LOCAL

Demand Post IATA meeting



## INTERNATIONAL TERMINAL DEPARTURES (PER 60 MINUTES)

Week Movements per Hour - All times LOCAL



## GLOSSARY OF TERMS

---

<b>Air Transport Movement (ATM)</b>	A scheduled or charter passenger or freight aircraft movement.
<b>Allocation</b>	The allocation of slots such that demand is constrained to fit within declared scheduling limits.
<b>Passenger ATM</b>	A scheduled or charter <u>passenger</u> aircraft movement (ie, excluding all-cargo aircraft movements).
<b>Scheduling Limits</b>	Limiting parameters declared by the Airport Operator used in the coordination process.
<b>Seats</b>	The number of seats based on the aircraft configuration advised by the airline.
<b>Peak Week</b>	01 to 07 Jan 2018
<b>Data Snapshot</b>	All data used for this report was as held 19 October 2017

### GUIDE TO HISTOGRAMS

---

The histograms show the pattern of traffic by time of day against the appropriate scheduling limit. Each time period consist of seven columns representing the days-of-week, Monday through Sunday.