

QUEENSTOWN INTERNATIONAL AIRPORT

ZQN

W17 Start of Season Report

Key Statistics	W16 Operated	W17 Season Start	Percentage Change	
Air Transport Movements	6,267	6,815	▲	9%
Total Seats	1,021,568	1,110,460	▲	9%
Seats per Passenger ATM	163	163		

All data used for this report was as held 19 October 2017

Contents	Page
Airline Rank by ATM's and Seats	2
Aircraft Type Rankings by ATM's and Seats	3
Peak Week Departure Frequencies by Carrier	4
Destination Rankings by ATM's and Seats	5
Runway Peak Week Utilisation	6
Domestic Terminal Peak Week Utilisation	7
International Terminal Peak Week Utilisation	8
Total Terminal Peak Week Utilisation	9
Glossary	10

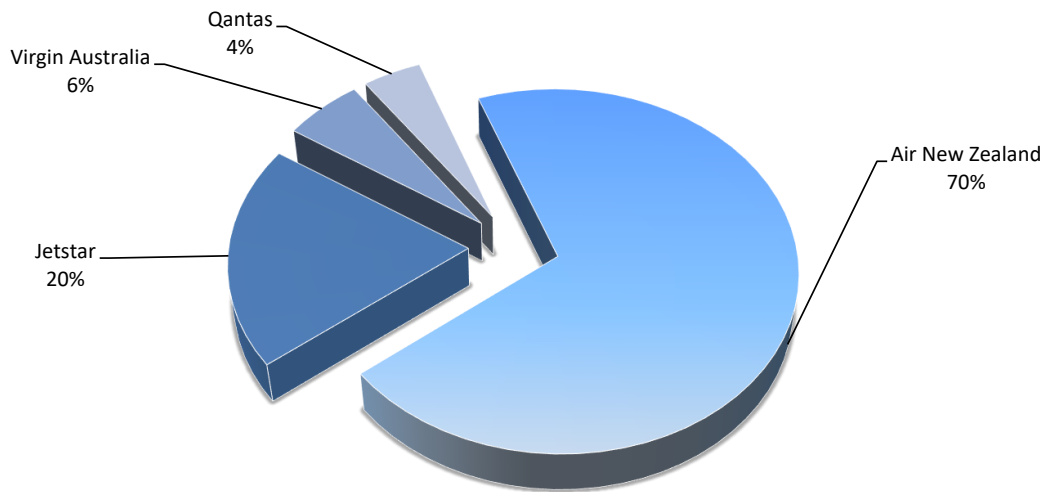
Data in this report is current as of 19 October 2017

No warranty whether expressed or implied as to the completeness, accuracy, fitness for purpose, or satisfactory quality is given by ACL regarding the information in this report, which is provided by third parties. Accordingly, ACL excludes all liability with regard to such data.

The contents of this report may not be reproduced without the written consent of ACL.

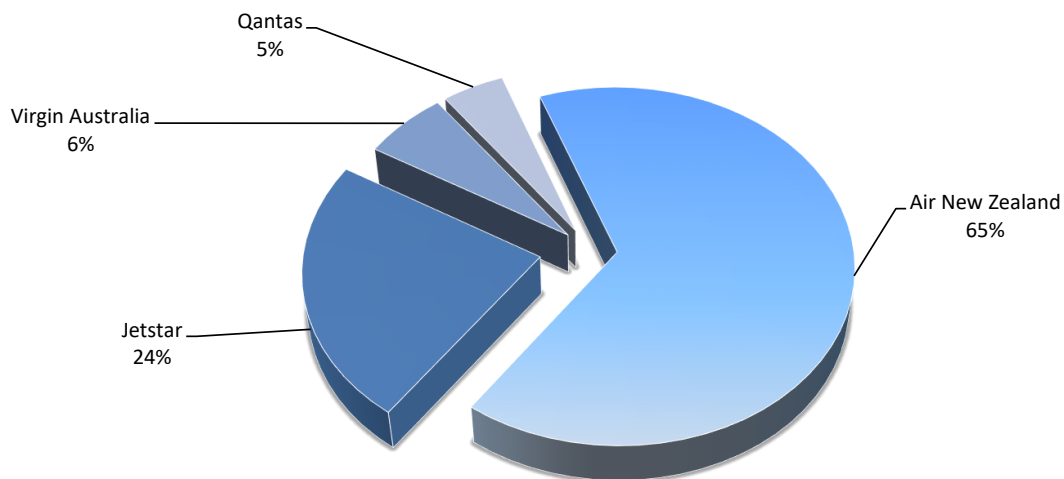
Airlines by Air Transport Movements (ATMs)

Airline	Movements
Air New Zealand	4,771
Jetstar	1,352
Virgin Australia	398
Qantas	294



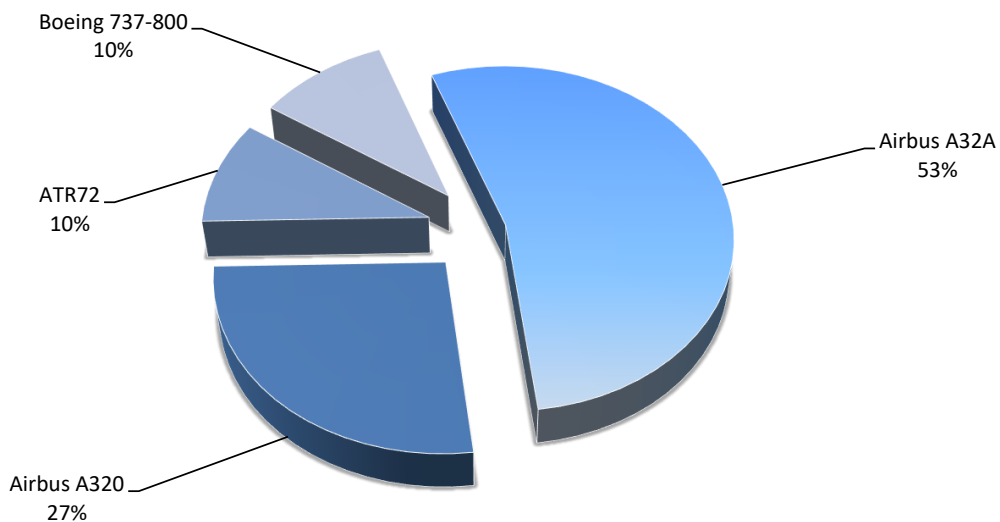
Airlines by Seats

Airline	Seats
Air New Zealand	725,937
Jetstar	261,360
Virgin Australia	70,048
Qantas	51,156



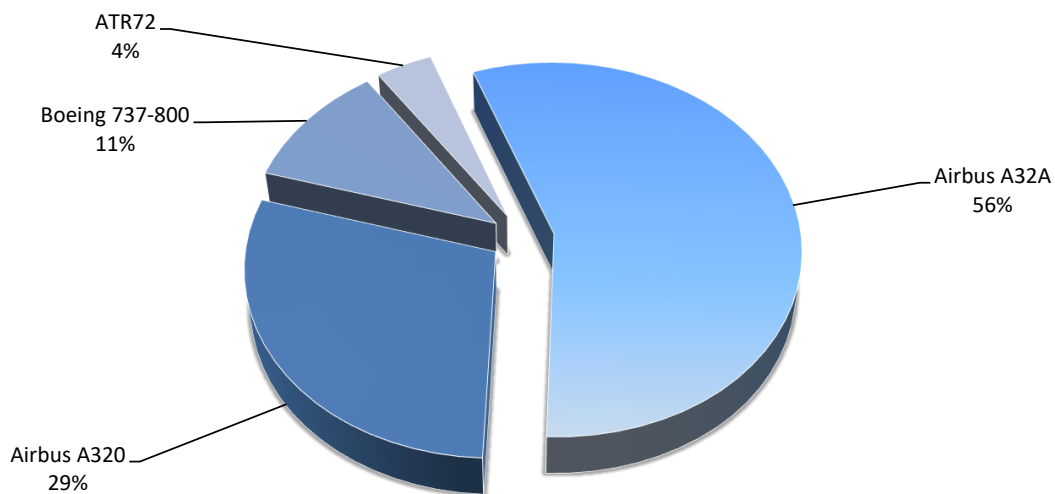
Aircraft Types by Air Transport Movements (ATMs)

Airline	Movements
Airbus A32A	3,651
Airbus A320	1,814
ATR72	658
Boeing 737-800	692



Aircraft Types by Seats

Airline	Seats
Airbus A32A	623,808
Airbus A320	320,976
Boeing 737-800	121,204
ATR72	44,472



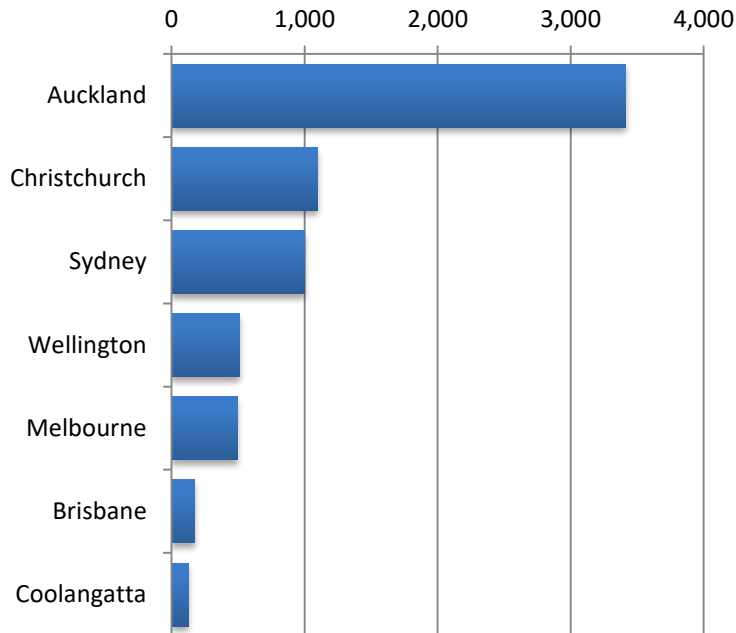
QUEENSTOWN AIRPORT

PEAK WEEK DEPARTURE FREQUENCIES - BY CARRIER

W17 week 01 to 07 Jan 2018

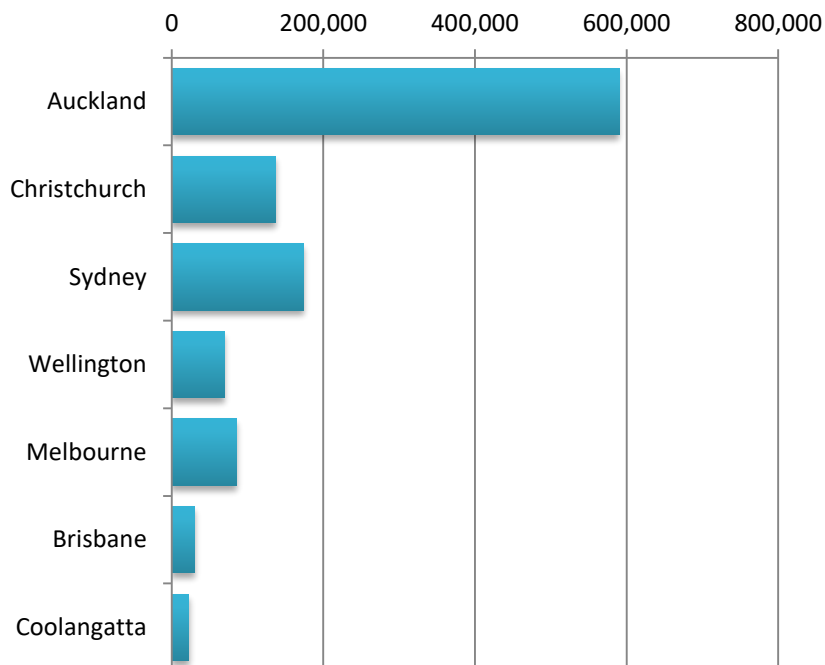
OPERATOR	AIRPORT	W16		W17		SEATS +/-	ATMS +/-		
		SEATS	ATMS	SEATS	ATMS				
JQ	Jetstar	AKL	Auckland International	2,880	16	2,880	16	0	0
		MEL	Melbourne	1,440	8	1,260	7	-180	-1
		OOL	Gold Coast Coolangatta	540	3	540	3	0	0
		SYD	Sydney Kingsford Smith	1,260	7	1,260	7	0	0
JQ Total				6,120	34	5,940	33	-180	-1
NZ	Air New Zealand	AKL	Auckland International	12,490	73	13,677	80	1,187	7
		CHC	Christchurch International	3,828	26	3,725	26	-103	0
		MEL	Melbourne	1,176	7	1,344	8	168	1
		SYD	Sydney Kingsford Smith	1,176	7	1,344	8	168	1
		WLG	Wellington International	1,982	14	2,221	16	239	2
NZ Total				20,652	127	22,311	138	1,659	11
QF	Qantas	SYD	Sydney Kingsford Smith	1,524	9	1,218	7	-306	-2
QF Total				1,524	9	1,218	7	-306	-2
VA	Virgin Australia	BNE	Brisbane International	1,056	6	1,232	7	176	1
		SYD	Sydney Kingsford Smith	880	5	1,056	6	176	1
VA Total				1,936	11	2,288	13	352	2

Air Transport Movements by Destination



Destination	ATM'S
Auckland	3,414
Christchurch	1,094
Sydney	998
Wellington	514
Melbourne	492
Brisbane	172
Coolangatta	126

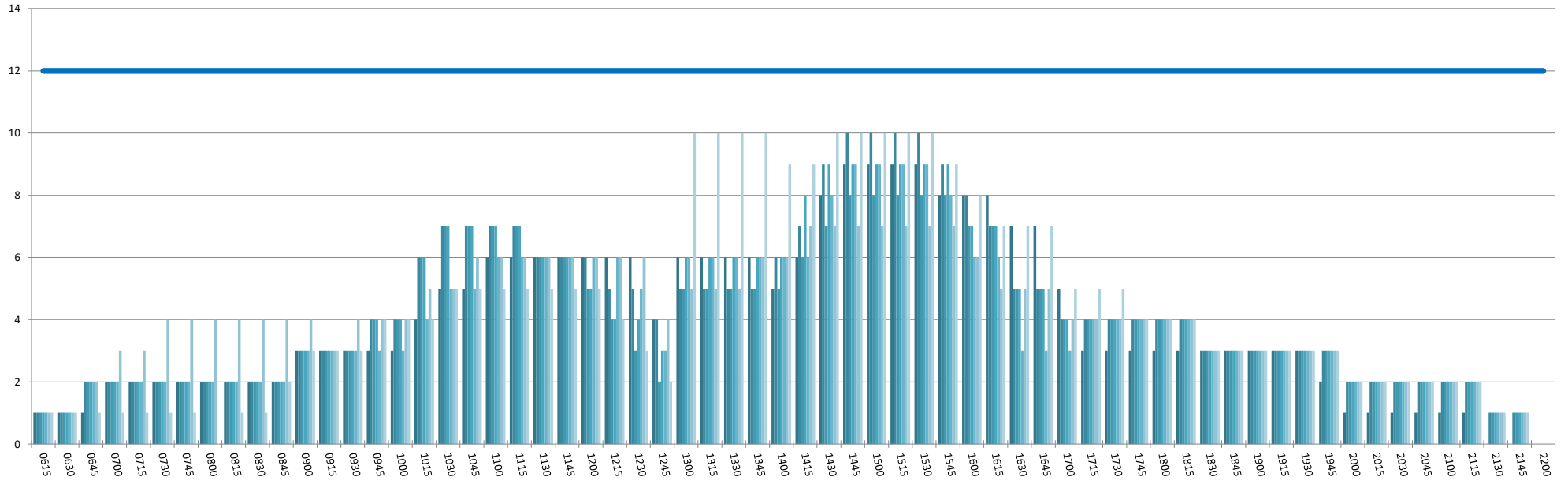
Air Transport Seats by Destination



Destination	SEATS
Auckland	590,016
Christchurch	137,432
Sydney	174,404
Wellington	69,560
Melbourne	85,824
Brisbane	30,272
Coolangatta	22,680

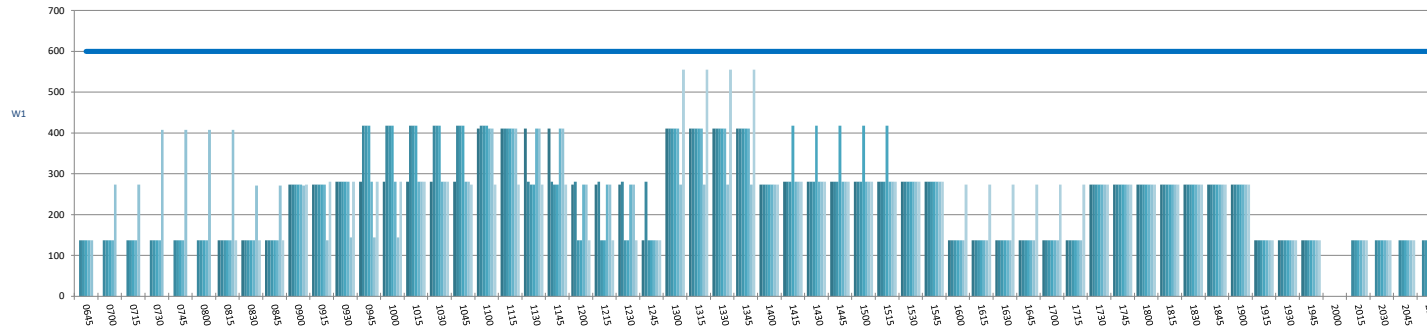
RUNWAY TOTAL UTILISATION PER 60 MINUTES (ROLLING EVERY 15 MINUTES)

Peak Week Movements per Hour - All times LOCAL



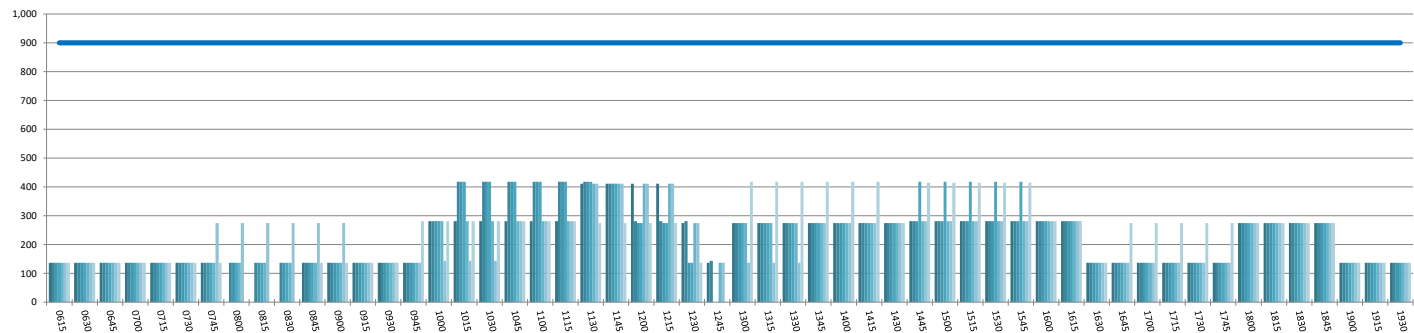
DOMESTIC TERMINAL ARRIVALS UTILISATION PER 60 MINUTES (ROLLING EVERY 15 MINUTES)

Peak Week Movements per Hour - All times LOCAL



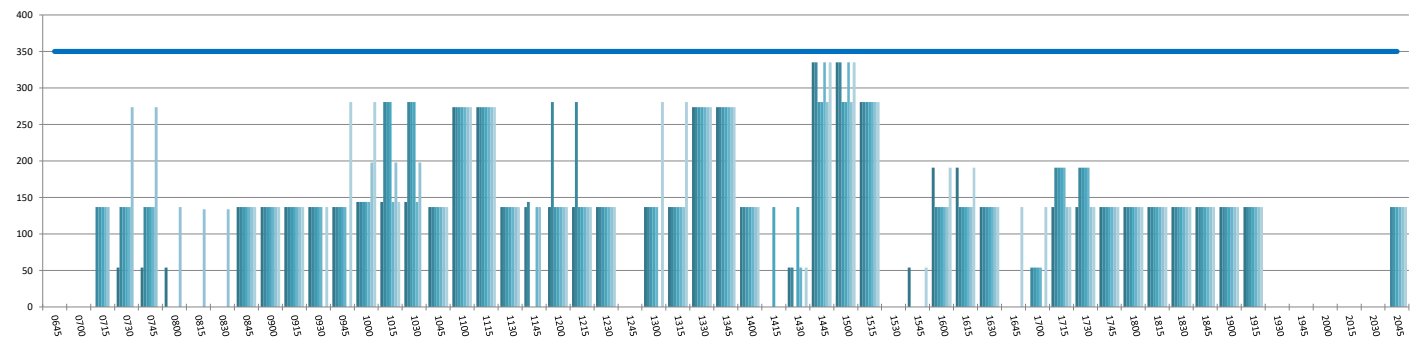
DOMESTIC TERMINAL DEPARTURES UTILISATION PER 60 MINUTES (ROLLING EVERY 15 MINUTES)

Peak Week Movements per Hour - All times LOCAL



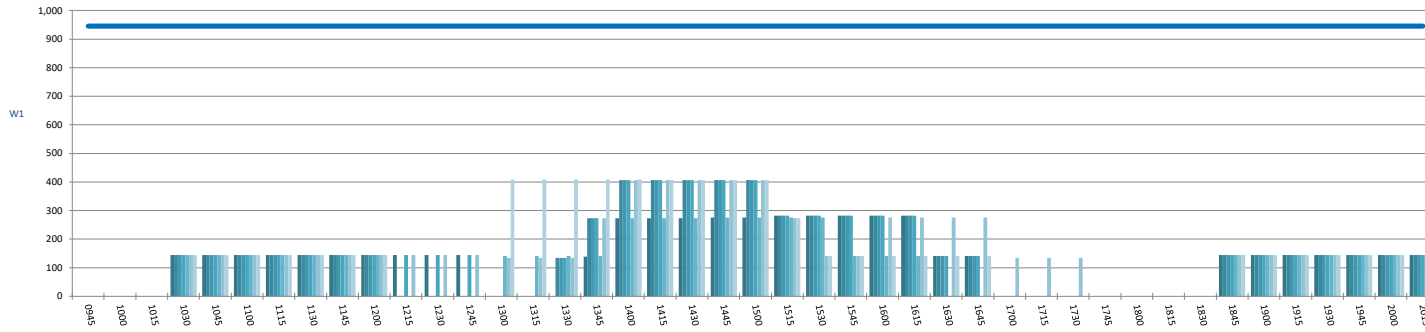
DOMESTIC TERMINAL ARRIVALS UTILISATION PER 30 MINUTES (ROLLING EVERY 15 MINUTES)

Peak Week Movements per Hour - All times LOCAL



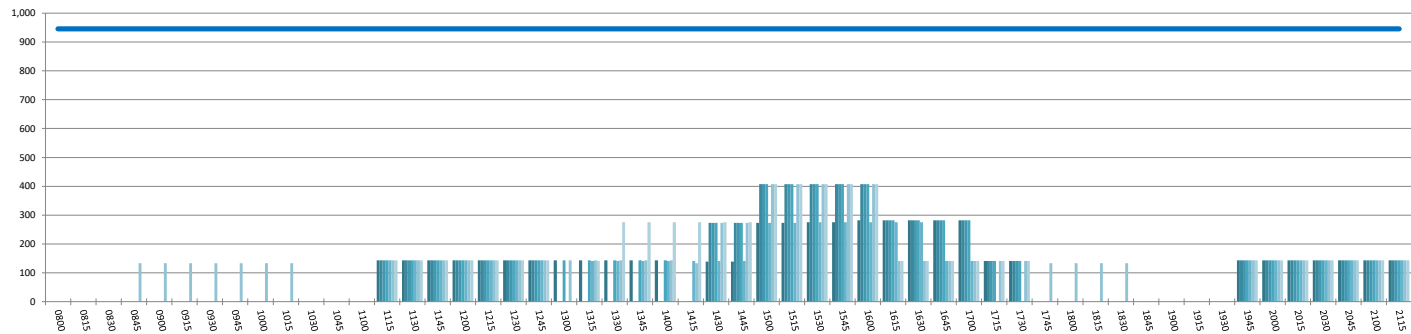
INTERNATIONAL TERMINAL ARRIVALS UTILISATION PER 60 MINUTES (ROLLING EVERY 15 MINUTES)

Peak Week Movements per Hour - All times LOCAL



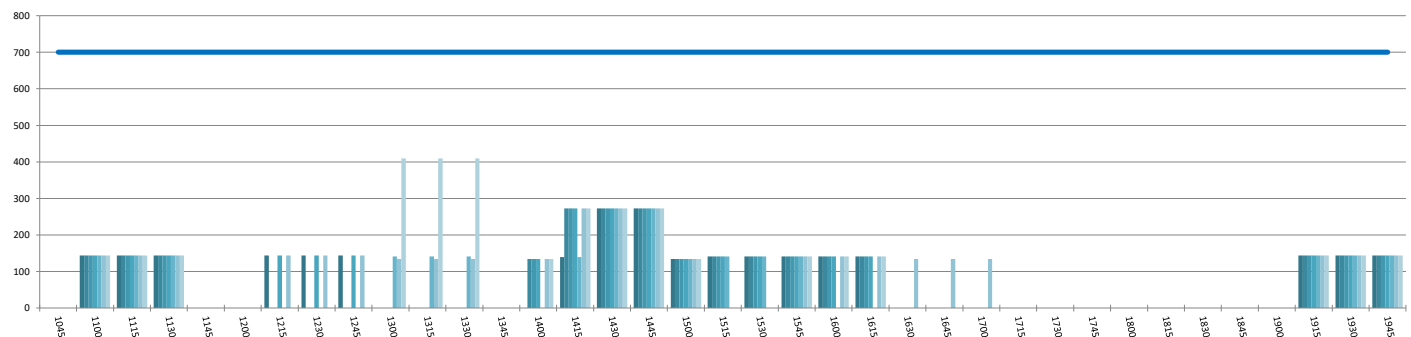
INTERNATIONAL TERMINAL DEPARTURES UTILISATION PER 60 MINUTES (ROLLING EVERY 15 MINUTES)

Peak Week Movements per Hour - All times LOCAL



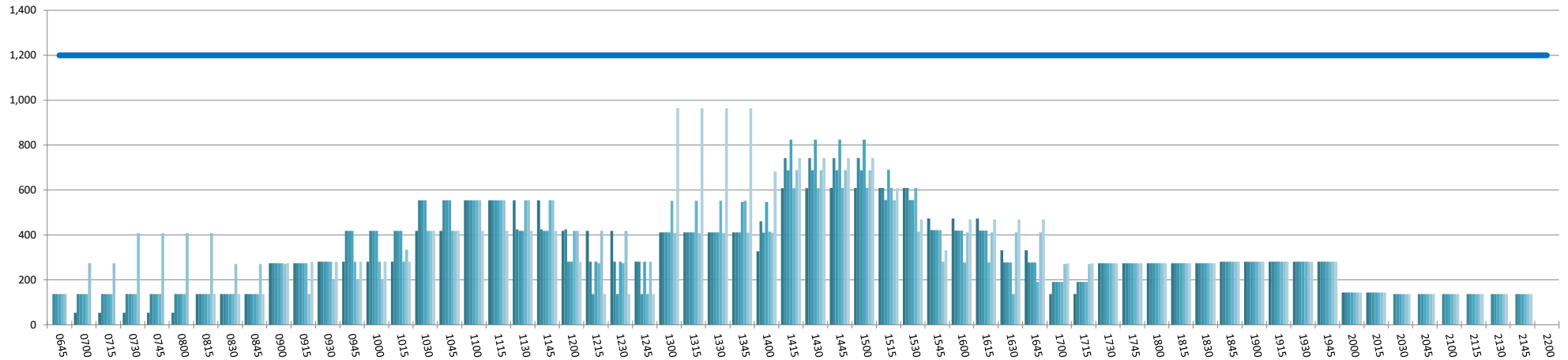
INTERNATIONAL TERMINAL ARRIVALS UTILISATION PER 30 MINUTES (ROLLING EVERY 15 MINUTES)

Peak Week Movements per Hour - All times LOCAL



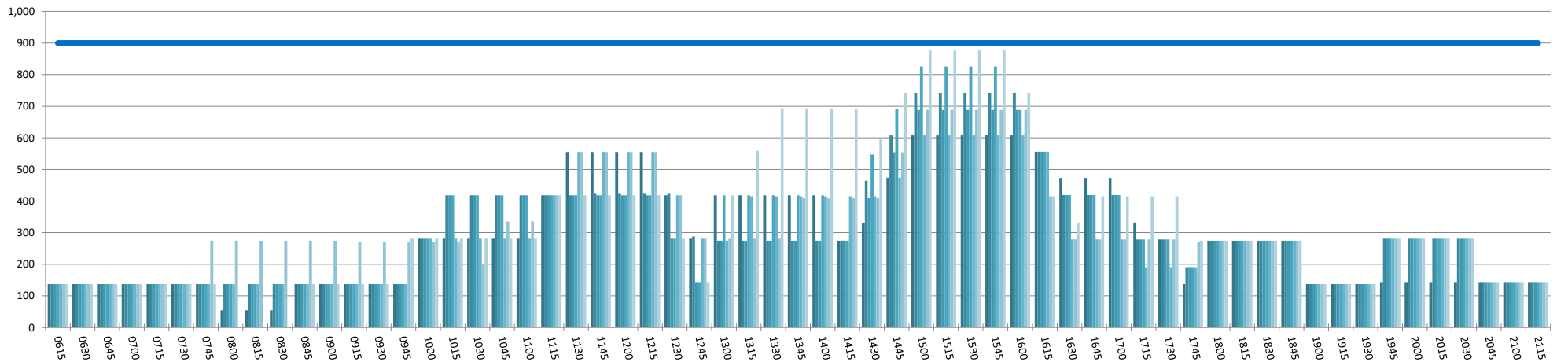
ENTIRE TERMINAL PASSENGER ARRIVALS UTILISATION PER 60 MINUTES (ROLLING EVERY 15 MINUTES)

Peak Week Movements per Hour - All times LOCAL



ENTIRE TERMINAL PASSENGER DEPARTURES UTILISATION PER 60 MINUTES (ROLLING EVERY 15 MINUTES)

Peak Week Movements per Hour - All times LOCAL



GLOSSARY OF TERMS

Air Transport Movement (ATM)	A scheduled or charter passenger or freight aircraft movement.
Allocation	The allocation of slots such that demand is constrained to fit within declared scheduling limits.
Common Travel Area (CTA)	Services to or from the Republic of Ireland and the Channel Islands.
W17 Start of Season Report	A scheduled or charter <u>passenger</u> aircraft movement (ie, excluding all-cargo aircraft movements).
Scheduling Limits	Limiting parameters declared by the Airport Operator used in the coordination process.
Seats	The number of seats based on the aircraft configuration advised by the airline.
Peak Week	The Peak Week for W17 is 01 to 07 Jan 2018
Data Snapshot	All data used for this report was as held 19 October 2017

GUIDE TO HISTOGRAMS

The histograms show the pattern of traffic by time of day against the appropriate scheduling limit. Each time period consist of seven columns representing the days-of-week, Monday through Sunday.