

AUCKLAND INTERNATIONAL AIRPORT

AKL

S18 Season Start Report (International Traffic)

Key Statistics	S17 Operated	S18 -Season Start	Percentage Change
Air Transport Movements	31,827	33,023	▲ 3.8%
Total Seats	7,793,149	8,028,951	▲ 3.0%
Seats per Passenger ATM	245	243	

Contents

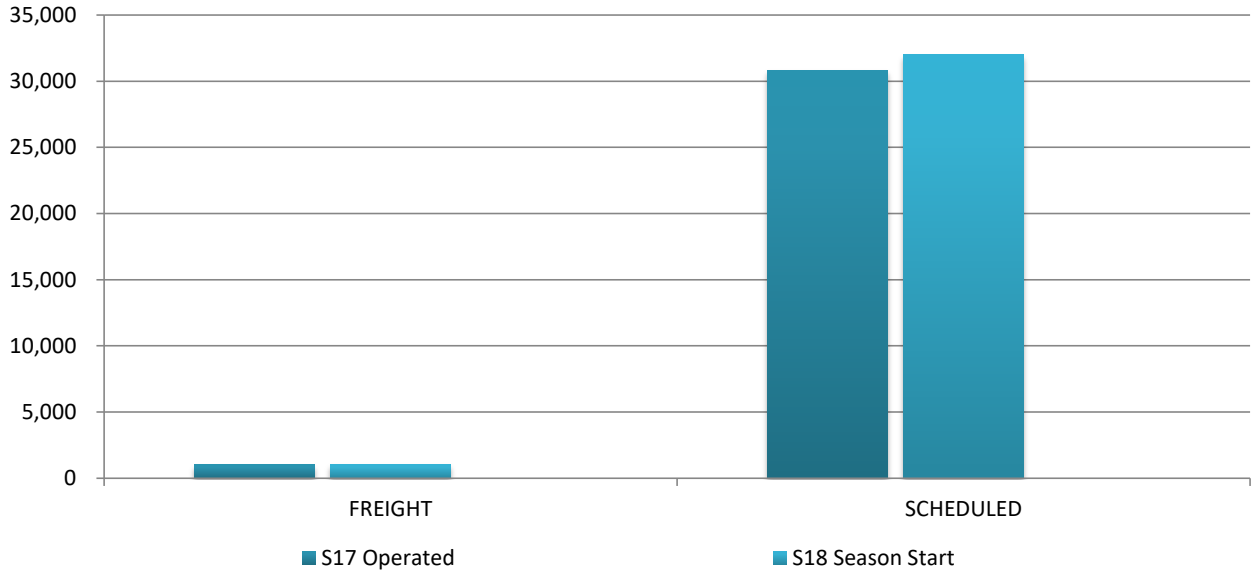
	Page
Movements and Seats by Service Type	2
Week Departure Frequencies by Carrier	3-5
Top 10 Airlines by ATM's and Seats	6
Top 20 Destinations by ATM's and Seats	7
International Terminal - Passengers per 60 Minutes	8-9
International Arrivals - Passengers per 30 Minutes	10
Glossary	11

Data in this report is current as of 10 March 2018

No warranty whether expressed or implied as to the completeness, accuracy, fitness for purpose, or satisfactory quality is given by ACL regarding the information in this report, which is provided by third parties. Accordingly, ACL excludes all liability with regard to such data.

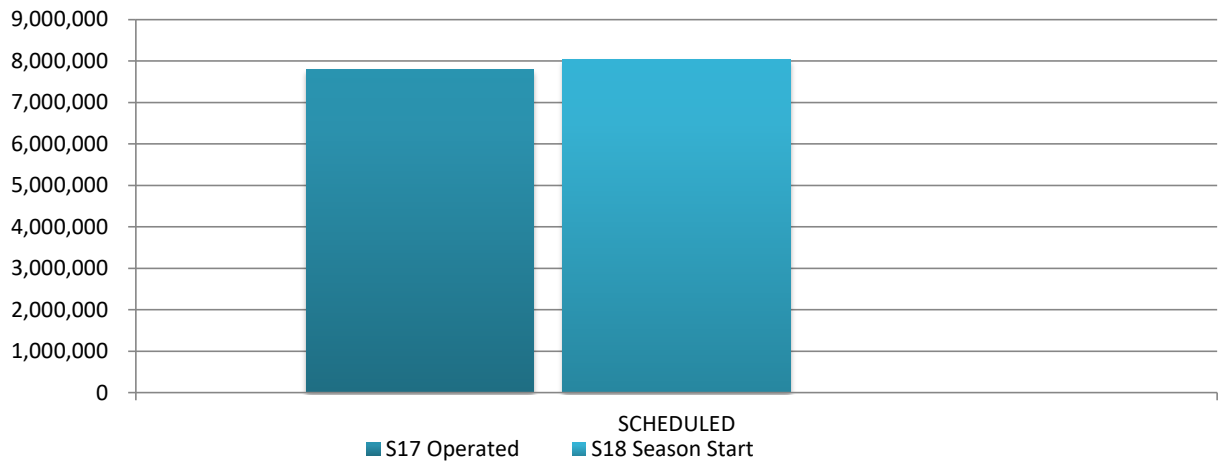
The contents of this report may not be reproduced without the written consent of ACL.

Full Season ATMs by Service Type



	S17 Operated	S18 Season Start	Percentage Change
FREIGHT	999	1,024	▲ 3%
SCHEDULED	30,828	31,999	▲ 3.8%
TOTAL	31,827	33,023	▲ 3.8%

Full Season Seats by Service Type



	S17 Operated	S18 Season Start	Percentage Change
SCHEDULED	7,793,149	8,028,951	▲ 3.0%
TOTAL	7,793,149	8,028,951	▲ 3.0%

INSERT AIRPORT TITLE AND SEASON

WEEK DEPARTURE FREQUENCIES - BY CARRIER

S18 09 to 15 July 2018

	OPERATOR	AIRPORT		S17		S18		SEATS +/-	ATMS +/-
				SEATS	ATMS	SEATS	ATMS		
3U	Sichuan Airlines	CTU	Chengdu	600	2	900	3	300	1
3U Total				600	2	900	3	300	1
AA	American Airlines	LAX	Los Angeles International	1,582	7	0	0	-1,582	-7
AA Total				1,582	7	0	0	-1,582	-7
CA	Air China	PEK	Beijing Capital	1,172	4	1,172	4	0	0
CA Total				1,172	4	1,172	4	0	0
CI	China Airlines	TPE	Taipei Chiang Kai Shek	921	3	2,142	7	1,221	4
CI Total				921	3	2,142	7	1,221	4
CX	Cathay Pacific	HKG	Hong Kong Int'L	1,960	7	1,960	7	0	0
CX Total				1,960	7	1,960	7	0	0
CZ	China Southern Airlines	CAN	Guangzhou Baiyun	2,170	10	2,170	10	0	0
CZ Total				2,170	10	2,170	10	0	0
D7	Air AsiaX	OOL	Gold Coast Coolangatta	2,639	7	2,639	7	0	0
D7 Total				2,639	7	2,639	7	0	0
EK	Emirates	DXB	Dubai	10,283	21	5,915	14	-4,368	-7
EK Total				10,283	21	5,915	14	-4,368	-7
FJ	Fiji Airways	NAN	Nadi International	2,182	13	3,492	17	1,310	4
		SUV	Nausori International Airport	408	3	408	3	0	0
FJ Total				2,590	16	3,900	20	1,310	4
FX	Fedex	CAN	Guangzhou Baiyun	0	1	0	1	0	0
FX Total				0	1	0	1	0	0
GS	Tianjin Airlines	TSN	Tianjin	520	2	520	2	0	0
GS Total				520	2	520	2	0	0
HA	Hawaiian Airlines	HNL	Honolulu International	834	3	1,390	5	556	2
HA Total				834	3	1,390	5	556	2
HJ	Tasman Pacific Airlines (DHL)	SYD	Sydney Kingsford Smith	0	5	0	5	0	0
HJ Total				0	5	0	5	0	0
HU	Hainan Airlines	SZX	Shenzhen	520	2	520	2	0	0
HU Total				520	2	520	2	0	0
HX	Hong Kong Airlines	HKG	Hong Kong Int'L	1,981	7	1,981	7	0	0
HX Total				1,981	7	1,981	7	0	0
JQ	Jetstar	MEL	Melbourne	1,440	8	1,440	8	0	0
		OOL	Gold Coast Coolangatta	1,260	7	1,260	7	0	0
		RAR	Rarotonga	540	3	540	3	0	0
		SYD	Sydney Kingsford Smith	1,260	7	1,260	7	0	0
JQ Total				4,500	25	4,500	25	0	0
KE	Korean Air	ICN	Seoul Incheon Intl	1,164	4	1,240	5	76	1
KE Total				1,164	4	1,240	5	76	1
LA	Lan Airlines	SCL	Santiago Arturo Merino Benitez	2,177	7	2,100	7	-77	0
		SYD	Sydney Kingsford Smith	2,177	7	2,100	7	-77	0
LA Total				4,354	14	4,200	14	-154	0
MH	Malaysia Airlines	KUL	Kuala Lumpur Int'L	2,030	7	2,030	7	0	0

INSERT AIRPORT TITLE AND SEASON

WEEK DEPARTURE FREQUENCIES - BY CARRIER

S18 09 to 15 July 2018

OPERATOR	AIRPORT	S17		S18		SEATS +/-	ATMS +/-
		SEATS	ATMS	SEATS	ATMS		
MH Total		2,030	7	2,030	7	0	0
MU	China Eastern Airlines PVG Shanghai Pu Dong	1,834	7	1,834	7	0	0
MU Total		1,834	7	1,834	7	0	0
NF	Air Vanuatu VLI Vanuatu	680	4	680	4	0	0
NF Total		680	4	680	4	0	0
NZ	Air New Zealand						
	ADL Adelaide	840	5	1,074	4	234	-1
	APW Apia Faleolo	2,068	9	2,662	11	594	2
	BNE Brisbane International	3,738	15	4,410	19	672	4
	CNS Cairns	1,118	5	1,310	7	192	2
	DPS Denpasar Bali Ngurah Rai	906	3	1,510	5	604	2
	EZE Buenos Aires Ministro Pistarini	906	3	906	3	0	0
	HKG Hong Kong Int'L	2,184	7	2,184	7	0	0
	HND Tokyo Haneda	604	2	936	3	332	1
	HNL Honolulu International	2,124	7	2,808	9	684	2
	IAH Houston	1,552	5	1,925	7	373	2
	IUE Niue International Airport	336	2	336	2	0	0
	LAX Los Angeles International	2,706	8	2,706	8	0	0
	LHR London Heathrow	2,394	7	2,394	7	0	0
	MCY Sunshine Coast Airport	672	4	672	4	0	0
	MEL Melbourne	6,050	23	6,174	23	124	0
	NAN Nadi International	4,692	20	4,692	20	0	0
	NOU Noumea	504	3	504	3	0	0

INSERT AIRPORT TITLE AND SEASON

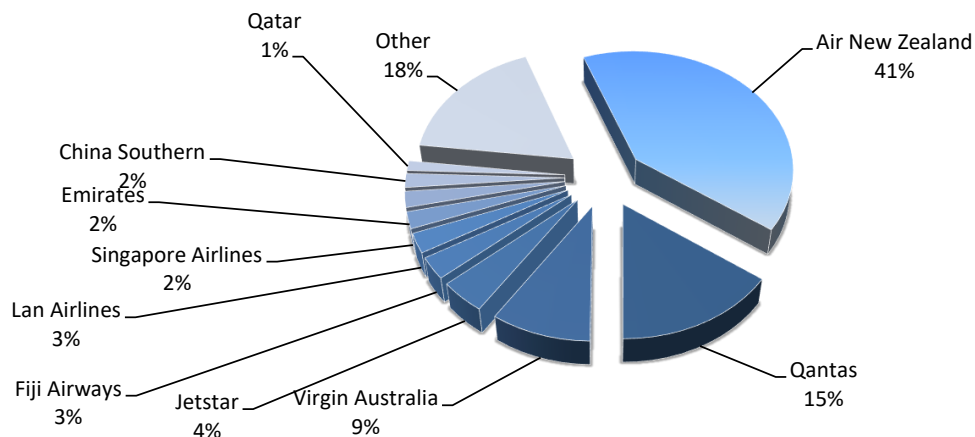
WEEK DEPARTURE FREQUENCIES - BY CARRIER

S18 09 to 15 July 2018

OPERATOR	AIRPORT	S17		S18		SEATS +/-	ATMS +/-
		SEATS	ATMS	SEATS	ATMS		
	NRT Tokyo Narita	2,114	7	2,114	7	0	0
	OOL Gold Coast Coolangatta	1,176	7	1,176	7	0	0
	PER Perth	2,114	7	2,114	7	0	0
	PPT Papeete Faaa	916	3	916	3	0	0
	PVG Shanghai Pu Dong	2,114	7	2,114	7	0	0
	RAR Rarotonga	2,192	9	2,538	11	346	2
	SFO San Francisco International	2,364	7	2,364	7	0	0
	SGN Ho Chi Minh City	604	2	604	2	0	0
	SIN Singapore Changi	2,114	7	2,114	7	0	0
	SYD Sydney Kingsford Smith	8,658	32	8,494	32	-164	0
	TBU Nuku'Alofa Fua'Amotu Internationa	1,440	6	1,584	6	144	0
	YVR Vancouver	1,560	5	2,184	7	624	2
NZ Total		60,760	227	65,519	245	4,759	18
OL	Samoan Airlines	APW	Apia Faleolo	0	0	1,190	7
OL Total		0	0	1,190	7	1,190	7
ON	Norfolk Airlines	NLK	Norfolk Island Airport	130	1	0	0
ON Total		130	1	0	0	-130	-1
PR	Philippine Airlines	MNL	Manila	624	4	762	3
PR Total		624	4	762	3	138	-1
QF	Qantas	BNE	Brisbane International	2,262	13	3,463	16
		MEL	Melbourne	3,654	21	6,315	28
		SYD	Sydney Kingsford Smith	7,351	41	7,461	41
QF Total		13,267	75	17,239	85	3,972	10
QR	Qatar Airways	DOH	Doha	1,813	7	1,813	7
QR Total		1,813	7	1,813	7	0	0
SB	Aircalin Air Caledonie Int	NOU	Noumea	462	3	474	3
SB Total		462	3	474	3	12	0
SQ	Singapore Airlines	HKG	Hong Kong Int'L	0	1	0	0
		SIN	Singapore Changi	1,848	12	1,848	12
SQ Total		1,848	13	1,848	12	0	-1
TG	Thai Airways International Public Lt	BKK	Bangkok International	1,460	5	2,086	7
TG Total		1,460	5	2,086	7	626	2
TN	Air Tahiti Nui	LAX	Los Angeles International	882	3	882	3
TN Total		882	3	882	3	0	0
VA	Virgin Australia	APW	Apia Faleolo	1,232	7	0	0
		BNE	Brisbane International	2,288	13	2,464	14
		MEL	Melbourne	1,760	10	1,936	11
		OOL	Gold Coast Coolangatta	1,232	7	1,232	7
		RAR	Rarotonga	704	4	880	5
		SYD	Sydney Kingsford Smith	1,584	9	2,112	12
		TBU	Nuku'Alofa Fua'Amotu Internationa	352	2	528	3
VA Total		9,152	52	9,152	52	0	0

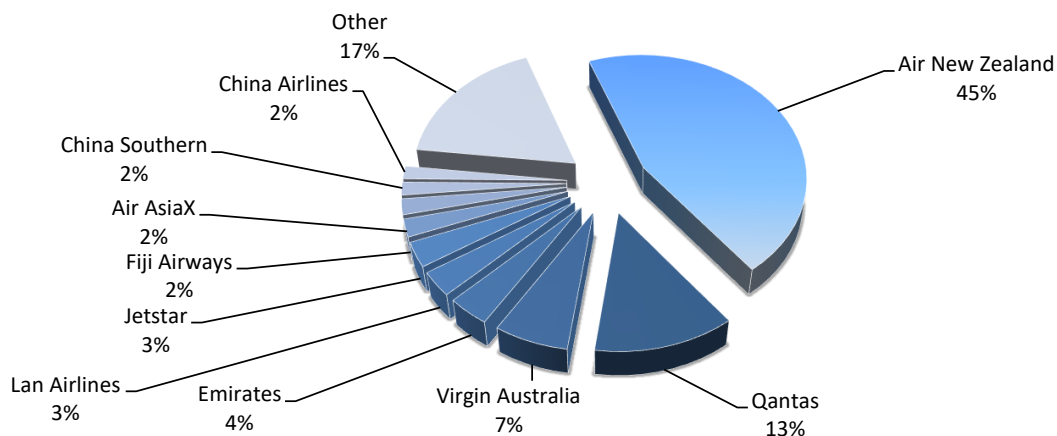
Top 10 Airlines by Air Transport Movements (ATMs)

Airline	Movements
Air New Zealand	13,333
Qantas	5,057
Virgin Australia	3,068
Jetstar	1,429
Fiji Airways	974
Lan Airlines	868
Singapore Airlines	742
Emirates	704
China Southern	618
Qatar	434
Other	5,796

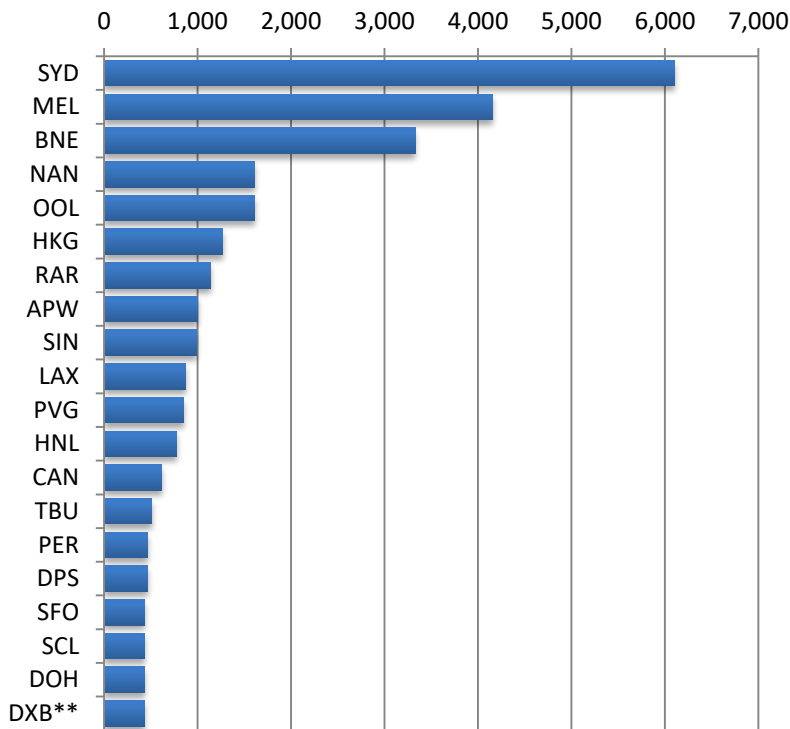


Top 10 Airlines by Air Seats

Airline	Seats
Air New Zealand	3,615,801
Qantas	1,020,674
Virgin Australia	539,968
Emirates	308,674
Lan Airlines	260,400
Jetstar	257,220
Fiji Airways	182,546
Air AsiaX	163,618
China Southern	134,736
China Airlines	132,806
Other	1,412,508



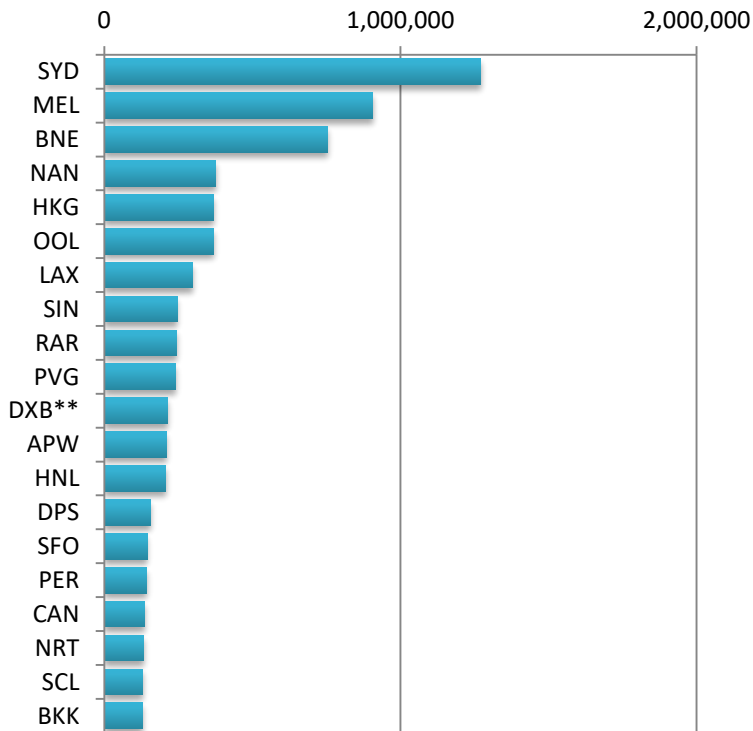
Air Transport Top 20 Movements by Destination



Destination	ATM'S
SYD	6,098
MEL	4,158
BNE	3,327
NAN	1,610
OOL	1,606
HKG	1,265
RAR	1,136
APW	1,005
SIN	992
LAX	867
PVG	846
HNL	770
CAN	618
TBU	508
PER	469
DPS	468
SFO	434
SCL	434
DOH	434
DXB**	434

** EK DXB Direct service

Air Transport Top 20 Seats by Destination

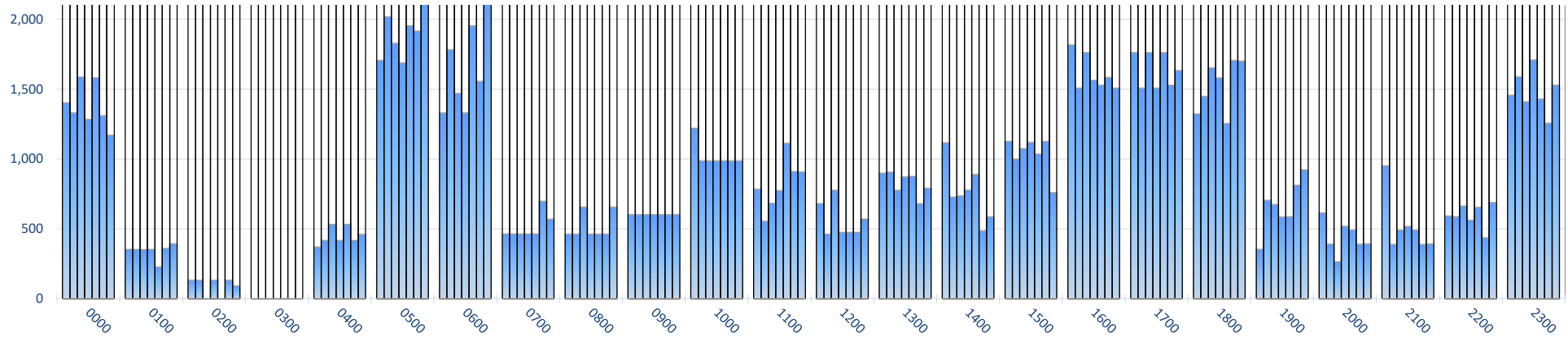


Destination	SEATS
SYD	1,271,567
MEL	906,260
BNE	751,896
NAN	374,550
HKG	369,288
OOL	368,402
LAX	296,514
SIN	245,998
RAR	243,678
PVG	239,012
DXB**	213,094
APW	210,428
HNL	208,024
DPS	155,376
SFO	144,258
PER	141,592
CAN	134,736
NRT	131,068
SCL	130,200
BKK	129,332

** EK DXB Direct service

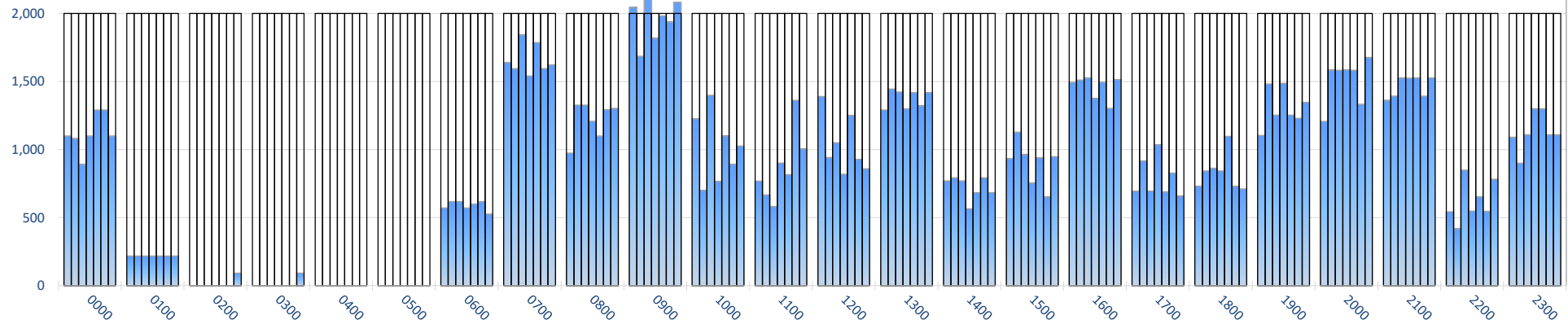
INTERNATIONAL TERMINAL ARRIVALS (PER 60 MINUTES, ROLLING EVERY 5 MINUTES)

Week Movements per Hour - All times LOCAL



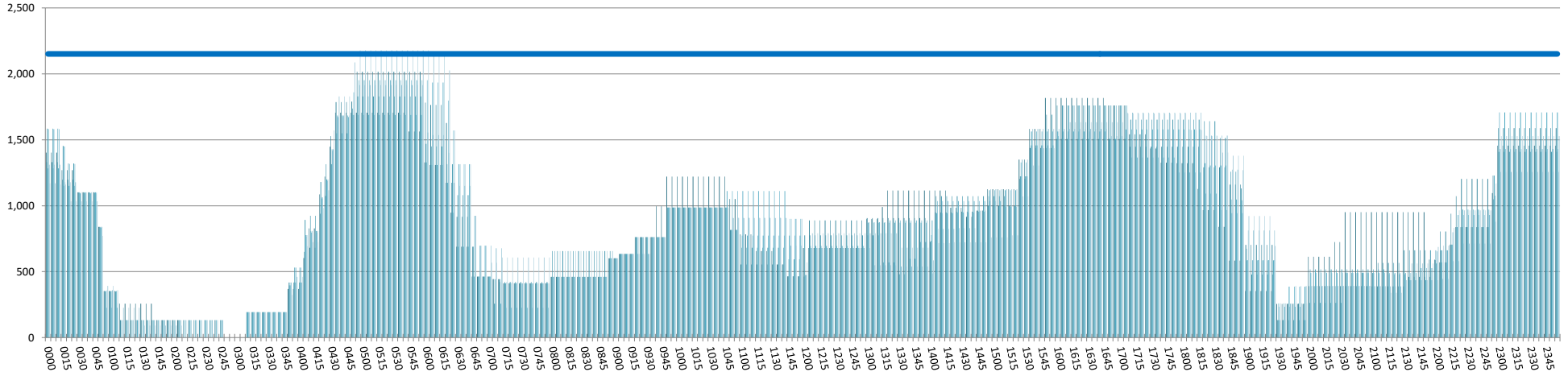
INTERNATIONAL TERMINAL DEPARTURES (PER 60 MINUTES, ROLLING EVERY 5 MINUTES)

Week Movements per Hour - All times LOCAL



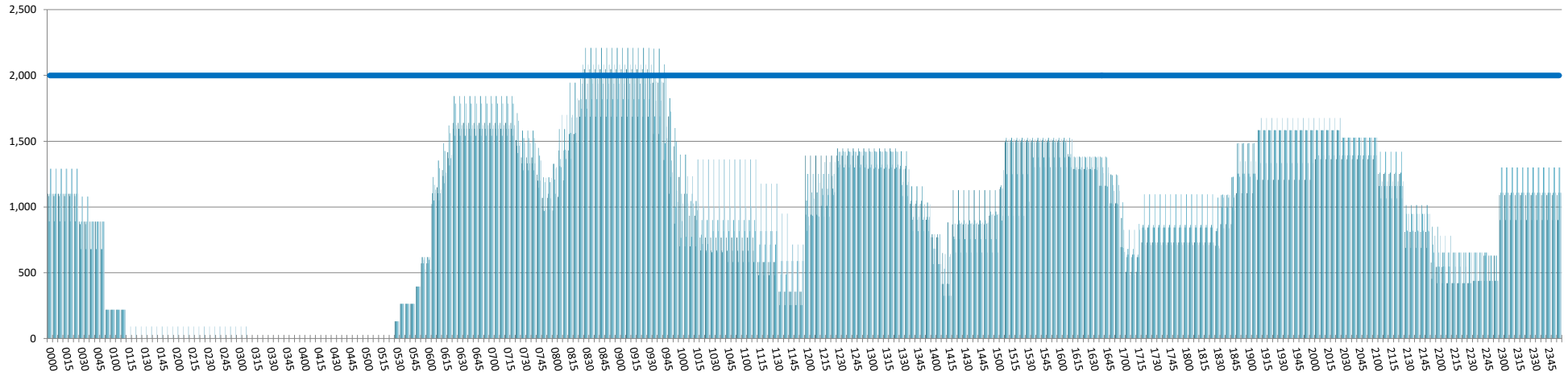
INTERNATIONAL TERMINAL ARRIVALS (PER 60 MINUTES, ROLLING EVERY 5 MINUTES)

Week Movements per Hour - All times LOCAL



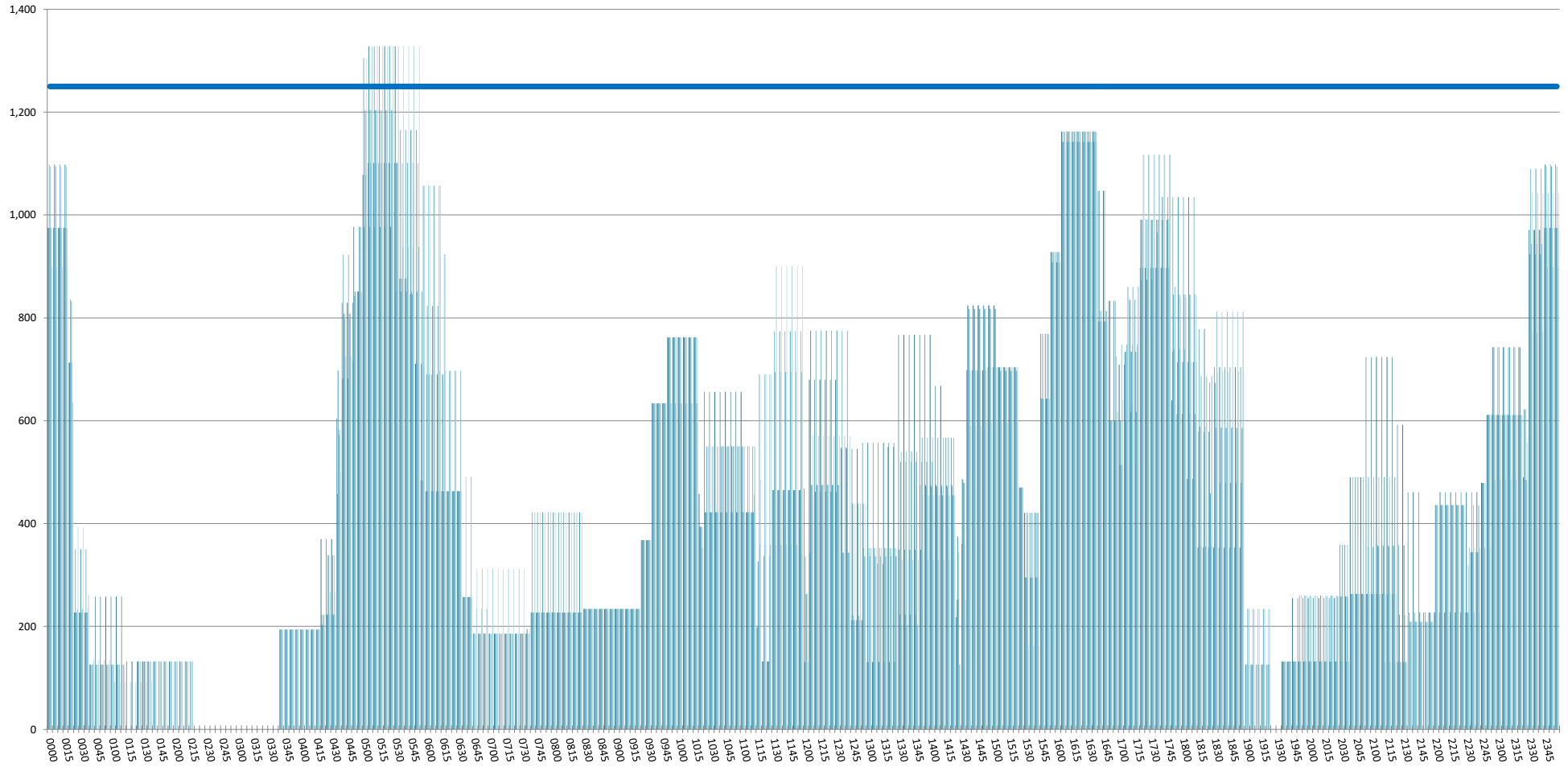
INTERNATIONAL TERMINAL DEPARTURES (PER 60 MINUTES, ROLLING EVERY 5 MINUTES)

Week Movements per Hour - All times LOCAL



INTERNATIONAL TERMINAL ARRIVALS (PER 30 MINUTES, ROLLING EVERY 5 MINUTES)

Week Movements - All times LOCAL



GLOSSARY OF TERMS

Air Transport Movement (ATM)	A scheduled or charter passenger or freight aircraft movement.
Allocation	The allocation of slots such that demand is constrained to fit within declared scheduling limits.
Common Travel Area (CTA)	Services to or from the Republic of Ireland and the Channel Islands.
Demand	The unconstrained demand for slots, prior to any schedule adjustments.
Passenger ATM	A scheduled or charter <u>passenger</u> aircraft movement (ie, excluding all-cargo aircraft movements).
Scheduling Limits	Limiting parameters declared by the Airport Operator used in the coordination process.
Seats	The number of seats based on the aircraft configuration advised by the airline.
Average Week	W15 09 to 15 July 2018
Data Snapshot	All data used for this report was as held 10 March 2018

GUIDE TO HISTOGRAMS

The histograms show the pattern of traffic by time of day against the appropriate scheduling limit. Each time period consist of seven columns representing the days-of-week, Monday through Sunday.