

# Stansted Airport (STN)

Winter 2019/20 (W19)



## Start of Season Report

Report Date: Thu 12-Sep-2019

### Headlines

	W19 Start	vs. W18 Start	vs. W18 End
Total Air Transport Movements (Passenger & Freight)	67,748	▼ -7.4%	▼ -3.4%
Total Passenger Air Transport Movements	62,020	▼ -8.6%	▼ -4.7%
Total Passenger Air Transport Movement Seats	11,519,498	▼ -7.6%	▼ -3.5%
Average Seats per Passenger Air Transport Movement	185.74	▲ 1.1%	▲ 1.3%
Percentage of allocated slots cleared as requested (OK)	99%		

### Contents

Page	Content
2	Runway Scheduling Limits
3	ATM Allocation by Operator (Full season and Peak Week Comparison)
4	Significant Route Changes
5	Full Season - ATM Analysis
6	Full Season - PATM Seats Analysis
7	Full Season - Terminal Analysis
8	Full Season - Aircraft Size Analysis
9	Full Season - Seasonality
10	Peak Week - Hourly Runway Demand
11	Peak Week - Hourly Runway Allocation
12	Peak Week - Hourly Runway Allocation Comparison (W19 Start vs. W18 Start)
13	Peak Week - Hourly Runway Allocation Comparison (W19 Start vs. W18 End)
14	Peak Week Histogram - Departure Passengers (T60) - All Terminals - All Operators
15	Peak Week Histogram - Departure Passengers (T60/15) - All Terminals - All Operators
16	Peak Week Histogram - Departure Passengers (T120/15) - All Terminals - All Operators
17	Peak Week Histogram - Arrival Passengers (T60) - 11 - All Operators
18	Peak Week Histogram - Arrival Passengers (T60/15) - 11 - All Operators
19	Glossary

W18 scheduling season runs from Sun 28-Oct-2018 to Sat 30-Mar-2019 (154 days).

W19 scheduling season runs from Sun 27-Oct-2019 to Sat 28-Mar-2020 (154 days).

### Disclaimer

No warranty whether expressed or implied as to the completeness, accuracy, fitness for purpose, or satisfactory quality is given by ACL regarding the information in this report, which is provided by third parties. Accordingly, ACL excludes all liability with regard to such data.

The contents of this report may not be reproduced without the written consent of ACL.

# Runway Scheduling Limits



## Declared Hourly Movement Capacity

W18 Arrivals								Change: W18 to W19								W19 Arrivals							
Hour	Mon	Tue	Wed	Thu	Fri	Sat	Sun	Hour	Mon	Tue	Wed	Thu	Fri	Sat	Sun	Hour	Mon	Tue	Wed	Thu	Fri	Sat	Sun
UTC	1	2	3	4	5	6	7	UTC	1	2	3	4	5	6	7	UTC	1	2	3	4	5	6	7
00	24	24	24	24	24	24	24	00								00	24	24	24	24	24	24	24
01	24	24	24	24	24	24	24	01								01	24	24	24	24	24	24	24
02	24	24	24	24	24	24	24	02								02	24	24	24	24	24	24	24
03	24	24	24	24	24	24	24	03								03	24	24	24	24	24	24	24
04	24	24	24	24	24	24	24	04								04	24	24	24	24	24	24	24
05	24	24	24	24	24	24	24	05								05	24	24	24	24	24	24	24
06	24	24	24	24	24	24	24	06								06	24	24	24	24	24	24	24
07	28	28	28	28	28	28	28	07								07	28	28	28	28	28	28	28
08	27	27	27	27	27	27	27	08								08	27	27	27	27	27	27	27
09	27	27	27	27	27	27	27	09								09	27	27	27	27	27	27	27
10	27	27	27	27	27	27	27	10								10	27	27	27	27	27	27	27
11	28	28	28	28	28	28	28	11								11	28	28	28	28	28	28	28
12	28	28	28	28	28	28	28	12								12	28	28	28	28	28	28	28
13	27	27	27	27	27	27	27	13								13	27	27	27	27	27	27	27
14	27	27	27	27	27	27	27	14								14	27	27	27	27	27	27	27
15	28	28	28	28	28	28	28	15								15	28	28	28	28	28	28	28
16	28	28	28	28	28	28	28	16								16	28	28	28	28	28	28	28
17	28	28	28	28	28	28	28	17								17	28	28	28	28	28	28	28
18	28	28	28	28	28	28	28	18								18	28	28	28	28	28	28	28
19	28	28	28	28	28	28	28	19								19	28	28	28	28	28	28	28
20	27	27	27	27	27	27	27	20								20	27	27	27	27	27	27	27
21	27	27	27	27	27	27	27	21								21	27	27	27	27	27	27	27
22	24	24	24	24	24	24	24	22								22	24	24	24	24	24	24	24
23	24	24	24	24	24	24	24	23								23	24	24	24	24	24	24	24

W18 Departures								Change: W18 to W19								W19 Departures							
Hour	Mon	Tue	Wed	Thu	Fri	Sat	Sun	Hour	Mon	Tue	Wed	Thu	Fri	Sat	Sun	Hour	Mon	Tue	Wed	Thu	Fri	Sat	Sun
UTC	1	2	3	4	5	6	7	UTC	1	2	3	4	5	6	7	UTC	1	2	3	4	5	6	7
00	24	24	24	24	24	24	24	00								00	24	24	24	24	24	24	24
01	24	24	24	24	24	24	24	01								01	24	24	24	24	24	24	24
02	24	24	24	24	24	24	24	02								02	24	24	24	24	24	24	24
03	24	24	24	24	24	24	24	03								03	24	24	24	24	24	24	24
04	24	24	24	24	24	24	24	04								04	24	24	24	24	24	24	24
05	24	24	24	24	24	24	24	05								05	24	24	24	24	24	24	24
06	33	33	33	33	33	33	33	06								06	33	33	33	33	33	33	33
07	33	33	33	33	33	33	33	07								07	33	33	33	33	33	33	33
08	27	27	27	27	27	27	27	08								08	27	27	27	27	27	27	27
09	27	27	27	27	27	27	27	09								09	27	27	27	27	27	27	27
10	27	27	27	27	27	27	27	10								10	27	27	27	27	27	27	27
11	28	28	28	28	28	28	28	11								11	28	28	28	28	28	28	28
12	28	28	28	28	28	28	28	12								12	28	28	28	28	28	28	28
13	27	27	27	27	27	27	27	13								13	27	27	27	27	27	27	27
14	27	27	27	27	27	27	27	14								14	27	27	27	27	27	27	27
15	28	28	28	28	28	28	28	15								15	28	28	28	28	28	28	28
16	28	28	28	28	28	28	28	16								16	28	28	28	28	28	28	28
17	28	28	28	28	28	28	28	17								17	28	28	28	28	28	28	28
18	28	28	28	28	28	28	28	18								18	28	28	28	28	28	28	28
19	28	28	28	28	28	28	28	19								19	28	28	28	28	28	28	28
20	27	27	27	27	27	27	27	20								20	27	27	27	27	27	27	27
21	27	27	27	27	27	27	27	21								21	27	27	27	27	27	27	27
22	24	24	24	24	24	24	24	22								22	24	24	24	24	24	24	24
23	24	24	24	24	24	24	24	23								23	24	24	24	24	24	24	24

W18 Totals								Change: W18 to W19								W19 Totals							
Hour	Mon	Tue	Wed	Thu	Fri	Sat	Sun	Hour	Mon	Tue	Wed	Thu	Fri	Sat	Sun	Hour	Mon	Tue	Wed	Thu	Fri	Sat	Sun
UTC	1	2	3	4	5	6	7	UTC	1	2	3	4	5	6	7	UTC	1	2	3	4	5	6	7
00	36	36	36	36	36	36	36	00								00	36	36	36	36	36	36	36
01	36	36	36	36	36	36	36	01								01	36	36	36	36	36	36	36
02	36	36	36	36	36	36	36	02								02	36	36	36	36	36	36	36
03	36	36	36	36	36	36	36	03								03	36	36	36	36	36	36	36
04	36	36	36	36	36	36	36	04								04	36	36	36	36	36	36	36
05	36	36	36	36	36	36	36	05								05	36	36	36	36	36	36	36
06	44	44	44	44	44	44	44	06								06	44	44	44	44	44	44	44
07	48	48	48	48	48	48	48	07								07	48	48	48	48	48	48	48
08	46	46	46	46	46	46	46	08								08	46	46	46	46	46	46	46
09	42	42	42	42	42	42	42	09								09	42	42	42	42	42	42	42
10	42	42	42	42	42	42	42	10								10	42	42	42	42	42	42	42
11	50	50	50	50	50	50	50	11								11	50	50	50	50	50	50	50
12	44	44	44	44	44	44	44	12								12	44	44	44	44	44	44	44
13	42	42	42	42	42	42	42	13								13	42	42	42	42	42	42	42
14	42	42	42	42	42	42	42	14								14	42	42	42	42	42	42	42
15	44	44	44	44	44	44	44	15								15	44	44	44	44	44	44	44
16	42	42	42	42	42	42	42	16								16	42	42	42	42	42	42	42
17	44	44	44	44	44	44	44	17								17	44	44	44	44	44	44	44
18	50	50	50	50	50	50	50	18								18	50	50	50	50	50	50	50
19	48	48	48	48	48	48	48	19								19	48	48	48	48	48	48	48
20	42	42	42	42	42	42	42	20								20	42	42	42	42	42	42	42
21	42	42	42	42	42	42	42	21								21	42	42	42	42	42	42	42
22	42	42	42	42	42	42	42	22								22	42	42	42	42	42	42	42
23	36	36	36	36	36	36	36	23								23	36	36	36	36	36	36	36

# Air Transport Movement Allocation by Operator

Comparison between W18 End vs. W19 Start



Operator	FULL SEASON ALLOCATION								PEAK WEEK ALLOCATION							
	W18 ATMs	W19 ATMs	+/- change	W19 Rank	W18 Seats	W19 Seats	+/- change	W19 Rank	W18 ATMs	W19 ATMs	+/- change	W19 Rank	W18 Seats	W19 Seats	+/- change	W19 Rank
Aeronebus	-	2	2	41	-	192	192	27	-	-	0	38	-	-	0	24
Air Arabia Maroc	-	-	0	45	-	-	0	30	-	-	0	38	-	-	0	24
Air Atlanta Icelandic	-1	22	21	36	-	-	0	30	-	-	0	38	-	-	0	24
Cargolux	-	-	0	45	-	-	0	30	-	-	0	38	-	-	0	24
Air Corsica	12	-	-12	45	2,160	-	-2,160	30	-	-	0	38	-	-	0	24
Air Moldova	216	220	4	16	38,916	39,600	684	10	10	10	0	17	1,798	1,800	2	10
Air Nostrum	1	-	-1	45	100	-	-100	30	-	-	0	38	-	-	0	24
AirBridgeCargo	2	-	-2	45	-	-	0	30	-	-	0	38	-	-	0	24
AlbaStar	2	-	-2	45	378	-	-378	30	-	-	0	38	-	-	0	24
Albawings	-	144	144	24	-	18,432	18,432	12	-	6	6	26	-	768	768	16
Allied Air Ltd	2	-	-2	45	-	-	0	30	-	-	0	38	-	-	0	24
Antonov Airlines	1	-	-1	45	-	-	0	30	-	-	0	38	-	-	0	24
Arkea	82	-	-82	45	16,712	-	-16,712	30	2	-	-2	38	438	-	-438	24
Asiana Airlines	86	88	2	29	-	-	0	30	4	4	0	29	-	-	0	24
ASL Airlines Belgium	160	170	10	23	-	-	0	30	8	8	0	21	-	-	0	24
ASL Airlines France	2	-	-2	45	-	-	0	30	-	-	0	38	-	-	0	24
ASL Airlines Ireland	2	-	-2	45	-	-	0	30	-	-	0	38	-	-	0	24
Astral Aviation	4	-	-4	45	-	-	0	30	-	-	0	38	-	-	0	24
Atlas Air Inc	88	88	0	29	-	-	0	30	4	4	0	29	-	-	0	24
AtlasGlobal	304	308	4	14	55,816	62,832	7,016	7	14	14	0	14	2,344	2,856	512	8
Aurigny Air Services	185	182	-3	20	12,936	13,104	168	17	8	8	0	21	576	576	0	19
Austrian Airlines	23	25	2	35	3,424	3,600	176	20	4	2	-2	32	688	288	-400	21
Azerbaijan Airlines	2	-	-2	45	348	-	-348	30	-	-	0	38	-	-	0	24
BA Cityflyer	1	113	112	28	98	11,074	10,976	18	1	13	12	16	98	1,274	1,176	13
BMI Regional	406	-	-406	45	19,894	-	-19,894	30	-	-	0	38	-	-	0	24
British Airways	124	-	-124	45	12,213	-	-12,213	30	16	-	-16	38	1,568	-	-1,568	24
Cargojet	4	-	-4	45	-	-	0	30	-	-	0	38	-	-	0	24
CargoLogicAir	96	220	124	16	-	-	0	30	4	10	6	17	-	-	0	24
Carpatair	2	-	-2	45	200	-	-200	30	1	-	-1	38	100	-	-100	24
Cello Aviation	-	-	0	45	-	-	0	30	-	-	0	38	-	-	0	24
China Southern	156	176	20	21	-	-	0	30	6	8	2	21	-	-	0	24
Cobalt Air	-	-	0	45	-	-	0	30	-	-	0	38	-	-	0	24
Corendon Airlines Europe	7	4	-3	39	1,323	756	-567	24	2	-	-2	38	378	-	-378	24
Croatia Airlines	-	-	0	45	-	-	0	30	-	-	0	38	-	-	0	24
Danish Air Transport	2	-	-2	45	144	-	-144	30	-	-	0	38	-	-	0	24
Dubai Air Wing	1	-	-1	45	-	-	0	30	-	-	0	38	-	-	0	24
EasyJet	7,324	7,043	-281	2	1,186,803	1,175,898	-10,905	2	376	358	-18	2	60,816	59,808	-1,308	2
EasyJet Europe	-	2	2	41	-	372	372	26	-	-	0	38	-	-	0	24
Egypt Air	16	132	116	25	-	-	0	30	-	6	6	26	-	-	0	24
Emirates	316	616	300	8	111,600	218,064	106,464	5	14	28	14	9	4,956	9,912	4,956	5
Enter Air	10	7	-3	38	1,890	1,323	-567	23	1	1	0	37	189	189	0	22
Ethihad Airways	62	-	-62	45	-	-	0	30	-	-	0	38	-	-	0	24
European Air Transport (DHL)	461	401	-60	12	-	-	0	30	22	18	-4	12	-	-	0	24
Eurowings	1,296	18	-1,278	37	221,796	3,240	-218,556	21	60	4	-56	29	10,284	720	-9,564	18
Evelop Airlines	1	-	-1	45	388	-	-388	30	-	-	0	38	-	-	0	24
Everjets	4	-	-4	45	720	-	-720	30	-	-	0	38	-	-	0	24
Federal Express	1,717	1,972	255	4	-	-	0	30	79	90	11	4	-	-	0	24
FlyBosnia	-	130	130	26	-	17,940	17,940	14	-	6	6	26	-	828	828	14
Helvetic Airways	3	-	-3	45	300	-	-300	30	1	-	-1	38	100	-	-100	24
Inflite	1	-	-1	45	12	-	-12	30	-	-	0	38	-	-	0	24
Israir	-	-	0	45	-	-	0	30	-	-	0	38	-	-	0	24
Jet Time Airways	2	-	-2	45	296	-	-296	30	-	-	0	38	-	-	0	24
Jet2.com	2,191	2,709	518	3	414,519	512,783	98,264	3	117	140	23	3	22,113	26,460	4,347	3
Jota Aviation	1	-	-1	45	95	-	-95	30	-	-	0	38	-	-	0	24
Lauda Motion	658	596	-62	9	128,864	107,280	-21,584	6	32	28	-4	9	6,322	5,040	-1,282	6
Loganair	588	468	-120	11	21,292	15,444	-5,848	15	22	22	0	11	726	726	0	17
Lufthansa	8	-	-8	45	1,147	-	-1,147	30	3	-	-3	38	585	-	-585	24
Luxair	-	1	1	44	-	141	141	28	-	-	0	38	-	-	0	24
Maleth-Aero	5	-	-5	45	476	-	-476	30	-	-	0	38	-	-	0	24
Martinair	46	44	-2	31	-	-	0	30	2	2	0	32	-	-	0	24
National Air Cargo	1	-	-1	45	-	-	0	30	-	-	0	38	-	-	0	24
Pegasus Airlines	1,137	1,268	131	5	214,893	239,652	24,759	4	64	58	-6	5	12,096	10,962	-1,134	4
Peoples Viennaline	-	32	32	33	-	2,432	2,432	22	-	2	2	32	-	152	152	23
Pobeda Airlines LLC	142	-	-142	45	26,838	-	-26,838	30	8	-	-8	38	1,512	-	-1,512	24
Primera Air	-	-	0	45	-	-	0	30	-	-	0	38	-	-	0	24
Qatar Airways	209	220	11	16	-	-	0	30	6	10	4	17	-	-	0	24
Royal Air Maroc	-	44	44	31	-	-	0	30	-	2	2	32	-	-	0	24
Royal Jordanian	2	-	-2	45	540	-	-540	30	-	-	0	38	-	-	0	24
Ryanair	49,321	47,067	-2,254	1	9,321,669	8,899,439	-422,230	1	2,248	2,179	-69	1	424,872	412,015	-12,857	1
SAS Scandinavian	-	302	302	15	-	54,336	54,336	9	-	14	14	14	-	2,520	2,520	9
Silk Way West Airlines	8	-	-8	45	-	-	0	30	-	-	0	38	-	-	0	24
Sky Taxi	11	-	-11	45	-	-	0	30	1	-	-1	38	-	-	0	24
SprintAir	3	-	-3	45	-	-	0	30	-	-	0	38	-	-	0	24
Star Air	14	-	-14	45	-	-	0	30	-	-	0	38	-	-	0	24
SUN-AIR	-	2	2	41	-	64	64	29	-	-	0	38	-	-	0	24
Sundair	3	-	-3	45	534	-	-534	30	-	-	0	38	-	-	0	24
Swiftair	1	-	-1	45	-	-	0	30	-	-	0	38	-	-	0	24
TAP Air Portugal	1	-	-1	45	263	-	-263	30	-	-	0	38	-	-	0	24
Thomas Cook (UK)	28	29	1	34	5,720	5,860	140	19	-	-	0	38	-	-	0	24
Titan Airways	560	576	16	10	26,994	22,433	-4,561	11	32	33	1	7	2,561	1,632	-929	11
Trade Air	2	-	-2	45	218	-	-218	30	-	-	0	38	-	-	0	24
Transavia	3	-	-3	45	527	-	-527	30	-	-	0	38	-	-	0	24
Travel Service	-	0	0	45	-	-	0	30	-	-	0	38	-	-	0	24
TUI Airways	373	316	-57	13	71,666	59,835	-11,831	8	18	16	-2	13	3,402	3,024	-378	7
TUIfly	1	-	-1	45	189	-	-189	30	-	-	0	38	-	-	0	24
Tunisair	1	-	-1	45	200	-	-200	30	-	-	0	38	-	-	0	24
Turkish Airlines	135	176	41	21	178	-	-178	30	6	8	2	21	-	-	0	24
Ukraine Air Alliance	2	-	-2	45	-	-	0	30	-	-	0	38	-	-	0	24
UPS Airlines	588	792	204	16	-	-	0	30	28	36	8	6	-	-	0	24
Ural Airlines	-	114	114	27	-	18,240	18,240	13	-	8	8	21	-	1,280	1,280	12
Uzbekistan Airways	5	-	-5	45	-	-	0	30	1	-	-1	38	-	-	0	24
Volga-Dnepr Airlines	1	-	-1	45	-	-	0	30	-	-	0	38	-	-	0	24
Volotea Airlines	-	3	3	40	-	468	468	25	-	2	2	32	-	312	312	20
Vueling	2	-	-2	45	360	-	-360	30	1	-	-1	38	180	-	-180	24
West Atlantic Cargo	631	630	-1	7	-	-	0	30	29	30	1	8	-	-	0	24
Wideroe	172	188	16	19	13,416	14,664	1,248	16	8	10	2	17	624	780	156	15
WOW Air	2	-	-2	45	400	-	-400	30	-	-	0	38	-	-	0	24
<b>TOTAL</b>	<b>70,043</b>	<b>67,660</b>	<b>-2,383</b>		<b>11,939,465</b>	<b>11,519,498</b>	<b>-419,967</b>		<b>3,263</b>	<b>3,198</b>	<b>-65</b>		<b>559,326</b>	<b>543,622</b>	<b>-15,704</b>	

Operators with 0 'ATMs' in both W18 End & W19 Start schedules are included in the table due to appearing in the W18 Start schedule (either with/without allocated slots).

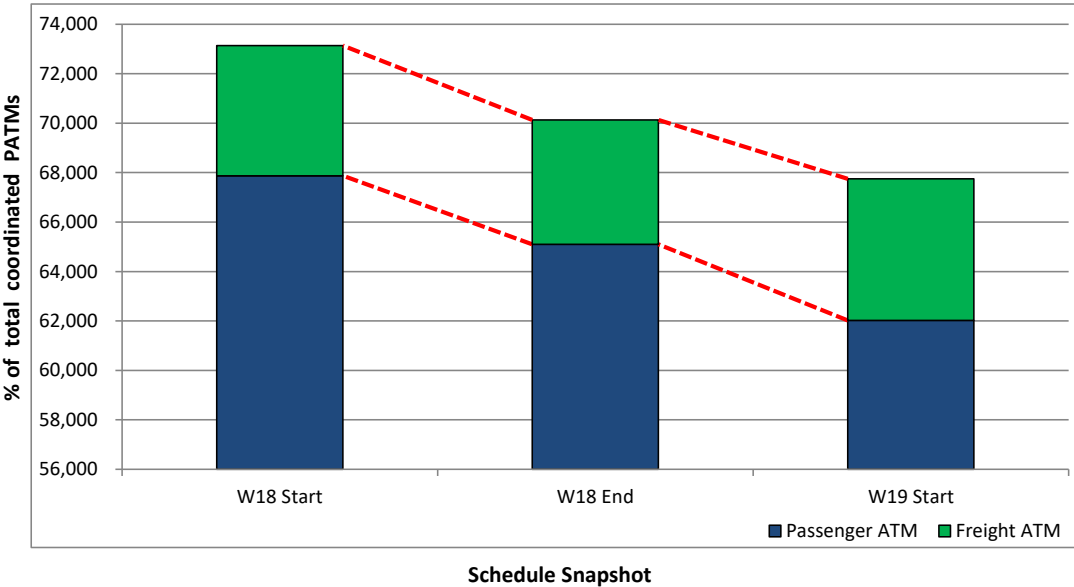
## Significant Route Changes

Operator	Category	Description of change from W18 schedule to W19 schedule
Albawings	<b>NEW</b>	New flight to Tirana
BA Cityflyer	<b>NEW</b>	New flights to Chambery, Berlin and Salzburg
CargoLogicAir	CHANGE	Reduction of 65 flights to Frankfurt
EasyJet	<b>NEW</b>	New flights to Charles De Gaulle,
EasyJet	<b>CANCELLED</b>	Cancelled flight to KEF
Emirates	CHANGE	Increase of 302 flights to DXB
Eurowings	<b>CANCELLED</b>	Cancelled flights to Munich, Cologne and Hanover
Federal Express	<b>NEW</b>	New flights to Hong Kong, Seoul and Newark
Jet2.com	<b>NEW</b>	New flights to Enontokio, Malta and Innsbruck
Jet2.com	CHANGE	Increase of flights to Geneva, Tenerife, Lanzarote and Antalya
Loganair	<b>CANCELLED</b>	Cancelled flight to Londondery
Pegasus Airlines	CHANGE	Increase of 152 flights to Sabhia Gokcen
Ryanair	<b>NEW</b>	New flights to Dresden, Ibiza, Essaouria and Venice Marco Polo
Ryanair	<b>CANCELLED</b>	Cancelled flights to Edinburgh, Leipzig, Frankfurt Hahn and Lublin
TUI Airways	<b>NEW</b>	New flights to Chambery
UPS Airlines	<b>NEW</b>	New flights to Charles De Gaulle and Hong Kong
UPS Airlines	<b>CANCELLED</b>	Canceled flight to Newark

# Full Season - ATM Analysis



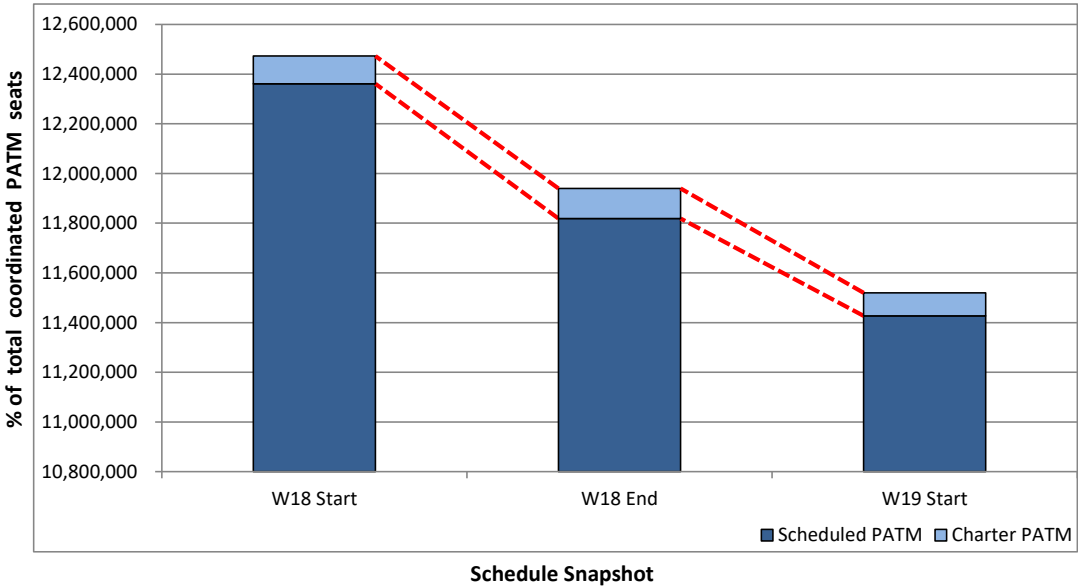
## Total ATMs: Passenger ATMs vs. Freight ATMs



# Full Season - PATM Seats Analysis



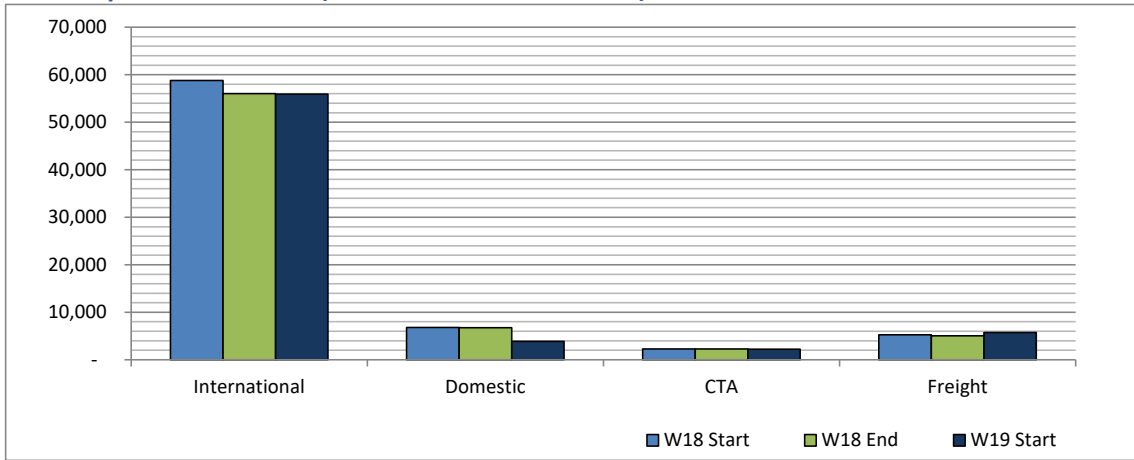
Total Passenger ATM seats: Scheduled vs. Charter



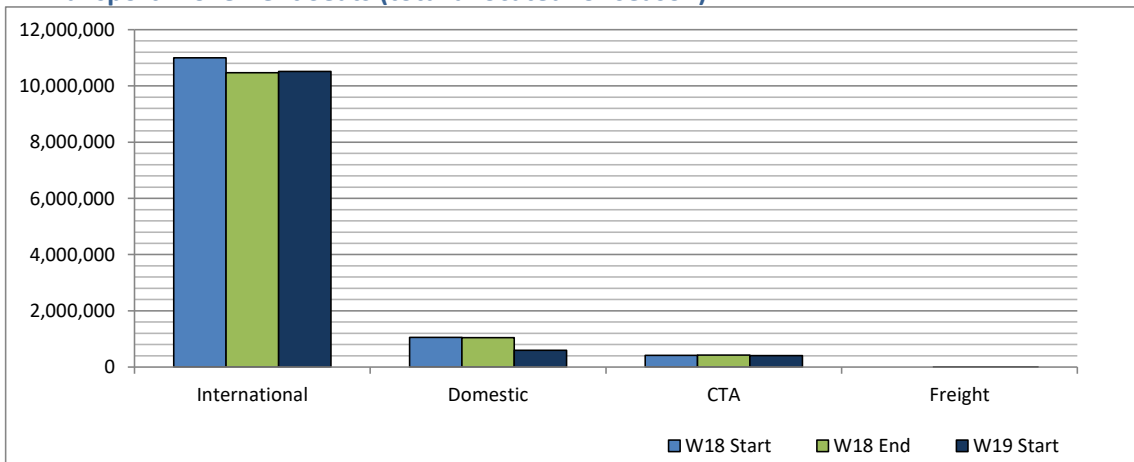
# Full Season - Terminal Analysis



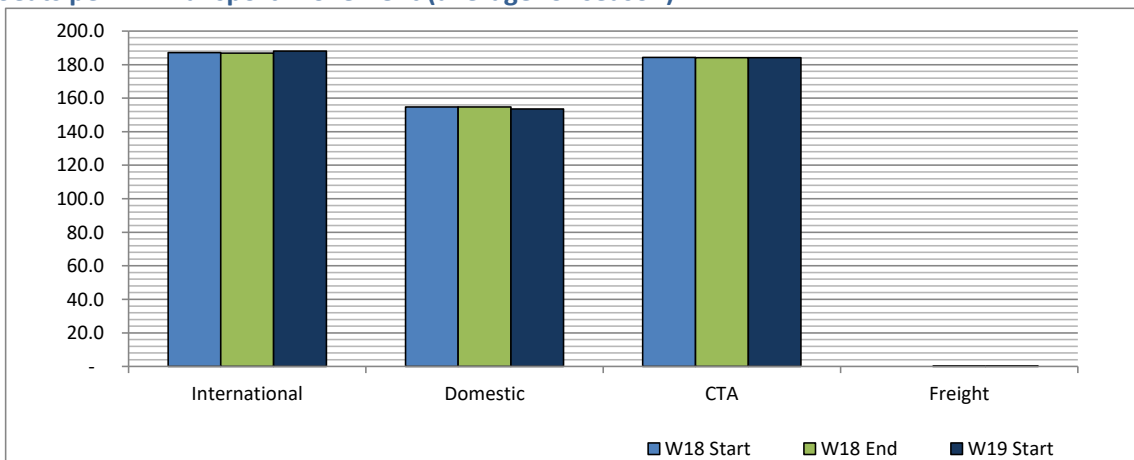
## Air Transport Movements (total allocated for season)



## Air Transport Movement Seats (total allocated for season)



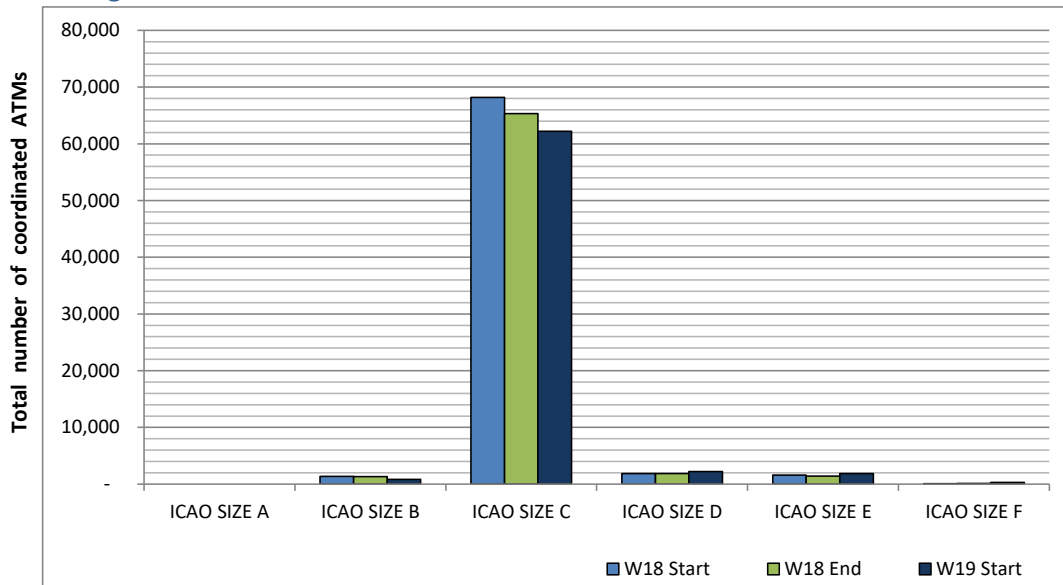
## Seats per Air Transport Movement (average for season)



# Full Season - Aircraft Size Analysis

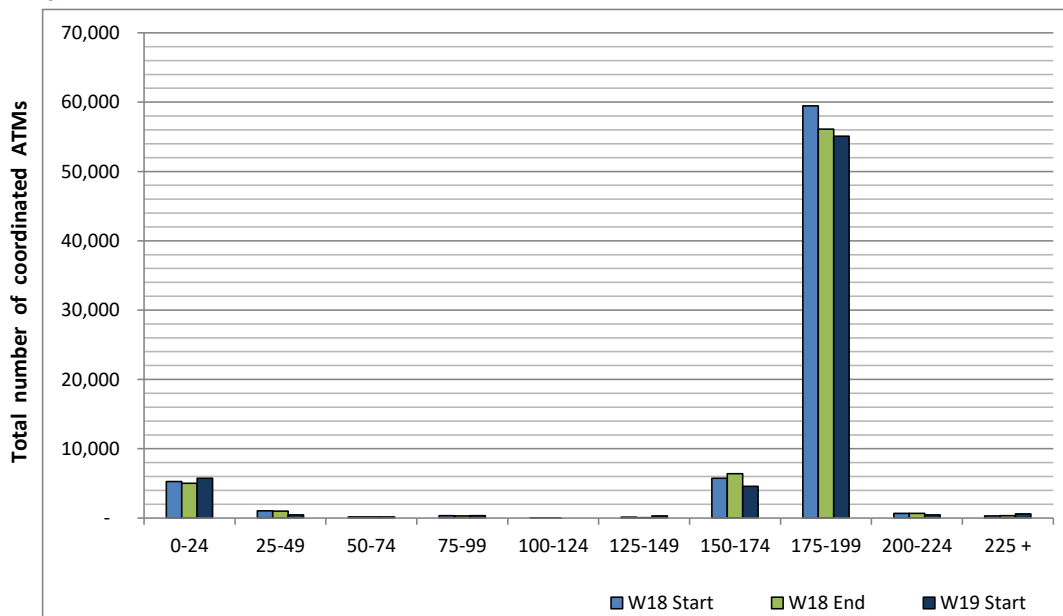


## ICAO size designation



Note: See Glossary for definitions of ICAO SIZE groupings

## Air Transport Movement seat distribution



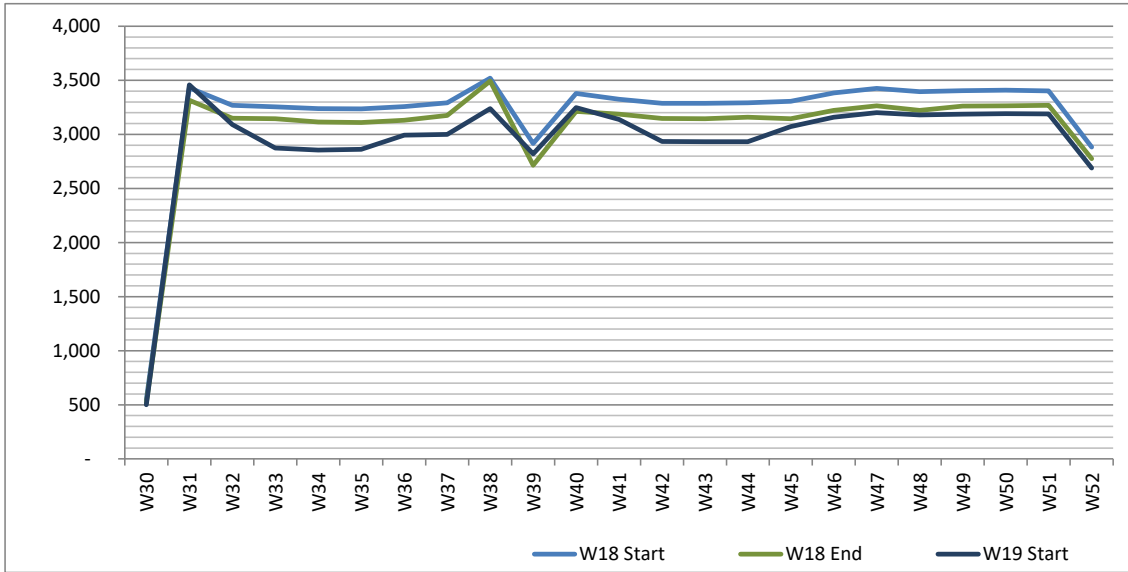
Note: FREIGHT-ONLY services with 0 seats are included in the first seat band '0-24'



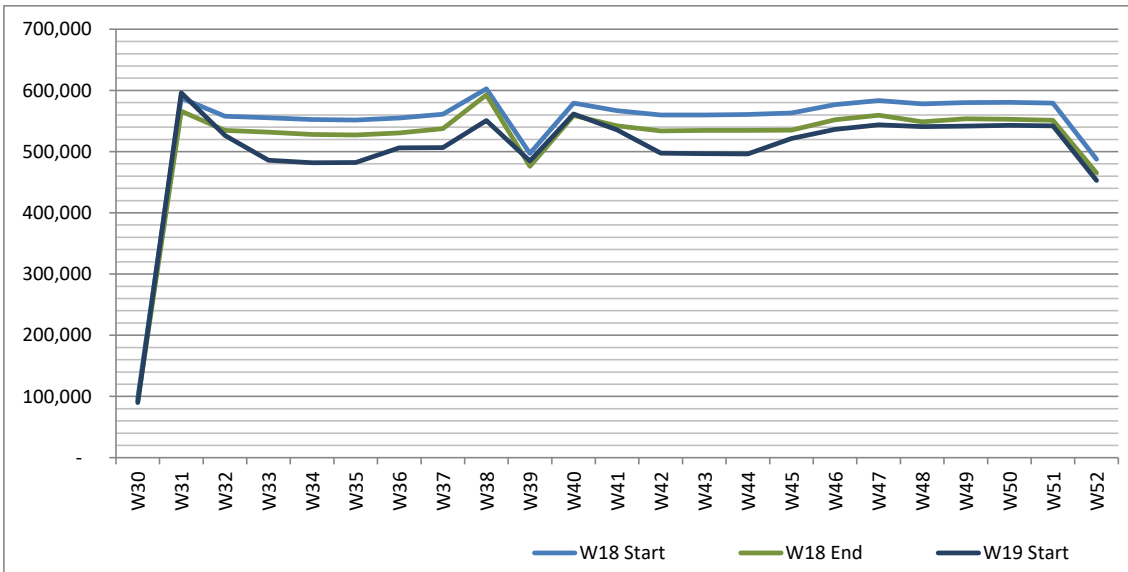
# Full Season - Seasonality



Air Transport Movements by week of season



Air Transport Movement Seats by week of season



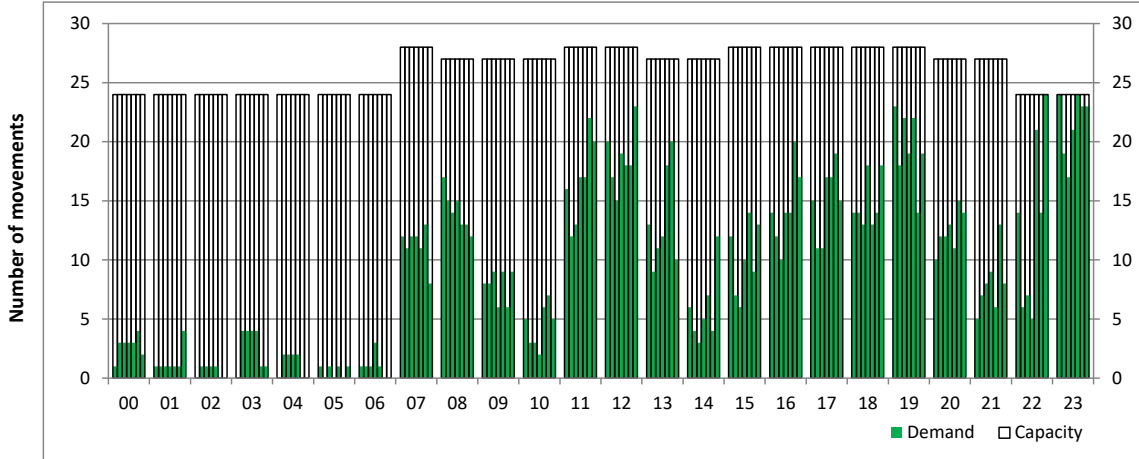
# Peak Week - Hourly Runway Demand

Schedule: W19 Start



## Hourly Arrival Demand

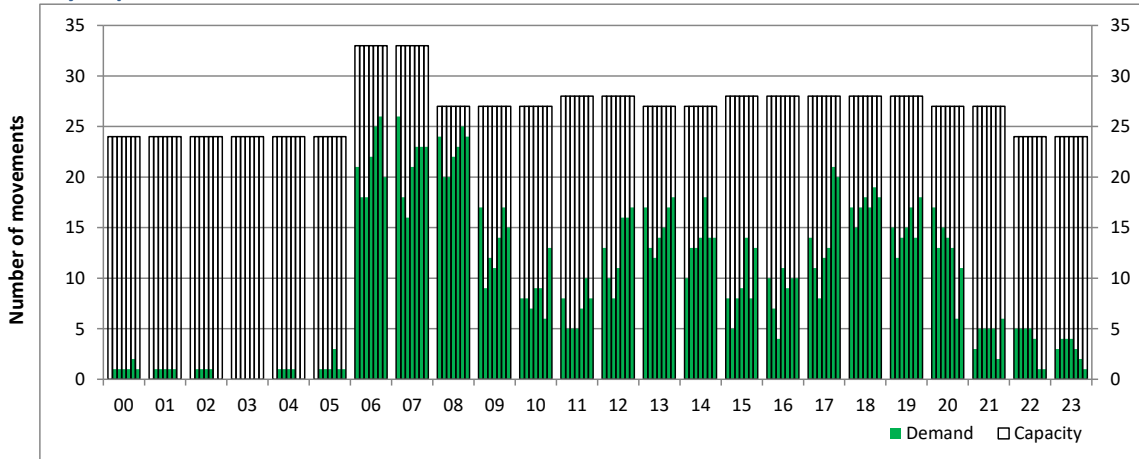
Time: UTC



Hour of day (24 hour format)

## Hourly Departure Demand

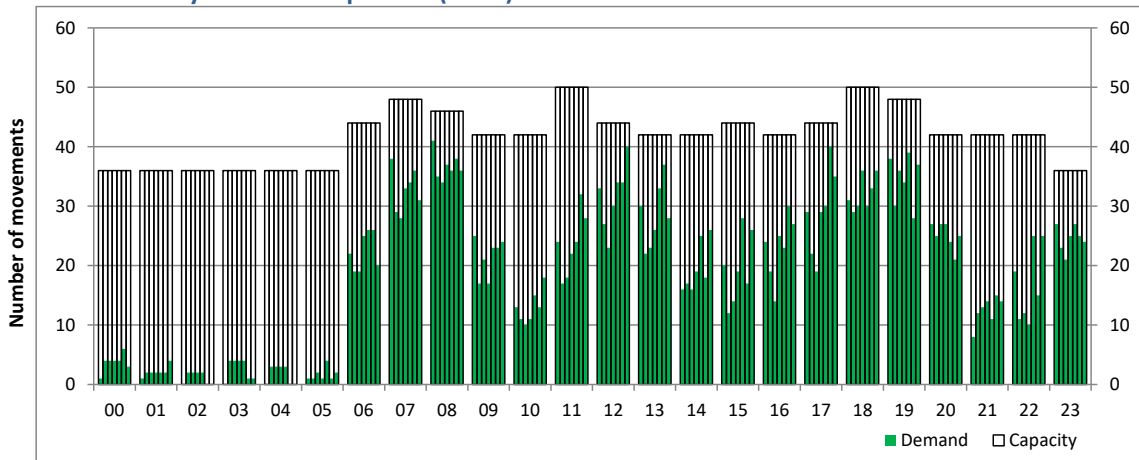
Time: UTC



Hour of day (24 hour format)

## Combined Hourly Arrival & Departure (Total) Demand

Time: UTC



Hour of day (24 hour format)

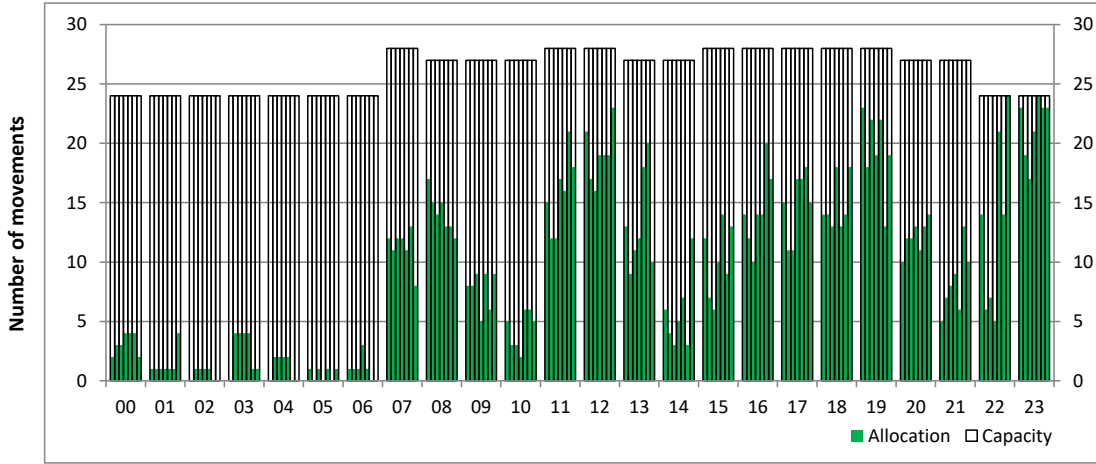
# Peak Week - Hourly Runway Allocation

Schedule: W19 Start



## Hourly Arrival Allocation

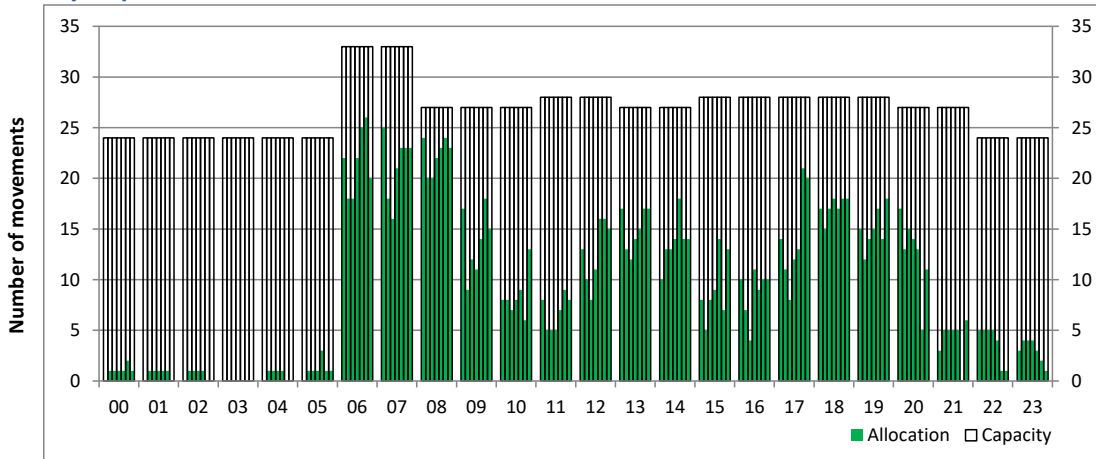
Time: UTC



Hour of day (24 hour format)

## Hourly Departure Allocation

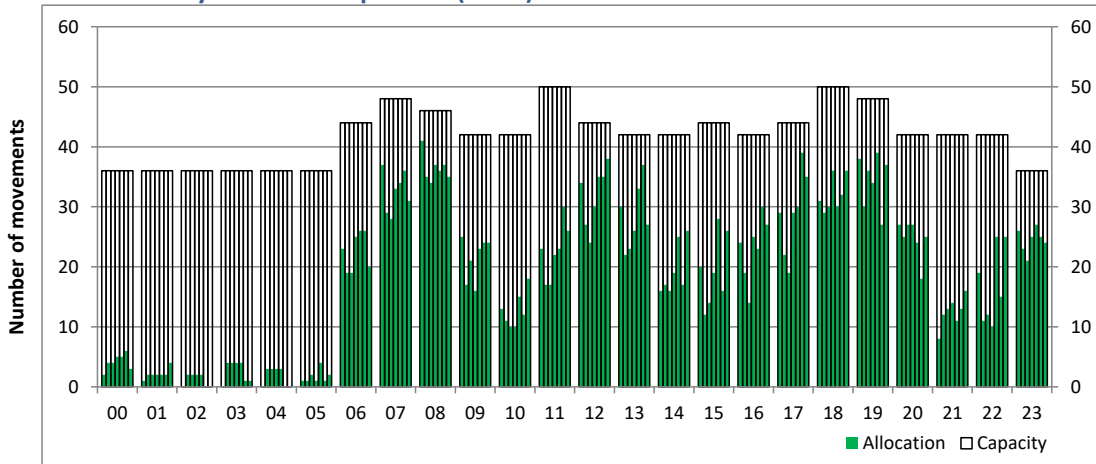
Time: UTC



Hour of day (24 hour format)

## Combined Hourly Arrival & Departure (Total) Allocation

Time: UTC



Hour of day (24 hour format)

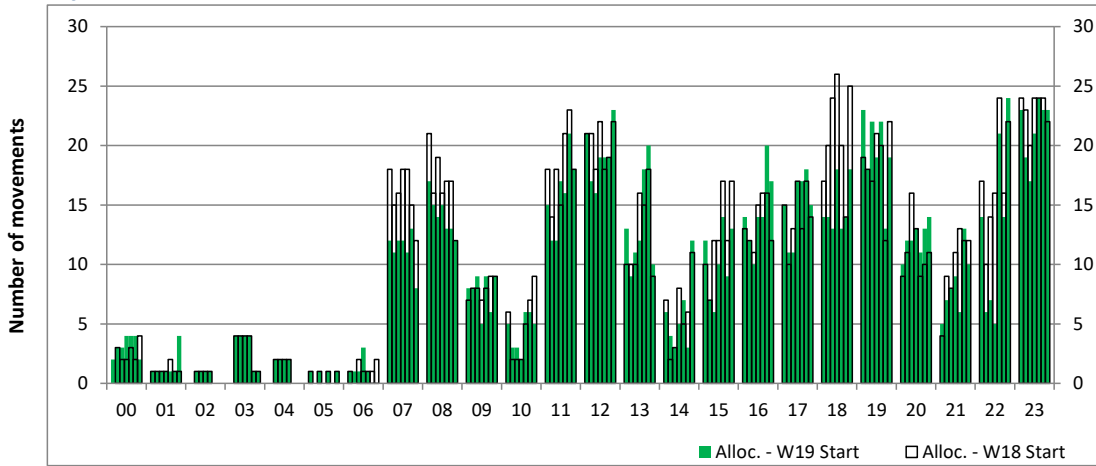
# Peak Week - Runway Allocation Comparison

Comparison of W19 Start vs. W18 Start



## Hourly Arrival Allocation

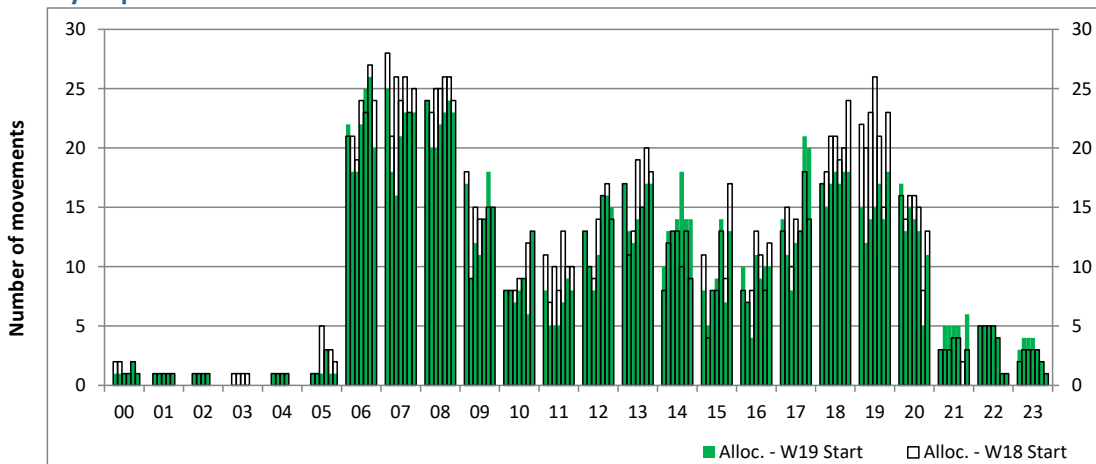
Time: UTC



Hour of day (24 hour format)

## Hourly Departure Allocation

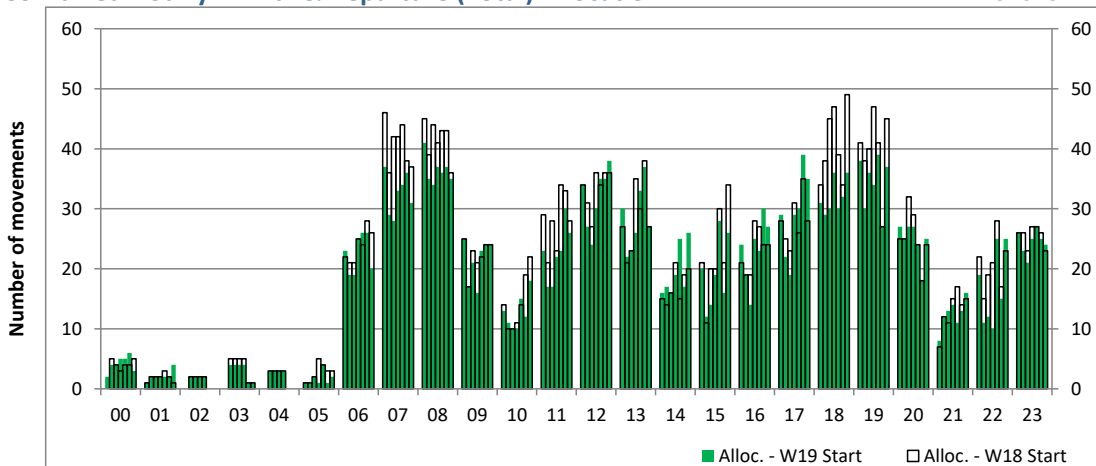
Time: UTC



Hour of day (24 hour format)

## Combined Hourly Arrival & Departure (Total) Allocation

Time: UTC



Hour of day (24 hour format)

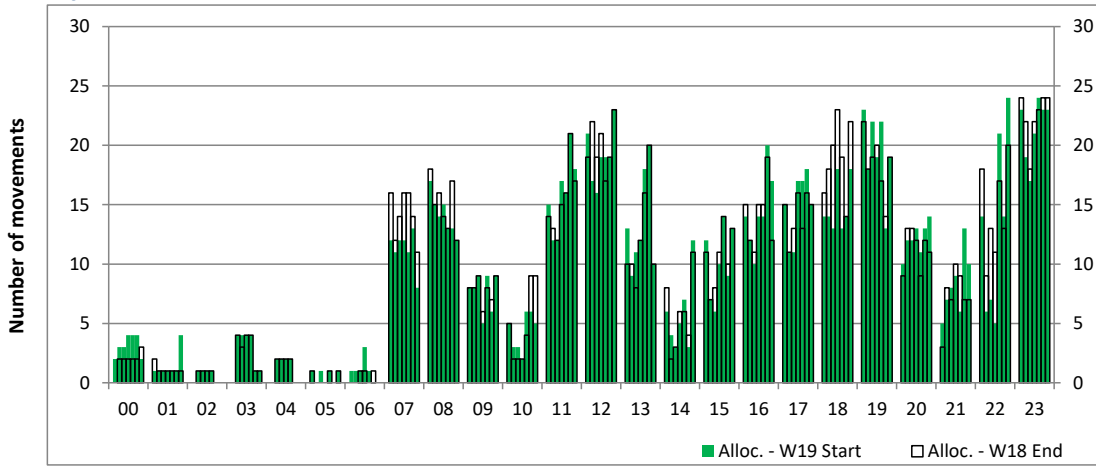
# Peak Week - Runway Allocation Comparison

Comparison of W19 Start vs. W18 End



## Hourly Arrival Allocation

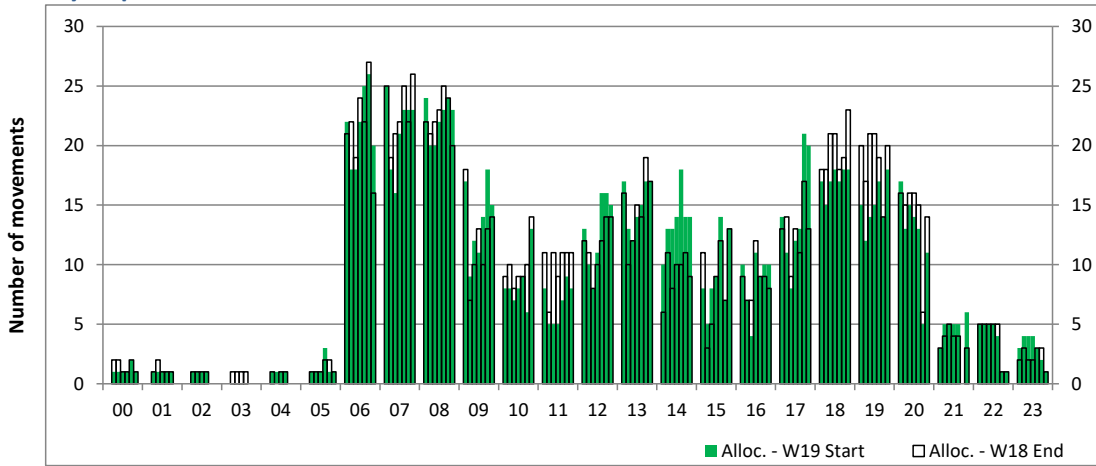
Time: UTC



Hour of day (24 hour format)

## Hourly Departure Allocation

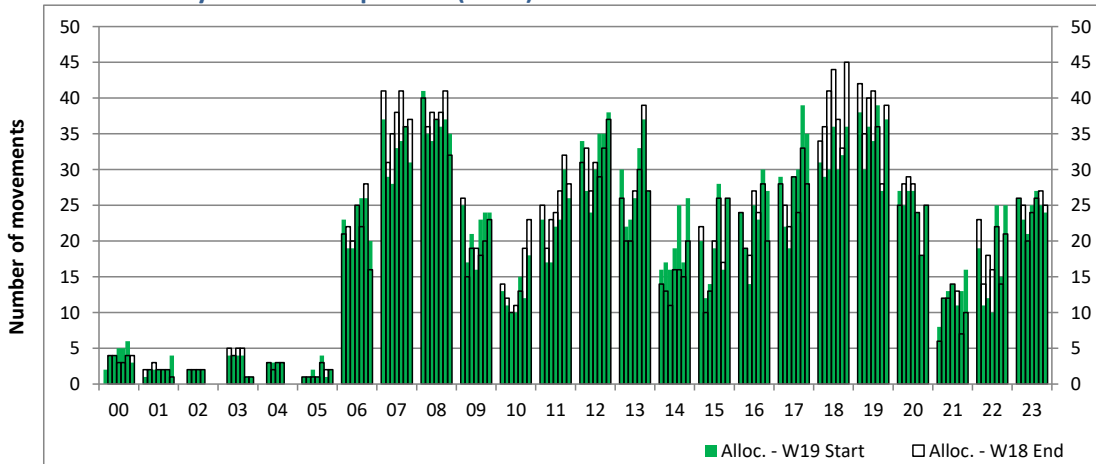
Time: UTC



Hour of day (24 hour format)

## Combined Hourly Arrival & Departure (Total) Allocation

Time: UTC



Hour of day (24 hour format)

# Peak Week - Passengers Histogram

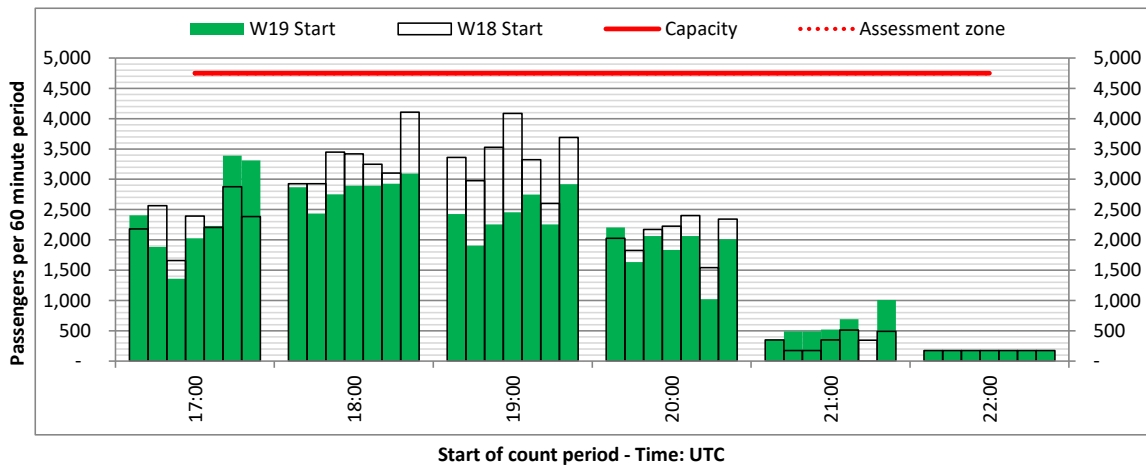
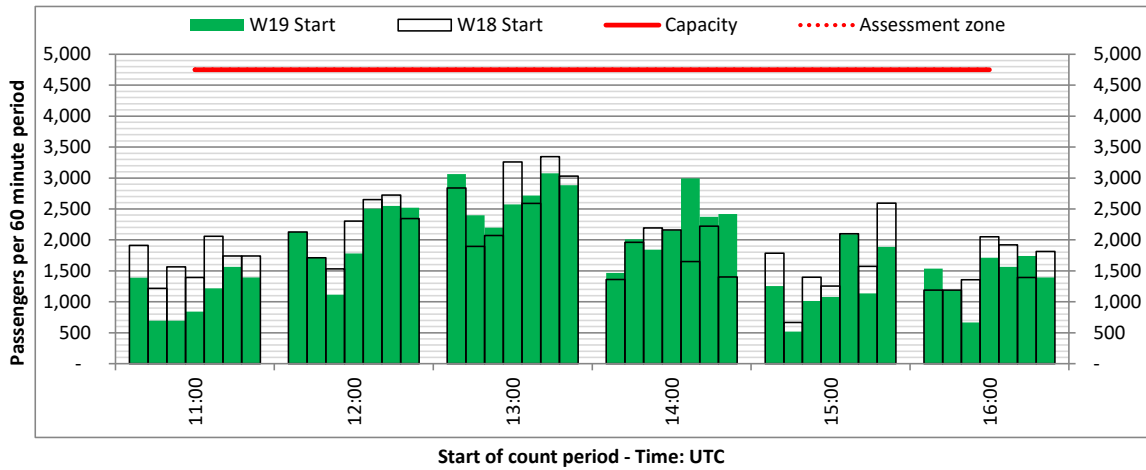
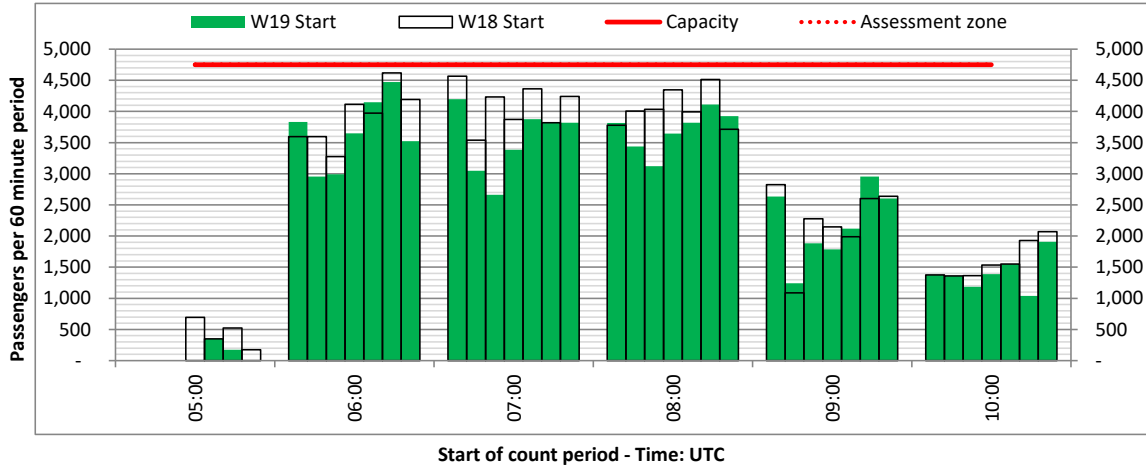
DEPARTURE - 60 minute count rolling every 60 mins (T60)



Terminals: All Terminals

Operators: All Operators

Days: 1234567



# Peak Week - Passengers Histogram

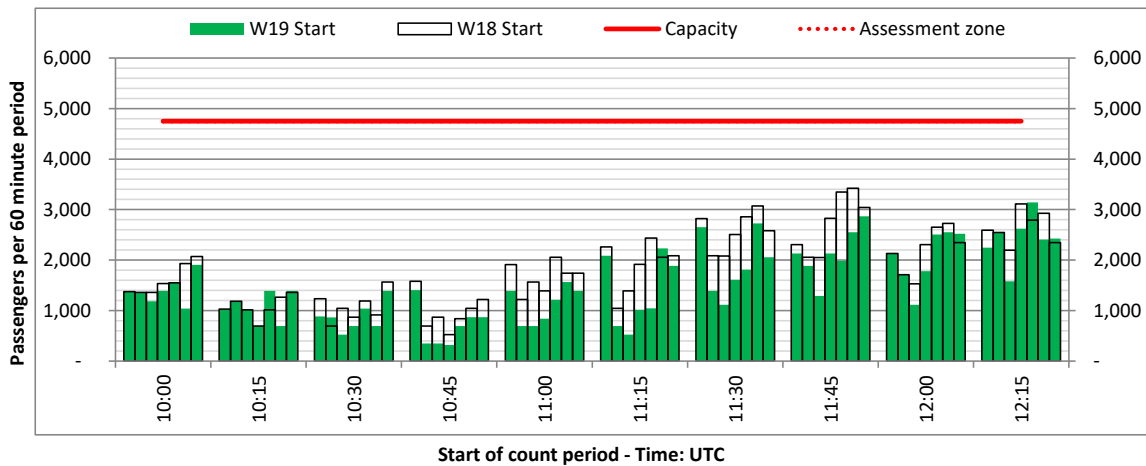
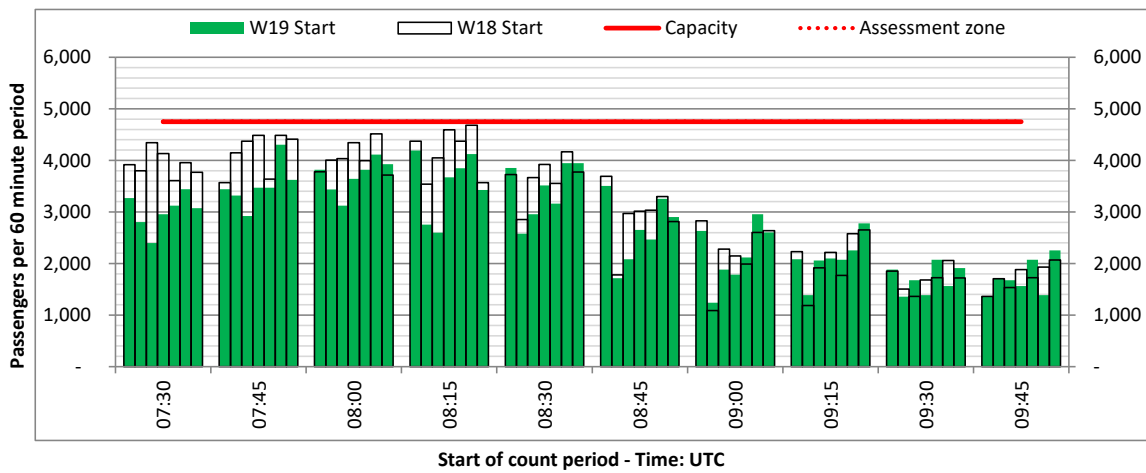
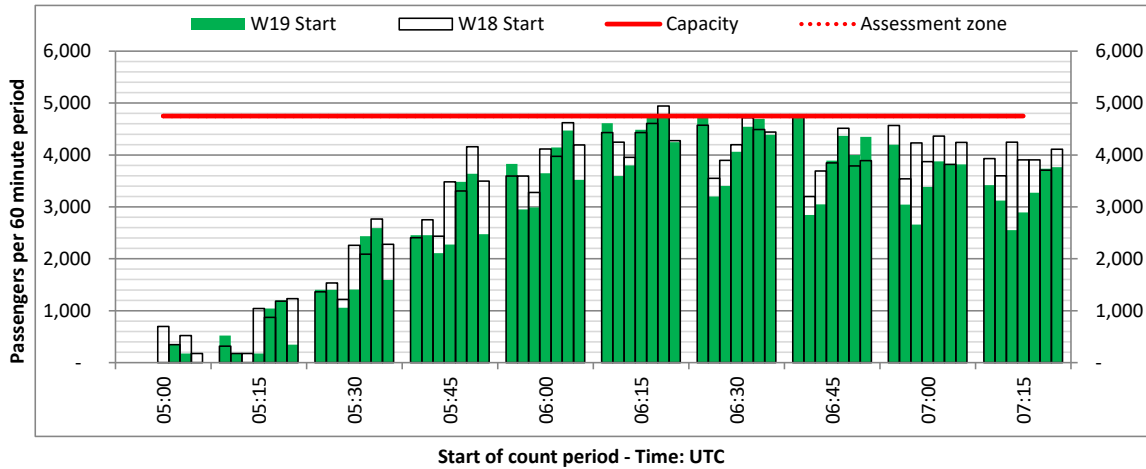
DEPARTURE - 60 minute count rolling every 15 mins (T60/15)



Terminals: All Terminals

Operators: All Operators

Days: 1234567



# Peak Week - Passengers Histogram

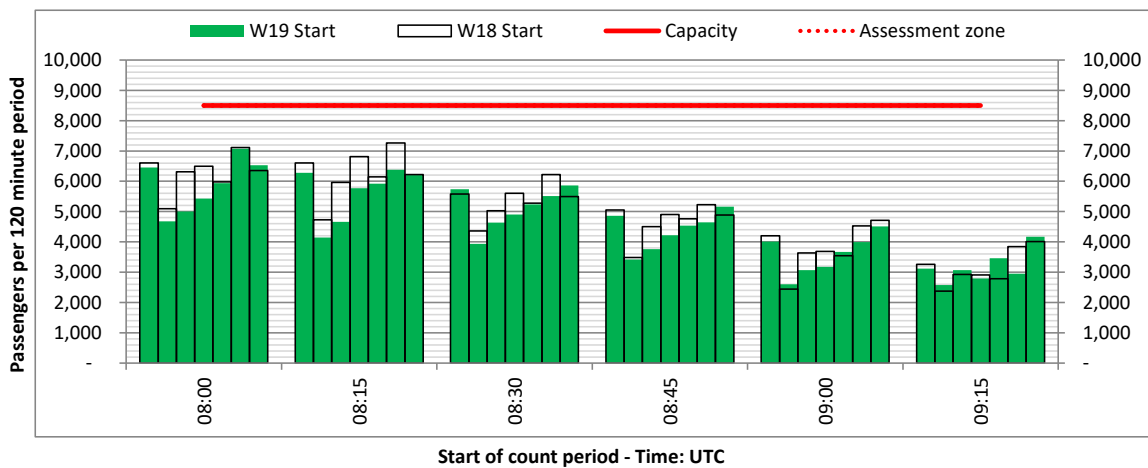
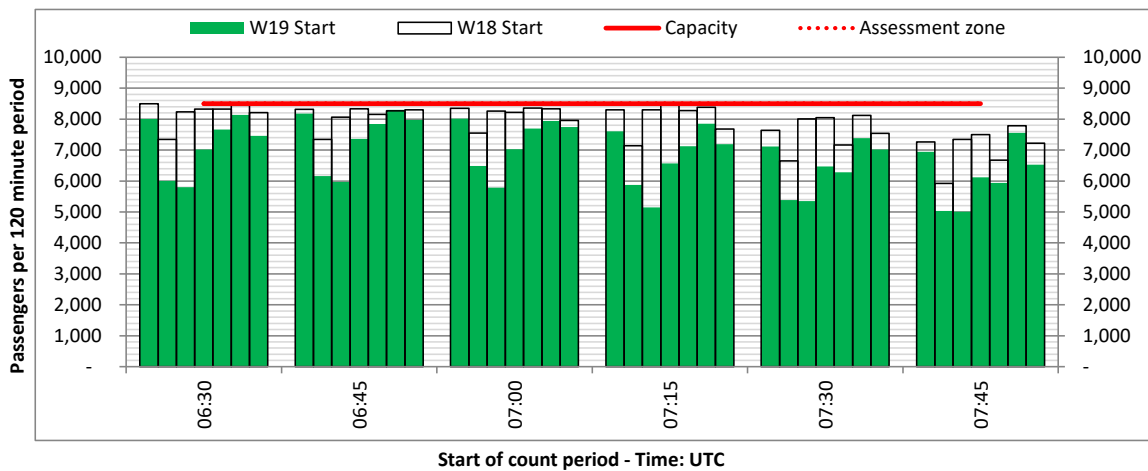
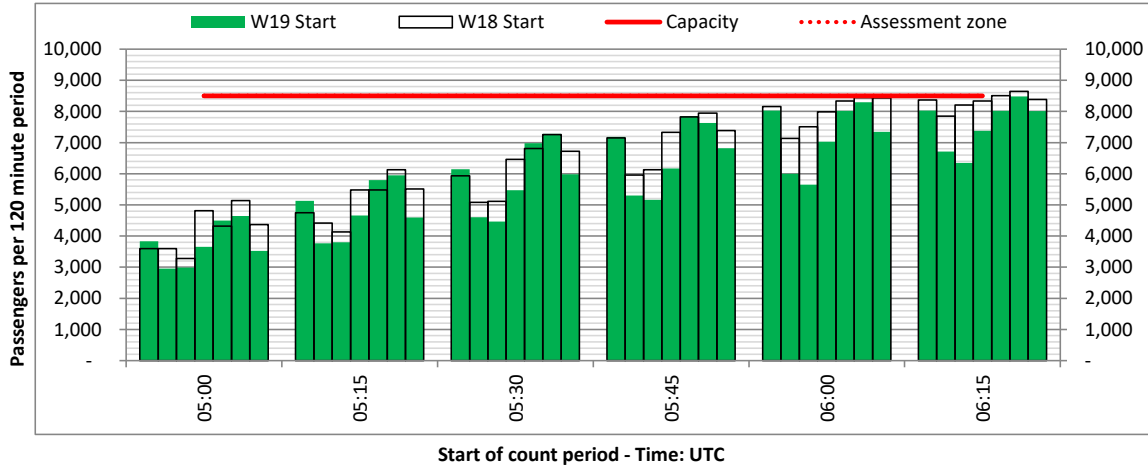
DEPARTURE - 120 minute count rolling every 15 mins (T120/15)



Terminals: All Terminals

Operators: All Operators

Days: 1234567





# Peak Week - Passengers Histogram

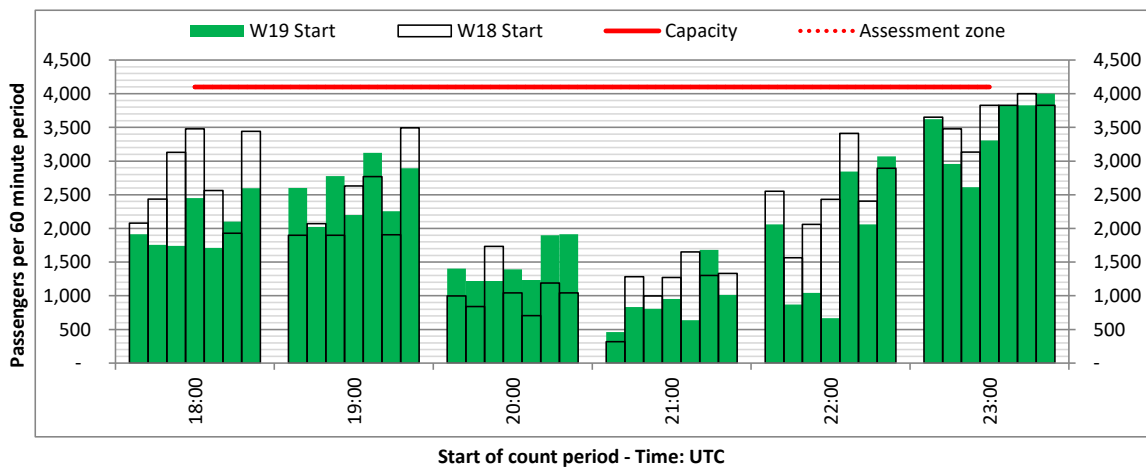
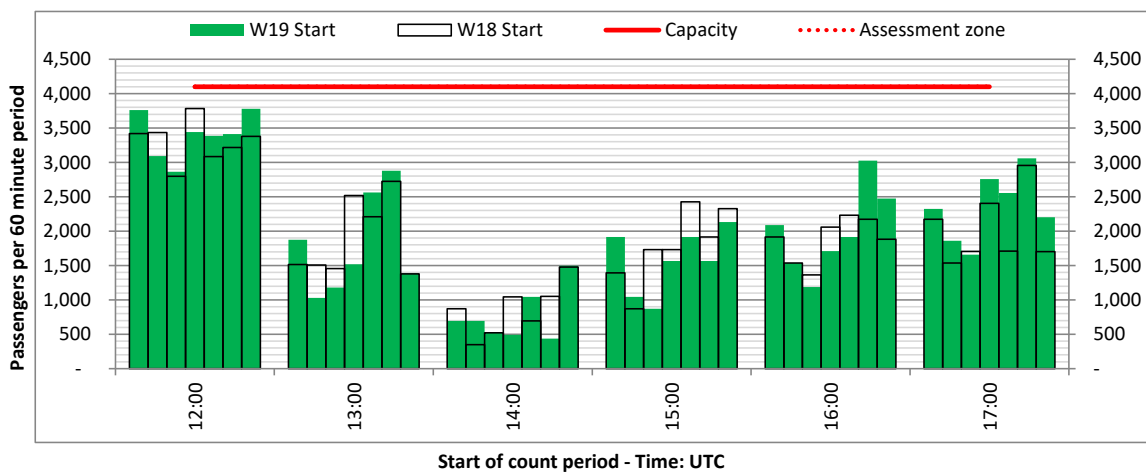
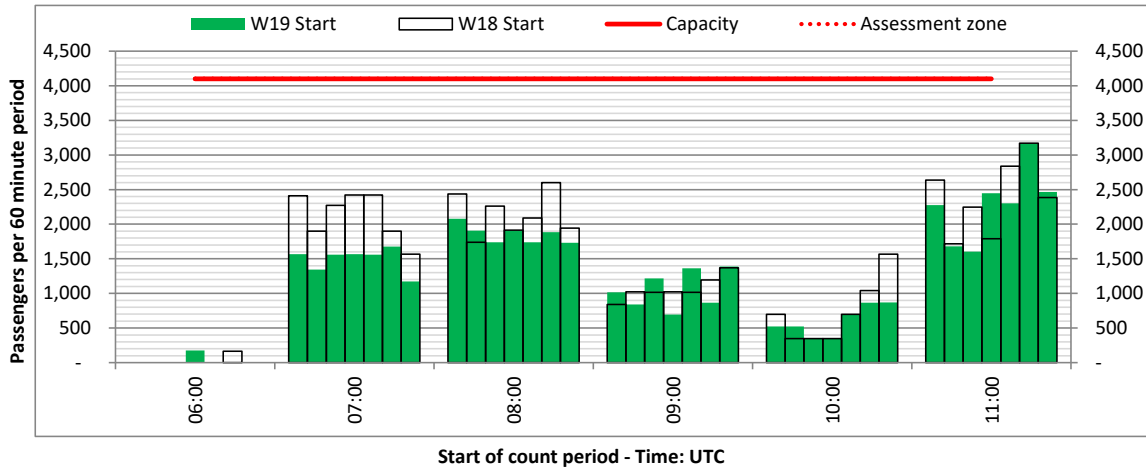
ARRIVAL - 60 minute count rolling every 60 mins (T60)



Terminals: 11

Operators: All Operators

Days: 1234567



# Peak Week - Passengers Histogram

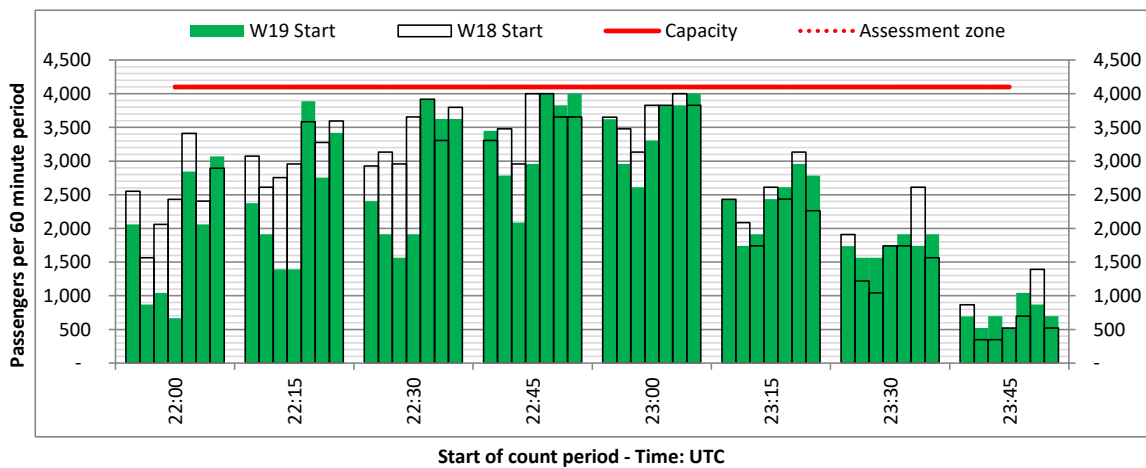
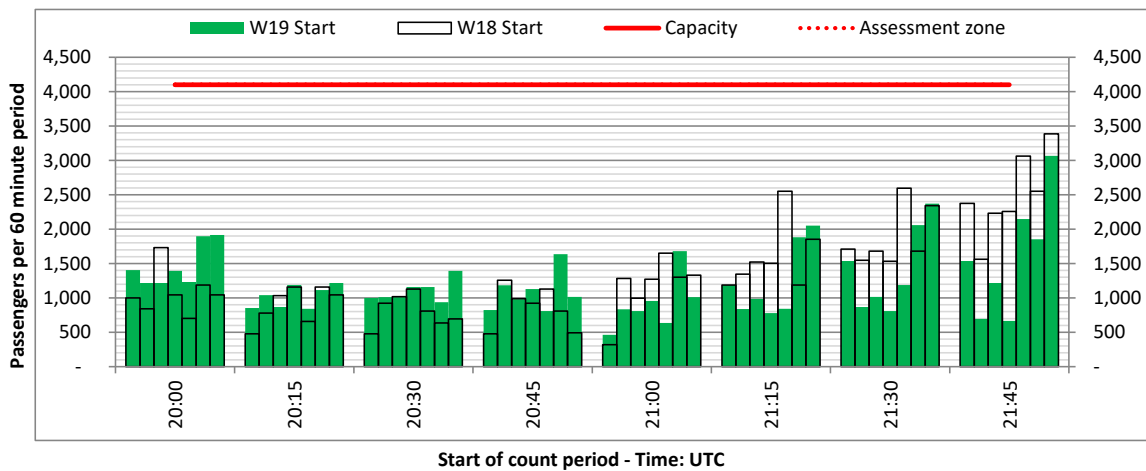
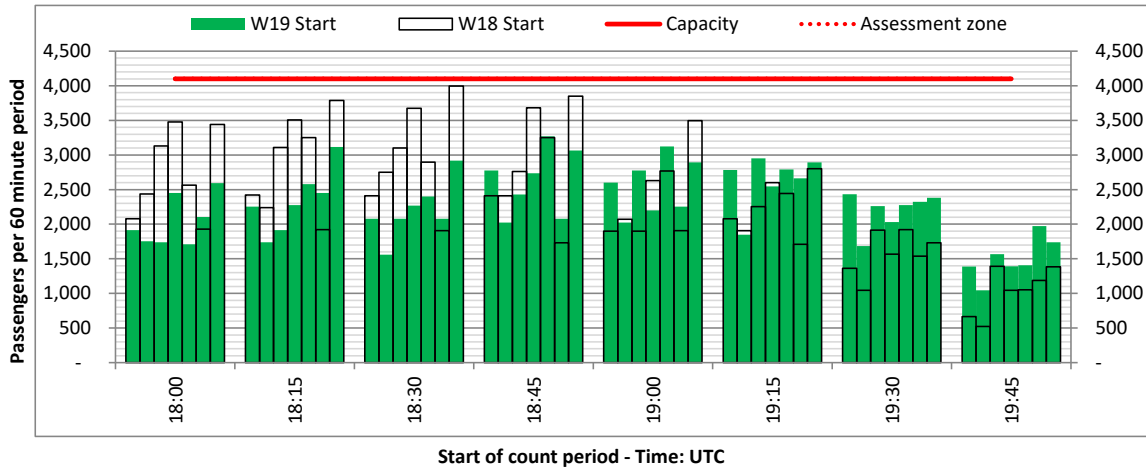
ARRIVAL - 60 minute count rolling every 15 mins (T60/15)



Terminals: 11

Operators: All Operators

Days: 1234567



# Glossary



<b>Air Transport Movement (ATM)</b>	Any aircraft movement which is either a scheduled or chartered passenger or cargo flight.
<b>Common Travel Area (CTA)</b>	Origin or Destination is in Republic of Ireland or the Channel Islands.
<b>Demand</b>	Unconstrained demand before any schedule adjustments have been made.
<b>"Fill-in"</b>	These are gaps in a historic series of slots which the carrier requests to "Fill-in" at Initial Submissions - Fill-ins will be recognisably part of the historic series and will have the same flight details to qualify as a "Fill-in".
<b>Hist (SHL)</b>	Snapshot of historic schedule rolled over from end of the previous equivalent season - as advised to airlines in the SHLs.
<b>ICAO Size A</b>	Aircraft with wingspan between 0.00m - 14.99m.
<b>ICAO Size B</b>	Aircraft with wingspan between 15.00m - 23.99m.
<b>ICAO Size C</b>	Aircraft with wingspan between 24.00m - 35.99m.
<b>ICAO Size D</b>	Aircraft with wingspan between 36.00m - 51.99m.
<b>ICAO Size E</b>	Aircraft with wingspan between 52.00m - 64.99m.
<b>ICAO Size F</b>	Aircraft with wingspan between 65.00m - 80.00m.
<b>Init Coord</b>	Snapshot of schedule immediately after Initial Coordination is completed - as advised to airlines in the SALs.
<b>Passenger Air Transport Movement (PATM)</b>	Any aircraft movement which is either a scheduled or chartered passenger flight.
<b>Start</b>	Snapshot of schedule shortly before the start of the scheduling season (exact date given below where used).
<b>Time: Local</b>	Times shown are in LOCAL time for the airport/scheduling season.
<b>Time: UTC</b>	Times shown are in Universal Time Constant (UTC).

---

## Data snapshot descriptions

<b>W18 Start</b>	W18 schedule as cleared on Thu 27-Sep-18.
<b>W18 End</b>	W18 schedule as cleared on Tue 10-Sep-19.
<b>W19 Start</b>	W19 schedule as cleared on Tue 10-Sep-19.
<b>Peak Week</b>	Peak week for W18 is Mon 17-Dec-18 to Sun 23-Dec-18. Peak week for W19 is Mon 17-Feb-20 to Sun 23-Feb-20.

---

## For ACL use

	Airport-Season-Branch-Resource	From date	To date	Time
Full Season Rep 1	STN-W18-SOS Report-Standard	Sun 28-Oct-2018	Sat 30-Mar-2019	UTC
Full Season Rep 2	STN-W18-End-Standard	Sun 28-Oct-2018	Sat 30-Mar-2019	UTC
Full Season Rep 3	STN-W19-SOS Report-Standard	Sun 27-Oct-2019	Sat 28-Mar-2020	UTC
	Airport-Season-Branch-Resource	From date	To date	Time
Peak Week Rep 1	STN-W18-SOS Report-Standard	Mon 17-Dec-2018	Sun 23-Dec-2018	UTC
Peak Week Rep 2	STN-W18-End-Standard	Mon 18-Feb-2019	Sun 24-Feb-2019	UTC
Peak Week Rep 3	STN-W19-SOS Report-Standard	Mon 17-Feb-2020	Sun 23-Feb-2020	UTC