

AUCKLAND INTERNATIONAL AIRPORT AKL

W19 Start of Season Report (International Traffic)

Key Statistics	W18 Operated	W19 -Start of Season	Percentage Change
Air Transport Movements	25,347	25,290	▲ -0.2%
Total Seats	6,431,500	6,357,336	▲ -1.2%
Seats per Passenger ATM	254	251	

Contents

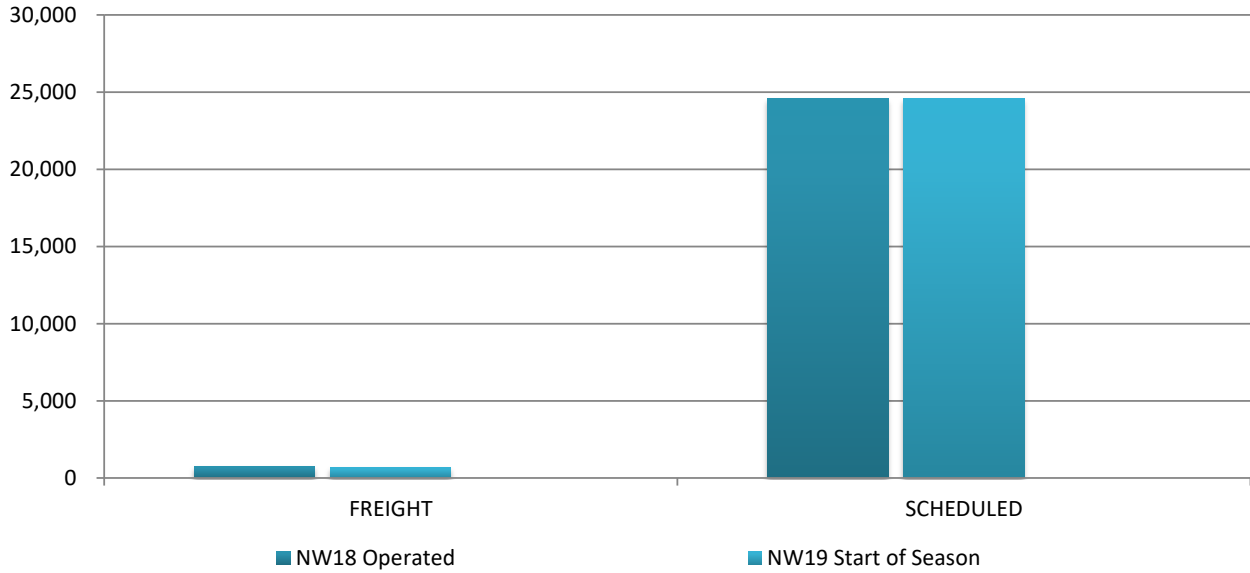
	Page
Movements and Seats by Service Type	2
Week Departure Frequencies by Carrier	3-6
Top 10 Airlines by ATM's and Seats	7
Top 20 Destinations by ATM's and Seats	8
International Terminal - Passengers per 60 Minutes	9-10
International Arrivals - Passengers per 30 Minutes	11
Glossary	12

Data in this report is current as of 11 October 2019

No warranty whether expressed or implied as to the completeness, accuracy, fitness for purpose, or satisfactory quality is given by ACL regarding the information in this report, which is provided by third parties. Accordingly, ACL excludes all liability with regard to such data.

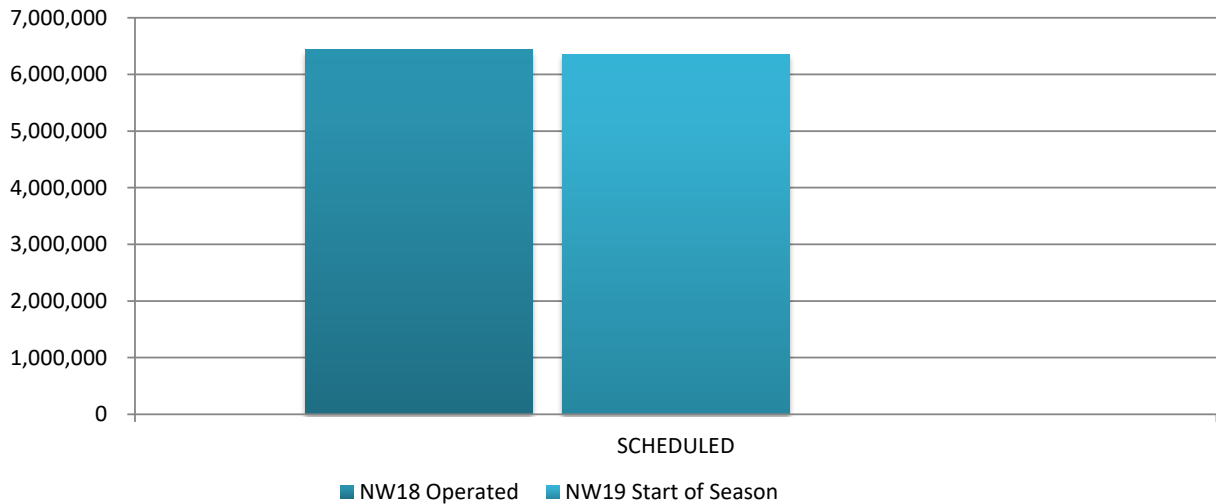
The contents of this report may not be reproduced without the written consent of ACL.

Full Season ATMs by Service Type



	NW18 Operated	NW19 Start of Season	Percentage Change
FREIGHT	771	708	▲ -8%
SCHEDULED	24,576	24,582	▲ 0.0%
TOTAL	25,347	25,290	▲ -0.2%

Full Season Seats by Service Type



	NW18 Operated	NW19 Start of Season	Percentage Change
SCHEDULED	6,431,500	6,357,336	▲ -1.2%
TOTAL	6,431,500	6,357,336	▲ -1.2%

AUCKLAND INTERNATIONAL AIRPORT

PEAK WEEK DEPARTURE FREQUENCIES - BY CARRIER

	OPERATOR	AIRPORT		W18		W19		SEATS +/-	ATMS +/-
				SEATS	ATMS	SEATS	ATMS		
3C	Air Chathams	NLK	Norfolk Island Airport	0	0	50	1	50	1
3C Total				0	0	50	1	50	1
3U	Sichuan Airlines	CTU	Chengdu	993	3	993	3	0	0
3U Total				993	3	993	3	0	0
AA	American Airlines	LAX	Los Angeles International	1,995	7	1,995	7	0	0
AA Total				1,995	7	1,995	7	0	0
AC	Air Canada	YVR	Vancouver	0	0	1,020	4	1,020	4
AC Total				0	0	1,020	4	1,020	4
AWK	Parcel Air	SYD	Sydney Kingsford Smith	0	0	0	5	0	5
AWK Total				0	0	0	5	0	5
CA	Air China	PEK	Beijing Capital	2,051	7	2,051	7	0	0
CA Total				2,051	7	2,051	7	0	0
CI	China Airlines	TPE	Taipei Chiang Kai Shek	2,506	7	2,506	7	0	0
CI Total				2,506	7	2,506	7	0	0
CX	Cathay Pacific	HKG	Hong Kong International	4,536	14	4,676	14	140	0
CX Total				4,536	14	4,676	14	140	0
CZ	China Southern Airlines	CAN	Guangzhou Baiyun	4,158	14	4,011	14	-147	0
CZ Total				4,158	14	4,011	14	-147	0
D7	Airasia X	OOL	Gold Coast Coolangatta	2,639	7	0	0	-2,639	-7
D7 Total				2,639	7	0	0	-2,639	-7
EK	Emirates	DXB	Dubai	5,915	14	5,915	14	0	0
EK Total				5,915	14	5,915	14	0	0
FJ	Fiji Airways	NAN	Nadi International	2,696	14	3,862	19	1,166	5
		SUV	Nausori International Airport	408	3	122	1	-286	-2
FJ Total				3,104	17	3,984	20	880	3
FX	Fedex	CAN	Guangzhou Baiyun	0	1	0	1	0	0
FX Total				0	1	0	1	0	0
GS	Tianjin Airlines	TSN	Tianjin	780	3	0	0	-780	-3
GS Total				780	3	0	0	-780	-3
HA	Hawaiian Airlines	HNL	Honolulu International	1,390	5	1,112	4	-278	-1
HA Total				1,390	5	1,112	4	-278	-1
HJ	Tasman Cargo Airlines	BNE	Brisbane International	0	1	0	0	0	-1

AUCKLAND INTERNATIONAL AIRPORT

PEAK WEEK DEPARTURE FREQUENCIES - BY CARRIER

OPERATOR	AIRPORT	W18		W19		SEATS +/-	ATMS +/-
		SEATS	ATMS	SEATS	ATMS		
	SYD Sydney Kingsford Smith	0	2	0	5	0	3
HJ Total		0	3	0	5	0	2
HU	Hainan Airlines SZX Shenzhen	909	3	1,212	4	303	1
HU Total		909	3	1,212	4	303	1
HX	Hong Kong Airlines HKG Hong Kong International	2,044	7	0	0	-2,044	-7
HX Total		2,044	7	0	0	-2,044	-7
JQ	Jetstar Airways MEL Melbourne	1,674	9	2,046	11	372	2
	OOL Gold Coast Coolangatta	1,488	8	1,860	10	372	2
	RAR Rarotonga	930	5	744	4	-186	-1
	SYD Sydney Kingsford Smith	1,488	8	2,046	11	558	3
JQ Total		5,580	30	6,696	36	1,116	6
KE	Korean Air ICN Seoul Incheon International	2,328	8	3,158	9	830	1
KE Total		2,328	8	3,158	9	830	1
LA	Lan Airlines SCL Santiago Arturo Merino Benitez	2,128	7	1,200	4	-928	-3
	SYD Sydney Kingsford Smith	2,128	7	1,200	4	-928	-3
LA Total		4,256	14	2,400	8	-1,856	-6
MH	Malaysia Airlines KUL Kuala Lumpur International	2,009	7	2,296	8	287	1
MH Total		2,009	7	2,296	8	287	1
MU	China Eastern Airlines PVG Shanghai Pu Dong	2,198	7	1,981	7	-217	0
MU Total		2,198	7	1,981	7	-217	0
NF	Air Vanuatu VLI Vanuatu	680	4	756	6	76	2
NF Total		680	4	756	6	76	2
NZ	Air New Zealand ADL Adelaide	1,540	5	1,412	5	-128	0
	APW Apia Faleolo	2,586	12	2,929	12	343	0
	BNE Brisbane International	4,518	18	4,916	20	398	2
	EZE Buenos Aires Ministro Pistarini	1,560	5	1,560	5	0	0
	HKG Hong Kong International	2,006	7	2,184	7	178	0
	HNL Honolulu International	1,560	5	1,560	5	0	0
	IAH Houston	2,274	7	2,304	7	30	0
	ICN Seoul Incheon International	0	0	1,510	5	1,510	5
	IUE Niue International Airport	336	2	336	2	0	0
	KIX Osaka Kansai International	906	3	916	3	10	0

AUCKLAND INTERNATIONAL AIRPORT

PEAK WEEK DEPARTURE FREQUENCIES - BY CARRIER

OPERATOR	AIRPORT	W18		W19		SEATS +/-	ATMS +/-		
		SEATS	ATMS	SEATS	ATMS				
	LAX Los Angeles International	2,608	8	2,630	8	22	0		
	LHR London Heathrow	2,052	6	2,052	6	0	0		
	MEL Melbourne	7,647	30	9,162	33	1,515	3		
	NAN Nadi International	2,990	11	2,610	10	-380	-1		
	NOU Noumea	504	3	544	3	40	0		
	NRT Tokyo Narita	2,885	10	3,053	10	168	0		
	OOL Gold Coast Coolangatta	1,406	7	1,968	9	562	2		
	ORD Chicago O'Hare International	825	3	1,375	5	550	2		
	PER Perth	2,930	10	2,912	10	-18	0		
	PPT Papeete Faaa	875	3	906	3	31	0		
	PVG Shanghai Pu Dong	2,114	7	2,114	7	0	0		
	RAR Rarotonga	1,478	5	1,559	6	81	1		
	SFO San Francisco International	2,394	7	2,052	6	-342	-1		
	SIN Singapore Changi	1,925	7	1,979	7	54	0		
	SYD Sydney Kingsford Smith	11,032	42	10,417	40	-615	-2		
	TBU Nuku'Alofa Fua'Amotu Internationa	1,806	8	2,653	11	847	3		
	TPE Taipei Chiang Kai Shek	906	3	1,510	5	604	2		
	YVR Vancouver	1,872	6	1,650	6	-222	0		
NZ Total		65,535	240	70,773	256	5,238	16		
OL	Samoan Airlines	APW	Apia Faleolo	1,360	8	1,296	8	-64	0
OL Total				1,360	8	1,296	8	-64	0
PR	Philippine Airlines	MNL	Manila	927	3	927	3	0	0
PR Total				927	3	927	3	0	0
QF	Qantas	BNE	Brisbane International	3,471	15	3,471	15	0	0
		MEL	Melbourne	6,691	28	7,074	35	383	7
		SYD	Sydney Kingsford Smith	8,478	42	8,174	42	-304	0
QF Total				18,640	85	18,719	92	79	7
QR	Qatar Airways	DOH	Doha	1,813	7	1,904	7	91	0
QR Total				1,813	7	1,904	7	91	0
SB	Aircalin Air Caledonie Int	NOU	Noumea	632	4	632	4	0	0
SB Total				632	4	632	4	0	0
SQ	Singapore Airlines	SIN	Singapore Changi	4,935	15	4,935	18	0	3

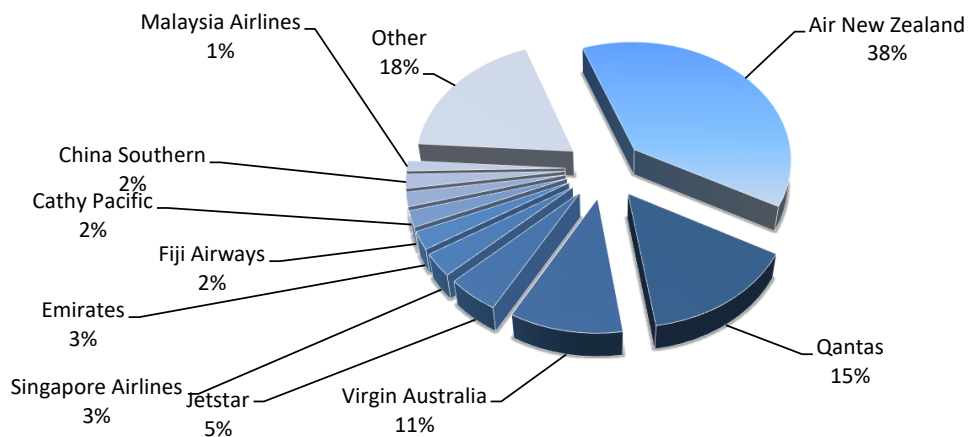
AUCKLAND INTERNATIONAL AIRPORT

PEAK WEEK DEPARTURE FREQUENCIES - BY CARRIER

OPERATOR	AIRPORT	W18		W19		SEATS +/-	ATMS +/-
		SEATS	ATMS	SEATS	ATMS		
SQ Total		4,935	15	4,935	18	0	3
TG	Thai Airways International Public Lt BKK Bangkok International	2,086	7	2,086	7	0	0
TG Total		2,086	7	2,086	7	0	0
TN	Air Tahiti Nui LAX Los Angeles International	882	3	882	3	0	0
TN Total		882	3	882	3	0	0
UA	United Airlines SFO San Francisco International	2,562	7	2,258	7	-304	0
UA Total		2,562	7	2,258	7	-304	0
VA	Virgin Australia Airlines						
	BNE Brisbane International	2,992	17	2,816	16	-176	-1
	MEL Melbourne	2,464	14	2,816	16	352	2
	NTL	528	3	528	3	0	0
	OOL Gold Coast Coolangatta	1,232	7	1,232	7	0	0
	RAR Rarotonga	704	4	704	4	0	0
	SYD Sydney Kingsford Smith	3,344	19	2,992	17	-352	-2
	TBU Nuku'Alofa Fua'Amotu Internationa	352	2	352	2	0	0
VA Total		11,616	66	11,440	65	-176	-1

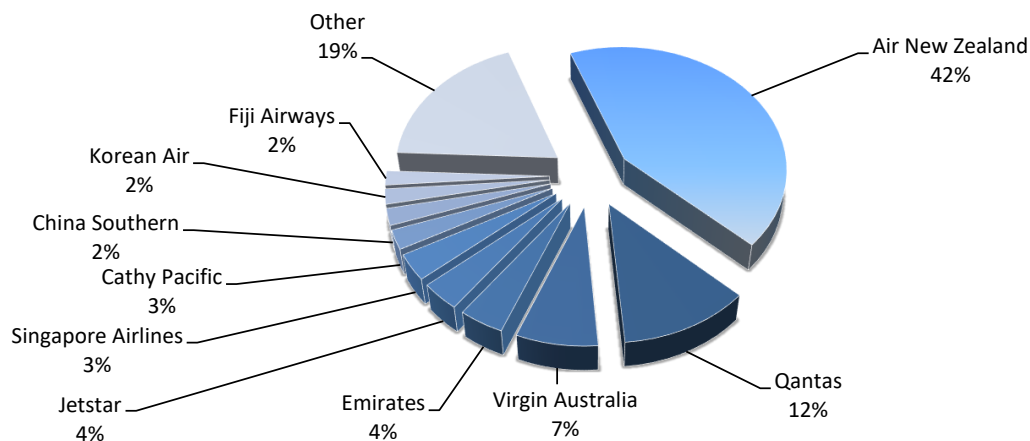
Top 10 Airlines by Air Transport Movements (ATMs)

Airline	Movements
Air New Zealand	9,710
Qantas	3,738
Virgin Australia	2,668
Jetstar	1,232
Singapore Airlines	791
Emirates	616
Fiji Airways	554
Cathy Pacific	490
China Southern	479
Malaysia Airlines	353
Other	4660

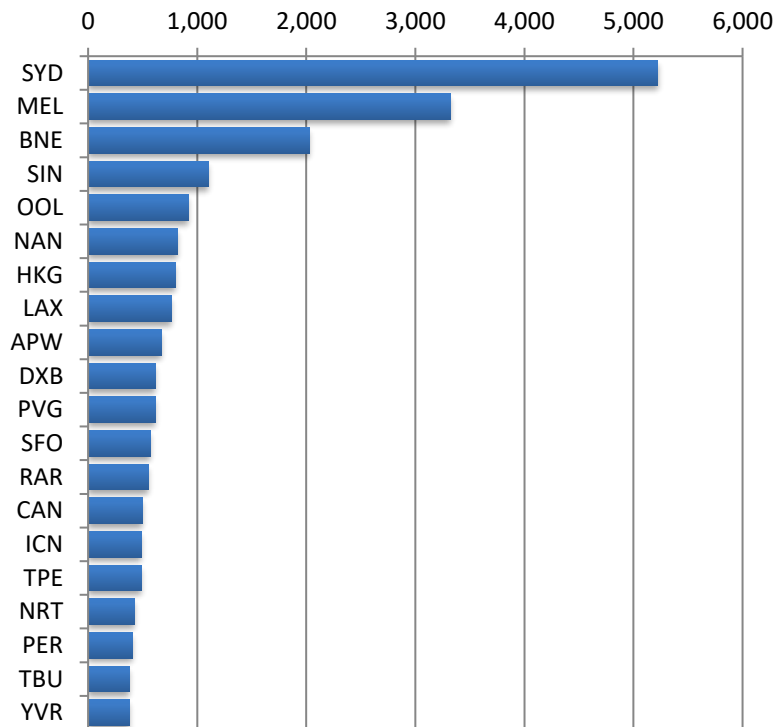


Top 10 Airlines by Air Seats

Airline	Seats
Air New Zealand	2,694,629
Qantas	755,334
Virgin Australia	469,568
Emirates	260,260
Jetstar	229,152
Singapore Airlines	216,522
Cathy Pacific	158,908
China Southern	138,438
Korean Air	125,412
Fiji Airways	117,102
Other	1,192,011



Air Transport Top 20 Movements by Destination



Destination	ATM'S
SYD	5,224
MEL	3,324
BNE	2,032
SIN	1,100
OOL	920
NAN	823
HKG	798
LAX	767
APW	670
DXB	616
PVG	616
SFO	576
RAR	557
CAN	500
ICN	493
TPE	486
NRT	427
PER	411
TBU	382
YVR	376

Air Transport Top 20 Seats by Destination

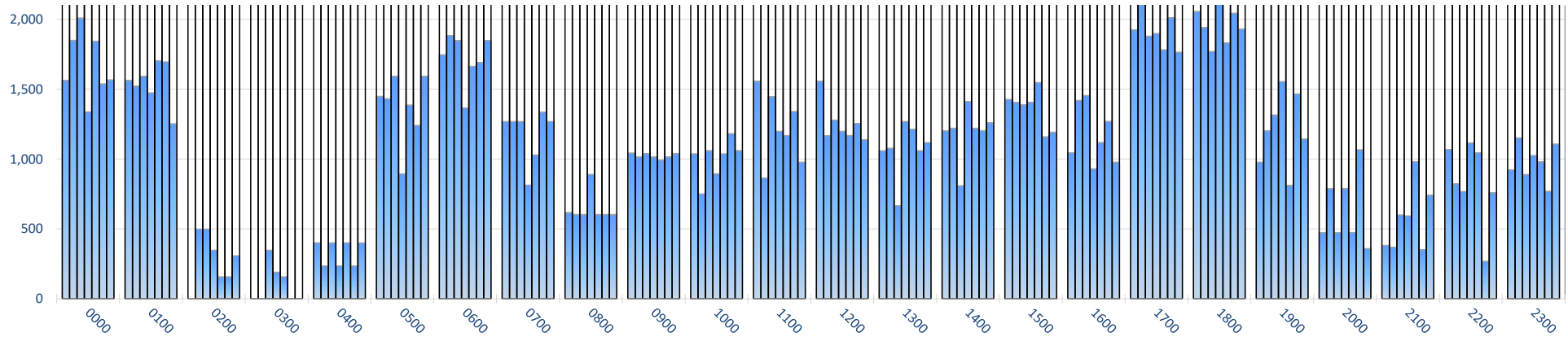


Destination	SEATS
SYD	1,041,864
MEL	719,265
BNE	456,512
SIN	303,301
DXB	260,260
HKG	254,760
LAX	232,256
NAN	207,944
SFO	192,018
PVG	180,180
OOL	175,636
ICN	168,490
TPE	156,856
CAN	138,438
APW	135,692
NRT	129,828
PER	120,666
RAR	111,269
LHR	104,310
KUL	101,311

** EK DXB Direct service

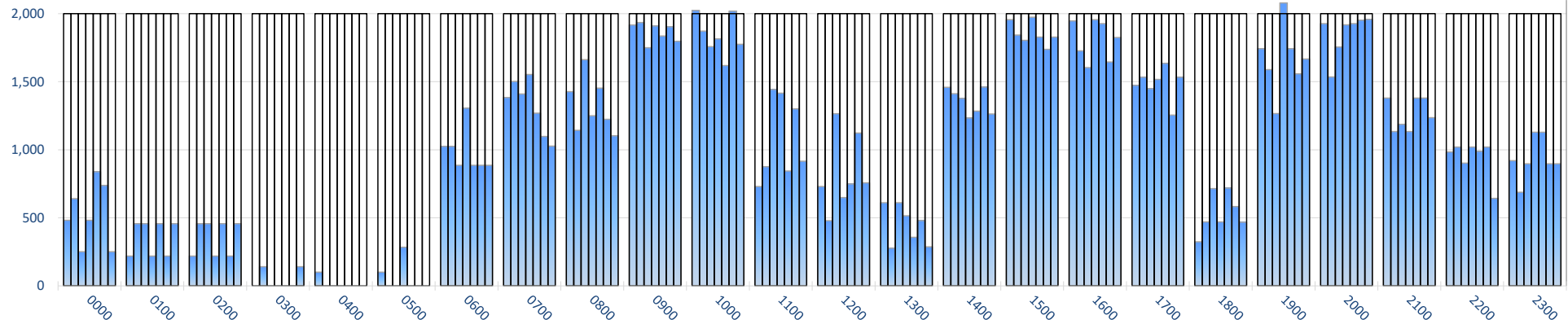
INTERNATIONAL TERMINAL ARRIVALS (PER 60 MINUTES, ROLLING EVERY 5 MINUTES)

Week Movements per Hour - All times LOCAL



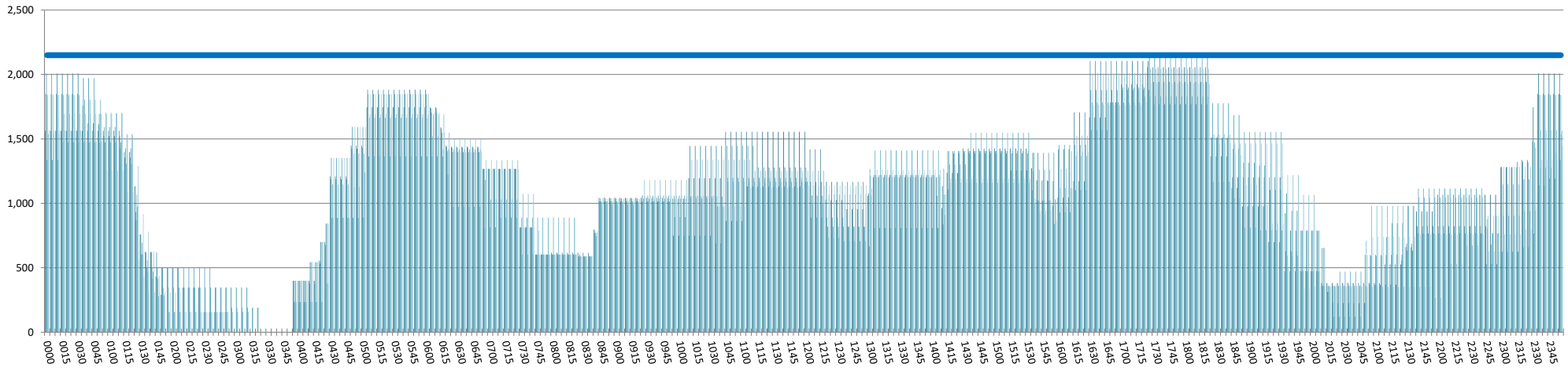
INTERNATIONAL TERMINAL DEPARTURES (PER 60 MINUTES, ROLLING EVERY 5 MINUTES)

Week Movements per Hour - All times LOCAL



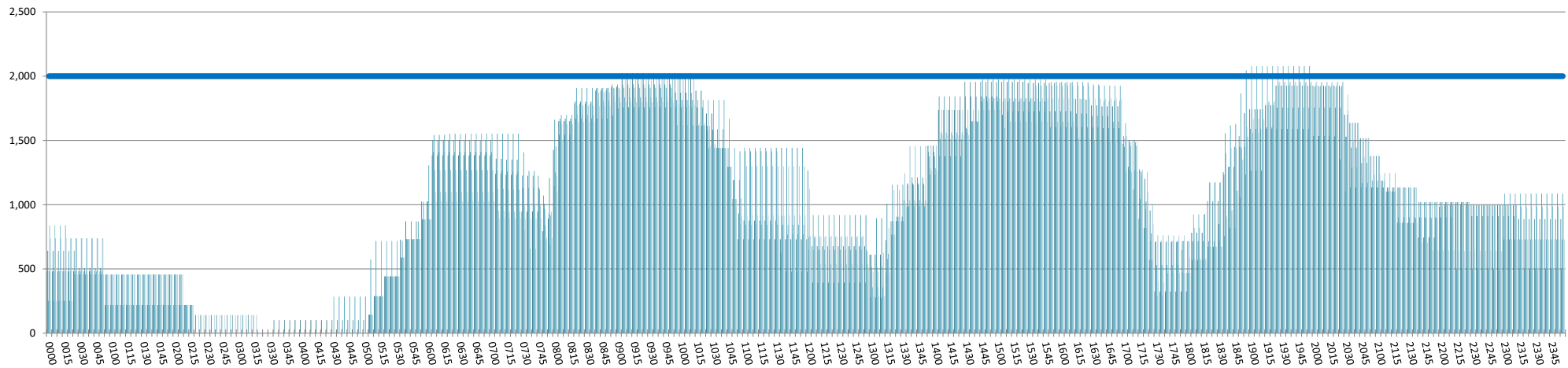
INTERNATIONAL TERMINAL ARRIVALS (PER 60 MINUTES, ROLLING EVERY 5 MINUTES)

Week Movements per Hour - All times LOCAL



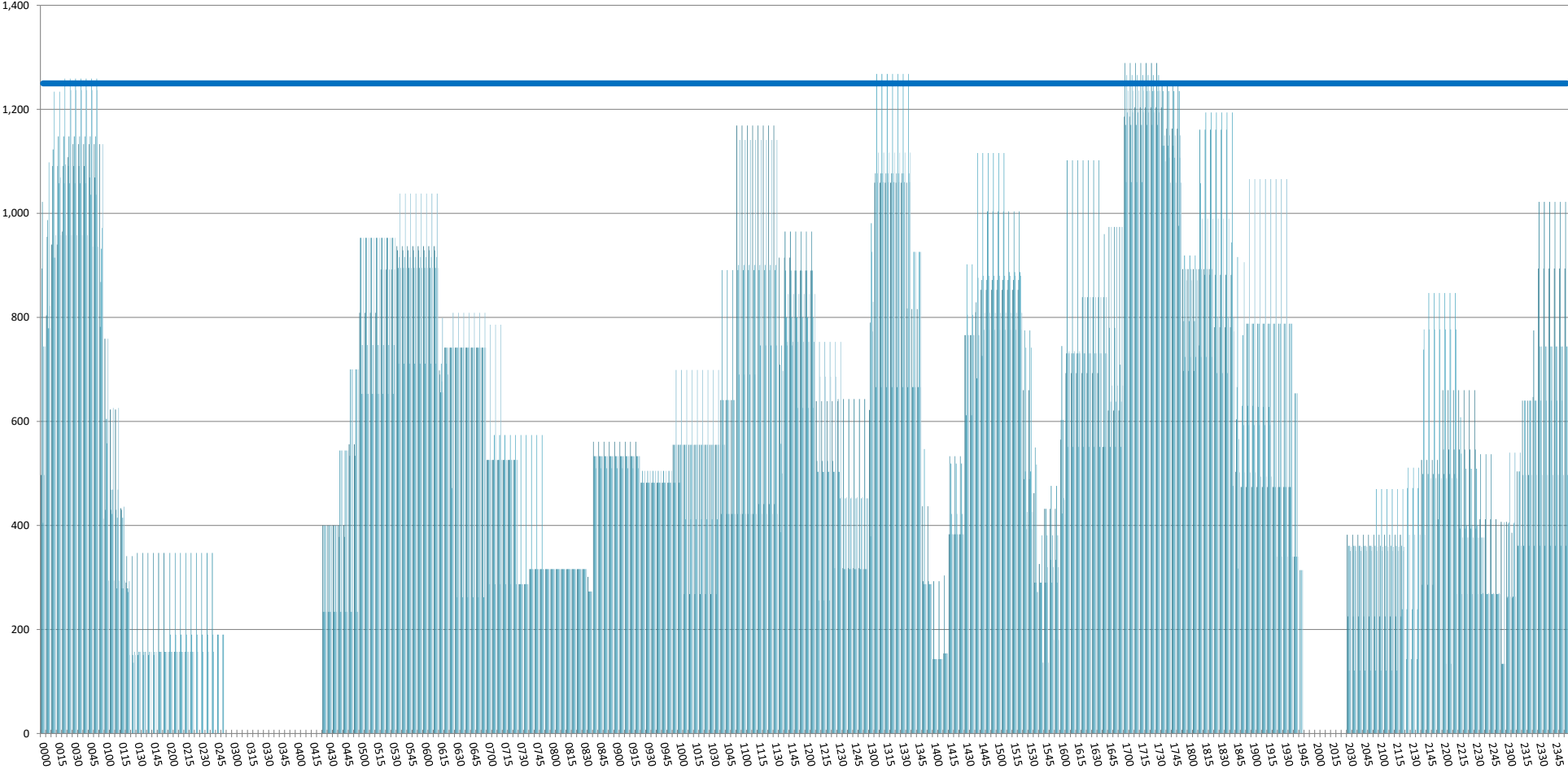
INTERNATIONAL TERMINAL DEPARTURES (PER 60 MINUTES, ROLLING EVERY 5 MINUTES)

Week Movements per Hour - All times LOCAL



INTERNATIONAL TERMINAL ARRIVALS (PER 30 MINUTES, ROLLING EVERY 5 MINUTES)

Week Movements - All times LOCAL



GLOSSARY OF TERMS

Air Transport Movement (ATM)	A scheduled or charter passenger or freight aircraft movement.
Allocation	The allocation of slots such that demand is constrained to fit within declared scheduling limits.
Common Travel Area (CTA)	Services to or from the Republic of Ireland and the Channel Islands.
Demand	The unconstrained demand for slots, prior to any schedule adjustments.
Passenger ATM	A scheduled or charter <u>passenger</u> aircraft movement (ie, excluding all-cargo aircraft movements).
Scheduling Limits	Limiting parameters declared by the Airport Operator used in the coordination process.
Seats	The number of seats based on the aircraft configuration advised by the airline.
Average Week	Peak Week for W19 is 23 to 29 Decemeber 2019
Data Snapshot	All data used for this report was as held 11 October 2019

GUIDE TO HISTOGRAMS

The histograms show the pattern of traffic by time of day against the appropriate scheduling limit. Each time period consist of seven columns representing the days-of-week, Monday through Sunday.