

# Birmingham Airport (BHX)

Winter 2019/20 (W19)



## Start of Season Report

Report Date: Fri 18-Oct-2019

### Headlines

	W19 Start	vs. W18 Start	vs. W18 End
Total Air Transport Movements (Passenger & Freight)	36,948	▼ -2.2%	▼ -1.3%
Total Passenger Air Transport Movements	35,902	▼ -1.8%	▼ -0.5%
Total Passenger Air Transport Movement Seats	5,627,894	▲ 4.0%	▲ 5.2%
Average Seats per Passenger Air Transport Movement	157	▲ 5.9%	▲ 5.7%
Percentage of allocated slots cleared as requested (OK)	99.72%		

### Contents

Page	Content
2	Runway Scheduling Limits
3	Coordinator's Report
4	ATM Allocation by Operator (Full season and Peak Week Comparison)
5	Peak Week - Allocation and Slot Adjustment Distribution by Operator
6	Significant Route Changes
7	Full Season - ATM Analysis
8	Full Season - PATM Seats Analysis
9	Full Season - Terminal Analysis
10	Full Season - Aircraft Size Analysis
11	Full Season - Seasonality
12	Peak Week - Hourly Runway Allocation
13	Peak Week - Hourly Runway Allocation Comparison (W19 Start vs. W18 Start)
14	Peak Week - Hourly Runway Allocation Comparison (W19 Start vs. W18 End)
15	Peak Week Histogram - Departure Passengers (T120/15) - All Terminals - All Operators
16	Peak Week Histogram - Departure Passengers (T60/15) - All Terminals - All Operators
17	Peak Week Histogram - Arrival Passengers (T60/15) - 11 - All Operators
18	Peak Week Histogram - Arrival Passengers (T30/15) - 11 - All Operators
19	Peak Week Histogram - Arrival Passengers (T30/15) - 21 - All Operators
20	Glossary

W18 scheduling season runs from Sun 28-Oct-2018 to Sat 30-Mar-2019 (154 days).

W19 scheduling season runs from Sun 27-Oct-2019 to Sat 28-Mar-2020 (154 days).

### Disclaimer

No warranty whether expressed or implied as to the completeness, accuracy, fitness for purpose, or satisfactory quality is given by ACL regarding the information in this report, which is provided by third parties. Accordingly, ACL excludes all liability with regard to such data.

The contents of this report may not be reproduced without the written consent of ACL.



# Coordinator's Report



Total demand	36,949	slots		
Total slots allocated	36,948	slots	100.00%	of total demand
Number of slots cleared OK	36,843	slots	99.72%	of total slots cleared

## Slots adjusted (not OK) due to:

RUNWAY constraints	31	slots	29.5%	of total slots adjusted
TERMINAL constraints	7	slots	6.7%	of total slots adjusted
STAND constraints	-	slots	0.0%	of total slots adjusted
NIGHT constraints	6	slots	5.7%	of total slots adjusted
OTHER constraints	55	slots	52.4%	of total slots adjusted
ARR/DEP TURNAROUND feasibility	6	slots	5.7%	of total slots adjusted

## Executive Summary

When comparing the start of W19 with the start of W18 - Jet2 have seen the biggest increase in ATMs by 38.9% to 3,322 while seats have also increased by 38.9% to 627,009. Flybe has seen the biggest decrease in ATM's, down 23.6% at 10,880 and seats are down by 282,588 (23.8%). TUI have decreased ATMs by 12.3% to 1,920 and seats are down by 9.1% at 419,076. Ryanair has remained stable.

This Winter we have seen new routes from FlyEgypt, Freebird Airlines, Enterair, Lauda Motion, PIA & Wizz Air.

Thomas Cook slots are included in this report, a summary of ATMs and seats comparing W18 start of season to W19 start of season by route can be found on page 26 & 27.

## Runway Constraints

- R60 - hourly runway constraint.
- R15 - 15 minute runway constraint.

## Terminal Constraints

- T60/15 - hourly departure terminal constraint that rolls every 15 minutes.
- T2H/15 - two hourly departure terminal constraint that rolls every 15 minutes.
- T30/15 - half hourly arrival terminal constraint that rolls every 15 minutes (T1 & T2 INT and CTA).
- T60/15 - hourly arrival terminal constraint that rolls every 15 minutes (T1 DOMESTIC).

## Stand Constraints

No Stand Constraint issues.

## Night Constraints

- Birmingham Airport Night Flying Policy in place.
- Effective from 28th October 2018 to 30th October 2021.

## Other Constraints

- Currently there are no permitted training flights at BHX.
- Only exemption is for based operators / aircraft and RAF Brize Norton aircraft with prior approval.

## Arr/Dep Turnaround Feasibility

- No Turnaround Feasibility issues.

# Air Transport Movement Allocation by Operator

Comparison between W18 End vs. W19 Start



Operator	FULL SEASON ALLOCATION								PEAK WEEK ALLOCATION							
	W18 ATMs	W19 ATMs	+/- change	W19 Rank	W18 Seats	W19 Seats	+/- change	W19 Rank	W18 ATMs	W19 ATMs	+/- change	W19 Rank	W18 Seats	W19 Seats	+/- change	W19 Rank
Aer Lingus	2,325	2,312	-13	4	273,656	272,816	-840	7	108	104	-4	5	12,876	12,384	-492	8
Air Arabia Maroc	88	-	-88	47	15,312	-	-15,312	40	4	-	-4	34	696	-	-696	29
Air France	798	798	0	12	120,746	127,696	6,950	13	40	38	-2	10	6,034	5,996	-38	13
Air India	238	264	26	21	60,928	67,584	6,656	20	12	12	0	21	3,072	3,072	0	18
Airest	209	-	-209	47	-	-	0	40	8	-	-8	34	-	-	0	29
Austrian Airlines	30	30	0	32	5,112	5,220	108	28	-	-	0	34	-	-	0	29
Blue Air	252	132	-120	27	45,148	24,948	-20,200	24	12	6	-6	25	2,144	1,134	-1,010	22
BLUE CITY AVIATION	17	-	-17	47	-	-	0	40	-	-	0	34	-	-	0	29
British Airways	11	-	-11	47	1,148	-	-1,148	40	8	-	-8	34	784	-	-784	29
Brussels Airlines	707	904	197	10	70,366	119,640	49,274	14	34	34	0	12	3,332	4,766	1,434	14
BUSINESS WINGS	28	-	-28	47	-	-	0	40	-	-	0	34	-	-	0	29
Corendon Airlines Europe	7	1	-6	43	1,323	189	-1,134	36	-	-	0	34	-	-	0	29
CSA Czech Airlines	168	10	-158	38	29,318	1,890	-27,428	32	8	6	-2	25	1,414	1,134	-280	22
Eastern Airways	2	-	-2	47	100	-	-100	40	-	-	0	34	-	-	0	29
EasyJet	1,072	1,058	-14	9	179,660	183,768	4,108	10	38	38	0	10	6,228	6,588	360	11
EasyJet Switzerland	166	184	18	25	28,176	31,884	3,708	23	6	6	0	25	1,056	996	-60	26
Emirates	617	616	-1	14	373,736	378,840	5,104	5	28	28	0	15	17,220	17,220	0	6
Enter Air	19	110	91	30	3,591	20,790	17,199	27	-	-	0	34	-	-	0	29
Eurowings	1,101	1,130	29	8	163,986	180,936	16,950	11	44	48	4	9	6,788	7,808	1,020	10
Federal Express	464	320	-144	19	-	-	0	40	24	16	-8	19	-	-	0	29
Fleetair	26	-	-26	47	-	-	0	40	-	-	0	34	-	-	0	29
Flybe	12,762	10,851	-1,911	1	1,061,616	898,638	-162,978	1	594	511	-83	1	48,888	44,328	-4,560	3
FlyEgypt	-	14	14	35	-	2,604	2,604	30	-	2	2	31	-	372	372	27
Freebird Airlines	1	14	13	35	180	2,520	2,340	31	-	-	0	34	-	-	0	29
Iberia Express	134	132	-2	27	23,040	23,760	720	25	8	6	-2	25	1,386	1,080	-306	24
Jet2.com	2,364	3,309	945	3	446,847	625,875	179,028	3	216	309	93	2	40,824	58,787	17,963	1
Jota Aviation	13	18	5	34	762	1,710	948	33	-	2	2	31	-	190	190	28
KLM Royal Dutch Airlines	1,204	1,372	168	7	195,400	212,058	16,658	8	56	56	0	8	9,068	9,068	0	9
Lauda Motion	-	130	130	29	-	23,400	23,400	26	-	6	6	25	-	1,080	1,080	24
Loganair	-	13	13	37	-	637	637	34	-	-	0	34	-	-	0	29
Lufthansa	1,943	1,966	23	5	306,534	325,570	19,036	6	94	94	0	7	14,632	15,578	946	7
PIA Pakistan International	130	176	46	26	43,026	69,168	26,142	18	6	8	2	24	1,974	3,144	1,170	17
Qatar Airways	308	306	-2	20	78,232	77,724	-508	15	14	14	0	20	3,556	3,556	0	15
RAF-Avia	202	220	18	23	-	-	0	40	10	10	0	22	-	-	0	29
Ryanair	4,677	4,710	33	2	883,953	890,190	6,237	2	226	254	28	3	42,714	48,006	5,292	2
SAS Scandinavian	481	490	9	16	53,480	70,686	17,206	17	22	24	2	16	2,562	2,940	378	19
SprintAir	15	1	-14	43	-	-	0	40	-	1	1	33	-	-	0	29
Star Air	12	6	-6	40	-	-	0	40	-	-	0	34	-	-	0	29
Swiss International	542	550	8	15	69,766	68,268	-1,498	19	22	24	2	16	2,968	2,896	-72	20
Thomas Cook (UK)	891	893	2	11	185,180	194,980	9,800	9	82	98	16	6	17,160	20,640	3,480	5
Titan Airways	9	24	15	33	1,714	4,766	3,052	29	-	-	0	34	-	-	0	29
TUI Airways	1,673	1,797	124	6	382,786	419,076	36,290	4	99	107	8	4	21,511	23,455	1,944	4
Turkish Airlines	438	440	2	18	72,958	74,140	1,182	16	20	20	0	18	3,272	3,370	98	16
Turkmenistan Airlines	173	200	27	24	37,469	37,800	331	22	10	-	-10	34	1,890	-	-1,890	29
Via Tauro	36	-	-36	47	-	-	0	40	2	-	-2	34	-	-	0	29
Vueling	161	226	65	22	28,954	40,680	11,726	21	8	10	2	22	1,440	1,800	360	21
Vulkan Air	15	42	27	31	-	-	0	40	1	3	2	30	-	-	0	29
West Atlantic Cargo	42	7	-35	39	-	-	0	40	-	-	0	34	-	-	0	29
Wizz Air	504	716	212	13	101,920	146,780	44,860	12	22	32	10	13	4,460	6,560	2,100	12
Zimex Aviation	215	450	235	17	-	-	0	40	10	30	20	14	-	-	0	29
<b>TOTAL</b>	<b>37,430</b>	<b>36,948</b>	<b>-482</b>		<b>5,349,836</b>	<b>5,627,894</b>	<b>278,058</b>		<b>1,903</b>	<b>1,957</b>	<b>54</b>		<b>280,182</b>	<b>307,948</b>	<b>27,766</b>	

Operators with 0 'ATMs' in both W18 End & W19 Start schedules are included in the table due to appearing in the W18 Start schedule (either with/without allocated slots).

# Peak Week - Allocation and Slot Adjustment Distribution by Operator

Schedule: W19 Start



Operator	W19 allocated ATMs	SLOT ADJUSTMENTS (MINUTES OFF REQUESTED TIME)														Requests with NO slot allocated	
		0	5	10	15	20	25	30	35	40	45	50	55	60	>60		
Aer Lingus	104	100.0%	0.0%	0.0%	0.0%	0.0%	0.0%	0.0%	0.0%	0.0%	0.0%	0.0%	0.0%	0.0%	0.0%	0.0%	-
Air France	38	100.0%	0.0%	0.0%	0.0%	0.0%	0.0%	0.0%	0.0%	0.0%	0.0%	0.0%	0.0%	0.0%	0.0%	0.0%	-
Air India	12	100.0%	0.0%	0.0%	0.0%	0.0%	0.0%	0.0%	0.0%	0.0%	0.0%	0.0%	0.0%	0.0%	0.0%	0.0%	-
Blue Air	6	100.0%	0.0%	0.0%	0.0%	0.0%	0.0%	0.0%	0.0%	0.0%	0.0%	0.0%	0.0%	0.0%	0.0%	0.0%	-
Brussels Airlines	34	100.0%	0.0%	0.0%	0.0%	0.0%	0.0%	0.0%	0.0%	0.0%	0.0%	0.0%	0.0%	0.0%	0.0%	0.0%	-
CSA Czech Airlines	6	100.0%	0.0%	0.0%	0.0%	0.0%	0.0%	0.0%	0.0%	0.0%	0.0%	0.0%	0.0%	0.0%	0.0%	0.0%	-
EasyJet	38	100.0%	0.0%	0.0%	0.0%	0.0%	0.0%	0.0%	0.0%	0.0%	0.0%	0.0%	0.0%	0.0%	0.0%	0.0%	-
EasyJet Switzerland	6	100.0%	0.0%	0.0%	0.0%	0.0%	0.0%	0.0%	0.0%	0.0%	0.0%	0.0%	0.0%	0.0%	0.0%	0.0%	-
Emirates	28	100.0%	0.0%	0.0%	0.0%	0.0%	0.0%	0.0%	0.0%	0.0%	0.0%	0.0%	0.0%	0.0%	0.0%	0.0%	-
Eurowings	48	100.0%	0.0%	0.0%	0.0%	0.0%	0.0%	0.0%	0.0%	0.0%	0.0%	0.0%	0.0%	0.0%	0.0%	0.0%	-
Federal Express	16	100.0%	0.0%	0.0%	0.0%	0.0%	0.0%	0.0%	0.0%	0.0%	0.0%	0.0%	0.0%	0.0%	0.0%	0.0%	-
Flybe	511	100.0%	0.0%	0.0%	0.0%	0.0%	0.0%	0.0%	0.0%	0.0%	0.0%	0.0%	0.0%	0.0%	0.0%	0.0%	-
FlyEgypt	2	100.0%	0.0%	0.0%	0.0%	0.0%	0.0%	0.0%	0.0%	0.0%	0.0%	0.0%	0.0%	0.0%	0.0%	0.0%	-
Iberia Express	6	100.0%	0.0%	0.0%	0.0%	0.0%	0.0%	0.0%	0.0%	0.0%	0.0%	0.0%	0.0%	0.0%	0.0%	0.0%	-
Jet2.com	309	100.0%	0.0%	0.0%	0.0%	0.0%	0.0%	0.0%	0.0%	0.0%	0.0%	0.0%	0.0%	0.0%	0.0%	0.0%	-
Jota Aviation	2	100.0%	0.0%	0.0%	0.0%	0.0%	0.0%	0.0%	0.0%	0.0%	0.0%	0.0%	0.0%	0.0%	0.0%	0.0%	-
KLM Royal Dutch Airlines	56	100.0%	0.0%	0.0%	0.0%	0.0%	0.0%	0.0%	0.0%	0.0%	0.0%	0.0%	0.0%	0.0%	0.0%	0.0%	-
Lauda Motion	6	100.0%	0.0%	0.0%	0.0%	0.0%	0.0%	0.0%	0.0%	0.0%	0.0%	0.0%	0.0%	0.0%	0.0%	0.0%	-
Lufthansa	94	100.0%	0.0%	0.0%	0.0%	0.0%	0.0%	0.0%	0.0%	0.0%	0.0%	0.0%	0.0%	0.0%	0.0%	0.0%	-
PIA Pakistan International	8	100.0%	0.0%	0.0%	0.0%	0.0%	0.0%	0.0%	0.0%	0.0%	0.0%	0.0%	0.0%	0.0%	0.0%	0.0%	-
Qatar Airways	14	100.0%	0.0%	0.0%	0.0%	0.0%	0.0%	0.0%	0.0%	0.0%	0.0%	0.0%	0.0%	0.0%	0.0%	0.0%	-
RAF-Avia	10	90.0%	0.0%	0.0%	0.0%	0.0%	0.0%	0.0%	0.0%	0.0%	0.0%	0.0%	0.0%	0.0%	0.0%	10.0%	-
Ryanair	254	100.0%	0.0%	0.0%	0.0%	0.0%	0.0%	0.0%	0.0%	0.0%	0.0%	0.0%	0.0%	0.0%	0.0%	0.0%	-
SAS Scandinavian	24	100.0%	0.0%	0.0%	0.0%	0.0%	0.0%	0.0%	0.0%	0.0%	0.0%	0.0%	0.0%	0.0%	0.0%	0.0%	-
SprintAir	1	100.0%	0.0%	0.0%	0.0%	0.0%	0.0%	0.0%	0.0%	0.0%	0.0%	0.0%	0.0%	0.0%	0.0%	0.0%	-
Swiss International	24	100.0%	0.0%	0.0%	0.0%	0.0%	0.0%	0.0%	0.0%	0.0%	0.0%	0.0%	0.0%	0.0%	0.0%	0.0%	-
Thomas Cook (UK)	98	100.0%	0.0%	0.0%	0.0%	0.0%	0.0%	0.0%	0.0%	0.0%	0.0%	0.0%	0.0%	0.0%	0.0%	0.0%	-
TUI Airways	107	99.1%	0.0%	0.0%	0.0%	0.0%	0.0%	0.0%	0.0%	0.0%	0.0%	0.0%	0.0%	0.0%	0.0%	0.9%	-
Turkish Airlines	20	100.0%	0.0%	0.0%	0.0%	0.0%	0.0%	0.0%	0.0%	0.0%	0.0%	0.0%	0.0%	0.0%	0.0%	0.0%	-
Vueling	10	100.0%	0.0%	0.0%	0.0%	0.0%	0.0%	0.0%	0.0%	0.0%	0.0%	0.0%	0.0%	0.0%	0.0%	0.0%	-
Vulkan Air	3	100.0%	0.0%	0.0%	0.0%	0.0%	0.0%	0.0%	0.0%	0.0%	0.0%	0.0%	0.0%	0.0%	0.0%	0.0%	-
Wizz Air	32	96.9%	3.1%	0.0%	0.0%	0.0%	0.0%	0.0%	0.0%	0.0%	0.0%	0.0%	0.0%	0.0%	0.0%	0.0%	-
Zimex Aviation	30	66.7%	0.0%	0.0%	0.0%	0.0%	0.0%	0.0%	0.0%	0.0%	0.0%	0.0%	0.0%	0.0%	0.0%	16.7%	-
<b>TOTAL</b>	<b>1,957</b>	<b>99.3%</b>	<b>0.1%</b>	<b>0.0%</b>	<b>0.0%</b>	<b>0.0%</b>	<b>0.0%</b>	<b>0.0%</b>	<b>0.0%</b>	<b>0.0%</b>	<b>0.0%</b>	<b>0.0%</b>	<b>0.0%</b>	<b>0.0%</b>	<b>0.0%</b>	<b>0.4%</b>	<b>-</b>

Operators with 0 'allocated ATMs' and 0 'Requests with NO slot allocated' in W19, are included in this list due to having slots allocated in either W18 Start or W18 End schedules.

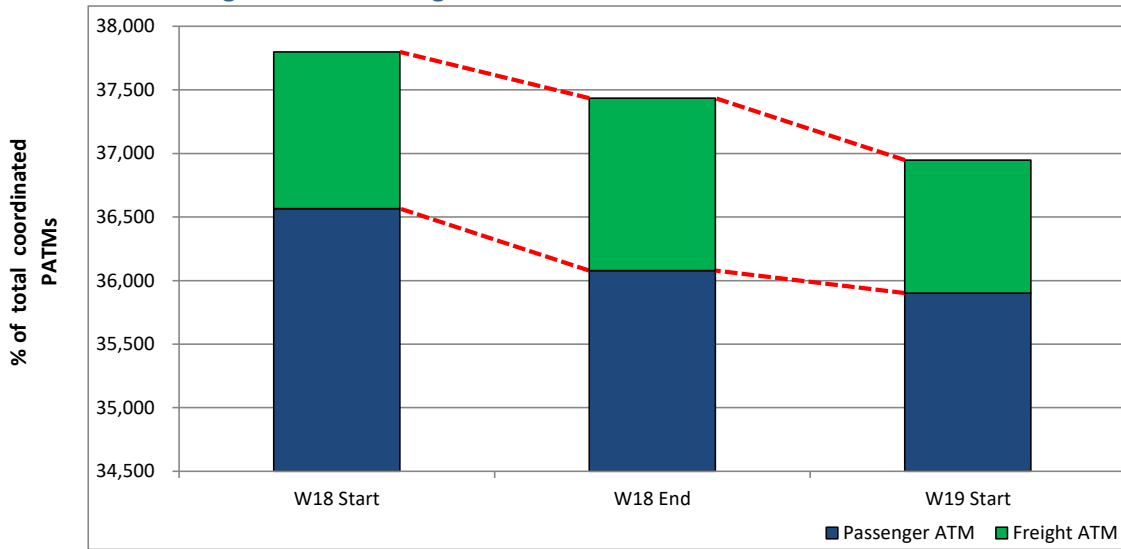
## Significant Route Changes

Operator	Category	Description of change from W18 schedule to W19 schedule
Aer Lingus	CHANGE	Decrease Dublin service.
Air Arabia Maroc	<b>CANCELLED</b>	Agadir service.
Air France	CHANGE	Decrease Paris Ch. De Gaulle service.
Blue Air	<b>CANCELLED</b>	Larnaca service.
Brussels Airlines	CHANGE	Increase Brussels service.
CSA Czech Airlines	CHANGE	Decrease Prague service.
EasyJet	CHANGE	Decrease Belfast & Geneva services.
Enter Air	<b>NEW</b>	Banjul, Chambery & Hurghada services.
Eurowings	CHANGE	Decrease Dusseldorf service.
Flybe	CHANGE	Decrease Aberdeen, Amsterdam, Belfast City, Paris Ch. De Gaulle, Dusseldorf, Edinburgh, Gurnsey, Glasgow, Inverness, Lyon, Milan Malpensa, Knock, Stuttgart & Berlin services.
Flybe	CHANGE	Increase Jersey service.
Flybe	<b>CANCELLED</b>	Belfast International, Corfu, Cardiff, Doncaster, Hanover, Hamburg, Lleida, London Gatwick, Nice & Salzburg services.
FlyEgypt	<b>NEW</b>	Hurghada service.
Freebird Airlines	<b>NEW</b>	Dubrovnik service.
Jet2.com	<b>NEW</b>	Budapest & Innsbruck services.
Jet2.com	CHANGE	Increase Lanzarote, Antalya, Faro, Fuerteventura, Las Palmas De Gran Canaria & Tenerife services.
Jet2.com	<b>CANCELLED</b>	Ivalo service.
KLM Royal Dutch Airlines	CHANGE	Increase Amsterdam service.
Lauda Motion	<b>NEW</b>	Vienna service.
Lufthansa	CHANGE	Decrease Frankfurt service.
PIA Pakistan International	<b>NEW</b>	Sialkot service.
PIA Pakistan International	CHANGE	Increase Islamabad service.
Primera Air	<b>CANCELLED</b>	Malaga, Tenerife & Toronto services.
Ryanair	<b>NEW</b>	Milan Malpensa, Porto,
Ryanair	CHANGE	Decrease Dublin service.
Ryanair	<b>CANCELLED</b>	Murcia & Vilnius services.
SAS Scandinavian	CHANGE	Decrease Stockholm Arlanda & Copenhagen services.
TUI Airways	<b>NEW</b>	Marsa Alam & Agadir services.
TUI Airways	<b>CANCELLED</b>	Goa, Geneva, La Romana & Funchal services.
Vueling	CHANGE	Increase Barcelona service.
Wizz Air	<b>NEW</b>	Krakow service.

# Full Season - ATM Analysis

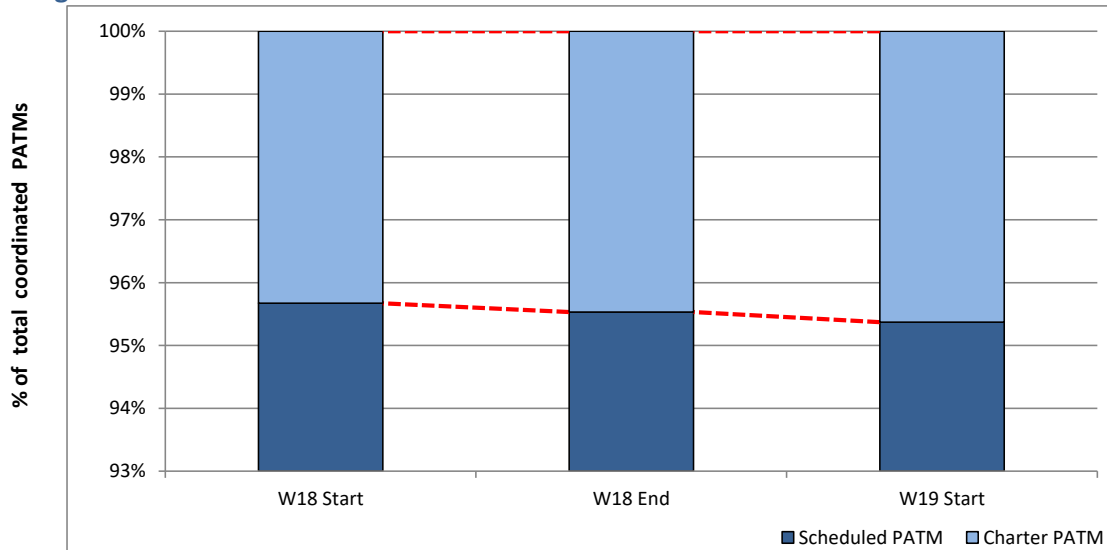


## Total ATMs: Passenger ATMs vs. Freight ATMs



Schedule Snapshot

## Passenger ATMs: Scheduled vs. Charter

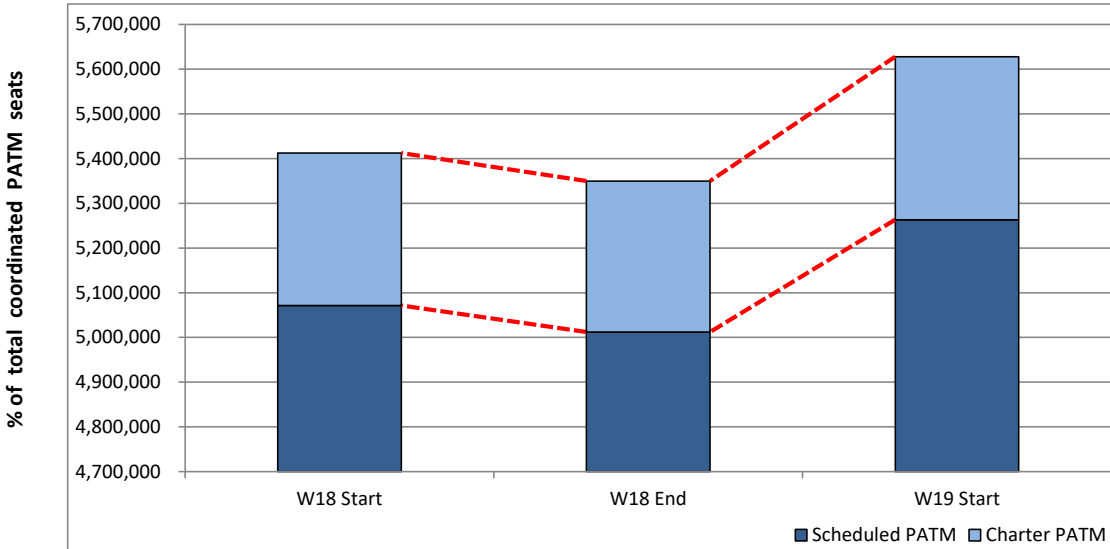


Schedule Snapshot

# Full Season - PATM Seats Analysis

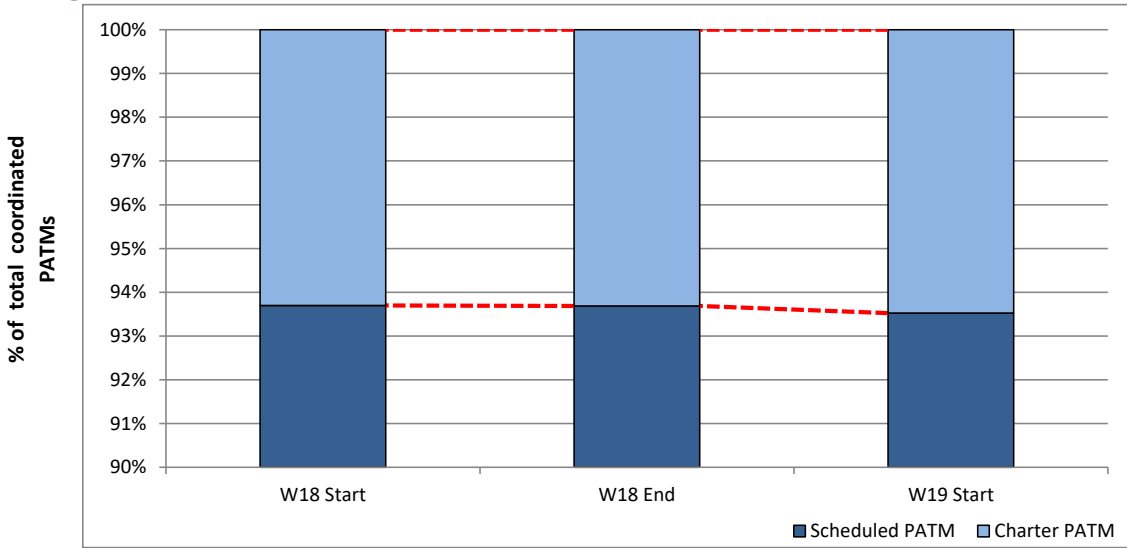


## Total Passenger ATM seats: Scheduled vs. Charter



Schedule Snapshot

## Passenger ATM seats: Scheduled vs. Charter



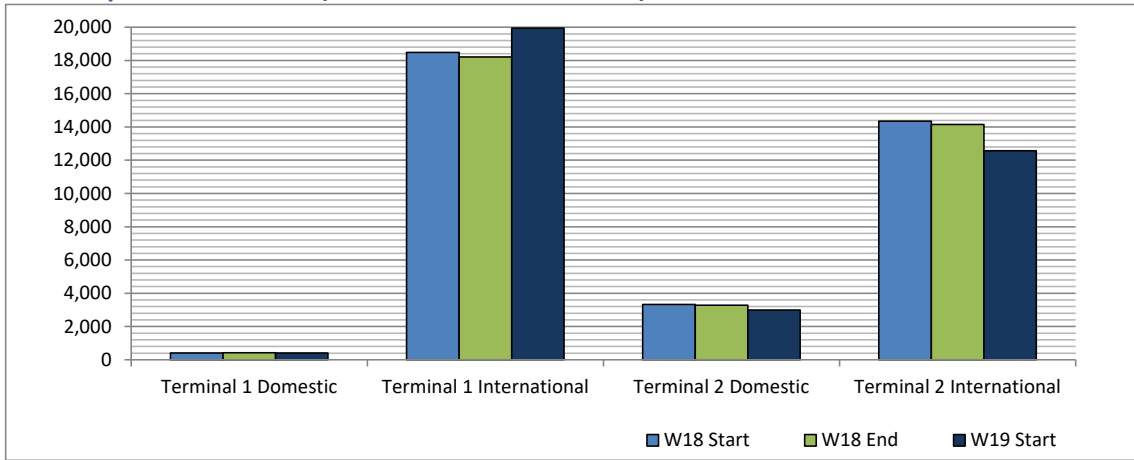
Schedule Snapshot



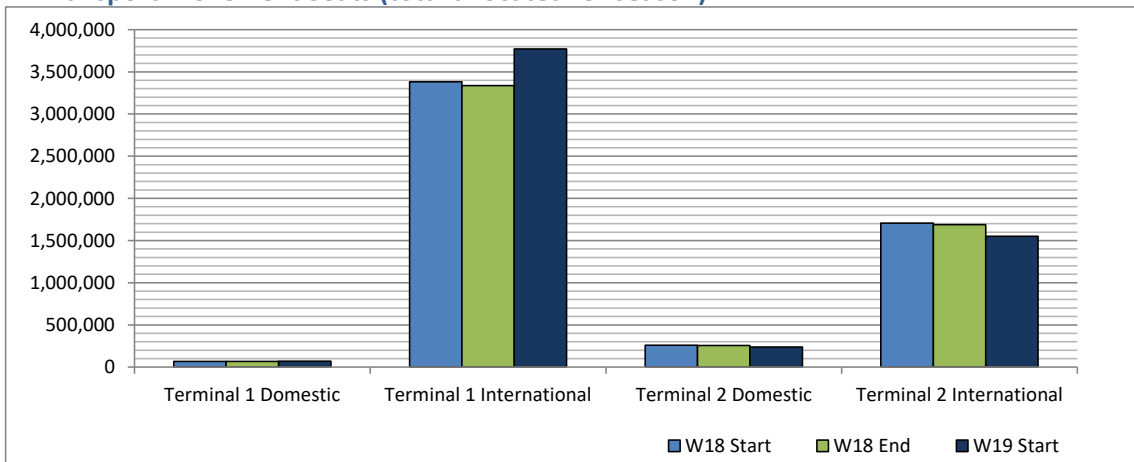
# Full Season - Terminal Analysis



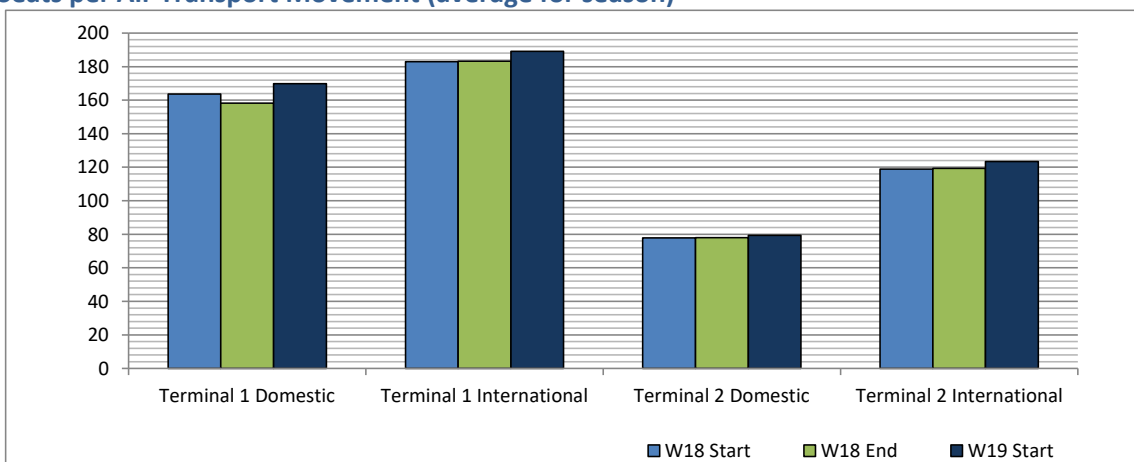
## Air Transport Movements (total allocated for season)



## Air Transport Movement Seats (total allocated for season)



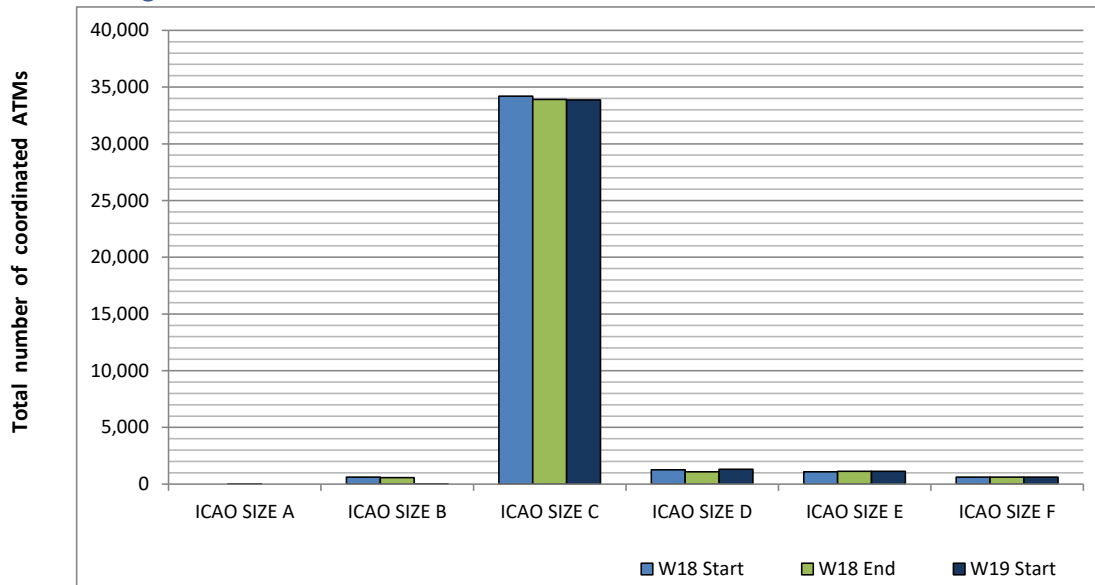
## Seats per Air Transport Movement (average for season)



# Full Season - Aircraft Size Analysis

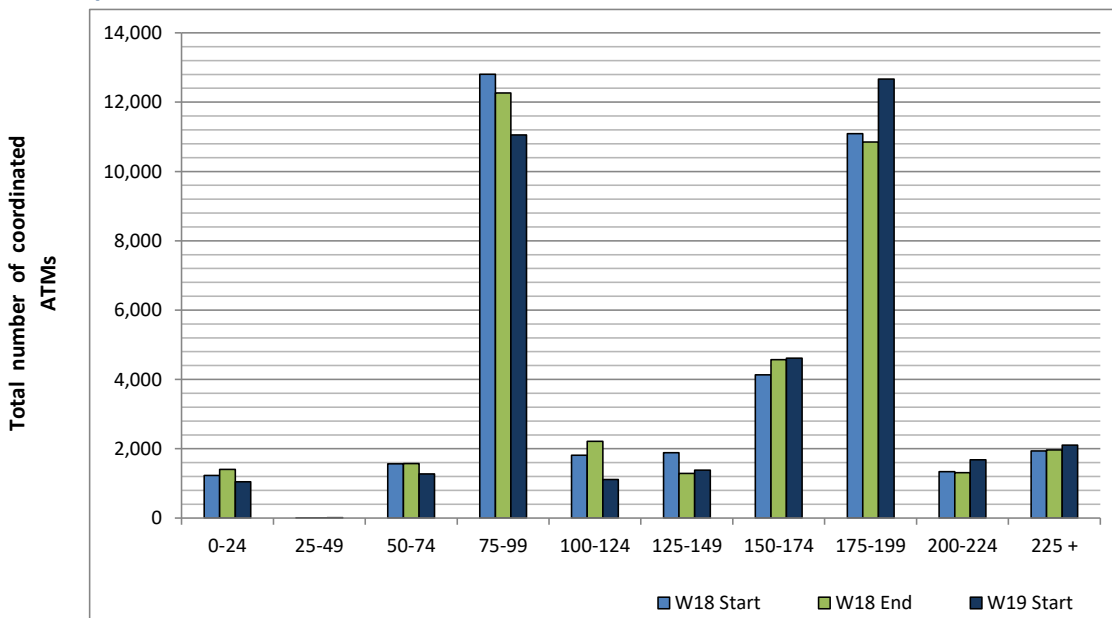


## ICAO size designation



Note: See Glossary for definitions of ICAO SIZE groupings

## Air Transport Movement seat distribution

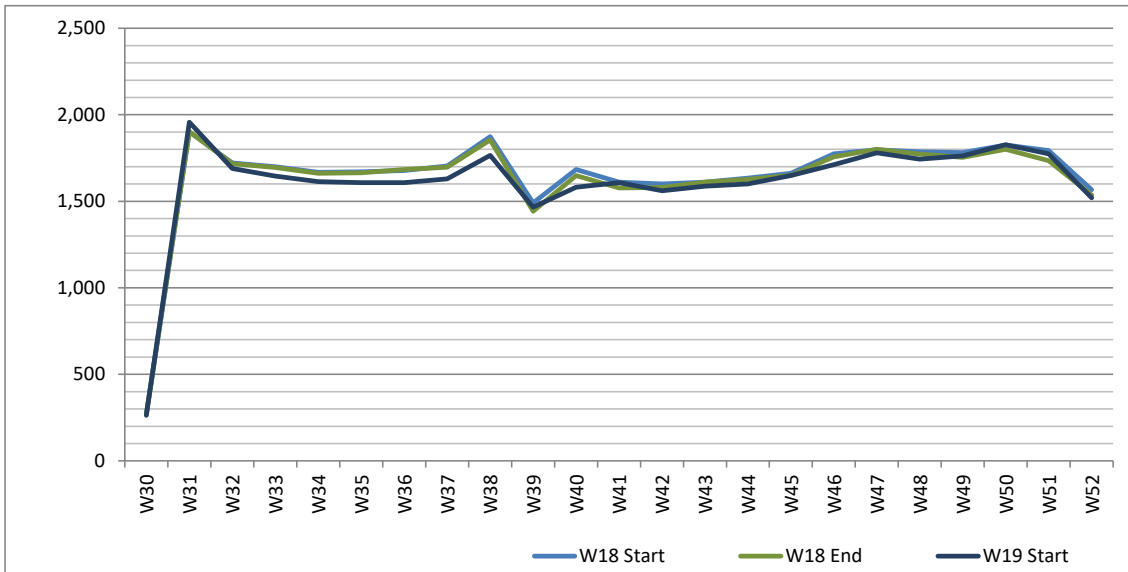


Note: FREIGHT-ONLY services with 0 seats are included in the first seat band '0-24'

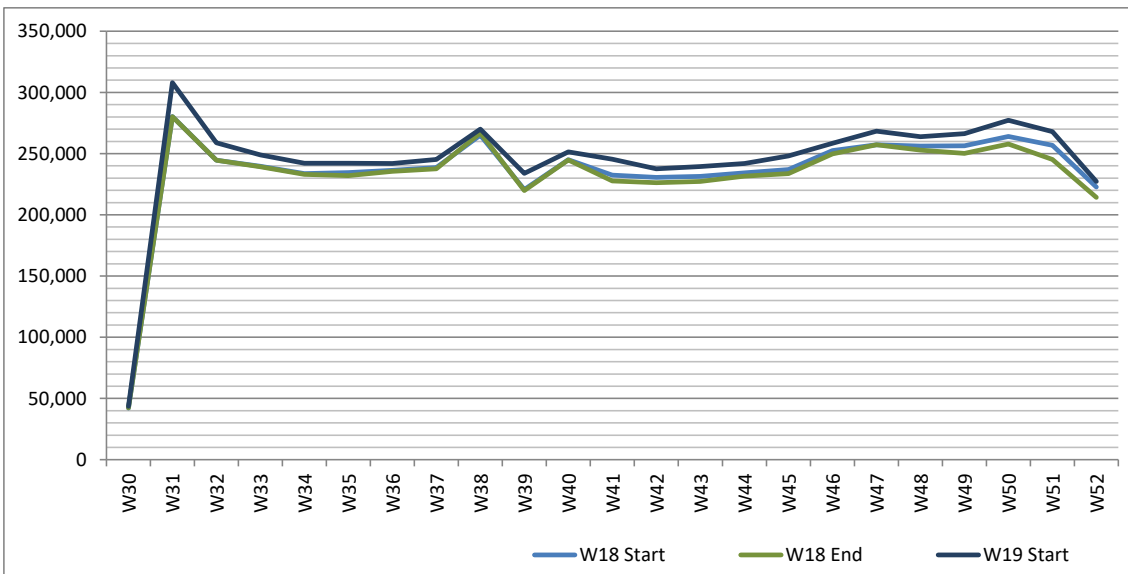
# Full Season - Seasonality



**Air Transport Movements by week of season**



**Air Transport Movement Seats by week of season**



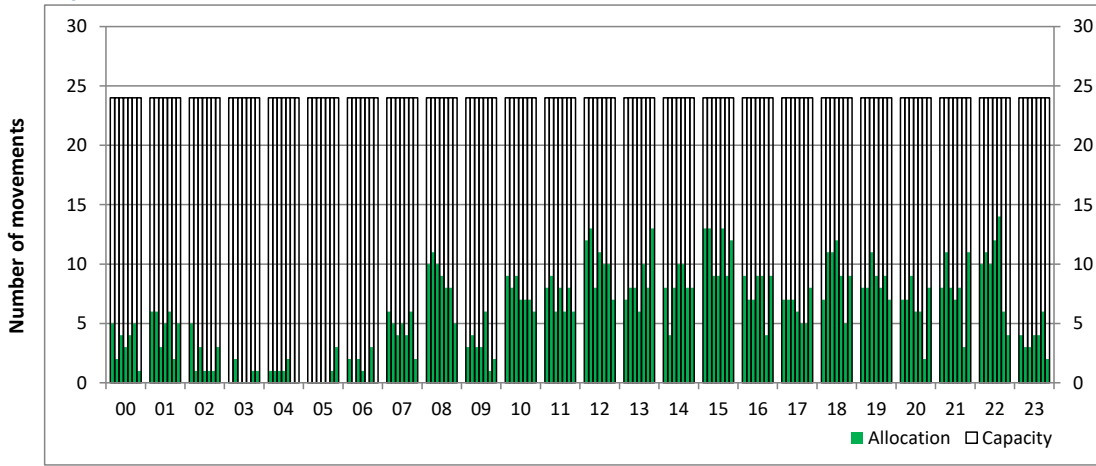
# Peak Week - Hourly Runway Allocation

Schedule: W19 Start



## Hourly Arrival Allocation

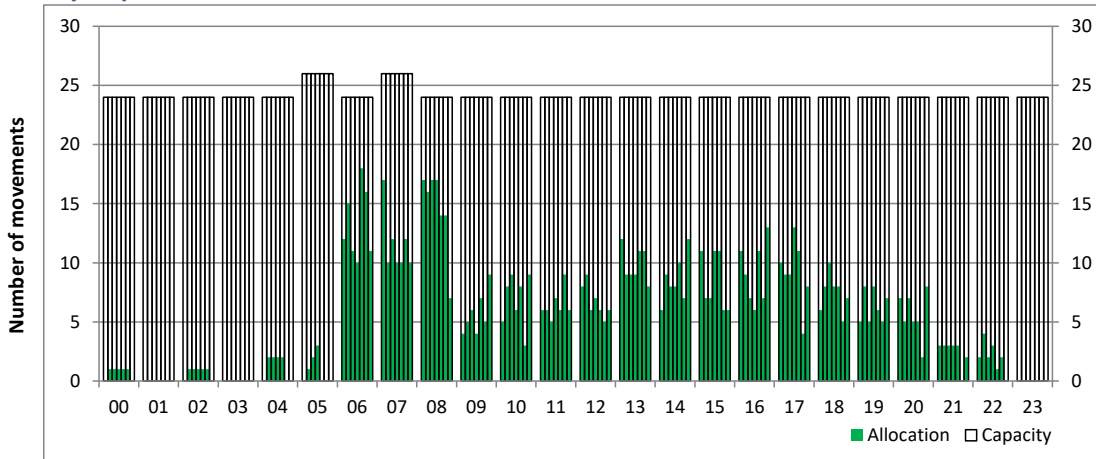
Time: UTC



Hour of day (24 hour format)

## Hourly Departure Allocation

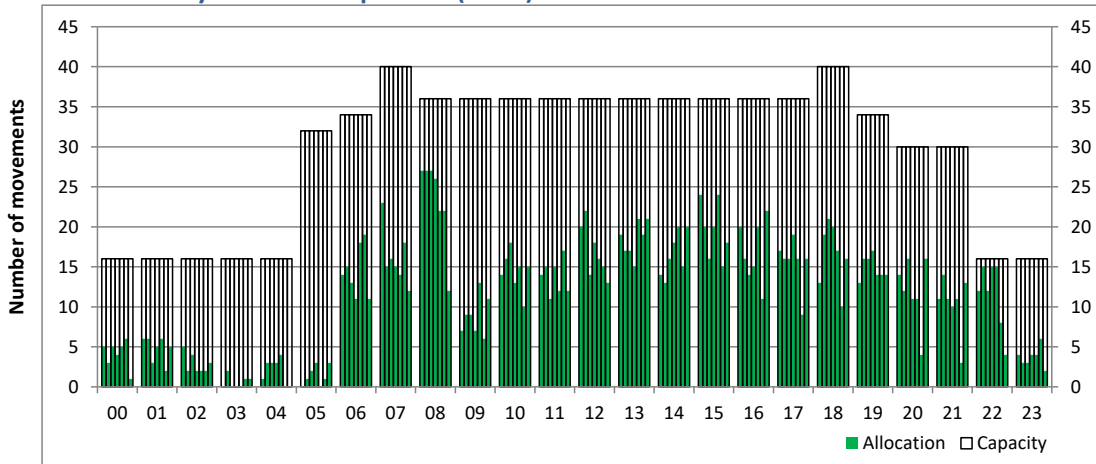
Time: UTC



Hour of day (24 hour format)

## Combined Hourly Arrival & Departure (Total) Allocation

Time: UTC



Hour of day (24 hour format)

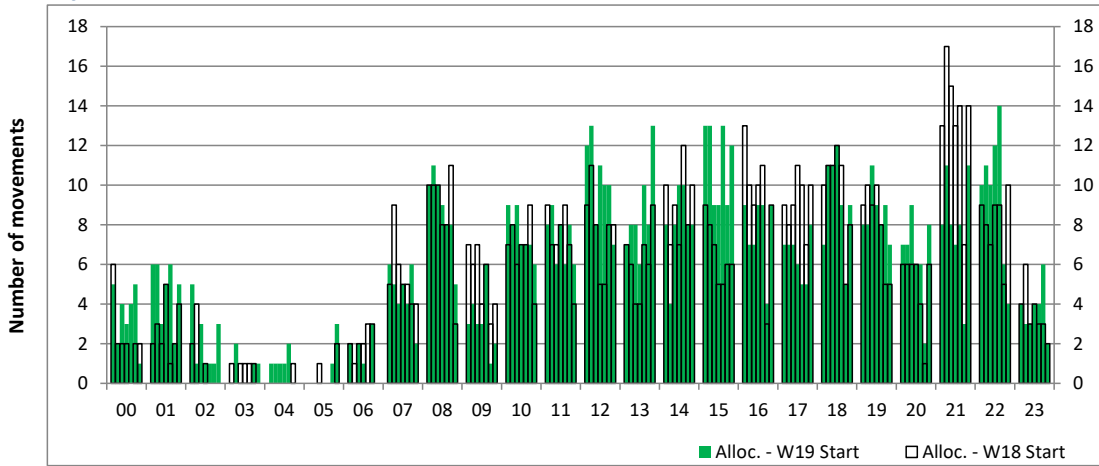
# Peak Week - Runway Allocation Comparison

Comparison of W19 Start vs. W18 Start



## Hourly Arrival Allocation

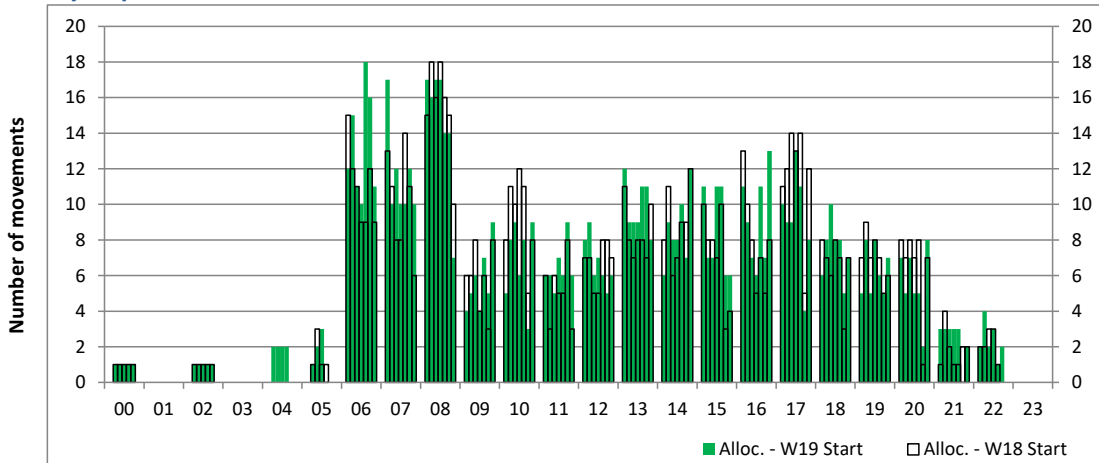
Time: UTC



Hour of day (24 hour format)

## Hourly Departure Allocation

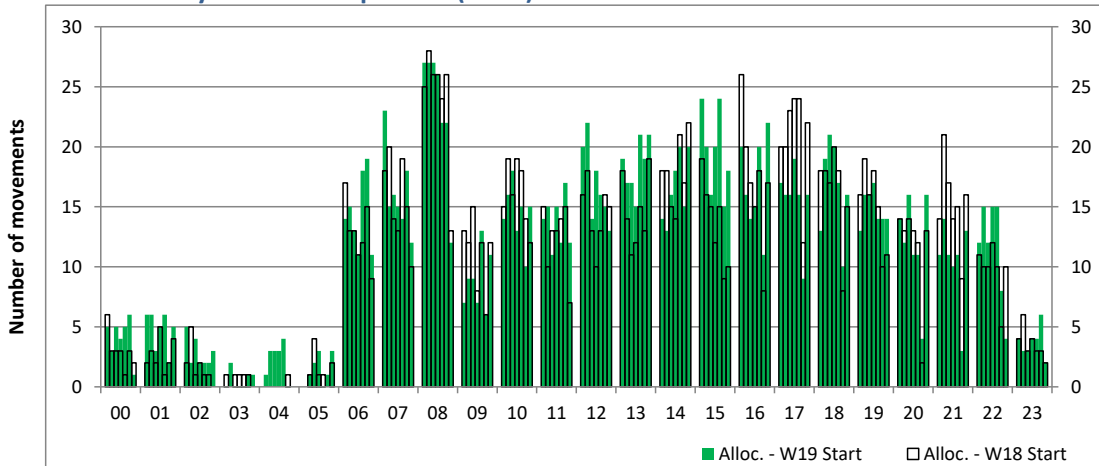
Time: UTC



Hour of day (24 hour format)

## Combined Hourly Arrival & Departure (Total) Allocation

Time: UTC



Hour of day (24 hour format)

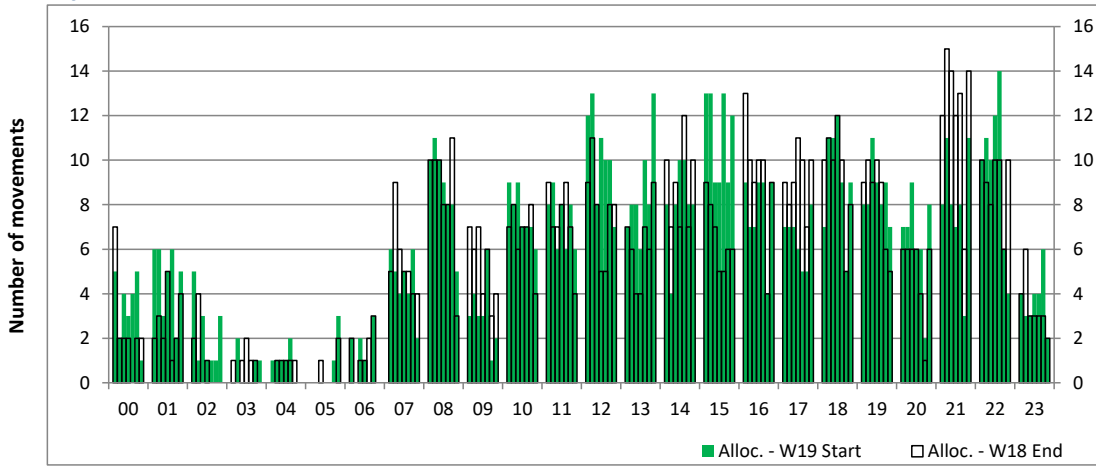
# Peak Week - Runway Allocation Comparison

Comparison of W19 Start vs. W18 End



## Hourly Arrival Allocation

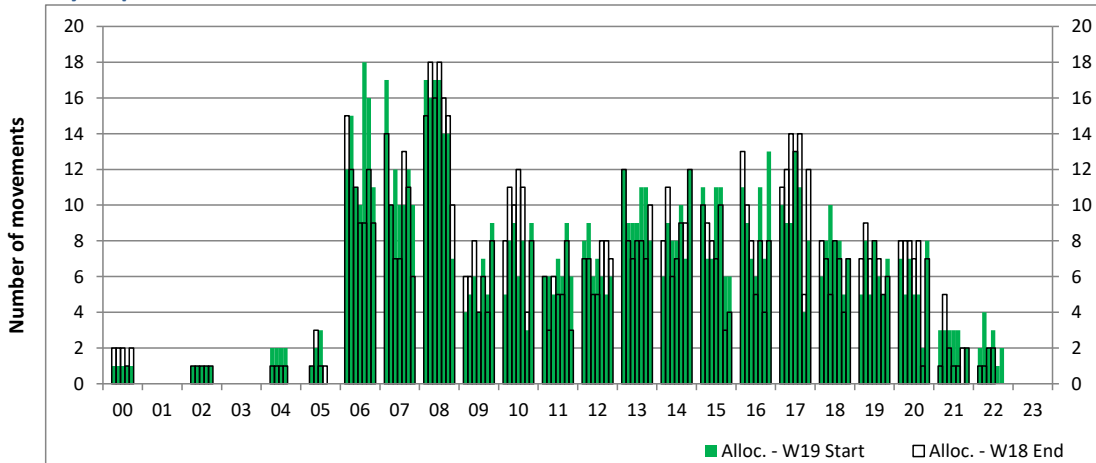
Time: UTC



Hour of day (24 hour format)

## Hourly Departure Allocation

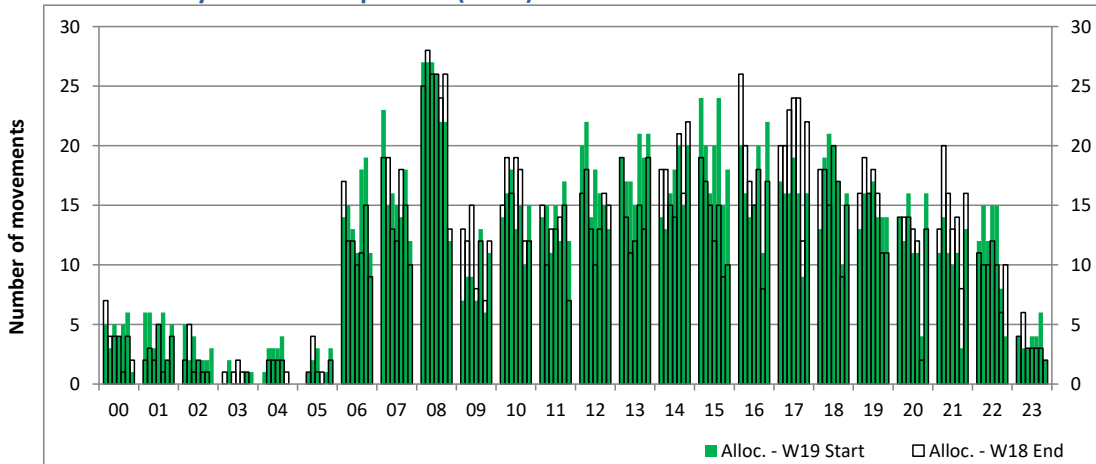
Time: UTC



Hour of day (24 hour format)

## Combined Hourly Arrival & Departure (Total) Allocation

Time: UTC



Hour of day (24 hour format)

# Peak Week - Passengers Histogram

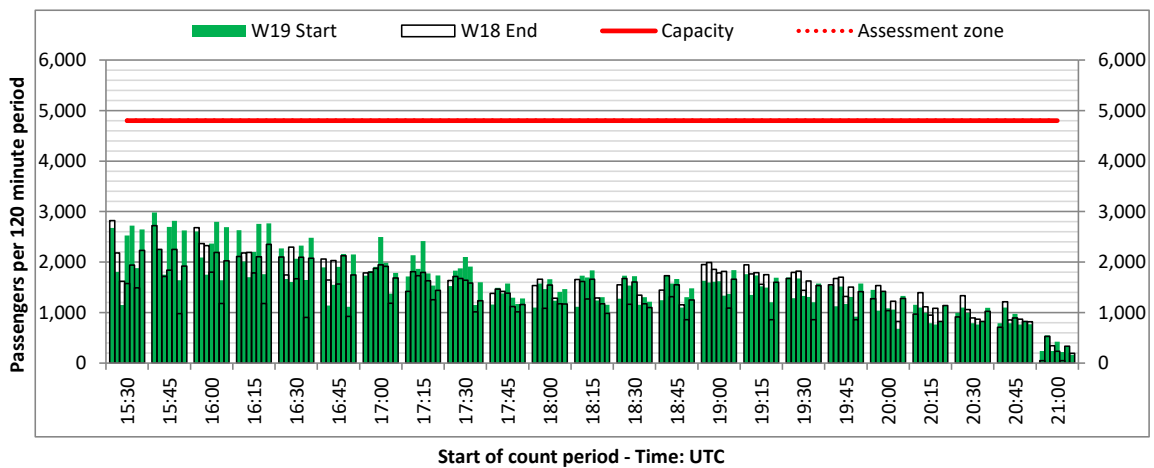
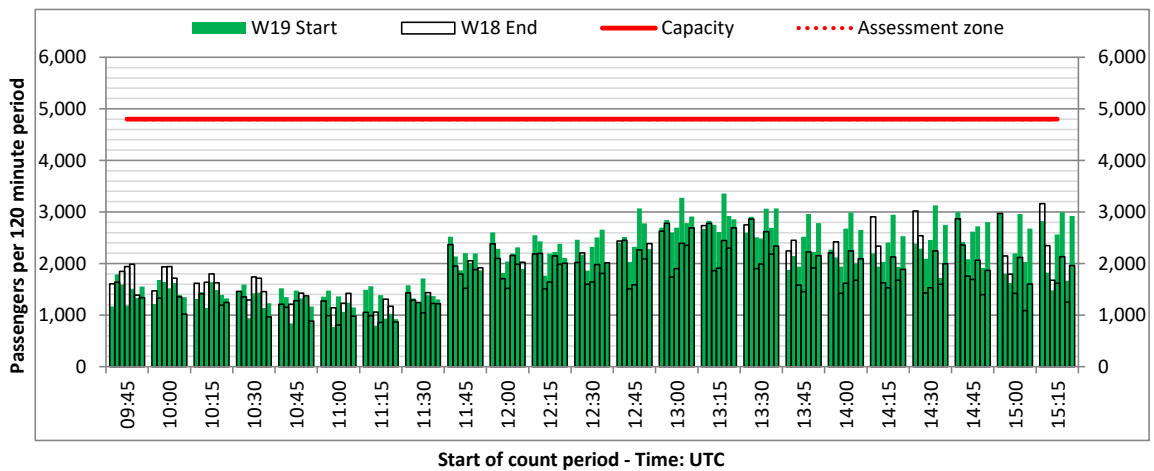
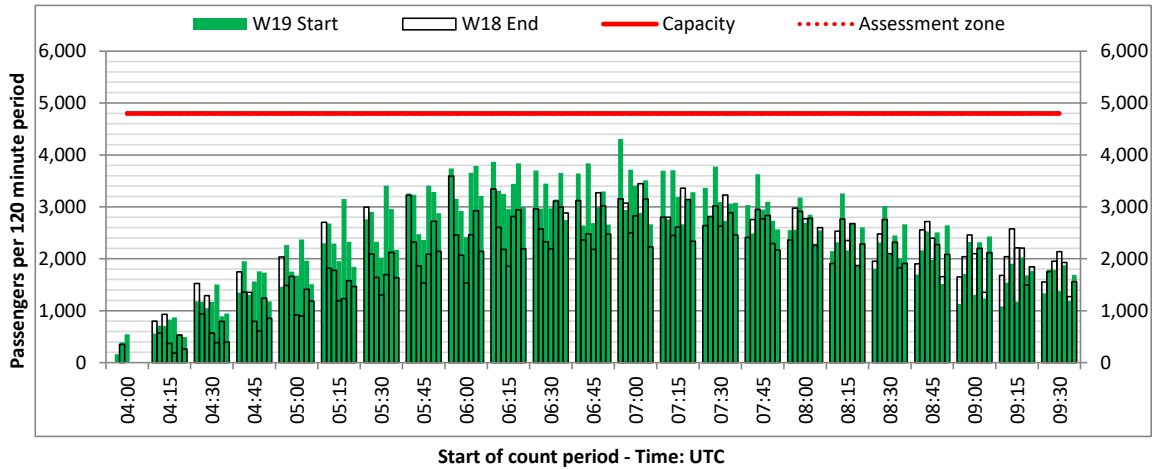
DEPARTURE - 120 minute count rolling every 15 mins (T120/15)



Terminals: All Terminals

Operators: All Operators

Days: 1234567



# Peak Week - Passengers Histogram

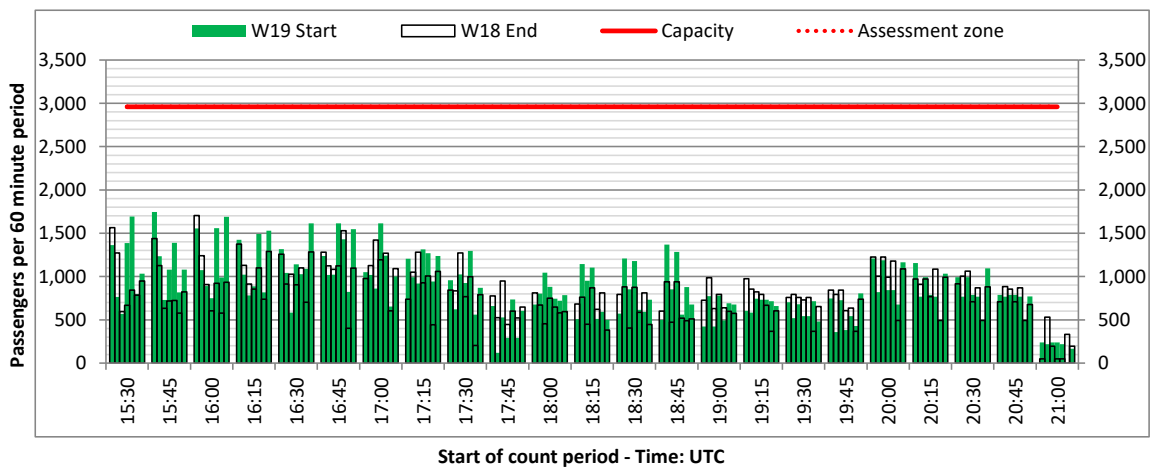
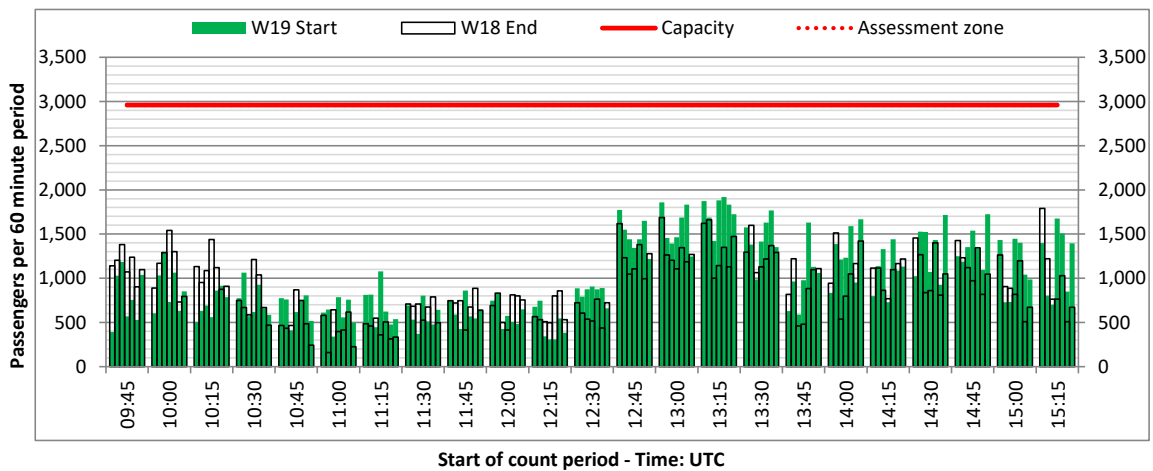
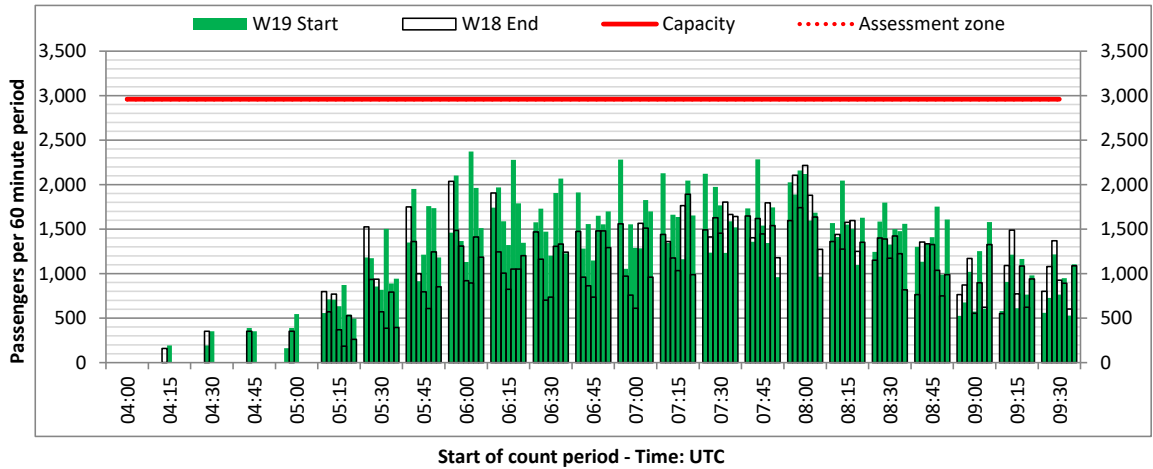
DEPARTURE - 60 minute count rolling every 15 mins (T60/15)



Terminals: All Terminals

Operators: All Operators

Days: 1234567





# Peak Week - Passengers Histogram

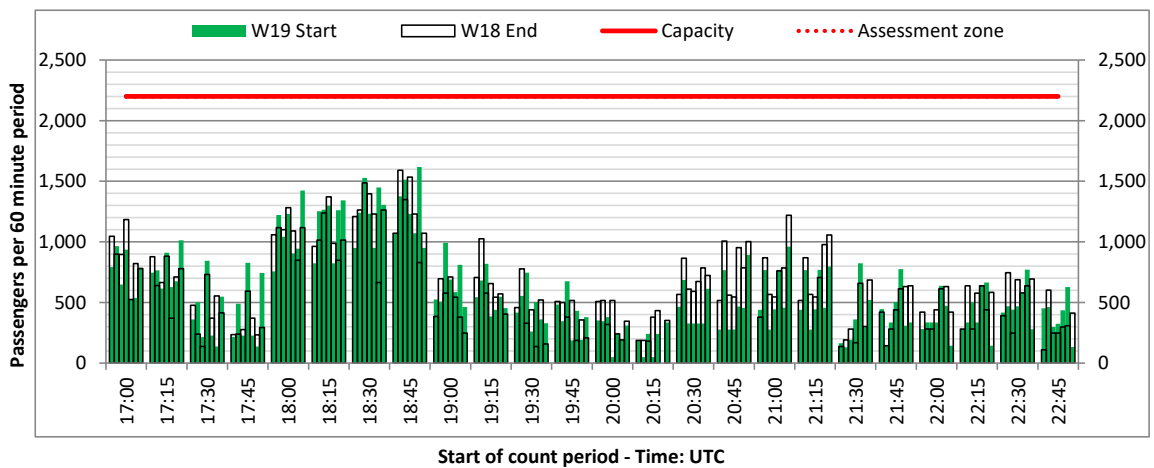
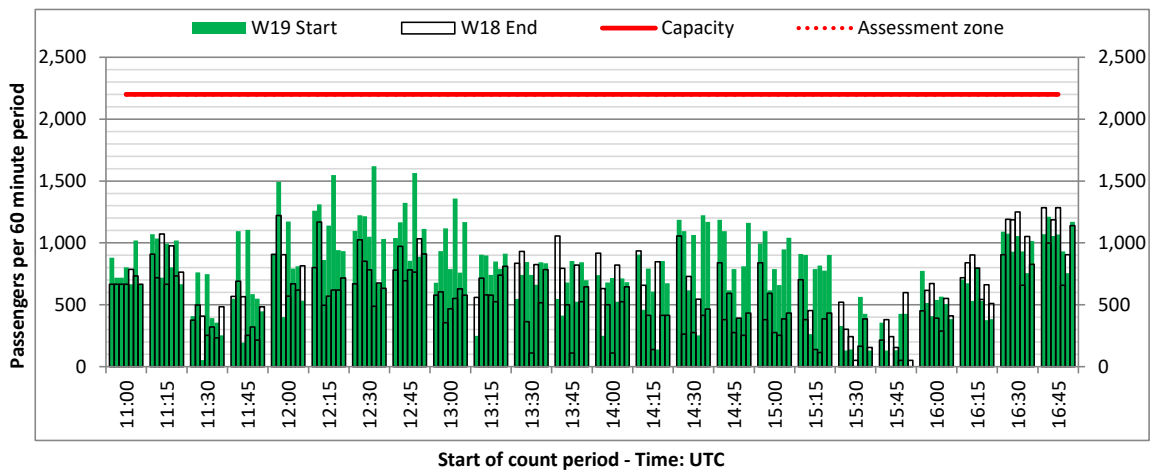
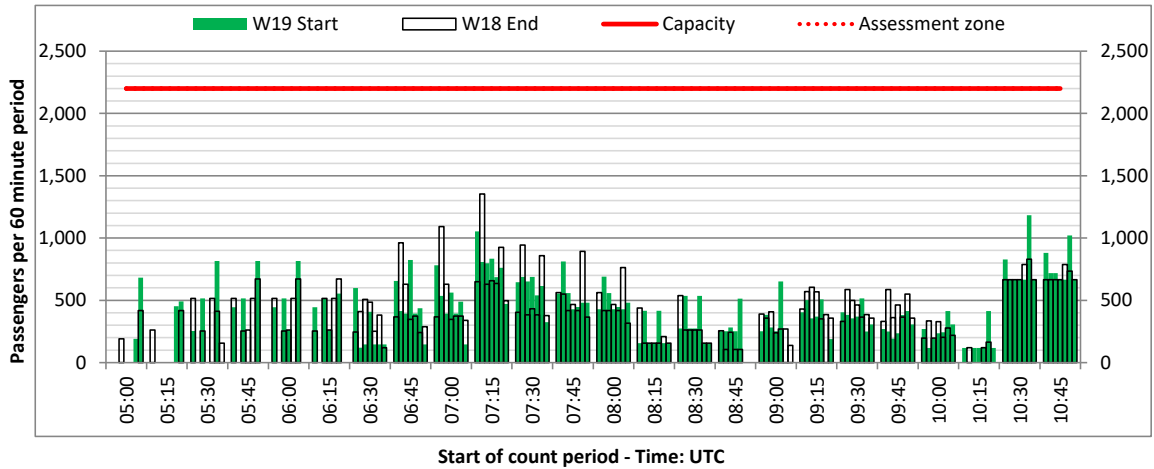
ARRIVAL - 60 minute count rolling every 15 mins (T60/15)



Terminals: 1I

Operators: All Operators

Days: 1234567



# Peak Week - Passengers Histogram

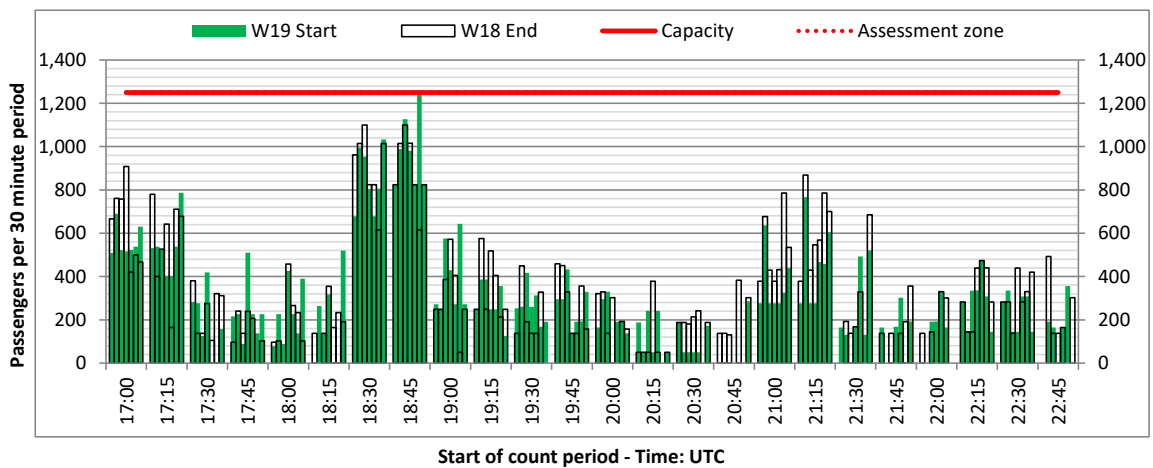
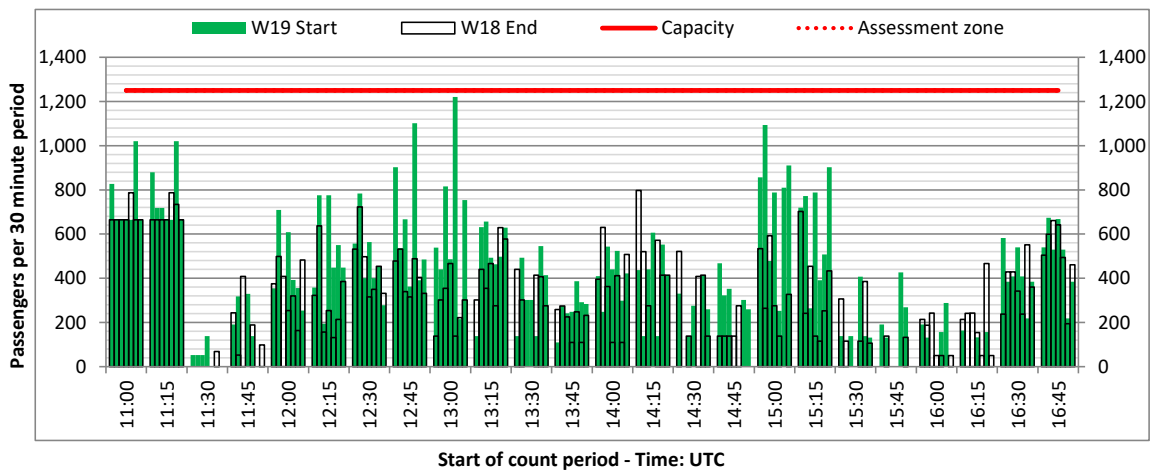
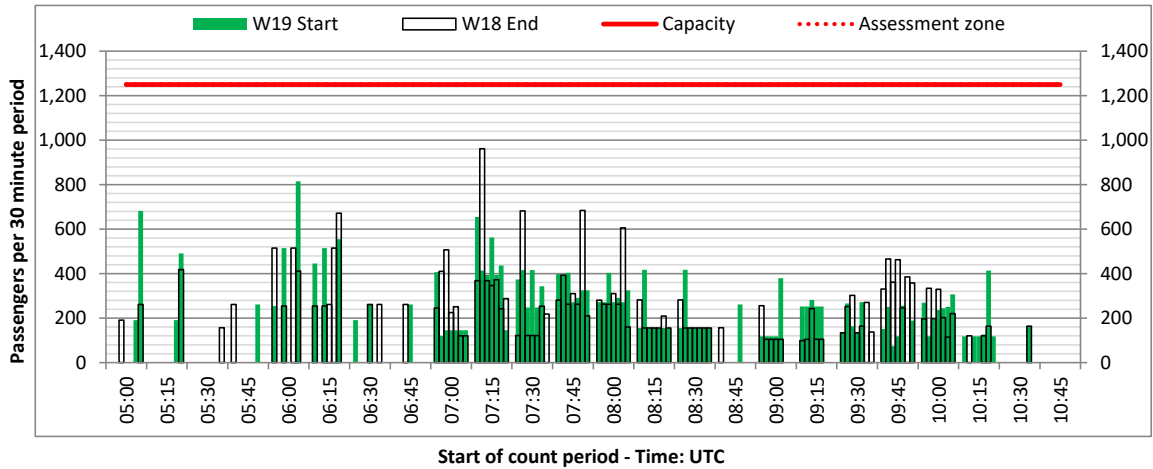
ARRIVAL - 30 minute count rolling every 15 mins (T30/15)



Terminals: 1I

Operators: All Operators

Days: 1234567



# Peak Week - Passengers Histogram

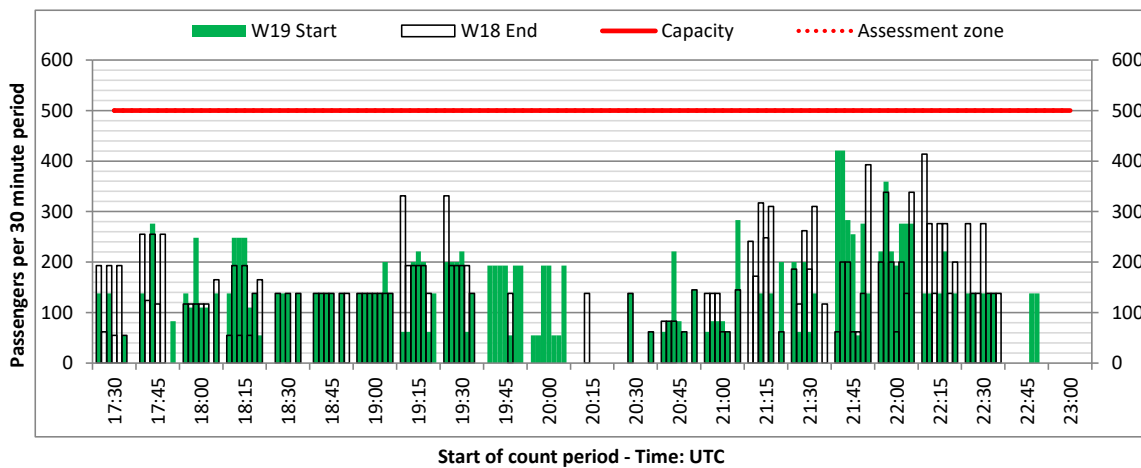
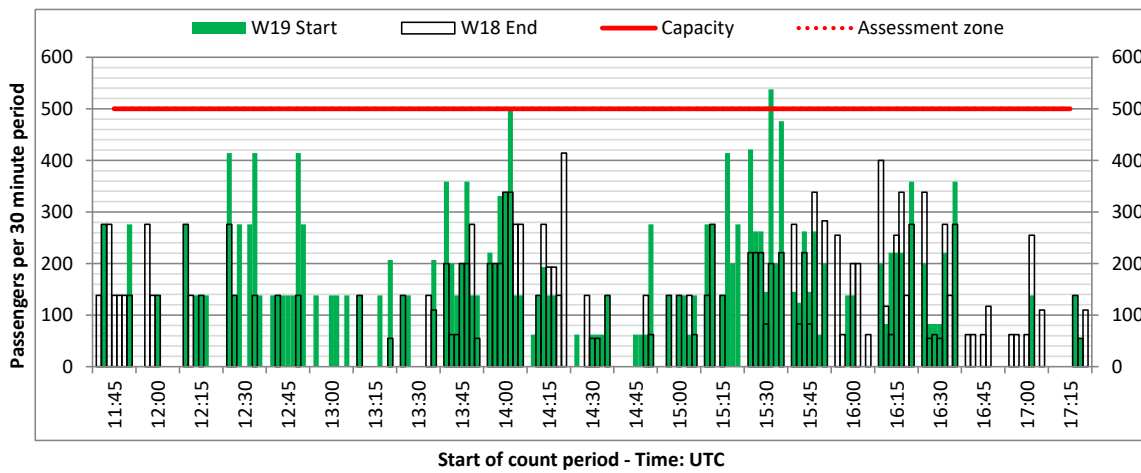
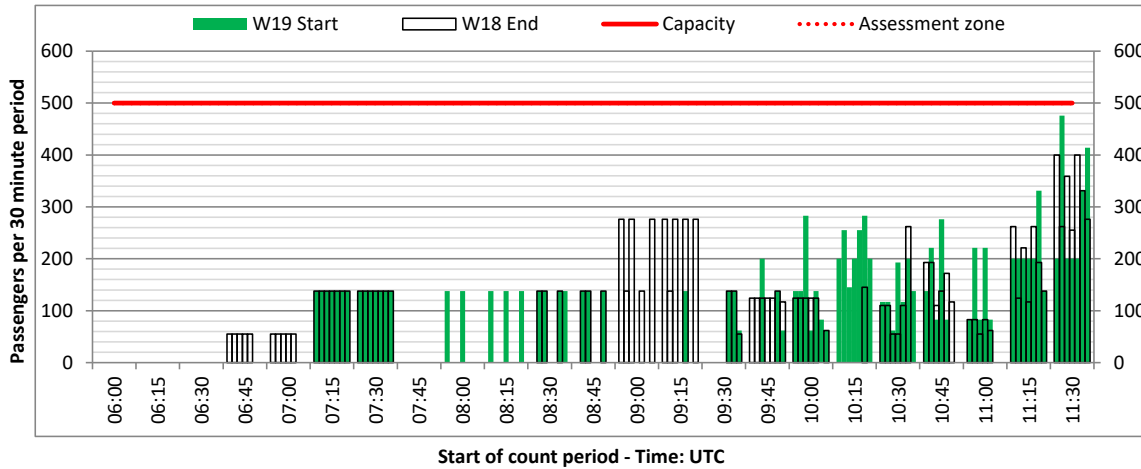
ARRIVAL - 30 minute count rolling every 15 mins (T30/15)



Terminals: 2I

Operators: All Operators

Days: 1234567



# Glossary



<b>Air Transport Movement (ATM)</b>	Any aircraft movement which is either a scheduled or chartered passenger or cargo flight.
<b>Common Travel Area (CTA)</b>	Origin or Destination is in Republic of Ireland or the Channel Islands.
<b>Demand</b>	Unconstrained demand before any schedule adjustments have been made.
<b>"Fill-in"</b>	These are gaps in a historic series of slots which the carrier requests to "Fill-in" at Initial Submissions - Fill-ins will be recognisably part of the historic series and will have the same flight details to qualify as a "Fill-in".
<b>Hist (SHL)</b>	Snapshot of historic schedule rolled over from end of the previous equivalent season - as advised to airlines in the SHLs.
<b>ICAO Size A</b>	Aircraft with wingspan between 0.00m - 14.99m.
<b>ICAO Size B</b>	Aircraft with wingspan between 15.00m - 23.99m.
<b>ICAO Size C</b>	Aircraft with wingspan between 24.00m - 35.99m.
<b>ICAO Size D</b>	Aircraft with wingspan between 36.00m - 51.99m.
<b>ICAO Size E</b>	Aircraft with wingspan between 52.00m - 64.99m.
<b>ICAO Size F</b>	Aircraft with wingspan between 65.00m - 80.00m.
<b>Init Coord</b>	Snapshot of schedule immediately after Initial Coordination is completed - as advised to airlines in the SALs.
<b>Passenger Air Transport Movement (PATM)</b>	Any aircraft movement which is either a scheduled or chartered passenger flight.
<b>Start</b>	Snapshot of schedule shortly before the start of the scheduling season (exact date given below where used).
<b>Time: Local</b>	Times shown are in LOCAL time for the airport/scheduling season.
<b>Time: UTC</b>	Times shown are in Universal Time Constant (UTC).

---

## Data snapshot descriptions

<b>W18 Start</b>	W18 schedule as cleared on Thu 11-Oct-18.
<b>W18 End</b>	W18 schedule as cleared on Sat 30-Mar-19.
<b>W19 Start</b>	W19 schedule as cleared on Wed 16-Oct-19.
<b>Peak Week</b>	Peak week for W18 is Mon 29-Oct-18 to Sun 04-Nov-18. Peak week for W19 is Mon 28-Oct-19 to Sun 03-Nov-19.

---

## For ACL use

	Airport-Season-Branch-Resource	From date	To date	Time
Full Season Rep 1	BHX-W18-SOS Report-Standard	Sun 28-Oct-2018	Sat 30-Mar-2019	UTC
Full Season Rep 2	BHX-W18-EOS Report-Standard	Sun 28-Oct-2018	Sat 30-Mar-2019	UTC
Full Season Rep 3	BHX-W19-SOS Report-Standard	Sun 27-Oct-2019	Sat 28-Mar-2020	UTC
	Airport-Season-Branch-Resource	From date	To date	Time
Peak Week Rep 1	BHX-W18-SOS Report-Standard	Mon 29-Oct-2018	Sun 04-Nov-2018	UTC
Peak Week Rep 2	BHX-W18-EOS Report-Standard	Mon 29-Oct-2018	Sun 04-Nov-2018	UTC
Peak Week Rep 3	BHX-W19-SOS Report-Standard	Mon 28-Oct-2019	Sun 03-Nov-2019	UTC

## Birmingham Airport W19 Start of Season Report

### W18 Start of Season vs W19 Start of Season

	OPERATOR	AIRPORT		W18		W19		SEATS +/-	ATMS +/-
				SEATS	ATMS	SEATS	ATMS		
OB	Blue Air Transport Aerian	LCA	Larnaca	24,948	132	0	0	-24,948	-132
		OTP	Bucharest Otopeni International	22,220	132	24,948	132	2,728	0
<b>OB Total</b>				<b>47,168</b>	<b>264</b>	<b>24,948</b>	<b>132</b>	<b>-22,220</b>	<b>-132</b>
3O	Air Arabia Maroc	AGA	Agadir Almassira	15,312	88	0	0	-15,312	-88
<b>3O Total</b>				<b>15,312</b>	<b>88</b>	<b>0</b>	<b>0</b>	<b>-15,312</b>	<b>-88</b>
AEG	Airest	DUB	Dublin	0	110	0	0	0	-110
		FKB	Karlsruhe Baden Baden Soellingen	0	110	0	0	0	-110
<b>AEG Total</b>				<b>0</b>	<b>220</b>	<b>0</b>	<b>0</b>	<b>0</b>	<b>-220</b>
AF	Air France	CDG	Paris Ch. De Gaulle	128,516	854	127,696	798	-820	-56
<b>AF Total</b>				<b>128,516</b>	<b>854</b>	<b>127,696</b>	<b>798</b>	<b>-820</b>	<b>-56</b>
AI	Air India	ATQ	Amritsar Raja Sansi	45,056	176	33,792	132	-11,264	-44
		DEL	Delhi Indira Gandhi International	33,792	133	33,792	132	0	-1
<b>AI Total</b>				<b>78,848</b>	<b>309</b>	<b>67,584</b>	<b>264</b>	<b>-11,264</b>	<b>-45</b>
BA	British Airways	AGP	Malaga	196	2	0	0	-196	-2
		FLR	Florence	196	2	0	0	-196	-2
		PMI	Palma Mallorca	490	5	0	0	-490	-5
<b>BA Total</b>				<b>882</b>	<b>9</b>	<b>0</b>	<b>0</b>	<b>-882</b>	<b>-9</b>
BE	Flybe	ABZ	Aberdeen Dyce	63,336	812	55,822	714	-7,514	-98
		AMS	Amsterdam-Schiphol	185,928	1,956	161,012	1,834	-24,916	-122
		BFS	Belfast International	156	5	0	0	-156	-5
		BHD	Belfast City Airport	146,584	1,873	127,388	1,616	-19,196	-257
		CDG	Paris Ch. De Gaulle	91,450	960	80,968	866	-10,482	-94
		CFU	Kerkyra I. Kapodistrias	352	5	0	0	-352	-5
		CMF	Chambery	7,836	72	2,816	32	-5,020	-40
		CWL	Cardiff-Wales	312	5	0	0	-312	-5
		DSA	Doncaster Sheffield	704	10	0	0	-704	-10
		DUS	Dusseldorf	81,320	1,015	64,324	758	-16,996	-257
		EDI	Edinburgh Turnhouse	154,830	1,985	133,840	1,675	-20,990	-310
		GCI	Guernsey	20,982	269	8,346	107	-12,636	-162
		GLA	Glasgow International	137,592	1,764	121,564	1,528	-16,028	-236
		GNB	Grenoble Saint Geoirs	1,180	10	352	4	-828	-6
		GVA	Geneva Geneve-Cointrin	2,816	32	2,816	32	0	0
		HAJ	Hanover	23,656	277	0	0	-23,656	-277
	HAM	Hamburg Fuhlsbuettel	21,632	274	0	0	-21,632	-274	
	ILD	Lleida Alguaire	2,464	28	0	0	-2,464	-28	
	INV	Inverness	24,180	310	14,700	180	-9,480	-130	

## Birmingham Airport W19 Start of Season Report

### W18 Start of Season vs W19 Start of Season

OPERATOR	AIRPORT		W18		W19		SEATS +/-	ATMS +/-
			SEATS	ATMS	SEATS	ATMS		
	IOM	Isle Of Man Ronaldsway	23,712	328	21,860	280	-1,852	-48
	JER	Jersey States	22,542	289	32,254	413	9,712	124
	LGW	London Gatwick	352	5	0	0	-352	-5
	LYS	Lyon	23,704	268	5,500	65	-18,204	-203
	MXP	Milan Malpensa	39,492	444	6,336	72	-33,156	-372
	NCE	Nice Cote D'Azur	704	10	0	0	-704	-10
	NOC	Knock International	17,144	218	12,336	152	-4,808	-66
	NQY	Newquay St Mawgan	3,920	50	508	6	-3,412	-44
	NTE	Nantes Atlantique	3,902	49	684	8	-3,218	-41
	STR	Stuttgart Echterdingen	42,240	480	38,024	428	-4,216	-52
	SZG	Salzburg W.A. Mozart	624	10	0	0	-624	-10
	TLS	Toulouse Blagnac	440	5	1,760	20	1,320	15
	TXL	Berlin Tegel	37,632	424	7,920	90	-29,712	-334
<b>BE Total</b>			<b>1,183,718</b>	<b>14,242</b>	<b>901,130</b>	<b>10,880</b>	<b>-282,588</b>	<b>-3,362</b>
<b>CXI</b>	<b>Corendon Airlines</b>	<b>RAK Marrakech Menara</b>	<b>2,646</b>	<b>14</b>	<b>189</b>	<b>1</b>	<b>-2,457</b>	<b>-13</b>
<b>CXI Total</b>			<b>2,646</b>	<b>14</b>	<b>189</b>	<b>1</b>	<b>-2,457</b>	<b>-13</b>
<b>EI</b>	<b>Aer Lingus</b>	<b>DUB Dublin</b>	<b>216,132</b>	<b>1,520</b>	<b>210,304</b>	<b>1,442</b>	<b>-5,828</b>	<b>-78</b>
		<b>ORK Cork</b>	<b>40,464</b>	<b>562</b>	<b>42,260</b>	<b>588</b>	<b>1,796</b>	<b>26</b>
		<b>SNN Shannon</b>	<b>21,672</b>	<b>301</b>	<b>20,252</b>	<b>282</b>	<b>-1,420</b>	<b>-19</b>
<b>EI Total</b>			<b>278,268</b>	<b>2,383</b>	<b>272,816</b>	<b>2,312</b>	<b>-5,452</b>	<b>-71</b>
<b>EK</b>	<b>Emirates</b>	<b>DXB Dubai</b>	<b>373,220</b>	<b>616</b>	<b>378,840</b>	<b>616</b>	<b>5,620</b>	<b>0</b>
<b>EK Total</b>			<b>373,220</b>	<b>616</b>	<b>378,840</b>	<b>616</b>	<b>5,620</b>	<b>0</b>
<b>ENT</b>	<b>Enter Air - Polish Charter</b>	<b>BJL Banjul Yundum International</b>	<b>0</b>	<b>0</b>	<b>5,670</b>	<b>30</b>	<b>5,670</b>	<b>30</b>
		<b>CMF Chambery</b>	<b>0</b>	<b>0</b>	<b>5,670</b>	<b>30</b>	<b>5,670</b>	<b>30</b>
		<b>ENF Enontekio</b>	<b>2,646</b>	<b>17</b>	<b>2,646</b>	<b>20</b>	<b>0</b>	<b>3</b>
		<b>FCO Rome Fiumicino</b>	<b>0</b>	<b>0</b>	<b>378</b>	<b>2</b>	<b>378</b>	<b>2</b>
		<b>HRG Hurghada</b>	<b>0</b>	<b>0</b>	<b>5,670</b>	<b>30</b>	<b>5,670</b>	<b>30</b>
		<b>LGW London Gatwick</b>	<b>0</b>	<b>0</b>	<b>189</b>	<b>16</b>	<b>189</b>	<b>16</b>
		<b>NCL Newcastle Airport</b>	<b>0</b>	<b>0</b>	<b>189</b>	<b>1</b>	<b>189</b>	<b>1</b>
		<b>PJA Greater Peoria</b>	<b>378</b>	<b>3</b>	<b>378</b>	<b>2</b>	<b>0</b>	<b>-1</b>
<b>ENT Total</b>			<b>3,024</b>	<b>20</b>	<b>20,790</b>	<b>131</b>	<b>17,766</b>	<b>111</b>
<b>ENZ</b>	<b>Jota Aviation</b>	<b>BTS Bratislava Ivanka</b>	<b>0</b>	<b>0</b>	<b>95</b>	<b>1</b>	<b>95</b>	<b>1</b>
		<b>SEN Southend</b>	<b>0</b>	<b>0</b>	<b>1,425</b>	<b>31</b>	<b>1,425</b>	<b>31</b>
		<b>STN London Stansted</b>	<b>0</b>	<b>0</b>	<b>0</b>	<b>1</b>	<b>0</b>	<b>1</b>
		<b>TSF Venice Treviso</b>	<b>0</b>	<b>0</b>	<b>190</b>	<b>3</b>	<b>190</b>	<b>3</b>
<b>ENZ Total</b>			<b>0</b>	<b>0</b>	<b>1,710</b>	<b>36</b>	<b>1,710</b>	<b>36</b>

## Birmingham Airport W19 Start of Season Report

### W18 Start of Season vs W19 Start of Season

OPERATOR	AIRPORT	W18		W19		SEATS +/-	ATMS +/-		
		SEATS	ATMS	SEATS	ATMS				
EW	Eurowings	DUS	Dusseldorf	154,704	1,012	145,656	934	-9,048	-78
		VIE	Vienna	31,680	176	35,280	196	3,600	20
<b>EW Total</b>		<b>186,384</b>	<b>1,188</b>	<b>180,936</b>	<b>1,130</b>	<b>-5,448</b>	<b>-58</b>		
EZY	Easyjet Airline	BFS	Belfast International	142,068	868	135,288	788	-6,780	-80
		BHX	Birmingham International	312	2	372	2	60	0
		GVA	Geneva Geneve-Cointrin	105,576	600	79,992	452	-25,584	-148
<b>EZY Total</b>		<b>247,956</b>	<b>1,470</b>	<b>215,652</b>	<b>1,242</b>	<b>-32,304</b>	<b>-228</b>		
FEG	FlyEgypt	HRG	Hurghada	0	0	2,604	14	2,604	14
<b>FEG Total</b>		<b>0</b>	<b>0</b>	<b>2,604</b>	<b>14</b>	<b>2,604</b>	<b>14</b>		
FHM	Freebird Airlines	DBV	Dubrovnik	0	0	2,520	14	2,520	14
<b>FHM Total</b>		<b>0</b>	<b>0</b>	<b>2,520</b>	<b>14</b>	<b>2,520</b>	<b>14</b>		
FR	Ryanair	ACE	Lanzarote	28,350	150	22,302	118	-6,048	-32
		AGP	Malaga	53,676	284	53,298	282	-378	-2
		ALC	Alicante	58,968	312	61,614	326	2,646	14
		BCN	Barcelona	57,834	306	57,834	306	0	0
		BTS	Bratislava Ivanka	25,704	136	27,216	144	1,512	8
		BZG	Bydgoszcz	25,704	136	26,082	138	378	2
		CFU	Kerkyra I. Kapodistrias	0	0	1,134	6	1,134	6
		CHQ	Chania Souda	0	0	756	4	756	4
		DUB	Dublin	342,846	1,814	321,300	1,700	-21,546	-114
		FAO	Faro	24,948	132	26,460	140	1,512	8
		FUE	Fuerteventura	16,254	86	16,632	88	378	2
		GDN	Gdansk Rebiechowo	18,144	96	18,144	96	0	0
		IBZ	Ibiza	0	0	1,134	6	1,134	6
		KRK	Krakow J. Paul II Balice International	18,144	96	26,082	138	7,938	42
		KTW	Katowice Pyrzowice	16,632	88	17,766	94	1,134	6
		LPA	Las Palmas De Gran Canaria	17,010	90	9,072	48	-7,938	-42
		MAD	Madrid Barajas	33,264	176	32,508	172	-756	-4
MJV	Murcia San Javier	18,144	96	0	0	-18,144	-96		
MLA	Malta Luqa	24,948	132	25,704	136	756	4		
MXP	Milan Malpensa	0	0	11,718	62	11,718	62		
OPO	Porto	0	0	17,766	94	17,766	94		
PMI	Palma Mallorca	1,512	8	1,890	10	378	2		
RMU	Murcia	0	0	18,900	100	18,900	100		
SOF	Sofia Vrazhdebna	26,082	138	25,326	134	-756	-4		
TFS	Tenerife Sur Reina Sofia	34,398	182	34,398	182	0	0		

## Birmingham Airport W19 Start of Season Report

### W18 Start of Season vs W19 Start of Season

OPERATOR	AIRPORT		W18		W19		SEATS +/-	ATMS +/-
			SEATS	ATMS	SEATS	ATMS		
	VNO	Vilnius	16,254	86	0	0	-16,254	-86
	VRN	Verona	16,254	86	9,450	50	-6,804	-36
	WMI	Modlin	26,082	138	25,704	136	-378	-2
<b>FR Total</b>			<b>901,152</b>	<b>4,768</b>	<b>890,190</b>	<b>4,710</b>	<b>-10,962</b>	<b>-58</b>
<b>FX</b>	<b>Fedex</b>	<b>BFS</b>	<b>Belfast International</b>	0	176	0	0	-176
		CDG	Paris Ch. De Gaulle	0	176	0	160	-16
		MAN	Manchester International	0	176	0	160	-16
<b>FX Total</b>				<b>0</b>	<b>528</b>	<b>0</b>	<b>320</b>	<b>-208</b>
<b>I2</b>	<b>Iberia Express</b>	<b>MAD</b>	<b>Madrid Barajas</b>	22,932	134	23,760	132	828
<b>I2 Total</b>				<b>22,932</b>	<b>134</b>	<b>23,760</b>	<b>132</b>	<b>828</b>
<b>KL</b>	<b>Klm Royal Dutch Airlines</b>	<b>AMS</b>	<b>Amsterdam-Schiphol</b>	203,878	1,278	212,058	1,372	8,180
<b>KL Total</b>				<b>203,878</b>	<b>1,278</b>	<b>212,058</b>	<b>1,372</b>	<b>94</b>
<b>LH</b>	<b>Lufthansa</b>	<b>FRA</b>	<b>Frankfurt International</b>	192,782	1,232	196,078	1,150	3,296
		MUC	Munich Franz Josef Strauss	119,038	842	129,492	816	10,454
<b>LH Total</b>				<b>311,820</b>	<b>2,074</b>	<b>325,570</b>	<b>1,966</b>	<b>-108</b>
<b>LM</b>	<b>Loganair</b>	<b>BOH</b>	<b>Bournemouth International</b>	0	0	196	4	196
		BRS	Bristol	0	0	0	9	9
		LGW	London Gatwick	0	0	196	4	196
		NCL	Newcastle Airport	0	0	49	1	49
		NWI	Norwich	0	0	98	2	98
		SOU	Southampton Eastleigh	0	0	98	2	98
<b>LM Total</b>				<b>0</b>	<b>0</b>	<b>637</b>	<b>22</b>	<b>637</b>
<b>LS</b>	<b>Jet2.Com</b>	<b>ACE</b>	<b>Lanzarote</b>	44,793	237	65,925	349	21,132
		ADB	Izmir Adnan Menderes	0	0	378	2	378
		AGP	Malaga	38,996	206	46,618	246	7,622
		ALC	Alicante	55,188	292	59,724	318	4,536
		ARN	Stockholm Arlanda	378	2	0	0	-378
		AYT	Antalya	11,151	59	25,272	134	14,121
		BIO	Bilbao	0	0	378	2	378
		BJV	Bodrum. Milas Airport	378	2	378	2	0
		BOD	Bordeaux Airport	0	0	378	2	378
		BUD	Budapest Ferihegy	0	0	15,498	82	15,498
		CFU	Kerkyra I. Kapodistrias	0	0	378	2	378
		CHQ	Chania Souda	0	0	378	2	378
		DBV	Dubrovnik	756	4	756	4	0
		DLM	Dalaman	1,512	8	3,930	20	2,418



## Birmingham Airport W19 Start of Season Report

### W18 Start of Season vs W19 Start of Season

OPERATOR	AIRPORT	W18		W19		SEATS +/-	ATMS +/-
		SEATS	ATMS	SEATS	ATMS		
ENF	Enontekio	0	0	378	2	378	2
FAO	Faro	21,546	114	31,814	168	10,268	54
FCO	Rome Fiumicino	23,058	123	26,082	140	3,024	17
FNC	Funchal	16,254	86	17,388	92	1,134	6
FUE	Fuerteventura	18,395	97	32,283	171	13,888	74
GNB	Grenoble Saint Geoirs	10,962	58	16,632	88	5,670	30
GRO	Gerona Costa Brava	1,134	6	1,134	6	0	0
GVA	Geneva Geneve-Cointrin	14,364	76	14,364	76	0	0
HAJ	Hanover	0	0	378	3	378	3
HER	Heraklion N. Kazantzakis Apt.	1,701	9	2,646	14	945	5
IBZ	Ibiza	2,268	12	2,392	12	124	0
INN	Innsbruck Kranebitten	0	0	5,670	30	5,670	30
IVL	Ivalo	5,481	31	0	0	-5,481	-31
KAO	Kuusamo	756	6	0	0	-756	-6
KEF	Keflavik International	756	4	1,890	11	1,134	7
KGS	Kos	0	0	1,134	6	1,134	6
KRK	Krakow J. Paul II Balice International	16,632	88	16,632	88	0	0
LCA	Larnaca	1,323	7	3,402	19	2,079	12
LEI	Almeria	378	2	756	4	378	2
LPA	Las Palmas De Gran Canaria	21,388	113	36,666	194	15,278	81
MAH	Menorca	1,134	6	2,250	12	1,116	6
MLA	Malta Luqa	4,158	22	3,780	20	-378	-2
MPL	Montpellier Frejorgues	0	0	378	2	378	2
NAP	Naples	1,134	6	1,134	6	0	0
NCE	Nice Cote D'Azur	0	0	756	4	756	4
PFO	Paphos International	12,096	64	19,656	104	7,560	40
PMI	Palma Mallorca	13,670	72	17,683	93	4,013	21
PRG	Prague Ruzyne	16,632	88	20,412	108	3,780	20
PSA	Florence Gal Galilei	378	2	0	0	-378	-2
REU	Reus	756	4	756	4	0	0
RHO	Rhodes Diagoras Airport	756	4	1,890	10	1,134	6
SPU	Split	756	4	756	4	0	0
SZG	Salzburg W.A. Mozart	6,426	34	6,426	34	0	0
TFS	Tenerife Sur Reina Sofia	64,700	342	96,820	512	32,120	170
TLS	Toulouse Blagnac	378	2	0	0	-378	-2
TRN	Turin Citta Di Torino	10,206	54	10,206	54	0	0

## Birmingham Airport W19 Start of Season Report

### W18 Start of Season vs W19 Start of Season

OPERATOR	AIRPORT		W18		W19		SEATS +/-	ATMS +/-
			SEATS	ATMS	SEATS	ATMS		
	TSR	Timisoara	378	2	0	0	-378	-2
	VCE	Venice Marco Polo	6,048	32	7,560	40	1,512	8
	VIE	Vienna	2,268	12	4,914	26	2,646	14
<b>LS Total</b>			<b>451,422</b>	<b>2,392</b>	<b>627,009</b>	<b>3,322</b>	<b>175,587</b>	<b>930</b>
<b>LX</b>	<b>Swiss International Air Lines</b>	<b>ZRH Zurich</b>	<b>71,442</b>	<b>558</b>	<b>68,268</b>	<b>550</b>	<b>-3,174</b>	<b>-8</b>
<b>LX Total</b>			<b>71,442</b>	<b>558</b>	<b>68,268</b>	<b>550</b>	<b>-3,174</b>	<b>-8</b>
<b>MLT</b>	<b>Maleth-Aero</b>	<b>FCO Rome Fiumicino</b>	<b>0</b>	<b>0</b>	<b>148</b>	<b>2</b>	<b>148</b>	<b>2</b>
<b>MLT Total</b>			<b>0</b>	<b>0</b>	<b>148</b>	<b>2</b>	<b>148</b>	<b>2</b>
<b>MT</b>	<b>Thomas Cook</b>	<b>ACE Lanzarote</b>	<b>31,500</b>	<b>153</b>	<b>25,660</b>	<b>117</b>	<b>-5,840</b>	<b>-36</b>
		<b>AYT Antalya</b>	<b>9,720</b>	<b>50</b>	<b>14,360</b>	<b>66</b>	<b>4,640</b>	<b>16</b>
		<b>BJL Banjul Yundum International</b>	<b>20,020</b>	<b>91</b>	<b>18,260</b>	<b>83</b>	<b>-1,760</b>	<b>-8</b>
		<b>BJV Bodrum. Milas Airport</b>	<b>0</b>	<b>0</b>	<b>220</b>	<b>1</b>	<b>220</b>	<b>1</b>
		<b>CFU Kerkyra I. Kapodistrias</b>	<b>180</b>	<b>2</b>	<b>720</b>	<b>4</b>	<b>540</b>	<b>2</b>
		<b>CIY</b>	<b>360</b>	<b>2</b>	<b>0</b>	<b>0</b>	<b>-360</b>	<b>-2</b>
		<b>DLM Dalaman</b>	<b>2,920</b>	<b>14</b>	<b>2,120</b>	<b>10</b>	<b>-800</b>	<b>-4</b>
		<b>DUB Dublin</b>	<b>180</b>	<b>2</b>	<b>0</b>	<b>0</b>	<b>-180</b>	<b>-2</b>
		<b>ENF Enontekio</b>	<b>720</b>	<b>4</b>	<b>440</b>	<b>2</b>	<b>-280</b>	<b>-2</b>
		<b>FAO Faro</b>	<b>0</b>	<b>0</b>	<b>220</b>	<b>2</b>	<b>220</b>	<b>2</b>
		<b>FUE Fuerteventura</b>	<b>19,740</b>	<b>99</b>	<b>19,720</b>	<b>90</b>	<b>-20</b>	<b>-9</b>
		<b>GLA Glasgow International</b>	<b>0</b>	<b>3</b>	<b>220</b>	<b>2</b>	<b>220</b>	<b>-1</b>
		<b>GNB Grenoble Saint Geoirs</b>	<b>5,400</b>	<b>31</b>	<b>6,600</b>	<b>30</b>	<b>1,200</b>	<b>-1</b>
		<b>GVA Geneva Geneve-Cointrin</b>	<b>3,080</b>	<b>14</b>	<b>0</b>	<b>0</b>	<b>-3,080</b>	<b>-14</b>
		<b>HAJ Hanover</b>	<b>0</b>	<b>0</b>	<b>440</b>	<b>2</b>	<b>440</b>	<b>2</b>
		<b>HER Heraklion N. Kazantzakis Apt.</b>	<b>440</b>	<b>2</b>	<b>800</b>	<b>4</b>	<b>360</b>	<b>2</b>
		<b>HRG Hurghada</b>	<b>39,160</b>	<b>178</b>	<b>47,740</b>	<b>217</b>	<b>8,580</b>	<b>39</b>
		<b>IBZ Ibiza</b>	<b>440</b>	<b>2</b>	<b>0</b>	<b>0</b>	<b>-440</b>	<b>-2</b>
		<b>IVL Ivalo</b>	<b>900</b>	<b>5</b>	<b>1,620</b>	<b>11</b>	<b>720</b>	<b>6</b>
		<b>KGS Kos</b>	<b>440</b>	<b>2</b>	<b>880</b>	<b>4</b>	<b>440</b>	<b>2</b>
		<b>KRK Krakow J. Paul Ii Balice International</b>	<b>0</b>	<b>0</b>	<b>880</b>	<b>4</b>	<b>880</b>	<b>4</b>
		<b>LCA Larnaca</b>	<b>720</b>	<b>4</b>	<b>1,160</b>	<b>6</b>	<b>440</b>	<b>2</b>
		<b>LEI Almeria</b>	<b>440</b>	<b>2</b>	<b>440</b>	<b>2</b>	<b>0</b>	<b>0</b>
		<b>LPA Las Palmas De Gran Canaria</b>	<b>3,400</b>	<b>18</b>	<b>1,720</b>	<b>8</b>	<b>-1,680</b>	<b>-10</b>
		<b>LPL Liverpool International</b>	<b>0</b>	<b>2</b>	<b>0</b>	<b>0</b>	<b>0</b>	<b>-2</b>
		<b>MAH Menorca</b>	<b>360</b>	<b>3</b>	<b>360</b>	<b>2</b>	<b>0</b>	<b>-1</b>
		<b>NBE Enfidha</b>	<b>5,500</b>	<b>25</b>	<b>4,840</b>	<b>22</b>	<b>-660</b>	<b>-3</b>
		<b>OPO Porto</b>	<b>0</b>	<b>0</b>	<b>220</b>	<b>1</b>	<b>220</b>	<b>1</b>

## Birmingham Airport W19 Start of Season Report

### W18 Start of Season vs W19 Start of Season

OPERATOR	AIRPORT	W18		W19		SEATS +/-	ATMS +/-
		SEATS	ATMS	SEATS	ATMS		
	PFO Paphos International	360	2	0	0	-360	-2
	PMI Palma Mallorca	6,340	32	3,960	18	-2,380	-14
	RHO Rhodes Diagoras Airport	660	3	660	3	0	0
	RMF Marsa Alam	9,680	44	660	3	-9,020	-41
	RVN Rovaniemi	3,300	15	1,320	6	-1,980	-9
	TFS Tenerife Sur Reina Sofia	39,600	200	36,980	169	-2,620	-31
	ZTH Zakynthos Is	1,320	6	1,760	8	440	2
<b>MT Total</b>		<b>206,880</b>	<b>1,010</b>	<b>194,980</b>	<b>897</b>	<b>-11,900</b>	<b>-113</b>
MTL Raf Avia	FRA Frankfurt International	0	220	0	220	0	0
<b>MTL Total</b>		<b>0</b>	<b>220</b>	<b>0</b>	<b>220</b>	<b>0</b>	<b>0</b>
OE Lauda Motion	VIE Vienna	0	0	23,400	130	23,400	130
<b>OE Total</b>		<b>0</b>	<b>0</b>	<b>23,400</b>	<b>130</b>	<b>23,400</b>	<b>130</b>
OK Csa Czech Airlines	PRG Prague Ruzyne	24,428	170	1,890	10	-22,538	-160
<b>OK Total</b>		<b>24,428</b>	<b>170</b>	<b>1,890</b>	<b>10</b>	<b>-22,538</b>	<b>-160</b>
OS Austrian Airlines	INN Innsbruck Kranebitten	5,220	30	5,220	31	0	1
<b>OS Total</b>		<b>5,220</b>	<b>30</b>	<b>5,220</b>	<b>31</b>	<b>0</b>	<b>1</b>
PF Primera Air	AGP Malaga	8,316	44	0	0	-8,316	-44
	TFS Tenerife Sur Reina Sofia	3,213	17	0	0	-3,213	-17
	YYZ Toronto Pearson International	3,564	18	0	0	-3,564	-18
<b>PF Total</b>		<b>15,093</b>	<b>79</b>	<b>0</b>	<b>0</b>	<b>-15,093</b>	<b>-79</b>
PK Pia Pakistan International Airlines	ISB Islamabad International	43,428	132	93,698	242	50,270	110
	SKT Sialkot International Airport	0	0	7,238	22	7,238	22
<b>PK Total</b>		<b>43,428</b>	<b>132</b>	<b>100,936</b>	<b>264</b>	<b>57,508</b>	<b>132</b>
QR Qatar Airways	DOH Doha	78,232	308	77,724	306	-508	-2
<b>QR Total</b>		<b>78,232</b>	<b>308</b>	<b>77,724</b>	<b>306</b>	<b>-508</b>	<b>-2</b>
SG Spicejet	ATQ Amritsar Raja Sansi	23,760	60	0	0	-23,760	-60
<b>SG Total</b>		<b>23,760</b>	<b>60</b>	<b>0</b>	<b>0</b>	<b>-23,760</b>	<b>-60</b>
SI Blue Island	BRS Bristol	0	0	0	2	0	2
	GCI Guernsey	96	2	136	2	40	0
	JER Jersey States	0	1	0	0	0	-1
<b>SI Total</b>		<b>96</b>	<b>3</b>	<b>136</b>	<b>4</b>	<b>40</b>	<b>1</b>
SK Sas Scandinavian Airlines	ARN Stockholm Arlanda	19,240	108	1,080	6	-18,160	-102
	CPH Copenhagen Airport	67,312	526	68,760	478	1,448	-48
	OSL Oslo	0	0	846	6	846	6
<b>SK Total</b>		<b>86,552</b>	<b>634</b>	<b>70,686</b>	<b>490</b>	<b>-15,866</b>	<b>-144</b>
SN Brussels Airlines	BRU Brussels	71,540	730	119,640	904	48,100	174

## Birmingham Airport W19 Start of Season Report

### W18 Start of Season vs W19 Start of Season

OPERATOR		AIRPORT		W18		W19		SEATS +/-		ATMS +/-	
				SEATS	ATMS	SEATS	ATMS	SEATS +/-	ATMS +/-		
SN Total				71,540	730	119,640	904	48,100	174		
SR	Sundair	MUC	Munich Franz Josef Strauss	720	4	0	0	-720	-4		
SR Total				720	4	0	0	-720	-4		
T5	Turkmenistan Airlines	ASB	Ashgabat	41,580	220	37,800	200	-3,780	-20		
T5 Total				41,580	220	37,800	200	-3,780	-20		
TK	Turkish Airlines	IST	Istanbul Ataturk	72,600	440	74,140	440	1,540	0		
TK Total				72,600	440	74,140	440	1,540	0		
TOM	TUI Airways	ACE	Lanzarote	29,584	142	26,874	130	-2,710	-12		
		ADB	Izmir Adnan Menderes	0	0	189	1	189	1		
		AGA	Agadir Almassira	0	0	7,749	42	7,749	42		
		AGP	Malaga	13,648	70	10,951	52	-2,697	-18		
		ALC	Alicante	10,459	56	10,081	54	-378	-2		
		AQJ	Aqaba	600	2	600	2	0	0		
		AYT	Antalya	1,134	9	599	5	-535	-4		
		BGI	Bridgetown Grantley Adams International	48,300	161	52,830	159	4,530	-2		
		BHX	Birmingham International	189	1	0	0	-189	-1		
		BJV	Bodrum. Milas Airport	0	0	221	1	221	1		
		BRS	Bristol	221	5	0	5	-221	0		
		BVC	Boa Vista (Cape Verde Islands)	19,227	87	19,448	88	221	1		
		CFU	Kerkyra I. Kapodistrias	0	0	189	2	189	2		
		CHQ	Chania Souda	189	2	189	1	0	-1		
		CMF	Chambery	5,859	32	11,794	58	5,935	26		
		COK	Cochin	600	2	600	2	0	0		
		CTA	Catania Fontanarossa	189	1	189	2	0	1		
		CUN	Cancun	34,260	110	30,180	88	-4,080	-22		
		DBV	Dubrovnik	189	2	410	4	221	2		
		DLM	Dalaman	945	5	567	6	-378	1		
		DUB	Dublin	0	0	221	1	221	1		
		DWC	Al Maktoum International Airport	600	2	600	2	0	0		
		EDI	Edinburgh Turnhouse	1,701	13	0	1	-1,701	-12		
		EMA	Nottingham East Midlands	189	4	0	25	-189	21		
		ENF	Enontekio	442	2	0	0	-442	-2		
		FAO	Faro	221	2	189	2	-32	0		
		FNC	Funchal	8,380	44	0	0	-8,380	-44		
		FUE	Fuerteventura	20,785	101	16,016	80	-4,769	-21		
		GOI	Goa Dabolim	18,900	64	0	0	-18,900	-64		

## Birmingham Airport W19 Start of Season Report

### W18 Start of Season vs W19 Start of Season

OPERATOR	AIRPORT	W18		W19		SEATS +/-	ATMS +/-
		SEATS	ATMS	SEATS	ATMS		
GVA	Geneva Geneve-Cointrin	5,967	29	0	0	-5,967	-29
HER	Heraklion N. Kazantzakis Apt.	189	2	189	2	0	0
HKT	Phuket International	3,000	10	0	0	-3,000	-10
HRG	Hurghada	18,261	89	25,489	122	7,228	33
IBZ	Ibiza	189	2	378	4	189	2
INN	Innsbruck Kranebitten	6,851	32	7,072	32	221	0
KAO	Kuusamo	7,749	42	3,780	20	-3,969	-22
KGS	Kos	189	2	189	2	0	0
KTT	Kittila	442	2	442	2	0	0
LCA	Larnaca	378	4	567	6	189	2
LGK	Langkawi	5,400	18	2,700	9	-2,700	-9
LGW	London Gatwick	300	11	0	6	-300	-5
LPA	Las Palmas De Gran Canaria	28,738	140	23,280	113	-5,458	-27
LRM	La Romana	10,800	36	0	0	-10,800	-36
LTN	London Luton Airport	4,536	59	0	1	-4,536	-58
MAH	Menorca	378	4	189	2	-189	-2
MAN	Manchester International	2,145	65	0	32	-2,145	-33
MBJ	Montego Bay Sangster International	16,800	56	16,035	47	-765	-9
MCT	Muscat Seeb	600	2	600	2	0	0
NAP	Naples	1,199	6	2,571	13	1,372	7
NBE	Enfidha	9,828	52	8,316	44	-1,512	-8
PFO	Paphos International	12,227	65	13,286	63	1,059	-2
PMI	Palma Mallorca	977	10	2,428	15	1,451	5
PUJ	Punta Cana	2,100	8	3,660	11	1,560	3
RAK	Marrakech Menara	4,158	23	8,316	44	4,158	21
REU	Reus	189	2	189	2	0	0
RHO	Rhodes Diagoras Airport	410	4	410	4	0	0
RMF	Marsa Alam	0	0	8,502	36	8,502	36
RVN	Rovaniemi	5,746	27	5,682	26	-64	-1
SFB	Orlando Central Florida Reg.	2,100	10	1,725	6	-375	-4
SID	Sal Amilcar Cabral International	19,448	88	19,006	86	-442	-2
SOF	Sofia Vrazhdebna	5,682	26	4,798	22	-884	-4

## Birmingham Airport W19 Start of Season Report

### W18 Start of Season vs W19 Start of Season

OPERATOR	AIRPORT	W18		W19		SEATS +/-	ATMS +/-
		SEATS	ATMS	SEATS	ATMS		
	SZG Salzburg W.A. Mozart	7,482	36	6,188	28	-1,294	-8
	TFS Tenerife Sur Reina Sofia	36,522	178	37,581	178	1,059	0
	TLS Toulouse Blagnac	4,632	25	4,725	25	93	0
	TRN Turin Citta Di Torino	7,924	36	6,188	28	-1,736	-8
	UTP Utapao	4,200	14	7,500	25	3,300	11
	VRN Verona	6,112	33	6,188	28	76	-5
	ZTH Zakinthos Is	221	2	221	3	0	1
<b>TOM Total</b>		<b>460,880</b>	<b>2,169</b>	<b>419,076</b>	<b>1,902</b>	<b>-41,804</b>	<b>-267</b>
<b>VKA</b>	<b>Vulkan Air</b>						
	HAM Hamburg Fuhlsbuettel	0	0	0	21	0	21
	LGG Liege Bierset	0	0	0	2	0	2
	TLS Toulouse Blagnac	0	0	0	21	0	21
<b>VKA Total</b>		<b>0</b>	<b>0</b>	<b>0</b>	<b>44</b>	<b>0</b>	<b>44</b>
<b>VY</b>	<b>Vueling Airlines</b>						
	BCN Barcelona	30,600	170	39,240	218	8,640	48
	FCO Rome Fiumicino	0	0	1,440	8	1,440	8
<b>VY Total</b>		<b>30,600</b>	<b>170</b>	<b>40,680</b>	<b>226</b>	<b>10,080</b>	<b>56</b>
<b>W6</b>	<b>Wizz Air</b>						
	BUD Budapest Ferihegy	16,560	92	16,920	94	360	2
	CLJ Cluj-Napoca, Romania	10,800	60	15,840	88	5,040	28
	KRK Krakow J. Paul Ii Balice International	0	0	30,360	132	30,360	132
	OTP Bucharest Otopeni International	29,900	130	30,360	132	460	2
	POZ Poznan Lawica	15,840	88	15,840	88	0	0
	WAW Warsaw Okecie	26,680	116	21,620	94	-5,060	-22
	WRO Wroclaw Strachowice	15,840	88	15,840	88	0	0
<b>W6 Total</b>		<b>115,620</b>	<b>574</b>	<b>146,780</b>	<b>716</b>	<b>31,160</b>	<b>142</b>
<b>WX</b>	<b>Cityjet</b>						
	DUB Dublin	0	0	190	2	190	2
<b>WX Total</b>		<b>0</b>	<b>0</b>	<b>190</b>	<b>2</b>	<b>190</b>	<b>2</b>
<b>XM</b>	<b>Zimex</b>						
	DUB Dublin	0	111	0	115	0	4
	FRA Frankfurt International	0	0	0	220	0	220
	MST Maastricht Aachen	0	110	0	115	0	5
<b>XM Total</b>		<b>0</b>	<b>221</b>	<b>0</b>	<b>450</b>	<b>0</b>	<b>229</b>
<b>ZT</b>	<b>Titan Airways</b>						
	AEY Akureyri	404	2	0	0	-404	-2
	BGO Bergen Flesland	380	2	672	4	292	2
	CMF Chambery	4,320	24	0	0	-4,320	-24
	IVL Ivalo	0	0	4,094	23	4,094	23
	TIA Tirana Rinas	210	2	0	0	-210	-2
<b>ZT Total</b>		<b>5,314</b>	<b>30</b>	<b>4,766</b>	<b>27</b>	<b>-548</b>	<b>-3</b>
<b>Total</b>		<b>5,791,131</b>	<b>40,613</b>	<b>5,663,009</b>	<b>37,229</b>	<b>-128,122</b>	<b>-3,384</b>