

CHRISTCHURCH INTERNATIONAL AIRPORT CHC

W19 Start of Season Report (International Traffic)

Key Statistics	W18 Operated	W19 Start of Season	Percentage Change	
Air Transport Movements	5,358	4,988	▲	-6.9%
Total Seats	1,071,614	1,070,635	▲	-0.1%
Seats per Passenger ATM	200	215		

Contents

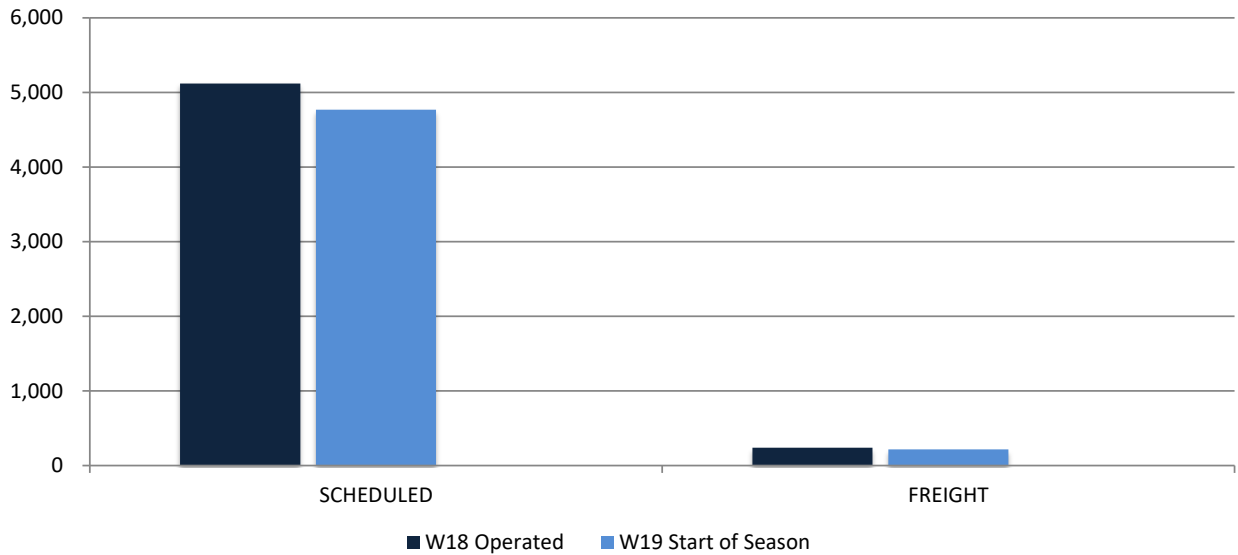
	Page
Movements and Seats by Service Type	2
Peak Week Departure Frequencies by Carrier	3
Top Airlines by ATM's and Seats	4
Top Destinations by ATM's and Seats	5
International Terminal - Passengers per 60 Minutes	6
Glossary	7

Data in this report is current as of 14 October 2019

No warranty whether expressed or implied as to the completeness, accuracy, fitness for purpose, or satisfactory quality is given by ACL regarding the information in this report, which is provided by third parties. Accordingly, ACL excludes all liability with regard to such data.

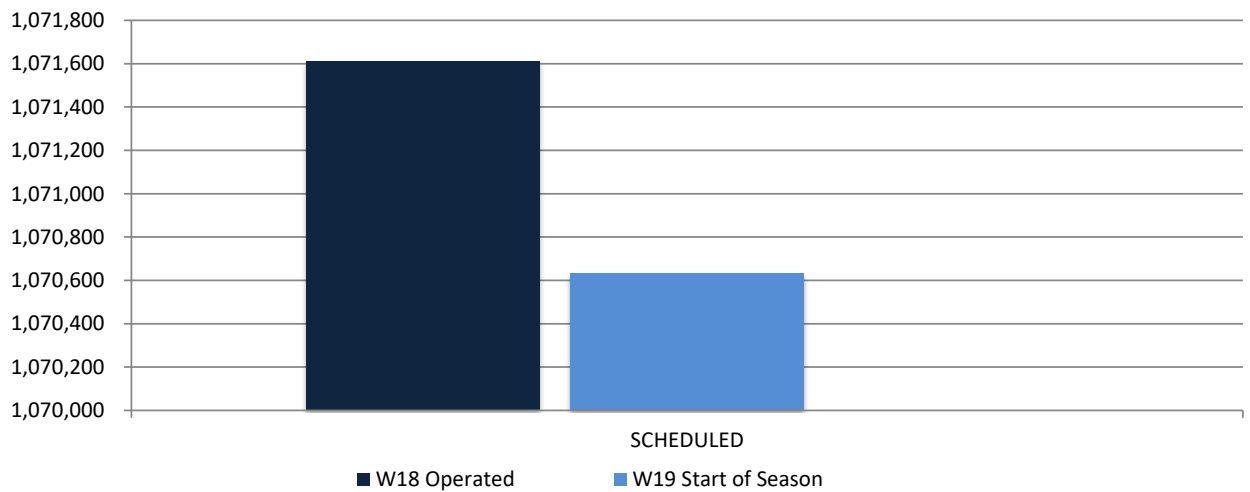
The contents of this report may not be reproduced without the written consent of ACL.

Full Season ATMs by Service Type



	W18 Operated	W19 Start of Season	Percentage Change
SCHEDULED	5,120	4,770	▲ -6.8%
FREIGHT	238	218	▲ -8.4%
TOTAL	5,358	4,988	▲ -6.9%

Full Season Seats by Service Type



	W18 Operated	W19 Start of Season	Percentage Change
SCHEDULED	1,071,614	1,070,635	▲ -0.1%
TOTAL	1,071,614	1,070,635	▲ -0.1%

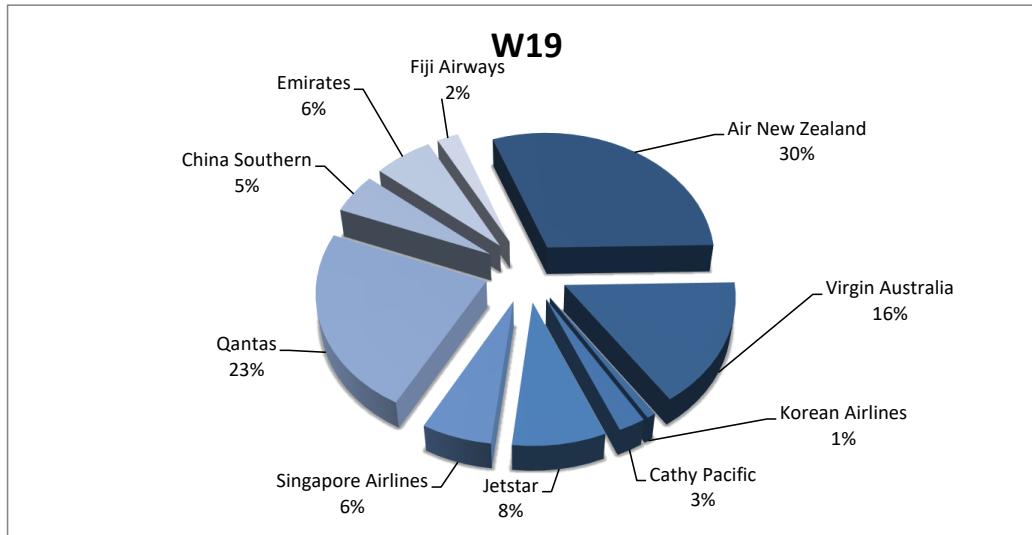
CHRISTCHURCH INTERNATIONAL AIRPORT

PEAK WEEK DEPARTURE FREQUENCIES - BY CARRIER

OPERATOR	AIRPORT	W18		W19		SEATS +/-	ATMS +/-		
		SEATS	ATMS	SEATS	ATMS				
CX	Cathay Pacific	HKG	Hong Kong International	840	3	1,120	4	280	1
CX Total				840	3	1,120	4	280	1
CZ	China Southern Airlines	CAN	Guangzhou Baiyun	2,016	7	1,932	7	-84	0
CZ Total				2,016	7	1,932	7	-84	0
EK	Emirates	DXB	Dubai	3,612	7	3,612	7	0	0
EK Total				3,612	7	3,612	7	0	0
FJ	Fiji Airways	NAN	Nadi International	492	3	510	3	18	0
FJ Total				492	3	510	3	18	0
JQ	Jetstar Airways	MEL	Melbourne	1,302	7	1,116	6	-186	-1
		OOL	Gold Coast Coolangatta	558	3	744	4	186	1
		SYD	Sydney Kingsford Smith	930	5	0	0	-930	-5
JQ Total				2,790	15	1,860	10	-930	-5
KE	Korean Air	ICN	Seoul Incheon International	0	0	582	2	582	2
KE Total				0	0	582	2	582	2
NZ	Air New Zealand	BNE	Brisbane International	1,680	10	1,828	9	148	-1
		MEL	Melbourne	2,184	13	2,421	12	237	-1
		OOL	Gold Coast Coolangatta	336	2	379	2	43	0
		PER	Perth	542	2	604	2	62	0
		SIN	Singapore Changi	0	0	1,510	5	1,510	5
		SYD	Sydney Kingsford Smith	2,016	12	2,158	11	142	-1
NZ Total				6,758	39	8,900	41	2,142	2
QF	Qantas	BNE	Brisbane International	1,218	7	1,218	7	0	0
		MEL	Melbourne	1,218	7	1,392	8	174	1
		SYD	Sydney Kingsford Smith	1,218	12	1,392	13	174	1
QF Total				3,654	26	4,002	28	348	2
SQ	Singapore Airlines	SIN	Singapore Changi	2,710	10	1,771	7	-939	-3
SQ Total				2,710	10	1,771	7	-939	-3
VA	Virgin Australia Airlines	BNE	Brisbane International	1,584	9	1,584	9	0	0
		MEL	Melbourne	1,232	7	1,232	7	0	0
		SYD	Sydney Kingsford Smith	704	4	704	4	0	0
VA Total				3,520	20	3,520	20	0	0

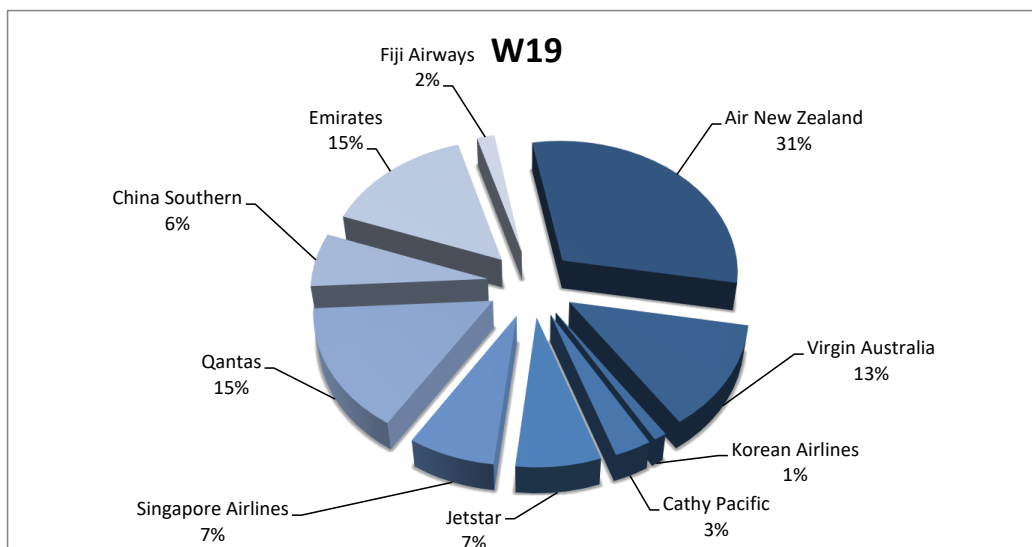
Airlines by Air Transport Movements (ATMs)

Airline	W18	W19
Air New Zealand	1,576	1,508
Virgin Australia	798	788
Korean Airlines	0	40
Cathy Pacific	78	118
Jetstar	662	408
Singapore Airlines	370	306
Qantas	1,142	1,148
China Southern	292	252
Emirates	308	308
Fiji Airways	112	112

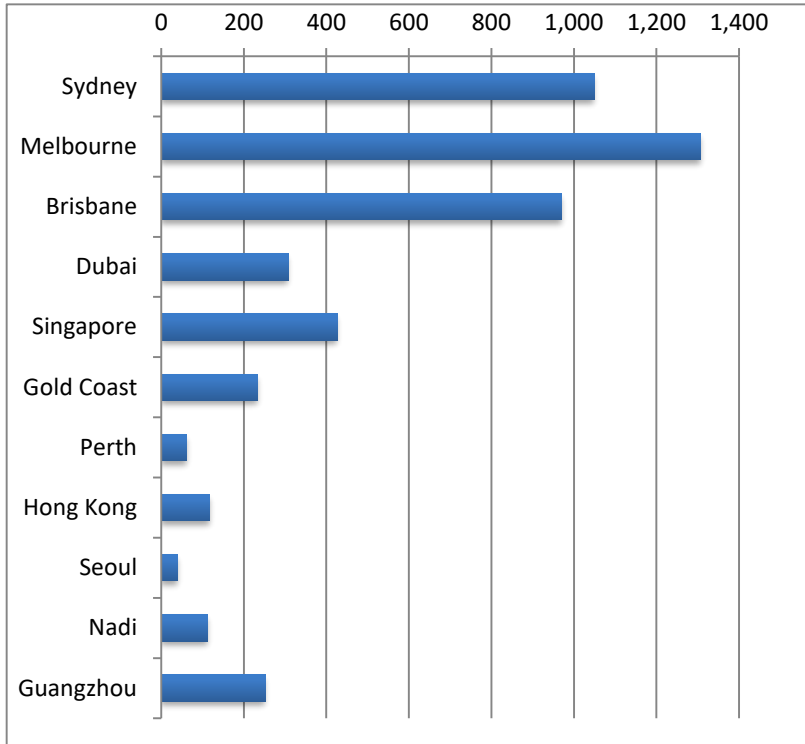


Airlines by Air Seats

Airline	W18	W19
Air New Zealand	270,860	326,575
Virgin Australia	136,576	136,928
Korean Airlines	0	11,640
Cathy Pacific	21,840	33,040
Jetstar	123,114	75,888
Singapore Airlines	96,234	77,418
Qantas	159,852	161,820
China Southern	86,178	69,552
Emirates	158,928	158,928
Fiji Airways	18,032	18,846

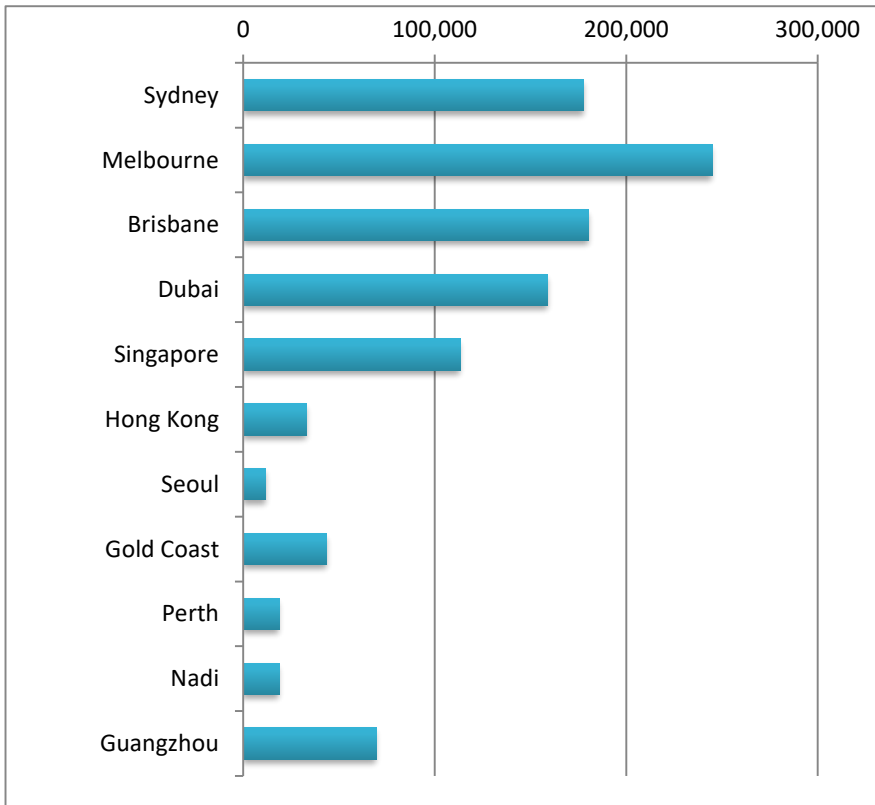


Air Transport Movements by Destination



Destination	NW18	NW19
Sydney	1,321	1,049
Melbourne	1,428	1,307
Brisbane	1,044	971
Dubai	308	308
Singapore	367	426
Gold Coast	220	233
Perth	61	62
Hong Kong	78	118
Seoul	0	40
Nadi	112	112
Guangzhou	292	252

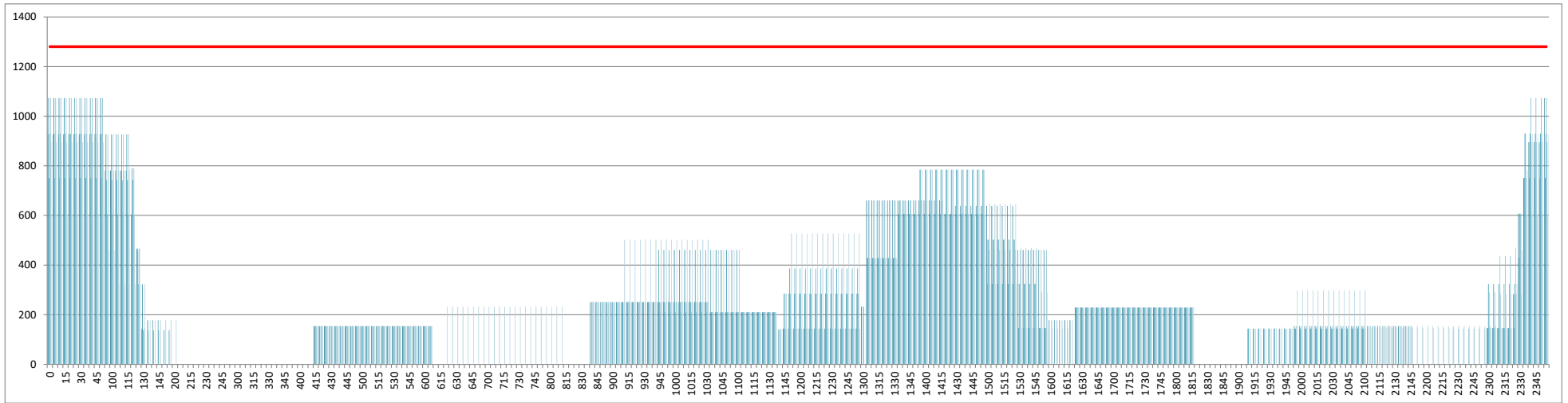
Air Transport Seats by Destination



Destination	NW18	NW19
Sydney	208,126	177,772
Melbourne	247,056	244,812
Brisbane	178,752	180,289
Dubai	158,928	158,928
Singapore	96,234	113,334
Hong Kong	21,840	33,040
Seoul	0	11,640
Gold Coast	39,300	43,698
Perth	17,168	18,724
Nadi	18,032	18,846
Guangzhou	86,178	69,552

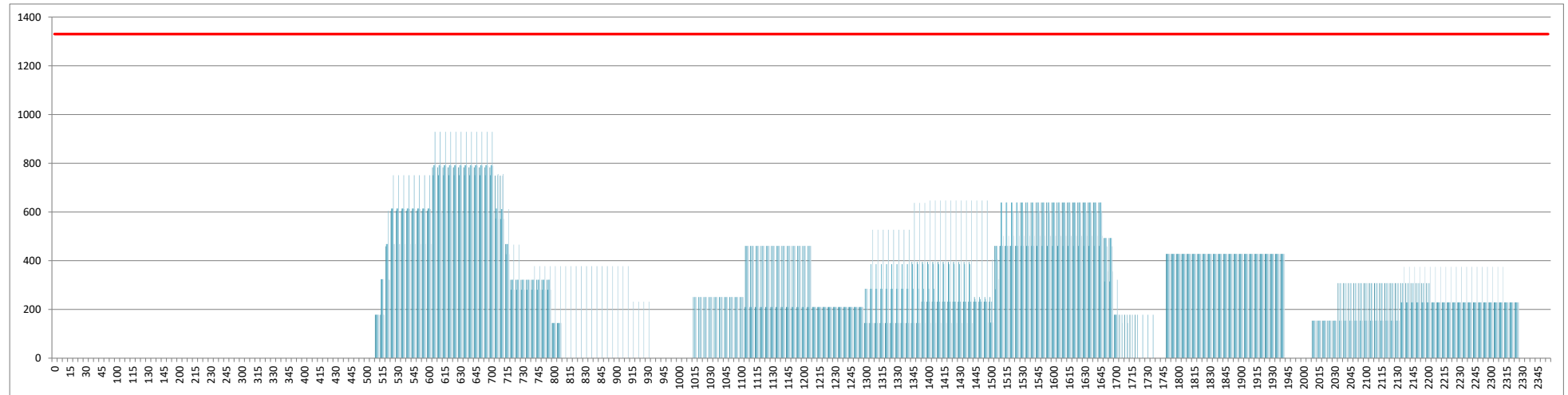
INTERNATIONAL TERMINAL ARRIVALS (PER 60 MINUTES)

Week Movements per Hour - All times LOCAL



INTERNATIONAL TERMINAL DEPARTURES (PER 60 MINUTES)

Week Movements per Hour - All times LOCAL



GLOSSARY OF TERMS

Air Transport Movement (ATM)	A scheduled or charter passenger or freight aircraft movement.
Allocation	The allocation of slots such that demand is constrained to fit within declared scheduling limits.
Common Travel Area (CTA)	Services to or from the Republic of Ireland and the Channel Islands.
Demand	The unconstrained demand for slots, prior to any schedule adjustments.
Passenger ATM	A scheduled or charter <u>passenger</u> aircraft movement (ie, excluding all-cargo aircraft movements).
Scheduling Limits	Limiting parameters declared by the Airport Operator used in the coordination process.
Seats	The number of seats based on the aircraft configuration advised by the airline.
Peak Week	30 December 2019 to 05 January 2020
Data Snapshot	All data used for this report was as held 14 October 2019

GUIDE TO HISTOGRAMS

The histograms show the pattern of traffic by time of day against the appropriate scheduling limit. Each time period consist of seven columns representing the days-of-week, Monday through Sunday.