

Al Maktoum International Airport (DWC)

Winter 2019/20 (W19)



Start of Season Report

Report Date: Fri 25-Oct-2019

Headlines

	W19 Start	vs. W18 Start	vs. W18 End
Total Air Transport Movements (Passenger & Freight)	7,893	▼ -5.2%	▼ -8.7%
Total Passenger Air Transport Movements	3,213	▼ -4.2%	▼ -7.5%
Total Passenger Air Transport Movement Seats	664,074	▲ 1.4%	▼ -5.4%
Average Seats per Passenger Air Transport Movement	206.68	▲ 5.8%	▲ 2.3%
Percentage of allocated slots cleared as requested (OK)	100%		

Contents

Page	Content
2	Runway Scheduling Limits
3	ATM Allocation by Operator (Full season and Peak Week Comparison)
4	Peak Week - Allocation and Slot Adjustment Distribution by Operator
5	Significant Route Changes
6	Full Season - ATM Analysis
7	Full Season - PATM Seats Analysis
8	Full Season - Terminal Analysis
9	Full Season - Aircraft Size Analysis
10	Full Season - Seasonality
11	Peak Week - Hourly Runway Demand
12	Peak Week - Hourly Runway Allocation
13	Peak Week - Hourly Runway Allocation Comparison (W19 Start vs. W18 Start)
14	Peak Week - Hourly Runway Allocation Comparison (W19 Start vs. W18 End)
15	Peak Week Histogram - Arrival Movements (R10) - All Terminals - All Operators
16	Peak Week Histogram - Arrival Movements (R10) - All Terminals - All Operators
17	Peak Week Histogram - Arrival Movements (R10) - All Terminals - All Operators
18	Peak Week Histogram - Departure Movements (R10) - All Terminals - All Operators
19	Peak Week Histogram - Departure Movements (R10) - All Terminals - All Operators
20	Peak Week Histogram - Arrival Movements (R10) - All Terminals - All Operators
21	Peak Week Histogram - Arrival Passengers (T60) - All Terminals - All Operators
22	Peak Week Histogram - Departure Passengers (T60) - All Terminals - All Operators
23	Glossary

W18 scheduling season runs from Sun 28-Oct-2018 to Sat 30-Mar-2019 (154 days).

W19 scheduling season runs from Sun 27-Oct-2019 to Sat 28-Mar-2020 (154 days).

Disclaimer

No warranty whether expressed or implied as to the completeness, accuracy, fitness for purpose, or satisfactory quality is given by ACL regarding the information in this report, which is provided by third parties. Accordingly, ACL excludes all liability with regard to such data.

The contents of this report may not be reproduced without the written consent of ACL.

Air Transport Movement Allocation by Operator

Comparison between W18 End vs. W19 Start



Operator	FULL SEASON ALLOCATION							PEAK WEEK ALLOCATION								
	W18 ATMs	W19 ATMs	+/- change	W19 Rank	W18 Seats	W19 Seats	+/- change	W19 Rank	W18 ATMs	W19 ATMs	+/- change	W19 Rank	W18 Seats	W19 Seats	+/- change	W19 Rank
Aeroflot	310	308	-2	5	49,712	48,940	-772	4	14	14	0	5	2,212	2,212	0	4
Air Cargo Global	12	-	-12	30	-	-	0	19	4	-	-4	24	-	-	0	13
Cargolux	-	-	0	30	-	-	0	19	-	-	0	24	-	-	0	13
Air Europa	2	-	-2	30	598	-	-598	19	-	-	0	24	-	-	0	13
Air Itlay	-	12	12	22	-	3,024	3,024	12	-	4	4	13	-	1,008	1,008	6
Air Mediterranean	1	-	-1	30	162	-	-162	19	1	-	-1	24	162	-	-162	13
Air Minas Linhs Aereas	1	-	-1	30	-	-	0	19	-	-	0	24	-	-	0	13
AirBridgeCargo	90	-	-90	30	-	-	0	19	4	-	-4	24	-	-	0	13
Antonov Airlines	2	-	-2	30	-	-	0	19	-	-	0	24	-	-	0	13
Ariana Afghan Airlines	1	-	-1	30	142	-	-142	19	-	-	0	24	-	-	0	13
Arkefly	-	2	2	28	-	596	596	17	-	-	0	24	-	-	0	13
Astral Aviation	1	-	-1	30	-	-	0	19	-	-	0	24	-	-	0	13
Atlas Air Inc	36	-	-36	30	-	-	0	19	-	-	0	24	-	-	0	13
AVIACON ZITOTRANS JSC	1	-	-1	30	-	-	0	19	-	-	0	24	-	-	0	13
Azur Air Russia	1,005	1,172	167	2	204,445	258,811	54,366	1	52	62	10	2	10,122	13,622	3,500	1
Belavia Belarusian Airlines	23	44	21	16	4,347	8,316	3,969	8	1	2	1	18	189	378	189	10
Blue Panorama Airlines	6	-	-6	30	1,614	-	-1,614	19	-	-	0	24	-	-	0	13
CargoLogicAir	172	174	2	10	-	-	0	19	8	8	0	9	-	-	0	13
Cargolux Italia S.p.A	45	44	-1	16	-	-	0	19	2	2	0	18	-	-	0	13
Cathay Pacific	138	162	24	12	-	-	0	19	8	8	0	9	-	-	0	13
China Airlines	310	305	-5	7	-	-	0	19	14	14	0	5	-	-	0	13
Condor	460	-	-460	30	126,276	-	-126,276	19	14	-	-14	24	3,850	-	-3,850	13
DC Aviation	4	-	-4	30	11	-	-11	19	-	-	0	24	-	-	0	13
DHL Aviation	44	44	0	16	-	-	0	19	2	2	0	18	-	-	0	13
Egypt Air	1	2	1	28	76	280	204	18	-	-	0	24	-	-	0	13
Emirates	2,769	2,901	132	1	-	-	0	19	143	132	-11	1	-	-	0	13
Ethiopian Airlines	150	131	-19	13	-	-	0	19	8	6	-2	12	-	-	0	13
Ethihad Airways	101	-	-101	30	-	-	0	19	-	-	0	24	-	-	0	13
Europe Air	114	-	-114	30	-	-	0	19	21	-	-21	24	-	-	0	13
Federal Express	46	84	38	15	-	-	0	19	2	4	2	13	-	-	0	13
Finnair	6	-	-6	30	1,572	-	-1,572	19	-	-	0	24	-	-	0	13
Fly Pro	20	-	-20	30	-	-	0	19	-	-	0	24	-	-	0	13
Flydubai	302	431	129	4	52,548	81,459	28,911	3	8	28	20	4	1,392	5,292	3,900	3
Flynas	2	-	-2	30	328	-	-328	19	-	-	0	24	-	-	0	13
GA	13	-	-13	30	260	-	-260	19	1	-	-1	24	10	-	-10	13
Geo Sky LLC	161	-	-161	30	-	-	0	19	11	-	-11	24	-	-	0	13
Getjet	44	24	-20	21	8,316	4,320	-3,996	10	-	2	2	18	-	360	360	11
Global Africa Cargo	134	-	-134	30	-	-	0	19	14	-	-14	24	-	-	0	13
HELIJET INTERNATIONAL INC	2	-	-2	30	-	-	0	19	-	-	0	24	-	-	0	13
Iberia	30	28	-2	20	8,368	10,052	1,684	7	-	2	2	18	-	718	718	9
Ikar Airlines LLC	27	34	7	19	6,171	6,426	255	9	8	4	-4	13	1,601	756	-845	8
Iraero	2	-	-2	30	742	-	-742	19	-	-	0	24	-	-	0	13
Iran Air	4	-	-4	30	-	-	0	19	-	-	0	24	-	-	0	13
Kalitta Air	46	-	-46	30	-	-	0	19	-	-	0	24	-	-	0	13
LLC SkyAviaTrans	2	-	-2	30	-	-	0	19	-	-	0	24	-	-	0	13
LYNDEN AIR CARGO LLC	6	-	-6	30	-	-	0	19	-	-	0	24	-	-	0	13
Maleth-Aero	1	-	-1	30	102	-	-102	19	-	-	0	24	-	-	0	13
Mihin Lanka	150	-	-150	30	25,500	-	-25,500	19	-	-	0	24	-	-	0	13
MNG Airlines	3	-	-3	30	-	-	0	19	1	-	-1	24	-	-	0	13
MyCargo Airlines	26	-	-26	30	-	-	0	19	2	-	-2	24	-	-	0	13
National Air Cargo	30	-	-30	30	-	-	0	19	2	-	-2	24	-	-	0	13
Neos	-	6	6	26	-	1,312	1,312	16	-	-	0	24	-	-	0	13
Nordwind Airlines	117	-	-117	30	22,113	-	-22,113	19	6	-	-6	24	1,134	-	-1,134	13
Onur Air	-	198	198	9	-	43,164	43,164	5	-	4	4	13	-	872	872	7
Oscar Jet	8	-	-8	30	-	-	0	19	-	-	0	24	-	-	0	13
Pobeda Airlines LLC	-	-	0	30	-	-	0	19	-	-	0	24	-	-	0	13
Privilege Style	6	-	-6	30	1,482	-	-1,482	19	-	-	0	24	-	-	0	13
Qeshm Air	1	-	-1	30	-	-	0	19	-	-	0	24	-	-	0	13
Rada Airlines	4	-	-4	30	-	-	0	19	-	-	0	24	-	-	0	13
Ruby Star	12	-	-12	30	-	-	0	19	4	-	-4	24	-	-	0	13
Salam Air	2	-	-2	30	348	-	-348	19	-	-	0	24	-	-	0	13
Saudia	2	-	-2	30	-	-	0	19	-	-	0	24	-	-	0	13
SCAT Airlines	20	-	-20	30	4,474	-	-4,474	19	-	-	0	24	-	-	0	13
Sigma Airlines	5	-	-5	30	-	-	0	19	-	-	0	24	-	-	0	13
Silk Way Airlines	1	-	-1	30	-	-	0	19	-	-	0	24	-	-	0	13
Silk Way West Airlines	85	87	2	14	-	-	0	19	2	4	2	13	-	-	0	13
Singapore Airlines	2	-	-2	30	-	-	0	19	-	-	0	24	-	-	0	13
SKA Air Uganda	1	-	-1	30	-	-	0	19	-	-	0	24	-	-	0	13
Small Planet Airlines	-	-	0	30	-	-	0	19	-	-	0	24	-	-	0	13
SmartLynx Airlines Estonia	22	10	-12	24	3,960	1,800	-2,160	14	-	-	0	24	-	-	0	13
Taban Air	4	-	-4	30	188	-	-188	19	-	-	0	24	-	-	0	13
The Cargo Airlines	100	-	-100	30	-	-	0	19	5	-	-5	24	-	-	0	13
Thomas Cook (UK)	-	10	10	24	-	3,220	3,220	11	-	-	0	24	-	-	0	13
Titan Airways	6	-	-6	30	724	-	-724	19	-	-	0	24	-	-	0	13
TUI Airways	6	6	0	26	1,800	1,800	0	14	-	-	0	24	-	-	0	13
TUIfly	117	166	49	11	22,113	31,374	9,261	6	4	8	4	9	756	1,512	756	5
Turkish Airlines	153	264	111	8	165	-	-165	19	6	12	6	8	-	-	0	13
UNI-TOP AIRLINES	132	308	176	5	-	-	0	19	6	14	8	5	-	-	0	13
Ural Airlines	203	-	-203	30	44,540	-	-44,540	19	10	-	-10	24	2,200	-	-2,200	13
Uzbekistan Airways	14	-	-14	30	794	-	-794	19	-	-	0	24	-	-	0	13
Vistajet Canada	2	-	-2	30	14	-	-14	19	-	-	0	24	-	-	0	13
Volga-Dnepr Airlines	7	-	-7	30	-	-	0	19	-	-	0	24	-	-	0	13
Wizz Air	572	748	176	3	107,260	157,212	49,952	2	26	34	8	3	4,880	7,146	2,266	2
Yamal Airlines	6	12	6	22	984	1,968	984	13	-	2	2	18	-	328	328	12
Zetavia	8	-	-8	30	-	-	0	19	1	-	-1	24	-	-	0	13
TOTAL	8,474	7,717	-757		702,249	664,074	-38,175		415	372	-43		28,508	34,204	5,696	

Operators with 0 'ATMs' in both W18 End & W19 Start schedules are included in the table due to appearing in the W18 Start schedule (either with/without allocated slots).

Peak Week - Allocation and Slot Adjustment Distribution by Operator



Schedule: W19 Start

Operator	W19 allocated ATMs	SLOT ADJUSTMENTS (MINUTES OFF REQUESTED TIME)														Requests with NO slot allocated
		0	5	10	15	20	25	30	35	40	45	50	55	60	>60	
Aeroflot	14	100.0%	0.0%	0.0%	0.0%	0.0%	0.0%	0.0%	0.0%	0.0%	0.0%	0.0%	0.0%	0.0%	0.0%	-
Air Cargo Global	-	-	-	-	-	-	-	-	-	-	-	-	-	-	-	-
Cargolux	-	-	-	-	-	-	-	-	-	-	-	-	-	-	-	-
Air Itlay	4	100.0%	0.0%	0.0%	0.0%	0.0%	0.0%	0.0%	0.0%	0.0%	0.0%	0.0%	0.0%	0.0%	0.0%	-
Air Mediterranean	-	-	-	-	-	-	-	-	-	-	-	-	-	-	-	-
AirBridgeCargo	-	-	-	-	-	-	-	-	-	-	-	-	-	-	-	-
Azur Air Russia	62	98.4%	0.0%	0.0%	0.0%	0.0%	0.0%	1.6%	0.0%	0.0%	0.0%	0.0%	0.0%	0.0%	0.0%	2
Belavia Belarusian Airlines	2	100.0%	0.0%	0.0%	0.0%	0.0%	0.0%	0.0%	0.0%	0.0%	0.0%	0.0%	0.0%	0.0%	0.0%	-
Blue Panorama Airlines	-	-	-	-	-	-	-	-	-	-	-	-	-	-	-	-
CargoLogicAir	8	100.0%	0.0%	0.0%	0.0%	0.0%	0.0%	0.0%	0.0%	0.0%	0.0%	0.0%	0.0%	0.0%	0.0%	-
Cargolux Italia S.p.A	2	100.0%	0.0%	0.0%	0.0%	0.0%	0.0%	0.0%	0.0%	0.0%	0.0%	0.0%	0.0%	0.0%	0.0%	-
Cathay Pacific	8	100.0%	0.0%	0.0%	0.0%	0.0%	0.0%	0.0%	0.0%	0.0%	0.0%	0.0%	0.0%	0.0%	0.0%	-
China Airlines	14	100.0%	0.0%	0.0%	0.0%	0.0%	0.0%	0.0%	0.0%	0.0%	0.0%	0.0%	0.0%	0.0%	0.0%	-
Condor	-	-	-	-	-	-	-	-	-	-	-	-	-	-	-	-
DHL Aviation	2	100.0%	0.0%	0.0%	0.0%	0.0%	0.0%	0.0%	0.0%	0.0%	0.0%	0.0%	0.0%	0.0%	0.0%	-
Emirates	132	100.0%	0.0%	0.0%	0.0%	0.0%	0.0%	0.0%	0.0%	0.0%	0.0%	0.0%	0.0%	0.0%	0.0%	-
Ethiopian Airlines	6	100.0%	0.0%	0.0%	0.0%	0.0%	0.0%	0.0%	0.0%	0.0%	0.0%	0.0%	0.0%	0.0%	0.0%	-
Europe Air	-	-	-	-	-	-	-	-	-	-	-	-	-	-	-	-
Federal Express	4	100.0%	0.0%	0.0%	0.0%	0.0%	0.0%	0.0%	0.0%	0.0%	0.0%	0.0%	0.0%	0.0%	0.0%	-
Flydubai	28	100.0%	0.0%	0.0%	0.0%	0.0%	0.0%	0.0%	0.0%	0.0%	0.0%	0.0%	0.0%	0.0%	0.0%	-
Flynas	-	-	-	-	-	-	-	-	-	-	-	-	-	-	-	-
GA	-	-	-	-	-	-	-	-	-	-	-	-	-	-	-	-
Geo Sky LLC	-	-	-	-	-	-	-	-	-	-	-	-	-	-	-	-
Getjet	2	100.0%	0.0%	0.0%	0.0%	0.0%	0.0%	0.0%	0.0%	0.0%	0.0%	0.0%	0.0%	0.0%	0.0%	-
Global Africa Cargo	-	-	-	-	-	-	-	-	-	-	-	-	-	-	-	-
Iberia	2	100.0%	0.0%	0.0%	0.0%	0.0%	0.0%	0.0%	0.0%	0.0%	0.0%	0.0%	0.0%	0.0%	0.0%	-
Ikar Airlines LLC	4	100.0%	0.0%	0.0%	0.0%	0.0%	0.0%	0.0%	0.0%	0.0%	0.0%	0.0%	0.0%	0.0%	0.0%	-
Mihin Lanka	-	-	-	-	-	-	-	-	-	-	-	-	-	-	-	-
MNG Airlines	-	-	-	-	-	-	-	-	-	-	-	-	-	-	-	-
MyCargo Airlines	-	-	-	-	-	-	-	-	-	-	-	-	-	-	-	-
National Air Cargo	-	-	-	-	-	-	-	-	-	-	-	-	-	-	-	-
Nordwind Airlines	-	-	-	-	-	-	-	-	-	-	-	-	-	-	-	-
Onur Air	4	100.0%	0.0%	0.0%	0.0%	0.0%	0.0%	0.0%	0.0%	0.0%	0.0%	0.0%	0.0%	0.0%	0.0%	-
Pobeda Airlines LLC	-	-	-	-	-	-	-	-	-	-	-	-	-	-	-	-
Ruby Star	-	-	-	-	-	-	-	-	-	-	-	-	-	-	-	-
Silk Way West Airlines	4	100.0%	0.0%	0.0%	0.0%	0.0%	0.0%	0.0%	0.0%	0.0%	0.0%	0.0%	0.0%	0.0%	0.0%	-
Small Planet Airlines	-	-	-	-	-	-	-	-	-	-	-	-	-	-	-	-
Smartlynx Airlines Estonia	-	-	-	-	-	-	-	-	-	-	-	-	-	-	-	-
The Cargo Airlines	-	-	-	-	-	-	-	-	-	-	-	-	-	-	-	-
TUfly	8	100.0%	0.0%	0.0%	0.0%	0.0%	0.0%	0.0%	0.0%	0.0%	0.0%	0.0%	0.0%	0.0%	0.0%	-
Turkish Airlines	12	100.0%	0.0%	0.0%	0.0%	0.0%	0.0%	0.0%	0.0%	0.0%	0.0%	0.0%	0.0%	0.0%	0.0%	-
UNI-TOP AIRLINES	14	92.9%	0.0%	0.0%	0.0%	0.0%	0.0%	0.0%	0.0%	0.0%	0.0%	0.0%	0.0%	0.0%	7.1%	-
Ural Airlines	-	-	-	-	-	-	-	-	-	-	-	-	-	-	-	-
Uzbekistan Airways	-	-	-	-	-	-	-	-	-	-	-	-	-	-	-	-
Wizz Air	34	100.0%	0.0%	0.0%	0.0%	0.0%	0.0%	0.0%	0.0%	0.0%	0.0%	0.0%	0.0%	0.0%	0.0%	-
Yamal Airlines	2	100.0%	0.0%	0.0%	0.0%	0.0%	0.0%	0.0%	0.0%	0.0%	0.0%	0.0%	0.0%	0.0%	0.0%	-
Zetavia	-	-	-	-	-	-	-	-	-	-	-	-	-	-	-	-
TOTAL	372	101.6%	0.0%	0.0%	0.0%	0.0%	0.0%	0.3%	0.0%	0.0%	0.0%	0.0%	0.0%	0.0%	0.3%	2

Operators with 0 'allocated ATMs' and 0 'Requests with NO slot allocated' in W19, are included in this list due to having slots allocated in either W18 Start or W18 End schedules.

Significant Route Changes



Operator	Category	Description of change from W18 schedule to W19 schedule
AirBridgeCargo	CANCELLED	Cancelled route to SVO
Azur Air Russia	NEW	New route to EGO and GOI
Belavia Belarusian Airlines	NEW	Increased routes to MSQ
Condor	CANCELLED	Cancelled routes to BSN, DUS, FRA, HAJ, LEJ, MUC, NUE, STR
Emirates	NEW	Increased routes to HKG, MST, ORD, PVG
Europe Air	CANCELLED	Cancelled routes to XJD
Federal Express	NEW	New route to DXB
Geo Sky Llc	CANCELLED	Cancelled routes to GYD, KBL, KDH
Global Africa Cargo	CANCELLED	Cancelled routes to AMD, HAN, ISU, SGN
Mihin Lanka	CANCELLED	Cancelled route to TBS
Nordwind Airlines	CANCELLED	Cancelled route to SVO
Onur Air	NEW	New routes to BSL, LEJ, NUE, SXF
SmartLynx Airlines Estonia	CANCELLED	Fewer routes to TLL
Turkish Airlines	NEW	New Routes to ISL and HAN
Turkish Airlines	CANCELLED	Cancelled route to IST
Uni-Top Airlines	NEW	Increased Flights to KMG
Uni-Top Airlines	CANCELLED	Cancelled route to DEL
Ural Airlines	CANCELLED	Cancelled route to DME

Full Season - ATM Analysis

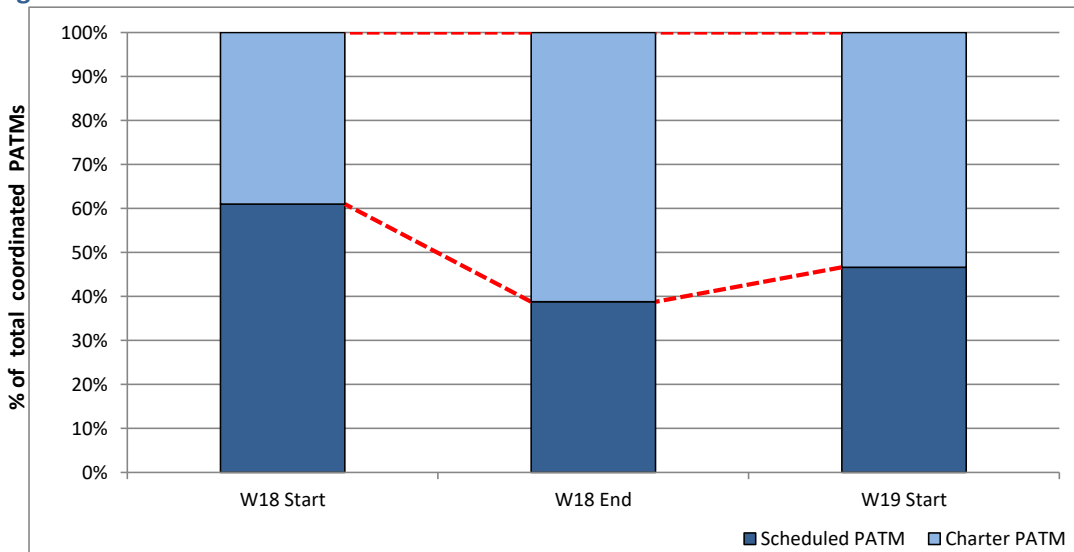


Total ATMs: Passenger ATMs vs. Freight ATMs



Schedule Snapshot

Passenger ATMs: Scheduled vs. Charter

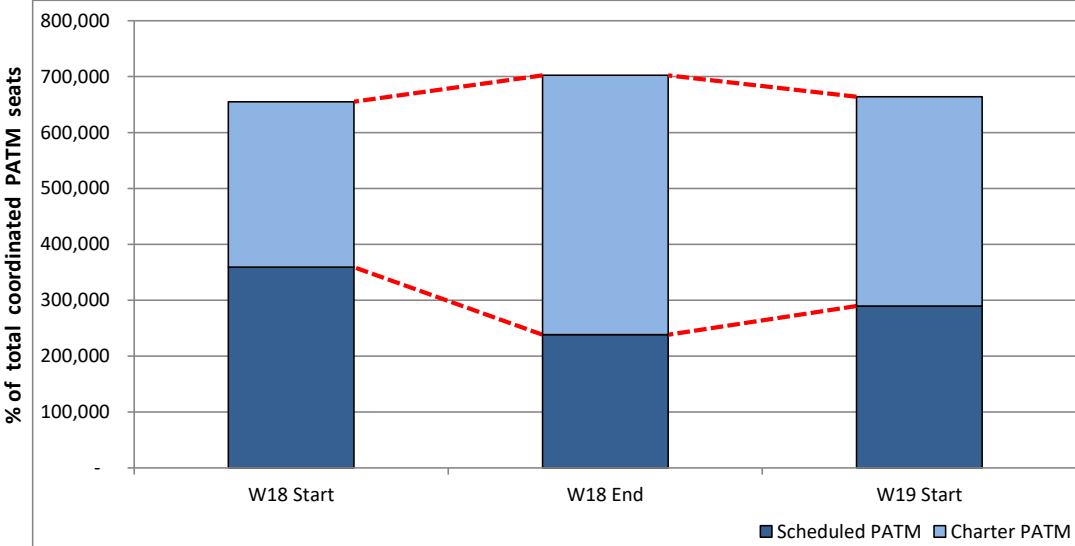


Schedule Snapshot

Full Season - PATM Seats Analysis

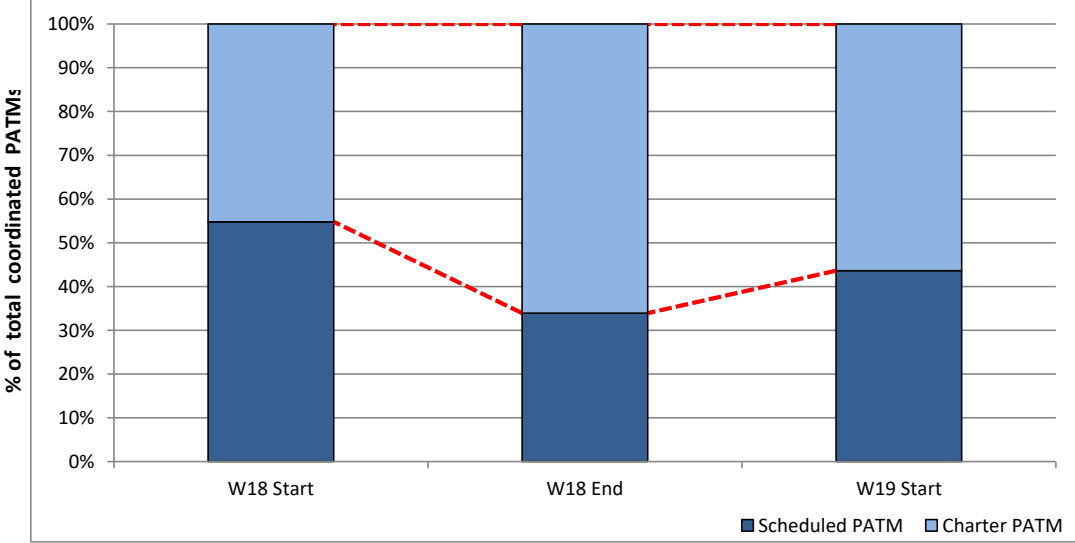


Total Passenger ATM seats: Scheduled vs. Charter



Schedule Snapshot

Passenger ATM seats: Scheduled vs. Charter

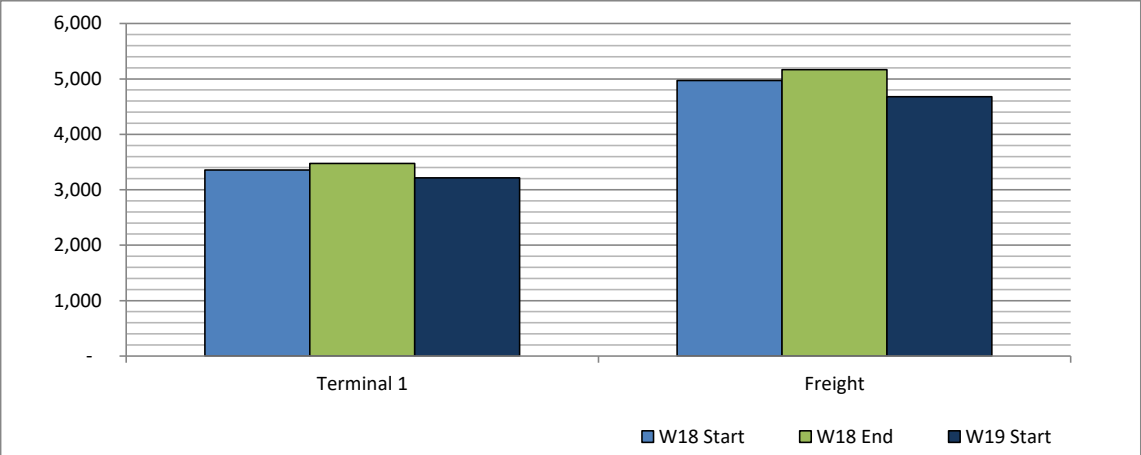


Schedule Snapshot

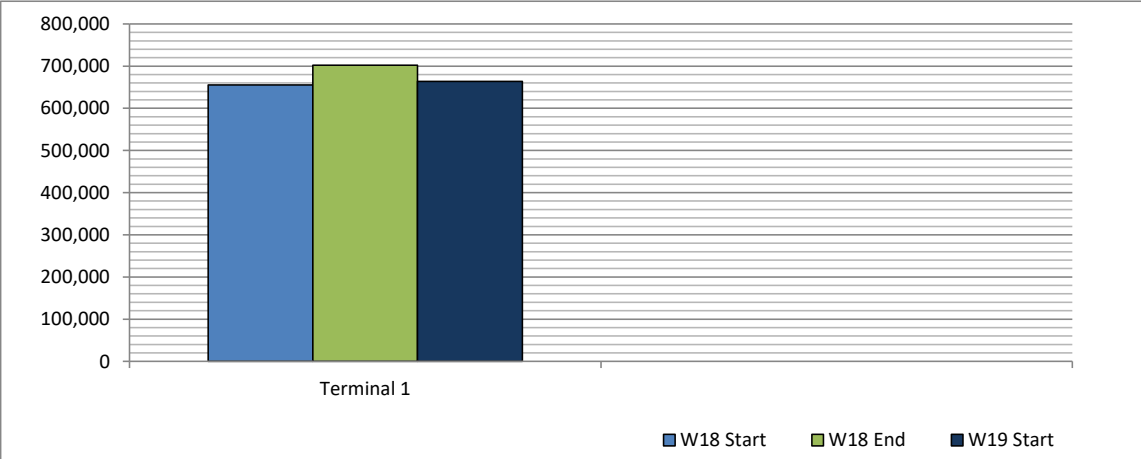
Full Season - Terminal Analysis



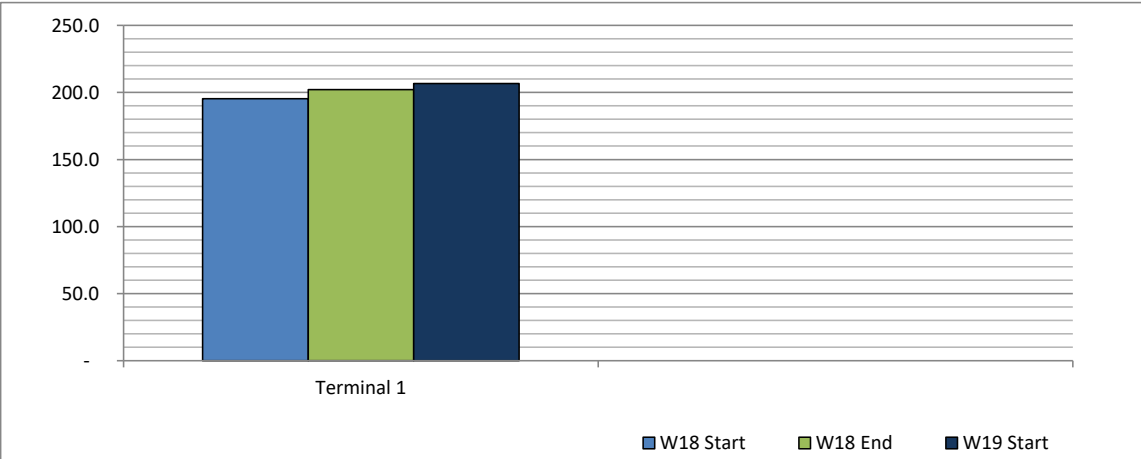
Air Transport Movements (total allocated for season)



Air Transport Movement Seats (total allocated for season)



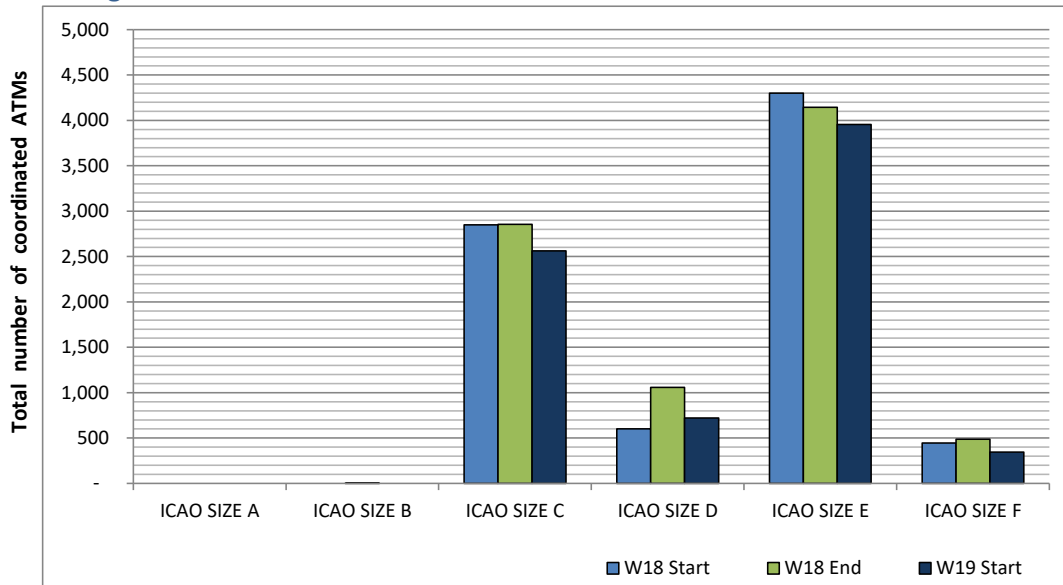
Seats per Air Transport Movement (average for season)



Full Season - Aircraft Size Analysis

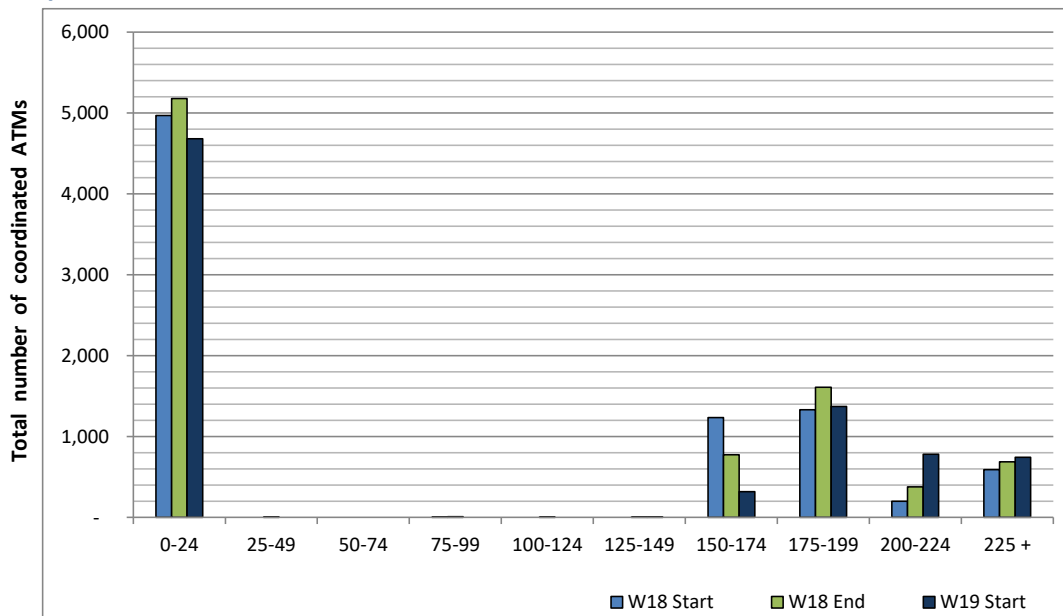


ICAO size designation



Note: See Glossary for definitions of ICAO SIZE groupings

Air Transport Movement seat distribution

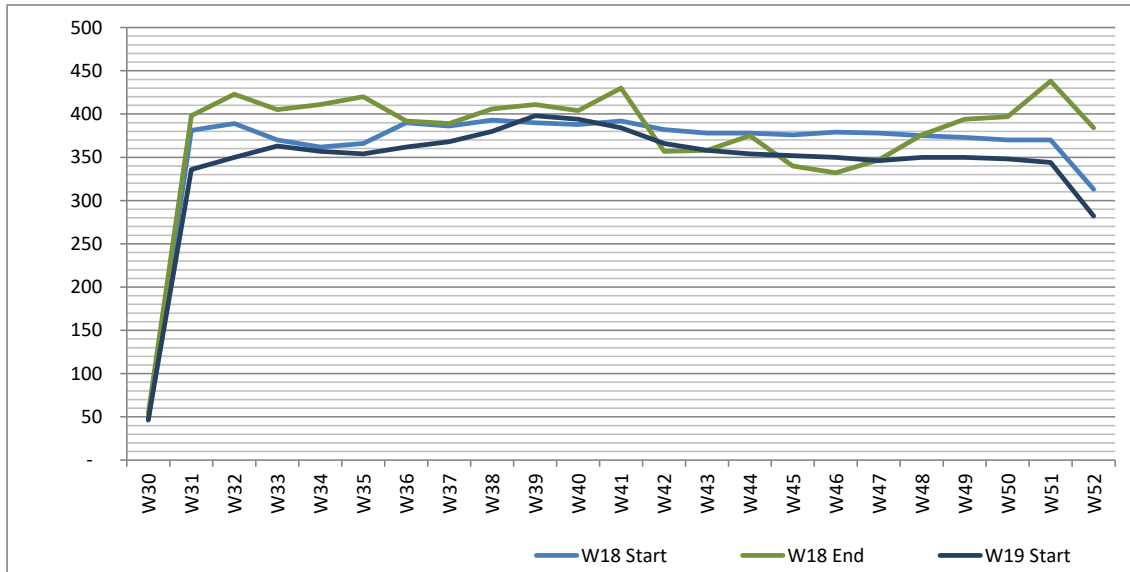


Note: FREIGHT-ONLY services with 0 seats are included in the first seat band '0-24'

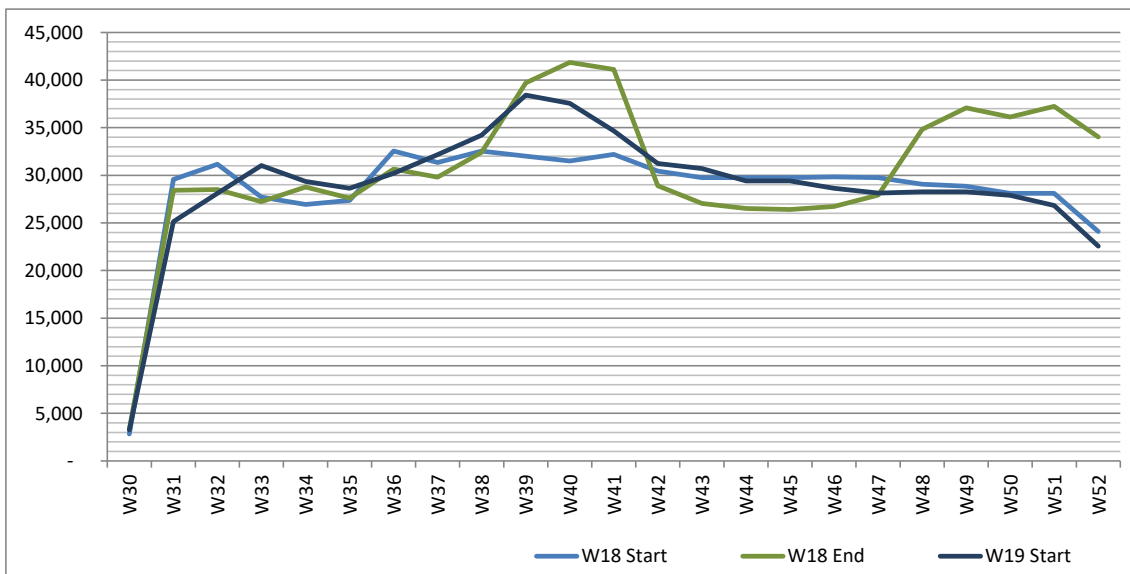
Full Season - Seasonality



Air Transport Movements by week of season



Air Transport Movement Seats by week of season



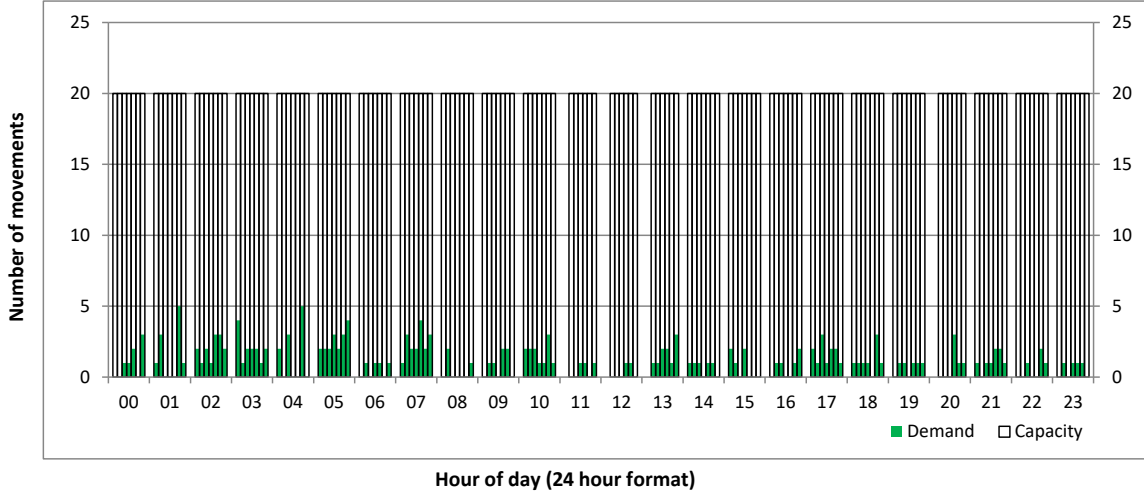
Peak Week - Hourly Runway Demand

Schedule: W19 Start



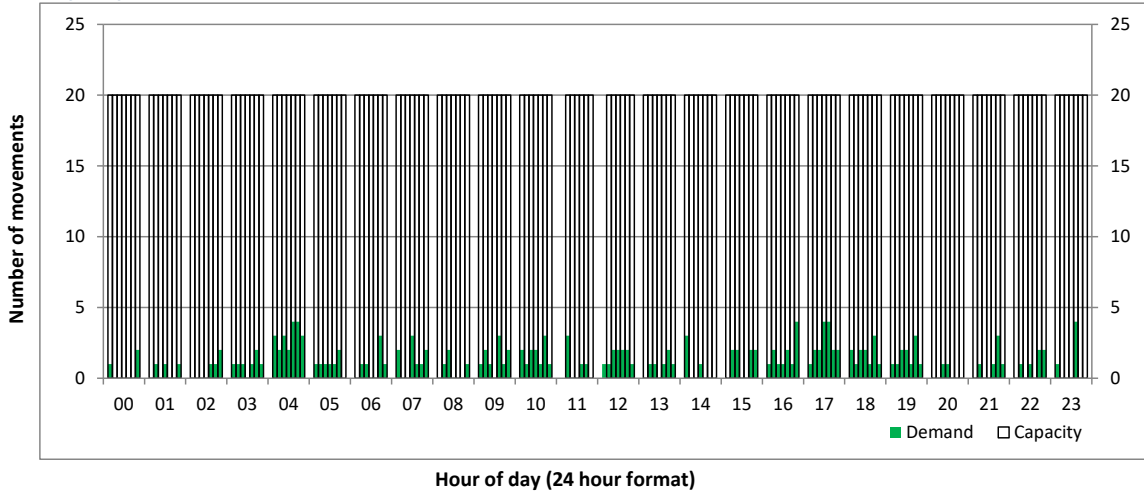
Hourly Arrival Demand

Time: UTC



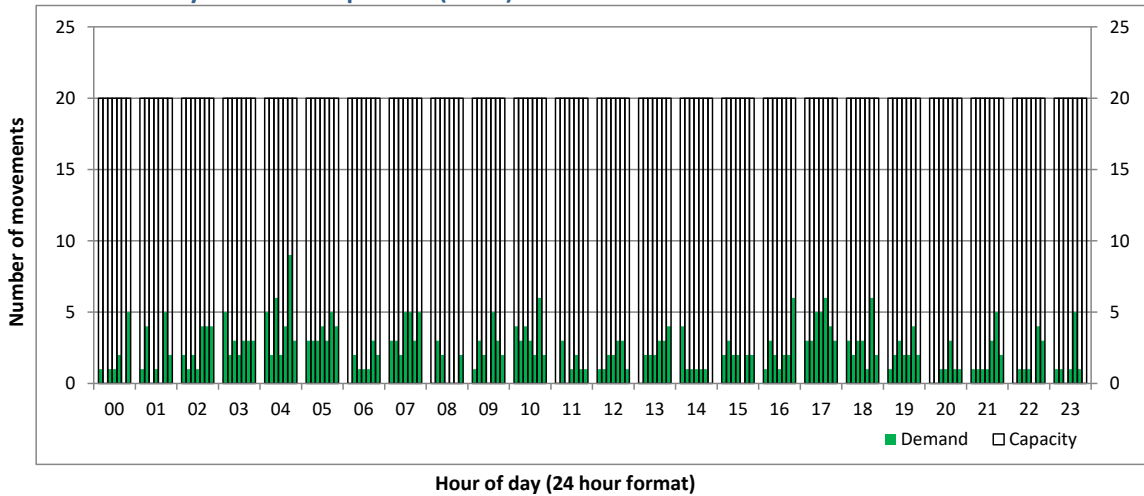
Hourly Departure Demand

Time: UTC



Combined Hourly Arrival & Departure (Total) Demand

Time: UTC



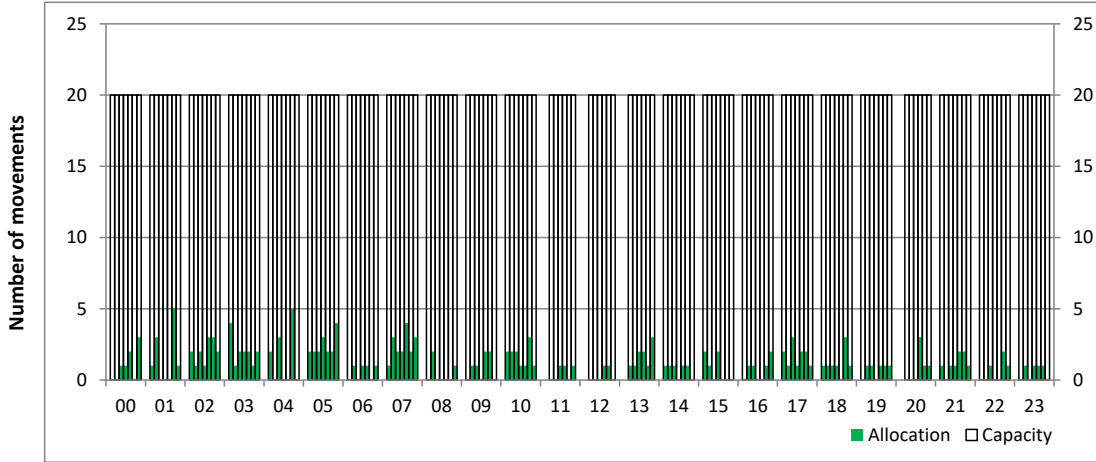
Peak Week - Hourly Runway Allocation

Schedule: W19 Start



Hourly Arrival Allocation

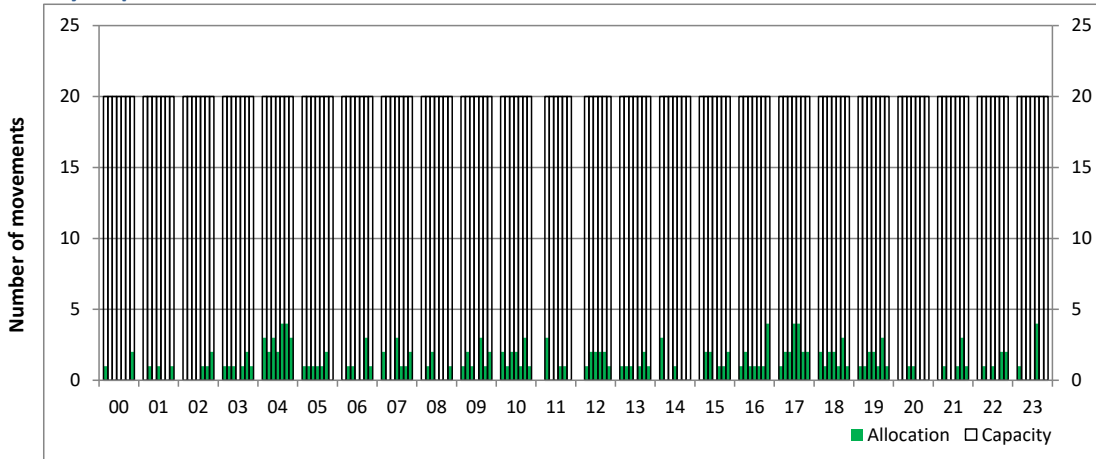
Time: UTC



Hour of day (24 hour format)

Hourly Departure Allocation

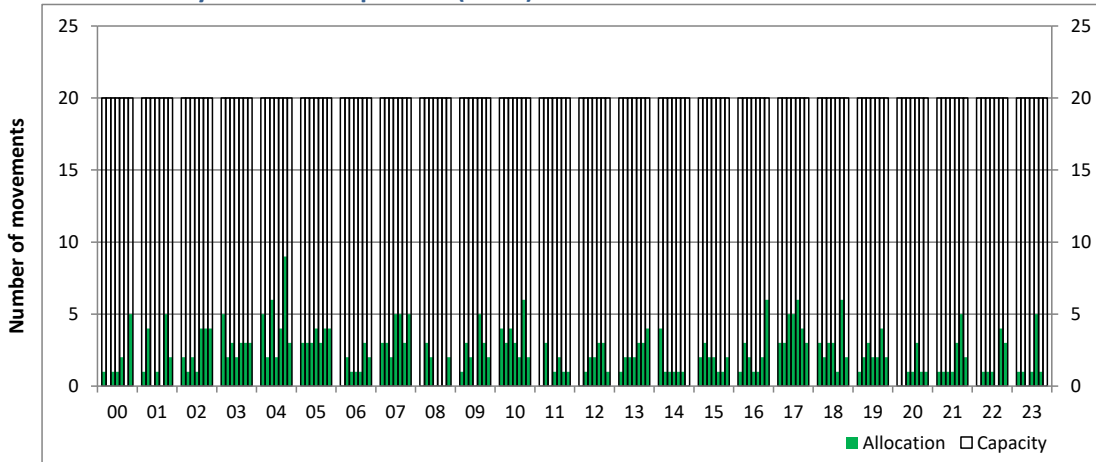
Time: UTC



Hour of day (24 hour format)

Combined Hourly Arrival & Departure (Total) Allocation

Time: UTC



Hour of day (24 hour format)

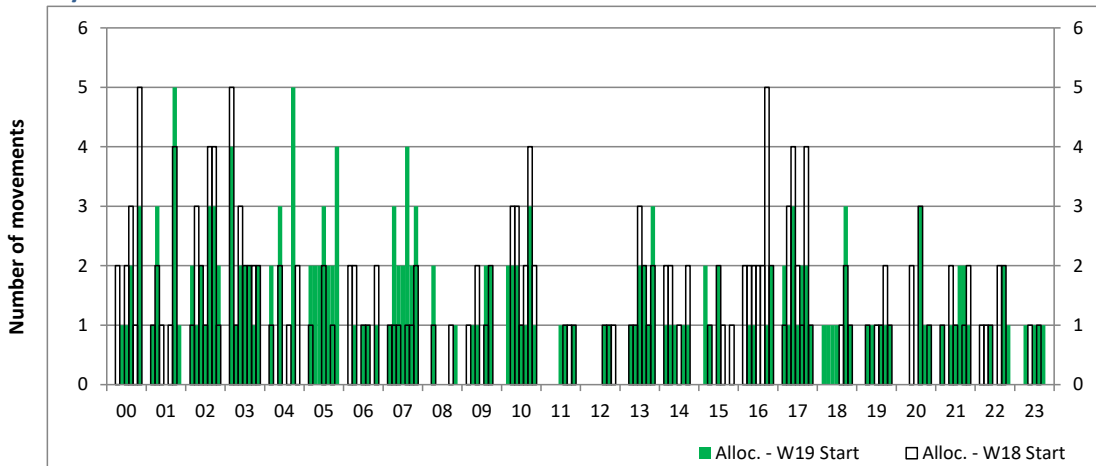
Peak Week - Runway Allocation Comparison



Comparison of W19 Start vs. W18 Start

Hourly Arrival Allocation

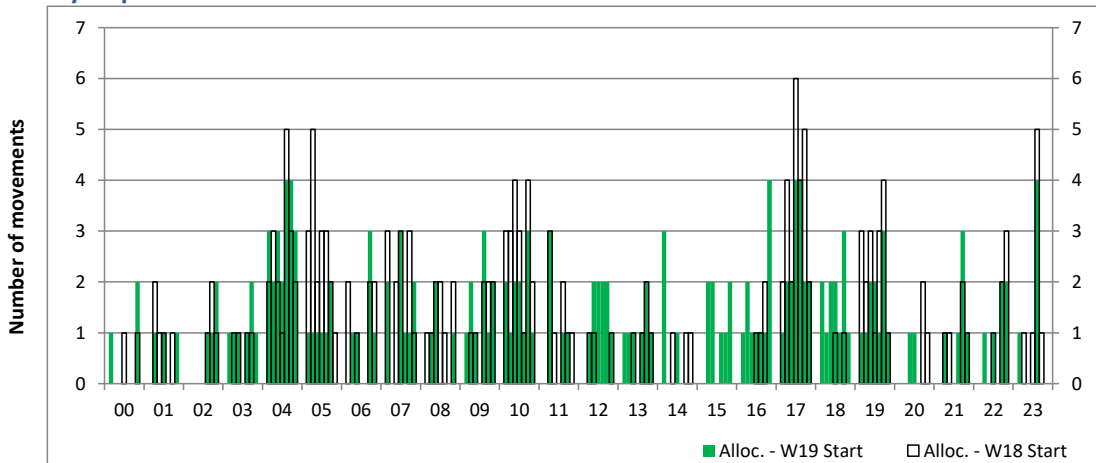
Time: UTC



Hour of day (24 hour format)

Hourly Departure Allocation

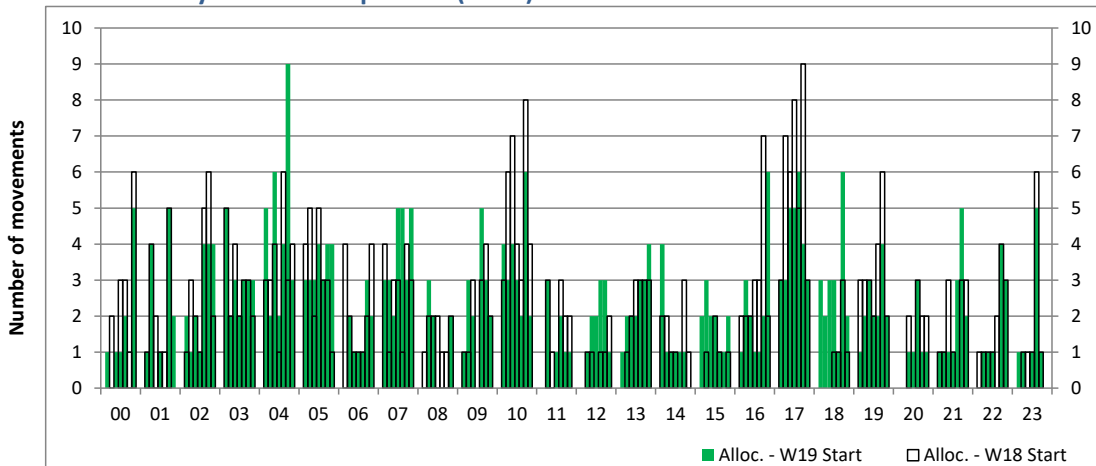
Time: UTC



Hour of day (24 hour format)

Combined Hourly Arrival & Departure (Total) Allocation

Time: UTC



Hour of day (24 hour format)

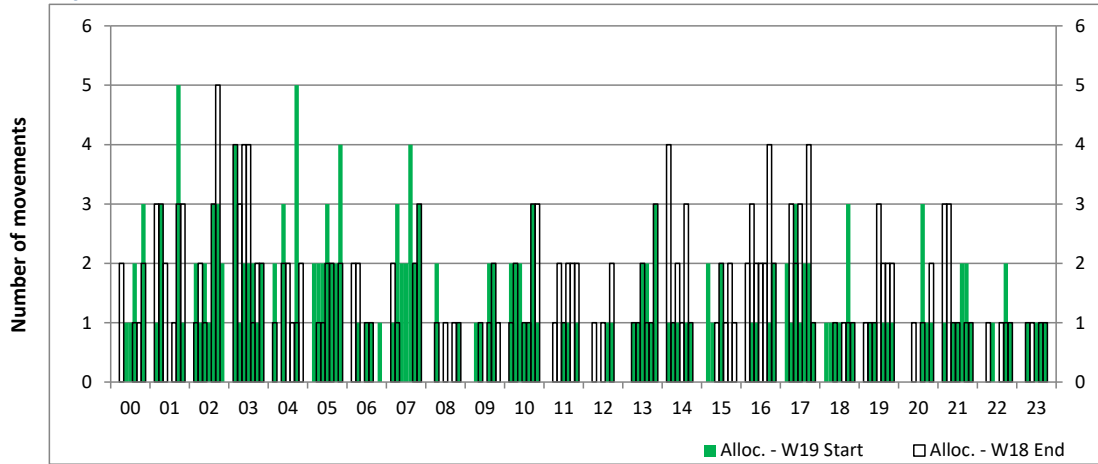
Peak Week - Runway Allocation Comparison



Comparison of W19 Start vs. W18 End

Hourly Arrival Allocation

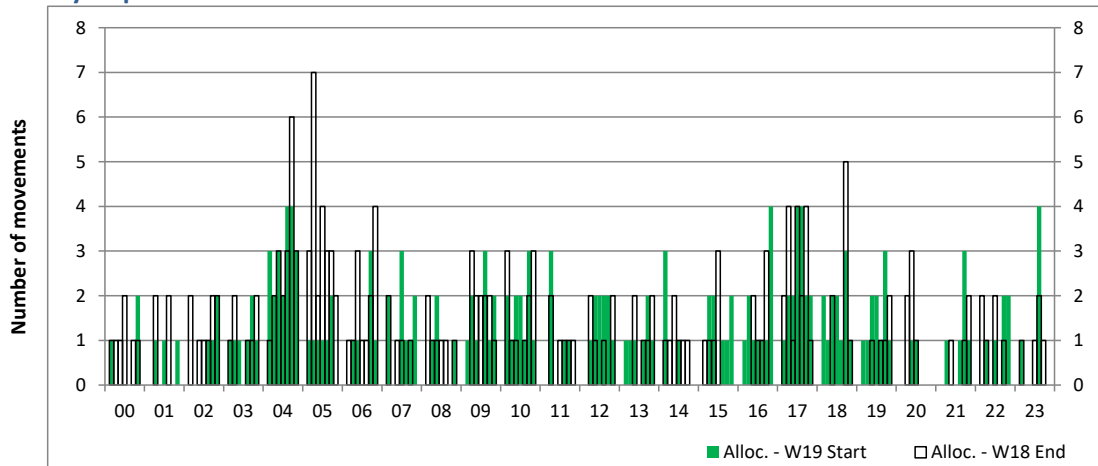
Time: UTC



Hour of day (24 hour format)

Hourly Departure Allocation

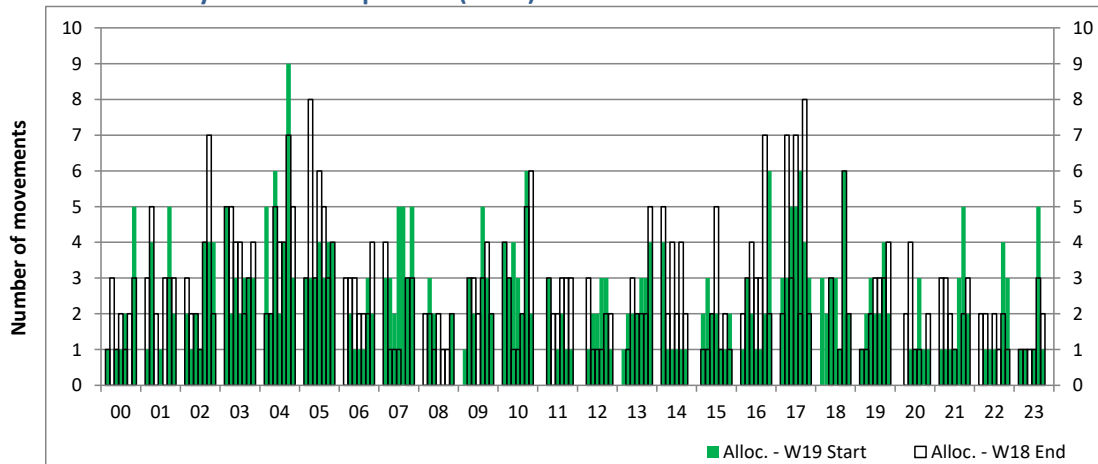
Time: UTC



Hour of day (24 hour format)

Combined Hourly Arrival & Departure (Total) Allocation

Time: UTC



Hour of day (24 hour format)

Peak Week - Movements Histogram

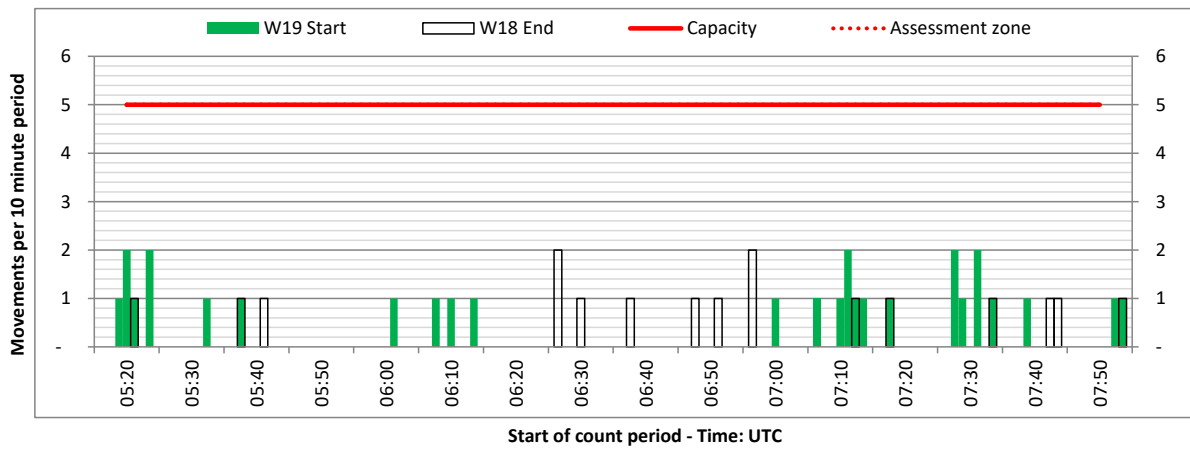
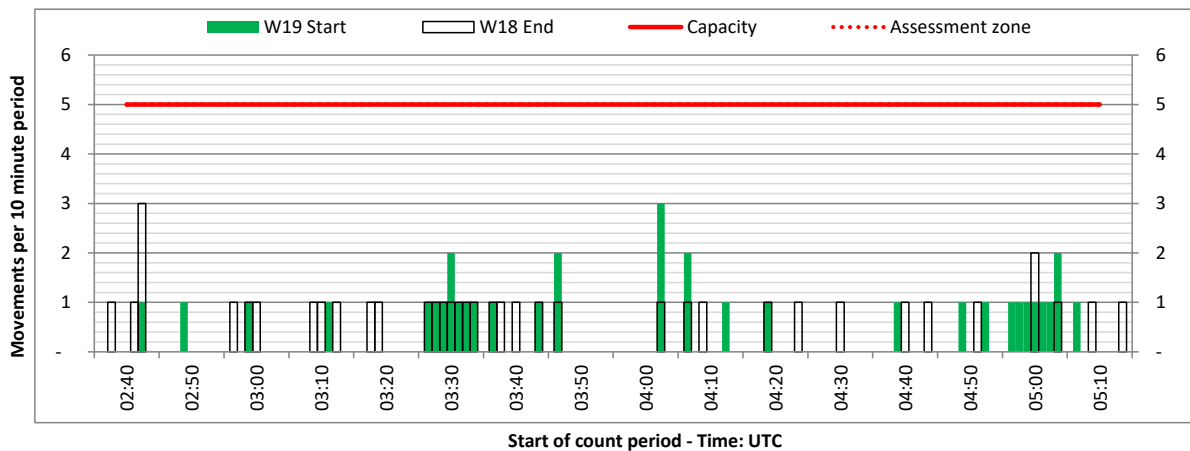
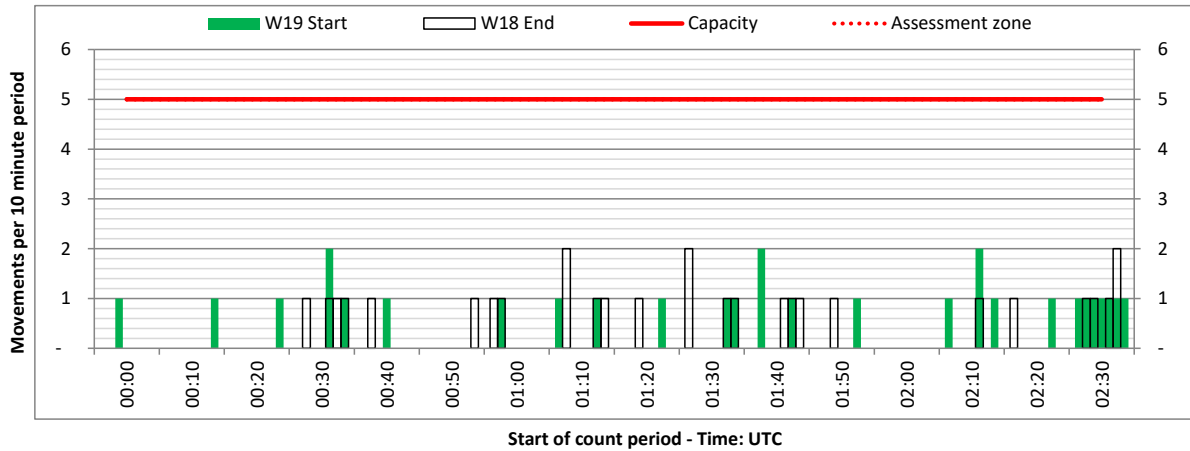
ARRIVAL - 10 minute count rolling every 10 mins (R10)



Terminals: All Terminals

Operators: All Operators

Days: 1234567



Peak Week - Movements Histogram

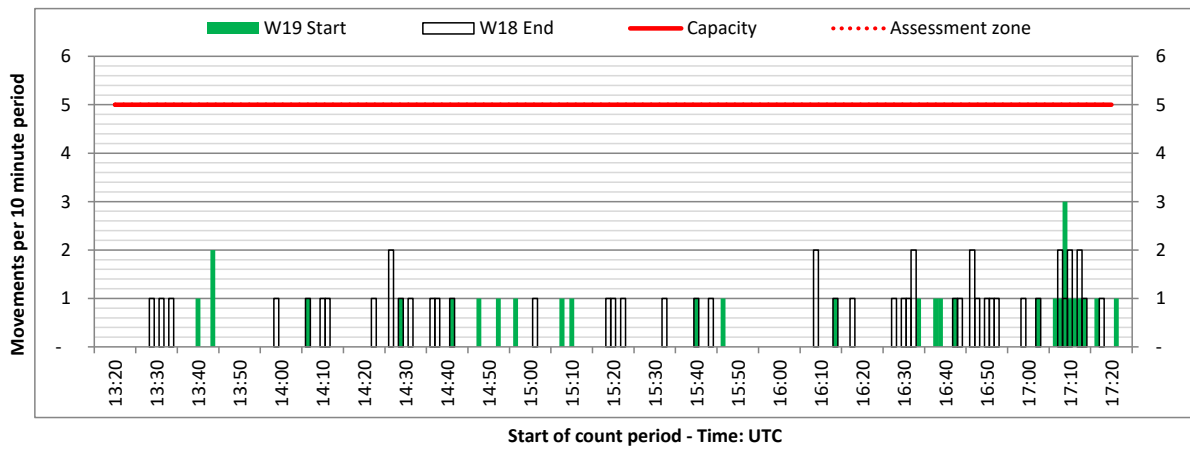
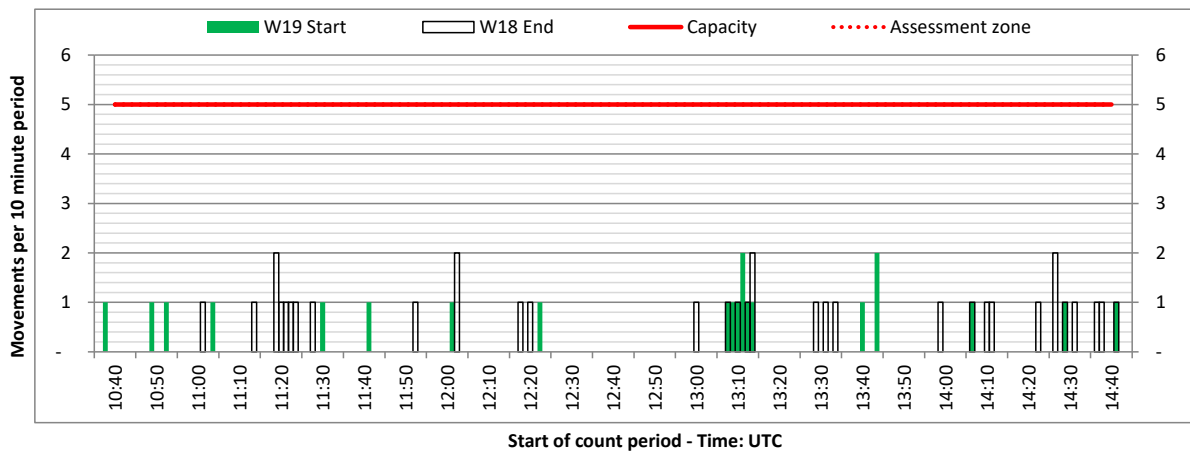
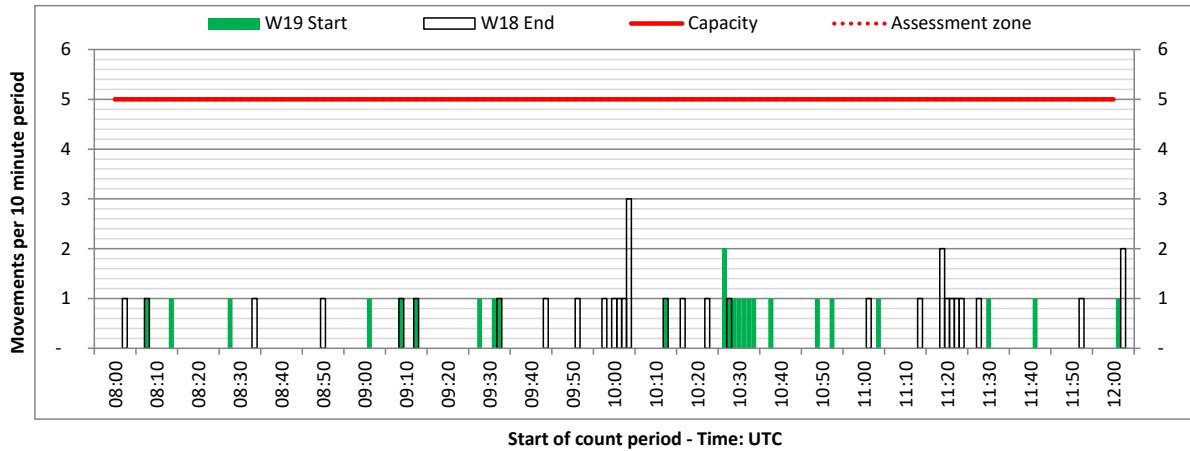
ARRIVAL - 10 minute count rolling every 10 mins (R10)



Terminals: All Terminals

Operators: All Operators

Days: 1234567



Peak Week - Movements Histogram

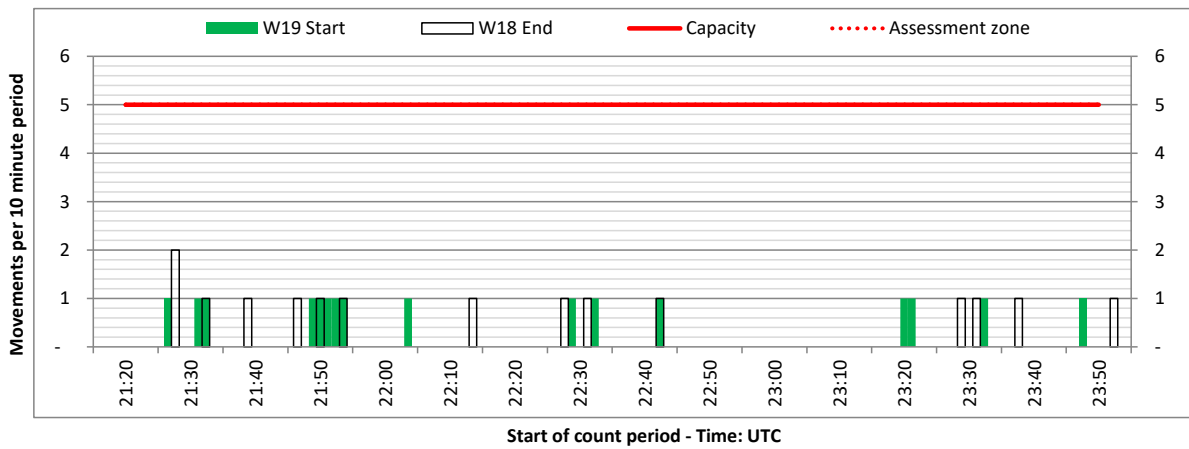
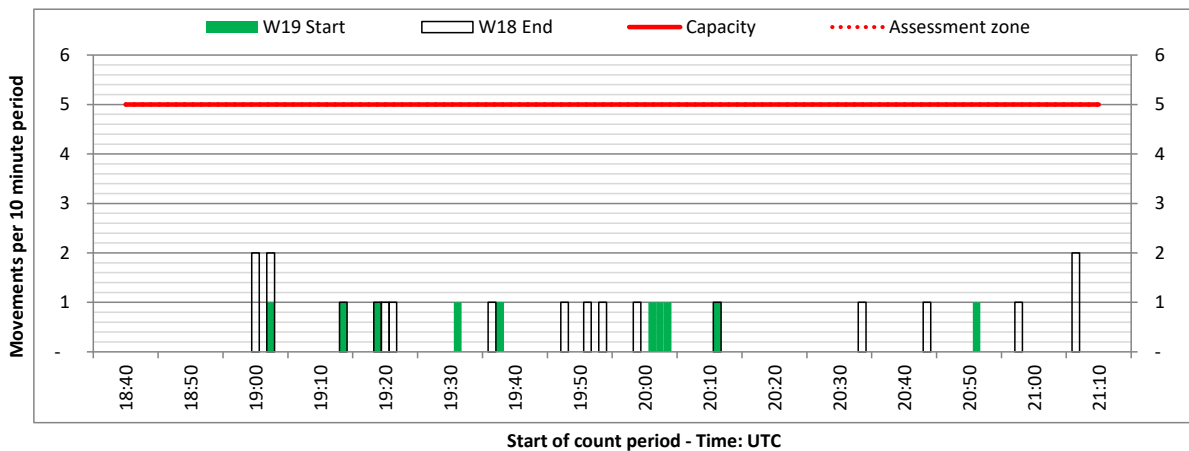
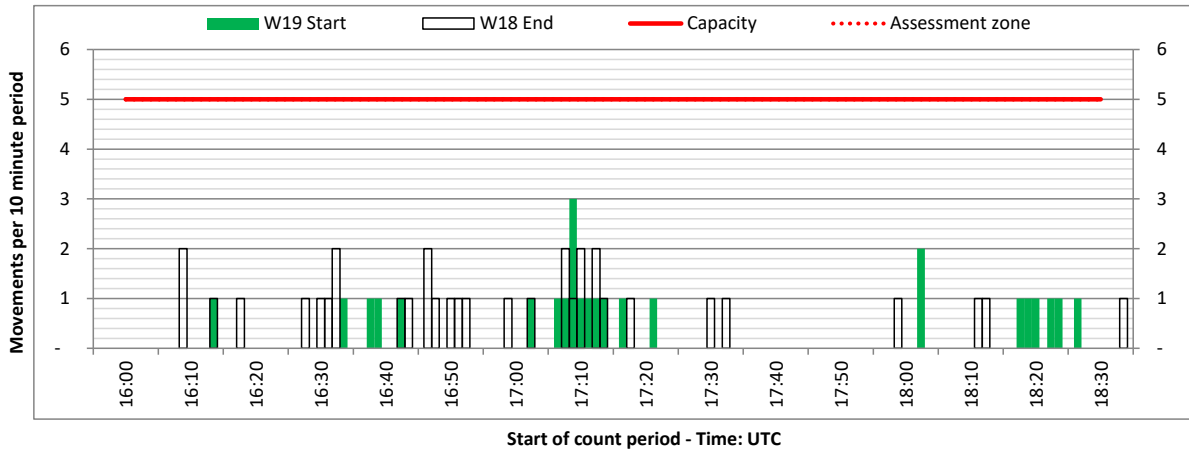
ARRIVAL - 10 minute count rolling every 10 mins (R10)



Terminals: All Terminals

Operators: All Operators

Days: 1234567



Peak Week - Movements Histogram

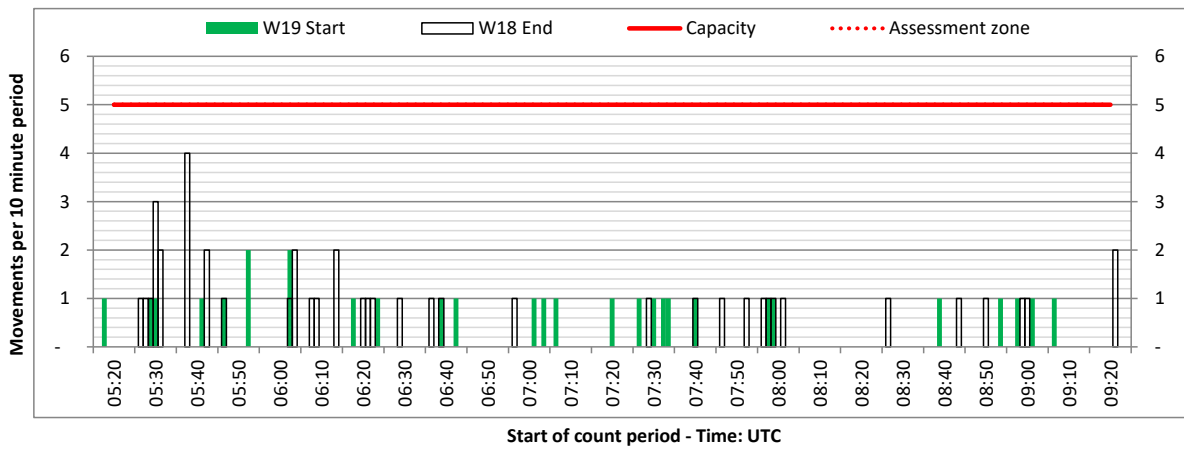
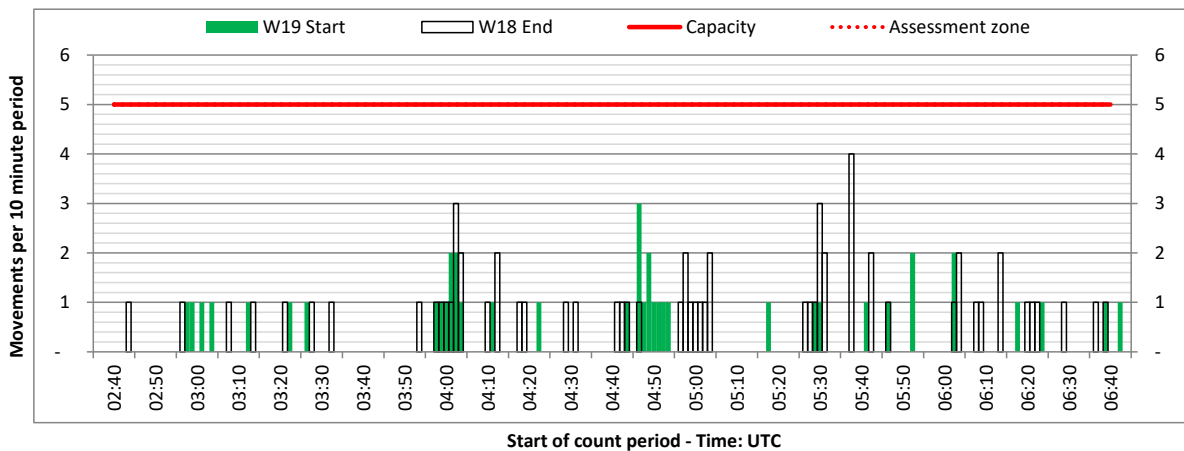
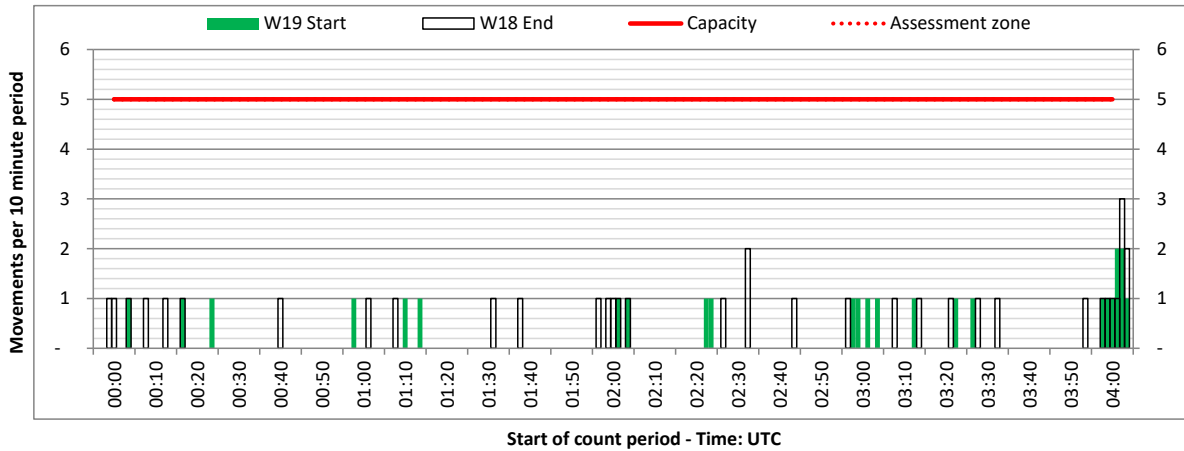
DEPARTURE - 10 minute count rolling every 10 mins (R10)



Terminals: All Terminals

Operators: All Operators

Days: 1234567



Peak Week - Movements Histogram

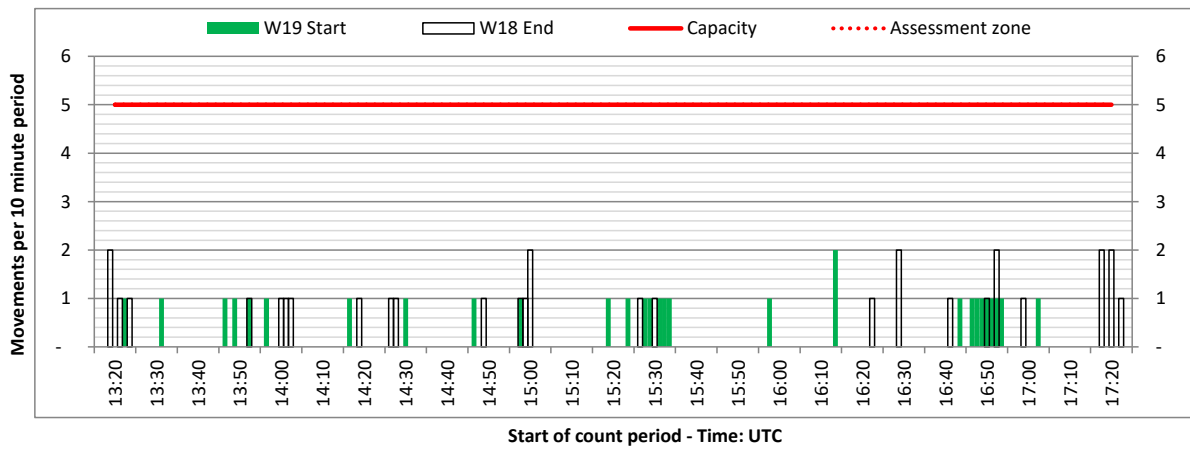
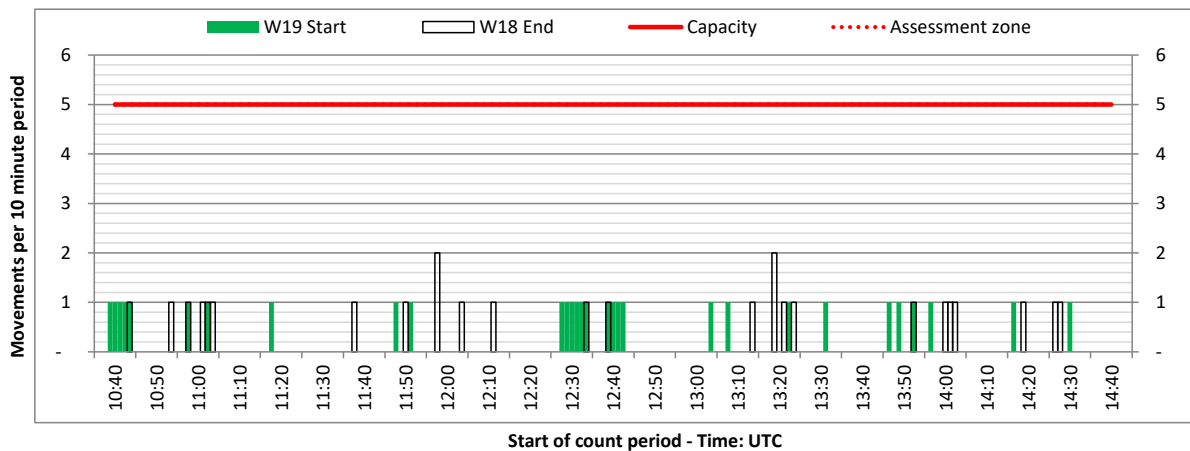
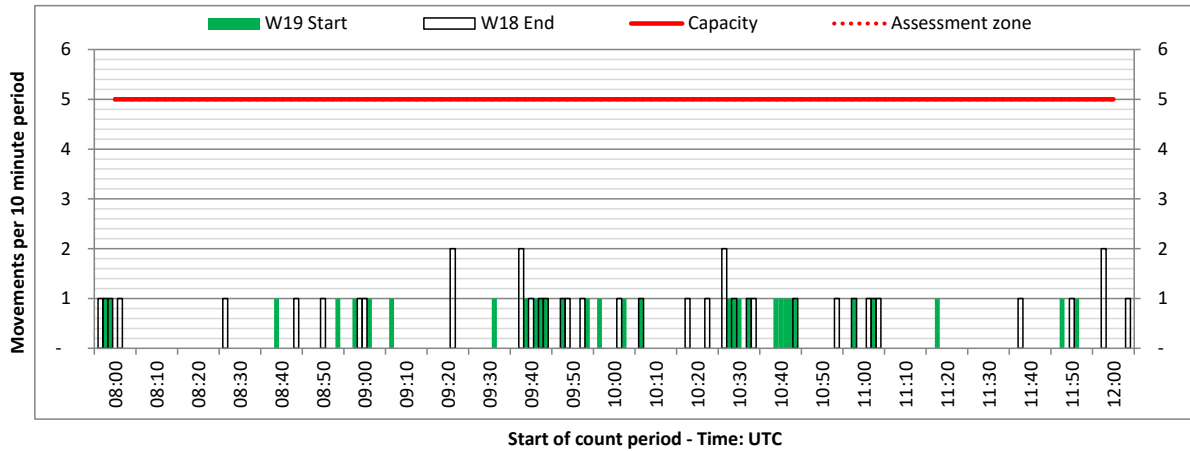
DEPARTURE - 10 minute count rolling every 10 mins (R10)



Terminals: All Terminals

Operators: All Operators

Days: 1234567



Peak Week - Movements Histogram

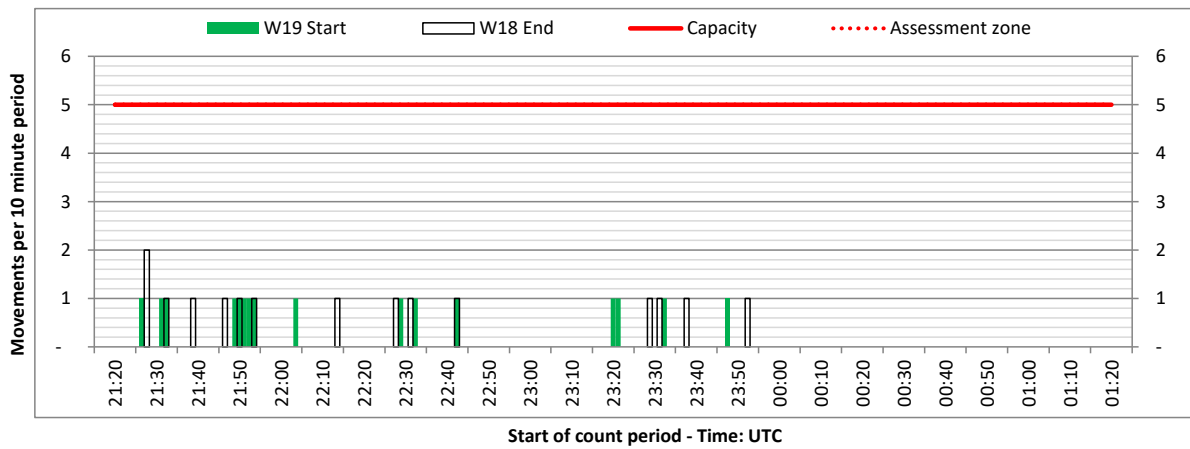
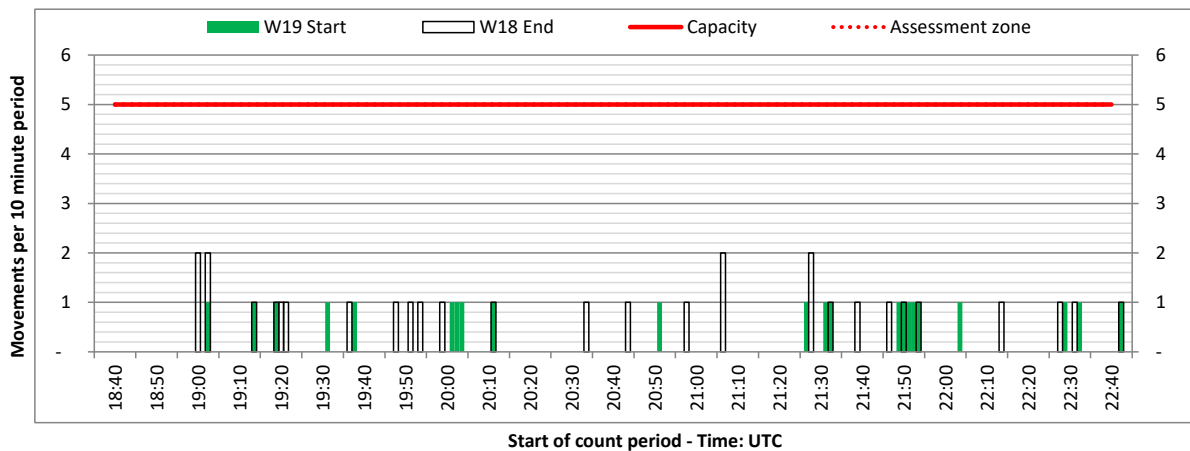
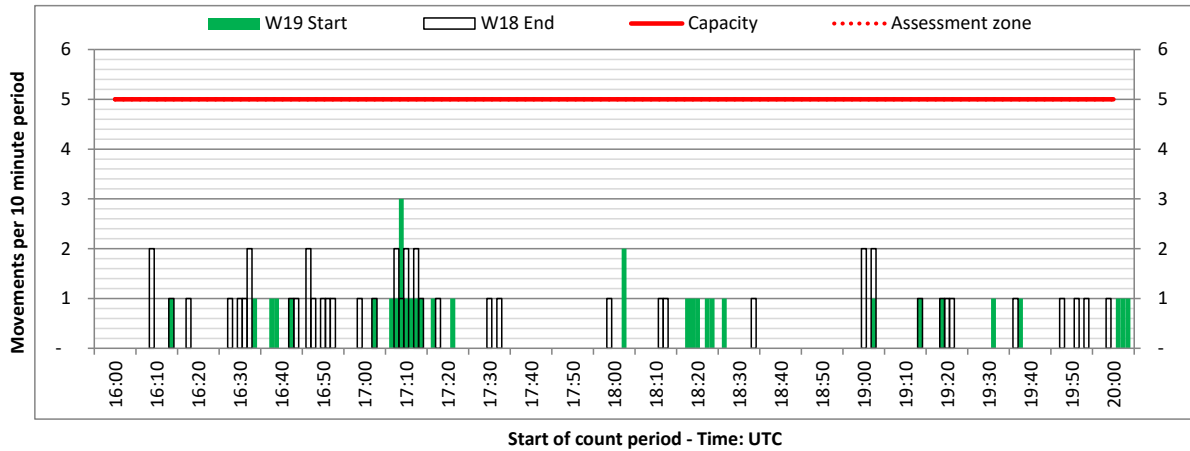
ARRIVAL - 10 minute count rolling every 10 mins (R10)



Terminals: All Terminals

Operators: All Operators

Days: 1234567



Peak Week - Passengers Histogram

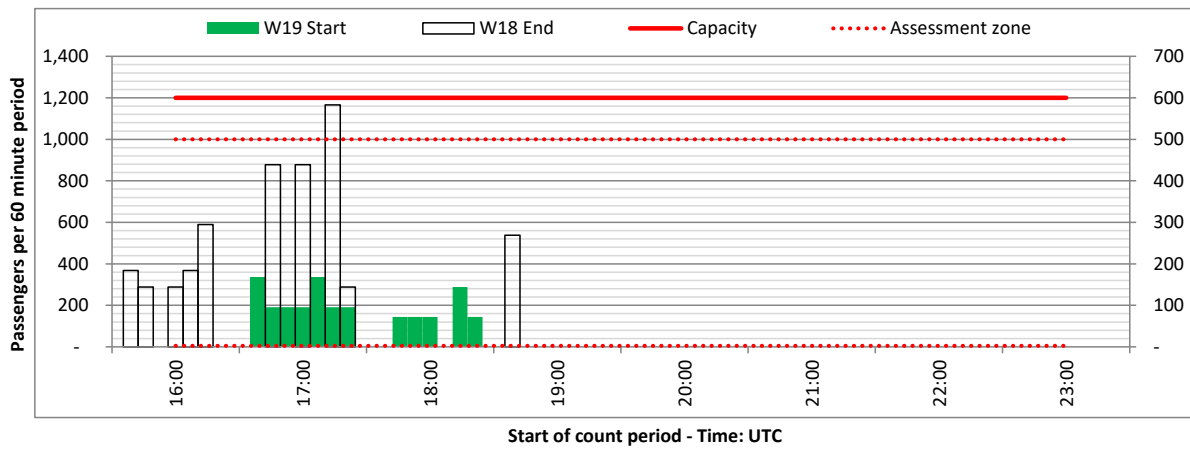
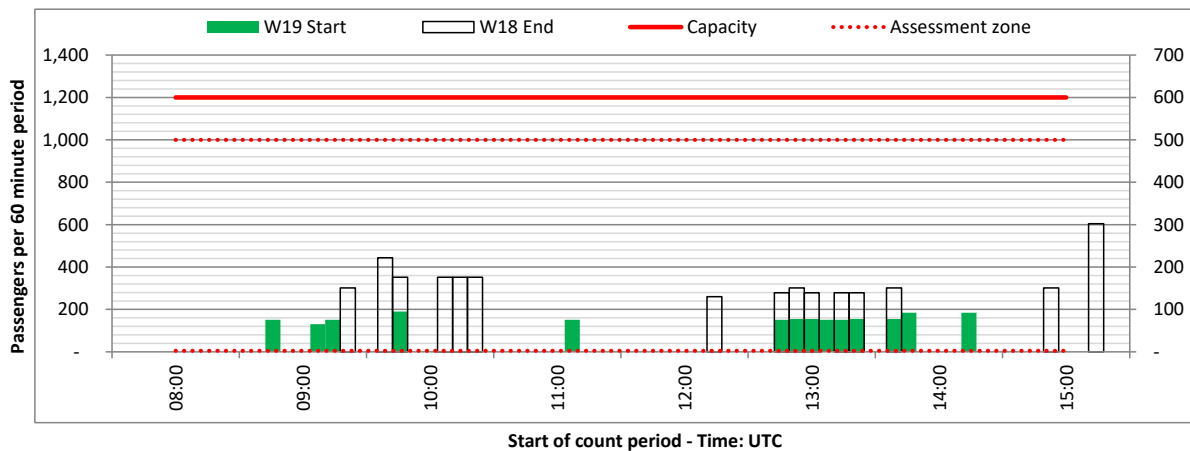
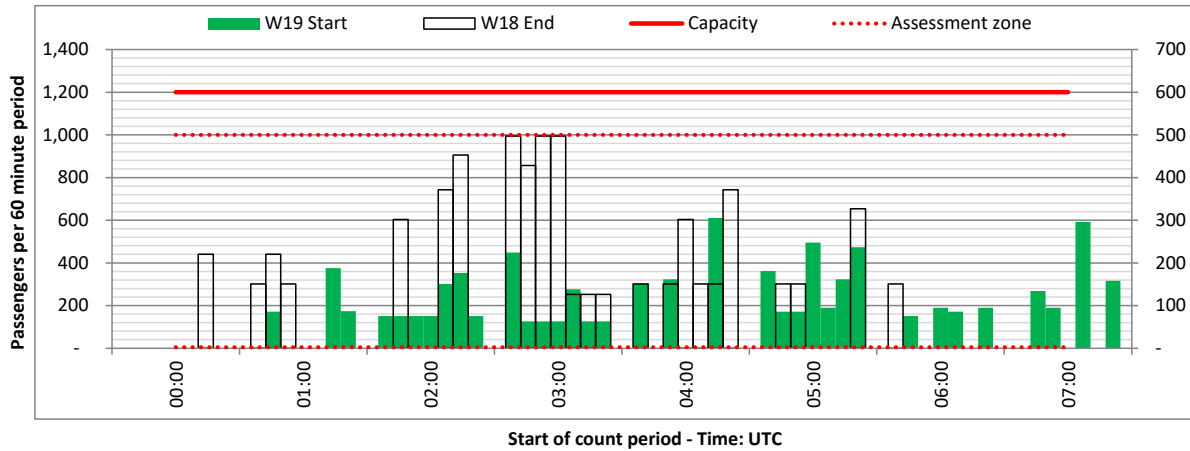
ARRIVAL - 60 minute count rolling every 60 mins (T60)



Terminals: All Terminals

Operators: All Operators

Days: 1234567



Peak Week - Passengers Histogram

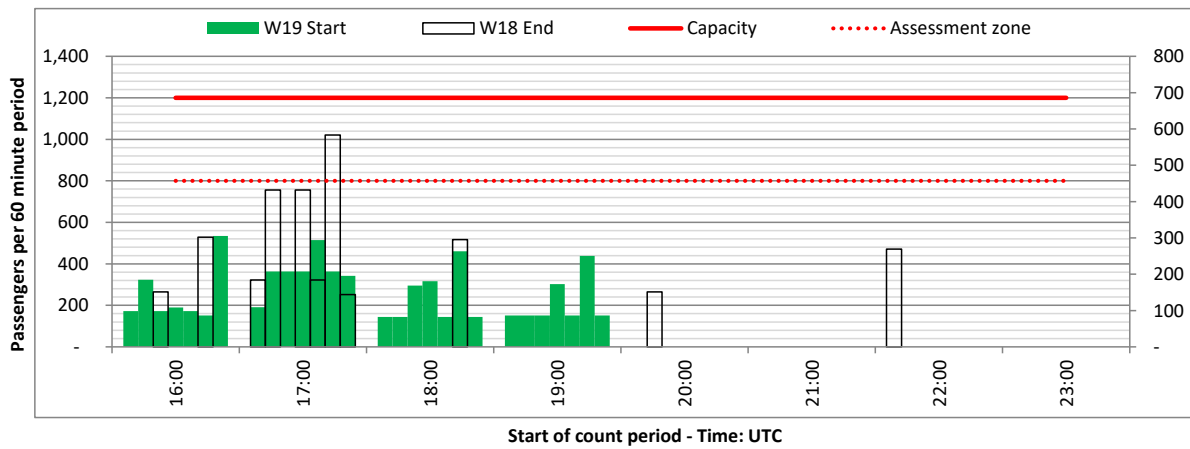
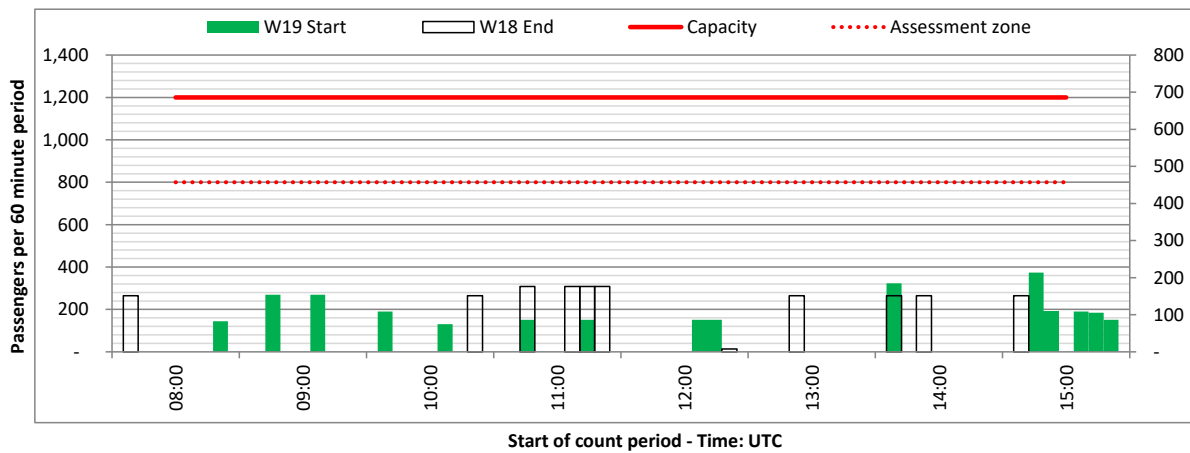
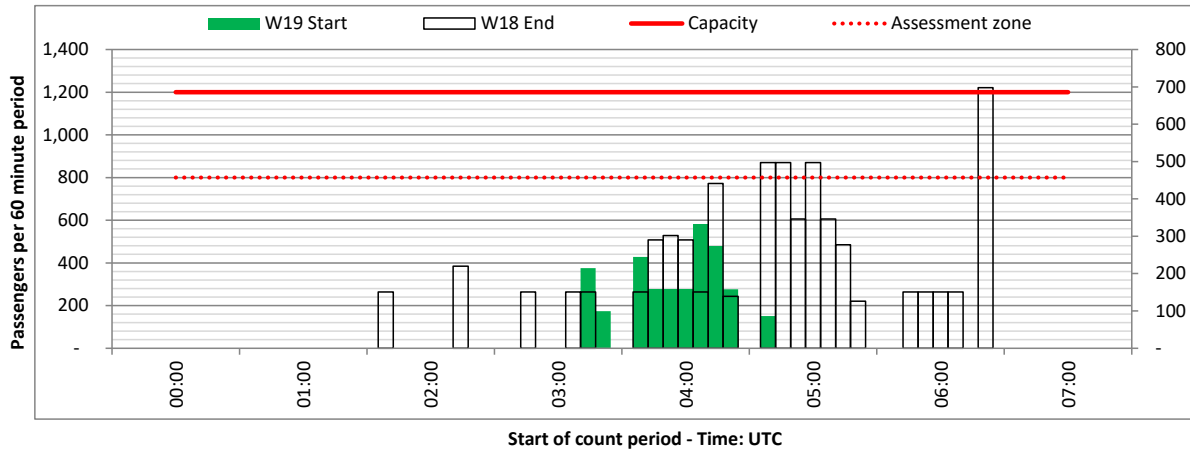
DEPARTURE - 60 minute count rolling every 60 mins (T60)



Terminals: All Terminals

Operators: All Operators

Days: 1234567



Air Transport Movement (ATM)	Any aircraft movement which is either a scheduled or chartered passenger or cargo flight.
Common Travel Area (CTA)	Origin or Destination is in Republic of Ireland or the Channel Islands.
Demand	Unconstrained demand before any schedule adjustments have been made.
"Fill-in"	These are gaps in a historic series of slots which the carrier requests to "Fill-in" at Initial Submissions - Fill-ins will be recognisably part of the historic series and will have the same flight details to qualify as a "Fill-in".
Hist (SHL)	Snapshot of historic schedule rolled over from end of the previous equivalent season - as advised to airlines in the SHLs.
ICAO Size A	Aircraft with wingspan between 0.00m - 14.99m.
ICAO Size B	Aircraft with wingspan between 15.00m - 23.99m.
ICAO Size C	Aircraft with wingspan between 24.00m - 35.99m.
ICAO Size D	Aircraft with wingspan between 36.00m - 51.99m.
ICAO Size E	Aircraft with wingspan between 52.00m - 64.99m.
ICAO Size F	Aircraft with wingspan between 65.00m - 80.00m.
Init Coord	Snapshot of schedule immediately after Initial Coordination is completed - as advised to airlines in the SALs.
Passenger Air Transport Movement (PATM)	Any aircraft movement which is either a scheduled or chartered passenger flight.
Start	Snapshot of schedule shortly before the start of the scheduling season (exact date given below where used).
Time: Local	Times shown are in LOCAL time for the airport/scheduling season.
Time: UTC	Times shown are in Universal Time Constant (UTC).

Data snapshot descriptions

W18 Start	W18 schedule as cleared on Mon 08-Oct-18.
W18 End	W18 schedule as cleared on Mon 09-Sep-19.
W19 Start	W19 schedule as cleared on Mon 09-Sep-19.

Peak Week	Peak week for W18 is Mon 17-Dec-18 to Sun 23-Dec-18. Peak week for W19 is Mon 16-Dec-19 to Sun 22-Dec-19.
------------------	--

For ACL use

	Airport-Season-Branch-Resource	From date	To date	Time
Full Season Rep 1	DWC-W18-SOS Report-Standard	Sun 28-Oct-2018	Sat 30-Mar-2019	UTC
Full Season Rep 2	DWC-W18-End-Standard	Sun 28-Oct-2018	Sat 30-Mar-2019	UTC
Full Season Rep 3	DWC-W19-SOS Report-Standard	Sun 27-Oct-2019	Sat 28-Mar-2020	UTC
	Airport-Season-Branch-Resource	From date	To date	Time
Peak Week Rep 1	DWC-W18-SOS Report-Standard	Mon 17-Dec-2018	Sun 23-Dec-2018	UTC
Peak Week Rep 2	DWC-W18-End-Standard	Mon 05-Nov-2018	Sun 11-Nov-2018	UTC
Peak Week Rep 3	DWC-W19-SOS Report-Standard	Mon 16-Dec-2019	Sun 22-Dec-2019	UTC