

# Dubai International Airport (DXB)

## Winter 2019/20 (W19)



### Start of Season Report

Report Date: Thu 12-Sep-2019

#### Headlines

	W19 Start	vs. W18 Start	vs. W18 End
Total Air Transport Movements (Passenger & Freight)	<b>184,541</b>	▼ <b>-5.5%</b>	▲ <b>9.2%</b>
Total Passenger Air Transport Movements	<b>180,933</b>	▼ <b>-5.5%</b>	▲ <b>9.2%</b>
Total Passenger Air Transport Movement Seats	<b>52,864,850</b>	▼ <b>-7.8%</b>	▲ <b>7.1%</b>
Average Seats per Passenger Air Transport Movement	<b>292</b>	▼ <b>-2.4%</b>	▼ <b>-1.9%</b>
Percentage of allocated slots cleared as requested (OK)	<b>96%</b>		

#### Contents

Page	Content
2	Runway Scheduling Limits
3	ATM Allocation by Operator (Full season and Peak Week Comparison)
4	Peak Week - Allocation and Slot Adjustment Distribution by Operator
5	Significant Route Changes
6	Full Season - ATM Analysis
7	Full Season - PATM Seats Analysis
8	Full Season - Terminal Analysis
9	Full Season - Aircraft Size Analysis
10	Full Season - Seasonality
11	Peak Week - Hourly Runway Demand
12	Peak Week - Hourly Runway Allocation
13	Peak Week - Hourly Runway Allocation Comparison (W19 Start vs. W18 Start)
14	Peak Week - Hourly Runway Allocation Comparison (W19 Start vs. W18 End)
15	Peak Week - Declaration Usage Analysis
19	Peak Week Histogram - Arrival Movements (R10) - All Terminals - All Operators
20	Peak Week Histogram - Arrival Movements (R10) - All Terminals - All Operators
21	Peak Week Histogram - Arrival Movements (R10) - All Terminals - All Operators
22	Peak Week Histogram - Departure Movements (R10) - All Terminals - All Operators
23	Peak Week Histogram - Departure Movements (R10) - All Terminals - All Operators
24	Peak Week Histogram - Departure Movements (R10) - All Terminals - All Operators
25	Peak Week Histogram - Arrival Passengers (T60/30) - 1I - All Operators
26	Peak Week Histogram - Departure Passengers (T60/30) - 1I - All Operators
27	Peak Week Histogram - Arrival Passengers (T60/30) - 2I - All Operators
28	Peak Week Histogram - Departure Passengers (T60/30) - 2I - All Operators
29	Peak Week Histogram - Arrival Passengers (T60/30) - 3I - All Operators
30	Peak Week Histogram - Departure Passengers (T60/30) - 3I - All Operators
31	Peak Week - Primary Constraints by Terminal
32	Peak Week - Code F Arrivals and Departures
33	Peak Week - Nac Utilisation View
31	Glossary

W18 scheduling season runs from Sun 28-Oct-2018 to Sat 30-Mar-2019 (154 days).

W19 scheduling season runs from Sun 27-Oct-2019 to Sat 28-Mar-2020 (154 days).

#### Disclaimer

No warranty whether expressed or implied as to the completeness, accuracy, fitness for purpose, or satisfactory quality is given by ACL regarding the information in this report, which is provided by third parties. Accordingly, ACL excludes all liability with regard to such data.

The contents of this report may not be reproduced without the written consent of ACL.

# Runway Scheduling Limits



## Declared Hourly Movement Capacity

W18 Arrivals								Change: W18 to W19							W19 Arrivals								
Hour	Mon	Tue	Wed	Thu	Fri	Sat	Sun	Hour	Mon	Tue	Wed	Thu	Fri	Sat	Sun	Hour	Mon	Tue	Wed	Thu	Fri	Sat	Sun
UTC	1	2	3	4	5	6	7	UTC	1	2	3	4	5	6	7	UTC	1	2	3	4	5	6	7
00	34	34	34	34	34	34	34	00								00	34	34	34	34	34	34	34
01	37	37	37	37	37	37	37	01								01	37	37	37	37	37	37	37
02	37	37	37	37	37	37	37	02								02	37	37	37	37	37	37	37
03	28	28	28	28	28	28	28	03								03	28	28	28	28	28	28	28
04	25	25	25	25	25	25	25	04								04	25	25	25	25	25	25	25
05	25	25	25	25	25	25	25	05								05	25	25	25	25	25	25	25
06	25	25	25	25	25	25	25	06								06	25	25	25	25	25	25	25
07	35	35	35	35	35	35	35	07								07	35	35	35	35	35	35	35
08	36	36	36	36	36	36	36	08								08	36	36	36	36	36	36	36
09	35	35	35	35	35	35	35	09								09	35	35	35	35	35	35	35
10	26	26	26	26	26	26	26	10								10	26	26	26	26	26	26	26
11	20	20	20	20	20	20	20	11								11	20	20	20	20	20	20	20
12	20	20	20	20	20	20	20	12								12	20	20	20	20	20	20	20
13	22	22	22	22	22	22	22	13								13	22	22	22	22	22	22	22
14	29	29	29	29	29	29	29	14								14	29	29	29	29	29	29	29
15	35	35	35	35	35	35	35	15								15	35	35	35	35	35	35	35
16	35	35	35	35	35	35	35	16								16	35	35	35	35	35	35	35
17	36	36	36	36	36	36	36	17								17	36	36	36	36	36	36	36
18	34	34	34	34	34	34	34	18								18	34	34	34	34	34	34	34
19	35	35	35	35	35	35	35	19								19	35	35	35	35	35	35	35
20	35	35	35	35	35	35	35	20								20	35	35	35	35	35	35	35
21	26	26	26	26	26	26	26	21								21	26	26	26	26	26	26	26
22	24	24	24	24	24	24	24	22								22	24	24	24	24	24	24	24
23	23	23	23	23	23	23	23	23								23	23	23	23	23	23	23	23

W18 Departures								Change: W18 to W19							W19 Departures								
Hour	Mon	Tue	Wed	Thu	Fri	Sat	Sun	Hour	Mon	Tue	Wed	Thu	Fri	Sat	Sun	Hour	Mon	Tue	Wed	Thu	Fri	Sat	Sun
UTC	1	2	3	4	5	6	7	UTC	1	2	3	4	5	6	7	UTC	1	2	3	4	5	6	7
00	26	26	26	26	26	26	26	00								00	26	26	26	26	26	26	26
01	22	22	22	22	22	22	22	01								01	22	22	22	22	22	22	22
02	22	22	22	22	22	22	22	02								02	22	22	22	22	22	22	22
03	40	40	40	40	40	40	40	03								03	40	40	40	40	40	40	40
04	41	41	41	41	41	41	41	04								04	41	41	41	41	41	41	41
05	41	41	41	41	41	41	41	05								05	41	41	41	41	41	41	41
06	40	40	40	40	40	40	40	06								06	40	40	40	40	40	40	40
07	24	24	24	24	24	24	24	07								07	24	24	24	24	24	24	24
08	30	30	30	30	30	30	30	08								08	30	30	30	30	30	30	30
09	33	33	33	33	33	33	33	09								09	33	33	33	33	33	33	33
10	36	36	36	36	36	36	36	10								10	36	36	36	36	36	36	36
11	25	25	25	25	25	25	25	11								11	25	25	25	25	25	25	25
12	25	25	25	25	25	25	25	12								12	25	25	25	25	25	25	25
13	25	25	25	25	25	25	25	13								13	25	25	25	25	25	25	25
14	31	31	31	31	31	31	31	14								14	31	31	31	31	31	31	31
15	29	29	29	29	29	29	29	15								15	29	29	29	29	29	29	29
16	25	25	25	25	25	25	25	16								16	25	25	25	25	25	25	25
17	27	27	27	27	27	27	27	17								17	27	27	27	27	27	27	27
18	27	27	27	27	27	27	27	18								18	27	27	27	27	27	27	27
19	23	23	23	23	23	23	23	19								19	23	23	23	23	23	23	23
20	22	22	22	22	22	22	22	20								20	22	22	22	22	22	22	22
21	26	26	26	26	26	26	26	21								21	26	26	26	26	26	26	26
22	39	39	39	39	39	39	39	22								22	39	39	39	39	39	39	39
23	37	37	37	37	37	37	37	23								23	37	37	37	37	37	37	37

W18 Totals								Change: W18 to W19							W19 Totals								
Hour	Mon	Tue	Wed	Thu	Fri	Sat	Sun	Hour	Mon	Tue	Wed	Thu	Fri	Sat	Sun	Hour	Mon	Tue	Wed	Thu	Fri	Sat	Sun
UTC	1	2	3	4	5	6	7	UTC	1	2	3	4	5	6	7	UTC	1	2	3	4	5	6	7
00	60	60	60	60	60	60	60	00								00	60	60	60	60	60	60	60
01	59	59	59	59	59	59	59	01								01	59	59	59	59	59	59	59
02	59	59	59	59	59	59	59	02								02	59	59	59	59	59	59	59
03	65	65	65	65	65	65	65	03								03	65	65	65	65	65	65	65
04	66	66	66	66	66	66	66	04								04	66	66	66	66	66	66	66
05	66	66	66	66	66	66	66	05								05	66	66	66	66	66	66	66
06	65	65	65	65	65	65	65	06								06	65	65	65	65	65	65	65
07	59	59	59	59	59	59	59	07								07	59	59	59	59	59	59	59
08	66	66	66	66	66	66	66	08								08	66	66	66	66	66	66	66
09	66	66	66	66	66	66	66	09								09	66	66	66	66	66	66	66
10	57	57	57	57	57	57	57	10								10	57	57	57	57	57	57	57
11	40	40	40	40	40	40	40	11								11	40	40	40	40	40	40	40
12	40	40	40	40	40	40	40	12								12	40	40	40	40	40	40	40
13	40	40	40	40	40	40	40	13								13	40	40	40	40	40	40	40
14	55	55	55	55	55	55	55	14								14	55	55	55	55	55	55	55
15	64	64	64	64	64	64	64	15								15	64	64	64	64	64	64	64
16	60	60	60	60	60	60	60	16								16	60	60	60	60	60	60	60
17	63	63	63	63	63	63	63	17								17	63	63	63	63	63	63	63
18	61	61	61	61	61	61	61	18								18	61	61	61	61	61	61	61
19	58	58	58	58	58	58	58	19								19	58	58	58	58	58	58	58
20	57	57	57	57	57	57	57	20								20	57	57	57	57	57	57	57
21	47	47	47	47	47	47	47	21								21	47	47	47	47	47	47	47
22	63	63	63	63	63	63	63	22								22	63	63	63	63	63	63	63
23	60	60	60	60	60	60	60	23								23	60	60	60	60	60	60	60

# Air Transport Movement Allocation by Operator

Comparison between W18 End vs. W19 Start



Operator	FULL SEASON ALLOCATION							PEAK WEEK ALLOCATION								
	W18 ATMs	W19 ATMs	+/- change	W19 Rank	W18 Seats	W19 Seats	+/- change	W19 Rank	W18 ATMs	W19 ATMs	+/- change	W19 Rank	W18 Seats	W19 Seats	+/- change	W19 Rank
Aeroflot	925	924	-1	20	220,540	188,496	-32,044	20	42	42	0	20	10,052	8,568	-1,484	20
AerLogic	389	528	139	39	-	-	0	76	15	24	9	39	-	-	0	76
Air Algerie	176	176	0	70	44,176	44,176	0	63	8	8	0	69	2,008	2,008	0	63
Air Astana	526	616	90	30	89,006	103,444	14,438	38	24	28	4	31	4,074	4,702	628	39
Air Canada	158	220	62	63	62,396	65,560	3,164	53	8	10	2	64	3,200	2,980	-220	54
Air China	440	440	0	41	123,992	123,992	0	33	20	20	0	41	5,636	5,636	0	34
Air France	361	516	155	40	115,468	137,616	22,148	30	14	24	10	39	4,112	6,384	2,272	29
Air India	2,024	3,076	1,052	7	403,684	650,792	247,108	7	92	140	48	7	18,336	29,628	11,292	7
Air India Express	3,517	3,558	41	6	650,645	658,230	7,585	6	160	162	2	6	29,600	29,970	370	6
Air Moldova	6	-	-6	80	774	-	-774	76	2	-	-2	80	208	-	-208	76
Air Peace	18	-	-18	80	4,932	-	-4,932	76	-	-	0	80	-	-	-	76
Airblue	776	964	188	19	154,074	203,280	49,206	18	36	44	8	18	6,960	9,280	2,320	18
Ariana Afghan Airlines	233	218	-15	67	33,089	30,956	-2,133	70	9	10	1	64	1,278	1,240	-38	69
ASL Airlines Belgium	252	-	-252	80	-	-	-	76	-	-	0	80	-	-	-	76
Azerbaijan Airlines	526	544	18	38	99,108	97,596	-1,512	39	36	42	6	20	6,792	7,476	684	23
Azur Air Russia	192	207	15	69	41,542	63,441	21,899	54	12	6	-6	75	2,580	1,774	-806	64
Azur Air Ukraine	-	-	0	80	-	-	-	76	-	-	0	80	-	-	-	76
Badr Airlines	131	218	87	67	17,250	27,904	10,654	71	6	10	4	64	768	1,280	512	71
Biman Bangladesh	308	308	0	47	49,896	83,468	33,572	43	14	14	0	46	2,268	3,794	1,526	43
British Airways	926	924	-2	20	234,608	261,262	26,654	15	42	42	0	20	10,860	11,516	656	16
British International	-	-	0	80	-	-	-	76	-	-	0	80	-	-	-	76
Cathay Pacific	920	924	4	20	291,640	292,908	1,268	12	42	42	0	20	13,314	13,314	0	12
Cebu Air Inc.	314	308	-6	47	136,904	134,288	-2,616	31	14	14	0	46	6,104	6,104	0	32
Cham Wings Airlines	84	-	-84	80	15,120	-	-15,120	76	-	-	0	80	-	-	-	76
China Eastern	322	572	250	35	95,740	156,332	60,592	25	14	26	12	36	4,172	7,106	2,934	26
China Southern	660	968	308	18	169,560	276,672	107,112	13	30	44	14	18	7,652	12,576	4,924	13
Daallo Airlines	59	88	29	78	7,466	11,088	3,622	75	2	4	2	78	252	504	252	75
DHL Aviation	751	792	41	27	-	-	0	76	34	36	2	28	-	-	-	76
Egypt Air	934	1,101	167	13	232,153	263,429	31,276	14	45	50	5	13	11,107	11,960	853	14
Emirates	76,230	79,101	2,871	1	31,951,039	33,245,135	1,294,096	1	3,519	3,635	116	1	1,481,333	1,525,969	44,636	1
Eritrean Airlines	-	-	0	80	-	-	-	76	-	-	0	80	-	-	-	76
Ethiopian Airlines	922	922	0	24	262,394	258,034	-4,360	16	42	42	0	20	11,352	11,760	408	15
Federal Express	1,054	1,364	310	12	-	-	0	76	48	62	14	12	-	-	-	76
Finnair	296	291	-5	62	72,533	71,233	-1,300	50	14	14	0	46	3,434	3,434	0	49
Fly Baghdad	18	-	-18	80	2,466	-	-2,466	76	-	-	0	80	-	-	-	76
Flyadeal	-	390	390	43	-	72,540	72,540	49	-	20	20	41	-	3,720	3,720	45
Flydubai	33,884	41,770	7,886	2	6,060,745	7,274,412	1,213,667	2	1,630	1,920	290	2	291,479	334,362	42,883	2
Flynas	2,006	2,236	230	10	328,984	366,704	37,720	9	102	102	0	9	16,728	16,728	0	9
Georgian Airways	-	-	0	80	-	-	-	76	-	-	0	80	-	-	-	76
GoAir	-	307	307	58	-	55,260	55,260	58	-	14	14	46	-	2,520	2,520	57
Gulf Air	2,160	2,244	84	9	314,024	315,348	1,324	10	102	102	0	9	14,334	14,334	0	10
Hainan Airlines	-	-	0	80	-	-	-	76	-	-	0	80	-	-	-	76
Himalaya Airlines	134	308	174	47	21,172	48,664	27,492	61	10	14	4	46	1,580	2,212	632	60
Indigo	4,005	5,542	1,537	3	720,900	997,560	276,660	4	182	252	70	3	32,760	45,360	12,600	4
Iran Air	364	352	-12	44	59,148	68,288	9,140	51	16	16	0	45	3,010	3,104	94	51
Iraqi Airways	710	1,052	342	16	111,000	163,060	52,060	23	34	48	14	15	5,770	7,440	1,670	24
Jazeera Airways	986	1,012	26	17	156,798	160,908	4,110	24	46	46	0	17	7,314	7,314	0	25
Jet Airways	2,920	-	-2,920	80	496,072	-	-496,072	76	154	-	-154	80	25,872	-	-25,872	76
Jubba Airways	87	-	-87	80	16,482	-	-16,482	76	6	-	-6	80	1,132	-	-1,132	76
Kam Air	-	-	0	80	-	-	-	76	-	-	0	80	-	-	-	76
Karun Airlines	34	-	-34	80	3,526	-	-3,526	76	-	-	0	80	-	-	-	76
Kenya Airways	614	616	2	30	113,327	116,732	3,405	34	28	28	0	31	5,306	5,306	0	35
Kish Air	522	572	50	35	77,778	85,228	7,450	40	22	26	4	36	3,278	3,874	596	40
KLM Royal Dutch Airlines	342	308	-34	47	108,824	125,664	16,840	32	14	14	0	46	4,480	5,712	1,232	33
Korean Air	308	308	0	47	70,278	76,384	6,106	47	14	14	0	46	3,052	3,472	420	48
Kuwait Airways	1,096	1,100	4	14	189,530	179,140	-10,390	21	50	50	0	13	8,488	8,172	-316	21
Lufthansa	306	304	-2	60	113,442	77,520	-35,922	46	14	12	-2	62	5,194	3,060	-2,134	52
Mahan Air	698	792	94	27	165,678	193,600	27,922	19	28	36	8	28	6,906	8,800	1,894	19
Med-View Airline	-	-	0	80	-	-	-	76	-	-	0	80	-	-	-	76
Middle East Airlines	932	922	-10	24	159,440	140,716	-18,724	28	42	42	0	20	8,124	6,236	-1,888	31
Nepal Airlines	307	307	0	58	53,726	84,118	30,392	41	14	14	0	46	2,212	3,836	1,624	41
Nile Air	-	-	0	80	-	-	-	76	-	-	0	80	-	-	-	76
Norwegian	754	614	-140	34	147,168	114,204	-32,964	35	42	28	-14	31	7,932	5,208	-2,724	36
Oman Air	2,414	2,462	48	8	412,386	431,184	18,798	8	112	112	0	8	18,860	19,614	754	8
Pegasus Airlines	382	309	-73	46	72,198	73,851	1,653	48	25	14	-11	46	4,725	3,346	-1,379	50
Philippine Airlines	306	308	2	47	111,042	111,804	762	36	16	14	-2	46	5,772	5,082	-690	37
PIA Pakistan International	1,394	1,448	54	11	242,364	238,608	-3,756	17	64	66	2	11	11,522	10,876	-646	17
Pobeda Airlines LLC	-	176	176	70	-	33,264	33,264	66	-	8	8	69	-	1,512	1,512	66
Qatar Airways	36	-	-36	80	13,224	-	-13,224	76	-	-	0	80	-	-	-	76
Qeshm Air	319	308	-11	47	31,900	34,496	2,596	65	-	-14	-1	46	1,500	1,568	68	65
Rada Airlines	-	-	0	80	-	-	-	76	-	-	0	80	-	-	-	76
Rossia Airlines	196	172	-24	75	37,044	32,508	-4,536	69	6	6	0	75	1,134	1,134	0	72
Royal Brunei Airlines	173	176	3	70	43,942	44,704	762	62	8	8	0	69	2,032	2,032	0	62
Royal Jordanian	822	894	72	26	119,121	168,467	49,346	22	38	42	4	20	5,818	7,882	2,064	22
Rwandair	307	436	129	42	63,018	107,704	44,686	37	14	20	6	41	2,936	4,940	2,004	38
S7 Airlines	132	168	36	76	21,570	27,552	5,982	72	6	8	2	69	984	1,312	328	70
Salam Air	612	792	180	27	106,488	137,808	31,320	29	28	36	8	28	4,872	6,264	1,392	30
Saudia	4,319	4,618	299	4	1,029,299	1,077,712	48,413	3	202	210	8	4	49,316	49,000	-316	3
SaudiGulf Airlines	614	616	2	30	83,504	83,776	272	42	28	28	0	31	3,808	3,808	0	42
Shaheen Air	618	-	-618	80	102,024	-	-102,024	76	62	-	-62	80	10,236	-	-10,236	76
Sichuan Airlines	212	220	8	63	63,190	66,220	3,030	52	10	10	0	64	3,010	3,010	0	53
Singapore Airlines	308	308	0	47	81,312	-	-	44	14	14	0	46	3,696	3,696	0	46
Skyp Airlines	-	176	176	70	-	33,264	33,264	66	-	8	8	69	-	1,512	1,512	66
Smartavia	-	-	0	80	-	-	-	76	-	-	0	80	-	-	-	76
Somon Air	88	-	-88	80	16,192	16,192	-	74	4	4	0	78	736	736	0	74
Solcejet	2,992	4,483	1,491	5	565,488	847,287	281,799	5	136	206	70	5	25,704	38,934	13,230	5
SriLankan Airlines	468	572	104	35	114,198	153,868	39,670	26	22	26	4	36	5,230	6,994	1,764	27
Swiss International	610	616	6	30	143,960	145,376	1,4									

# Peak Week - Allocation and Slot Adjustment Distribution by Operator



Schedule: W19 Start

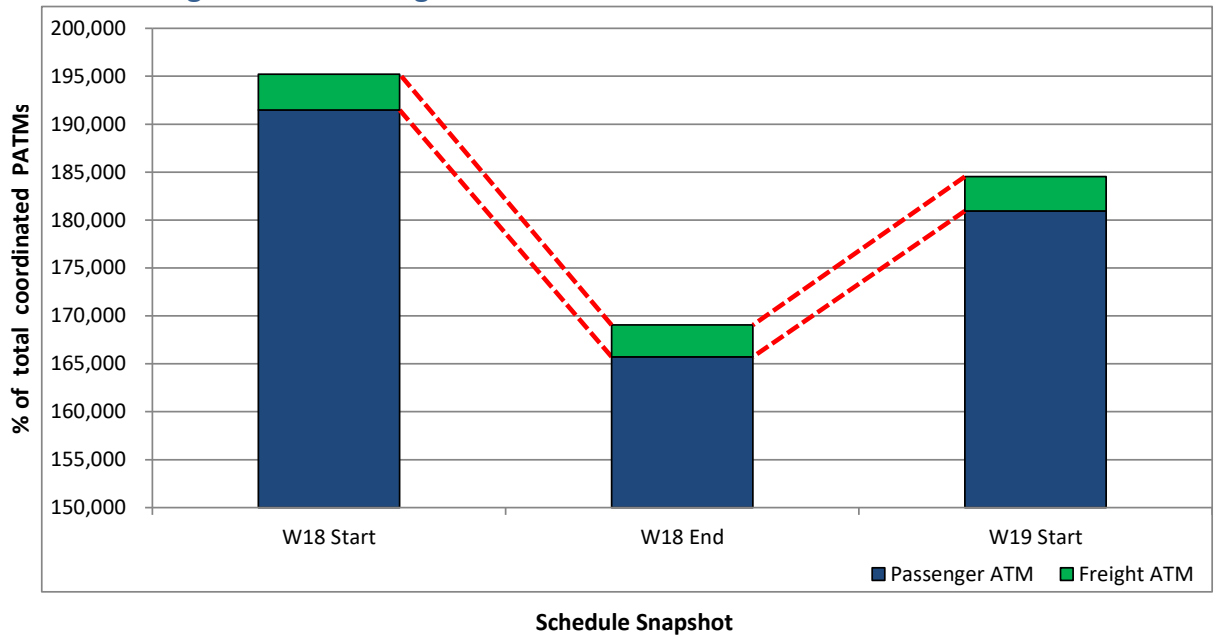
Operator	W19 allocated ATMs	SLOT ADJUSTMENTS (MINUTES OFF REQUESTED TIME)														Requests with NO slot allocated	
		0	5	10	15	20	25	30	35	40	45	50	55	60	>60		
Aeroflot	42	100.0%	0.0%	0.0%	0.0%	0.0%	0.0%	0.0%	0.0%	0.0%	0.0%	0.0%	0.0%	0.0%	0.0%	0.0%	-
AeroLogic	24	100.0%	0.0%	0.0%	0.0%	0.0%	0.0%	0.0%	0.0%	0.0%	0.0%	0.0%	0.0%	0.0%	0.0%	0.0%	-
Air Algerie	8	50.0%	0.0%	50.0%	0.0%	0.0%	0.0%	0.0%	0.0%	0.0%	0.0%	0.0%	0.0%	0.0%	0.0%	0.0%	-
Air Astana	28	85.7%	0.0%	0.0%	0.0%	0.0%	0.0%	0.0%	0.0%	0.0%	0.0%	0.0%	0.0%	0.0%	14.3%	0.0%	-
Air Canada	10	100.0%	0.0%	0.0%	0.0%	0.0%	0.0%	0.0%	0.0%	0.0%	0.0%	0.0%	0.0%	0.0%	0.0%	0.0%	-
Air China	20	100.0%	0.0%	0.0%	0.0%	0.0%	0.0%	0.0%	0.0%	0.0%	0.0%	0.0%	0.0%	0.0%	0.0%	0.0%	-
Air France	24	100.0%	0.0%	0.0%	0.0%	0.0%	0.0%	0.0%	0.0%	0.0%	0.0%	0.0%	0.0%	0.0%	0.0%	0.0%	-
Air India	140	100.0%	0.0%	0.0%	0.0%	0.0%	0.0%	0.0%	0.0%	0.0%	0.0%	0.0%	0.0%	0.0%	0.0%	0.0%	-
Air India Express	162	95.7%	0.0%	0.0%	0.0%	4.3%	0.0%	0.0%	0.0%	0.0%	0.0%	0.0%	0.0%	0.0%	0.0%	0.0%	24
Air Moldova	-	-	-	-	-	-	-	-	-	-	-	-	-	-	-	-	-
Air Peace	-	-	-	-	-	-	-	-	-	-	-	-	-	-	-	-	4
Airblue	44	100.0%	0.0%	0.0%	0.0%	0.0%	0.0%	0.0%	0.0%	0.0%	0.0%	0.0%	0.0%	0.0%	0.0%	0.0%	-
Ariana Afghan Airlines	10	0.0%	0.0%	0.0%	0.0%	0.0%	0.0%	0.0%	0.0%	0.0%	0.0%	0.0%	0.0%	0.0%	50.0%	0.0%	-
ASL Airlines Belgium	-	-	-	-	-	-	-	-	-	-	-	-	-	-	-	-	-
Azerbaijan Airlines	42	100.0%	0.0%	0.0%	0.0%	0.0%	0.0%	0.0%	0.0%	0.0%	0.0%	0.0%	0.0%	0.0%	0.0%	0.0%	-
Azur Air Russia	6	66.7%	0.0%	0.0%	0.0%	0.0%	0.0%	0.0%	0.0%	0.0%	0.0%	0.0%	0.0%	0.0%	33.3%	0.0%	4
Azur Air Ukraine	-	-	-	-	-	-	-	-	-	-	-	-	-	-	-	-	4
Badr Airlines	10	100.0%	0.0%	0.0%	0.0%	0.0%	0.0%	0.0%	0.0%	0.0%	0.0%	0.0%	0.0%	0.0%	0.0%	0.0%	-
Biman Bangladesh	14	100.0%	0.0%	0.0%	0.0%	0.0%	0.0%	0.0%	0.0%	0.0%	0.0%	0.0%	0.0%	0.0%	0.0%	0.0%	-
British Airways	42	100.0%	0.0%	0.0%	0.0%	0.0%	0.0%	0.0%	0.0%	0.0%	0.0%	0.0%	0.0%	0.0%	0.0%	0.0%	-
British International	-	-	-	-	-	-	-	-	-	-	-	-	-	-	-	-	8
Cathay Pacific	42	100.0%	0.0%	0.0%	0.0%	0.0%	0.0%	0.0%	0.0%	0.0%	0.0%	0.0%	0.0%	0.0%	0.0%	0.0%	-
Cebu Air Inc.	14	100.0%	0.0%	0.0%	0.0%	0.0%	0.0%	0.0%	0.0%	0.0%	0.0%	0.0%	0.0%	0.0%	0.0%	0.0%	-
Cham Wings Airlines	-	-	-	-	-	-	-	-	-	-	-	-	-	-	-	-	-
China Eastern	26	96.2%	0.0%	3.8%	0.0%	0.0%	0.0%	0.0%	0.0%	0.0%	0.0%	0.0%	0.0%	0.0%	0.0%	0.0%	-
China Southern	44	86.4%	0.0%	0.0%	0.0%	0.0%	0.0%	13.6%	0.0%	0.0%	0.0%	0.0%	0.0%	0.0%	0.0%	0.0%	-
Daallo Airlines	4	100.0%	0.0%	0.0%	0.0%	0.0%	0.0%	0.0%	0.0%	0.0%	0.0%	0.0%	0.0%	0.0%	0.0%	0.0%	-
DHL Aviation	36	100.0%	0.0%	0.0%	0.0%	0.0%	0.0%	0.0%	0.0%	0.0%	0.0%	0.0%	0.0%	0.0%	0.0%	0.0%	-
Egypt Air	50	96.0%	4.0%	0.0%	0.0%	0.0%	0.0%	0.0%	0.0%	0.0%	0.0%	0.0%	0.0%	0.0%	0.0%	0.0%	-
Emirates	3,635	98.6%	0.2%	0.1%	0.1%	0.4%	0.0%	0.3%	0.0%	0.0%	0.0%	0.0%	0.0%	0.0%	0.0%	0.3%	-
Eritrean Airlines	-	-	-	-	-	-	-	-	-	-	-	-	-	-	-	-	6
Ethiopian Airlines	42	100.0%	0.0%	0.0%	0.0%	0.0%	0.0%	0.0%	0.0%	0.0%	0.0%	0.0%	0.0%	0.0%	0.0%	0.0%	-
Federal Express	62	85.5%	6.5%	0.0%	0.0%	0.0%	3.2%	3.2%	1.6%	0.0%	0.0%	0.0%	0.0%	0.0%	0.0%	0.0%	-
Finnair	14	100.0%	0.0%	0.0%	0.0%	0.0%	0.0%	0.0%	0.0%	0.0%	0.0%	0.0%	0.0%	0.0%	0.0%	0.0%	-
Fly Baghdad	-	-	-	-	-	-	-	-	-	-	-	-	-	-	-	-	-
Flyadeal	20	95.0%	0.0%	0.0%	0.0%	0.0%	0.0%	0.0%	0.0%	0.0%	0.0%	0.0%	0.0%	5.0%	0.0%	0.0%	50
Flydubai	1,920	93.1%	1.3%	1.3%	1.0%	0.7%	0.2%	0.9%	0.0%	0.4%	0.2%	0.1%	0.1%	0.2%	0.5%	0.0%	-
Flynas	102	86.3%	0.0%	0.0%	0.0%	0.0%	0.0%	0.0%	0.0%	0.0%	0.0%	0.0%	0.0%	0.0%	13.7%	0.0%	12
Georgian Airways	-	-	-	-	-	-	-	-	-	-	-	-	-	-	-	-	6
GoAir	14	92.9%	7.1%	0.0%	0.0%	0.0%	0.0%	0.0%	0.0%	0.0%	0.0%	0.0%	0.0%	0.0%	0.0%	0.0%	94
Gulf Air	102	58.8%	0.0%	27.5%	13.7%	0.0%	0.0%	0.0%	0.0%	0.0%	0.0%	0.0%	0.0%	0.0%	0.0%	0.0%	-
Hainan Airlines	-	-	-	-	-	-	-	-	-	-	-	-	-	-	-	-	-
Himalaya Airlines	-	100.0%	0.0%	0.0%	0.0%	0.0%	0.0%	0.0%	0.0%	0.0%	0.0%	0.0%	0.0%	0.0%	0.0%	0.0%	-
Indigo	252	86.1%	2.8%	2.8%	2.8%	0.0%	5.6%	0.0%	0.0%	0.0%	0.0%	0.0%	0.0%	0.0%	0.0%	0.0%	-
Iran Air	16	68.8%	6.3%	12.5%	0.0%	0.0%	0.0%	0.0%	12.5%	0.0%	0.0%	0.0%	0.0%	0.0%	0.0%	0.0%	-
Iraqi Airways	48	100.0%	0.0%	0.0%	0.0%	0.0%	0.0%	0.0%	0.0%	0.0%	0.0%	0.0%	0.0%	0.0%	0.0%	0.0%	6
Jazeera Airways	46	100.0%	0.0%	0.0%	0.0%	0.0%	0.0%	0.0%	0.0%	0.0%	0.0%	0.0%	0.0%	0.0%	0.0%	0.0%	-
Jet Airways	-	-	-	-	-	-	-	-	-	-	-	-	-	-	-	-	-
Jubba Airways	-	-	-	-	-	-	-	-	-	-	-	-	-	-	-	-	-
Kam Air	-	-	-	-	-	-	-	-	-	-	-	-	-	-	-	-	14
Karun Airlines	-	-	-	-	-	-	-	-	-	-	-	-	-	-	-	-	-
Kenya Airways	28	100.0%	0.0%	0.0%	0.0%	0.0%	0.0%	0.0%	0.0%	0.0%	0.0%	0.0%	0.0%	0.0%	0.0%	0.0%	-
Kish Air	26	100.0%	0.0%	0.0%	0.0%	0.0%	0.0%	0.0%	0.0%	0.0%	0.0%	0.0%	0.0%	0.0%	0.0%	0.0%	4
KLM Royal Dutch Airlines	14	100.0%	0.0%	0.0%	0.0%	0.0%	0.0%	0.0%	0.0%	0.0%	0.0%	0.0%	0.0%	0.0%	0.0%	0.0%	-
Korean Air	14	100.0%	0.0%	0.0%	0.0%	0.0%	0.0%	0.0%	0.0%	0.0%	0.0%	0.0%	0.0%	0.0%	0.0%	0.0%	-
Kuwait Airways	50	86.0%	14.0%	0.0%	0.0%	0.0%	0.0%	0.0%	0.0%	0.0%	0.0%	0.0%	0.0%	0.0%	0.0%	0.0%	-
Lufthansa	12	100.0%	0.0%	0.0%	0.0%	0.0%	0.0%	0.0%	0.0%	0.0%	0.0%	0.0%	0.0%	0.0%	0.0%	0.0%	-
Mahan Air	36	86.1%	0.0%	2.8%	0.0%	0.0%	0.0%	0.0%	0.0%	0.0%	2.8%	0.0%	0.0%	0.0%	8.3%	0.0%	6
Med-View Airline	-	-	-	-	-	-	-	-	-	-	-	-	-	-	-	-	-
Middle East Airlines	42	100.0%	0.0%	0.0%	0.0%	0.0%	0.0%	0.0%	0.0%	0.0%	0.0%	0.0%	0.0%	0.0%	0.0%	0.0%	-
Nepal Airlines	14	78.6%	0.0%	0.0%	0.0%	0.0%	0.0%	0.0%	0.0%	0.0%	0.0%	0.0%	0.0%	0.0%	0.0%	0.0%	-
Nile Air	-	-	-	-	-	-	-	-	-	-	-	-	-	-	-	-	14
Norwegian	28	100.0%	0.0%	0.0%	0.0%	0.0%	0.0%	0.0%	0.0%	0.0%	0.0%	0.0%	0.0%	0.0%	0.0%	0.0%	-
Oman Air	112	100.0%	0.0%	0.0%	0.0%	0.0%	0.0%	0.0%	0.0%	0.0%	0.0%	0.0%	0.0%	0.0%	0.0%	0.0%	8
Pegasus Airlines	14	100.0%	0.0%	0.0%	0.0%	0.0%	0.0%	0.0%	0.0%	0.0%	0.0%	0.0%	0.0%	0.0%	0.0%	0.0%	-
Philippine Airlines	14	100.0%	0.0%	0.0%	0.0%	0.0%	0.0%	0.0%	0.0%	0.0%	0.0%	0.0%	0.0%	0.0%	0.0%	0.0%	-
PIA Pakistan International	66	100.0%	0.0%	0.0%	0.0%	0.0%	0.0%	0.0%	0.0%	0.0%	0.0%	0.0%	0.0%	0.0%	0.0%	0.0%	36
Pobeda Airlines LLC	8	100.0%	0.0%	0.0%	0.0%	0.0%	0.0%	0.0%	0.0%	0.0%	0.0%	0.0%	0.0%	0.0%	0.0%	0.0%	-
Qatar Airways	-	-	-	-	-	-	-	-	-	-	-	-	-	-	-	-	-
Qeshm Air	14	92.9%	0.0%	0.0%	0.0%	0.0%	0.0%	0.0%	0.0%	7.1%	0.0%	0.0%	0.0%	0.0%	0.0%	0.0%	-
Rossiya Airlines	6	100.0%	0.0%	0.0%	0.0%	0.0%	0.0%	0.0%	0.0%	0.0%	0.0%	0.0%	0.0%	0.0%	0.0%	0.0%	-
Royal Brunei Airlines	8	100.0%	0.0%	0.0%	0.0%	0.0%	0.0%	0.0%	0.0%	0.0%	0.0%	0.0%	0.0%	0.0%	0.0%	0.0%	-
Royal Jordanian	42	95.2%	0.0%	4.8%	0.0%	0.0%	0.0%	0.0%	0.0%	0.0%	0.0%	0.0%	0.0%	0.0%	0.0%	0.0%	-
Rwandair	20	85.0%	0.0%	0.0%	0.0%	15.0%	0.0%	0.0%	0.0%	0.0%	0.0%	0.0%	0.0%	0.0%	0.0%	0.0%	-
S7 Airlines	8	100.0%	0.0%	0.0%	0.0%	0.0%	0.0%	0.0%	0.0%	0.0%	0.0%	0.0%	0.0%	0.0%	0.0%	0.0%	-
Salam Air	36	100.0%	0.0%	0.0%	0.0%	0.0%	0.0%	0.0%	0.0%	0.0%	0.0%	0.0%	0.0%	0.0%	0.0%	0.0%	-
Saudia	210	99.0%	0.0%	0.0%	0.0%	0.0%	0.0%	1.0%	0.0%	0.0%	0.0%	0.0%	0.0%	0.0%	0.0%	0.0%	-
SaudiGulf Airlines	28	100.0%	0.0%	0.0%	0.0%	0.0%	0.0%	0.0%	0.0%	0.0%	0.0%	0.0%	0.0%	0.0%	0.0%	0.0%	-
Shaheen Air	-	-	-	-	-	-	-	-	-	-	-	-	-	-	-	-	-
Sichuan Airlines	10	100.0%	0.0%	0.0%	0.0%	0.0%	0.0%	0.0%	0.0%	0.0%	0.0%	0.0%	0.0%	0.0%	0.0%	0.0%	-
Singapore Airlines	14	100.0%	0.0%	0.0%	0.0%	0.0%	0.0%	0.0%	0.0%	0.0%	0.0%	0.0%	0.0%	0.0%	0.0%	0.0%	-
SkyUp Airlines	8	25.0%	0.0%	0.0%	12.5%	0.0%	0.0%	0.0%	0.0%	0.0%	12.5%	0.0%	0.0%	0.0%	50.0%	0.0%	6
Smartavia	-	-	-	-	-	-	-	-	-	-	-	-	-	-	-	-	4
Somon Air	4	100.0%	0.0%	0.0%	0.0%	0.0%	0.0%	0.0%	0.0%	0.0%	0.0%	0.0%	0.0%	0.0%	0.0%	0.0%	-
SpiceJet	206	85.9%	0.0%	0.0%	0.0%	3.4%	0.0%	0.0%	2.9%	0.0%	0.0%	0.0%	0.0%	0.0%	7.8%	0.0%	-
SriLankan Airlines	26	100.0%	0.0%	0.0%	0.0%	0.0%	0.0%	0.0%	0.0%	0.0%	0.0%	0.0%	0.0%	0.0%	0.0%	0.0%	-
Swiss International	28	100.0%	0.0%	0.0%	0.0%	0.0%	0.0%	0.0%	0.0%	0.0%	0.0%	0.0%	0.0%	0.0%	0.0%	0.0%	-
Svrian Air	8	100.0%	0.0%	0.0%	0.0%	0.0%	0.0%	0.0%	0.0%	0.0%	0.0%	0.0%	0.0%	0.0%	0.0%	0.0%	-
Thai Airways	14	100.0%															

## Significant Route Changes



Operator	Category	Description of change from W18 schedule to W19 schedule
Air India	<b>NEW</b>	Services to CCU, IDR
Air Peace	<b>CANCELLED</b>	Services to LOS
ASL Airlines Belgium	<b>CANCELLED</b>	Services to HKG, LGG
Cham Wings Airlines	<b>CANCELLED</b>	Services to DAM
China Eastern	<b>NEW</b>	Services to TAO, XIY
Emirates	<b>NEW</b>	Services to MEX, OPO, RGN
Emirates	<b>CANCELLED</b>	Services to ZAG
Eritrean Airlines	<b>CANCELLED</b>	Services to ASM
Federal Express	<b>NEW</b>	Services to CGN, JNB, LGG
Flyadeal	<b>NEW</b>	Services to RUH
Flydubai	<b>NEW</b>	Services to AER, BUD, JRO, NAP, RGN
Flydubai	<b>CANCELLED</b>	Services to CIT, FIH, ISB, TRV, UFA
GoAir	<b>NEW</b>	Services to CNN
Indigo	<b>CANCELLED</b>	Services to ATQ
Jet Airways	<b>CANCELLED</b>	Services to BOM, DEL, IXE, UDR
Jubba Airways	<b>CANCELLED</b>	Services to MGQ
Karun Airlines	<b>CANCELLED</b>	Services to AWZ
Kish Air	<b>NEW</b>	Services to GSM
Pobeda Airlines LLC	<b>NEW</b>	Services to VKO
Qatar Airways	<b>CANCELLED</b>	Services to DOH
Qeshm Air	CHANGE	Services to AWZ, LRR
Shaheen Air	<b>CANCELLED</b>	Services to ISB, KHI, LHE, MUX, PEW
Skyup Airlines	<b>NEW</b>	Services to LWO, OZH
UPS Airlines	<b>CANCELLED</b>	Services to BKK
Virgin Atlantic	<b>CANCELLED</b>	Services to LHR
Vistara	<b>CANCELLED</b>	Services to BOM

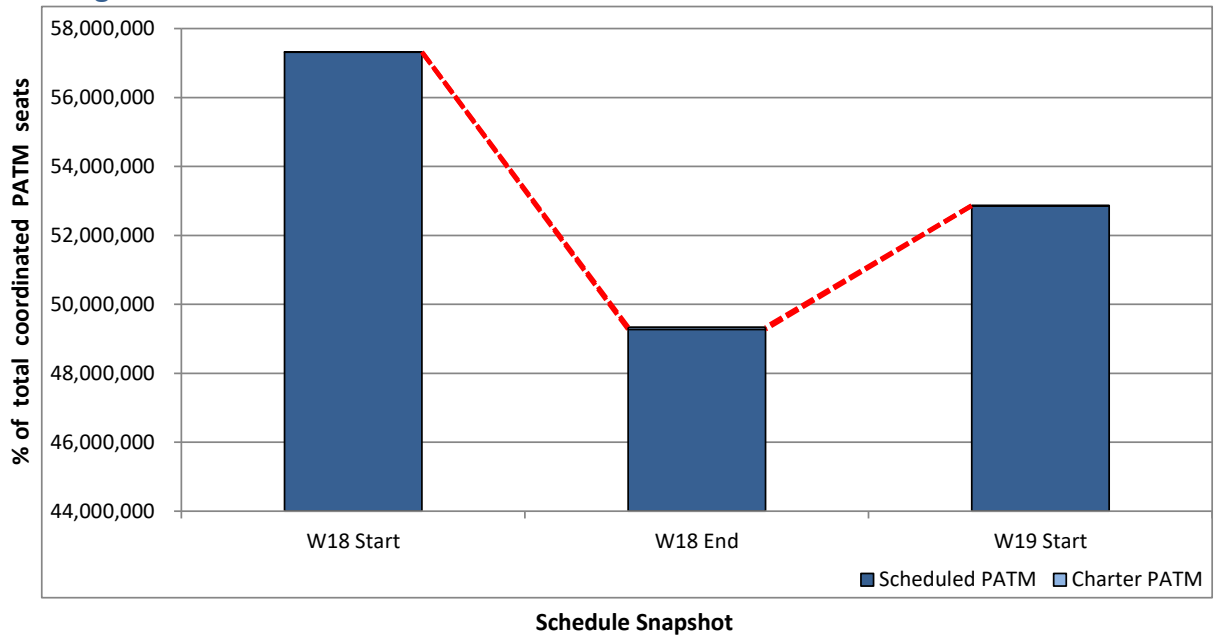
## Total ATMs: Passenger ATMs vs. Freight ATMs



# Full Season - PATM Seats Analysis



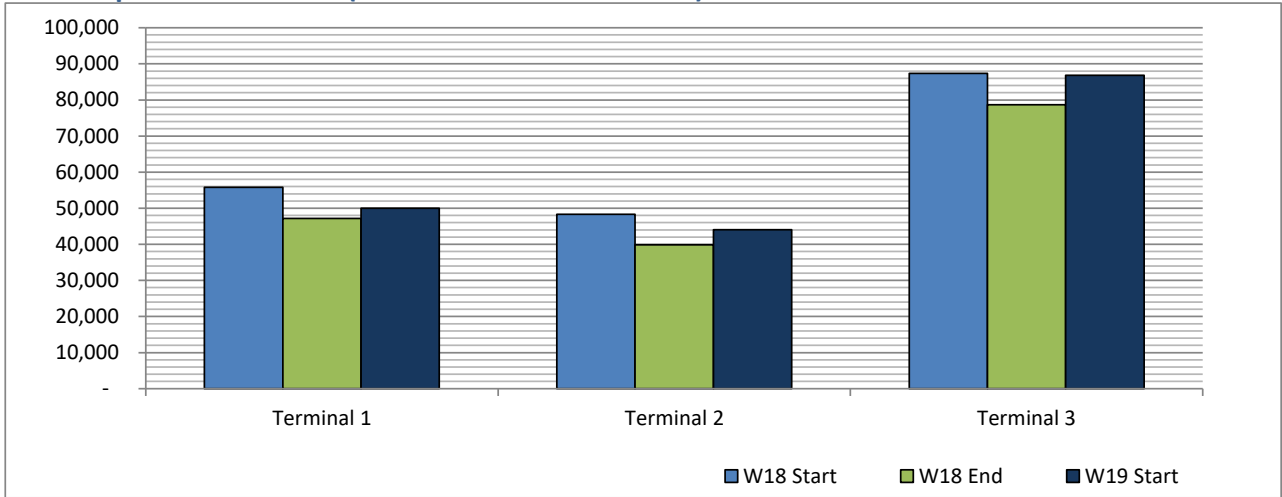
## Total Passenger ATM seats: Scheduled vs. Charter



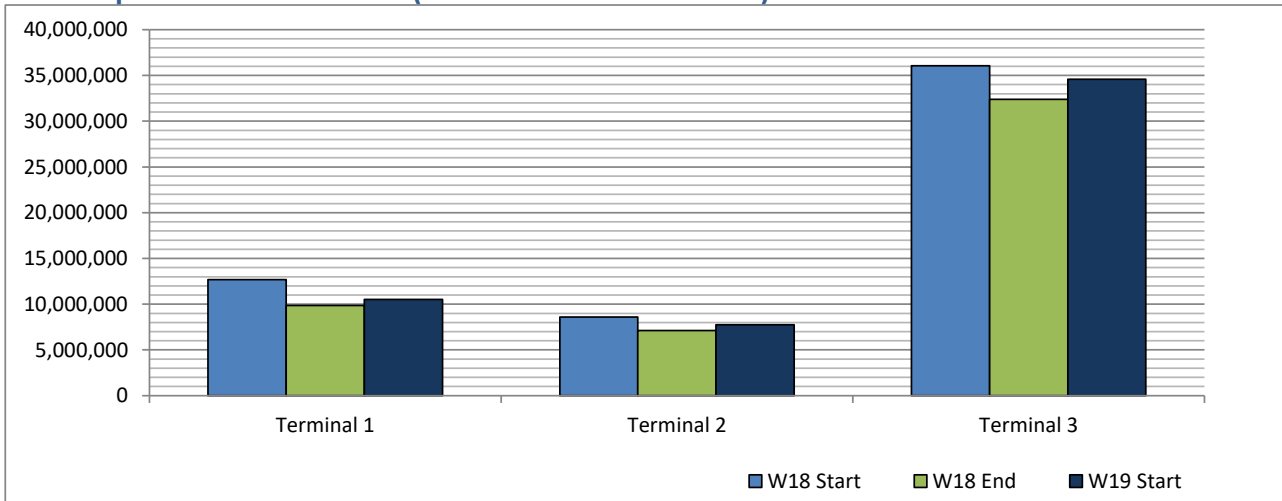
# Full Season - Terminal Analysis



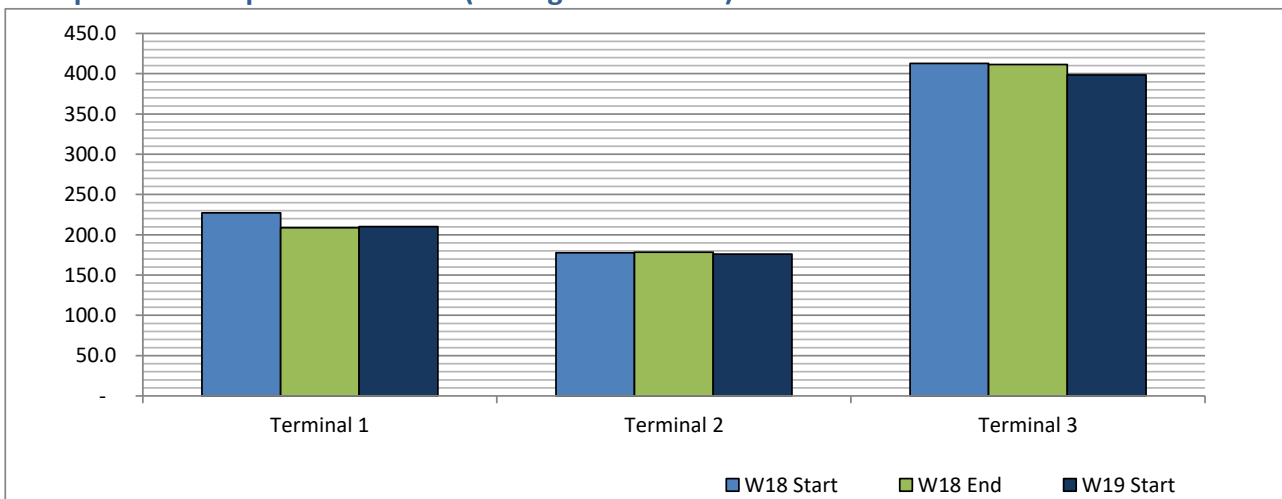
**Air Transport Movements (total allocated for season)**



**Air Transport Movement Seats (total allocated for season)**



**Seats per Air Transport Movement (average for season)**

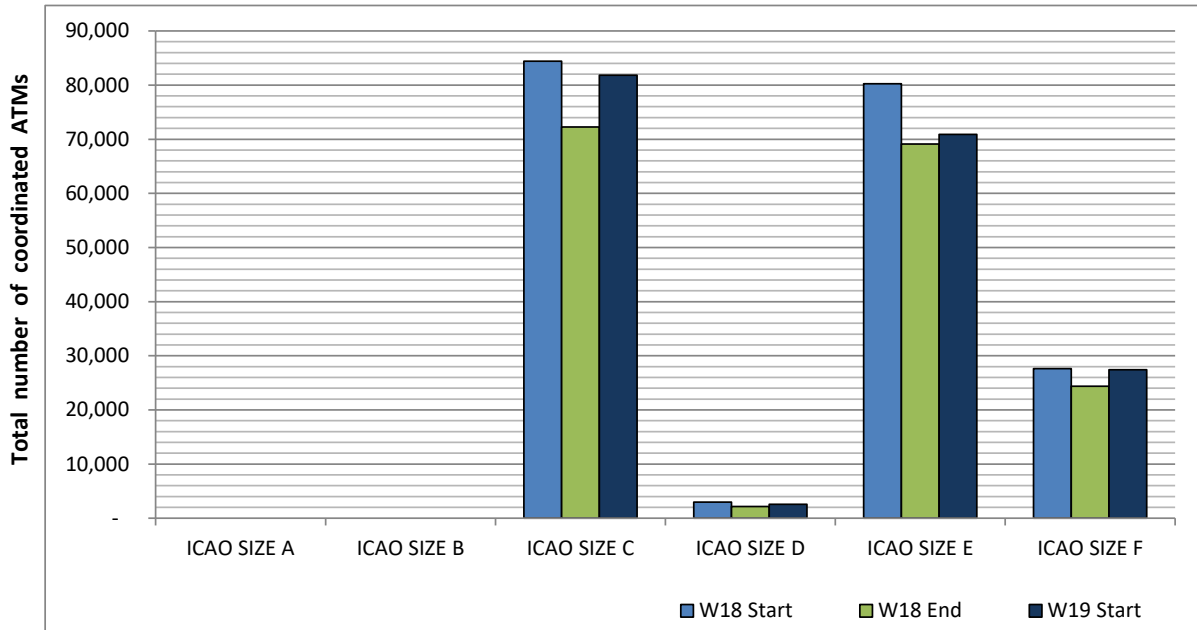




# Full Season - Aircraft Size Analysis

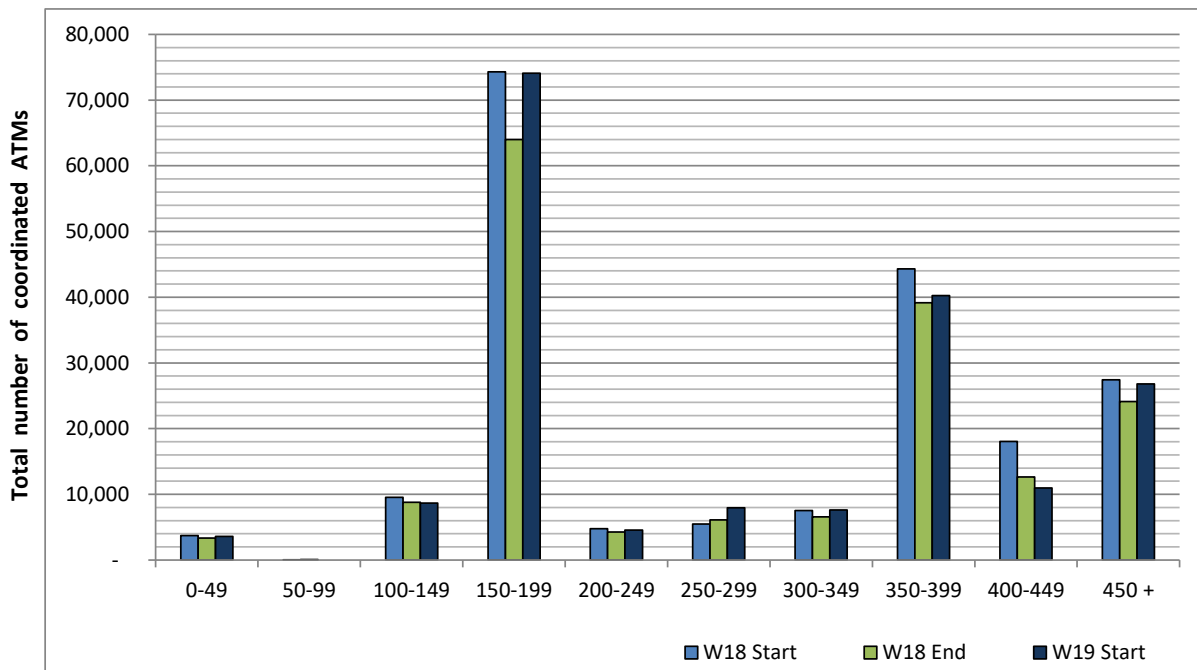


## ICAO size designation



Note: See Glossary for definitions of ICAO SIZE groupings

## Air Transport Movement seat distribution

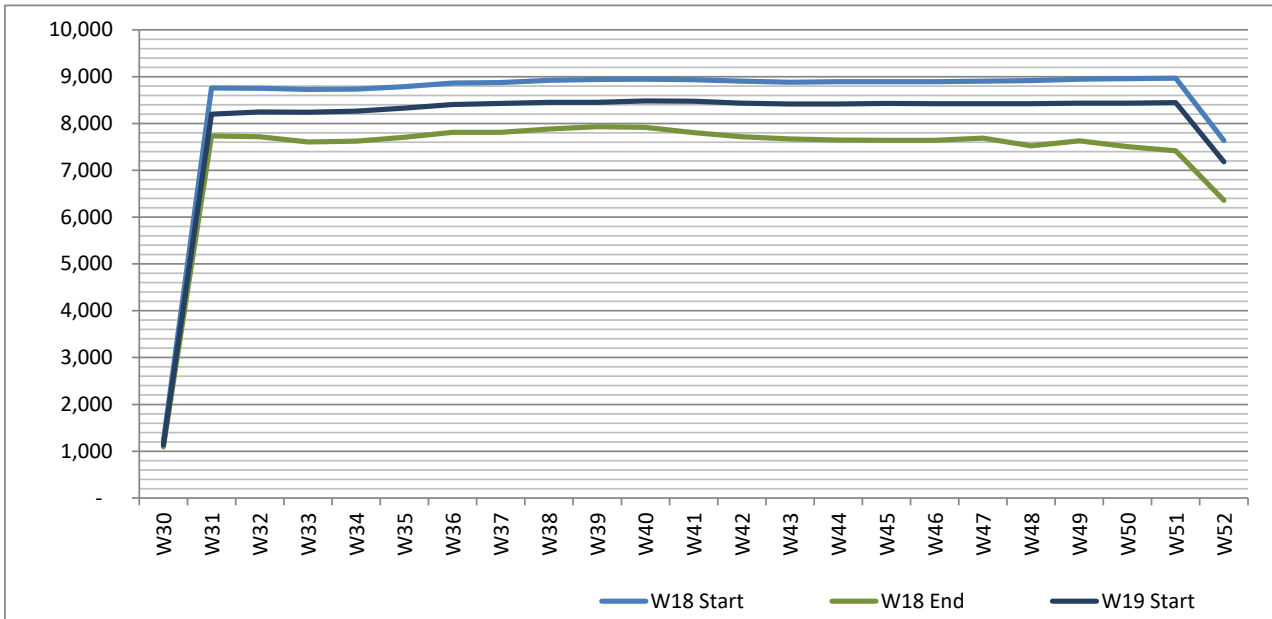


Note: FREIGHT-ONLY services with 0 seats are included in the first seat band '0-49'

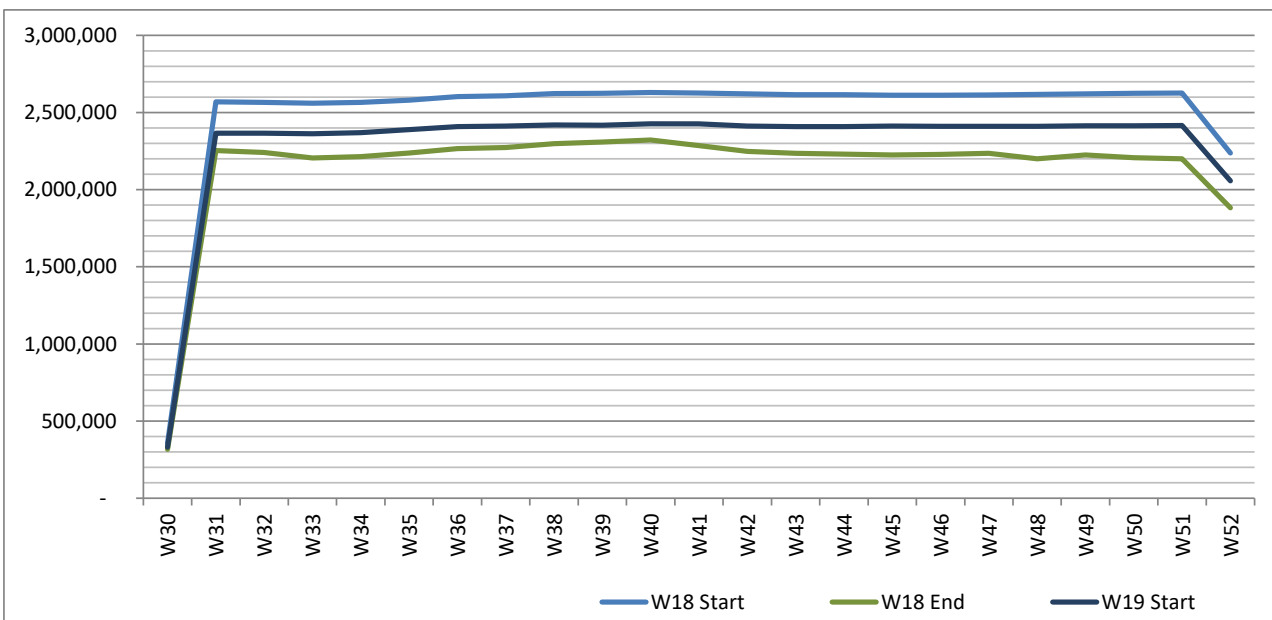
# Full Season - Seasonality



**Air Transport Movements by week of season**



**Air Transport Movement Seats by week of season**



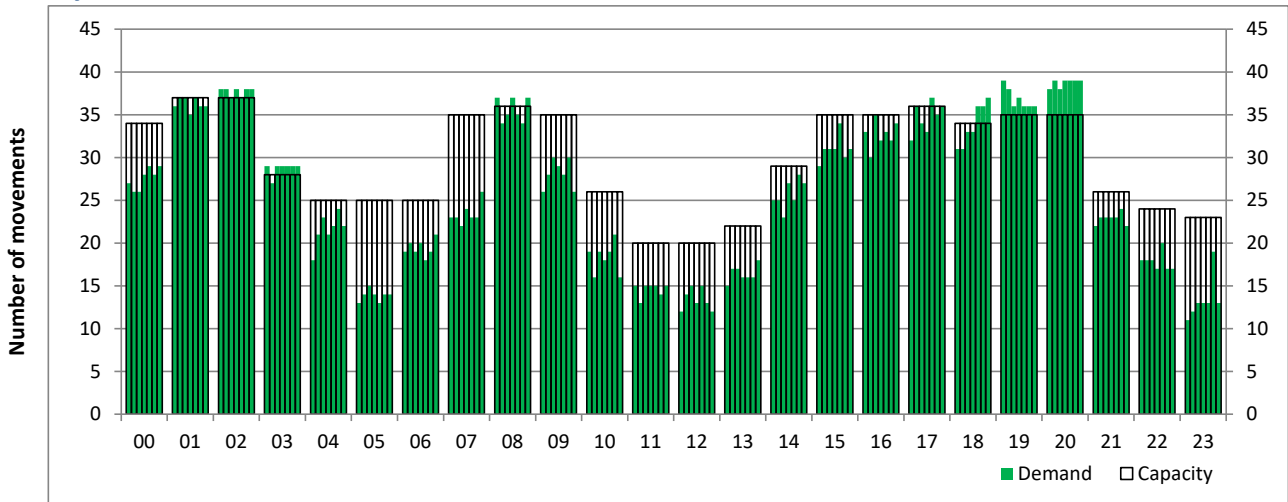
# Peak Week - Hourly Runway Demand

Schedule: W19 Start



## Hourly Arrival Demand

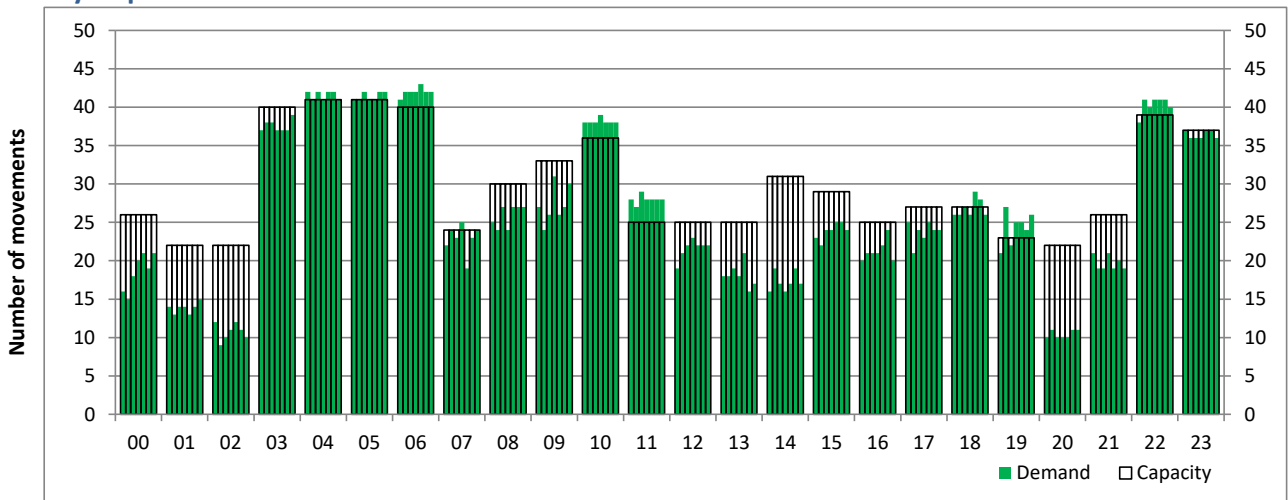
Time: UTC



Hour of day (24 hour format)

## Hourly Departure Demand

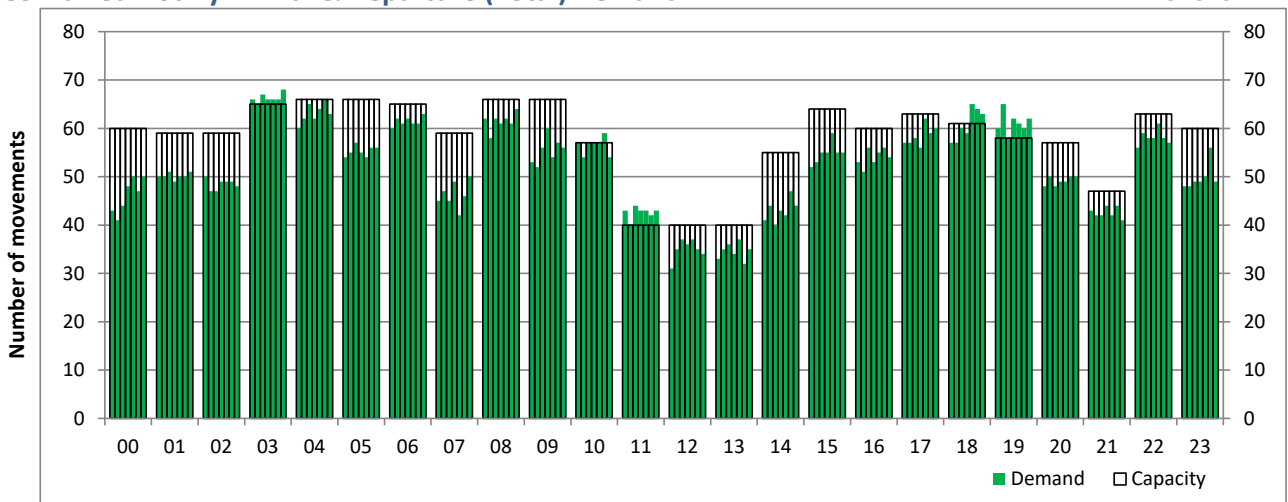
Time: UTC



Hour of day (24 hour format)

## Combined Hourly Arrival & Departure (Total) Demand

Time: UTC



Hour of day (24 hour format)

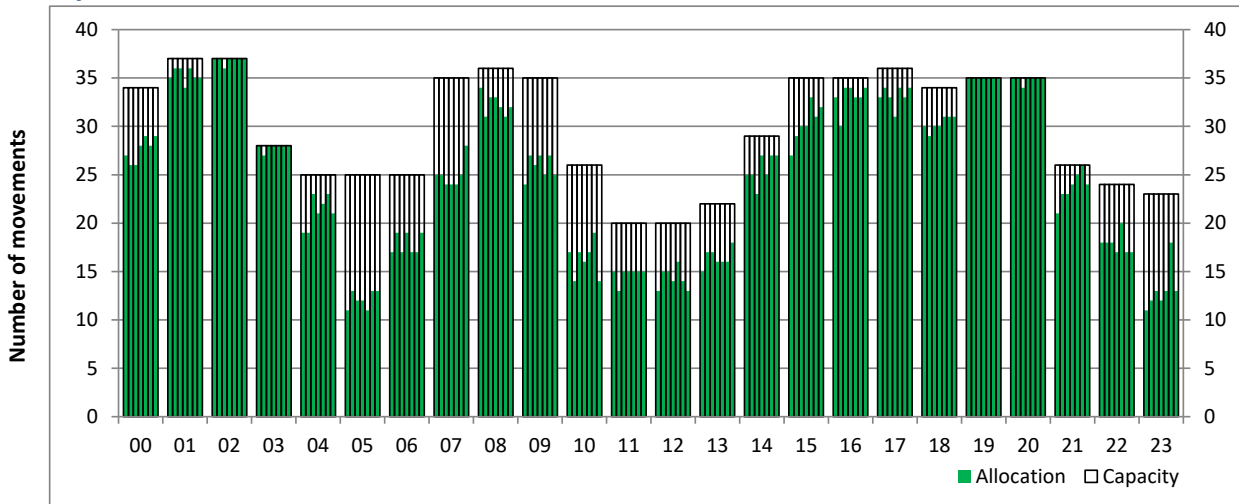
# Peak Week - Hourly Runway Allocation

Schedule: W19 Start



## Hourly Arrival Allocation

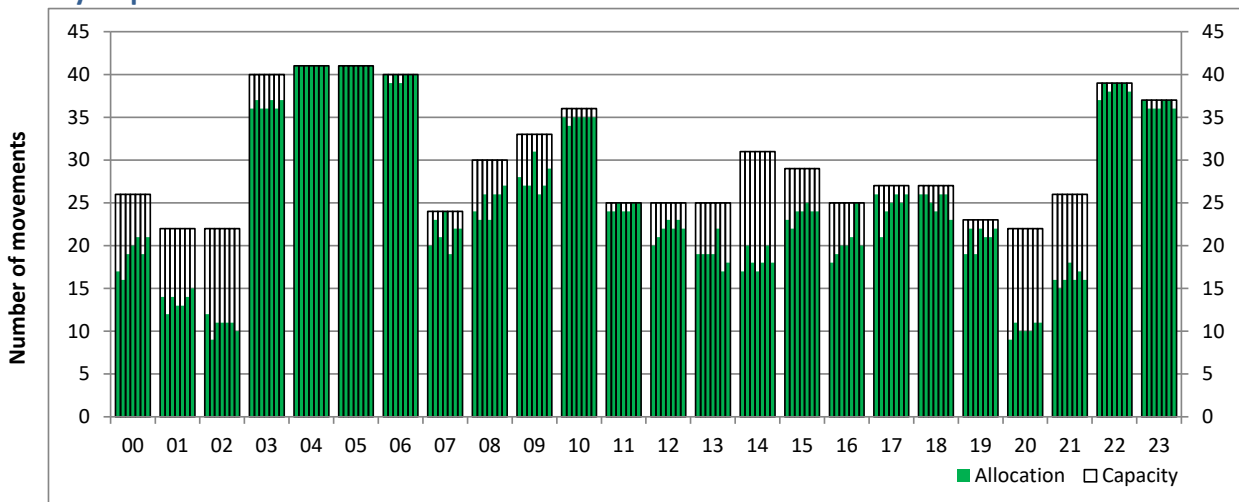
Time: UTC



Hour of day (24 hour format)

## Hourly Departure Allocation

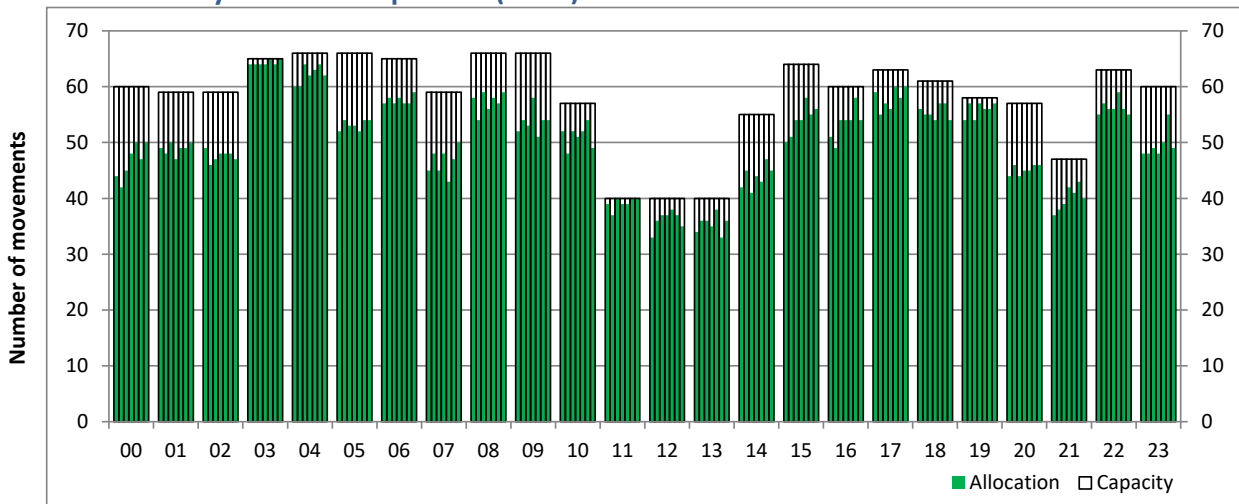
Time: UTC



Hour of day (24 hour format)

## Combined Hourly Arrival & Departure (Total) Allocation

Time: UTC



Hour of day (24 hour format)

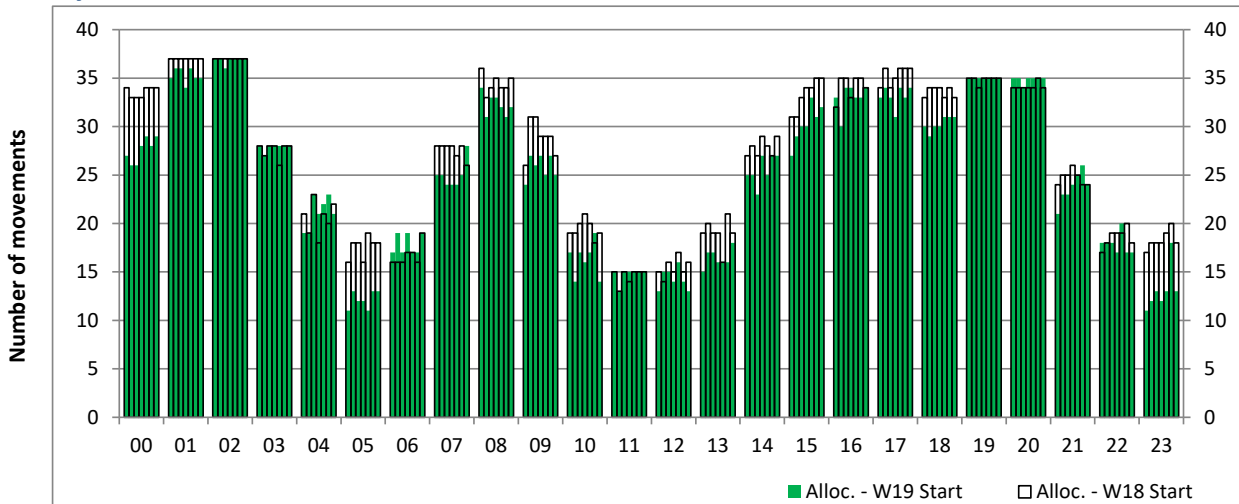
# Peak Week - Runway Allocation Comparison

Comparison of W19 Start vs. W18 Start



## Hourly Arrival Allocation

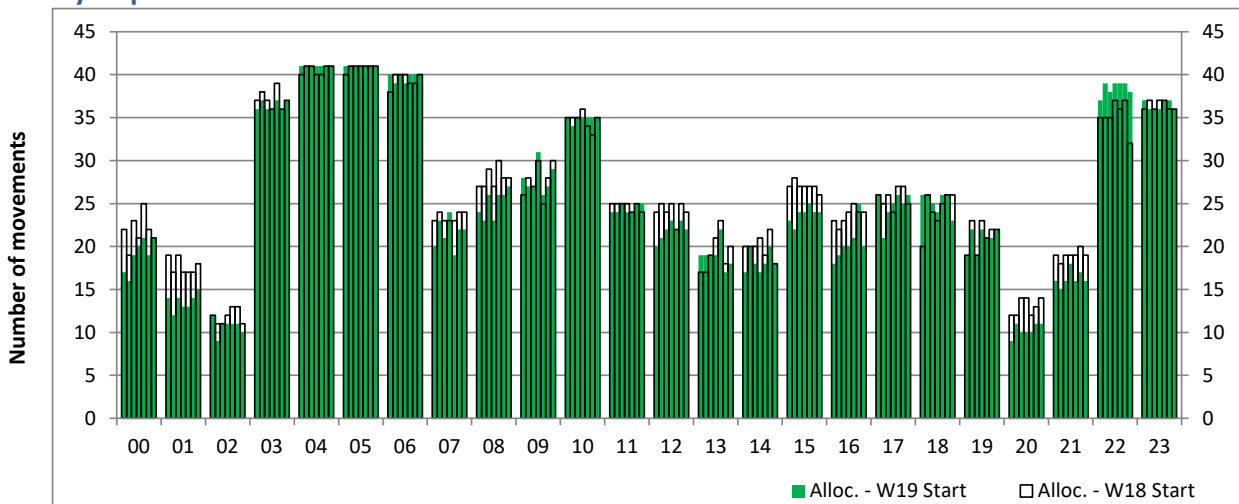
Time: UTC



Hour of day (24 hour format)

## Hourly Departure Allocation

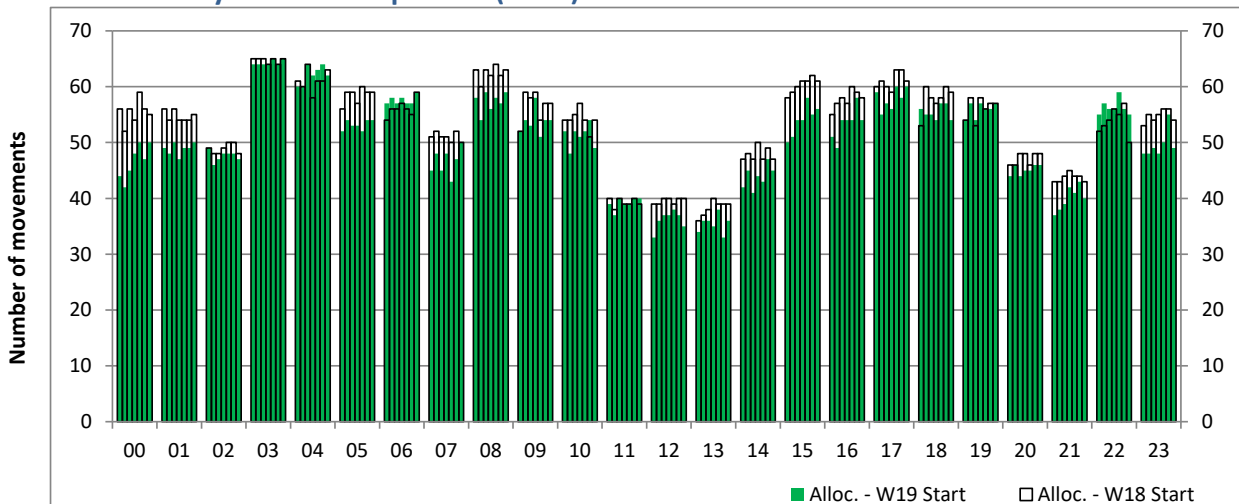
Time: UTC



Hour of day (24 hour format)

## Combined Hourly Arrival & Departure (Total) Allocation

Time: UTC



Hour of day (24 hour format)

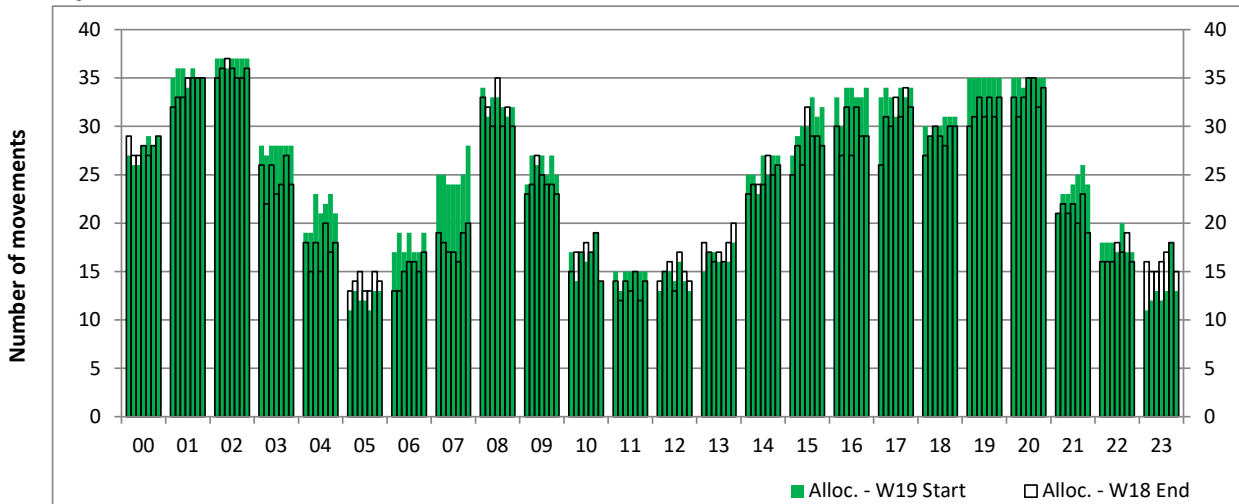
# Peak Week - Runway Allocation Comparison

Comparison of W19 Start vs. W18 End



## Hourly Arrival Allocation

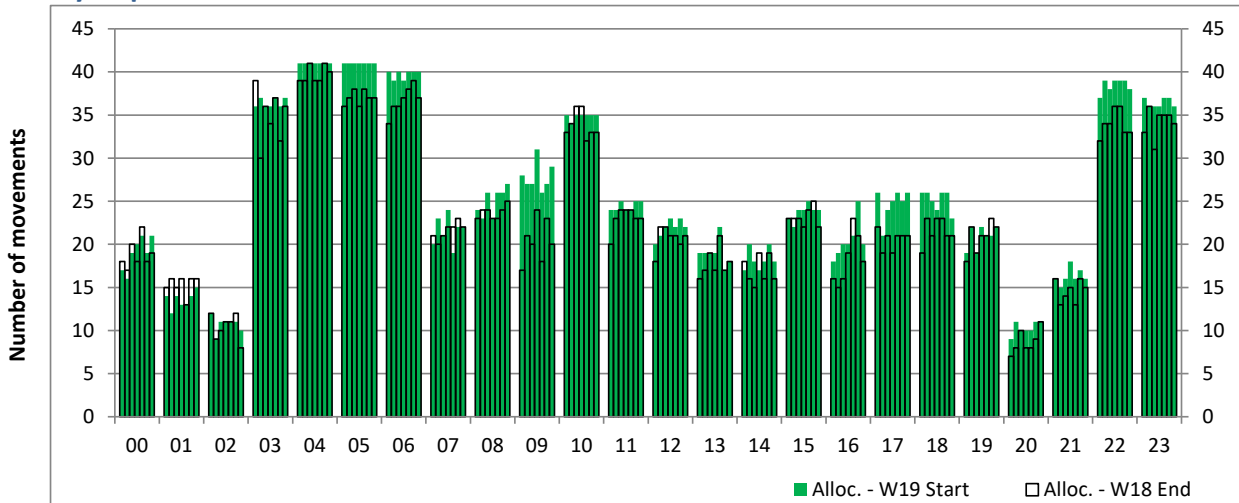
Time: UTC



Hour of day (24 hour format)

## Hourly Departure Allocation

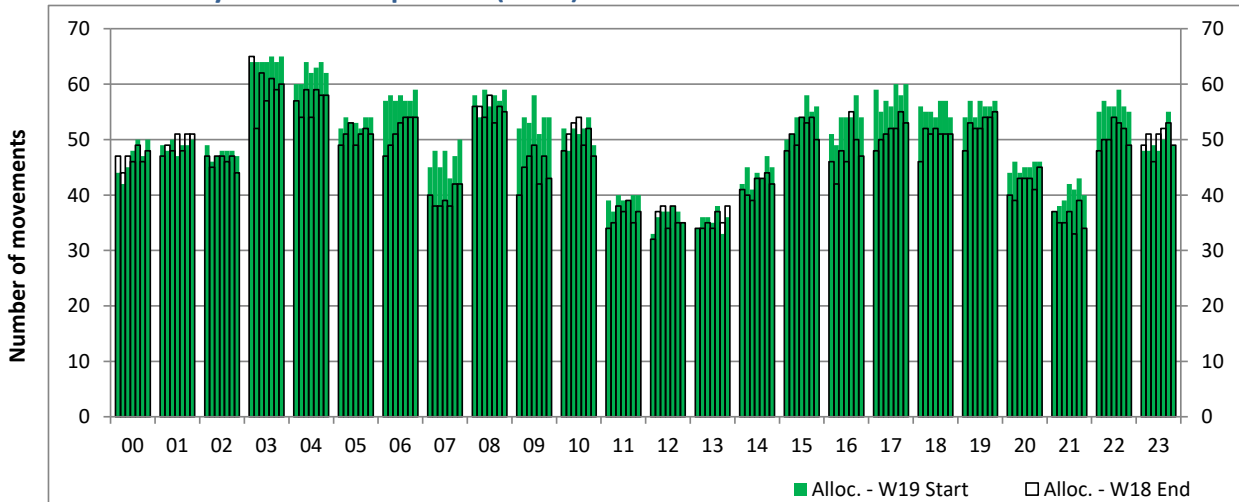
Time: UTC



Hour of day (24 hour format)

## Combined Hourly Arrival & Departure (Total) Allocation

Time: UTC



Hour of day (24 hour format)

# Peak Week - Movements Histogram

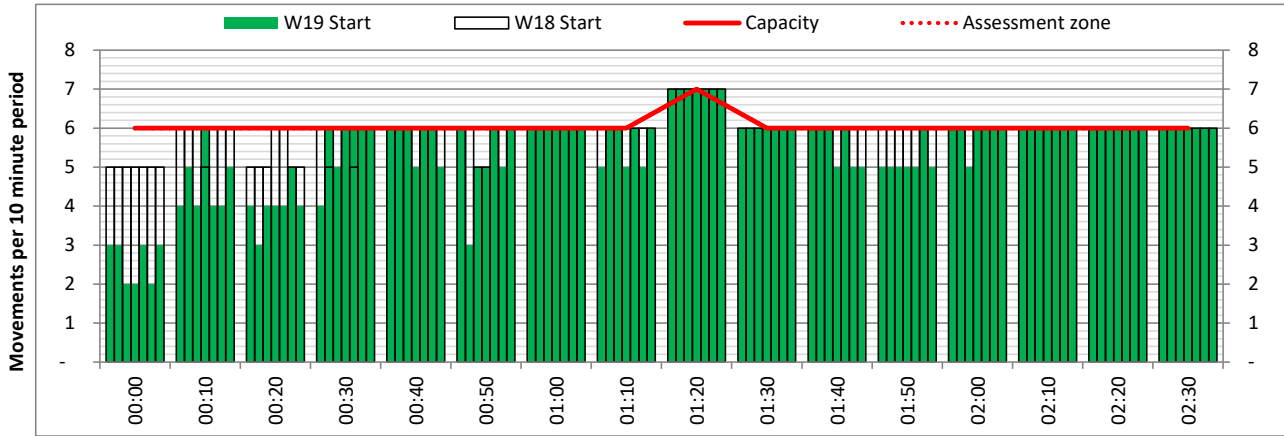
ARRIVAL - 10 minute count rolling every 10 mins (R10)



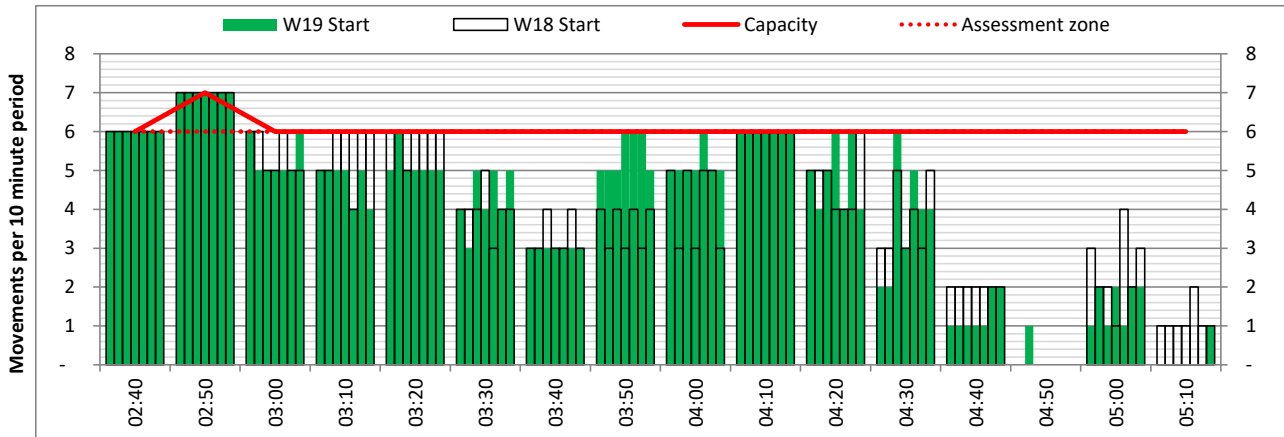
Terminals: All Terminals

Operators: All Operators

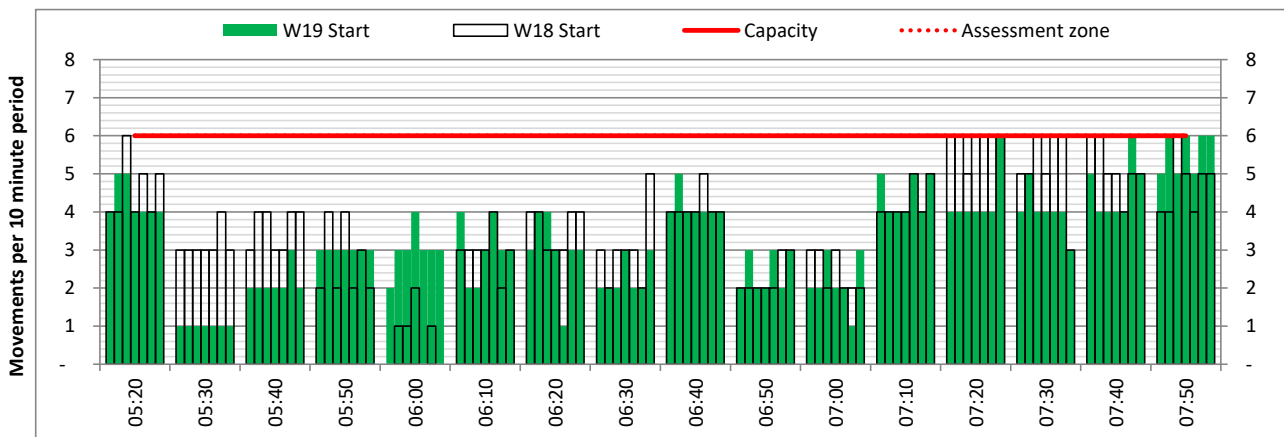
Days: 1234567



Start of count period - Time: UTC



Start of count period - Time: UTC



Start of count period - Time: UTC

# Peak Week - Movements Histogram

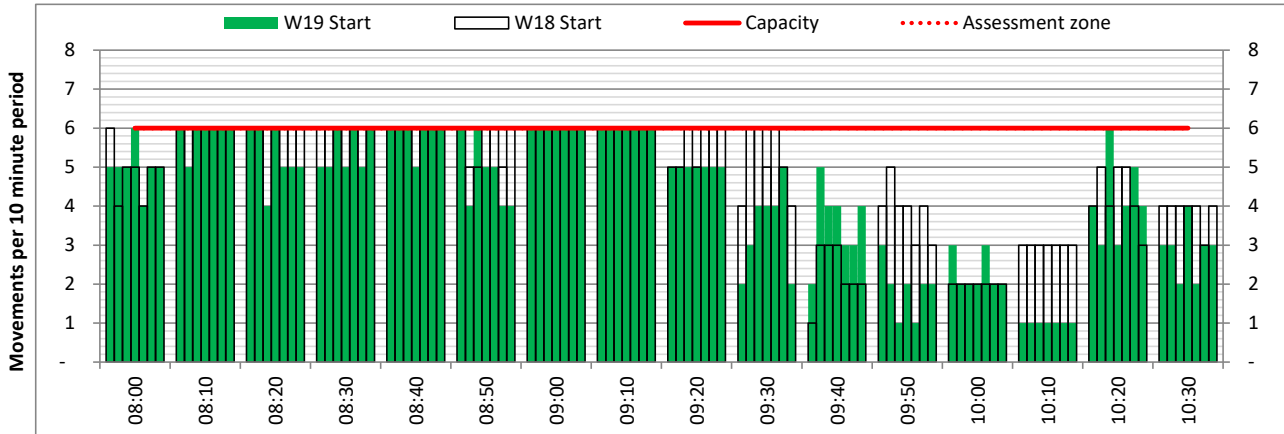
ARRIVAL - 10 minute count rolling every 10 mins (R10)



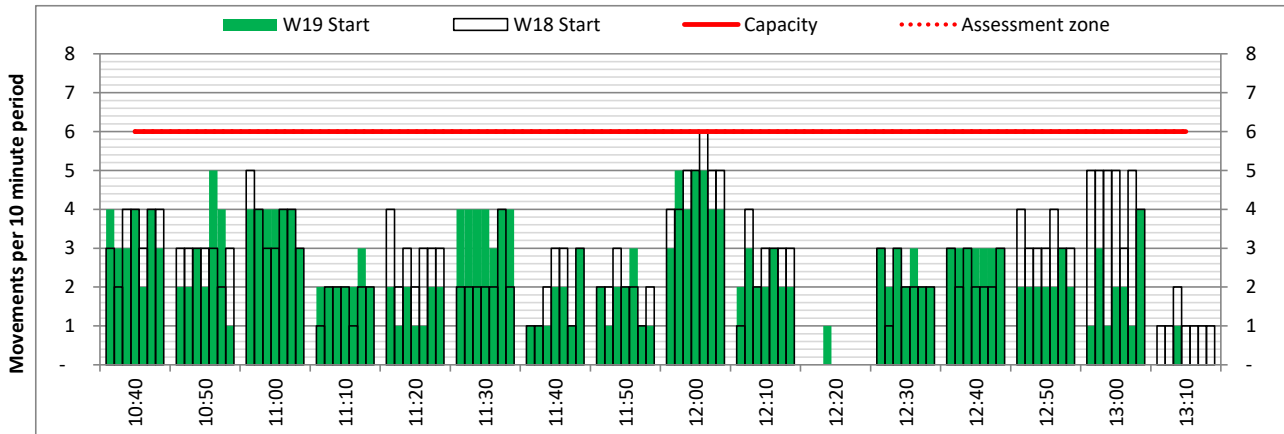
Terminals: All Terminals

Operators: All Operators

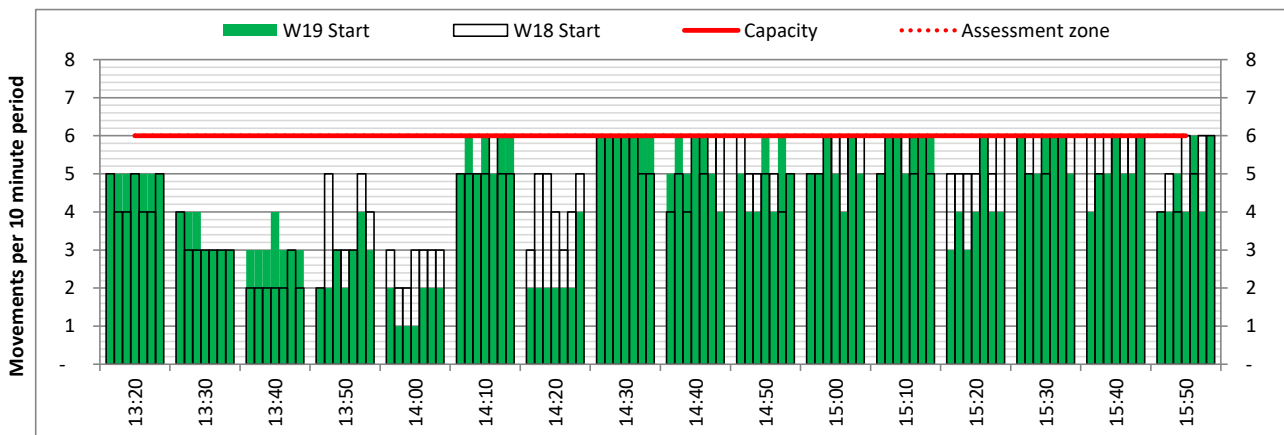
Days: 1234567



Start of count period - Time: UTC



Start of count period - Time: UTC



Start of count period - Time: UTC



# Peak Week - Movements Histogram

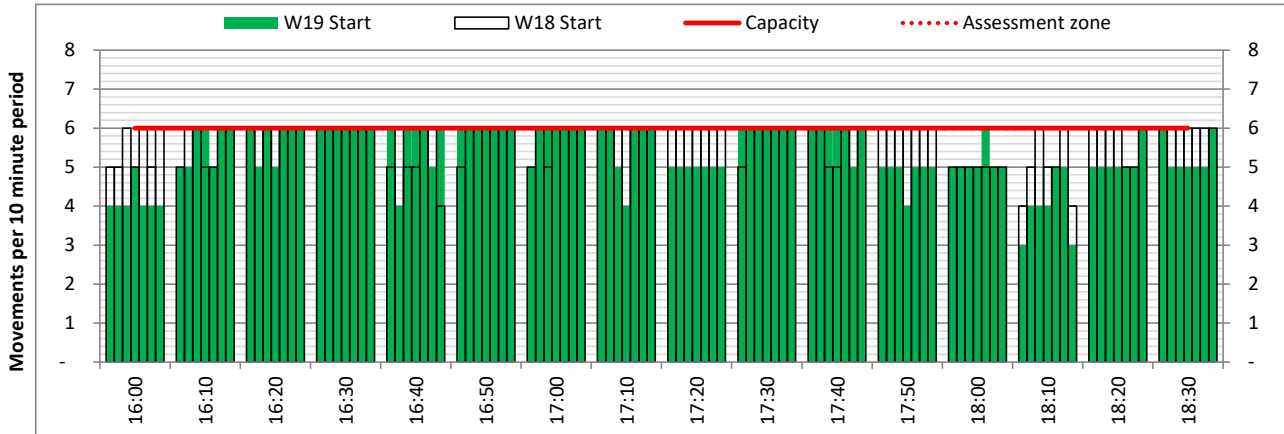
ARRIVAL - 10 minute count rolling every 10 mins (R10)



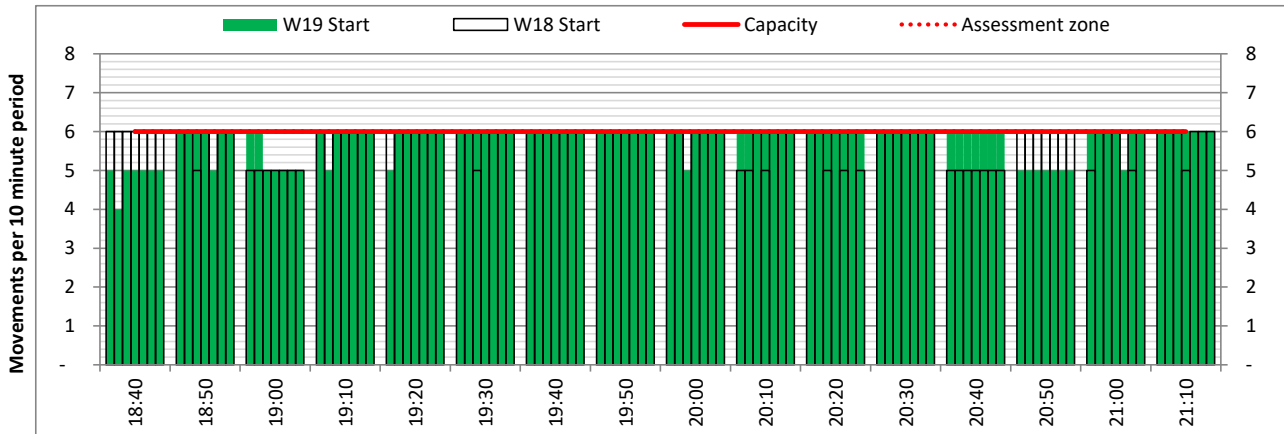
Terminals: All Terminals

Operators: All Operators

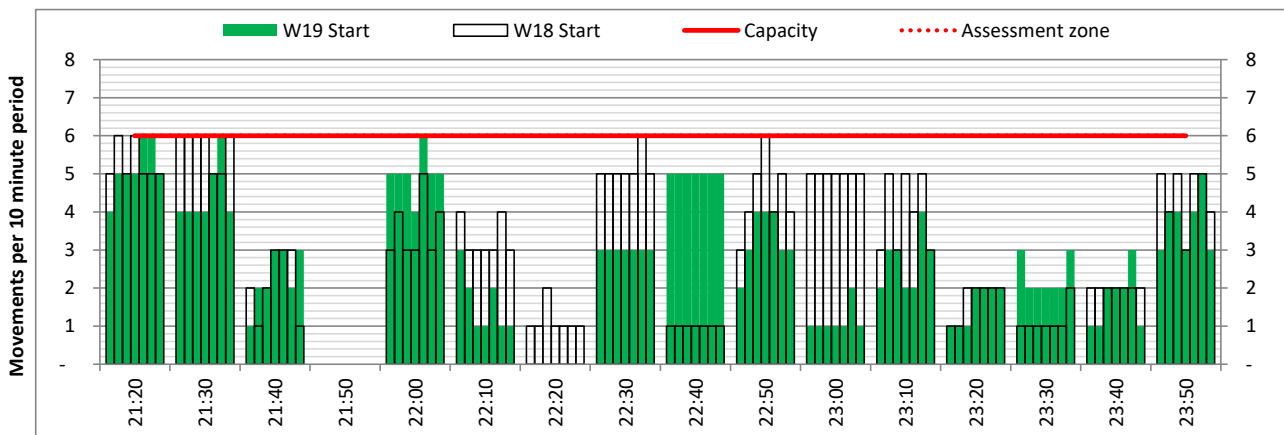
Days: 1234567



Start of count period - Time: UTC



Start of count period - Time: UTC



Start of count period - Time: UTC

# Peak Week - Movements Histogram

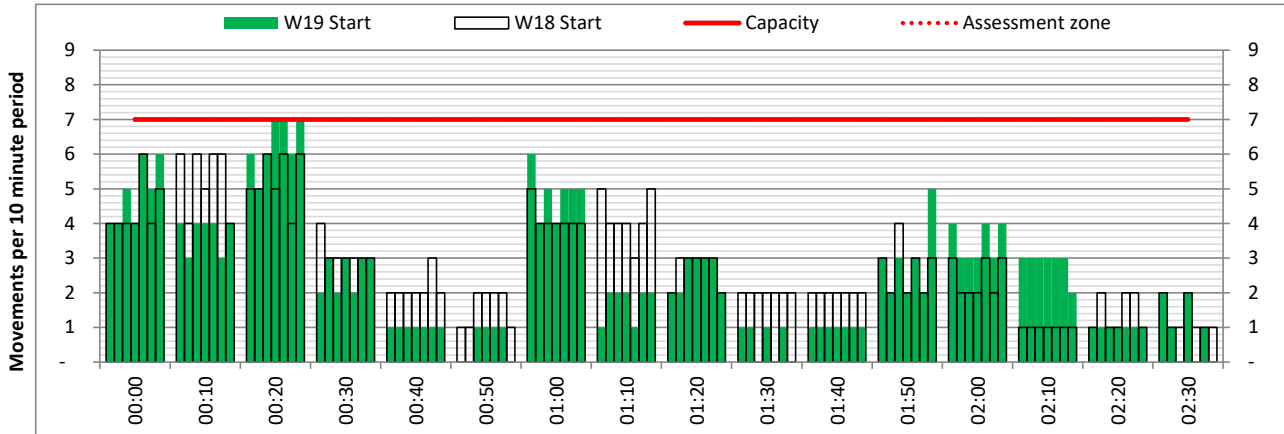
DEPARTURE - 10 minute count rolling every 10 mins (R10)



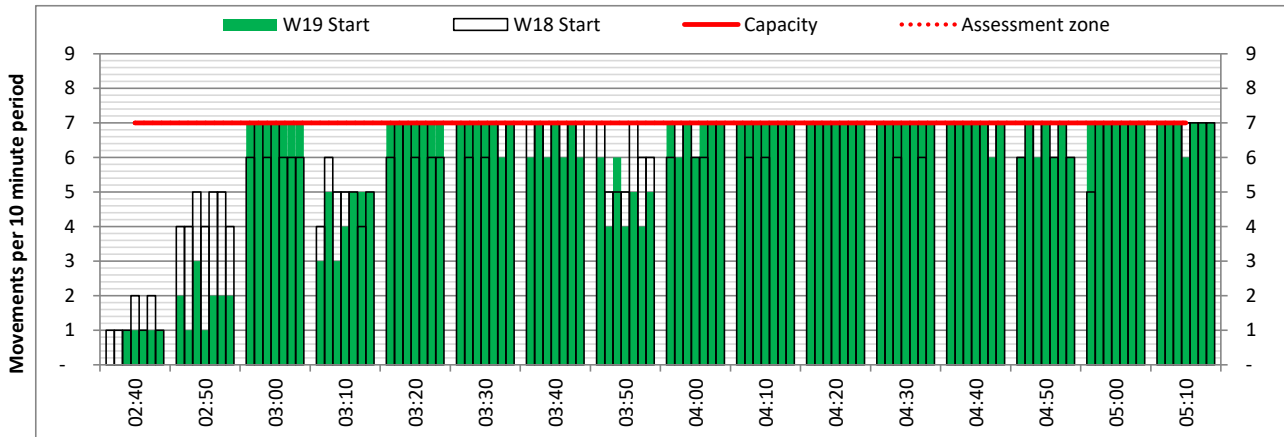
Terminals: All Terminals

Operators: All Operators

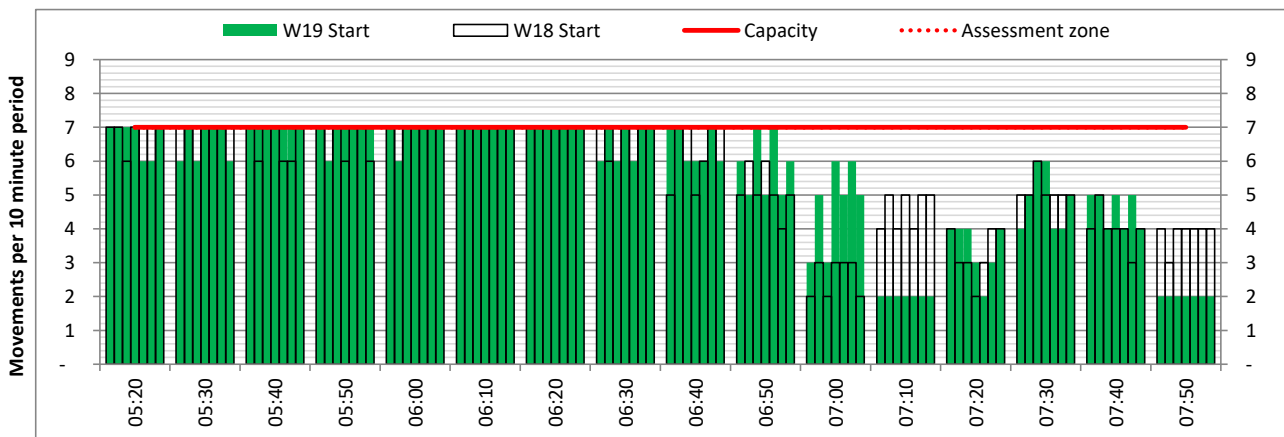
Days: 1234567



Start of count period - Time: UTC



Start of count period - Time: UTC



Start of count period - Time: UTC

# Peak Week - Movements Histogram

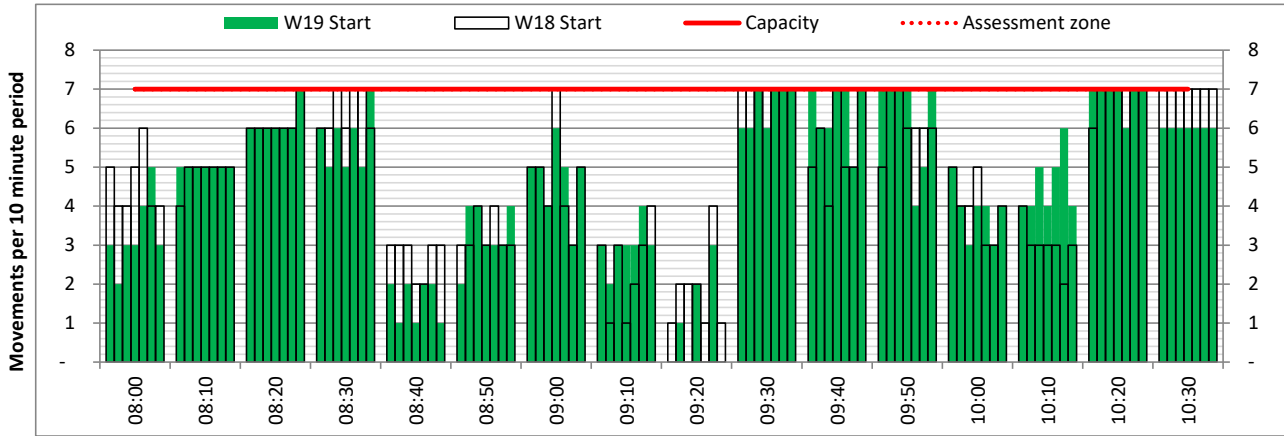
DEPARTURE - 10 minute count rolling every 10 mins (R10)



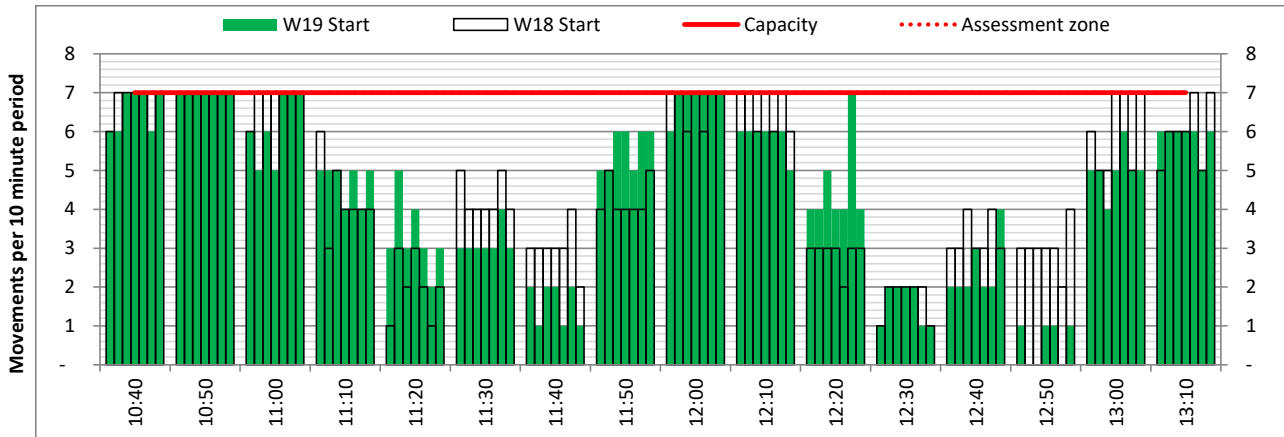
Terminals: All Terminals

Operators: All Operators

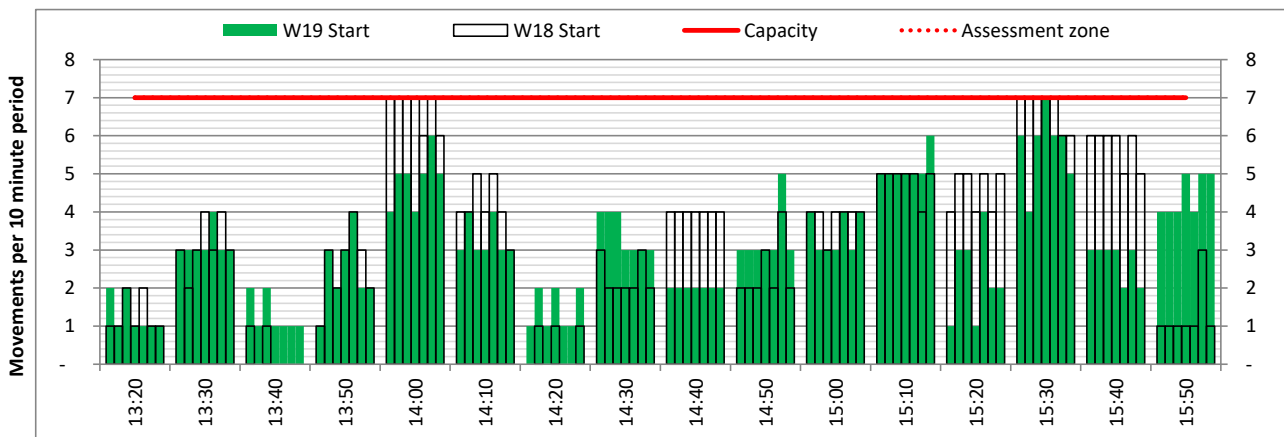
Days: 1234567



Start of count period - Time: UTC



Start of count period - Time: UTC



Start of count period - Time: UTC

# Peak Week - Movements Histogram

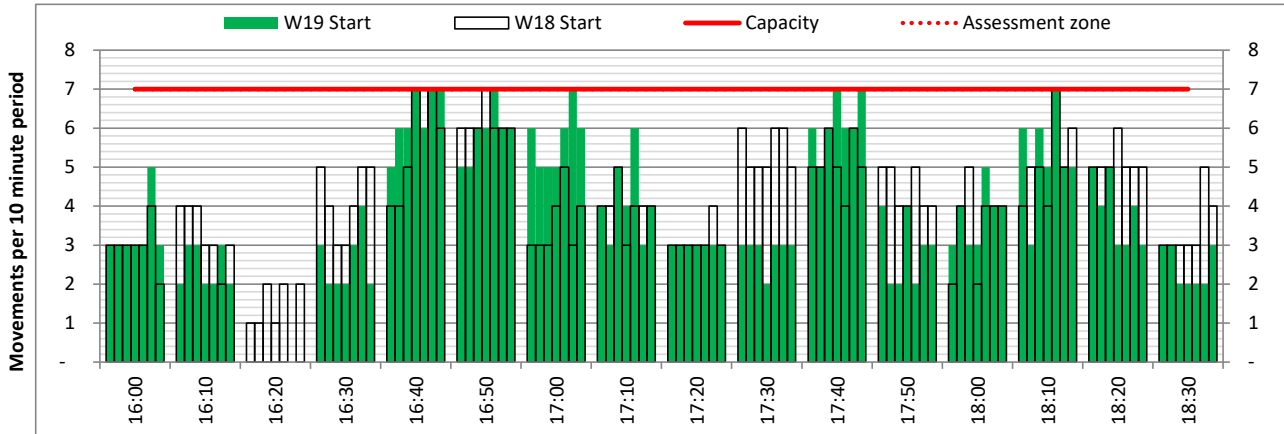
DEPARTURE - 10 minute count rolling every 10 mins (R10)



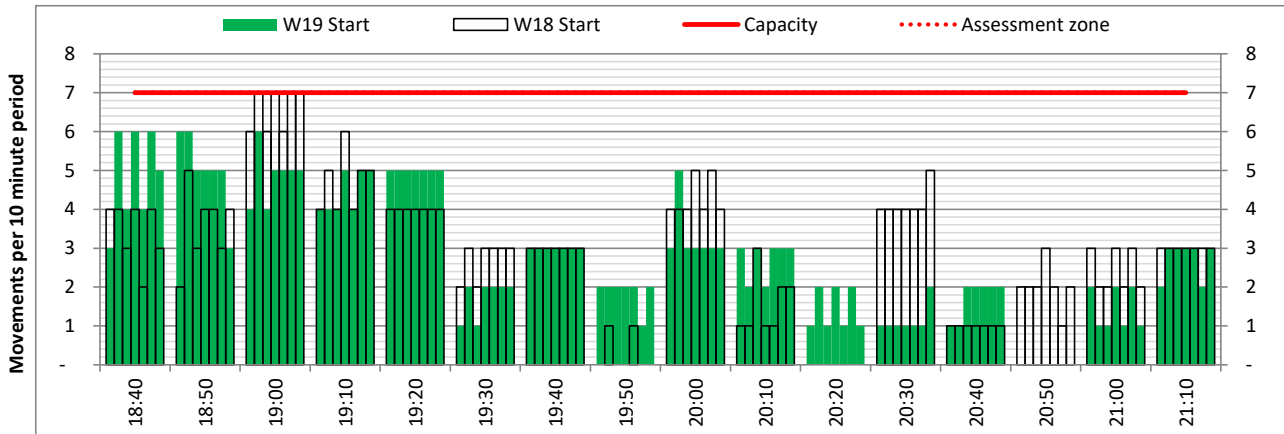
Terminals: All Terminals

Operators: All Operators

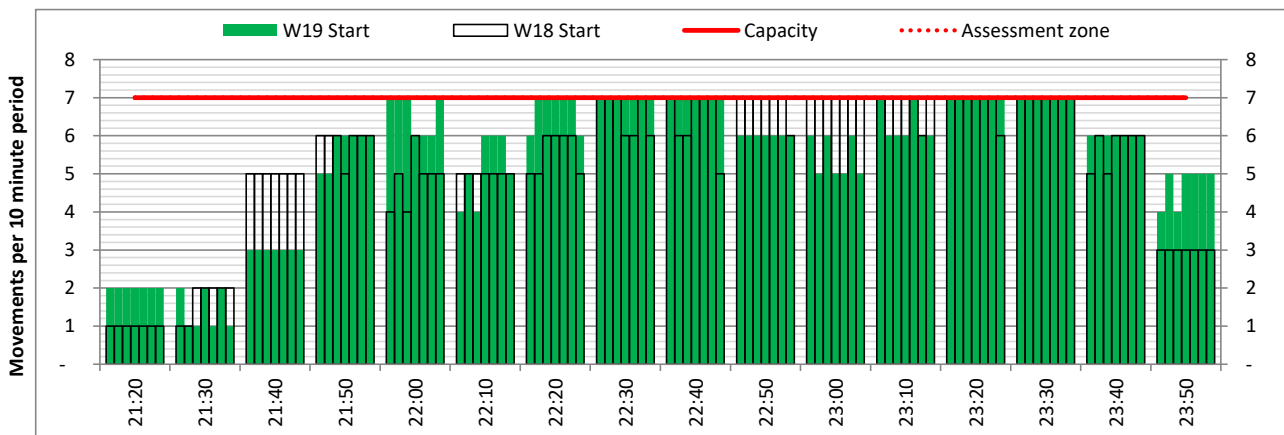
Days: 1234567



Start of count period - Time: UTC



Start of count period - Time: UTC



Start of count period - Time: UTC

# Peak Week - Passengers Histogram

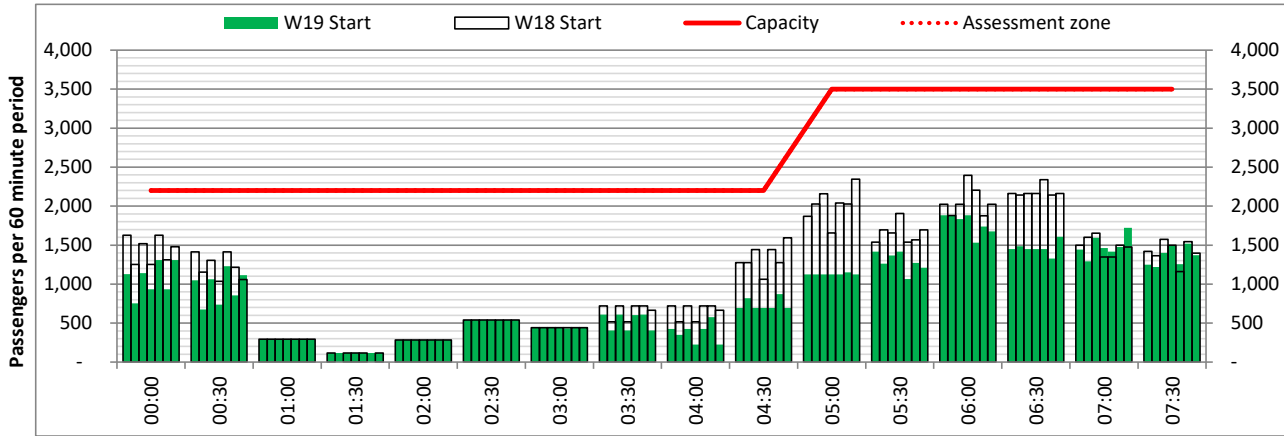
ARRIVAL - 60 minute count rolling every 30 mins (T60/30)



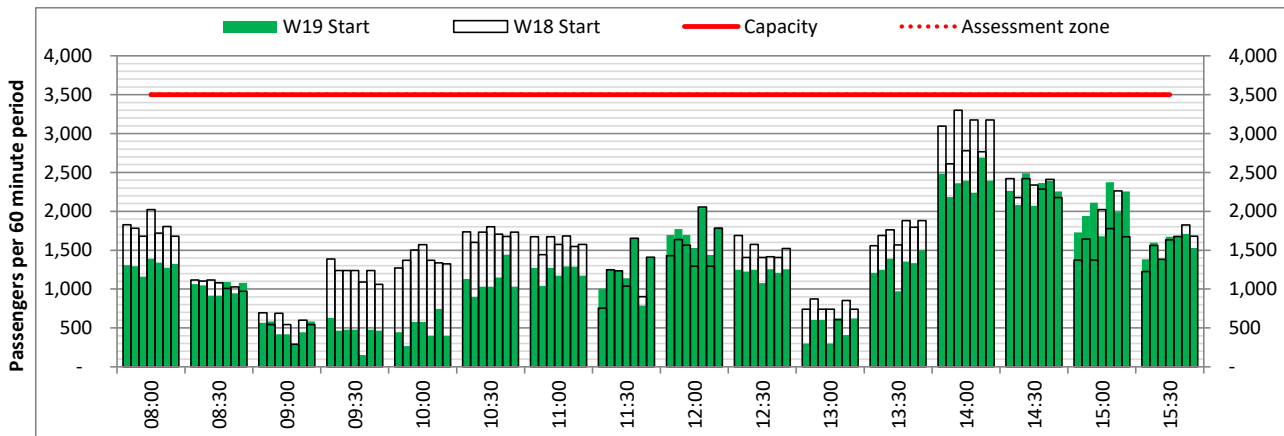
Terminals: 11

Operators: All Operators

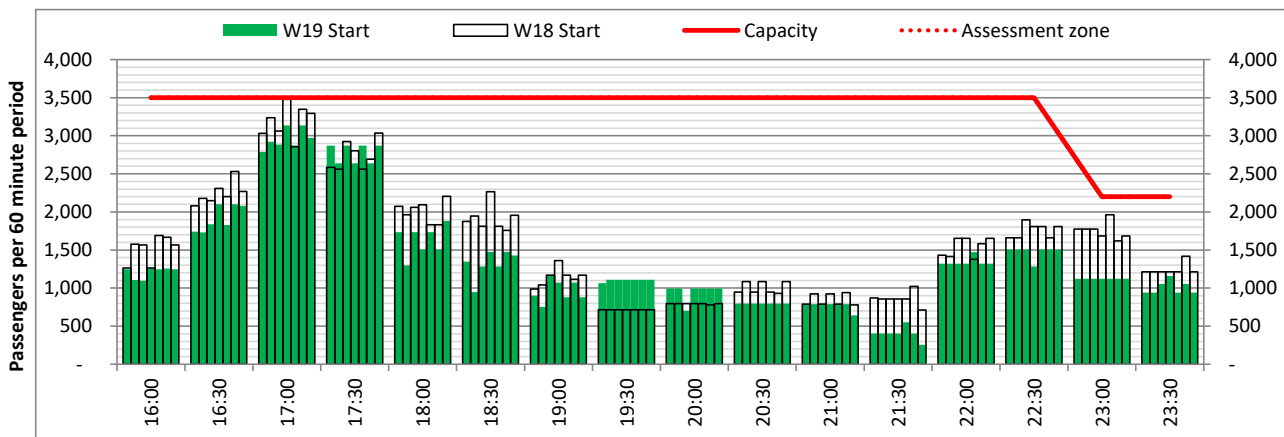
Days: 1234567



Start of count period - Time: UTC



Start of count period - Time: UTC



Start of count period - Time: UTC

# Peak Week - Passengers Histogram

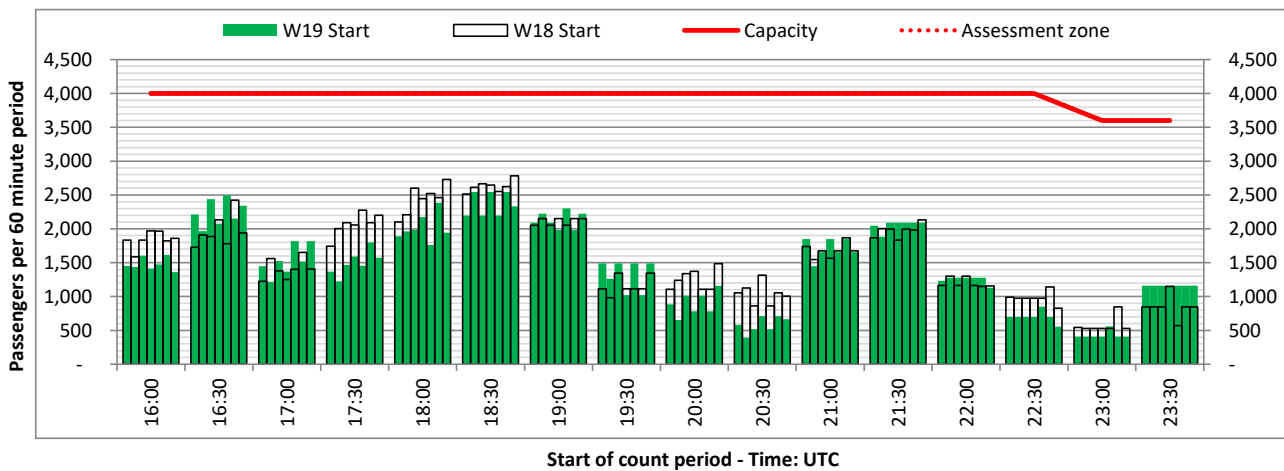
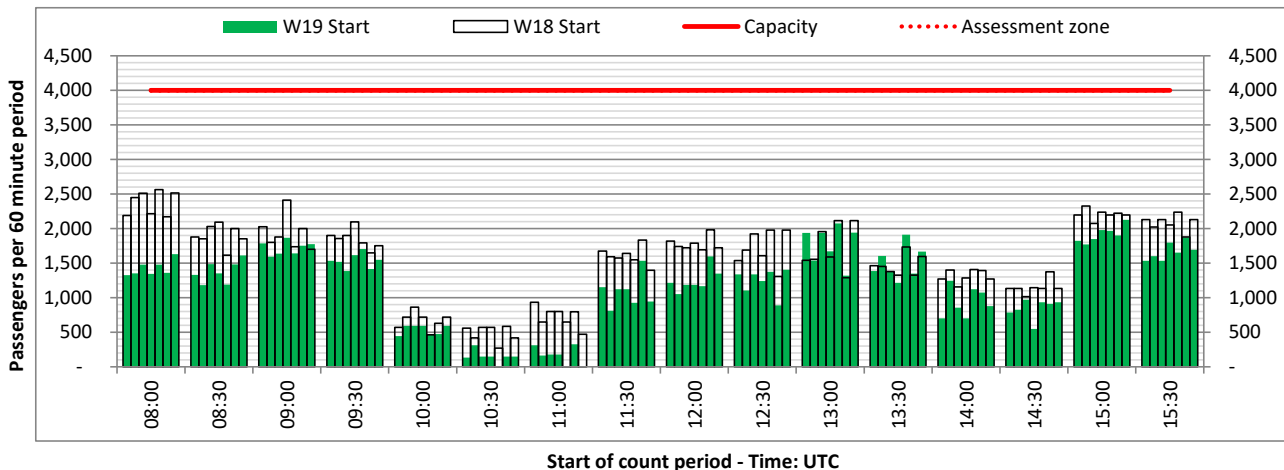
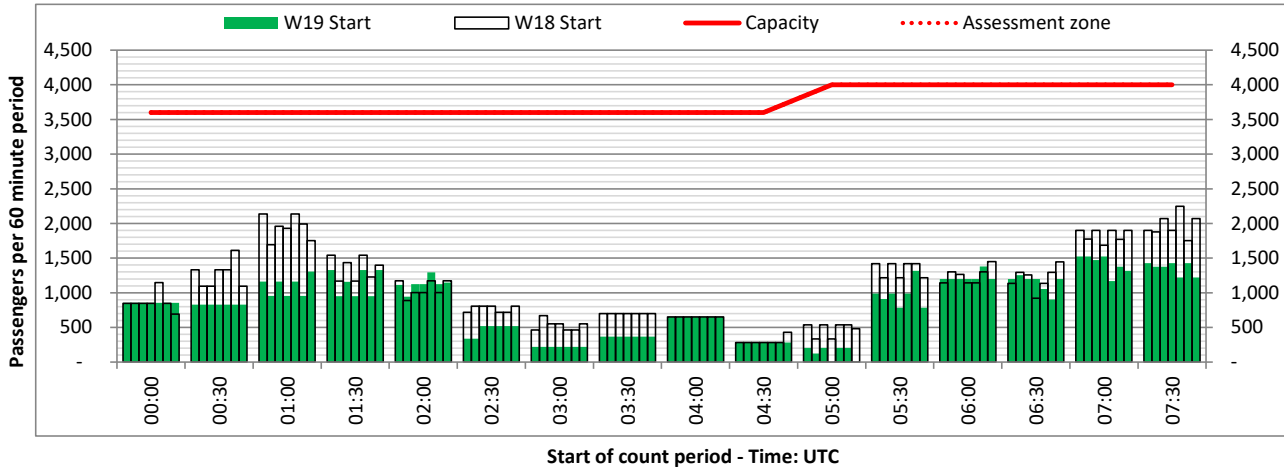
DEPARTURE - 60 minute count rolling every 30 mins (T60/30)



Terminals: 11

Operators: All Operators

Days: 1234567



# Peak Week - Passengers Histogram

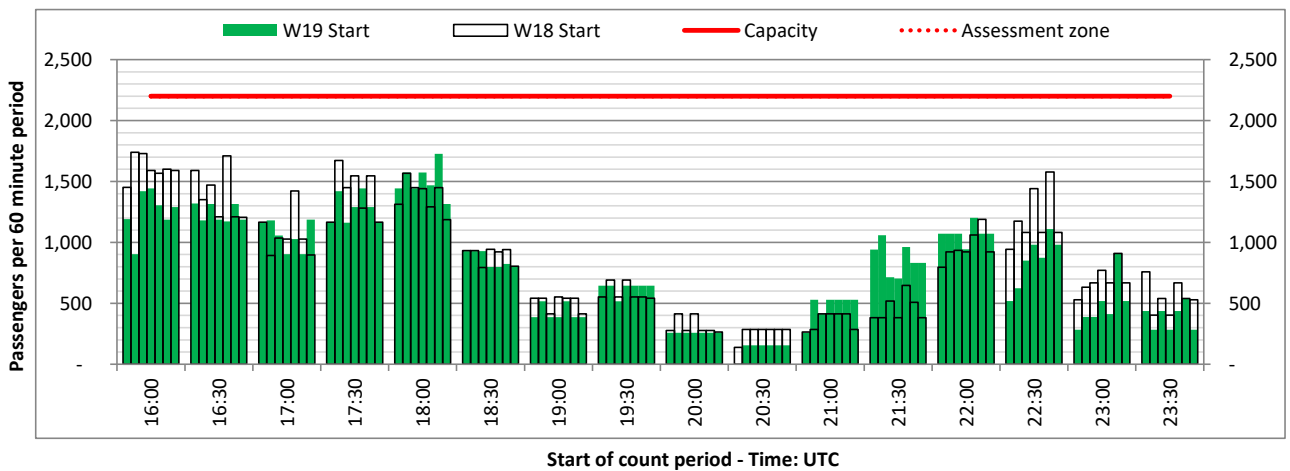
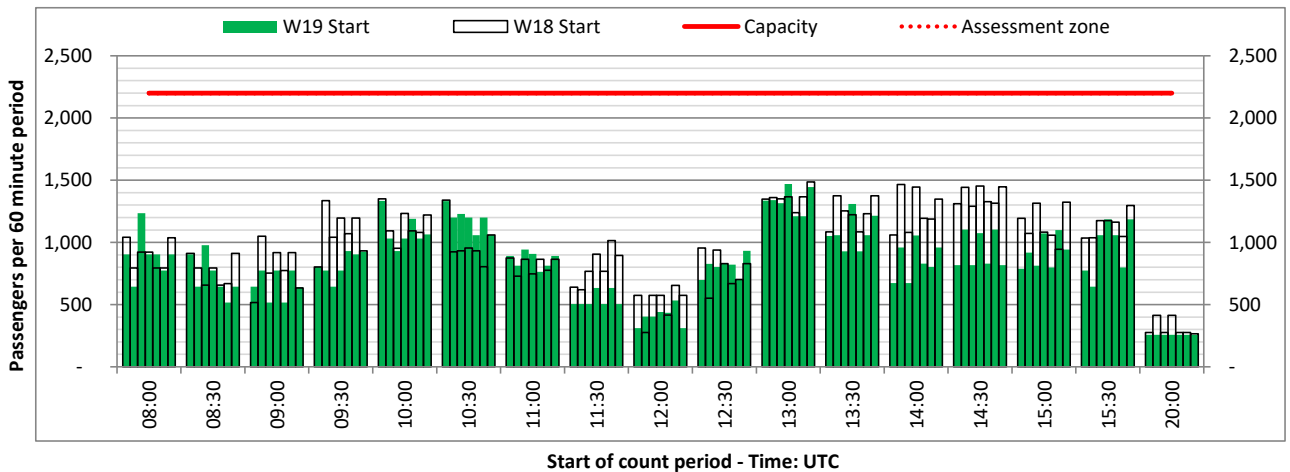
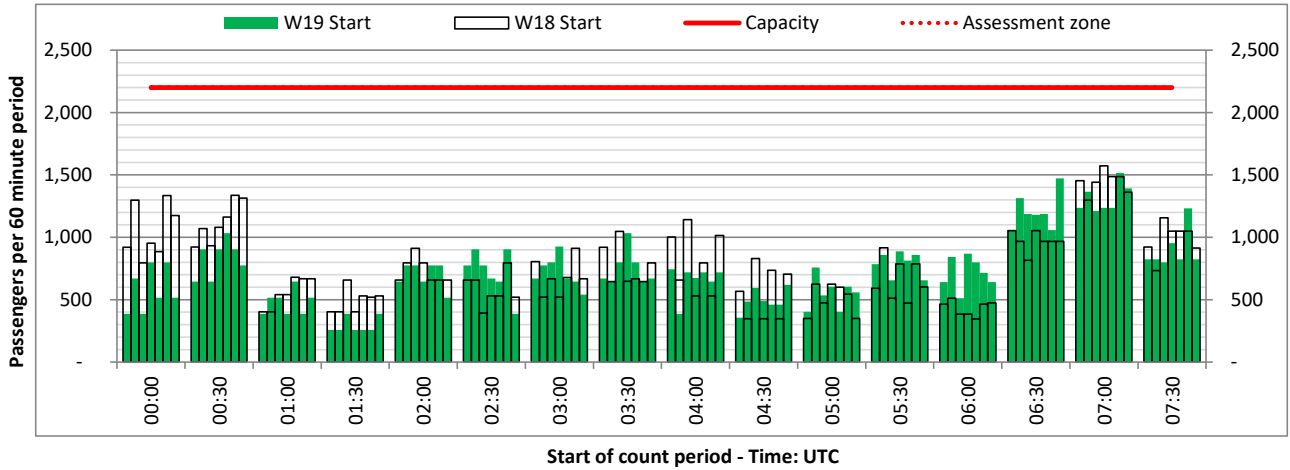
ARRIVAL - 60 minute count rolling every 30 mins (T60/30)



Terminals: 2I

Operators: All Operators

Days: 1234567



# Peak Week - Passengers Histogram

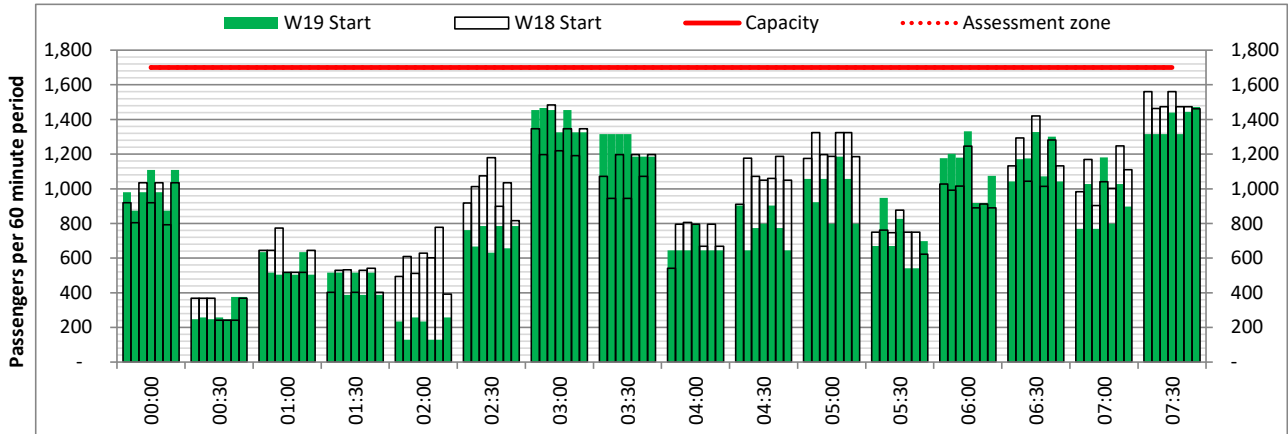
DEPARTURE - 60 minute count rolling every 30 mins (T60/30)



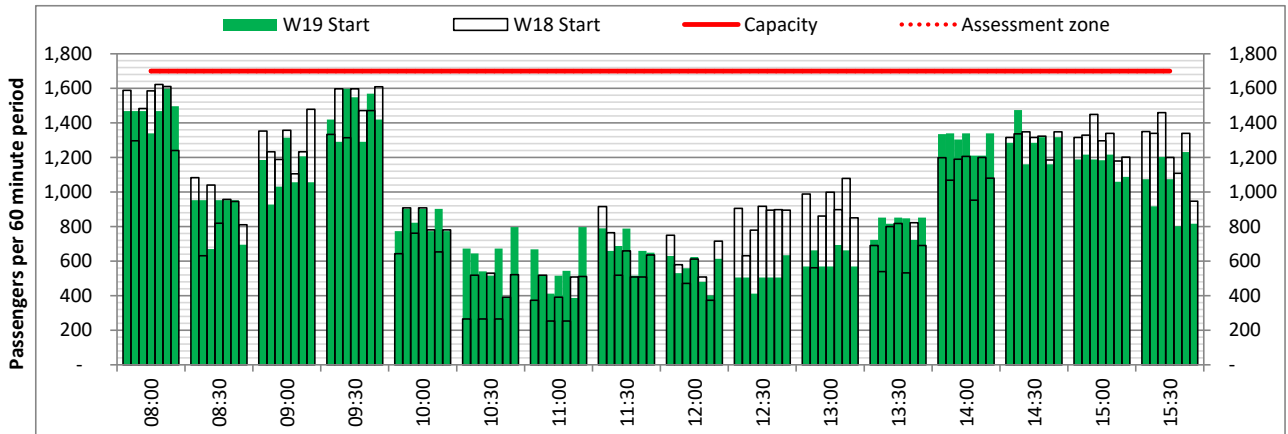
Terminals: 2I

Operators: All Operators

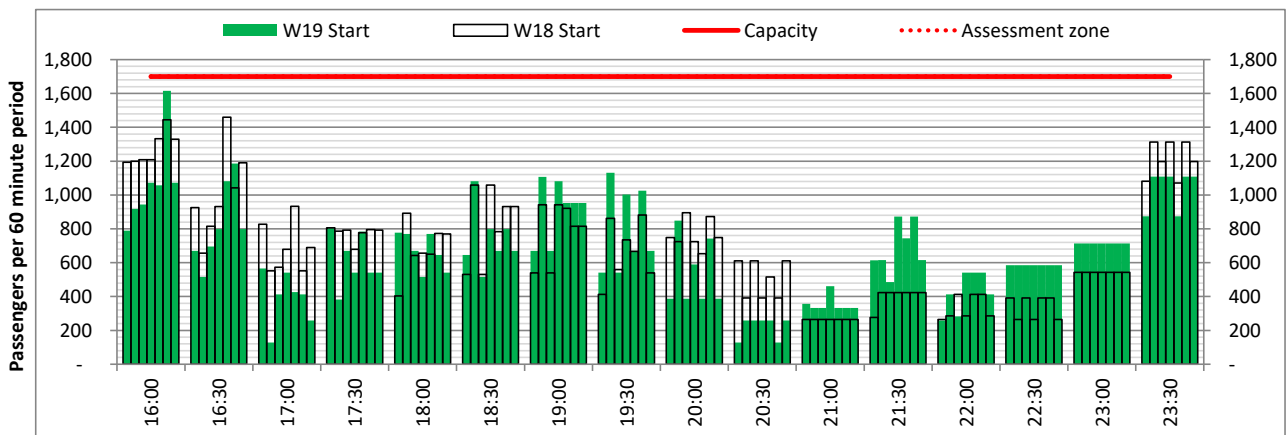
Days: 1234567



Start of count period - Time: UTC



Start of count period - Time: UTC



Start of count period - Time: UTC



# Peak Week - Passengers Histogram

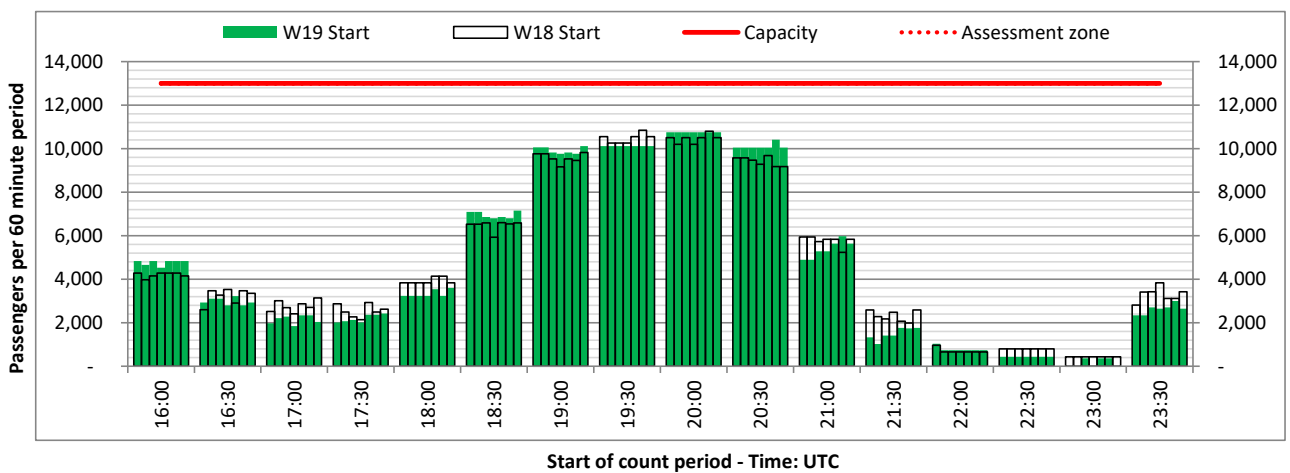
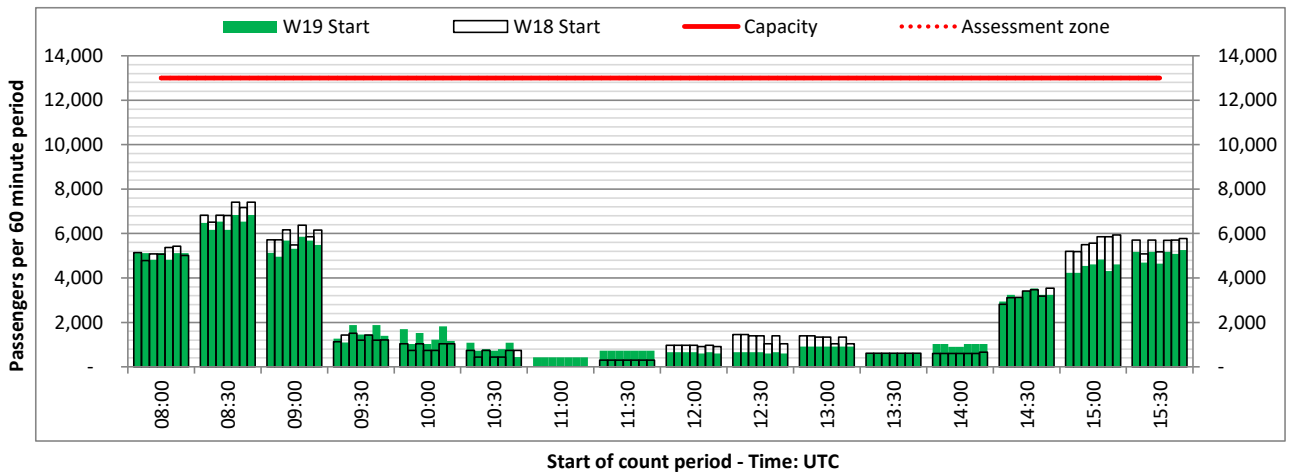
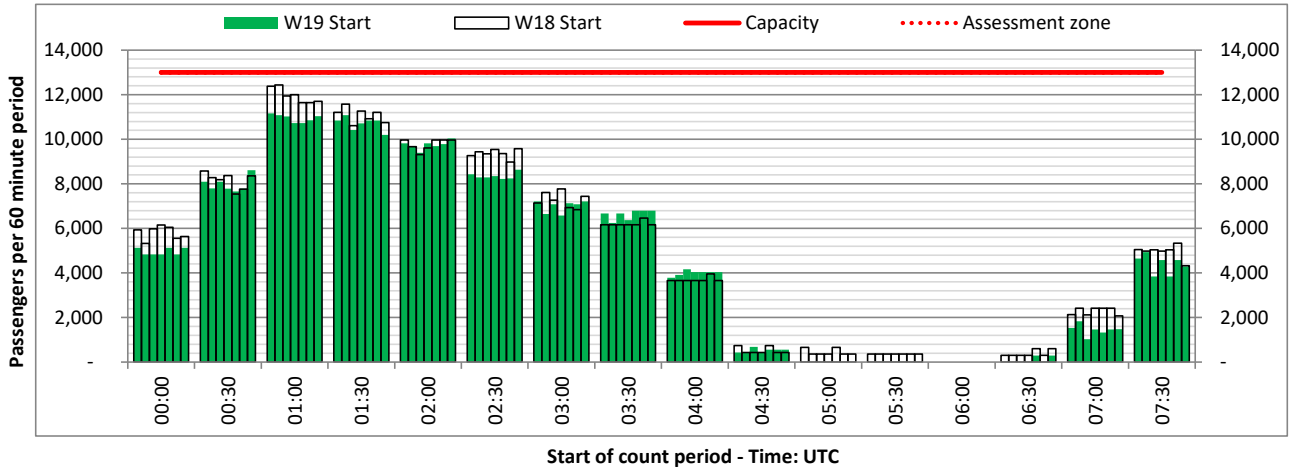
ARRIVAL - 60 minute count rolling every 30 mins (T60/30)



Terminals: 3I

Operators: All Operators

Days: 1234567



# Peak Week - Passengers Histogram

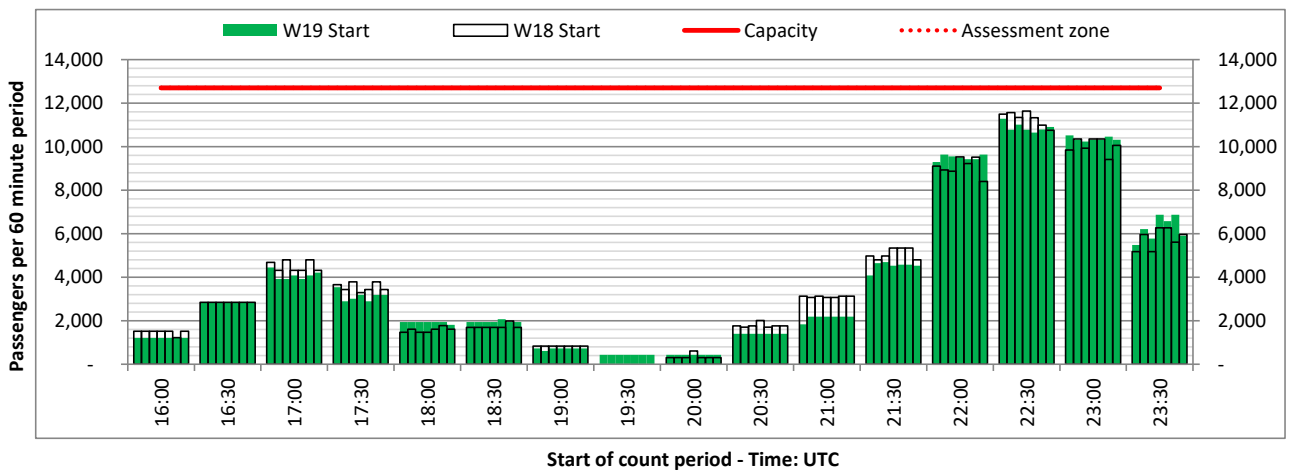
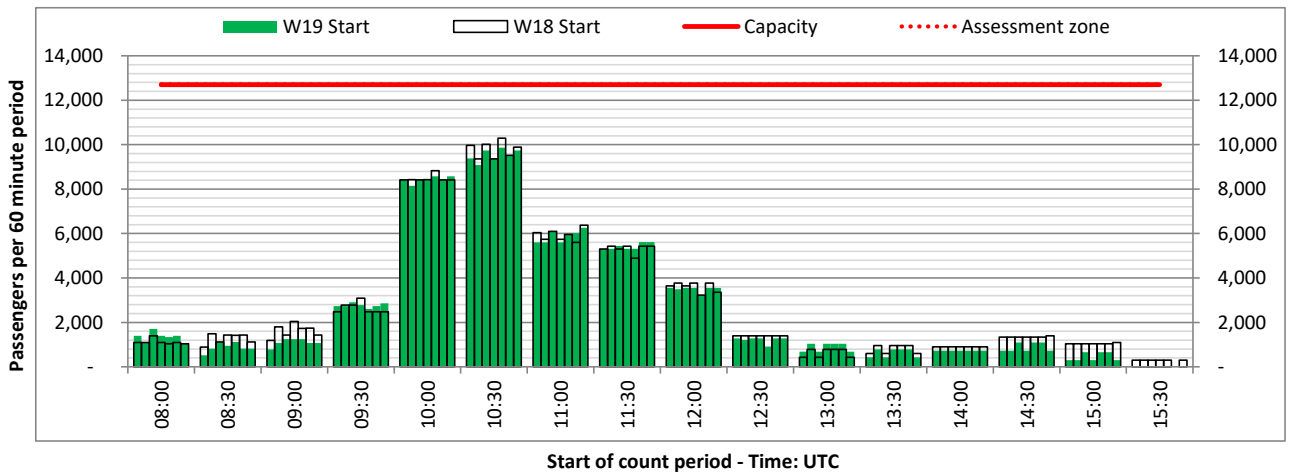
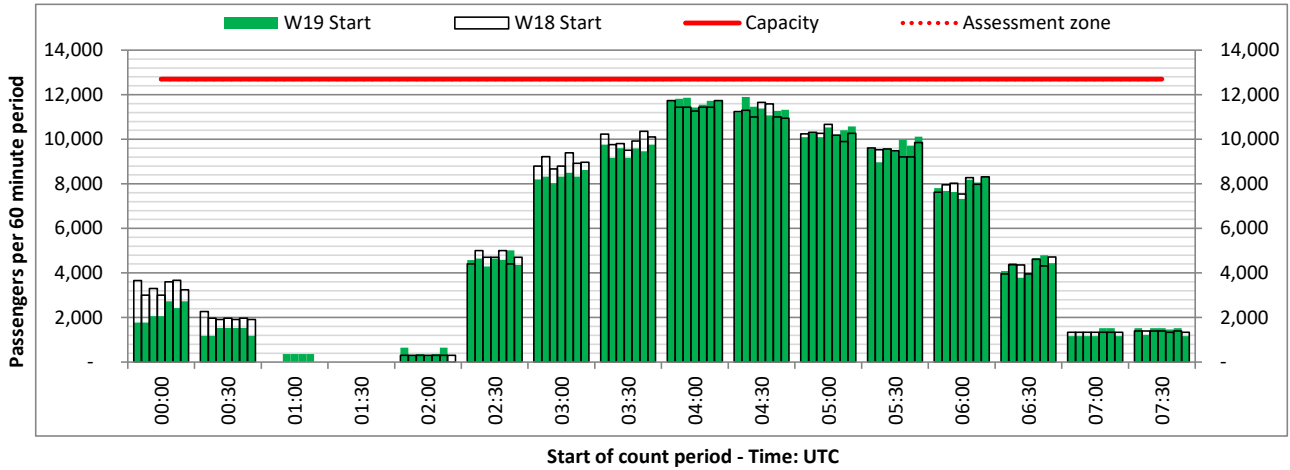
DEPARTURE - 60 minute count rolling every 30 mins (T60/30)



Terminals: 3I

Operators: All Operators

Days: 1234567



Maximum

Time UTC	0	100	200	300	400	500	600	700	800	900	1000	1100	1200	1300	1400	1500	1600	1700	1800	1900	2000	2100	2200	2300
<b>Arrivals</b>																								
<b>Max. Arrival</b>	85%	97%	100%	100%	92%	52%	76%	80%	94%	77%	73%	75%	80%	82%	93%	94%	97%	94%	91%	100%	100%	100%	83%	78%
<b>Departures</b>																								
<b>Max. Departure</b>	81%	68%	55%	93%	100%	100%	100%	100%	90%	94%	97%	100%	92%	88%	65%	86%	100%	96%	96%	96%	50%	69%	100%	100%
<b>Totals</b>																								
<b>Max. Total</b>	83%	85%	83%	100%	97%	82%	91%	85%	89%	88%	95%	100%	95%	95%	85%	91%	97%	95%	93%	98%	81%	91%	94%	92%

Average

Time UTC	0	100	200	300	400	500	600	700	800	900	1000	1100	1200	1300	1400	1500	1600	1700	1800	1900	2000	2100	2200	2300
<b>Arrivals</b>																								
<b>Average Arrival</b>	81%	95%	100%	99%	85%	49%	71%	71%	90%	74%	63%	74%	71%	75%	88%	87%	94%	92%	89%	100%	100%	91%	74%	57%
<b>Departures</b>																								
<b>Average Departure</b>	73%	62%	49%	91%	100%	100%	99%	90%	83%	84%	97%	98%	87%	76%	59%	82%	82%	92%	93%	91%	47%	63%	99%	98%
<b>Totals</b>																								
<b>Average Total</b>	78%	83%	81%	99%	94%	81%	89%	79%	87%	81%	90%	98%	90%	89%	80%	84%	89%	92%	91%	96%	79%	85%	89%	83%

## Primary Constraints by Terminal - Peak Week



Arrival/Departure	OK	R60	R10	GRD	T60	Grand Total
A	3973	86	136		7	4202
D	4109	91	46	23	4	4273
<b>Grand Total</b>	<b>8082</b>	<b>177</b>	<b>182</b>	<b>30</b>	<b>4</b>	<b>8475</b>

Percentage	OK	R60	R10	GRD	T60	Grand Total
A	94.6%	2.0%	3.2%	0.2%	0.0%	100.0%
D	96.2%	2.1%	1.1%	0.5%	0.1%	100.0%

Time UTC	0	100	200	300	400	500	600	700	800	900	1000	1100	1200	1300	1400	1500	1600	1700	1800	1900	2000	2100	2200	2300	Grand Total
1I	89	61	63	21	34	61	137	138	134	109	42	50	107	88	147	169	113	170	152	103	65	78	98	71	2300
OK	80	61	63	21	22	60	123	123	125	99	41	49	89	81	139	162	101	145	143	102	59	78	97	70	2133
R60	7				7			8		7		1	17	7		6	6	11	7	1	6				91
R10	2				5		14	7	9					1				8	1				1	1	49
GRD						1				3	1		1		7	1	6	6	1						27

Time UTC	0	100	200	300	400	500	600	700	800	900	1000	1100	1200	1300	1400	1500	1600	1700	1800	1900	2000	2100	2200	2300	Grand Total
2I	80	56	49	112	69	79	95	116	124	94	102	75	49	101	112	109	123	77	116	70	41	40	71	61	2021
OK	77	48	45	104	66	71	93	115	119	79	101	75	43	101	108	107	122	71	107	66	36	27	71	61	1913
R10		3	2	1	1	4	1		4	15			1		3			6	4	3	4	8			60
R60	3	5	2	7	2	4	1						5		1				5	1	1	5			42
T60									1		1					1									4
GRD								1								1									2

Time UTC	0	100	200	300	400	500	600	700	800	900	1000	1100	1200	1300	1400	1500	1600	1700	1800	1900	2000	2100	2200	2300	Grand Total
3I	153	211	221	316	326	229	162	58	130	147	199	140	83	53	47	99	132	158	120	212	210	162	221	201	3990
OK	150	207	221	315	315	229	152	56	130	136	198	138	77	53	40	99	126	140	115	210	210	146	219	201	3883
R10	3	4		1	7		8			8	1		1		7		6	14	3	2		2	2		69
R60					4		2	2		3		2	5						4	2			14		38

Time UTC	0	100	200	300	400	500	600	700	800	900	1000	1100	1200	1300	1400	1500	1600	1700	1800	1900	2000	2100	2200	2300	Grand Total
FRT	4	14		1	6	3	8	14	12	26	15	9	14	6	1	1	6			6			4	14	164
OK	4	14		1	6	3	7	14	9	20	14	9	14	6	1	1	6			6			4	14	153
R60										6															6
R10									3		1														4
GRD							1																		1

Runway Reason Code	
R60	60 Min Runway Availability
R30	30 Min Runway Availability
R10	10 Min Runway Availability

Other Reason Code	
AA	Apron Capacity
GRA	Arr Affected by Dep
GRD	Arr Affected by Dep
GA	Gate capacity

Peak Week Code F Arrivals and Departures



Time UTC	0	100	200	300	400	500	600	700	800	900	1000	1100	1200	1300	1400	1500	1600	1700	1800	1900	2000	2100	2200	2300	Grand Total	
Code F Arrivals	21	114	42	71	21	1		13	29	22	7		4			35	35	7	21	84	91	14	11	1	644	
Emirates	21	114	42	70	21			12	28	21	7					35	35	7	21	84	91	14	7		630	
1	3	17	6	10	3			2	4	3	1					5	5	1	3	12	13	2	1		91	
2	3	16	6	10	3			2	4	3	1					5	5	1	3	12	13	2	1		90	
3	3	16	6	10	3			1	4	3	1					5	5	1	3	12	13	2	1		89	
4	3	16	6	10	3			2	4	3	1					5	5	1	3	12	13	2	1		90	
5	3	16	6	10	3			1	4	3	1					5	5	1	3	12	13	2	1		89	
6	3	16	6	10	3			2	4	3	1					5	5	1	3	12	13	2	1		90	
7	3	17	6	10	3			2	4	3	1					5	5	1	3	12	13	2	1		91	
UPS				1		1		1	1	1			4										4	1	14	
1									1																1	
2													1										1		2	
3													1										1		2	
4													1										1		2	
5													1										1		2	
6									1															1	2	
7				1		1		1																	3	
Time UTC	0	100	200	300	400	500	600	700	800	900	1000	1100	1200	1300	1400	1500	1600	1700	1800	1900	2000	2100	2200	2300	Grand Total	
Code F Departures	14			56	100	63	56	7	7		49	35	28					7	7		7	7	56	89	588	
Emirates	2			8	14	9	8	1	1		7	5	4					1	1		1	1	8	12	83	
1	2			8	15	9	8	1	1		7	5	4					1	1		1	1	8	13	85	
2	2			8	15	9	8	1	1		7	5	4					1	1		1	1	8	12	84	
3	2			8	14	9	8	1	1		7	5	4					1	1		1	1	8	13	84	
4	2			8	14	9	8	1	1		7	5	4					1	1		1	1	8	13	84	
5	2			8	14	9	8	1	1		7	5	4					1	1		1	1	8	13	84	
6	2			8	14	9	8	1	1		7	5	4					1	1		1	1	8	13	84	
7	4	1				1		1		1	1	1		4											14	
UPS											1															17
1														1												1
2	1													1												2
3	1													1												2
4	1													1												2
5	1													1												2
6		1				1		1		1																4
7		1				1		1		1																4
Grand Total	39	115	42	127	121	65	56	21	36	23	57	36	32	4		35	35	14	28	84	98	21	67	90	1246	

NAC Utilisation View - Peak Week Arrivals and Departures Combined R60 and R10 Availability



ARRIVALS							
UTC	1	2	3	4	5	6	7
0	2	2	2	2	2	2	2
10	2	1	2	0	2	2	1
20	2	2	1	2	1	1	1
30	2	0	1	0	0	0	0
40	0	0	0	1	0	0	1
50	0	3	0	0	0	0	0
100	0	0	0	0	0	0	0
110	0	0	0	0	0	0	0
120	0	0	0	0	0	0	0
130	0	0	0	0	0	0	0
140	0	0	0	0	0	1	0
150	1	1	1	0	0	0	1
200	0	0	0	0	0	0	0
210	0	0	0	0	0	0	0
220	0	0	0	0	0	0	0
230	0	0	0	0	0	0	0
240	0	0	0	0	0	0	0
250	0	0	0	0	0	0	0
300	0	1	0	0	0	0	0
310	0	1	0	0	0	0	0
320	0	0	0	0	0	0	0
330	0	1	0	0	0	0	0
340	0	1	0	0	0	0	0
350	0	1	0	0	0	0	0
400	0	0	1	0	0	0	0
410	0	0	0	0	0	0	0
420	0	2	0	0	0	0	1
430	2	4	0	3	1	1	2
440	2	4	1	3	1	1	2
450	2	4	1	3	1	1	2
500	5	4	4	4	5	4	4
510	6	6	5	6	6	6	5
520	2	1	1	2	2	2	2
530	5	5	5	5	5	5	5
540	4	4	4	4	4	3	4
550	3	3	3	3	3	3	3
600	3	3	2	2	3	2	2
610	2	4	4	3	2	3	3
620	3	2	2	3	5	3	3
630	4	4	4	3	4	4	3
640	1	0	1	1	0	1	1
650	4	3	4	4	3	4	3
700	2	3	0	2	3	3	0
710	1	2	2	2	1	2	1
720	2	2	2	2	2	2	0
730	2	1	2	2	2	2	3
740	0	1	1	1	2	0	1
750	1	0	0	0	1	0	0

DEPARTURES							
UTC	1	2	3	4	5	6	7
0	2	2	1	2	0	1	0
10	3	4	3	3	2	4	3
20	1	2	1	0	0	1	0
30	4	4	4	4	2	4	4
40	5	6	4	5	2	6	4
50	6	7	4	5	2	6	4
100	0	2	1	2	1	1	1
110	6	5	5	5	5	5	5
120	5	5	4	4	4	4	5
130	6	6	7	6	7	6	6
140	6	6	6	6	6	6	6
150	4	5	4	5	4	5	2
200	2	4	3	4	2	4	2
210	3	3	3	3	4	3	4
220	6	6	6	6	6	6	6
230	5	6	7	5	7	6	7
240	6	6	5	5	5	5	5
250	5	6	4	6	5	5	5
300	0	0	0	0	0	0	0
310	4	2	4	3	2	2	2
320	0	0	0	0	0	0	0
330	0	0	0	0	0	1	0
340	1	0	1	0	1	0	1
350	1	3	1	3	2	3	2
400	0	0	0	0	0	0	0
410	0	0	0	0	0	0	0
420	0	0	0	0	0	0	0
430	0	0	0	0	0	0	0
440	0	0	0	0	0	0	0
450	0	0	0	0	0	0	0
500	0	0	0	0	0	0	0
510	0	0	0	0	0	0	0
520	0	0	0	0	0	0	0
530	0	0	0	0	0	0	0
540	0	0	0	0	0	0	0
550	0	0	0	0	0	0	0
600	0	1	0	0	0	0	0
610	0	0	0	0	0	0	0
620	0	0	0	0	0	0	0
630	0	0	0	0	0	0	0
640	0	0	0	1	0	0	0
650	0	1	0	1	0	0	0
700	0	0	1	0	0	0	0
710	0	0	1	0	3	0	0
720	0	0	1	0	3	0	0
730	0	0	1	0	3	0	0
740	0	0	1	0	3	0	0
750	0	0	1	0	3	0	0

<b>Air Transport Movement (ATM)</b>	Any aircraft movement which is either a scheduled or chartered passenger or cargo flight.
<b>Common Travel Area (CTA)</b>	Origin or Destination is in Republic of Ireland or the Channel Islands.
<b>Demand</b>	Unconstrained demand before any schedule adjustments have been made.
<b>"Fill-in"</b>	These are gaps in a historic series of slots which the carrier requests to "Fill-in" at Initial Submissions - Fill-ins will be recognisably part of the historic series and will have the same flight details to qualify as a "Fill-in".
<b>Hist (SHL)</b>	Snapshot of historic schedule rolled over from end of the previous equivalent season - as advised to airlines in the SHLs.
<b>ICAO Size A</b>	Aircraft with wingspan between 0.00m - 14.99m.
<b>ICAO Size B</b>	Aircraft with wingspan between 15.00m - 23.99m.
<b>ICAO Size C</b>	Aircraft with wingspan between 24.00m - 35.99m.
<b>ICAO Size D</b>	Aircraft with wingspan between 36.00m - 51.99m.
<b>ICAO Size E</b>	Aircraft with wingspan between 52.00m - 64.99m.
<b>ICAO Size F</b>	Aircraft with wingspan between 65.00m - 80.00m.
<b>Init Coord</b>	Snapshot of schedule immediately after Initial Coordination is completed - as advised to airlines in the SALs.
<b>Passenger Air Transport Movement (PATM)</b>	Any aircraft movement which is either a scheduled or chartered passenger flight.
<b>Start</b>	Snapshot of schedule shortly before the start of the scheduling season (exact date given below where used).
<b>Time: Local</b>	Times shown are in LOCAL time for the airport/scheduling season.
<b>Time: UTC</b>	Times shown are in Universal Time Constant (UTC).

---

### Data snapshot descriptions

<b>W18 Start</b>	W18 schedule as cleared on Tue 25-Sep-18.
<b>W18 End</b>	W18 schedule as cleared on Fri 31-Mar-17.
<b>W19 Start</b>	W19 schedule as cleared on Wed 12-Sep-18.
<b>Peak Week</b>	Peak week for W18 is Mon 18-Mar-19 to Sun 24-Mar-19. Peak week for W19 is Mon 30-Dec-19 to Sun 05-Jan-20.

---

### For ACL use

	Airport-Season-Branch-Resource	From date	To date	Time
Full Season Rep 1	DXB-W18-SOS Report-Standard	Sun 28-Oct-2018	Sat 30-Mar-2019	UTC
Full Season Rep 2	DXB-W18-End-Standard	Sun 28-Oct-2018	Sat 30-Mar-2019	UTC
Full Season Rep 3	DXB-W19-SOS Report-Standard	Sun 27-Oct-2019	Sat 28-Mar-2020	UTC
	Airport-Season-Branch-Resource	From date	To date	Time
Peak Week Rep 1	DXB-W18-SOS Report-Standard	Mon 18-Mar-2019	Sun 24-Mar-2019	UTC
Peak Week Rep 2	DXB-W18-End-Standard	Mon 24-Dec-2018	Sun 30-Dec-2018	UTC
Peak Week Rep 3	DXB-W19-SOS Report-Standard	Mon 30-Dec-2019	Sun 05-Jan-2020	UTC