

Edinburgh Airport (EDI)

Winter 2019/20 (W19)



Start of Season Report

Report Date: Tue 01-Oct-2019

Headlines

	W19 Start	vs. W18 Start	vs. W18 End
Total Air Transport Movements (Passenger & Freight)	47,720	▲ 1.3%	▲ 3.1%
Total Passenger Air Transport Movements	45,675	▲ 1.6%	▲ 3.5%
Total Passenger Air Transport Movement Seats	6,377,162	▼ -0.4%	▲ 1.5%
Average Seats per Passenger Air Transport Movement	140	▼ -2.0%	▼ -2.0%
Percentage of allocated slots cleared as requested (OK)	98.28%		

Contents

Page	Content
2	Runway Scheduling Limits
3	Significant Route Changes
4	Full Season - ATM Analysis
5	Full Season - PATM Seats Analysis
6	Full Season - Terminal Analysis
7	Full Season - Aircraft Size Analysis
8	Full Season - Seasonality
9	Peak Week - Hourly Runway Allocation
10	Peak Week - Hourly Runway Allocation Comparison (W19 Start vs. W18 End)
11	Peak Week Histogram - Departure Passengers (T60/15) - All Terminals - All Operators
12	Peak Week Histogram - Departure Passengers (T60/15) - All Terminals - All Operators
13	Peak Week Histogram - Arrival Passengers (T60/15) - 1D - All Operators
14	Peak Week Histogram - Arrival Passengers (T60/15) - 1D - All Operators
15	Peak Week Histogram - Arrival Passengers (T60/15) - 1I - All Operators
16	Peak Week Histogram - Arrival Passengers (T60/15) - 1I - All Operators
17	Peak Week Histogram - Arrival Movements (R60/15) - All Terminals - All Operators
18	Peak Week Histogram - Arrival Movements (R60/15) - All Terminals - All Operators
19	Peak Week Histogram - Departure Movements (R60/15) - All Terminals - All Operators
20	Peak Week Histogram - Departure Movements (R60/15) - All Terminals - All Operators
21	Peak Week Histogram - Total Movements (R60/15) - All Terminals - All Operators
22	Peak Week Histogram - Total Movements (R60/15) - All Terminals - All Operators
23	Glossary

W18 scheduling season runs from Sun 28-Oct-2018 to Sat 30-Mar-2019 (154 days).

W19 scheduling season runs from Sun 27-Oct-2019 to Sat 28-Mar-2020 (154 days).

Disclaimer

No warranty whether expressed or implied as to the completeness, accuracy, fitness for purpose, or satisfactory quality is given by ACL regarding the information in this report, which is provided by third parties. Accordingly, ACL excludes all liability with regard to such data.

The contents of this report may not be reproduced without the written consent of ACL.

Significant Route Changes

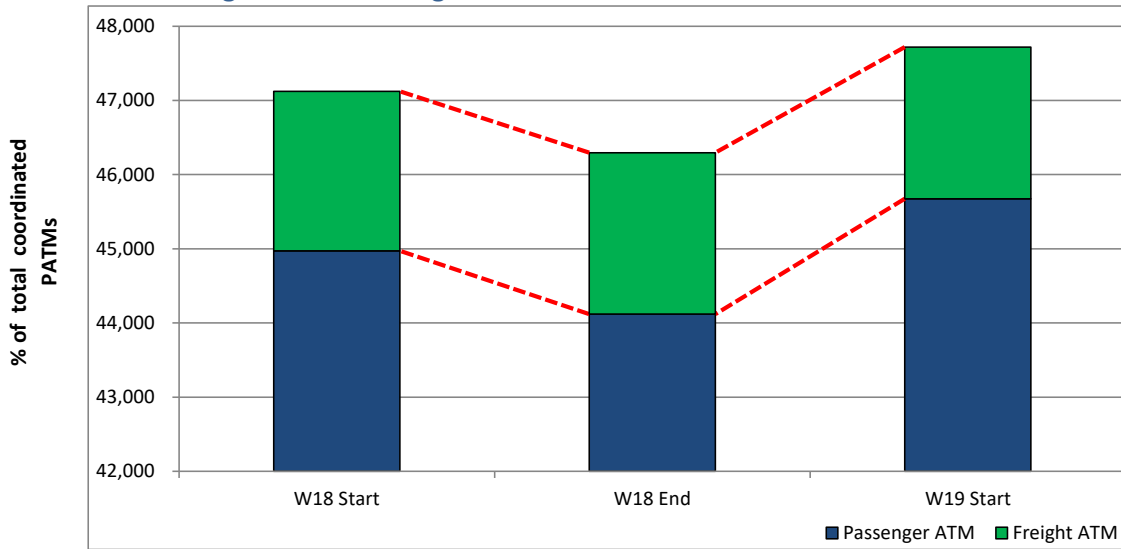


Operator	Category	Description of change from W18 schedule to W19 schedule
Air France	CHANGE	Decrease Pais Ch. De Gaulle service.
Delta Air Lines	CHANGE	Increase New York JFK service.
EasyJet	NEW	Jersey & Verona services.
EasyJet	CHANGE	Decrease Milan Malpensa & London Stansted services.
EasyJet	CHANGE	Increase Berlin service.
EasyJet	CANCELLED	Bilbao & Stuttgart services.
Emirates	CHANGE	Increase Dubai service.
Enter Air	NEW	Paris Ch. De Gaulle service.
Eurowings	CHANGE	Decrease Munich service.
Finnair	CHANGE	Increase Helsinki service.
Flybe	CHANGE	Decrease Birmigham & Southampton services.
Flybe	CHANGE	Increase Cardiff & London Heathrow services.
Flybe	CANCELLED	East Midlands service.
Hainan Airlines	CANCELLED	Beijing service.
Jet2.com	CHANGE	Increase Lanzarote & Tenerife services.
Lauda Motion	NEW	Vienna service.
Loganair	NEW	Bergen & Stavanger services.
Loganair	CHANGE	Decrease Inverness & Shetland Islands service.
Loganair	CHANGE	Increase East Midlands, Norwich & Isle of Man services.
Lufthansa	CHANGE	Increase Munich service.
Norwegian	CHANGE	Decrease Copenhagen & Stockholm services.
Norwegian	CANCELLED	Newburgh Stewart service.
Ryanair	NEW	Kaunas, Bucharest, Palma Mallorca & Luxembourg services.
Ryanair	CHANGE	Decrease Valencia, Las Palmas, Porto, Venice & Eindhoven services.
Ryanair	CHANGE	Increase Milan Orio Al Serio, Riga, Budapest, Prague, Modlin, Brussels & Gdansk servi
Ryanair	CANCELLED	Memmingen, London Stansted & Stockholm services.
Titan Airways	CHANGE	Increase Liege service.
Titan Airways	CANCELLED	Paris Ch. De Gaulle service.
Turkish Airlines	CHANGE	Increase Isanbul service.
Wizz Air	NEW	Budapest, Gdansk, Bucharest & Warsaw services.
WOW Air	CANCELLED	Keflavik service.

Full Season - ATM Analysis

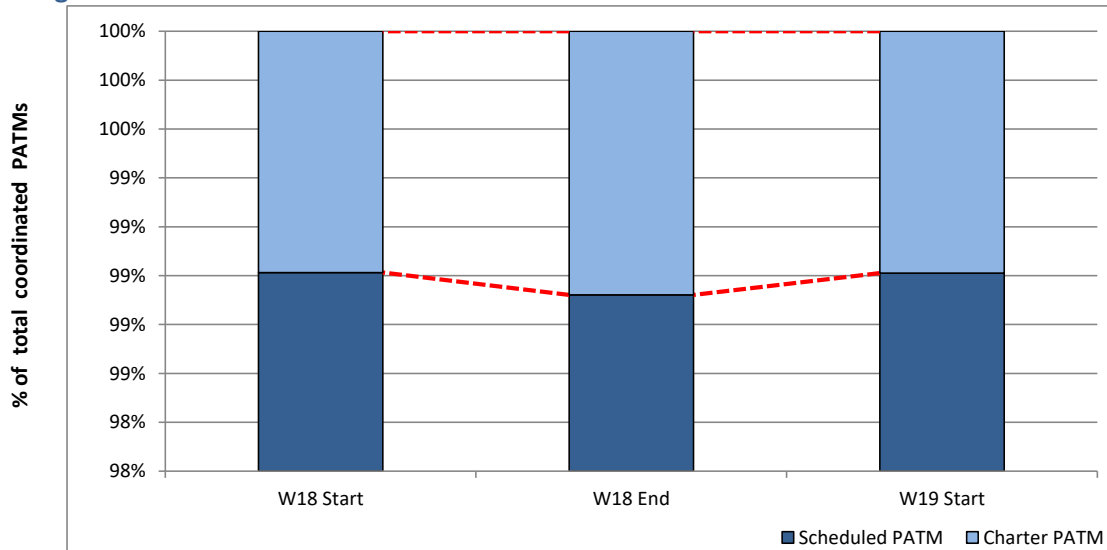


Total ATMs: Passenger ATMs vs. Freight ATMs



Schedule Snapshot

Passenger ATMs: Scheduled vs. Charter

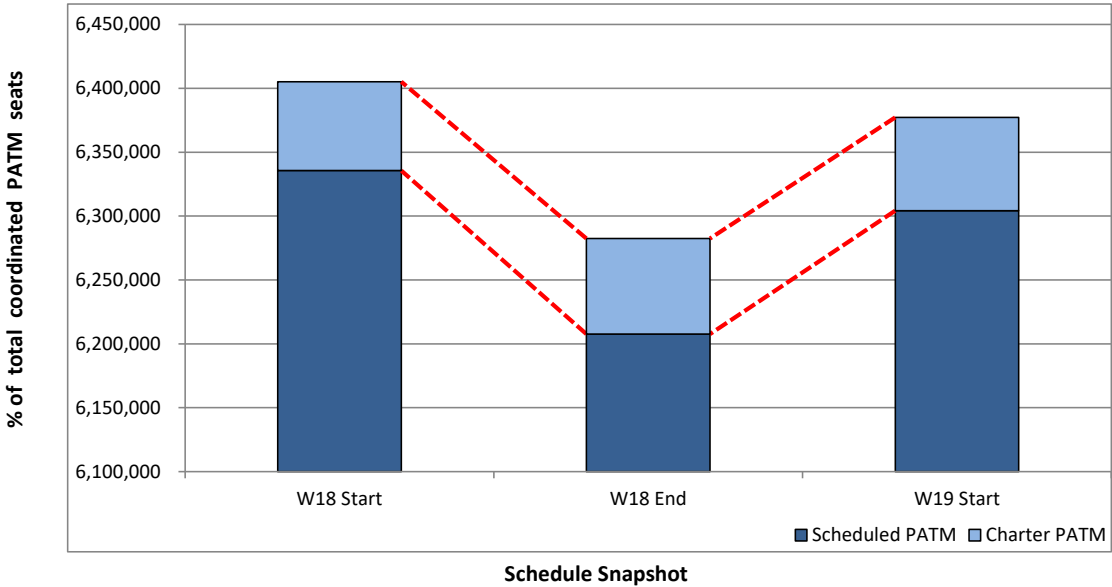


Schedule Snapshot

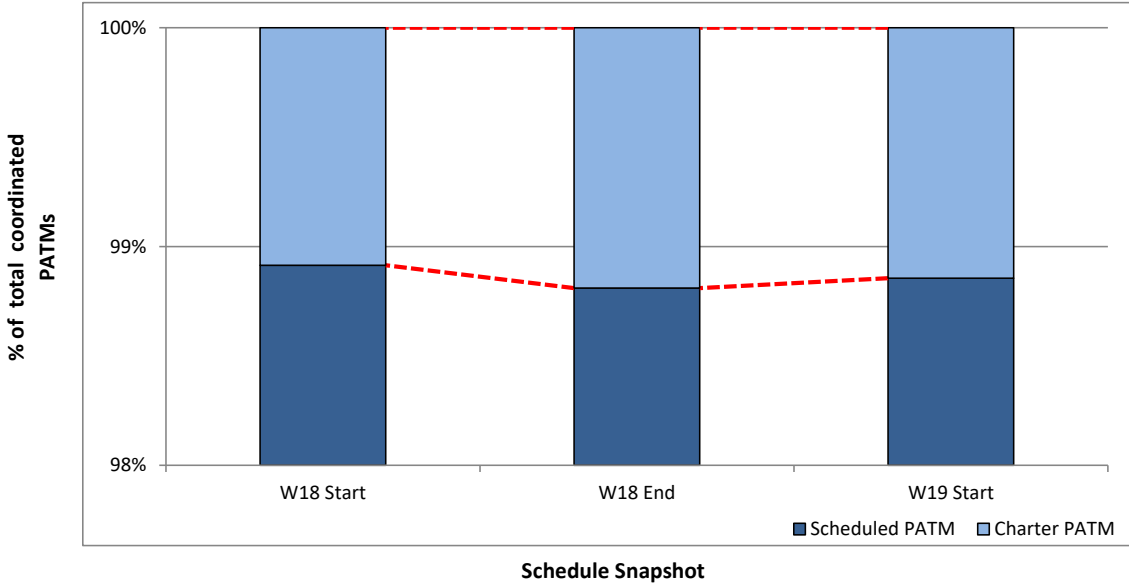
Full Season - PATM Seats Analysis



Total Passenger ATM seats: Scheduled vs. Charter



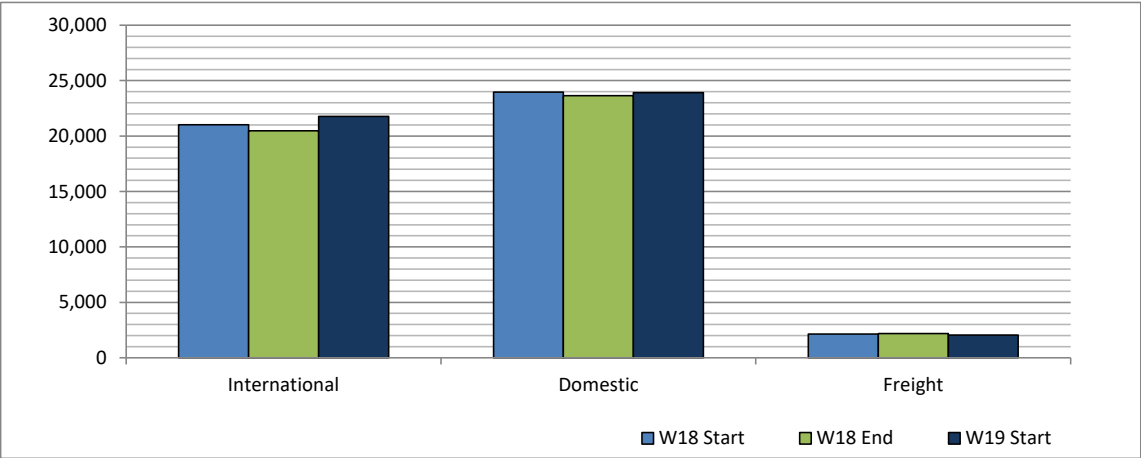
Passenger ATM seats: Scheduled vs. Charter



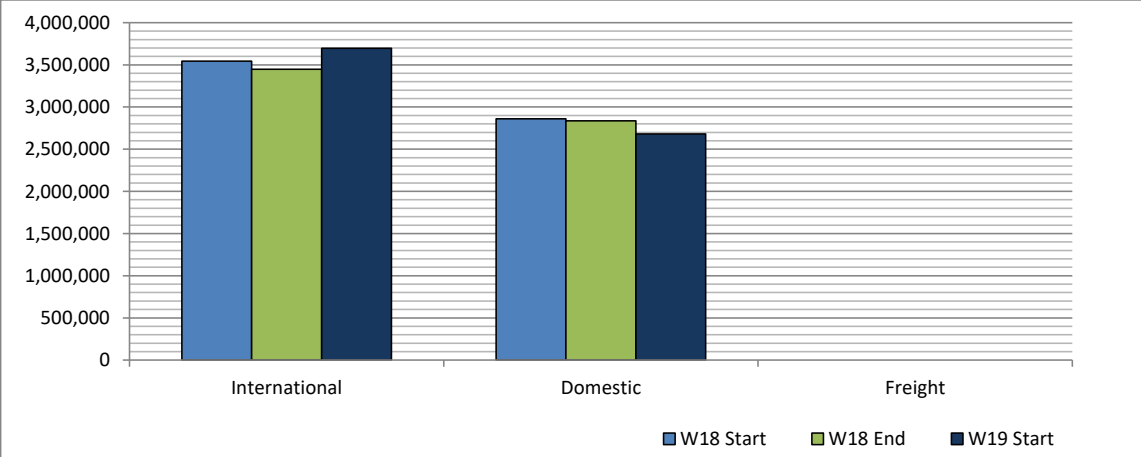
Full Season - Terminal Analysis



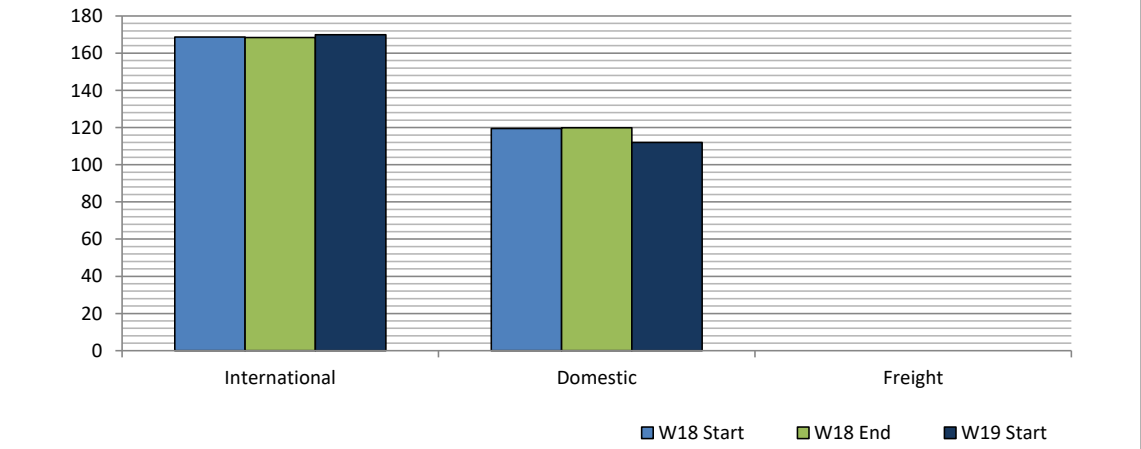
Air Transport Movements (total allocated for season)



Air Transport Movement Seats (total allocated for season)



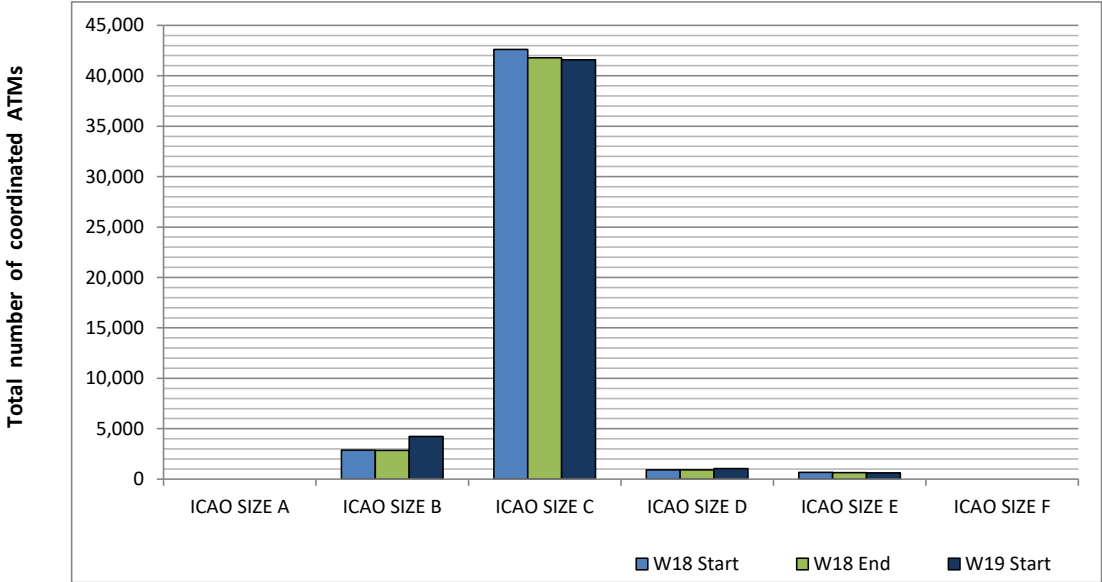
Seats per Air Transport Movement (average for season)



Full Season - Aircraft Size Analysis

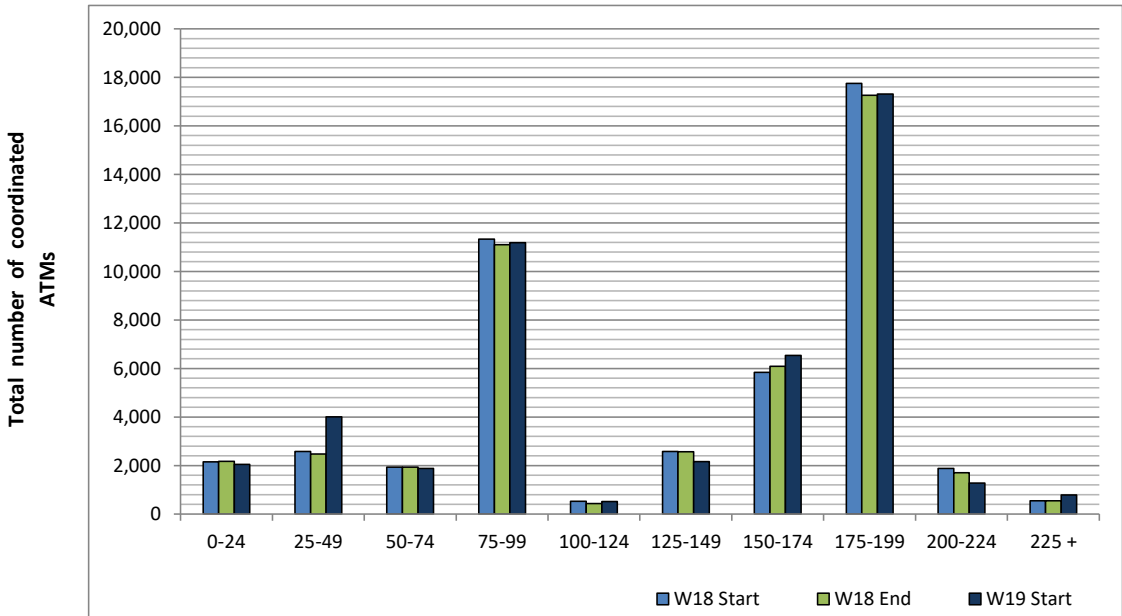


ICAO size designation



Note: See Glossary for definitions of ICAO SIZE groupings

Air Transport Movement seat distribution

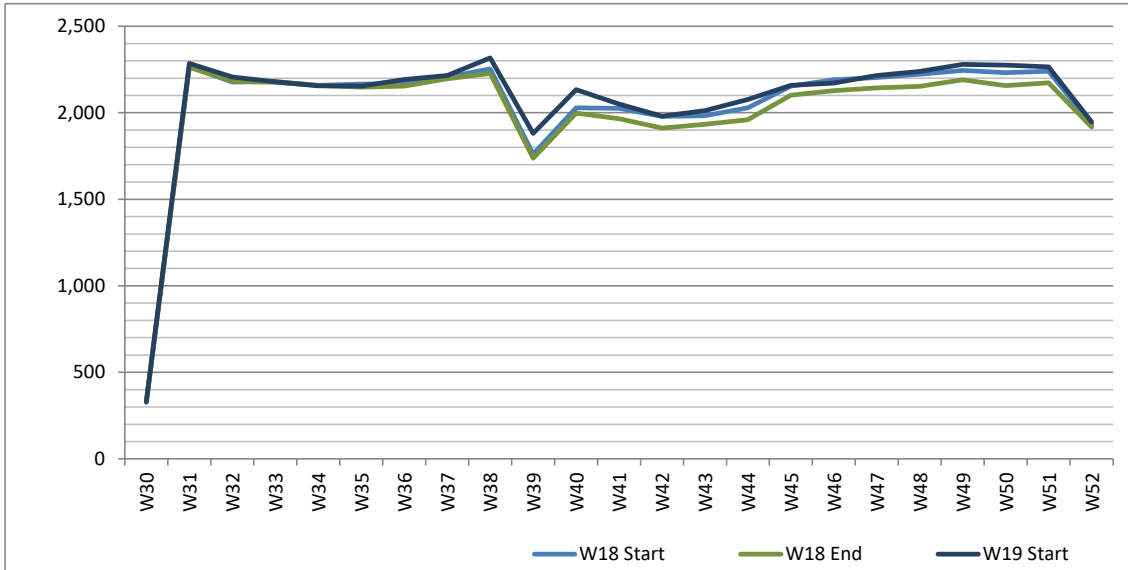


Note: FREIGHT-ONLY services with 0 seats are included in the first seat band '0-24'

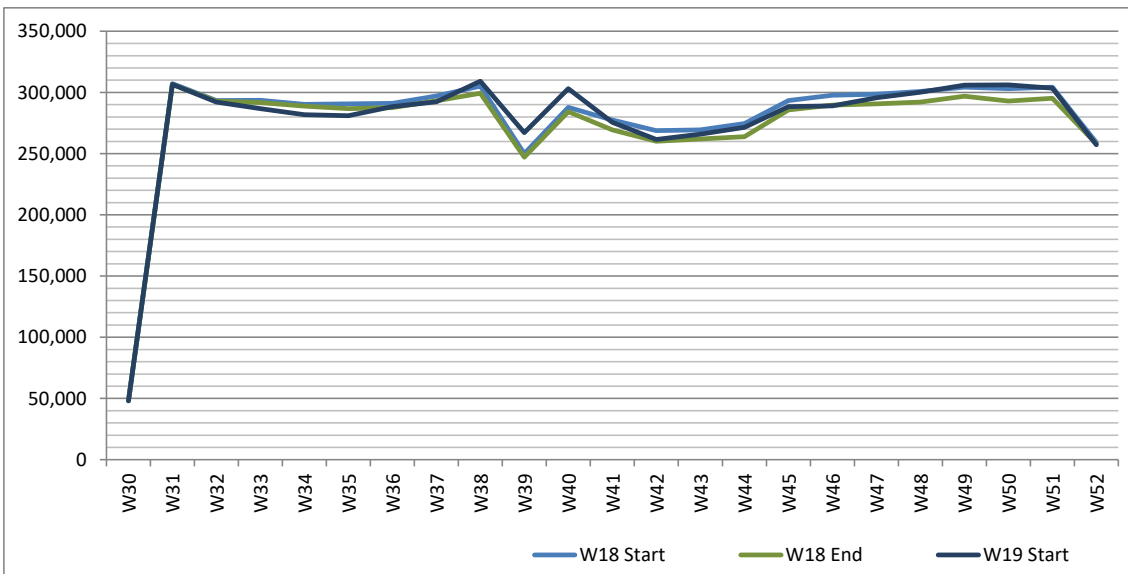
Full Season - Seasonality



Air Transport Movements by week of season



Air Transport Movement Seats by week of season



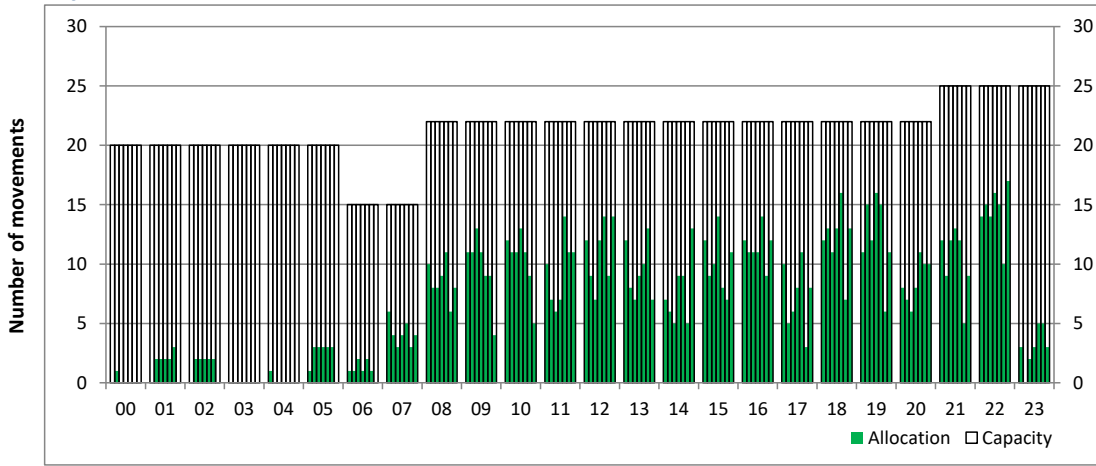
Peak Week - Hourly Runway Allocation

Schedule: W19 Start



Hourly Arrival Allocation

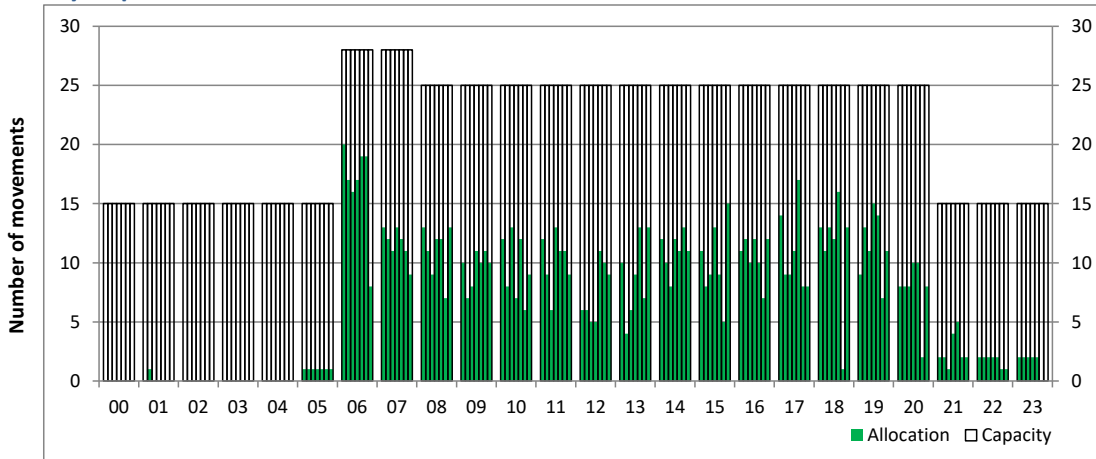
Time: UTC



Hour of day (24 hour format)

Hourly Departure Allocation

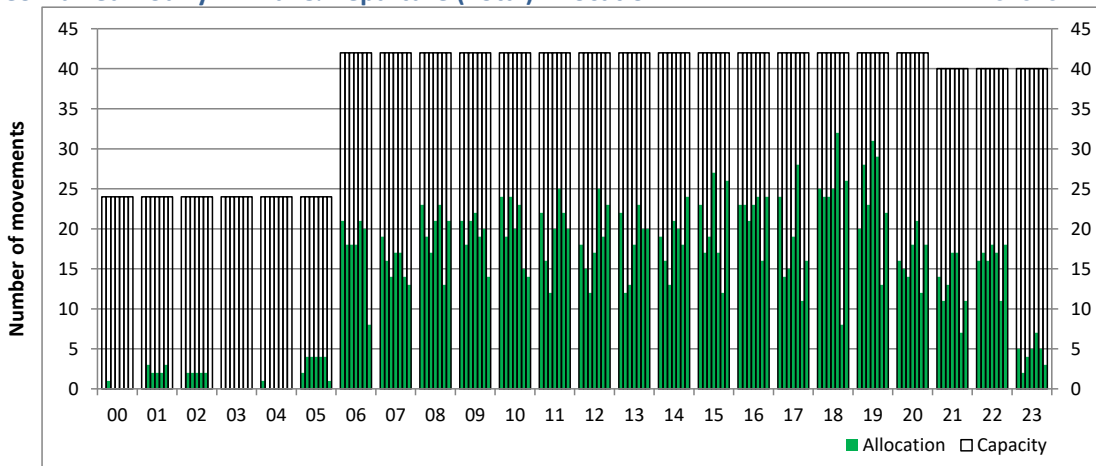
Time: UTC



Hour of day (24 hour format)

Combined Hourly Arrival & Departure (Total) Allocation

Time: UTC



Hour of day (24 hour format)

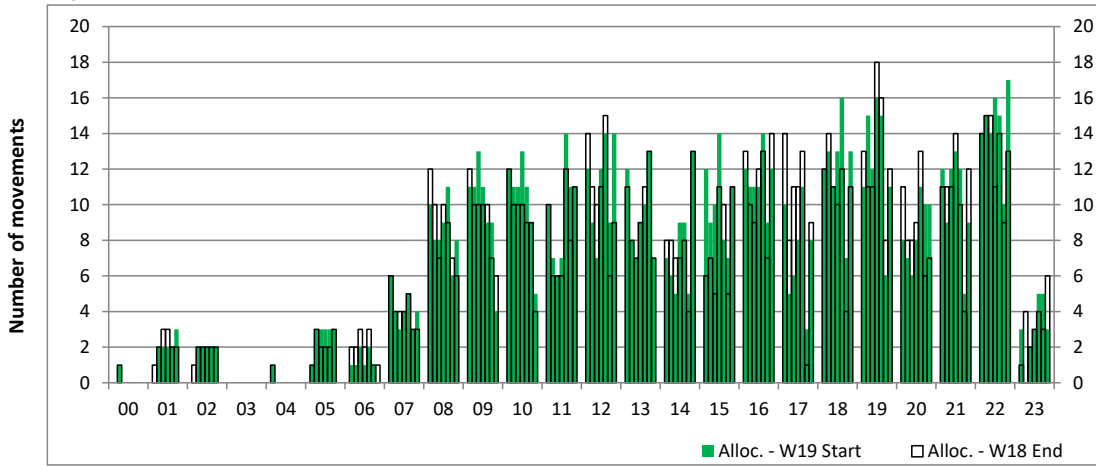
Peak Week - Runway Allocation Comparison

Comparison of W19 Start vs. W18 End



Hourly Arrival Allocation

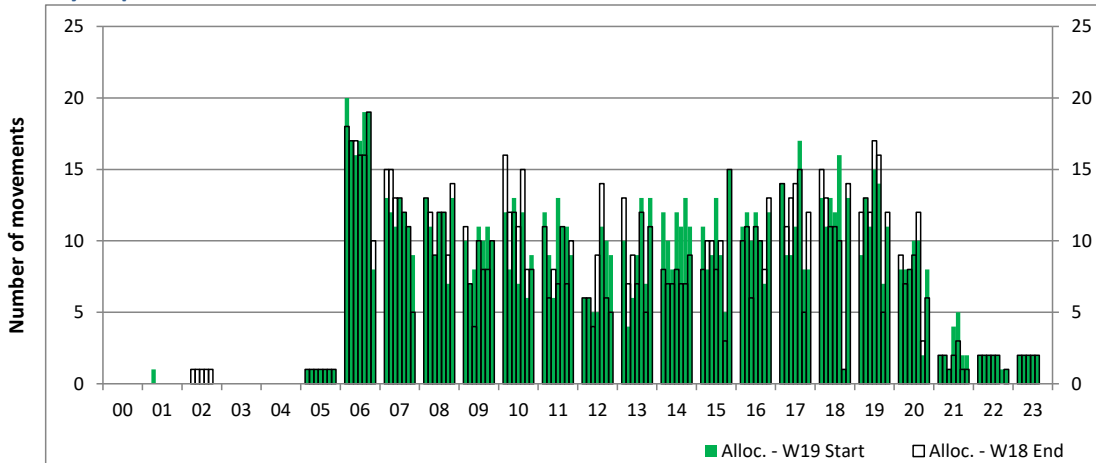
Time: UTC



Hour of day (24 hour format)

Hourly Departure Allocation

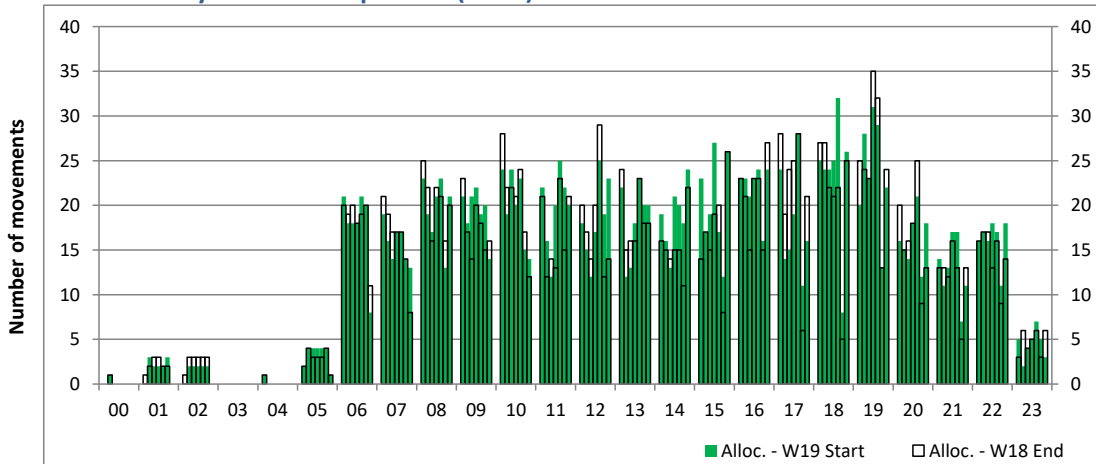
Time: UTC



Hour of day (24 hour format)

Combined Hourly Arrival & Departure (Total) Allocation

Time: UTC



Hour of day (24 hour format)

Peak Week - Passengers Histogram

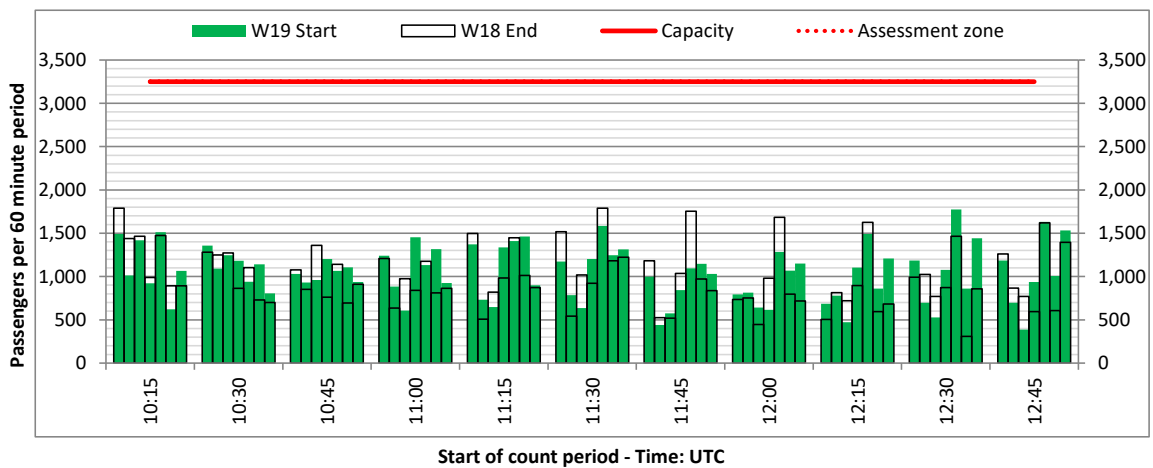
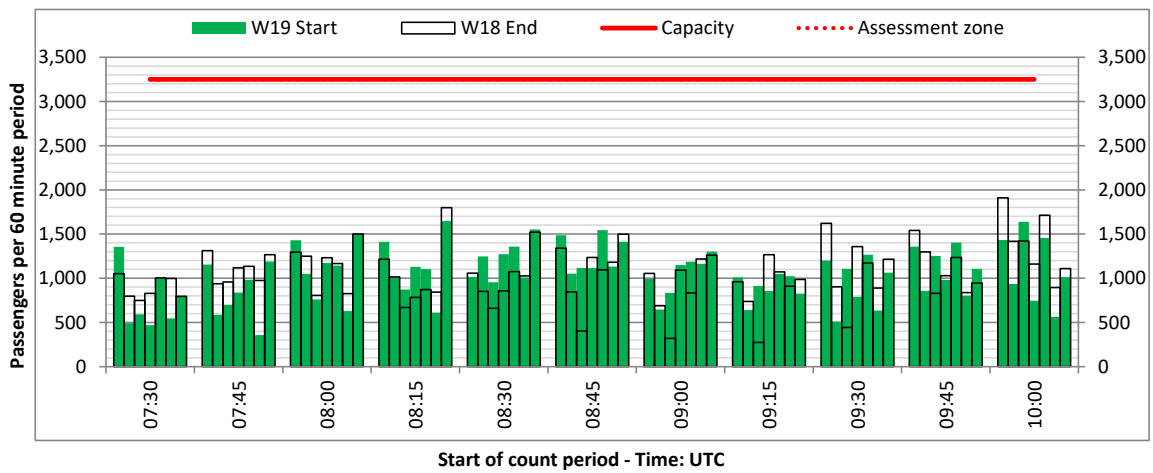
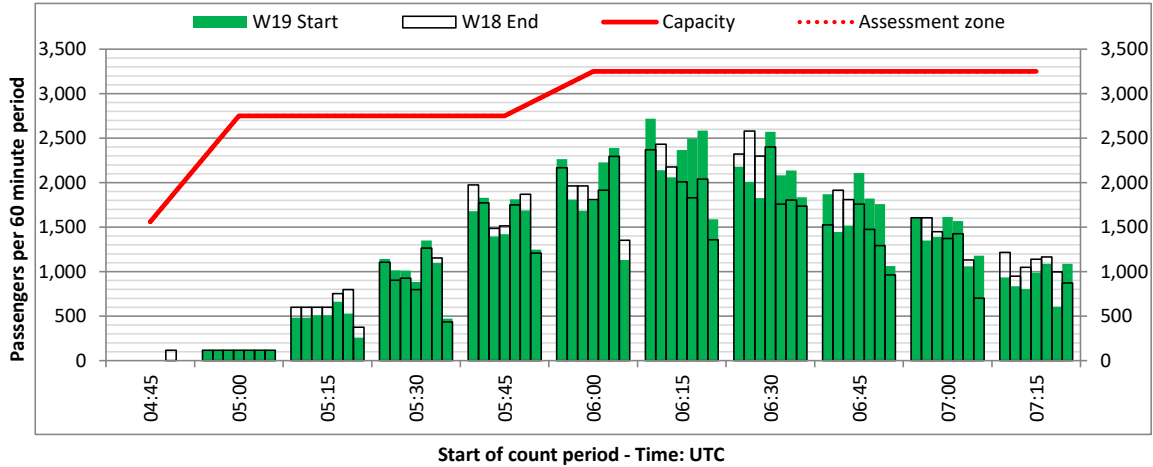
DEPARTURE - 60 minute count rolling every 15 mins (T60/15)



Terminals: All Terminals

Operators: All Operators

Days: 1234567



Peak Week - Passengers Histogram

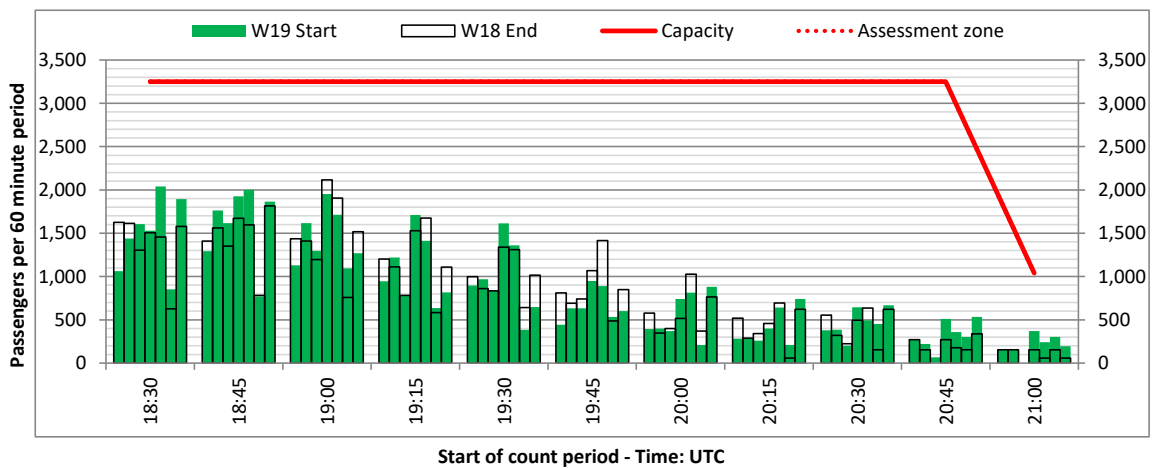
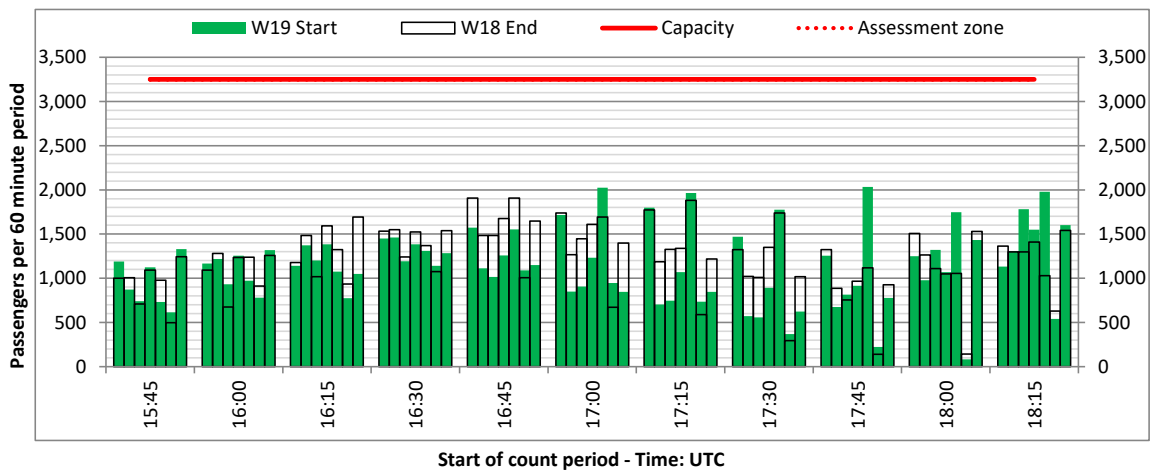
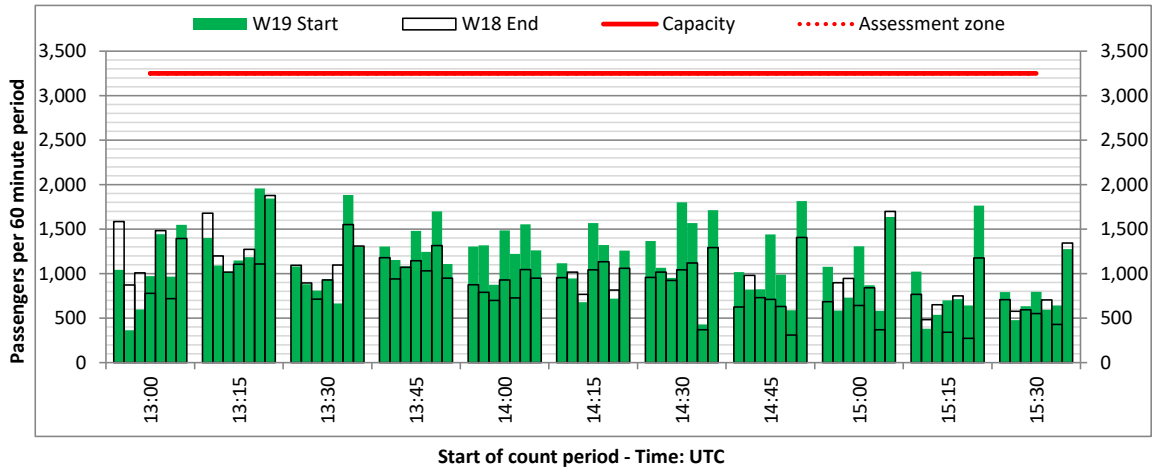
DEPARTURE - 60 minute count rolling every 15 mins (T60/15)



Terminals: All Terminals

Operators: All Operators

Days: 1234567



Peak Week - Passengers Histogram

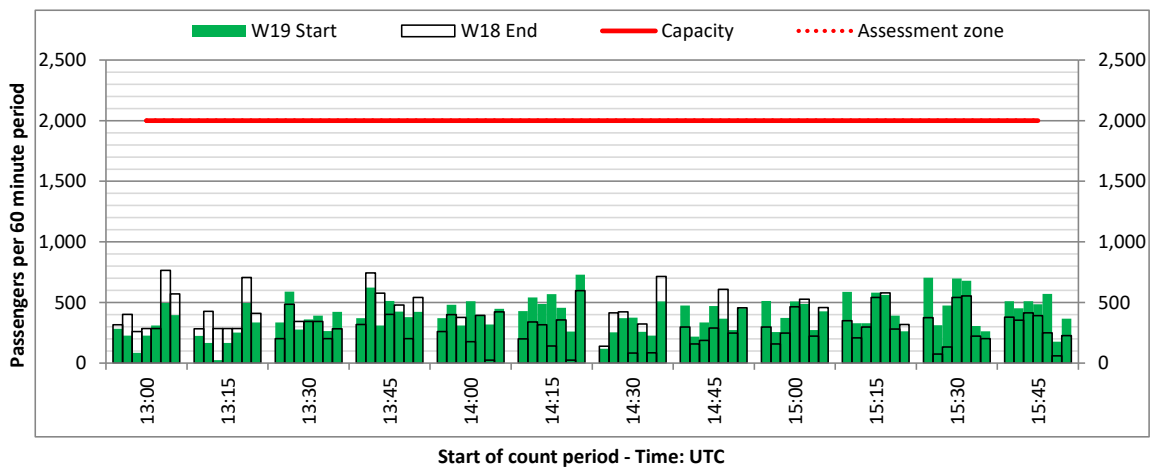
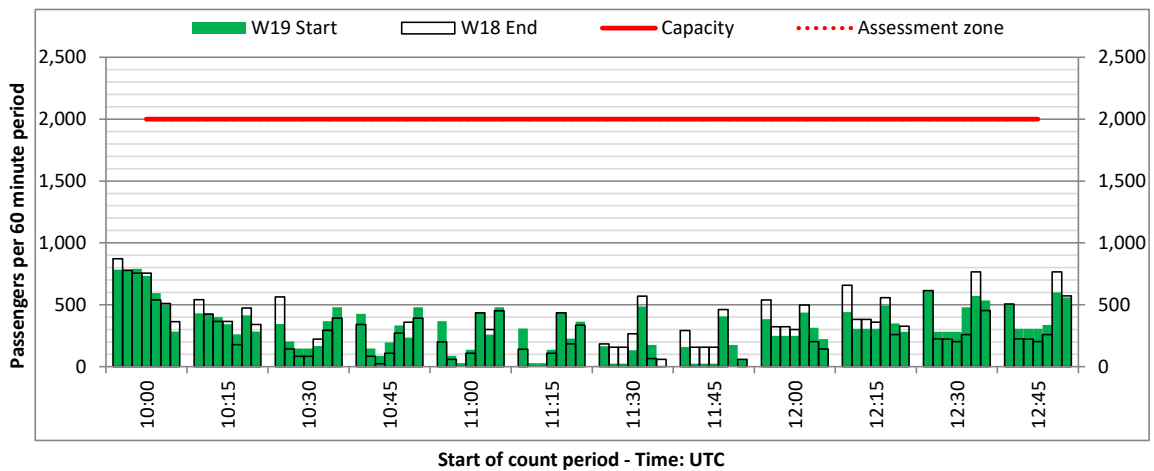
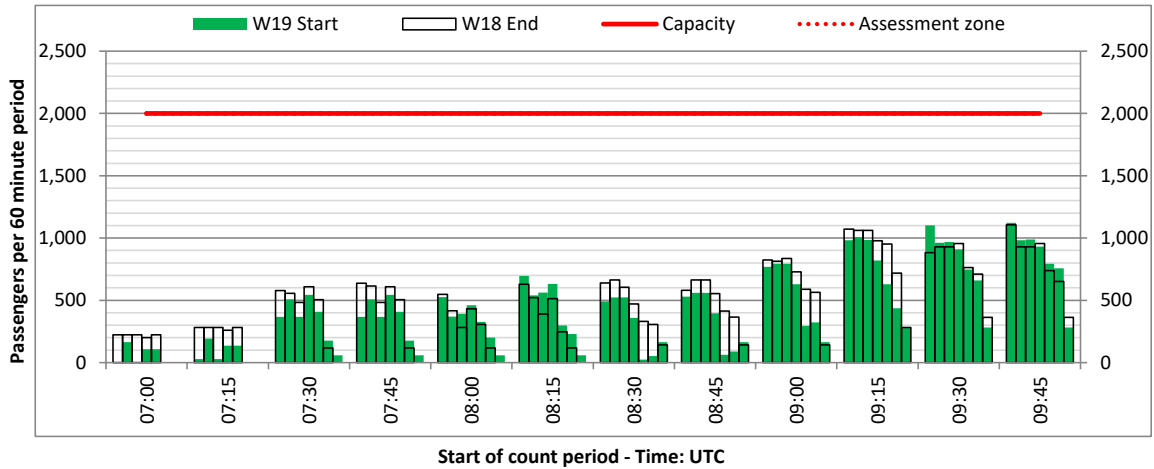
ARRIVAL - 60 minute count rolling every 15 mins (T60/15)



Terminals: 1D

Operators: All Operators

Days: 1234567



Peak Week - Passengers Histogram

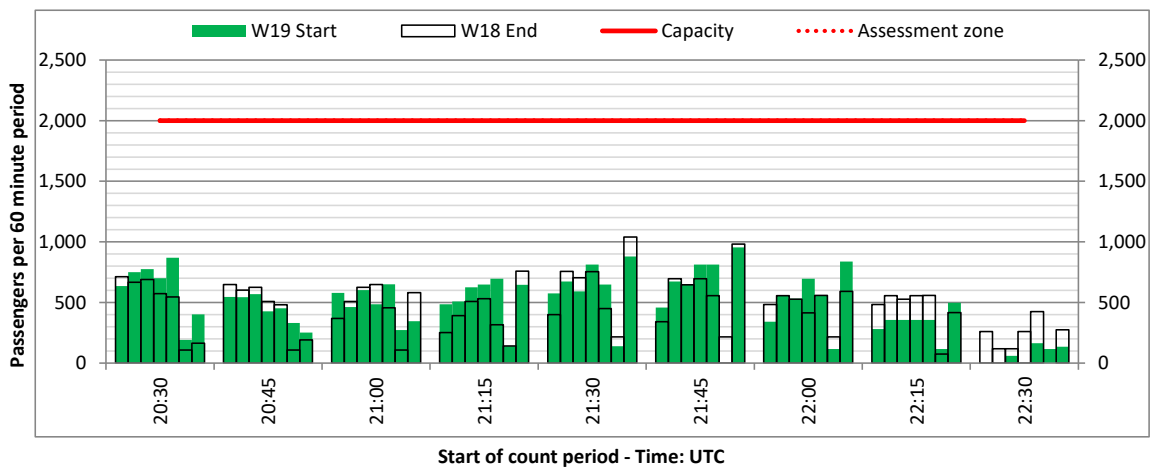
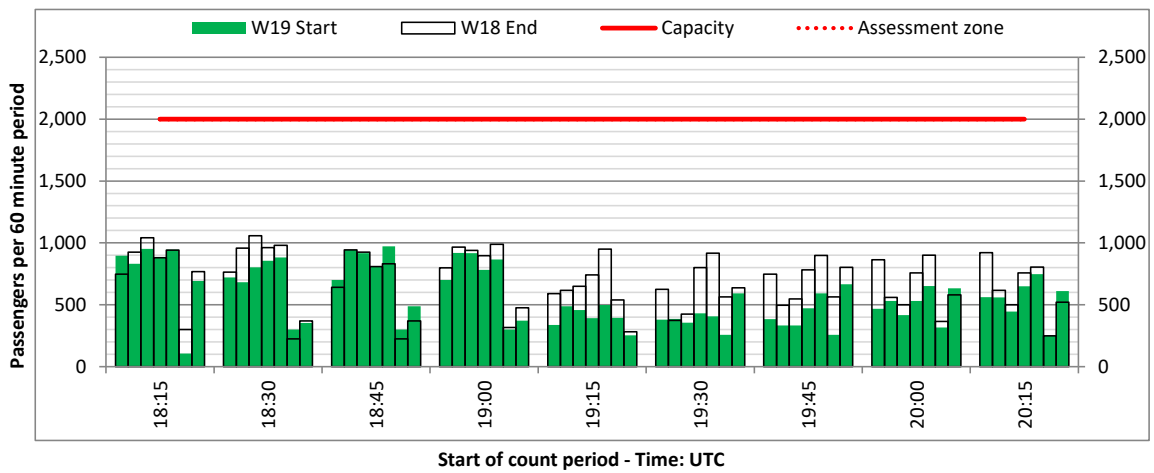
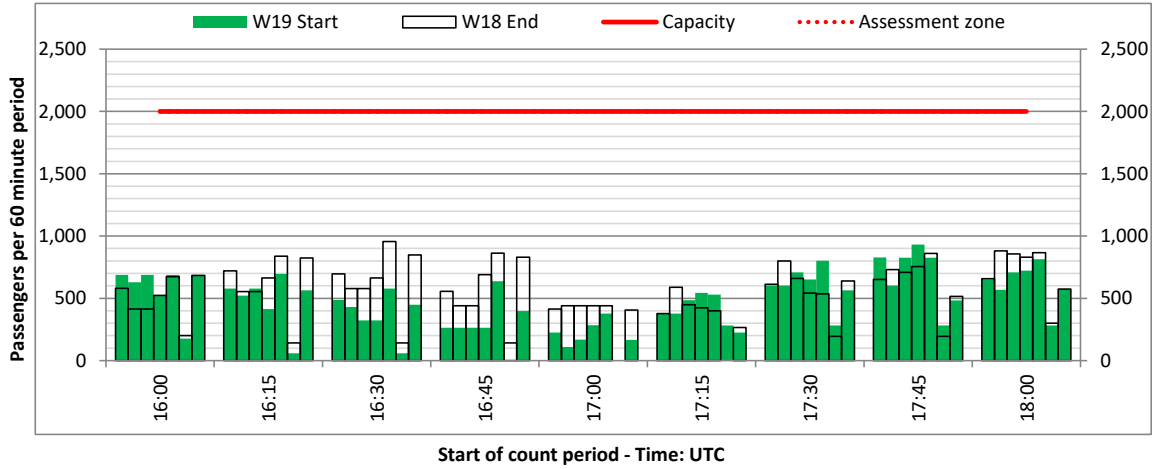
ARRIVAL - 60 minute count rolling every 15 mins (T60/15)



Terminals: 1D

Operators: All Operators

Days: 1234567



Peak Week - Passengers Histogram

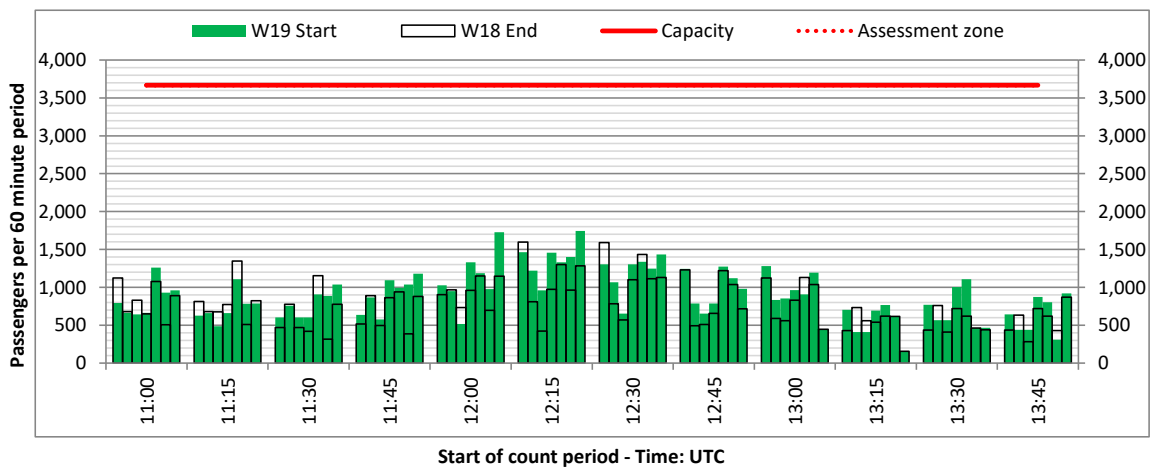
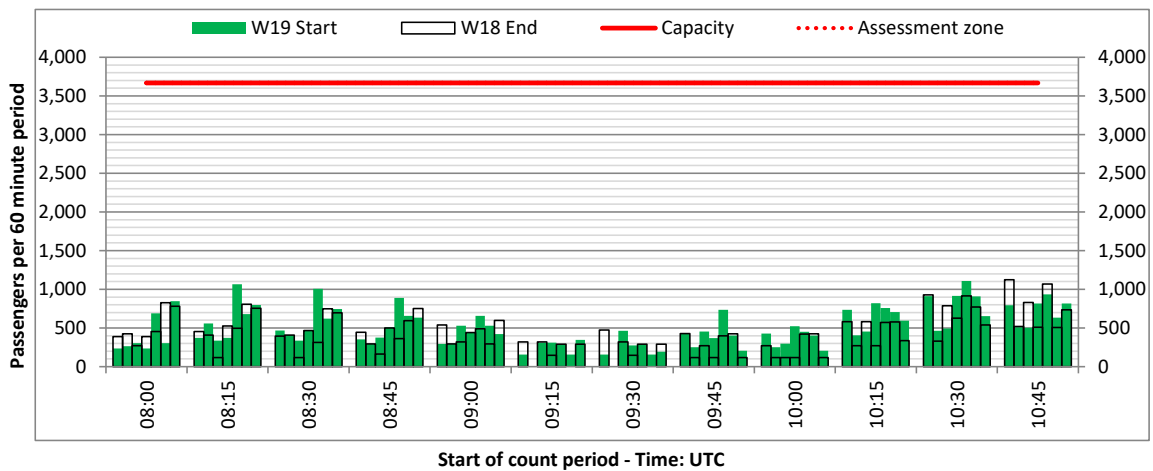
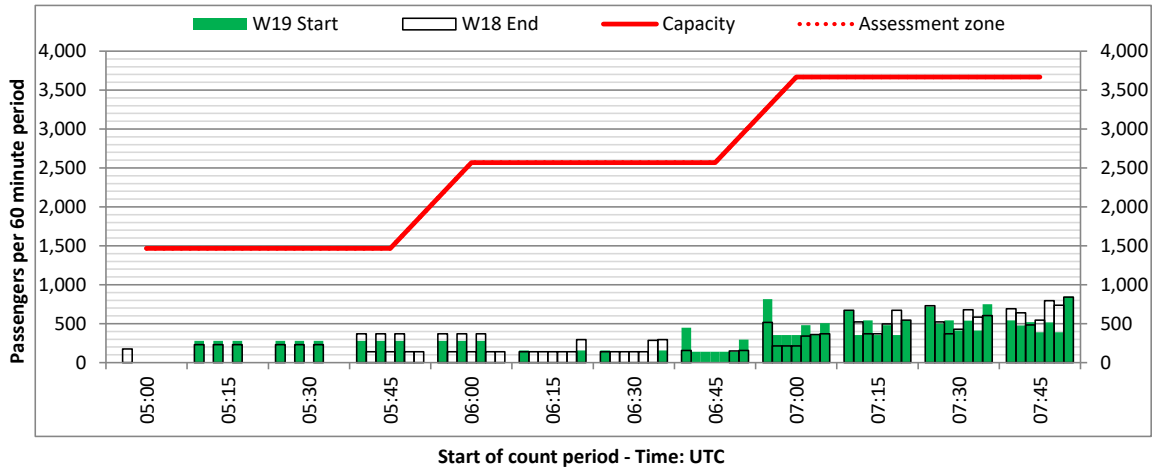
ARRIVAL - 60 minute count rolling every 15 mins (T60/15)



Terminals: 1I

Operators: All Operators

Days: 1234567



Peak Week - Passengers Histogram

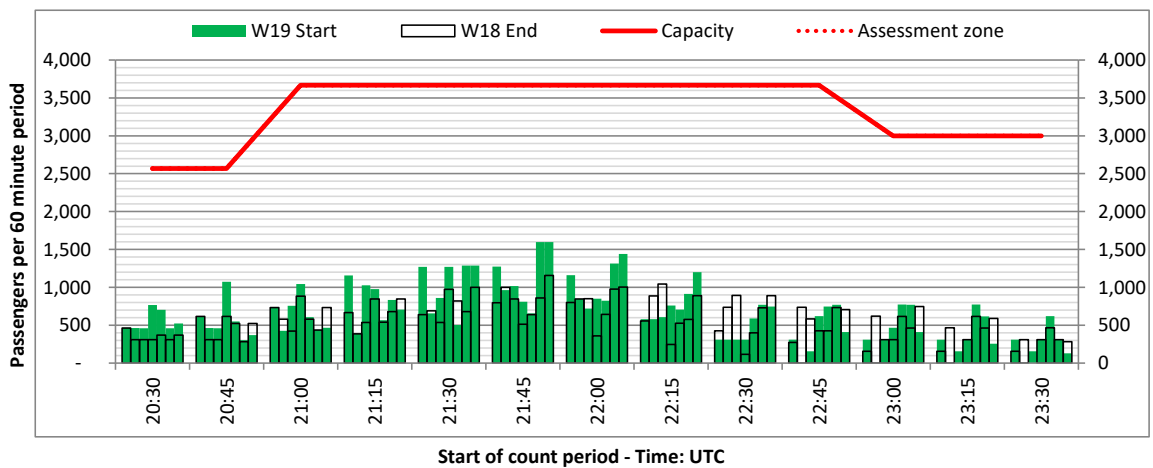
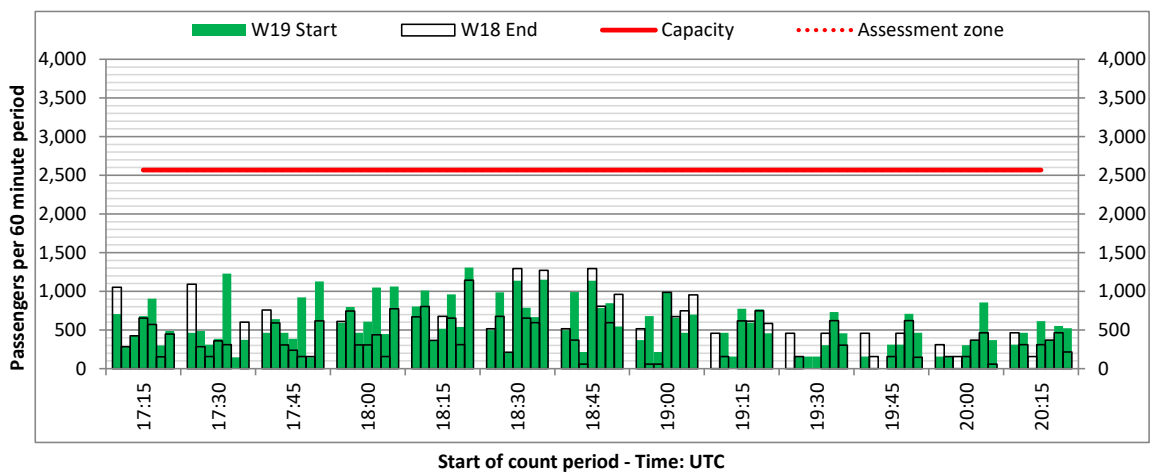
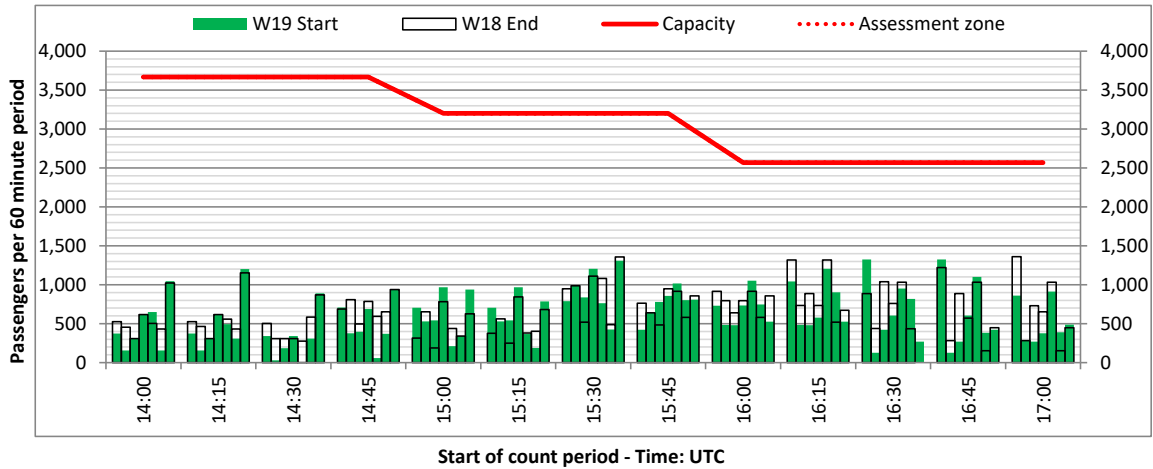
ARRIVAL - 60 minute count rolling every 15 mins (T60/15)



Terminals: 1I

Operators: All Operators

Days: 1234567



Peak Week - Movements Histogram

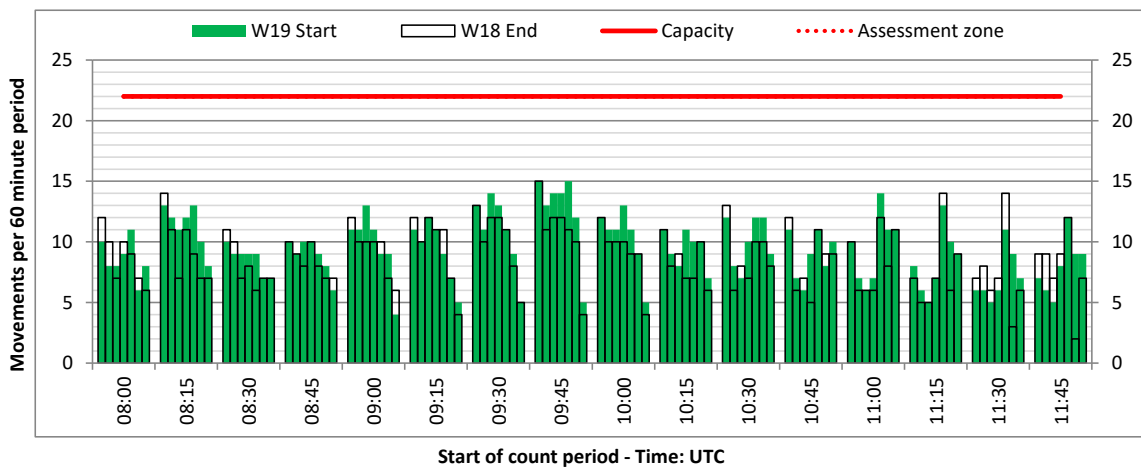
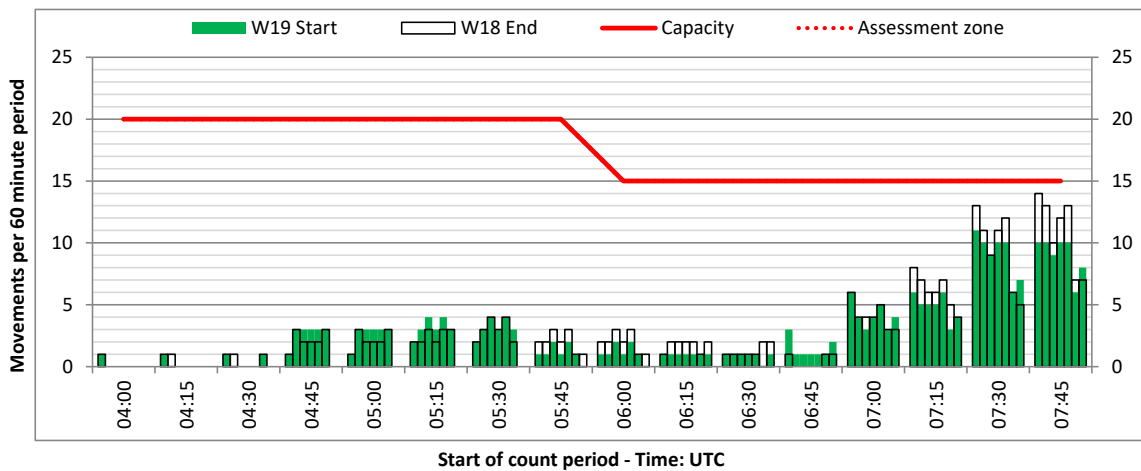
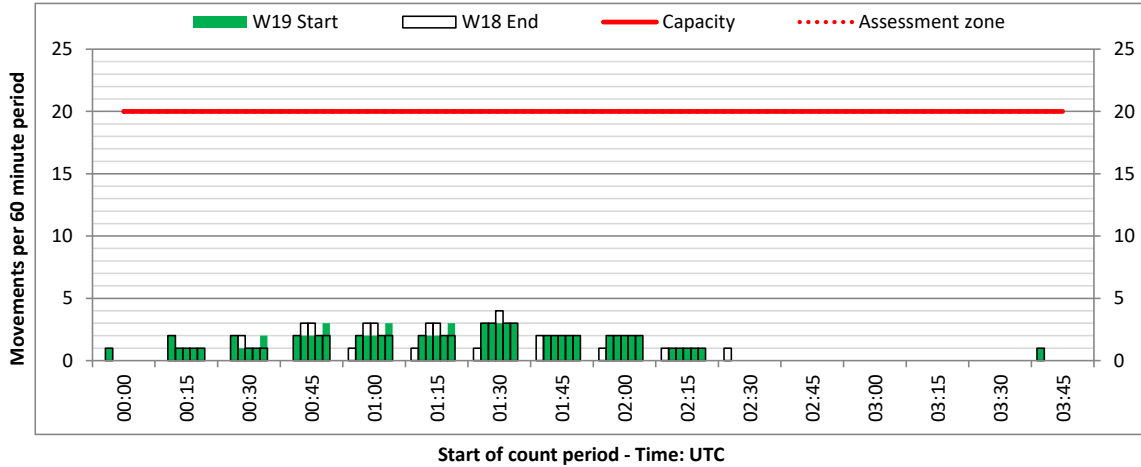
ARRIVAL - 60 minute count rolling every 15 mins (R60/15)



Terminals: All Terminals

Operators: All Operators

Days: 1234567



Peak Week - Movements Histogram

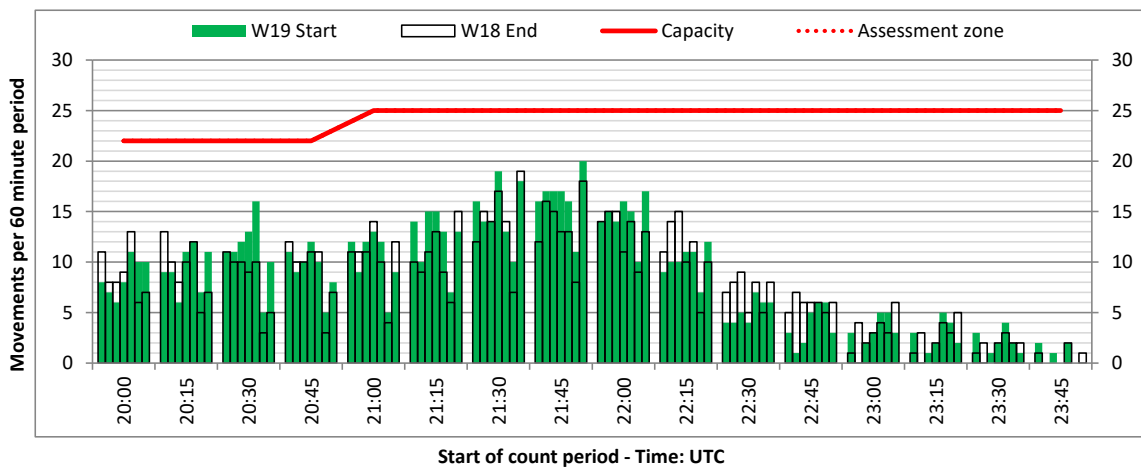
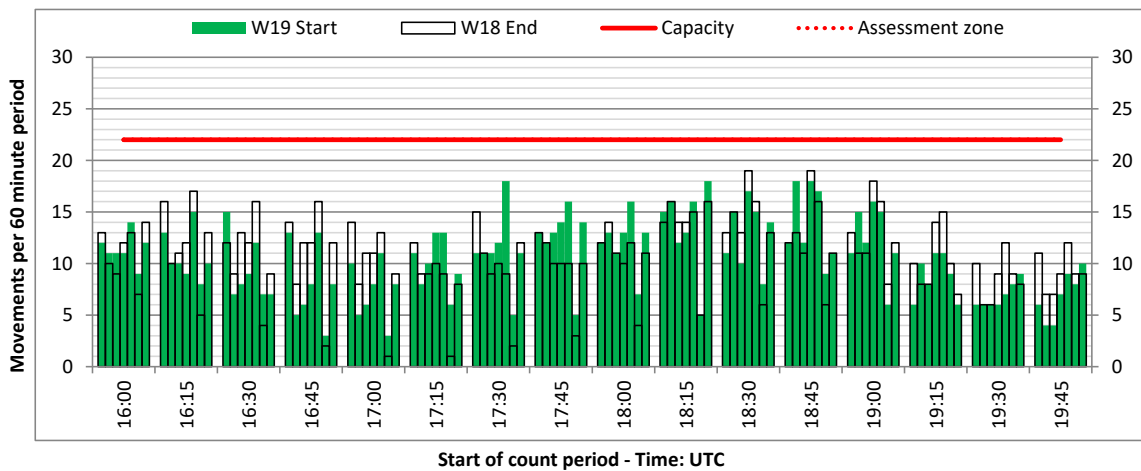
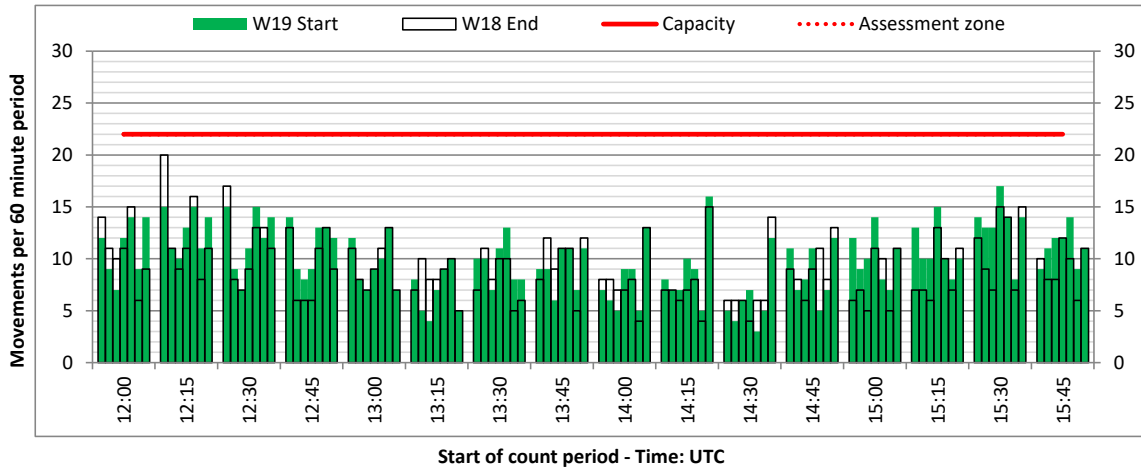
ARRIVAL - 60 minute count rolling every 15 mins (R60/15)



Terminals: All Terminals

Operators: All Operators

Days: 1234567



Peak Week - Movements Histogram

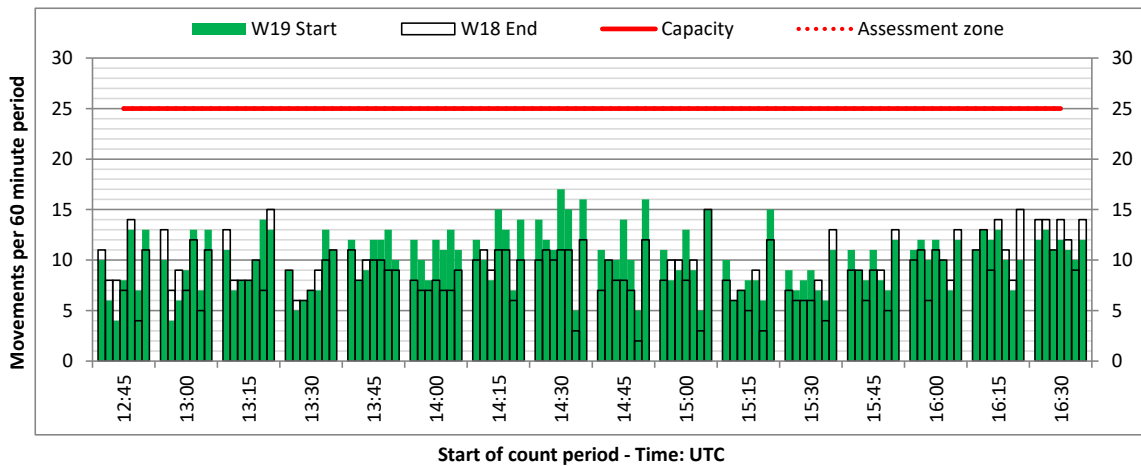
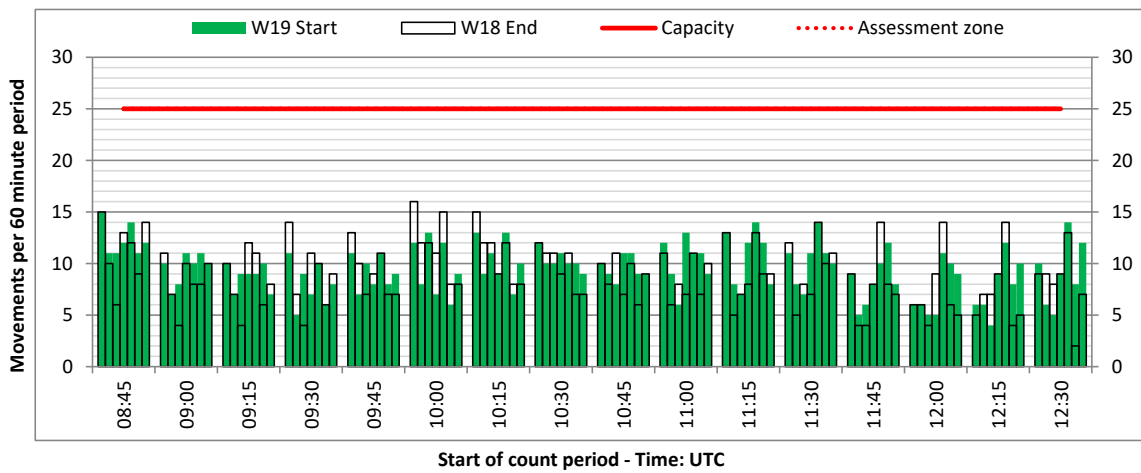
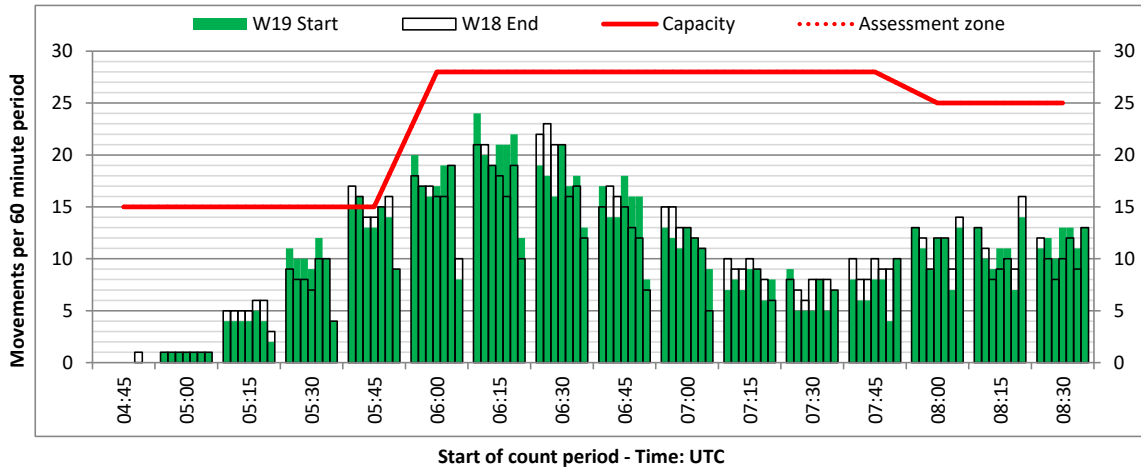
DEPARTURE - 60 minute count rolling every 15 mins (R60/15)



Terminals: All Terminals

Operators: All Operators

Days: 1234567



Peak Week - Movements Histogram

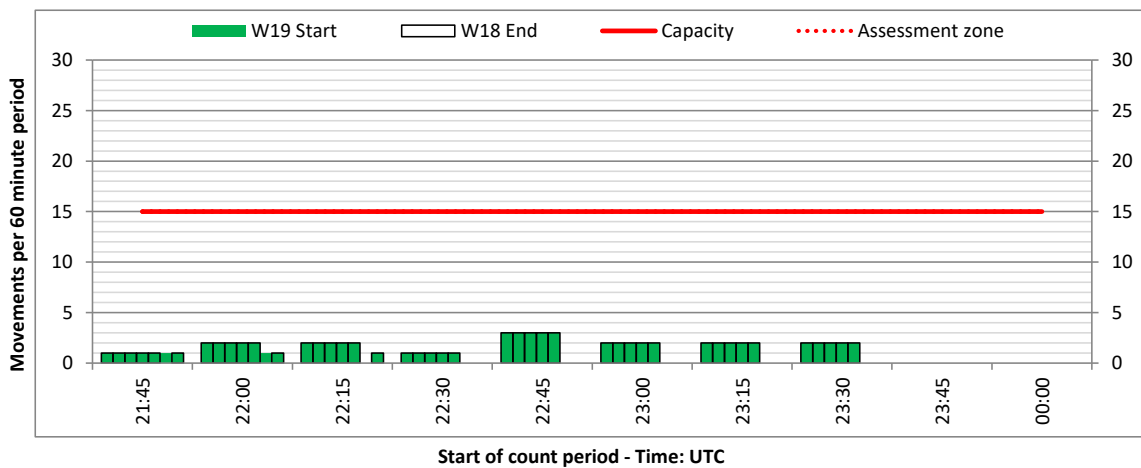
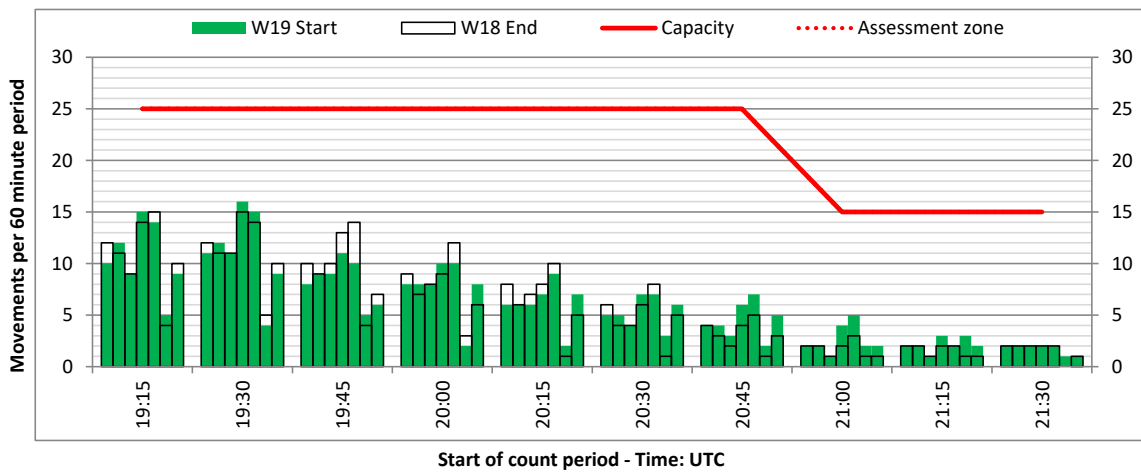
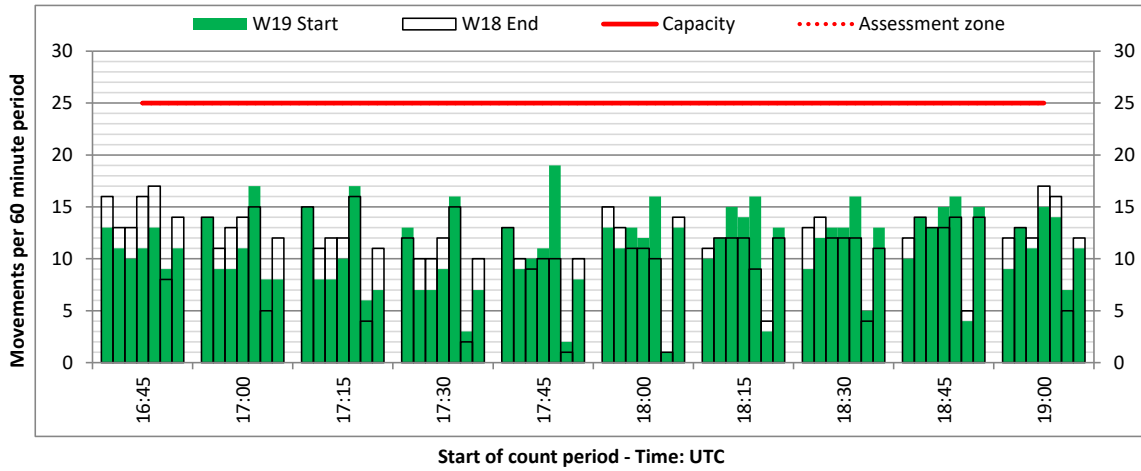
DEPARTURE - 60 minute count rolling every 15 mins (R60/15)



Terminals: All Terminals

Operators: All Operators

Days: 1234567



Peak Week - Movements Histogram

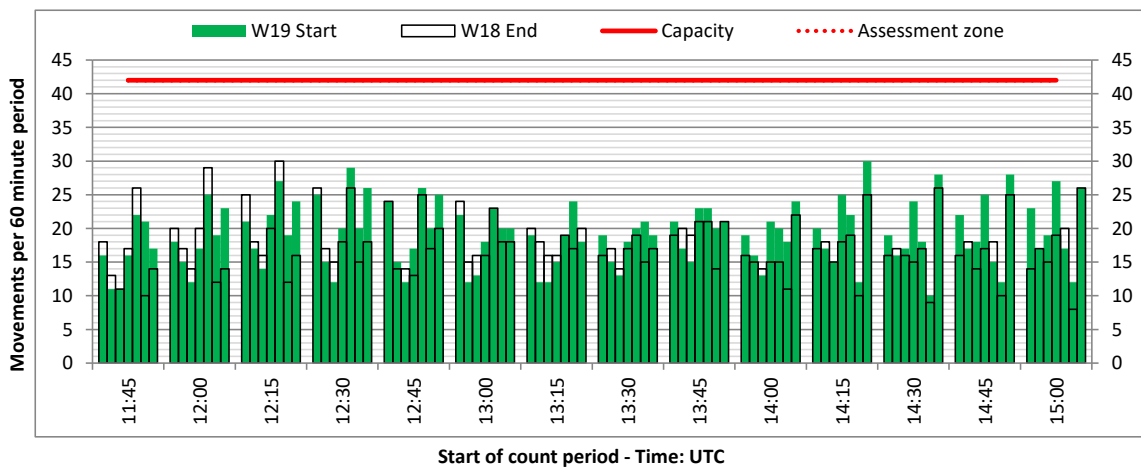
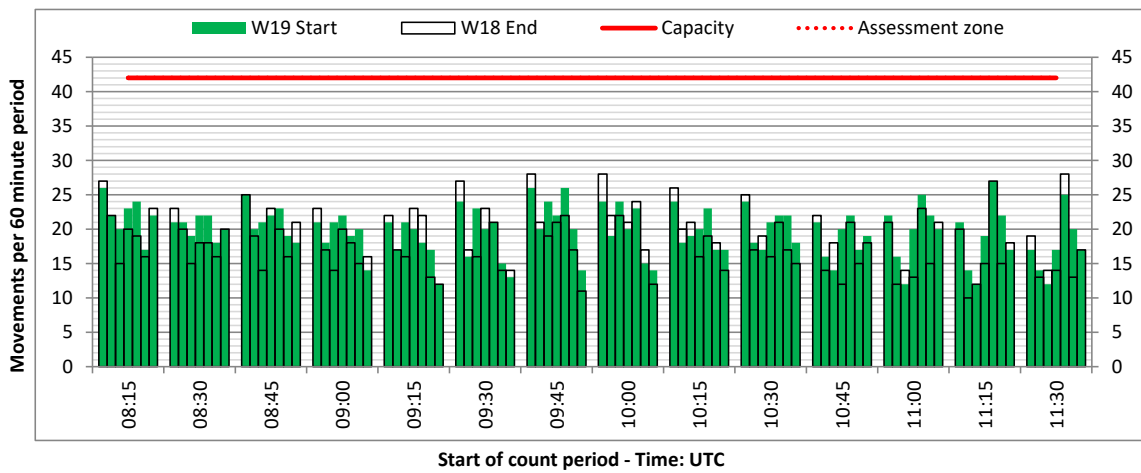
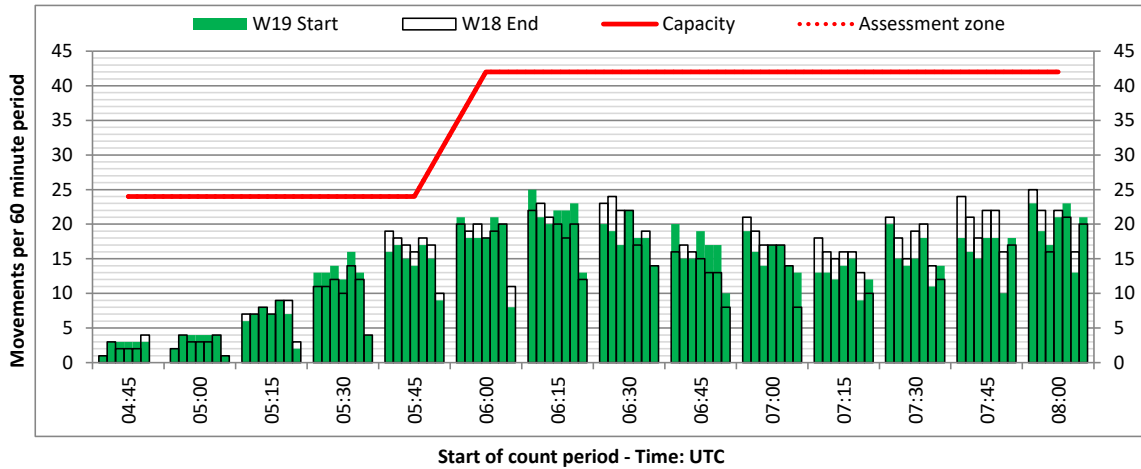
TOTALS - 60 minute count rolling every 15 mins (R60/15)



Terminals: All Terminals

Operators: All Operators

Days: 1234567



Peak Week - Movements Histogram

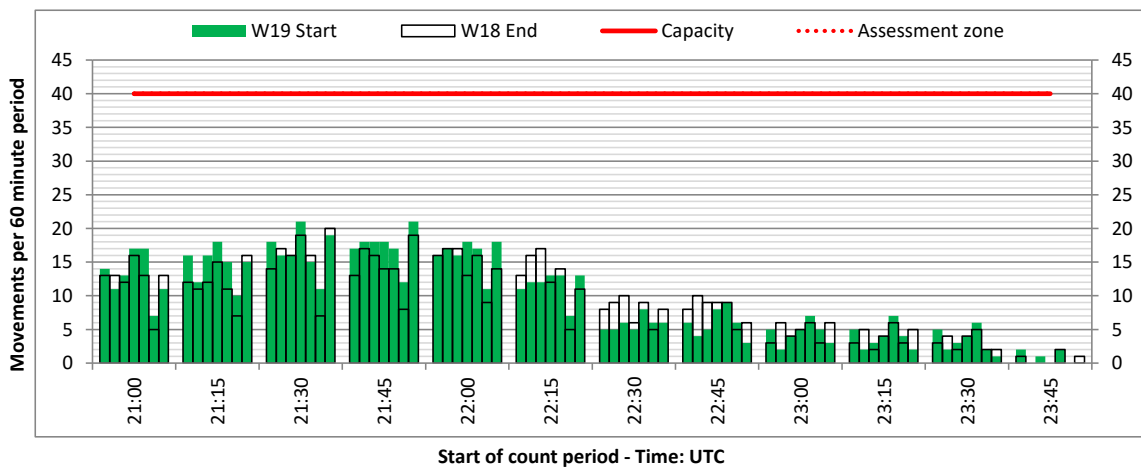
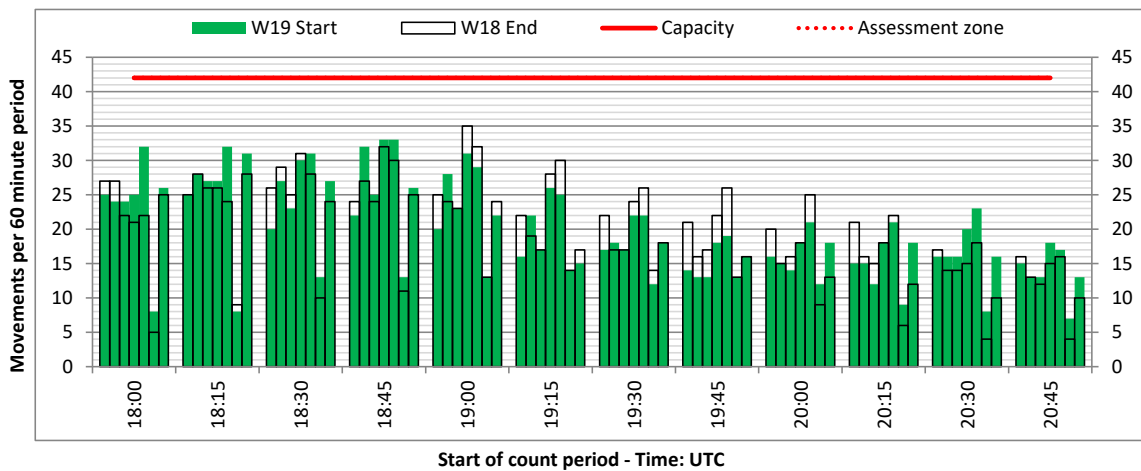
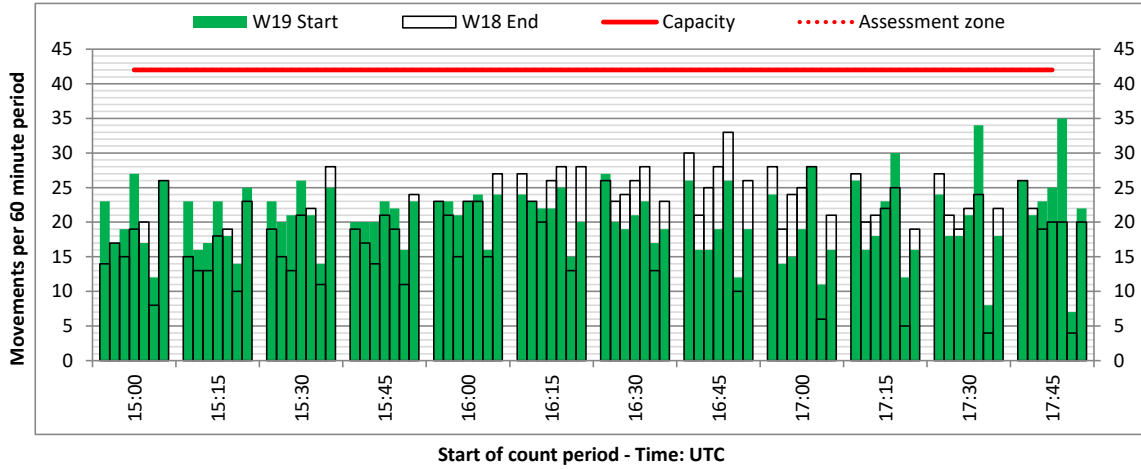
TOTALS - 60 minute count rolling every 15 mins (R60/15)



Terminals: All Terminals

Operators: All Operators

Days: 1234567



Glossary



Air Transport Movement (ATM)	Any aircraft movement which is either a scheduled or chartered passenger or cargo flight.
Common Travel Area (CTA)	Origin or Destination is in Republic of Ireland or the Channel Islands.
Demand	Unconstrained demand before any schedule adjustments have been made.
"Fill-in"	These are gaps in a historic series of slots which the carrier requests to "Fill-in" at Initial Submissions - Fill-ins will be recognisably part of the historic series and will have the same flight details to qualify as a "Fill-in".
Hist (SHL)	Snapshot of historic schedule rolled over from end of the previous equivalent season - as advised to airlines in the SHLs.
ICAO Size A	Aircraft with wingspan between 0.00m - 14.99m.
ICAO Size B	Aircraft with wingspan between 15.00m - 23.99m.
ICAO Size C	Aircraft with wingspan between 24.00m - 35.99m.
ICAO Size D	Aircraft with wingspan between 36.00m - 51.99m.
ICAO Size E	Aircraft with wingspan between 52.00m - 64.99m.
ICAO Size F	Aircraft with wingspan between 65.00m - 80.00m.
Init Coord	Snapshot of schedule immediately after Initial Coordination is completed - as advised to airlines in the SALs.
Passenger Air Transport Movement (PATM)	Any aircraft movement which is either a scheduled or chartered passenger flight.
Start	Snapshot of schedule shortly before the start of the scheduling season (exact date given below where used).
Time: Local	Times shown are in LOCAL time for the airport/scheduling season.
Time: UTC	Times shown are in Universal Time Constant (UTC).

Data snapshot descriptions

W18 Start	W18 schedule as cleared on Tue 23-Oct-18.
W18 End	W18 schedule as cleared on Sat 24-Mar-18.
W19 Start	W19 schedule as cleared on Mon 30-Sep-19.
Peak Week	Peak week for W18 is Mon 29-Oct-18 to Sun 04-Nov-18. Peak week for W19 is Mon 16-Dec-19 to Sun 22-Dec-19.

For ACL use

	Airport-Season-Branch-Resource	From date	To date	Time
Full Season Rep 1	EDI-W18-SOS Report-Standard	Sun 28-Oct-2018	Sat 30-Mar-2019	UTC
Full Season Rep 2	EDI-W18-Live-Standard	Sun 28-Oct-2018	Sat 30-Mar-2019	UTC
Full Season Rep 3	EDI-W19-SOS Report-Standard	Sun 27-Oct-2019	Sat 28-Mar-2020	UTC
	Airport-Season-Branch-Resource	From date	To date	Time
Peak Week Rep 1	EDI-W18-SOS Report-Standard	Mon 29-Oct-2018	Sun 04-Nov-2018	UTC
Peak Week Rep 2	EDI-W18-Live-Standard	Mon 29-Oct-2018	Sun 04-Nov-2018	UTC
Peak Week Rep 3	EDI-W19-SOS Report-Standard	Mon 16-Dec-2019	Sun 22-Dec-2019	UTC

EDI SEASONAL COMPARISON REPORT

W18 Start of Season vs W19 Start of Season

OPERATOR		AIRPORT		W18 SEATS	W19 SEATS	SEATS +/-	W18 ATMS	W19 ATMS	ATMS +/-
3V	Tnt Airways	CDG	Paris Ch. De Gaulle	0	0	0	110	0	-110
		LGG	Liege Bierset	0	0	0	110	212	102
3V Total				0	0	0	220	212	-8
A3	Aegean Airlines	ATH	Athens Athinai	6,666	11,832	5,166	38	68	30
A3 Total				6,666	11,832	5,166	38	68	30
AA	American Airlines	JFK	New York John F Kennedy International	352	0	-352	2	0	-2
		PHL	Philadelphia International	0	352	352	0	2	2
AA Total				352	352	0	2	2	0
AF	Air France	CDG	Paris Ch. De Gaulle	108,582	102,844	-5,738	898	616	-282
AF Total				108,582	102,844	-5,738	898	616	-282
AY	Finnair	HEL	Helsinki-Vantaa	10,200	16,800	6,600	102	168	66
AY Total				10,200	16,800	6,600	102	168	66
BA	British Airways	AGP	Malaga	98	0	-98	2	0	-2
		CMF	Chambery	5,880	0	-5,880	65	0	-65
		LCY	London City Airport	204,658	0	-204,658	2,098	0	-2,098
		LGW	London Gatwick	139,172	160,764	21,592	908	918	10
		LHR	London Heathrow	502,472	511,198	8,726	2,506	2,714	208
		SZG	Salzburg W.A. Mozart	2,548	0	-2,548	28	0	-28
		TLS	Toulouse Blagnac	1,960	0	-1,960	22	0	-22
		VRN	Verona	2,646	0	-2,646	29	0	-29
BA Total				859,434	671,962	-187,472	5,658	3,632	-2,026
BCS	European Air Transport	EMA	Nottingham East Midlands	0	0	0	258	0	-258
		LEJ	Leipzig	0	0	0	50	0	-50
BCS Total				0	0	0	308	0	-308
BE	Flybe	BHD	Belfast City Airport	80,496	80,224	-272	1,032	1,028	-4
		BHX	Birmingham International	146,562	137,508	-9,054	1,879	1,721	-158
		CWL	Cardiff-Wales	48,202	61,084	12,882	499	783	284
		DUB	Dublin	78	0	-78	1	0	-1
		EMA	Nottingham East Midlands	54,288	0	-54,288	696	0	-696
		EXT	Exeter	23,790	26,364	2,574	305	338	33
		LCY	London City Airport	80,496	79,248	-1,248	1,032	1,016	-16
		LHR	London Heathrow	88,296	136,968	48,672	1,132	1,756	624
		MAN	Manchester International	65,208	65,988	780	836	846	10
		NOC	Knock International	11,388	10,608	-780	146	136	-10
		SOU	Southampton Eastleigh	105,456	87,144	-18,312	1,352	1,108	-244
BE Total				704,260	685,136	-19,124	8,910	8,732	-178
CJ	Ba Cityflyer	AGP	Malaga	0	98	98	0	2	2
		CMF	Chambery	0	5,684	5,684	0	62	62
		LCY	London City Airport	0	221,372	221,372	0	2,314	2,314
		SZG	Salzburg W.A. Mozart	0	2,548	2,548	0	28	28
		VRN	Verona	0	2,646	2,646	0	28	28
		WAW	Warsaw Okecie	0	0	0	0	14	14
CJ Total				0	232,348	232,348	0	2,448	2,448
D8	Norwegian Air	CPH	Copenhagen Airport	24,552	10,044	-14,508	132	54	-78
		OSL	Oslo	57,834	56,544	-1,290	306	304	-2
		SWF	Newburgh Stewart	57,834	0	-57,834	306	0	-306
		ARN	Stockholm Arlanda	20,088	12,276	-7,812	108	66	-42
D8 Total				160,308	78,864	-81,444	852	54	-798
DL	Delta Air Lines	JFK	New York John F Kennedy International	16,128	40,992	24,864	96	244	148
DL Total				16,128	40,992	24,864	96	244	148
EI	Aer Lingus	DUB	Dublin	96,954	95,896	-1,058	1,331	1,332	1
		ORK	Cork	28,368	27,360	-1,008	394	380	-14
		SNN	Shannon	12,528	12,384	-144	174	172	-2
EI Total				137,850	135,640	-2,210	1,899	1,884	-15
EK	Emirates	DXB	Dubai	85,440	110,880	25,440	240	308	68
EK Total				85,440	110,880	25,440	240	308	68
ENT	Enter Air - Polish Charter	BIA	Bastia Poretta	0	378	378	0	2	2
		BOD	Bordeaux Airport	0	378	378	0	4	4
		CDG	Paris Ch. De Gaulle	0	3,780	3,780	0	24	24
		CFR	Caen Carpiquet	0	189	189	0	1	1
		DUB	Dublin	378	0	-378	2	1	-1
		ENF	Enontekio	378	378	0	3	3	0
		FCO	Rome Fiumicino	0	756	756	0	6	6
		LYS	Lyon	0	567	567	0	6	6
		MRS	Marseille	0	567	567	0	6	6
		NTE	Nantes Atlantique	0	378	378	0	4	4
TLS	Toulouse Blagnac	0	378	378	0	4	4		
ENT Total				756	7,749	6,993	5	61	56
EW	Eurowings	CGN	Cologne Bonn	12,960	12,960	0	72	72	0
		DUS	Dusseldorf	11,880	12,960	1,080	66	72	6
		MUC	Munich Franz Josef Strauss	28,800	12,960	-15,840	160	72	-88

EDI SEASONAL COMPARISON REPORT

W18 Start of Season vs W19 Start of Season

OPERATOR		AIRPORT		W18 SEATS	W19 SEATS	SEATS +/-	W18 ATMS	W19 ATMS	ATMS +/-
EW Total				53,640	38,880	-14,760	298	216	-82
EZY	Easyjet Airline	ALC	Alicante	14,736	15,048	312	86	88	2
		AMS	Amsterdam-Schiphol	106,536	106,992	456	612	612	0
		ATH	Athens Athinai	16,368	16,368	0	88	88	0
		BFS	Belfast International	163,392	160,716	-2,676	952	946	-6
		BIO	Bilbao	16,308	0	-16,308	88	0	-88
		BJV	Bodrum. Milas Airport	372	372	0	2	3	1
		BRS	Bristol	203,568	205,224	1,656	1,148	1,154	6
		BSL	Basel Mulhouse Euroairport Swiss	28,044	30,444	2,400	164	164	0
		CDG	Paris Ch. De Gaulle	80,832	78,816	-2,016	462	466	4
		CPH	Copenhagen Airport	37,860	31,032	-6,828	230	192	-38
		DLM	Dalaman	744	558	-186	4	4	0
		GNB	Grenoble Saint Geoirs	5,952	5,952	0	32	32	0
		GVA	Geneva Geneve-Cointrin	89,388	91,524	2,136	498	504	6
		HAM	Hamburg Fuhlsbuettel	29,760	21,588	-8,172	160	128	-32
		JER	Jersey States	0	15,048	15,048	0	88	88
		KEF	Keflavik International	37,032	30,636	-6,396	212	186	-26
		KRK	Krakow J. Paul li Balice International	22,740	23,472	732	140	142	2
		LGW	London Gatwick	201,000	198,144	-2,856	1,188	1,154	-34
		LIS	Lisbon Lisboa	18,720	21,072	2,352	120	122	2
		LTN	London Luton Airport	157,992	158,088	96	926	924	-2
		LYS	Lyon	5,736	5,364	-372	36	34	-2
		MAD	Madrid Barajas	56,628	57,048	420	328	328	0
		MUC	Munich Franz Josef Strauss	44,220	39,648	-4,572	260	228	-32
		MLA	Milan Malpensa	67,032	66,696	-336	396	110	-286
		NAP	Naples	14,040	11,448	-2,592	90	68	-22
		NCE	Nice Cote D'Azur	372	744	372	2	4	2
		PFO	Paphos International	16,368	16,554	186	88	89	1
		PMI	Palma Mallorca	0	186	186	0	2	2
		PRG	Prague Ruzyne	31,104	26,304	-4,800	174	154	-20
		SOF	Sofia Vrazhdebna	11,160	11,532	372	60	62	2
		STN	London Stansted	196,464	188,664	-7,800	1,184	1,124	-60
		STR	Stuttgart Echterdingen	15,048	0	-15,048	88	0	-88
		SVQ	Sevilla	16,308	16,308	0	88	88	0
		TFS	Tenerife Sur Reina Sofia	24,180	24,180	0	130	130	0
		TXL	Berlin Tegel	22,860	38,640	15,780	130	220	90
		VCE	Venice Marco Polo	28,608	35,220	6,612	176	212	36
		VIE	Vienna	14,676	14,676	0	86	86	0
		VRN	Verona	0	12,276	12,276	0	66	66
EZY Total				1,796,148	1,776,582	-19,566	10,428	10,002	-426
FPO	ASL Airlines France	CDG	Paris Ch. De Gaulle	147	0	-147	2	0	-2
FPO Total				147	0	-147	2	0	-2
FR	Ryanair	ACE	Lanzarote	17,388	13,608	-3,780	92	72	-20
		AGP	Malaga	41,202	40,068	-1,134	218	212	-6
		ALC	Alicante	41,580	41,580	0	220	220	0
		BCN	Barcelona	48,384	50,652	2,268	256	268	12
		BGY	Milan Orio Al Serio	40,446	69,930	29,484	214	370	156
		BLQ	Bologna Guglielmo Marconi	16,254	16,632	378	86	88	2
		BOD	Bordeaux Airport	0	378	378	0	2	2
		BTS	Bratislava Ivanka	16,632	17,766	1,134	88	94	6
		BUD	Budapest Ferihegy	16,632	57,456	40,824	88	304	216
		CIA	Rome Ciampino	40,824	41,202	378	216	218	2
		CPH	Copenhagen Airport	33,264	30,618	-2,646	176	162	-14
		CRL	Charleroi Brussels So	32,508	41,958	9,450	172	222	50
		DUB	Dublin	201,096	199,206	-1,890	1,064	1,054	-10
		EIN	Eindhoven	24,192	16,632	-7,560	128	88	-40
		FAO	Faro	17,388	19,278	1,890	92	102	10
		FKB	Karlsruhe Baden Baden Soellingen	0	1,512	1,512	0	8	8
		FMM	Memmingen-Allgau	16,254	0	-16,254	86	0	-86
		FUE	Fuerteventura	16,254	14,364	-1,890	86	76	-10
		GDN	Gdansk Rebiechowo	25,704	42,714	17,010	136	226	90
		GOT	Gothenburg Landvetter	16,254	16,632	378	86	88	2
		HAM	Hamburg Fuhlsbuettel	32,886	34,020	1,134	174	180	6
		KRK	Krakow J. Paul li Balice International	40,824	43,092	2,268	216	228	12
		KTW	Katowice Pyrzowice	16,632	17,766	1,134	88	94	6
		KUN	Kaunas	0	16,632	16,632	0	88	88
		LDY	Londonderry Eglinton	40,824	41,580	756	216	220	4
		LIS	Lisbon Lisboa	15,876	16,632	756	84	88	4
		LPA	Las Palmas De Gran Canaria	16,254	8,316	-7,938	86	44	-42
		LUX	Luxembourg	0	24,570	24,570	0	130	130
		MLA	Malta Luqa	16,632	19,278	2,646	88	102	14

EDI SEASONAL COMPARISON REPORT

W18 Start of Season vs W19 Start of Season

OPERATOR			AIRPORT			W18 SEATS	W19 SEATS	SEATS +/-	W18 ATMS	W19 ATMS	ATMS +/-
		MRS	Marseille			16,632	17,766	1,134	88	94	6
		NRN	Neiderrhein			1,134	1,512	378	6	8	2
		NTE	Nantes Atlantique			16,632	20,034	3,402	88	106	18
		NYO	Stockholm Skavsta			17,010	0	-17,010	90	0	-90
		OPO	Porto			17,388	1,512	-15,876	92	8	-84
		OTP	Bucharest Otopeni International			0	23,436	23,436	0	124	124
		PMI	Palma Mallorca			0	1,134	1,134	0	6	6
		POZ	Poznan Lawica			16,632	19,278	2,646	88	102	14
		PRG	Prague Ruzyne			24,570	33,642	9,072	130	178	48
		RIX	Riga			8,316	19,278	10,962	44	102	58
		SDR	Santander			16,632	17,388	756	88	92	4
		SOF	Sofia Vrazhdebna			16,632	21,924	5,292	88	116	28
		STN	London Stansted			271,026	0	-271,026	1,434	0	-1,434
		SVQ	Sevilla			16,254	16,254	0	86	86	0
		SXF	Berlin Schoenefeld			49,518	44,982	-4,536	262	238	-24
		TFS	Tenerife Sur Reina Sofia			34,398	34,776	378	182	184	2
		TLL	Tallinn Ulemiste			16,632	16,632	0	88	88	0
		TLS	Toulouse Blagnac			16,632	18,144	1,512	88	96	8
		TSF	Venice Treviso			24,570	16,632	-7,938	130	88	-42
		VLC	Valencia			24,570	756	-23,814	130	4	-126
		WMI	Modlin			33,264	55,566	22,302	176	294	118
		WRO	Wroclaw Strachowice			17,010	17,766	756	90	94	4
		FR Total				1,497,636	1,352,484	-145,152	7,924	7,156	-768
	HU	Hainan Airlines	PEK	Beijing Capital		27,690	0	-27,690	130	0	-130
		HU Total				27,690	0	-27,690	130	0	-130
	KL	Klm Royal Dutch Airlines	AMS	Amsterdam-Schiphol		169,148	160,880	-8,268	1,148	1,152	4
		KL Total				169,148	160,880	-8,268	1,148	1,152	4
	LH	Lufthansa	FRA	Frankfurt International		88,176	82,904	-5,272	476	482	6
			MUC	Munich Franz Josef Strauss		7,198	17,292	10,094	66	132	66
		LH Total				95,374	100,196	4,822	542	614	72
	LM	Loganair	ABZ	Aberdeen Dyce		0	0	0	104	104	0
			BFS	Belfast International		0	0	0	28	44	16
			BGO	Bergen Flesland		0	2,960	2,960	0	80	80
			EMA	Nottingham East Midlands		0	49,588	49,588	64	1,095	1,031
			GCI	Guernsey		0	222	222	0	6	6
			ILY	Islay Glenegedale		0	66	66	0	2	2
			INV	Inverness		0	0	0	230	187	-43
			IOM	Isle Of Man Ronaldsway		3,102	5,874	2,772	94	178	84
			KOI	Kirkwall		22,308	22,836	528	676	692	16
			LSI	Shetland Islands Sumburgh		24,938	19,569	-5,369	732	593	-139
			NWI	Norwich		16,219	24,272	8,053	523	656	133
			SVG	Stavanger Sola		0	6,364	6,364	0	172	172
			SYJ	Stornoway		12,249	11,908	-341	373	356	-17
			WIC	Wick		7,425	8,448	1,023	225	256	31
		LM Total				86,241	152,107	65,866	3,049	4,421	1,372
	LS	Jet2.Com	ACE	Lanzarote		24,759	31,563	6,804	131	167	36
			AGP	Malaga		6,722	10,206	3,484	36	54	18
			ALC	Alicante		21,924	24,192	2,268	116	128	12
			AYT	Antalya		4,536	5,859	1,323	24	31	7
			BUD	Budapest Ferihegy		16,550	16,632	82	88	88	0
			CDG	Paris Ch. De Gaulle		378	0	-378	4	0	-4
			DLM	Dalaman		0	567	567	0	3	3
			DUB	Dublin		1,134	0	-1,134	13	0	-13
			ENF	Enontekio		0	378	378	0	2	2
			FAO	Faro		6,312	6,048	-264	36	32	-4
			FCO	Rome Fiumicino		0	756	756	0	8	8
			FNC	Funchal		8,316	8,316	0	44	44	0
			FUE	Fuerteventura		16,443	17,388	945	87	92	5
			GLA	Glasgow International		0	0	0	3	0	-3
			GVA	Geneva Geneve-Cointrin		10,962	10,773	-189	58	57	-1
			HAJ	Hanover		0	378	378	0	3	3
			LCA	Larnaca		756	1,512	756	4	8	4
			LPA	Las Palmas De Gran Canaria		16,632	17,766	1,134	88	94	6
			MAD	Madrid Barajas		378	0	-378	4	0	-4
			NAP	Naples		378	0	-378	2	0	-2
			NUE	Nuremberg		0	378	378	0	2	2
			PFO	Paphos International		4,158	4,536	378	22	24	2
			PMI	Palma Mallorca		3,780	5,670	1,890	20	30	10
			SCQ	Santiago De Compostela		378	0	-378	4	0	-4
			SZG	Salzburg W.A. Mozart		5,670	5,670	0	30	30	0
			TFS	Tenerife Sur Reina Sofia		31,941	37,989	6,048	169	201	32

EDI SEASONAL COMPARISON REPORT

W18 Start of Season vs W19 Start of Season

OPERATOR		AIRPORT		W18 SEATS	W19 SEATS	SEATS +/-	W18 ATMS	W19 ATMS	ATMS +/-
		TIA	Tirana Rinas	148	0	-148	1	0	-1
		TLS	Toulouse Blagnac	0	296	296	0	2	2
		TRN	Turin Citta Di Torino	5,292	5,292	0	28	28	0
		VCE	Venice Marco Polo	378	378	0	2	2	0
		VIE	Vienna	7,692	4,158	-3,534	42	22	-20
LS Total				195,617	216,701	21,084	1,056	1,152	96
MT	Thomas Cook	BFS	Belfast International	440	0	-440	2	0	-2
		IVL	Ivalo	360	360	0	2	2	0
MT Total				800	360	-440	4	4	0
NPT	Atlantic Airlines	EMA	Nottingham East Midlands	0	0	0	420	464	44
		STN	London Stansted	0	0	0	630	630	0
NPT Total				0	0	0	1,050	1,094	44
OE	Lauda Motion	VIE	Vienna	0	23,400	23,400	0	130	130
OE Total				0	23,400	23,400	0	130	130
OS	Austrian Airlines	BRS	Bristol	0	174	174	0	1	1
		INN	Innsbruck Kranebitten	3,888	4,266	378	27	29	2
		MAN	Manchester International	144	144	0	1	1	0
OS Total				4,032	4,584	552	28	31	3
QR	Qatar Airways	DOH	Doha	87,164	104,412	17,248	308	308	0
QR Total				87,164	104,412	17,248	308	308	0
QY	European Air Transport	CGN	Cologne Bonn	0	0	0	0	8	8
		EMA	Nottingham East Midlands	0	0	0	0	260	260
		LEJ	Leipzig	0	0	0	0	35	35
QY Total				0	0	0	0	303	303
RC	Atlantic Airways P/F	FAE	Faroe Islands Vagar	7,776	13,296	5,520	54	84	30
RC Total				7,776	13,296	5,520	54	84	30
SK	Sas Scandinavian Airlines	ARN	Stockholm Arlanda	22,176	20,130	-2,046	132	140	8
		CPH	Copenhagen Airport	0	1,776	1,776	0	12	12
		OSL	Oslo	1,186	2,310	1,124	8	14	6
SK Total				23,362	24,216	854	140	166	26
SN	Brussels Airlines	BRU	Brussels	69,936	69,372	-564	496	492	-4
SN Total				69,936	69,372	-564	496	492	-4
SRR	Star Air	CGN	Cologne Bonn	0	0	0	220	220	0
SRR Total				0	0	0	220	220	0
SWN	West Air Sweden	EMA	Nottingham East Midlands	0	0	0	40	0	-40
		INV	Inverness	0	0	0	40	0	-40
SWN Total				0	0	0	80	0	-80
TK	Turkish Airlines	IST	Istanbul Ataturk	36,300	51,964	15,664	220	308	88
TK Total				36,300	51,964	15,664	220	308	88
TO	Transavia France	ORY	Paris Orly	3,402	378	-3,024	18	2	-16
TO Total				3,402	378	-3,024	18	2	-16
TOM	TUI Airways	ABZ	Aberdeen Dyce	0	0	0	22	0	-22
		ACE	Lanzarote	8,316	8,316	0	44	44	0
		AGP	Malaga	0	1,512	1,512	0	8	8
		DLM	Dalaman	0	189	189	0	2	2
		DUB	Dublin	0	0	0	13	0	-13
		GVA	Geneva Geneve-Cointrin	5,103	4,536	-567	28	24	-4
		INN	Innsbruck Kranebitten	5,481	5,670	189	29	30	1
		KTT	Kittila	378	378	0	2	2	0
		LCA	Larnaca	189	189	0	1	2	1
		LPA	Las Palmas De Gran Canaria	5,103	0	-5,103	28	0	-28
		PFO	Paphos International	4,347	4,347	0	24	23	-1
		PMI	Palma Mallorca	378	567	189	4	4	0
		RHO	Rhodes Diagoras Airport	189	189	0	1	1	0
		TFS	Tenerife Sur Reina Sofia	16,632	16,632	0	88	88	0
		TLS	Toulouse Blagnac	0	4,158	4,158	1	22	21
TOM Total				46,116	46,683	567	285	250	-35
UA	United Airlines	EWR	Liberty International (Newark)	52,052	52,052	0	308	308	0
UA Total				52,052	52,052	0	308	308	0
VY	Vueling Airlines	BCN	Barcelona	12,600	12,240	-360	70	68	-2
VY Total				12,600	12,240	-360	70	68	-2
W6	Wizz Air	BUD	Budapest Ferihegy	0	15,480	15,480	0	86	86
		GDN	Gdansk Rebiechowo	0	15,840	15,840	0	88	88
		OTP	Bucharest Otopeni International	0	12,880	12,880	0	56	56
		WAW	Warsaw Okecie	0	26,680	26,680	0	116	116
W6 Total				0	70,880	70,880	0	346	346
WK	Edelweiss	ZRH	Zurich	12,600	9,360	-3,240	70	52	-18
WK Total				12,600	9,360	-3,240	70	52	-18
WW	WOW	KEF	Keflavik International	35,200	0	-35,200	176	0	-176
WW Total				35,200	0	-35,200	176	0	-176
ZT	Titan Airways	BRS	Bristol	0	0	0	1	0	-1

EDI SEASONAL COMPARISON REPORT

W18 Start of Season vs W19 Start of Season

OPERATOR		AIRPORT		W18 SEATS	W19 SEATS	SEATS +/-	W18 ATMS	W19 ATMS	ATMS +/-
CWL	Cardiff-Wales			0	0	0	1	0	-1
ENF	Enontekio			360	0	-360	2	0	-2
ZT Total				360	0	-360	4	0	-4
TOTAL				6,403,317	6,376,426	-26,891	47,336	47,308	-28