

Start of Season Report

Report Date: Tue 22-Oct-2019

Headlines

	W19 Start	vs. W18 Start	vs. W18 End
Total Air Transport Movements (Passenger & Freight)	103,836	▼ -1.2%	▲ 1.1%
Total Passenger Air Transport Movements	103,814	▼ -1.2%	▲ 1.0%
Total Passenger Air Transport Movement Seats	20,390,790	▼ -0.1%	▲ 2.5%
Average Seats per Passenger Air Transport Movement	196	▲ 1.1%	▲ 1.4%
Percentage of allocated slots cleared as requested (OK)	96%		

Contents

Page Content

2	Runway Scheduling Limits
3	ATM Allocation by Operator (Full season and Peak Week Comparison)
4	Peak Week - Allocation and Slot Adjustment Distribution by Operator
5	Significant Route Changes
6	Full Season - ATM Analysis
7	Full Season - PATM Seats Analysis
8	Full Season - Terminal Analysis
9	Full Season - Aircraft Size Analysis
10	Full Season - Seasonality
11	Peak Week - Hourly Runway Demand
12	Peak Week - Hourly Runway Allocation
13	Peak Week - Hourly Runway Allocation Comparison (W19 Start vs. W18 Start)
14	Peak Week - Hourly Runway Allocation Comparison (W19 Start vs. W18 End)
15	Peak Week Histogram - Departure Passengers (T60/30) - North Terminal - All Operators
16	Peak Week Histogram - Departure Passengers (T120/30) - North Terminal - All Operators
17	Peak Week Histogram - Arrival Passengers (T60/30) - North Terminal (International) - All Operators
18	Peak Week Histogram - Arrival Passengers (T60/15) - North Terminal (Domestic) - All Operators
19	Peak Week Histogram - Departure Passengers (T60/30) - South Terminal - All Operators
20	Peak Week Histogram - Departure Passengers (T120/30) - South Terminal - All Operators
21	Peak Week Histogram - Arrival Passengers (T60/30) - South Terminal (International) - All Operators
22	Peak Week Histogram - Arrival Passengers (T60/15) - South Terminal (Domestic) - All Operators
23	Glossary

W18 scheduling season runs from Sun 28-Oct-2018 to Sat 30-Mar-2019 (154 days).

W19 scheduling season runs from Sun 27-Oct-2019 to Sat 28-Mar-2020 (154 days).

Disclaimer

No warranty whether expressed or implied as to the completeness, accuracy, fitness for purpose, or satisfactory quality is given by ACL regarding the information in this report, which is provided by third parties. Accordingly, ACL excludes all liability with regard to such data.

The contents of this report may not be reproduced without the written consent of ACL.

Peak Week - Allocation and Slot Adjustment Distribution by Operator



Schedule: W19 Start

Operator	W19 allocated ATMs	SLOT ADJUSTMENTS (MINUTES OFF REQUESTED TIME)													Requests with NO slot allocated		
		0	5	10	15	20	25	30	35	40	45	50	55	60		>60	
Aegean Airlines	6	100.0%	0.0%	0.0%	0.0%	0.0%	0.0%	0.0%	0.0%	0.0%	0.0%	0.0%	0.0%	0.0%	0.0%	0.0%	-
Aer Lingus	88	85.2%	4.5%	1.1%	3.4%	2.3%	2.3%	0.0%	0.0%	0.0%	0.0%	0.0%	0.0%	0.0%	0.0%	0.0%	-
Air Arabia Egypt	-	-	-	-	-	-	-	-	-	-	-	-	-	-	-	-	-
Air Arabia Maroc	12	100.0%	0.0%	0.0%	0.0%	0.0%	0.0%	0.0%	0.0%	0.0%	0.0%	0.0%	0.0%	0.0%	0.0%	0.0%	-
Air China	8	100.0%	0.0%	0.0%	0.0%	0.0%	0.0%	0.0%	0.0%	0.0%	0.0%	0.0%	0.0%	0.0%	0.0%	0.0%	-
Air Europa	28	100.0%	0.0%	0.0%	0.0%	0.0%	0.0%	0.0%	0.0%	0.0%	0.0%	0.0%	0.0%	0.0%	0.0%	0.0%	-
Air Itlay	-	-	-	-	-	-	-	-	-	-	-	-	-	-	-	-	-
Air Malta	24	95.8%	0.0%	0.0%	0.0%	0.0%	0.0%	0.0%	0.0%	4.2%	0.0%	0.0%	0.0%	0.0%	0.0%	0.0%	2
Air Transat	14	92.9%	0.0%	0.0%	0.0%	0.0%	0.0%	0.0%	0.0%	7.1%	0.0%	0.0%	0.0%	0.0%	0.0%	0.0%	-
airBaltic	30	96.7%	0.0%	0.0%	0.0%	0.0%	0.0%	0.0%	0.0%	0.0%	3.3%	0.0%	0.0%	0.0%	0.0%	0.0%	2
Anisee	-	-	-	-	-	-	-	-	-	-	-	-	-	-	-	-	-
ASL Airlines France	-	-	-	-	-	-	-	-	-	-	-	-	-	-	-	-	-
Aurigny Air Services	82	100.0%	0.0%	0.0%	0.0%	0.0%	0.0%	0.0%	0.0%	0.0%	0.0%	0.0%	0.0%	0.0%	0.0%	0.0%	-
Austrian Airlines	-	-	-	-	-	-	-	-	-	-	-	-	-	-	-	-	-
Belavia Belarusian Airlines	8	100.0%	0.0%	0.0%	0.0%	0.0%	0.0%	0.0%	0.0%	0.0%	0.0%	0.0%	0.0%	0.0%	0.0%	0.0%	-
British Airways	875	99.8%	0.0%	0.0%	0.0%	0.0%	0.1%	0.0%	0.0%	0.1%	0.0%	0.0%	0.0%	0.0%	0.0%	0.0%	-
Carpatair	-	-	-	-	-	-	-	-	-	-	-	-	-	-	-	-	-
Cathay Pacific	14	100.0%	0.0%	0.0%	0.0%	0.0%	0.0%	0.0%	0.0%	0.0%	0.0%	0.0%	0.0%	0.0%	0.0%	0.0%	-
Cello Aviation	-	-	-	-	-	-	-	-	-	-	-	-	-	-	-	-	-
China Airlines	8	100.0%	0.0%	0.0%	0.0%	0.0%	0.0%	0.0%	0.0%	0.0%	0.0%	0.0%	0.0%	0.0%	0.0%	0.0%	-
China Eastern	14	100.0%	0.0%	0.0%	0.0%	0.0%	0.0%	0.0%	0.0%	0.0%	0.0%	0.0%	0.0%	0.0%	0.0%	0.0%	-
EasyJet	1,976	98.1%	1.6%	0.3%	0.0%	0.0%	0.0%	0.0%	0.0%	0.0%	0.0%	0.1%	0.0%	0.0%	0.0%	0.0%	5
EasyJet Europe	270	98.9%	0.7%	0.4%	0.0%	0.0%	0.0%	0.0%	0.0%	0.0%	0.0%	0.0%	0.0%	0.0%	0.0%	0.0%	-
EasyJet Switzerland	60	100.0%	0.0%	0.0%	0.0%	0.0%	0.0%	0.0%	0.0%	0.0%	0.0%	0.0%	0.0%	0.0%	0.0%	0.0%	-
Emirates	48	95.8%	0.0%	0.0%	0.0%	0.0%	0.0%	0.0%	0.0%	0.0%	0.0%	4.2%	0.0%	0.0%	0.0%	0.0%	-
Enter Air	3	0.0%	0.0%	66.7%	0.0%	0.0%	0.0%	0.0%	0.0%	0.0%	0.0%	0.0%	0.0%	0.0%	0.0%	33.3%	2
Finnair	6	100.0%	0.0%	0.0%	0.0%	0.0%	0.0%	0.0%	0.0%	0.0%	0.0%	0.0%	0.0%	0.0%	0.0%	0.0%	-
Flybe	-	-	-	-	-	-	-	-	-	-	-	-	-	-	-	-	-
Freebird Airlines	1	100.0%	0.0%	0.0%	0.0%	0.0%	0.0%	0.0%	0.0%	0.0%	0.0%	0.0%	0.0%	0.0%	0.0%	0.0%	-
Garuda Indonesia	12	33.3%	16.7%	0.0%	0.0%	8.3%	0.0%	8.3%	0.0%	0.0%	0.0%	16.7%	0.0%	0.0%	16.7%	0.0%	-
Georgian Airways	4	100.0%	0.0%	0.0%	0.0%	0.0%	0.0%	0.0%	0.0%	0.0%	0.0%	0.0%	0.0%	0.0%	0.0%	0.0%	-
Germania	-	-	-	-	-	-	-	-	-	-	-	-	-	-	-	-	-
Iberia Express	28	92.9%	7.1%	0.0%	0.0%	0.0%	0.0%	0.0%	0.0%	0.0%	0.0%	0.0%	0.0%	0.0%	0.0%	0.0%	14
Icelandair	16	81.3%	12.5%	6.3%	0.0%	0.0%	0.0%	0.0%	0.0%	0.0%	0.0%	0.0%	0.0%	0.0%	0.0%	0.0%	-
Indigo	-	-	-	-	-	-	-	-	-	-	-	-	-	-	-	-	-
Iraqi Airways	4	100.0%	0.0%	0.0%	0.0%	0.0%	0.0%	0.0%	0.0%	0.0%	0.0%	0.0%	0.0%	0.0%	0.0%	0.0%	-
Jazeera Airways	14	100.0%	0.0%	0.0%	0.0%	0.0%	0.0%	0.0%	0.0%	0.0%	0.0%	0.0%	0.0%	0.0%	0.0%	0.0%	-
Med-View Airline	-	-	-	-	-	-	-	-	-	-	-	-	-	-	-	-	-
Norwegian	366	95.9%	2.2%	0.8%	0.3%	0.0%	0.0%	0.0%	0.0%	0.3%	0.0%	0.0%	0.3%	0.0%	0.3%	0.0%	-
Norwegian Air UK Ltd.	137	98.5%	0.0%	0.0%	1.5%	0.0%	0.0%	0.0%	0.0%	0.0%	0.0%	0.0%	0.0%	0.0%	0.0%	0.0%	-
Primera Air	36	69.4%	2.8%	0.0%	5.6%	2.8%	0.0%	2.8%	2.8%	5.6%	0.0%	0.0%	2.8%	0.0%	5.6%	0.0%	-
Qatar Airways	14	100.0%	0.0%	0.0%	0.0%	0.0%	0.0%	0.0%	0.0%	0.0%	0.0%	0.0%	0.0%	0.0%	0.0%	0.0%	-
Rossiya Airlines	14	100.0%	0.0%	0.0%	0.0%	0.0%	0.0%	0.0%	0.0%	0.0%	0.0%	0.0%	0.0%	0.0%	0.0%	0.0%	-
Royal Air Maroc	14	100.0%	0.0%	0.0%	0.0%	0.0%	0.0%	0.0%	0.0%	0.0%	0.0%	0.0%	0.0%	0.0%	0.0%	0.0%	-
Rwandair	6	100.0%	0.0%	0.0%	0.0%	0.0%	0.0%	0.0%	0.0%	0.0%	0.0%	0.0%	0.0%	0.0%	0.0%	0.0%	4
Ryanair	160	100.0%	0.0%	0.0%	0.0%	0.0%	0.0%	0.0%	0.0%	0.0%	0.0%	0.0%	0.0%	0.0%	0.0%	0.0%	20
Smartwings	8	100.0%	0.0%	0.0%	0.0%	0.0%	0.0%	0.0%	0.0%	0.0%	0.0%	0.0%	0.0%	0.0%	0.0%	0.0%	-
Swiss International	2	100.0%	0.0%	0.0%	0.0%	0.0%	0.0%	0.0%	0.0%	0.0%	0.0%	0.0%	0.0%	0.0%	0.0%	0.0%	-
TACV - Cabo Verde Airlines	-	-	-	-	-	-	-	-	-	-	-	-	-	-	-	-	4
TAP Air Portugal	52	96.2%	0.0%	0.0%	3.8%	0.0%	0.0%	0.0%	0.0%	0.0%	0.0%	0.0%	0.0%	0.0%	0.0%	0.0%	4
Thomas Cook (UK)	106	87.7%	3.8%	0.0%	1.9%	0.0%	0.9%	0.0%	0.9%	0.0%	0.9%	0.9%	0.9%	0.0%	1.9%	0.0%	-
Titan Airways	24	95.8%	0.0%	0.0%	0.0%	0.0%	0.0%	0.0%	0.0%	0.0%	0.0%	0.0%	4.2%	0.0%	0.0%	0.0%	-
Travel Service	198	84.8%	2.5%	2.0%	1.5%	2.5%	0.5%	0.5%	0.0%	0.5%	0.0%	1.0%	0.0%	1.0%	3.0%	0.0%	5
Tunisair	6	100.0%	0.0%	0.0%	0.0%	0.0%	0.0%	0.0%	0.0%	0.0%	0.0%	0.0%	0.0%	0.0%	0.0%	0.0%	-
Turkish Airlines	42	100.0%	0.0%	0.0%	0.0%	0.0%	0.0%	0.0%	0.0%	0.0%	0.0%	0.0%	0.0%	0.0%	0.0%	0.0%	-
Turkmenistan Airlines	4	50.0%	0.0%	0.0%	0.0%	0.0%	0.0%	0.0%	0.0%	0.0%	0.0%	0.0%	0.0%	0.0%	50.0%	0.0%	-
Ukraine International	28	96.4%	0.0%	0.0%	0.0%	0.0%	0.0%	0.0%	0.0%	0.0%	0.0%	0.0%	0.0%	0.0%	3.6%	0.0%	-
Virgin Atlantic	67	95.5%	1.5%	1.5%	0.0%	0.0%	1.5%	0.0%	0.0%	0.0%	0.0%	0.0%	0.0%	0.0%	0.0%	0.0%	1
Vueling	182	93.4%	6.0%	0.0%	0.0%	0.5%	0.0%	0.0%	0.0%	0.0%	0.0%	0.0%	0.0%	0.0%	0.0%	0.0%	-
Westjet	22	95.5%	0.0%	0.0%	4.5%	0.0%	0.0%	0.0%	0.0%	0.0%	0.0%	0.0%	0.0%	0.0%	0.0%	0.0%	-
Wizz Air	56	75.0%	14.3%	0.0%	3.6%	0.0%	1.8%	3.6%	0.0%	0.0%	1.8%	0.0%	0.0%	0.0%	0.0%	0.0%	-
Wizz Air UK	-	-	-	-	-	-	-	-	-	-	-	-	-	-	-	-	118
WOW Air	-	-	-	-	-	-	-	-	-	-	-	-	-	-	-	-	-
TOTAL	5,183	96.5%	1.6%	0.3%	0.3%	0.2%	0.1%	0.1%	0.1%	0.1%	0.0%	0.2%	0.1%	0.0%	0.3%	0.0%	181

Operators with 0 'allocated ATMs' and 0 'Requests with NO slot allocated' in W19, are included in this list due to having slots allocated in either W18 Start or W18 End schedules.

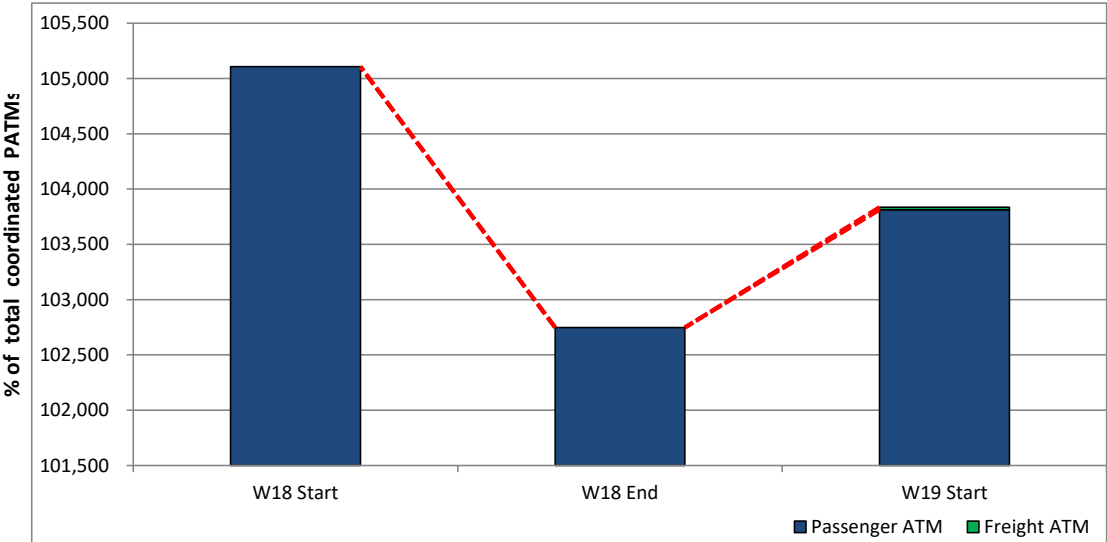
Significant Route Changes

Operator	Category	Description of change from W18 schedule to W19 schedule
Air Arabia	NEW	Service to SHJ
Air China	NEW	Service to PVG
Air China	CANCELLED	Service to CTU
Air Malta	CHANGE	Increased service to MLA
Anisec	CANCELLED	Service to VIE
British Airways	NEW	Service to BGY, LPA, BIO
British Airways	CANCELLED	Service to BCN, FLL, VLC
China Eastern	CHANGE	Increased service to PVG
EasyJet	NEW	Service to AOI, AYT, RMF
EasyJet	CHANGE	Increased service to KRK, AQJ
EasyJet	CANCELLED	Service to ABZ, WAW
Flybe	CANCELLED	Service to NQY
Garuda Indonesia	NEW	Service to CGK *cancelled after report was generated
Jazeera Airways	NEW	Service to KWI
Norwegian	CHANGE	Decreased service to MAD, TRD
Norwegian	CANCELLED	Service to GOT, PMI, OSL
Norwegian Air UK Ltd.	NEW	Service to BKK, GIG, MIA, SFO
Norwegian Air UK Ltd.	CANCELLED	Service to DEN, FLL, LAS, OAK, ORD
TUI Airways	NEW	Service to SJD
TUI Airways	CANCELLED	Service to CMB, FMM, PVR
Turkmenistan Airlines	NEW	Service to ASB
Virgin Atlantic	CANCELLED	Service to CUN, LAS
Vueling	NEW	Service to ALC, OVD
Vueling	CHANGE	Increased service to CDG, FCO, BCN
Wizz Air	NEW	Service to BUD, CLJ, GDN

Full Season - ATM Analysis

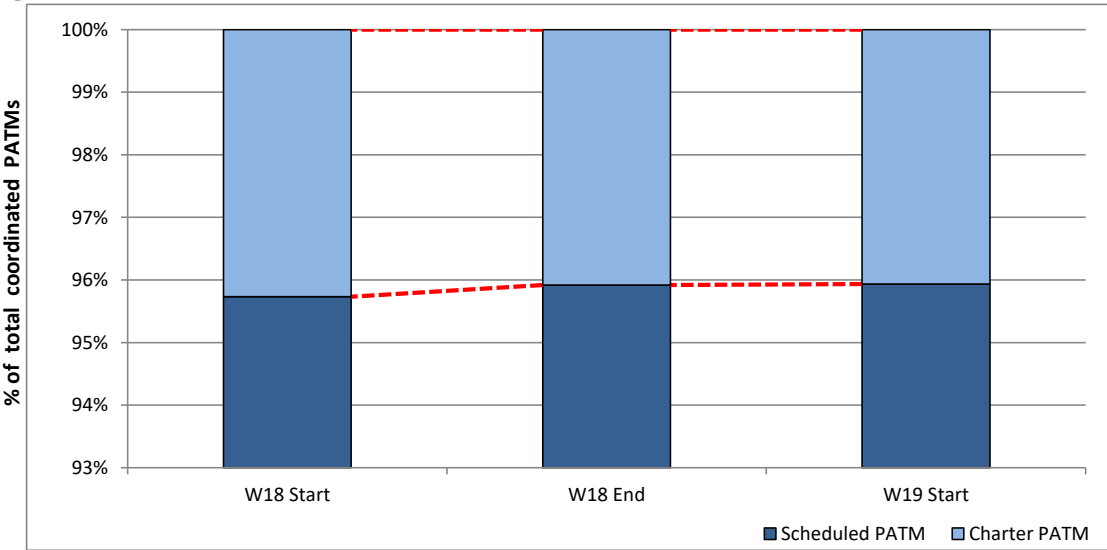


Total ATMs: Passenger ATMs vs. Freight ATMs



Schedule Snapshot

Passenger ATMs: Scheduled vs. Charter

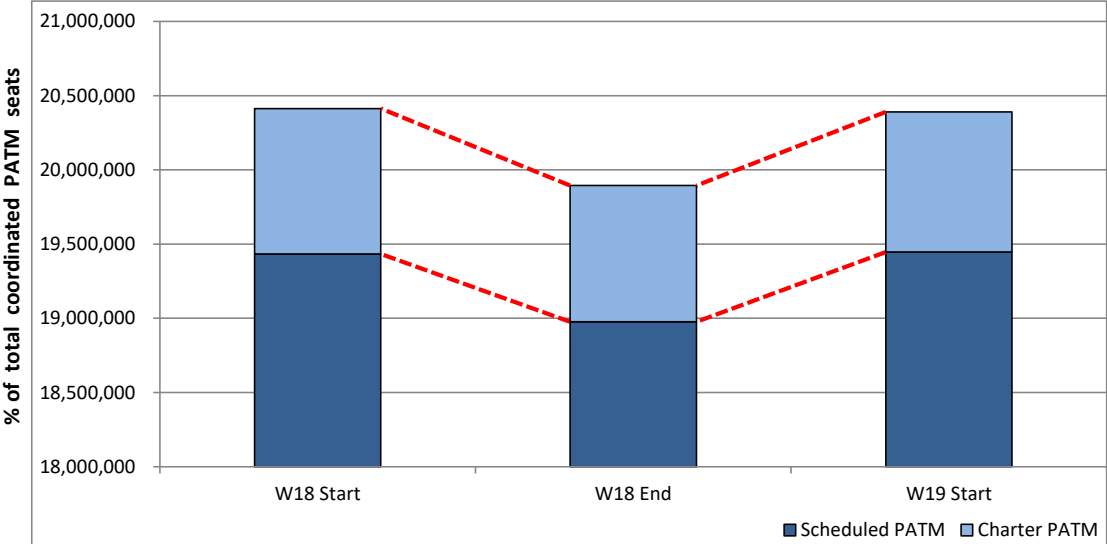


Schedule Snapshot

Full Season - PATM Seats Analysis

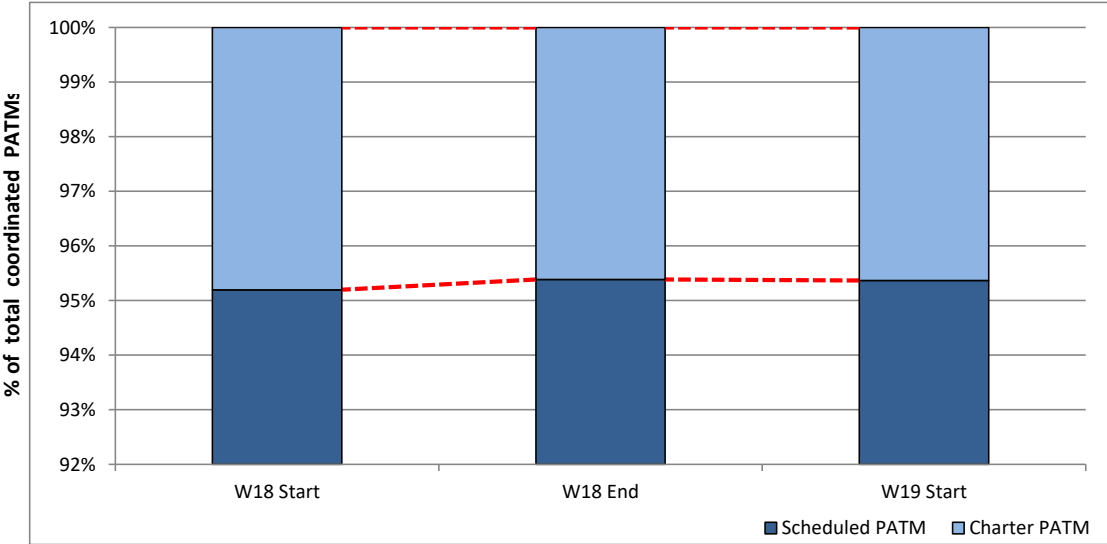


Total Passenger ATM seats: Scheduled vs. Charter



Schedule Snapshot

Passenger ATM seats: Scheduled vs. Charter

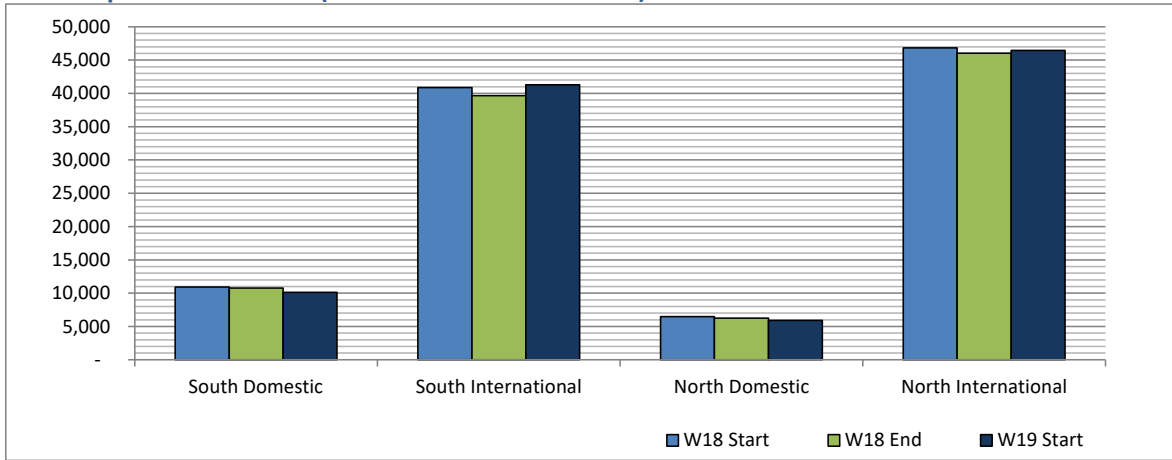


Schedule Snapshot

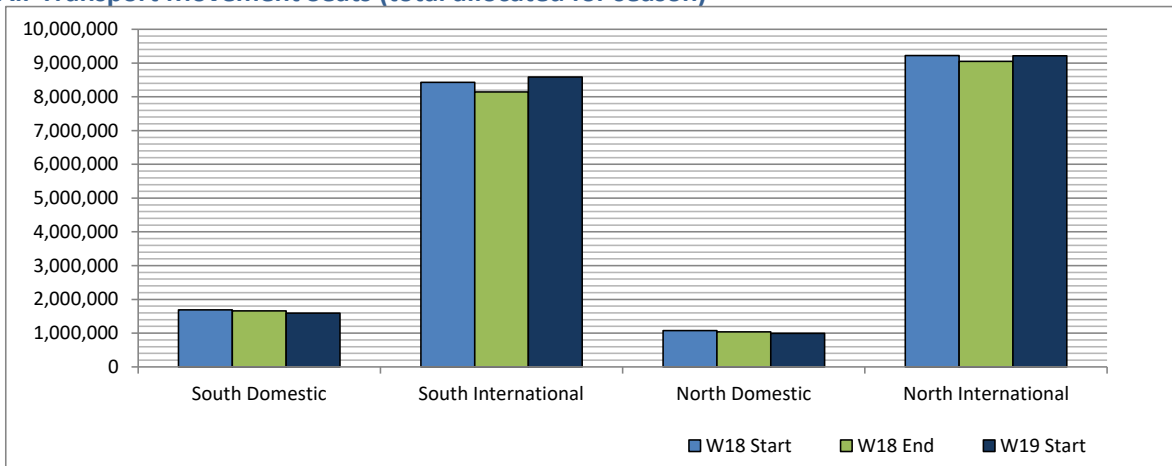
Full Season - Terminal Analysis



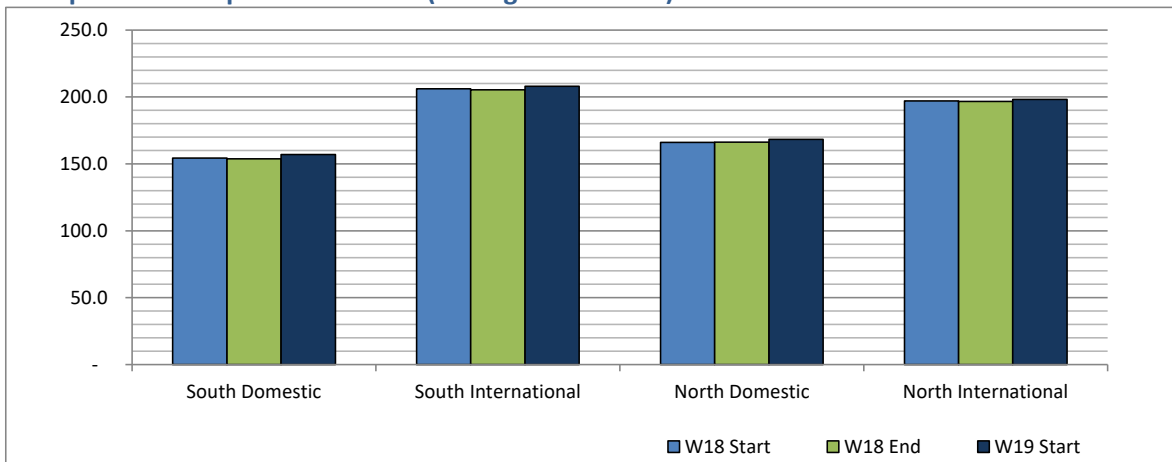
Air Transport Movements (total allocated for season)



Air Transport Movement Seats (total allocated for season)



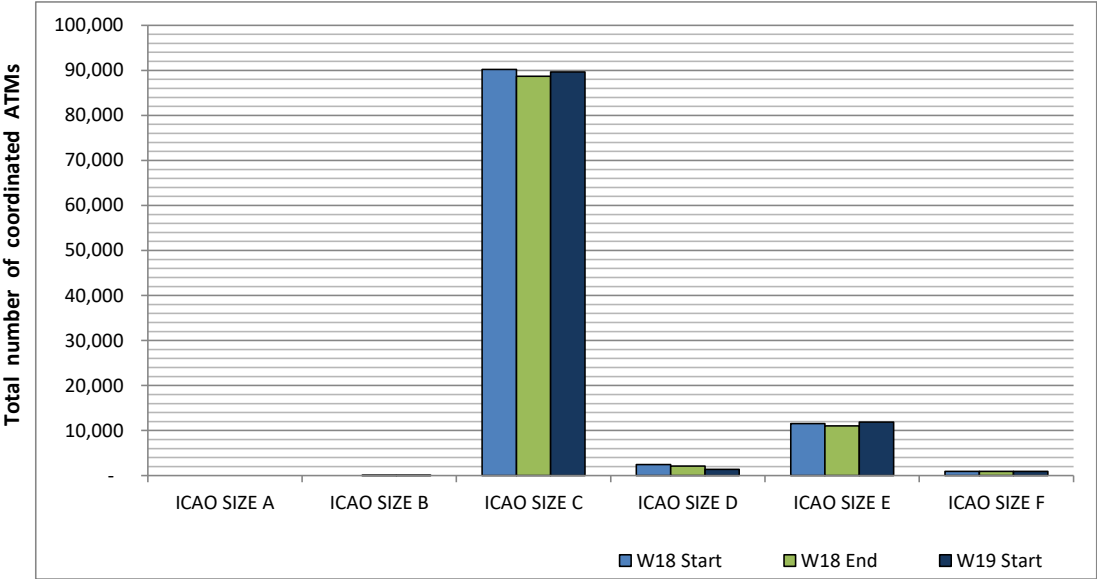
Seats per Air Transport Movement (average for season)



Full Season - Aircraft Size Analysis

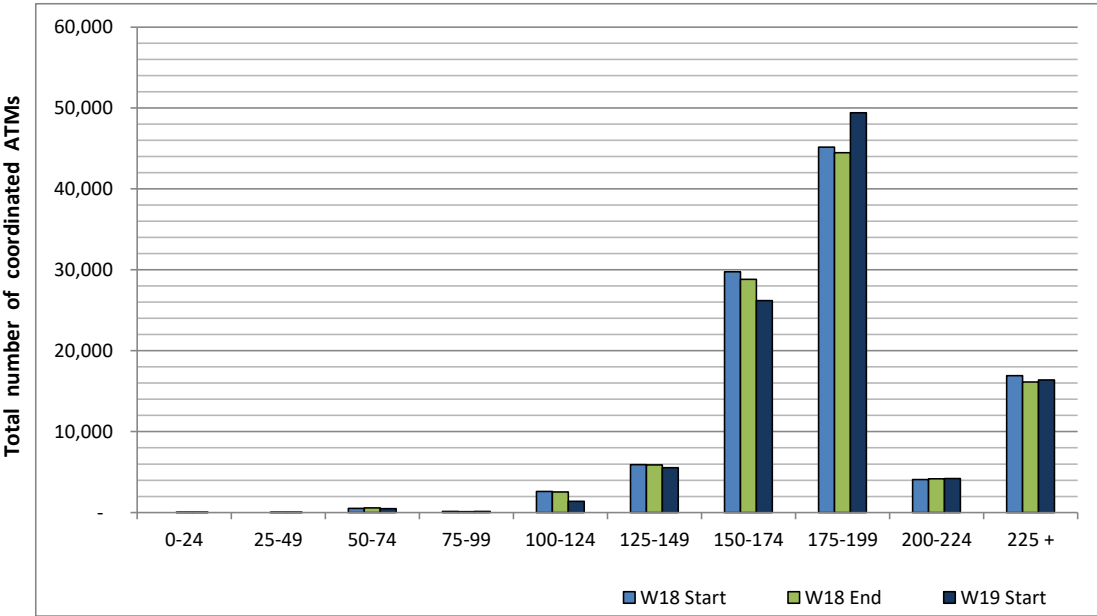


ICAO size designation



Note: See Glossary for definitions of ICAO SIZE groupings

Air Transport Movement seat distribution

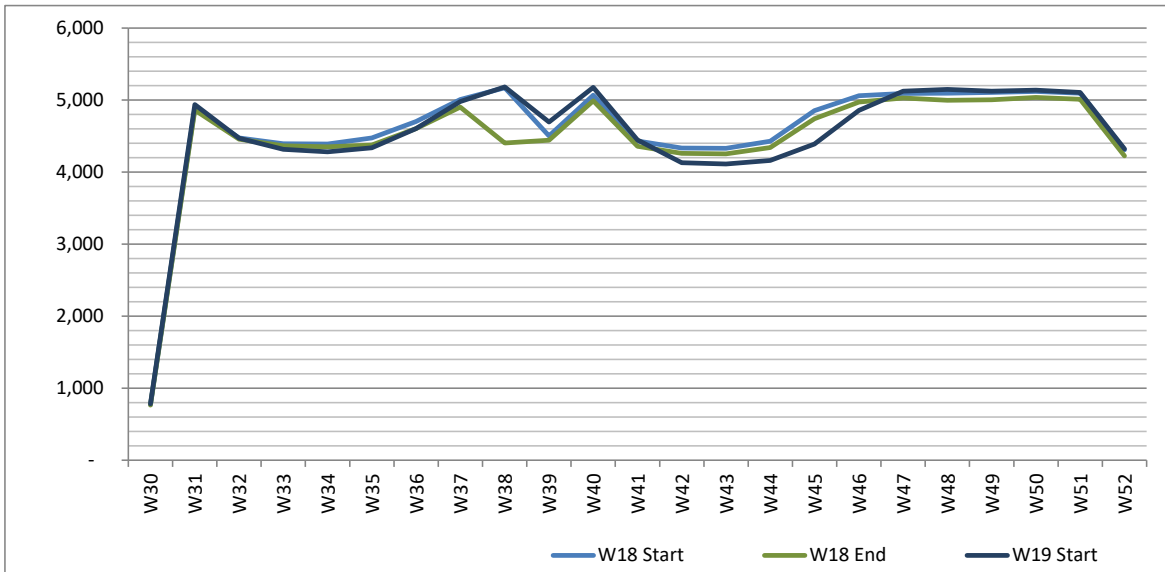


Note: FREIGHT-ONLY services with 0 seats are included in the first seat band '0-24'

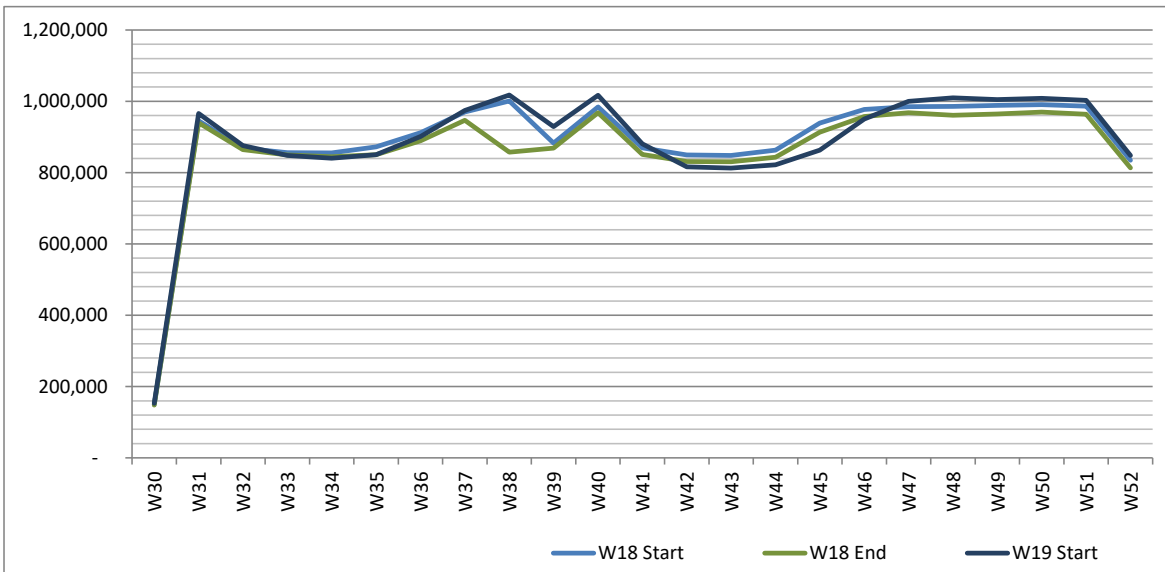
Full Season - Seasonality



Air Transport Movements by week of season



Air Transport Movement Seats by week of season



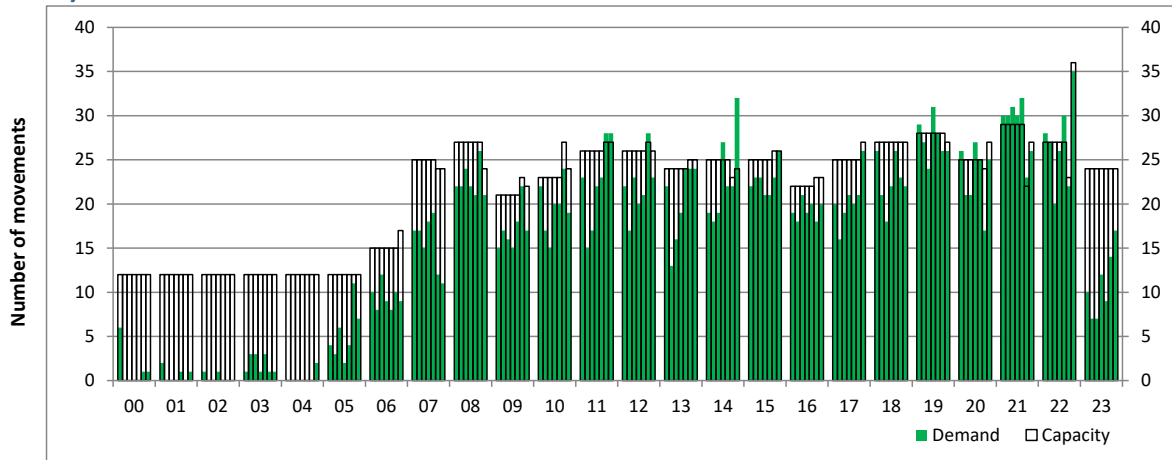
Peak Week - Hourly Runway Demand

Schedule: W19 Start



Hourly Arrival Demand

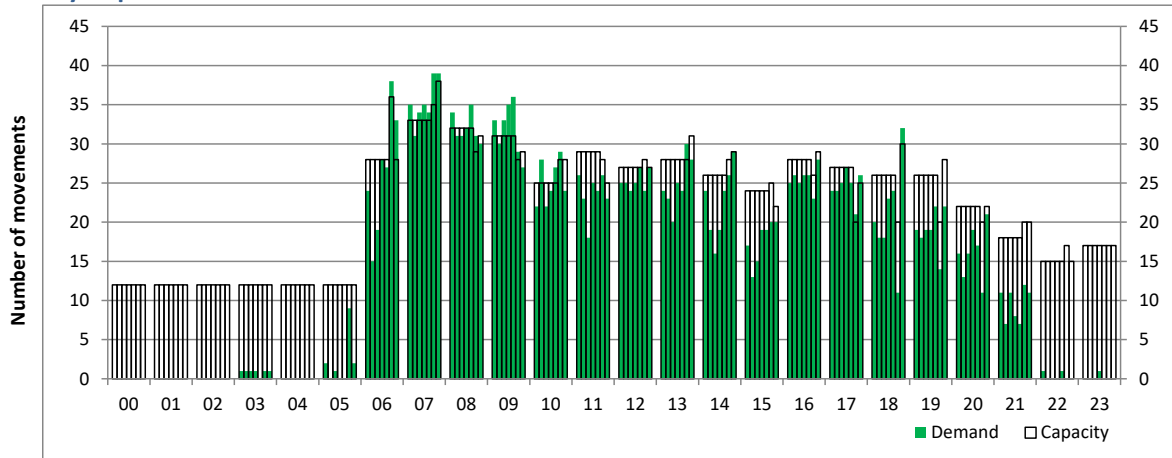
Time: UTC



Hour of day (24 hour format)

Hourly Departure Demand

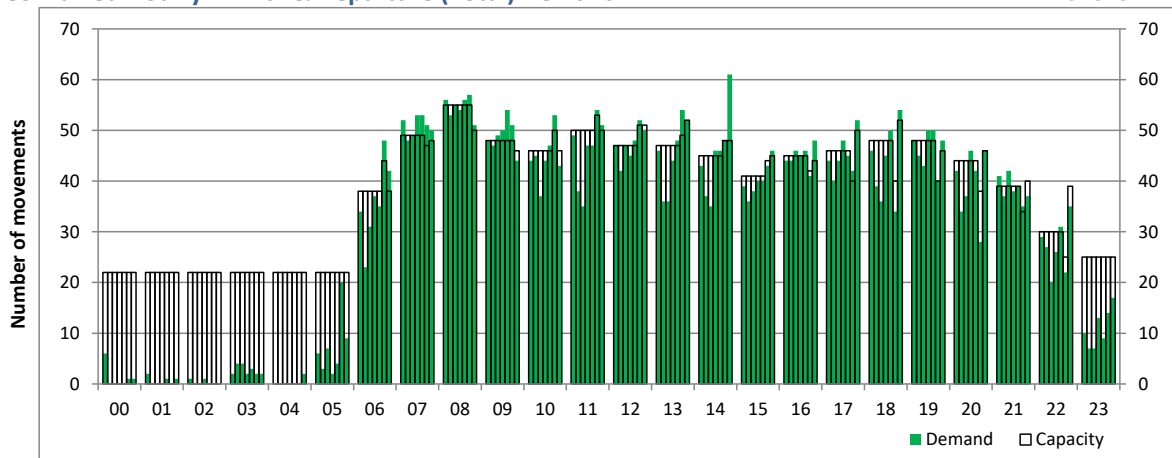
Time: UTC



Hour of day (24 hour format)

Combined Hourly Arrival & Departure (Total) Demand

Time: UTC



Hour of day (24 hour format)

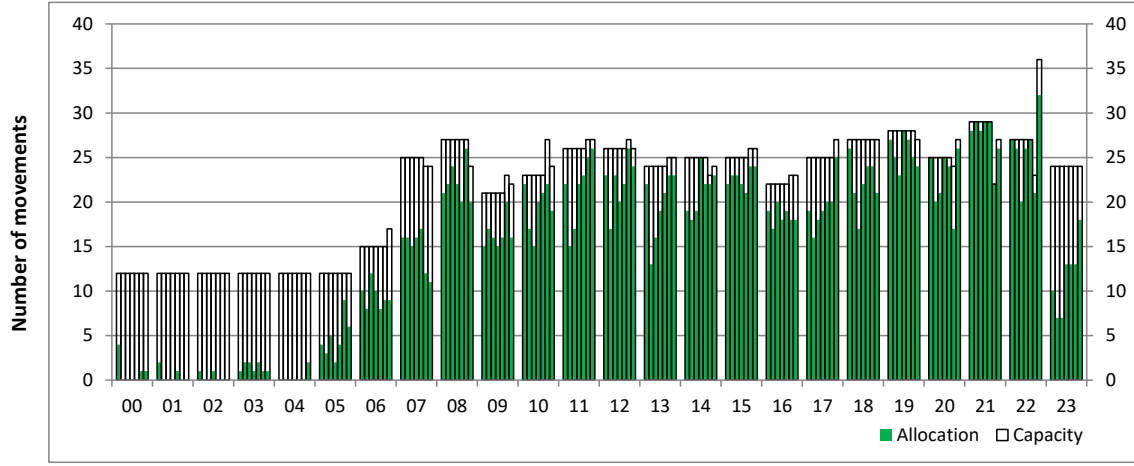
Peak Week - Hourly Runway Allocation

Schedule: W19 Start



Hourly Arrival Allocation

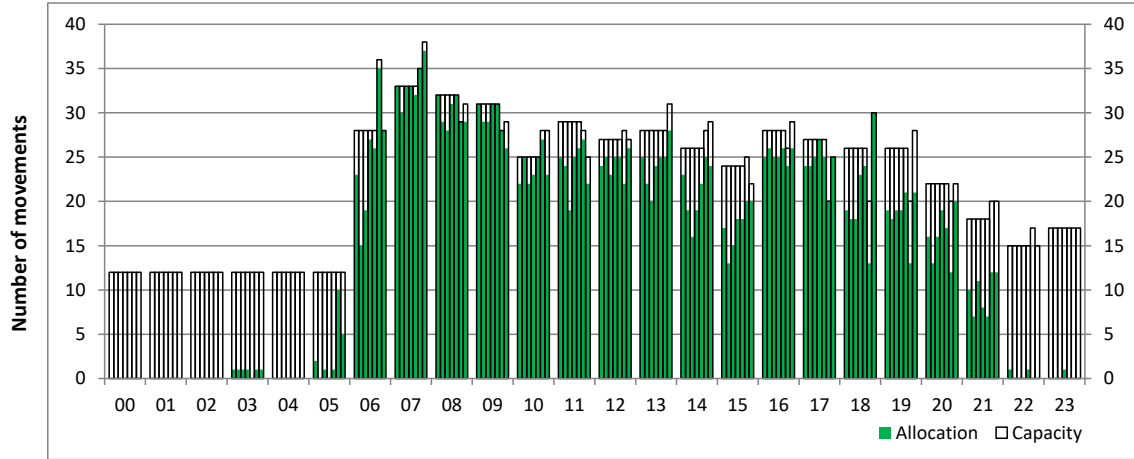
Time: UTC



Hour of day (24 hour format)

Hourly Departure Allocation

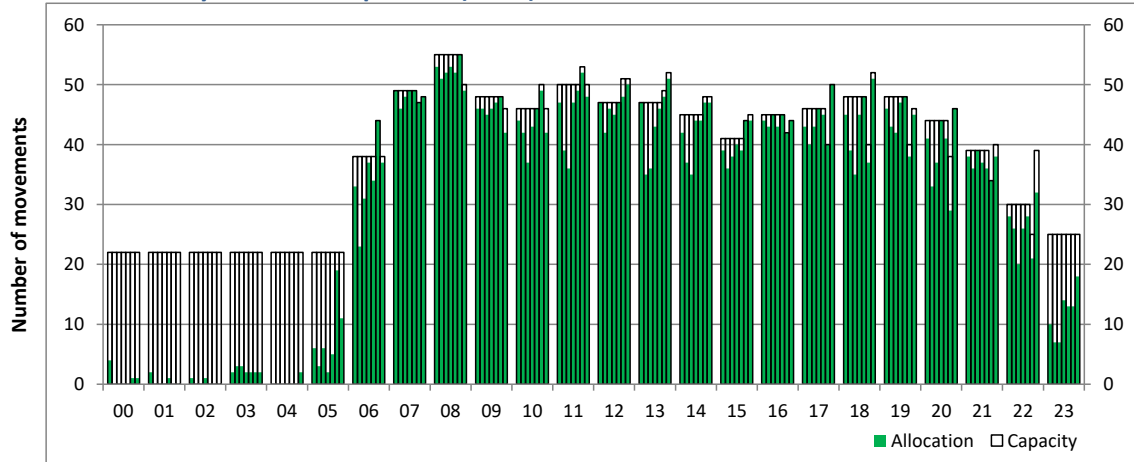
Time: UTC



Hour of day (24 hour format)

Combined Hourly Arrival & Departure (Total) Allocation

Time: UTC



Hour of day (24 hour format)

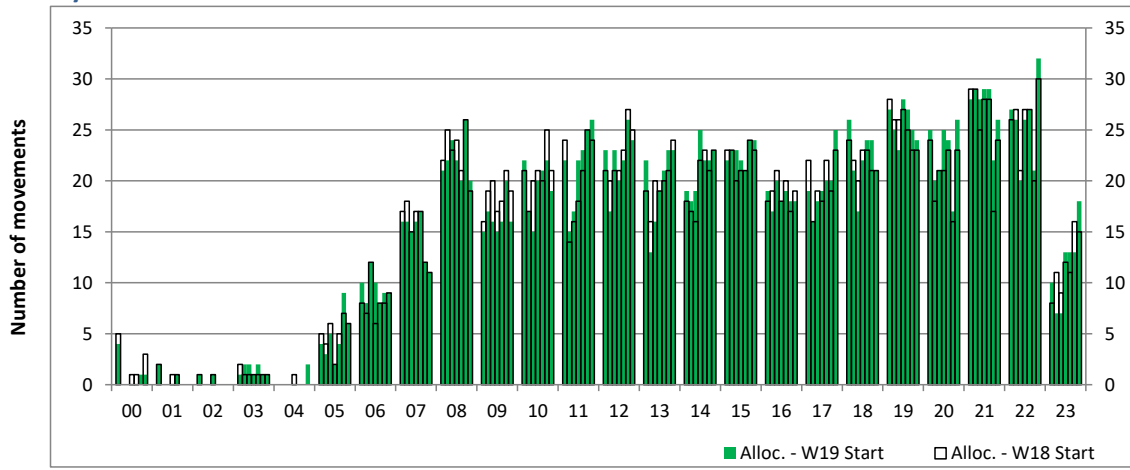
Peak Week - Runway Allocation Comparison

Comparison of W19 Start vs. W18 Start



Hourly Arrival Allocation

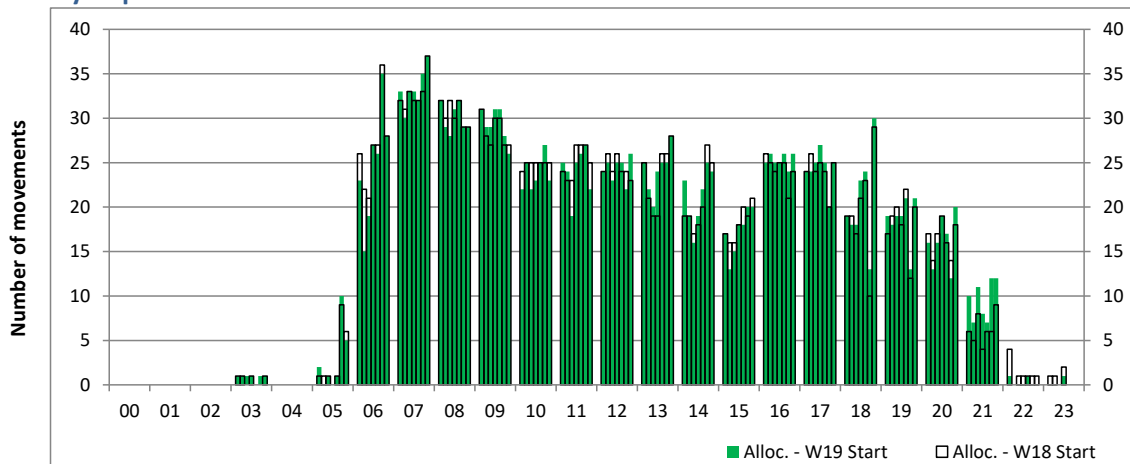
Time: UTC



Hour of day (24 hour format)

Hourly Departure Allocation

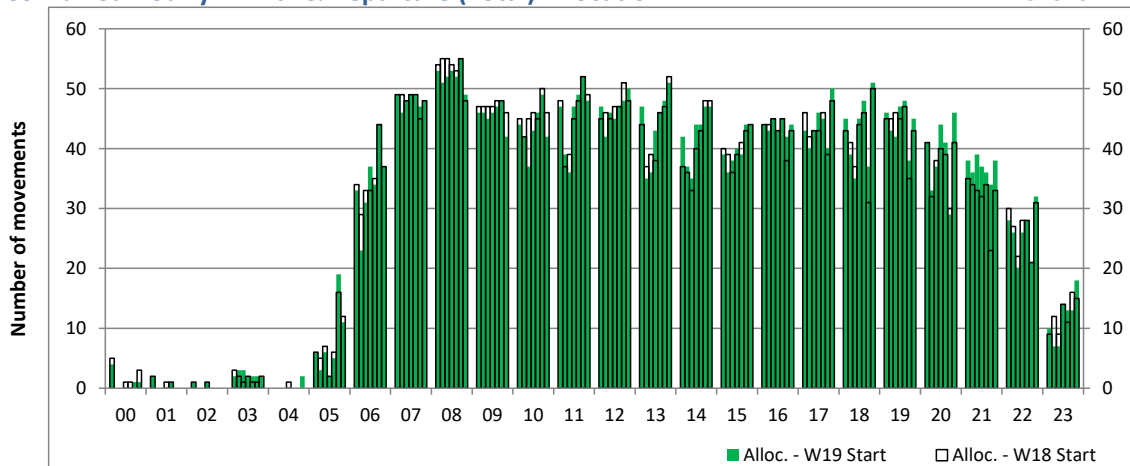
Time: UTC



Hour of day (24 hour format)

Combined Hourly Arrival & Departure (Total) Allocation

Time: UTC



Hour of day (24 hour format)

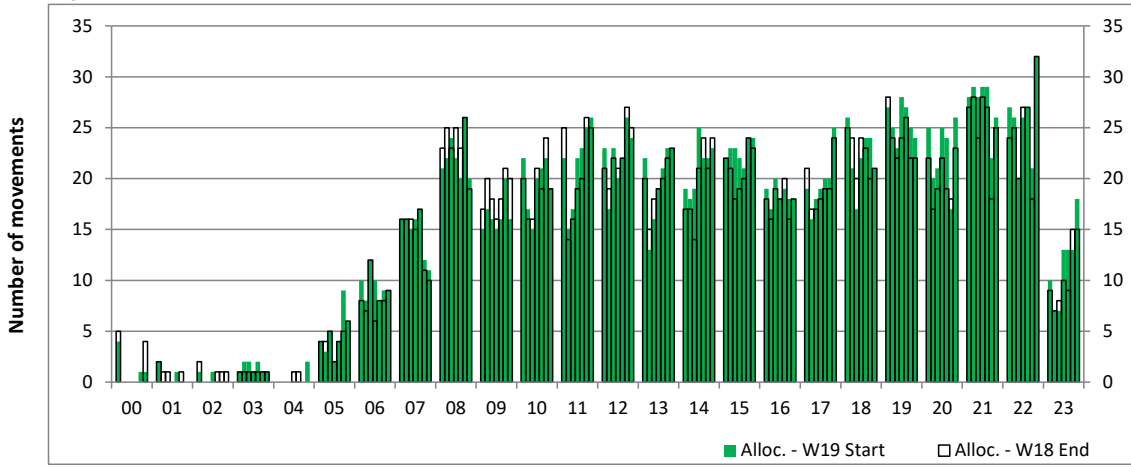
Peak Week - Runway Allocation Comparison

Comparison of W19 Start vs. W18 End



Hourly Arrival Allocation

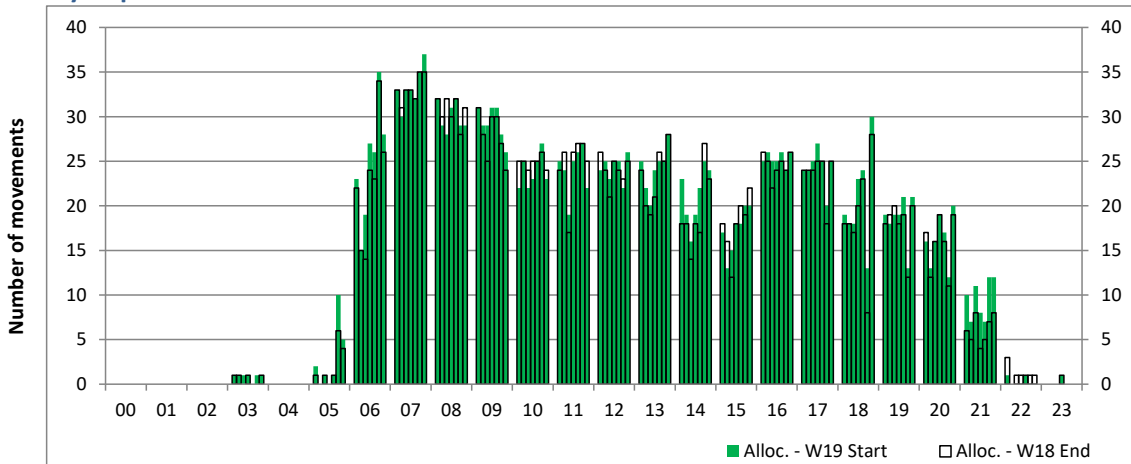
Time: UTC



Hour of day (24 hour format)

Hourly Departure Allocation

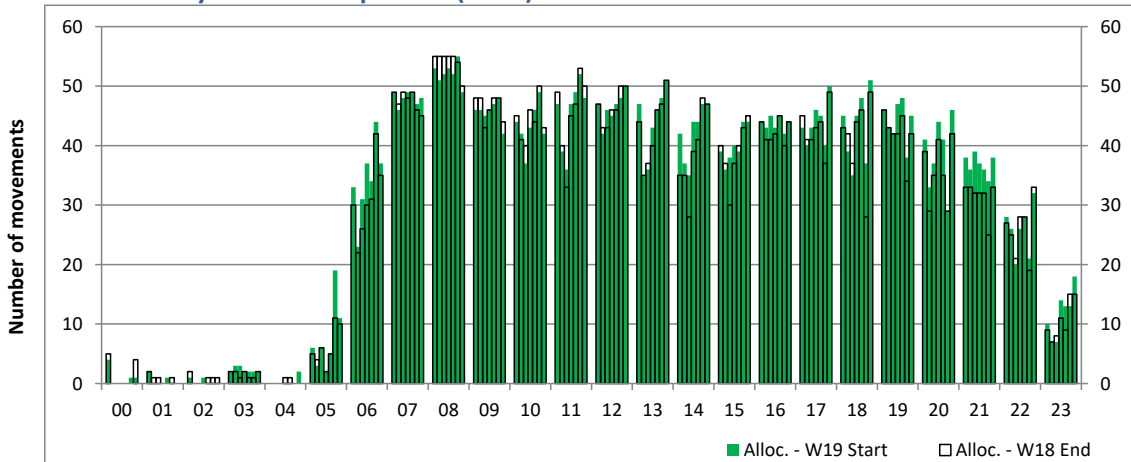
Time: UTC



Hour of day (24 hour format)

Combined Hourly Arrival & Departure (Total) Allocation

Time: UTC



Hour of day (24 hour format)

Peak Week - Passengers Histogram

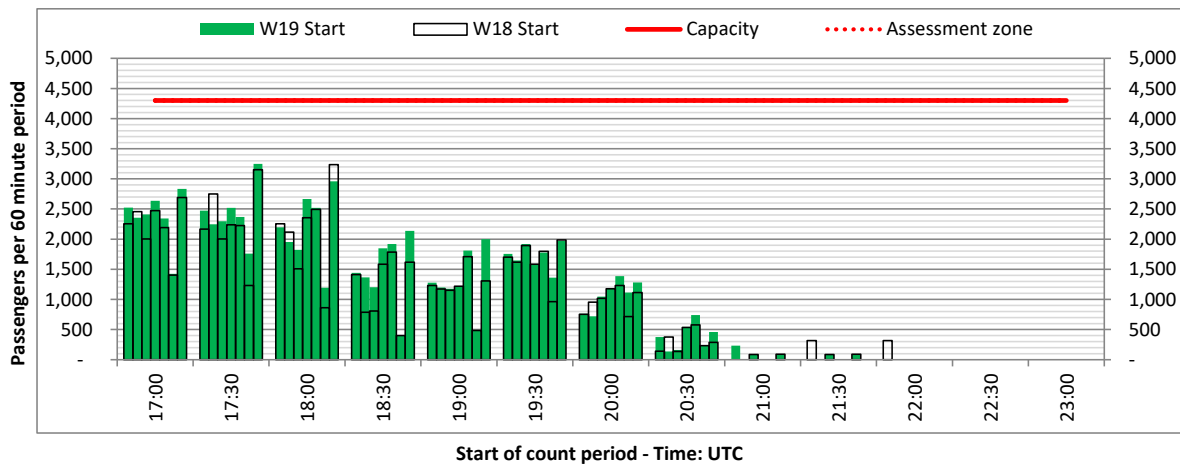
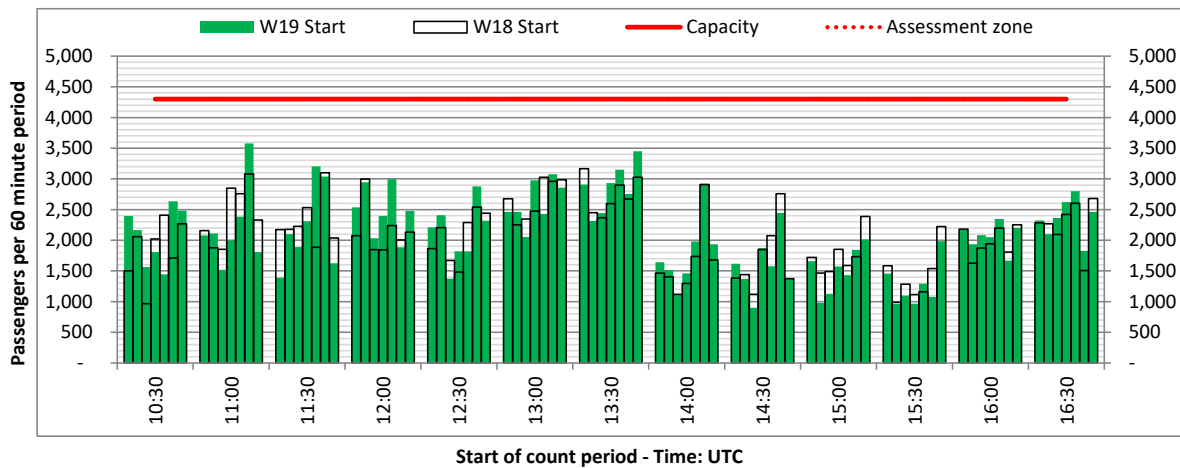
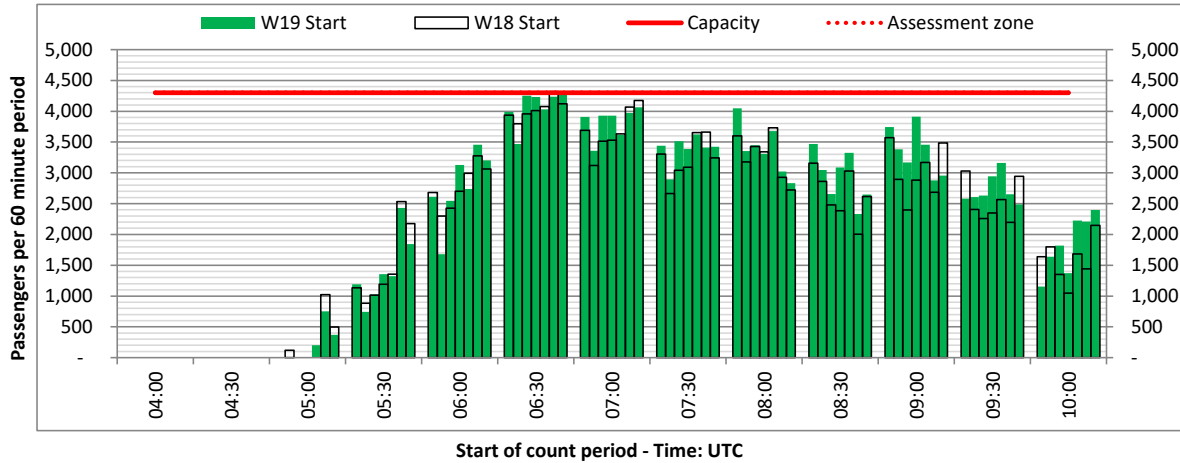
DEPARTURE - 60 minute count rolling every 30 mins (T60/30)



North Terminal

Operators: All Operators

Days: 1234567



Peak Week - Passengers Histogram

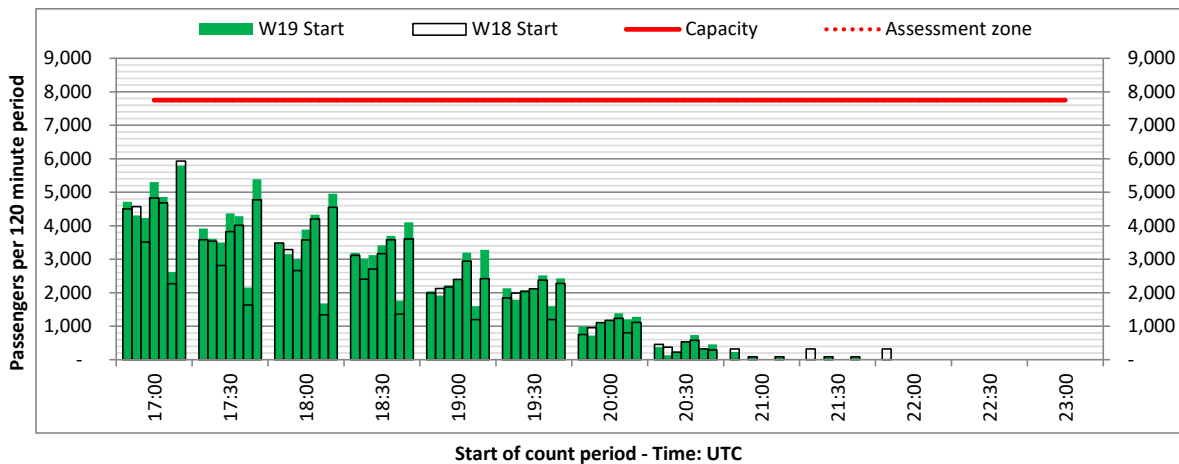
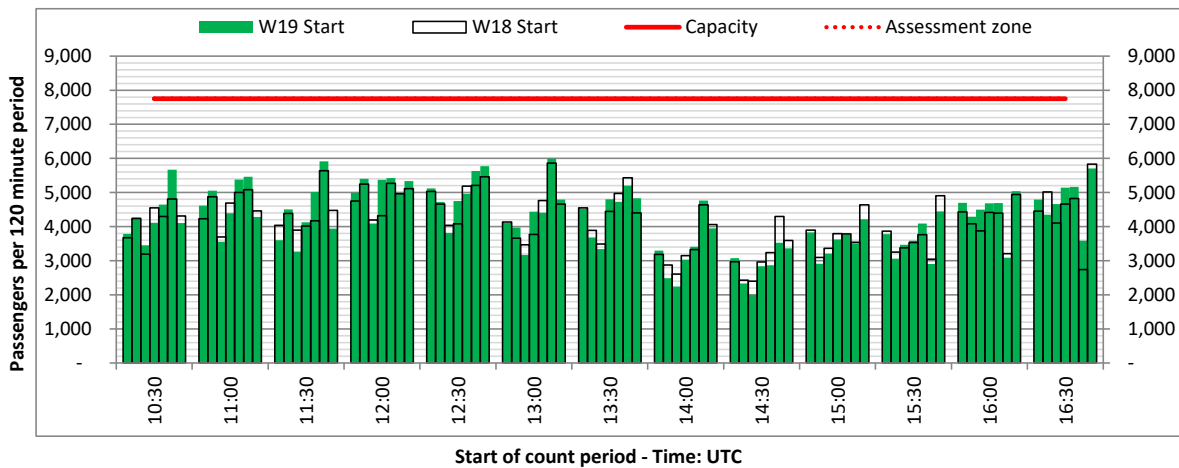
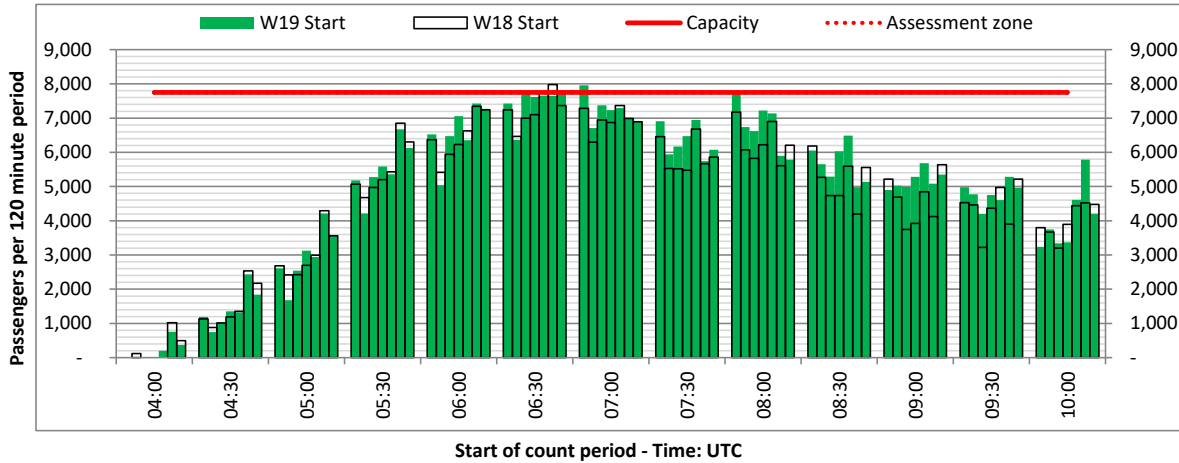
DEPARTURE - 120 minute count rolling every 30 mins (T120/30)



North Terminal

Operators: All Operators

Days: 1234567



Peak Week - Passengers Histogram

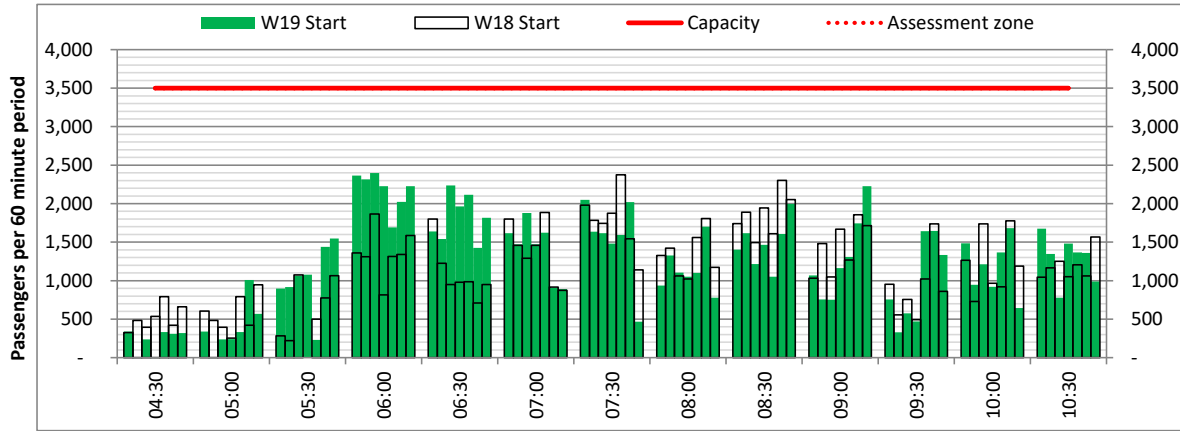
ARRIVAL - 60 minute count rolling every 30 mins (T60/30)



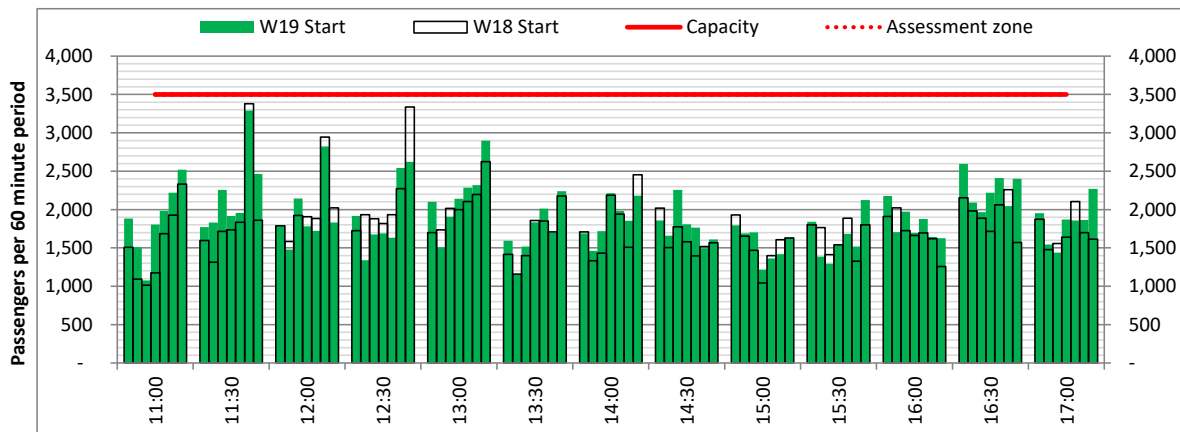
North Terminal (International)

Operators: All Operators

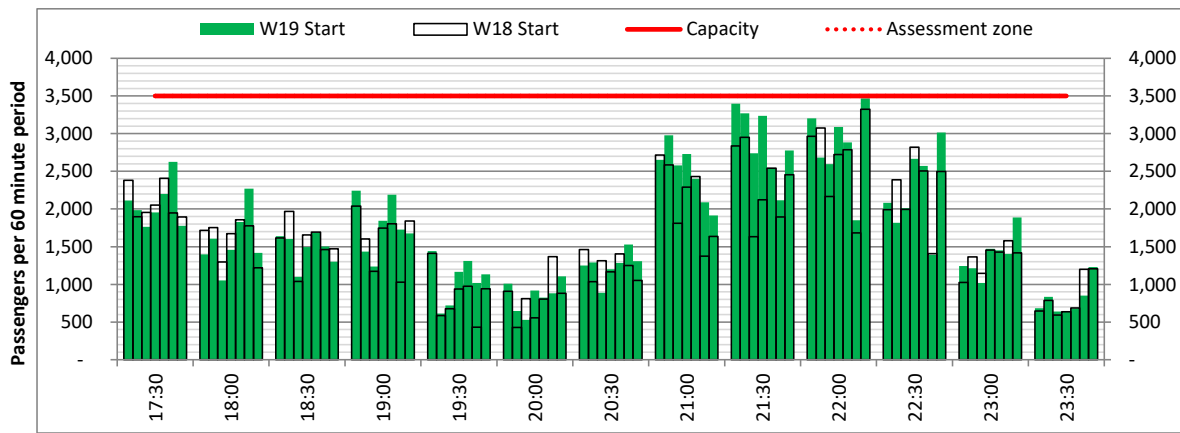
Days: 1234567



Start of count period - Time: UTC



Start of count period - Time: UTC



Start of count period - Time: UTC

Peak Week - Passengers Histogram

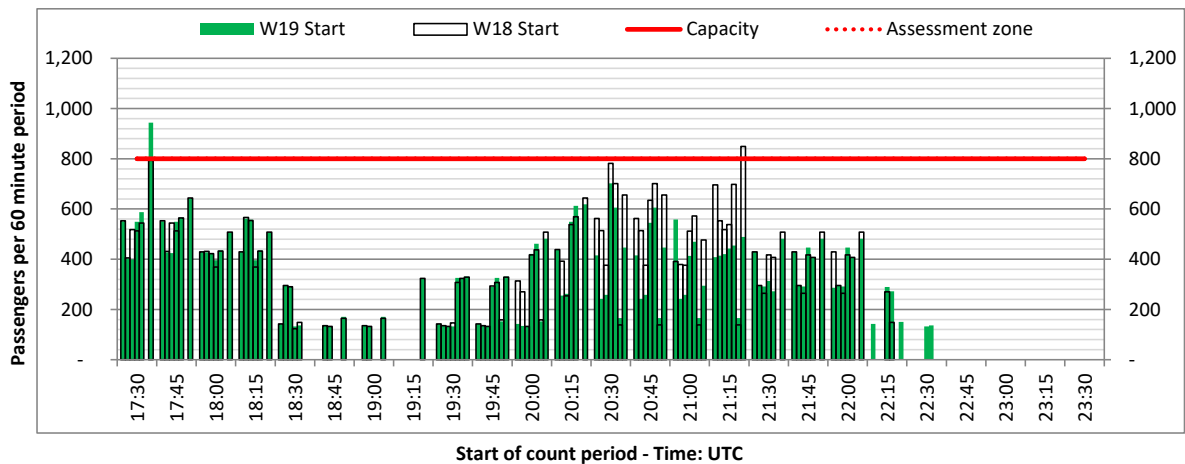
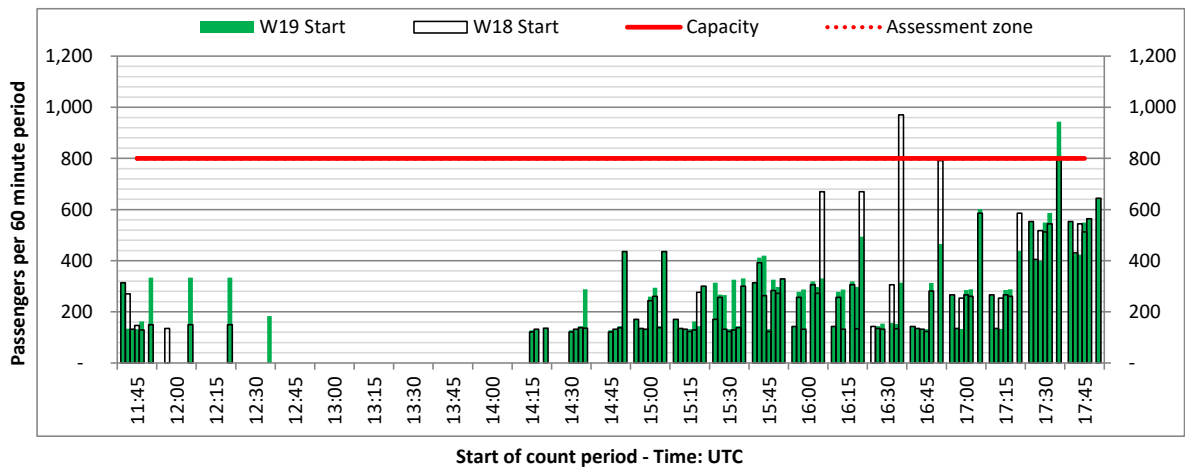
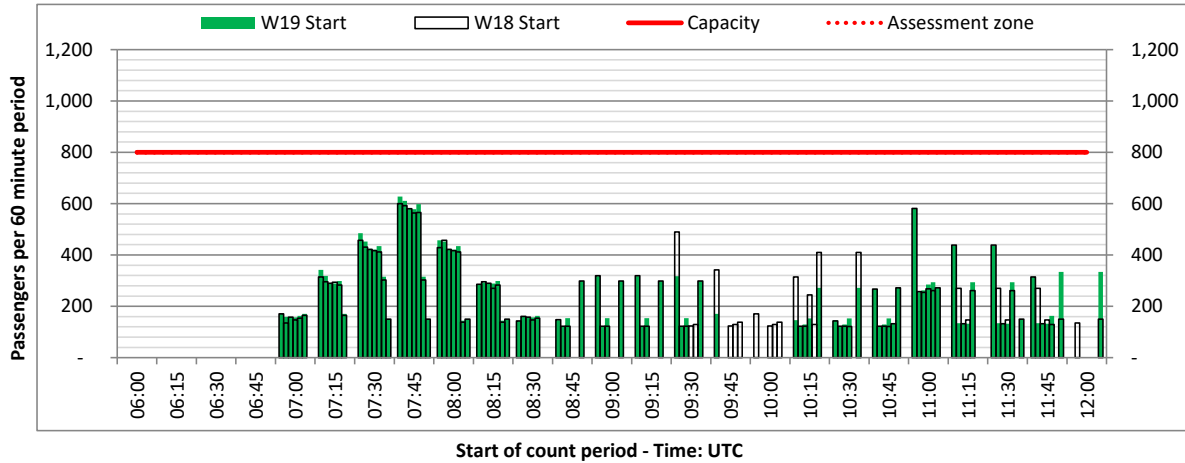
ARRIVAL - 60 minute count rolling every 15 mins (T60/15)



North Terminal (Domestic)

Operators: All Operators

Days: 1234567



Peak Week - Passengers Histogram

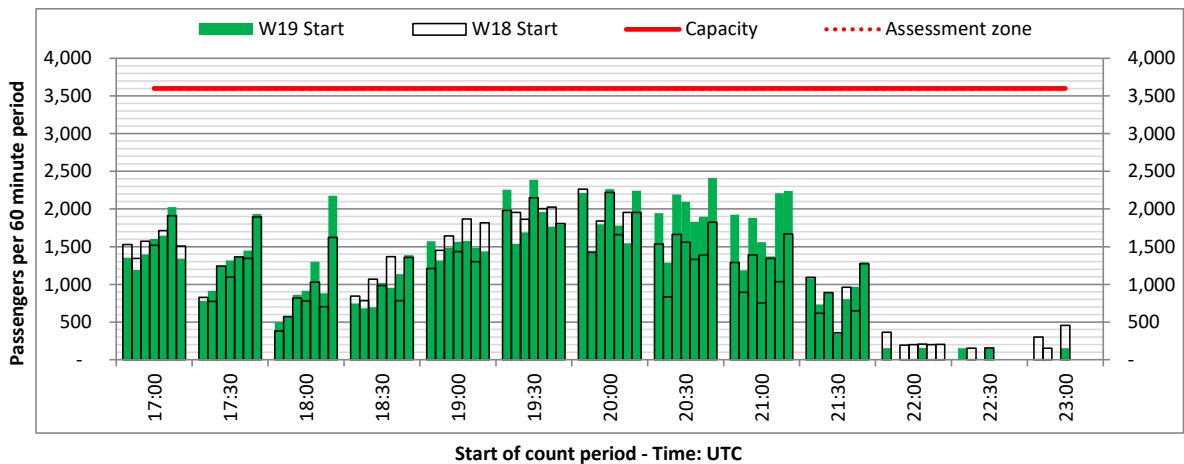
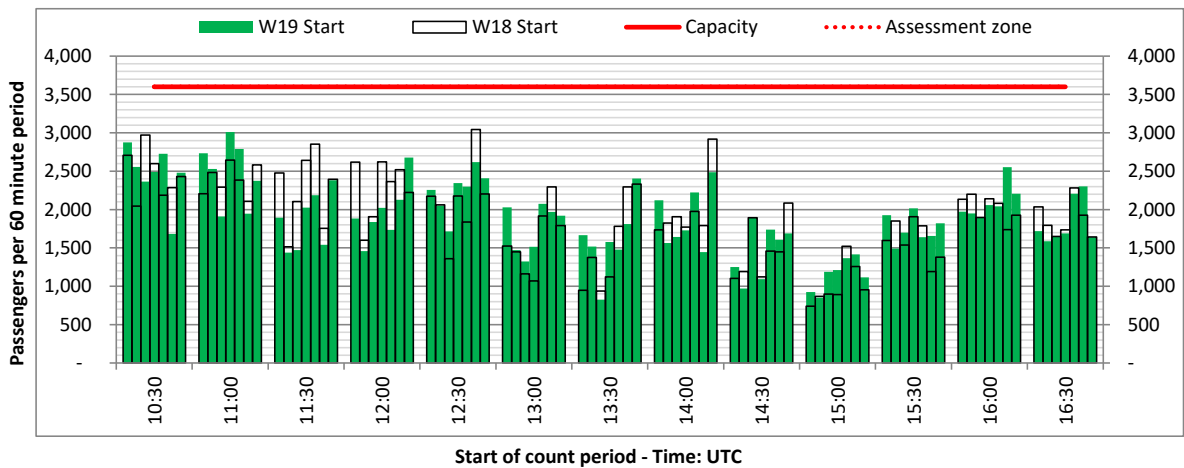
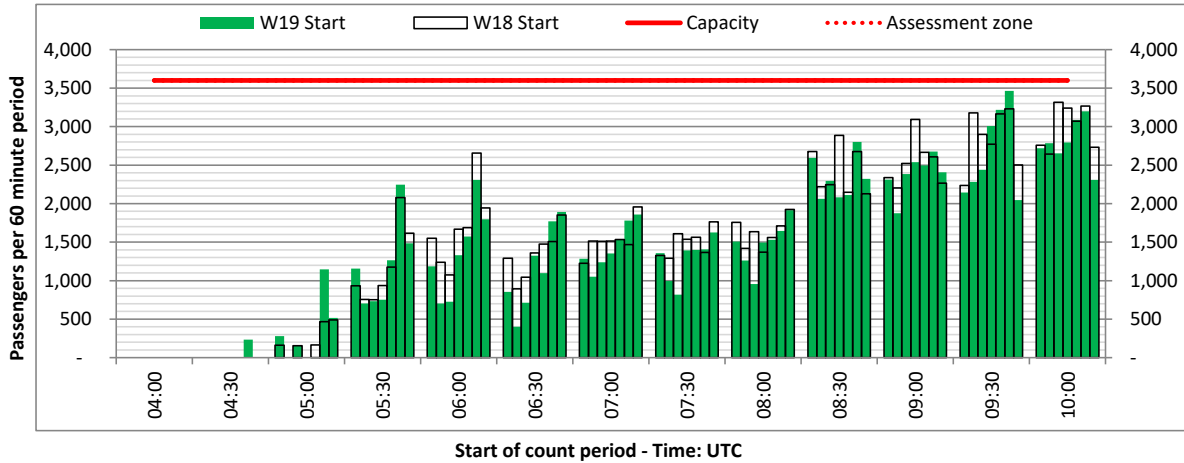
DEPARTURE - 60 minute count rolling every 30 mins (T60/30)



South Terminal

Operators: All Operators

Days: 1234567



Peak Week - Passengers Histogram

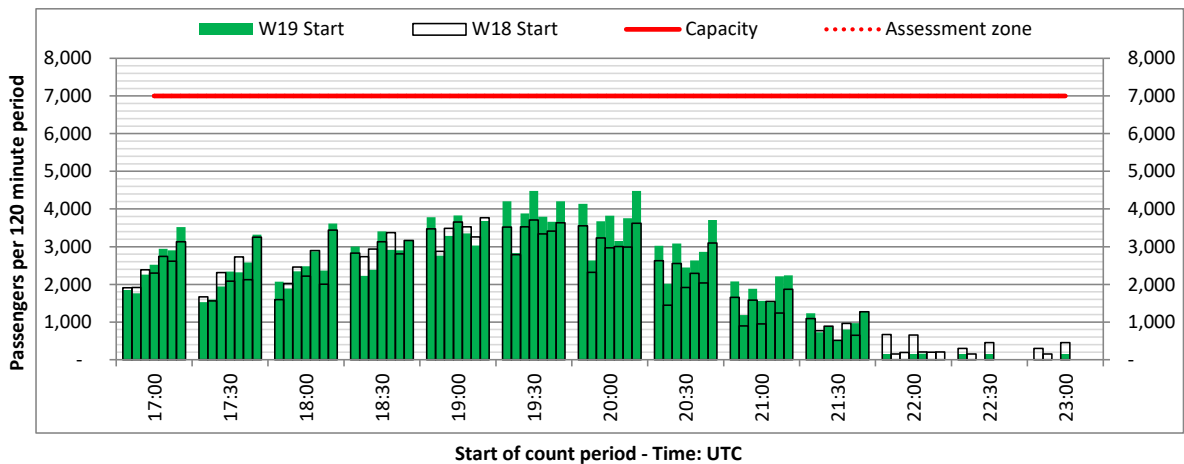
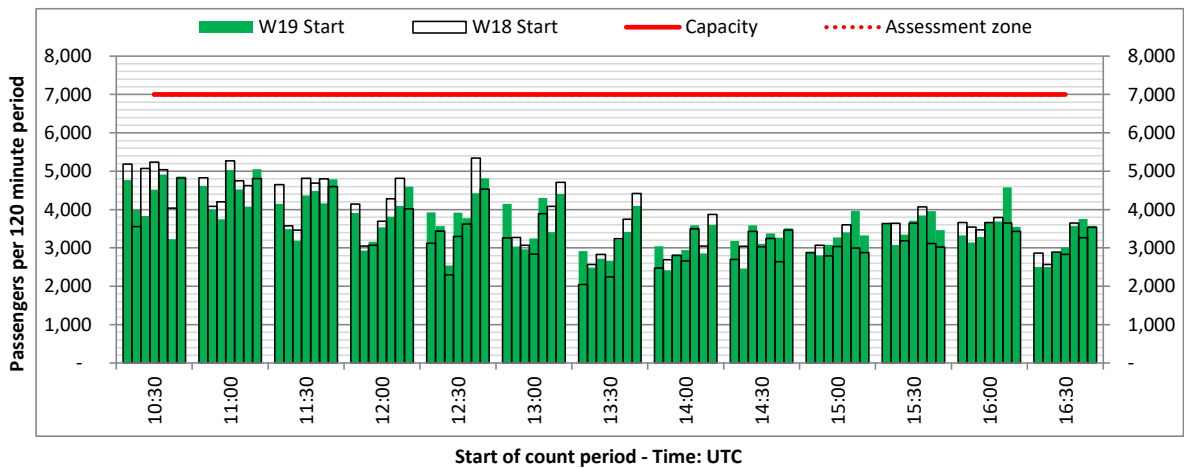
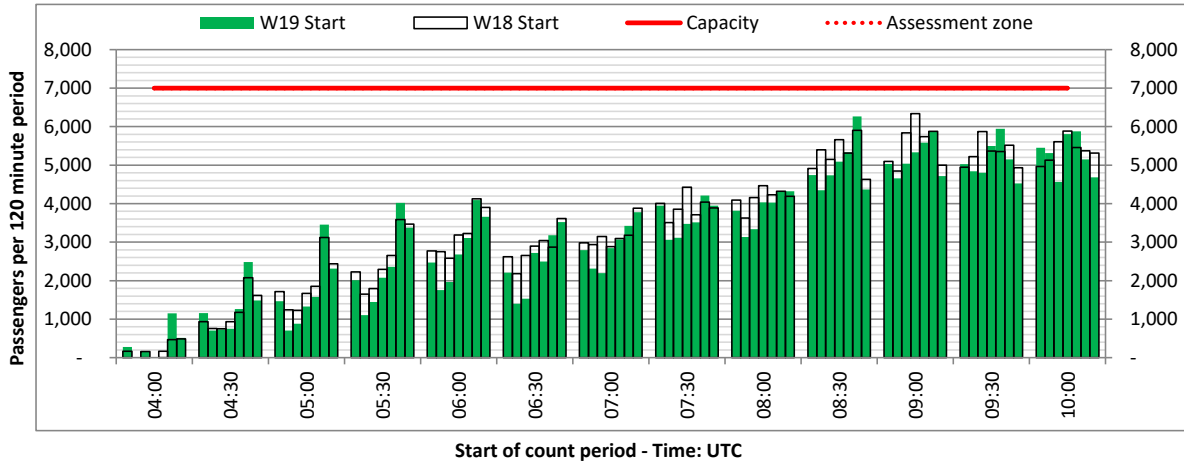
DEPARTURE - 120 minute count rolling every 30 mins (T120/30)



South Terminal

Operators: All Operators

Days: 1234567



Peak Week - Passengers Histogram

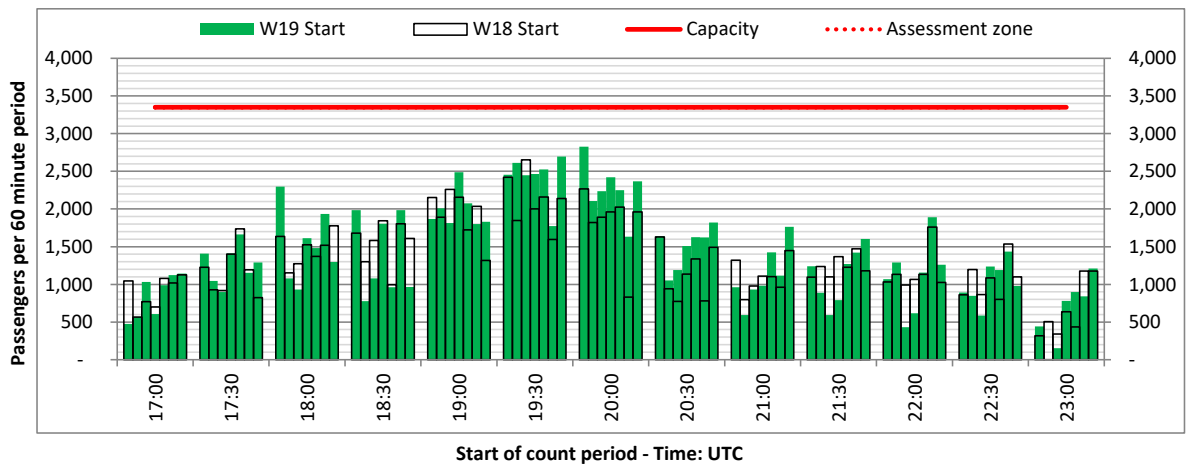
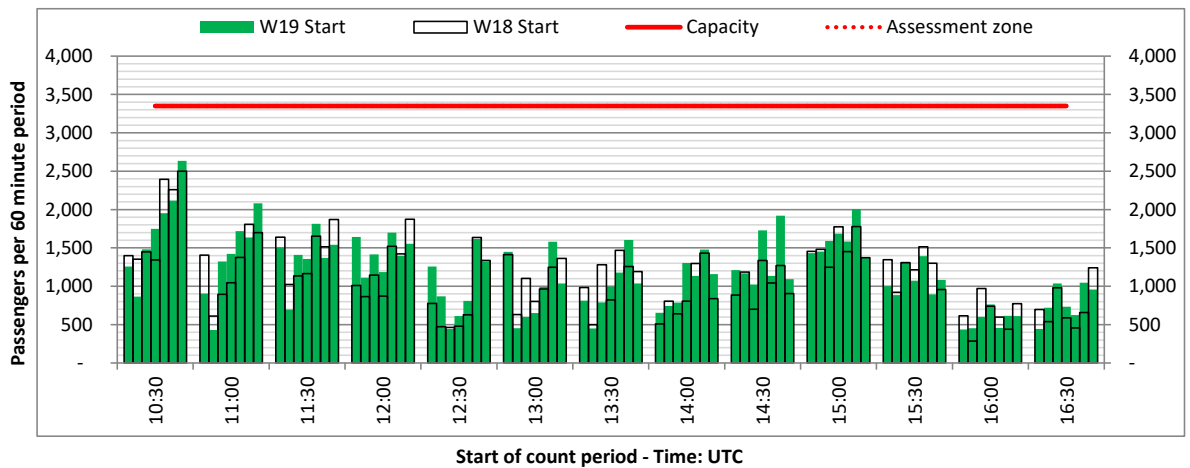
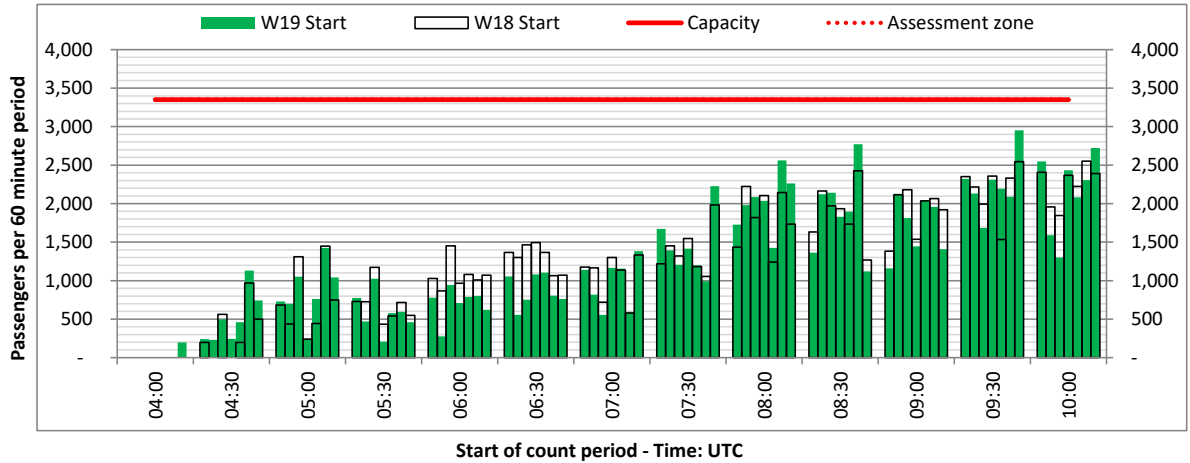
ARRIVAL - 60 minute count rolling every 30 mins (T60/30)



South Terminal (International)

Operators: All Operators

Days: 1234567



Peak Week - Passengers Histogram

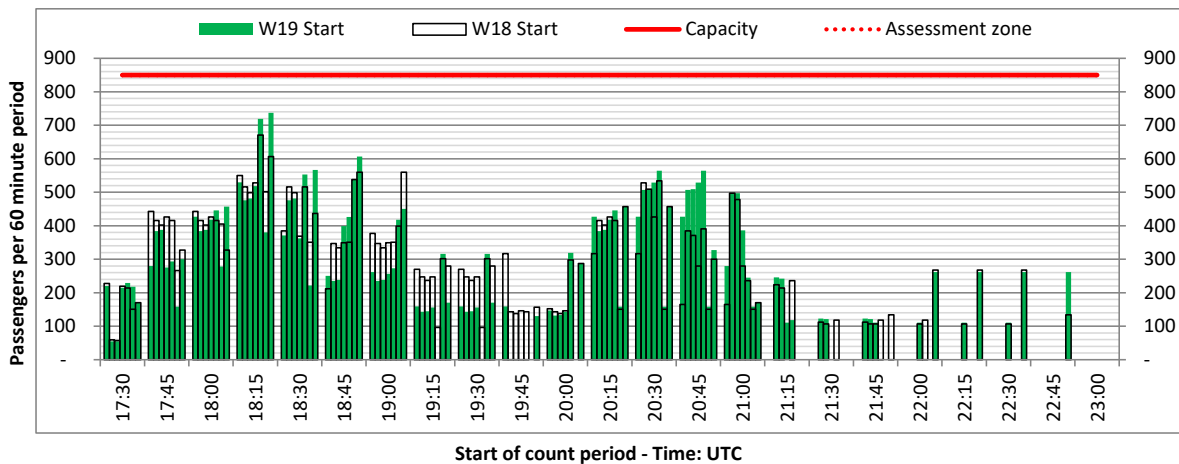
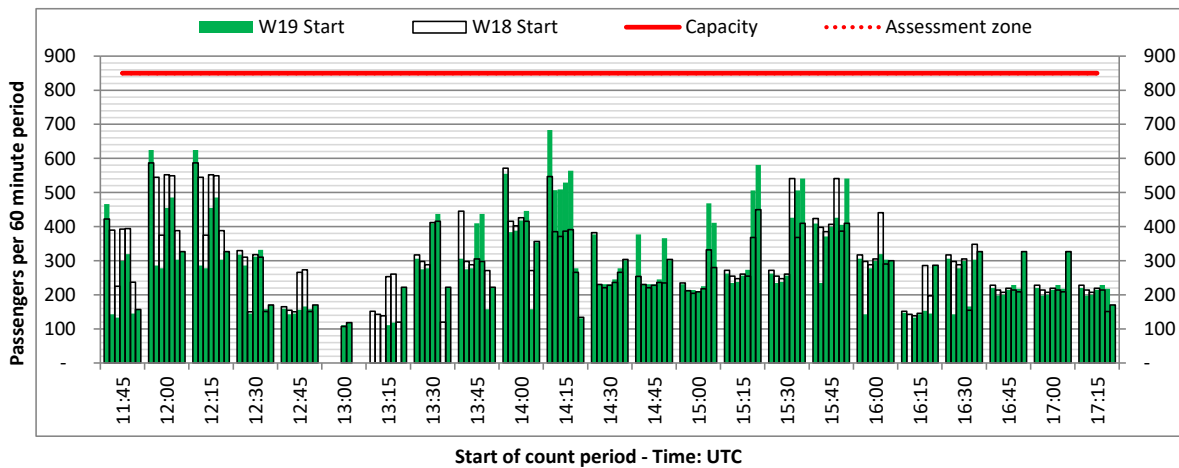
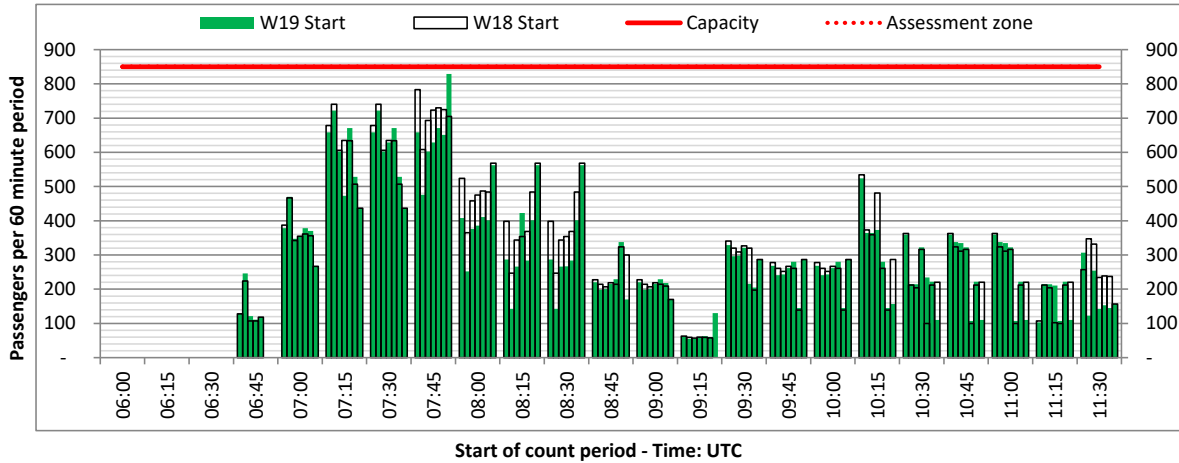
ARRIVAL - 60 minute count rolling every 15 mins (T60/15)



South Terminal (Domestic)

Operators: All Operators

Days: 1234567



Air Transport Movement (ATM)	Any aircraft movement which is either a scheduled or chartered passenger or cargo flight.
Common Travel Area (CTA)	Origin or Destination is in Republic of Ireland or the Channel Islands.
Demand	Unconstrained demand before any schedule adjustments have been made.
"Fill-in"	These are gaps in a historic series of slots which the carrier requests to "Fill-in" at Initial Submissions - Fill-ins will be recognisably part of the historic series and will have the same flight details to qualify as a "Fill-in".
Hist (SHL)	Snapshot of historic schedule rolled over from end of the previous equivalent season - as advised to airlines in the SHLs.
ICAO Size A	Aircraft with wingspan between 0.00m - 14.99m.
ICAO Size B	Aircraft with wingspan between 15.00m - 23.99m.
ICAO Size C	Aircraft with wingspan between 24.00m - 35.99m.
ICAO Size D	Aircraft with wingspan between 36.00m - 51.99m.
ICAO Size E	Aircraft with wingspan between 52.00m - 64.99m.
ICAO Size F	Aircraft with wingspan between 65.00m - 80.00m.
Init Coord	Snapshot of schedule immediately after Initial Coordination is completed - as advised to airlines in the SALs.
Passenger Air Transport Movement (PATM)	Any aircraft movement which is either a scheduled or chartered passenger flight.
Start	Snapshot of schedule shortly before the start of the scheduling season (exact date given below where used).
Time: Local	Times shown are in LOCAL time for the airport/scheduling season.
Time: UTC	Times shown are in Universal Time Constant (UTC).

Data snapshot descriptions

W18 Start	W18 schedule as cleared on Tue 23-Oct-18.
W18 End	W18 schedule as cleared on Mon 05-Mar-18.
W19 Start	W19 schedule as cleared on Mon 21-Oct-19.
Peak Week	Peak week for W18 is Mon 17-Dec-18 to Sun 23-Dec-18. Peak week for W19 is Mon 16-Dec-19 to Sun 22-Dec-19.

For ACL use

	Airport-Season-Branch-Resource	From date	To date	Time
Full Season Rep 1	LGW-W18-SOS Report-Standard	Sun 28-Oct-2018	Sat 30-Mar-2019	UTC
Full Season Rep 2	LGW-W18-Live-Standard	Sun 28-Oct-2018	Sat 30-Mar-2019	UTC
Full Season Rep 3	LGW-W19-SOS Report-Standard	Sun 27-Oct-2019	Sat 28-Mar-2020	UTC
	Airport-Season-Branch-Resource	From date	To date	Time
Peak Week Rep 1	LGW-W18-SOS Report-Standard	Mon 17-Dec-2018	Sun 23-Dec-2018	UTC
Peak Week Rep 2	LGW-W18-Live-Standard	Mon 18-Feb-2019	Sun 24-Feb-2019	UTC
Peak Week Rep 3	LGW-W19-SOS Report-Standard	Mon 16-Dec-2019	Sun 22-Dec-2019	UTC