

Start of Season Report

Report Date: Wed 23-Oct-2019

Headlines

	W19 Start	vs. W18 Start	vs. W18 End
Total Air Transport Movements (Passenger & Freight)	68578	▼ -2.3%	▼ -1.0%
Total Passenger Air Transport Movements	68226	▼ -2.4%	▼ -1.0%
Total Passenger Air Transport Movement Seats	11863320	▼ -2.2%	▼ -0.9%
Average Seats per Passenger Air Transport Movement	173.88	▲ 0.1%	▲ 0.2%
Percentage of allocated slots cleared as requested (OK)	99%		

Contents

Page	Content
2	Runway Scheduling Limits
3	ATM Allocation by Operator (Full season and Peak Week Comparison)
4	Significant Route Changes
5	Full Season - ATM Analysis
6	Full Season - PATM Seats Analysis
7	Full Season - Aircraft Size Analysis
8	Full Season - Seasonality
9	Peak Week - Hourly Runway Allocation
10	Peak Week - Hourly Runway Allocation Comparison (W19 Start vs. W18 End)
11	Peak Week Histogram - Departure Passengers (T120/15) - T1 - All Operators
12	Peak Week Histogram - Departure Passengers (T60/15) - T1 - All Operators
13	Peak Week Histogram - Arrival Passengers (T60/15) - T1 - All Operators
14	Peak Week Histogram - Departure Passengers (T120/15) - T2 - All Operators
15	Peak Week Histogram - Departure Passengers (T60/15) - T2 - All Operators
16	Peak Week Histogram - Arrival Passengers (T60/15) - T2 - All Operators
17	Peak Week Histogram - Departure Passengers (T120/15) - T3 - All Operators
18	Peak Week Histogram - Departure Passengers (T60/15) - T3 - All Operators
19	Peak Week Histogram - Arrival Passengers (T60/15) - T3 - All Operators
20	Glossary

W18 scheduling season runs from Sun 28-Oct-2018 to Sat 30-Mar-2019 (154 days).

W19 scheduling season runs from Sun 27-Oct-2019 to Sat 28-Mar-2020 (154 days).

Disclaimer

No warranty whether expressed or implied as to the completeness, accuracy, fitness for purpose, or satisfactory quality is given by ACL regarding the information in this report, which is provided by third parties. Accordingly, ACL excludes all liability with regard to such data.

The contents of this report may not be reproduced without the written consent of ACL.

Runway Scheduling Limits



Declared Hourly Movement Capacity

W18 Arrivals								Change: W18 to W19								W19 Arrivals							
Hour	Mon	Tue	Wed	Thu	Fri	Sat	Sun	Hour	Mon	Tue	Wed	Thu	Fri	Sat	Sun	Hour	Mon	Tue	Wed	Thu	Fri	Sat	Sun
UTC	1	2	3	4	5	6	7	UTC	1	2	3	4	5	6	7	UTC	1	2	3	4	5	6	7
00	15	15	15	15	15	15	15	00								00	15	15	15	15	15	15	15
01	15	15	15	15	15	15	15	01								01	15	15	15	15	15	15	15
02	15	15	15	15	15	15	15	02								02	15	15	15	15	15	15	15
03	15	15	15	15	15	15	15	03								03	15	15	15	15	15	15	15
04	15	15	15	15	15	15	15	04								04	15	15	15	15	15	15	15
05	15	15	15	15	15	15	15	05								05	15	15	15	15	15	15	15
06	30	30	30	30	30	30	28	06								06	30	30	30	30	30	30	28
07	30	30	30	30	30	30	28	07								07	30	30	30	30	30	30	28
08	30	30	30	30	30	30	28	08								08	30	30	30	30	30	30	28
09	30	30	30	30	30	30	28	09								09	30	30	30	30	30	30	28
10	30	30	30	30	30	30	28	10								10	30	30	30	30	30	30	28
11	28	28	28	28	28	28	28	11								11	28	28	28	28	28	28	28
12	28	28	28	28	28	28	28	12								12	28	28	28	28	28	28	28
13	28	28	28	28	28	28	28	13								13	28	28	28	28	28	28	28
14	28	28	28	28	28	28	28	14								14	28	28	28	28	28	28	28
15	28	28	28	28	28	28	28	15								15	28	28	28	28	28	28	28
16	30	30	30	30	30	28	30	16								16	30	30	30	30	30	28	30
17	30	30	30	30	30	28	30	17								17	30	30	30	30	30	28	30
18	30	30	30	30	30	28	30	18								18	30	30	30	30	30	28	30
19	30	30	30	30	30	28	30	19								19	30	30	30	30	30	28	30
20	28	28	28	28	28	28	28	20								20	28	28	28	28	28	28	28
21	28	28	28	28	28	28	28	21								21	28	28	28	28	28	28	28
22	22	22	22	22	22	22	22	22								22	22	22	22	22	22	22	22
23	20	20	20	20	20	20	20	23								23	20	20	20	20	20	20	20

W18 Departures								Change: W18 to W19								W19 Departures							
Hour	Mon	Tue	Wed	Thu	Fri	Sat	Sun	Hour	Mon	Tue	Wed	Thu	Fri	Sat	Sun	Hour	Mon	Tue	Wed	Thu	Fri	Sat	Sun
UTC	1	2	3	4	5	6	7	UTC	1	2	3	4	5	6	7	UTC	1	2	3	4	5	6	7
00	15	15	15	15	15	15	15	00								00	15	15	15	15	15	15	15
01	15	15	15	15	15	15	15	01								01	15	15	15	15	15	15	15
02	15	15	15	15	15	15	15	02								02	15	15	15	15	15	15	15
03	15	15	15	15	15	15	15	03								03	15	15	15	15	15	15	15
04	15	15	15	15	15	15	15	04								04	15	15	15	15	15	15	15
05	15	15	15	15	15	15	15	05								05	15	15	15	15	15	15	15
06	32	32	32	32	32	32	28	06								06	32	32	32	32	32	32	28
07	36	36	36	36	36	36	28	07								07	36	36	36	36	36	36	28
08	33	33	33	33	33	33	28	08								08	33	33	33	33	33	33	28
09	32	32	32	32	32	32	28	09								09	32	32	32	32	32	32	28
10	30	30	30	30	30	30	28	10								10	30	30	30	30	30	30	28
11	28	28	28	28	28	28	28	11								11	28	28	28	28	28	28	28
12	28	28	28	28	28	28	28	12								12	28	28	28	28	28	28	28
13	28	28	28	28	28	28	28	13								13	28	28	28	28	28	28	28
14	28	28	28	28	28	28	28	14								14	28	28	28	28	28	28	28
15	28	28	28	28	28	28	28	15								15	28	28	28	28	28	28	28
16	30	30	30	30	30	28	30	16								16	30	30	30	30	30	28	30
17	30	30	30	30	30	28	30	17								17	30	30	30	30	30	28	30
18	30	30	30	30	30	28	30	18								18	30	30	30	30	30	28	30
19	30	30	30	30	30	28	30	19								19	30	30	30	30	30	28	30
20	28	28	28	28	28	28	28	20								20	28	28	28	28	28	28	28
21	28	28	28	28	28	28	28	21								21	28	28	28	28	28	28	28
22	20	20	20	20	20	20	20	22								22	20	20	20	20	20	20	20
23	15	15	15	15	15	15	15	23								23	15	15	15	15	15	15	15

W18 Totals								Change: W18 to W19								W19 Totals							
Hour	Mon	Tue	Wed	Thu	Fri	Sat	Sun	Hour	Mon	Tue	Wed	Thu	Fri	Sat	Sun	Hour	Mon	Tue	Wed	Thu	Fri	Sat	Sun
UTC	1	2	3	4	5	6	7	UTC	1	2	3	4	5	6	7	UTC	1	2	3	4	5	6	7
00	15	15	15	15	15	15	15	00								00	15	15	15	15	15	15	15
01	15	15	15	15	15	15	15	01								01	15	15	15	15	15	15	15
02	15	15	15	15	15	15	15	02								02	15	15	15	15	15	15	15
03	15	15	15	15	15	15	15	03								03	15	15	15	15	15	15	15
04	15	15	15	15	15	15	15	04								04	15	15	15	15	15	15	15
05	21	21	21	21	21	21	21	05								05	21	21	21	21	21	21	21
06	51	51	51	51	51	51	44	06								06	51	51	51	51	51	51	44
07	56	56	56	56	56	56	44	07								07	56	56	56	56	56	56	44
08	56	56	56	56	56	56	44	08								08	56	56	56	56	56	56	44
09	53	53	53	53	53	53	44	09								09	53	53	53	53	53	53	44
10	51	51	51	51	51	51	44	10								10	51	51	51	51	51	51	44
11	44	44	44	44	44	44	44	11								11	44	44	44	44	44	44	44
12	44	44	44	44	44	44	44	12								12	44	44	44	44	44	44	44
13	44	44	44	44	44	44	44	13								13	44	44	44	44	44	44	44
14	44	44	44	44	44	44	44	14								14	44	44	44	44	44	44	44
15	44	44	44	44	44	44	44	15								15	44	44	44	44	44	44	44
16	54	54	54	54	54	44	54	16								16	54	54	54	54	54	44	54
17	54	54	54	54	54	44	54	17								17	54	54	54	54	54	44	54
18	54	54	54	54	54	44	54	18								18	54	54	54	54	54	44	54
19	54	54	54	54	54	44	54	19								19	54	54	54	54	54	44	54
20	44	44	44	44	44	44	44	20								20	44	44	44	44	44	44	44
21	44	44	44	44	44	44	44	21								21	44	44	44	44	44	44	44
22	31	31	31	31	31	31	31	22								22	31	31	31	31	31	31	31
23	24	24	24	24	24	24	24	23								23	24	24	24	24	24	24	24

Air Transport Movement Allocation by Operator

Comparison between W18 End vs. W19 Start



Operator	FULL SEASON ALLOCATION							PEAK WEEK ALLOCATION								
	W18 ATMs	W19 ATMs	+/- change	W19 Rank	W18 Seats	W19 Seats	+/- change	W19 Rank	W18 ATMs	W19 ATMs	+/- change	W19 Rank	W18 Seats	W19 Seats	+/- change	W19 Rank
Aegean Airlines	97	83	-14	46	13,647	13,311	-336	46	4	4	0	45	522	696	174	45
Aer Lingus	2,379	1,150	-1,229	12	286,190	200,032	-86,158	14	112	54	-58	12	13,572	9,396	-4,176	14
Air Arabia Maroc	84	-	-84	55	14,616	-	-14,616	54	4	-	-4	52	696	-	-696	51
Air France	913	924	11	14	139,235	147,314	8,079	17	42	42	0	14	6,640	6,692	52	17
Air Transat	90	88	-2	44	22,664	25,116	2,452	40	4	4	0	45	1,000	1,164	164	41
American Airlines	289	288	-1	36	71,307	63,892	-7,415	30	12	12	0	36	2,964	2,808	-156	29
Aurigny Air Services	583	580	-3	24	39,816	41,860	2,044	36	28	28	0	20	1,968	2,016	48	36
Austrian Airlines	238	247	9	38	31,328	32,312	984	38	11	12	1	36	1,480	1,600	120	39
Biman Bangladesh	-	72	72	48	-	19,512	19,512	43	-	6	6	42	-	1,626	1,626	38
British Airways	2,246	2,021	-225	7	397,307	329,662	-67,645	8	112	98	-14	7	19,824	15,928	-3,896	8
Brussels Airlines	818	826	8	18	126,492	136,790	10,298	18	38	38	0	18	5,826	6,372	546	18
Cathay Pacific	284	294	10	35	88,376	94,524	6,148	22	12	12	0	36	3,360	4,008	648	23
EasyJet	10,328	10,543	215	3	1,825,010	1,857,918	32,908	2	491	518	27	2	87,372	91,518	4,146	2
EasyJet Europe	2	274	272	37	360	49,104	48,744	35	-	14	14	29	-	2,532	2,532	32
EasyJet Switzerland	32	42	10	52	4,992	6,552	1,560	51	2	2	0	49	312	312	0	49
El Al Israel Airlines	-	88	88	44	-	14,626	14,626	44	-	4	4	45	-	664	664	46
Emirates	924	924	0	14	528,926	538,076	9,150	6	42	42	0	14	24,074	24,458	384	6
Enter Air	18	80	62	47	2,836	13,860	11,024	45	1	8	7	40	189	1,428	1,239	40
Ethiopian Airlines	128	176	48	40	17,640	25,206	7,566	39	8	8	0	40	1,080	1,122	42	42
Etihad Airways	617	616	-1	21	215,666	227,304	11,638	13	28	28	0	20	9,342	10,332	990	13
Eurowings	1,022	1,016	-6	13	153,096	155,424	2,328	16	48	46	-2	13	7,332	7,032	-300	16
Federal Express	335	352	17	29	-	-	0	54	16	16	0	28	-	-	0	51
Finnair	615	614	-1	23	86,010	119,926	33,916	19	28	28	0	20	3,184	5,488	2,304	19
Flybe	12,914	12,413	-501	1	1,046,421	996,374	-50,047	3	579	589	10	1	47,419	47,022	-397	3
FlyEgypt	-	14	14	53	-	2,604	2,604	52	-	-	0	52	-	-	0	51
Hainan Airlines	132	132	0	41	38,544	38,544	0	37	6	6	0	42	1,752	1,752	0	37
Iberia Express	88	128	40	42	15,444	23,040	7,596	41	4	6	2	42	702	1,080	378	43
Icelandair	284	304	20	34	52,492	56,100	3,608	32	12	14	2	29	2,196	2,562	366	31
Iraqi Airways	44	44	0	51	6,600	6,600	0	50	2	2	0	49	300	300	0	50
Jet Airways	196	-	-196	55	49,784	-	-49,784	54	10	-	-10	52	2,540	-	-2,540	51
Jet2.com	3,754	4,580	826	4	748,058	936,269	188,211	4	212	227	15	4	42,184	46,721	4,537	4
KLM Royal Dutch Airlines	1,482	1,638	156	8	265,170	286,572	21,402	11	67	80	13	9	11,984	13,764	1,780	12
Loganair	1,151	1,192	41	11	49,305	53,416	4,111	34	56	56	0	11	2,384	2,504	120	34
Lufthansa	2,278	2,460	182	6	374,607	418,580	43,973	7	105	118	13	6	16,927	20,070	3,143	7
Norwegian	348	398	50	26	64,848	74,028	9,180	26	16	18	2	26	2,982	3,348	366	26
Oman Air	308	308	0	31	82,236	82,236	0	25	14	14	0	29	3,738	3,738	0	24
Other/adhoc	142	56	-86	49	12,357	8,365	-3,992	49	4	-	-4	52	266	-	-266	51
Pegasus Airlines	2	335	333	30	378	63,631	63,253	31	-	14	14	29	-	2,643	2,643	30
PIA Pakistan International	394	396	2	27	154,178	155,628	1,450	15	18	18	0	26	6,908	7,074	166	15
Qatar Airways	792	924	132	14	248,152	321,658	73,506	10	36	42	6	14	11,762	15,092	3,330	9
Royal Air Maroc	96	96	0	43	10,800	12,006	1,206	47	4	4	0	45	456	546	90	47
Ryanair	10,721	11,262	541	2	2,026,269	2,128,518	102,249	1	488	498	10	3	92,232	94,122	1,890	1
SAS Scandinavian	1,346	1,578	232	9	226,382	275,674	49,292	12	70	84	14	8	11,794	14,582	2,788	11
Saudia	229	220	-9	39	72,842	65,560	-7,282	28	10	10	0	39	2,980	2,980	0	28
Singapore Airlines	440	440	0	25	111,320	111,320	0	21	20	20	0	25	5,060	5,060	0	21
Stobart Air	-	1,246	1,246	10	-	89,708	89,708	23	-	58	58	10	-	4,176	4,176	22
SUN-AIR	586	632	46	19	18,752	20,224	1,472	42	30	30	0	19	960	960	0	44
Swiss International	620	632	12	19	91,430	86,844	-4,586	24	28	28	0	20	3,954	3,676	-278	25
TAP Air Portugal	500	392	-108	28	81,920	66,136	-15,784	27	22	14	-8	29	3,536	2,400	-1,136	35
Thomas Cook (UK)	3,137	-	-3,137	55	757,938	-	-757,938	54	146	-	-146	52	33,980	-	-33,980	51
Titan Airways	54	50	-4	50	10,146	9,552	-594	48	4	2	-2	49	740	404	-336	48
TUI Airways	3,336	3,281	-55	5	763,666	799,535	35,869	5	155	148	-7	5	35,183	36,387	1,204	5
Turkish Airlines	618	616	-2	21	117,919	117,218	-701	20	28	28	0	20	5,470	5,320	-150	20
United Airlines	308	306	-2	33	52,052	65,484	13,432	29	14	14	0	29	2,366	2,996	630	27
Virgin Atlantic	661	897	236	17	297,563	323,775	26,212	9	29	40	11	17	12,439	14,798	2,359	10
Vueling	289	308	19	31	52,020	55,440	3,420	33	18	14	-4	29	3,240	2,520	-720	33
TOTAL	69,292	68,578	-714		11,965,107	11,863,320	-101,787		3,250	3,220	-30		559,171	555,789	-3,382	

Operators with 0 'ATMs' in both W18 End & W19 Start schedules are included in the table due to appearing in the W18 Start schedule (either with/without allocated slots).

Significant Route Changes

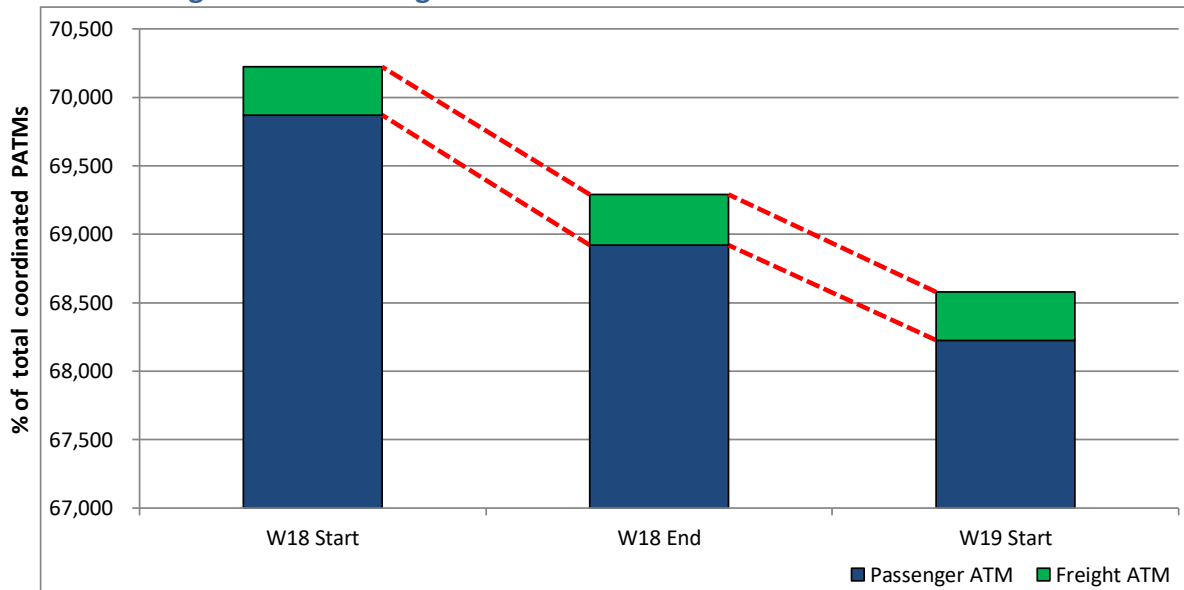


Operator	Category	Description of change from W18 schedule to W19 schedule
Air Arabia Maroc	CANCELLED	Twice weekly AGA that operated W18 will not operate W19.
American Airlines	CHANGE	Equipment change on PHL from B767-300 (209seats) to B787-8 (234seats) from 08Jan. W18 was A330-200.
Biman Bangladesh	NEW	New three per week DAC (Dhaka) via ZYL (Sylhet on return), B787-8 (271seats) 1800/2000z Tue, Thu & Sun. Terminal 2 allocated.
British Airways	CHANGE	Reduce LHR from eight to seven flights per day (S19 is now six).
Cathay Pacific	CHANGE	More use of A350-1000 than A350-900 vs W18. 01Dec onwards is all A350-1000.
EasyJet	CHANGE	x15 based aircraft, W18 was x14, S19 is x17. New route HRG, RVN and VRN, plus JER and NCE cont from S19. Overall growth +5% vs W18.
El Al Israel Airlines	NEW	New twice per week TLV with B737-800 Weds and Sun, cont from S19 which was three per week.
Enter Air	NEW	Part week based B737-400 Dec-Mar, weekly HRG and BJL charters.
Finnair	CHANGE	Mainly A321 offering +39% extra seat capacity.
Flybe	CHANGE	Increase DUS three to four per day, SOU up five to six per day, IOM down five to four per day, No MXP and TLS go along with weekly INN charter.
FlyEgypt	NEW	Weekly HRG charter series Oct-Dec on Tuesdays with B737-800. Terminal T1 allocated.
Iberia Express	CHANGE	Increase two to three per week to MAD.
Icelandair	CHANGE	Increase KEF six to seven per week.
Jet Airways	CANCELLED	Five per week BOM that operated W18 will not operate W19 (Jet ceased ops).
Jet2.com	CHANGE	New route CGN, DLM, INN and TLS all short season series. Overall seat growth +26% due due growth on existing destinations.
Lufthansa	CHANGE	MUC increases from three to four per day as in S19.
Norwegian	CHANGE	New BGO twice per week Mon & Fri, SVG reduce from three to two per week.
Pegasus Airlines	NEW	New daily SAW (Sabiha Gokcen) with B737-800 cont from S19.
Qatar Airways	CHANGE	Increase x18pw to x21pw as S19, also equipment upgrade to B777-300 on morning and lunchtime services and B787-8 in the evening. Overall seat growth +30% vs W18.
Ryanair	CHANGE	Increase eight to twelve based aircraft as is S19. New route KTW, MXP & PRG. New cont. from S19 is BLL, BOD, GOT, KBP, MRS, NTE, RAK, SKG. Cancelled routes BFS & FRA. Overall seat growth +5% vs W18.
SAS Scandinavian	NEW	New route SVG twice per week and new twice per week AAR cont from S19. OSL increase from seven to nine per week.
TAP Air Portugal	CHANGE	Reduce LIS from x11pw to x7pw.
Thomas Cook (UK)	CANCELLED	Sadly ceased operations Sep19.
TUI Airways	CHANGE	New route RMF (Marsa Alam), overall seat growth +6%.
United Airlines	CHANGE	Equipment change from B757-200 in W18 to B767-300 W19, S19 was B767-400.
Virgin Atlantic	CHANGE	Increase JFK from three per week W18 to daily W19. BGI increase two to three per week.

Full Season - ATM Analysis

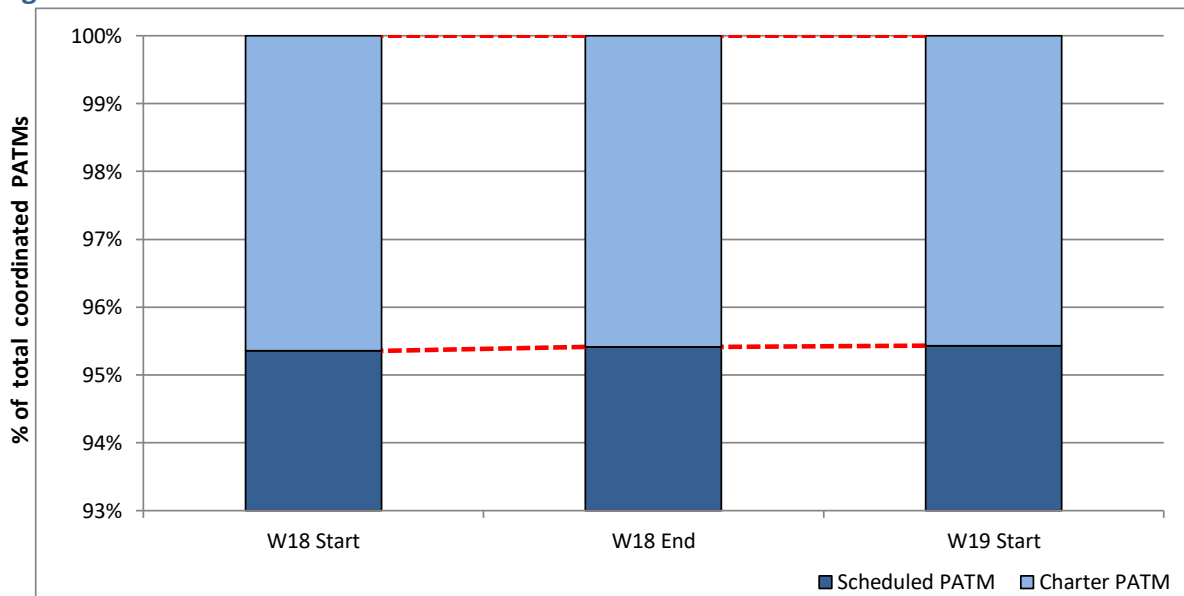


Total ATMs: Passenger ATMs vs. Freight ATMs



Schedule Snapshot

Passenger ATMs: Scheduled vs. Charter

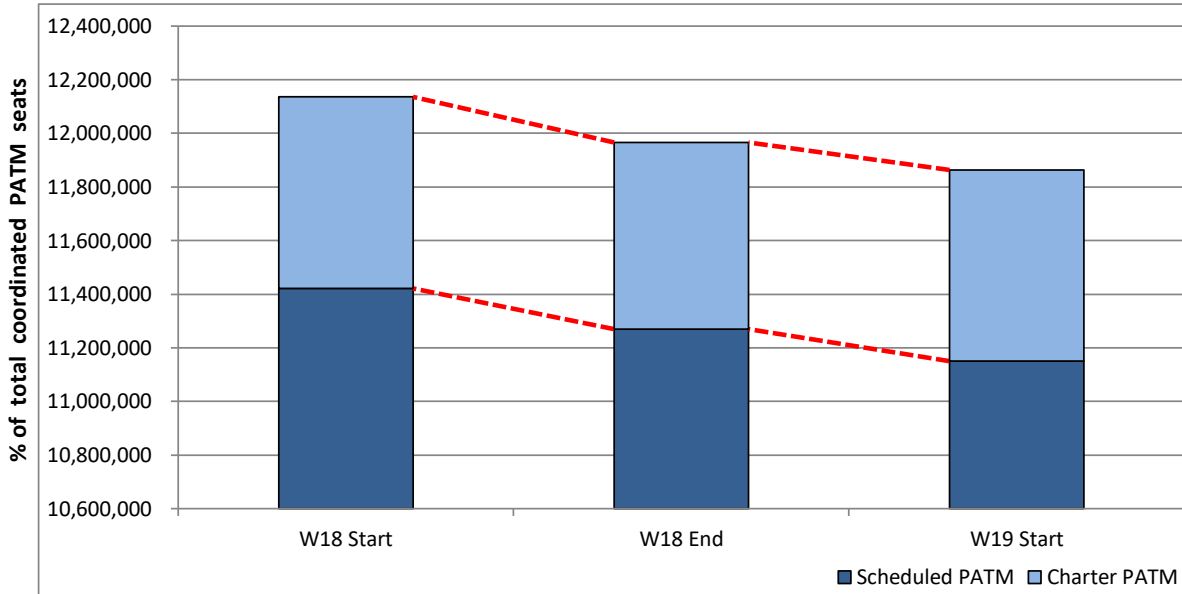


Schedule Snapshot

Full Season - PATM Seats Analysis

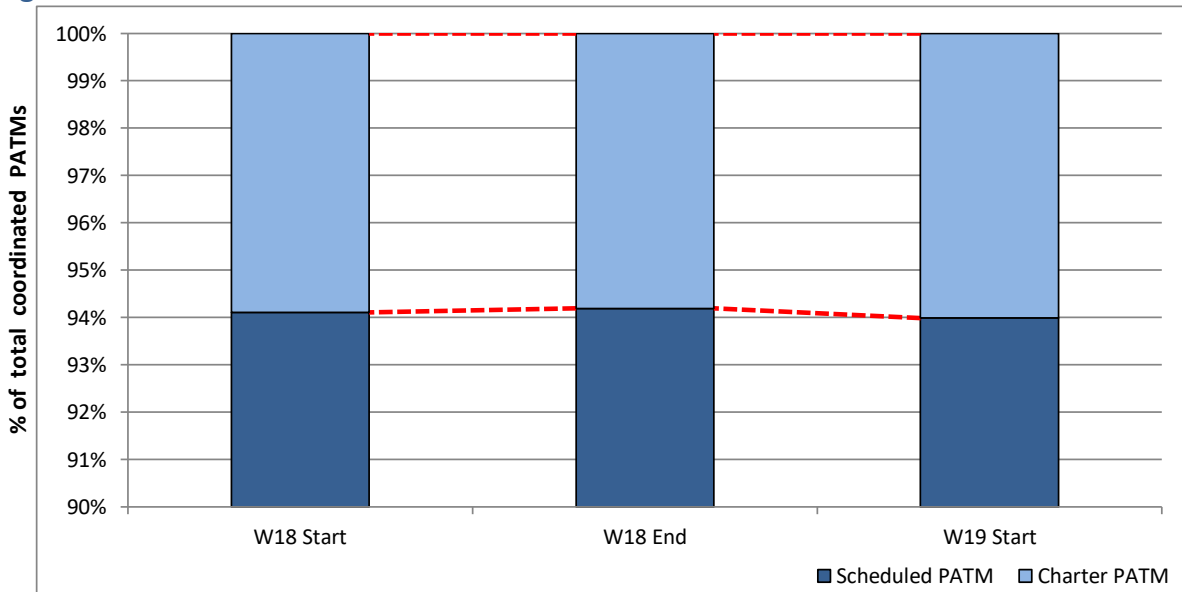


Total Passenger ATM seats: Scheduled vs. Charter



Schedule Snapshot

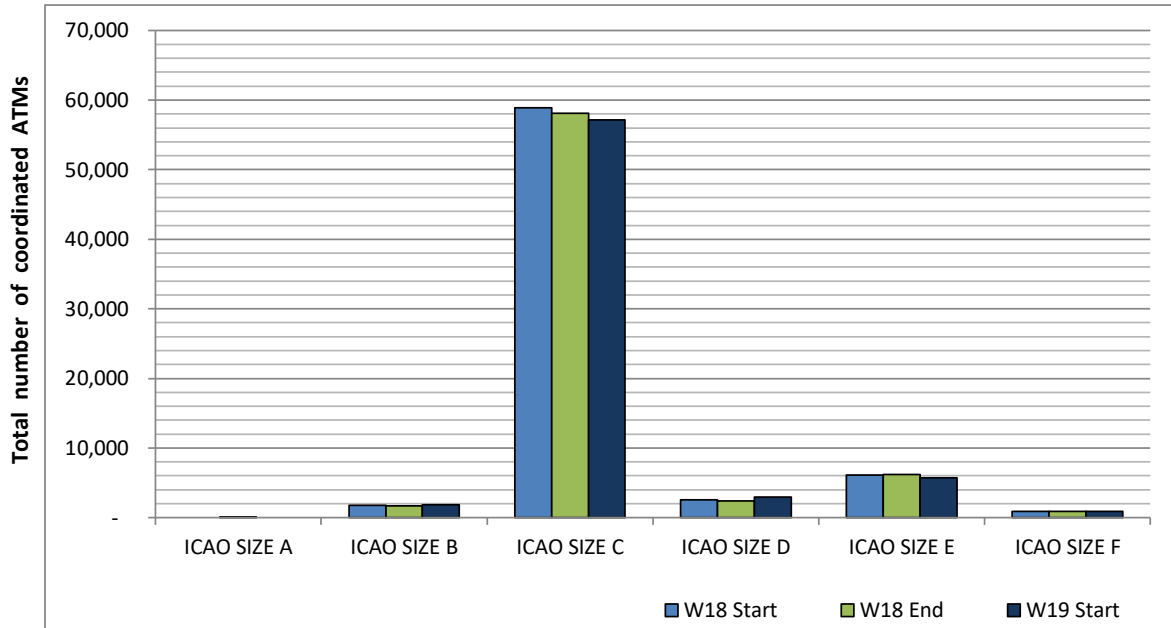
Passenger ATM seats: Scheduled vs. Charter



Schedule Snapshot

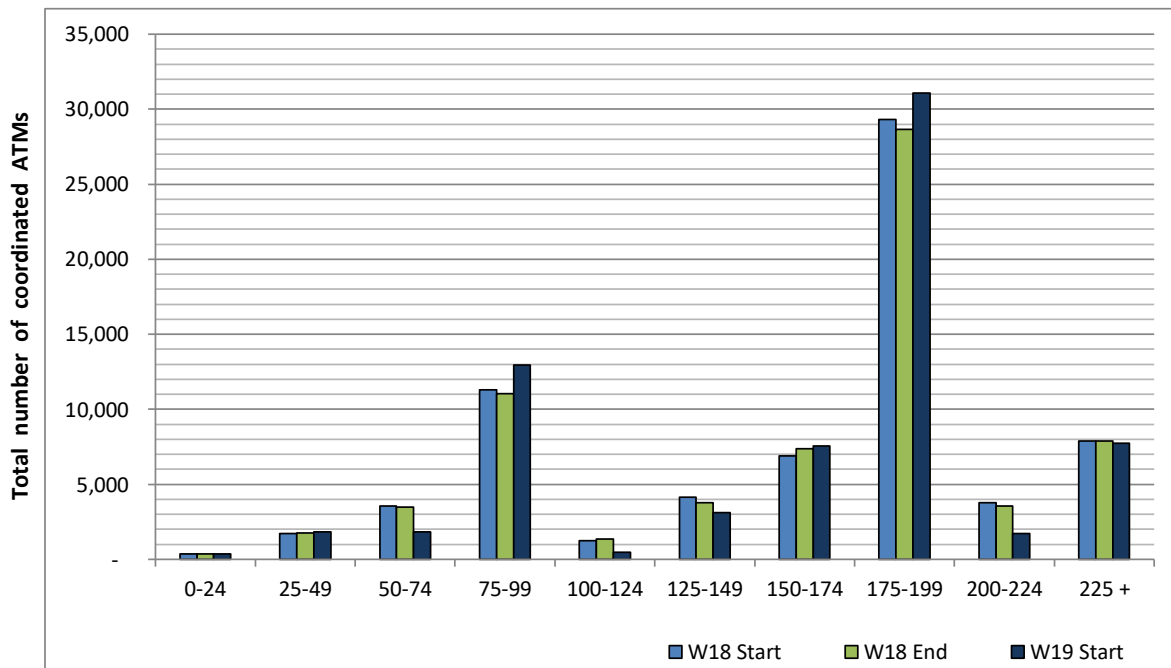
Full Season - Aircraft Size Analysis

ICAO size designation



Note: See Glossary for definitions of ICAO SIZE groupings

Air Transport Movement seat distribution

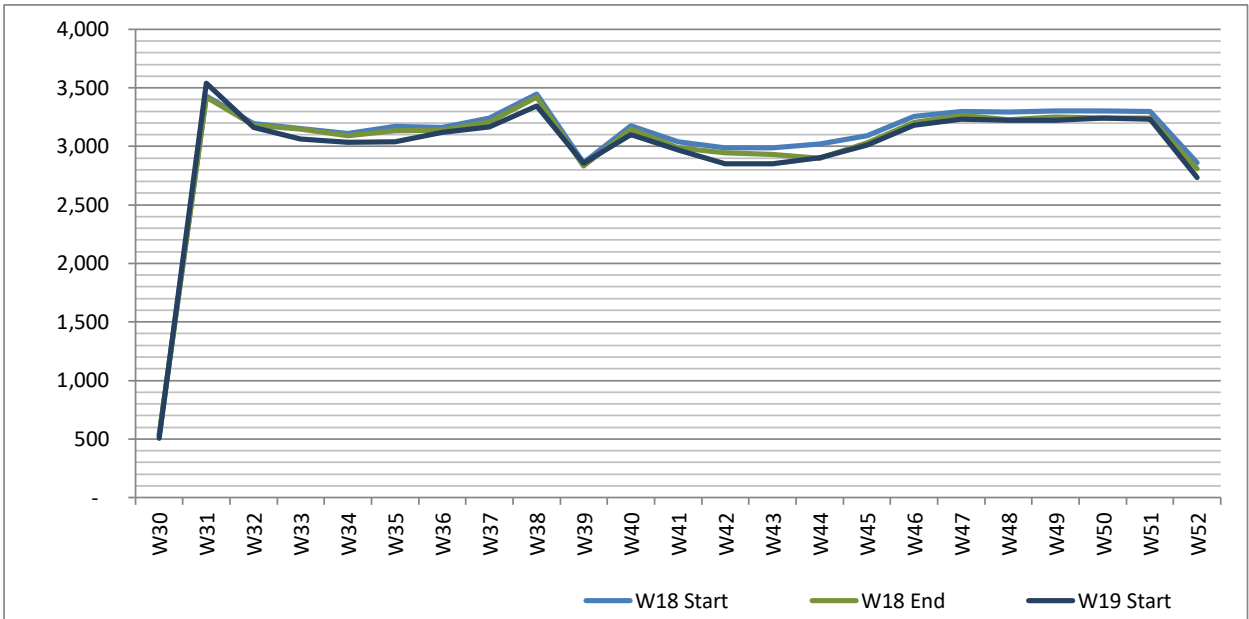


Note: FREIGHT-ONLY services with 0 seats are included in the first seat band '0-24'

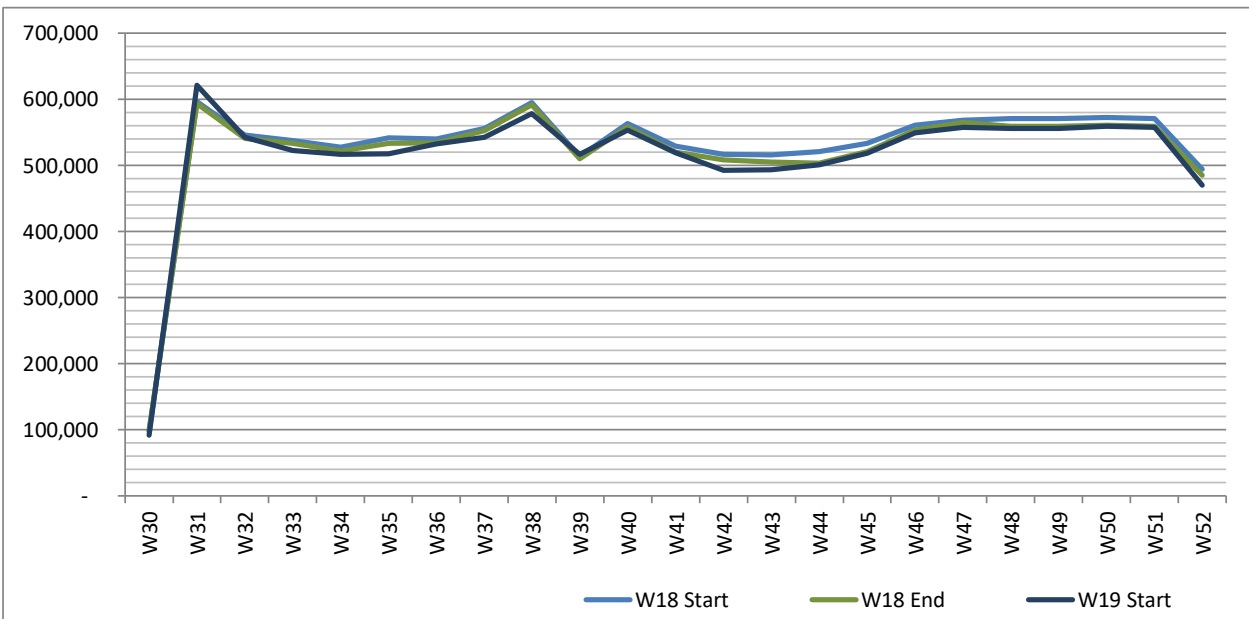
Full Season - Seasonality



Air Transport Movements by week of season



Air Transport Movement Seats by week of season



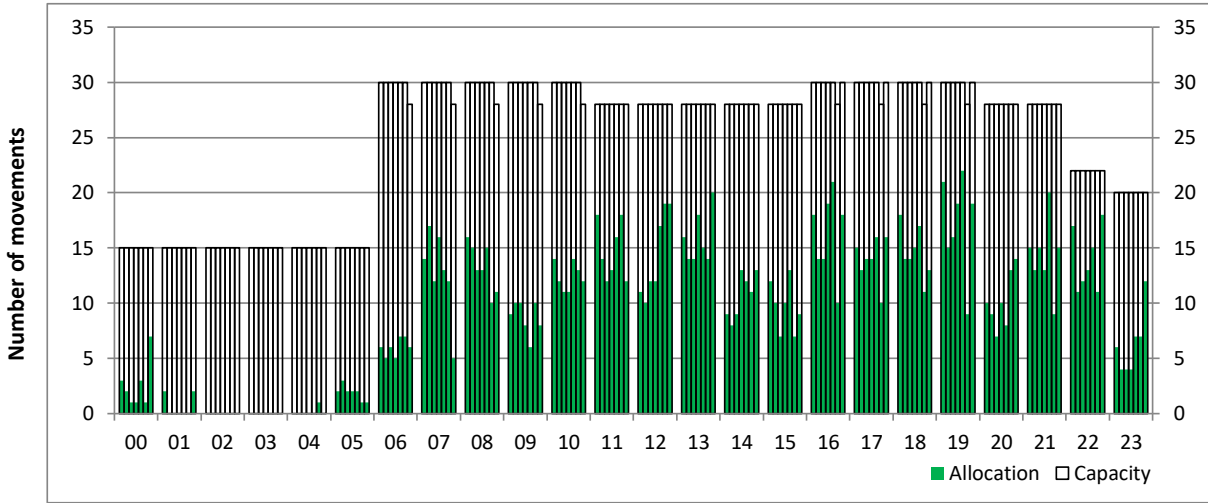
Peak Week - Hourly Runway Allocation

Schedule: W19 Start



Hourly Arrival Allocation

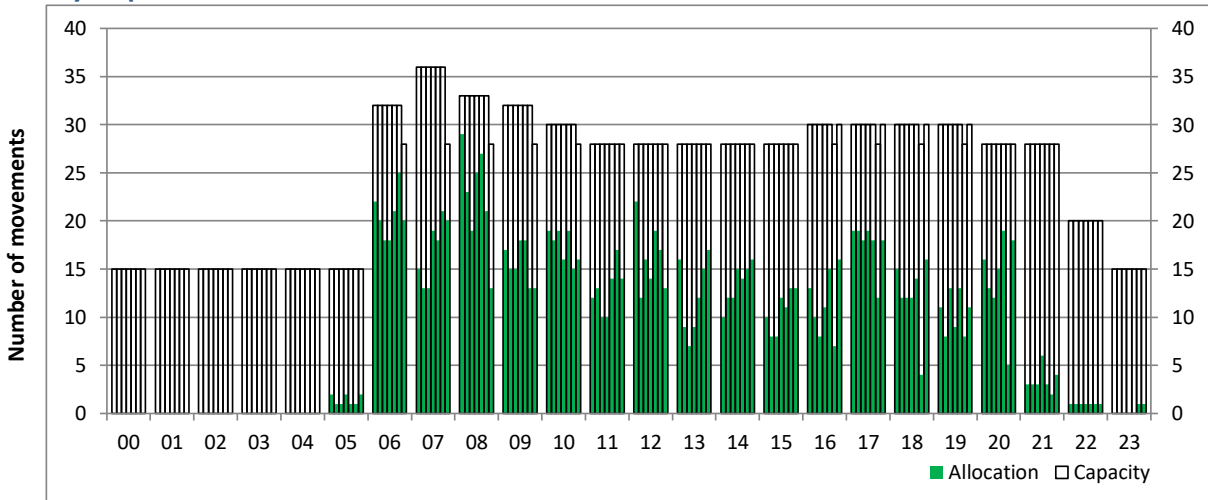
Time: UTC



Hour of day (24 hour format)

Hourly Departure Allocation

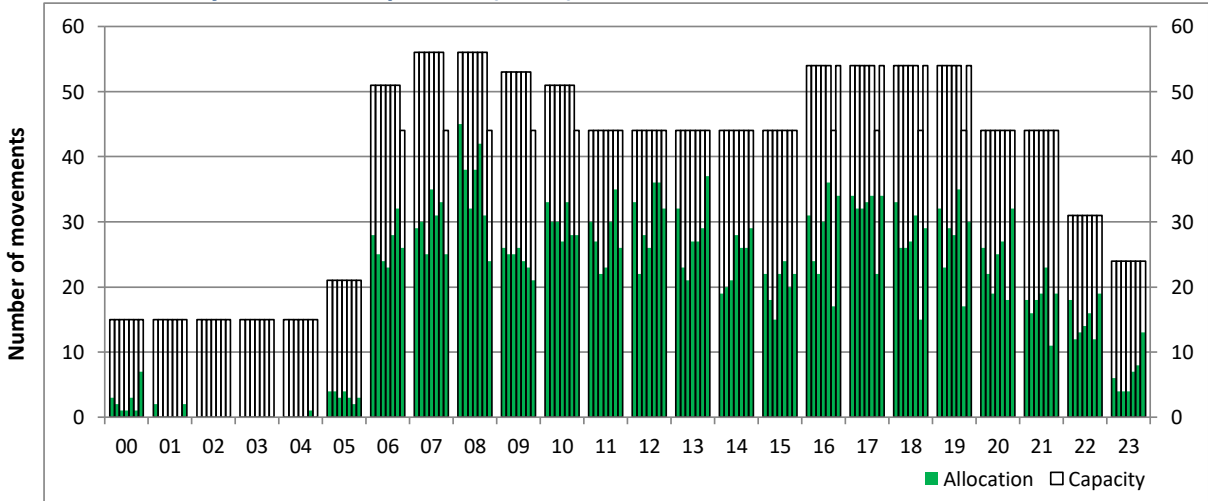
Time: UTC



Hour of day (24 hour format)

Combined Hourly Arrival & Departure (Total) Allocation

Time: UTC



Hour of day (24 hour format)

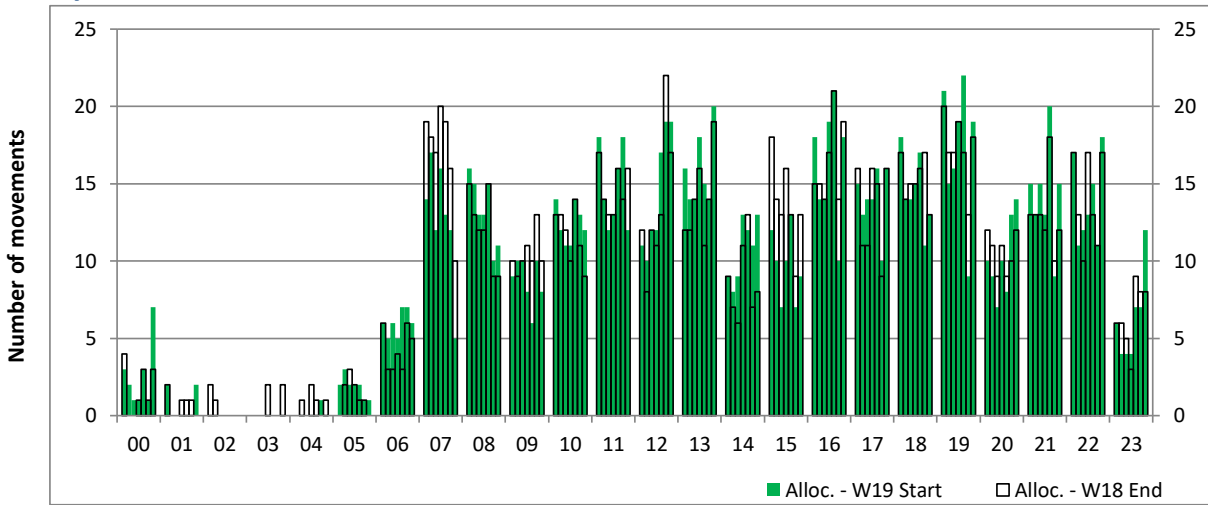
Peak Week - Runway Allocation Comparison

Comparison of W19 Start vs. W18 End



Hourly Arrival Allocation

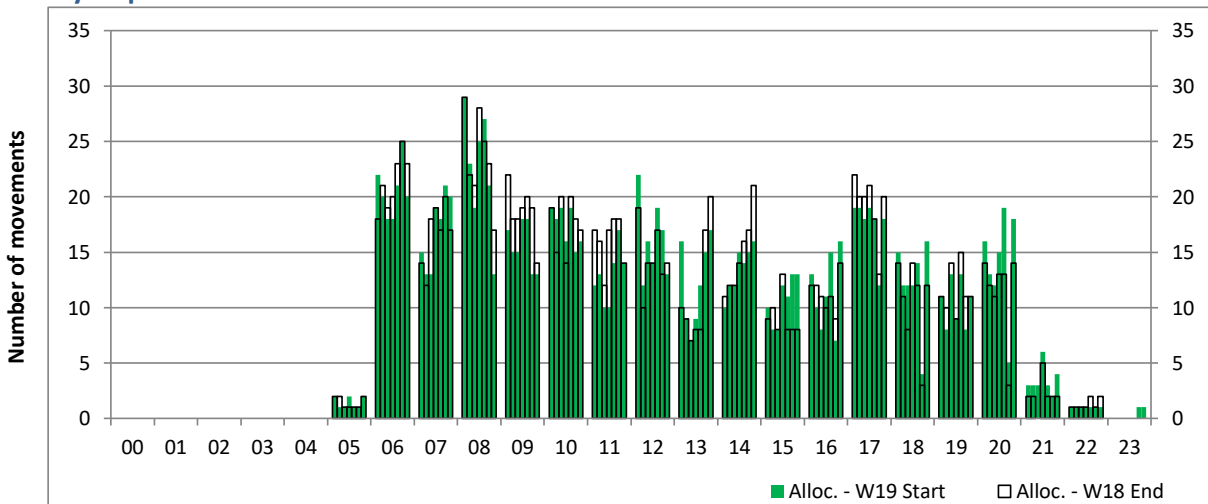
Time: UTC



Hour of day (24 hour format)

Hourly Departure Allocation

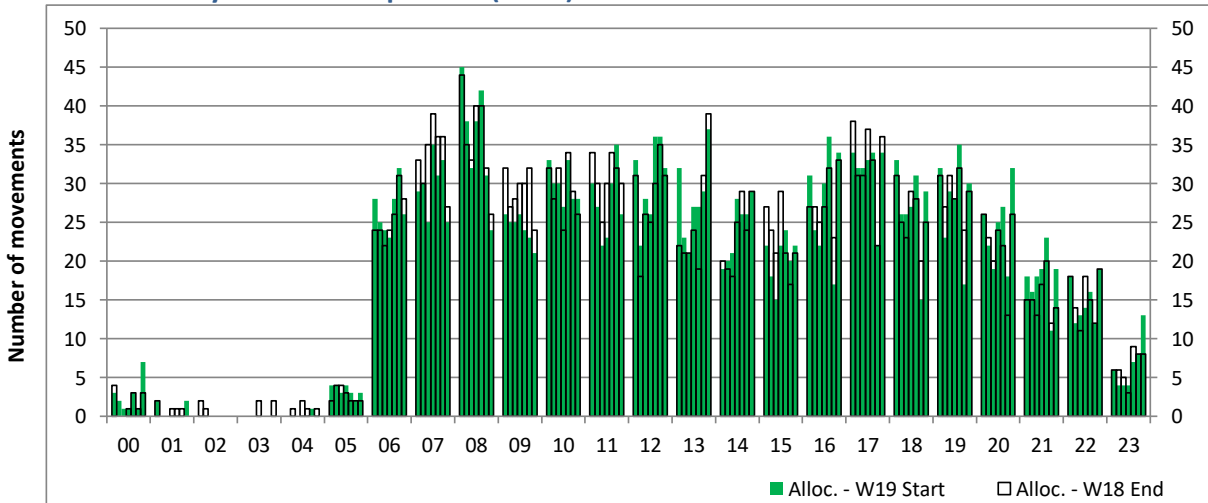
Time: UTC



Hour of day (24 hour format)

Combined Hourly Arrival & Departure (Total) Allocation

Time: UTC



Hour of day (24 hour format)

Peak Week - Passengers Histogram

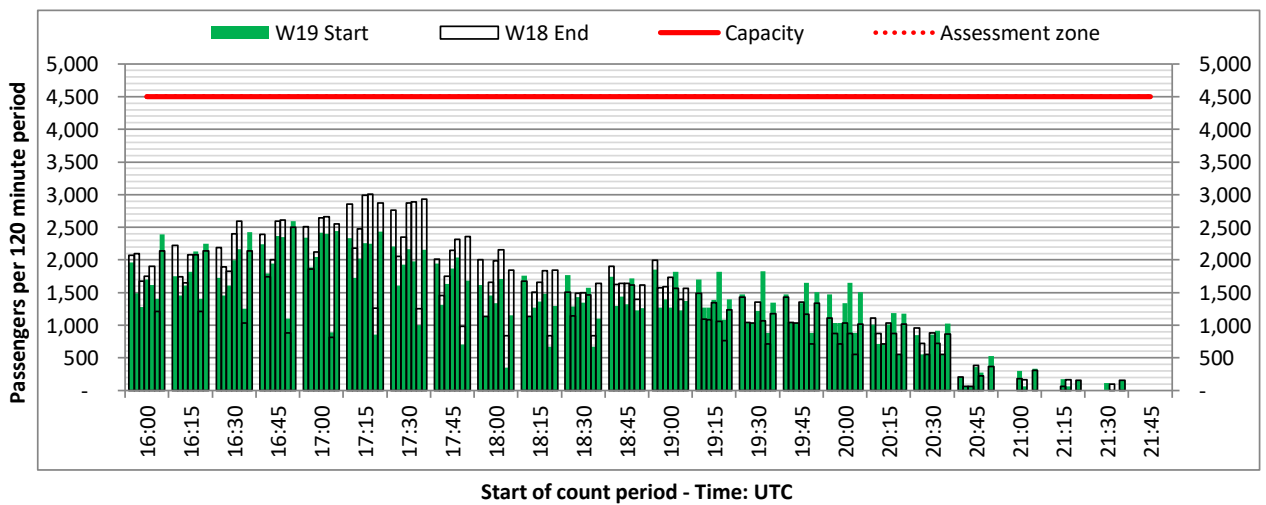
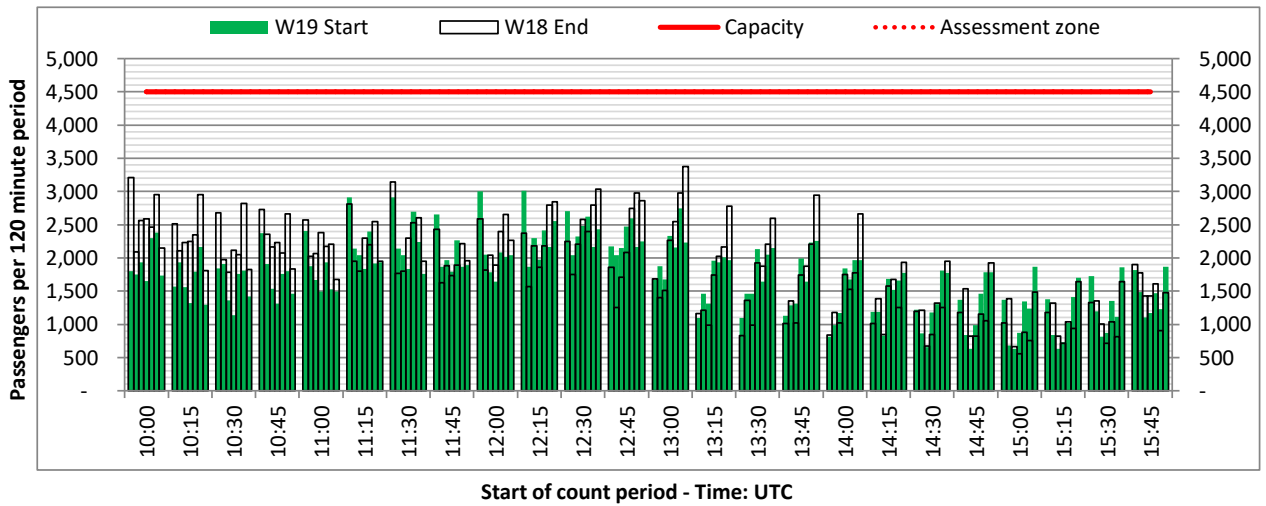
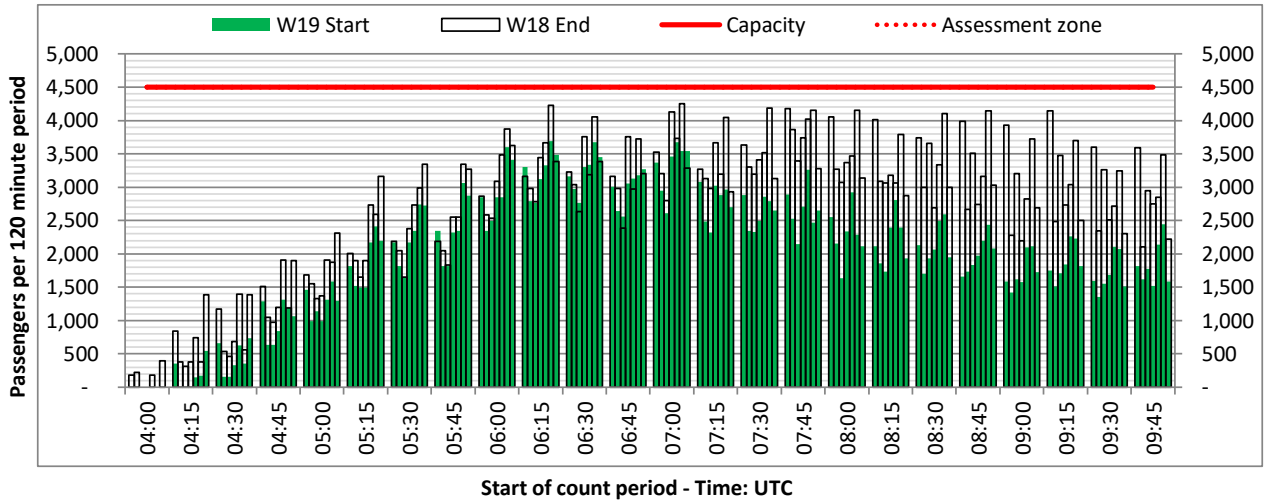
DEPARTURE - 120 minute count rolling every 15 mins (T120/15)



Terminals: T1

Operators: All Operators

Days: 1234567



Peak Week - Passengers Histogram

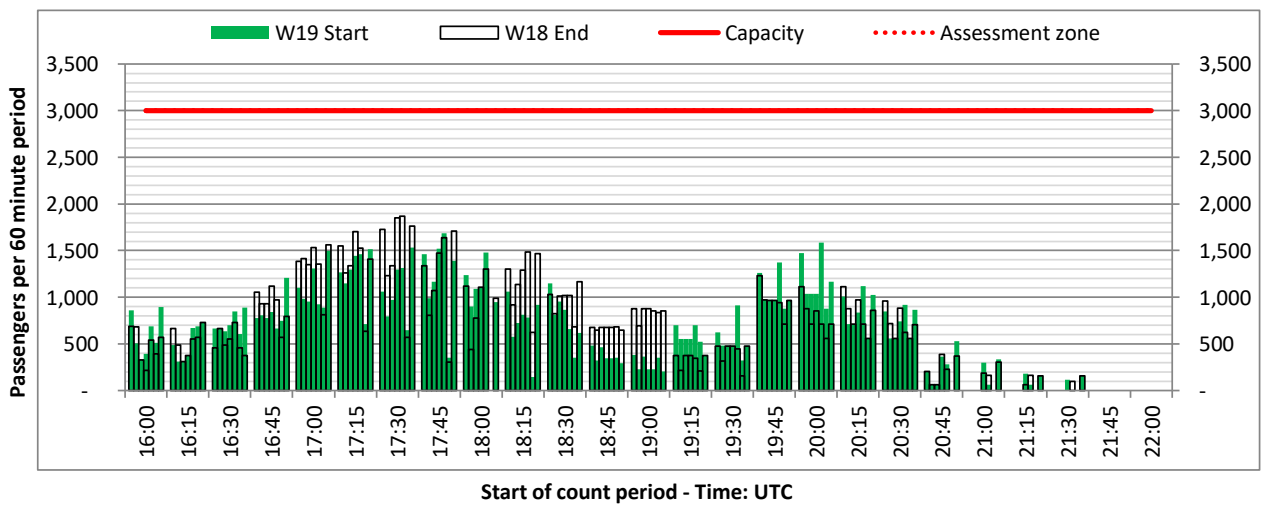
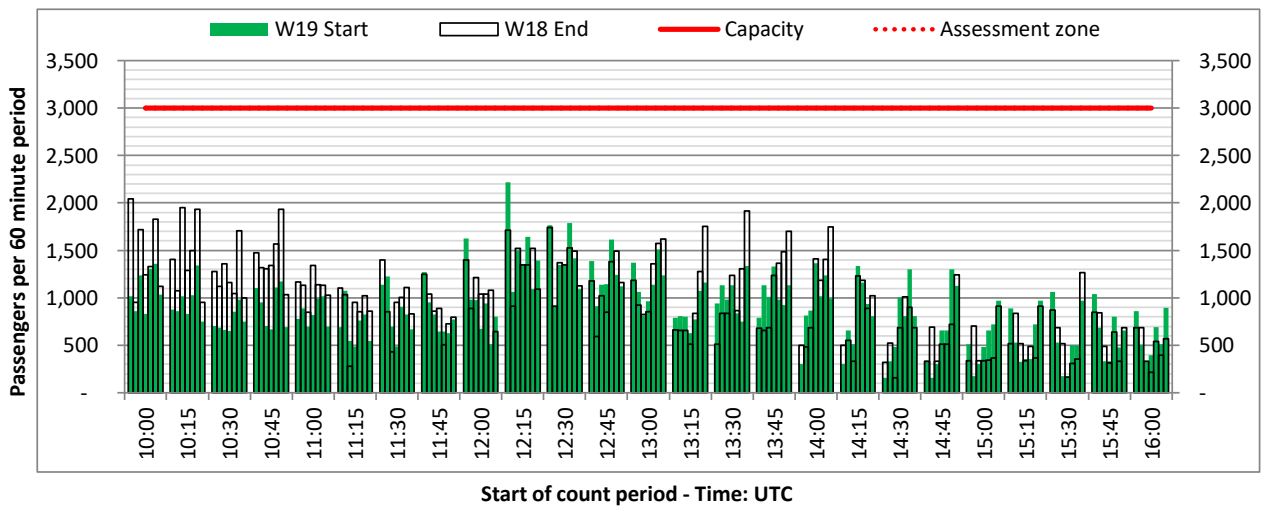
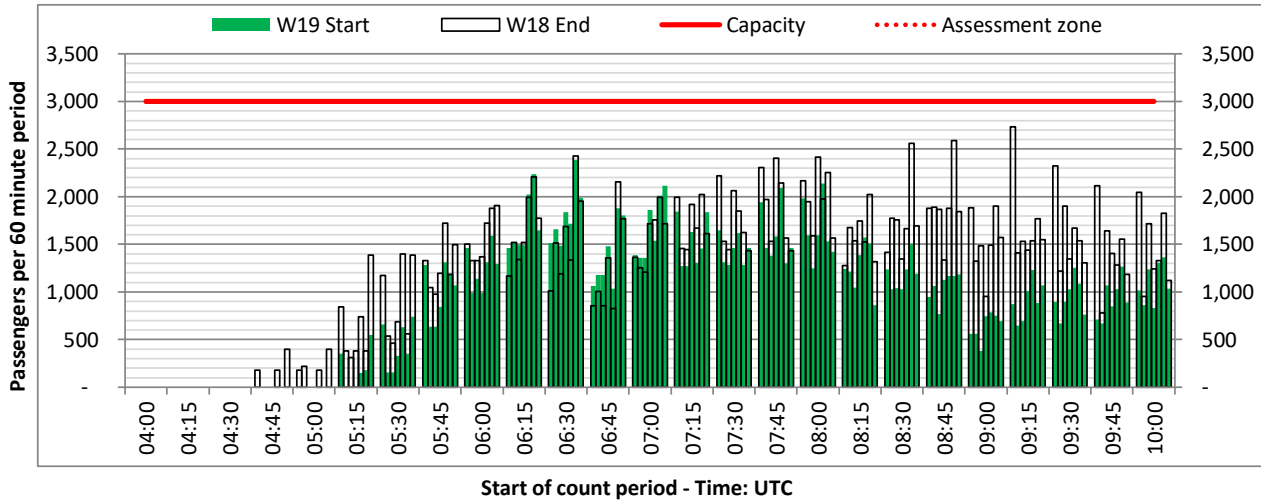
DEPARTURE - 60 minute count rolling every 15 mins (T60/15)



Terminals: T1

Operators: All Operators

Days: 1234567



Peak Week - Passengers Histogram

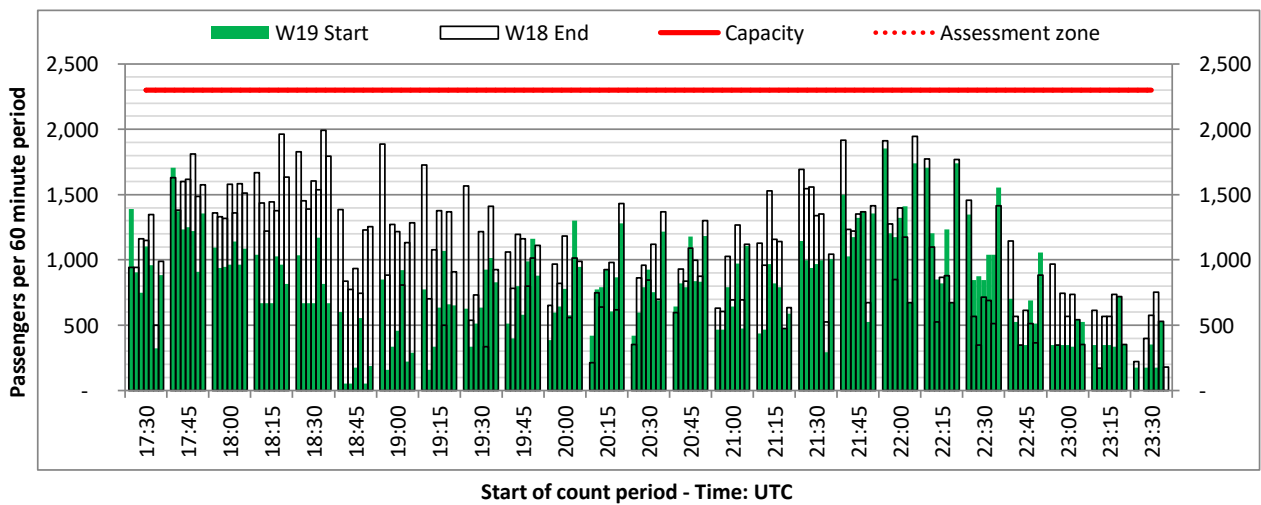
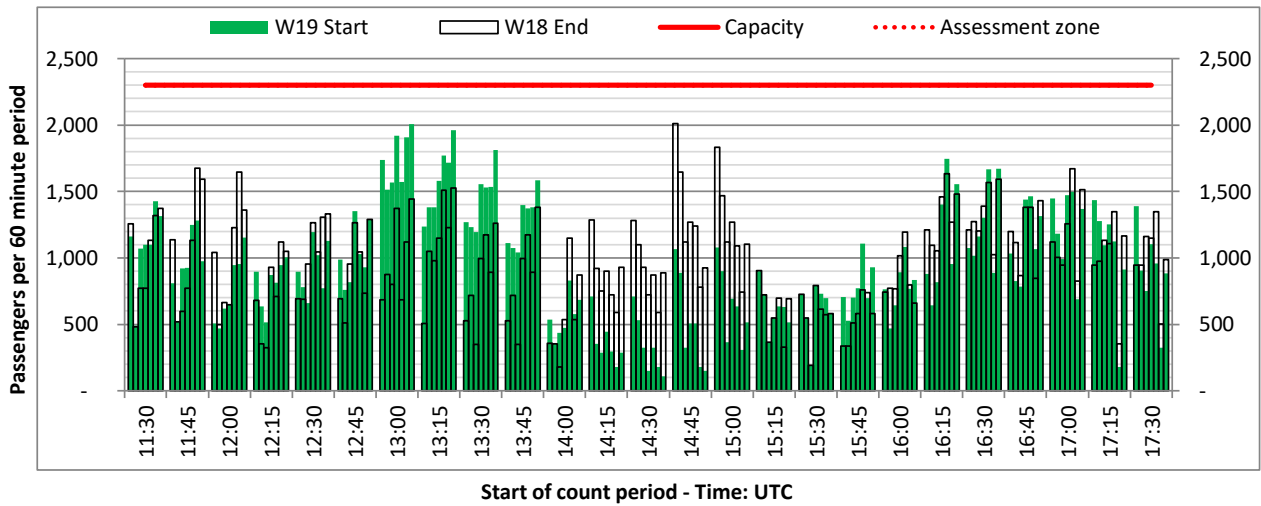
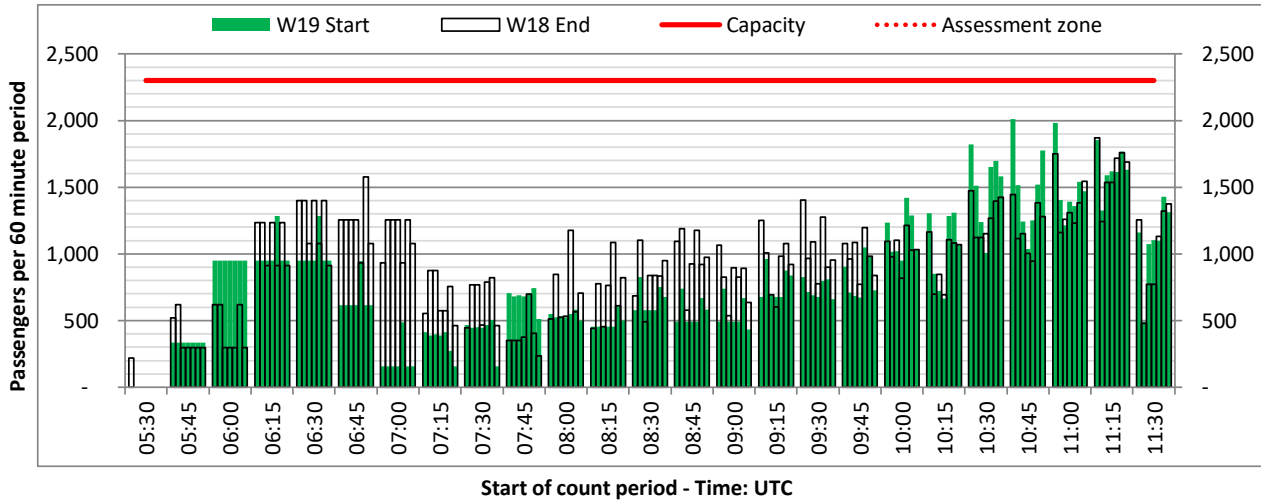
ARRIVAL - 60 minute count rolling every 15 mins (T60/15)



Terminals: T1

Operators: All Operators

Days: 1234567



Peak Week - Passengers Histogram

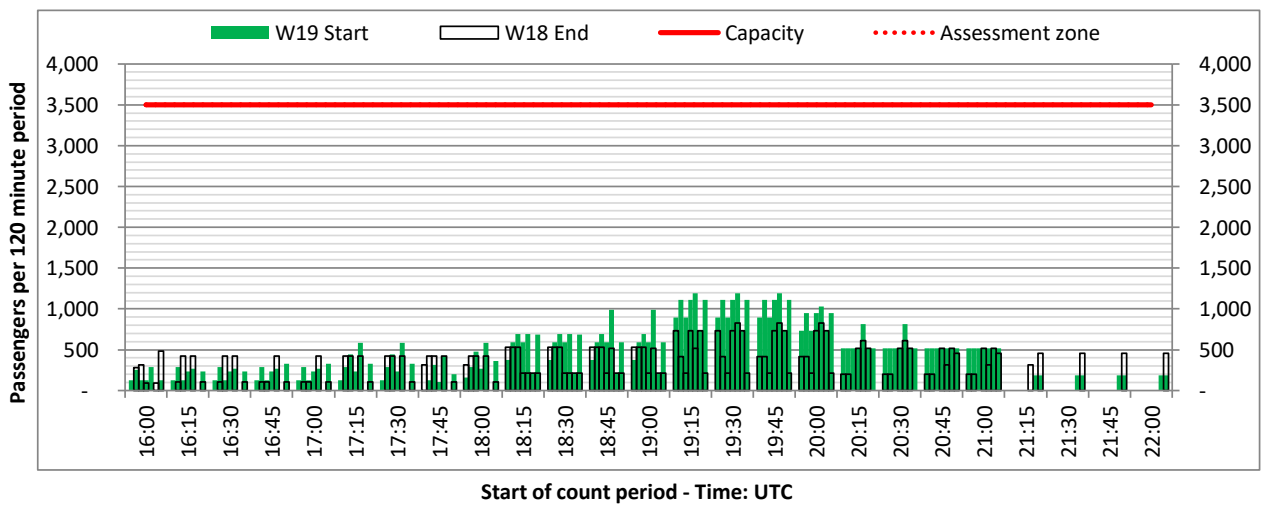
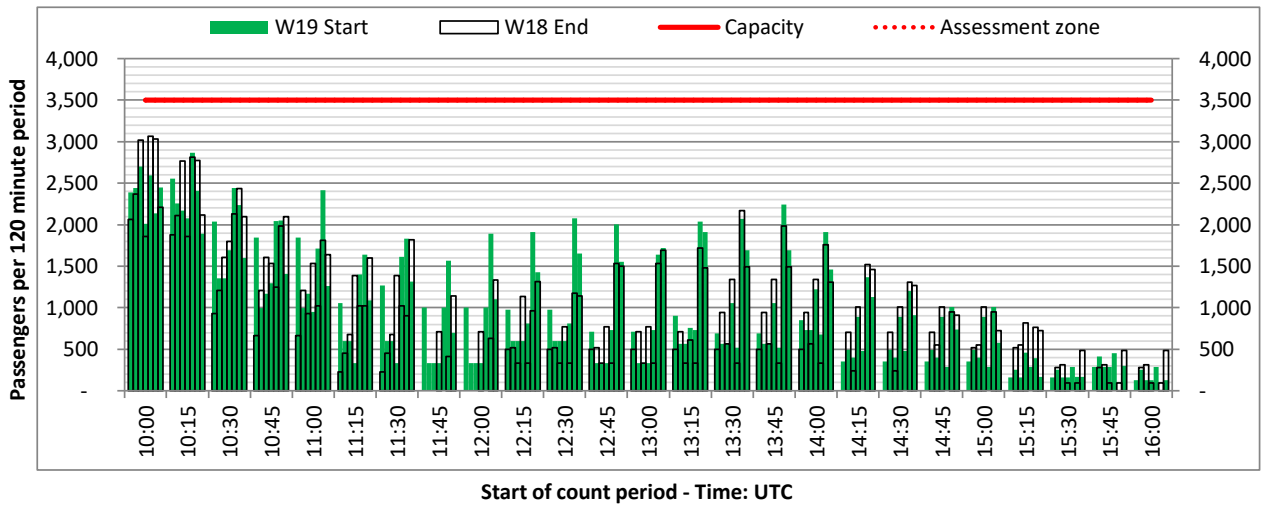
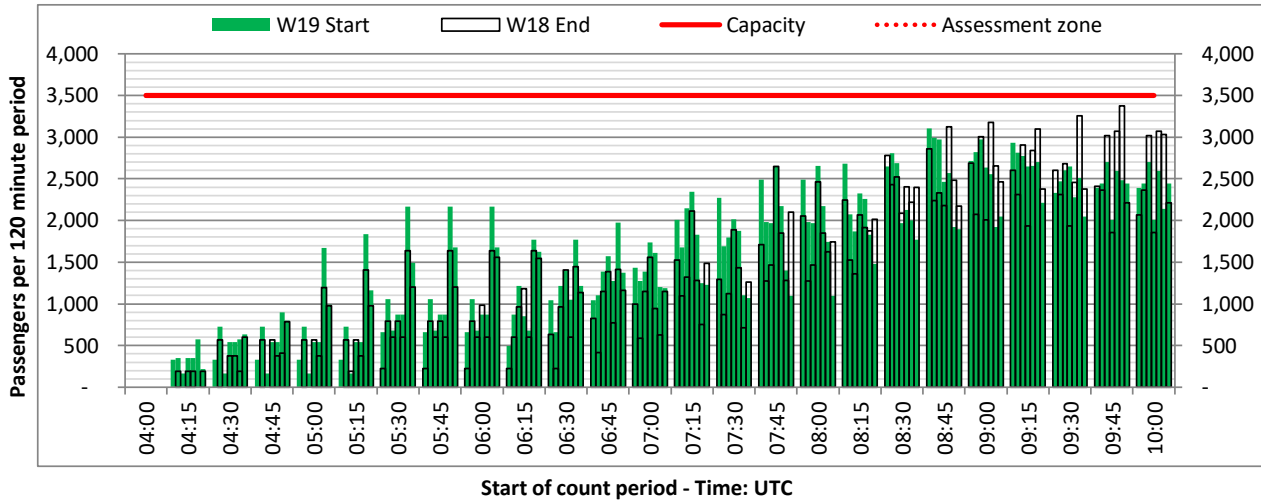
DEPARTURE - 120 minute count rolling every 15 mins (T120/15)



Terminals: T2

Operators: All Operators

Days: 1234567



Peak Week - Passengers Histogram

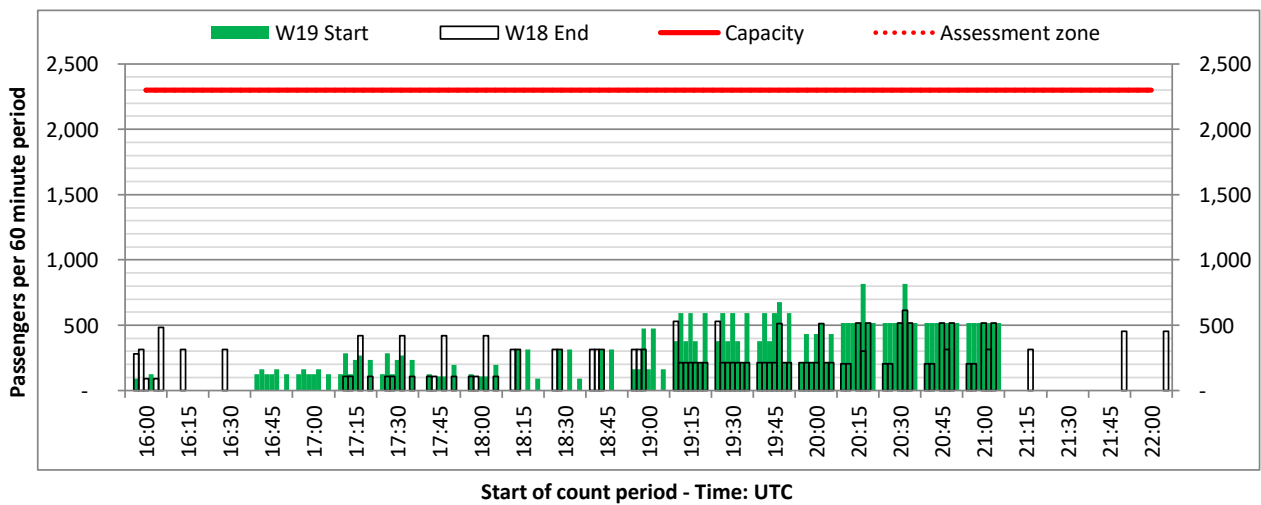
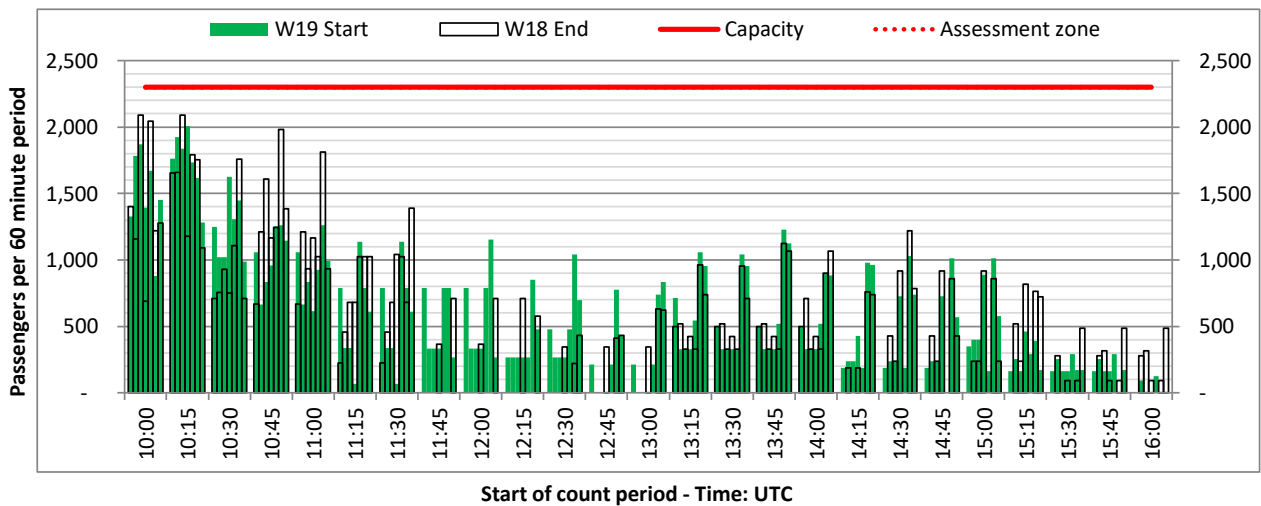
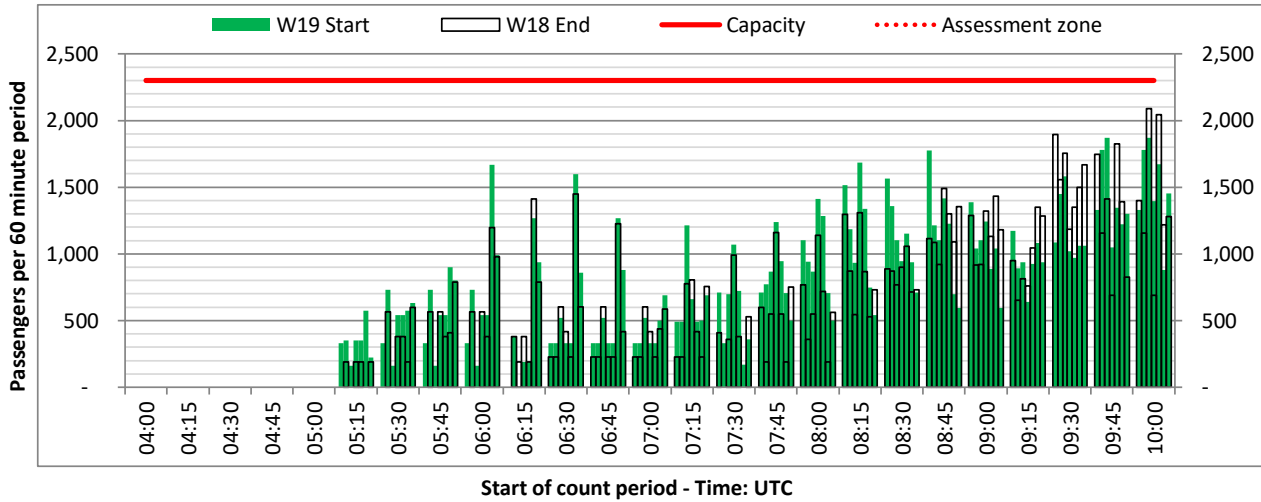
DEPARTURE - 60 minute count rolling every 15 mins (T60/15)



Terminals: T2

Operators: All Operators

Days: 1234567



Peak Week - Passengers Histogram

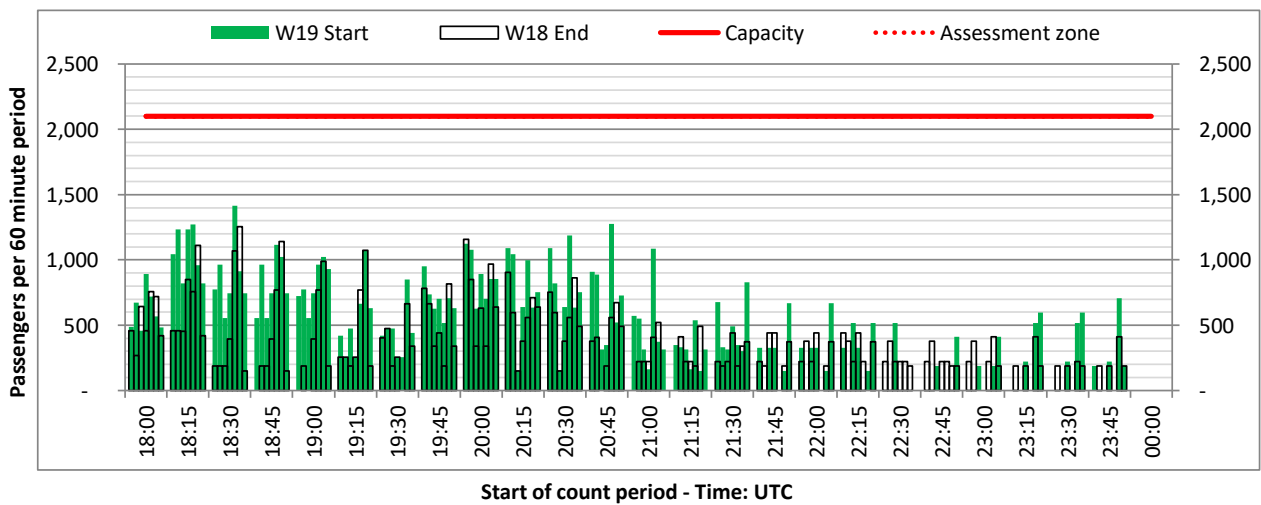
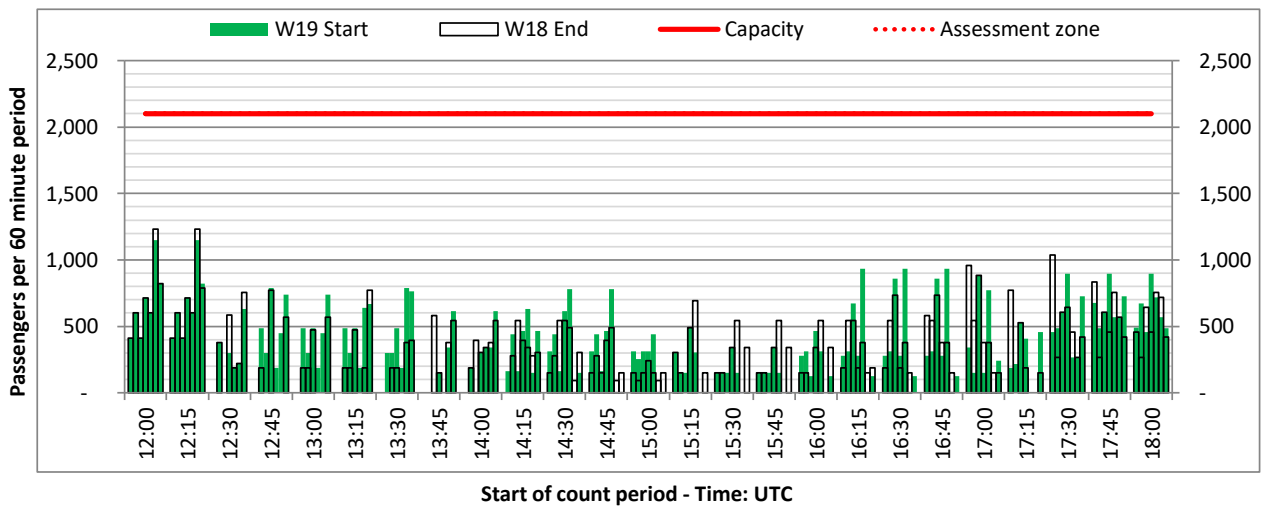
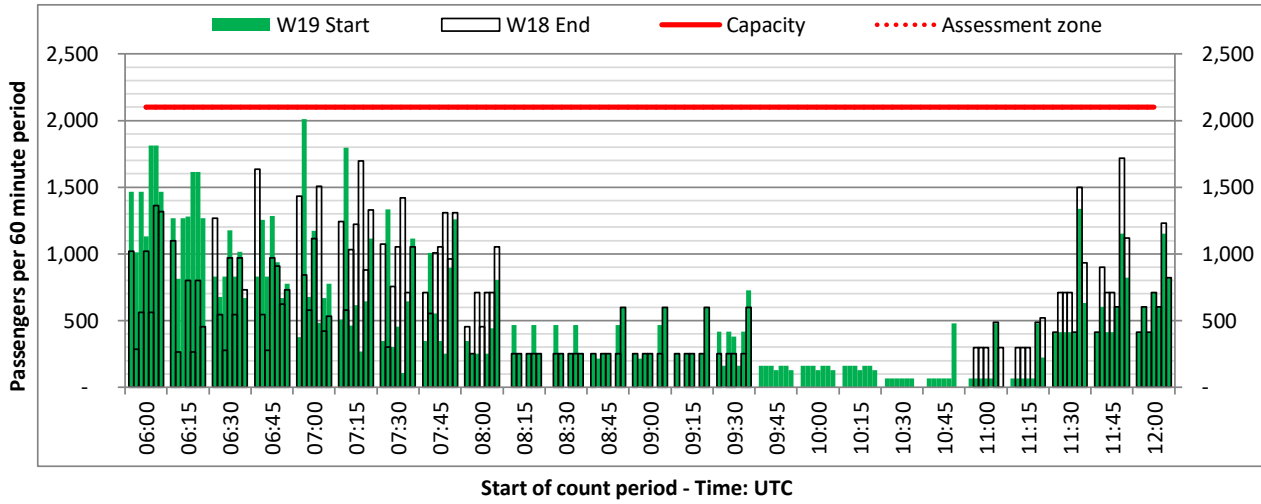
ARRIVAL - 60 minute count rolling every 15 mins (T60/15)



Terminals: T2

Operators: All Operators

Days: 1234567



Peak Week - Passengers Histogram

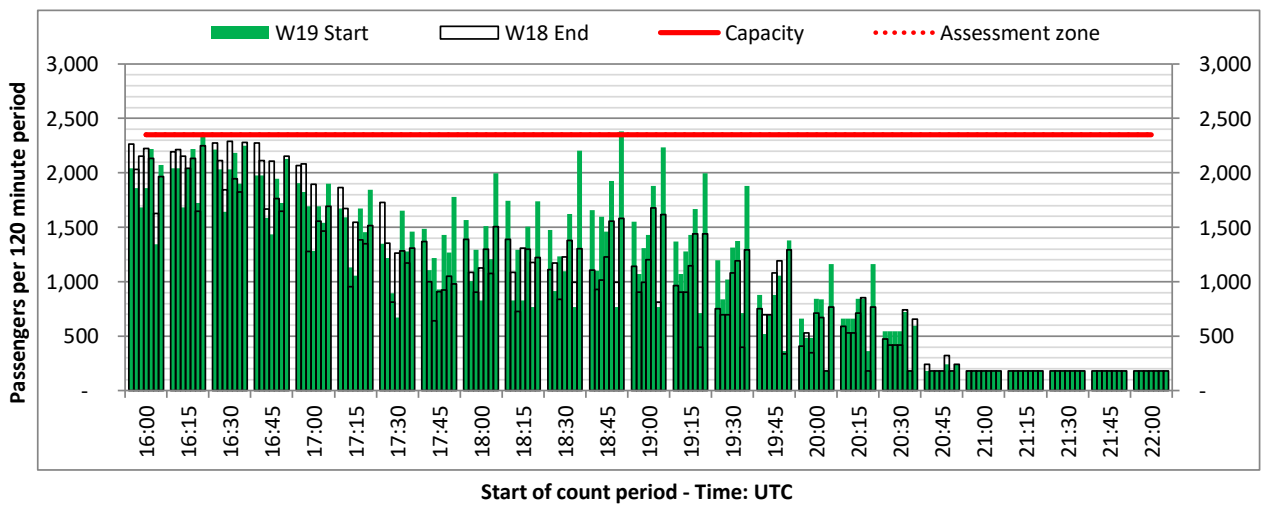
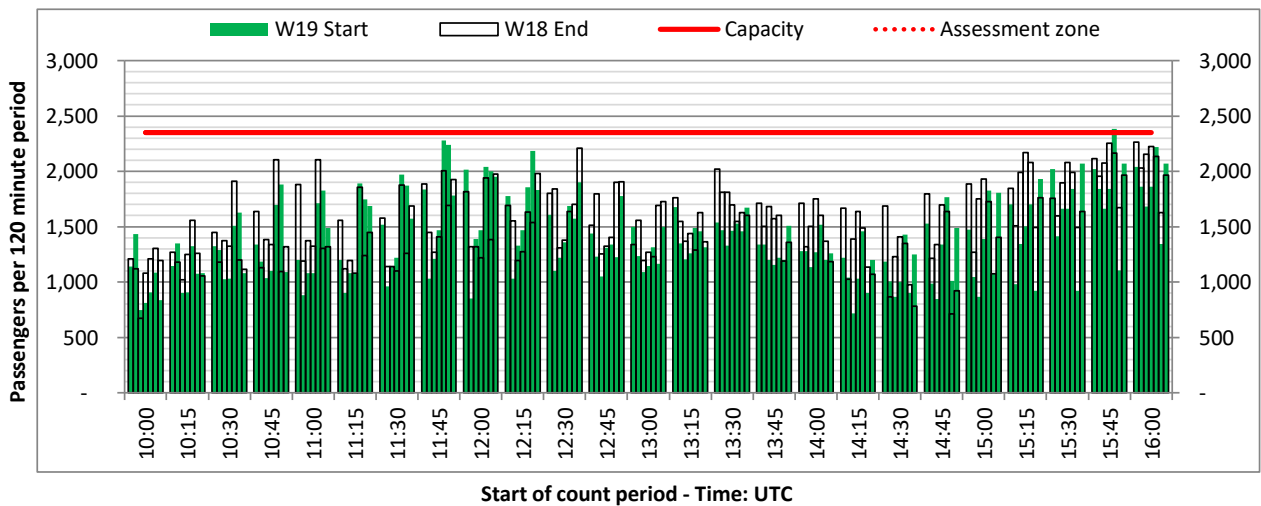
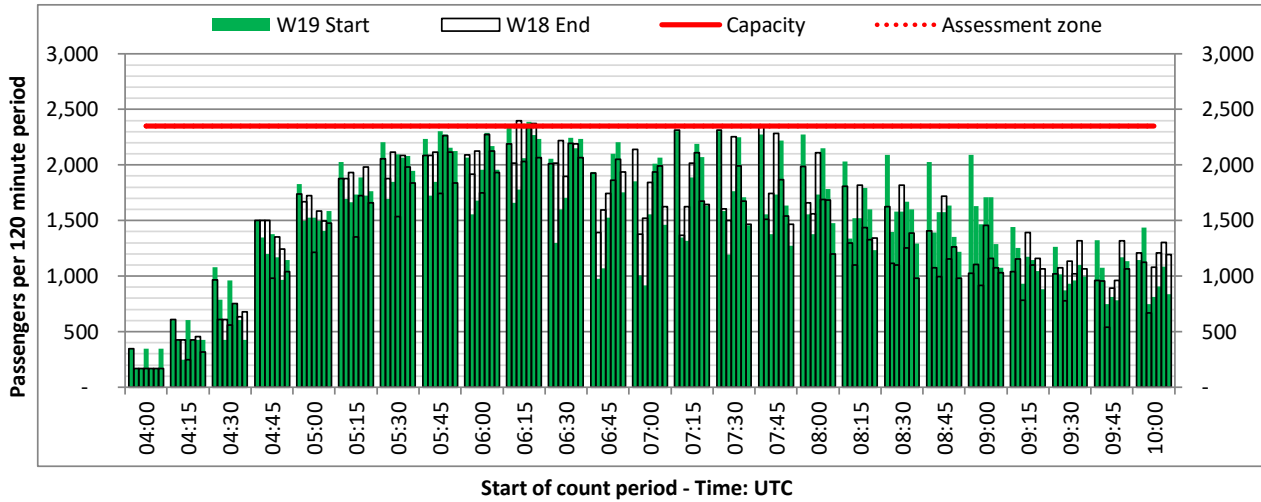
DEPARTURE - 120 minute count rolling every 15 mins (T120/15)



Terminals: T3

Operators: All Operators

Days: 1234567



Peak Week - Passengers Histogram

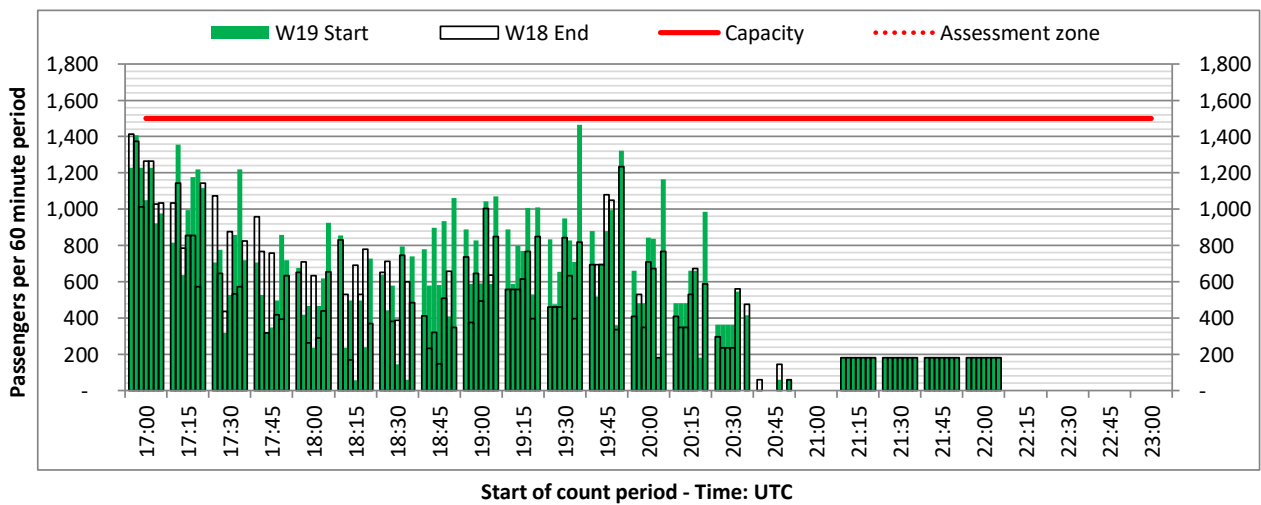
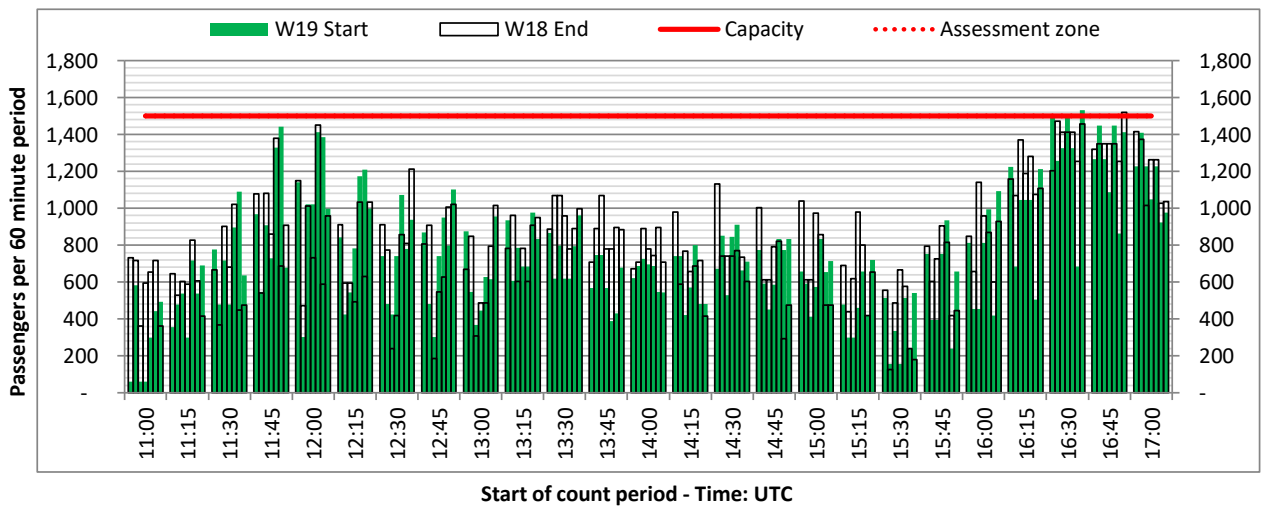
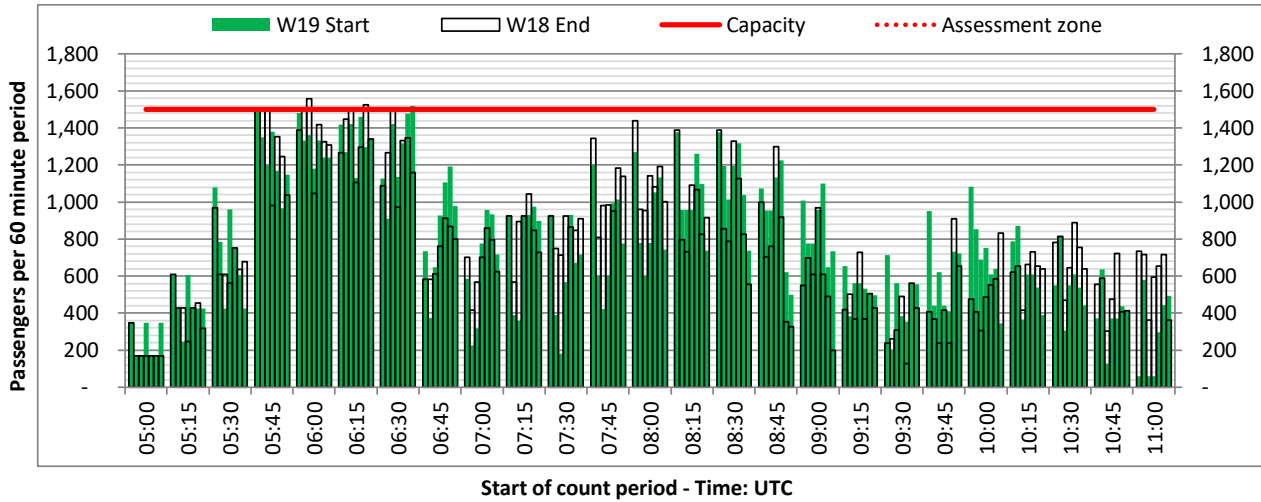
DEPARTURE - 60 minute count rolling every 15 mins (T60/15)



Terminals: T3

Operators: All Operators

Days: 1234567



Peak Week - Passengers Histogram

ARRIVAL - 60 minute count rolling every 15 mins (T60/15)

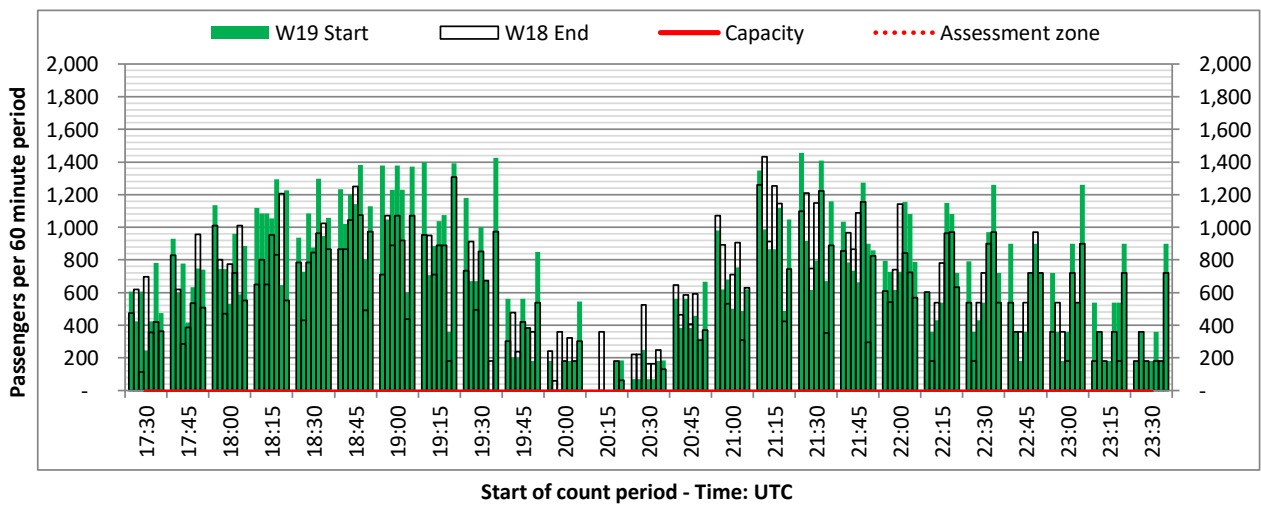
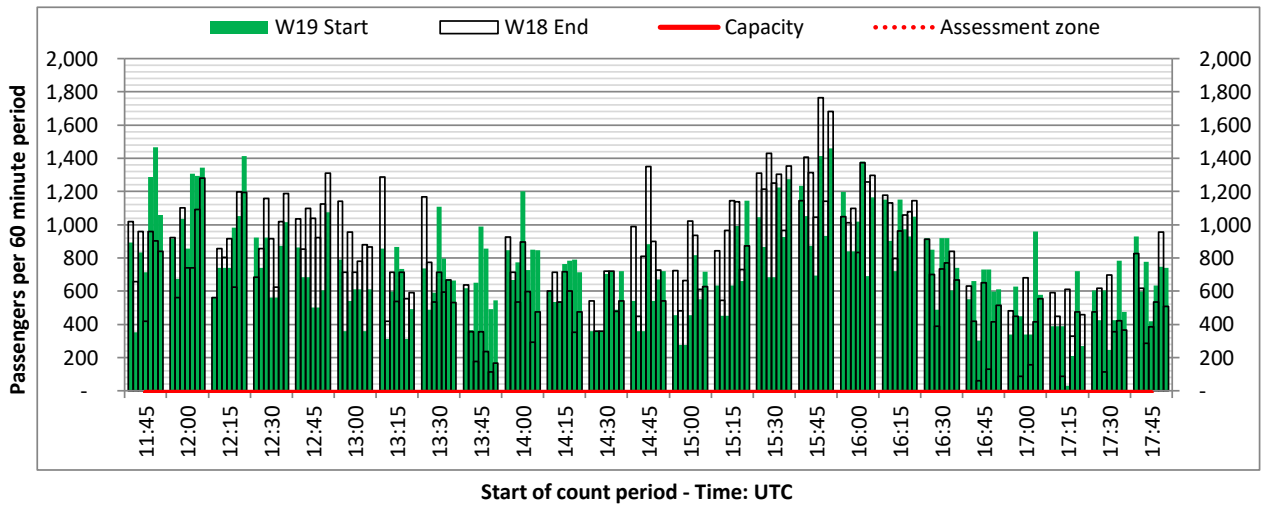
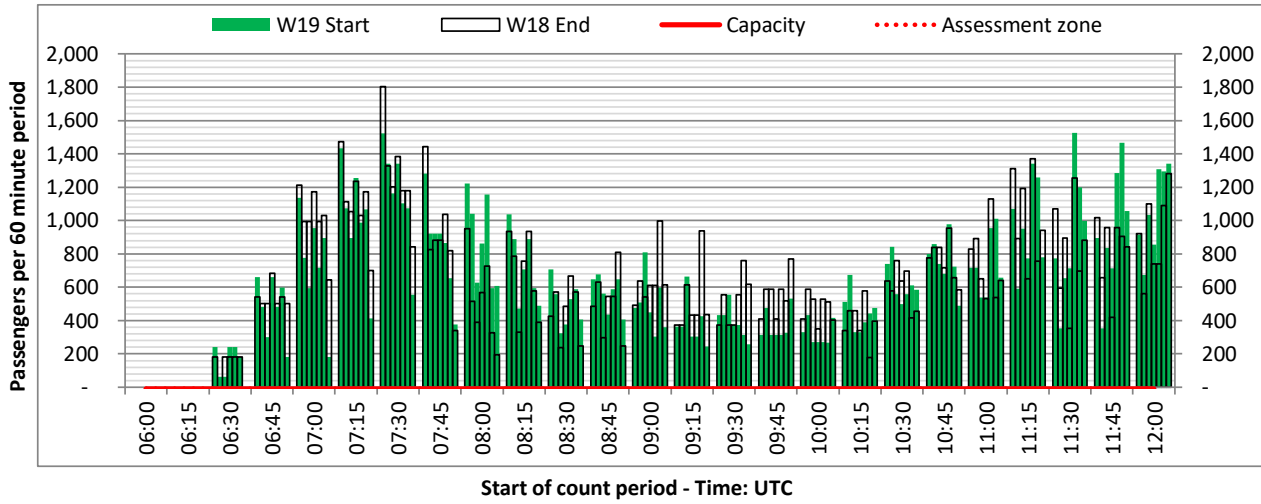


(unable to split domestic and Intl in report so no limit shown)

Terminals: T3

Operators: All Operators

Days: 1234567



Glossary



Air Transport Movement (ATM)	Any aircraft movement which is either a scheduled or chartered passenger or cargo flight.
Common Travel Area (CTA)	Origin or Destination is in Republic of Ireland or the Channel Islands.
Demand	Unconstrained demand before any schedule adjustments have been made.
"Fill-in"	These are gaps in a historic series of slots which the carrier requests to "Fill-in" at Initial Submissions - Fill-ins will be recognisably part of the historic series and will have the same flight details to qualify as a "Fill-in".
Hist (SHL)	Snapshot of historic schedule rolled over from end of the previous equivalent season - as advised to airlines in the SHLs.
ICAO Size A	Aircraft with wingspan between 0.00m - 14.99m.
ICAO Size B	Aircraft with wingspan between 15.00m - 23.99m.
ICAO Size C	Aircraft with wingspan between 24.00m - 35.99m.
ICAO Size D	Aircraft with wingspan between 36.00m - 51.99m.
ICAO Size E	Aircraft with wingspan between 52.00m - 64.99m.
ICAO Size F	Aircraft with wingspan between 65.00m - 80.00m.
Init Coord	Snapshot of schedule immediately after Initial Coordination is completed - as advised to airlines in the SALs.
Passenger Air Transport Movement (PATM)	Any aircraft movement which is either a scheduled or chartered passenger flight.
Start	Snapshot of schedule shortly before the start of the scheduling season (exact date given below where used).
Time: Local	Times shown are in LOCAL time for the airport/scheduling season.
Time: UTC	Times shown are in Universal Time Constant (UTC).

Data snapshot descriptions

W18 Start	W18 schedule as cleared on Tue 16-Oct-18.
W18 End	W18 schedule as cleared on Mon 05-Mar-18.
W19 Start	W19 schedule as cleared on Mon 21-Oct-19.
Peak Week	Peak week for W18 is Mon 04-Mar-19 to Sun 10-Mar-19. Peak week for W19 is Mon 02-Mar-20 to Sun 08-Mar-20.

For ACL use

	Airport-Season-Branch-Resource	From date	To date	Time
Full Season Rep 1	MAN-W18-Start-Standard	Sun 28-Oct-2018	Sat 30-Mar-2019	UTC
Full Season Rep 2	MAN-W18-Live-Standard	Sun 28-Oct-2018	Sat 30-Mar-2019	UTC
Full Season Rep 3	MAN-W19-SOS Report-Standard	Sun 27-Oct-2019	Sat 28-Mar-2020	UTC
	Airport-Season-Branch-Resource	From date	To date	Time
Peak Week Rep 1	MAN-W18-Start-Standard	Mon 04-Mar-2019	Sun 10-Mar-2019	UTC
Peak Week Rep 2	MAN-W18-Live-Standard	Mon 04-Mar-2019	Sun 10-Mar-2019	UTC
Peak Week Rep 3	MAN-W19-SOS Report-Standard	Mon 02-Mar-2020	Sun 08-Mar-2020	UTC