



# WELLINGTON INTERNATIONAL AIRPORT WLG

## W19 Start of Season Report (International Traffic)

Key Statistics	W18 Operated	W19 Start of Season	Percentage Change
Air Transport Movements	2,906	2,978	▲ 2.5%
Total Seats	517,472	528,842	▲ 2.2%
Seats per Passenger ATM	178	178	

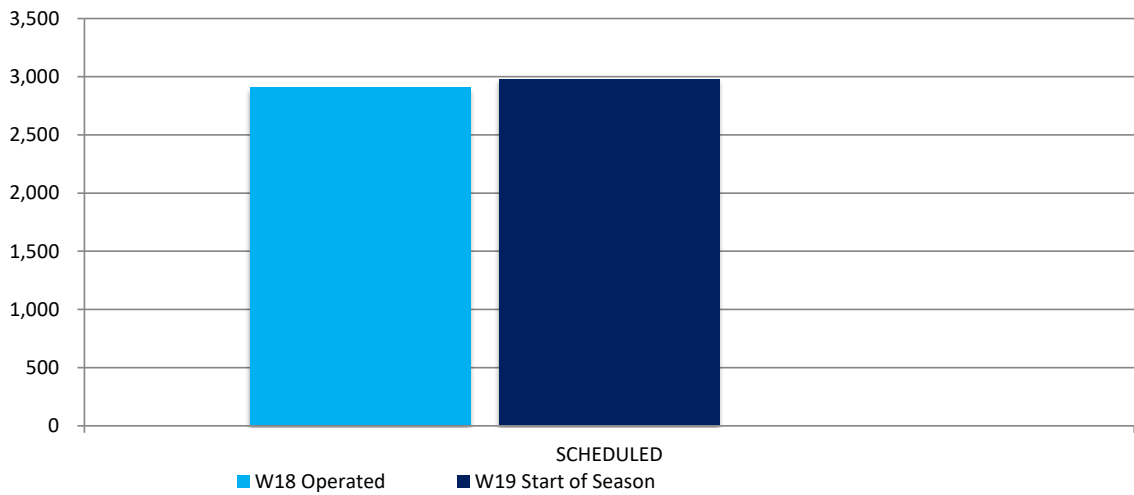
Contents	Page
Movements and Seats by Service Type	2
Peak Week Departure Frequencies by Carrier	3
Airlines by ATM's and Seats	4
Destinations by ATM's and Seats	5
Total Movements by Week	6
International Terminal - Passengers per 60/30 Minutes	7
Glossary	8

Data in this report is current as of 14 October 2019

No warranty whether expressed or implied as to the completeness, accuracy, fitness for purpose, or satisfactory quality is given by ACL regarding the information in this report, which is provided by third parties. Accordingly, ACL excludes all liability with regard to such data.

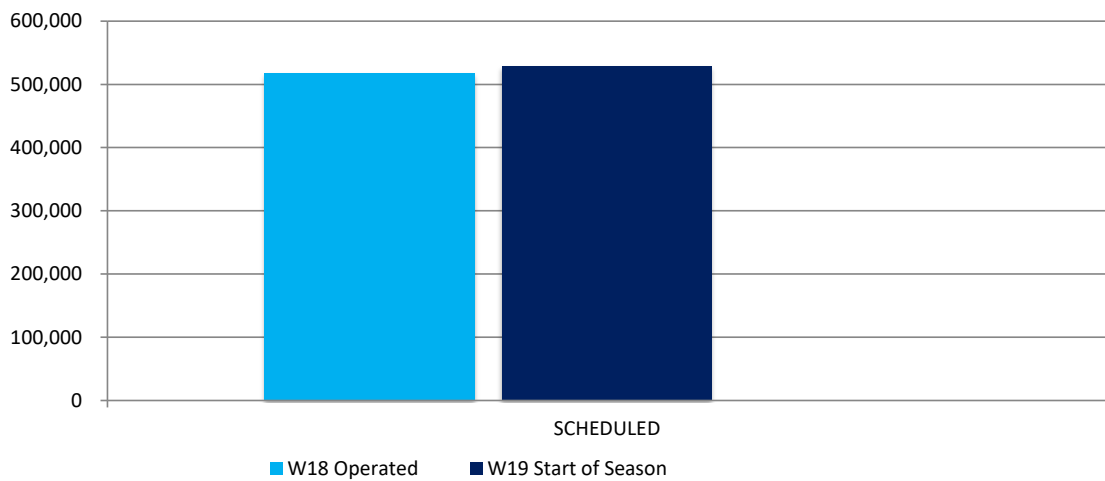
The contents of this report may not be reproduced without the written consent of ACL.

## Full Season ATMs by Service Type



	W18 Operated	W19 Start of Season		% CHANGE
<b>SCHEDULED</b>	2,906	2,978	▲	2.5%
<b>TOTAL</b>	2,906	2,978	▲	2.5%

## Full Season Seats by Service Type



	W18 Operated	W19 Start of Season		% CHANGE
<b>SCHEDULED</b>	517,472	528,842		2.2%
<b>TOTAL</b>	517,472	528,842		2.2%

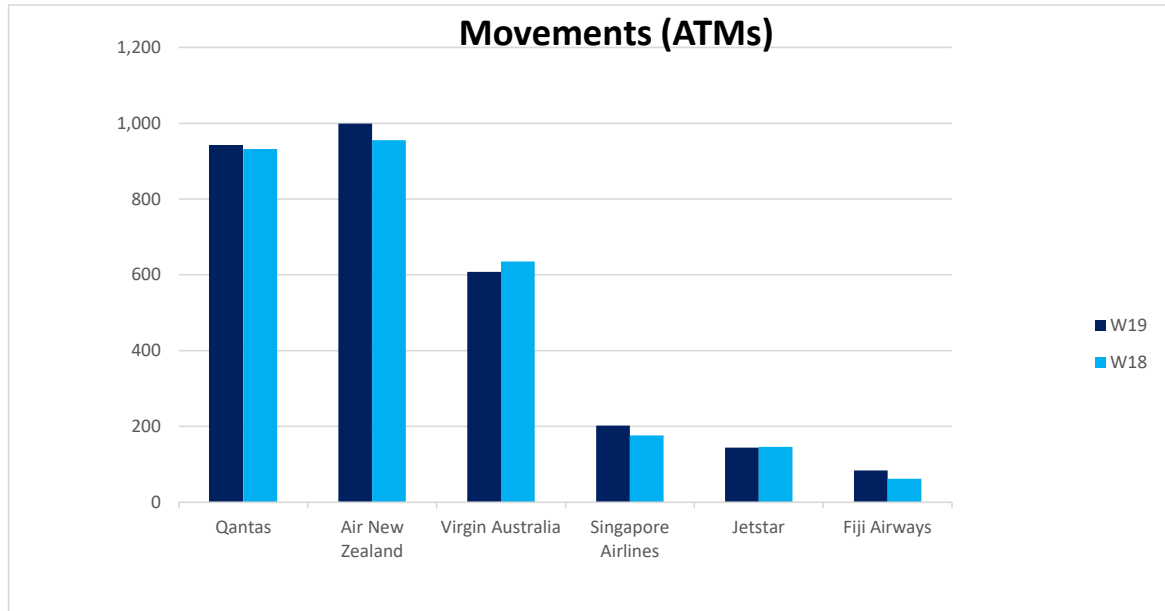
## WELLINGTON INTERNATIONAL AIRPORT

### PEAK WEEK DEPARTURE FREQUENCIES - BY CARRIER

OPERATOR	AIRPORT	W18		W19		SEATS +/-	ATMS +/-		
		SEATS	ATMS	SEATS	ATMS				
FJ	Fiji Airways	NAN	Nadi International	284	2	340	2	56	0
FJ Total				284	2	340	2	56	0
JQ	Jetstar Airways	OOL	Gold Coast Coolangatta	744	4	744	4	0	0
JQ Total				744	4	744	4	0	0
NZ	Air New Zealand	BNE	Brisbane International	840	5	834	5	-6	0
		MEL	Melbourne	1,176	7	1,387	8	211	1
		SYD	Sydney Kingsford Smith	2,016	12	2,004	12	-12	0
NZ Total				4,032	24	4,225	25	193	1
QF	Qantas	MEL	Melbourne	1,218	7	1,392	8	174	1
		SYD	Sydney Kingsford Smith	2,784	16	2,784	16	0	0
QF Total				4,002	23	4,176	24	174	1
SQ	Singapore Airlines	SIN	Singapore Changi	1,064	4	1,265	5	201	1
SQ Total				1,064	4	1,265	5	201	1
VA	Virgin Australia Airlines	BNE	Brisbane International	1,584	9	1,584	9	0	0
		SYD	Sydney Kingsford Smith	1,056	6	880	5	-176	-1
VA Total				2,640	15	2,464	14	-176	-1

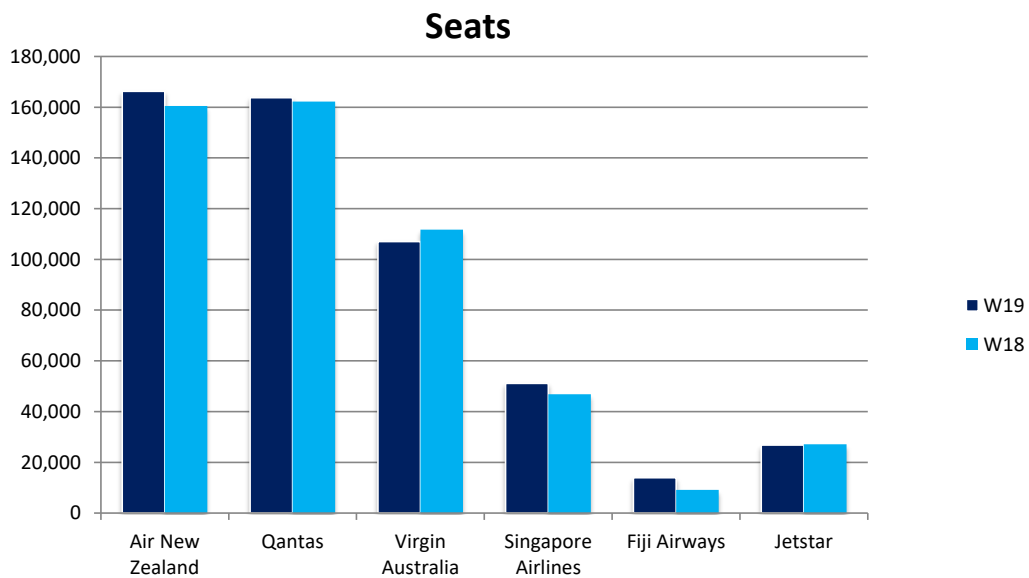
## Airlines by Air Transport Movements (ATMs)

Airline	W19	W18	Diff
Qantas	941	932	1%
Air New Zealand	999	955	5%
Virgin Australia	608	635	-4%
Singapore Airlines	202	176	15%
Jetstar	144	146	-1%
Fiji Airways	84	62	35%



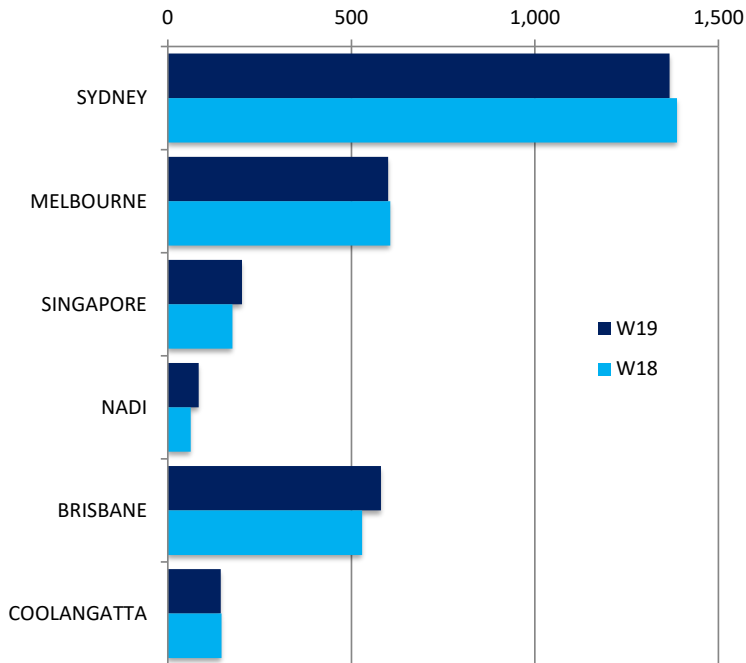
## Airlines by Air Seats

Airline	W19	W18	Diff
Air New Zealand	166,262	160,440	4%
Qantas	163,734	162,168	1%
Virgin Australia	107,008	111,760	-4%
Singapore Airlines	51,158	46,816	9%
Fiji Airways	13,896	9,132	52%
Jetstar	26,784	27,156	-1%



## Air Transport Movements by Destination

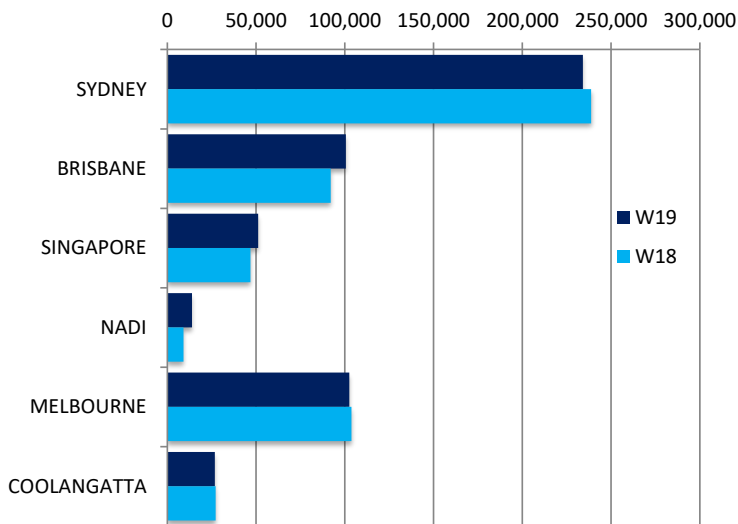
### Movements by Destination



Destination	W19	W18	Diff
SYDNEY	1,367	1,387	-1%
MELBOURNE	600	606	-1%
SINGAPORE	202	176	15%
NADI	84	62	35%
BRISBANE	581	529	10%
COOLANGATTA	144	146	-1%

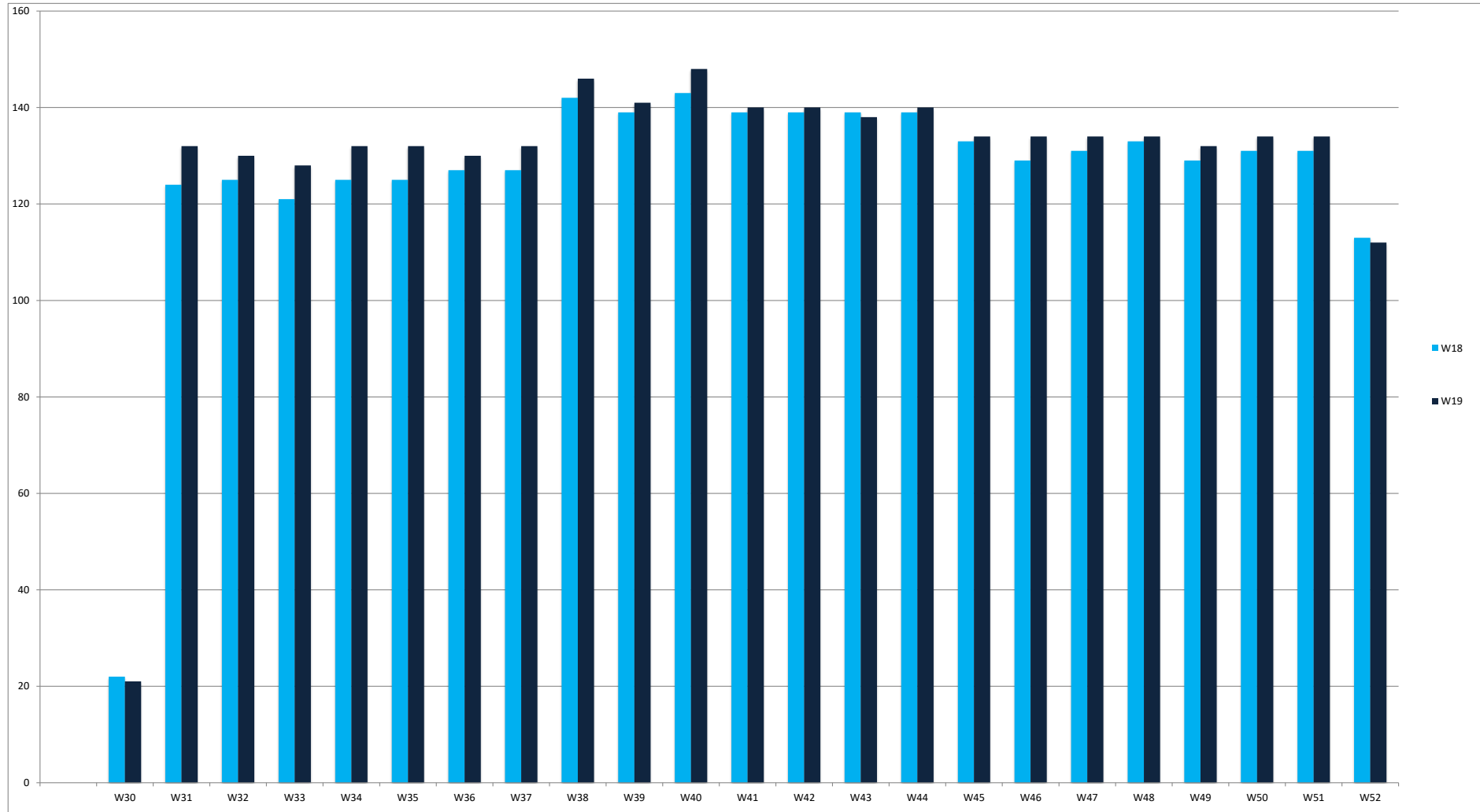
## Air Transport Seats by Destination

### Seats by Destination



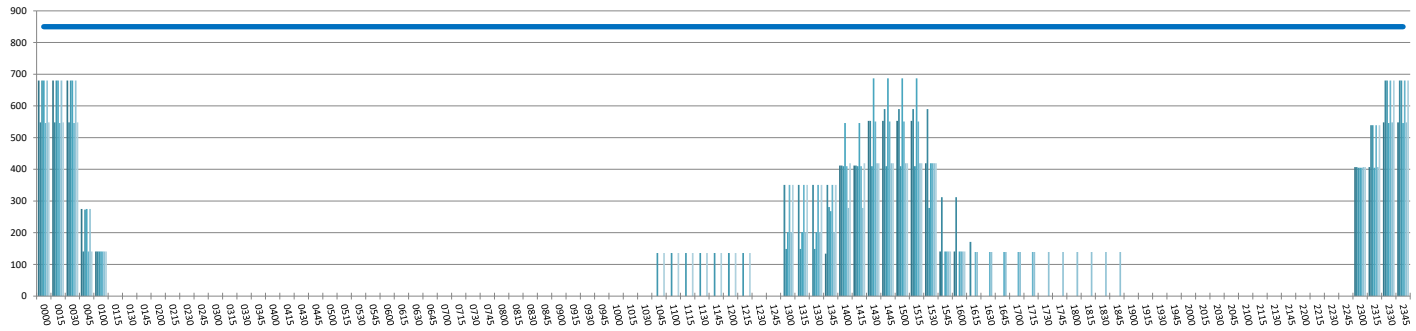
Destination	W19	W18	Diff
SYDNEY	234,052	238,672	-2%
BRISBANE	100,494	92,040	9%
SINGAPORE	51,158	46,816	9%
NADI	13,896	9,132	52%
MELBOURNE	102,458	103,656	-1%
COOLANGATTA	26,784	27,156	-1%

## Air Transport Movements by Week for W18 vs W19 Season Start



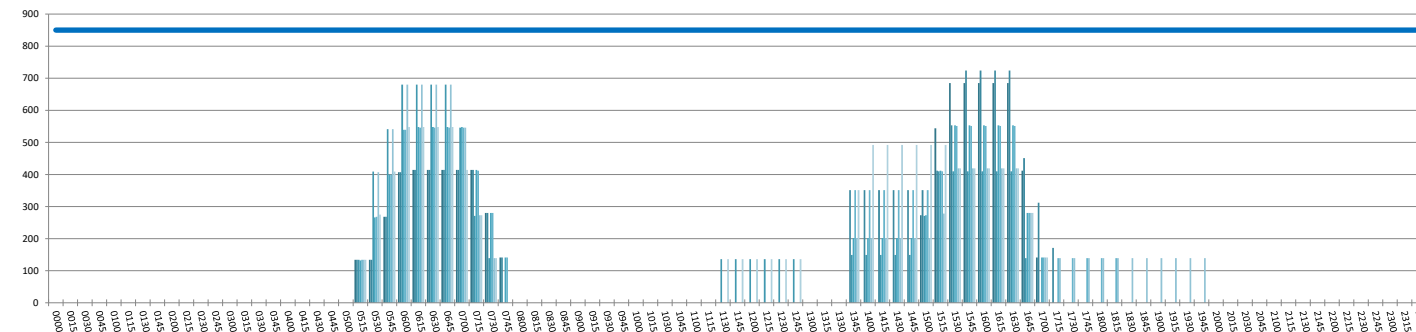
**INTERNATIONAL TERMINAL ARRIVALS UTILISATION PER 60 MINUTES (ROLLING EVERY 15 MINUTES)**

Peak Week Movements per Hour - All times LOCAL



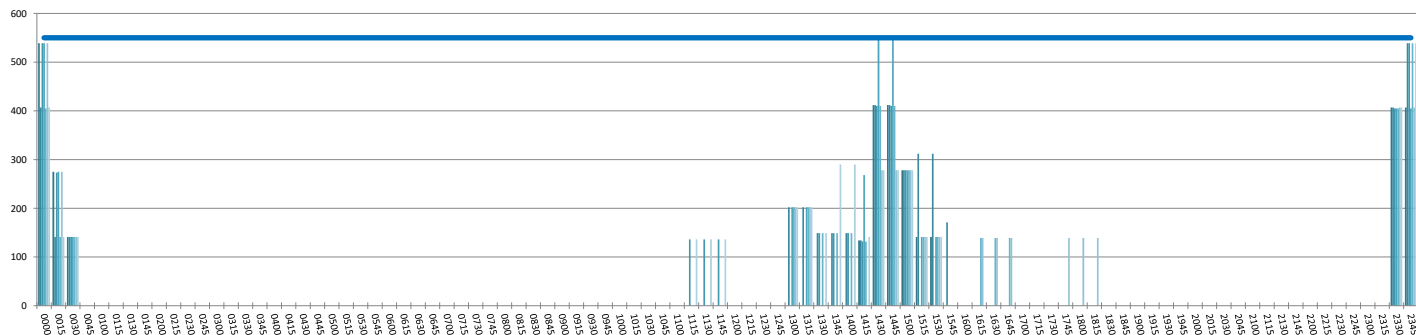
**INTERNATIONAL TERMINAL DEPARTURES UTILISATION PER 60 MINUTES (ROLLING EVERY 15 MINUTES)**

Peak Week Movements per Hour - All times LOCAL



**INTERNATIONAL TERMINAL ARRIVALS UTILISATION PER 30 MINUTES (ROLLING EVERY 15 MINUTES)**

Peak Week Movements per Hour - All times LOCAL



## GLOSSARY OF TERMS

---

<b>Air Transport Movement (ATM)</b>	A scheduled or charter passenger or freight aircraft movement.
<b>Allocation</b>	The allocation of slots such that demand is constrained to fit within declared scheduling limits.
<b>Passenger ATM</b>	A scheduled or charter <u>passenger</u> aircraft movement (ie, excluding all-cargo aircraft movements).
<b>Scheduling Limits</b>	Limiting parameters declared by the Airport Operator used in the coordination process.
<b>Seats</b>	The number of seats based on the aircraft configuration advised by the airline.
<b>Peak Week</b>	30 December 2019 to 05 January 2020
<b>Data Snapshot</b>	All data used for this report was as held 14 October 2019

### GUIDE TO HISTOGRAMS

---

The histograms show the pattern of traffic by time of day against the appropriate scheduling limit. Each time period consist of seven columns representing the days-of-week, Monday through Sunday.