

QUEENSTOWN INTERNATIONAL AIRPORT

ZQN

W19 Start of Season Report

Key Statistics	W18 Operated	W19 Start of Season	Percentage Change
Air Transport Movements	8,294	8,577	▲ 3%
Total Seats	1,351,100	1,403,502	▲ 4%
Seats per Passenger ATM	163	164	

Contents	Page
Airline Rank by ATM's and Seats	2
Aircraft Type Rankings by ATM's and Seats	3
Peak Week Departure Frequencies by Carrier	4
Destination Rankings by ATM's and Seats	5
Runway Peak Week Utilisation	6
Domestic Terminal Peak Week Utilisation	7
International Terminal Peak Week Utilisation	8
Total Terminal Peak Week Utilisation	9
Glossary	10

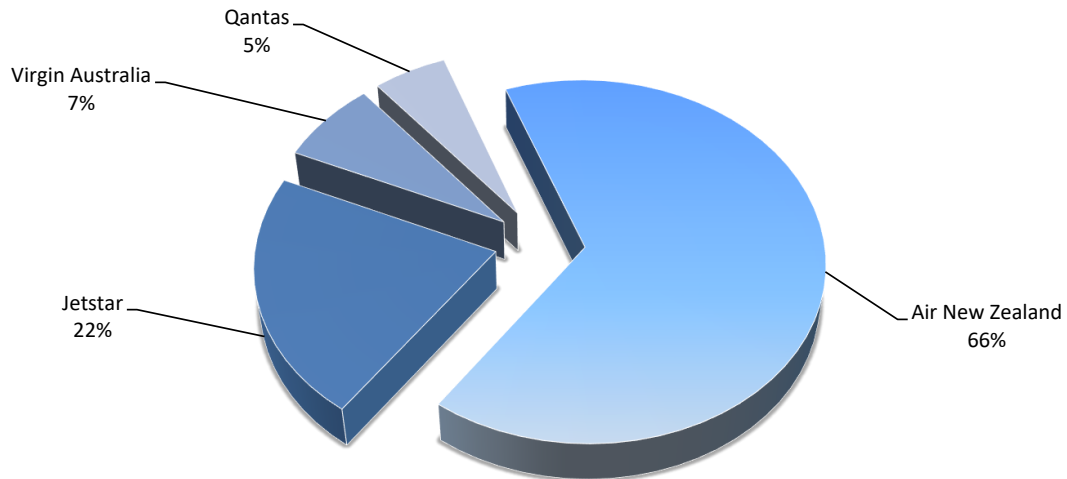
Data in this report is current as of 11 October 2019

No warranty whether expressed or implied as to the completeness, accuracy, fitness for purpose, or satisfactory quality is given by ACL regarding the information in this report, which is provided by third parties. Accordingly, ACL excludes all liability with regard to such data.

The contents of this report may not be reproduced without the written consent of ACL.

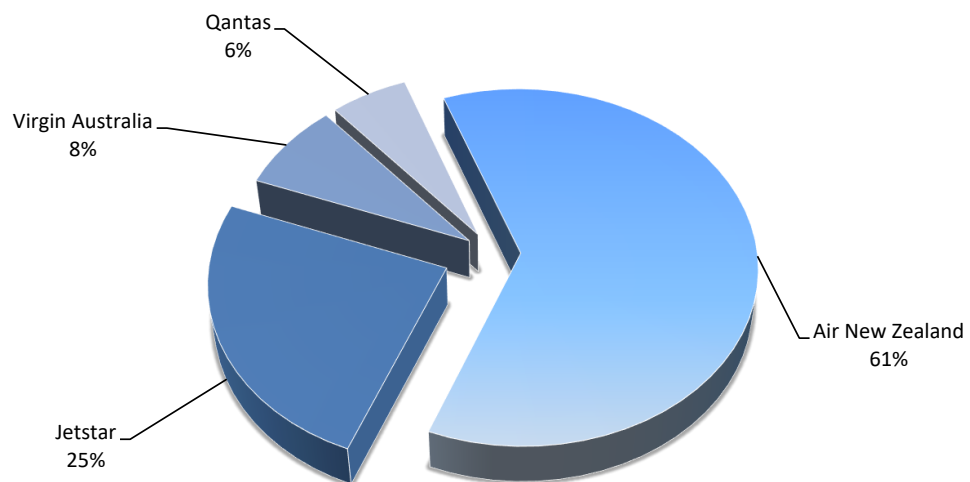
Airlines by Air Transport Movements (ATMs)

Airline	Movements
Air New Zealand	5,615
Jetstar	1,864
Virgin Australia	634
Qantas	464



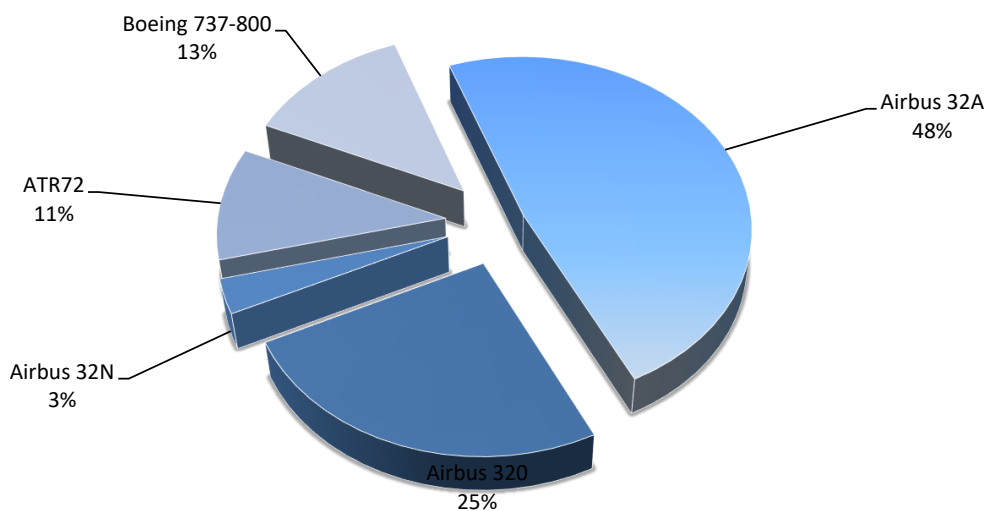
Airlines by Seats

Airline	Seats
Air New Zealand	864,478
Jetstar	346,704
Virgin Australia	111,584
Qantas	80,736



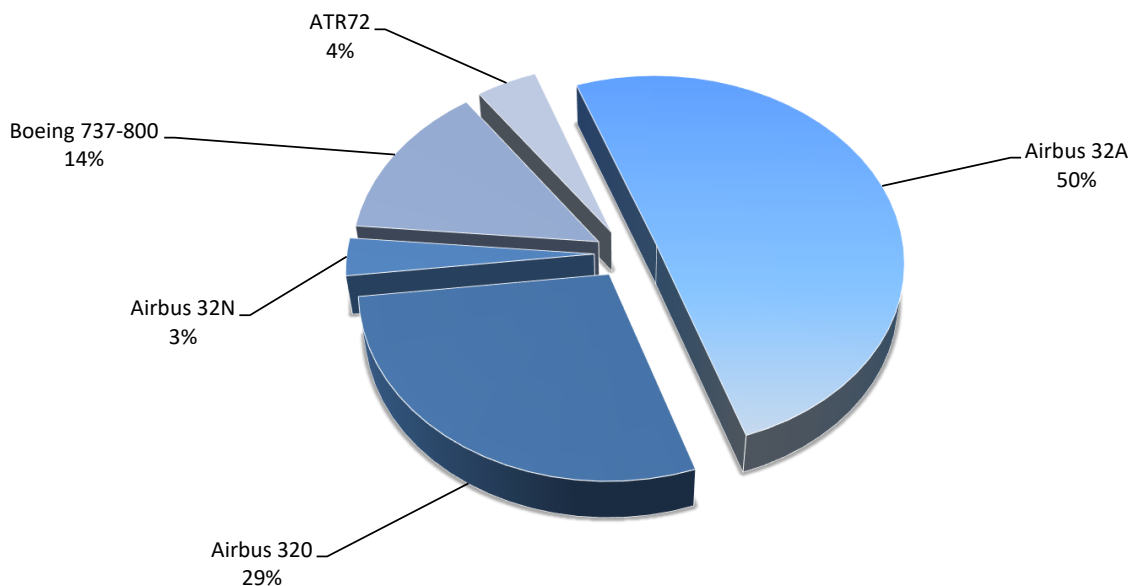
Aircraft Types by Air Transport Movements (ATMs)

Airline	Movements
Airbus 32A	4,131
Airbus 320	2,172
Airbus 32N	276
ATR72	900
Boeing 737-800	1,098



Aircraft Types by seats

Airline	Seats
Airbus 32A	706,230
Airbus 320	398,280
Airbus 32N	45,540
Boeing 737-800	192,320
ATR72	61,132



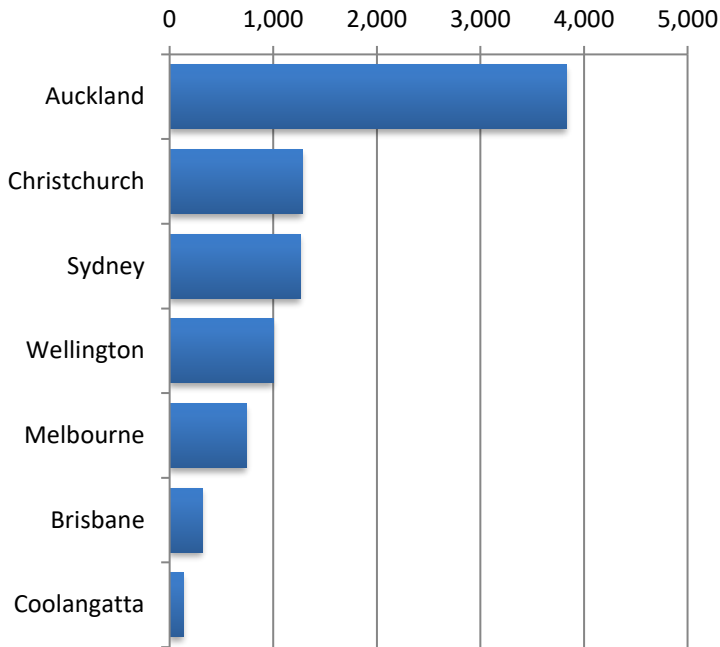
QUEENSTOWN INTERNATIONAL AIRPORT

PEAK WEEK DEPARTURE FREQUENCIES - BY CARRIER

30 Dec 19 to 05 Jan 20

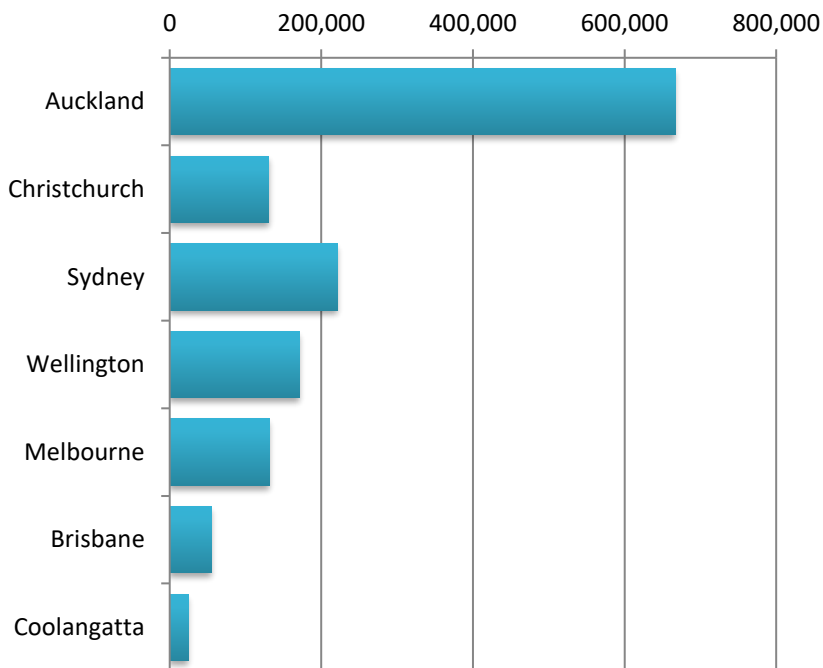
OPERATOR	AIRPORT	W18		W19		SEATS +/-	ATMS +/-		
		SEATS	ATMS	SEATS	ATMS				
JQ	Jetstar Airways	AKL	Auckland International	3,534	19	3,162	17	-372	-2
		MEL	Melbourne	1,302	7	1,860	10	558	3
		OOL	Gold Coast Coolangatta	558	3	558	3	0	0
		SYD	Sydney Kingsford Smith	1,302	7	1,302	7	0	0
		WLG	Wellington International	558	3	1,302	7	744	4
JQ Total				7,254	39	8,184	44	930	5
NZ	Air New Zealand	AKL	Auckland International	16,416	96	15,561	91	-855	-5
		BNE	Brisbane International	672	4	501	3	-171	-1
		CHC	Christchurch International	3,964	28	3,964	28	0	0
		MEL	Melbourne	1,344	8	1,173	7	-171	-1
		SYD	Sydney Kingsford Smith	1,176	7	1,170	7	-6	0
WLG	Wellington International	3,420	20	3,420	20	0	0		
NZ Total				26,992	163	25,789	156	-1,203	-7
QF	Qantas	MEL	Melbourne	0	0	174	1	174	1
		SYD	Sydney Kingsford Smith	1,740	10	2,262	13	522	3
QF Total				1,740	10	2,436	14	696	4
VA	Virgin Australia Airlines	BNE	Brisbane International	1,232	7	1,232	7	0	0
		MEL	Melbourne	880	5	880	5	0	0
		SYD	Sydney Kingsford Smith	1,232	7	1,232	7	0	0
VA Total				3,344	19	3,344	19	0	0

Air Transport Movements by Destination



Destination	ATM'S
Auckland	3,835
Christchurch	1,282
Sydney	1,262
Wellington	1,002
Melbourne	742
Brisbane	320
Coolangatta	132

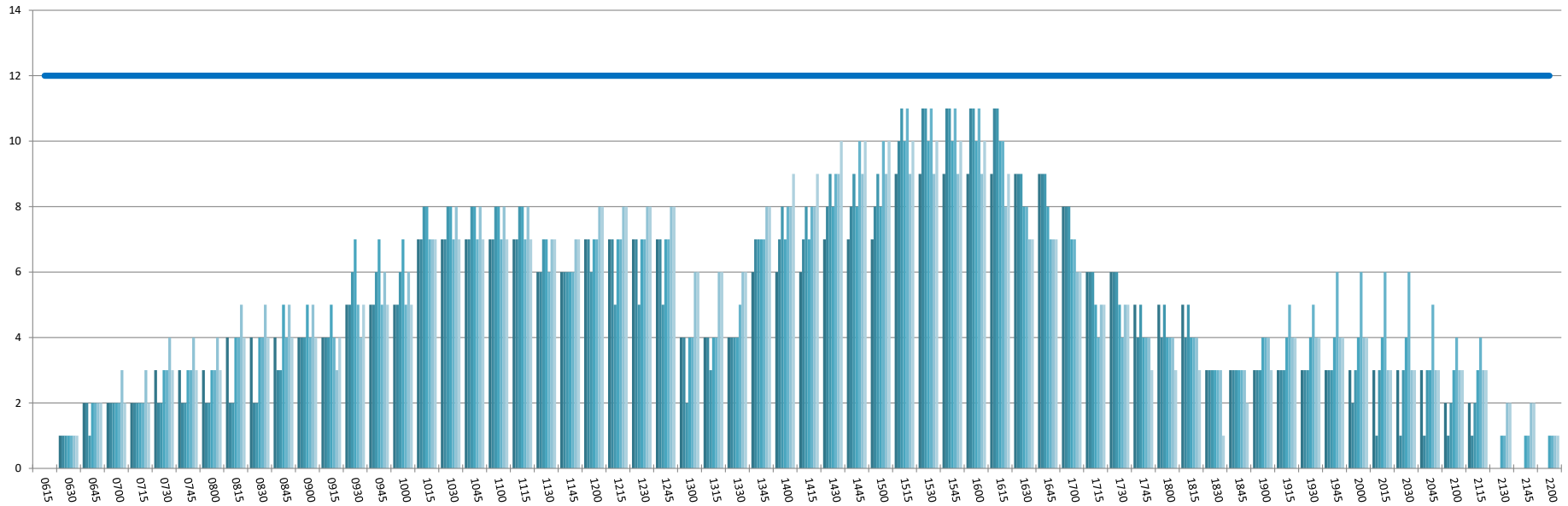
Air Transport Seats by Destination



Destination	SEATS
Auckland	667,455
Christchurch	130,906
Sydney	221,966
Wellington	171,259
Melbourne	132,004
Brisbane	55,124
Coolangatta	24,552

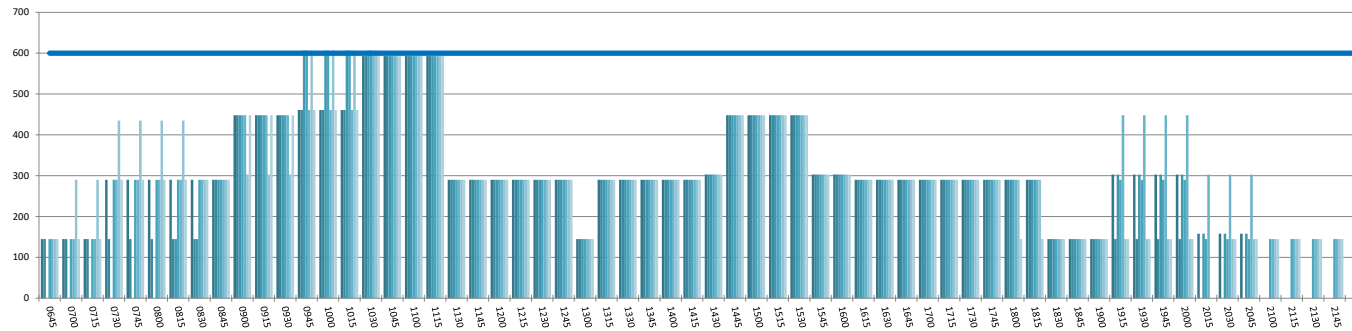
RUNWAY TOTAL UTILISATION PER 60 MINUTES (ROLLING EVERY 15 MINUTES)

Peak Week Movements per Hour - (30 Dec 2019 to 05 Jan 2020) - All times LOCAL



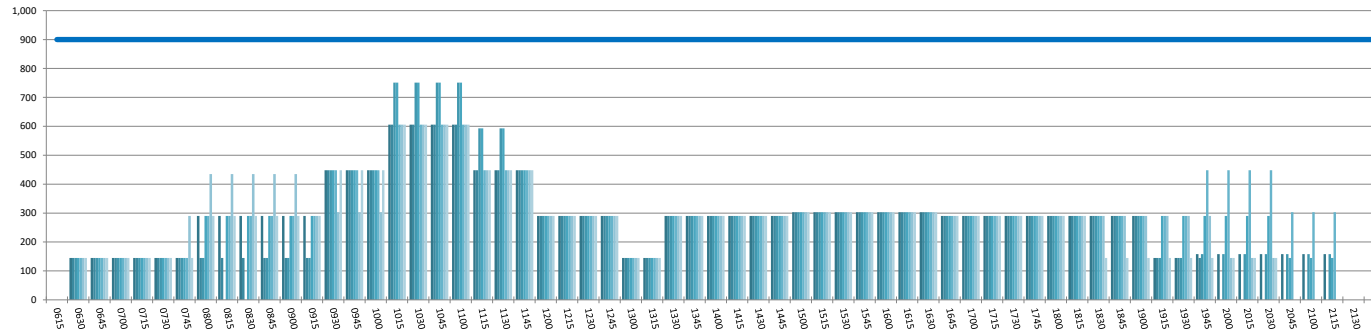
DOMESTIC TERMINAL ARRIVALS UTILISATION PER 60 MINUTES (ROLLING EVERY 15 MINUTES)

Peak Week Movements per Hour - All times LOCAL



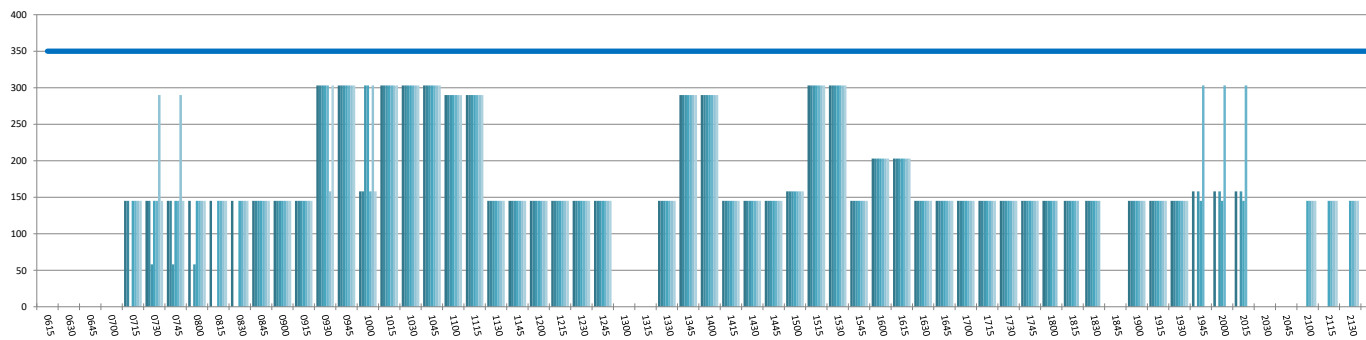
DOMESTIC TERMINAL DEPARTURES UTILISATION PER 60 MINUTES (ROLLING EVERY 15 MINUTES)

Peak Week Movements per Hour - All times LOCAL



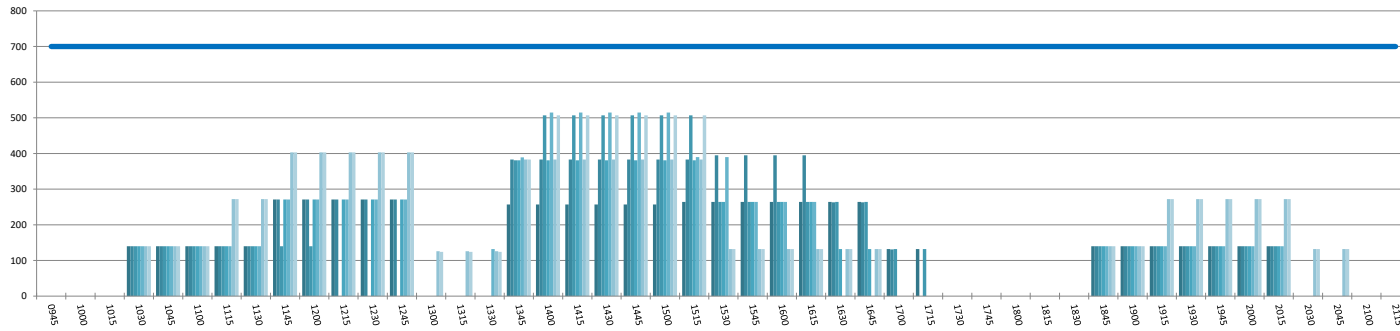
DOMESTIC TERMINAL ARRIVALS UTILISATION PER 30 MINUTES (ROLLING EVERY 15 MINUTES)

Peak Week Movements per Hour - All times LOCAL



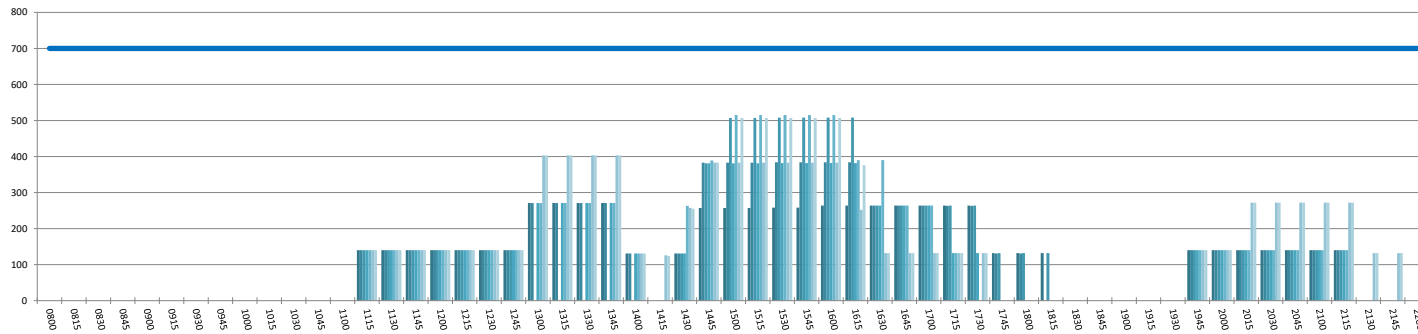
INTERNATIONAL TERMINAL ARRIVALS UTILISATION PER 60 MINUTES (ROLLING EVERY 15 MINUTES)

Peak Week Movements per Hour - All times LOCAL



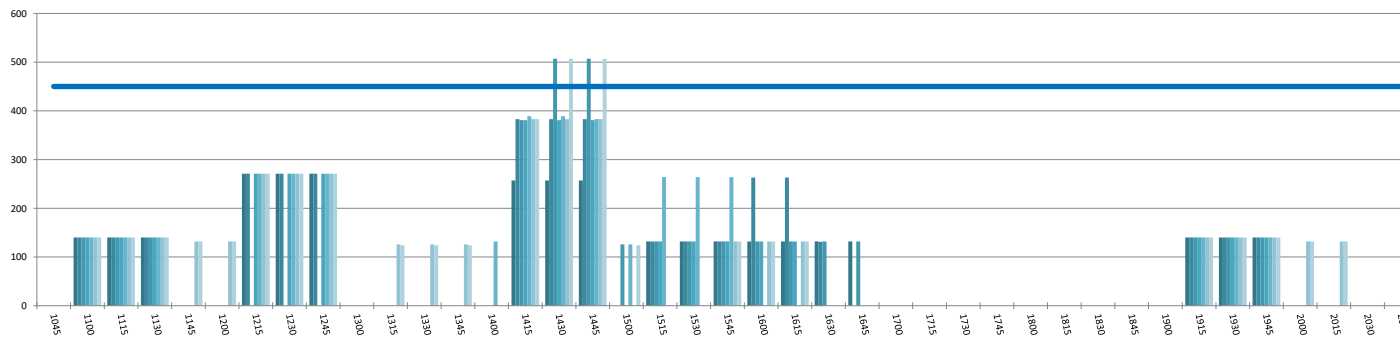
INTERNATIONAL TERMINAL DEPARTURES UTILISATION PER 60 MINUTES (ROLLING EVERY 15 MINUTES)

Peak Week Movements per Hour - All times LOCAL



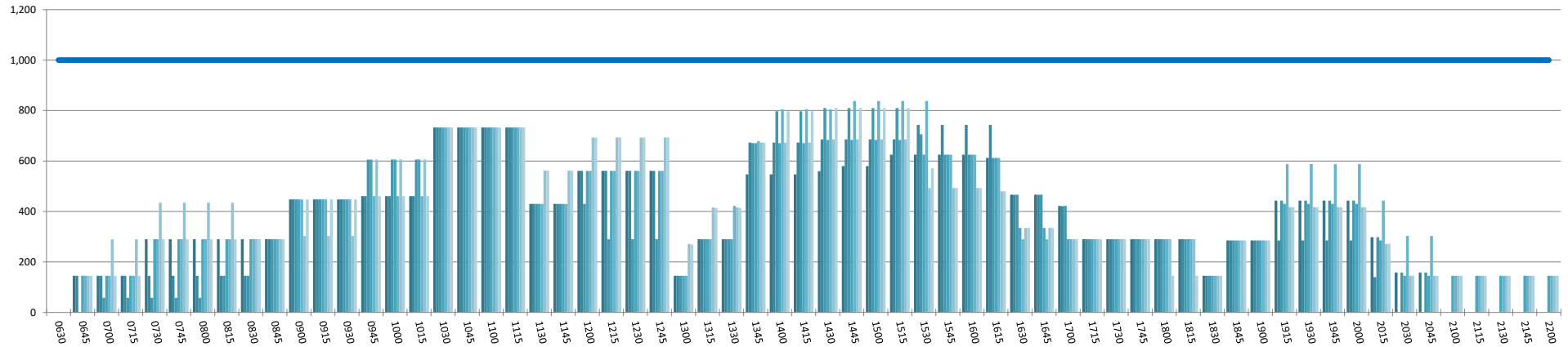
INTERNATIONAL TERMINAL ARRIVALS UTILISATION PER 30 MINUTES (ROLLING EVERY 15 MINUTES)

Peak Week Movements per Hour - All times LOCAL



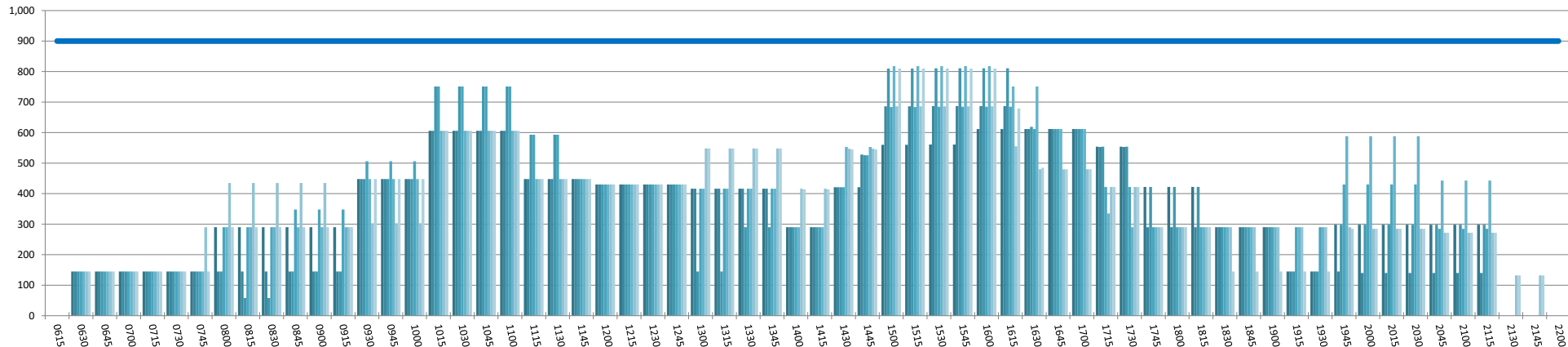
ENTIRE TERMINAL PASSENGER ARRIVALS UTILISATION PER 60 MINUTES (ROLLING EVERY 15 MINUTES)

Peak Week Movements per Hour - All times LOCAL



ENTIRE TERMINAL PASSENGER DEPARTURES UTILISATION PER 60 MINUTES (ROLLING EVERY 15 MINUTES)

Peak Week Movements per Hour - All times LOCAL



GLOSSARY OF TERMS

Air Transport Movement (ATM)	A scheduled or charter passenger or freight aircraft movement.
Allocation	The allocation of slots such that demand is constrained to fit within declared scheduling limits.
Common Travel Area (CTA)	Services to or from the Republic of Ireland and the Channel Islands.
Passenger ATM	A scheduled or charter <u>passenger</u> aircraft movement (ie, excluding all-cargo aircraft movements).
Scheduling Limits	Limiting parameters declared by the Airport Operator used in the coordination process.
Seats	The number of seats based on the aircraft configuration advised by the airline.
Peak Week	30 December 2019 to 05 January 2020
Data Snapshot	All data used for this report was as held 11 October 2019

GUIDE TO HISTOGRAMS

The histograms show the pattern of traffic by time of day against the appropriate scheduling limit. Each time period consist of seven columns representing the days-of-week, Monday through Sunday.