

Dublin Airport (DUB)

Summer 2015 (S15)



Start of Season Report

Report Date: Tue 24-Mar-2015

Headlines

	S15 Start	vs. S14 Start	vs. S14 End
Total Air Transport Movements (Passenger & Freight)	121,326	▲ 9.0%	▲ 9.0%
Total Passenger Air Transport Movements	116,340	▲ 9.4%	▲ 9.6%
Total Passenger Air Transport Movement Seats	19,447,343	▲ 11.0%	▲ 11.3%
Average Seats per Passenger Air Transport Movement	167.2	▲ 1.4%	▲ 1.6%
Percentage of allocated slots cleared as requested (OK)	97.1%		

Contents

Page	Content
2	Runway Scheduling Limits
3	ATM Allocation by Operator (Full season and Peak Week Comparison)
4	Peak Week - Allocation and Slot Adjustment Distribution by Operator
5	Significant Route Changes
6	Full Season - Terminal Analysis
7	Full Season - Aircraft Size Analysis
8	Full Season - Seasonality
9	Peak Week - Hourly Runway Demand
10	Peak Week - Hourly Runway Allocation
11	Peak Week - Hourly Runway Allocation Comparison (S15 Start vs. S14 Start)
12	Peak Week - Hourly Runway Allocation Comparison (S15 Start vs. S14 End)
13	Peak Week Histogram - Departure Passengers (T60/10 Clock Hour) - 1 - All Operators
14	Peak Week Histogram - Departure Passengers (T60/10) - 1 - All Operators
15	Peak Week Histogram - Departure Passengers (T120/10) - 1 - All Operators
16	Peak Week Histogram - Departure Passengers (T60/10 Clock Hour) - 2 - All Operators
17	Peak Week Histogram - Departure Passengers (T60/10) - 2 - All Operators
18	Peak Week Histogram - Departure Passengers (T120/10) - 2 - All Operators
19	Peak Week Histogram - Arrival Passengers (T60/10 Clock Hour) - 1 - All Operators
20	Peak Week Histogram - Arrival Passengers (T60/10) - 1 - All Operators
21	Peak Week Histogram - Arrival Passengers (T60/10 Clock Hour) - 2 - All Operators
22	Peak Week Histogram - Arrival Passengers (T60/10) - 2 - All Operators
23	Glossary

S14 scheduling season runs from Sun 30-Mar-2014 to Sat 25-Oct-2014 (210 days).

S15 scheduling season runs from Sun 29-Mar-2015 to Sat 24-Oct-2015 (210 days).

Disclaimer

No warranty whether expressed or implied as to the completeness, accuracy, fitness for purpose, or satisfactory quality is given by ACL regarding the information in this report, which is provided by third parties. Accordingly, ACL excludes all liability with regard to such data.

The contents of this report may not be reproduced without the written consent of ACL.

Runway Scheduling Limits



Declared Hourly Movement Capacity

S14 Arrivals								Change: S14 to S15							S15 Arrivals								
Hour	Mon	Tue	Wed	Thu	Fri	Sat	Sun	Hour	Mon	Tue	Wed	Thu	Fri	Sat	Sun	Hour	Mon	Tue	Wed	Thu	Fri	Sat	Sun
UTC	1	2	3	4	5	6	7	UTC	1	2	3	4	5	6	7	UTC	1	2	3	4	5	6	7
05	23	23	23	23	23	23	23	05								05	23	23	23	23	23	23	23
06	20	20	20	20	20	20	20	06								06	20	20	20	20	20	20	20
07	25	25	25	25	25	25	25	07								07	25	25	25	25	25	25	25
08	22	22	22	22	22	22	22	08								08	22	22	22	22	22	22	22
09	23	23	23	23	23	23	23	09								09	23	23	23	23	23	23	23
10	27	27	27	27	27	27	27	10	#####							10	27	27	27	27	27	27	27
11	27	27	27	27	27	27	27	11								11	27	27	27	27	27	27	27
12	23	23	23	23	23	23	23	12								12	23	23	23	23	23	23	23
13	27	27	27	27	27	27	27	13								13	27	27	27	27	27	27	27
14	23	23	23	23	23	23	23	14								14	23	23	23	23	23	23	23
15	26	26	26	26	26	26	26	15								15	26	26	26	26	26	26	26
16	25	25	25	25	25	25	25	16								16	25	25	25	25	25	25	25
17	23	23	23	23	23	23	23	17								17	23	23	23	23	23	23	23
18	23	23	23	23	23	23	23	18								18	23	23	23	23	23	23	23
19	23	23	23	23	23	23	23	19								19	23	23	23	23	23	23	23
20	25	25	25	25	25	25	25	20								20	25	25	25	25	25	25	25
21	30	30	30	30	30	30	30	21								21	30	30	30	30	30	30	30
22	26	26	26	26	26	26	26	22								22	26	26	26	26	26	26	26

S14 Departures								Change: S14 to S15							S15 Departures								
Hour	Mon	Tue	Wed	Thu	Fri	Sat	Sun	Hour	Mon	Tue	Wed	Thu	Fri	Sat	Sun	Hour	Mon	Tue	Wed	Thu	Fri	Sat	Sun
UTC	1	2	3	4	5	6	7	UTC	1	2	3	4	5	6	7	UTC	1	2	3	4	5	6	7
05	33	33	33	33	33	33	33	05								05	33	33	33	33	33	33	33
06	30	30	30	30	30	30	30	06								06	30	30	30	30	30	30	30
07	25	25	25	25	25	25	25	07								07	25	25	25	25	25	25	25
08	29	29	29	29	29	29	29	08								08	29	29	29	29	29	29	29
09	24	24	24	24	24	24	24	09								09	24	24	24	24	24	24	24
10	27	27	27	27	27	27	27	10								10	27	27	27	27	27	27	27
11	28	28	28	28	28	28	28	11								11	28	28	28	28	28	28	28
12	26	26	26	26	26	26	26	12								12	26	26	26	26	26	26	26
13	24	24	24	24	24	24	24	13								13	24	24	24	24	24	24	24
14	26	26	26	26	26	26	26	14								14	26	26	26	26	26	26	26
15	24	24	24	24	24	24	24	15								15	24	24	24	24	24	24	24
16	28	28	28	28	28	28	28	16								16	28	28	28	28	28	28	28
17	27	27	27	27	27	27	27	17								17	27	27	27	27	27	27	27
18	24	24	24	24	24	24	24	18								18	24	24	24	24	24	24	24
19	22	22	22	22	22	22	22	19								19	22	22	22	22	22	22	22
20	22	22	22	22	22	22	22	20								20	22	22	22	22	22	22	22
21	25	25	25	25	25	25	25	21								21	25	25	25	25	25	25	25
22	25	25	25	25	25	25	25	22								22	25	25	25	25	25	25	25

S14 Totals								Change: S14 to S15							S15 Totals								
Hour	Mon	Tue	Wed	Thu	Fri	Sat	Sun	Hour	Mon	Tue	Wed	Thu	Fri	Sat	Sun	Hour	Mon	Tue	Wed	Thu	Fri	Sat	Sun
UTC	1	2	3	4	5	6	7	UTC	1	2	3	4	5	6	7	UTC	1	2	3	4	5	6	7
05	40	40	40	40	40	40	40	05								05	40	40	40	40	40	40	40
06	41	41	41	41	41	41	41	06								06	41	41	41	41	41	41	41
07	42	42	42	42	42	42	42	07								07	42	42	42	42	42	42	42
08	42	42	42	42	42	42	42	08								08	42	42	42	42	42	42	42
09	41	41	41	41	41	41	41	09								09	41	41	41	41	41	41	41
10	45	45	45	45	45	45	45	10								10	45	45	45	45	45	45	45
11	46	46	46	46	46	46	46	11								11	46	46	46	46	46	46	46
12	46	46	46	46	46	46	46	12								12	46	46	46	46	46	46	46
13	46	46	46	46	46	46	46	13								13	46	46	46	46	46	46	46
14	44	44	44	44	44	44	44	14								14	44	44	44	44	44	44	44
15	44	44	44	44	44	44	44	15								15	44	44	44	44	44	44	44
16	48	48	48	48	48	48	48	16								16	48	48	48	48	48	48	48
17	42	42	42	42	42	42	42	17								17	42	42	42	42	42	42	42
18	37	37	37	37	37	37	37	18								18	37	37	37	37	37	37	37
19	38	38	38	38	38	38	38	19								19	38	38	38	38	38	38	38
20	38	38	38	38	38	38	38	20								20	38	38	38	38	38	38	38
21	36	36	36	36	36	36	36	21								21	36	36	36	36	36	36	36
22	32	32	32	32	32	32	32	22								22	32	32	32	32	32	32	32

Air Transport Movement Allocation by Operator

Comparison between S14 End vs. S15 Start



Operator	FULL SEASON ALLOCATION								PEAK WEEK ALLOCATION							
	S14 ATMs	S15 ATMs	+/- change	S15 Rank	S14 Seats	S15 Seats	+/- change	S15 Rank	S14 ATMs	S15 ATMs	+/- change	S15 Rank	S14 Seats	S15 Seats	+/- change	S15 Rank
Adria Airways	10	-	-10	70	860	-	-860	62	-	-	0	48	-	-	0	40
AER ARANN	4	-	-4	70	288	-	-288	62	-	-	0	48	-	-	0	40
Aer Linus	47,104	48,673	1,569	1	7,313,114	7,623,288	310,174	1	1,616	1,710	94	1	251,408	268,095	16,687	1
Air Canada	307	466	159	25	86,574	131,412	44,838	16	12	20	8	19	3,384	5,640	2,256	15
Air Contractors	433	461	28	26	63,486	67,767	4,281	22	22	23	1	48	3,234	3,381	147	20
Air Europa	82	40	-42	44	15,472	7,440	-8,032	36	4	3	-1	42	744	558	-186	34
Air France	2,168	2,150	-18	6	199,710	198,550	-1,160	11	72	72	0	6	6,650	6,650	0	11
Air Malta	4	-	-4	70	618	-	-618	62	-	-	0	48	-	-	0	40
Air Mediterranee	16	-	-16	70	3,253	-	-3,253	62	-	-	0	48	-	-	0	40
Air Moldova	90	110	20	40	10,260	12,540	2,280	33	4	4	0	39	456	456	0	35
Air Nostrum	16	14	-2	52	1,600	1,400	-200	48	-	-	0	48	-	-	0	40
Air Transat	199	156	-43	37	45,771	38,844	-6,927	28	8	6	-2	36	1,742	1,494	-248	28
Air Explore	4	-	-4	70	672	-	-672	62	-	-	0	48	-	-	0	40
Alitalia	9	16	7	51	968	2,880	1,912	42	1	-	-1	48	-	-	0	40
American Airlines	753	752	-1	17	150,750	162,928	12,178	14	28	28	0	10	5,670	6,300	630	12
ARCUS AIR	3	-	-3	70	-	-	0	62	-	-	0	48	-	-	0	40
Arkia	16	17	1	50	4,058	4,505	447	39	-	-	0	48	-	-	0	40
Atlantic Airways	4	-	-4	70	480	-	-480	62	-	-	0	48	-	-	0	40
Atlas Air	2	-	-2	70	504	-	-504	62	-	-	0	48	-	-	0	40
Austrian Airlines	-	6	6	58	-	948	948	50	-	-	0	48	-	-	0	40
Belavia Belarusian Airlines	10	-	-10	70	1,480	-	-1,480	62	2	-	-2	48	296	-	-296	40
Binair	20	-	-20	70	192	-	-192	62	-	-	0	48	-	-	0	40
Blue Air	282	264	-18	35	45,658	42,768	-2,890	27	10	10	0	30	1,620	1,620	0	27
Bluebird Cargo	318	300	-18	30	-	-	0	62	8	10	2	30	-	-	0	40
Bmi Regional	10	4	-6	61	490	196	-294	58	-	-	0	48	-	-	0	40
British Airways	3,088	4,924	1,836	3	431,811	644,508	212,697	42	94	168	74	3	13,080	21,874	8,794	3
CALINA	4	-	-4	70	810	-	-810	62	-	-	0	48	-	-	0	40
Cello Aviation	1	-	-1	70	46	-	-46	62	-	-	0	48	-	-	0	40
Cityjet	3,350	2,425	-925	5	268,030	230,375	-37,655	7	101	86	-15	5	8,605	8,170	-435	8
Corendon Airlines	-	12	12	54	-	2,268	2,268	44	-	-	0	48	-	-	0	40
Croatia Airlines	13	12	-1	54	2,190	2,088	-102	45	1	-	-1	48	162	-	-162	40
Danish Air Transport	7	9	2	56	462	594	132	51	-	-	0	48	-	-	0	40
Delta Airlines	802	802	0	15	166,470	172,720	6,250	13	28	28	0	10	6,300	6,266	-34	13
Eastern Airways	48	40	-8	44	3,358	2,000	-1,358	46	2	-	-2	48	100	-	-100	40
Emirates	530	840	310	12	191,344	302,400	111,056	5	14	28	14	10	5,040	10,080	5,040	5
Enter Air	3	2	-1	64	525	378	-147	54	-	-	0	48	-	-	0	40
Estonian Air	6	1	-5	67	456	88	-368	61	-	-	0	48	-	-	0	40
Ethiopian Airlines	-	218	218	36	-	58,860	58,860	23	-	12	12	27	3,240	3,240	0	21
Etihad Airways	718	840	122	12	230,086	220,080	-10,006	8	20	28	8	10	6,656	7,336	680	9
EuroLOT	10	40	30	70	156	-	-156	62	-	-	0	48	-	-	0	40
European Air Transport (DHL)	355	358	3	27	882	5,880	4,998	37	-	-	0	48	-	-	0	40
Farnair Europe	1	-	-1	70	-	-	0	62	12	12	0	27	-	-	0	40
Federal Express	293	298	5	32	-	35,800	35,800	29	10	10	0	30	-	-	0	40
Finnair	-	358	358	27	-	35,800	35,800	29	-	12	12	27	1,200	1,200	0	29
Fleetair	8	-	-8	70	-	-	0	62	-	-	0	48	-	-	0	40
Flvibe	2,457	3,134	677	4	183,446	244,532	61,086	6	82	106	24	4	6,204	8,268	2,064	7
Freebird Airlines	3	-	-3	70	540	-	-540	62	-	-	0	48	-	-	0	40
GA	1	-	-1	70	6	-	-6	62	-	-	0	48	-	-	0	40
Germania	3	4	1	61	446	592	146	52	-	-	0	48	-	-	0	40
Germanwings	475	480	5	22	56,910	68,280	11,370	21	16	16	0	22	1,920	2,280	360	24
HAVERFORDWEST CHARTER	17	-	-17	70	-	-	0	62	-	-	0	48	-	-	0	40
Iberia	-	494	494	21	-	88,920	88,920	19	-	26	26	16	4,680	4,680	0	17
Iberia Express	464	-	-464	70	83,520	-	-83,520	62	14	-	-14	48	2,520	-	-2,520	40
Icelandair	18	14	-4	52	3,294	2,562	-732	43	-	-	0	48	-	-	0	40
Jet2.com	-	4	4	61	-	592	592	52	-	-	0	48	-	-	0	40
Jetstar Airways	39	6	-33	58	6,640	1,020	-5,620	49	-	-	0	48	-	-	0	40
JOTA AVIATION	15	-	-15	70	-	-	0	62	-	-	0	48	-	-	0	40
Livingston Compagnia Aerea	23	24	1	48	4,090	4,320	230	40	-	2	2	43	360	360	0	37
Loganair	-	6	6	58	-	232	232	56	-	-	0	48	-	-	0	40
LOT Polish Airlines	-	1	1	67	-	112	112	62	-	-	0	48	-	-	0	40
Lufthansa	1,462	1,660	198	8	273,913	309,084	35,171	4	50	56	6	7	9,378	10,416	1,038	4
Luxair	243	472	229	24	18,798	34,744	15,946	30	8	14	6	24	608	1,176	568	30
Malmö Aviation	-	2	2	64	-	224	224	57	-	-	0	48	-	-	0	40
Mistral Air	31	58	27	42	5,040	9,304	4,264	34	2	4	2	39	336	632	296	33
Monarch Airlines	1	-	-1	70	358	-	-358	62	-	-	0	48	-	-	0	40
Neos	14	-	-14	70	186	-	-186	62	-	-	0	48	-	-	0	40
Niki Luftfahrt	1	-	-1	70	2,234	-	-2,234	62	-	-	0	48	-	-	0	40
Norwegian Air Shuttle	424	478	54	14	86,000	88,908	2,908	20	16	16	0	48	2,900	2,976	76	23
Nouvelair	57	-	-57	70	10,089	-	-10,089	62	2	-	-2	48	354	-	-354	40
Onur Air	96	-	-96	70	19,037	-	-19,037	62	4	-	-4	48	798	-	-798	40
RVL Aviation	1,243	1,020	-223	11	-	-	0	62	2	2	0	43	-	-	0	40
Ryanair	34,689	39,428	4,739	2	6,509,036	7,446,684	937,648	2	1,152	1,408	256	2	215,690	266,112	50,422	2
S7 Airlines	24	24	0	48	3,792	3,792	0	41	2	2	0	43	316	316	0	39
SAS Scandinavian	1,425	1,288	-137	9	234,291	217,490	-16,801	9	50	36	-14	9	7,946	6,088	-1,858	14
Signature	2	-	-2	70	98	-	-98	62	-	-	0	48	-	-	0	40
Small Planet Airlines	-	2	2	64	-	360	360	55	-	-	0	48	-	-	0	40
Smart Wings	37	74	37	41	6,984	13,986	7,002	32	2	4	2	39	378	756	378	32
Smartlynx Airlines Estonia	2	-	-2	70	360	-	-360	62	-	-	0	48	-	-	0	40
Star Air	600	596	-4	19	-	-	0	62	20	20	0	19	-	-	0	40
SunExpress	8	8	0	57	-	1,512	1,512	47	-	-	0	48	-	-	0	40
Swiss International	456	624	168	18	88,920	116,928	28,008	17	14	20	6	19	2,772	3,784	1,012	19
Tarom	222	-	-222	70	25,788	-	-25,788	62	8	-	-8	48	928	-	-928	40
Thomas Cook (Scandinavia)	1	-	-1	70	405	-	-405	62	-	-	0	48	-	-	0	40
Thomas Cook (UK)	2	-	-2	70	450	-	-450	62	-	-	0	48	-	-	0	40
Thomson Airways	567	557	-10	20	107,163	105,273	-1,890	18	25	26	1	16	4,725	4,914	189	16
Titan Airways	11	1	-10	67	1,884	130	-1,754	59	-	-	0	48	-	-	0	40
TNT Airways	275	300	25	30	-	-	0	62	10	10	0	30	-	-	0	40
TRADE AIR	4	-	-4	70	436	-	-436	62	-	-	0	48	-	-	0	40
Transavia	40	43	3	43	7,560	8,127	567	35	5	2	-3	43	945	378	-567	36
Transavia France	2	274	272	34	378	51,786	51,408	24	-	14	14	24	2,646	2,646	0	23
Tunisair	32	32	0	47	4,032	5,184	1,152	38	2	2	0	43	252	324	72	38
Turkish Airlines	723	840	117	12	119,769	132,720	12,951	15	24	28	4	10	3,960	4,424	464	18
ULS Airlines Cargo	1	-	-1	70	-	-	0	62	-	-	0	48	-	-	0	40
United Airlines	944	1,180	236	10	160,533	199,420	38,887	10	42	56	14	7	7,098	9,464	2,366	6
UNIVERSAL AIRWAYS INC	2	-	-2	70	12	-	-12	62	-	-	0	48	-	-	0	40
US Airways	750	760	10	16	160,276	196,080	35,804	12	28	28						

Peak Week - Allocation and Slot Adjustment Distribution by Operator



Schedule: S15 Start

Operator	S15 allocated ATMs	SLOT ADJUSTMENTS (MINUTES OFF REQUESTED TIME)														Requests with NO slot allocated				
		0	5	10	15	20	25	30	35	40	45	50	55	60	>60					
Aer Lingus	1,710	99.2%	0.5%	0.1%	0.1%	0.1%	0.0%	0.0%	0.0%	0.0%	0.0%	0.0%	0.0%	0.0%	0.0%	0.1%	0.0%	0.0%	0.0%	-
Air Canada	20	100.0%	0.0%	0.0%	0.0%	0.0%	0.0%	0.0%	0.0%	0.0%	0.0%	0.0%	0.0%	0.0%	0.0%	0.0%	0.0%	0.0%	0.0%	-
Air Contractors	23	100.0%	0.0%	0.0%	0.0%	0.0%	0.0%	0.0%	0.0%	0.0%	0.0%	0.0%	0.0%	0.0%	0.0%	0.0%	0.0%	0.0%	0.0%	-
Air Europa	3	100.0%	0.0%	0.0%	0.0%	0.0%	0.0%	0.0%	0.0%	0.0%	0.0%	0.0%	0.0%	0.0%	0.0%	0.0%	0.0%	0.0%	0.0%	-
Air France	72	100.0%	0.0%	0.0%	0.0%	0.0%	0.0%	0.0%	0.0%	0.0%	0.0%	0.0%	0.0%	0.0%	0.0%	0.0%	0.0%	0.0%	0.0%	-
Air Moldova	4	100.0%	0.0%	0.0%	0.0%	0.0%	0.0%	0.0%	0.0%	0.0%	0.0%	0.0%	0.0%	0.0%	0.0%	0.0%	0.0%	0.0%	0.0%	-
Air Transat	6	100.0%	0.0%	0.0%	0.0%	0.0%	0.0%	0.0%	0.0%	0.0%	0.0%	0.0%	0.0%	0.0%	0.0%	0.0%	0.0%	0.0%	0.0%	-
Alitalia	-	-	-	-	-	-	-	-	-	-	-	-	-	-	-	-	-	-	-	-
American Airlines	28	96.4%	3.6%	0.0%	0.0%	0.0%	0.0%	0.0%	0.0%	0.0%	0.0%	0.0%	0.0%	0.0%	0.0%	0.0%	0.0%	0.0%	0.0%	-
Belavia Belarusian Airlines	-	-	-	-	-	-	-	-	-	-	-	-	-	-	-	-	-	-	-	-
Blue Air	10	100.0%	0.0%	0.0%	0.0%	0.0%	0.0%	0.0%	0.0%	0.0%	0.0%	0.0%	0.0%	0.0%	0.0%	0.0%	0.0%	0.0%	0.0%	-
Bluebird Cargo	10	100.0%	0.0%	0.0%	0.0%	0.0%	0.0%	0.0%	0.0%	0.0%	0.0%	0.0%	0.0%	0.0%	0.0%	0.0%	0.0%	0.0%	0.0%	-
British Airways	168	99.4%	0.6%	0.0%	0.0%	0.0%	0.0%	0.0%	0.0%	0.0%	0.0%	0.0%	0.0%	0.0%	0.0%	0.0%	0.0%	0.0%	0.0%	-
Cityjet	86	96.5%	2.3%	1.2%	0.0%	0.0%	0.0%	0.0%	0.0%	0.0%	0.0%	0.0%	0.0%	0.0%	0.0%	0.0%	0.0%	0.0%	0.0%	-
Croatia Airlines	-	-	-	-	-	-	-	-	-	-	-	-	-	-	-	-	-	-	-	-
Delta Airlines	28	78.6%	21.4%	0.0%	0.0%	0.0%	0.0%	0.0%	0.0%	0.0%	0.0%	0.0%	0.0%	0.0%	0.0%	0.0%	0.0%	0.0%	0.0%	-
Eastern Airways	40	100.0%	0.0%	0.0%	0.0%	0.0%	0.0%	0.0%	0.0%	0.0%	0.0%	0.0%	0.0%	0.0%	0.0%	0.0%	0.0%	0.0%	0.0%	-
Emirates	28	100.0%	0.0%	0.0%	0.0%	0.0%	0.0%	0.0%	0.0%	0.0%	0.0%	0.0%	0.0%	0.0%	0.0%	0.0%	0.0%	0.0%	0.0%	-
Ethiopian Airlines	12	75.0%	0.0%	0.0%	25.0%	0.0%	0.0%	0.0%	0.0%	0.0%	0.0%	0.0%	0.0%	0.0%	0.0%	0.0%	0.0%	0.0%	0.0%	-
Ethiad Airways	28	75.0%	25.0%	0.0%	0.0%	0.0%	0.0%	0.0%	0.0%	0.0%	0.0%	0.0%	0.0%	0.0%	0.0%	0.0%	0.0%	0.0%	0.0%	-
European Air Transport (DHL)	12	100.0%	0.0%	0.0%	0.0%	0.0%	0.0%	0.0%	0.0%	0.0%	0.0%	0.0%	0.0%	0.0%	0.0%	0.0%	0.0%	0.0%	0.0%	-
Federal Express	10	100.0%	0.0%	0.0%	0.0%	0.0%	0.0%	0.0%	0.0%	0.0%	0.0%	0.0%	0.0%	0.0%	0.0%	0.0%	0.0%	0.0%	0.0%	-
Finnair	12	100.0%	0.0%	0.0%	0.0%	0.0%	0.0%	0.0%	0.0%	0.0%	0.0%	0.0%	0.0%	0.0%	0.0%	0.0%	0.0%	0.0%	0.0%	-
Flybe	106	94.3%	0.0%	5.7%	0.0%	0.0%	0.0%	0.0%	0.0%	0.0%	0.0%	0.0%	0.0%	0.0%	0.0%	0.0%	0.0%	0.0%	0.0%	-
Germanwings	16	87.5%	12.5%	0.0%	0.0%	0.0%	0.0%	0.0%	0.0%	0.0%	0.0%	0.0%	0.0%	0.0%	0.0%	0.0%	0.0%	0.0%	0.0%	-
Iberia Express	26	92.3%	7.7%	0.0%	0.0%	0.0%	0.0%	0.0%	0.0%	0.0%	0.0%	0.0%	0.0%	0.0%	0.0%	0.0%	0.0%	0.0%	0.0%	-
Livingston Compagnia Aerea	2	100.0%	0.0%	0.0%	0.0%	0.0%	0.0%	0.0%	0.0%	0.0%	0.0%	0.0%	0.0%	0.0%	0.0%	0.0%	0.0%	0.0%	0.0%	-
Loganair	-	-	-	-	-	-	-	-	-	-	-	-	-	-	-	-	-	-	-	-
Lufthansa	56	100.0%	0.0%	0.0%	0.0%	0.0%	0.0%	0.0%	0.0%	0.0%	0.0%	0.0%	0.0%	0.0%	0.0%	0.0%	0.0%	0.0%	0.0%	-
Luxair	14	92.9%	7.1%	0.0%	0.0%	0.0%	0.0%	0.0%	0.0%	0.0%	0.0%	0.0%	0.0%	0.0%	0.0%	0.0%	0.0%	0.0%	0.0%	-
Mistral Air	4	100.0%	0.0%	0.0%	0.0%	0.0%	0.0%	0.0%	0.0%	0.0%	0.0%	0.0%	0.0%	0.0%	0.0%	0.0%	0.0%	0.0%	0.0%	-
Norwegian Air Shuttle	16	100.0%	0.0%	0.0%	0.0%	0.0%	0.0%	0.0%	0.0%	0.0%	0.0%	0.0%	0.0%	0.0%	0.0%	0.0%	0.0%	0.0%	0.0%	-
Nouvelair	-	-	-	-	-	-	-	-	-	-	-	-	-	-	-	-	-	-	-	-
Onur Air	-	-	-	-	-	-	-	-	-	-	-	-	-	-	-	-	-	-	-	-
RVL Aviation	2	100.0%	0.0%	0.0%	0.0%	0.0%	0.0%	0.0%	0.0%	0.0%	0.0%	0.0%	0.0%	0.0%	0.0%	0.0%	0.0%	0.0%	0.0%	-
Ryanair	1,408	91.8%	4.1%	0.8%	0.1%	1.0%	0.4%	0.7%	0.1%	0.0%	0.3%	0.0%	0.1%	0.0%	0.0%	0.0%	0.0%	0.0%	0.0%	-
S7 Airlines	2	100.0%	0.0%	0.0%	0.0%	0.0%	0.0%	0.0%	0.0%	0.0%	0.0%	0.0%	0.0%	0.0%	0.0%	0.0%	0.0%	0.0%	0.0%	-
SAS Scandinavian	36	97.2%	2.8%	0.0%	0.0%	0.0%	0.0%	0.0%	0.0%	0.0%	0.0%	0.0%	0.0%	0.0%	0.0%	0.0%	0.0%	0.0%	0.0%	-
Smart Wings	4	100.0%	0.0%	0.0%	0.0%	0.0%	0.0%	0.0%	0.0%	0.0%	0.0%	0.0%	0.0%	0.0%	0.0%	0.0%	0.0%	0.0%	0.0%	-
Star Air	20	100.0%	0.0%	0.0%	0.0%	0.0%	0.0%	0.0%	0.0%	0.0%	0.0%	0.0%	0.0%	0.0%	0.0%	0.0%	0.0%	0.0%	0.0%	-
Swiss International	20	100.0%	0.0%	0.0%	0.0%	0.0%	0.0%	0.0%	0.0%	0.0%	0.0%	0.0%	0.0%	0.0%	0.0%	0.0%	0.0%	0.0%	0.0%	-
Tarom	-	-	-	-	-	-	-	-	-	-	-	-	-	-	-	-	-	-	-	-
Thomson Airways	26	100.0%	0.0%	0.0%	0.0%	0.0%	0.0%	0.0%	0.0%	0.0%	0.0%	0.0%	0.0%	0.0%	0.0%	0.0%	0.0%	0.0%	0.0%	-
TNT Airways	10	100.0%	0.0%	0.0%	0.0%	0.0%	0.0%	0.0%	0.0%	0.0%	0.0%	0.0%	0.0%	0.0%	0.0%	0.0%	0.0%	0.0%	0.0%	-
Transavia	2	100.0%	0.0%	0.0%	0.0%	0.0%	0.0%	0.0%	0.0%	0.0%	0.0%	0.0%	0.0%	0.0%	0.0%	0.0%	0.0%	0.0%	0.0%	-
Transavia France	14	100.0%	0.0%	0.0%	0.0%	0.0%	0.0%	0.0%	0.0%	0.0%	0.0%	0.0%	0.0%	0.0%	0.0%	0.0%	0.0%	0.0%	0.0%	-
Tunisair	2	100.0%	0.0%	0.0%	0.0%	0.0%	0.0%	0.0%	0.0%	0.0%	0.0%	0.0%	0.0%	0.0%	0.0%	0.0%	0.0%	0.0%	0.0%	-
Turkish Airlines	28	100.0%	0.0%	0.0%	0.0%	0.0%	0.0%	0.0%	0.0%	0.0%	0.0%	0.0%	0.0%	0.0%	0.0%	0.0%	0.0%	0.0%	0.0%	-
United Airlines	56	91.1%	0.0%	0.0%	0.0%	0.0%	0.0%	0.0%	0.0%	0.0%	0.0%	0.0%	0.0%	0.0%	0.0%	0.0%	0.0%	0.0%	0.0%	-
US Airways	28	100.0%	0.0%	0.0%	0.0%	0.0%	0.0%	0.0%	0.0%	0.0%	0.0%	0.0%	0.0%	0.0%	0.0%	0.0%	0.0%	0.0%	0.0%	-
Vueling	10	80.0%	20.0%	0.0%	0.0%	0.0%	0.0%	0.0%	0.0%	0.0%	0.0%	0.0%	0.0%	0.0%	0.0%	0.0%	0.0%	0.0%	0.0%	-
West Atlantic Cargo	5	100.0%	0.0%	0.0%	0.0%	0.0%	0.0%	0.0%	0.0%	0.0%	0.0%	0.0%	0.0%	0.0%	0.0%	0.0%	0.0%	0.0%	0.0%	-
Westjet	14	100.0%	0.0%	0.0%	0.0%	0.0%	0.0%	0.0%	0.0%	0.0%	0.0%	0.0%	0.0%	0.0%	0.0%	0.0%	0.0%	0.0%	0.0%	-
White Airways	-	-	-	-	-	-	-	-	-	-	-	-	-	-	-	-	-	-	-	-
Woodgate Aviation	8	100.0%	0.0%	0.0%	0.0%	0.0%	0.0%	0.0%	0.0%	0.0%	0.0%	0.0%	0.0%	0.0%	0.0%	0.0%	0.0%	0.0%	0.0%	-
WOW Air	6	100.0%	0.0%	0.0%	0.0%	0.0%	0.0%	0.0%	0.0%	0.0%	0.0%	0.0%	0.0%	0.0%	0.0%	0.0%	0.0%	0.0%	0.0%	-
TOTAL	4,251	95.1%	2.1%	0.5%	0.1%	0.4%	0.1%	0.2%	0.0%	0.1%	0.1%	0.0%	0.0%	0.0%	0.0%	0.2%				-

Operators with 0 'allocated ATMs' and 0 'Requests with NO slot allocated' in S15, are included in this list due to having slots allocated in either S14 Start or S14 End schedules.

Significant Route Changes



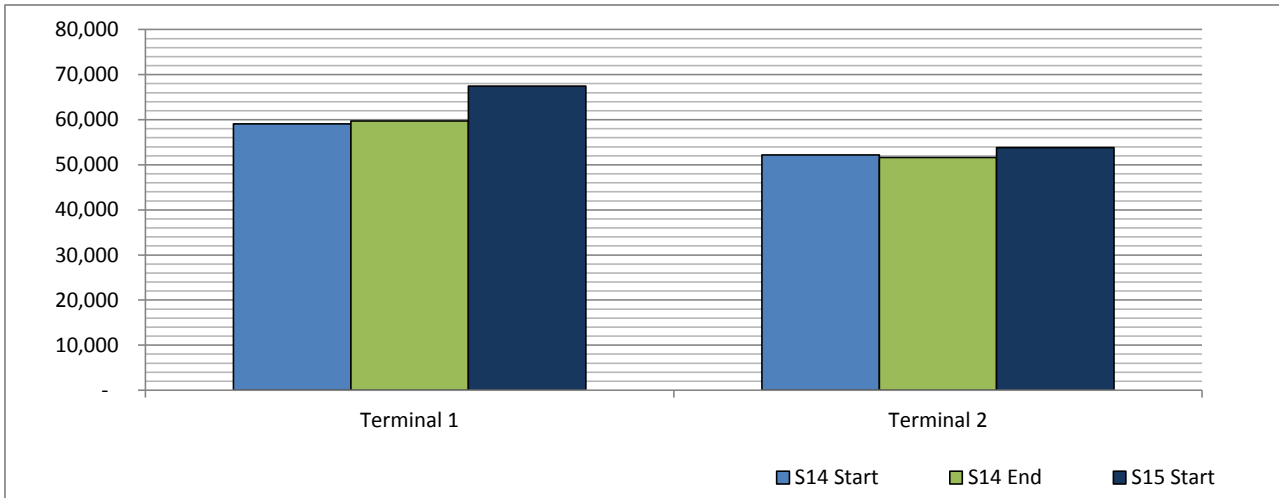
Versus Summer 2014

Operator	Category	Description of change from S14 schedule to S15 schedule
AER ARANN	NEW	Donegal, Doncaster, Nottingham, Newquay
AER ARANN	CANCELLED	Bournemouth, Blackpool, Southend
Aer Lingus	NEW	Bodrum, Monastir, Nante, Washington
Aer Lingus	CHANGE	Increased San Francisco, New York (JFK) , London Gatwick, Paris (CDG),
Aer Lingus	CANCELLED	Stockholm, Hanover
Air Canada	NEW	Additional 4 x week service to Toronto Jun-Sep
British Airways	NEW	London City (W14 continuation)
Cityjet	CHANGE	Increased London City
Cityjet	CANCELLED	Cambridge and Brest
Corendon Airlines	NEW	Antalya day 7 charter
Emirates	NEW	Continuation of two full season dailies from W14
Ethiopian Airlines	CHANGE	5 x week service via Los Angeles to/from Addis
Etihad Airways	NEW	Planning to operate with 2 x A330-200 instead of 1 x A330-220 and 1 x 777-300
Finnair	CHANGE	New daily service Helsinki
Flybe	NEW	New Inverness service to line up with W14, plus new service to BOH. LCY continuation from W14 only until 31May
Flybe	NEW	Donegal
Lufthansa	CANCELLED	Additional mid morning daily rotation (W14 continuation)
Luxair	CHANGE	Day 6 Faro
Onur Air	NEW	
Ryanair	CANCELLED	Brussels, Cologne, Copenhagen, Cardiff and Glasgow
Ryanair	NEW	Increased Milan (BGY), Birmingham, Rome Ciampino, Edinburgh, Krakow, London Gatwick, Madrid, Prague, London Stansted and Berlin. Operating Glasgow International instead of Glasgow Prestwick
Ryanair	CANCELLED	Marseilles, Milan Malpensa
SAS Scandinavian	CANCELLED	Reduced services to Copenhagen
Tarom	CANCELLED	
Thomson Airways	CANCELLED	day 6 Kos
Transavia France	NEW	Jun-Sep service to Paris Orly
United Airlines	NEW	Chicago
Vueling	NEW	Daily to Barcelona
WOW Air	NEW	3 x week to Keflavik

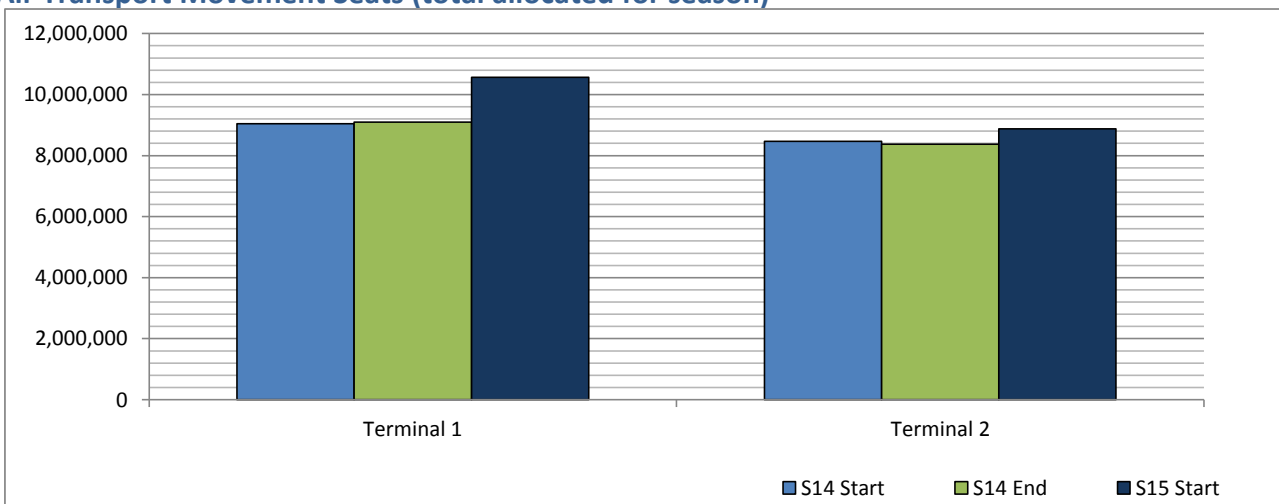
Full Season - Terminal Analysis



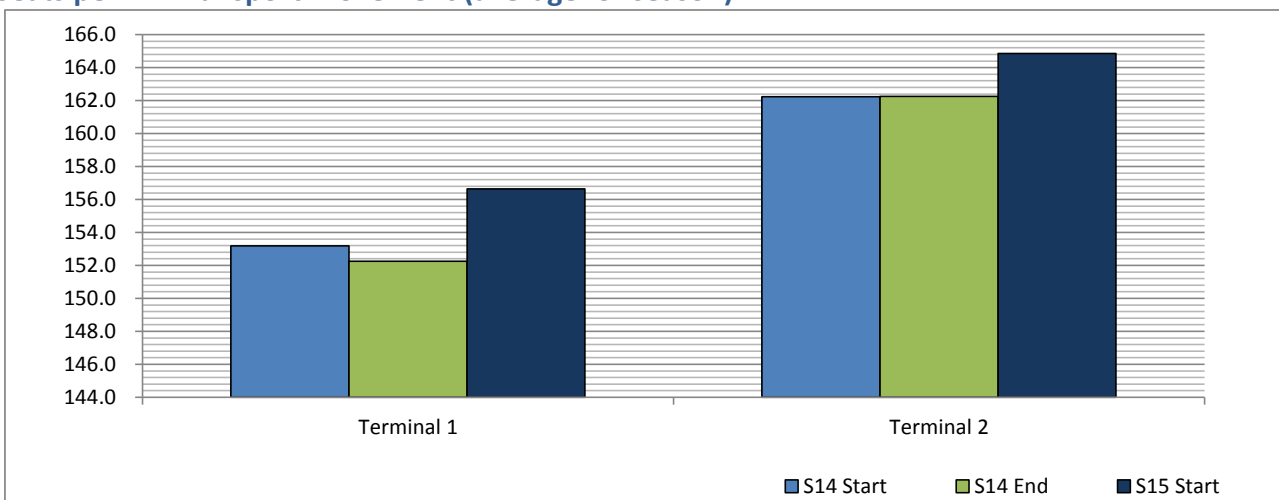
Air Transport Movements (total allocated for season)



Air Transport Movement Seats (total allocated for season)



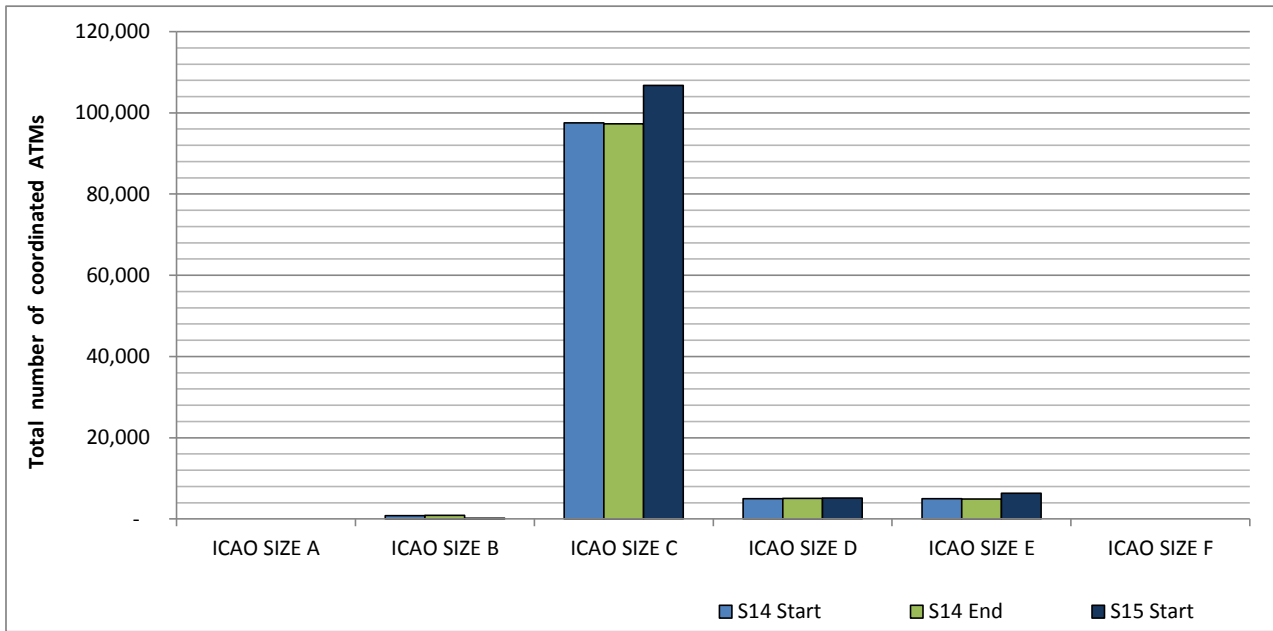
Seats per Air Transport Movement (average for season)



Full Season - Aircraft Size Analysis

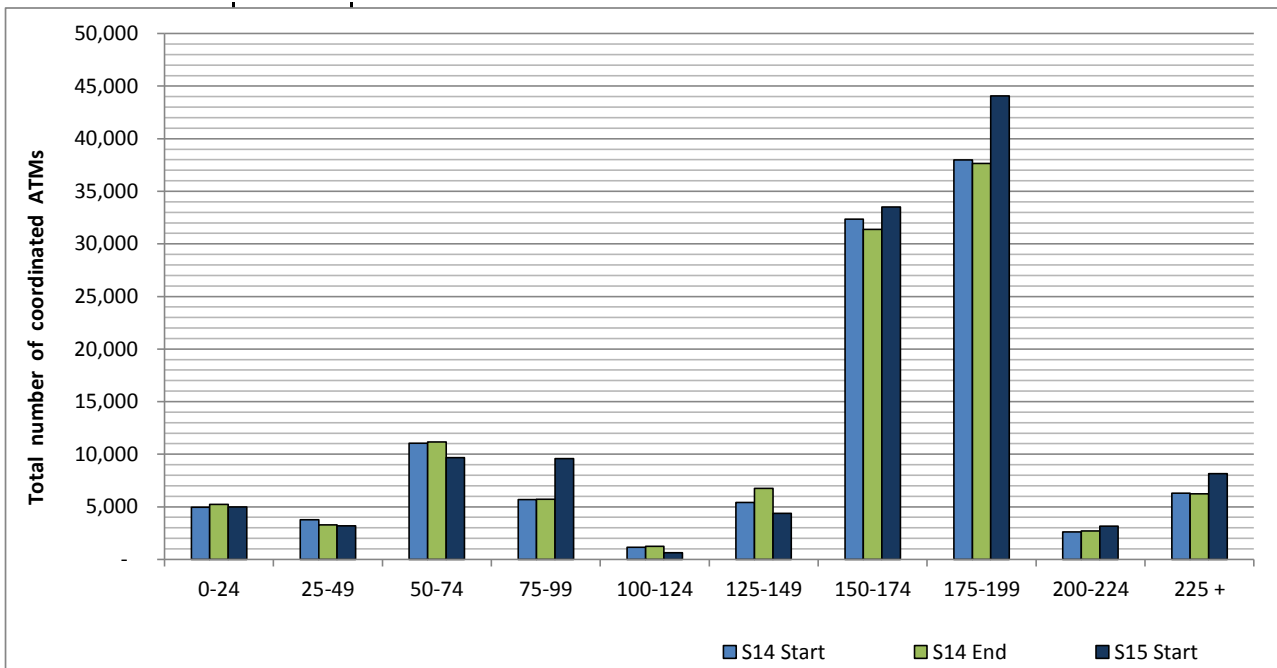


ICAO size designation



Note: See Glossary for definitions of ICAO SIZE groupings

Air Transport Movement seat distribution

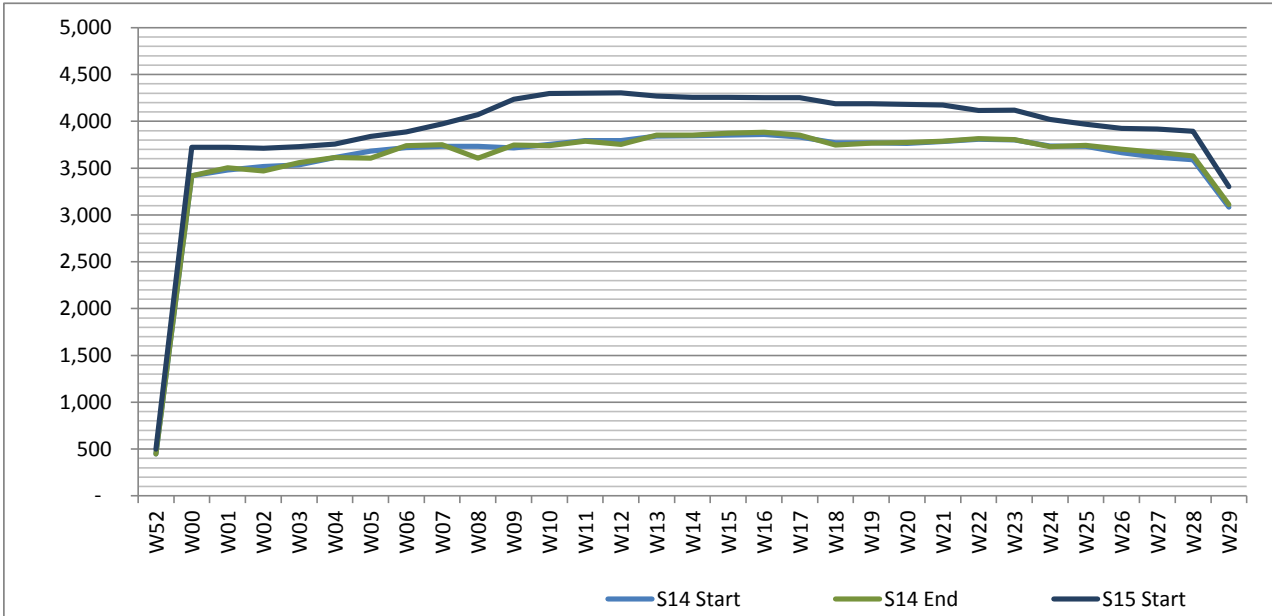


Note: FREIGHT-ONLY services with 0 seats are included in the first seat band '0-24'

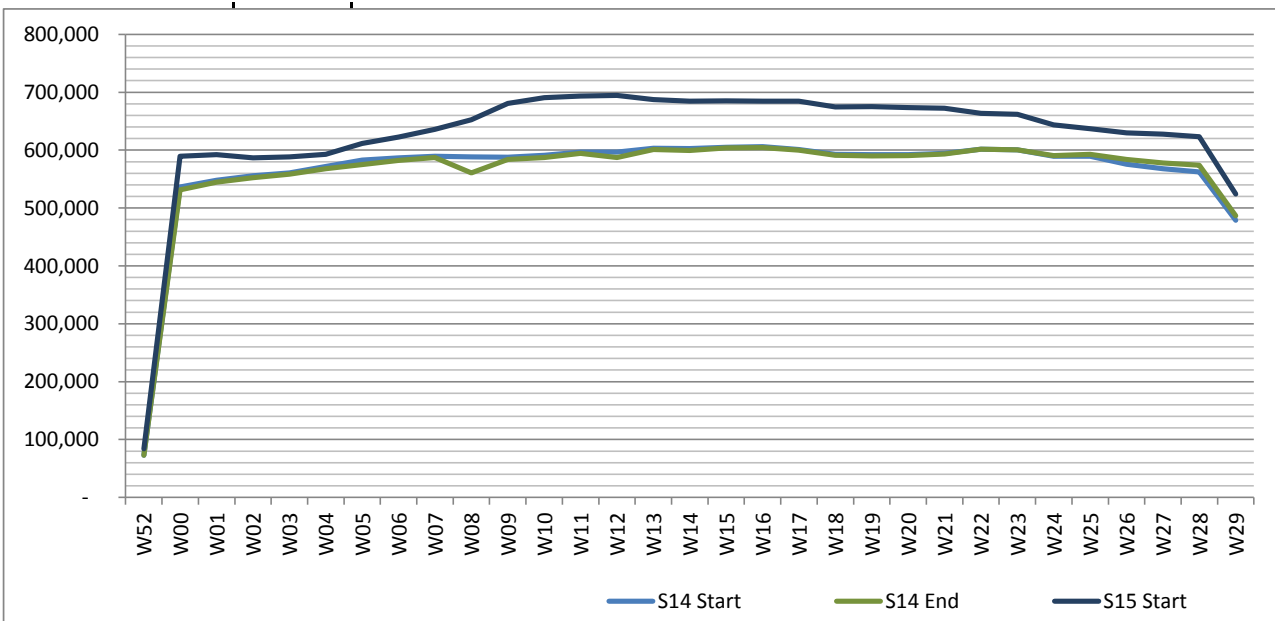
Full Season - Seasonality



Air Transport Movements by week of season



Air Transport Movement Seats by week of season



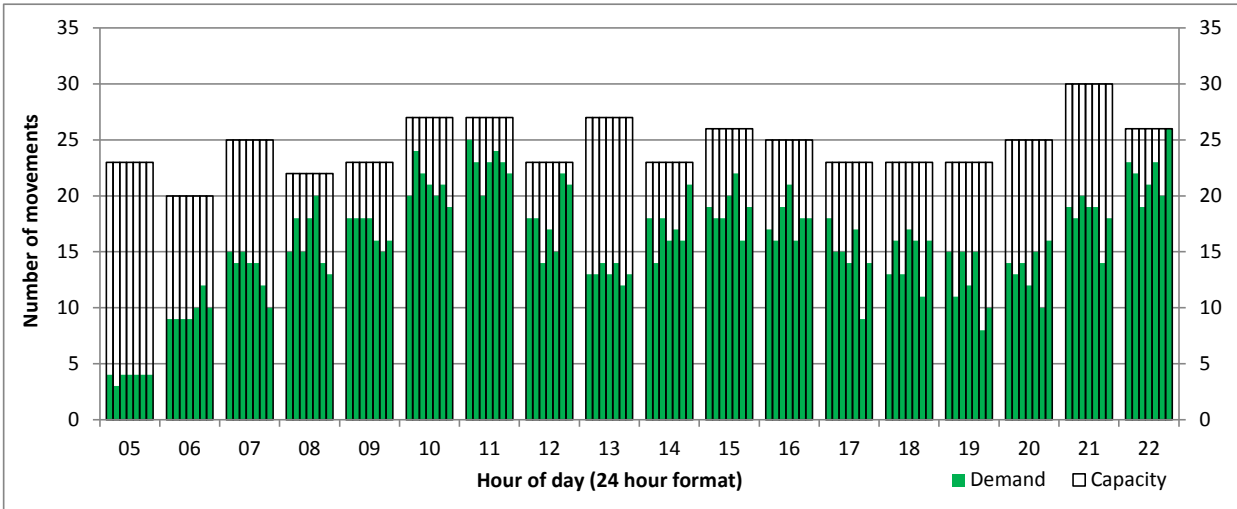
Peak Week - Hourly Runway Demand

Schedule: S15 Start



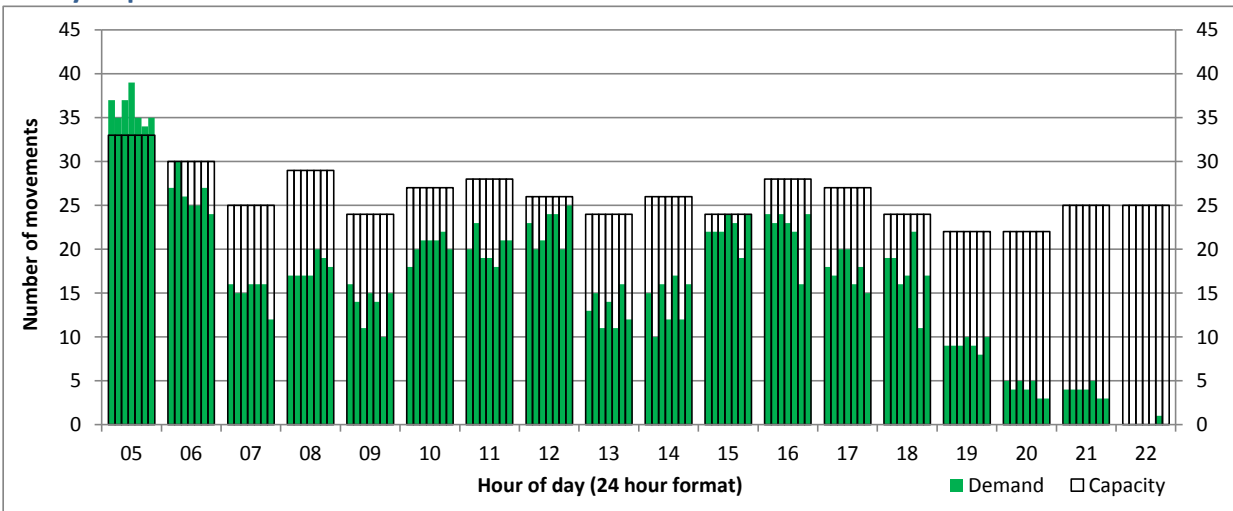
Hourly Arrival Demand

Time: UTC



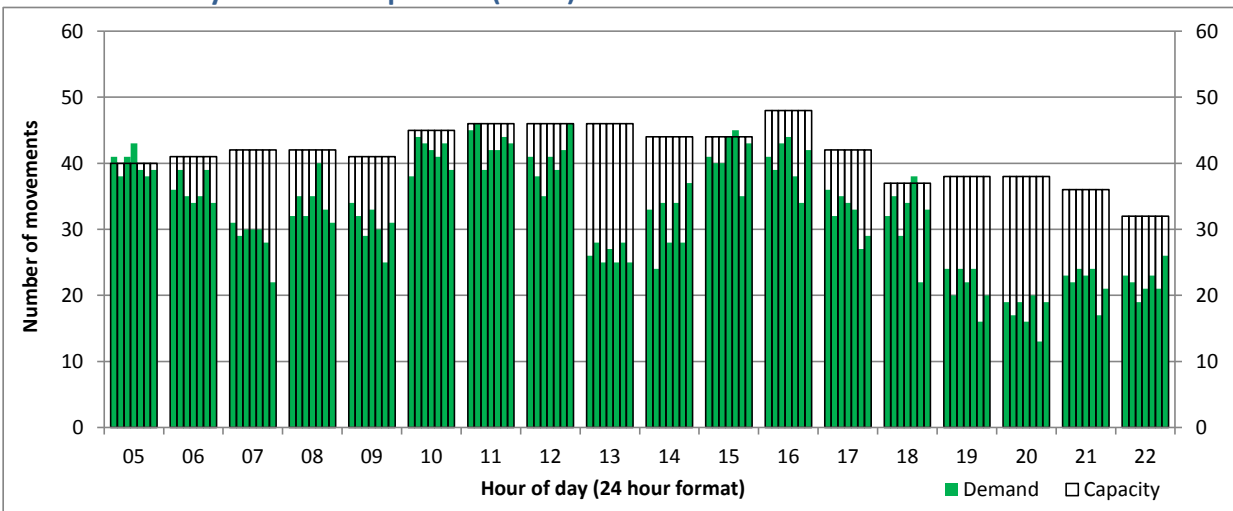
Hourly Departure Demand

Time: UTC



Combined Hourly Arrival & Departure (Total) Demand

Time: UTC



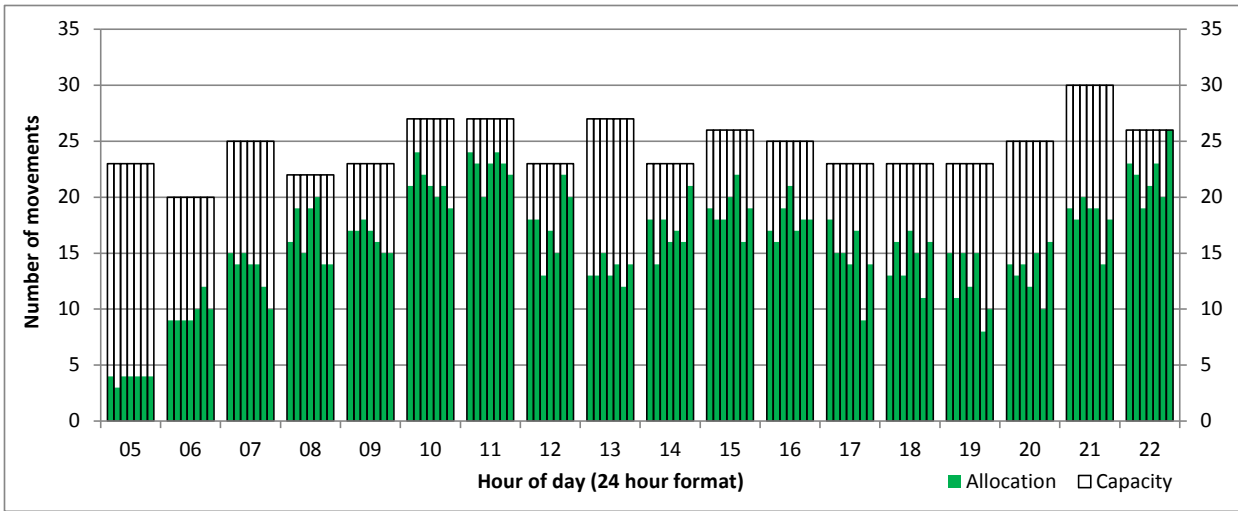
Peak Week - Hourly Runway Allocation

Schedule: S15 Start



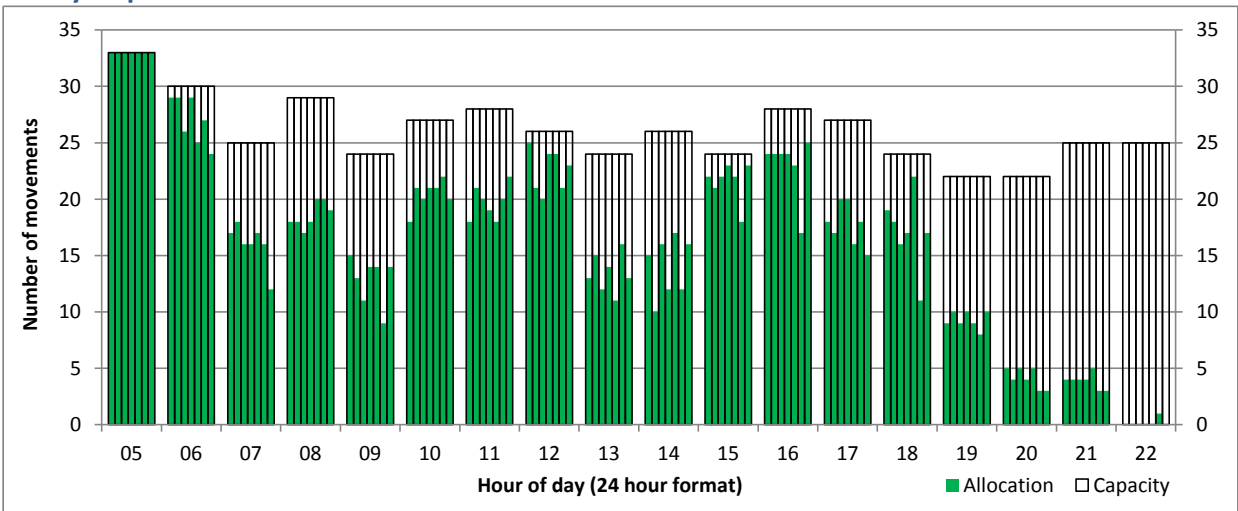
Hourly Arrival Allocation

Time: UTC



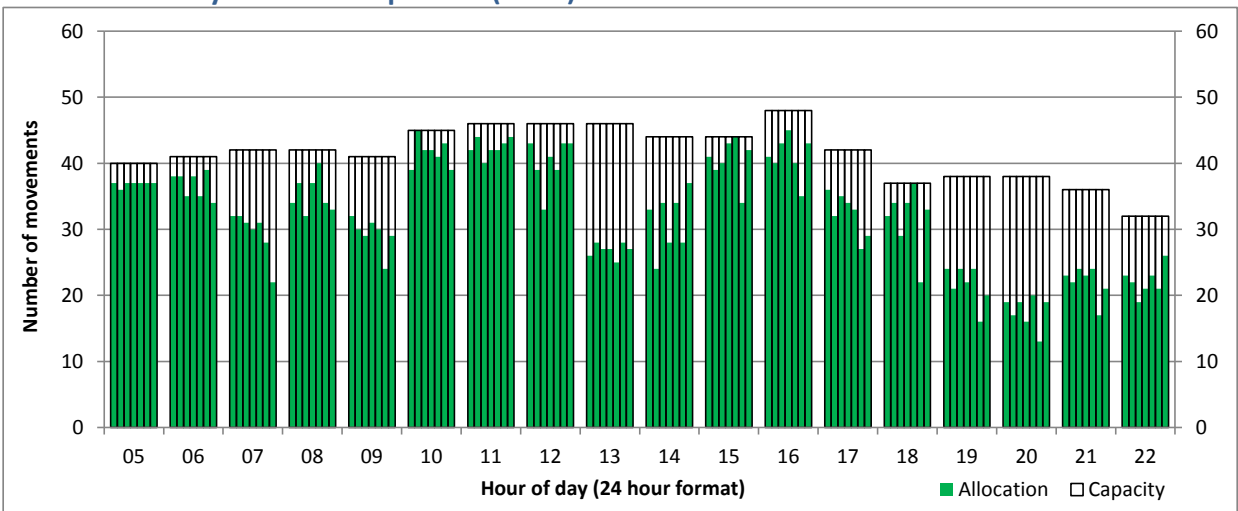
Hourly Departure Allocation

Time: UTC



Combined Hourly Arrival & Departure (Total) Allocation

Time: UTC



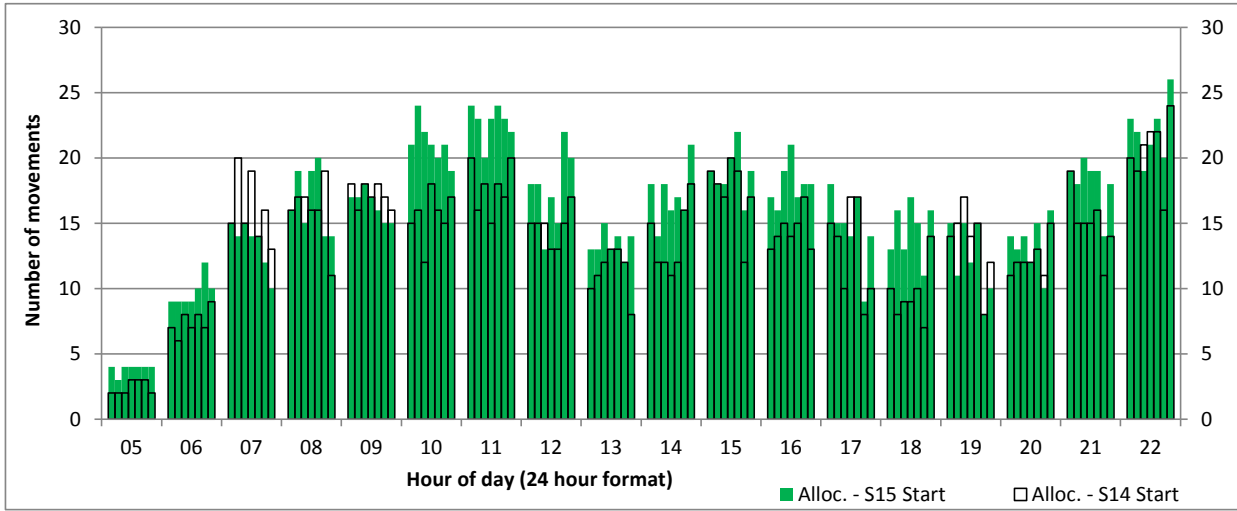
Peak Week - Runway Allocation Comparison

Comparison of S15 Start vs. S14 Start



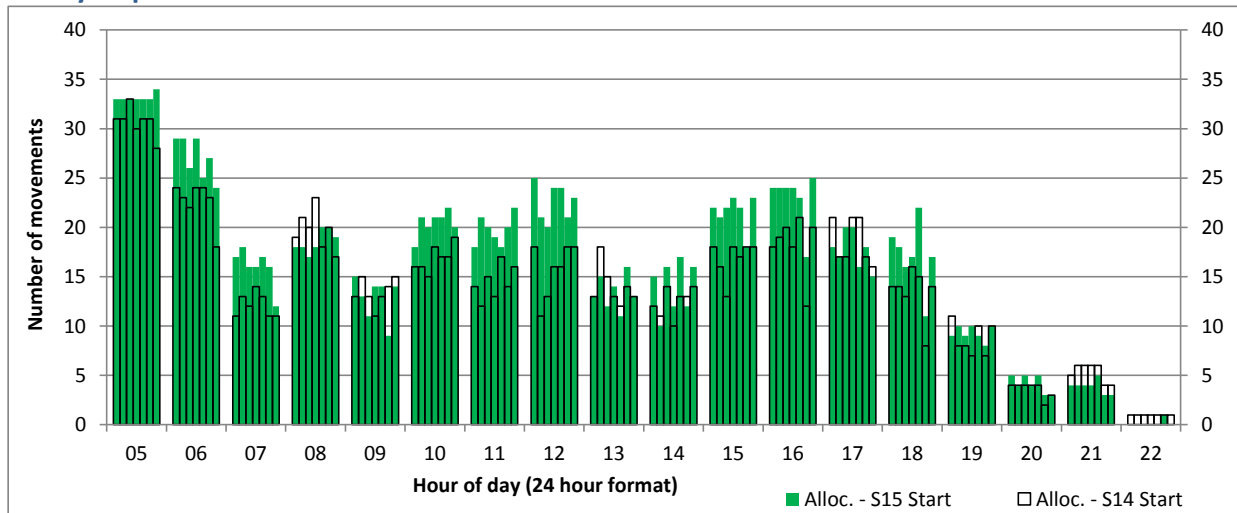
Hourly Arrival Allocation

Time: UTC



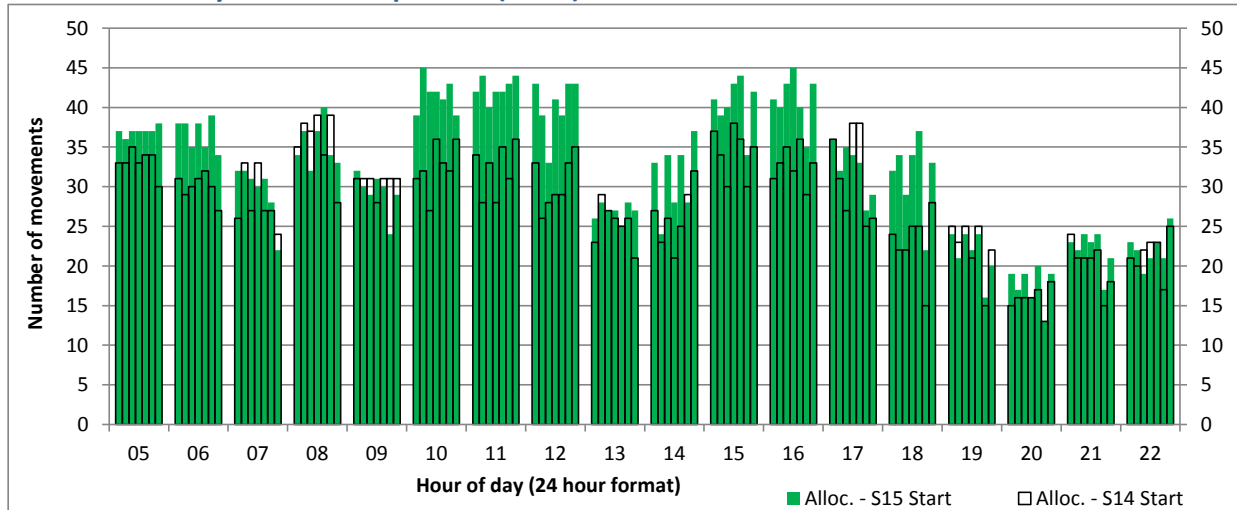
Hourly Departure Allocation

Time: UTC



Combined Hourly Arrival & Departure (Total) Allocation

Time: UTC



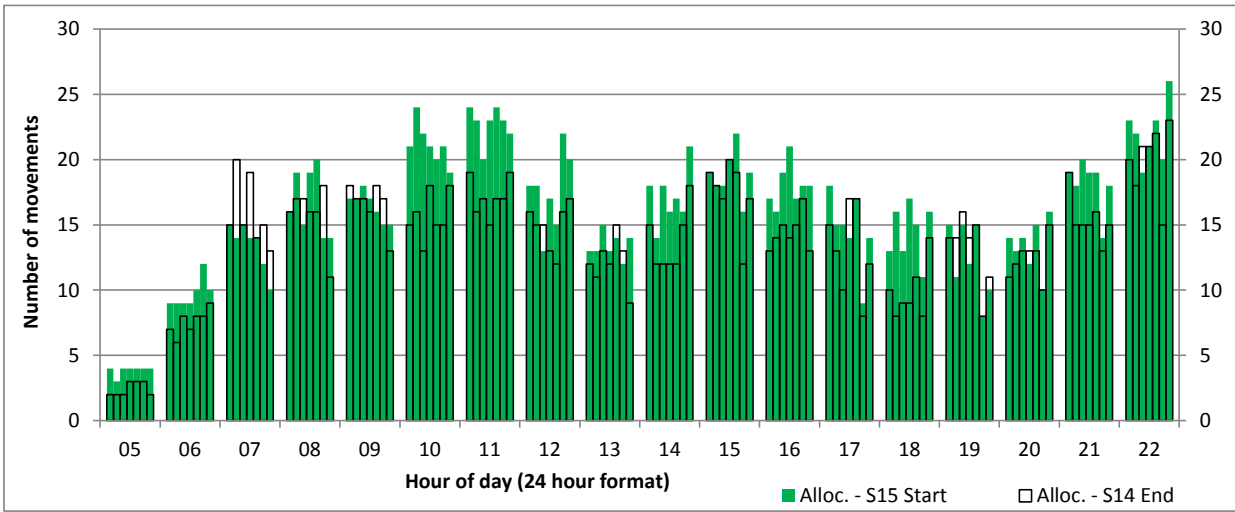
Peak Week - Runway Allocation Comparison

Comparison of S15 Start vs. S14 End



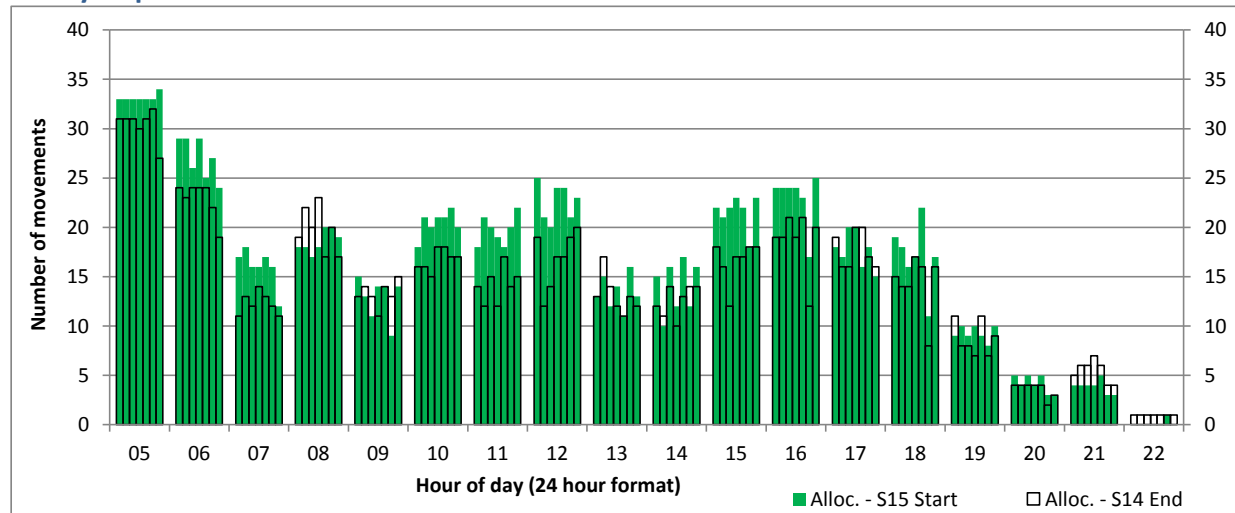
Hourly Arrival Allocation

Time: UTC



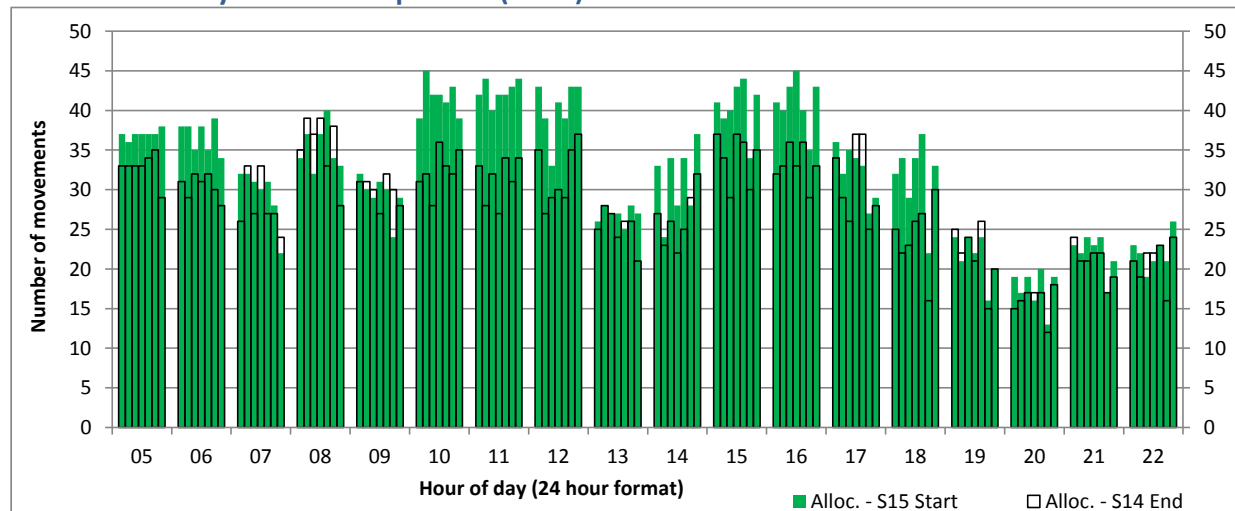
Hourly Departure Allocation

Time: UTC



Combined Hourly Arrival & Departure (Total) Allocation

Time: UTC



Peak Week - Passengers Histogram

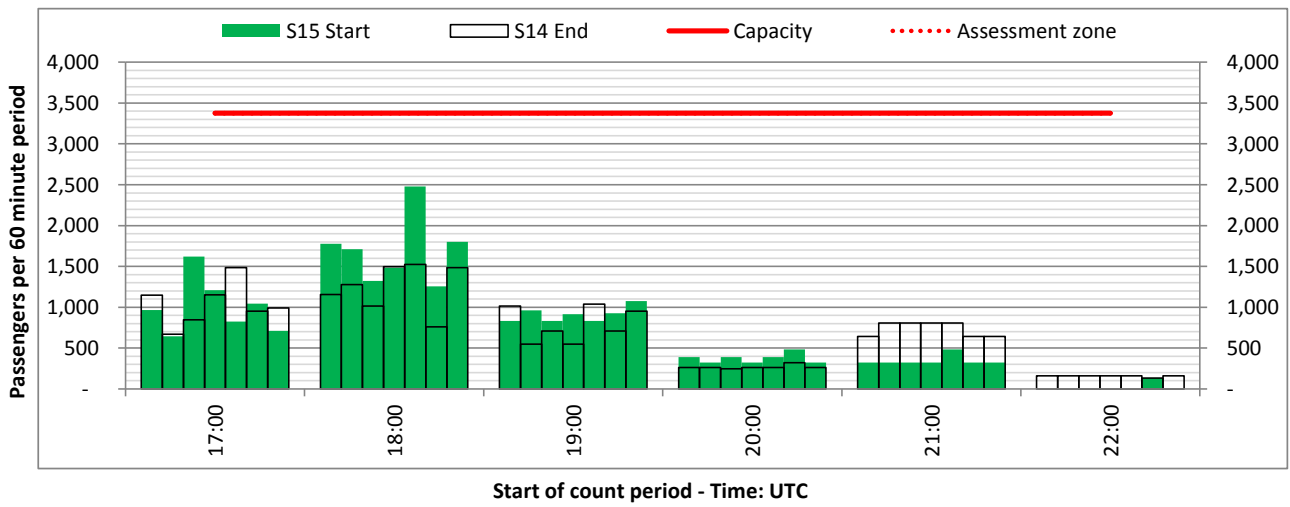
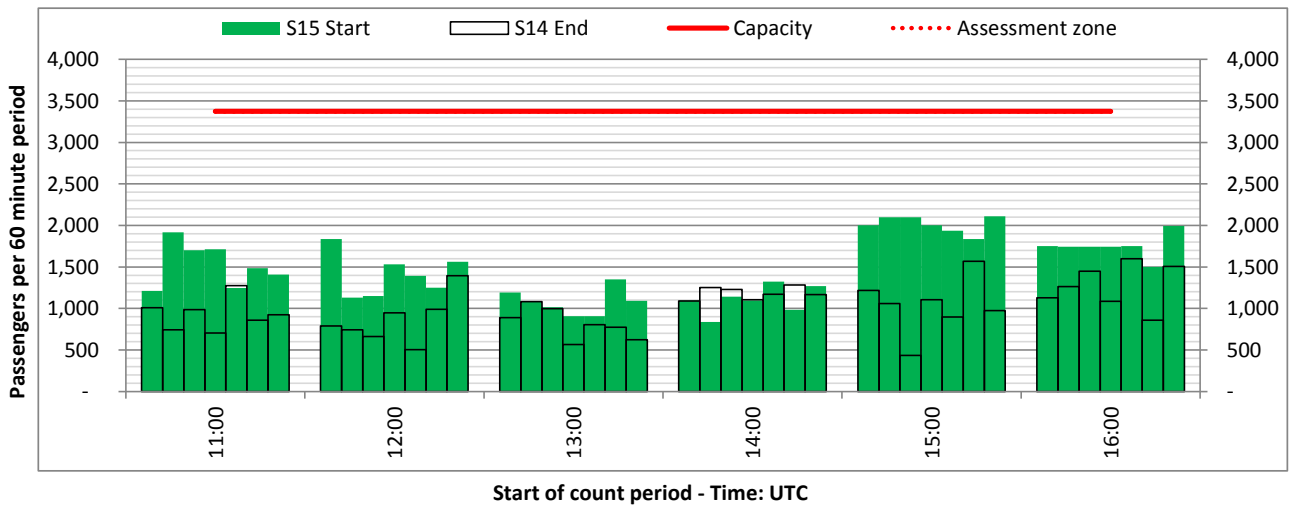
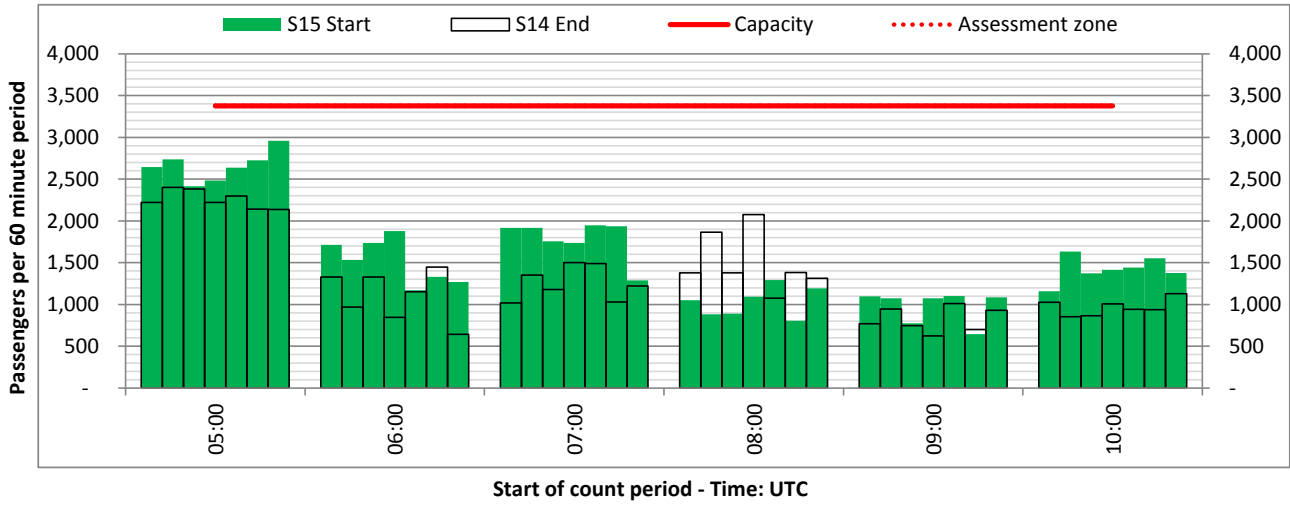
DEPARTURE - 60 minute count rolling every 60 mins (T60/10 Clock Hour)



Terminals: 1

Operators: All Operators

Days: 1234567



Peak Week - Passengers Histogram

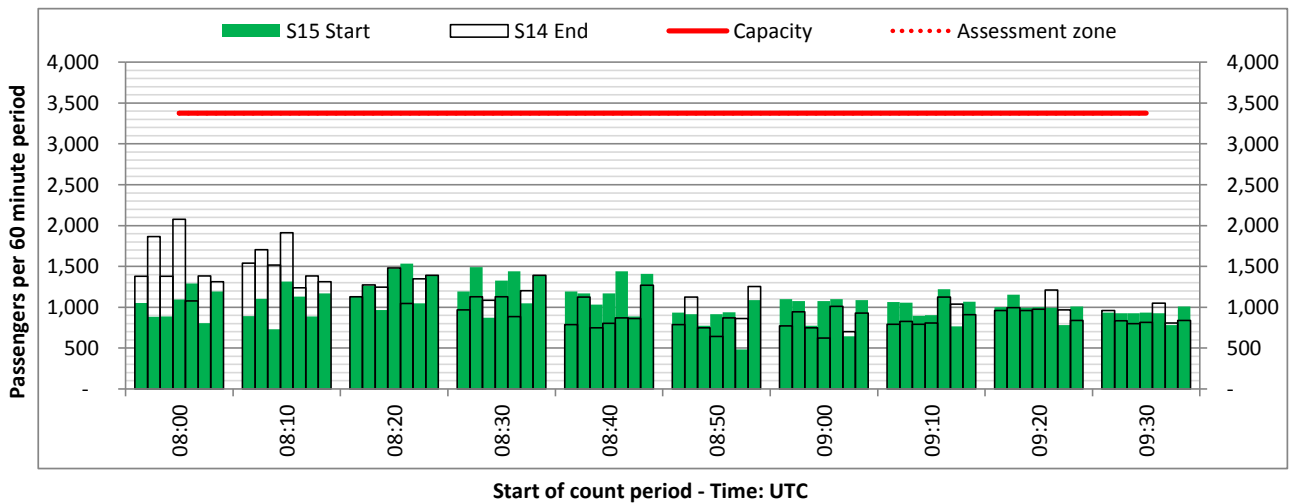
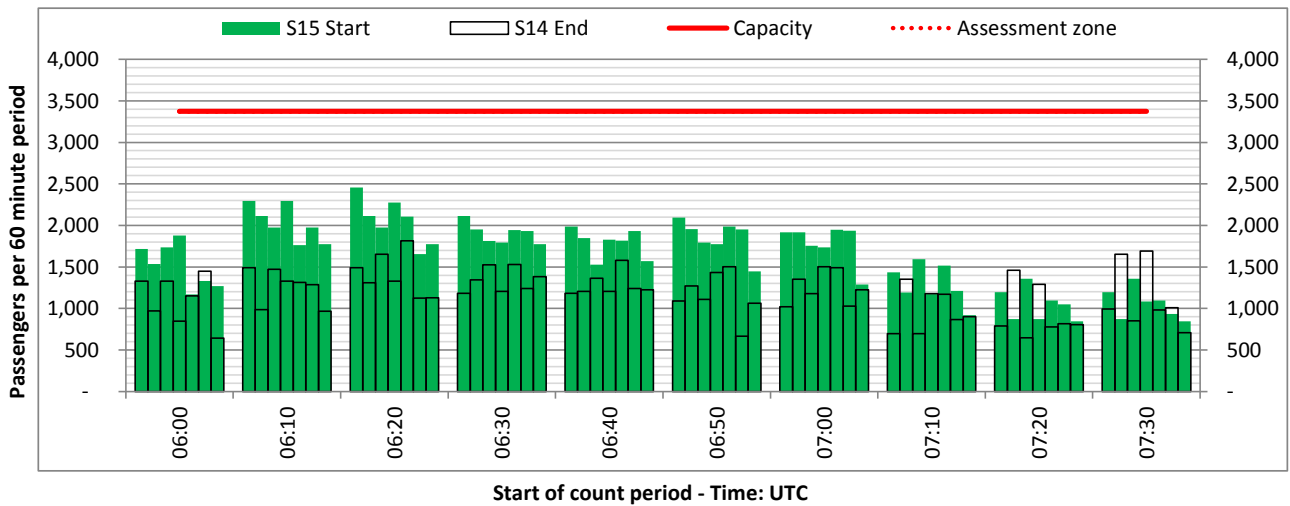
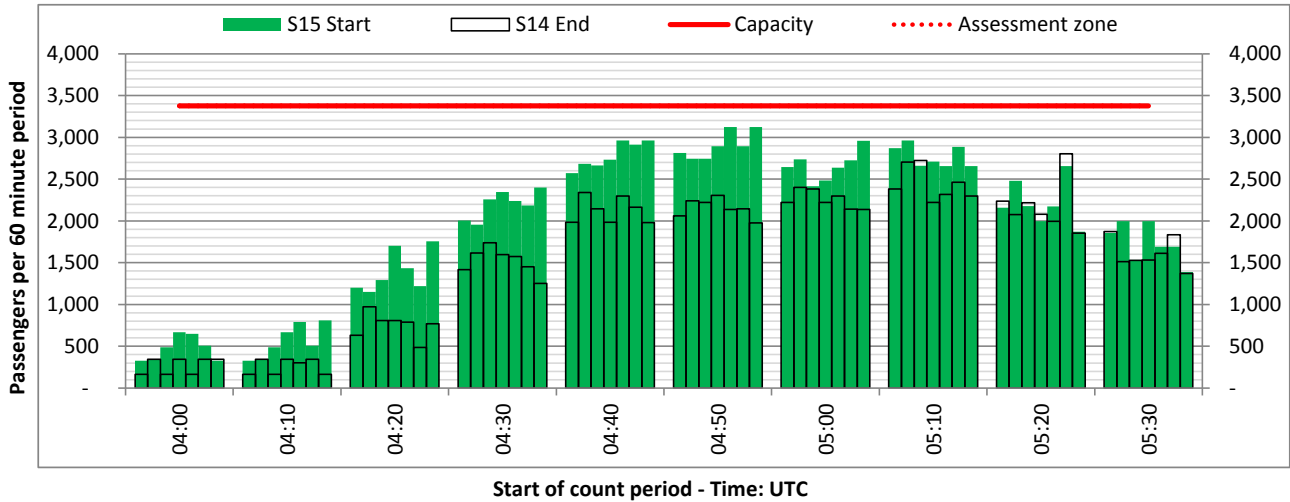
DEPARTURE - 60 minute count rolling every 10 mins (T60/10)



Terminals: 1

Operators: All Operators

Days: 1234567



Peak Week - Passengers Histogram

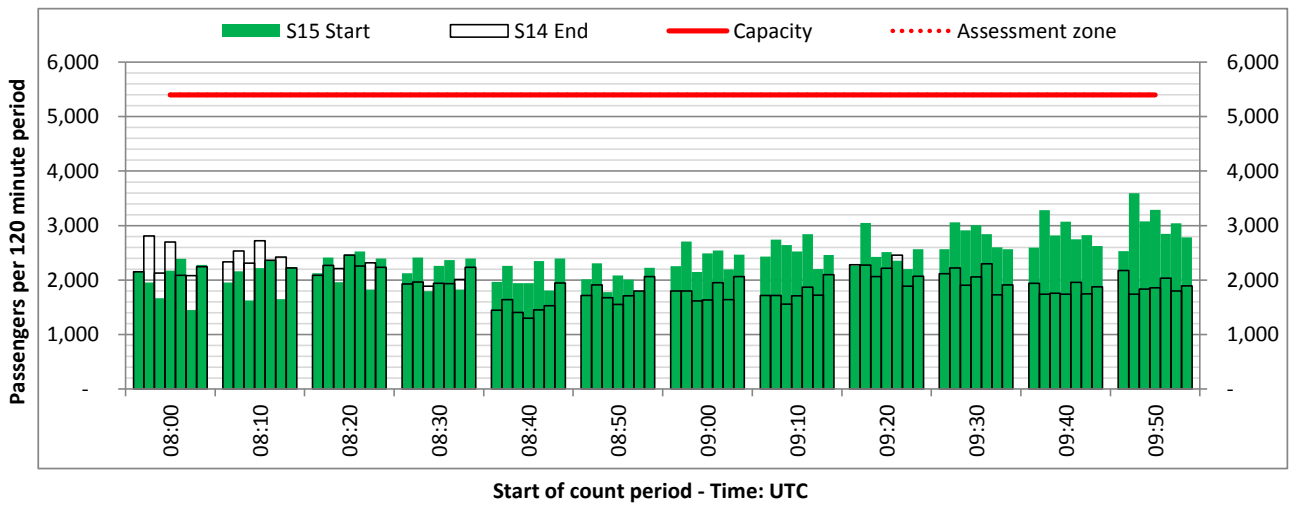
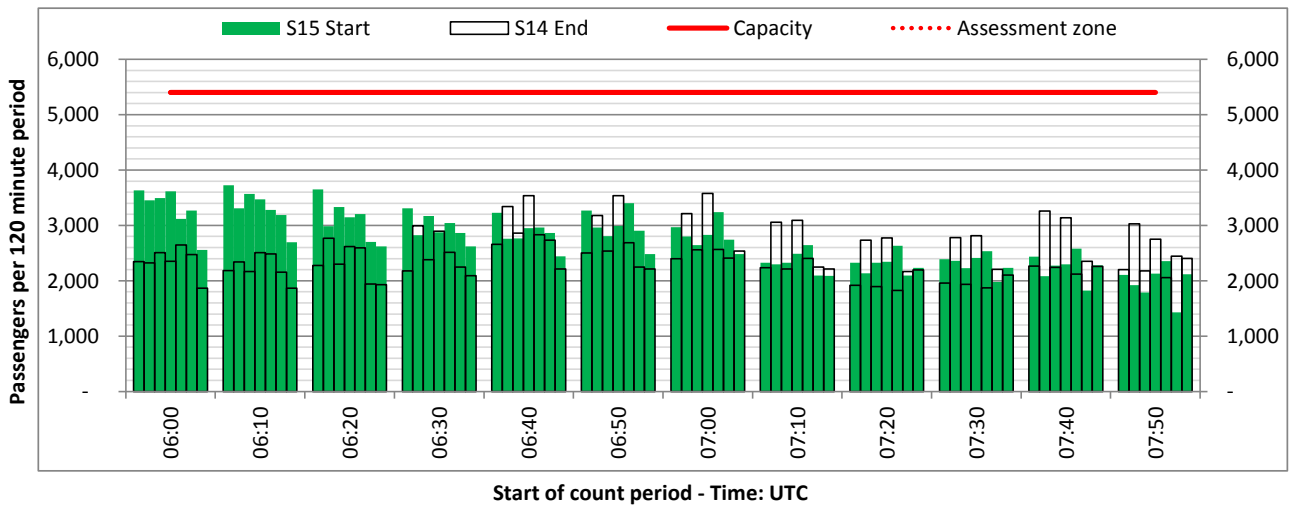
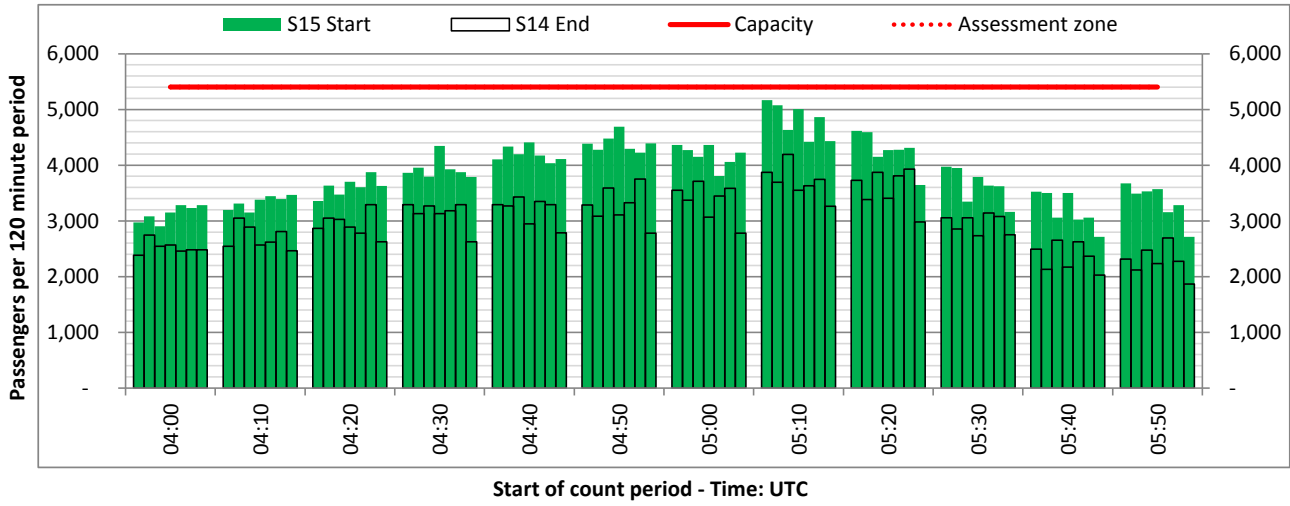
DEPARTURE - 120 minute count rolling every 10 mins (T120/10)



Terminals: 1

Operators: All Operators

Days: 1234567



Peak Week - Passengers Histogram

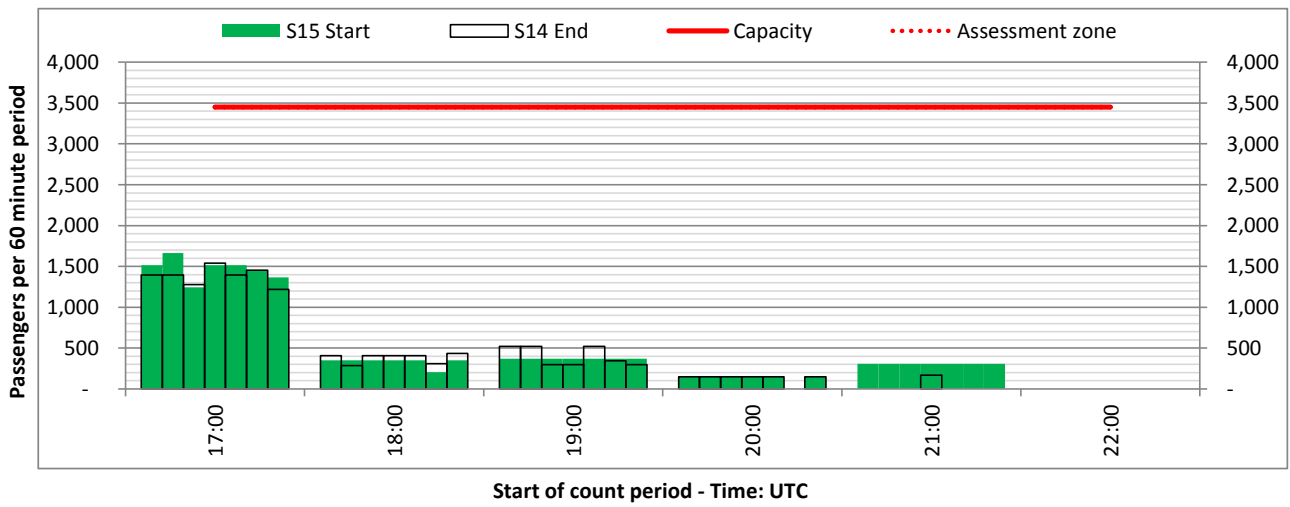
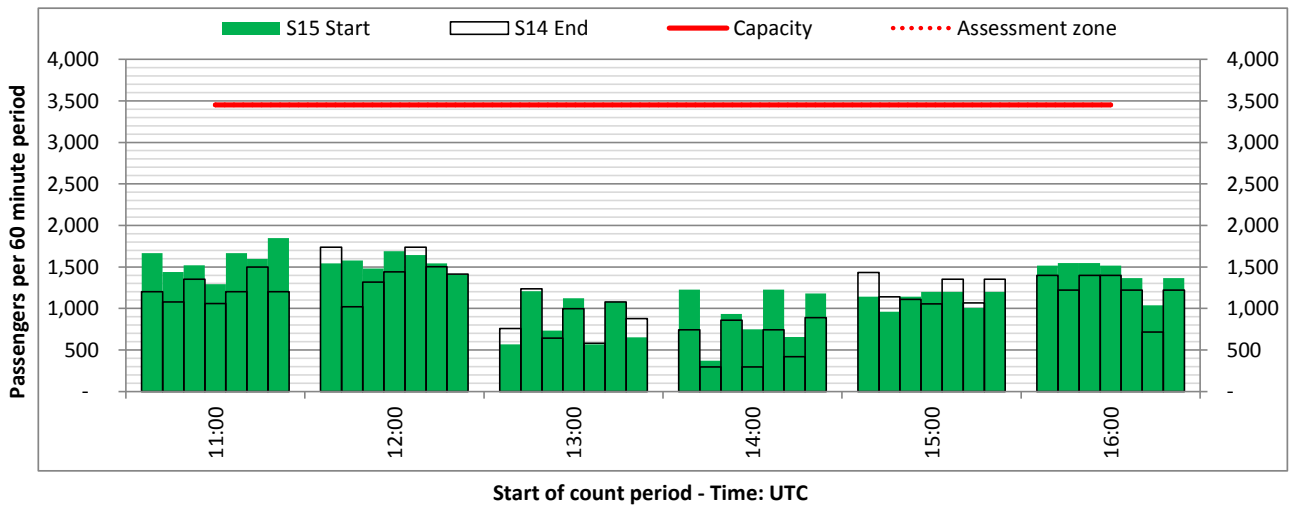
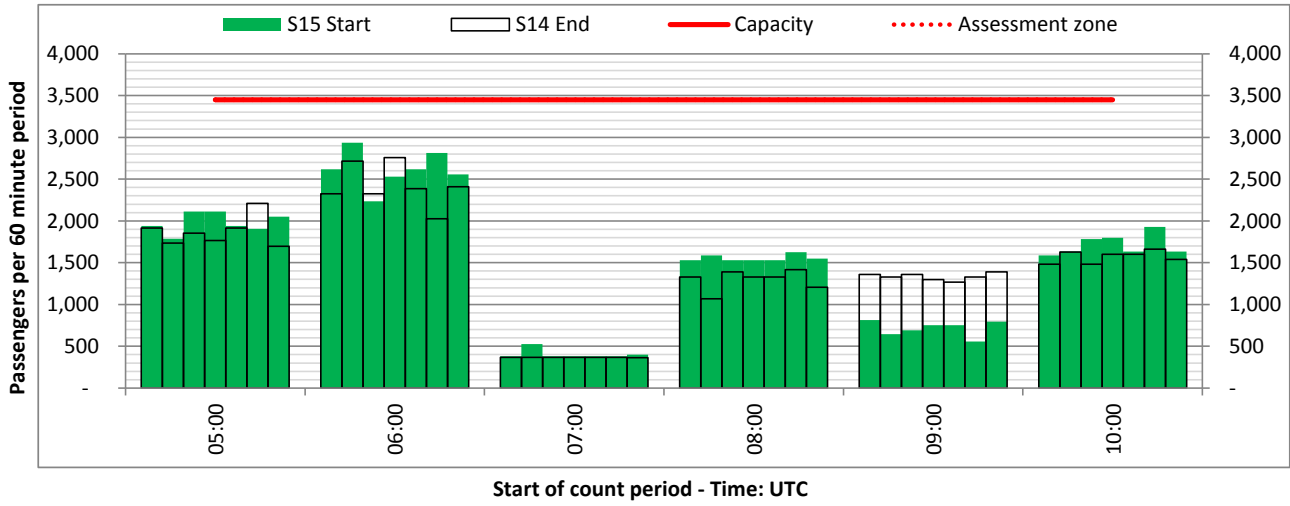
DEPARTURE - 60 minute count rolling every 60 mins (T60/10 Clock Hour)



Terminals: 2

Operators: All Operators

Days: 1234567



Peak Week - Passengers Histogram

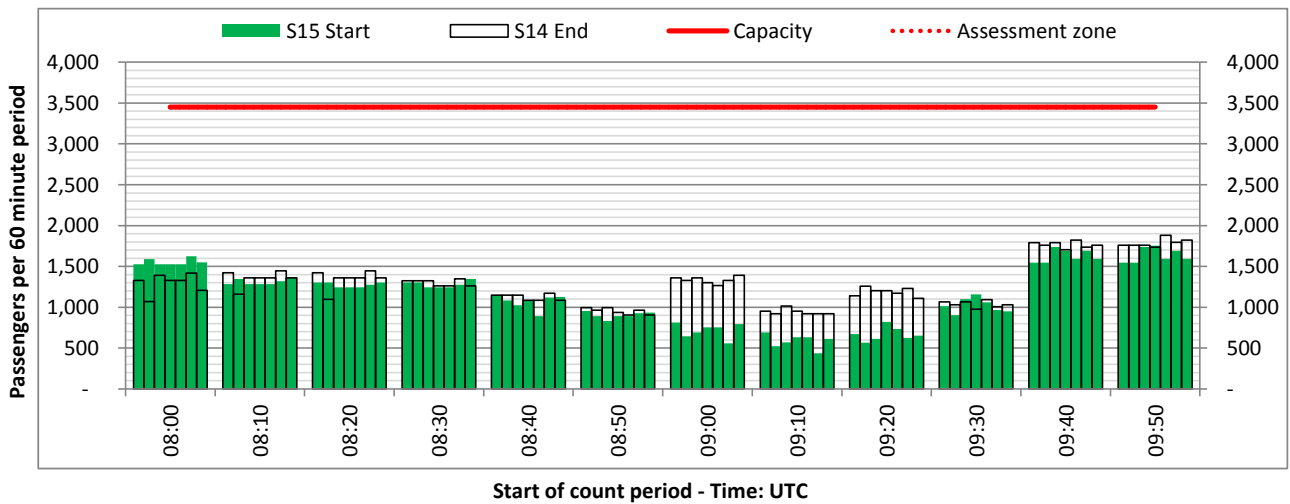
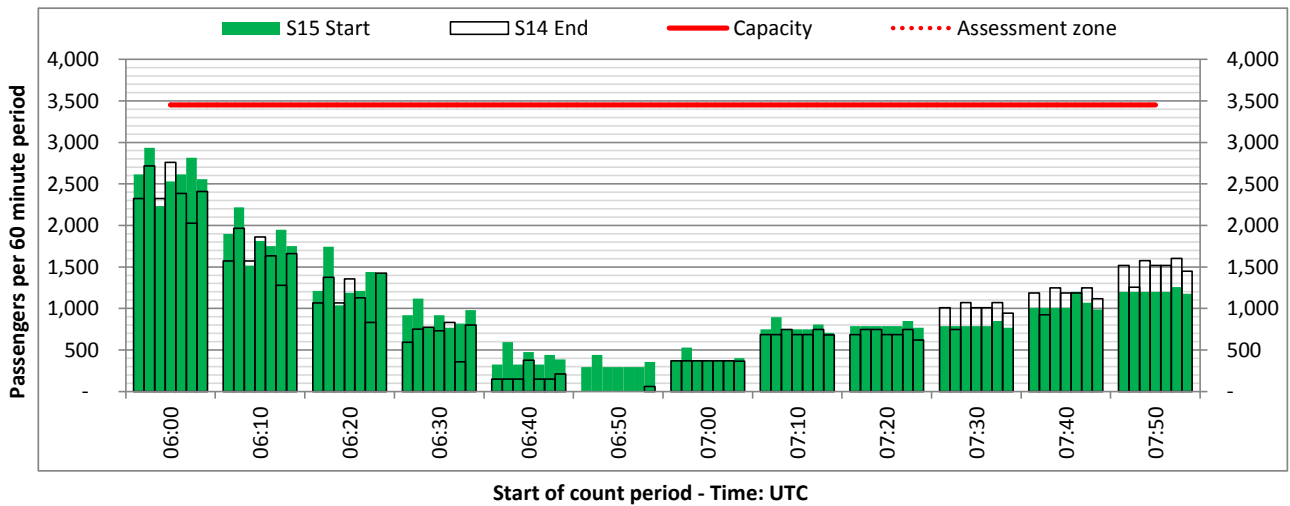
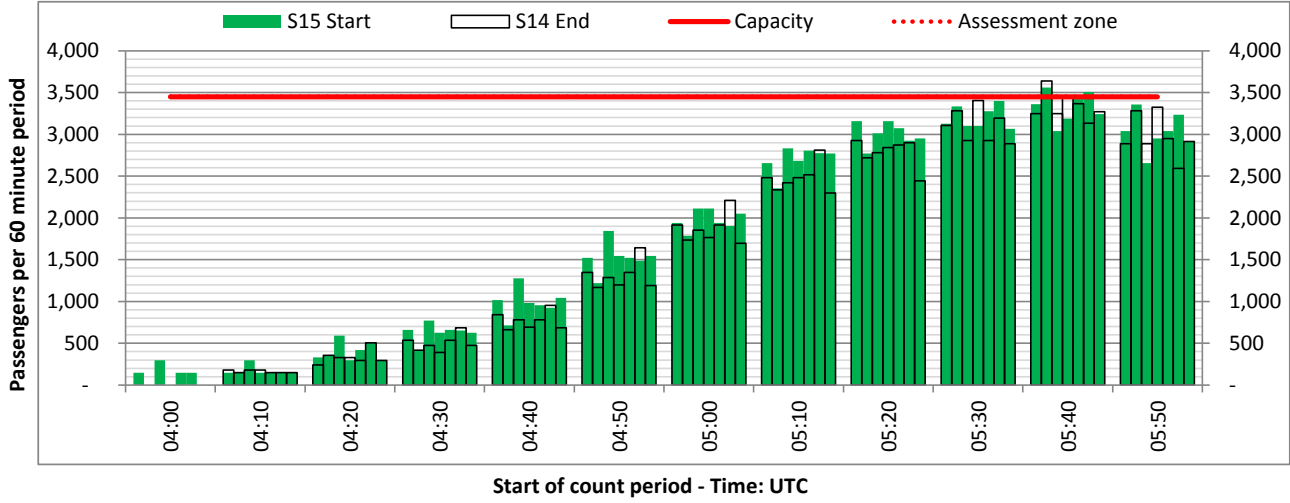
DEPARTURE - 60 minute count rolling every 10 mins (T60/10)



Terminals: 2

Operators: All Operators

Days: 1234567



Peak Week - Passengers Histogram

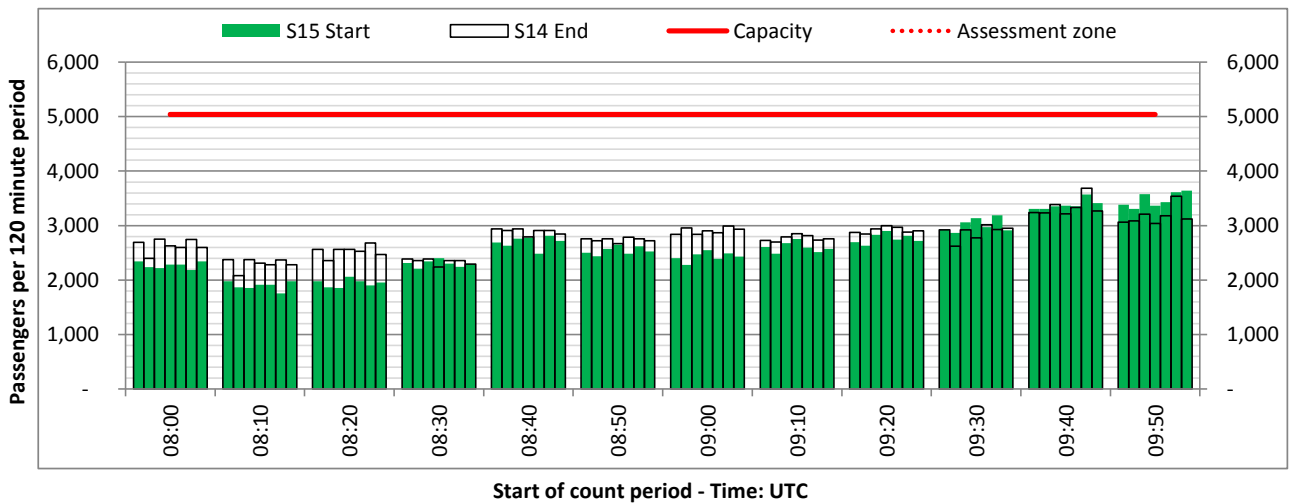
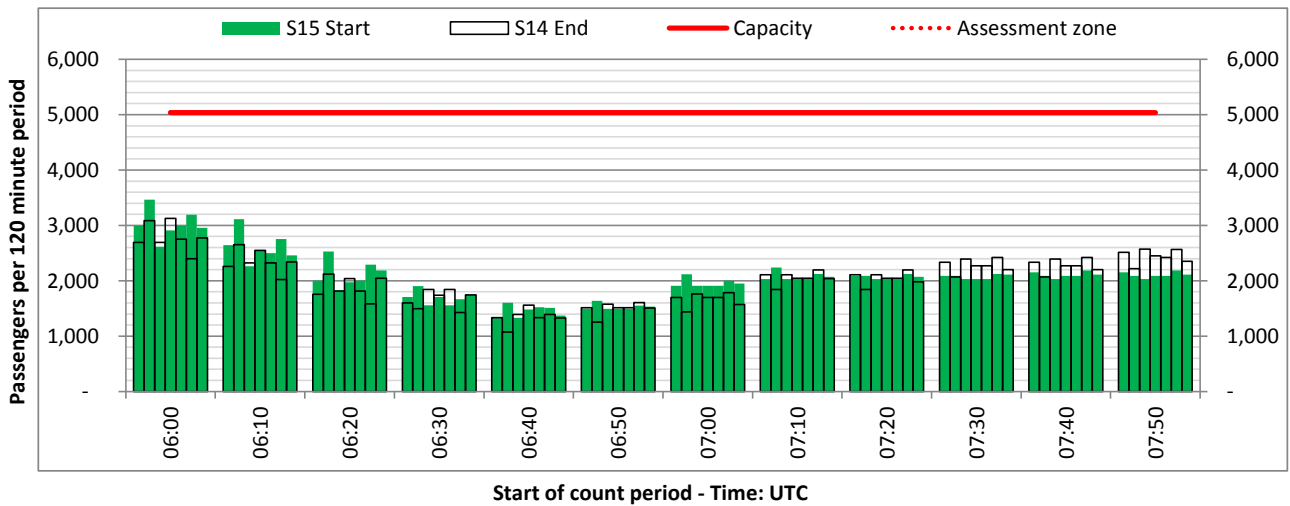
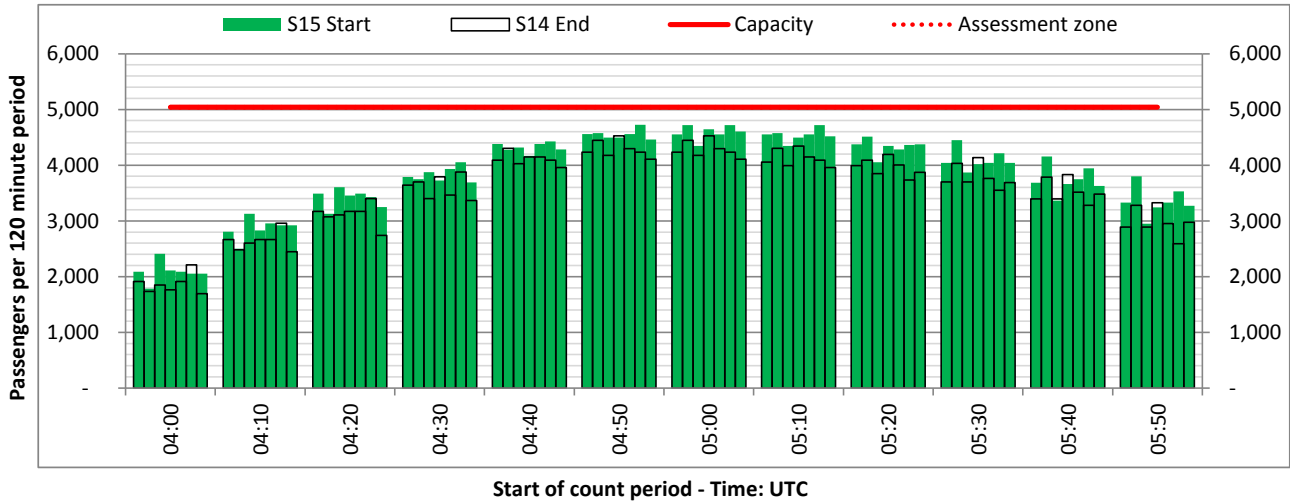
DEPARTURE - 120 minute count rolling every 10 mins (T120/10)



Terminals: 2

Operators: All Operators

Days: 1234567



Peak Week - Passengers Histogram

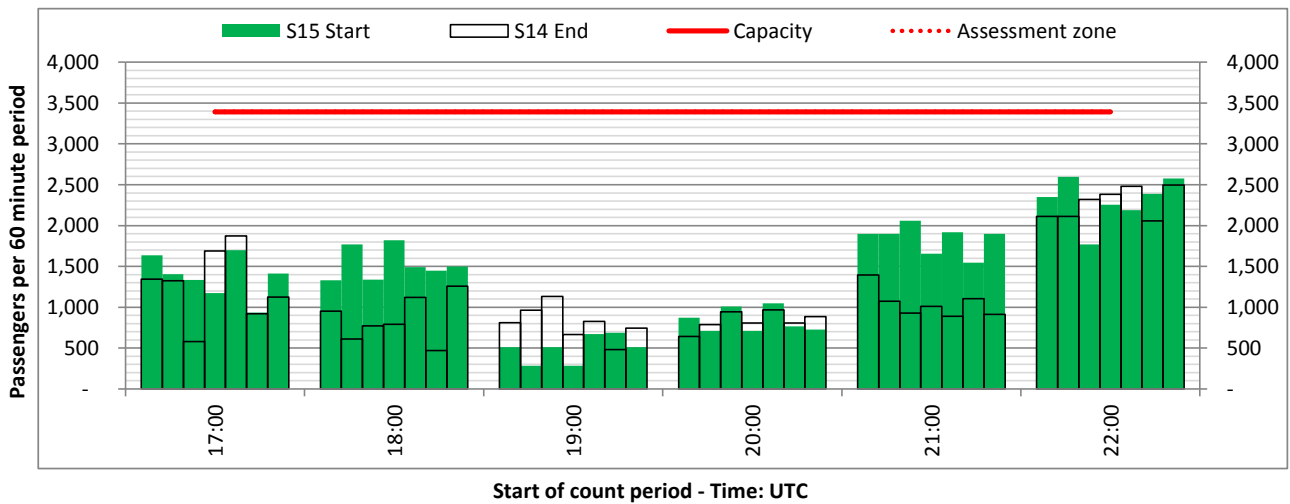
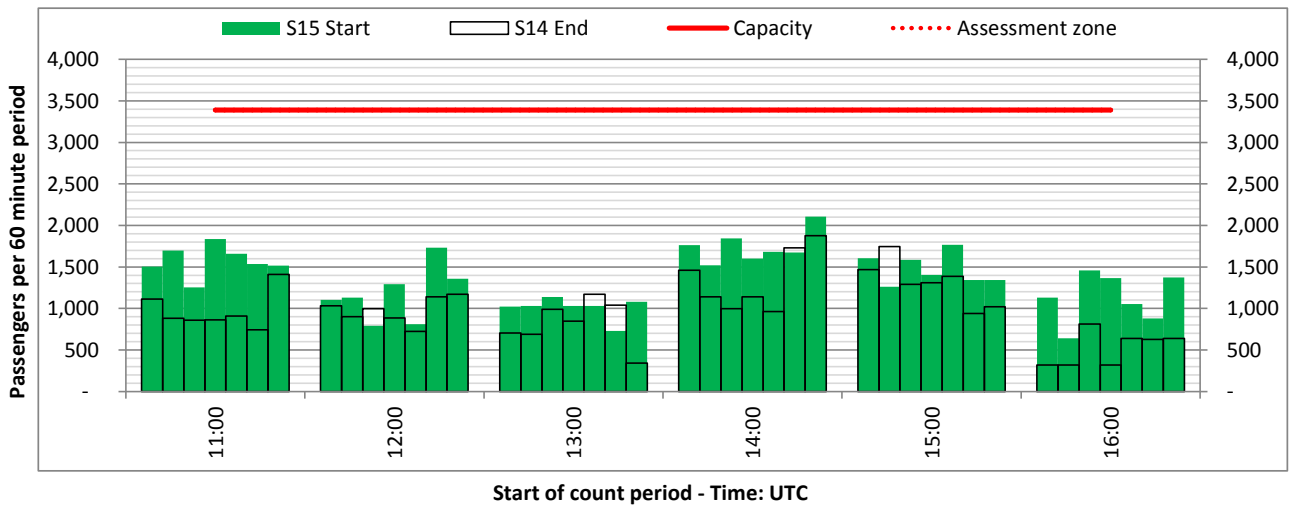
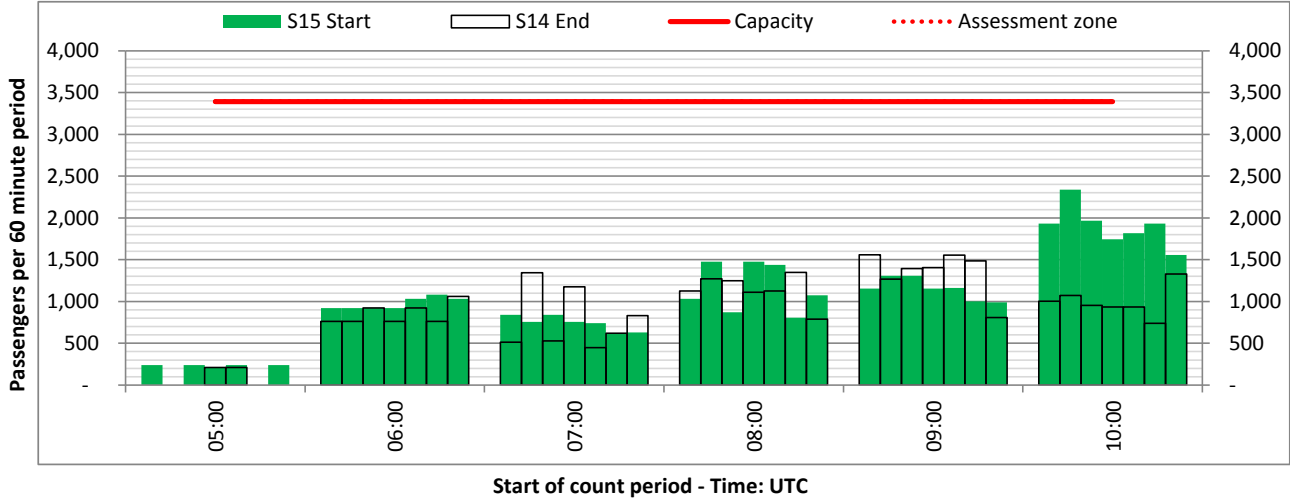
ARRIVAL - 60 minute count rolling every 60 mins (T60/10 Clock Hour)



Terminals: 1

Operators: All Operators

Days: 1234567



Peak Week - Passengers Histogram

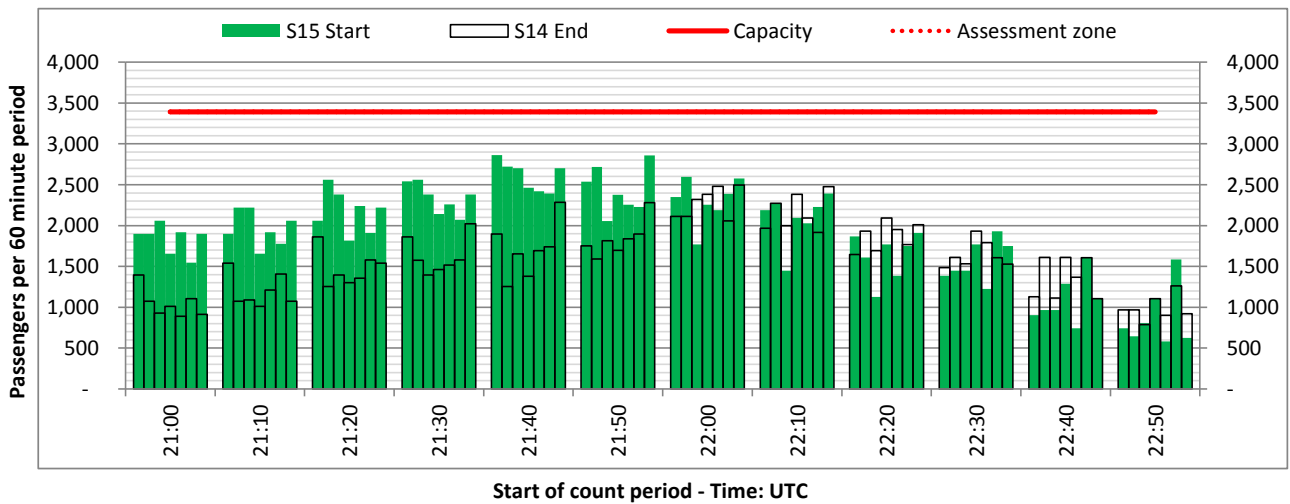
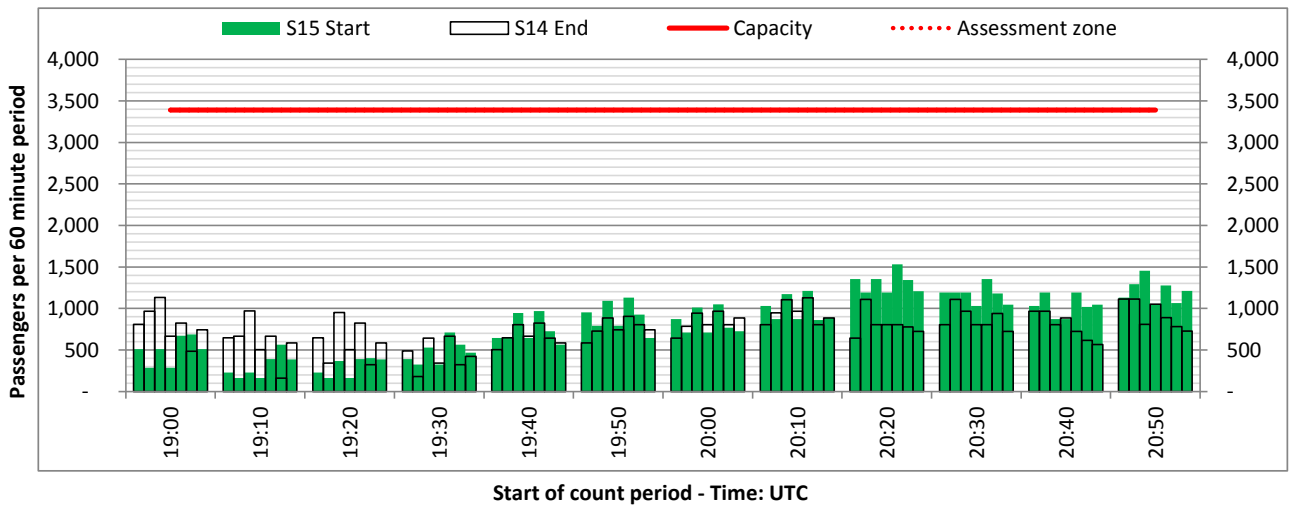
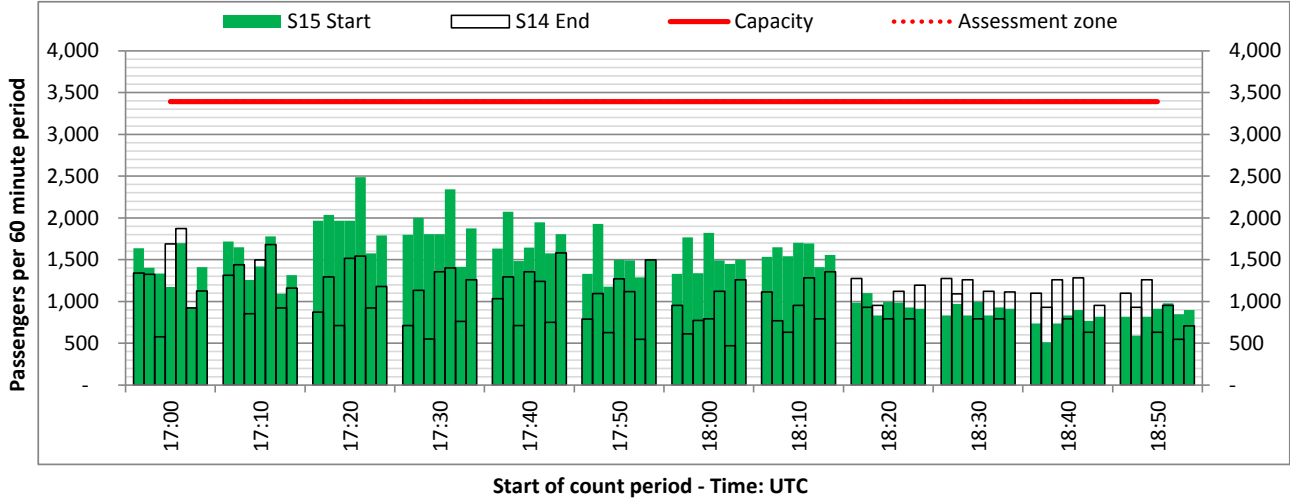
ARRIVAL - 60 minute count rolling every 10 mins (T60/10)



Terminals: 1

Operators: All Operators

Days: 1234567



Peak Week - Passengers Histogram

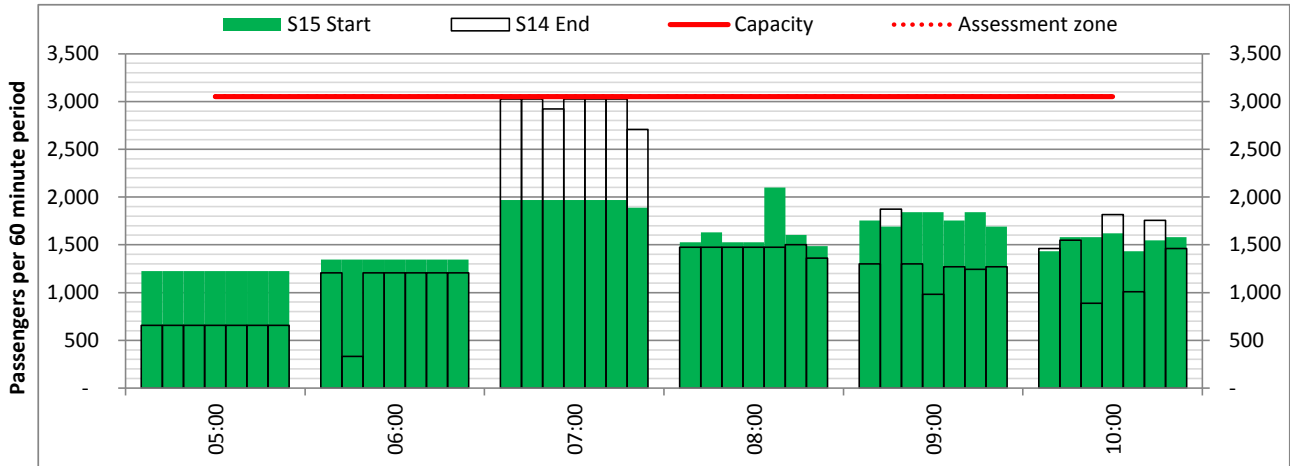
ARRIVAL - 60 minute count rolling every 60 mins (T60/10 Clock Hour)



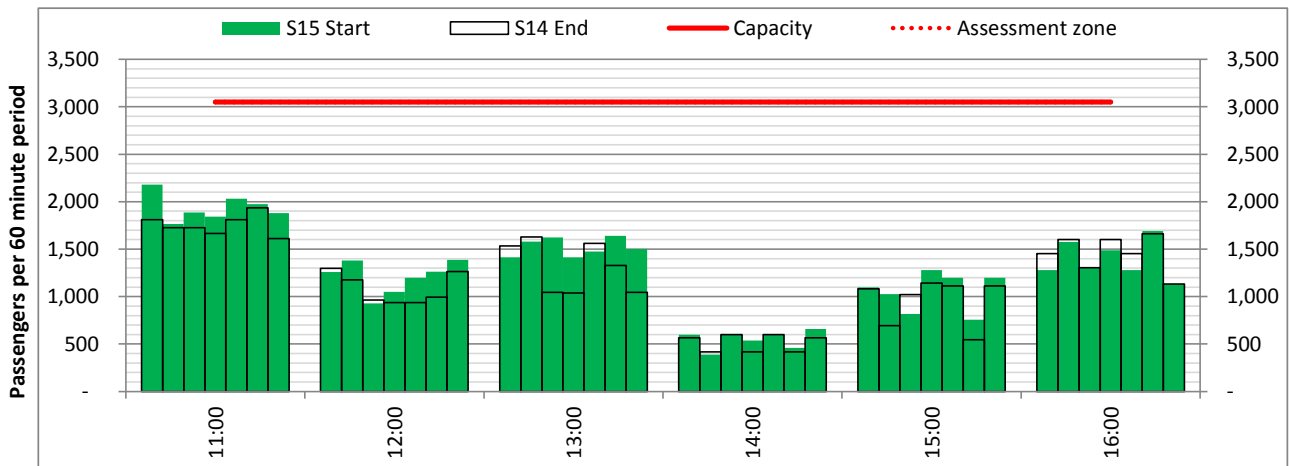
Terminals: 2

Operators: All Operators

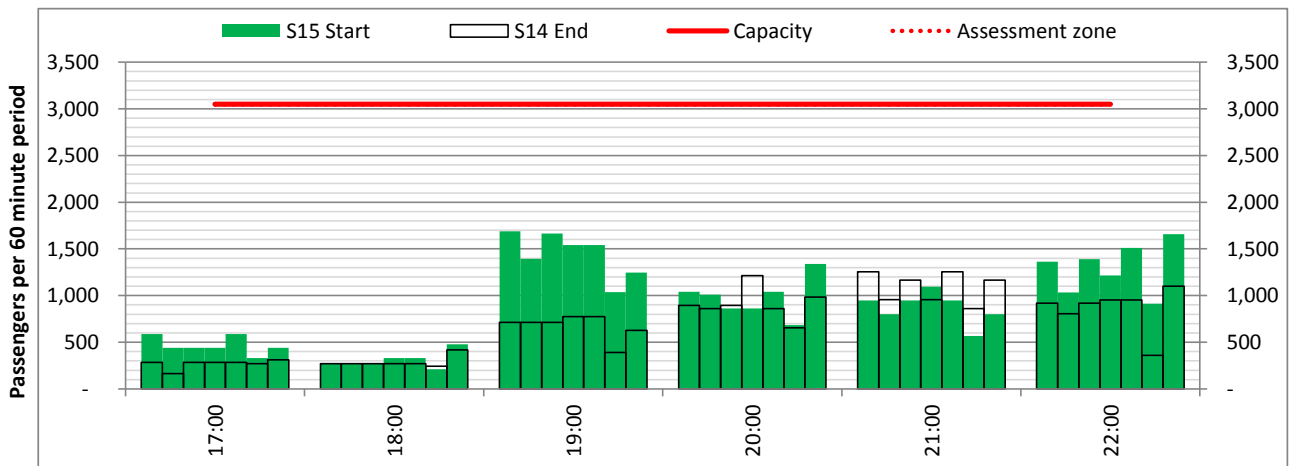
Days: 1234567



Start of count period - Time: UTC



Start of count period - Time: UTC



Start of count period - Time: UTC

Peak Week - Passengers Histogram

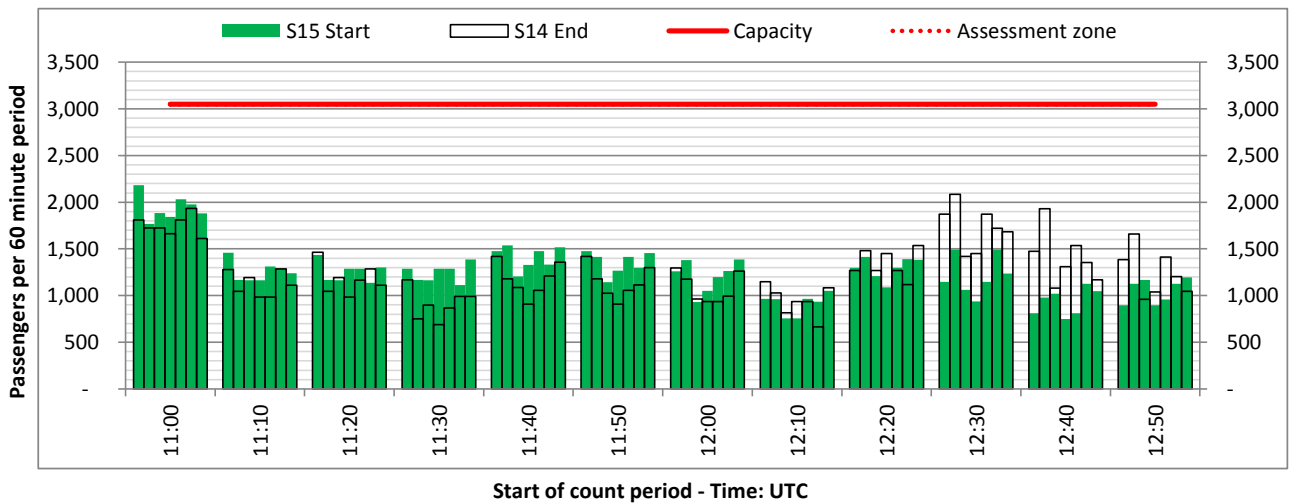
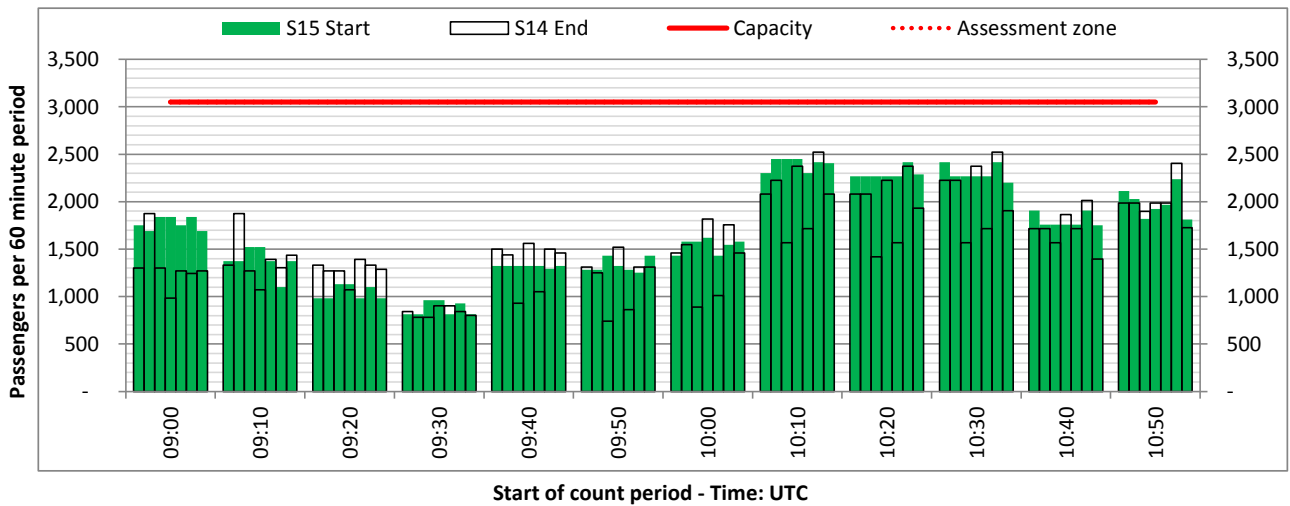
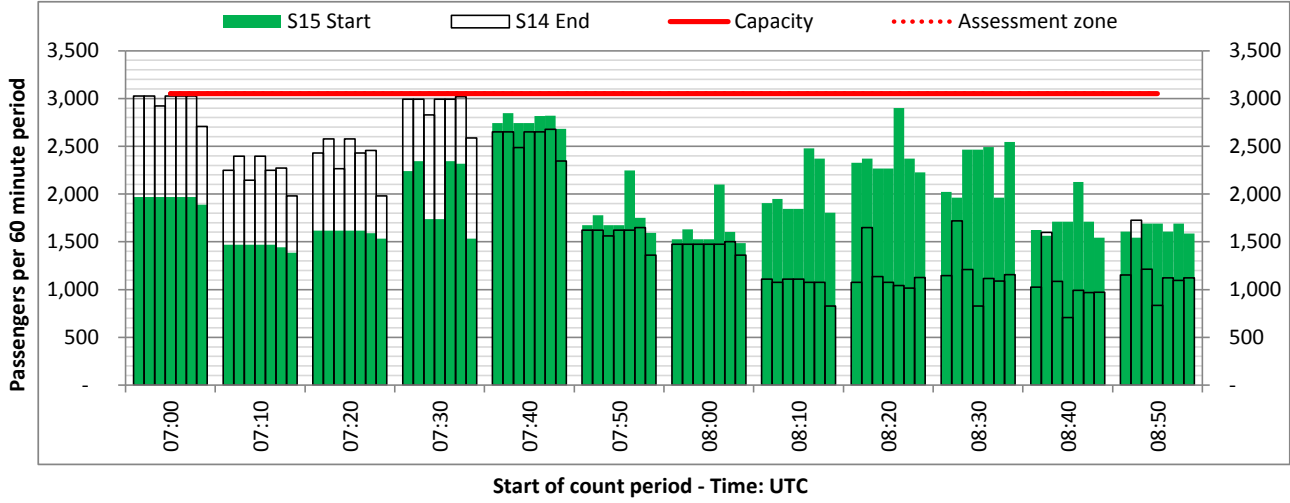
ARRIVAL - 60 minute count rolling every 10 mins (T60/10)



Terminals: 2

Operators: All Operators

Days: 1234567



Glossary



Air Transport Movement (ATM)	Any aircraft movement which is either a scheduled or chartered passenger or cargo flight.
Common Travel Area (CTA)	Origin or Destination is in Republic of Ireland or the Channel Islands.
Demand	Unconstrained demand before any schedule adjustments have been made.
"Fill-in"	These are gaps in a historic series of slots which the carrier requests to "Fill-in" at Initial Submissions - Fill-ins will be recognisably part of the historic series and will have the same flight details to qualify as a "Fill-in".
Hist (SHL)	Snapshot of historic schedule rolled over from end of the previous equivalent season - as advised to airlines in the SHLs.
ICAO Size A	Aircraft with wingspan between 0.00m - 14.99m.
ICAO Size B	Aircraft with wingspan between 15.00m - 23.99m.
ICAO Size C	Aircraft with wingspan between 24.00m - 35.99m.
ICAO Size D	Aircraft with wingspan between 36.00m - 51.99m.
ICAO Size E	Aircraft with wingspan between 52.00m - 64.99m.
ICAO Size F	Aircraft with wingspan between 65.00m - 80.00m.
Init Coord	Snapshot of schedule immediately after Initial Coordination is completed - as advised to airlines in the SALs.
Passenger Air Transport Movement (PATM)	Any aircraft movement which is either a scheduled or chartered passenger flight.
Start	Snapshot of schedule shortly before the start of the scheduling season (exact date given below where used).
Time: Local	Times shown are in LOCAL time for the airport/scheduling season.
Time: UTC	Times shown are in Universal Time Constant (UTC).

Data snapshot descriptions

S14 Start	S14 schedule as cleared on Wed 18-Mar-15.
S14 End	S14 schedule as cleared on Wed 18-Mar-15.
S15 Start	S15 schedule as cleared on Wed 18-Mar-15.

Peak Week	Peak week for S14 is Mon 04-Aug-14 to Sun 10-Aug-14. Peak week for S15 is Mon 03-Aug-15 to Sun 09-Aug-15.
------------------	--

For ACL use

	Airport-Season-Branch-Resource	From date	To date	Time
Full Season Rep 1	DUB-S14-Start-Standard	Sun 30-Mar-2014	Sat 25-Oct-2014	UTC
Full Season Rep 2	DUB-S14-Live-Standard	Sun 30-Mar-2014	Sat 25-Oct-2014	UTC
Full Season Rep 3	DUB-S15-Live-Standard	Sun 29-Mar-2015	Sat 24-Oct-2015	UTC
	Airport-Season-Branch-Resource	From date	To date	Time
Peak Week Rep 1	DUB-S14-Start-Standard	Mon 04-Aug-2014	Sun 10-Aug-2014	UTC
Peak Week Rep 2	DUB-S14-Live-Standard	Mon 04-Aug-2014	Sun 10-Aug-2014	UTC
Peak Week Rep 3	DUB-S15-Live-Standard	Mon 03-Aug-2015	Sun 09-Aug-2015	UTC