

# Dublin Airport (DUB)

## Summer 2016 (S16)



### Start of Season Report

Report Date: Wed 23-Mar-2016

#### Headlines

	S16 Start	vs. S15 Start	vs. S15 End
Total Air Transport Movements (Passenger & Freight)	<b>132,772</b>	▲ <b>8.3%</b>	▲ <b>8.6%</b>
Total Passenger Air Transport Movements	<b>130,397</b>	▲ <b>8.5%</b>	▲ <b>8.9%</b>
Total Passenger Air Transport Movement Seats	<b>21,918,438</b>	▲ <b>9.1%</b>	▲ <b>9.2%</b>
Average Seats per Passenger Air Transport Movement	<b>168</b>	▲ <b>0.5%</b>	▲ <b>0.3%</b>
Percentage of allocated slots cleared as requested (OK)	<b>98%</b>		

#### Contents

Page	Content
2	Runway Scheduling Limits
3	ATM Allocation by Operator (Full season and Peak Week Comparison)
4	Peak Week - Allocation and Slot Adjustment Distribution by Operator
5	Significant Route Changes
6	Full Season - ATM Analysis
7	Full Season - PATM Seats Analysis
8	Full Season - Terminal Analysis
9	Full Season - Aircraft Size Analysis
10	Full Season - Seasonality
11	Peak Week - Hourly Runway Demand
12	Peak Week - Hourly Runway Allocation
13	Peak Week - Hourly Runway Allocation Comparison (S16 Start vs. S15 Start)
14	Peak Week - Hourly Runway Allocation Comparison (S16 Start vs. S15 End)
15	Peak Week Histogram - Departure Passengers (T60/10) - 1 - All Operators
16	Peak Week Histogram - Departure Passengers (T120/10) - 1 - All Operators
17	Peak Week Histogram - Departure Passengers (T60/10) - 2 - All Operators
18	Peak Week Histogram - Departure Passengers (T120/10) - 2 - All Operators
19	Peak Week Histogram - Arrival Passengers (T60/10) - 2 - All Operators
20	Peak Week Histogram - Arrival Passengers (T60/10) - 1 - All Operators
21	Peak Week Histogram - Arrival Passengers (T60/10) - 2 - All Operators
22	Glossary

**S15 scheduling season runs from Sun 29-Mar-2015 to Sat 24-Oct-2015 (210 days).**

**S16 scheduling season runs from Sun 27-Mar-2016 to Sat 29-Oct-2016 (217 days).**

*S15 full season data is adjusted by a factor of 1.03333 in order to directly compare against S16 full season data.*

#### Disclaimer

No warranty whether expressed or implied as to the completeness, accuracy, fitness for purpose, or satisfactory quality is given by ACL regarding the information in this report, which is provided by third parties. Accordingly, ACL excludes all liability with regard to such data.

The contents of this report may not be reproduced without the written consent of ACL.

# Runway Scheduling Limits



## Declared Hourly Movement Capacity

S15 Arrivals								Change: S15 to S16								S16 Arrivals							
Hour	Mon	Tue	Wed	Thu	Fri	Sat	Sun	Hour	Mon	Tue	Wed	Thu	Fri	Sat	Sun	Hour	Mon	Tue	Wed	Thu	Fri	Sat	Sun
UTC	1	2	3	4	5	6	7	UTC	1	2	3	4	5	6	7	UTC	1	2	3	4	5	6	7
00	23	23	23	23	23	23	23	00								00	23	23	23	23	23	23	23
01	23	23	23	23	23	23	23	01								01	23	23	23	23	23	23	23
02	23	23	23	23	23	23	23	02								02	23	23	23	23	23	23	23
03	23	23	23	23	23	23	23	03								03	23	23	23	23	23	23	23
04	23	23	23	23	23	23	23	04								04	23	23	23	23	23	23	23
05	23	23	23	23	23	23	23	05								05	23	23	23	23	23	23	23
06	20	20	20	20	20	20	20	06								06	20	20	20	20	20	20	20
07	25	25	25	25	25	25	25	07								07	25	25	25	25	25	25	25
08	22	22	22	22	22	22	22	08								08	22	22	22	22	22	22	22
09	23	23	23	23	23	23	23	09								09	23	23	23	23	23	23	23
10	27	27	27	27	27	27	27	10								10	27	27	27	27	27	27	27
11	27	27	27	27	27	27	27	11								11	27	27	27	27	27	27	27
12	23	23	23	23	23	23	23	12								12	23	23	23	23	23	23	23
13	27	27	27	27	27	27	27	13								13	27	27	27	27	27	27	27
14	23	23	23	23	23	23	23	14								14	23	23	23	23	23	23	23
15	26	26	26	26	26	26	26	15								15	26	26	26	26	26	26	26
16	25	25	25	25	25	25	25	16								16	25	25	25	25	25	25	25
17	23	23	23	23	23	23	23	17								17	23	23	23	23	23	23	23
18	23	23	23	23	23	23	23	18								18	23	23	23	23	23	23	23
19	23	23	23	23	23	23	23	19								19	23	23	23	23	23	23	23
20	25	25	25	25	25	25	25	20								20	25	25	25	25	25	25	25
21	30	30	30	30	30	30	30	21								21	30	30	30	30	30	30	30
22	26	26	26	26	26	26	26	22								22	26	26	26	26	26	26	26
23	23	23	23	23	23	23	23	23								23	23	23	23	23	23	23	23

S15 Departures								Change: S15 to S16								S16 Departures							
Hour	Mon	Tue	Wed	Thu	Fri	Sat	Sun	Hour	Mon	Tue	Wed	Thu	Fri	Sat	Sun	Hour	Mon	Tue	Wed	Thu	Fri	Sat	Sun
UTC	1	2	3	4	5	6	7	UTC	1	2	3	4	5	6	7	UTC	1	2	3	4	5	6	7
00	25	25	25	25	25	25	25	00								00	25	25	25	25	25	25	25
01	25	25	25	25	25	25	25	01								01	25	25	25	25	25	25	25
02	25	25	25	25	25	25	25	02								02	25	25	25	25	25	25	25
03	25	25	25	25	25	25	25	03								03	25	25	25	25	25	25	25
04	25	25	25	25	25	25	25	04								04	25	25	25	25	25	25	25
05	33	33	33	33	33	33	33	05	2	2	2	2	2	2	2	05	35	35	35	35	35	35	35
06	30	30	30	30	30	30	30	06								06	30	30	30	30	30	30	30
07	25	25	25	25	25	25	25	07								07	25	25	25	25	25	25	25
08	29	29	29	29	29	29	29	08								08	29	29	29	29	29	29	29
09	24	24	24	24	24	24	24	09								09	24	24	24	24	24	24	24
10	27	27	27	27	27	27	27	10								10	27	27	27	27	27	27	27
11	28	28	28	28	28	28	28	11								11	28	28	28	28	28	28	28
12	26	26	26	26	26	26	26	12								12	26	26	26	26	26	26	26
13	24	24	24	24	24	24	24	13								13	24	24	24	24	24	24	24
14	26	26	26	26	26	26	26	14								14	26	26	26	26	26	26	26
15	24	24	24	24	24	24	24	15								15	24	24	24	24	24	24	24
16	28	28	28	28	28	28	28	16								16	28	28	28	28	28	28	28
17	27	27	27	27	27	27	27	17								17	27	27	27	27	27	27	27
18	24	24	24	24	24	24	24	18								18	24	24	24	24	24	24	24
19	22	22	22	22	22	22	22	19								19	22	22	22	22	22	22	22
20	22	22	22	22	22	22	22	20								20	22	22	22	22	22	22	22
21	25	25	25	25	25	25	25	21								21	25	25	25	25	25	25	25
22	25	25	25	25	25	25	25	22								22	25	25	25	25	25	25	25
23	25	25	25	25	25	25	25	23								23	25	25	25	25	25	25	25

S15 Totals								Change: S15 to S16								S16 Totals							
Hour	Mon	Tue	Wed	Thu	Fri	Sat	Sun	Hour	Mon	Tue	Wed	Thu	Fri	Sat	Sun	Hour	Mon	Tue	Wed	Thu	Fri	Sat	Sun
UTC	1	2	3	4	5	6	7	UTC	1	2	3	4	5	6	7	UTC	1	2	3	4	5	6	7
00	32	32	32	32	32	32	32	00								00	32	32	32	32	32	32	32
01	32	32	32	32	32	32	32	01								01	32	32	32	32	32	32	32
02	32	32	32	32	32	32	32	02								02	32	32	32	32	32	32	32
03	32	32	32	32	32	32	32	03								03	32	32	32	32	32	32	32
04	32	32	32	32	32	32	32	04								04	32	32	32	32	32	32	32
05	40	40	40	40	40	40	40	05								05	40	40	40	40	40	40	40
06	41	41	41	41	41	41	41	06	1	1	1	1	1	1	1	06	42	42	42	42	42	42	42
07	42	42	42	42	42	42	42	07								07	42	42	42	42	42	42	42
08	42	42	42	42	42	42	42	08								08	42	42	42	42	42	42	42
09	41	41	41	41	41	41	41	09								09	41	41	41	41	41	41	41
10	45	45	45	45	45	45	45	10								10	45	45	45	45	45	45	45
11	46	46	46	46	46	46	46	11								11	46	46	46	46	46	46	46
12	46	46	46	46	46	46	46	12								12	46	46	46	46	46	46	46
13	46	46	46	46	46	46	46	13								13	46	46	46	46	46	46	46
14	44	44	44	44	44	44	44	14								14	44	44	44	44	44	44	44
15	44	44	44	44	44	44	44	15	1	1	1	1	1	1	1	15	45	45	45	45	45	45	45
16	48	48	48	48	48	48	48	16								16	48	48	48	48	48	48	48
17	42	42	42	42	42	42	42	17								17	42	42	42	42	42	42	42
18	37	37	37	37	37	37	37	18								18	37	37	37	37	37	37	37
19	38	38	38	38	38	38	38	19								19	38	38	38	38	38	38	38
20	38	38	38	38	38	38	38	20								20	38	38	38	38	38	38	38
21	36	36	36	36	36	36	36	21								21	36	36	36	36	36	36	36
22	32	32	32	32	32	32	32	22								22	32	32	32	32	32	32	32
23	32	32	32	32	32	32	32	23								23	32	32	32	32	32	32	32

# Air Transport Movement Allocation by Operator

Comparison between S15 End vs. S16 Start



Operator	FULL SEASON ALLOCATION								PEAK WEEK ALLOCATION								
	S15 ATMs	S16 ATMs	+/- change	S16 Rank	S15 Seats	S16 Seats	+/- change	S16 Rank	S15 ATMs	S16 ATMs	+/- change	S16 Rank	S15 Seats	S16 Seats	+/- change	S16 Rank	
Aegean Airlines	-	54	54	40	-	9,396	9,396	34	-	-	4	4	36	-	696	696	30
Aer Arann	21	2	-19	53	1,440	144	-1,296	53	-	-	0	50	-	-	0	0	45
Aer Lingus	50,031	52,630	2,599	2	7,846,359	8,138,329	291,970	3	1,703	1,780	77	2	267,078	273,632	6,554	3	
Aeronova	2	-	-2	61	-	-	0	55	-	-	0	50	-	-	0	0	45
Aigle Azur	-	2	2	53	-	360	360	48	-	-	0	50	-	-	0	0	45
Air Berlin	2	-	-2	61	372	-	-372	55	-	-	0	50	-	-	0	0	45
Air Canada	469	558	89	16	132,296	157,356	25,060	15	22	24	2	17	6,204	6,768	564	12	
Air Contractors	475	418	-57	23	69,963	61,446	-8,517	23	25	24	-1	17	3,675	3,528	-147	18	
Air Europa	41	36	-5	41	7,688	6,696	-992	36	2	2	0	41	372	372	0	37	
Air France	2,212	2,224	12	7	203,987	206,496	2,509	12	72	72	0	6	6,660	6,650	-10	13	
Air Mediterranee	14	-	-14	61	2,946	-	-2,946	55	1	-	-1	50	131	-	-131	45	
Air Moldova	122	120	-2	36	13,900	20,400	6,500	30	4	4	0	36	456	680	224	31	
Air Nostrum	14	-	-14	61	1,447	-	-1,447	55	-	-	0	50	-	-	0	0	45
Alba Star	48	89	41	37	8,081	15,168	7,087	31	1	4	3	36	170	680	510	31	
Air Transat	162	156	-6	34	42,947	44,610	1,663	27	6	6	0	34	1,680	1,866	186	24	
Alitalia	10	-	-10	61	1,637	-	-1,637	55	2	-	-2	50	330	-	-330	45	
American Airlines	808	1,552	744	9	160,706	356,628	195,922	5	28	56	28	8	5,614	13,300	7,686	5	
Arkefly	-	-	0	61	-	-	0	55	-	-	0	50	-	-	0	0	45
Arkia	17	17	0	47	4,381	4,505	124	39	1	2	1	41	265	530	265	35	
Atlantic Airways	-	2	2	53	-	288	288	51	-	-	0	50	-	-	0	0	45
Austrian Airlines	4	2	-2	53	570	336	-234	50	-	2	2	41	-	336	336	40	
Belavia Belarusian Airlines	2	-	-2	61	103	-	-103	55	-	-	0	50	-	-	0	0	45
Binair	6	-	-6	61	-	-	0	55	-	-	0	50	-	-	0	0	45
Blue Air	273	492	219	19	44,194	83,640	39,446	19	10	20	10	20	1,620	3,400	1,780	19	
Bluebird Cargo	297	310	13	30	-	-	0	55	10	10	0	30	-	-	0	45	
bmi regional	4	-	-4	61	203	-	-203	55	-	-	0	50	-	-	0	0	45
British Airways	5,109	5,128	19	4	669,286	642,100	-27,186	4	168	158	-10	4	21,732	19,992	-1,740	4	
Bulgaria Air	-	26	26	43	-	4,680	4,680	38	-	2	2	41	-	360	360	38	
CAVOK Air	4	-	-4	61	-	-	0	55	-	-	0	50	-	-	0	0	45
Cello Aviation	1	-	-1	61	171	-	-171	55	-	-	0	50	-	-	0	0	45
Cityjet	2,563	2,490	-73	5	243,689	236,553	-7,136	9	87	81	-6	5	8,265	7,695	-570	11	
Corendon Airlines	12	-	-12	61	2,344	-	-2,344	55	-	-	0	50	-	-	0	0	45
Croatia Airlines	12	-	-12	61	2,158	-	-2,158	55	-	-	0	50	-	-	0	0	45
CSA Czech Airlines	3	-	-3	61	403	-	-403	55	-	-	0	50	-	-	0	0	45
Danish Air Transport	16	9	-7	49	1,531	822	-709	46	2	2	0	41	136	132	-4	43	
Delta Airlines	802	868	66	12	176,580	248,100	71,520	8	28	28	0	12	6,300	8,204	1,904	10	
Denim Air	4	-	-4	61	310	-	-310	55	-	-	0	50	-	-	0	0	45
DT - DANU ORO TRANSPORTAS	2	-	-2	61	372	-	-372	55	-	-	0	50	-	-	0	0	45
Eastern Airways	110	1	-109	59	5,238	29	-5,209	54	4	1	-3	49	116	29	-87	44	
Emirates	868	868	-0	12	313,832	310,568	-3,264	7	28	28	0	12	10,624	9,996	-628	7	
Enter Air	28	12	-16	48	4,926	2,100	-2,826	42	1	-	-1	50	168	-	-168	45	
Estonian Air	1	-	-1	61	91	-	-91	55	-	-	0	50	-	-	0	0	45
Ethiopian Airlines	238	372	134	25	64,218	100,440	36,222	17	12	12	0	27	3,240	3,240	0	20	
Ethihad Airways	868	620	-248	15	228,346	203,420	-24,926	13	28	28	0	12	7,636	8,236	600	9	
Europe Airpost	42	72	30	39	6,076	10,584	4,508	33	-	4	4	36	-	588	588	34	
European Air Transport (DHU)	372	370	-2	27	-	-	0	55	12	12	0	27	-	-	0	0	45
Eurowings	-	20	20	45	-	1,800	1,800	43	-	-	0	50	-	-	0	0	45
Federal Express	303	306	3	31	-	-	0	55	10	10	0	30	-	-	0	0	45
Finnair	370	552	182	17	36,993	55,200	18,207	24	12	18	6	21	1,200	1,800	600	26	
Flybe	2,610	2,232	-378	6	209,515	196,416	-13,099	14	84	72	-12	6	6,640	6,336	-304	14	
flyNiki	6	8	2	50	1,116	1,440	324	45	-	2	2	41	-	360	360	38	
Freebird Airlines	9	-	-9	61	1,674	-	-1,674	55	-	-	0	50	-	-	0	0	45
French Air Force	2	-	-2	61	27	-	-27	55	-	-	0	50	-	-	0	0	45
GA	3	-	-3	61	32	-	-32	55	1	-	-1	50	12	-	-12	45	
GEORGIAN AIRWAYS	2	-	-2	61	103	-	-103	55	-	-	0	50	-	-	0	0	45
GERMAN AIR FORCE	4	-	-4	61	254	-	-254	55	-	-	0	50	-	-	0	0	45
Germania	6	18	12	46	1,049	2,802	1,753	41	-	-	0	50	-	-	0	0	45
Germanwings	496	476	-20	20	71,064	71,520	456	20	16	16	0	22	2,280	2,400	120	22	
Go2Sky	4	-	-4	61	690	-	-690	55	-	-	0	50	-	-	0	0	45
Iberia	-	526	526	18	-	94,960	94,960	18	-	26	26	16	-	4,680	4,680	16	
Iberia Express	530	-	-530	61	95,418	-	-95,418	55	28	-	-28	50	5,040	-	-5,040	45	
Icelandair	14	8	-6	50	2,647	1,464	-1,183	44	-	-	0	50	-	-	0	0	45
Jet Time Airways	2	-	-2	61	-	-	0	55	-	-	0	50	-	-	0	0	45
Jet2.com	5	-	-5	61	807	-	-807	55	-	-	0	50	-	-	0	0	45
Jetairfly	-	2	2	53	-	378	378	47	-	-	0	50	-	-	0	0	45
Alba Star	48	89	41	37	8,081	15,168	7,087	31	1	4	3	36	170	680	510	31	
JORDAN AVIATION TRADE EST	2	-	-2	61	550	-	-550	55	-	-	0	50	-	-	0	0	45
Jota Aviation	5	-	-5	61	196	-	-196	55	-	-	0	50	-	-	0	0	45
Livingston Compagnia Aerea	-	-	0	61	-	-	0	55	-	-	0	50	-	-	0	0	45
Loganair	91	434	343	22	4,476	21,700	17,224	29	-	14	14	24	-	700	700	29	
LOT Polish Airlines	1	-	-1	61	116	-	-116	55	-	-	0	50	-	-	0	0	45
Lufthansa	1,708	1,753	45	8	320,814	324,819	4,005	6	56	56	0	8	10,776	10,416	-360	6	
Luxair	410	416	6	24	32,232	36,456	4,224	28	16	14	-2	24	1,220	1,284	64	28	
MALETH AERO	-	3	3	52	-	354	354	49	-	-	0	50	-	-	0	0	45
Malmo Aviation	2	2	0	53	231	224	-7	52	-	-	0	50	-	-	0	0	45
Mistral Air	-	36	36	41	-	6,048	6,048	37	2	2	0	41	336	336	0	40	
Nightexpress	2	-	-2	61	-	-	0	55	-	-	0	50	-	-	0	0	45
Norwegian	494	372	-122	25	91,793	69,180	-22,613	21	16	16	0	22	2,976	2,976	0	21	
Qatar Airways	1	-	-1	61	-	-	0	55	-	-	0	50	-	-	0	0	45
RVL Aviation	64	1	-63	59	-	-	0	55	2	-	-2	50	-	-	0	0	45
Ryanair	40,922	47,634	6,712	3	7,727,580	9,002,826	1,275,246	2	1,367	1,588	221	3	257,943	300,132	42,189	2	
S7 Airlines	25	24	-1	44	3,999	3,792	-207										

# Peak Week - Allocation and Slot Adjustment Distribution by Operator

Schedule: S16 Start



Operator	S16 allocated ATMs	SLOT ADJUSTMENTS (MINUTES OFF REQUESTED TIME)														Requests with NO slot allocated	
		0	5	10	15	20	25	30	35	40	45	50	55	60	>60		
Aegean Airlines	4	100.0%	0.0%	0.0%	0.0%	0.0%	0.0%	0.0%	0.0%	0.0%	0.0%	0.0%	0.0%	0.0%	0.0%	0.0%	-
Aer Lingus	1,780	96.6%	0.6%	1.1%	0.5%	0.6%	0.2%	0.1%	0.2%	0.0%	0.0%	0.1%	0.0%	0.0%	0.0%	0.0%	-
Air Canada	24	79.2%	0.0%	0.0%	4.2%	0.0%	16.7%	0.0%	0.0%	0.0%	0.0%	0.0%	0.0%	0.0%	0.0%	0.0%	-
Air Contractors	24	100.0%	0.0%	0.0%	0.0%	0.0%	0.0%	0.0%	0.0%	0.0%	0.0%	0.0%	0.0%	0.0%	0.0%	0.0%	-
Air Europa	2	100.0%	0.0%	0.0%	0.0%	0.0%	0.0%	0.0%	0.0%	0.0%	0.0%	0.0%	0.0%	0.0%	0.0%	0.0%	-
Air France	72	100.0%	0.0%	0.0%	0.0%	0.0%	0.0%	0.0%	0.0%	0.0%	0.0%	0.0%	0.0%	0.0%	0.0%	0.0%	-
Air Mediterranee	-	-	-	-	-	-	-	-	-	-	-	-	-	-	-	-	-
Air Moldova	4	100.0%	0.0%	-	0.0%	0.0%	0.0%	0.0%	0.0%	0.0%	0.0%	0.0%	0.0%	0.0%	0.0%	0.0%	-
Alba Star	4	50.0%	0.0%	-	0.0%	25.0%	25.0%	0.0%	0.0%	0.0%	0.0%	0.0%	0.0%	0.0%	0.0%	0.0%	-
Air Transat	6	66.7%	33.3%	0.0%	0.0%	0.0%	0.0%	0.0%	0.0%	0.0%	0.0%	0.0%	0.0%	0.0%	0.0%	0.0%	-
Alitalia	-	-	-	-	-	-	-	-	-	-	-	-	-	-	-	-	-
American Airlines	56	100.0%	0.0%	0.0%	0.0%	0.0%	0.0%	0.0%	0.0%	0.0%	0.0%	0.0%	0.0%	0.0%	0.0%	0.0%	-
Arkea	2	100.0%	0.0%	0.0%	0.0%	0.0%	0.0%	0.0%	0.0%	0.0%	0.0%	0.0%	0.0%	0.0%	0.0%	0.0%	-
Austrian Airlines	2	100.0%	0.0%	0.0%	0.0%	0.0%	0.0%	0.0%	0.0%	0.0%	0.0%	0.0%	0.0%	0.0%	0.0%	0.0%	-
Blue Air	20	90.0%	0.0%	10.0%	0.0%	0.0%	0.0%	0.0%	0.0%	0.0%	0.0%	0.0%	0.0%	0.0%	0.0%	0.0%	-
Bluebird Cargo	10	100.0%	0.0%	0.0%	0.0%	0.0%	0.0%	0.0%	0.0%	0.0%	0.0%	0.0%	0.0%	0.0%	0.0%	0.0%	-
British Airways	158	100.0%	0.0%	0.0%	0.0%	0.0%	0.0%	0.0%	0.0%	0.0%	0.0%	0.0%	0.0%	0.0%	0.0%	0.0%	-
Bulgaria Air	2	100.0%	0.0%	0.0%	0.0%	0.0%	0.0%	0.0%	0.0%	0.0%	0.0%	0.0%	0.0%	0.0%	0.0%	0.0%	-
Cityjet	81	97.5%	1.2%	1.2%	0.0%	0.0%	0.0%	0.0%	0.0%	0.0%	0.0%	0.0%	0.0%	0.0%	0.0%	0.0%	-
Danish Air Transport	2	100.0%	0.0%	0.0%	0.0%	0.0%	0.0%	0.0%	0.0%	0.0%	0.0%	0.0%	0.0%	0.0%	0.0%	0.0%	-
Delta Airlines	28	100.0%	0.0%	0.0%	0.0%	0.0%	0.0%	0.0%	0.0%	0.0%	0.0%	0.0%	0.0%	0.0%	0.0%	0.0%	-
Eastern Airways	1	100.0%	0.0%	0.0%	0.0%	0.0%	0.0%	0.0%	0.0%	0.0%	0.0%	0.0%	0.0%	0.0%	0.0%	0.0%	-
Emirates	28	100.0%	0.0%	0.0%	0.0%	0.0%	0.0%	0.0%	0.0%	0.0%	0.0%	0.0%	0.0%	0.0%	0.0%	0.0%	-
Enter Air	-	-	-	-	-	-	-	-	-	-	-	-	-	-	-	-	-
Ethiopian Airlines	12	83.3%	16.7%	0.0%	0.0%	0.0%	0.0%	0.0%	0.0%	0.0%	0.0%	0.0%	0.0%	0.0%	0.0%	0.0%	-
Ethihad Airways	28	75.0%	25.0%	0.0%	0.0%	0.0%	0.0%	0.0%	0.0%	0.0%	0.0%	0.0%	0.0%	0.0%	0.0%	0.0%	-
Europe Airpost	4	25.0%	0.0%	0.0%	0.0%	50.0%	0.0%	0.0%	0.0%	25.0%	0.0%	0.0%	0.0%	0.0%	0.0%	0.0%	-
European Air Transport (DHL)	12	100.0%	0.0%	0.0%	0.0%	0.0%	0.0%	0.0%	0.0%	0.0%	0.0%	0.0%	0.0%	0.0%	0.0%	0.0%	-
Federal Express	10	100.0%	0.0%	0.0%	0.0%	0.0%	0.0%	0.0%	0.0%	0.0%	0.0%	0.0%	0.0%	0.0%	0.0%	0.0%	-
Finnair	18	100.0%	0.0%	0.0%	0.0%	0.0%	0.0%	0.0%	0.0%	0.0%	0.0%	0.0%	0.0%	0.0%	0.0%	0.0%	-
Flybe	72	98.6%	1.4%	0.0%	0.0%	0.0%	0.0%	0.0%	0.0%	0.0%	0.0%	0.0%	0.0%	0.0%	0.0%	0.0%	-
flyNiki	2	100.0%	0.0%	0.0%	0.0%	0.0%	0.0%	0.0%	0.0%	0.0%	0.0%	0.0%	0.0%	0.0%	0.0%	0.0%	-
GA	-	-	-	-	-	-	-	-	-	-	-	-	-	-	-	-	-
Germanwings	16	100.0%	0.0%	0.0%	0.0%	0.0%	0.0%	0.0%	0.0%	0.0%	0.0%	0.0%	0.0%	0.0%	0.0%	0.0%	-
Iberia	26	69.2%	30.8%	0.0%	0.0%	0.0%	0.0%	0.0%	0.0%	0.0%	0.0%	0.0%	0.0%	0.0%	0.0%	0.0%	-
Iberia Express	-	-	-	-	-	-	-	-	-	-	-	-	-	-	-	-	-
Alba Star	4	50.0%	0.0%	0.0%	0.0%	25.0%	25.0%	0.0%	0.0%	0.0%	0.0%	0.0%	0.0%	0.0%	0.0%	0.0%	-
Livingston Compagnia Aerea	-	-	-	-	-	-	-	-	-	-	-	-	-	-	-	-	-
Loganair	14	100.0%	0.0%	0.0%	0.0%	0.0%	0.0%	0.0%	0.0%	0.0%	0.0%	0.0%	0.0%	0.0%	0.0%	0.0%	-
Lufthansa	56	100.0%	0.0%	0.0%	0.0%	0.0%	0.0%	0.0%	0.0%	0.0%	0.0%	0.0%	0.0%	0.0%	0.0%	0.0%	-
Luxair	14	64.3%	35.7%	0.0%	0.0%	0.0%	0.0%	0.0%	0.0%	0.0%	0.0%	0.0%	0.0%	0.0%	0.0%	0.0%	-
Mistral Air	2	100.0%	0.0%	0.0%	0.0%	0.0%	0.0%	0.0%	0.0%	0.0%	0.0%	0.0%	0.0%	0.0%	0.0%	0.0%	-
New Age Airlines	-	-	-	-	-	-	-	-	-	-	-	-	-	-	-	-	4
Norwegian	16	100.0%	0.0%	0.0%	0.0%	0.0%	0.0%	0.0%	0.0%	0.0%	0.0%	0.0%	0.0%	0.0%	0.0%	0.0%	-
RVL Aviation	-	-	-	-	-	-	-	-	-	-	-	-	-	-	-	-	-
Ryanair	1,588	99.2%	0.3%	0.1%	0.1%	0.1%	0.1%	0.0%	0.1%	0.0%	0.0%	0.0%	0.0%	0.0%	0.0%	0.0%	-
S7 Airlines	2	100.0%	0.0%	0.0%	0.0%	0.0%	0.0%	0.0%	0.0%	0.0%	0.0%	0.0%	0.0%	0.0%	0.0%	0.0%	-
SAS Scandinavian	42	100.0%	0.0%	0.0%	0.0%	0.0%	0.0%	0.0%	0.0%	0.0%	0.0%	0.0%	0.0%	0.0%	0.0%	0.0%	-
Star Air	20	100.0%	0.0%	0.0%	0.0%	0.0%	0.0%	0.0%	0.0%	0.0%	0.0%	0.0%	0.0%	0.0%	0.0%	0.0%	-
Swiss International	26	100.0%	0.0%	0.0%	0.0%	0.0%	0.0%	0.0%	0.0%	0.0%	0.0%	0.0%	0.0%	0.0%	0.0%	0.0%	-
Thomson Airways	31	100.0%	0.0%	0.0%	0.0%	0.0%	0.0%	0.0%	0.0%	0.0%	0.0%	0.0%	0.0%	0.0%	0.0%	0.0%	-
TNT Airways	10	100.0%	0.0%	0.0%	0.0%	0.0%	0.0%	0.0%	0.0%	0.0%	0.0%	0.0%	0.0%	0.0%	0.0%	0.0%	-
Transavia	-	-	-	-	-	-	-	-	-	-	-	-	-	-	-	-	-
Transavia France	18	77.8%	0.0%	22.2%	0.0%	0.0%	0.0%	0.0%	0.0%	0.0%	0.0%	0.0%	0.0%	0.0%	0.0%	0.0%	-
Travel Service	4	100.0%	0.0%	0.0%	0.0%	0.0%	0.0%	0.0%	0.0%	0.0%	0.0%	0.0%	0.0%	0.0%	0.0%	0.0%	-
Tunisair	-	-	-	-	-	-	-	-	-	-	-	-	-	-	-	-	-
Turkish Airlines	28	100.0%	0.0%	0.0%	0.0%	0.0%	0.0%	0.0%	0.0%	0.0%	0.0%	0.0%	0.0%	0.0%	0.0%	0.0%	-
United Airlines	56	100.0%	0.0%	0.0%	0.0%	0.0%	0.0%	0.0%	0.0%	0.0%	0.0%	0.0%	0.0%	0.0%	0.0%	0.0%	-
US Airways	-	-	-	-	-	-	-	-	-	-	-	-	-	-	-	-	-
Van Air Europe	24	66.7%	8.3%	8.3%	8.3%	0.0%	0.0%	4.2%	0.0%	0.0%	0.0%	0.0%	0.0%	0.0%	0.0%	4.2%	-
Vueling	12	100.0%	0.0%	0.0%	0.0%	0.0%	0.0%	0.0%	0.0%	0.0%	0.0%	0.0%	0.0%	0.0%	0.0%	0.0%	-
West Atlantic Cargo	5	100.0%	0.0%	0.0%	0.0%	0.0%	0.0%	0.0%	0.0%	0.0%	0.0%	0.0%	0.0%	0.0%	0.0%	0.0%	-
Westjet	14	100.0%	0.0%	0.0%	0.0%	0.0%	0.0%	0.0%	0.0%	0.0%	0.0%	0.0%	0.0%	0.0%	0.0%	0.0%	-
Woodgate Aviation	8	100.0%	0.0%	0.0%	0.0%	0.0%	0.0%	0.0%	0.0%	0.0%	0.0%	0.0%	0.0%	0.0%	0.0%	0.0%	-
WOW Air	10	100.0%	0.0%	0.0%	0.0%	0.0%	0.0%	0.0%	0.0%	0.0%	0.0%	0.0%	0.0%	0.0%	0.0%	0.0%	-
<b>TOTAL</b>	<b>4,514</b>	<b>97.2%</b>	<b>1.0%</b>	<b>0.7%</b>	<b>0.3%</b>	<b>0.3%</b>	<b>0.2%</b>	<b>0.0%</b>	<b>0.1%</b>	<b>0.0%</b>	<b>0.0%</b>	<b>0.0%</b>	<b>0.0%</b>	<b>0.0%</b>	<b>0.0%</b>	<b>0.0%</b>	<b>4</b>

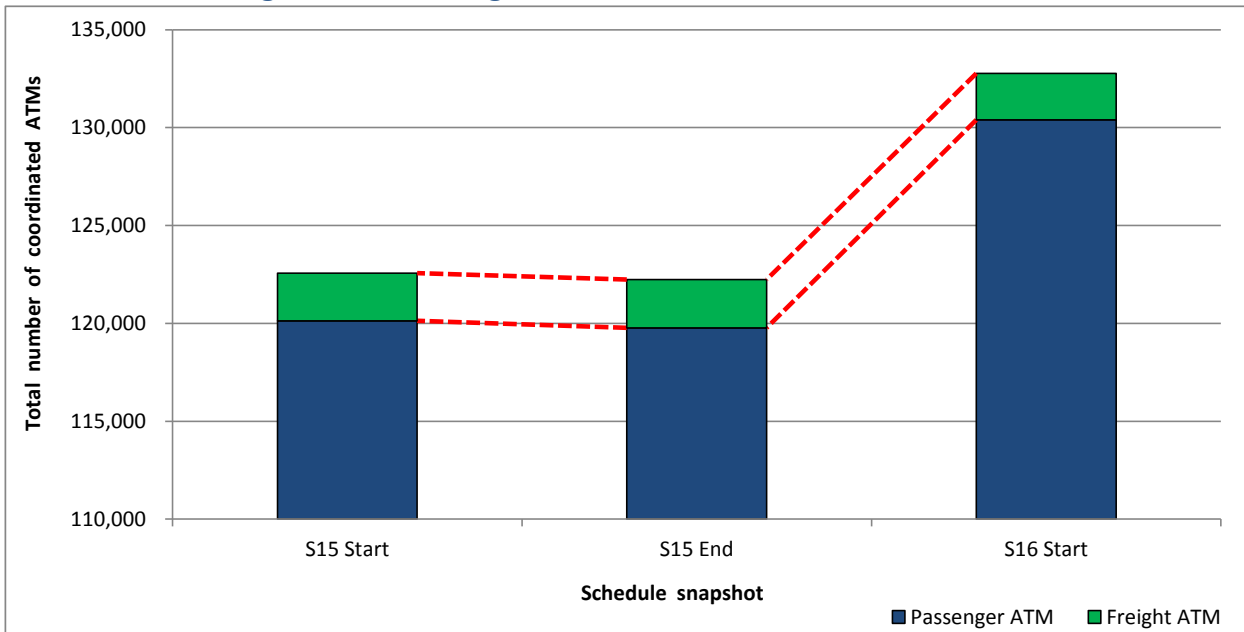
Operators with 0 'allocated ATMs' and 0 'Requests with NO slot allocated' in S16, are included in this list due to having slots allocated in either S15 Start or S15 End schedules.

## Significant Route Changes

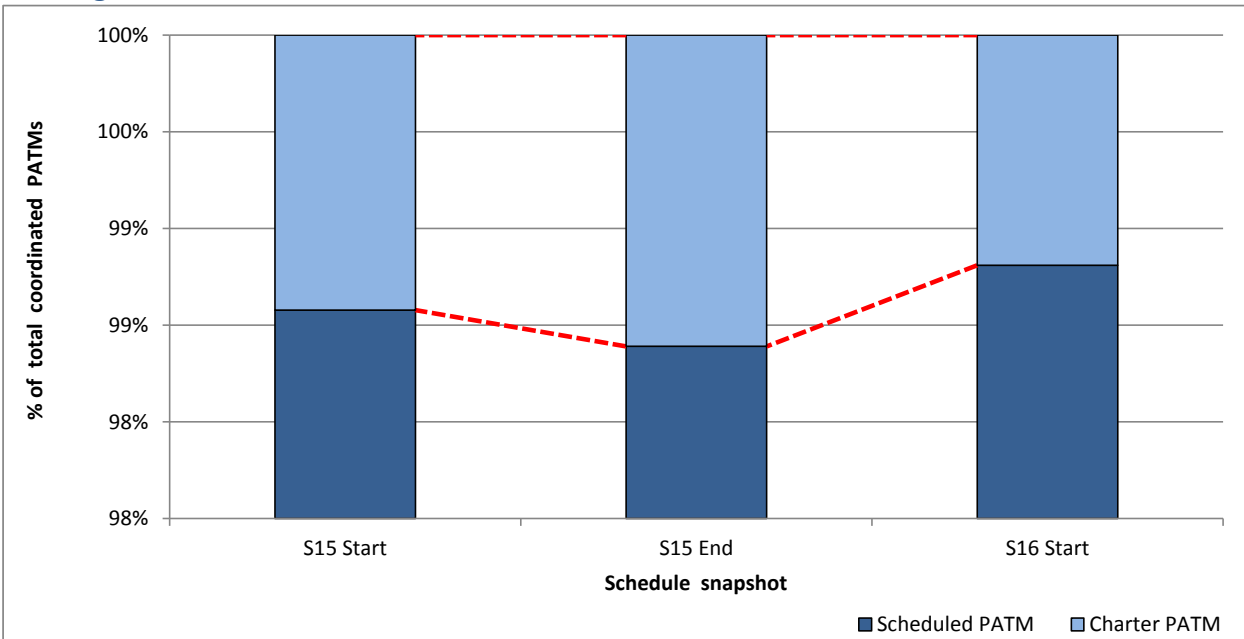


Operator	Category	Description of change from S15 schedule to S16 schedule
Aegean Airlines	<b>NEW</b>	Athens
AER ARANN	<b>CANCELLED</b>	Cardiff, Cork & Southend
Aer Lingus	<b>NEW</b>	Hartford, New York (EWR), Los Angeles, Murcia, Montpellier & Florence
Aer Lingus	CHANGE	Decrease Amsterdam, Bologna, Brussels, Paris, Cardiff, Dublin, Fuerteventura, London Gatwick, Orlando, Nantes, Cork & Prague
Aer Lingus	CHANGE	Increase Lanzarote, Malaga, Alicante, Bristol, Doncaster, Edinburgh, Faro, Glasgow, Washington, Jersey, London Heathrow, Lisbon, Liverpool, Madrid, Manchester, Milan, Naples, Nice, Newcastle, Newquay, Chicago, Perpignan, Pula, Santiago De Compostela & San Francisco
Aer Lingus	<b>CANCELLED</b>	Agadir, Bodrum, Copenhagen, Las Vegas, Monastir, Shannon & Stansted
Air Canada	<b>NEW</b>	Vancouver
Air Contractors	<b>CANCELLED</b>	Izmir & Palma
Alitalia	<b>CANCELLED</b>	Rome
American Airlines	CHANGE	Increase Charlotte, New York (JFK), Chicago & Philadelphia
Atlantic Airways	<b>CANCELLED</b>	Birmingham, Cambridge, Coventry, Nottingham & Farnborough
Blue Air	<b>NEW</b>	Cluj-Napoca (Romania)
Bluebird Cargo	CHANGE	Increase Keflavik
British Airways	CHANGE	Increase London City & London Heathrow
Bulgaria Air	<b>NEW</b>	Bourgas
Cityjet	<b>NEW</b>	Birmingham
Cityjet	CHANGE	Decrease Paris, Cardiff & Shannon. Increase London City, Manchester & Knock
Corendon Airlines	<b>CANCELLED</b>	Antalya
Delta Airlines	CHANGE	Increase Atlanta & New York (JFK)
Emirates	CHANGE	Increase Dubai
Enter Air	<b>CANCELLED</b>	Cardiff
Ethiopian Airlines	CHANGE	Increase Addis Ababa, Washington, Los Angeles & Toronto
Etihad Airways	CHANGE	Decrease Abu Dhabi
Europe Airpost	CHANGE	Increase Nottingham & Shannon
Eurowings	<b>NEW</b>	Dusseldorf
Flybe	<b>CANCELLED</b>	Bournemouth, Inverness & London City
Freebird Airlines	<b>CANCELLED</b>	Antalya
Loganair	CHANGE	Increase Inverness
Lufthansa	CHANGE	Increase Munich
Mistral Air	<b>CANCELLED</b>	Verona
Ryanair	<b>NEW</b>	Athens, Lublin & Vigo
Ryanair	CHANGE	Decrease Lanzarote, Gerona, Kaunas, Reus & Riga
Ryanair	CHANGE	Increase Malaga, Amsterdam, Barcelona, Birmingham, Brussels, Budapest, Paris, Chania, Edinburgh, Nottingham, Glasgow, Ibiza, London Gatwick, Liverpool, London Luton, Madrid, Berlin, Tallin, Venice, Manchester, Newcastle, Palma, Palermo, Poznan, Florence & Rome
Ryanair	<b>CANCELLED</b>	Alghero, Cardiff & Shannon
SAS Scandinavian	CHANGE	Increase Stockholm. Decrease Copenhagen & Oslo
SAS Scandinavian	<b>CANCELLED</b>	Gothenburg
Swiss International	CHANGE	Increase Geneva & Zurich
TNT Airways	CHANGE	Increase Liege
Turkish Airlines	CHANGE	Increase Istanbul
United Airlines	CHANGE	Increase New York (EWR), Washington & Chicago
Vueling	CHANGE	Increase Barcelona
Westjet	CHANGE	Decrease Toronto

## Total ATMs: Passenger ATMs vs. Freight ATMs



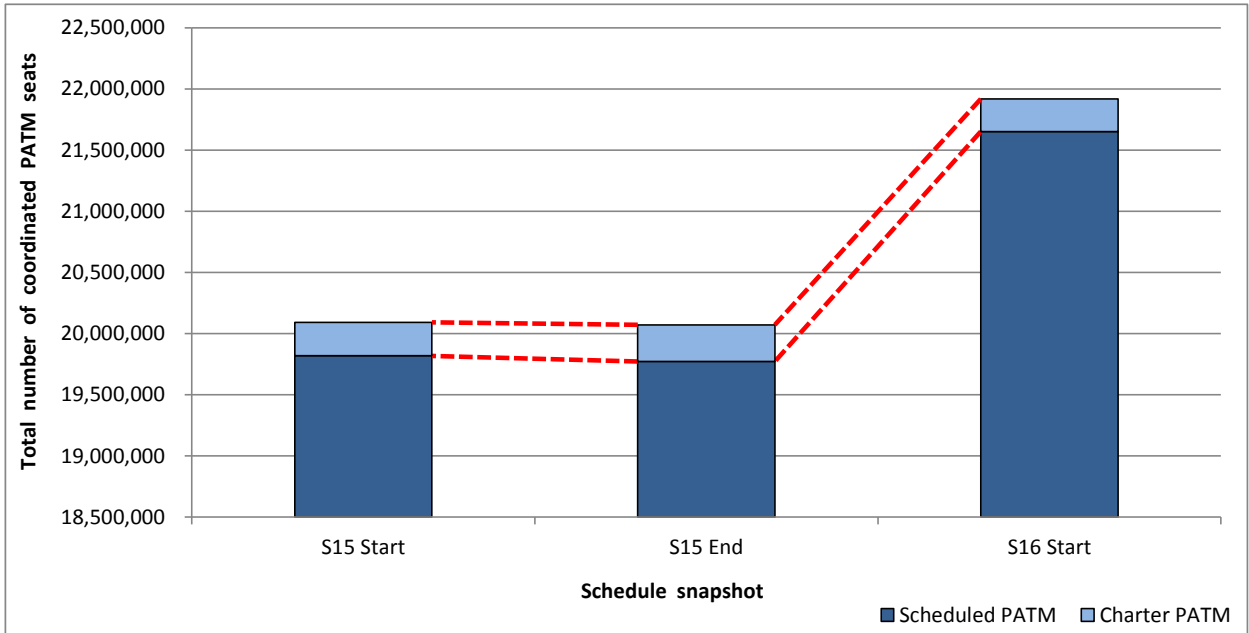
## Passenger ATMs: Scheduled vs. Charter



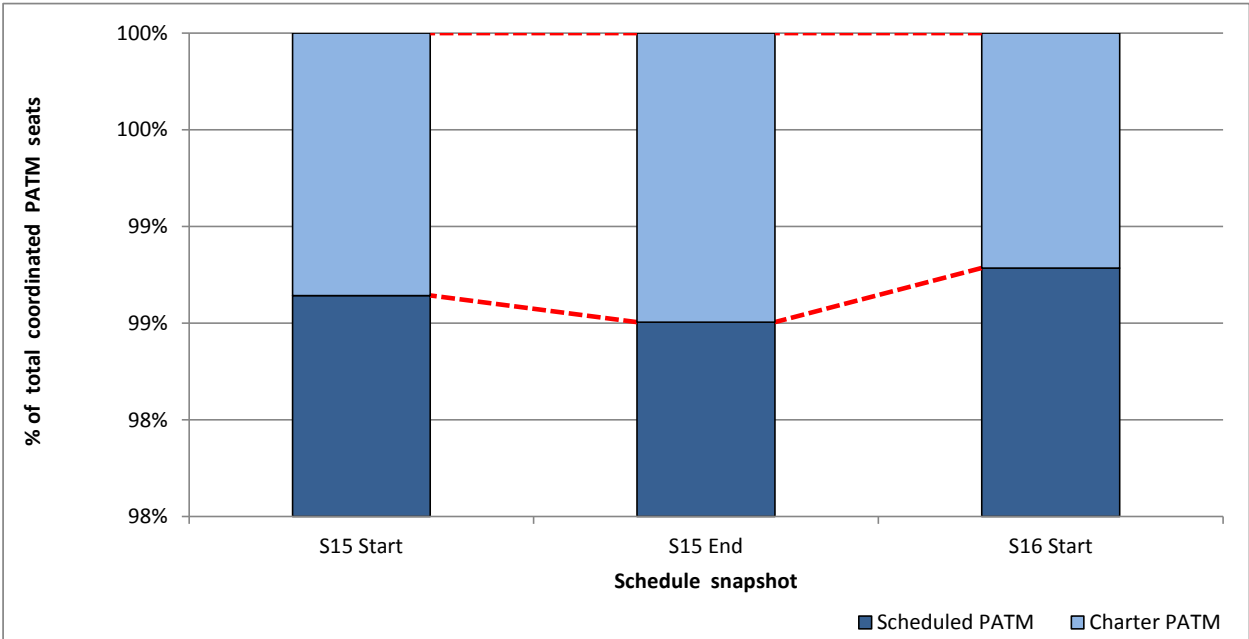
# Full Season - PATM Seats Analysis



## Total Passenger ATM seats: Scheduled vs. Charter



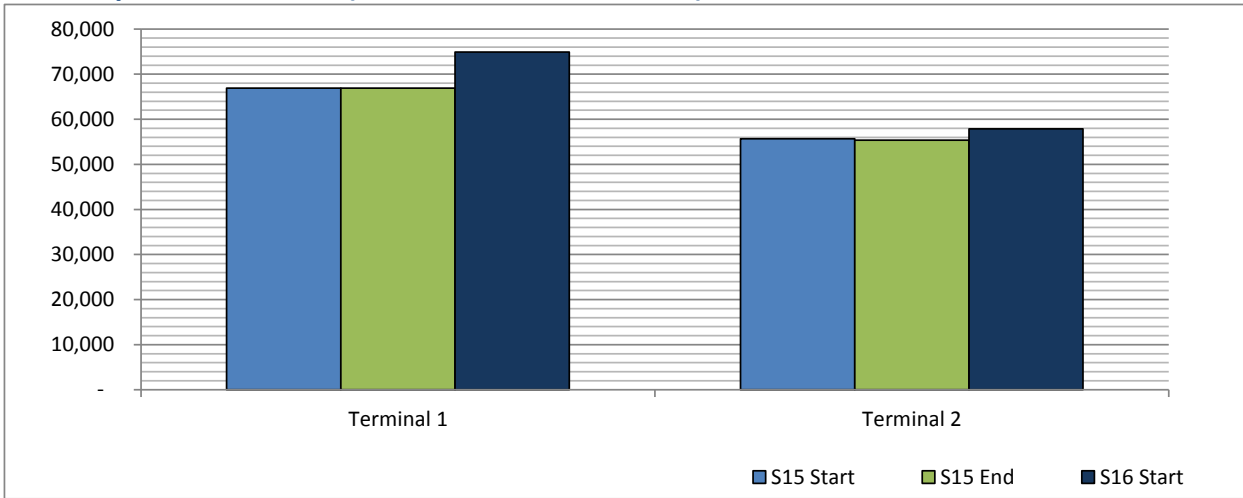
## Passenger ATM seats: Scheduled vs. Charter



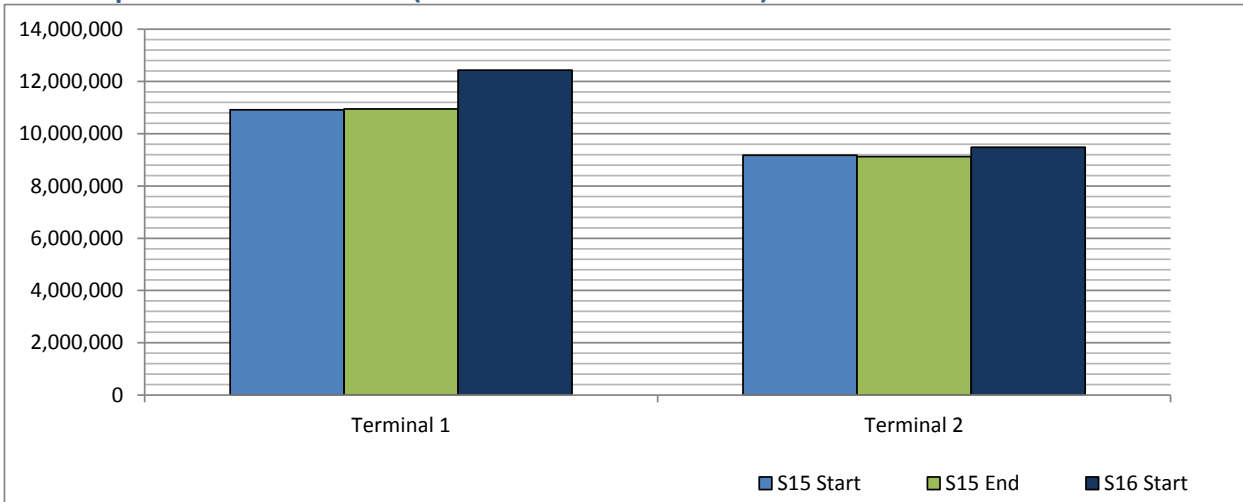
# Full Season - Terminal Analysis



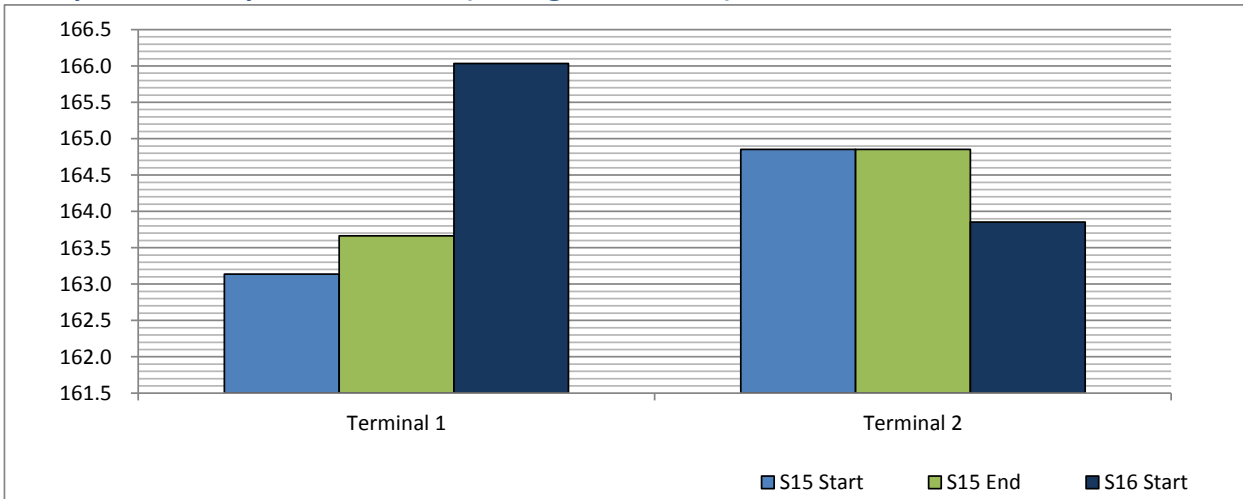
**Air Transport Movements (total allocated for season)**



**Air Transport Movement Seats (total allocated for season)**



**Seats per Air Transport Movement (average for season)**

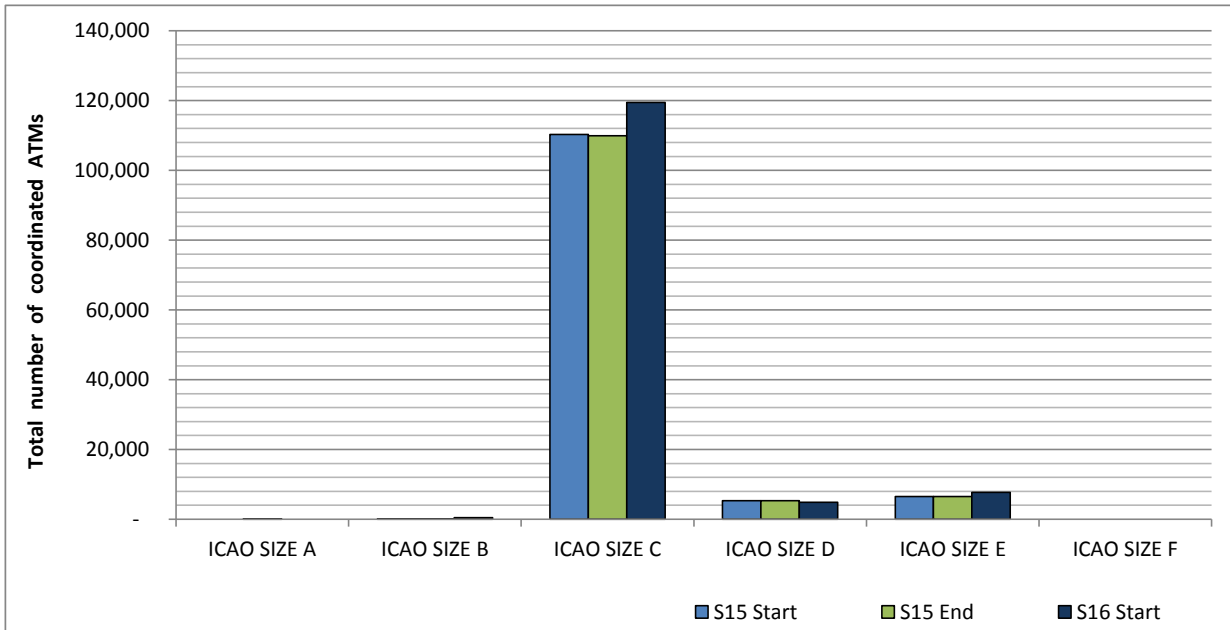




# Full Season - Aircraft Size Analysis

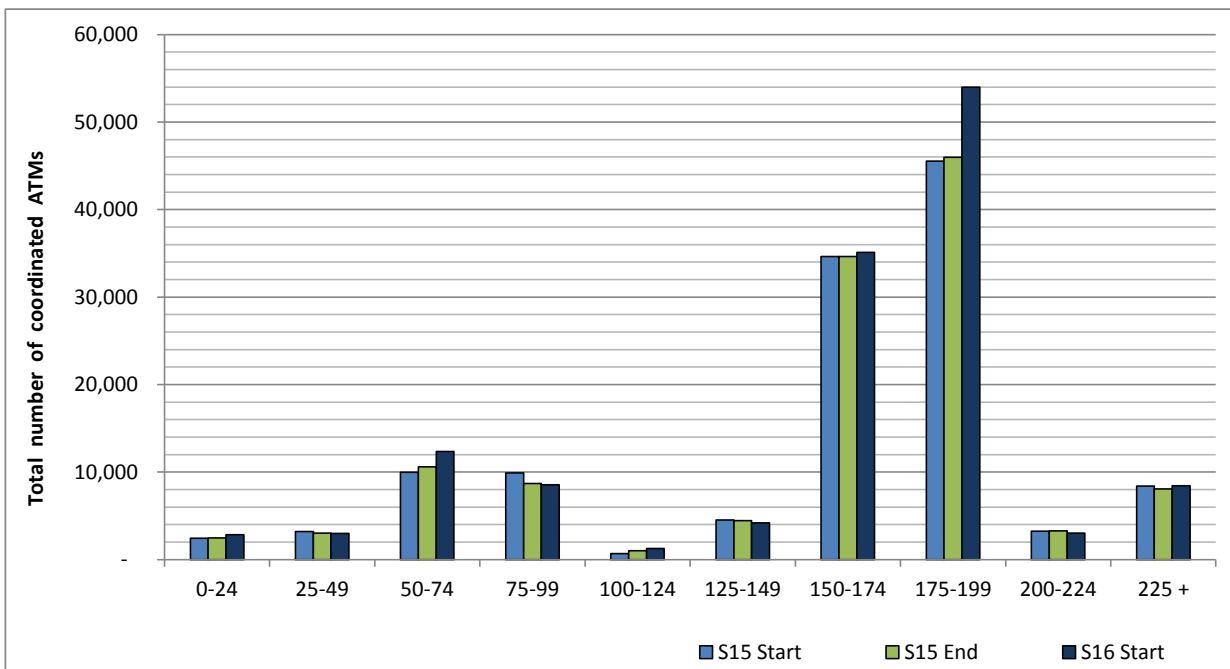


## ICAO size designation



Note: See Glossary for definitions of ICAO SIZE groupings

## Air Transport Movement seat distribution

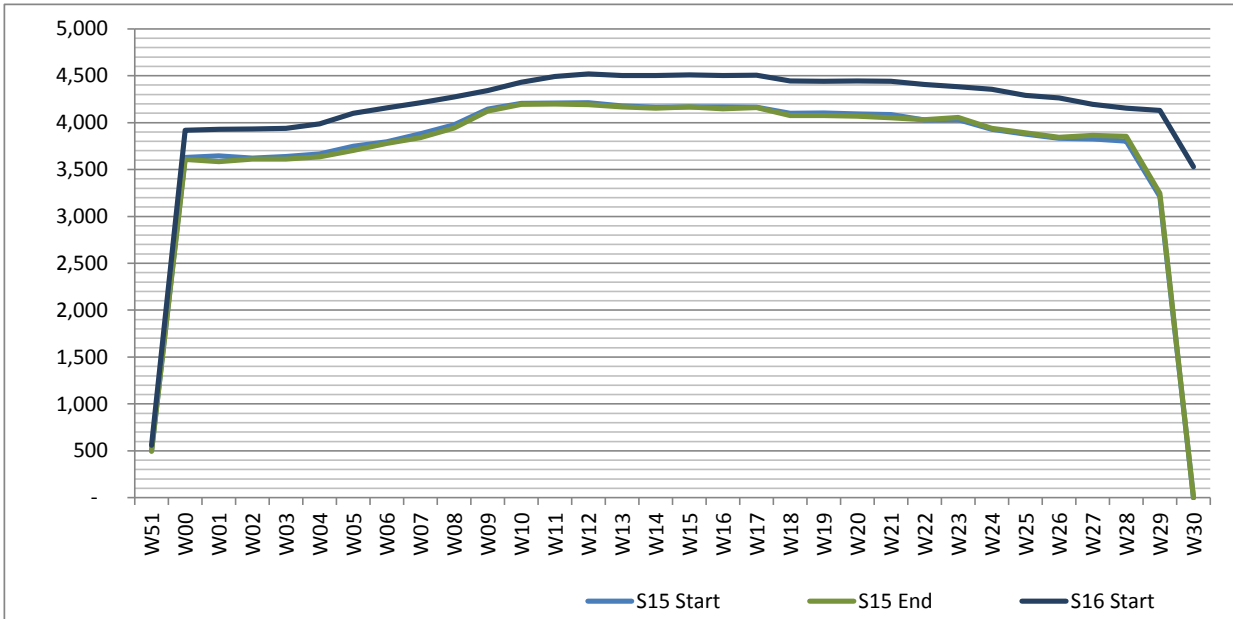


Note: FREIGHT-ONLY services with 0 seats are included in the first seat band '0-24'

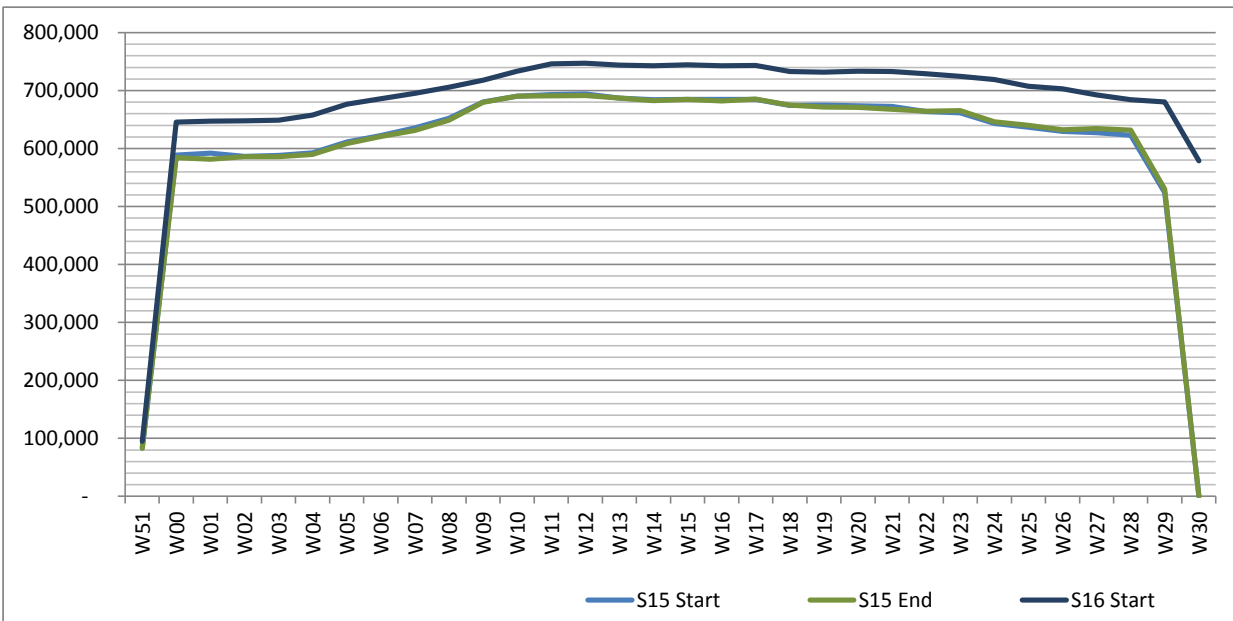
# Full Season - Seasonality



**Air Transport Movements by week of season**



**Air Transport Movement Seats by week of season**



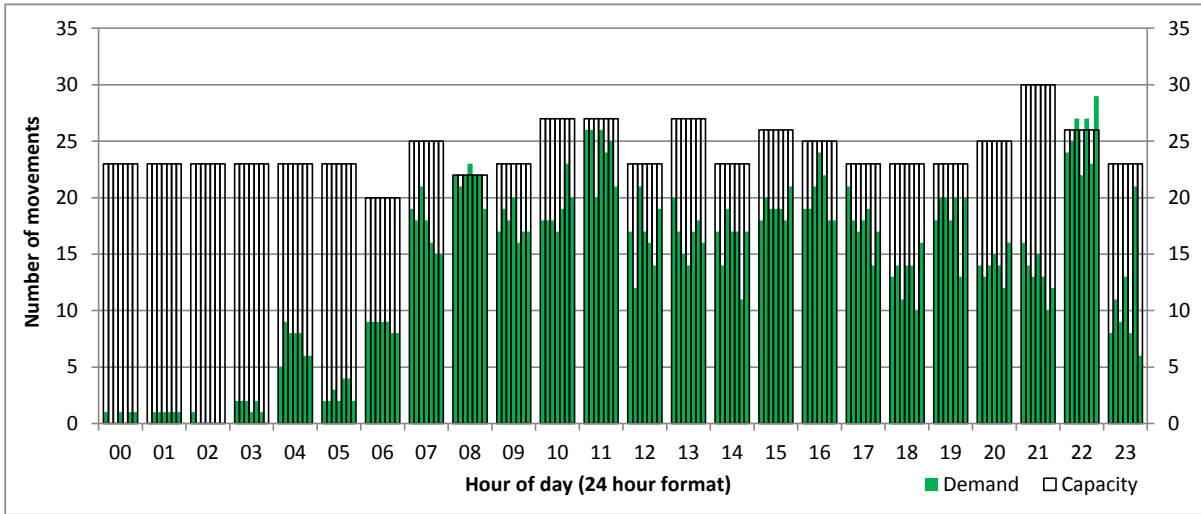
# Peak Week - Hourly Runway Demand

Schedule: S16 Start



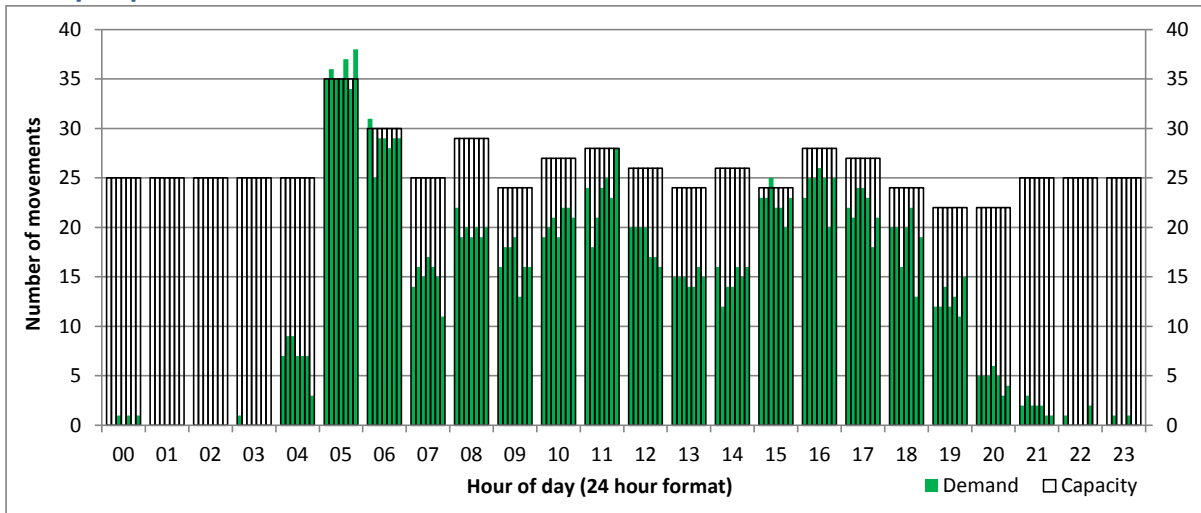
## Hourly Arrival Demand

Time: UTC



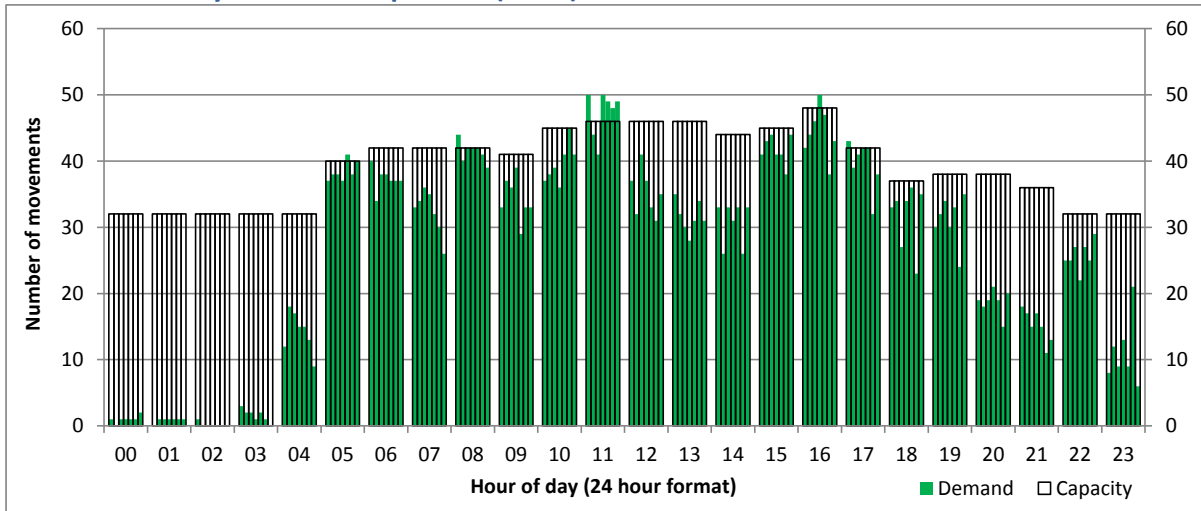
## Hourly Departure Demand

Time: UTC



## Combined Hourly Arrival & Departure (Total) Demand

Time: UTC



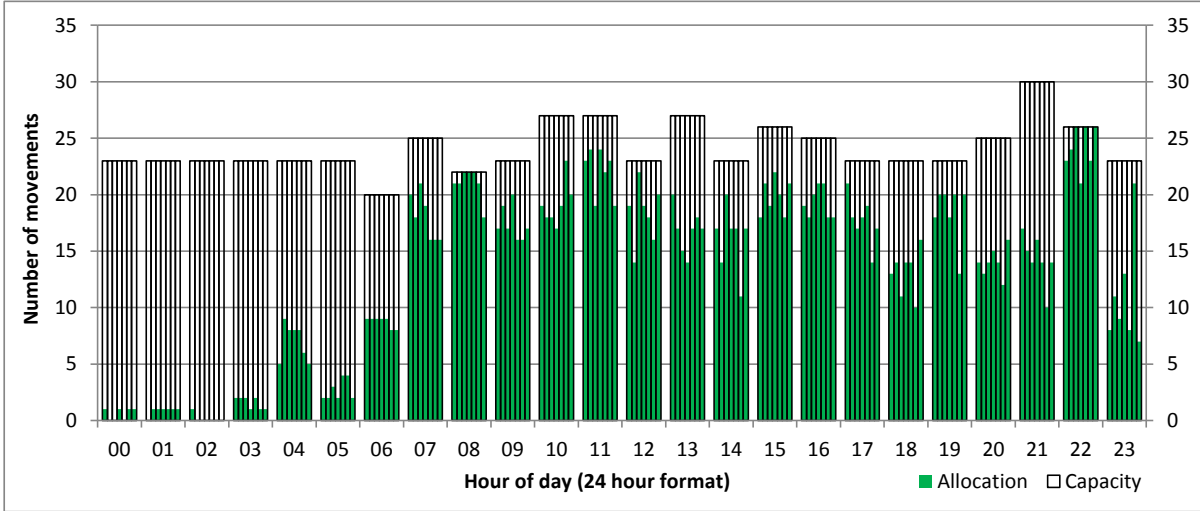
# Peak Week - Hourly Runway Allocation

Schedule: S16 Start



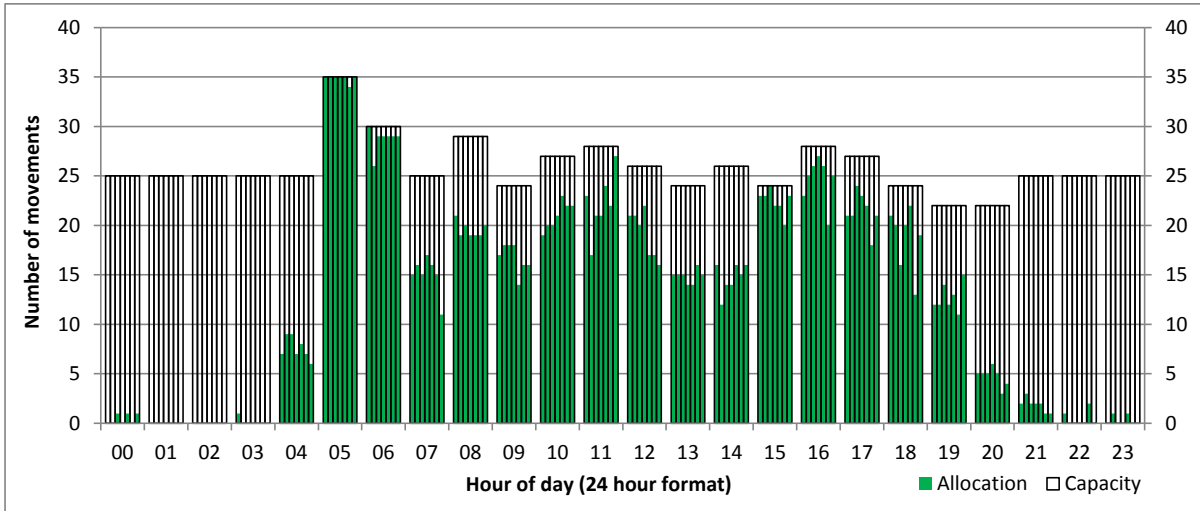
## Hourly Arrival Allocation

Time: UTC



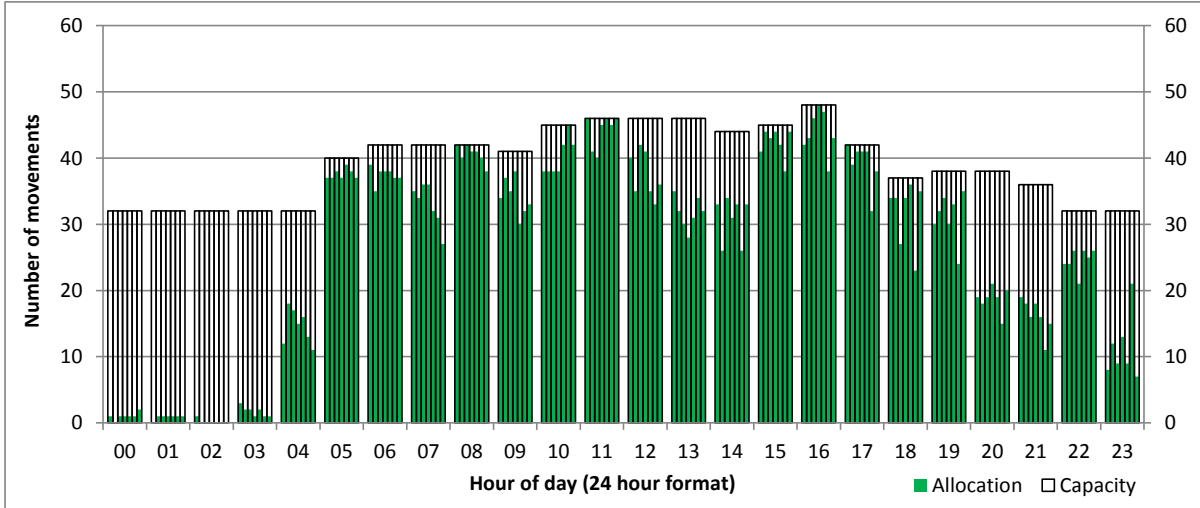
## Hourly Departure Allocation

Time: UTC



## Combined Hourly Arrival & Departure (Total) Allocation

Time: UTC



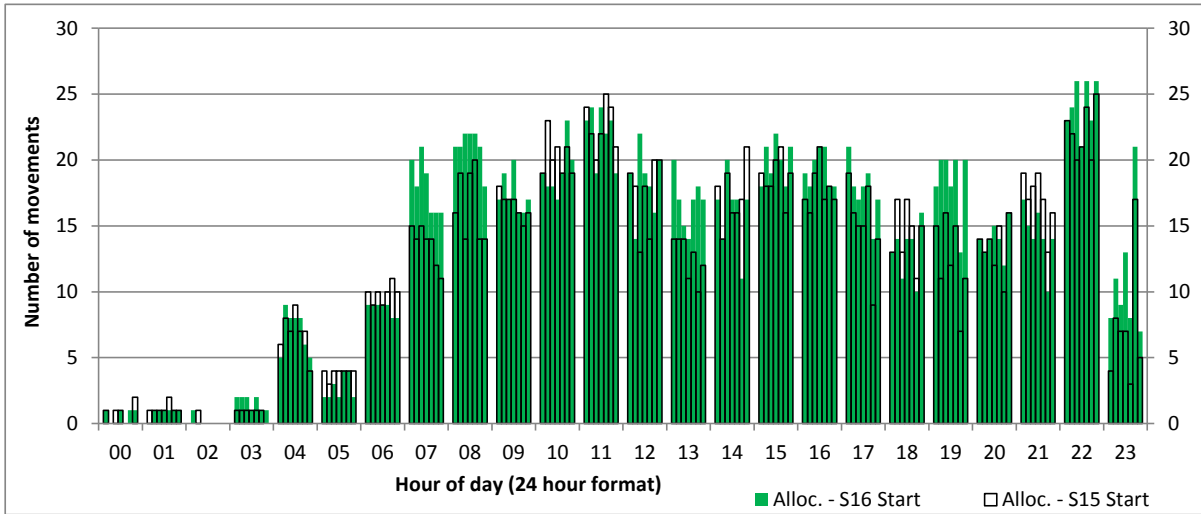
# Peak Week - Runway Allocation Comparison

Comparison of S16 Start vs. S15 Start



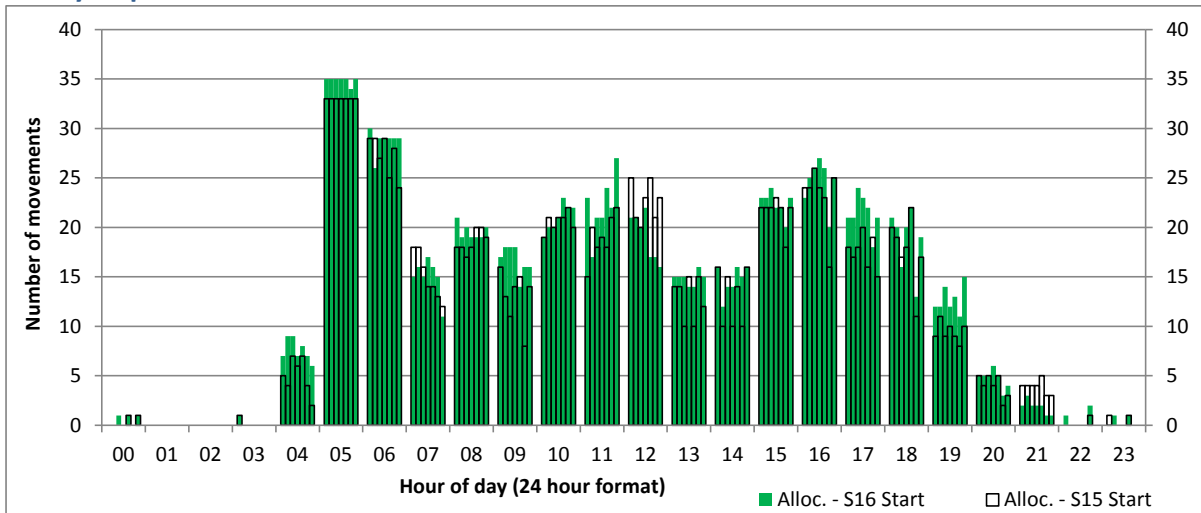
## Hourly Arrival Allocation

Time: UTC



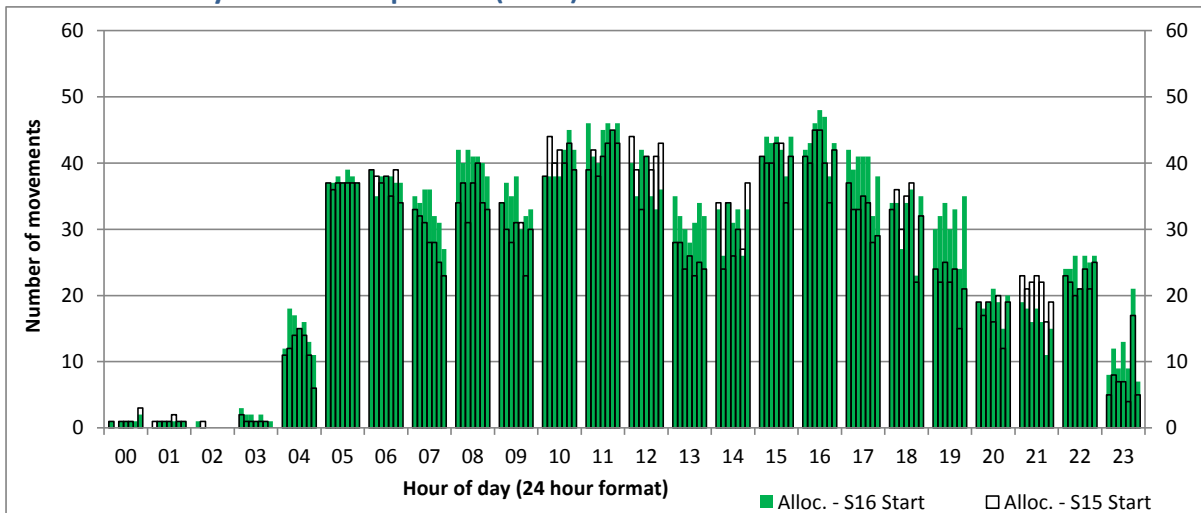
## Hourly Departure Allocation

Time: UTC



## Combined Hourly Arrival & Departure (Total) Allocation

Time: UTC



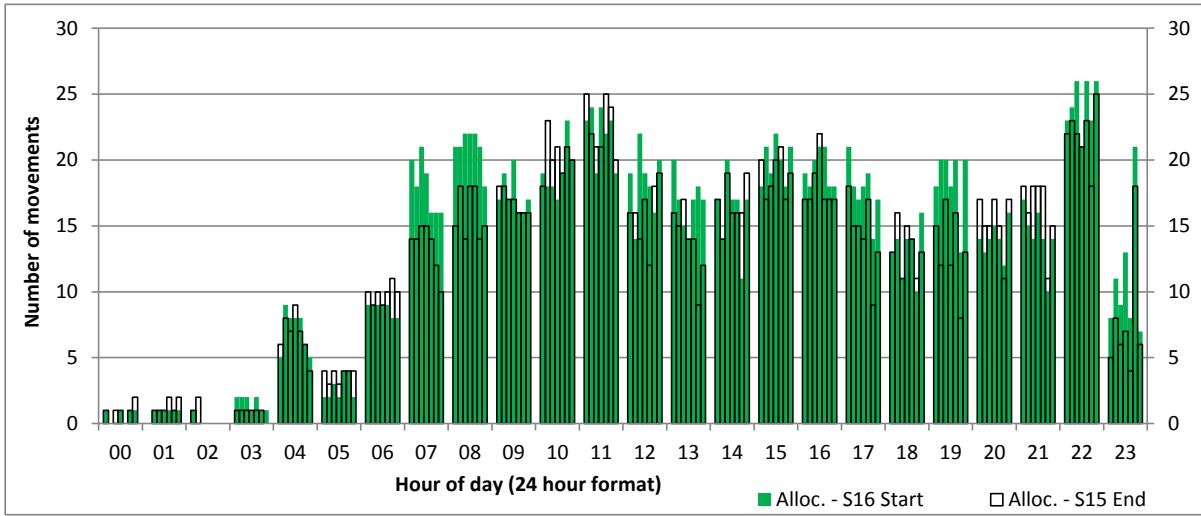
# Peak Week - Runway Allocation Comparison



Comparison of S16 Start vs. S15 End

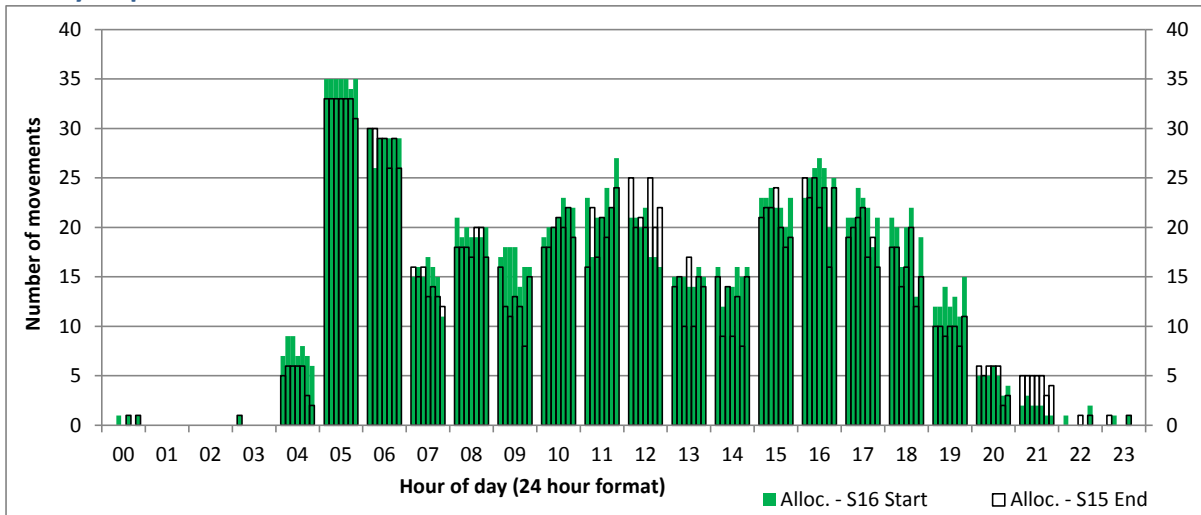
## Hourly Arrival Allocation

Time: UTC



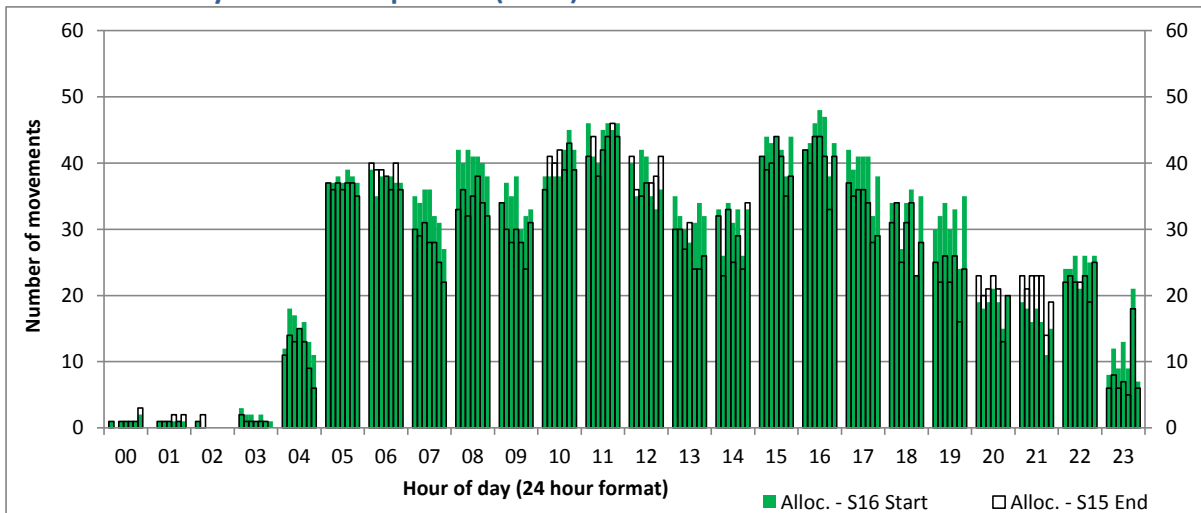
## Hourly Departure Allocation

Time: UTC



## Combined Hourly Arrival & Departure (Total) Allocation

Time: UTC



# Peak Week - Passengers Histogram

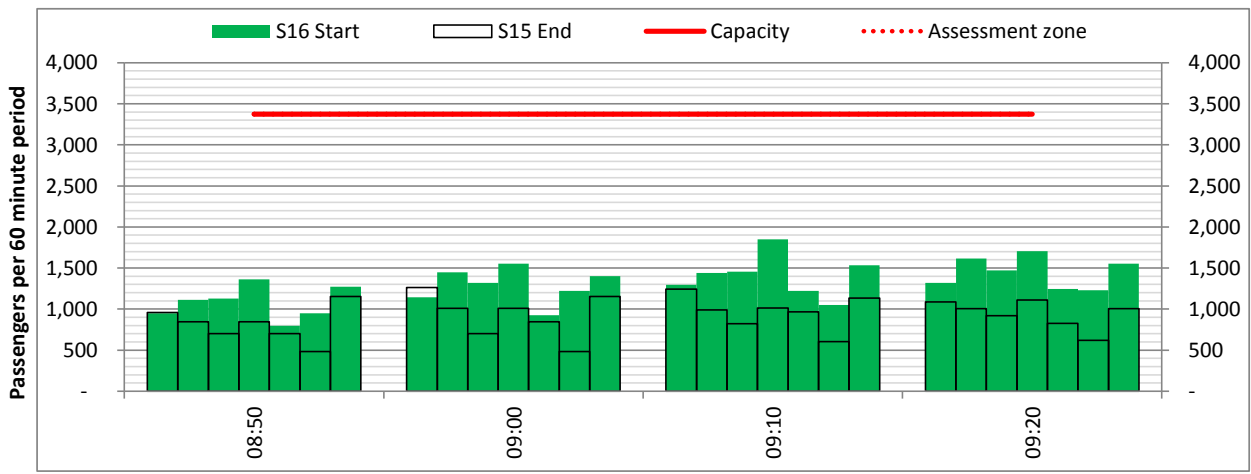
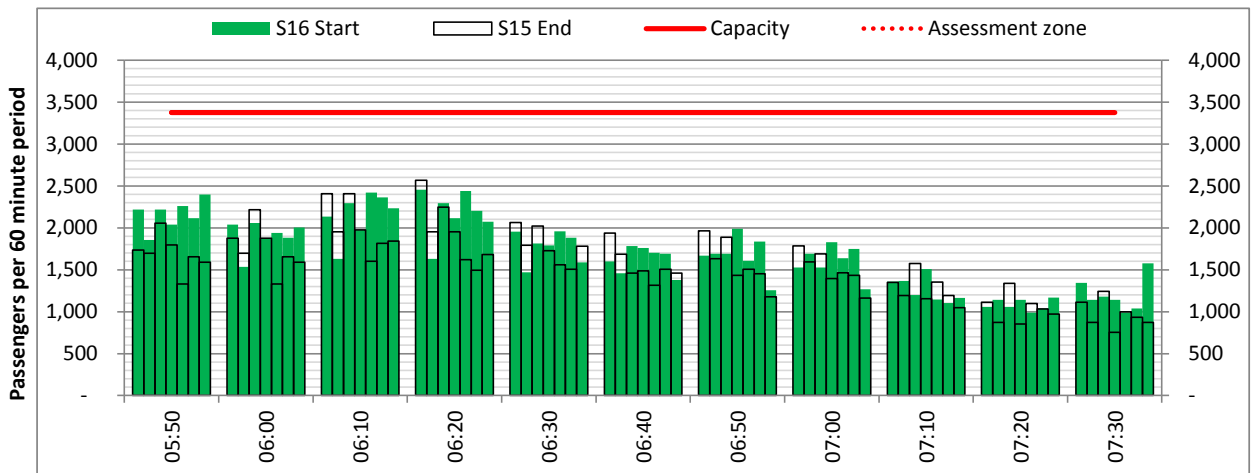
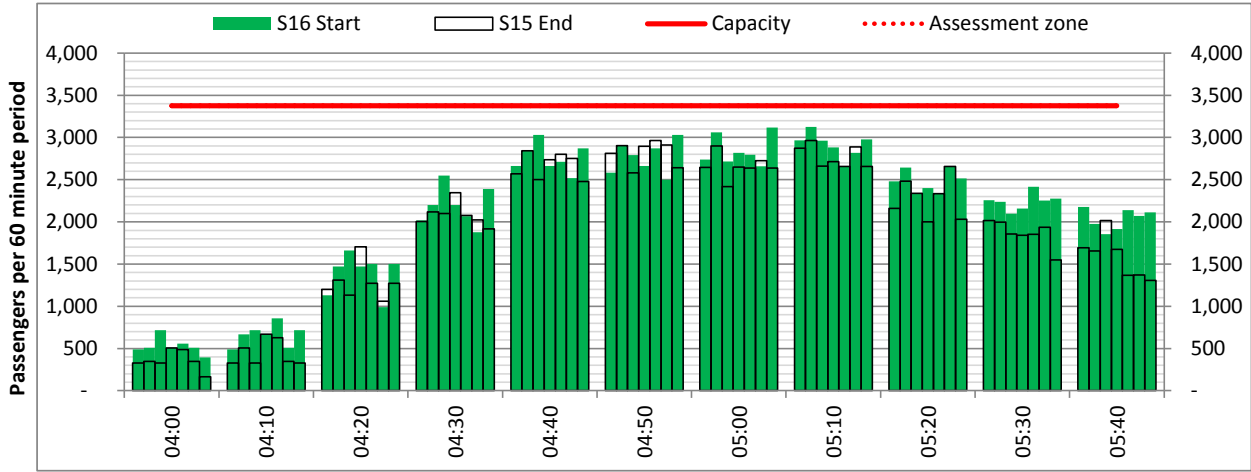
DEPARTURE - 60 minute count rolling every 10 mins (T60/10)



Terminals: 1

Operators: All Operators

Days: 1234567



# Peak Week - Passengers Histogram

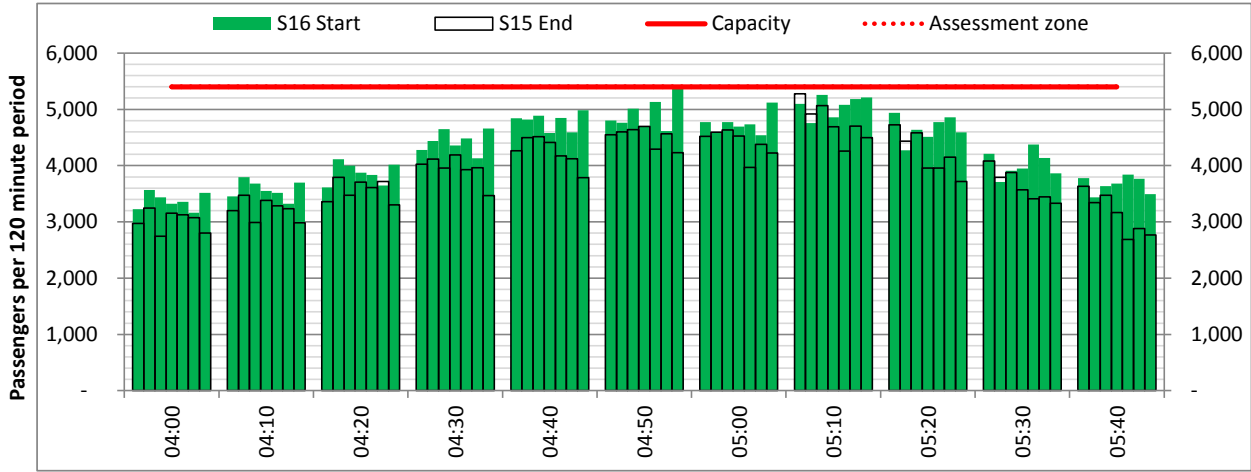
DEPARTURE - 120 minute count rolling every 10 mins (T120/10)



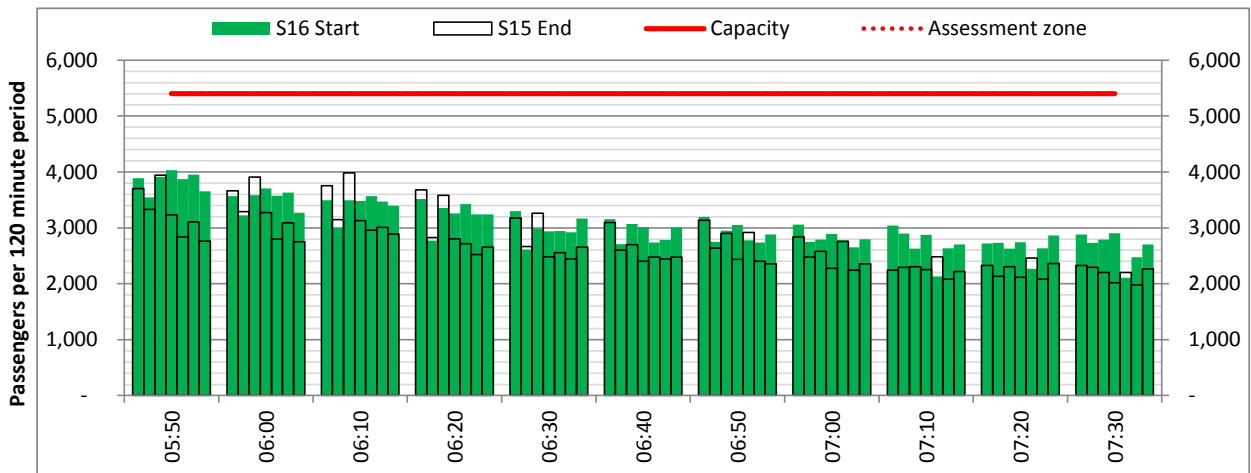
Terminals: 1

Operators: All Operators

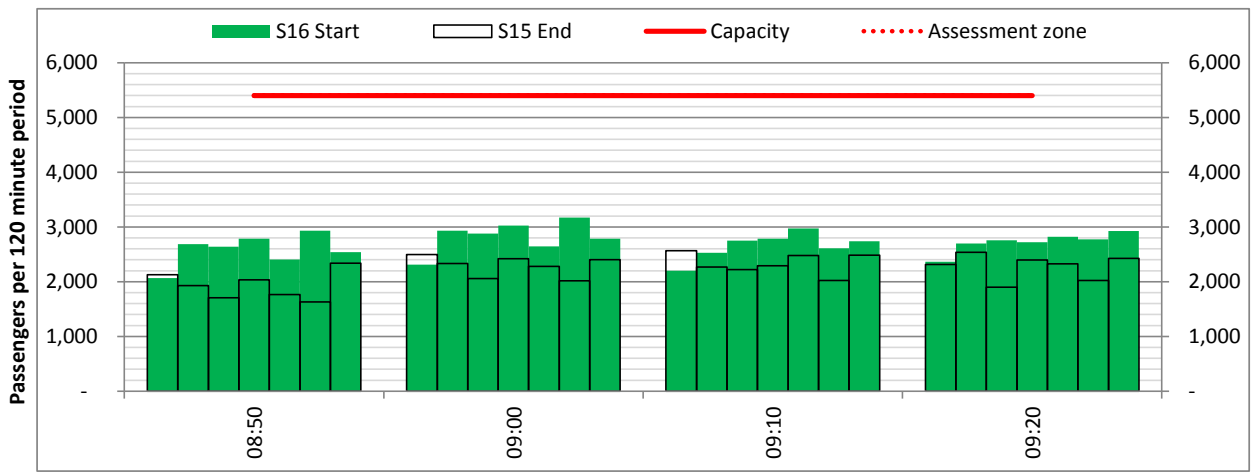
Days: 1234567



Start of count period - Time: UTC



Start of count period - Time: UTC



Start of count period - Time: UTC



# Peak Week - Passengers Histogram

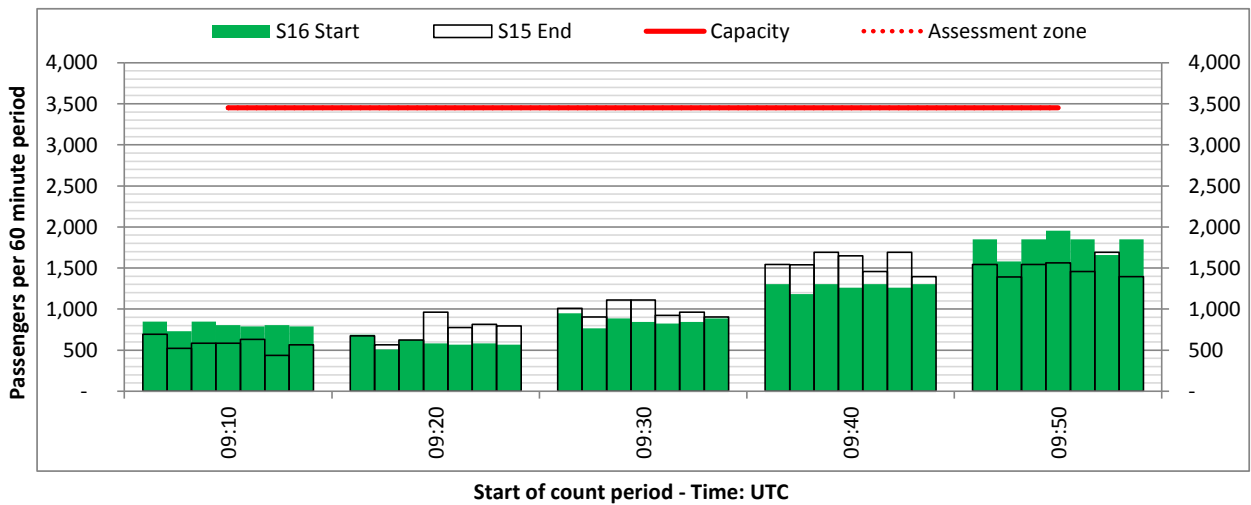
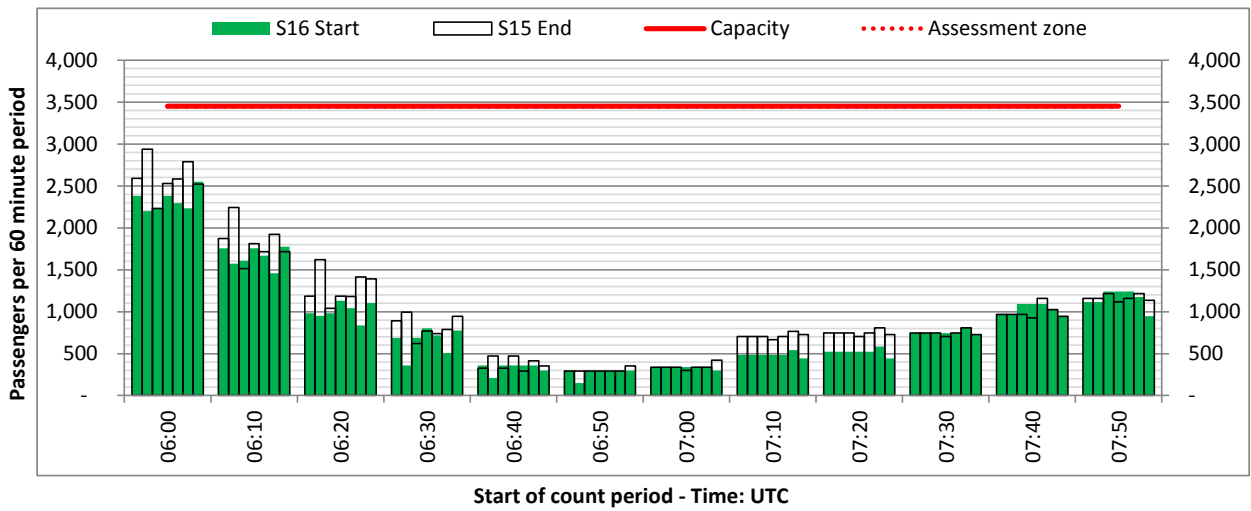
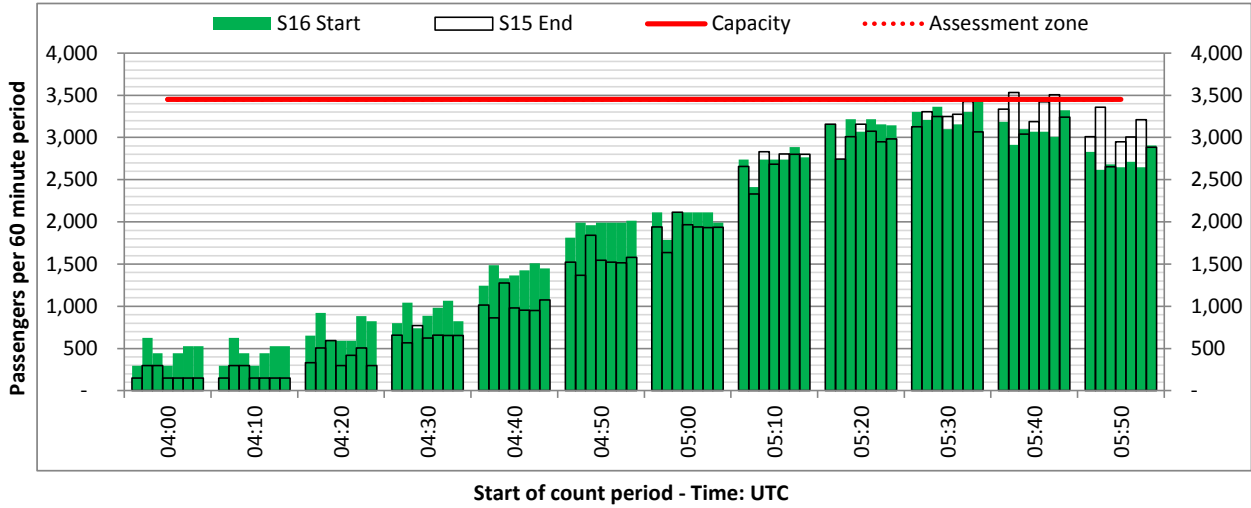
DEPARTURE - 60 minute count rolling every 10 mins (T60/10)



Terminals: 2

Operators: All Operators

Days: 1234567



# Peak Week - Passengers Histogram

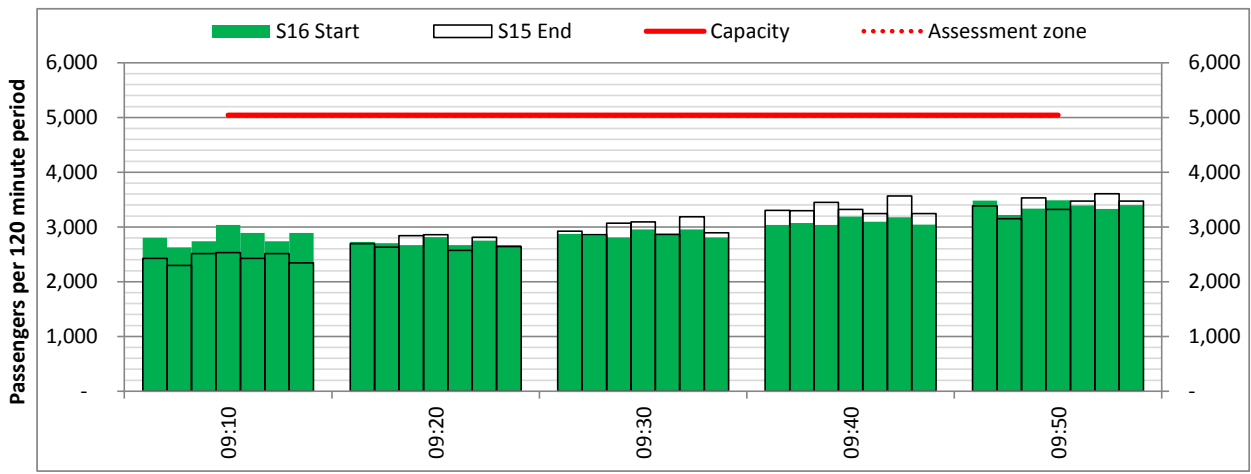
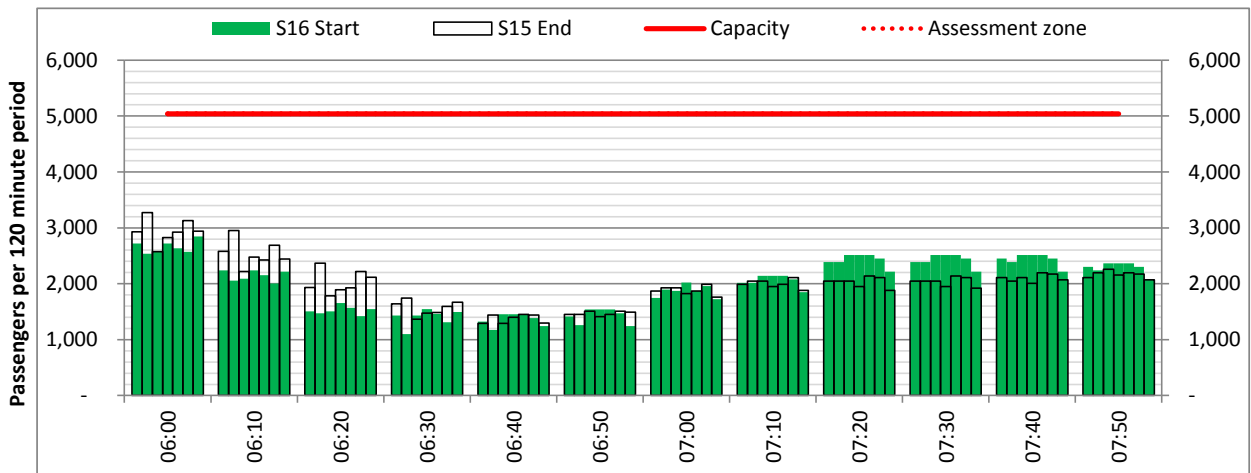
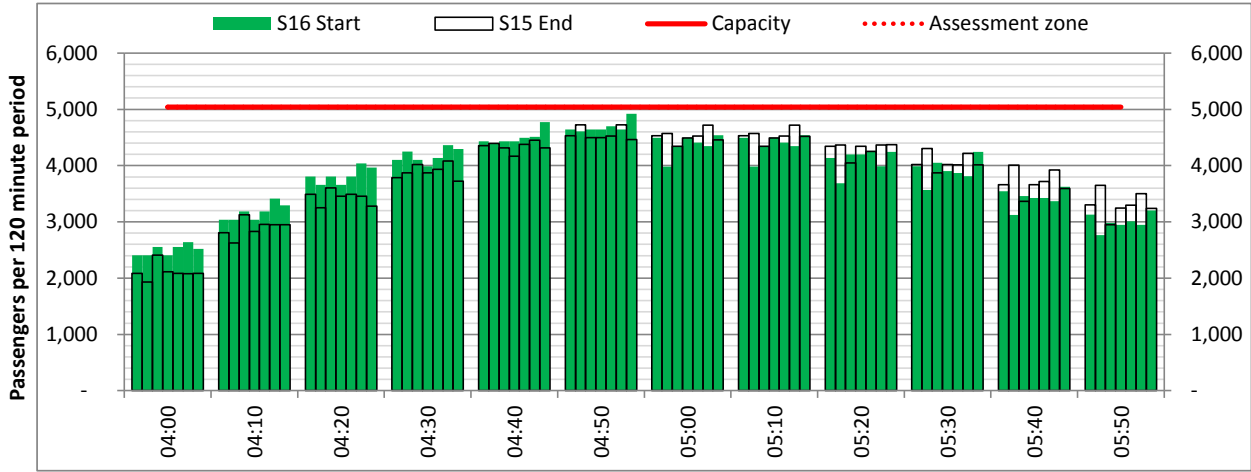
DEPARTURE - 120 minute count rolling every 10 mins (T120/10)



Terminals: 2

Operators: All Operators

Days: 1234567



# Peak Week - Passengers Histogram

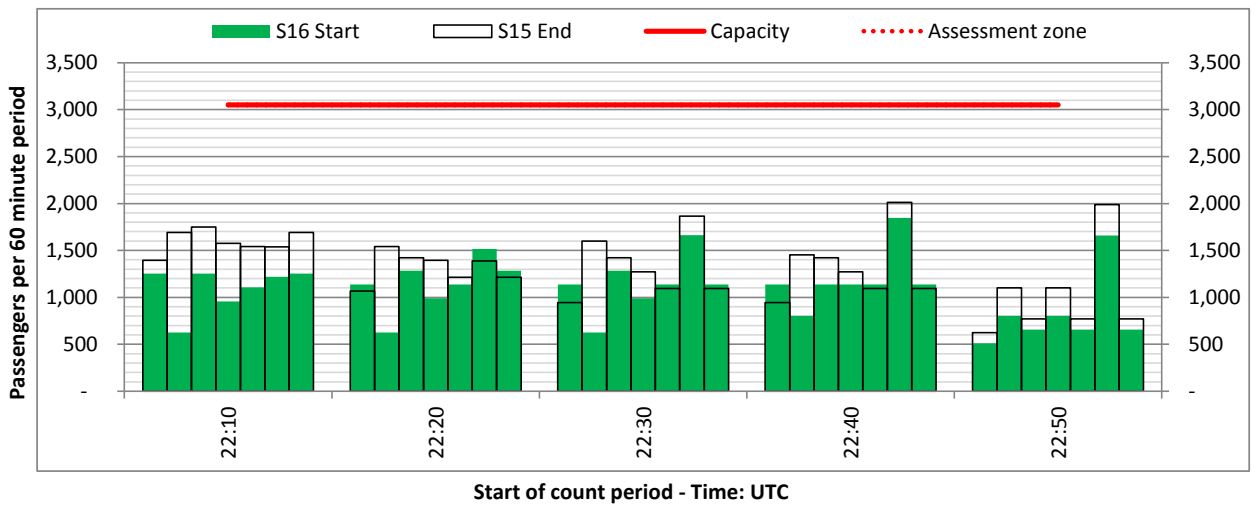
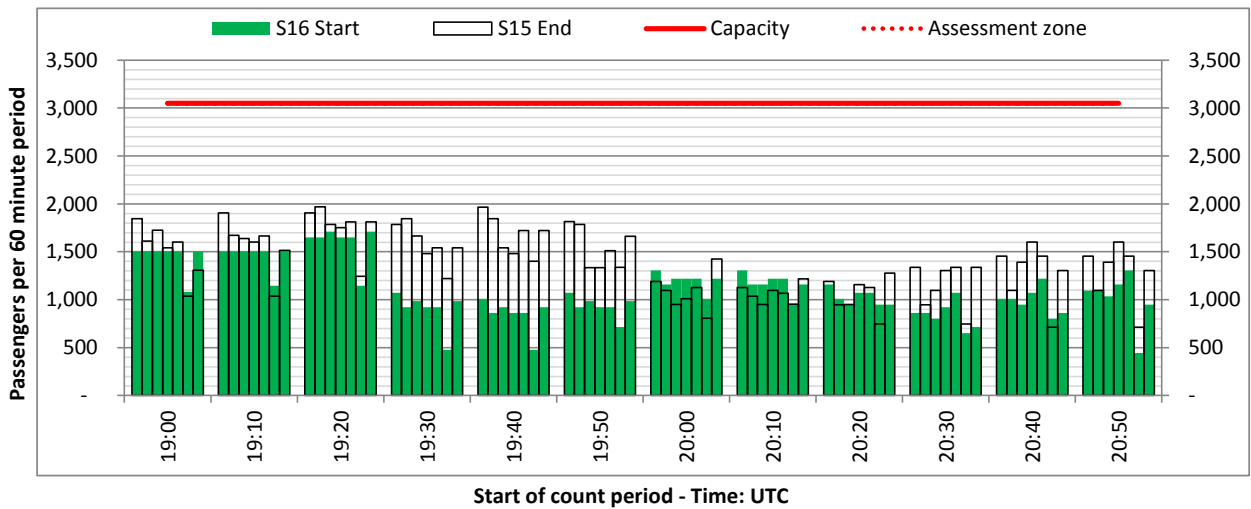
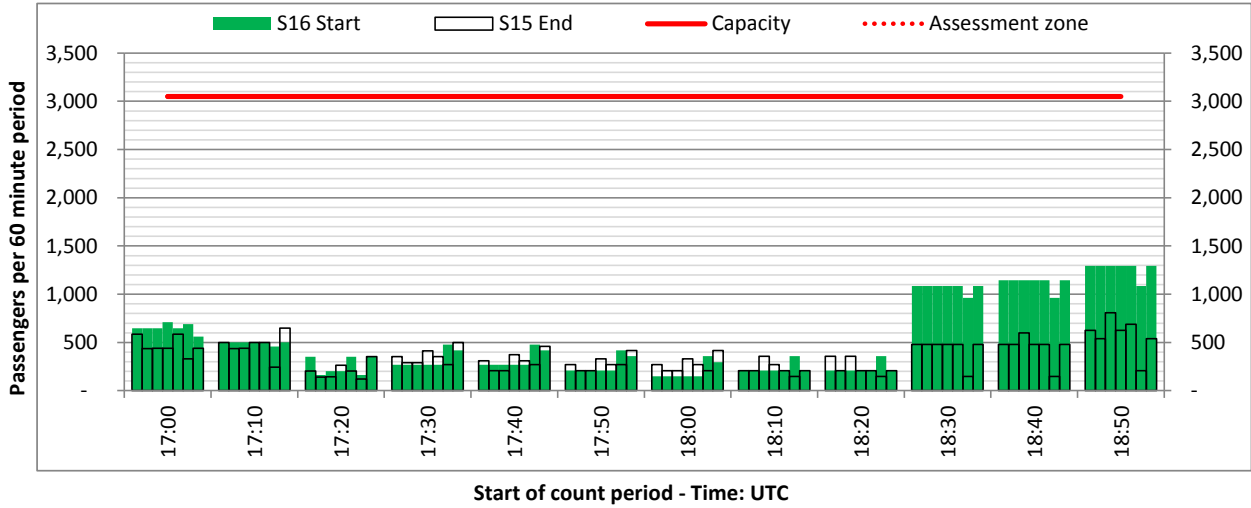
ARRIVAL - 60 minute count rolling every 10 mins (T60/10)



Terminals: 2

Operators: All Operators

Days: 1234567



# Peak Week - Passengers Histogram

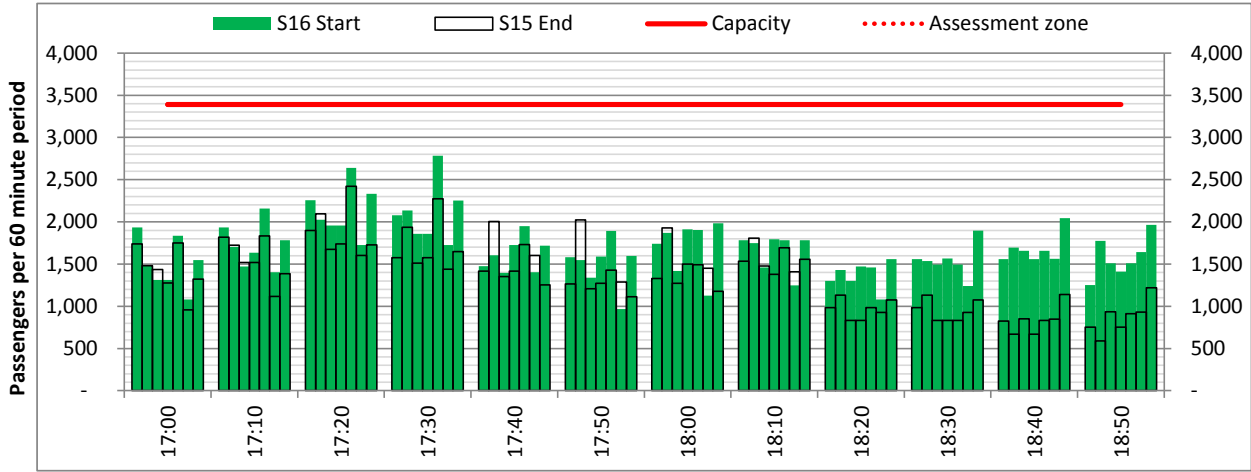
ARRIVAL - 60 minute count rolling every 10 mins (T60/10)



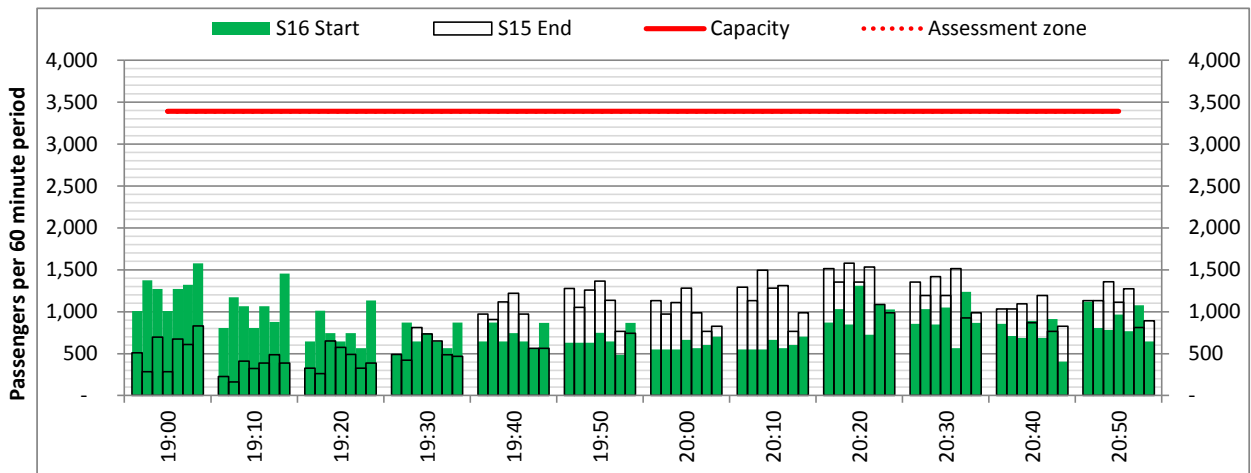
Terminals: 1

Operators: All Operators

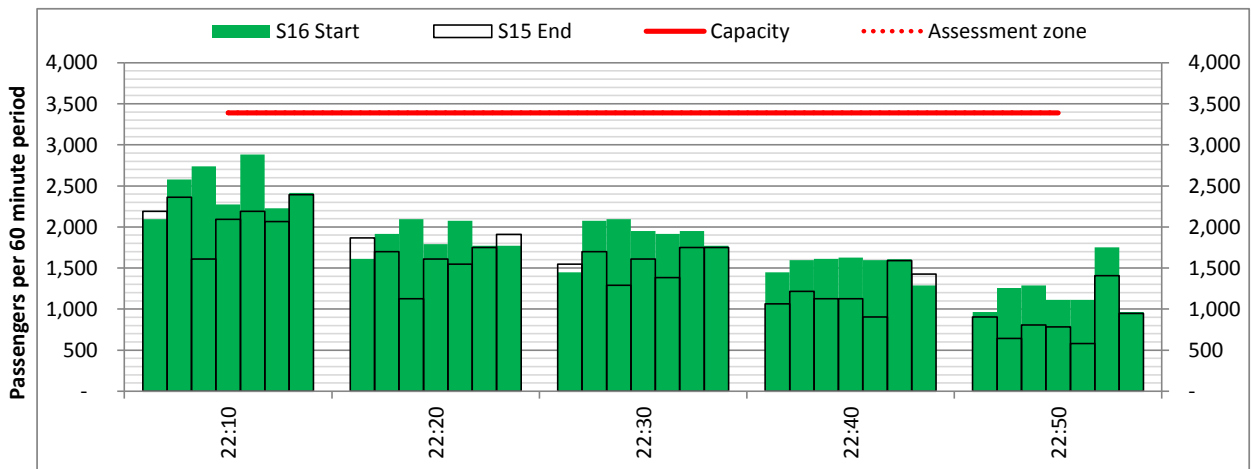
Days: 1234567



Start of count period - Time: UTC



Start of count period - Time: UTC



Start of count period - Time: UTC

# Peak Week - Passengers Histogram

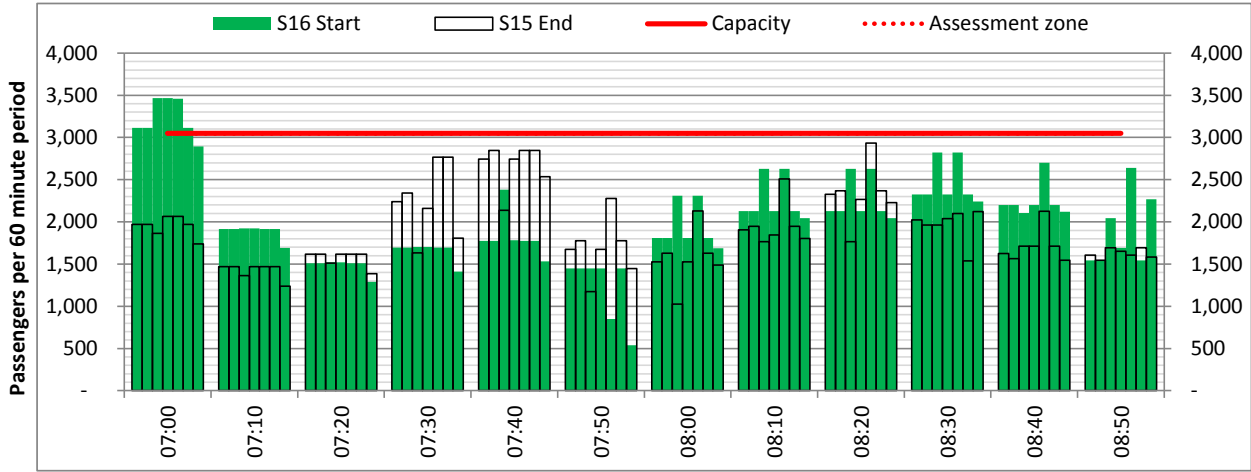
ARRIVAL - 60 minute count rolling every 10 mins (T60/10)



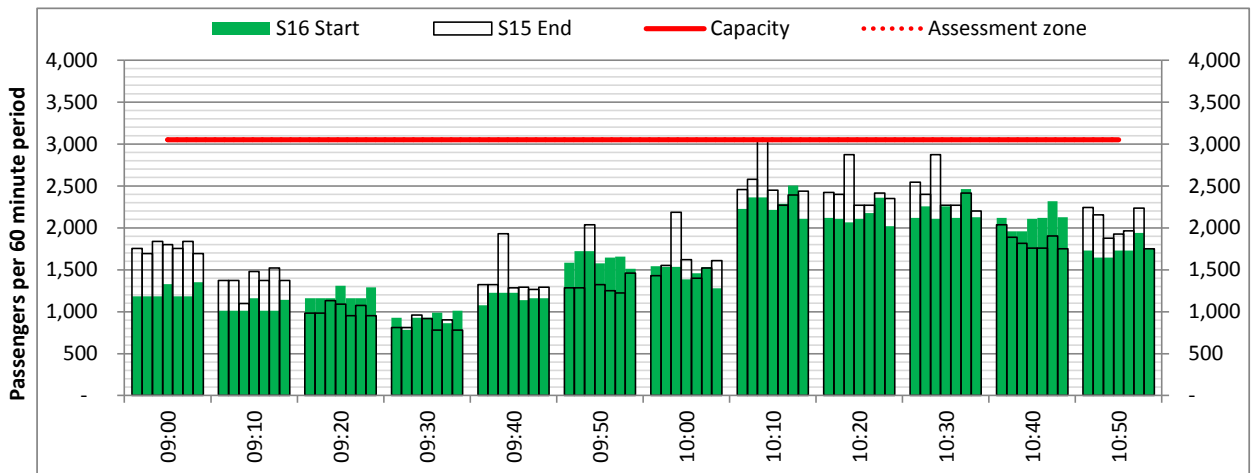
Terminals: 2

Operators: All Operators

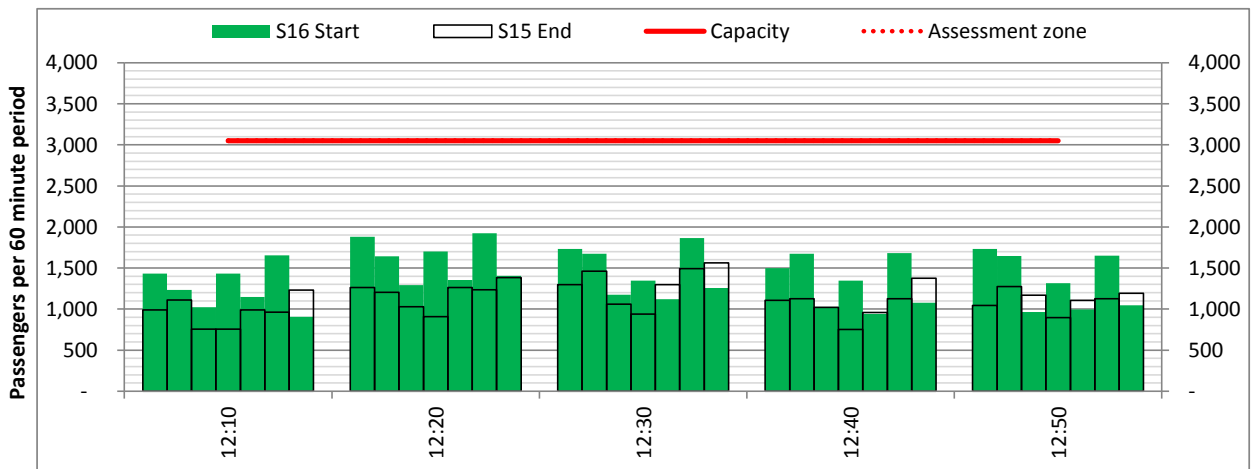
Days: 1234567



Start of count period - Time: UTC



Start of count period - Time: UTC



Start of count period - Time: UTC

<b>Air Transport Movement (ATM)</b>	Any aircraft movement which is either a scheduled or chartered passenger or cargo flight.
<b>Common Travel Area (CTA)</b>	Origin or Destination is in Republic of Ireland or the Channel Islands.
<b>Demand</b>	Unconstrained demand before any schedule adjustments have been made.
<b>"Fill-in"</b>	These are gaps in a historic series of slots which the carrier requests to "Fill-in" at Initial Submissions - Fill-ins will be recognisably part of the historic series and will have the same flight details to qualify as a "Fill-in".
<b>Hist (SHL)</b>	Snapshot of historic schedule rolled over from end of the previous equivalent season - as advised to airlines in the SHLs.
<b>ICAO Size A</b>	Aircraft with wingspan between 0.00m - 14.99m.
<b>ICAO Size B</b>	Aircraft with wingspan between 15.00m - 23.99m.
<b>ICAO Size C</b>	Aircraft with wingspan between 24.00m - 35.99m.
<b>ICAO Size D</b>	Aircraft with wingspan between 36.00m - 51.99m.
<b>ICAO Size E</b>	Aircraft with wingspan between 52.00m - 64.99m.
<b>ICAO Size F</b>	Aircraft with wingspan between 65.00m - 80.00m.
<b>Init Coord</b>	Snapshot of schedule immediately after Initial Coordination is completed - as advised to airlines in the SALs.
<b>Passenger Air Transport Movement (PATM)</b>	Any aircraft movement which is either a scheduled or chartered passenger flight.
<b>Start</b>	Snapshot of schedule shortly before the start of the scheduling season (exact date given below where used).
<b>Time: Local</b>	Times shown are in LOCAL time for the airport/scheduling season.
<b>Time: UTC</b>	Times shown are in Universal Time Constant (UTC).
<b>Data snapshot descriptions</b>	
<b>S15 Start</b>	S15 schedule as cleared on Wed 18-Mar-15.
<b>S15 End</b>	S15 schedule as cleared on Sun 25-Oct-15.
<b>S16 Start</b>	S16 schedule as cleared on Thu 17-Mar-16.
<b>Peak Week</b>	Peak week for S15 is Mon 29-Jun-15 to Sun 05-Jul-15. Peak week for S16 is Mon 11-Jul-16 to Sun 17-Jul-16.

**For ACL use**

	Airport-Season-Branch-Resource	From date	To date	Time
Full Season Rep 1	DUB-S15-SoS-Standard	Sun 29-Mar-2015	Sat 24-Oct-2015	UTC
Full Season Rep 2	DUB-S15-End-Standard	Sun 29-Mar-2015	Sat 24-Oct-2015	UTC
Full Season Rep 3	DUB-S16-SoS-Standard	Sun 27-Mar-2016	Sat 29-Oct-2016	UTC

	Airport-Season-Branch-Resource	From date	To date	Time
Peak Week Rep 1	DUB-S15-SoS-Standard	Mon 29-Jun-2015	Sun 05-Jul-2015	UTC
Peak Week Rep 2	DUB-S15-End-Standard	Mon 29-Jun-2015	Sun 05-Jul-2015	UTC
Peak Week Rep 3	DUB-S16-SoS-Standard	Mon 11-Jul-2016	Sun 17-Jul-2016	UTC