

AL MAKTOUM AIRPORT DWC

S15 Start of Season Report

Key Statistics	S15 Start	Change from S14 Start	Change from S14 End
Air Transport Movements	11,269	▼ -44.3%	▼ -33.8%
Air Transport Movements - Peak Week	386	▼ -16.3%	▼ -31.4%
Total Seats	534,960	▼ -72.2%	▼ -60.9%
Total Seats - Peak Week	19,308	▼ -22.5%	▲ 26.1%
Average Seats per Passenger ATM	156		

Contents	Page
CONSTRAINTS BY TERMINAL	2
CODE F AIRCRAFT ARRIVALS AND DEPARTURES	3
AIR TRANSPORT MOVEMENT STATISTICS	4
ATM STATISTICS - PEAK WEEK	5
SEATS AND SEATS PER MOVEMENT STATISTICS	6
SEAT STATISTICS - PEAK WEEK	7
DISTRIBUTION OF SCHEDULE ADJUSTMENTS	8
TOP 10 AIRLINES BY ATMS AND SEATS	9
TOP 20 DESTINATIONS BY ATMS AND SEATS	10
OPERATOR COMPARISON - PEAK WEEK FREQUENCIES	11-14
OPERATOR COMPARISON - FULL SEASON FREQUENCIES	15-22
RUNWAY MOVEMENT ALLOCATION - R60	23
RUNWAY MOVEMENT ALLOCATION - R10	24
TERMINAL 1 PEAK WEEK HISTOGRAMS	25
GLOSSARY	26

Data in this report is current as of 23 March 2015

No warranty whether expressed or implied as to the completeness, accuracy, fitness for purpose, or satisfactory quality is given by ACL regarding the information in this report, which is provided by third parties. Accordingly, ACL excludes all liability with regard to such data.

The contents of this report may not be reproduced without the written consent of ACL.

PRIMARY CONSTRAINTS BY TERMINAL - Full Season

Row Labels	AA	CLO	GRA	OK	R10	R60	Grand Total
Arrival	209	36	1	5357		31	5634
Departure		30	36	5299	30	240	5635
Total	209	66	37	10656	30	271	11269

Runway Reason Code	
R60	60 Min Runway Availability
R10	10 Min Runway Availability

Other Reason Code	
AA	Apron Capacity
CLO	Runway Maintenance
GRA	Arr Affected by Dep
GRD	Dep Affected by Arr

Row Labels	AA	CLO	GRA	OK	R10	R60	Grand Total
Arrival	4%	1%	0%	95%	0%	1%	100%
Departure	0%	1%	1%	94%	1%	4%	100%

Terminal Reason Code	
T60	0 Min Terminal Capacity rolling 30 Mir

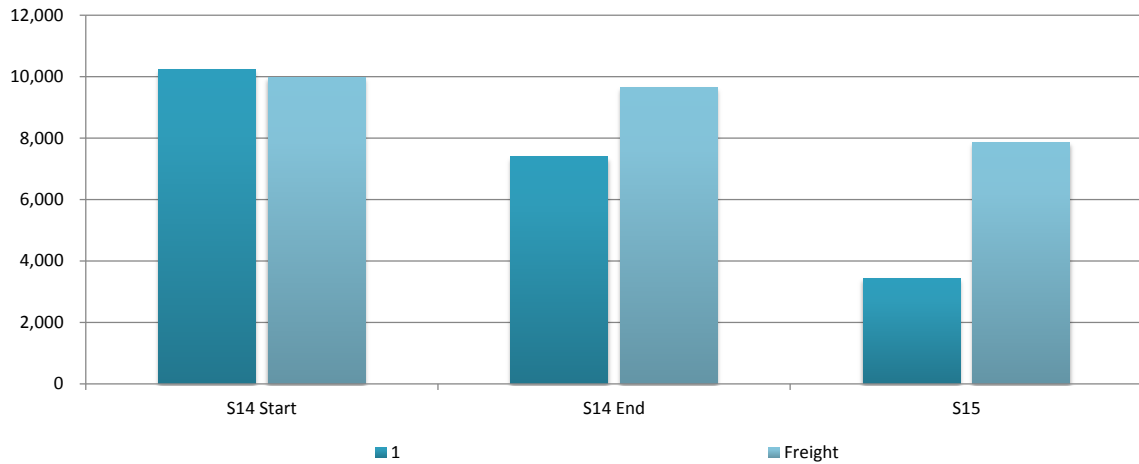
Terminal/ Reason Code Row Labels	TIME UTC																							Grand Total		
	0	100	200	300	400	500	600	700	800	900	1000	1100	1200	1300	1400	1500	1600	1700	1800	1900	2000	2100	2200		2300	
Terminal 1	1	211		12	186	313	128		90	96	5	83	84		210	342	240	213	784	211		1		211	3421	
AA																									209	209
CLO						6																				6
GRA	1						36																			37
OK		1		12	186	276	92		90	96	5	83	84		210	342	240	213	784	211		1		2		2928
R60		210				31																				241
Freight	241	442	267	328	383	411	837	414	411	295	509	209	300	93	122	241	176	330	206	179	115	239	380	720	7848	
CLO		30				30																				60
OK	241	412	267	328	353	381	807	414	411	295	509	209	300	93	122	241	176	330	206	179	115	239	380	720	7728	
R10							30																			30
R60					30																					30

CODE F ARRIVALS AND DEPARTURES

CODE F ARRIVALS/ Day of Week	TIME UTC																							Grand Total	
	0	100	200	300	400	500	600	700	800	900	1000	1100	1200	1300	1400	1500	1600	1700	1800	1900	2000	2100	2200		2300
A				30										30							2		3	30	95
Cargolux				30										30											60
3				30																					30
4														30											30
Cathay Pacific																					2		3	30	35
3																								30	30
4																					2				2
6																							3		3

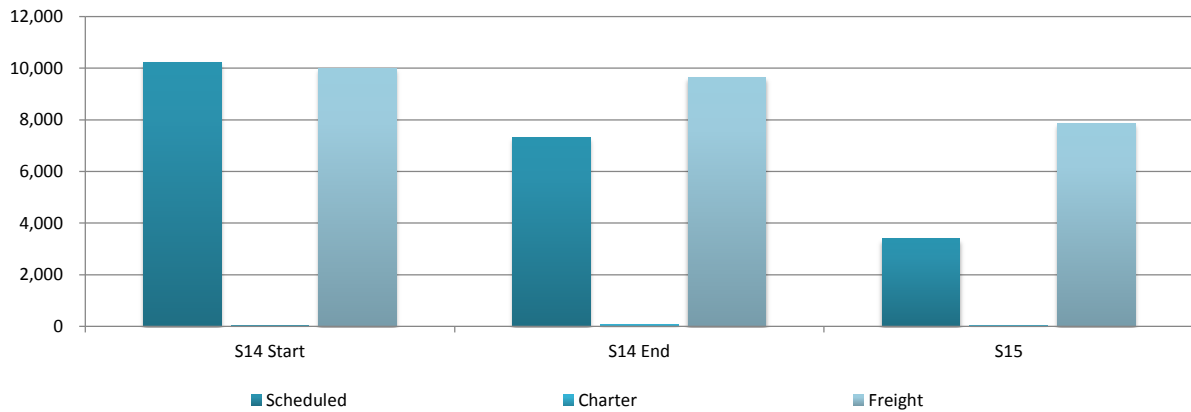
CODE F DEPARTURES/ Day of Week	TIME UTC																							Grand Total	
	0	100	200	300	400	500	600	700	800	900	1000	1100	1200	1300	1400	1500	1600	1700	1800	1900	2000	2100	2200		2300
D		30			30										30								2	3	95
Cargolux					30										30										60
3					30																				30
4															30										30
Cathay Pacific		30																					2	3	35
4		30																					2		32
6																								3	3
6														22											22

AIR TRANSPORT MOVEMENTS BY TERMINAL - Full Season



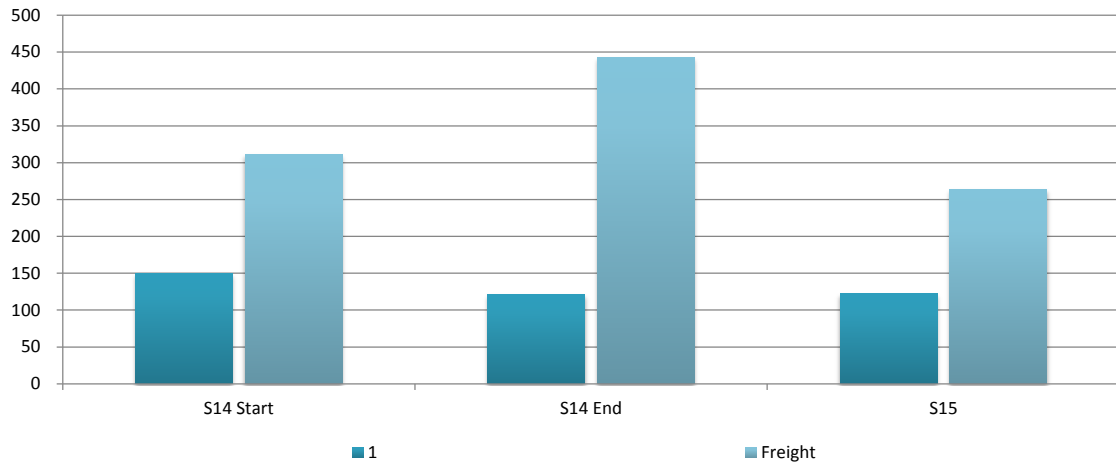
Terminal	S14 Start	S14 End	S15	% Change Start-Start	% Change End - Start
1	10,242	7,381	3,421	-66.6%	-53.7%
Freight	9,975	9,634	7,848	-21.3%	-18.5%
Total	20,217	17,015	11,269	-44.3%	-33.8%

AIR TRANSPORT MOVEMENTS BY SERVICE TYPES - Full Season



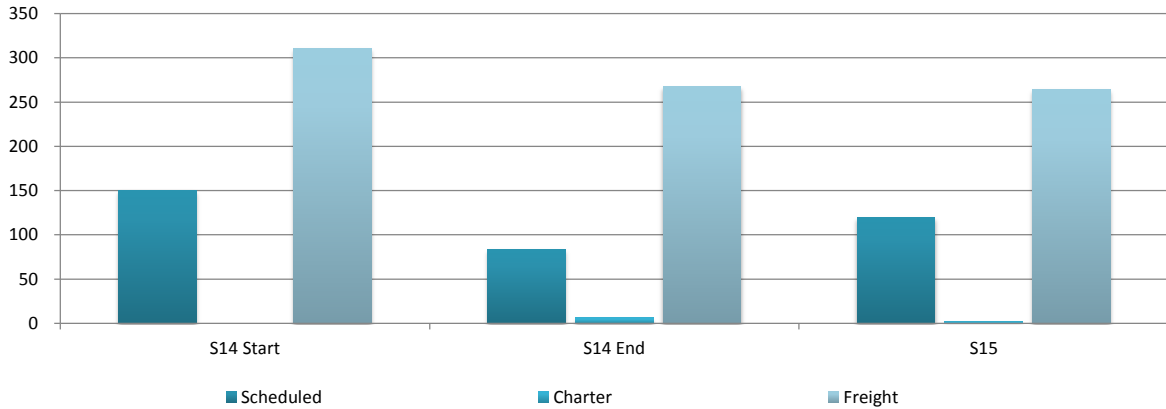
Service Type	S14 Start	S14 End	S15	% Change Start-Start	% Change End - Start
Scheduled	10,212	7,305	3,384	-66.9%	-53.7%
Charter	30	75	37	23.3%	-50.7%
Freight	9,975	9,635	7,848	-21.3%	-18.5%
Total	20,217	17,015	11,269	-44.3%	-33.8%

AIR TRANSPORT MOVEMENTS BY TERMINAL - Peak Week



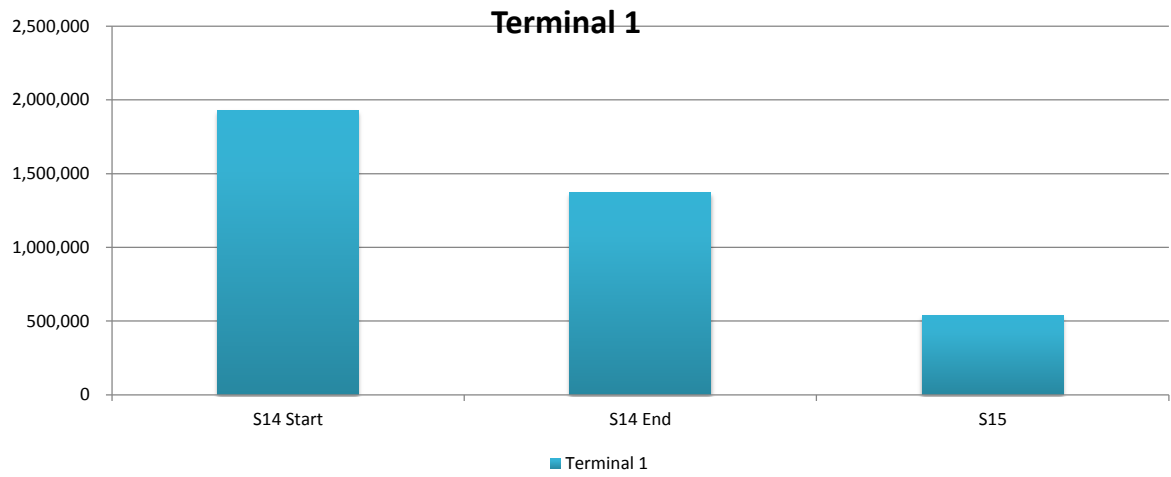
Terminal	S14 Start	S14 End	S15	% Change Start-Start	% Change End - Start
1	150	121	122	-18.7%	0.8%
Freight	311	442	264	-15.1%	-40.3%
Total	461	563	386	-16.3%	-31.4%

AIR TRANSPORT MOVEMENTS BY SERVICE TYPES - Peak Week



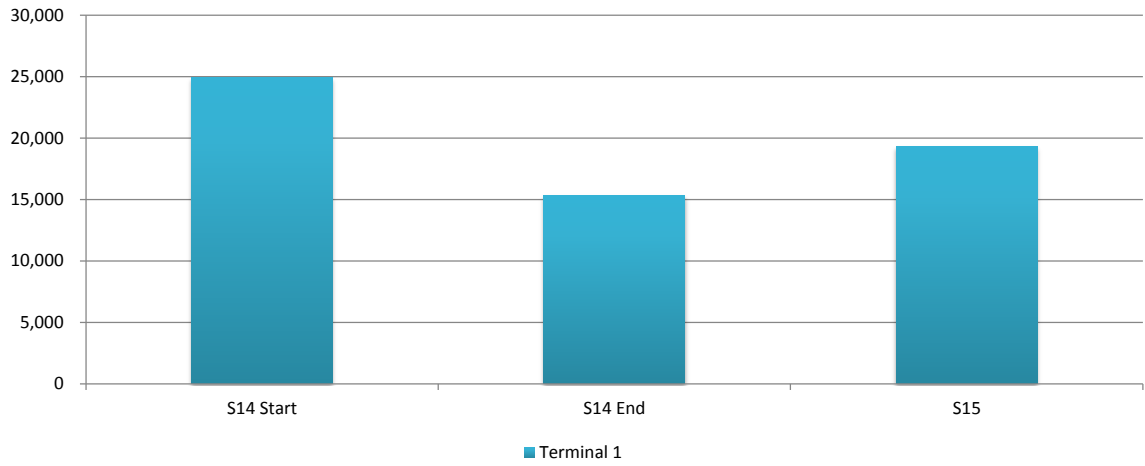
Service Type	S14 Start	S14 End	S15	% Change Start-Start	% Change End - Start
Scheduled	150	83	120	-20.0%	44.6%
Charter	-	6	2	-	-66.7%
Freight	311	268	264	-15.1%	-1.5%
Total	461	357	386	-16.3%	8.1%

TOTAL SEATS BY TERMINAL - Full Season



Row Labels	S14 Start	S14 End	S15	% Change Start-Start	% Change End - Start
Terminal 1	1,926,021	1,369,471	534,960	-72.2%	-60.9%
Total	1,926,021	1,369,471	534,960	-72.2%	-60.9%

TOTAL SEATS BY TERMINAL - Peak Week



Row Labels	S14 Start	S14 End	S15	% Change Start-Start	% Change End - Start
Terminal 1	24,908	15,317	19,308	-22.5%	26.1%
Total	24,908	15,317	19,308	-22.5%	26.1%

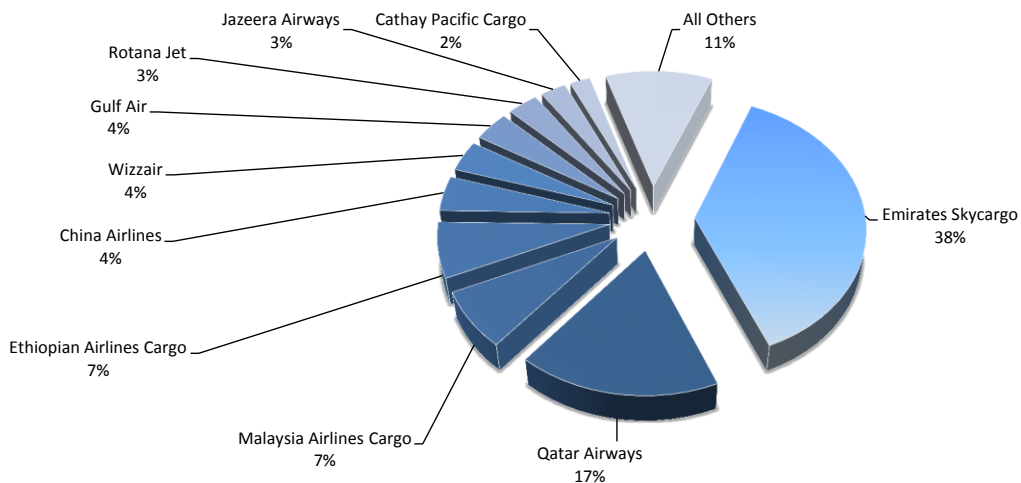
Schedule Adjustments by carrier

Carrier		Minutes off Slot								Grand Total
		5	20	35	40	45	60	60	60	
EK	Emirates Sky Cargo	4196	30					30		4256
QR	Qatar Airways	1501			209	209		60		1979
MH	Malaysian Airlines Cargo	824								824
ET	Ethiopian Airlines Cargo	780								780
CI	China Airlines	494								494
W6	Wizzair	432								432
GF	Gulf Air	420								420
RJD	Rotana Jet	360								360
J9	Jazeera Airways	300								300
CX	Cathay Pacific Cargo	230					1	1		232
MP	Martinair Cargo	182								182
IR	Iran Air	180								180
6Q	Cham Wings	164								164
HY	Uzbekistan Airways	150	30							180
TK	Turkish Airlines	120								120
EY	Etiihad Airways Cargo	120						60		180
CV	Cargolux	120								120
OR	Arkefly	21						13		34
AY	Finnair	10								10
JTG	Jet Time Airways	8								8
DE	Condor	4		2						6
NO	Neos Air	4								4
PF	Primera Air	2								2
X3	Tuifly							2		2
Grand Total		10622	60	2	209	209	1	92	74	11269

Carrier		Minutes off Slot								Grand Total
		Clear	5	10	30	50	55	60	60+	
EK	Emirates Sky Cargo	98.6%	0.7%						0.7%	100.0%
QR	Qatar Airways	75.8%			10.6%	10.6%			3.0%	100.0%
MH	Malaysian Airlines Cargo	100.0%								100.0%
ET	Ethiopian Airlines Cargo	100.0%								100.0%
CI	China Airlines	100.0%								100.0%
W6	Wizzair	100.0%								100.0%
GF	Gulf Air	100.0%								100.0%
RJD	Rotana Jet	100.0%								100.0%
J9	Jazeera Airways	100.0%								100.0%
CX	Cathay Pacific Cargo	99.1%					0.4%		0.4%	100.0%
MP	Martinair Cargo	100.0%								100.0%
IR	Iran Air	100.0%								100.0%
6Q	Cham Wings	100.0%								100.0%
HY	Uzbekistan Airways	83.3%	16.7%							100.0%
TK	Turkish Airlines	100.0%								100.0%
EY	Etihad Airways Cargo	66.7%							33.3%	100.0%
CV	Cargolux	100.0%								100.0%
OR	Arkefly	61.8%							38.2%	100.0%
AY	Finnair	100.0%								100.0%
JTG	Jet Time Airways	100.0%								100.0%
DE	Condor	66.7%		33.3%						100.0%
NO	Neos Air	100.0%								100.0%
PF	Primera Air	100.0%								100.0%
X3	Tuifly							100.0%		100.0%
Grand Total		94.3%	0.5%	0.0%	1.9%	1.9%	0.0%	0.8%	0.7%	100.0%

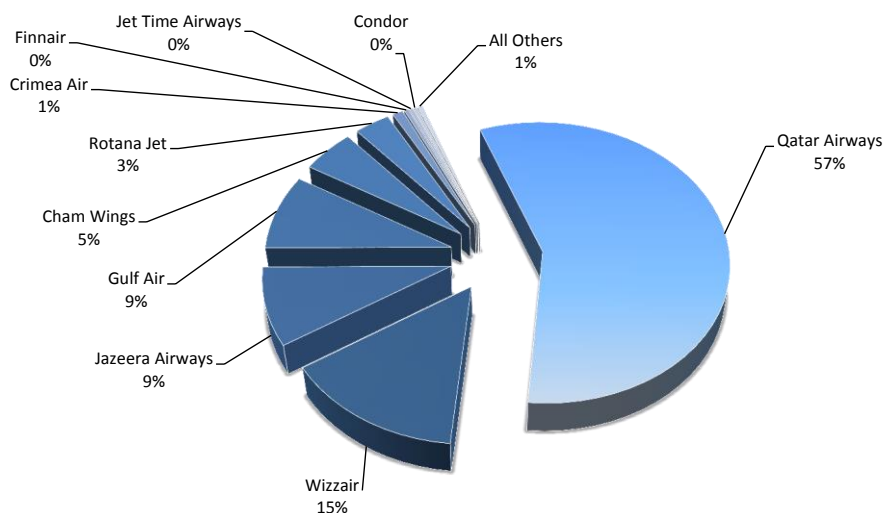
TOP 10 AIRLINES BY AIR TRANSPORT MOVEMENTS (ATMS)

Airline	Movements
Emirates Skycargo	4,256
Qatar Airways	1,979
Malaysia Airlines Cargo	824
Ethiopian Airlines Cargo	780
China Airlines	494
Wizzair	432
Gulf Air	420
Rotana Jet	360
Jazeera Airways	300
Cathay Pacific Cargo	238
All Others	1,250

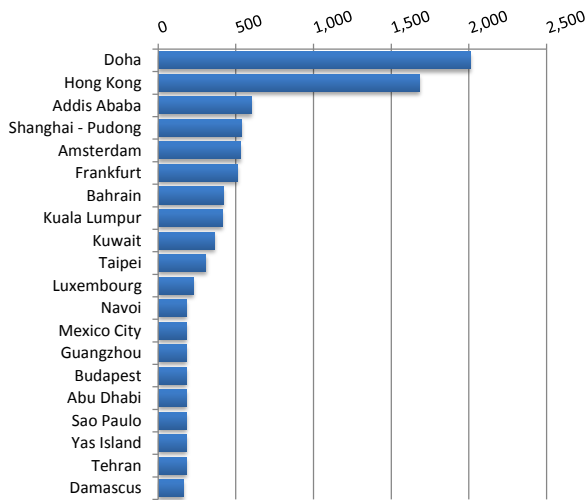


TOP 10 AIRLINES BY SEATS

Airline	Seats
Qatar Airways	305,578
Wizzair	77,760
Jazeera Airways	47,700
Gulf Air	46,200
Cham Wings	27,060
Rotana Jet	18,000
Crimea Air	5,307
Finnair	2,090
Jet Time Airways	1,776
Condor	1,650
All Others	2,655

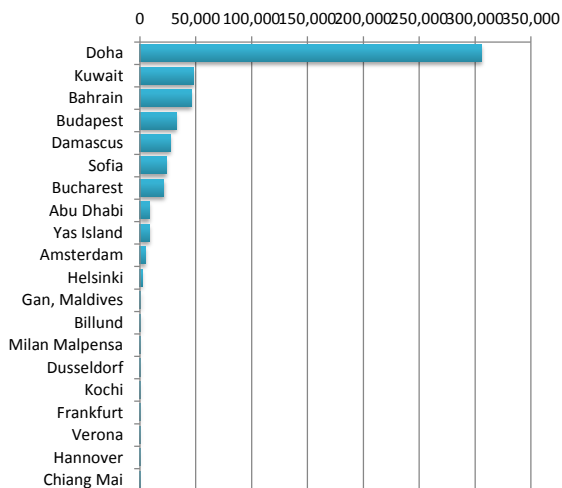


TOP 20 DESTINATIONS BY AIR TRANSPORT MOVEMENTS (ATMS)



Destination	ATM'S
Doha	2,009
Hong Kong	1,680
Addis Ababa	600
Shanghai - Pudong	539
Amsterdam	528
Frankfurt	508
Bahrain	421
Kuala Lumpur	412
Kuwait	362
Taipei	307
Luxembourg	225
Navoi	180
Mexico City	180
Guangzhou	180
Budapest	180
Abu Dhabi	180
Sao Paulo	180
Yas Island	180
Tehran	180
Damascus	164

TOP 20 DESTINATIONS BY SEATS



Destination	SEATS
Doha	305,578
Kuwait	47,719
Bahrain	46,205
Budapest	32,400
Damascus	27,060
Sofia	23,760
Bucharest	21,600
Abu Dhabi	9,000
Yas Island	9,000
Amsterdam	5,307
Helsinki	2,090
Gan, Maldives	953
Billund	888
Milan Malpensa	562
Dusseldorf	550
Kochi	550
Frankfurt	550
Verona	372
Hannover	286
Chiang Mai	215

DWC AL MAKTOUM AIRPORT

PEAK WEEK FREQUENCIES - BY CARRIER

	OPERATOR	AIRPORT		S14		S15		SEATS +/-	ATMS +/-
				SEATS	ATMS	SEATS	ATMS		
5Y	Atlas Air	AGT	Ciudad del Este	0	1	0	0	0	-1
		HKG	Hong Kong International	0	1	0	0	0	-1
5Y Total				0	2	0	0	0	-2
6Q	Cham Wings	DAM	Damascus International	0	0	990	6	990	6
6Q Total				0	0	990	6	990	6
AY	Finnair	HEL	Helsinki-Vantaa	0	0	418	2	418	2
AY Total				0	0	418	2	418	2
CI	China Airlines	AMS	Amsterdam-Schiphol	0	0	0	2	0	2
		FRA	Frankfurt International	0	0	0	1	0	1
		LUX	Luxembourg	0	0	0	6	0	6
		TPE	Taipei Chiang Kai Shek	0	0	0	9	0	9
CI Total				0	0	0	18	0	18
CV	Cargolux	HKG	Hong Kong International	0	2	0	2	0	0
		LUX	Luxembourg	0	2	0	2	0	0
CV Total				0	4	0	4	0	0
CX	Cathay Pacific	FRA	Frankfurt International	0	8	0	4	0	-4
		HKG	Hong Kong International	0	9	0	4	0	-5
		LHR	London Heathrow	0	1	0	0	0	-1
CX Total				0	18	0	8	0	-10
EA	East Horizon	KDH	Kandahar	1,036	7	0	0	-1,036	-7
EA Total				1,036	7	0	0	-1,036	-7
EE	Eastern Skyjets	OAI	Bagram Airport	1,036	7	0	0	-1,036	-7
EE Total				1,036	7	0	0	-1,036	-7
EK	Emirates SkyCargo	ABJ	Abidjan Felix Houphouet Boigny	0	2	0	0	0	-2
		ADD	Addis Ababa Bole	0	3	0	2	0	-1
		AMS	Amsterdam-Schiphol	0	4	0	2	0	-2
		ATL	Atlanta	0	0	0	4	0	4
		BAH	Bahrain International	0	1	0	0	0	-1
		BEY	Beirut International	0	5	0	0	0	-5
		BOM	Mumbai	0	2	0	2	0	0
		CAN	Guangzhou Baiyun	0	7	0	6	0	-1
		DAC	Hazrat Shahjalal International	0	1	0	2	0	1

DWC AL MAKTOUM AIRPORT

PEAK WEEK FREQUENCIES - BY CARRIER

OPERATOR	AIRPORT	S14		S15		SEATS +/-	ATMS +/-
		SEATS	ATMS	SEATS	ATMS		
DKR	Dakar Yoff	0	5	0	0	0	-5
DUS	Dusseldorf	0	1	0	0	0	-1
EBB	Entebbe	0	2	0	0	0	-2
EBL	Erbil International Airport	0	7	0	0	0	-7
EDL	Eldoret International Airport	0	3	0	0	0	-3
FRA	Frankfurt International	0	8	0	8	0	0
GOT	Gothenburg Landvetter	0	5	0	0	0	-5
HAN	Hanoi Noibai	0	2	0	2	0	0
HKG	Hong Kong International	0	52	0	41	0	-11
IAH	Houston	0	1	0	0	0	-1
ICN	Seoul Incheon International	0	2	0	2	0	0
IKA	Imam Khomeini - Tehran	0	2	0	0	0	-2
JNB	Johannesburg International	0	3	0	0	0	-3
KRT	Khartoum Civil	0	3	0	0	0	-3
LAX	Los Angeles International	0	2	0	2	0	0
LHR	London Heathrow	0	4	0	4	0	0
LLW	Lilongwe International	0	3	0	0	0	-3
LOS	Lagos Murtala Muhammed	0	3	0	3	0	0
MEX	Mexico City Juarez International	0	3	0	6	0	3
MXP	Milan Malpensa	0	0	0	2	0	2
NBO	Nairobi Jomo Kenyatta International	0	12	0	0	0	-12
ORD	Chicago O'Hare International	0	4	0	4	0	0
PVG	Shanghai Pu Dong	0	33	0	17	0	-16
SAH	Sana'A International	0	1	0	0	0	-1
SIN	Singapore Changi	0	1	0	0	0	-1
SYD	Sydney Kingsford Smith	0	5	0	0	0	-5
TPE	Taipei Chiang Kai Shek	0	2	0	2	0	0
TSN	Tianjin	0	0	0	2	0	2
TUN	Tunis Carthage	0	2	0	0	0	-2
VCP	Sao Paulo Viracopos	0	6	0	6	0	0
ZAZ	Zaragoza	0	7	0	3	0	-4
EK Total		0	184	0	104	0	-80

DWC AL MAKTOUM AIRPORT

PEAK WEEK FREQUENCIES - BY CARRIER

	OPERATOR	AIRPORT		S14		S15		SEATS +/-	ATMS +/-
				SEATS	ATMS	SEATS	ATMS		
ET	Ethiopian Airlines Cargo	ADD	Addis Ababa Bole	0	14	0	18	0	4
		HAN	Hanoi Noibai	0	0	0	2	0	2
		HKG	Hong Kong International	0	2	0	6	0	4
ET Total				0	16	0	26	0	10
EY	Etihad Airways	AMS	Amsterdam-Schiphol	0	1	0	0	0	-1
		DAC	Hazrat Shahjalal International	0	1	0	0	0	-1
		DOH	Doha	0	0	0	1	0	1
		HKG	Hong Kong International	0	2	0	0	0	-2
		JIB	Djibouti Ambouli	0	0	0	3	0	3
		KBL	Kabul Khwaja Rawash	0	1	0	0	0	-1
		KWI	Kuwait International	0	0	0	1	0	1
		PVG	Shanghai Pu Dong	0	1	0	1	0	0
EY Total				0	6	0	6	0	0
GF	Gulf Air Gsc	BAH	Bahrain International	4,352	32	1,540	14	-2,812	-18
GF Total				4,352	32	1,540	14	-2,812	-18
HY	Uzbekistan Airways	NVI	Navoiy Airport	0	4	0	6	0	2
HY Total				0	4	0	6	0	2
IR	Iran Air	IKA	Imam Khomeini - Tehran	0	6	0	6	0	0
IR Total				0	6	0	6	0	0
J9	Jazeera Airways	KWI	Kuwait International	1,272	8	1,590	10	318	2
J9 Total				1,272	8	1,590	10	318	2
KU	Kuwait Airways	KWI	Kuwait International	520	4	0	0	-520	-4
KU Total				520	4	0	0	-520	-4
MH	Malaysia Airlines	AMS	Amsterdam-Schiphol	0	1	0	10	0	9
		FRA	Frankfurt International	0	0	0	4	0	4
		KUL	Kuala Lumpur International	0	1	0	14	0	13
MH Total				0	2	0	28	0	26
MNB	Mng Cargo Airlines	IST	Istanbul Ataturk	0	8	0	0	0	-8
MNB Total				0	8	0	0	0	-8
MP	Martinair	AMS	Amsterdam-Schiphol	0	9	0	3	0	-6
		HKG	Hong Kong International	0	0	0	3	0	3
		SIN	Singapore Changi	0	1	0	0	0	-1

DWC AL MAKTOUM AIRPORT

PEAK WEEK FREQUENCIES - BY CARRIER

OPERATOR	AIRPORT	S14		S15		SEATS +/-	ATMS +/-		
		SEATS	ATMS	SEATS	ATMS				
MP Total		0	10	0	6	0	-4		
OR	Arkefly	AMS	Amsterdam-Schiphol	0	0	1,098	6	1,098	6
OR Total		0	0	1,098	6	1,098	6	6	
QR	Qatar Airways	DOH	Doha	10,192	66	10,192	66	0	0
QR Total		10,192	66	10,192	66	0	0	0	
QS	Travel Service Airlines/Smart Wings	PRG	Prague Ruzyne	2,268	12	0	0	-2,268	-12
QS Total		2,268	12	0	0	-2,268	-12	-12	
RJD	Rotana Jet Aviation	AUH	Abu Dhabi International	0	0	300	6	300	6
		XSB	St Malo	0	0	300	6	300	6
RJD Total		0	0	600	12	600	12	600	12
TK	Turkish Airlines	BOM	Mumbai	0	1	0	0	0	-1
		IST	Istanbul Ataturk	0	3	0	3	0	0
		KWI	Kuwait International	0	0	0	1	0	1
TK Total		0	4	0	4	0	0	0	0
TMA	Tma - Trans Mediterranean Airways	BEY	Beirut International	0	5	0	0	0	-5
		BOM	Mumbai	0	2	0	0	0	-2
		CGP	Chittagong Patenga	0	2	0	0	0	-2
		DOH	Doha	0	1	0	0	0	-1
		KWI	Kuwait International	0	2	0	0	0	-2
TMA Total		0	12	0	0	0	0	0	-12
UN	Transaero Airlines	DME	Moscow Domodedovo	632	4	0	0	-632	-4
UN Total		632	4	0	0	-632	-4	-4	
W6	Wizz Air	BUD	Budapest Ferihegy	1,440	8	1,080	6	-360	-2
		OTP	Bucharest Otopeni International	1,080	6	720	4	-360	-2
		SOF	Sofia Vrazhdebna	1,080	6	1,080	6	0	0
W6 Total		3,600	20	2,880	16	-720	-4	-4	

DWC AL MAKTOUM AIRPORT

SEASONAL ROUTE FREQUENCIES - BY CARRIER

	OPERATOR	AIRPORT		S14		S15		SEATS +/-	ATMS +/-
				SEATS	ATMS	SEATS	ATMS		
2P	Air Philippines	MNL	Manila	57,132	138	0	0	-57,132	-138
2P Total				57,132	138	0	0	-57,132	-138
3V	Tnt Airways	HKG	Hong Kong International	0	139	0	0	0	-139
		LGG	Liege Bierset	0	139	0	0	0	-139
3V Total				0	278	0	0	0	-278
4R	NT Air	DME	Moscow Domodedovo	2,820	12	0	0	-2,820	-12
4R Total				2,820	12	0	0	-2,820	-12
5J	Cebu Pacific Air	MNL	Manila	70,632	162	0	0	-70,632	-162
5J Total				70,632	162	0	0	-70,632	-162
5Y	Atlas Air	AGT		0	30	0	0	0	-30
		HKG	Hong Kong International	0	30	0	0	0	-30
5Y Total				0	60	0	0	0	-60
6Q	Cham Wings	DAM	Damascus International	0	0	27,060	164	27,060	164
6Q Total				0	0	27,060	164	27,060	164
7L	Silk Way Airlines	GYD	Baku Heydar Aliyev International Airport	0	10	0	0	0	-10
7L Total				0	10	0	0	0	-10
9W	Jet Airways India	BOM	Mumbai	11,856	72	0	0	-11,856	-72
		DEL	Delhi Indira Gandhi International	24,640	160	0	0	-24,640	-160
		IXE	Bajpe Airport, Mangalore	24,640	160	0	0	-24,640	-160
9W Total				61,136	392	0	0	-61,136	-392
AGA	Agair	KDH	Kandahar	0	47	0	0	0	-47
		SHJ	Sharjah	0	47	0	0	0	-47
AGA Total				0	94	0	0	0	-94
AY	Finnair	HEL	Helsinki-Vantaa	418	2	2,090	10	1,672	8
AY Total				418	2	2,090	10	1,672	8
BI	Royal Brunei Airlines	BWN	Bandar Seri Begawan Brunei International	20,320	80	0	0	-20,320	-80
		LHR	London Heathrow	20,320	80	0	0	-20,320	-80
BI Total				40,640	160	0	0	-40,640	-160
CI	China Airlines	AMS	Amsterdam-Schiphol	0	0	0	55	0	55
		FRA	Frankfurt International	0	0	0	27	0	27
		LUX	Luxembourg	0	0	0	165	0	165
		TPE	Taipei Chiang Kai Shek	0	0	0	247	0	247

DWC AL MAKTOUM AIRPORT

SEASONAL ROUTE FREQUENCIES - BY CARRIER

OPERATOR	AIRPORT	S14		S15		SEATS +/-	ATMS +/-
		SEATS	ATMS	SEATS	ATMS		
CI Total		0	0	0	494	0	494
CV	Cargolux						
	HKG Hong Kong International	0	60	0	60	0	0
	KHI Karachi Quaid-E-Azam International	0	1	0	0	0	-1
	LUX Luxembourg	0	61	0	60	0	-1
CV Total		0	122	0	120	0	-2
CX	Cathay Pacific						
	CDG Paris Ch. De Gaulle	0	1	0	0	0	-1
	FRA Frankfurt International	0	185	0	116	0	-69
	HKG Hong Kong International	0	215	0	115	0	-100
	LHR London Heathrow	0	28	0	0	0	-28
CX Total		0	429	0	231	0	-198
DE	Condor						
	COK Cochin	0	0	550	2	550	2
	DUS Dusseldorf	0	0	550	2	550	2
	FRA Frankfurt International	0	0	550	2	550	2
DE Total		0	0	1,650	6	1,650	6
EA	East Horizon Air						
	KDH Kandahar	31,080	210	0	0	-31,080	-210
EA Total		31,080	210	0	0	-31,080	-210
EE	Eastern Skyjets						
	OAI Bagram Airport	31,080	210	0	0	-31,080	-210
EE Total		31,080	210	0	0	-31,080	-210
EK	Emirates Sky Cargo						
	ABJ Abidjan Felix Houphouet Boigny	0	60	0	0	0	-60
	ADD Addis Ababa Bole	0	90	0	60	0	-30
	AMS Amsterdam-Schiphol	0	120	0	60	0	-60
	ATL Atlanta	0	0	0	120	0	120
	BAH Bahrain International	0	30	0	0	0	-30
	BEY Beirut International	0	150	0	0	0	-150
	BOM Mumbai	0	60	0	59	0	-1
	CAN Guangzhou Baiyun	0	210	0	180	0	-30
	DAC Hazrat Shahjalal International	0	30	0	60	0	30
	DKR Dakar Yoff	0	150	0	0	0	-150
	DUS Dusseldorf	0	30	0	0	0	-30
	DWC Al Maktoum International Airport	0	0	0	599	0	599
	EBB Entebbe	0	60	0	0	0	-60
	EBL Erbil International Airport	0	210	0	0	0	-210

DWC AL MAKTOUM AIRPORT

SEASONAL ROUTE FREQUENCIES - BY CARRIER

OPERATOR	AIRPORT	S14		S15		SEATS +/-	ATMS +/-		
		SEATS	ATMS	SEATS	ATMS				
	EDL Eldoret International Airport	0	90	0	0	0	-90		
	FRA Frankfurt International	0	240	0	240	0	0		
	GOT Gothenburg Landvetter	0	150	0	0	0	-150		
	HAN Hanoi Noibai	0	60	0	60	0	0		
	HKG Hong Kong International	0	1,560	0	1,230	0	-330		
	IAH Houston	0	30	0	0	0	-30		
	ICN Seoul Incheon International	0	60	0	60	0	0		
	IKA Imam Khomeini - Tehran	0	60	0	0	0	-60		
	JNB Johannesburg International	0	90	0	0	0	-90		
	KRT Khartoum Civil	0	90	0	0	0	-90		
	LAX Los Angeles International	0	60	0	60	0	0		
	LHR London Heathrow	0	120	0	120	0	0		
	LLW Lilongwe International	0	90	0	0	0	-90		
	LOS Lagos Murtala Muhammed	0	90	0	90	0	0		
	MEX Mexico City Juarez International	0	90	0	180	0	90		
	MXP Milan Malpensa	0	0	0	60	0	60		
	NBO Nairobi Jomo Kenyatta International	0	360	0	0	0	-360		
	ORD Chicago O'Hare International	0	120	0	120	0	0		
	PVG Shanghai Pu Dong	0	989	0	509	0	-480		
	SAH Sana'A International	0	30	0	0	0	-30		
	SIN Singapore Changi	0	30	0	0	0	-30		
	SYD Sydney Kingsford Smith	0	150	0	0	0	-150		
	TPE Taipei Chiang Kai Shek	0	60	0	60	0	0		
	TSN Tianjin	0	0	0	60	0	60		
	TUN Tunis Carthage	0	60	0	0	0	-60		
	VCP Sao Paulo Viracopos	0	180	0	180	0	0		
	ZAZ Zaragoza	0	210	0	89	0	-121		
EK Total		0	6,269	0	4,256	0	-2,013		
ELN	HEA Herat Airfield	0	1	0	0	0	-1		
	OAZ Camp Bastion	0	1	0	0	0	-1		
ELN Total		0	2	0	0	0	-2		
ET	Ethiopian Airlines Cargo	ADD	Addis Ababa Bole	0	420	0	540	0	120

DWC AL MAKTOUM AIRPORT

SEASONAL ROUTE FREQUENCIES - BY CARRIER

OPERATOR	AIRPORT	S14		S15		SEATS +/-	ATMS +/-
		SEATS	ATMS	SEATS	ATMS		
	HAN Hanoi Noibai	0	0	0	60	0	60
	HKG Hong Kong International	0	60	0	180	0	120
ET Total		0	480	0	780	0	300
EY	Etihad Airways Cargo						
	AMS Amsterdam-Schiphol	0	30	0	0	0	-30
	DAC Hazrat Shahjalal International	0	30	0	0	0	-30
	DOH Doha	0	0	0	30	0	30
	HKG Hong Kong International	0	60	0	0	0	-60
	JIB Djibouti Ambouli	0	0	0	90	0	90
	KBL Kabul Khwaja Rawash	0	30	0	0	0	-30
	KWI Kuwait International	0	0	0	30	0	30
	PVG Shanghai Pu Dong	0	30	0	30	0	0
EY Total		0	180	0	180	0	0
FX	Fedex						
	BLR Bangalore Hindustan	0	48	0	0	0	-48
	CAN Guangzhou Baiyun	0	82	0	0	0	-82
	CDG Paris Ch. De Gaulle	0	24	0	0	0	-24
	DXB Dubai	0	12	0	0	0	-12
	HKG Hong Kong International	0	12	0	0	0	-12
	MEM Memphis International	0	104	0	0	0	-104
	NRT Tokyo Narita	0	34	0	0	0	-34
FX Total		0	316	0	0	0	-316
FZ	Flydubai						
	ADD Addis Ababa Bole	22,491	119	0	0	-22,491	-119
	AMD Ahmedabad	4,347	23	0	0	-4,347	-23
	AMM Amman	19,278	102	0	0	-19,278	-102
	BAH Bahrain International	29,484	156	0	0	-29,484	-156
	BEY Beirut International	74,844	396	0	0	-74,844	-396
	CGP Chittagong Patenga	28,917	153	0	0	-28,917	-153
	CMB Colombo Bandaranayake International	30,429	161	0	0	-30,429	-161
	DMM Dammam King Fahad International	25,326	134	0	0	-25,326	-134
	DOH Doha	120,015	635	0	0	-120,015	-635
	HRI	15,309	81	0	0	-15,309	-81
	IEV Kiev	30,618	162	0	0	-30,618	-162
	JED Jeddah King Abdulaziz International	30,618	162	0	0	-30,618	-162

DWC AL MAKTOUM AIRPORT

SEASONAL ROUTE FREQUENCIES - BY CARRIER

OPERATOR	AIRPORT	S14		S15		SEATS +/-	ATMS +/-		
		SEATS	ATMS	SEATS	ATMS				
	KBL Kabul Khwaja Rawash	27,216	144	0	0	-27,216	-144		
	KDH Kandahar	10,962	58	0	0	-10,962	-58		
	KIV Chisinau	8,316	44	0	0	-8,316	-44		
	KRT Khartoum Civil	13,608	72	0	0	-13,608	-72		
	KTM Kathmandu Tribhuvan	40,257	213	0	0	-40,257	-213		
	KUF Samara	15,687	83	0	0	-15,687	-83		
	KWI Kuwait International	91,287	483	0	0	-91,287	-483		
	KZN Kazan	21,735	115	0	0	-21,735	-115		
	MCT Muscat Seeb	30,618	162	0	0	-30,618	-162		
	MLE Male International	35,154	186	0	0	-35,154	-186		
	OAI Bagram Airport	30,618	162	0	0	-30,618	-162		
	OAZ Camp Bastion	19,278	102	0	0	-19,278	-102		
	ODS Odessa Central	8,694	46	0	0	-8,694	-46		
	RUH Riyadh King Khaled International	33,453	177	0	0	-33,453	-177		
	SAW Sabiha Gokcen International Airport	4,536	24	0	0	-4,536	-24		
	SKP Skopje	8,694	46	0	0	-8,694	-46		
	SVX Ekaterinburg	27,972	148	0	0	-27,972	-148		
	UFA Ufa, Bashkortostan	12,852	68	0	0	-12,852	-68		
FZ Total		872,613	4,617	0	0	-872,613	-4,617		
GF	Gulf Air Gsc	BAH	Bahrain International	130,016	956	46,200	420	-83,816	-536
GF Total				130,016	956	46,200	420	-83,816	-536
HY	Uzbekistan Airways	NVI	Navoiy Airport	0	118	0	180	0	62
HY Total				0	118	0	180	0	62
IR	Iran Air	IKA	Imam Khomeini - Tehran	0	180	0	180	0	0
IR Total				0	180	0	180	0	0
IY	Yemenia Yemen Airways	CGK	Jakarta Soekarno-Hatta International	6,648	24	0	0	-6,648	-24
		KUL	Kuala Lumpur International	6,648	24	0	0	-6,648	-24
		SAH	Sana'A International	13,296	48	0	0	-13,296	-48
IY Total				26,592	96	0	0	-26,592	-96
J9	Jazeera Airways	KWI	Kuwait International	59,784	376	47,700	300	-12,084	-76
J9 Total				59,784	376	47,700	300	-12,084	-76
JTG	Jet Time Airways	BLL	Billund	0	0	444	3	444	3

DWC AL MAKTOUM AIRPORT

SEASONAL ROUTE FREQUENCIES - BY CARRIER

OPERATOR	AIRPORT	S14		S15		SEATS +/-	ATMS +/-
		SEATS	ATMS	SEATS	ATMS		
	GAN Gan Island Gan Seenu	0	0	444	3	444	3
JTG Total		0	0	888	6	888	6
K4	Kalitta Air	AMS	Amsterdam-Schiphol	0	1	0	-1
		KDH	Kandahar	0	2	0	-2
		OAI	Bagram Airport	0	3	0	-3
K4 Total				0	6	0	-6
KU	Kuwait Airways	KWI	Kuwait International	8,580	66	0	-66
KU Total				8,580	66	0	-66
LC	EC Air	BZV	Brazzaville Maya Maya	10,360	70	0	-70
LC Total				10,360	70	0	-70
MH	Malaysia Airlines	AMS	Amsterdam-Schiphol	0	40	0	252
		FRA	Frankfurt International	0	0	0	120
		KUL	Kuala Lumpur International	45,846	202	0	210
MH Total				45,846	242	0	582
MNB	Mng Cargo Airlines	IST	Istanbul Ataturk	0	240	0	-240
MNB Total				0	240	0	-240
MP	Martinair	AMS	Amsterdam-Schiphol	0	272	0	-181
		HKG	Hong Kong International	0	1	0	89
		SIN	Singapore Changi	0	30	0	-29
MP Total				0	303	0	-121
NCR	National Air Cargo	HKG	Hong Kong International	0	1	0	-1
NCR Total				0	1	0	-1
NO	Neos	MXP	Milan Malpensa	0	0	562	2
		VRN	Verona	0	0	372	2
NO Total				0	0	934	4
OR	Arkefly	AMS	Amsterdam-Schiphol	0	0	5,307	29
OR Total				0	0	5,307	29
PF	Primera Air	ARN	Stockholm Arlanda	189	1	0	-1
		GOT	Gothenburg Landvetter	189	1	189	0
PF Total				378	2	189	-1
PS	Ukraine International Airlines	KBP	Kiev Borispol	360	2	0	-2
PS Total				360	2	0	-2

DWC AL MAKTOUM AIRPORT

SEASONAL ROUTE FREQUENCIES - BY CARRIER

	OPERATOR	AIRPORT		S14		S15		SEATS +/-	ATMS +/-
				SEATS	ATMS	SEATS	ATMS		
QR	Qatar Airways	DOH	Doha	323,596	2,076	305,578	1,979	-18,018	-97
QR Total				323,596	2,076	305,578	1,979	-18,018	-97
QS	Travel Service Airlines/Smart Wings	PRG	Prague Ruzyne	10,962	58	0	0	-10,962	-58
QS Total				10,962	58	0	0	-10,962	-58
RG	Rotana Jet Aviation	AZI	Abu Dhabi Bateen	170	2	0	0	-170	-2
		BSR	Basra International	50	1	0	0	-50	-1
		XSB	Yas Island	120	1	9,000	180	8,880	179
		AUH	Abu Dhabi International	0	0	9,000	180	9,000	180
RJD Total				340	4	18,000	360	17,660	356
TK	Turkish Airlines	BOM	Mumbai	0	24	0	0	0	-24
		IST	Istanbul Ataturk	0	84	0	90	0	6
		KWI	Kuwait International	0	0	0	30	0	30
TK Total				0	108	0	120	0	12
TMA	Tma - Trans Mediterranean Airways	BEY	Beirut International	0	149	0	0	0	-149
		BOM	Mumbai	0	59	0	0	0	-59
		CGP	Chittagong Patenga	0	60	0	0	0	-60
		DOH	Doha	0	30	0	0	0	-30
		KWI	Kuwait International	0	60	0	0	0	-60
TMA Total				0	358	0	0	0	-358
U6	Ural Airlines	CEK	Chelyabinsk	880	4	0	0	-880	-4
		DME	Moscow Domodedovo	3,080	14	0	0	-3,080	-14
		GOJ	Nizhniy Novgorod	880	4	0	0	-880	-4
		KUF	Samara	880	4	0	0	-880	-4
		MRV	Mineralnye Vody	880	4	0	0	-880	-4
		PEE	Perm	880	4	0	0	-880	-4
		SVX	Ekaterinburg	5,600	32	0	0	-5,600	-32
U6 Total				13,080	66	0	0	-13,080	-66
UN	Transaero Airlines	DME	Moscow Domodedovo	9,900	46	0	0	-9,900	-46
		KUF	Samara	948	6	0	0	-948	-6
		LED	St Petersburg	632	4	0	0	-632	-4
		OMS	Omsk	948	6	0	0	-948	-6
		OVB	Novosibirsk Tolmachevo	1,264	8	0	0	-1,264	-8

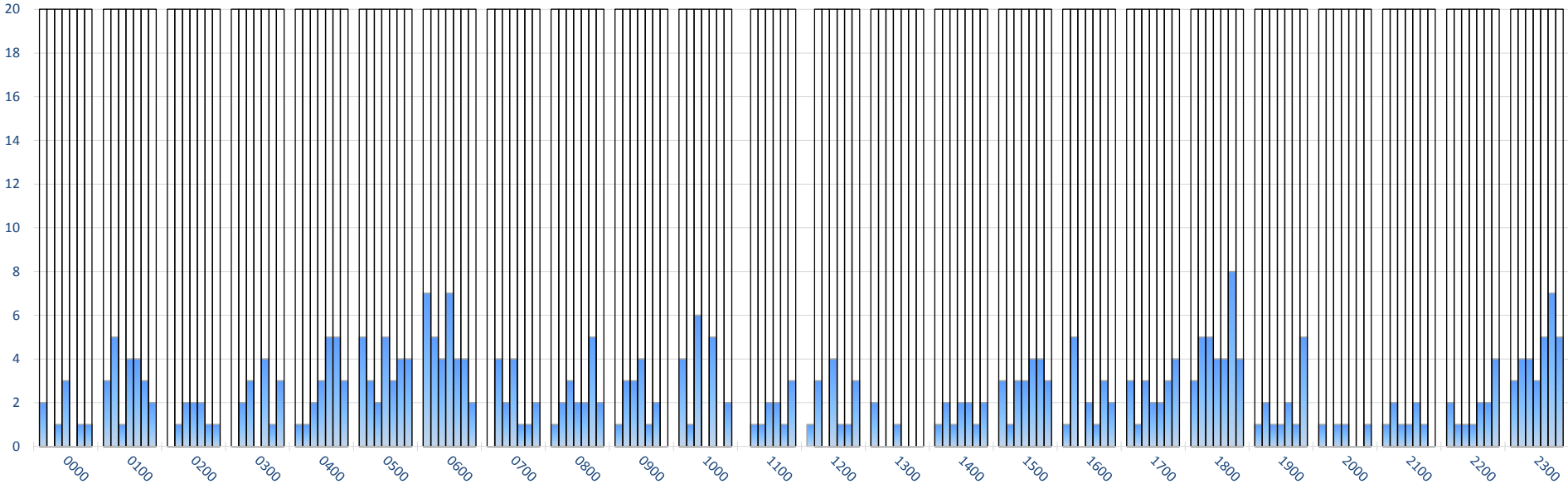
DWC AL MAKTOUM AIRPORT

SEASONAL ROUTE FREQUENCIES - BY CARRIER

OPERATOR		AIRPORT		S14		S15		SEATS +/-	ATMS +/-
				SEATS	ATMS	SEATS	ATMS		
		SVX	Ekaterinburg	948	6	0	0	-948	-6
		TJM	Tyumen	790	5	0	0	-790	-5
		VKO	Moscow Vnukovo	5,126	20	0	0	-5,126	-20
UN Total				20,556	101	0	0	-20,556	-101
URS	Silk Road Cargo Business	TAS	Tashkent Vostochny	0	2	0	1	0	-1
URS Total				0	2	0	1	0	-1
VDA	Volga Dnepr Airlines	KDH	Kandahar	0	1	0	0	0	-1
VDA Total				0	1	0	0	0	-1
W6	Wizz Air	BUD	Budapest Ferihegy	43,200	240	32,400	180	-10,800	-60
		OTP	Bucharest Otopeni International	32,400	180	21,600	120	-10,800	-60
		SOF	Sofia Vrazhdebna	32,400	180	23,760	132	-8,640	-48
W6 Total				108,000	600	77,760	432	-30,240	-168
X3	Baikal Airlines	HAI	Hanover	0	0	286	2	286	2
X3 Total				0	0	286	2	286	2

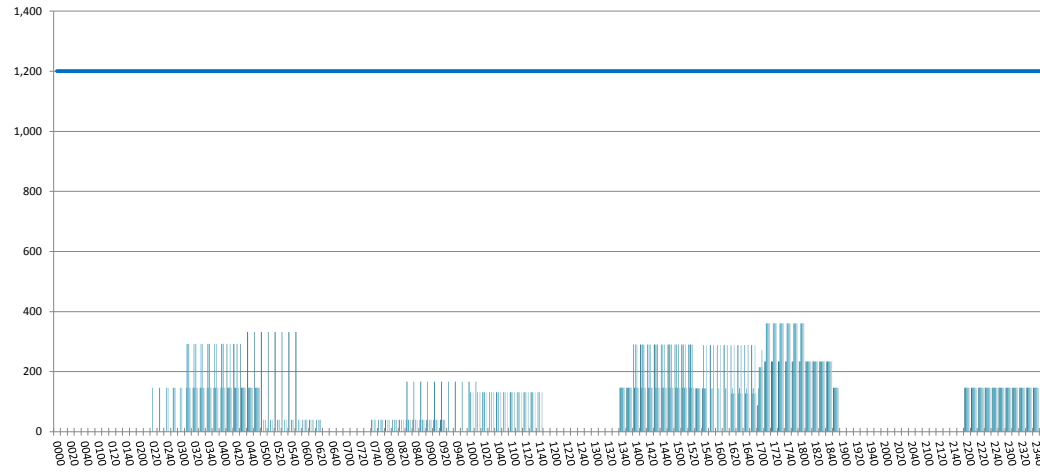
RUNWAY MOVEMENT ALLOCATION (R60) PEAK WEEK TOTALS

Peak Week Movements per Hour - All times UTC



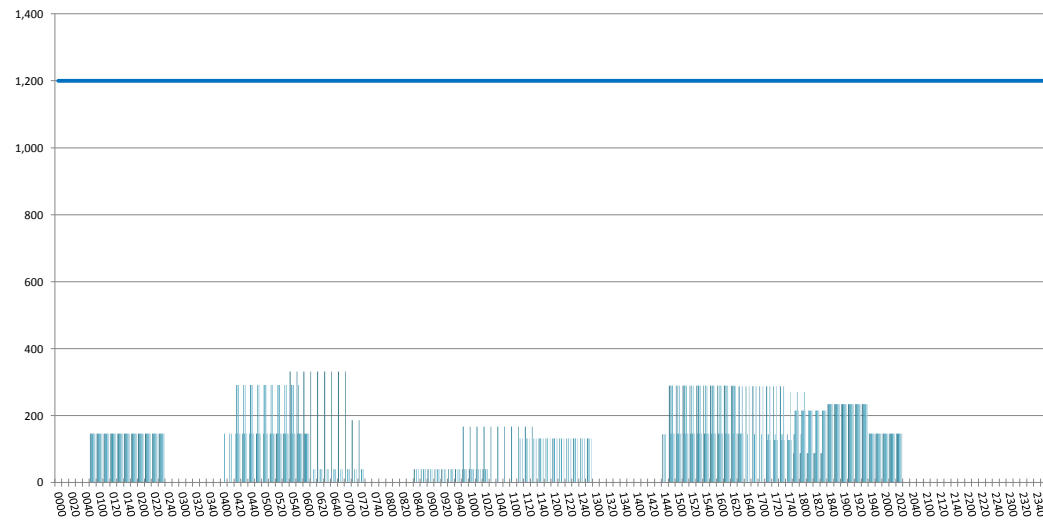
TERMINAL 1 - ARRIVALS

Peak Week Passengers per Hour - All times UTC



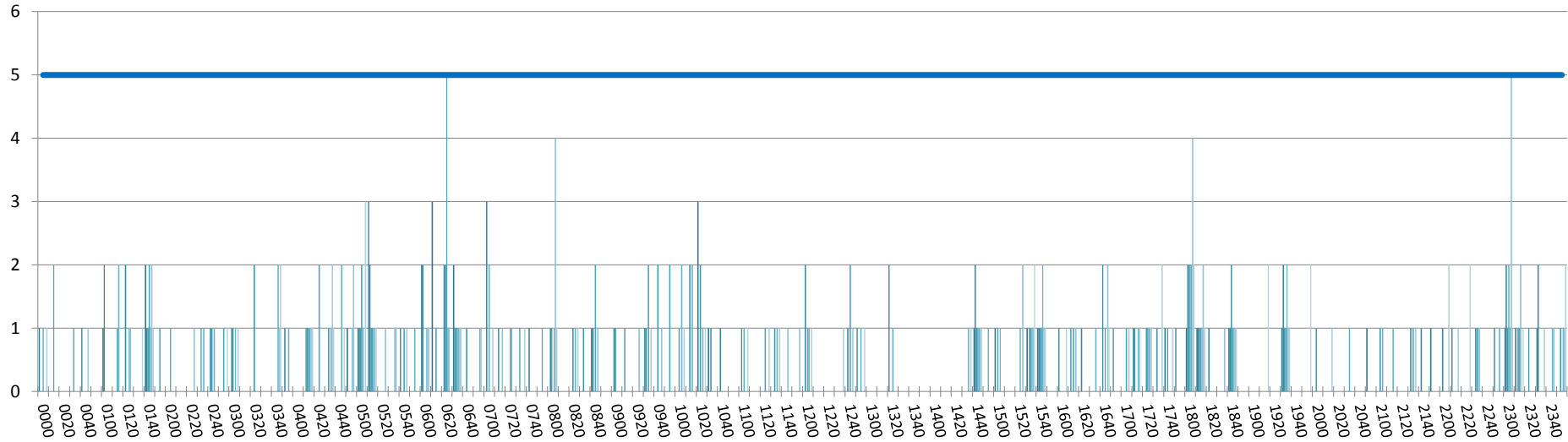
TERMINAL 1 - DEPARTURES

Peak Week Passengers per Hour - All times UTC



RUNWAY MOVEMENT ALLOCATION (R10) PEAK WEEK TOTALS

Peak Week Movements per 10 Minutes - All times UTC



GLOSSARY OF TERMS

Air Transport Movement (ATM)	A scheduled or charter passenger or freight aircraft movement.
Allocation	The allocation of slots such that demand is constrained to fit within declared scheduling limits.
Demand	The unconstrained demand for slots, prior to any schedule adjustments.
Passenger ATM	A scheduled or charter <u>passenger</u> aircraft movement (ie, excluding all-cargo aircraft movements).
Scheduling Limits	Limiting parameters declared by the Airport Operator used in the coordination process.
Seats	The number of seats based on the aircraft configuration advised by the airline.
Peak Week	The Peak Week for S15 is 12-18 October 2015
Data Snapshot	All data used for this report was as held 23 March 2015

GUIDE TO HISTOGRAMS

The histograms show the pattern of traffic by time of day against the appropriate scheduling limit. Each time period consist of seven columns representing the days-of-week, Monday through Sunday.