

Manchester International Airport

MAN

Summer 2011

START OF SEASON REPORT

KEY STATISTICS	Summer 2011	Change From Summer 2010
Total Movements	106,780	4.5%
Total Seats	16,932,908	8.2%
Average seats per movement	159	3.3%

CONTENTS	Page
Summary of Changes write-up	2-3
Scheduling Limits	4
Total Movement Figures	5
Total Seat Figures	6
Charter airline Movements and Seats	7
Movements and Seats by Destination	8
Movements and Seats by Month	9
Movements by Aircraft type	10
Runway Histograms	11
Terminal Histograms	12-14

Data in this report is current as of: 31 March 2011

No warranty whether expressed or implied as to the completeness, accuracy, fitness for purpose, or satisfactory quality is given by ACL regarding the information in this report, which is provided by third parties. Accordingly, ACL excludes all liability with regard to such data.

SUMMARY

The following is a summary of significant changes between Summer 2011 and Summer 2010:

Scheduled services:

- AA - American a/l - JFK returns for S11 with earlier start date of 06Apr.
- AF - Air France - Reduce from five to three per day to CDG as per W10 following codeshare with Flybe.
- BA - Reduce LGW from five to four per day as W10 (LHR remains eight per day).
- BD - bmi - New BSL service with replaces Swiss. Reductions on LHR, services weekdays vary between four and six per day.
- BE - Flybe - New NTE six per week eff.210May, new LDY five per week eff.19May, new ABZ three per day as W10, CDG increase three to four per day as W10. No BOH, CGI or LIG which flew in S10, MSE finishes 03Apr. Remain seven based
- CX - Cathay pacific - Will operate five freight flights per week in S11, slots held for seven per week from August which is what they operated in S10.
- CY - Reduce from five in S10 to four per week in S11.
- ED - Air Blue - Reduce from four to three ISB per week as per W10 season.
- EI - Aer Lingus - Continuation from W10 of increased ORK from six to fourteen per week and SNN thirteen per week.
- EK - Emirates - Increase from two to three per day eff.01May, new 0655/0840z with A330, lunchtime remains A380 and evening B777-300.
- EY - Etihad - Increase from seven B777-300 to fourteen A330-200's per week to AUH eff.01Aug,
- EZY - Easyjet - Additional 6th based aircraft from 27May. (x3 A319 & x3 A320). New routes BIO and PMI plus continuations from W10 of new AMS, GOT and HAM. HEL finishes in June to allow for BIO.
- FR - Ryanair - New routes ALC, FAO, MAD, PMI and TFS eff.13Apr with B737-800.
- KL - KLM - Increase from five to six AMS flights per day, new 1125/1225z.
- KM - Air Malta - Reduce from seven to six flights per week.
- LH - Lufthansa - Continue fourth daily DUS service from W10. Three of the four FRA services are now operated by bmi
- LN - Libyan - Slots cutback to 01May but will clearly depend on the situation in Libya.
- LS - Jet2 - Extra based B737-300, now nine based aircraft (x4 757s, x2 B737-800's and x3 B737-300's) New destinations BJV, BVE, LCA, PFO, increase on AGP, ALC, FNC, NCE, PMI, PSA, VCE. No MIR or SSH.
- QR - Qatar a/w - Increase from daily to double daily to DOH eff.01Jun with A330-200.
- TP - Air Portugal - New six per week LIS with A319 eff.01Jun
- TS - Air Transat - Six per week YYZ, replaces TCX.
- TU - Tunis Air - Weekly scheduled NBE (Enfidha) on Saturdays with A320 May-Oct.
- VS - Virgin - Two based aircraft, one is the new A330 and one B747-400. New LAS twice per week, BGI is once per week, MCO eleven per week. A330 ops MCO daily and B747-400 ops LAS, BGI and four MCO's.
- WW - bmi baby - New MPL (Montpellier) and PMI twice per week. BFS changes to BHD.
- ZB - Monarch - New routes BJV and PFO and additional frequencies on ALC, AYT, FAO, GIB, LCA, PMI.

Charter operators:

- BE - Flybe - New weekly NBE (Enfidha) charter on Saturdays with EMB195.
- HCC - Holidays Czech Airlines - New weekly PMI charter on Saturdays May-Sep with A320.
- MON - Monarch - New weekly INN charter. (Charters routes operated in S10 but not S11 are BJV, BOJ, CUN, IBZ, JTR,
- OAI - Tor Air - New based B737-300 part week Tue-Fri operating weekly charter series to CFU, CHQ, KGS and PVK.
- OU - Croatian a/l - Weekly PUY charter on Fridays with A320.
- STU - FlyStrategic - New based A320 operating weekly charters to CFU, HER, JSI, KGS, RHO, SKG and ZTH.
- TCX - Thomas Cook - New destination DJE, also NBE (Enfidha-Tunisia) replaces MIR five weekly, more CUN,IBZ,LCA,PMI. Reductions on ACE, SSH, No YYZ or AGA. Same number of based aircraft as S10.
- TOM - Thomson Airways - New BCN and FCO short season, change MIR to NBE four weekly. Increase on TFS. no flights to MUH or SPC. Same number of based aircraft as S10 however a B737-800 replaces a B767-300 and a B737-800 replaces a B737-300. Generally a very similar programme to S10.
- VKH - Viking Hellas - No based aircraft for S11 for Viking group. Slots for VKH are three per week LCA charters on LCA

Carriers that operated in S10 but no plans for S11:

ECA-Eurocypria, FHY-Freebird, IJ-Great Wall a/l, KK-Atlasjet, OK-CSA, SGX-Saga, TRK-Turkuaz, VIK-Viking AB, YK-Kibris

Terminal allocations:

Terminal 1 - Air Portugal

Terminal 2 - FlyStrategic, Holiday Czech Airlines, Tor Air, Tunis Air

Terminal 3 - Air France (asW10)

RUNWAY SCHEDULING LIMITS

Movements per Hour (R60) - All times UTC

MONDAY - SUNDAY	ARRIVALS																			
	SEASON	05:00	06:00	07:00	08:00	09:00	10:00	11:00	12:00	13:00	14:00	15:00	16:00	17:00	18:00	19:00	20:00	21:00	22:00	
	Summer 2010	30	30	33	32	30	29	29	29	29	29	32	33	32	32	28	28	20	15	
	Capacity Change																			
	Summer 2011	30	30	33	32	30	29	29	29	29	29	32	33	32	32	28	28	20	15	
	DEPARTURES																			
	SEASON	05:00	06:00	07:00	08:00	09:00	10:00	11:00	12:00	13:00	14:00	15:00	16:00	17:00	18:00	19:00	20:00	21:00	22:00	
	Summer 2010	42	37	35	32	32	29	29	29	29	29	30	32	34	32	26	26	20	15	
	Capacity Change																			
	Summer 2011	42	37	35	32	32	29	29	29	29	29	30	32	34	32	26	26	20	15	
TOTALS																				
SEASON	05:00	06:00	07:00	08:00	09:00	10:00	11:00	12:00	13:00	14:00	15:00	16:00	17:00	18:00	19:00	20:00	21:00	22:00		
Summer 2010	58	58	61	57	55	46	46	46	46	46	57	58	59	55	46	40	31	21		
Capacity Change																				
WINTER 2010/11	58	58	61	57	55	46	46	46	46	46	57	58	59	55	46	40	31	21		

RUNWAY SCHEDULING LIMITS - Segmented Hour

Other runway scheduling limits are 15minute constraints (R15)

TERMINAL SCHEDULING LIMITS

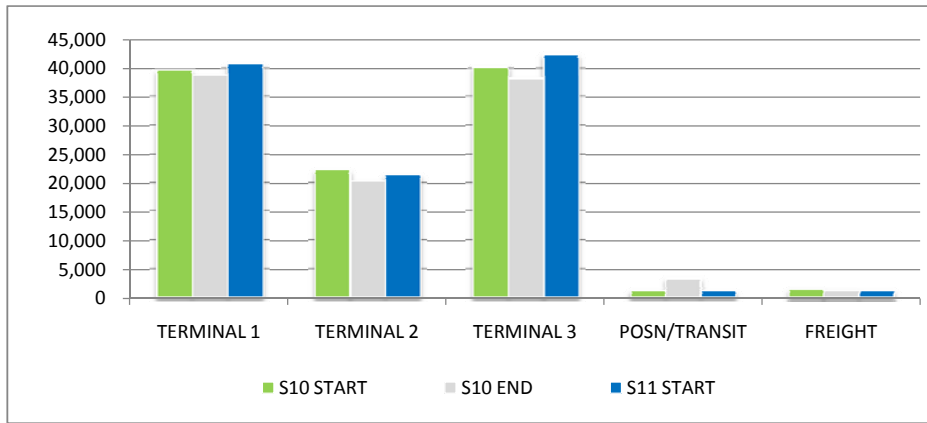
Passengers per Hour (T60)

	ARRS	DEPS
TERMINAL 1	2300	3000
TERMINAL 2	2100	2300
TERMINAL 3	1950	1950

Other Restrictions (ie. Closure periods etc)

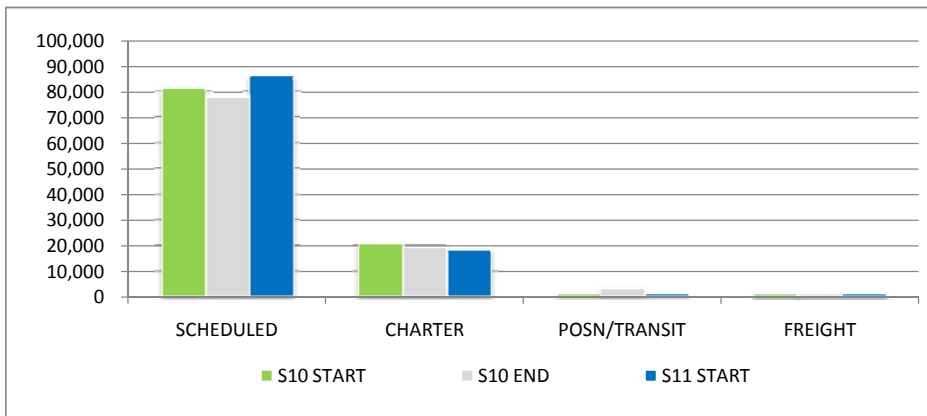
Runway 1 (23R-05L) is closed during the night period during S11, normal operations continue on Runway 2.

MOVEMENTS BY TERMINAL



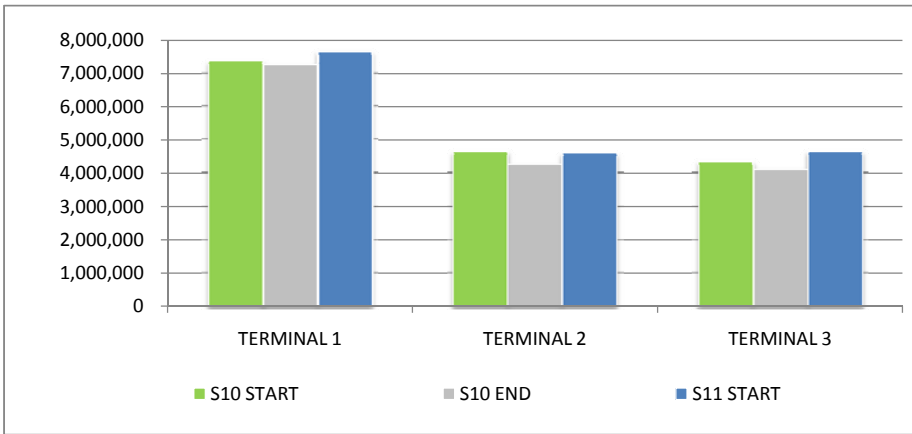
	S10 START	S10 END	S11 START	% S10 START - S11START	% S10 END - S11START
TERMINAL 1	39,720	38,801	40,697	2.4%	4.7%
TERMINAL 2	22,215	20,276	21,399	-3.8%	5.2%
TERMINAL 3	40,289	38,279	42,405	5.0%	9.7%
POSN/TRANSIT	1,158	3,320	1,119	-3.5%	-196.7%
FREIGHT	1,386	1,259	1,160	-19.5%	-8.5%
TOTAL	104,768	101,935	106,780	1.9%	4.5%

MOVEMENTS BY SERVICE TYPE



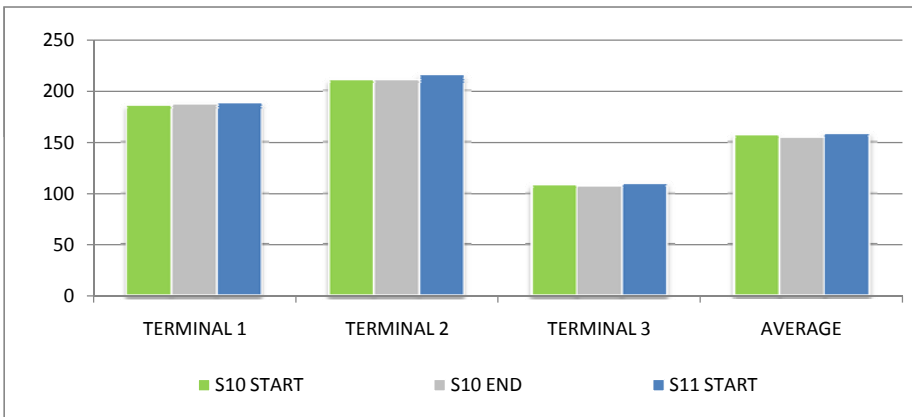
	S10 START	S10 END	S11 START	% S10 START - S11START	% S10 END - S11START
SCHEDULED	81,194	77,880	86,007	5.6%	9.4%
CHARTER	21,030	19,476	18,494	-13.7%	-5.3%
POSN/TRANSIT	1,158	3,320	1,119	-3.5%	-196.7%
FREIGHT	1,386	1,259	1,160	-19.5%	-8.5%
TOTAL	104,768	101,935	106,780	1.9%	4.5%

TOTAL SEATS BY TERMINAL



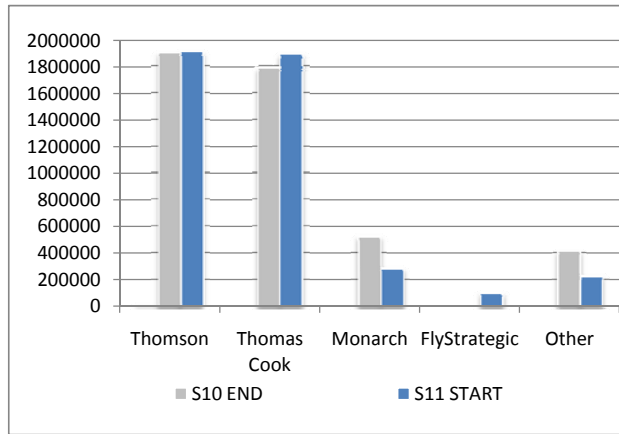
	S10 START	S10 END	S11 START	% S10 START - S11START	% S10 END - S11START
TERMINAL 1	7,373,190	7,260,717	7,662,833	3.9%	5.5%
TERMINAL 2	4,668,826	4,267,106	4,605,832	-1.3%	7.9%
TERMINAL 3	4,367,916	4,123,397	4,664,243	6.8%	13.1%
TOTAL	16,409,932	15,651,220	16,932,908	3.2%	8.2%

SEATS PER PASSENGER BY TERMINAL



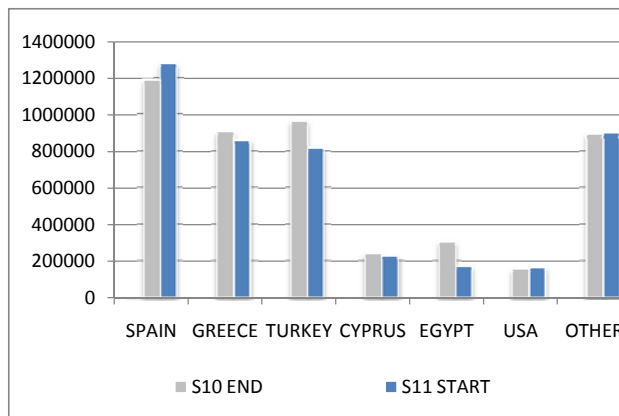
	S10 START	S10 END	S11 START	% S10 START - S11START	% S10 END - S11START
TERMINAL 1	186	187	188	1.4%	0.6%
TERMINAL 2	210	210	215	2.4%	2.3%
TERMINAL 3	108	108	110	1.5%	2.1%
AVERAGE	157	154	159	1.2%	3.3%

CHARTER SEATS BY OPERATOR



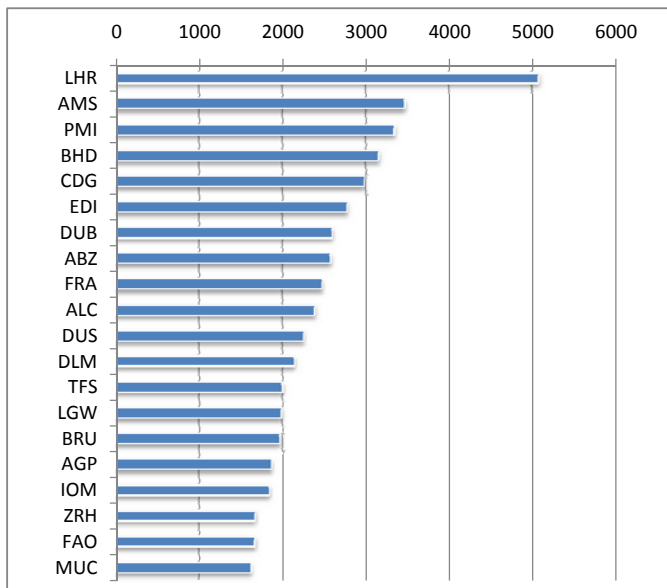
	S10 END	S11 START	% S10 END - S11START
Thomson	1903618	1913394	0.5%
Thomas Cook	1788833	1892115	5.8%
Monarch	526259	286190	-45.6%
FlyStrategic	0	99360	N/A
Other	413,898	225,858	-45.4%
TOTAL	4,632,608	4,416,917	-4.7%

CHARTER SEATS BY DESTINATION COUNTRY



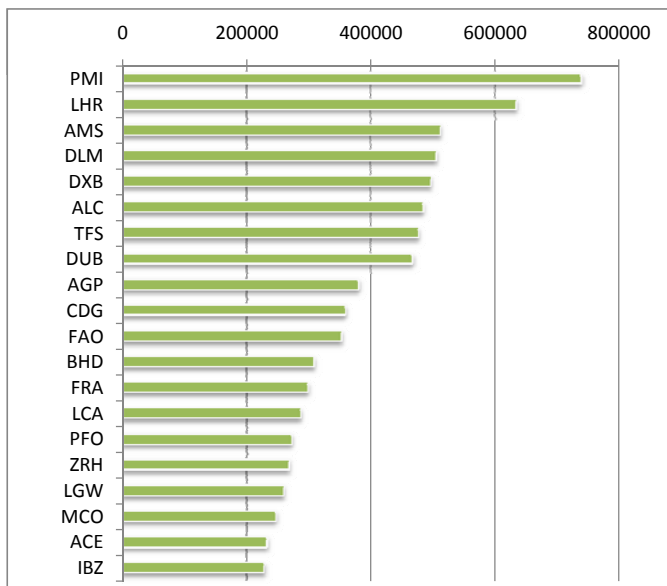
	S10 END	S11 START	% S10 END - S11START
SPAIN	1182804	1275241	7.8%
GREECE	902614	859669	-4.8%
TURKEY	959786	816979	-14.9%
CYPRUS	239951	229483	-4.4%
EGYPT	304603	171886	-43.6%
USA	153962	163991	6.5%
OTHER	888888	899668	1.2%
AVERAGE	4,632,608	4,416,917	-4.7%

MOVEMENTS BY DESTINATION



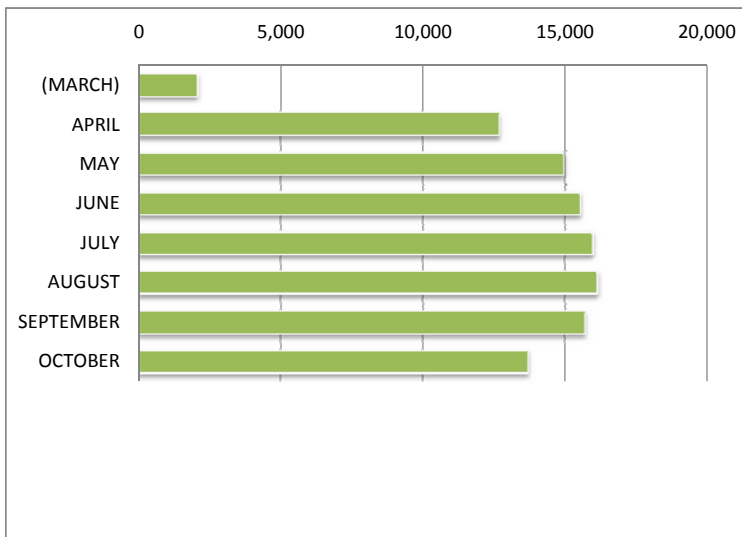
DESTINATION	ATM'S
LHR	5081
AMS	3465
PMI	3345
BHD	3159
CDG	2980
EDI	2776
DUB	2589
ABZ	2571
FRA	2477
ALC	2389
DUS	2253
DLM	2137
TFS	1995
LGW	1989
BRU	1958
AGP	1868
IOM	1835
ZRH	1674
FAO	1668
MUC	1618

SEATS BY DESTINATION



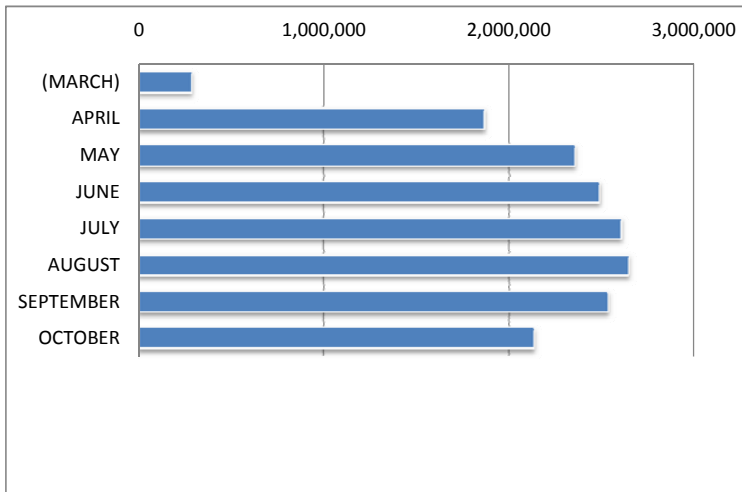
DESTINATION	SEATS
PMI	738803
LHR	634865
AMS	512544
DLM	505977
DXB	496398
ALC	483907
TFS	475940
DUB	466630
AGP	379853
CDG	358130
FAO	352997
BHD	308562
FRA	297700
LCA	285972
PFO	272015
ZRH	268622
LGW	259415
MCO	246417
ACE	232842
IBZ	228307

MOVEMENTS BY MONTH (S11)



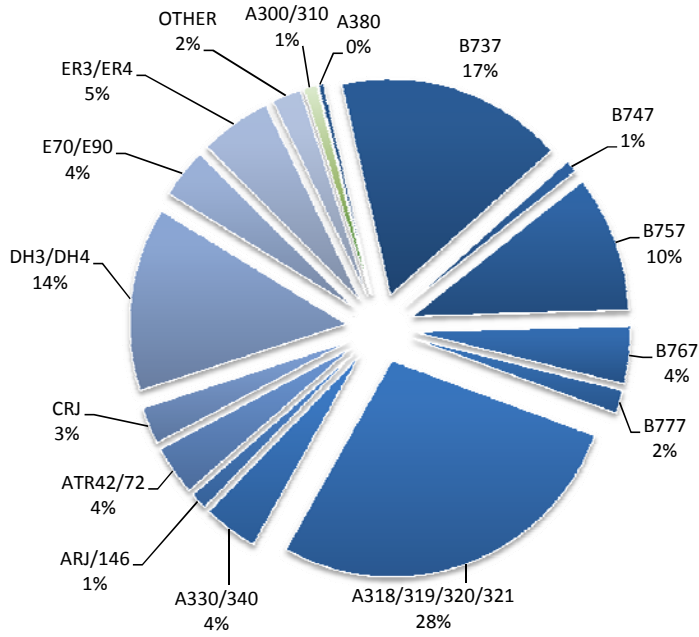
MONTH	MVTS
(MARCH)	2,059
APRIL	12,688
MAY	14,961
JUNE	15,532
JULY	15,976
AUGUST	16,144
SEPTEMBER	15,710
OCTOBER	13,710
TOTAL	106,780

SEATS BY MONTH (S11)



MONTH	SEATS
(MARCH)	285,438
APRIL	1,867,170
MAY	2,358,512
JUNE	2,490,958
JULY	2,607,647
AUGUST	2,649,515
SEPTEMBER	2,536,064
OCTOBER	2,137,901
TOTAL	16,933,205

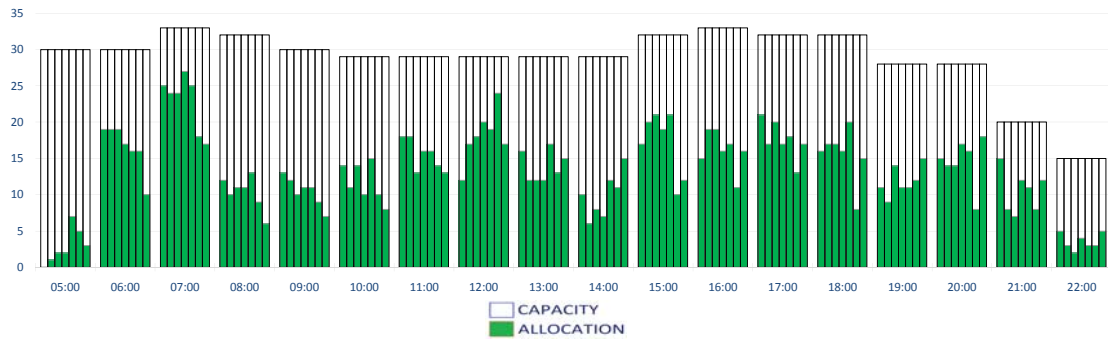
Movements by Aircraft type



Aircraft	Movements
A300/310	1043
A380	434
B737	18150
B747	1002
B757	10931
B767	4611
B777	1864
A318/319/320/321	29403
A330/340	4376
ARJ/146	1359
ATR42/72	3984
CRJ	2946
DH3/DH4	14656
E70/E90	3971
ER3/ER4	5700
OTHER	2344

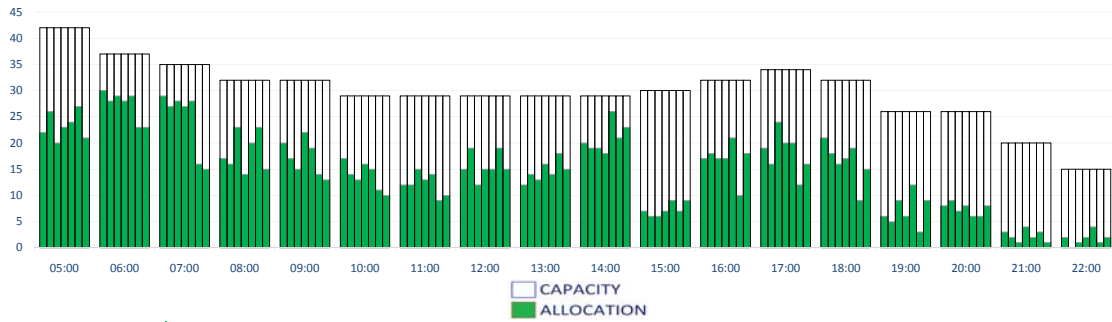
RUNWAY MOVEMENT - ARRIVALS

Peak Week Movements per Hour - All times UTC



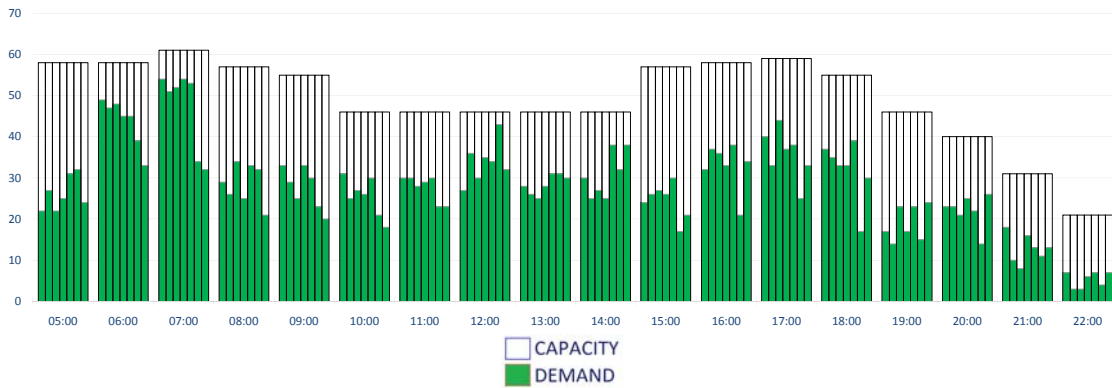
RUNWAY MOVEMENT - DEPARTURES

Peak Week Movements per Hour - All times UTC



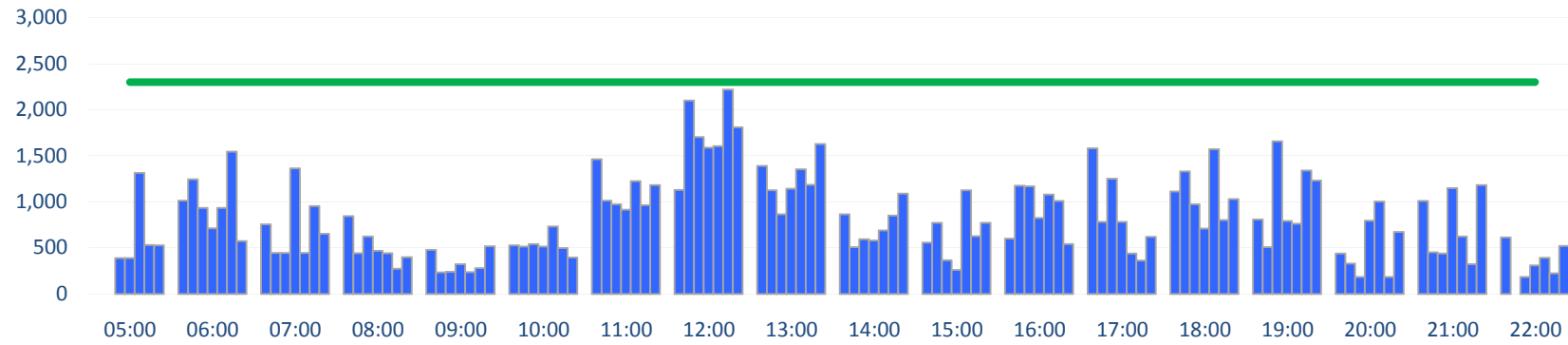
RUNWAY MOVEMENT - TOTALS

Peak Week Movements per Hour - All times UTC



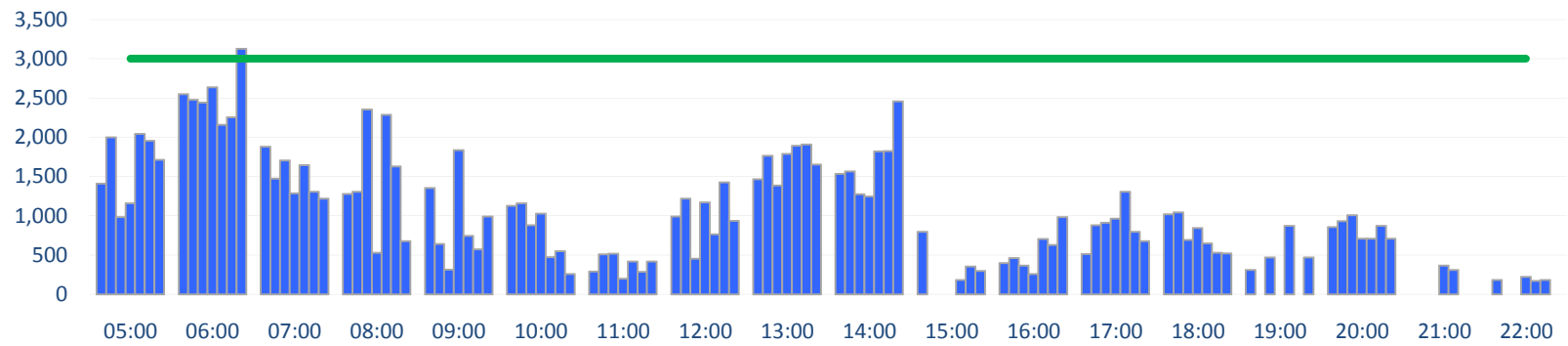
TERMINAL 1 - ARRIVALS

Peak Week Passengers per Hour - All times UTC



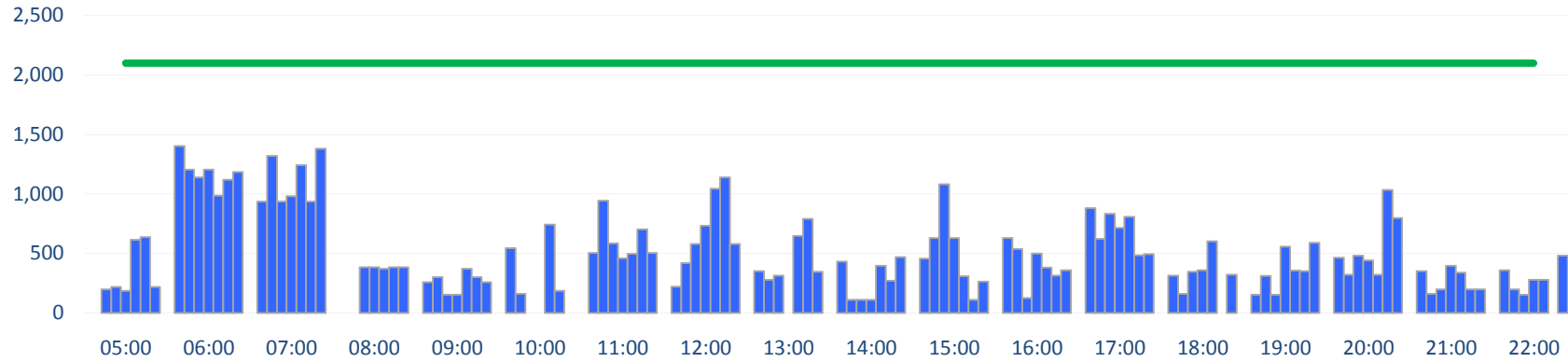
TERMINAL 1 - DEPARTURES

Peak Week Passengers per Hour - All times UTC



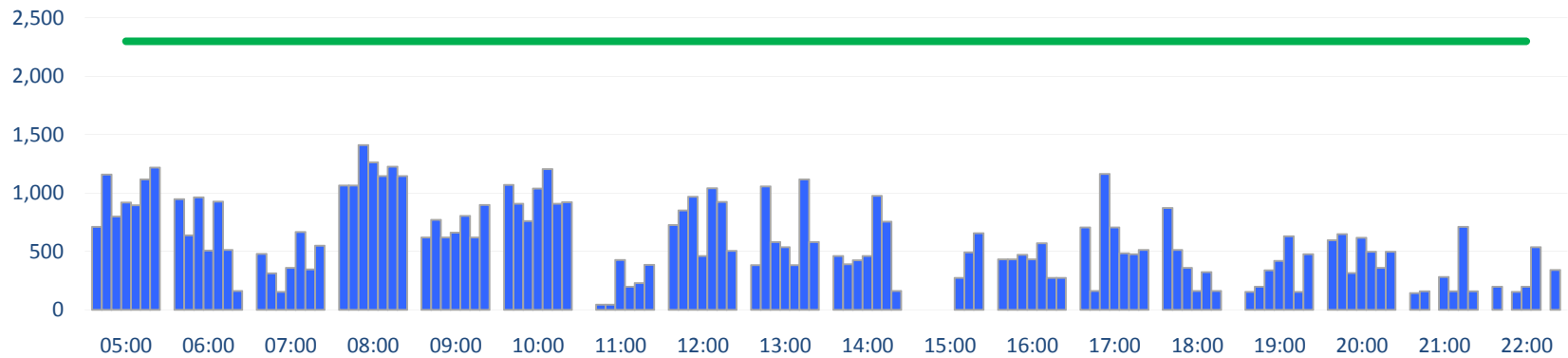
TERMINAL 2 - ARRIVALS

Peak Week Passengers per Hour - All times UTC



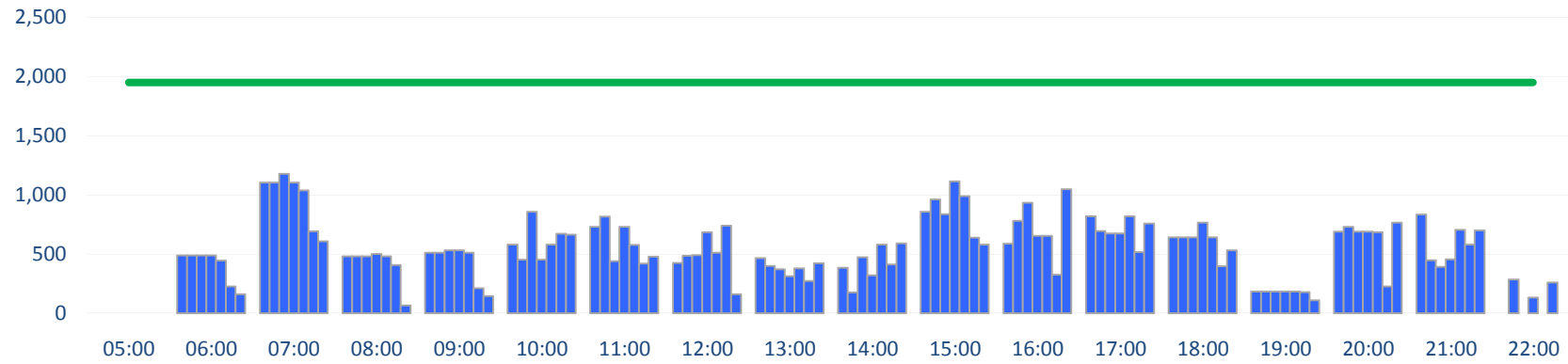
TERMINAL 2 - DEPARTURES

Peak Week Passengers per Hour - All times UTC



TERMINAL 3 - ARRIVALS

Peak Week Passengers per Hour - All times UTC



TERMINAL 3 - DEPARTURES

Peak Week Passengers per Hour - All times UTC

