



# Manchester International Airport MAN

## Summer 2012

### START OF SEASON REPORT

<b>KEY STATISTICS</b>	<b>Summer 2012</b>	<b>Change From Summer 2011</b>
Air Transport Movements Allocated	<b>107,498</b>	<b>3.3%</b>
Passenger Air Transport Movements Allocated	<b>106,481</b>	<b>3.5%</b>
Total Seats Allocated	<b>17,334,416</b>	<b>4.2%</b>
Seats per Passenger ATM	<b>163</b>	<b>0.5%</b>

#### CONTENTS

	<b>Page</b>
Summary of Changes write-up	2-3
Scheduling Limits	4
Total ATM Figures	5
Total Seat Figures	6
Charter airline ATM's and Seats	7
ATM's by Aircraft type	8
ATM's and Seats by Destination	9
ATM's and Seats by Month	10
Runway Histograms	11
Terminal Histograms	12-14
Glossary	15

Data in this report is current as of: 22 March 2011

No warranty whether expressed or implied as to the completeness, accuracy, fitness for purpose, or satisfactory quality is given by ACL regarding the information in this report, which is provided by third parties. Accordingly, ACL excludes all liability with regard to such data.

## SUMMARY

The following is a summary of significant changes between Summer 2012 and Summer 2011:

### Scheduled services:

- 4U - Germanwings - New STR service five per week from 15Jul with A319 (this replaces Lufthansa who come-off the route).
- AA - American a/l - ORD returns to a B767-300 replacing the B757 from 15Jun, JFK remains on B757.
- BA - British a/w - Increase LHR from nine to ten per day, LGW reduces from four to three per day.
- BD - bmi - No BSL which operated in S11 before being transferred to Swiss who will cancel in May12.
- BE - Flybe - Continue NQY and NOC from W11, additional services to ABZ & EDI both from four to five per day. EXT up from two to three per day. Routes cancelled are LDY, EGC, BES, FRA and NWI (NWI transfers to partner Loganair as end of W11.)
- BG - Biman - Continuation from W11 of twice weekly B777-300 service to DAC shared with LHR.
- CI - China a/l - Weekly TPE freighter with B747F finished 04Mar, no slots held for S12.
- CY - Cyprus a/w - Operated four per week in S11 but no slots held for S12.
- DL - Delta a/l - Operated JFK daily in S11 but no slots for S12 (ATL remains daily).
- DY - Norwegian Air Shuttle - Continuation from W11 of new three per week OSL with B737-800.
- EK - Emirates - Remains three per day but morning service increases from A330 to three class B777-300 from 01Jun.
- EZ - Sunair - Continuation from W11 of third midday BLL service.
- EY - Easyjet - New routes BFS, BER and MAD continue from W11. Routes that will not operate in S12 are GOT, HEL, MAH and ZRH. Remains six based aircraft.
- FI - Icelandair - Continues three per week direct to KEF as per W11.
- FR - Ryanair - Four based B737-800's, new destinations are BIQ(Biarritz), BZR(Beziers), IBZ, MJV, REU, TLL(Tallin), TUF(Tours) and VLC plus other new routes continues from W11.
- FX - Fedex - Daystop ATR72 changes to B757F.
- KM - Air Malta - Reduce from six to five per week to MLA.
- LH - Lufthansa - New daily BER service eff.03Jun with A319. HAM reduces from three to two per day. Weekly JFK freighter with MD11F now changes to IAH (Houston). DFW continues weekly.
- LOG - Loganair - Continuation from W11 of new three per day service to NWI with Do328. (replaced Flybe)
- LS - Jet2.com - One extra based aircraft now ten based. New routes BCN, CDG, PUY and TLS. No BVE.
- LX - Swiss - BSL route finishes 20May. (no other carriers on this route).
- QR - Qatar a/w - Reduce DOH service from fourteen to ten per week.
- RE - Aer Arann - GWY and KIR cancelled as W11, both routes now unserved.
- SI - Blue Island - Continuation from W11 of new daily JER with ATR42.
- SK - SAS - New BGO four per week continued as W11.
- TK - Turkish a/l - Increase from seven to ten per week to IST with B737-800. Increase to nine from 25Mar and ten from 28May.
- TS - Air Transat - New routes YVR and YYC and increased YYZ (replaces TCX canadian flying).
- TU - Tunis Air - New TUN service on Wednesdays plus weekly NBE as per S11.
- UA - United a/l - New route IAD (Washington) from 02May which replaces the second EWR service. Both EWR and IAD are daily with B757.
- VG - Cityjet - Reduce ANR from twice to once per day with FK50.
- YW - Air Nostrum - Continuation from W11 of new MAD service with CRJ1000.
- ZB - Monarch - New routes DBV, DLM, MXP, SSH, VCE and VRN. Frequency reductions on most existing routes. Reduce by one based aircraft to 9.5.

**Charter operators:**

- BE - Flybe - New weekly charter destinations for Flybe are CLY(Calvi) and LDE (Lourdes). No NBE (Enfidha).
- BJ - Nouvelair - New weekly DJE (Djerba) series May-Oct on Saturdays with A320.
- CJ - Cityflyer - New route OLB (Olbia) weekly charter on Sundays, plus the existing CAG on Saturdays.
- LLC - Small Planet - Based B737-300 Tue-Fri operating charters to Greece, CHQ, KGS and PVK.
- MON - Monarch (charter) - New route HRG, increase on SFB, no DLM or LXR.
- TCX - Thomas Cook - No new destinations, No DJE, GOI, YVR or YYC. Reductions on various existing routes. Reduce based aircraft by four to nine for S12.
- TOM - Thomson Airways - New destination PXO (Porto Santo) and SPC (La Palma). No RMF, MBA or MJT. Reductions on DLM and PUJ and PMI. Remains thirteen based aircraft.
- ZY - Sky Airlines - Short four week series 01-22Oct on Mondays with A320 from/to AYT.

**Carriers that operated in S11 but no plans for S12:**

AB - Air Berlin, HCC - Holiday Czech a/l, OAI - Tor Air, OHY - Onur Air, OU - Croatia a/l, S4 - SATA, T3 - Eastern a/w, VKH/VQ - Viking Hellas, WW - bmi baby

**Terminal allocations:**

Terminal 1 - Norwegian Air Shuttle, Easyjet (T3 to T1 as W11), Small Planet, Blue Island a/w.  
Terminal 2 - Biman, Monarch (T1 to T2 as W11)  
Terminal 3 - Air Nostrum, KLM (T2 to T3 as W11), Loganair, Ryanair (T2 to T3 as end of W11)

## RUNWAY SCHEDULING LIMITS

Movements per Hour (R60) - All times UTC

MONDAY - SUNDAY	ARRIVALS																			CHANGE	
	SEASON	05:00	06:00	07:00	08:00	09:00	10:00	11:00	12:00	13:00	14:00	15:00	16:00	17:00	18:00	19:00	20:00	21:00	22:00	AVE	Total
	Summer 2011	30	30	33	32	30	29	29	29	29	29	32	33	32	32	28	28	20	15	29	520
	Capacity Change																				
	Summer 2012	30	30	33	32	30	29	29	29	29	29	32	33	32	32	28	28	20	15	29	520
	DEPARTURES																				
	SEASON	05:00	06:00	07:00	08:00	09:00	10:00	11:00	12:00	13:00	14:00	15:00	16:00	17:00	18:00	19:00	20:00	21:00	22:00	AVE	Total
	Summer 2011	42	37	35	32	32	29	29	29	29	29	30	32	34	32	26	26	20	15	30	538
	Capacity Change																				
	Summer 2012	42	37	35	32	32	29	29	29	29	29	30	32	34	32	26	26	20	15	30	538
TOTALS																					
SEASON	05:00	06:00	07:00	08:00	09:00	10:00	11:00	12:00	13:00	14:00	15:00	16:00	17:00	18:00	19:00	20:00	21:00	22:00	AVE	Total	
Summer 2011	58	58	61	57	55	46	46	46	46	46	57	58	59	55	46	40	31	21	49	886	
Capacity Change																					
Summer 2012	58	58	61	57	55	46	46	46	46	46	57	58	59	55	46	40	31	21	49	886	

Second runway in operation 0630-1030L and 1600-2000L (except Saturday afternoon and Sunday morning which remains single runway)

## RUNWAY SCHEDULING LIMITS - Segmented Hour

Other runway scheduling limits are 15minute constraints (R15)

## TERMINAL SCHEDULING LIMITS

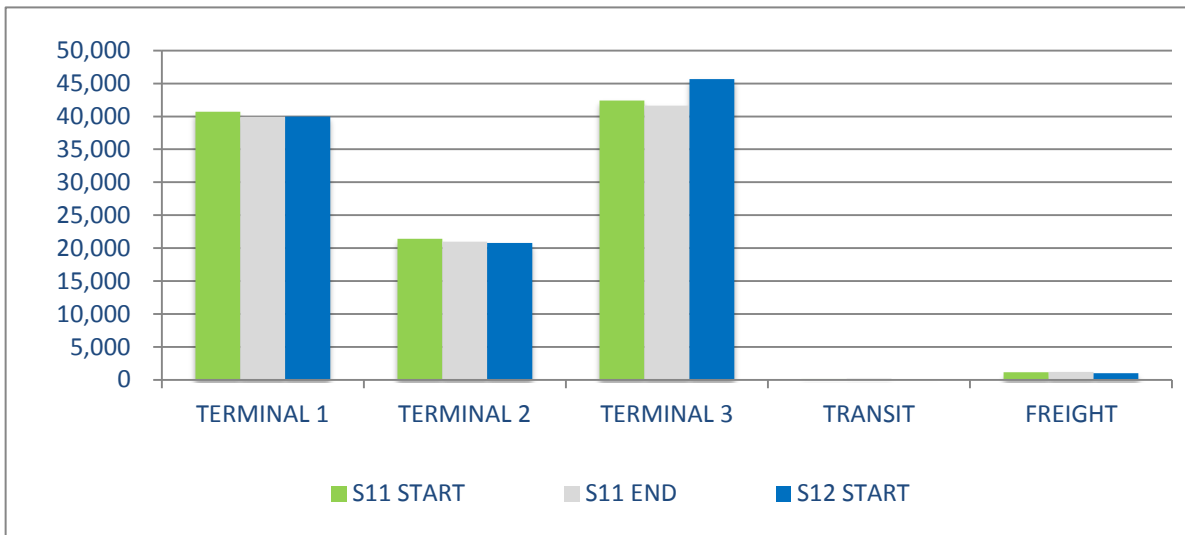
Passengers per Hour (T60)

	ARRS	DEPS
TERMINAL 1	2300	3000
TERMINAL 2	2100	2300
TERMINAL 3	1950	1950

## Other Restrictions (ie. Closure periods etc)

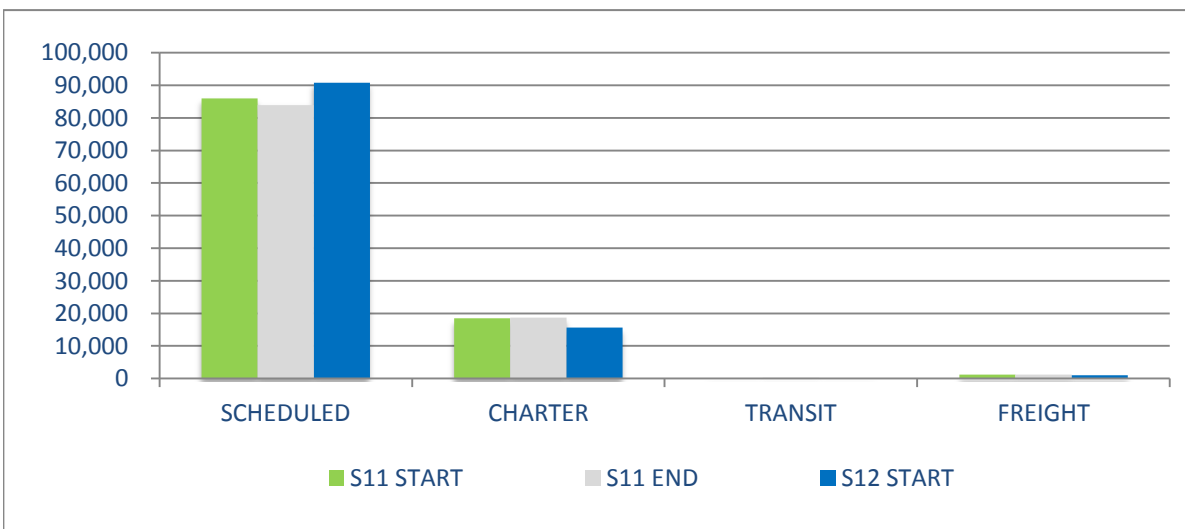
None

## ATM's BY TERMINAL



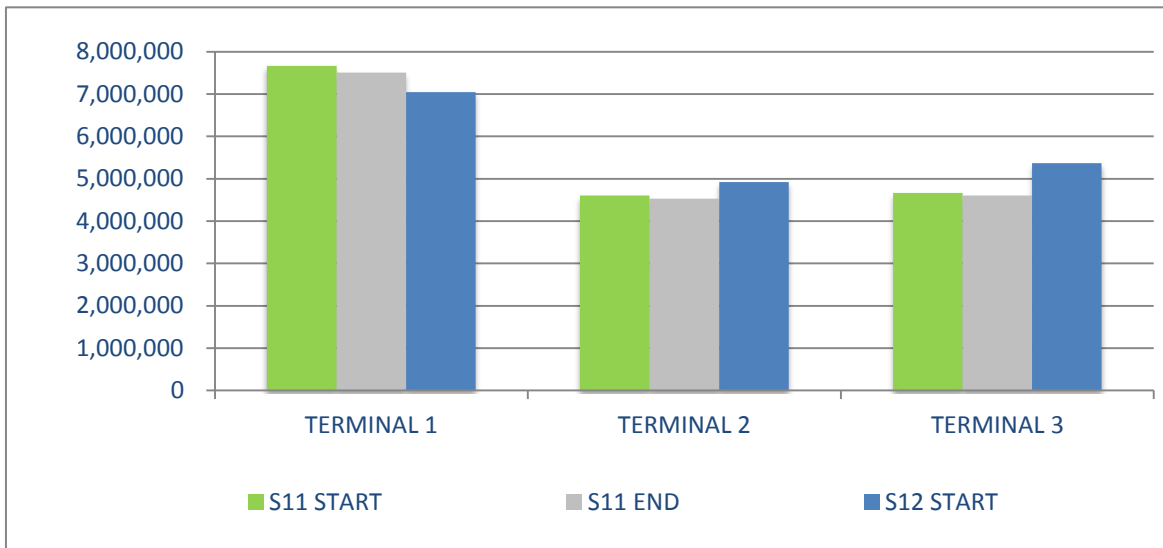
	S11 START	S11 END	S12 START	% S11 START - S12START	% S11 END - S12START
<b>TERMINAL 1</b>	40,697	39,940	39,974	-1.8%	0.1%
<b>TERMINAL 2</b>	21,399	20,977	20,795	-2.9%	-0.9%
<b>TERMINAL 3</b>	42,405	41,629	45,657	7.1%	8.8%
<b>TRANSIT</b>	142	185	55	-158.2%	-236.4%
<b>FREIGHT</b>	1,160	1,223	1,017	-14.1%	-20.3%
<b>TOTAL</b>	105,803	103,954	107,498	1.6%	3.3%

## ATM's BY SERVICE TYPE



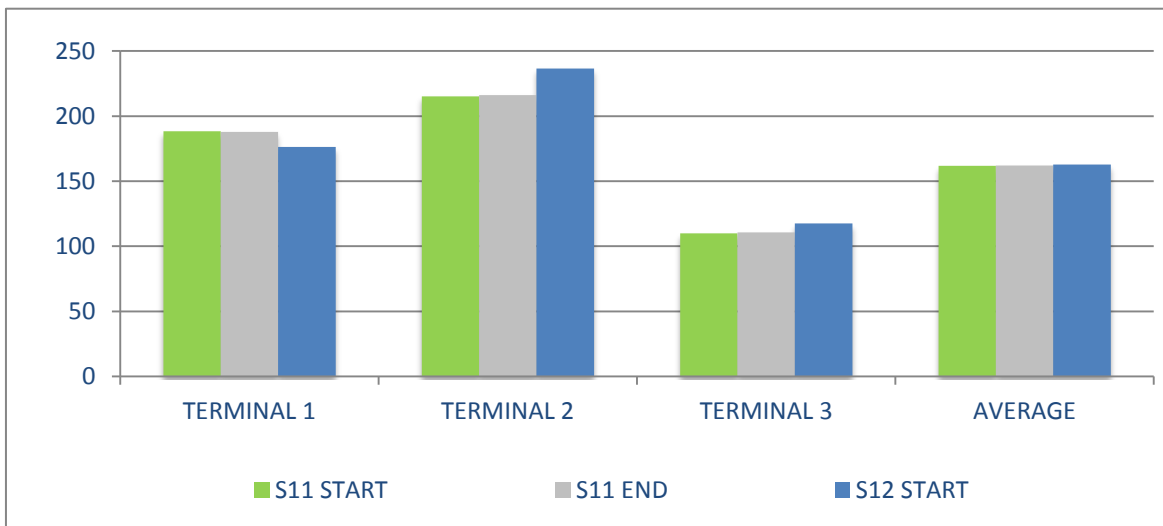
	S11 START	S11 END	S12 START	% S11 START - S12START	% S11 END - S12START
<b>SCHEDULED</b>	86,007	83,892	90,810	5.3%	7.6%
<b>CHARTER</b>	18,494	18,654	15,616	-18.4%	-19.5%
<b>TRANSIT</b>	142	185	55	-158.2%	-236.4%
<b>FREIGHT</b>	1,160	1,223	1,017	-14.1%	-20.3%
<b>TOTAL</b>	105,803	103,954	107,498	1.6%	3.3%

## TOTAL SEATS BY TERMINAL



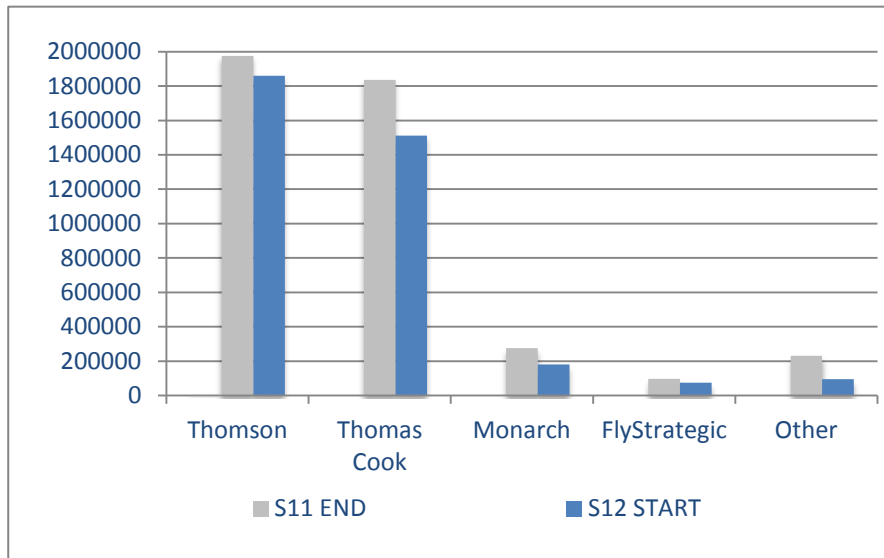
	S11 START	S11 END	S12 START	% S11 START - S12START	% S11 END - S12START
TERMINAL 1	7,662,833	7,504,080	7,048,947	-8.0%	-6.1%
TERMINAL 2	4,605,832	4,531,451	4,919,807	6.8%	8.6%
TERMINAL 3	4,664,243	4,606,532	5,365,662	15.0%	16.5%
<b>TOTAL</b>	<b>16,932,908</b>	<b>16,642,063</b>	<b>17,334,416</b>	<b>2.4%</b>	<b>4.2%</b>

## SEATS PER PASSENGER ATM BY TERMINAL



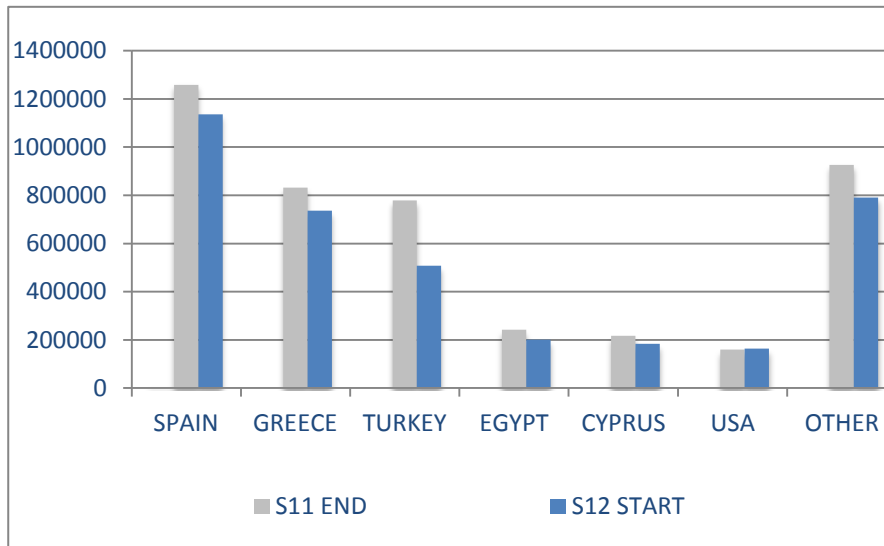
	S11 START	S11 END	S12 START	% S11 START - S12START	% S11 END - S12START
TERMINAL 1	188	188	176	-6.3%	-6.1%
TERMINAL 2	215	216	237	9.9%	9.5%
TERMINAL 3	110	111	118	6.8%	6.2%
<b>AVERAGE</b>	<b>162</b>	<b>162</b>	<b>163</b>	<b>0.6%</b>	<b>0.5%</b>

## CHARTER SEATS BY OPERATOR



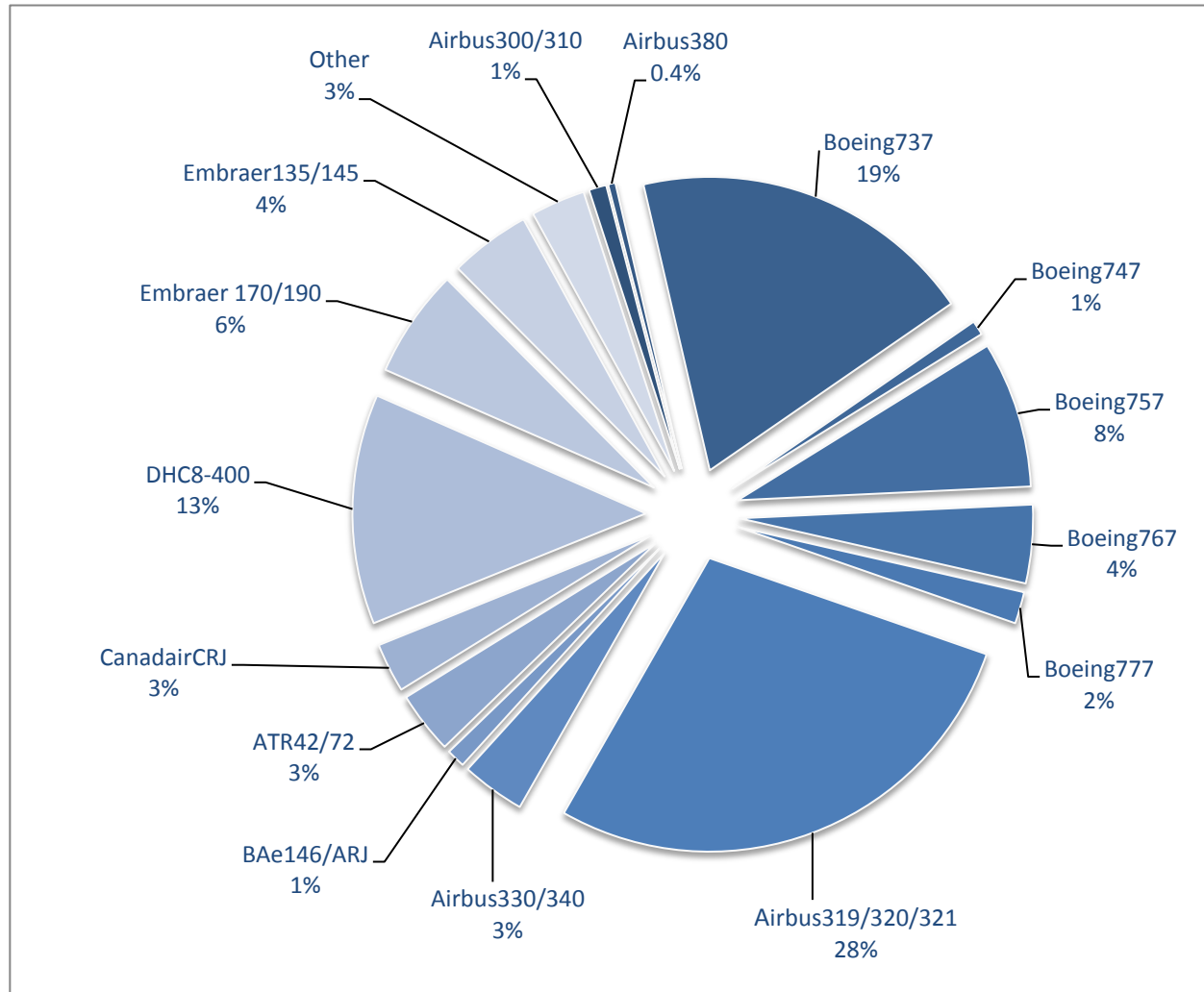
	S11 END	S12 START	% S11 END - S12START
<b>Thomson</b>	1975179	1860075	-5.8%
<b>Thomas Cook</b>	1835820	1511473	-17.7%
<b>Monarch</b>	276090	180256	-34.7%
<b>FlyStrategic</b>	97020	73620	-24.1%
<b>Other</b>	230,066	94,065	-59.1%
<b>TOTAL</b>	<b>4,414,175</b>	<b>3,719,489</b>	<b>-15.7%</b>

## CHARTER SEATS BY DESTINATION COUNTRY



	S11 END	S12 START	% S11 END - S12START
<b>SPAIN</b>	1258324	1135500	-9.8%
<b>GREECE</b>	831601	735804	-11.5%
<b>TURKEY</b>	778429	507830	-34.8%
<b>EGYPT</b>	242771	201134	-17.2%
<b>CYPRUS</b>	216685	183823	-15.2%
<b>USA</b>	160248	164218	2.5%
<b>OTHER</b>	926117	791180	-14.6%
<b>TOTAL</b>	<b>4,414,175</b>	<b>3,719,489</b>	<b>-15.7%</b>

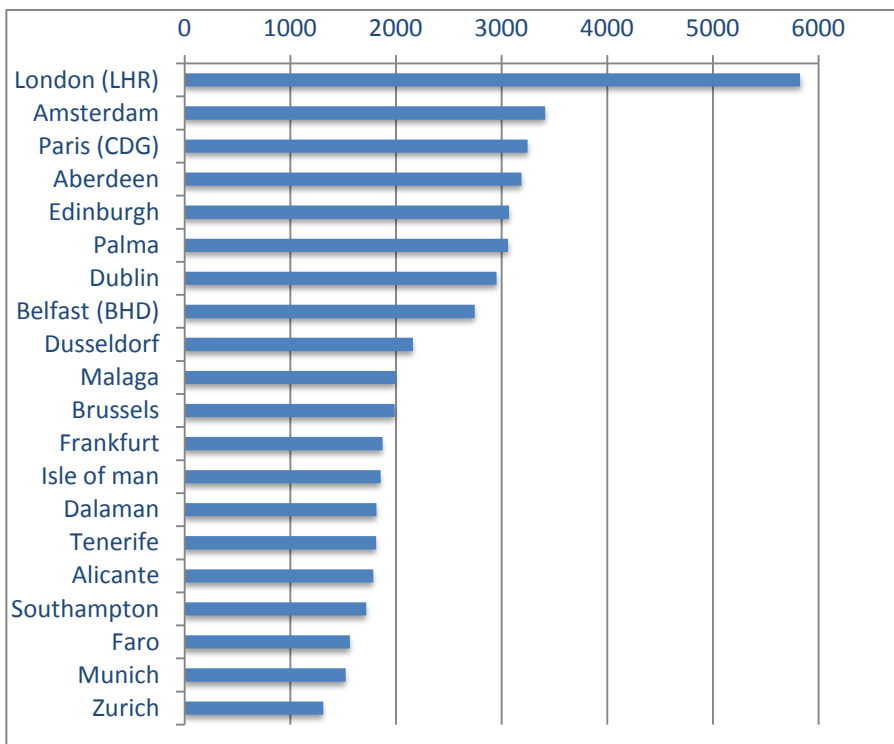
## AIR TRANSPORT MOVEMENTS BY AIRCRAFT TYPE



Aircraft	ATM's
Airbus300/310	1038
Airbus380	434
Boeing737	20439
Boeing747	857
Boeing757	8678
Boeing767	4637
Boeing777	1880
Airbus319/320/321	30033
Airbus330/340	3760
BAe146/ARJ	1106
ATR42/72	3666
CanadairCRJ	2912
DHC8-400	13626
Embraer170/190	6423
Embraer135/145	4796
Other	3213

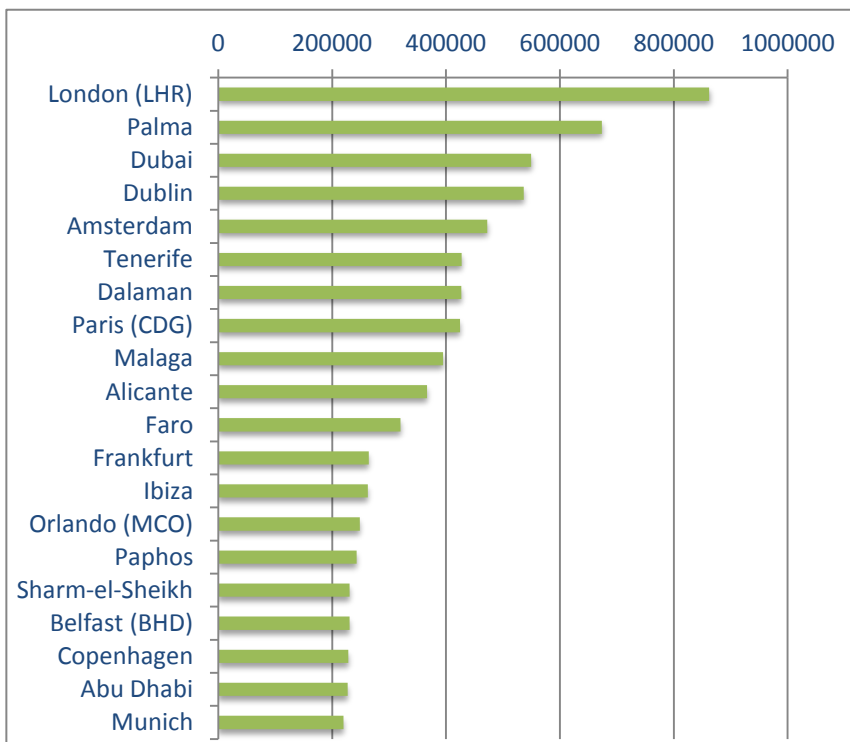


## AIR TRANSPORT MOVEMENTS BY DESTINATION S12



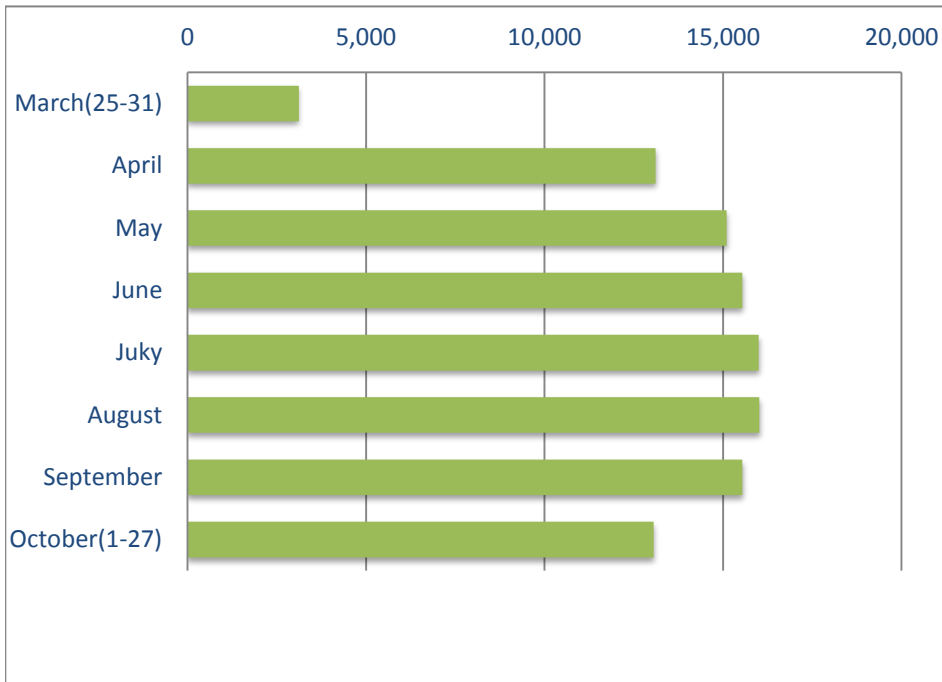
DESTINATION	ATM'S
London (LHR)	5824
Amsterdam	3412
Paris (CDG)	3247
Aberdeen	3188
Edinburgh	3072
Palma	3063
Dublin	2953
Belfast (BHD)	2747
Dusseldorf	2161
Malaga	1997
Brussels	1990
Frankfurt	1873
Isle of man	1854
Dalaman	1815
Tenerife	1812
Alicante	1786
Southampton	1720
Faro	1565
Munich	1524
Zurich	1312

## SEATS BY DESTINATION S12



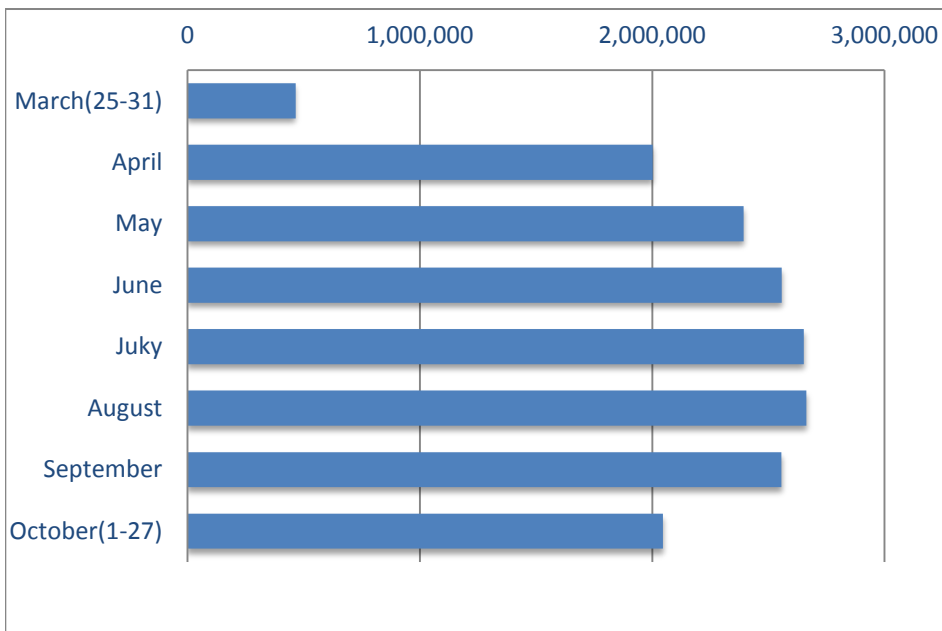
DESTINATION	SEATS
London (LHR)	862177
Palma	673751
Dubai	549642
Dublin	536196
Amsterdam	472432
Tenerife	427550
Dalaman	426638
Paris (CDG)	424416
Malaga	394802
Alicante	366722
Faro	320177
Frankfurt	263996
Ibiza	262515
Orlando (MCO)	248476
Paphos	242963
Sharm-el-Sheikh	230796
Belfast (BHD)	230386
Copenhagen	228532
Abu Dhabi	227416
Munich	219898

## AIR TRANSPORT MOVEMENTS BY MONTH (S12)



MONTH	ATM's
March(25-31)	3,116
April	13,116
May	15,099
June	15,542
Juky	16,000
August	16,020
September	15,546
October(1-27)	13,059
<b>TOTAL</b>	<b>107,498</b>

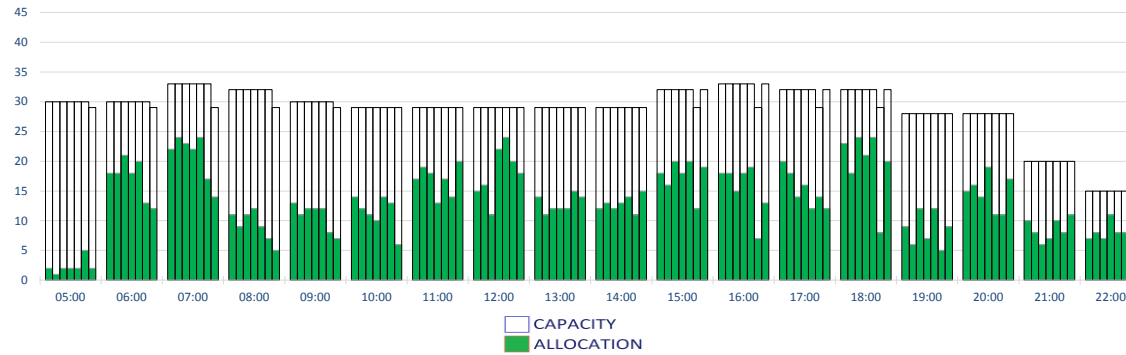
## SEATS BY MONTH (S12)



MONTH	SEATS
March(25-31)	464,914
April	2,001,929
May	2,392,864
June	2,556,692
Juky	2,652,229
August	2,662,938
September	2,556,265
October(1-27)	2,046,585
<b>TOTAL</b>	<b>17,334,416</b>

### RUNWAY MOVEMENT ALLOCATED - ARRIVALS

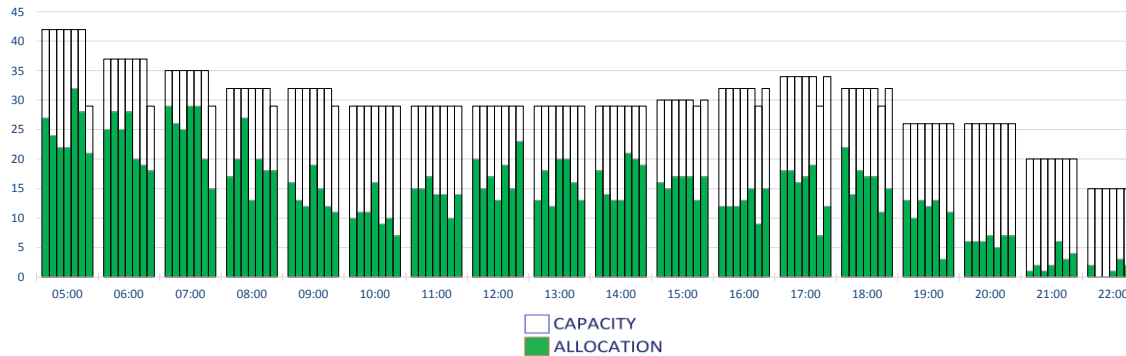
Peak Week Movements per Hour - All times UTC



	CAPACITY							ALLOCATED							
	Mon	Tue	Wed	Thu	Fri	Sat	Sun	Mon	Tue	Wed	Thu	Fri	Sat	Sun	
05:00	30	30	30	30	30	30	29	2	1	2	2	2	5	2	
06:00	30	30	30	30	30	30	29	18	18	21	18	20	13	12	
07:00	33	33	33	33	33	33	29	22	24	23	22	24	17	14	
08:00	32	32	32	32	32	32	29	11	9	11	12	9	7	5	
09:00	30	30	30	30	30	30	29	13	11	12	12	12	8	7	
10:00	29	29	29	29	29	29	29	14	12	11	10	14	13	6	
11:00	29	29	29	29	29	29	29	17	19	18	13	17	14	20	
12:00	29	29	29	29	29	29	29	15	16	11	22	24	20	18	
13:00	29	29	29	29	29	29	29	14	11	12	12	12	15	14	
14:00	29	29	29	29	29	29	29	12	13	12	13	14	11	15	
15:00	32	32	32	32	32	32	29	32	18	16	20	18	20	12	19
16:00	33	33	33	33	33	33	29	32	18	18	15	18	19	7	13
17:00	32	32	32	32	32	32	29	32	20	18	14	16	12	14	12
18:00	32	32	32	32	32	32	29	32	23	18	24	21	24	8	20
19:00	28	28	28	28	28	28	28	28	9	6	12	7	12	5	9
20:00	28	28	28	28	28	28	28	28	15	16	14	19	11	11	17
21:00	20	20	20	20	20	20	20	20	10	8	6	7	10	8	11
22:00	15	15	15	15	15	15	15	15	7	8	7	11	8	8	13

### RUNWAY MOVEMENT ALLOCATED - DEPARTURES

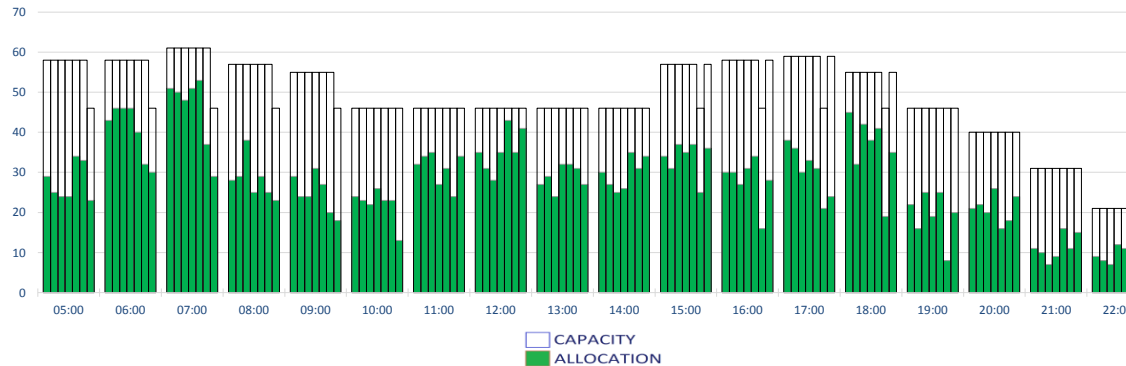
Peak Week Movements per Hour - All times UTC



	CAPACITY							ALLOCATED							
	Mon	Tue	Wed	Thu	Fri	Sat	Sun	Mon	Tue	Wed	Thu	Fri	Sat	Sun	
05:00	42	42	42	42	42	42	29	27	24	22	22	32	28	21	
06:00	37	37	37	37	37	37	29	25	28	25	28	20	19	18	
07:00	35	35	35	35	35	35	29	29	26	25	29	29	20	15	
08:00	32	32	32	32	32	32	29	17	20	27	13	20	18	18	
09:00	32	32	32	32	32	32	29	16	13	12	19	15	12	11	
10:00	29	29	29	29	29	29	29	10	11	11	16	9	10	7	
11:00	29	29	29	29	29	29	29	15	15	17	14	14	10	14	
12:00	29	29	29	29	29	29	29	20	15	17	13	19	15	23	
13:00	29	29	29	29	29	29	29	13	18	12	20	20	16	13	
14:00	29	29	29	29	29	29	29	18	14	13	13	21	20	19	
15:00	30	30	30	30	30	30	29	16	15	17	17	17	13	17	
16:00	32	32	32	32	32	32	29	32	12	12	13	15	9	15	
17:00	34	34	34	34	34	34	29	34	18	18	16	17	19	7	12
18:00	32	32	32	32	32	32	29	32	22	14	18	17	17	11	15
19:00	26	26	26	26	26	26	26	26	13	10	13	12	13	3	11
20:00	26	26	26	26	26	26	26	26	6	6	7	5	7	7	7
21:00	20	20	20	20	20	20	20	20	1	2	1	2	6	3	4
22:00	15	15	15	15	15	15	15	15	2		1	3	2	3	

### RUNWAY MOVEMENT ALLOCATED - TOTALS

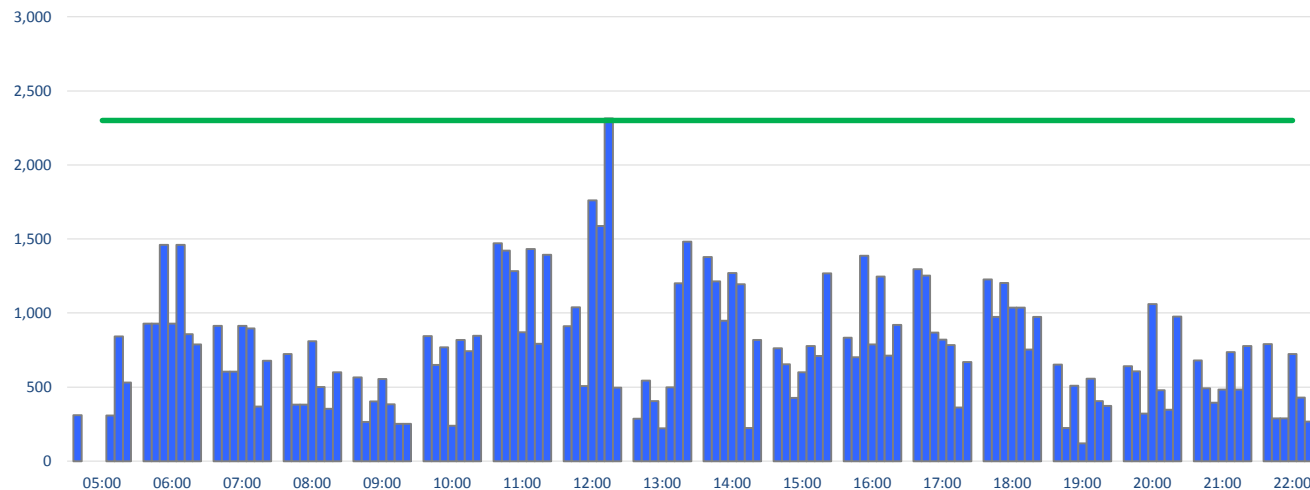
Peak Week Movements per Hour - All times UTC



	CAPACITY							ALLOCATED							
	Mon	Tue	Wed	Thu	Fri	Sat	Sun	Mon	Tue	Wed	Thu	Fri	Sat	Sun	
05:00	58	58	58	58	58	58	46	29	25	24	24	34	33	23	
06:00	58	58	58	58	58	58	46	43	46	46	46	40	32	30	
07:00	61	61	61	61	61	61	46	51	50	48	51	53	37	29	
08:00	57	57	57	57	57	57	46	28	29	38	25	29	25	23	
09:00	55	55	55	55	55	55	46	29	24	24	31	27	20	18	
10:00	46	46	46	46	46	46	46	24	23	22	26	23	23	13	
11:00	46	46	46	46	46	46	46	32	34	35	27	31	24	34	
12:00	46	46	46	46	46	46	46	35	31	28	35	43	35	41	
13:00	46	46	46	46	46	46	46	27	29	24	32	32	31	27	
14:00	46	46	46	46	46	46	46	30	27	25	26	35	31	34	
15:00	57	57	57	57	57	57	46	57	34	31	37	35	37	25	36
16:00	58	58	58	58	58	58	46	58	30	30	27	31	34	16	28
17:00	59	59	59	59	59	59	46	59	38	36	30	33	31	21	24
18:00	55	55	55	55	55	55	46	55	45	32	42	38	41	19	35
19:00	46	46	46	46	46	46	46	46	22	16	25	19	25	8	20
20:00	40	40	40	40	40	40	40	40	21	22	20	26	16	18	24
21:00	31	31	31	31	31	31	31	31	11	10	7	9	16	11	15
22:00	21	21	21	21	21	21	21	21	9	8	7	12	11	10	16

### TERMINAL 1 - ARRIVALS (ALLOCATED)

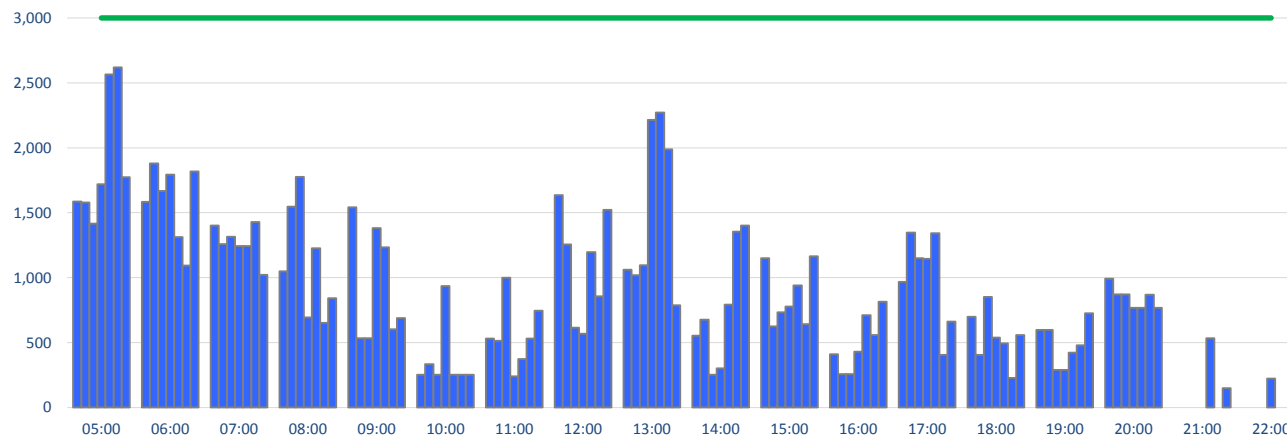
Peak Week Passengers per Hour - All times UTC



	ALLOCATED							Capacit Limit
	Mon	Tue	Wed	Thu	Fri	Sat	Sun	
05:00	310	0	0	0	309	842	531	2300
06:00	928	928	1460	928	1460	858	788	2300
07:00	914	605	605	914	896	369	678	2300
08:00	724	381	381	810	501	354	600	2300
09:00	565	264	404	555	384	251	251	2300
10:00	844	650	768	239	819	742	847	2300
11:00	1471	1421	1284	870	1432	793	1393	2300
12:00	911	1038	506	1762	1588	2314	496	2300
13:00	287	544	405	221	498	1200	1482	2300
14:00	1378	1215	948	1271	1195	223	819	2300
15:00	762	654	426	599	777	710	1268	2300
16:00	834	701	1387	788	1247	712	921	2300
17:00	1296	1252	868	821	783	362	669	2300
18:00	1227	973	1203	1037	1037	753	975	2300
19:00	652	223	510	120	556	405	372	2300
20:00	642	607	320	1060	479	348	977	2300
21:00	679	492	395	484	736	484	778	2300
22:00	791	289	289	723	430	266	1179	2300

### TERMINAL 1 - DEPARTURES (ALLOCATED)

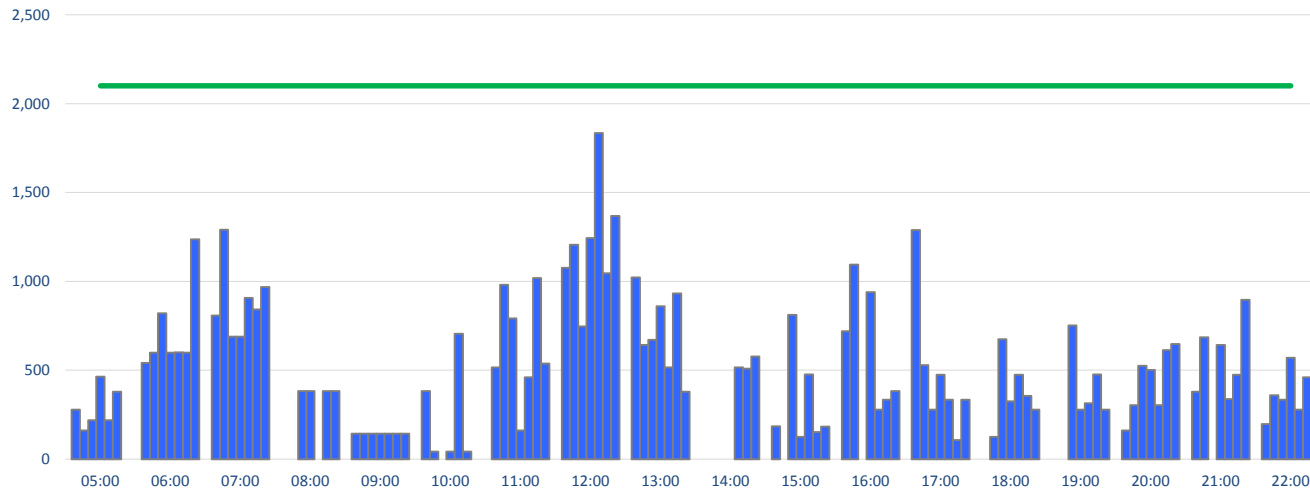
Peak Week Passengers per Hour - All times UTC



	ALLOCATED							Capacit Limit
	Mon	Tue	Wed	Thu	Fri	Sat	Sun	
05:00	1586	1579	1416	1719	2565	2618	1774	3000
06:00	1583	1880	1668	1792	1312	1092	1817	3000
07:00	1401	1259	1314	1244	1244	1429	1021	3000
08:00	1049	1546	1776	693	1225	651	841	3000
09:00	1542	534	534	1381	1234	602	688	3000
10:00	251	334	251	934	251	251	251	3000
11:00	530	512	1000	239	372	530	744	3000
12:00	1635	1256	615	567	1196	855	1523	3000
13:00	1061	1019	1095	2214	2271	1989	787	3000
14:00	553	677	252	301	791	1354	1402	3000
15:00	1149	625	732	776	939	642	1165	3000
16:00	410	257	257	430	711	557	813	3000
17:00	967	1347	1149	1144	1342	405	662	3000
18:00	697	404	850	537	494	226	557	3000
19:00	598	598	288	288	421	478	726	3000
20:00	991	871	871	768	768	869	768	3000
21:00	0	0	0	0	533	0	148	3000
22:00	0	0	0	223	0	0	0	3000

### TERMINAL 2 - ARRIVALS (ALLOCATED)

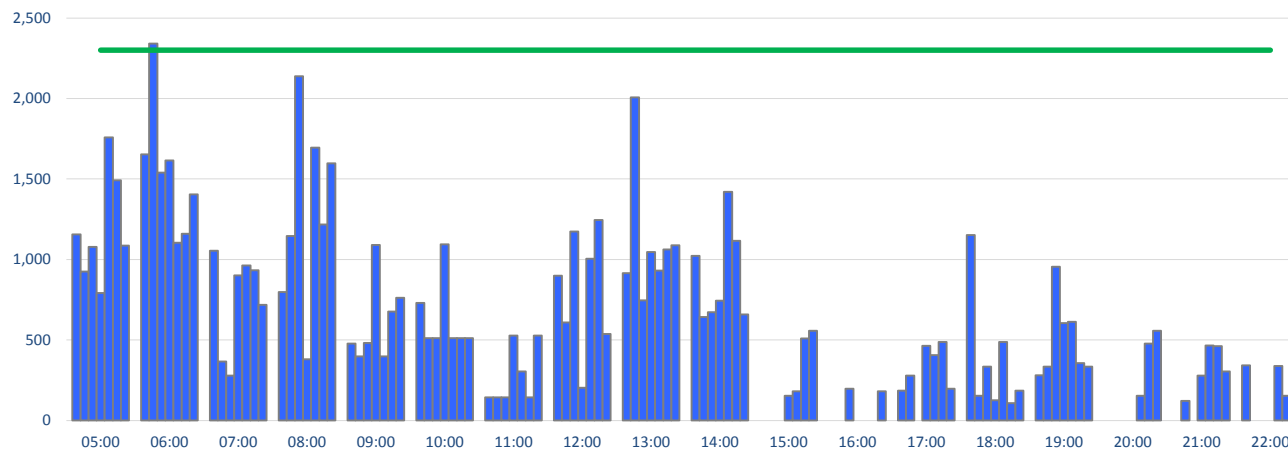
Peak Week Passengers per Hour - All times UTC



	ALLOCATED							Capacit Limit
	Mon	Tue	Wed	Thu	Fri	Sat	Sun	
05:00	279	161	219	464	219	380	0	2100
06:00	541	599	820	599	601	599	1237	2100
07:00	808	1291	689	689	908	842	968	2100
08:00	0	0	383	383	0	383	383	2100
09:00	144	144	144	144	144	144	144	2100
10:00	383	43		43	705	43	0	2100
11:00	517	981	791	161	461	1018	538	2100
12:00	1076	1207	746	1244	1835	1046	1368	2100
13:00	1023	643	672	860	517	933	380	2100
14:00	0	0	0	0	516	509	578	2100
15:00	185	0	811	126	477	153	182	2100
16:00	719	1094	0	939	279	335	383	2100
17:00	1290	529	279	475	334	107	334	2100
18:00	0	126	675	325	474	356	279	2100
19:00	0	0	753	279	314	477	279	2100
20:00	161	304	525	502	304	614	647	2100
21:00	380	686	0	643	338	474	897	2100
22:00	198	359	335	570	279	461	678	2100

### TERMINAL 2 - DEPARTURES (ALLOCATED)

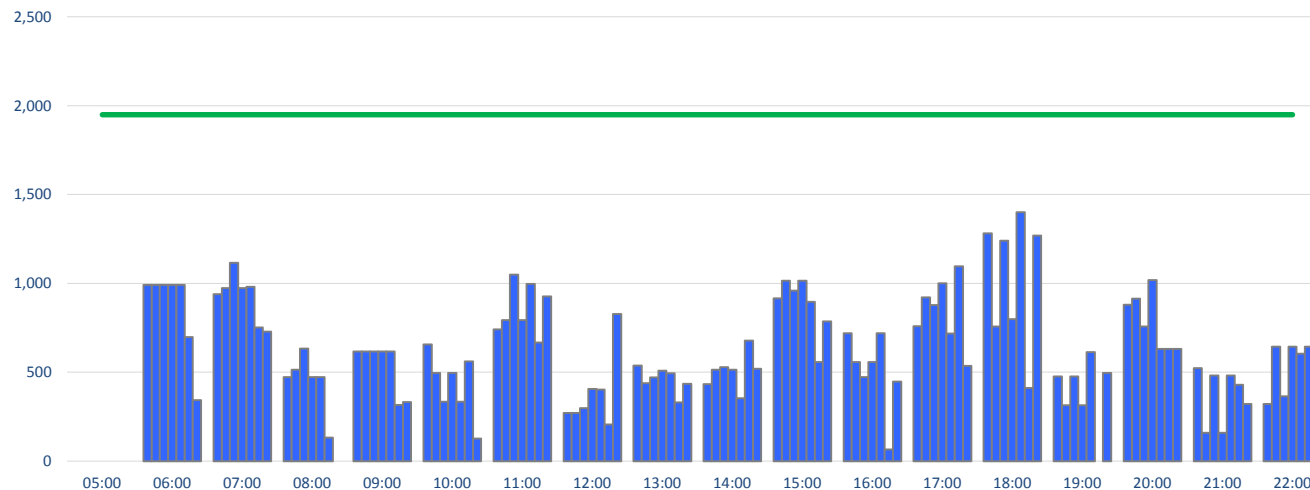
Peak Week Passengers per Hour - All times UTC



	ALLOCATED							Capacit Limit
	Mon	Tue	Wed	Thu	Fri	Sat	Sun	
05:00	1155	925	1078	791	1759	1492	1086	2300
06:00	1653	2340	1540	1615	1104	1160	1404	2300
07:00	1054	367	279	901	963	933	718	2300
08:00	797	1145	2138	380	1695	1217	1597	2300
09:00	477	397	482	1090	397	676	761	2300
10:00	730	511	511	1094	511	511	511	2300
11:00	144	144	144	527	305	144	527	2300
12:00	900	608	1174	204	1005	1246	538	2300
13:00	915	2006	746	1046	931	1062	1089	2300
14:00	1023	643	672	744	1421	1115	659	2300
15:00	0	0	0	153	182	509	558	2300
16:00	0	0	198	0	0	0	182	2300
17:00	185	279		464	405	488	198	2300
18:00	1151	153	334	126	487	107	185	2300
19:00	280	334	954	605	613	356	334	2300
20:00	0	0	0	0	153	477	558	2300
21:00	0	122	0	279	465	461	304	2300
22:00	343	0	0	0	338	153	281	2300

### TERMINAL 3 - ARRIVALS (ALLOCATED)

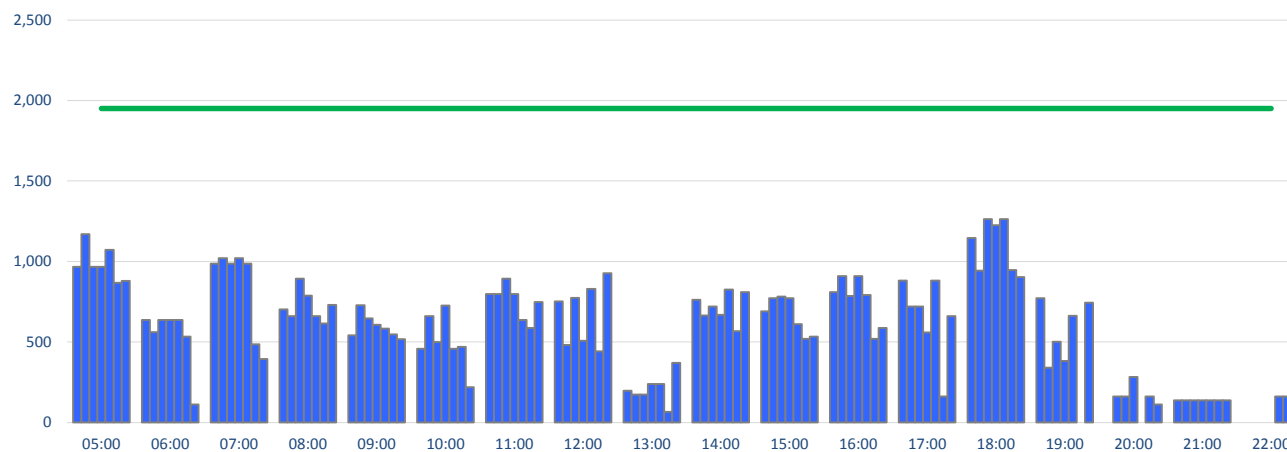
Peak Week Passengers per Hour - All times UTC



	ALLOCATED							Capacit Limit
	Mon	Tue	Wed	Thu	Fri	Sat	Sun	
05:00	0	0	0	0	0	0	0	1950
06:00	992	992	992	992	992	698	344	1950
07:00	939	973	1117	973	981	753	728	1950
08:00	473	515	634	473	473	132	0	1950
09:00	617	617	617	617	617	316	333	1950
10:00	657	496	335	496	335	561	127	1950
11:00	742	794	1050	794	997	668	927	1950
12:00	271	271	298	407	403	206	828	1950
13:00	537	439	471	509	495	330	436	1950
14:00	434	515	529	515	354	678	519	1950
15:00	916	1016	960	1016	897	558	787	1950
16:00	719	558	473	558	719	66	448	1950
17:00	760	921	879	1001	718	1096	536	1950
18:00	1282	757	1240	799	1401	411	1269	1950
19:00	476	315	476	315	614		496	1950
20:00	880	914	758	1019	631	631	631	1950
21:00	524	160	482	160	482	430	321	1950
22:00	322	644	364	644	605	644	644	1950

### TERMINAL 3 - DEPARTURES (ALLOCATED)

Peak Week Passengers per Hour - All times UTC



	ALLOCATED							Capacit Limit
	Mon	Tue	Wed	Thu	Fri	Sat	Sun	
05:00	967	1169	967	967	1072	867	879	1950
06:00	636	561	636	636	636	534	112	1950
07:00	986	1020	986	1020	986	485	393	1950
08:00	702	660	894	787	660	614	731	1950
09:00	541	729	646	607	583	548	517	1950
10:00	457	660	499	727	457	469	218	1950
11:00	798	798	893	798	637	587	747	1950
12:00	751	481	774	508	830	442	926	1950
13:00	197	173	173	239	239	66	370	1950
14:00	762	664	720	668	825	566	809	1950
15:00	690	771	781	771	610	520	534	1950
16:00	810	910	786	910	791	520	586	1950
17:00	881	720	720	559	881	161	660	1950
18:00	1145	942	1264	1225	1264	946	904	1950
19:00	771	340	501	382	662	0	744	1950
20:00	0	161	161	283	0	161	112	1950
21:00	138	138	138	138	138	138	138	1950
22:00	0	0	0	0	161	161	161	1950

## GLOSSARY OF TERMS

---

<b>Air Transport Movement (ATM)</b>	A scheduled or charter passenger or freight aircraft movement. Positioning flights and General/Business Aviation flights are excluded.
<b>Allocation</b>	The allocation of slots such that demand is constrained to fit within declared scheduling limits.
<b>Demand</b>	The unconstrained demand for slots, prior to any schedule adjustments.
<b>Passenger ATM</b>	A scheduled or charter <u>passenger</u> aircraft movement (ie, excluding all-cargo and positioning aircraft movements).
<b>Scheduling Limits</b>	Limiting parameters declared by the Airport Operator used in the coordination process.
<b>Seats</b>	The number of seats based on the aircraft configuration advised by the airline.
<b>Peak Week</b>	The Peak Week for S12 IS W/C 03Sep 2012
<b>Data Snapshot</b>	All data used for this report was as held 22March 2012

### GUIDE TO HISTOGRAMS

---

The histograms show the pattern of traffic by time of day against the appropriate scheduling limit. Each time period consist of seven columns representing the days-of-week, Monday through Sunday. Passenger histograms reflect agreed load factors.