



Airport Coordination Limited

Manchester Airport

MAN

Winter 2013

START OF SEASON REPORT

KEY STATISTICS	Winter 2013	Change From Winter 2012 Start	Change From Winter 2012 end
Air Transport Movements Allocated	57,235	-1.0%	1.0%
Passenger Air Transport Movements Allocated	56,592	-1.0%	1.0%
Total Seats Allocated	8,963,104	1.7%	3.5%
Seats per Passenger ATM	158	2.7%	2.5%

CONTENTS

	Page
Summary of Changes write-up	1
Scheduling Limits	3
Total ATM Figures	4
Total Seat Figures	5
Top 10 seats carriers and Country	6
ATM's by Aircraft type	7
ATM's and Seats by Destination	8
ATM's and Seats by Week	9
Runway Histograms	10
Terminal Histograms	11-14
Glossary	15

Data in this report is current as of: 22 October 2013

No warranty whether expressed or implied as to the completeness, accuracy, fitness for purpose, or satisfactory quality is given by ACL regarding the information in this report, which is provided by third parties. Accordingly, ACL excludes all liability with regard to such data.

SUMMARY

The following is a summary of significant changes between Winter 2013 and Winter 2012:

Scheduled services:

- 4U - Germanwings - No STR which operated in W12 and S13 until Sep13. HAM twice daily with CR9 replaces partner LH.
- AF - Air France - Remains three per day to CDG but aircraft upgrade to A321 on most services.(+6% growth in seats vs W12)
- BA - British a/w - LHR remains eleven per day, LGW is gone as S13.
- BE - Flybe - Increase EDI from three to four per day as S13. WAT is new continuation from S13.(same overall seat capacity as W12).
- BM - bmi Regional - Six per week LYS service finishes 10Nov, reduce EDI from four to three per day as S13.
- DY - Norwegian Air Shuttle - SVG is new continued from S13 twice per week. ARN and OSL reduce from four to three per week, all services with B737-800.
- EI - Aer Lingus - Increase DUB from four to five per day as per in S13. ORK up from x14pw to x16pw, SNN remains twice per day.
- EK - Emirates - Remains three per day but morning service reverts to two-class B777-300 offering 428seats rather than 360 with the three class aircraft.(+6% seat capacity vs W12).
- EZ - Sunair - GOT reduces from twice from twice to once per day.
- EY - Easyjet - New route LYS weekly ski, DME and PRG continue from S13, increased frequency on BSL, CPH, KEF and TLV, eight based aircraft.(+15% growth vs W12).
- FR - Ryanair - New route continuations from Summer are ACE, KRK, MJV and PFO, DUB increases from x21 to x30pw, three based aircraft. (+18% growth in seat capacity vs W12).
- HRM - Hermes - Operated GOT and ARN services with A320 in W12, no slots held for W13.
- J7 - Flynonstop - New KRS (Kristiansand) service twice per week Fri and Sun with EMB190.
- LH - Lufthansa - Reduce DUS from four to three per day, No TXL as S13, introduction of B777F on IAH freight services from 03Dec, DFW remains MD11F. HAM services swap over to Germanwings.
- LS - Jet2 - New for Winter are FAO, LYS, PMI, VCE. No TLV service which finishes 04Nov. Increased frequency on Spanish routes, new IVL xmas charters in Dec.(+33% growth in seats vs W12)
- LX - Swiss - Reduce ZRH service from three to two per day for W13.
- MS - Egyptair - Continue from S13 with new five per week CAI with B737-800. Tue, Thu, Fri, Sat and Sun.
- PK - PIA - JFK reduce from three to two per week as late S13, ISB is four per week, LHE is two.
- SI - Blue Island - Daily JER operated in W12 but ended Jun13, no slots for W13.
- TCX - Thomas Cook - Will operate some of their services as scheduled services, ANU, BGI, CUN, FUE, GOI, GVA, LPA, TFS and UVF. ANU is a new route for Thomas Cook from 19Dec doubledrop with BGI. No LXR for W13.
- TK - Turkish a/l - Increase from ten to fourteen per week as per S13, all with B737-900.(+28% extra seat capacity vs W12)
- US - US Airways - Continue with smaller A330-200 rather than A330-300 as per S13.
- VS - Virgin - W12 was based A330 and B747-400, W13 is based B747-400 plus weekend based B747-400, no A330. No LAS for W13. MCO is eight per week and BGI twice per week. LHR continues from S13 as four per day with A320.
- ZB - Monarch - Increase on GIB, reduction on GNB, MUC and VRN. (-12% reduction in seat capacity vs W12).

Charter operators:

- FHY - Freebird - New twice weekly AYT charter series full season on Monday and Wednesday with A320.
- ST - Germania - Series of adhoc cruise charter flights to BGO (Bergen) and TSO (Tromso).
- TCX - Thomas Cook - No LXR for W13, More BGI, BJL, FUE, NBE.(TCX overall +4% seat growth vs W12)
- TOM - Thomson - One based B787 for W13 replaces B767-300. More ACE, BGI, CMF, FUE and TFS less SFB and SSH, No GNB, LXR, RMF or TCP. Some RVN adhoc in Dec which are new for TOM. (-3% reduction in seat capacity vs W12).

Carriers that operated in W12 but no plans for W13:

HRM - Hermes Airlines, SI - Blue Island

Terminal allocations:

Terminal 1 - Egyptair, Flynonstop, also Brussels Airlines moved from T3

Terminal 2 -

Terminal 3 -

RUNWAY SCHEDULING LIMITS

Movements per Hour (R60) - All times UTC

MONDAY - SUNDAY	ARRIVALS																		CHANGE		
	SEASON	06:00	07:00	08:00	09:00	10:00	11:00	12:00	13:00	14:00	15:00	16:00	17:00	18:00	19:00	20:00	21:00	22:00	23:00	AVE	Total
	Winter 2012	30	30	30	30	30	28	28	28	28	28	30	30	30	30	28	28	20	15	28	501
	Capacity Change																				
	Winter 2013	30	30	30	30	30	28	28	28	28	28	30	30	30	30	28	28	20	15	28	501
	DEPARTURES																				
	SEASON	06:00	07:00	08:00	09:00	10:00	11:00	12:00	13:00	14:00	15:00	16:00	17:00	18:00	19:00	20:00	21:00	22:00	23:00	AVE	Total
	Winter 2012	32	36	33	32	30	28	28	28	28	28	30	30	30	30	28	28	20	15	29	514
	Capacity Change																				
	Winter 2013	32	36	33	32	30	28	28	28	28	28	30	30	30	30	28	28	20	15	29	514
TOTALS																					
SEASON	06:00	07:00	08:00	09:00	10:00	11:00	12:00	13:00	14:00	15:00	16:00	17:00	18:00	19:00	20:00	21:00	22:00	23:00	AVE	Total	
Winter 2012	51	56	56	53	51	44	44	44	44	44	54	54	54	51	44	44	31	21	47	840	
Capacity Change																					
Winter 2013	51	56	56	53	51	44	44	44	44	44	54	54	54	51	44	44	31	21	47	840	

Second runway in operation 0630-1030L and 1600-2000L (except Saturday afternoon and Sunday morning which remains single runway)

TERMINAL SCHEDULING LIMITS

Passengers per Hour (T60)

	ARRS	DEPS
TERMINAL 1	2300	3000
TERMINAL 2	2100	2300
TERMINAL 3 DOMESTIC	1000	
TERMINAL 3 INTERNATIONAL	1100	
TERMINAL 3		1500

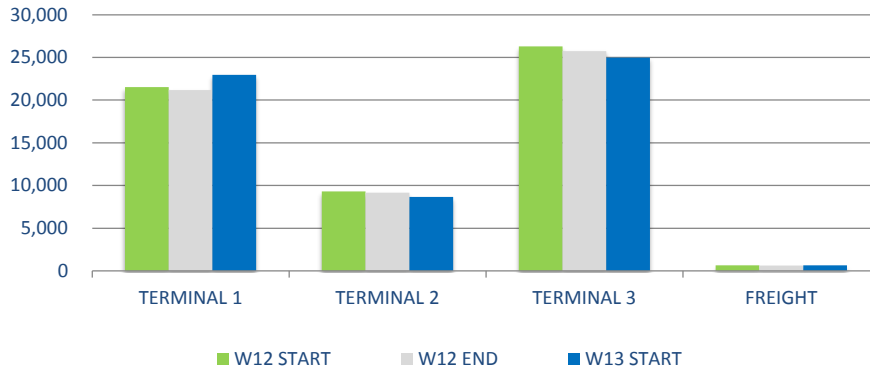
Passengers per 2 Hours (T120)

	ARRS	DEPS
TERMINAL 1		4500
TERMINAL 2		3500
TERMINAL 3		2350

Other Restrictions (ie. Closure periods etc)

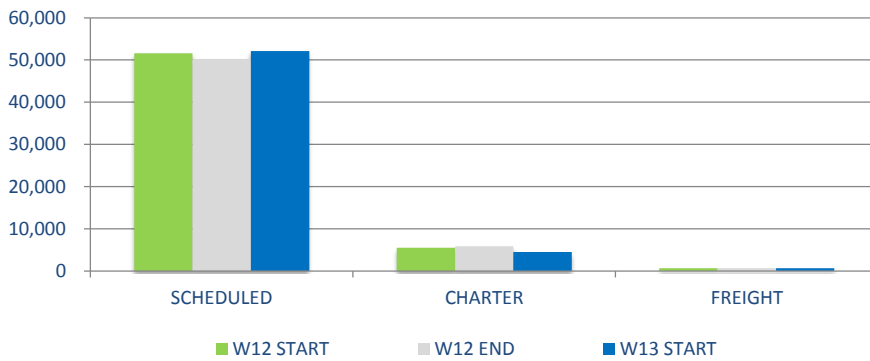
None

AIR TRANSPORT MOVEMENTS BY TERMINAL



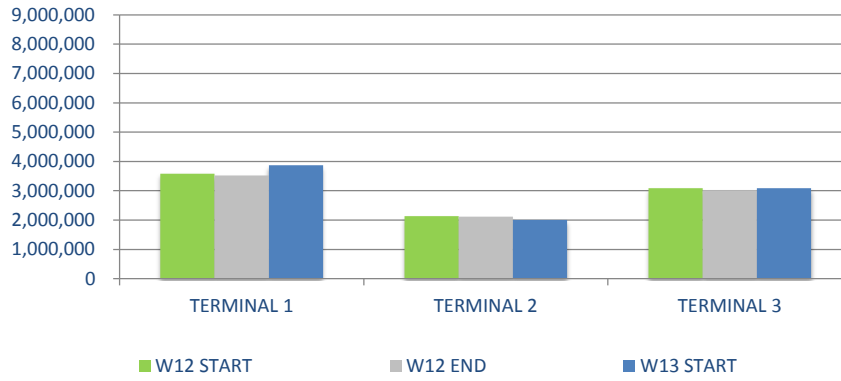
	W12 START	W12 END	W13 START	% W12 START - W13 START	% W12 END - W13 START
TERMINAL 1	21,528	21,178	22,962	6.2%	7.8%
TERMINAL 2	9,301	9,145	8,656	-7.5%	-5.6%
TERMINAL 3	26,303	25,731	24,974	-5.3%	-3.0%
FREIGHT	657	622	643	-2.2%	3.3%
TOTAL	57,789	56,676	57,235	-1.0%	1.0%

AIR TRANSPORT MOVEMENTS BY SERVICE TYPE



	W12 START	W12 END	W13 START	% W12 START - W13 START	% W12 END - W13 START
SCHEDULED	51,612	50,226	52,109	1.0%	3.6%
CHARTER	5,520	5,828	4,483	-23.1%	-30.0%
FREIGHT	657	622	643	-2.2%	3.3%
TOTAL	57,789	56,676	57,235	-1.0%	1.0%

TOTAL SEATS BY TERMINAL



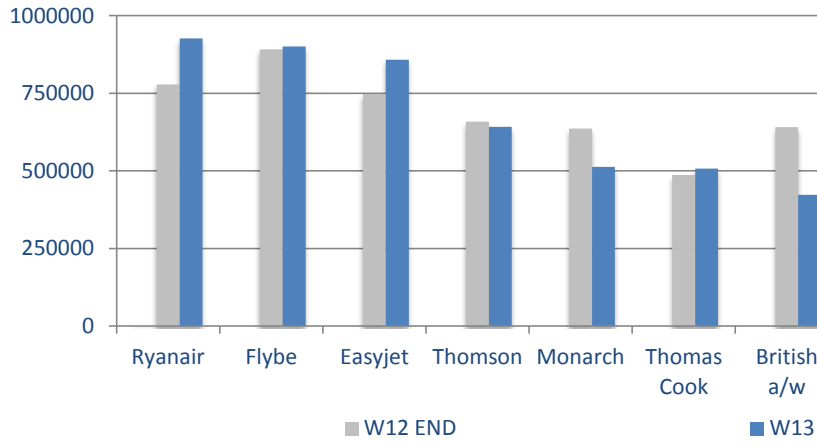
	W12 START	W12 END	W13 START	% W12 START - W13 START	% W12 END - W13 START
TERMINAL 1	3,584,196	3,522,380	3,868,029	7.9%	9.8%
TERMINAL 2	2,135,257	2,114,492	2,008,750	-5.9%	-5.0%
TERMINAL 3	3,090,463	3,021,048	3,086,325	-0.1%	2.2%
TOTAL	8,809,916	8,657,920	8,963,104	1.7%	3.5%

SEATS PER PASSENGER BY ATM



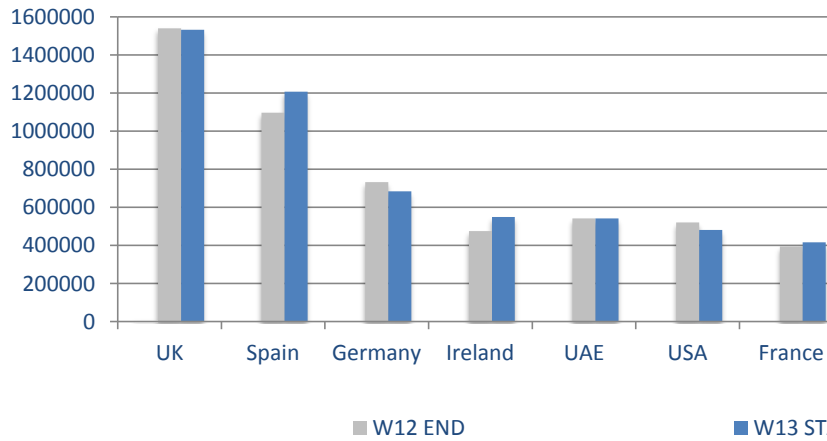
	W12 START	W12 END	W13 START	% W12 START - W13 START	% W12 END - W13 START
TERMINAL 1	166	166	168	1.2%	1.3%
TERMINAL 2	230	231	232	1.1%	0.4%
TERMINAL 3	117	117	124	5.2%	5.3%
AVERAGE	154	154	158	2.7%	2.5%

TOP 10 CARRIERS SEATS BY OPERATOR S13



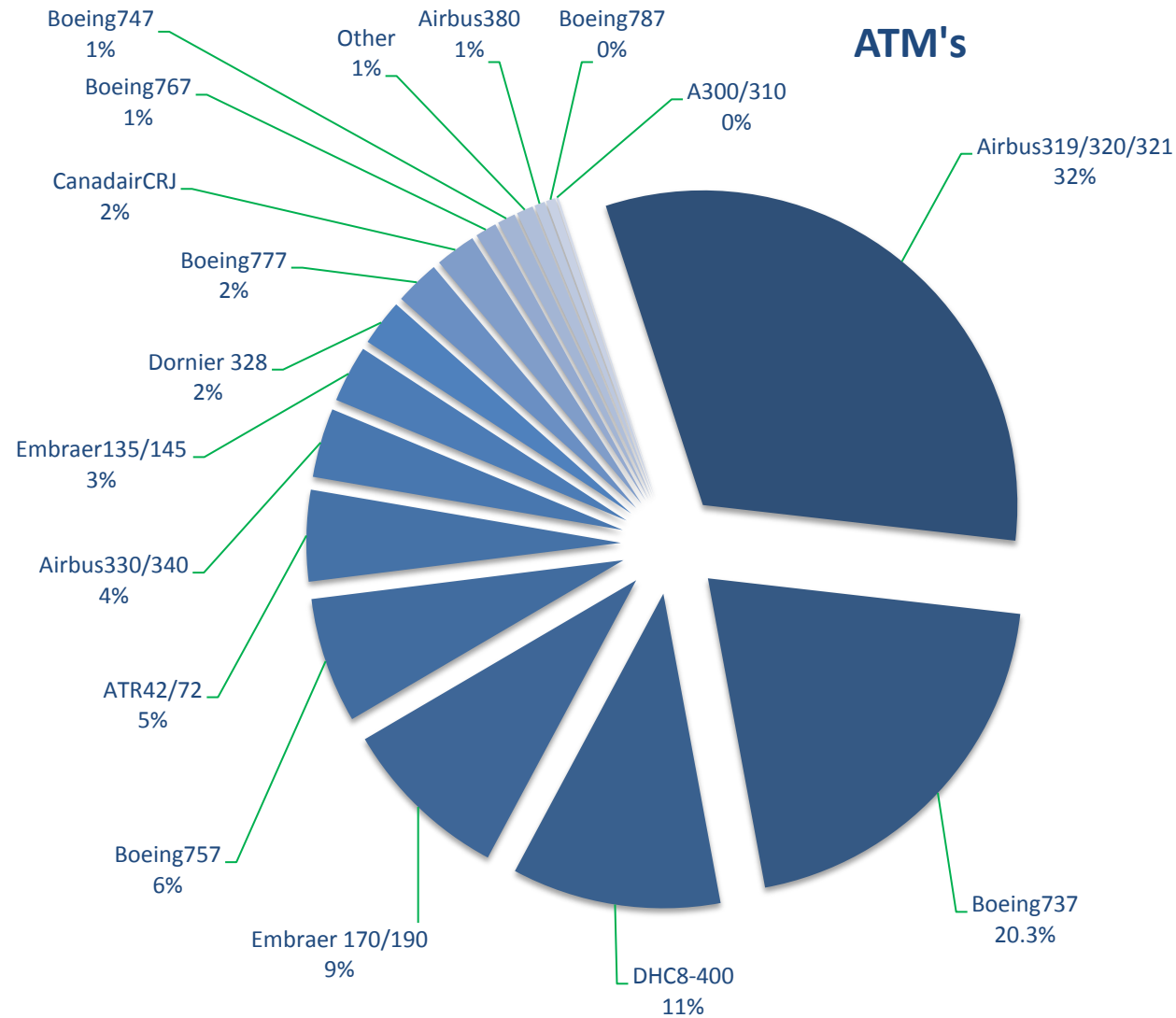
	W12 END	W13 START	% W12 END - W13START
Ryanair	778491	926478	19.0%
Flybe	891505	900940	1.1%
Easyjet	747451	858336	14.8%
Thomson	658290	641933	-2.5%
Monarch	636440	512848	-19.4%
Thomas Cook	486507	507279	4.3%
British a/w	640503	422900	-34.0%
Virgin Atlantic	208558	394976	89.4%
Jet2	297232	393870	32.5%
Lufthansa	428,740	388,842	-9.3%

TOP 10 SEATS BY DESTINATION COUNTRY S13



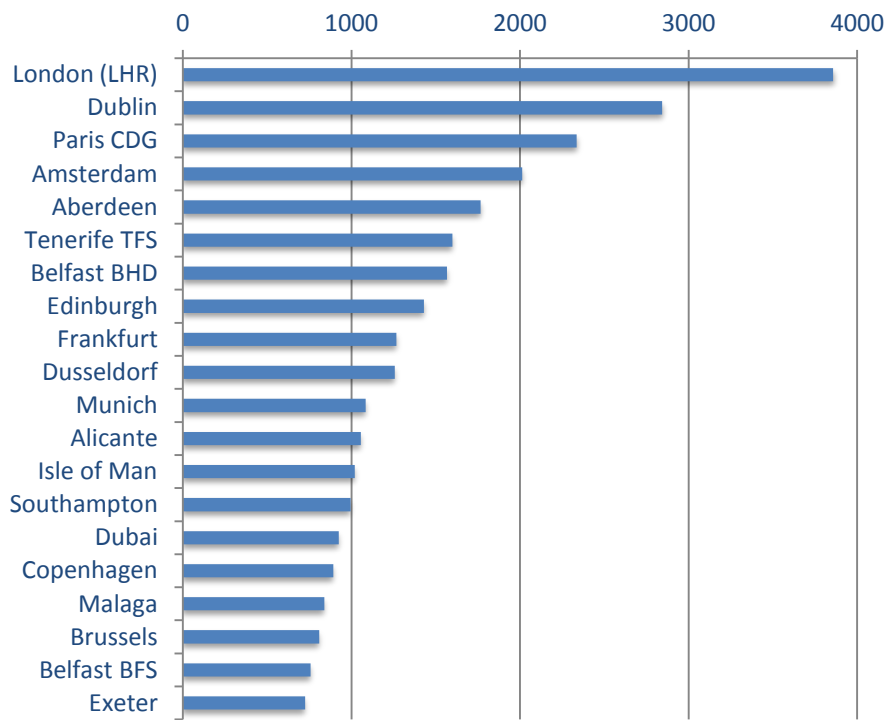
	W12 END	W13 START	% W12 END - W13START
UK	1539755	1532376	-0.5%
Spain	1097659	1208118	10.1%
Germany	732590	683698	-6.7%
Ireland	475458	549546	15.6%
UAE	542388	542388	0.0%
USA	520108	481588	-7.4%
France	395246	416219	5.3%
Netherlands	308902	331792	7.4%
Italy	229146	235879	2.9%
Czech	252809	235632	-6.8%

AIR TRANSPORT MOVEMENTS BY AIRCRAFT TYPE



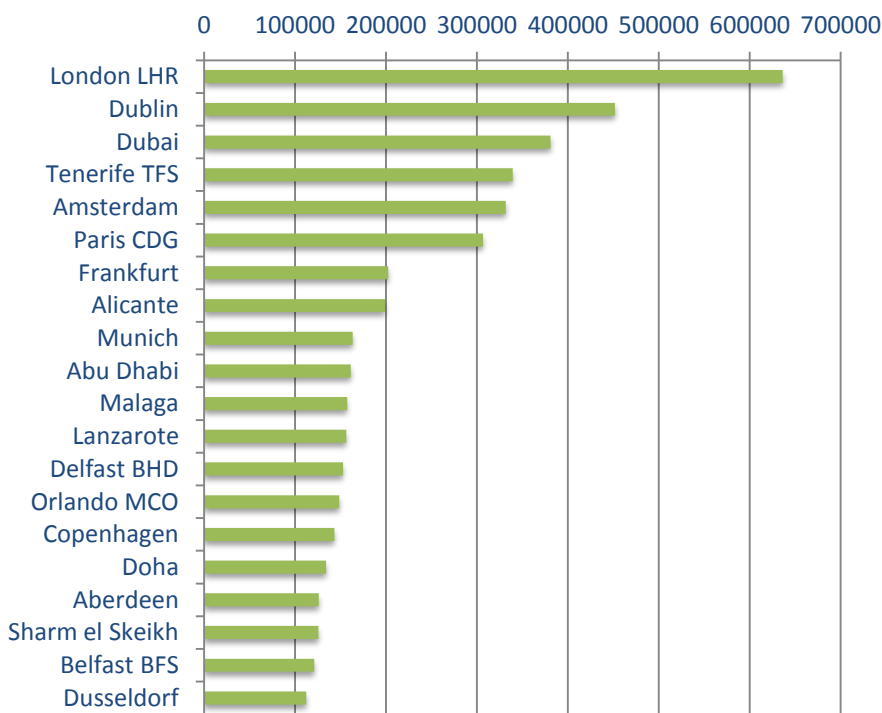
Aircraft	ATM's
Airbus319/320/321	18206
Boeing737	11606
DHC8-400	6145
Embraer 170/190	5005
Boeing757	3695
ATR42/72	2680
Airbus330/340	2036
Embraer135/145	1673
Dornier 328	1366
Boeing777	1321
CanadairCRJ	1195
Boeing767	631
Boeing747	532
Other	490
Airbus380	308
Boeing787	275
A300/310	71
Total	57235

AIR TRANSPORT MOVEMENTS BY DESTINATION W13



DESTINATION	ATM'S
London (LHR)	3857
Dublin	2843
Paris CDG	2336
Amsterdam	2012
Aberdeen	1766
Tenerife TFS	1598
Belfast BHD	1566
Edinburgh	1430
Frankfurt	1267
Dusseldorf	1256
Munich	1084
Alicante	1055
Isle of Man	1020
Southampton	994
Dubai	924
Copenhagen	892
Malaga	838
Brussels	808
Belfast BFS	758
Exeter	724

SEATS BY DESTINATION W13



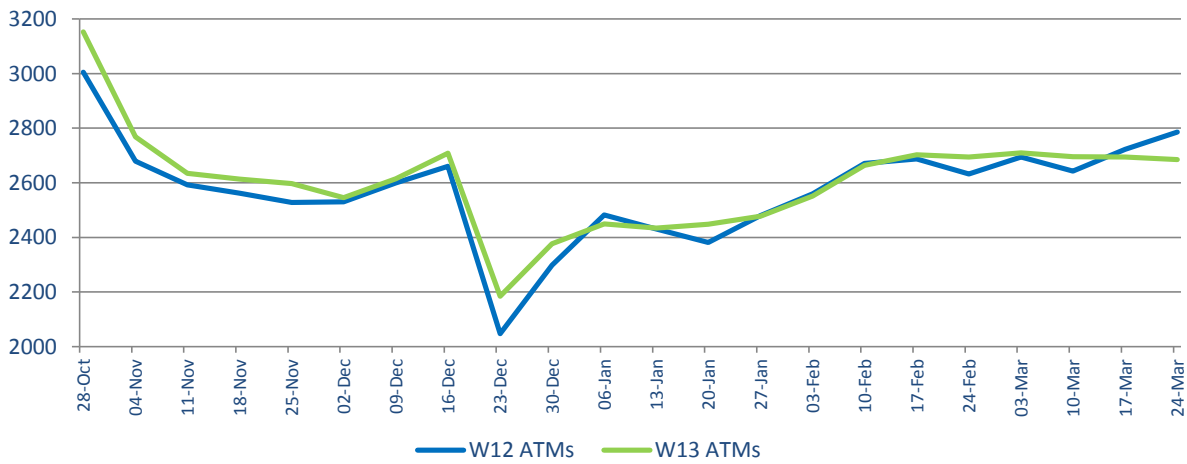
DESTINATION	SEATS
London LHR	636008
Dublin	451744
Dubai	380996
Tenerife TFS	339325
Amsterdam	331792
Paris CDG	306554
Frankfurt	202450
Alicante	198821
Munich	163454
Abu Dhabi	161392
Malaga	157197
Lanzarote	156212
Delfast BHD	152688
Orlando MCO	148655
Copenhagen	143166
Doha	134200
Aberdeen	126140
Sharm el Skeikh	125818
Belfast BFS	121224
Dusseldorf	112470

AIR TRANSPORT MOVEMENTS AND SEATS BY WEEK

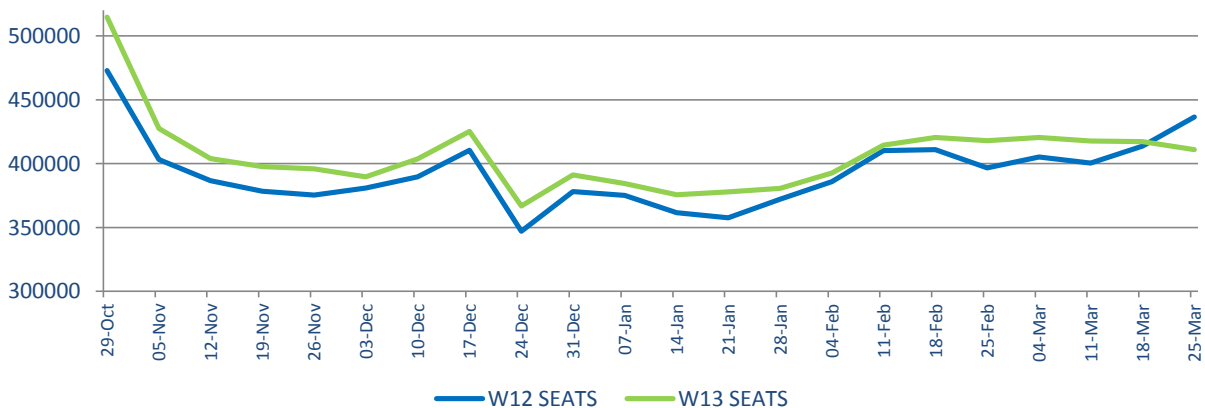
Last week of season is 6days within season but for purposes of this report the data has been extrapolated to 7days.

W12 END			W13 START OF SEASON			Change	
WEEK	W12 ATMs	W12 SEATS	WEEK	W13 ATMs	W13 SEATS	ATMs	Seats
29-Oct	3005	472825	28-Oct	3153	514637	4.9%	8.8%
05-Nov	2679	403290	04-Nov	2768	427545	3.3%	6.0%
12-Nov	2593	386536	11-Nov	2635	403862	1.6%	4.5%
19-Nov	2562	378431	18-Nov	2613	397780	2.0%	5.1%
26-Nov	2528	375253	25-Nov	2597	395903	2.7%	5.5%
03-Dec	2530	380870	02-Dec	2546	389701	0.6%	2.3%
10-Dec	2599	389600	09-Dec	2615	403713	0.6%	3.6%
17-Dec	2660	410462	16-Dec	2709	425246	1.8%	3.6%
24-Dec	2047	346970	23-Dec	2185	366829	6.7%	5.7%
31-Dec	2298	378147	30-Dec	2377	391067	3.4%	3.4%
07-Jan	2482	375163	06-Jan	2450	384470	-1.3%	2.5%
14-Jan	2431	361664	13-Jan	2434	375614	0.1%	3.9%
21-Jan	2381	357562	20-Jan	2448	377850	2.8%	5.7%
28-Jan	2480	372036	27-Jan	2478	380622	-0.1%	2.3%
04-Feb	2560	385890	03-Feb	2551	392740	-0.4%	1.8%
11-Feb	2671	410169	10-Feb	2664	414498	-0.3%	1.1%
18-Feb	2687	410852	17-Feb	2703	420517	0.6%	2.4%
25-Feb	2632	396629	24-Feb	2695	417887	2.4%	5.4%
04-Mar	2694	405164	03-Mar	2710	420338	0.6%	3.7%
11-Mar	2643	400386	10-Mar	2696	417610	2.0%	4.3%
18-Mar	2723	413717	17-Mar	2695	417073	-1.0%	0.8%
25-Mar	2786	436377	24-Mar	2685	411004	-3.6%	-5.8%

Air Transport Movements by Week

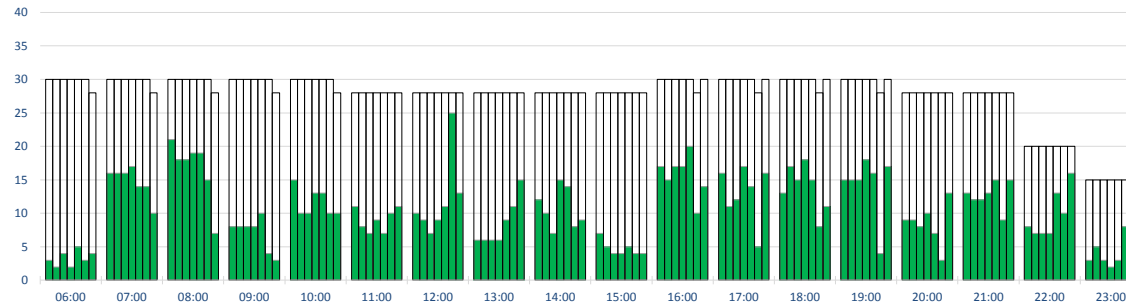


Seats by Week



RUNWAY MOVEMENT - ARRIVALS

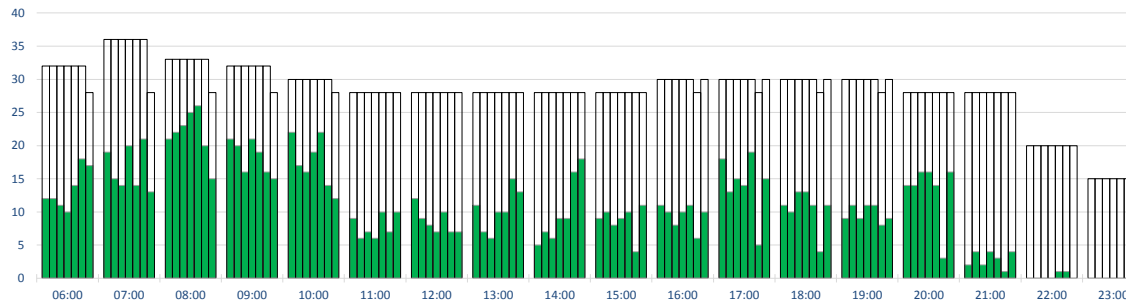
Peak Week Movements per Hour - All times UTC



	CAPACITY							ALLOCATED						
	Mon	Tue	Wed	Thu	Fri	Sat	Sun	Mon	Tue	Wed	Thu	Fri	Sat	Sun
06:00	30	30	30	30	30	30	28	3	2	4	2	5	3	4
07:00	30	30	30	30	30	30	28	16	16	16	17	14	14	10
08:00	30	30	30	30	30	30	28	21	18	18	19	19	15	7
09:00	30	30	30	30	30	30	28	8	8	8	8	10	4	3
10:00	30	30	30	30	30	30	28	15	10	10	13	13	10	10
11:00	28	28	28	28	28	28	28	11	8	7	9	7	10	11
12:00	28	28	28	28	28	28	28	10	9	7	9	11	25	13
13:00	28	28	28	28	28	28	28	6	6	6	6	9	11	15
14:00	28	28	28	28	28	28	28	12	10	7	15	14	8	9
15:00	28	28	28	28	28	28	28	7	5	4	4	5	4	4
16:00	30	30	30	30	30	30	28	17	15	17	17	20	10	14
17:00	30	30	30	30	30	30	28	16	11	12	17	14	5	16
18:00	30	30	30	30	30	30	28	13	17	15	18	15	8	11
19:00	30	30	30	30	30	30	28	15	15	15	18	16	4	17
20:00	28	28	28	28	28	28	28	9	9	8	10	7	3	13
21:00	28	28	28	28	28	28	28	13	12	12	13	15	9	15
22:00	20	20	20	20	20	20	20	8	7	7	7	13	10	16
23:00	15	15	15	15	15	15	15	3	5	3	2	3	8	5

RUNWAY MOVEMENT - DEPARTURES

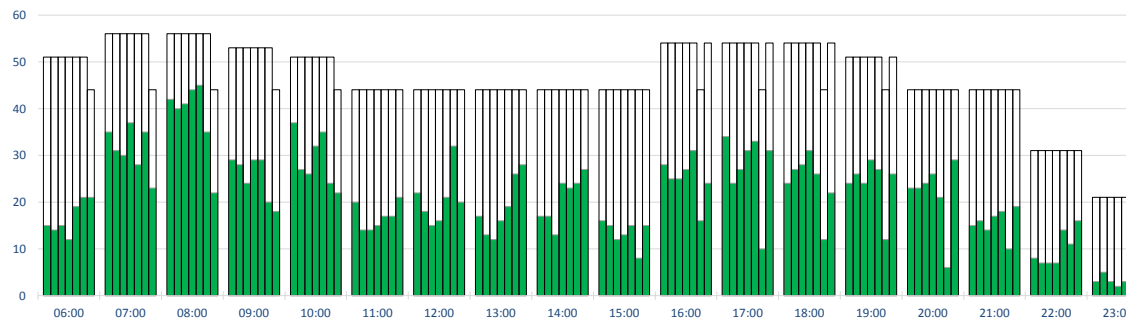
Peak Week Movements per Hour - All times UTC



	CAPACITY							ALLOCATED						
	Mon	Tue	Wed	Thu	Fri	Sat	Sun	Mon	Tue	Wed	Thu	Fri	Sat	Sun
06:00	32	32	32	32	32	32	28	12	12	11	10	14	18	17
07:00	36	36	36	36	36	36	28	19	15	14	20	14	21	13
08:00	33	33	33	33	33	33	28	21	22	23	25	26	20	15
09:00	32	32	32	32	32	32	28	21	20	16	21	19	16	15
10:00	30	30	30	30	30	30	28	22	17	16	19	22	14	12
11:00	28	28	28	28	28	28	28	9	6	7	6	10	7	10
12:00	28	28	28	28	28	28	28	12	9	8	7	10	7	7
13:00	28	28	28	28	28	28	28	11	7	6	10	10	15	13
14:00	28	28	28	28	28	28	28	5	7	6	9	9	16	18
15:00	28	28	28	28	28	28	28	9	10	8	9	10	4	11
16:00	30	30	30	30	30	30	28	11	10	8	10	11	6	10
17:00	30	30	30	30	30	30	28	18	13	15	14	19	5	15
18:00	30	30	30	30	30	30	28	11	10	13	11	4	11	9
19:00	30	30	30	30	30	30	28	9	11	9	11	11	8	9
20:00	28	28	28	28	28	28	28	14	14	16	16	14	3	16
21:00	28	28	28	28	28	28	28	2	4	2	4	3	1	4
22:00	20	20	20	20	20	20	20						1	1
23:00	15	15	15	15	15	15	15							

RUNWAY MOVEMENT - TOTALS

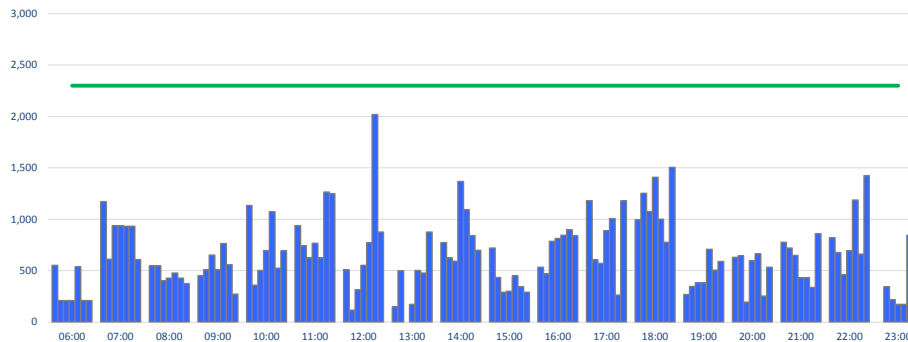
Peak Week Movements per Hour - All times UTC



	CAPACITY							ALLOCATED						
	Mon	Tue	Wed	Thu	Fri	Sat	Sun	Mon	Tue	Wed	Thu	Fri	Sat	Sun
06:00	51	51	51	51	51	51	44	15	14	15	12	19	21	21
07:00	56	56	56	56	56	56	44	35	31	30	37	28	35	23
08:00	56	56	56	56	56	56	44	42	40	41	44	45	35	22
09:00	53	53	53	53	53	53	44	29	28	24	29	29	20	18
10:00	51	51	51	51	51	51	44	37	27	26	32	35	24	22
11:00	44	44	44	44	44	44	44	20	14	14	15	17	17	21
12:00	44	44	44	44	44	44	44	22	18	15	16	21	32	20
13:00	44	44	44	44	44	44	44	17	13	12	16	19	26	28
14:00	44	44	44	44	44	44	44	17	17	13	24	23	24	27
15:00	44	44	44	44	44	44	44	16	15	12	13	15	8	15
16:00	54	54	54	54	54	54	44	28	25	25	27	31	16	24
17:00	54	54	54	54	54	54	44	34	24	27	31	33	10	31
18:00	54	54	54	54	54	54	44	24	27	28	31	26	12	22
19:00	51	51	51	51	51	51	44	24	26	24	29	27	12	26
20:00	44	44	44	44	44	44	44	23	23	24	26	21	6	29
21:00	44	44	44	44	44	44	44	15	16	14	17	18	10	19
22:00	31	31	31	31	31	31	31	8	7	7	7	14	11	16
23:00	21	21	21	21	21	21	21	3	5	3	2	3	8	5

TERMINAL 1 - ARRIVALS

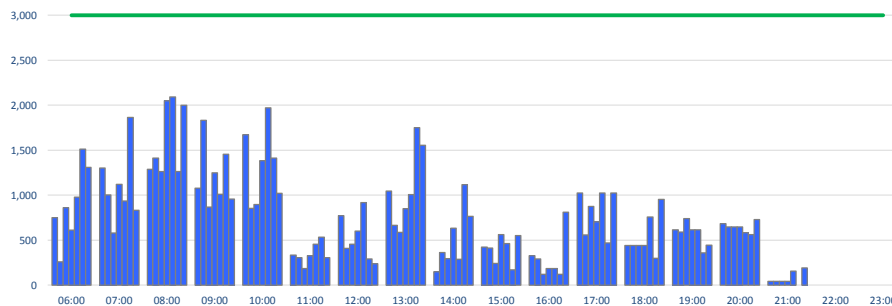
Peak Week Passengers per Hour - All times UTC



	ALLOCATED							Capacity
	Mon	Tue	Wed	Thu	Fri	Sat	Sun	Limit
06:00	552	210	210	210	535	210	210	2300
07:00	1172	611	936	936	932	932	609	2300
08:00	544	544	401	427	476	427	373	2300
09:00	452	509	652	509	764	558	271	2300
10:00	1133	360	503	695	1071	523	693	2300
11:00	939	741	622	768	622	1266	1248	2300
12:00	509	115	315	552	772	2019	876	2300
13:00	148	498		171	503	476	875	2300
14:00	773	623	593	1368	1094	843	697	2300
15:00	721	432	291	300	448	343	291	2300
16:00	532	467	786	814	844	899	838	2300
17:00	1181	604	572	889	1008	261	1179	2300
18:00	993	1254	1075	1409	1001	775	1504	2300
19:00	267	346	381	381	707	506	589	2300
20:00	630	646	195	595	664	254	533	2300
21:00	775	720	648	431	431	337	859	2300
22:00	821	676	461	696	1186	662	1425	2300
23:00		342	220	171	171	845	171	2300

TERMINAL 1 - DEPARTURES

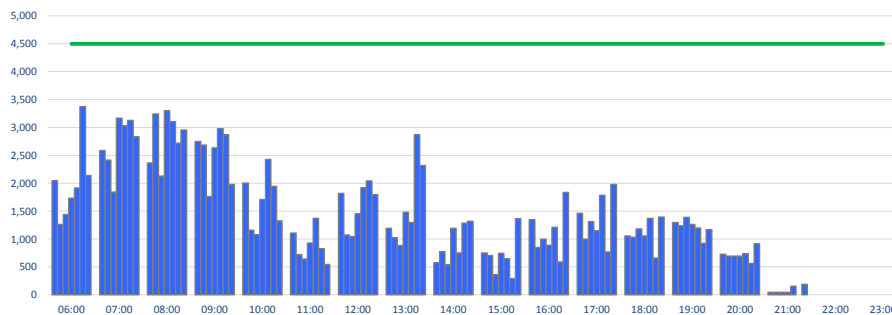
Peak Week Passengers per Hour - All times UTC



	ALLOCATED							Capacity
	Mon	Tue	Wed	Thu	Fri	Sat	Sun	Limit
06:00	749	259	862	610	978	1512	1310	3000
07:00	1301	1003	578	1120	936	1864	832	3000
08:00	1288	1412	1262	2048	2092	1264	1999	3000
09:00	1076	1832	867	1248	1009	1455	956	3000
10:00	1670	853	895	1383	1969	1411	1020	3000
11:00	334	307	185	326	456	533	307	3000
12:00	773	410	456	601	916	291	239	3000
13:00	1045	664	585	848	1006	1751	1554	3000
14:00	148	363	296	634	289	1115	765	3000
15:00	422	413	242	561	462	171	552	3000
16:00	326	291	120	185	185	120	812	3000
17:00	1024	557	876	705	1024	470	1024	3000
18:00	439	439	439	439	758	299	952	3000
19:00	614	591	740	614	614	359	443	3000
20:00	684	648	648	648	583	563	728	3000
21:00	43	43	43	43	156		191	3000
22:00								3000
23:00								3000

TERMINAL 1 - DEPARTURES (2HOUR ROLLING CONSTRAINT)

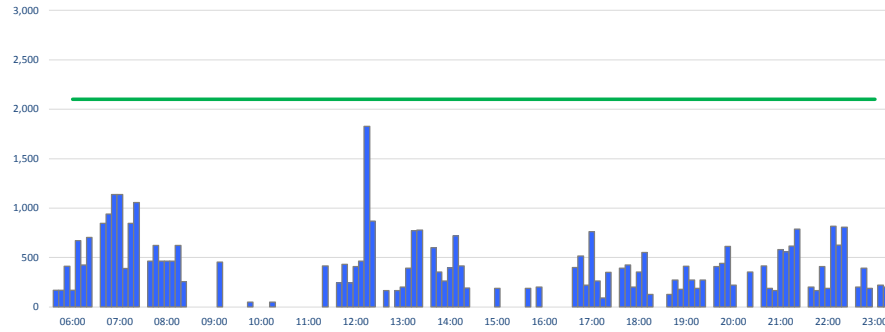
Peak Week Passengers per 2Hour - All times UTC



	DEMAND							Capacity
	Mon	Tue	Wed	Thu	Fri	Sat	Sun	Limit
06:00	2050	1262	1440	1730	1914	3376	2142	4500
07:00	2589	2415	1840	3168	3028	3128	2831	4500
08:00	2364	3244	2129	3296	3101	2719	2955	4500
09:00	2746	2685	1762	2631	2978	2866	1976	4500
10:00	2004	1160	1080	1709	2425	1944	1327	4500
11:00	1107	717	641	927	1372	824	546	4500
12:00	1818	1074	1041	1449	1922	2042	1793	4500
13:00	1193	1027	881	1482	1295	2866	2319	4500
14:00	570	776	538	1195	751	1286	1317	4500
15:00	748	704	362	746	647	291	1364	4500
16:00	1350	848	996	890	1209	590	1836	4500
17:00	1463	996	1315	1144	1782	769	1976	4500
18:00	1053	1030	1179	1053	1372	658	1395	4500
19:00	1298	1239	1388	1262	1197	922	1171	4500
20:00	727	691	691	691	739	563	919	4500
21:00	43	43	43	43	156		191	4500
22:00								4500
23:00								4500

TERMINAL 2 - ARRIVALS

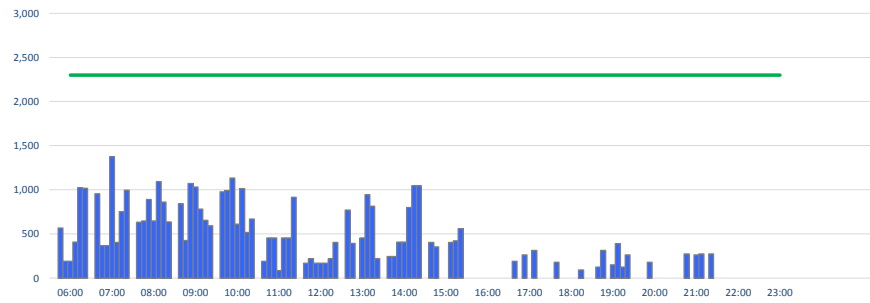
Peak Week Passengers per Hour - All times UTC



	ALLOCATED							Capacity Limit
	Mon	Tue	Wed	Thu	Fri	Sat	Sun	
06:00	169	169	413	169	671	427	704	2100
07:00	846	940	1137	1137	391	846	1057	2100
08:00	465	622	465	465	465	622	258	2100
09:00					455			2100
10:00	50					50		2100
11:00							417	2100
12:00	244	433	244	409	465	1828	868	2100
13:00	165	165	203	392	771	778		2100
14:00	600	354	263	397	720	415	194	2100
15:00					189			2100
16:00	189		203					2100
17:00	401	517	221	761	263	91	350	2100
18:00	392	424	203	354	551	127		2100
19:00	127	274	180	411	274	189	274	2100
20:00	410	442	613	221				2100
21:00	415	189	165	580	557	618	789	2100
22:00	203	165	410	189	817	627	807	2100
23:00	203	392	189		221	203	424	2100

TERMINAL 2 - DEPARTURES

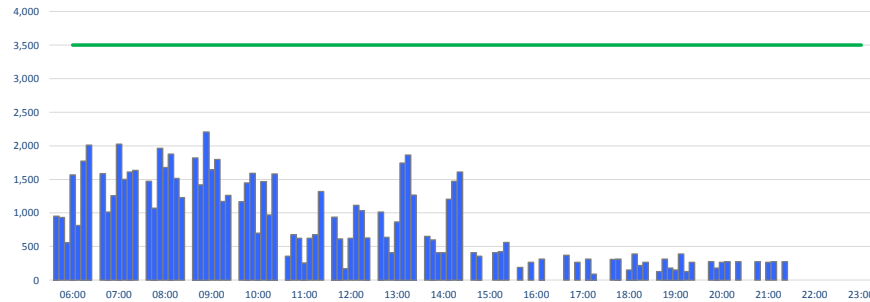
Peak Week Passengers per Hour - All times UTC



	ALLOCATED							Capacity Limit
	Mon	Tue	Wed	Thu	Fri	Sat	Sun	
06:00		567	189	189	410	1023	1016	2300
07:00	954	368	368	1378	406	751	997	2300
08:00	632	646	890	646	1093	860	635	2300
09:00	842	427	1072	1031	783	654	594	2300
10:00	977	991	1134	613	1014	516	668	2300
11:00	189	455	455	87	455	455	915	2300
12:00	169	219	169	169	169	219	406	2300
13:00	770	392	169	455	943	816	221	2300
14:00	244	244	409	409	801	1046	1046	2300
15:00	406	354			406	424	562	2300
16:00								2300
17:00	189		263		314			2300
18:00	180					91		2300
19:00	127	314		151	390	127	263	2300
20:00			180					2300
21:00		274		263	274		274	2300
22:00								2300
23:00								2300

TERMINAL 2 - DEPARTURES (2HOUR ROLLING CONSTRAINT)

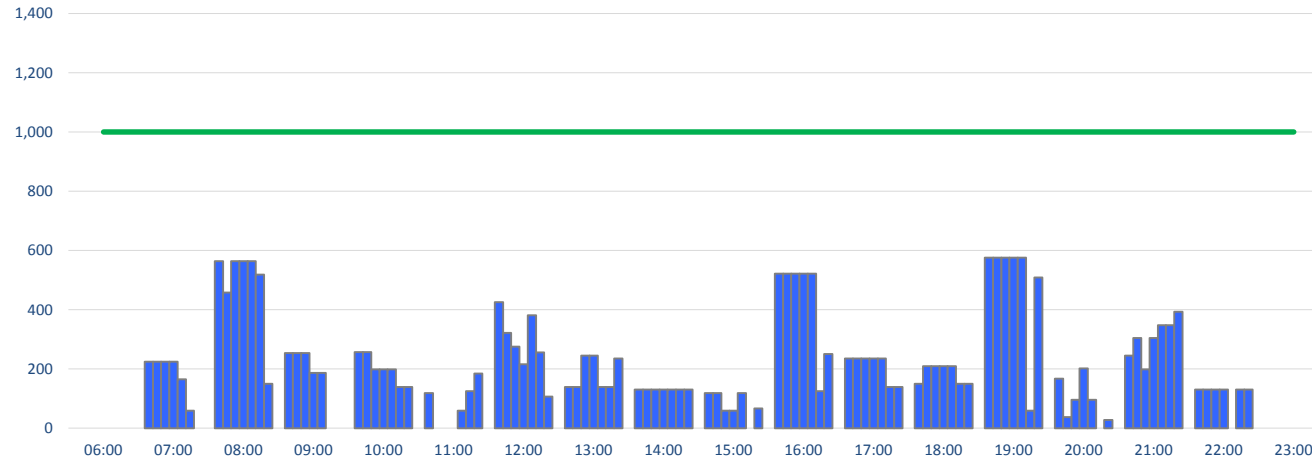
Peak Week Passengers per 2Hour - All times UTC



	ALLOCATED							Capacity Limit
	Mon	Tue	Wed	Thu	Fri	Sat	Sun	
06:00	954	935	557	1567	816	1774	2013	3500
07:00	1586	1014	1258	2024	1499	1611	1632	3500
08:00	1474	1073	1962	1677	1876	1514	1229	3500
09:00	1819	1418	2206	1644	1797	1170	1262	3500
10:00	1166	1446	1589	700	1469	971	1583	3500
11:00	358	674	624	256	624	674	1321	3500
12:00	939	611	169	624	1112	1035	627	3500
13:00	1014	636	409	864	1744	1862	1267	3500
14:00	650	598	409	409	1207	1470	1608	3500
15:00	406	354			406	424	562	3500
16:00	189		263		314			3500
17:00	369		263	0	314	91	0	3500
18:00	307	314		151	390	218	263	3500
19:00	127	314	180	151	390	127	263	3500
20:00		274	180	263	274		274	3500
21:00		274		263	274		274	3500
22:00								3500
23:00								3500

TERMINAL 3 - DOMESTIC ARRIVALS

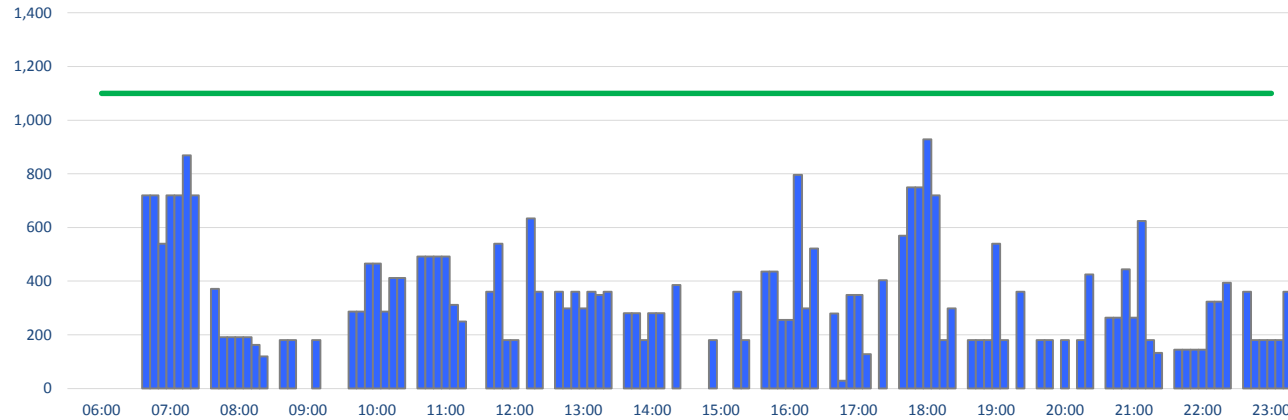
Peak Week Passengers per Hour - All times UTC



	ALLOCATED							Capacity Limit
	Mon	Tue	Wed	Thu	Fri	Sat	Sun	
06:00								1000
07:00	224	224	224	224	165	59		1000
08:00	564	458	564	564	564	518	150	1000
09:00	253	253	253	187	187			1000
10:00	257	257	198	198	198	139	139	1000
11:00	118				59	125	184	1000
12:00	425	322	275	216	381	256	106	1000
13:00	139	139	245	245	139	139	235	1000
14:00	130	130	130	130	130	130		1000
15:00	118	118	59	59	118		66	1000
16:00	522	522	522	522	522	125	250	1000
17:00	235	235	235	235	235	139	139	1000
18:00	150	209	209	209	209	150	150	1000
19:00	576	576	576	576	576	59	509	1000
20:00	167	37	96	202	96		28	1000
21:00	245	304	198	304	348	348	393	1000
22:00	130	130	130	130		130	130	1000
23:00								1000

TERMINAL 3 - INTERNATIONAL ARRIVALS

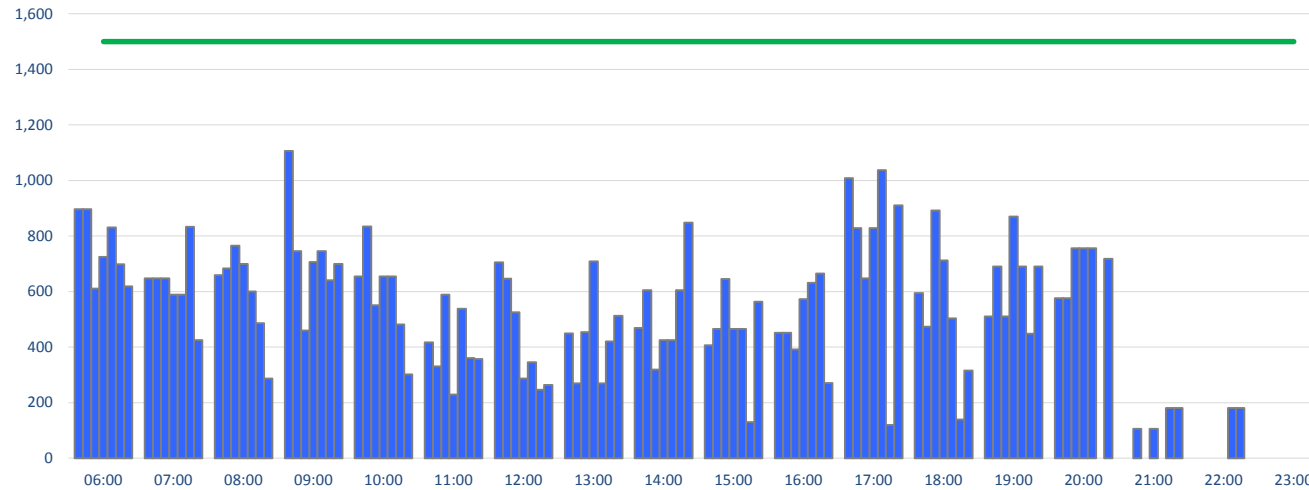
Peak Week Passengers per Hour - All times UTC



	ALLOCATED							Capacity Limit
	Mon	Tue	Wed	Thu	Fri	Sat	Sun	
06:00								1100
07:00	720	720	540	720	720	869	720	1100
08:00	371	191	191	191	191	162	119	1100
09:00	180	180			180			1100
10:00	286	286	466	466	286	412	412	1100
11:00	492	492	492	492	312	250		1100
12:00	360	540	180	180		634	360	1100
13:00	361	299	361	299	361	348	361	1100
14:00	281	281	180	281	281		386	1100
15:00			180			360	180	1100
16:00	436	436	256	256	796	299	522	1100
17:00	279	29	349	349	128		404	1100
18:00	569	749	749	929	720	180	298	1100
19:00	180	180	180	540	180		360	1100
20:00	180	180		180		180	425	1100
21:00	264	264	444	264	624	180	132	1100
22:00	144	144	144	144	324	324	394	1100
23:00	360	180	180	180	180	360	360	1100

TERMINAL 3 - DEPARTURES

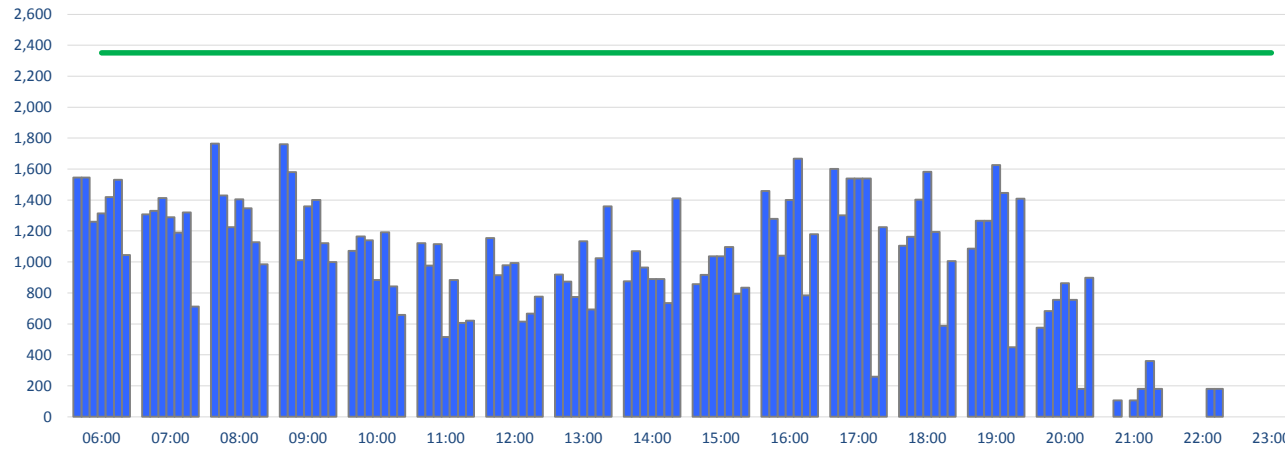
Peak Week Passengers per Hour - All times UTC



	ALLOCATED							Capacity Limit
	Mon	Tue	Wed	Thu	Fri	Sat	Sun	
06:00	897	897	611	725	831	698	619	1500
07:00	648	648	648	589	589	833	425	1500
08:00	659	683	765	699	600	486	286	1500
09:00	1106	746	460	706	746	641	699	1500
10:00	654	834	551	654	654	481	301	1500
11:00	417	330	589	229	538	360	357	1500
12:00	705	646	525	286	345	246	263	1500
13:00	449	269	454	708	269	420	512	1500
14:00	469	605	319	425	425	605	848	1500
15:00	406	465	645	465	465	130	563	1500
16:00	451	451	392	572	631	665	270	1500
17:00	1008	828	648	828	1037	119	910	1500
18:00	594	473	892	712	503	139	315	1500
19:00	510	690	510	870	690	448	690	1500
20:00	576	576	756	756	756		718	1500
21:00		106		106			180	1500
22:00					180	180		1500
23:00								1500

TERMINAL 3 - DEPARTURES (2HOUR ROLLING CONSTRAINT)

Peak Week Passengers per 2Hour - All times UTC



	ALLOCATED							Capacity Limit
	Mon	Tue	Wed	Thu	Fri	Sat	Sun	
06:00	1545	1545	1259	1314	1420	1531	1044	2350
07:00	1307	1331	1413	1288	1189	1319	711	2350
08:00	1765	1429	1225	1405	1346	1127	985	2350
09:00	1760	1580	1011	1360	1400	1122	1000	2350
10:00	1071	1164	1140	883	1192	841	658	2350
11:00	1122	976	1114	515	883	606	620	2350
12:00	1154	915	979	994	614	666	775	2350
13:00	918	874	773	1133	694	1025	1360	2350
14:00	875	1070	964	890	890	735	1411	2350
15:00	857	916	1037	1037	1096	795	833	2350
16:00	1459	1279	1040	1400	1668	784	1180	2350
17:00	1602	1301	1540	1540	1540	258	1225	2350
18:00	1104	1163	1402	1582	1193	587	1005	2350
19:00	1086	1266	1266	1626	1446	448	1408	2350
20:00	576	682	756	862	756	180	898	2350
21:00		106		106	180	360	180	2350
22:00					180	180		2350
23:00								2350

GLOSSARY OF TERMS

Air Transport Movement (ATM)	A scheduled or charter passenger or freight aircraft movement. Positioning flights and General/Business Aviation flights are excluded.
Allocation	The allocation of slots such that demand is constrained to fit within declared scheduling limits.
Demand	The unconstrained demand for slots, prior to any schedule adjustments.
Passenger ATM	A scheduled or charter <u>passenger</u> aircraft movement (ie, excluding all-cargo and positioning aircraft movements).
Scheduling Limits	Limiting parameters declared by the Airport Operator used in the coordination process.
Seats	The number of seats based on the aircraft configuration advised by the airline.
Peak Week	The Peak Week for S13 IS W/C 02Sep 2013
Data Snapshot	All data used for this report was as held 22 October 2013

GUIDE TO HISTOGRAMS

The histograms show the pattern of traffic by time of day against the appropriate scheduling limit. Each time period consist of seven columns representing the days-of-week, Monday through Sunday. Passenger histograms reflect agreed load factors.