

QUEENSTOWN INTERNATIONAL AIRPORT

ZQN

S14 Start of Season Report

Key Statistics	S13 Operated	S14 Start of Season	Percentage Change	
Air Transport Movements	6,540	6,936	▲	6%
Total Seats	881,278	986,079	▲	12%
Seats per Passenger ATM	135	142		

Contents	Page
Airline Rank by ATM's and Seats	2
Aircraft Type Rankings by ATM's and Seats	3
Peak Week Departure Frequencies by Carrier	4
Destination Rankings by ATM's and Seats	5
Runway Peak Week Utilisation	6
Domestic Terminal Peak Week Utilisation	7
International Terminal Peak Week Utilisation	8
Total Terminal Peak Week Utilisation	9
Glossary	10

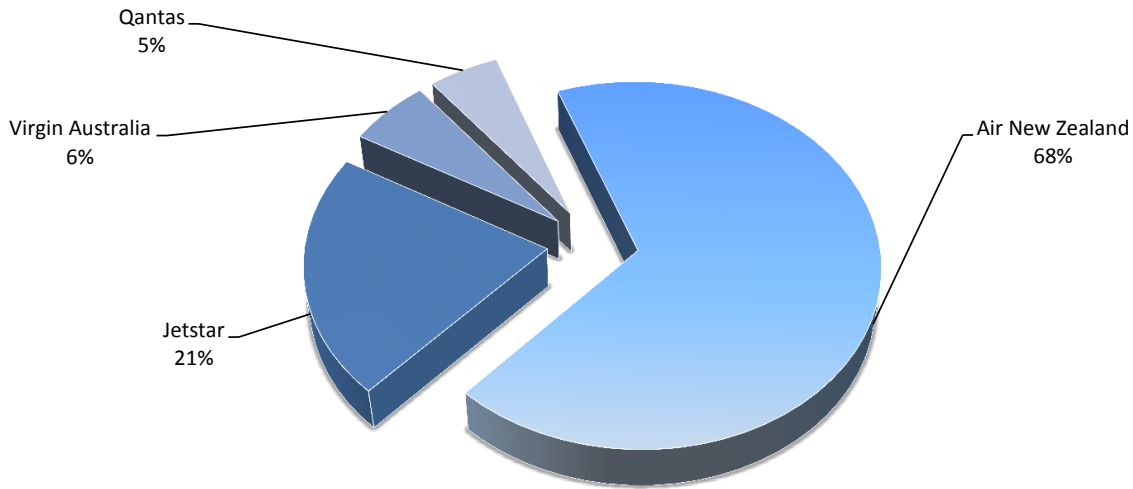
Data in this report is current as of 20 March 2014

No warranty whether expressed or implied as to the completeness, accuracy, fitness for purpose, or satisfactory quality is given by ACL regarding the information in this report, which is provided by third parties. Accordingly, ACL excludes all liability with regard to such data.

The contents of this report may not be reproduced without the written consent of ACL.

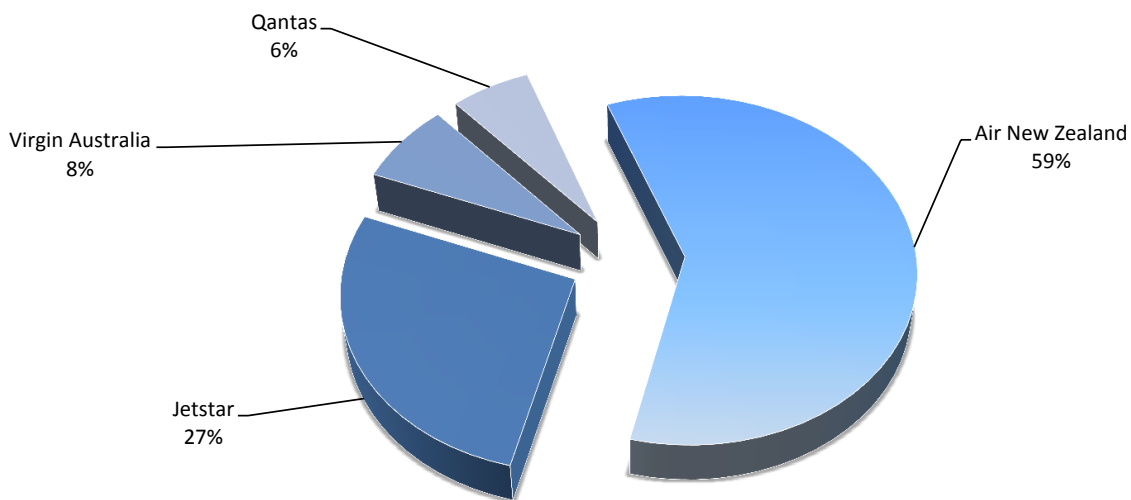
Airlines by Air Transport Movements (ATMs)

Airline	Movements
Air New Zealand	4679
Jetstar	1483
Virgin Australia	418
Qantas	356



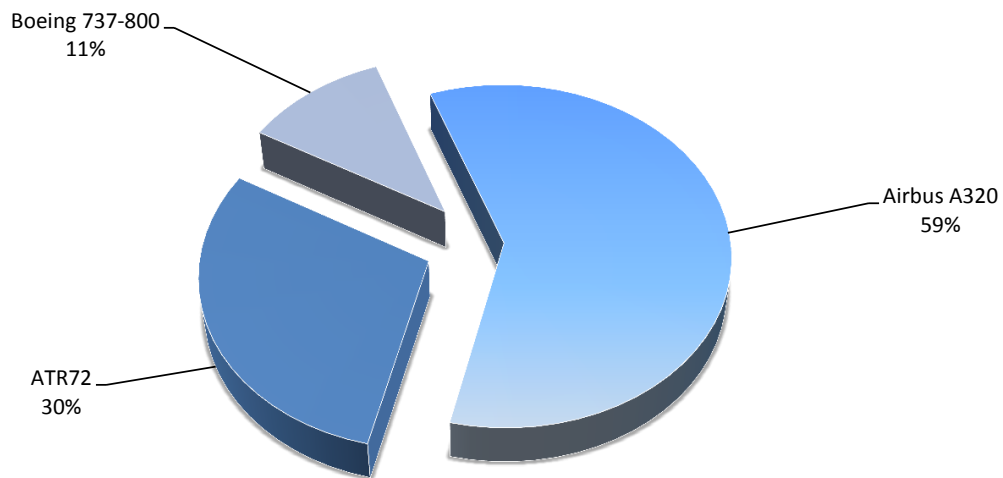
Airlines by Seats

Airline	Seats
Air New Zealand	585763
Jetstar	266940
Virgin Australia	73568
Qantas	59808



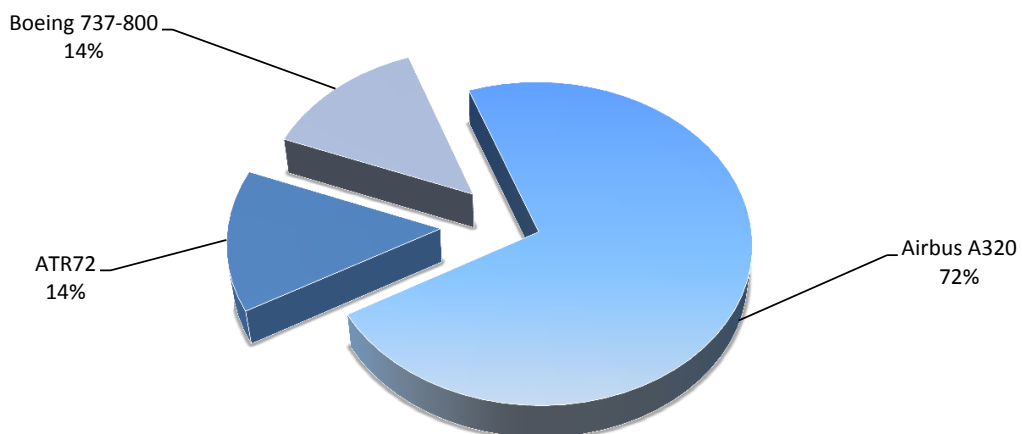
Aircraft Types by Air Transport Movements (ATMs)

Airline	Movements
Airbus A320	4108
ATR72	2054
Boeing 737-800	774



Aircraft Types by Seats

Airline	Seats
Airbus A320	713031
ATR72	139672
Boeing 737-800	133,376

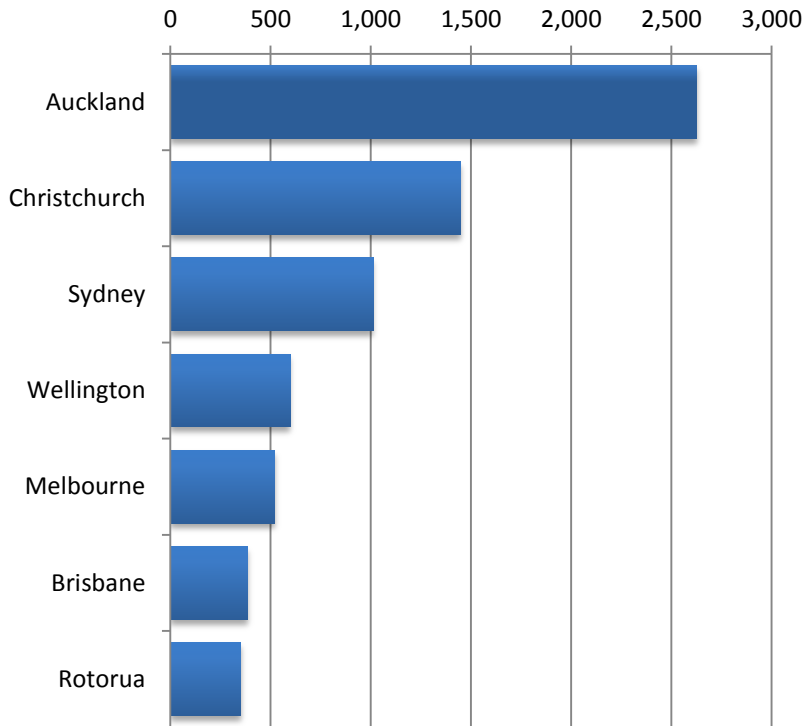


Queenstown International Airport

Peak Week 14 to 20 July Departure Frequencies - By Carrier

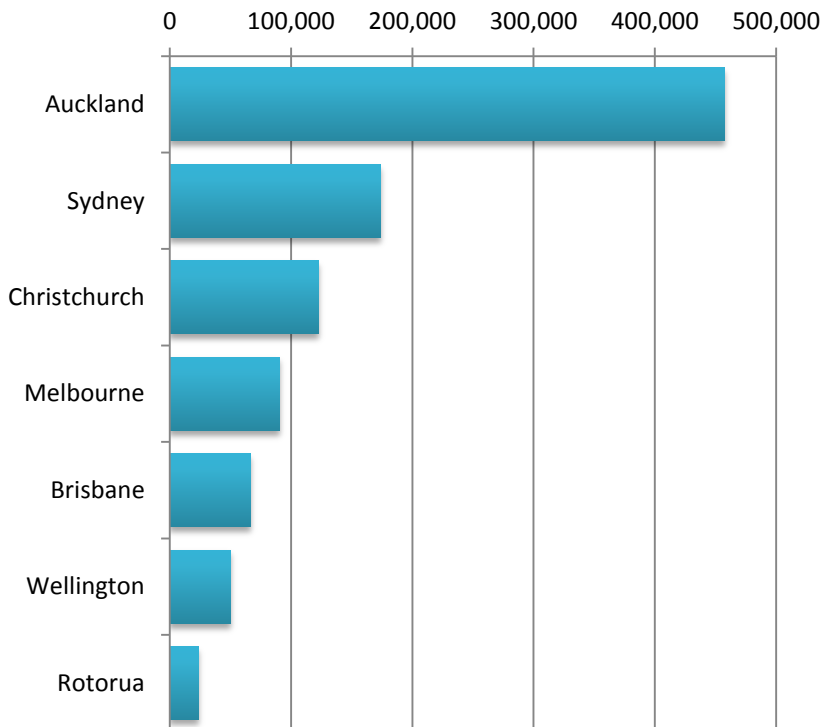
OPERATOR	AIRPORT	S13		S14		SEATS +/-	ATMS +/-		
		SEATS	ATMS	SEATS	ATMS				
JQ	Jetstar	AKL	Auckland International	4,500	25	5,760	32	1,260	7
		MEL	Melbourne	1,440	8	2,520	14	1,080	6
		SYD	Sydney Kingsford Smith	720	4	2,160	12	1,440	8
		WLG	Wellington International	1,440	8	0	0	-1,440	-8
JQ Total				8,100	45	10,440	58	2,340	13
NZ	Air New Zealand	AKL	Auckland International	11,229	69	11,964	70	735	1
		BNE	Brisbane International	1,344	8	1,344	8	0	0
		CHC	Christchurch International	4,148	62	4,092	42	-56	-20
		MEL	Melbourne	2,352	14	2,688	16	336	2
		ROT	Rotorua International Airport	612	9	884	13	272	4
		SYD	Sydney Kingsford Smith	3,360	20	3,696	22	336	2
	WLG	Wellington International	2,412	24	2,967	30	555	6	
NZ Total				25,457	206	27,635	201	2,178	-5
QF	Qantas	BNE	Brisbane International	336	2	336	2	0	0
		SYD	Sydney Kingsford Smith	1,008	6	2,352	14	1,344	8
QF Total				1,344	8	2,688	16	1,344	8
VA	Virgin Australia	BNE	Brisbane International	1,760	10	2,112	12	352	2
		SYD	Sydney Kingsford Smith	1,408	8	1,408	8	0	0
VA Total				3,168	18	3,520	20	352	2

Air Transport Movements by Destination



Destination	ATM'S
Auckland	2,625
Christchurch	1,448
Sydney	1,011
Wellington	597
Melbourne	520
Brisbane	384
Rotorua	350

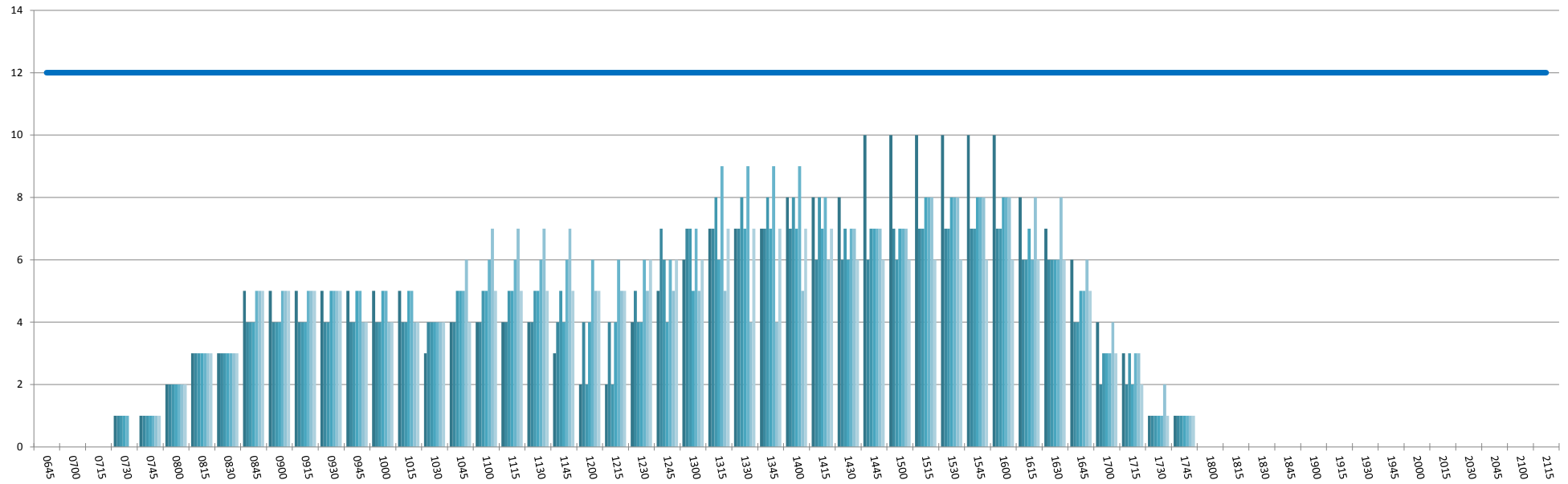
Air Transport Seats by Destination



Destination	SEATS
Auckland	457,407
Sydney	174,032
Christchurch	123,012
Melbourne	90,864
Brisbane	66,480
Wellington	50,484
Rotorua	23,800

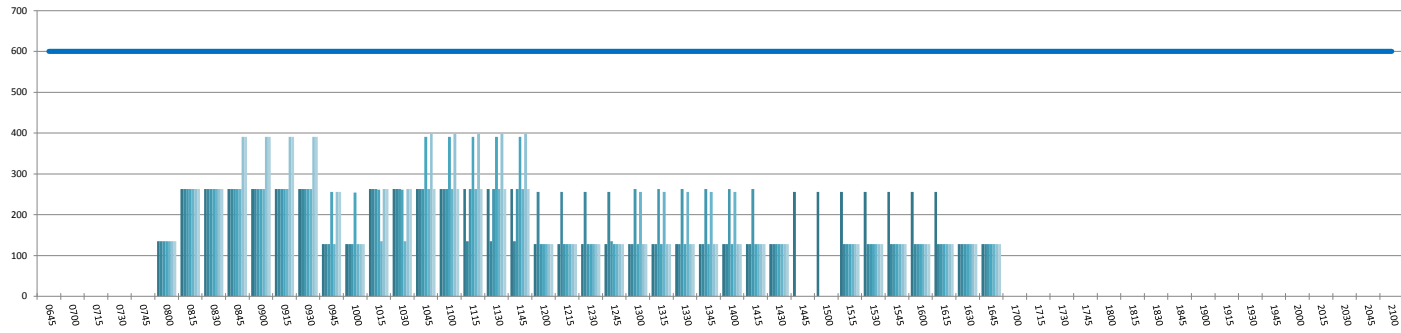
RUNWAY TOTAL UTILISATION PER 60 MINUTES (ROLLING EVERY 15 MINUTES)

Peak Week Movements per Hour - All times LOCAL



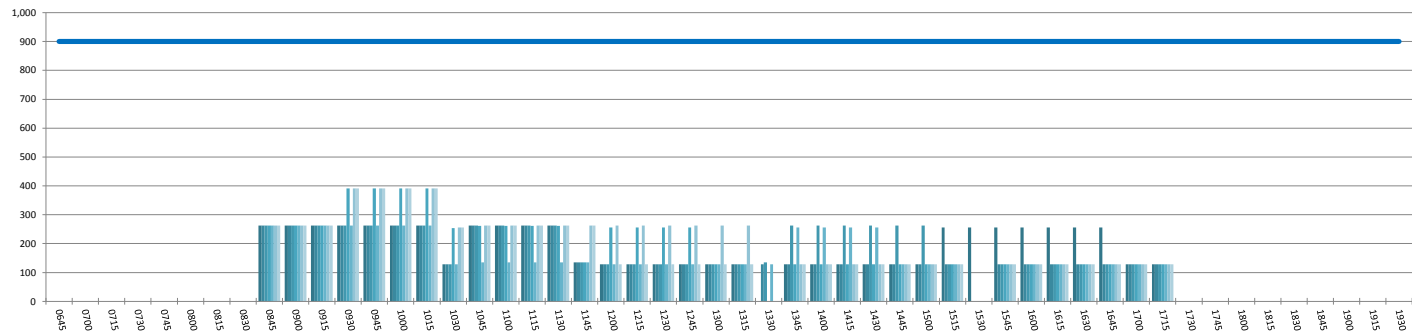
DOMESTIC TERMINAL ARRIVALS UTILISATION PER 60 MINUTES (ROLLING EVERY 15 MINUTES)

Peak Week Movements per Hour - All times LOCAL



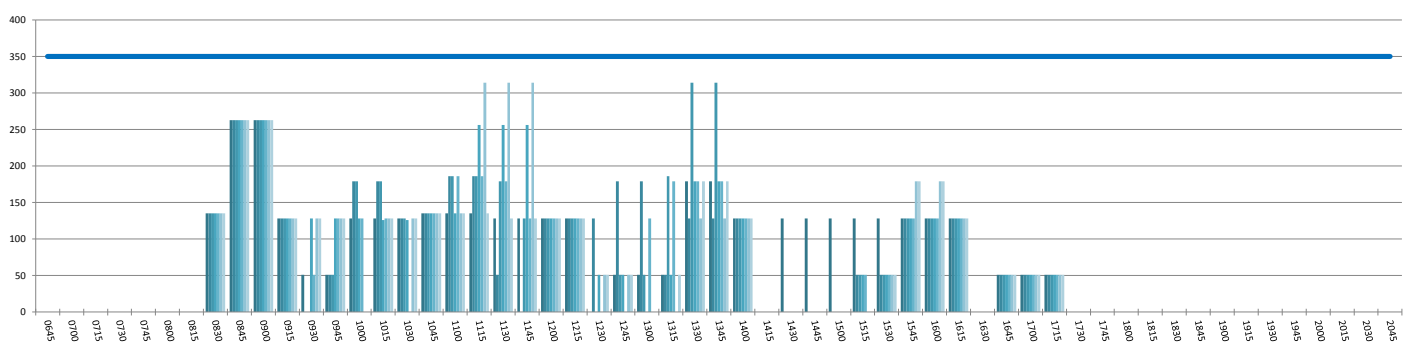
DOMESTIC TERMINAL DEPARTURES UTILISATION PER 60 MINUTES (ROLLING EVERY 15 MINUTES)

Peak Week Movements per Hour - All times LOCAL



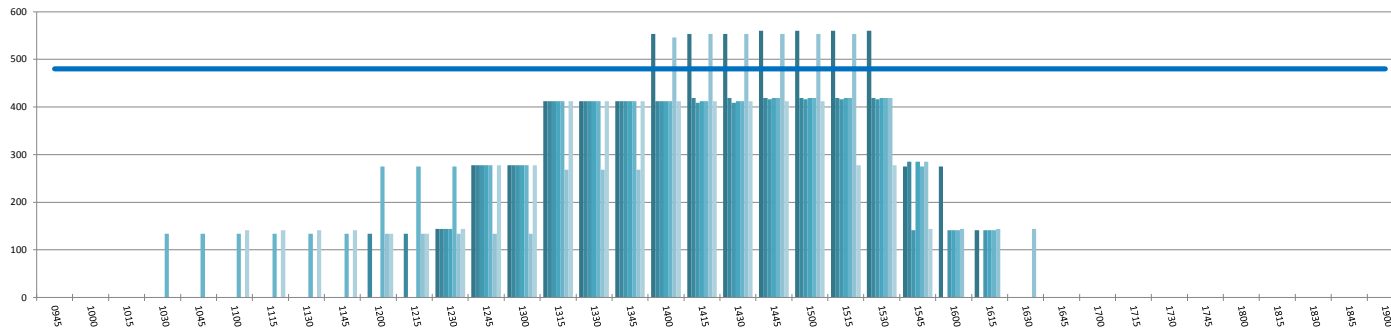
DOMESTIC TERMINAL ARRIVALS UTILISATION PER 30 MINUTES (ROLLING EVERY 15 MINUTES)

Peak Week Movements per Hour - All times LOCAL



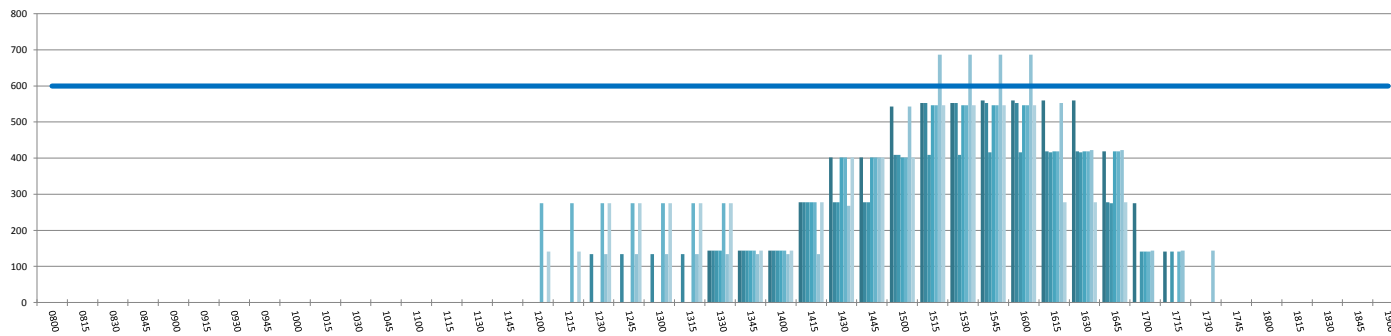
INTERNATIONAL TERMINAL ARRIVALS UTILISATION PER 60 MINUTES (ROLLING EVERY 15 MINUTES)

Peak Week Movements per Hour - All times LOCAL



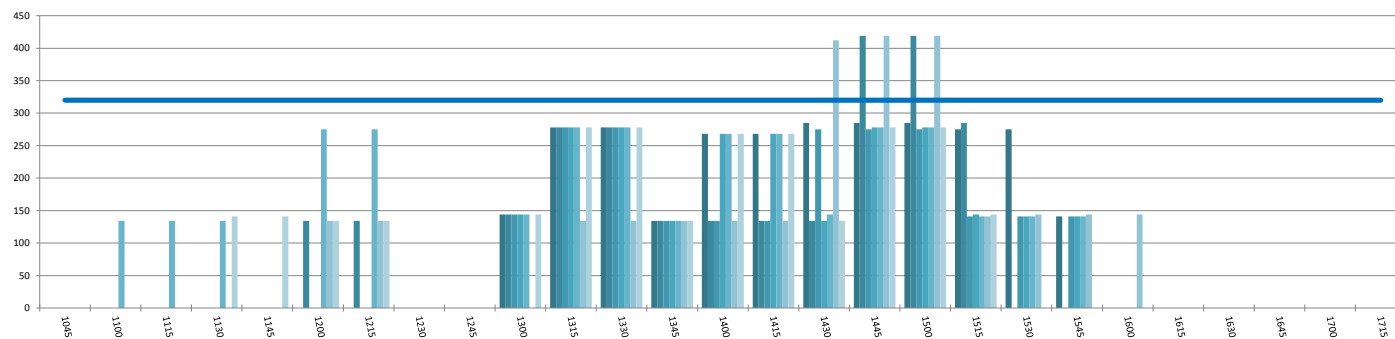
INTERNATIONAL TERMINAL DEPARTURES UTILISATION PER 60 MINUTES (ROLLING EVERY 15 MINUTES)

Peak Week Movements per Hour - All times LOCAL



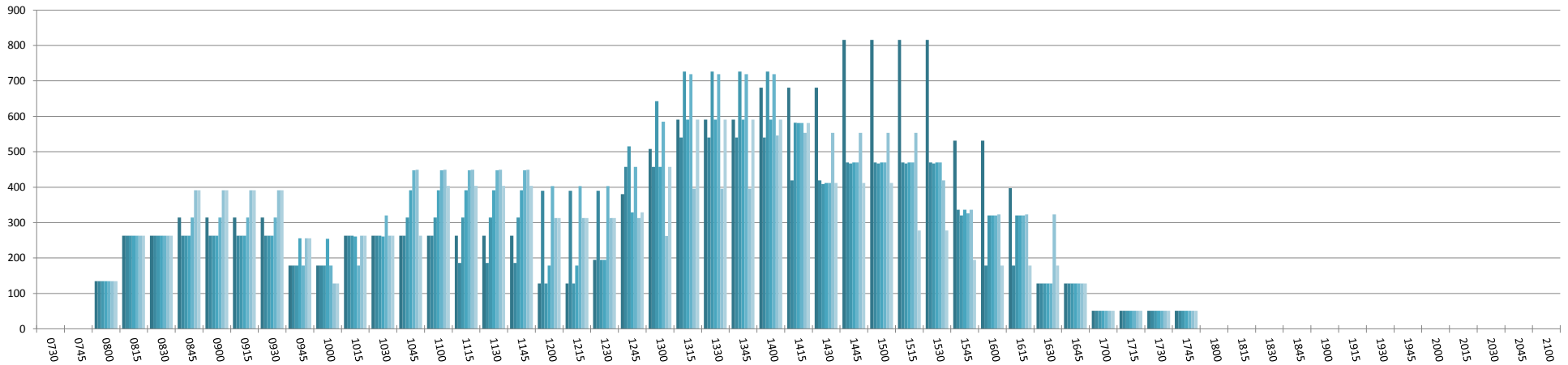
INTERNATIONAL TERMINAL ARRIVALS UTILISATION PER 30 MINUTES (ROLLING EVERY 15 MINUTES)

Peak Week Movements per Hour - All times LOCAL



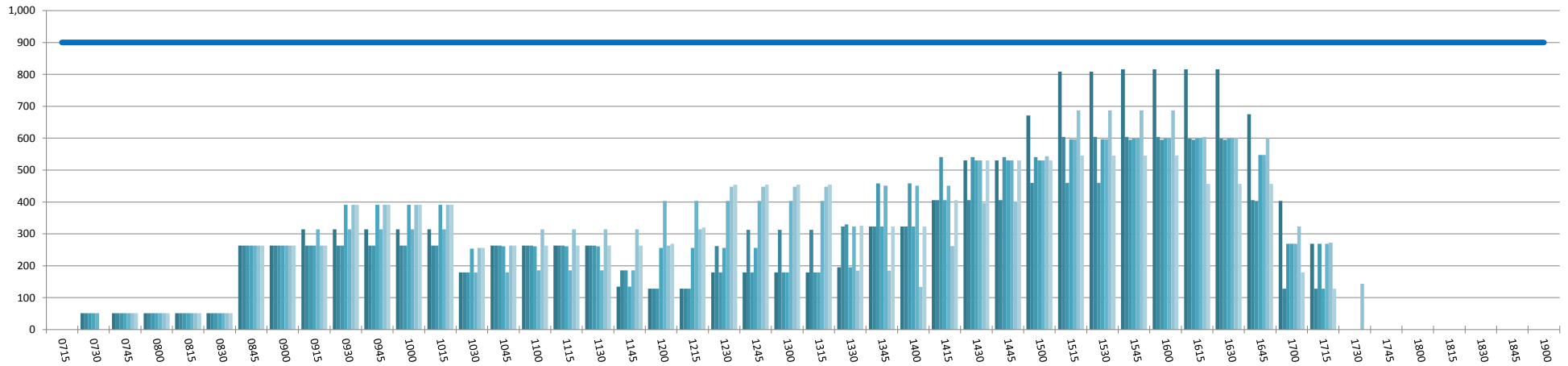
ENTIRE TERMINAL PASSENGER ARRIVALS UTILISATION PER 60 MINUTES (ROLLING EVERY 15 MINUTES)

Peak Week Movements per Hour - All times LOCAL



ENTIRE TERMINAL PASSENGER DEPARTURES UTILISATION PER 60 MINUTES (ROLLING EVERY 15 MINUTES)

Peak Week Movements per Hour - All times LOCAL



GLOSSARY OF TERMS

Air Transport Movement (ATM)	A scheduled or charter passenger or freight aircraft movement.
Allocation	The allocation of slots such that demand is constrained to fit within declared scheduling limits.
Common Travel Area (CTA)	Services to or from the Republic of Ireland and the Channel Islands.
Passenger ATM	A scheduled or charter <u>passenger</u> aircraft movement (ie, excluding all-cargo aircraft movements).
Scheduling Limits	Limiting parameters declared by the Airport Operator used in the coordination process.
Seats	The number of seats based on the aircraft configuration advised by the airline.
Peak Week	The Peak Week for S14 is 14 to 20 July 2014
Data Snapshot	All data used for this report was as held 20 March 2014

GUIDE TO HISTOGRAMS

The histograms show the pattern of traffic by time of day against the appropriate scheduling limit. Each time period consist of seven columns representing the days-of-week, Monday through Sunday.