

# QUEENSTOWN INTERNATIONAL AIRPORT

## ZQN

### S15 Start of Season Report

Key Statistics	S14 Operated	S15 Season Start	Percentage Change	
Air Transport Movements	6,731	7,138	▲	6%
Total Seats	952,029	1,013,868	▲	6%
Seats per Passenger ATM	141	142		

Contents	Page
Airline Rank by ATM's and Seats	2
Aircraft Type Rankings by ATM's and Seats	3
Peak Week Departure Frequencies by Carrier	4
Destination Rankings by ATM's and Seats	5
Runway Peak Week Utilisation	6
Domestic Terminal Peak Week Utilisation	7
International Terminal Peak Week Utilisation	8
Total Terminal Peak Week Utilisation	9
Glossary	10

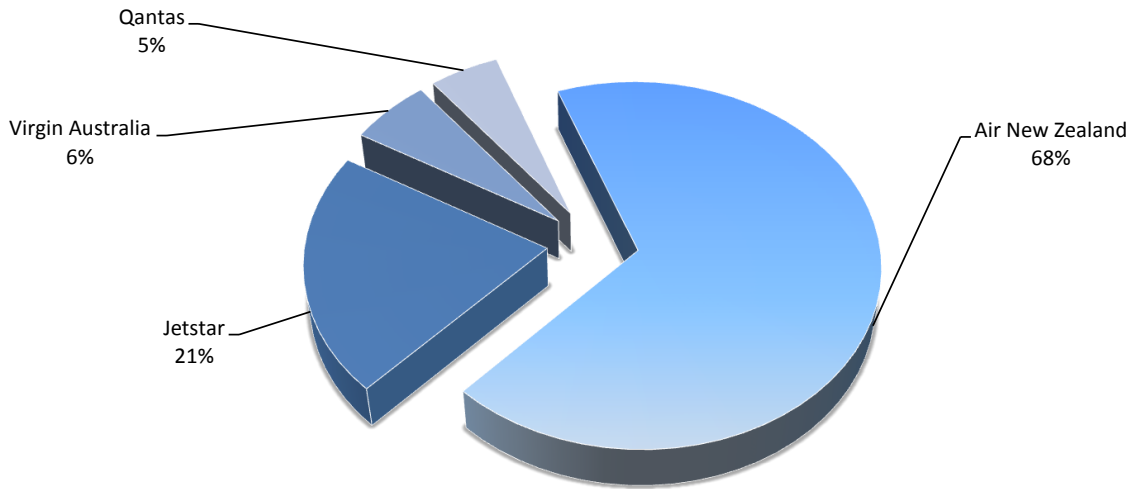
Data in this report is current as of 16 March 2015

No warranty whether expressed or implied as to the completeness, accuracy, fitness for purpose, or satisfactory quality is given by ACL regarding the information in this report, which is provided by third parties. Accordingly, ACL excludes all liability with regard to such data.

The contents of this report may not be reproduced without the written consent of ACL.

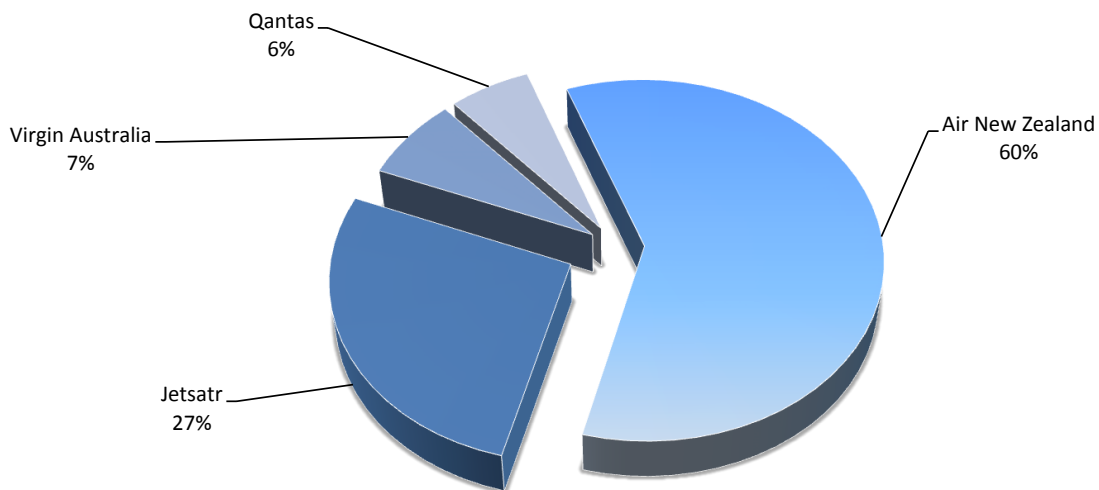
## Airlines by Air Transport Movements (ATMs)

Airline	Movements
Air New Zealand	4,828
Jetstar	1,522
Virgin Australia	426
Qantas	362



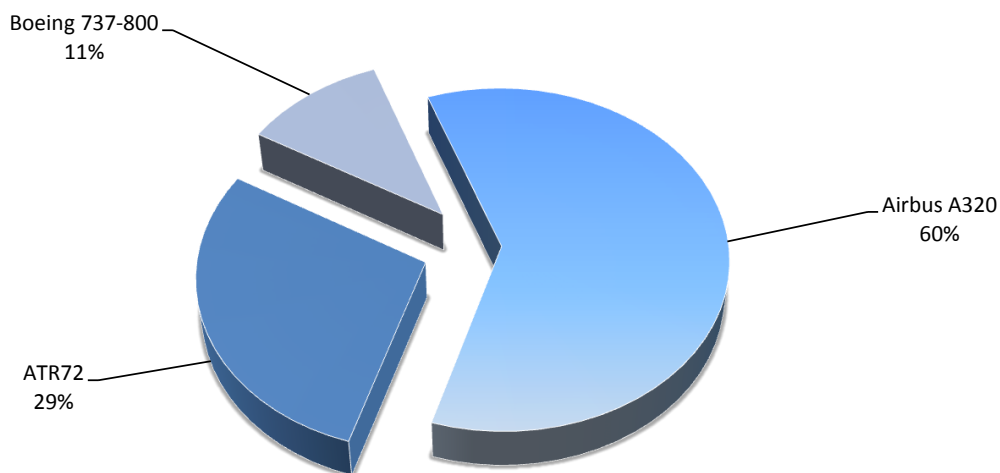
## Airlines by Seats

Airline	Seats
Air New Zealand	604,116
Jetsatr	273,960
Virgin Australia	74,976
Qantas	60,816



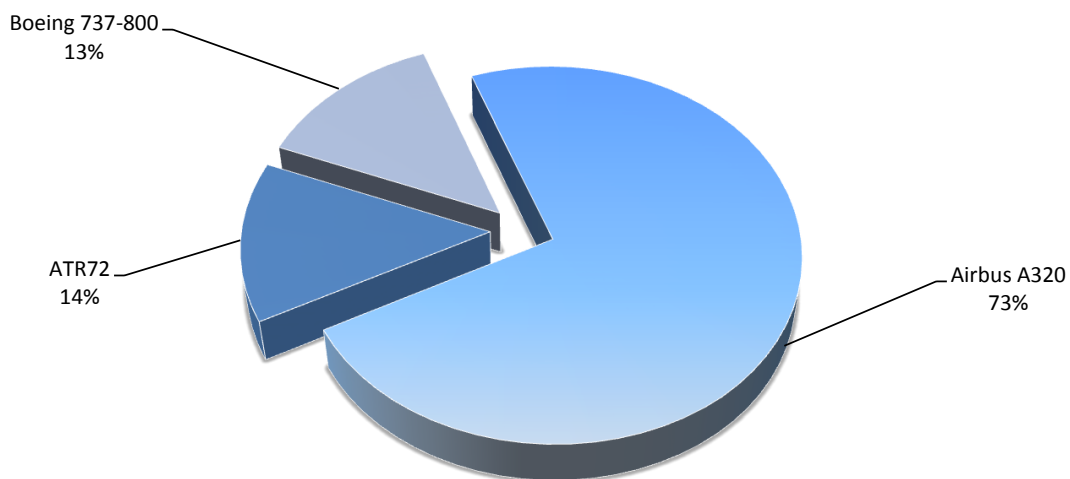
## Aircraft Types by Air Transport Movements (ATMs)

Airline	Movements
Airbus A320	4,304
ATR72	2,046
Boeing 737-800	788



## Aircraft Types by Seats

Airline	Seats
Airbus A320	738,948
ATR72	139,128
Boeing 737-800	135,792



## QUEENSTOWN INTERNATIONAL AIRPORT

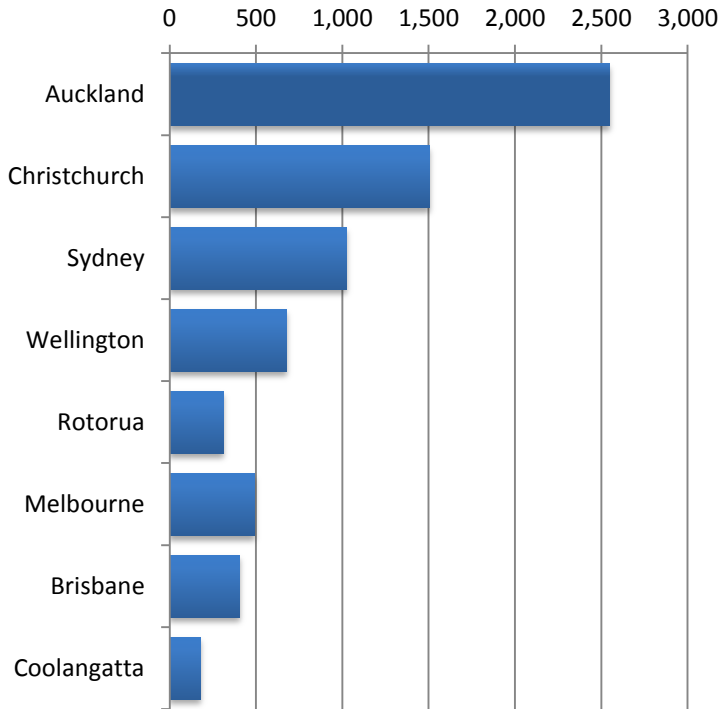
### PEAK WEEK DEPARTURE FREQUENCIES - BY CARRIER

S14 PEAK WEEK 14 to 20 July 2014

S15 PEAK WEEK 13 to 19 July 2015

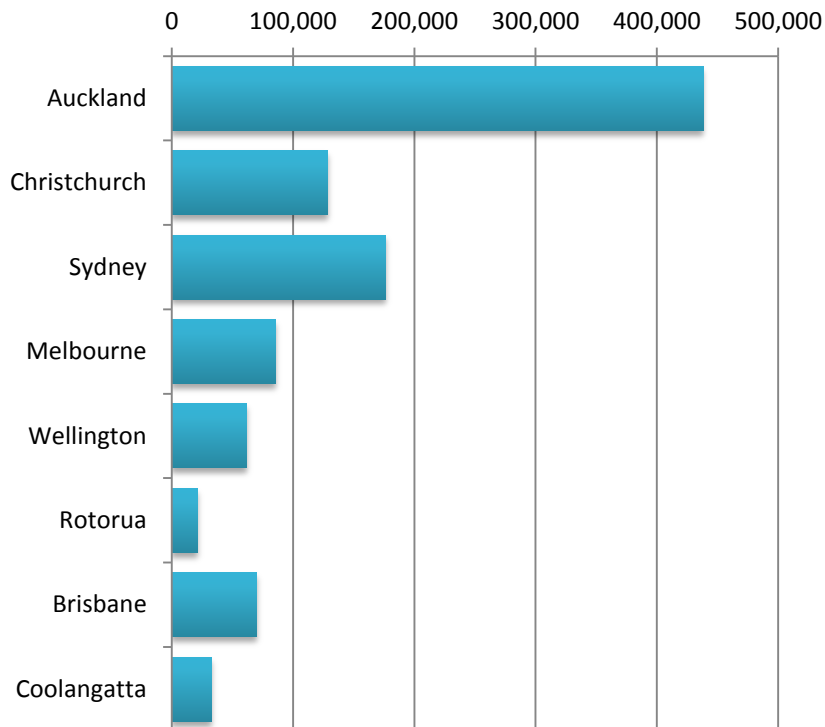
OPERATOR	AIRPORT	S14		S15		SEATS +/-	ATMS +/-		
		SEATS	ATMS	SEATS	ATMS				
JQ	Jetstar	AKL	Auckland International	2,340	13	2,340	13	0	0
		MEL	Melbourne	1,260	7	1,260	7	0	0
		OOL	Gold Coast Coolangatta	0	0	540	3	540	3
		SYD	Sydney Kingsford Smith	1,080	6	1,260	7	180	1
<b>JQ Total</b>				<b>4,680</b>	<b>26</b>	<b>5,400</b>	<b>30</b>	<b>720</b>	<b>4</b>
NZ	Air New Zealand	AKL	Auckland International	5,982	35	6,216	37	234	2
		BNE	Brisbane International	672	4	672	4	0	0
		CHC	Christchurch International	1,978	20	2,468	26	490	6
		MEL	Melbourne	1,344	8	1,344	8	0	0
		ROT	Rotorua International Airport	476	7	136	2	-340	-5
		SYD	Sydney Kingsford Smith	1,848	11	1,848	11	0	0
	WLG	Wellington International	1,426	15	1,352	14	-74	-1	
<b>NZ Total</b>				<b>13,726</b>	<b>100</b>	<b>14,036</b>	<b>102</b>	<b>310</b>	<b>2</b>
QF	Qantas	BNE	Brisbane International	168	1	336	2	168	1
		SYD	Sydney Kingsford Smith	1,176	7	1,176	7	0	0
<b>QF Total</b>				<b>1,344</b>	<b>8</b>	<b>1,512</b>	<b>9</b>	<b>168</b>	<b>1</b>
VA	Virgin Australia	BNE	Brisbane International	1,056	6	1,056	6	0	0
		SYD	Sydney Kingsford Smith	704	4	704	4	0	0
<b>VA Total</b>				<b>1,760</b>	<b>10</b>	<b>1,760</b>	<b>10</b>	<b>0</b>	<b>0</b>

## Air Transport Movements by Destination



Destination	ATM'S
Auckland	2,549
Christchurch	1,504
Sydney	1,022
Wellington	678
Rotorua	310
Melbourne	491
Brisbane	404
Coolangatta	180

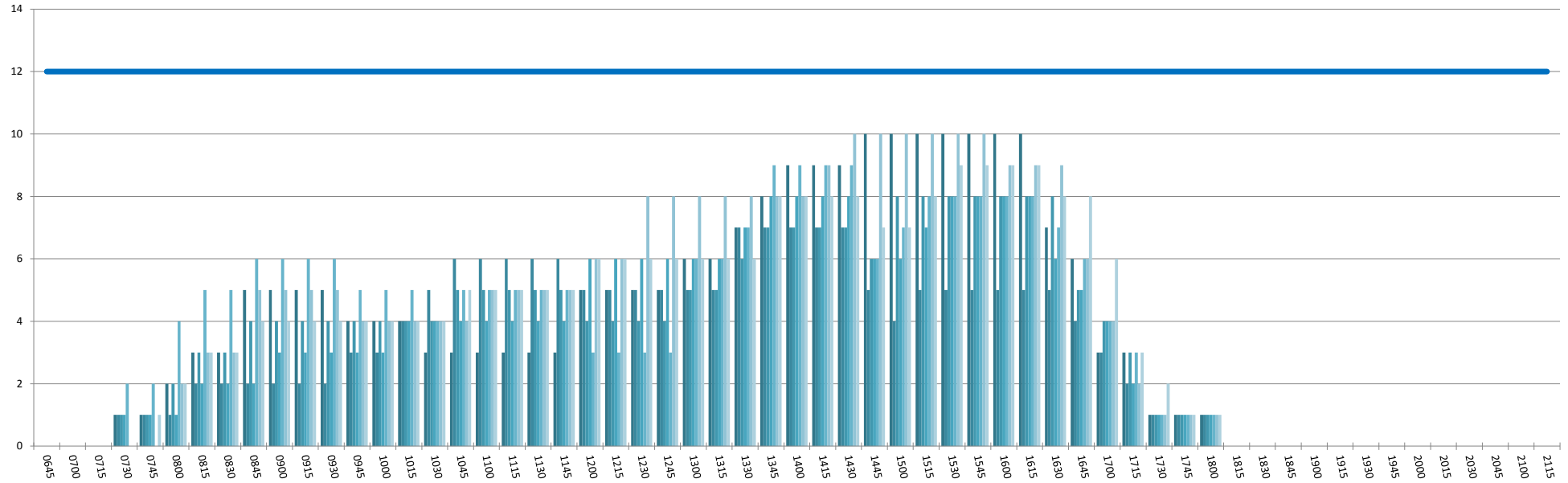
## Air Transport Seats by Destination



Destination	SEATS
Auckland	438,057
Christchurch	128,615
Sydney	176,264
Melbourne	85,788
Wellington	61,904
Rotorua	21,080
Brisbane	69,760
Coolangatta	32,400

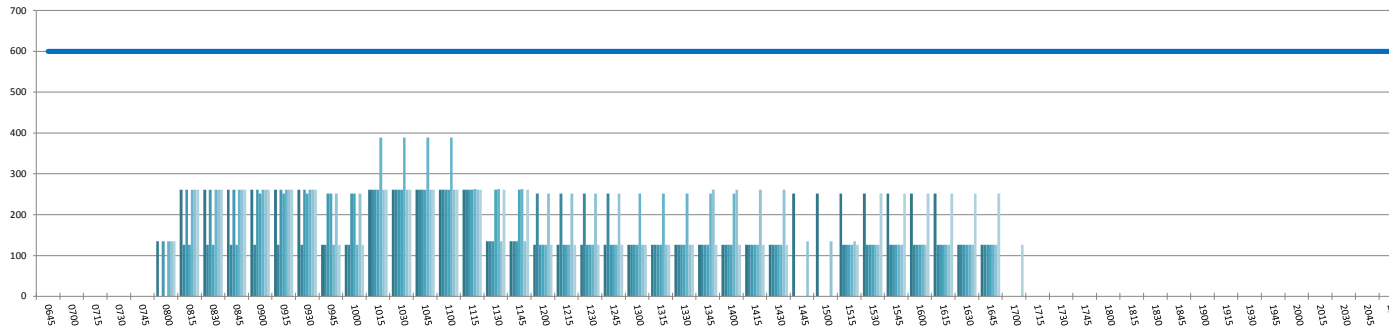
# RUNWAY TOTAL UTILISATION PER 60 MINUTES (ROLLING EVERY 15 MINUTES)

Peak Week Movements per Hour - All times LOCAL



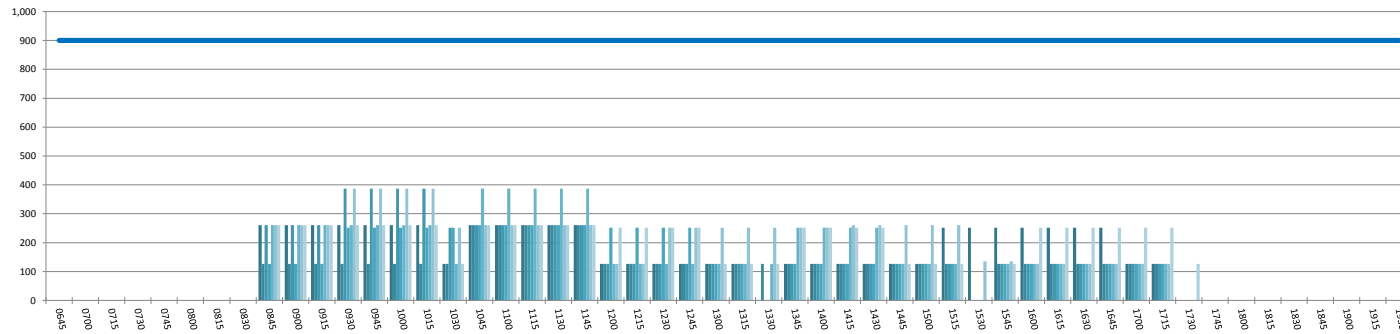
### DOMESTIC TERMINAL ARRIVALS UTILISATION PER 60 MINUTES (ROLLING EVERY 15 MINUTES)

Peak Week Movements per Hour - All times LOCAL



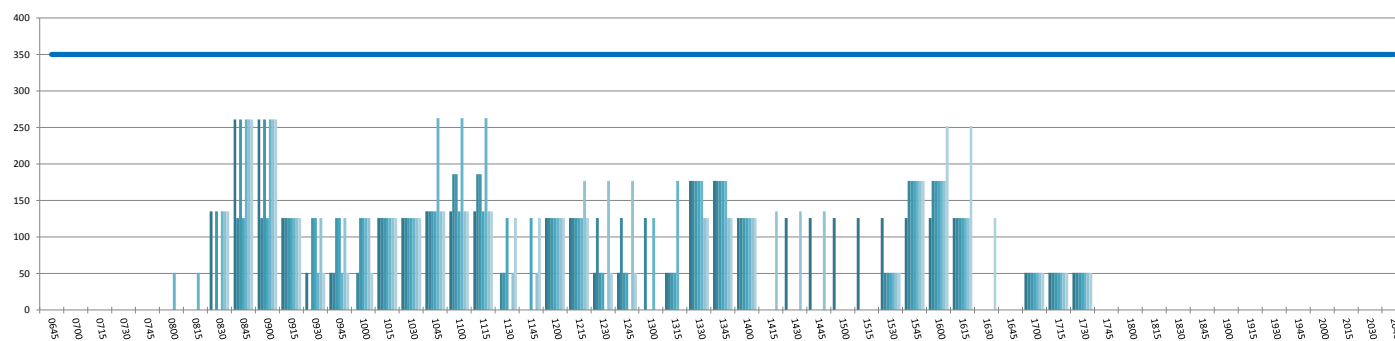
### DOMESTIC TERMINAL DEPARTURES UTILISATION PER 60 MINUTES (ROLLING EVERY 15 MINUTES)

Peak Week Movements per Hour - All times LOCAL



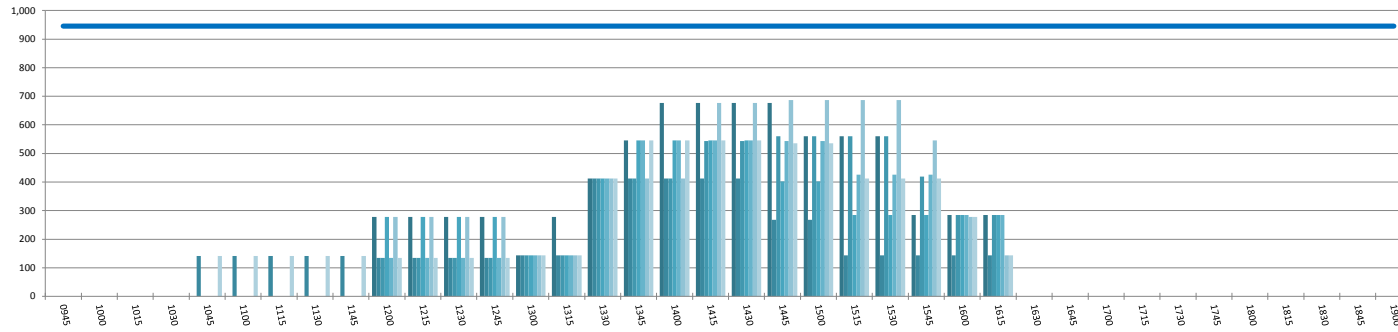
### DOMESTIC TERMINAL ARRIVALS UTILISATION PER 30 MINUTES (ROLLING EVERY 15 MINUTES)

Peak Week Movements per Hour - All times LOCAL



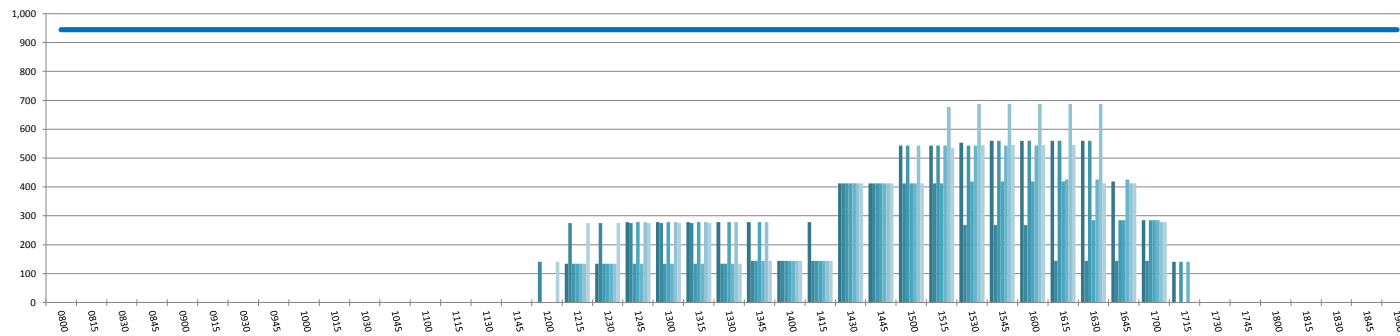
### INTERNATIONAL TERMINAL ARRIVALS UTILISATION PER 60 MINUTES (ROLLING EVERY 15 MINUTES)

Peak Week Movements per Hour - All times LOCAL



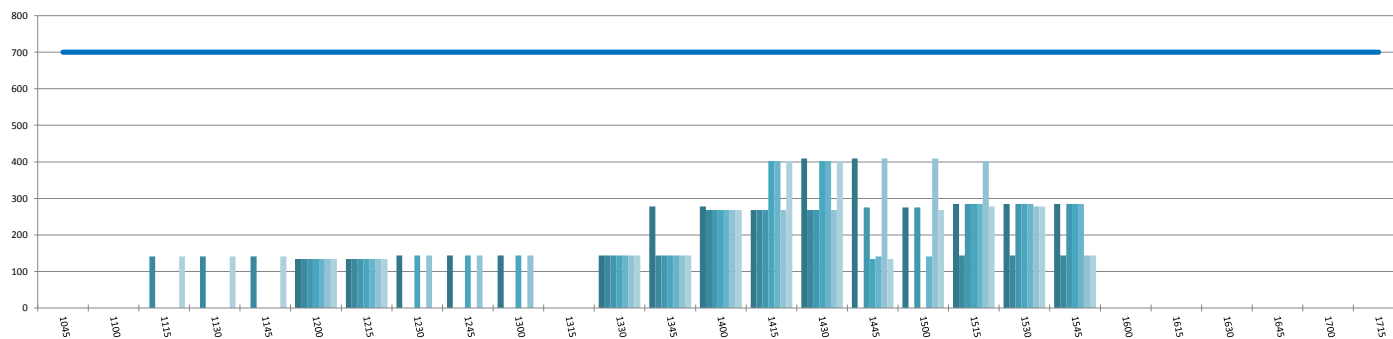
### INTERNATIONAL TERMINAL DEPARTURES UTILISATION PER 60 MINUTES (ROLLING EVERY 15 MINUTES)

Peak Week Movements per Hour - All times LOCAL



### INTERNATIONAL TERMINAL ARRIVALS UTILISATION PER 30 MINUTES (ROLLING EVERY 15 MINUTES)

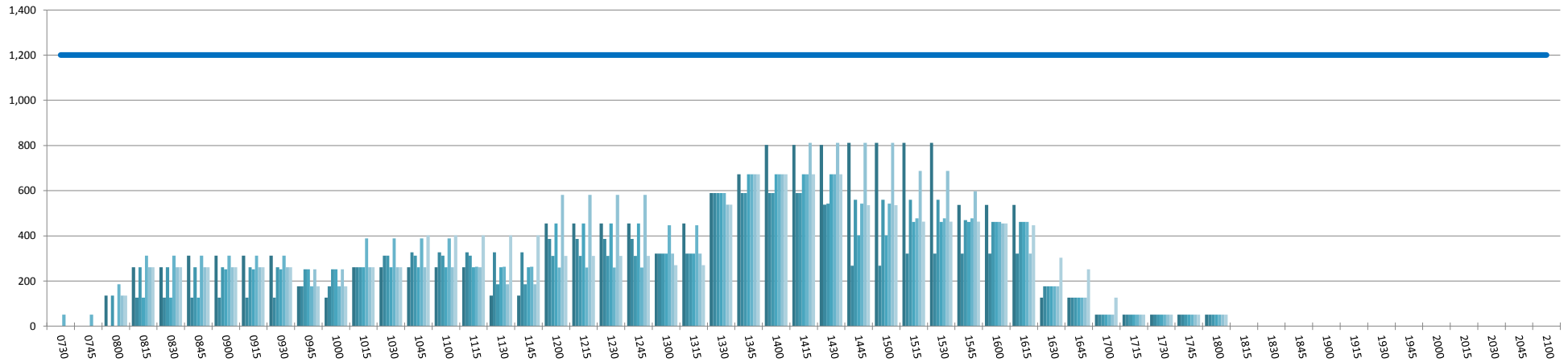
Peak Week Movements per Hour - All times LOCAL





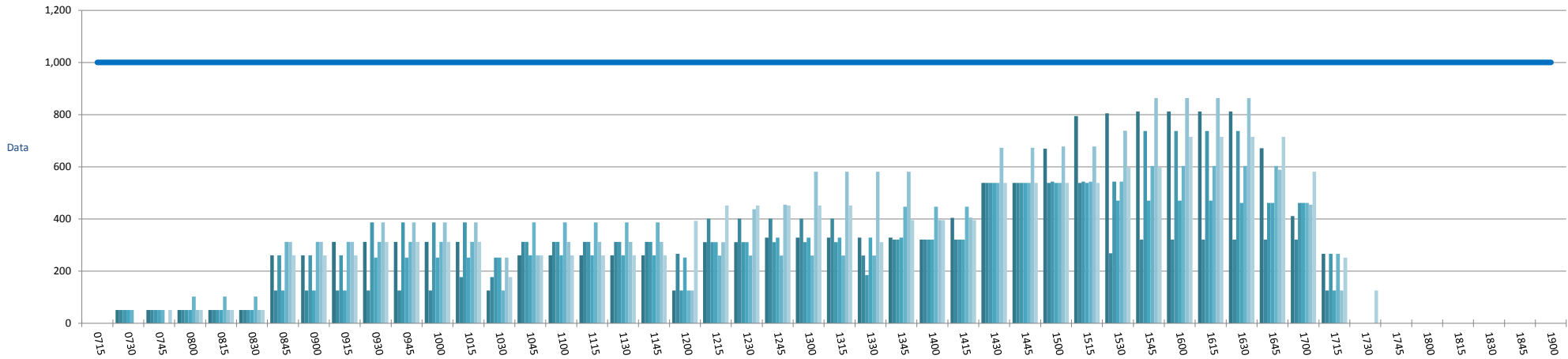
### ENTIRE TERMINAL PASSENGER ARRIVALS UTILISATION PER 60 MINUTES (ROLLING EVERY 15 MINUTES)

Peak Week Movements per Hour - All times LOCAL



### ENTIRE TERMINAL PASSENGER DEPARTURES UTILISATION PER 60 MINUTES (ROLLING EVERY 15 MINUTES)

Peak Week Movements per Hour - All times LOCAL



## GLOSSARY OF TERMS

---

<b>Air Transport Movement (ATM)</b>	A scheduled or charter passenger or freight aircraft movement.
<b>Allocation</b>	The allocation of slots such that demand is constrained to fit within declared scheduling limits.
<b>Common Travel Area (CTA)</b>	Services to or from the Republic of Ireland and the Channel Islands.
<b>Passenger ATM</b>	A scheduled or charter <u>passenger</u> aircraft movement (ie, excluding all-cargo aircraft movements).
<b>Scheduling Limits</b>	Limiting parameters declared by the Airport Operator used in the coordination process.
<b>Seats</b>	The number of seats based on the aircraft configuration advised by the airline.
<b>Peak Week</b>	The Peak Week for S15 is 13 to 19 July 2015
<b>Data Snapshot</b>	All data used for this report was as held 16 March 2015

### GUIDE TO HISTOGRAMS

---

The histograms show the pattern of traffic by time of day against the appropriate scheduling limit. Each time period consist of seven columns representing the days-of-week, Monday through Sunday.