

QUEENSTOWN INTERNATIONAL AIRPORT

ZQN

W13 Season Start Report

Key Statistics	W12 Operated	W13 Planned	Percentage Change	
Air Transport Movements	4,900	4,888	▲	0%
Total Seats	651,911	656,497	▲	1%
Seats per Passenger ATM	133	134		

Contents	Page
Airline Rank by ATM's and Seats	2
Aircraft Type Rankings by ATM's and Seats	3
Peak Week Departure Frequencies by Carrier	4
Destination Rankings by ATM's and Seats	5
Runway Peak Week Utilisation	6
Domestic Terminal Peak Week Utilisation	7
International Terminal Peak Week Utilisation	8
Total Terminal Peak Week Utilisation	9
Glossary	10

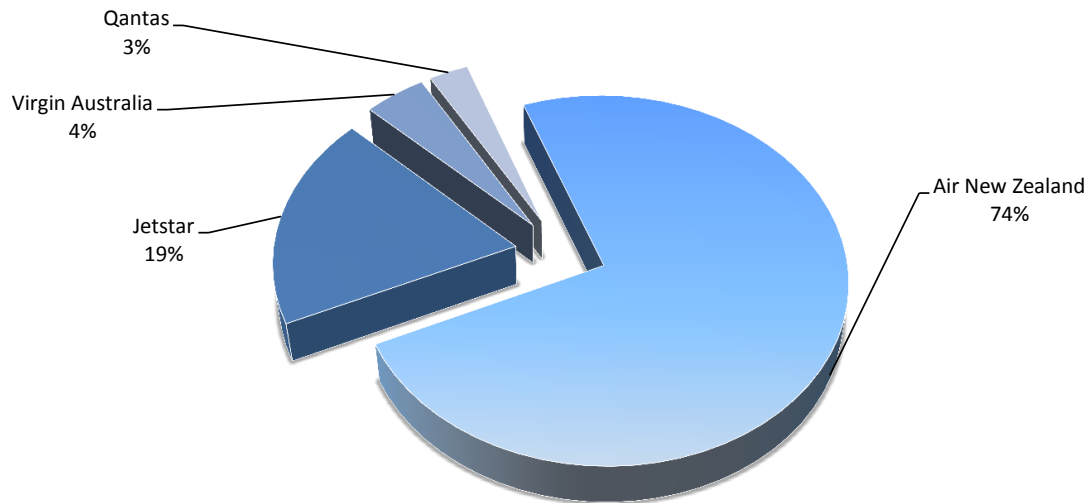
Data in this report is current as of 24 October 2013

No warranty whether expressed or implied as to the completeness, accuracy, fitness for purpose, or satisfactory quality is given by ACL regarding the information in this report, which is provided by third parties. Accordingly, ACL excludes all liability with regard to such data.

The contents of this report may not be reproduced without the written consent of ACL.

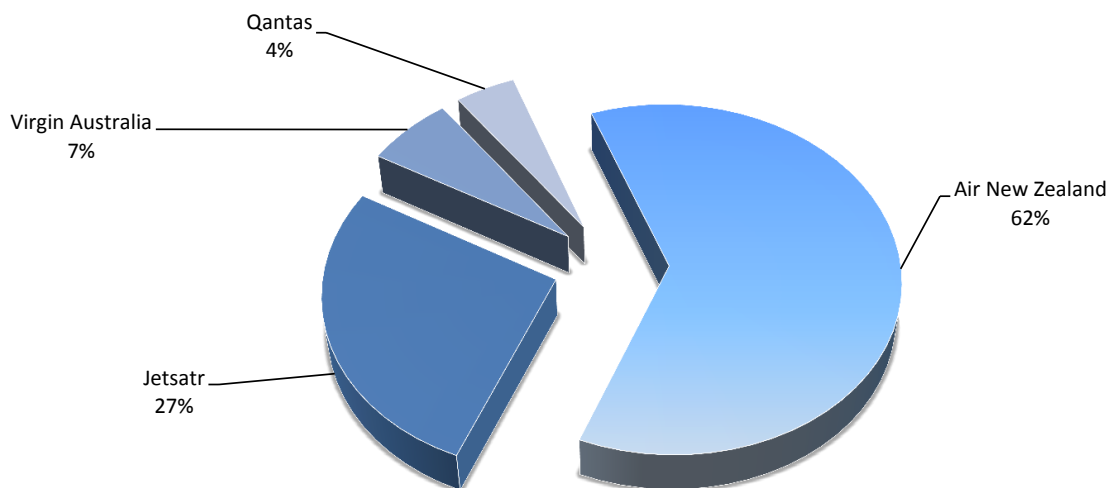
Airlines by Air Transport Movements (ATMs)

Airline	Movements
Air New Zealand	3,606
Jetstar	922
Virgin Australia	220
Qantas	140



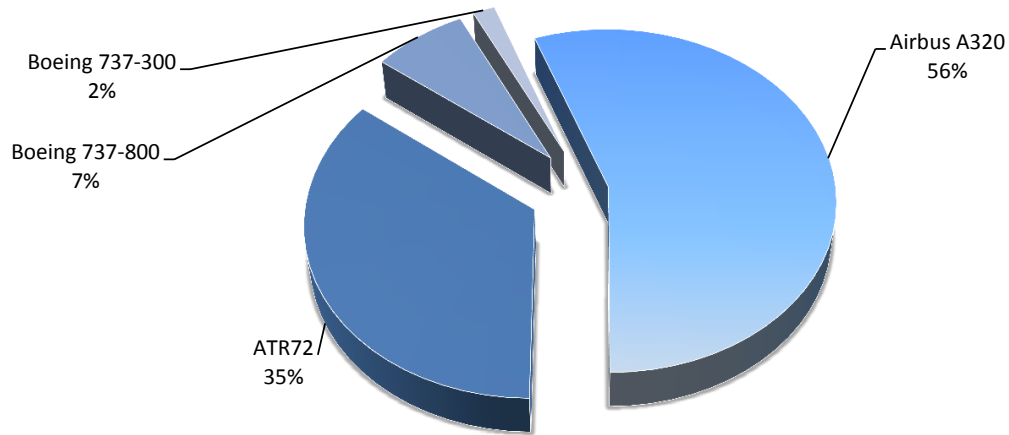
Airlines by Seats

Airline	Seats
Air New Zealand	407,333
Jetsatr	178,416
Virgin Australia	44,000
Qantas	30,240



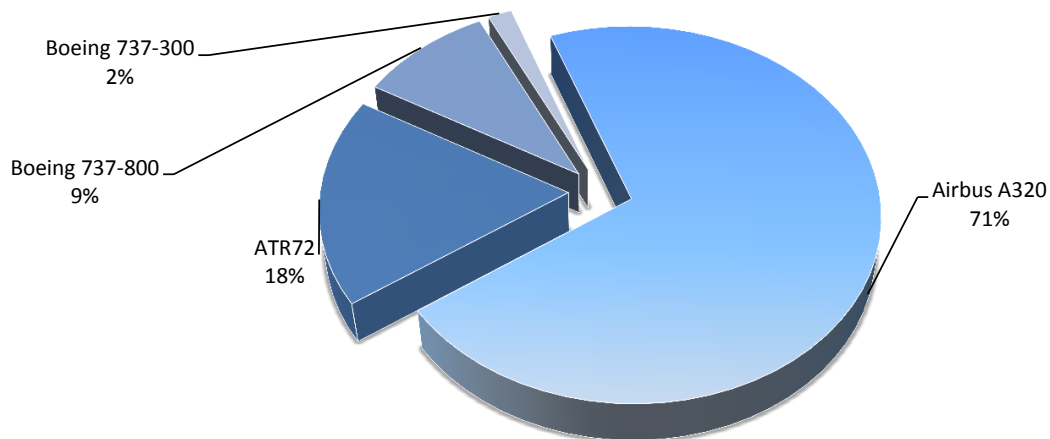
Aircraft Types by Air Transport Movements (ATMs)

Airline	Movements
Airbus A320	2,718
ATR72	1,726
Boeing 737-800	360
Boeing 737-300	84



Aircraft Types by Seats

Airline	Seats
Airbus A320	465,717
ATR72	117,368
Boeing 737-800	62,240
Boeing 737-300	11,172

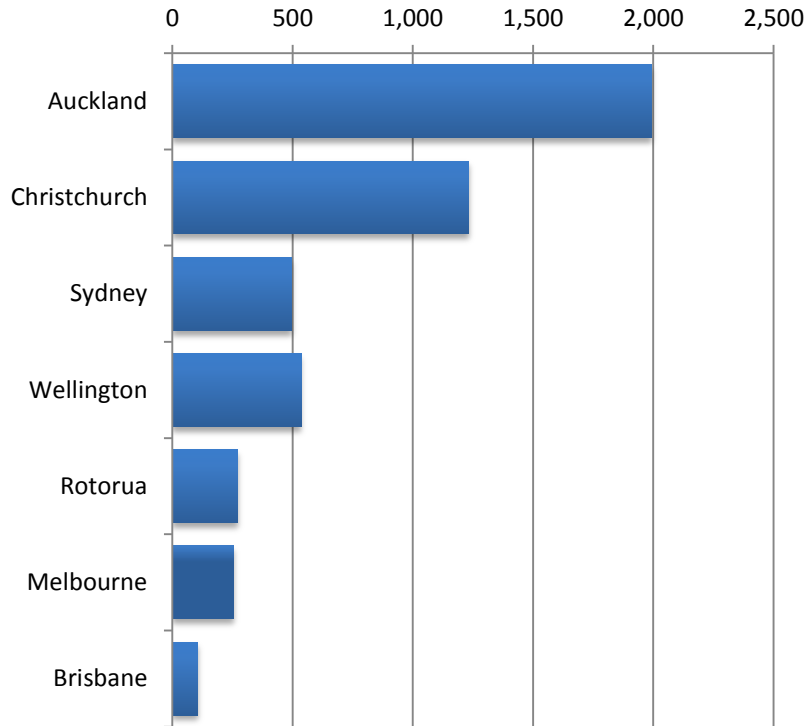


QUEENSTOWN INTERNATIONAL AIRPORT

PEAK WEEK DEPARTURE FREQUENCIES - BY CARRIER

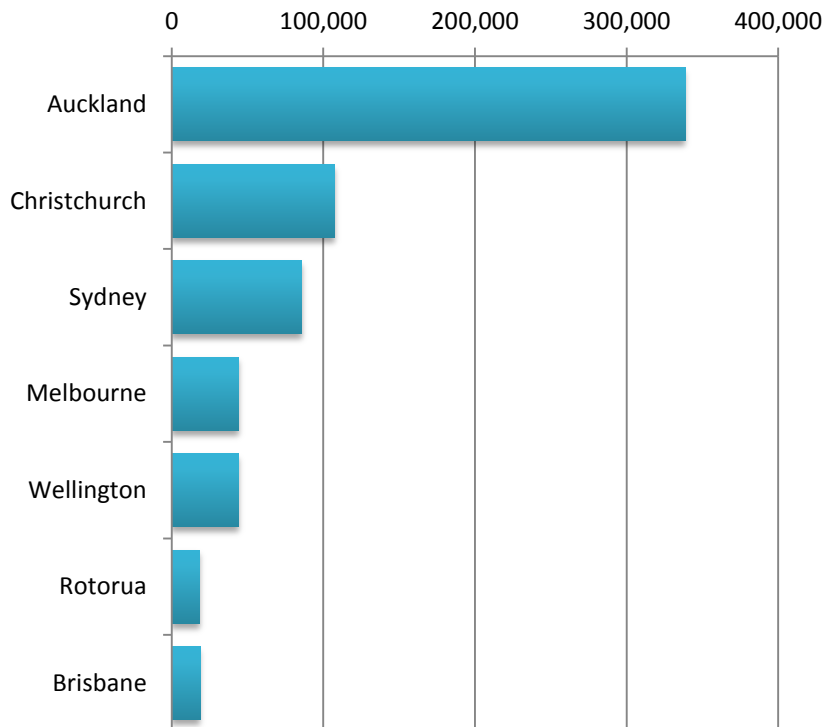
OPERATOR	AIRPORT	W12		W13		SEATS +/-	ATMS +/-		
		SEATS	ATMS	SEATS	ATMS				
JQ	Jetstar	AKL	Auckland International	5,664	32	5,664	32	0	0
		MEL	Melbourne	1,416	8	1,416	8	0	0
		SYD	Sydney Kingsford Smith	1,062	6	1,062	6	0	0
		WLG	Wellington International	2,478	14	0	0	-2,478	-14
JQ Total				10,620	60	8,142	46	-2,478	-14
NZ	Air New Zealand	AKL	Auckland International	10,882	66	12,444	74	1,562	8
		CHC	Christchurch International	3,899	43	6,612	62	2,713	19
		MEL	Melbourne	672	4	1,344	8	672	4
		ROT	Rotorua International Airport	2,291	27	1,020	15	-1,271	-12
		SYD	Sydney Kingsford Smith	1,344	8	1,344	8	0	0
	WLG	Wellington International	1,626	22	2,986	31	1,360	9	
NZ Total				20,714	170	25,750	198	5,036	28
QF	Qantas	SYD	Sydney Kingsford Smith	1,680	10	1,680	10	0	0
QF Total				1,680	10	1,680	10	0	0
VA	Virgin Australia	BNE	Brisbane International	1,056	6	1,056	6	0	0
		SYD	Sydney Kingsford Smith	704	4	704	4	0	0
VA Total				1,760	10	1,760	10	0	0

Air Transport Movements by Destination



Destination	ATM'S
Auckland	1,993
Christchurch	1,233
Sydney	496
Wellington	535
Rotorua	270
Melbourne	255
Brisbane	106

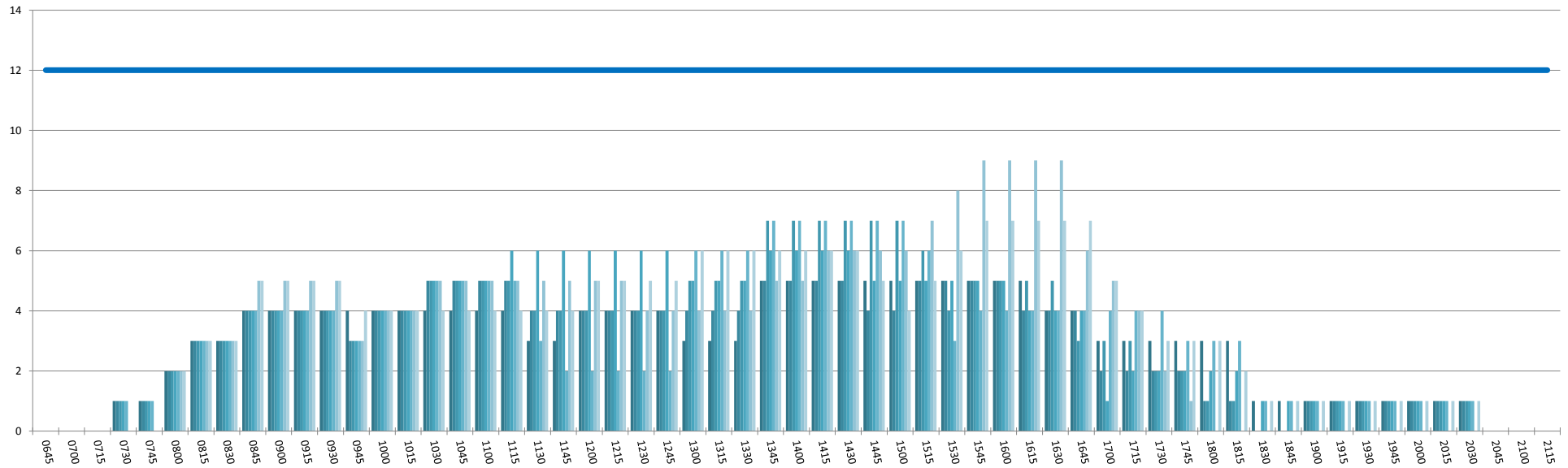
Air Transport Seats by Destination



Destination	SEATS
Auckland	338,579
Christchurch	107,449
Sydney	85,428
Melbourne	44,145
Wellington	43,880
Rotorua	18,360
Brisbane	18,656

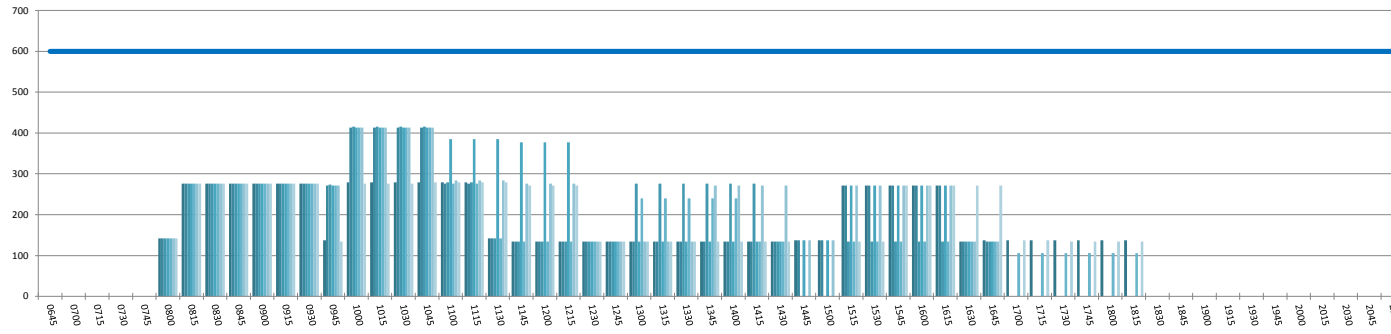
RUNWAY TOTAL UTILISATION PER 60 MINUTES (ROLLING EVERY 15 MINUTES)

Peak Week Movements per Hour - All times LOCAL



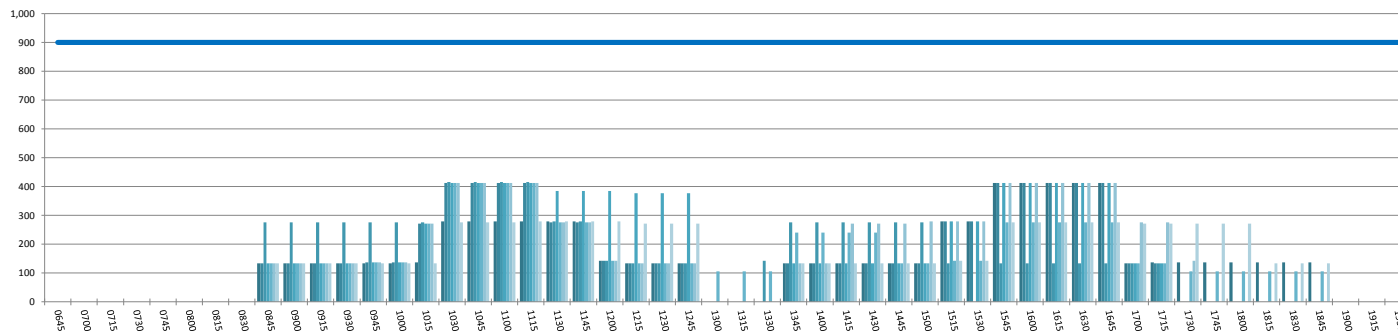
DOMESTIC TERMINAL ARRIVALS UTILISATION PER 60 MINUTES (ROLLING EVERY 15 MINUTES)

Peak Week Movements per Hour - All times LOCAL



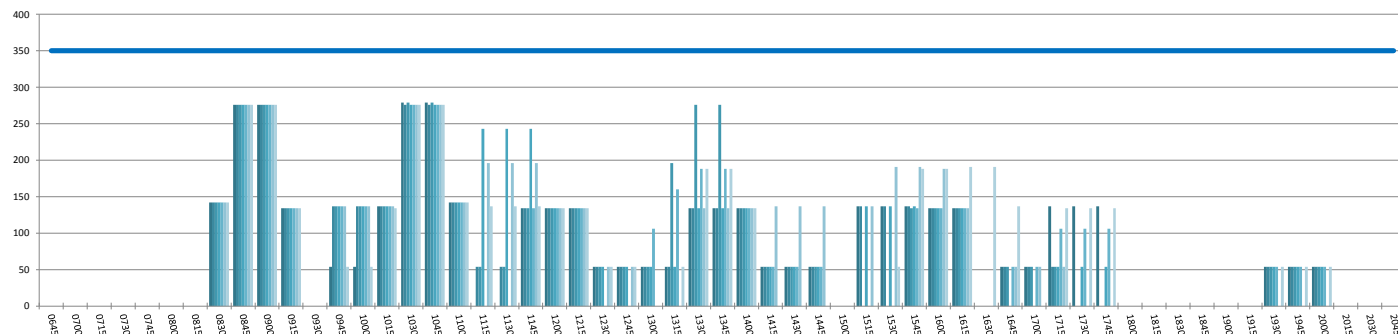
DOMESTIC TERMINAL DEPARTURES UTILISATION PER 60 MINUTES (ROLLING EVERY 15 MINUTES)

Peak Week Movements per Hour - All times LOCAL



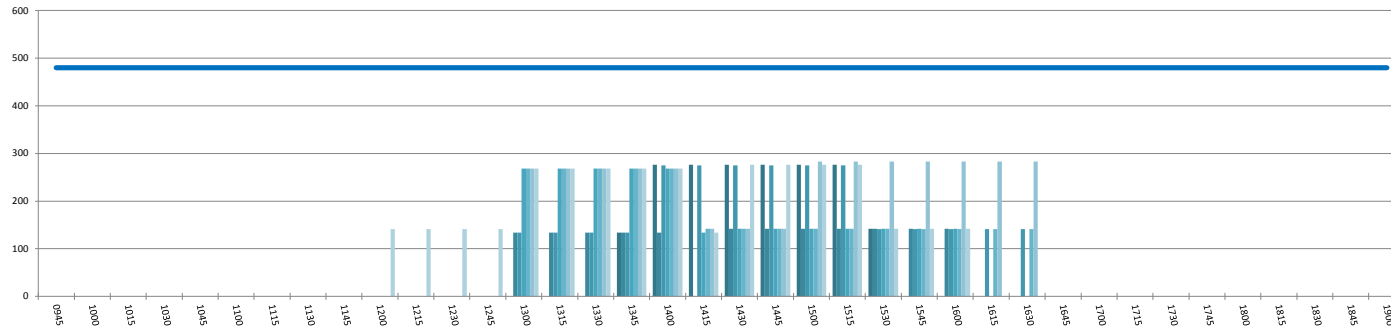
DOMESTIC TERMINAL ARRIVALS UTILISATION PER 30 MINUTES (ROLLING EVERY 15 MINUTES)

Peak Week Movements per Hour - All times LOCAL



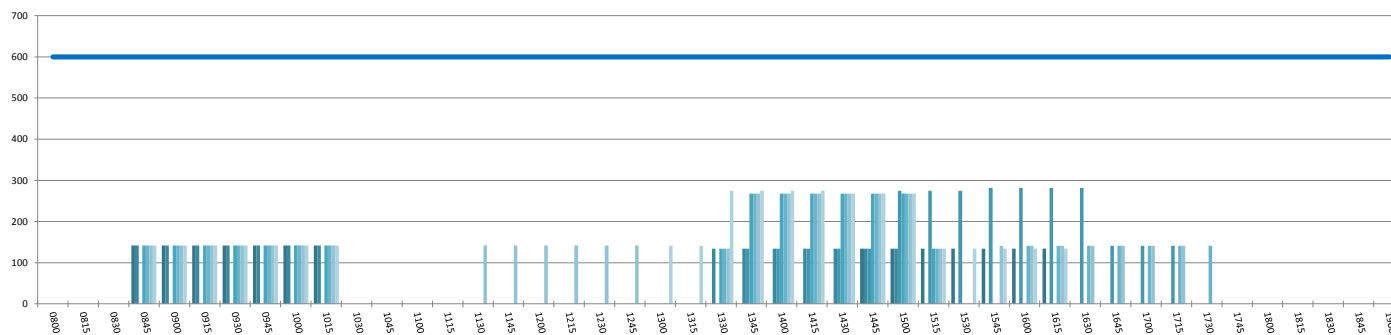
INTERNATIONAL TERMINAL ARRIVALS UTILISATION PER 60 MINUTES (ROLLING EVERY 15 MINUTES)

Peak Week Movements per Hour - All times LOCAL



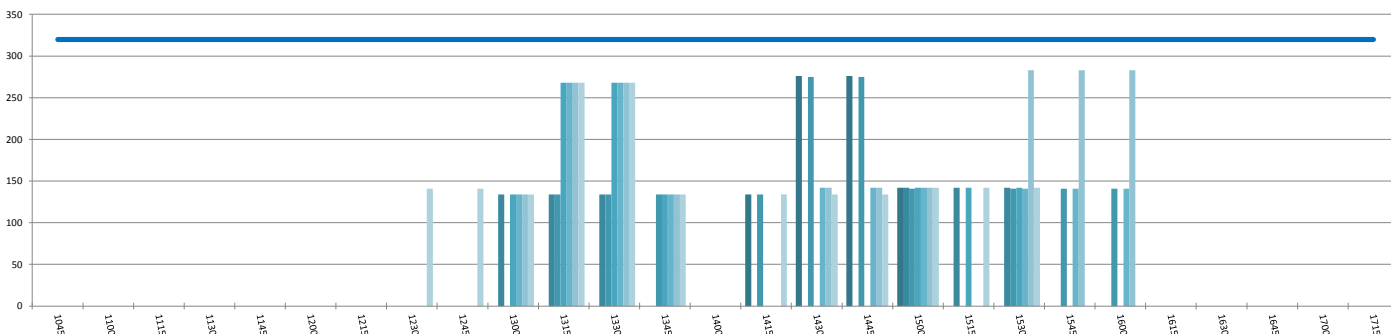
INTERNATIONAL TERMINAL DEPARTURES UTILISATION PER 60 MINUTES (ROLLING EVERY 15 MINUTES)

Peak Week Movements per Hour - All times LOCAL



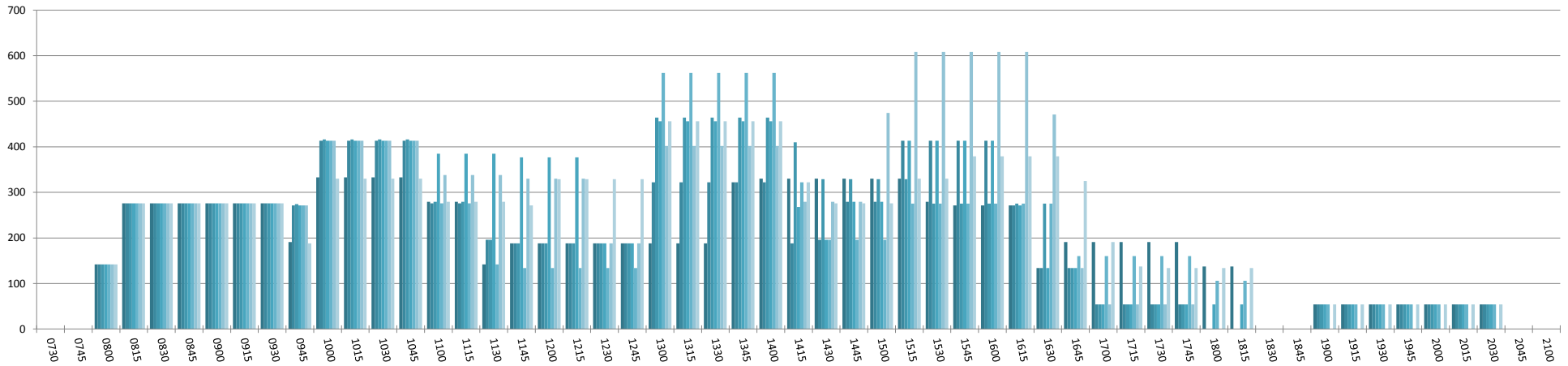
INTERNATIONAL TERMINAL ARRIVALS UTILISATION PER 30 MINUTES (ROLLING EVERY 15 MINUTES)

Peak Week Movements per Hour - All times LOCAL



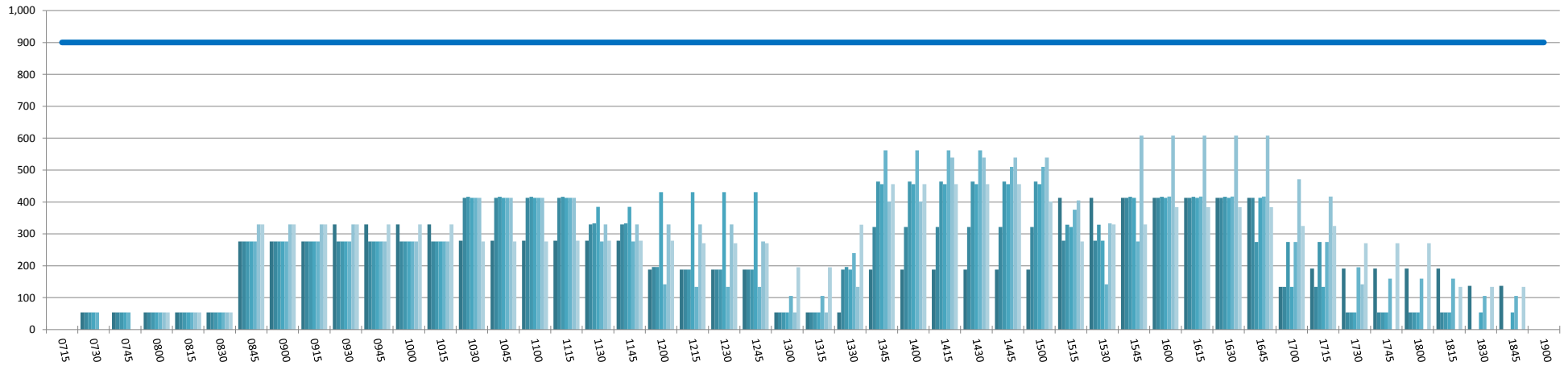
ENTIRE TERMINAL ARRIVALS UTILISATION PER 60 MINUTES (ROLLING EVERY 15 MINUTES)

Peak Week Movements per Hour - All times LOCAL



ENTIRE TERMINAL DEPARTURES UTILISATION PER 60 MINUTES (ROLLING EVERY 15 MINUTES)

Peak Week Movements per Hour - All times LOCAL



GLOSSARY OF TERMS

Air Transport Movement (ATM)	A scheduled or charter passenger or freight aircraft movement.
Allocation	The allocation of slots such that demand is constrained to fit within declared scheduling limits.
Common Travel Area (CTA)	Services to or from the Republic of Ireland and the Channel Islands.
Demand	The unconstrained demand for slots, prior to any schedule adjustments.
Passenger ATM	A scheduled or charter <u>passenger</u> aircraft movement (ie, excluding all-cargo aircraft movements).
Scheduling Limits	Limiting parameters declared by the Airport Operator used in the coordination process.
Seats	The number of seats based on the aircraft configuration advised by the airline.
Peak Week	The Peak Week for W13 is 30 December 2013 to 05 January 2014
Data Snapshot	All data used for this report was as held 24 October 2013

GUIDE TO HISTOGRAMS

The histograms show the pattern of traffic by time of day against the appropriate scheduling limit. Each time period consist of seven columns representing the days-of-week, Monday through Sunday.