

QUEENSTOWN INTERNATIONAL AIRPORT

ZQN

W14 Start of Season Report

Key Statistics	W13 Operated	W14 Start of Season	Percentage Change
Air Transport Movements	4,946	5,157	▲ 4%
Total Seats	658,733	725,227	▲ 10%
Seats per Passenger ATM	133	141	

Contents	Page
Airline Rank by ATM's and Seats	2
Aircraft Type Rankings by ATM's and Seats	3
Peak Week Departure Frequencies by Carrier	4
Destination Rankings by ATM's and Seats	5
Runway Peak Week Utilisation	6
Domestic Terminal Peak Week Utilisation	7
International Terminal Peak Week Utilisation	8
Total Terminal Peak Week Utilisation	9
Glossary	10

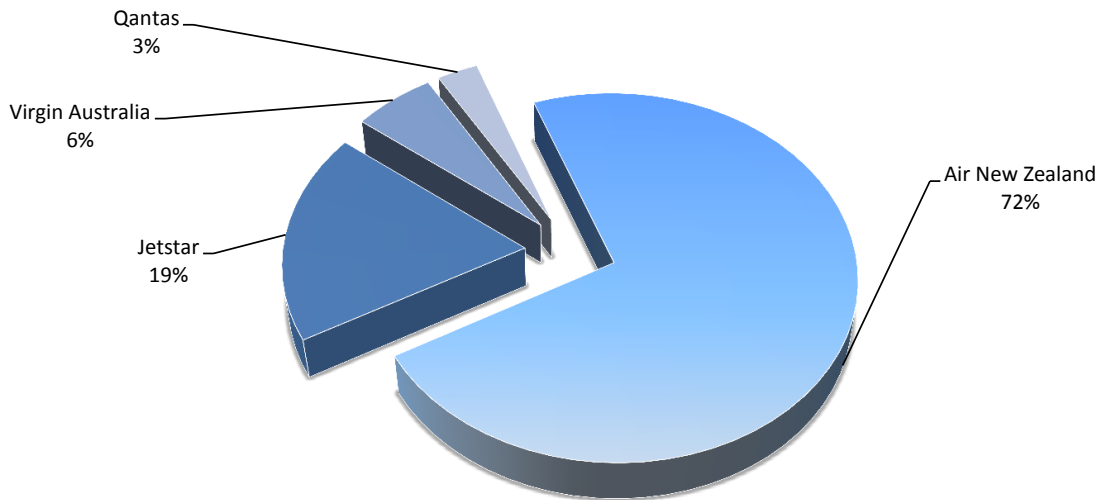
Data in this report is current as of 20 October 2014

No warranty whether expressed or implied as to the completeness, accuracy, fitness for purpose, or satisfactory quality is given by ACL regarding the information in this report, which is provided by third parties. Accordingly, ACL excludes all liability with regard to such data.

The contents of this report may not be reproduced without the written consent of ACL.

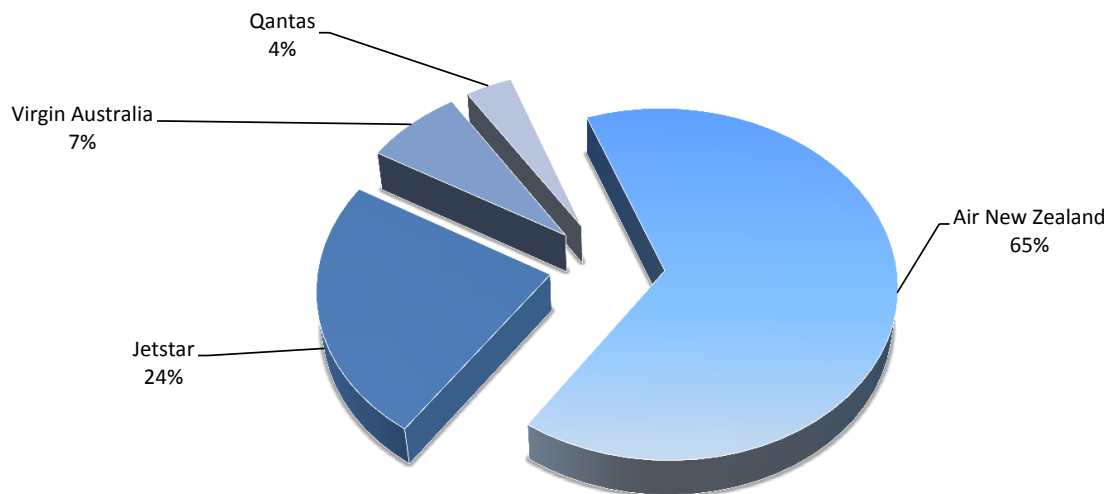
Airlines by Air Transport Movements (ATMs)

Airline	Movements
Air New Zealand	3736
Jetstar	959
Virgin Australia	308
Qantas	154



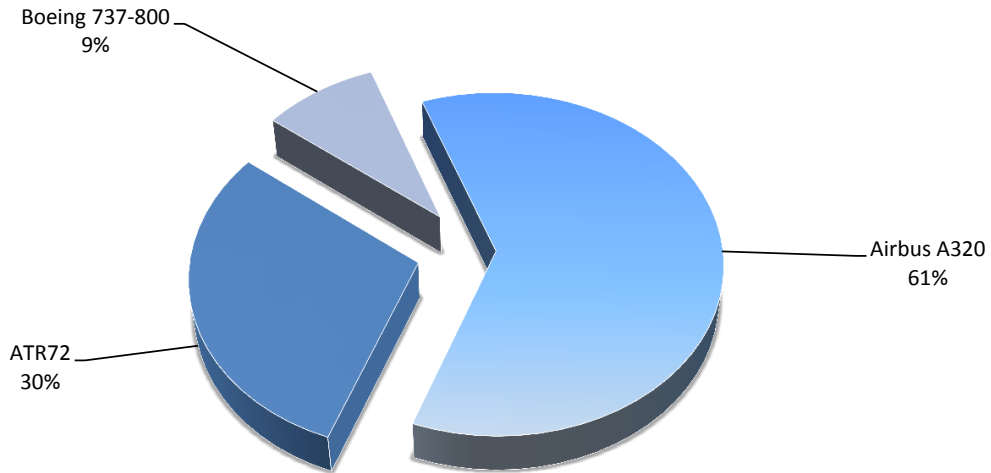
Airlines by Seats

Airline	Seats
Air New Zealand	472703
Jetstar	172620
Virgin Australia	54032
Qantas	25872



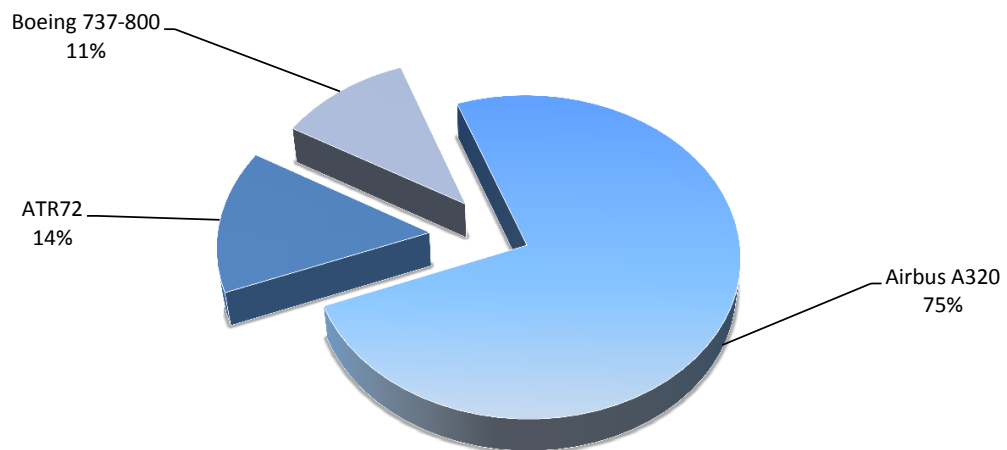
Aircraft Types by Air Transport Movements (ATMs)

Airline	Movements
Airbus A320	3157
ATR72	1538
Boeing 737-800	462



Aircraft Types by Seats

Airline	Seats
Airbus A320	540807
ATR72	104516
Boeing 737-800	79,904

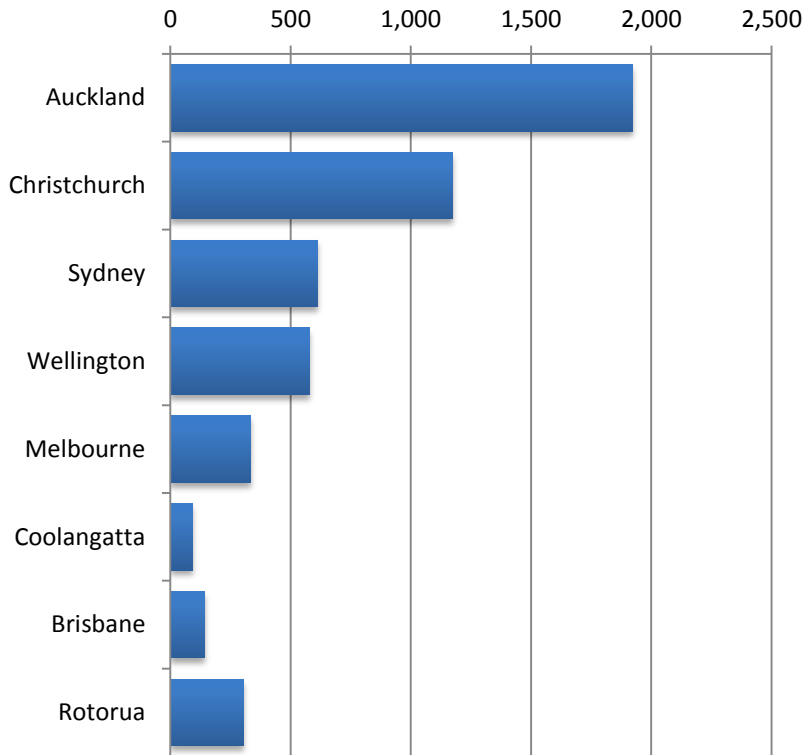


QUEENSTOWN INTERNATIONAL AIRPORT

PEAK WEEK DEPARTURE FREQUENCIES - BY CARRIER

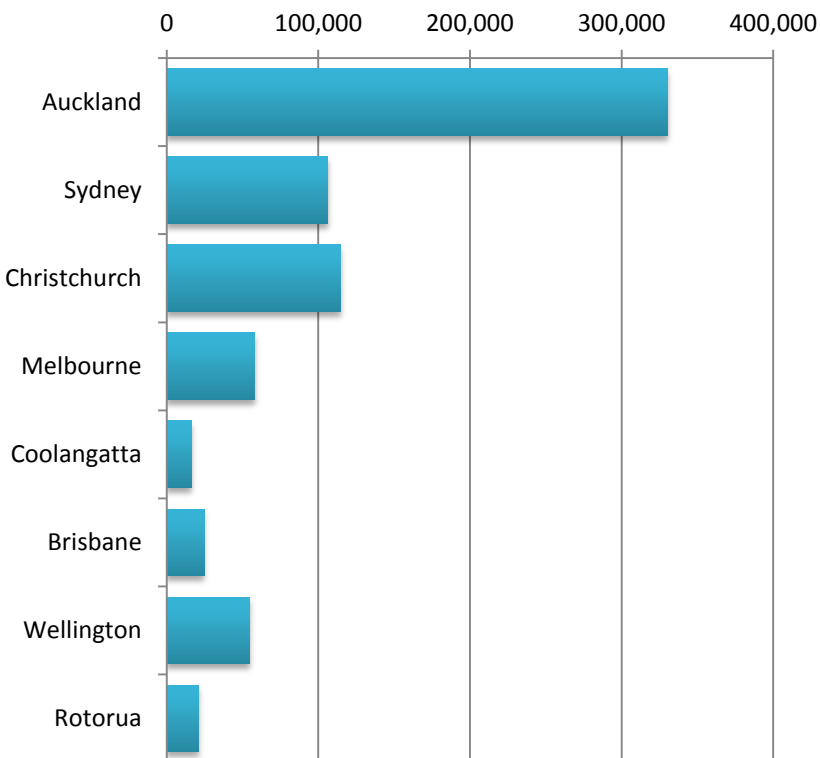
OPERATOR	AIRPORT	W13		W14		SEATS +/-	ATMS +/-		
		SEATS	ATMS	SEATS	ATMS				
JQ	Jetstar	AKL	Auckland International	2,832	16	2,700	15	-132	-1
		MEL	Melbourne	708	4	720	4	12	0
		OOL	Gold Coast Coolangatta	0	0	540	3	540	3
		SYD	Sydney Kingsford Smith	531	3	540	3	9	0
JQ Total		4,071	23	4,500	25	429	2		
NZ	Air New Zealand	AKL	Auckland International	5,547	33	5,376	32	-171	-1
		CHC	Christchurch International	2,552	29	2,804	28	252	-1
		MEL	Melbourne	672	4	1,008	6	336	2
		ROT	Rotorua International Airport	476	7	476	7	0	0
		SYD	Sydney Kingsford Smith	672	4	1,008	6	336	2
		WLG	Wellington International	1,020	15	1,320	15	300	0
NZ Total		10,939	92	11,992	94	1,053	2		
QF	Qantas	SYD	Sydney Kingsford Smith	504	3	672	4	168	1
QF Total		504	3	672	4	168	1		
VA	Virgin Australia	BNE	Brisbane International	528	3	704	4	176	1
		SYD	Sydney Kingsford Smith	352	2	704	4	352	2
VA Total		880	5	1,408	8	528	3		

Air Transport Movements by Destination



Destination	ATM'S
Auckland	1,922
Christchurch	1,174
Sydney	613
Wellington	577
Melbourne	335
Coolangatta	90
Brisbane	141
Rotorua	304

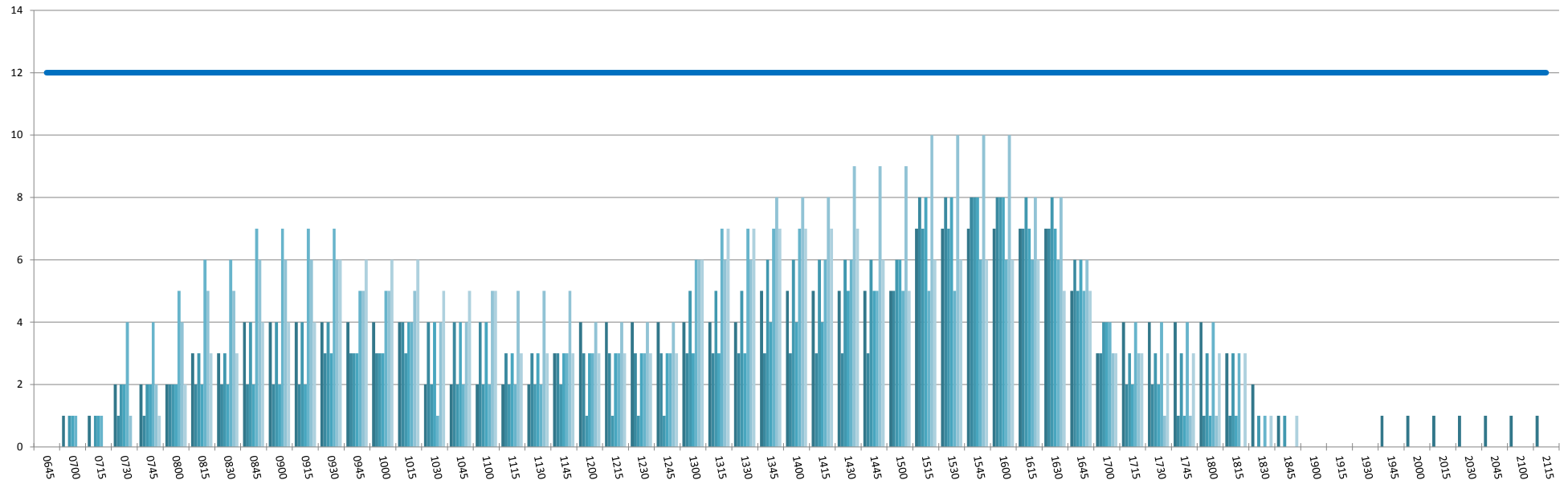
Air Transport Seats by Destination



Destination	SEATS
Auckland	330,036
Sydney	105,904
Christchurch	114,866
Melbourne	57,996
Coolangatta	16,200
Brisbane	24,640
Wellington	54,742
Rotorua	20,775

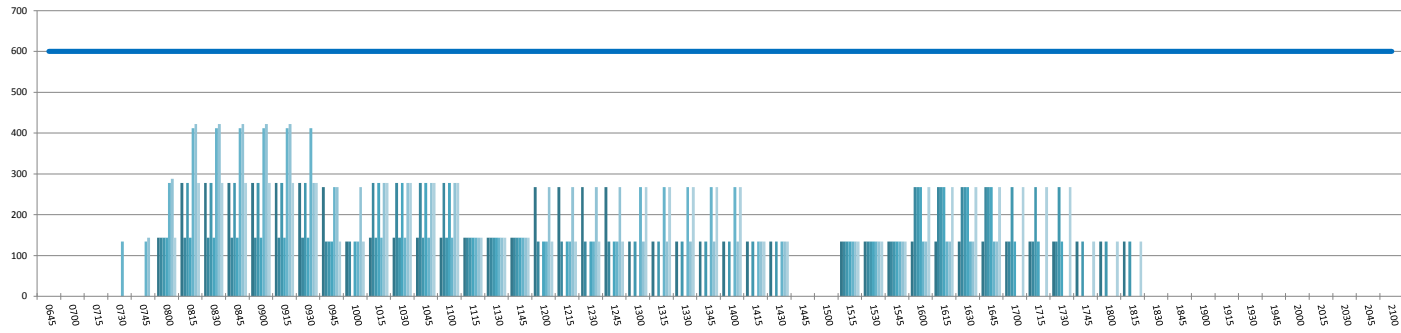
RUNWAY TOTAL UTILISATION PER 60 MINUTES (ROLLING EVERY 15 MINUTES)

Peak Week Movements per Hour - All times LOCAL



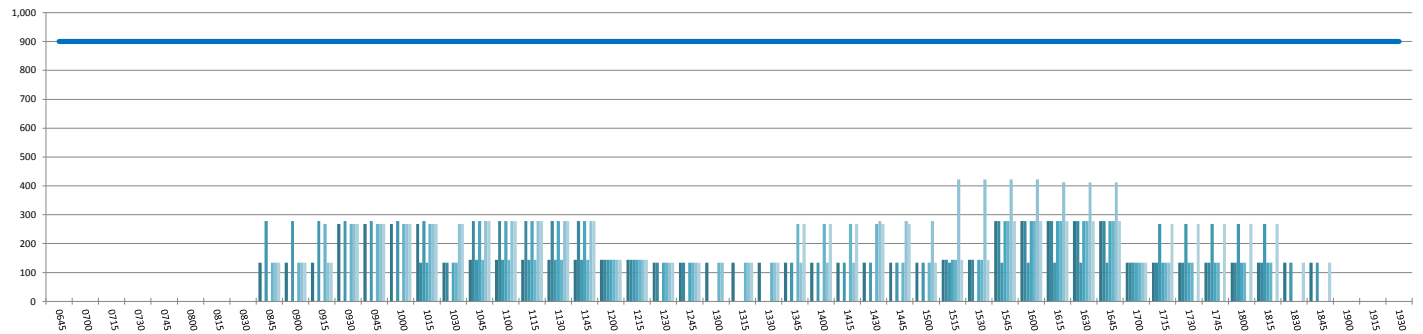
DOMESTIC TERMINAL ARRIVALS UTILISATION PER 60 MINUTES (ROLLING EVERY 15 MINUTES)

Peak Week Movements per Hour - All times LOCAL



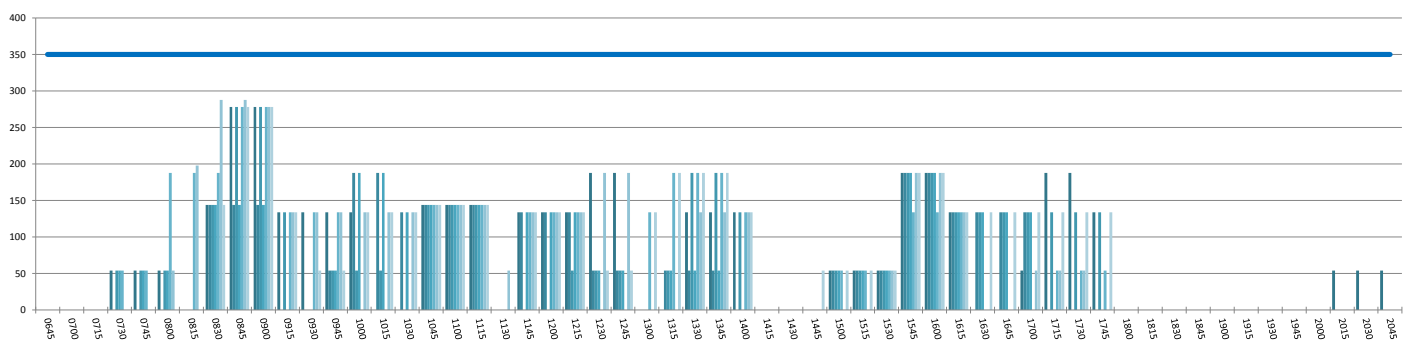
DOMESTIC TERMINAL DEPARTURES UTILISATION PER 60 MINUTES (ROLLING EVERY 15 MINUTES)

Peak Week Movements per Hour - All times LOCAL



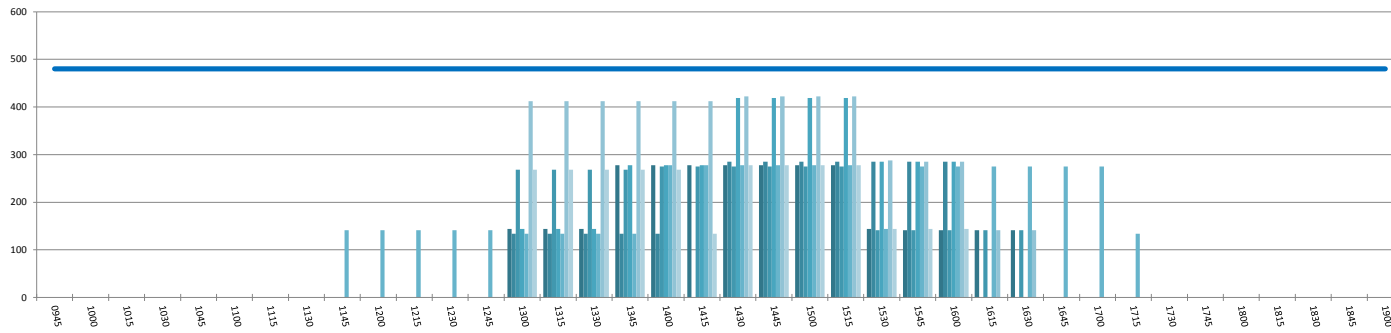
DOMESTIC TERMINAL ARRIVALS UTILISATION PER 30 MINUTES (ROLLING EVERY 15 MINUTES)

Peak Week Movements per Hour - All times LOCAL



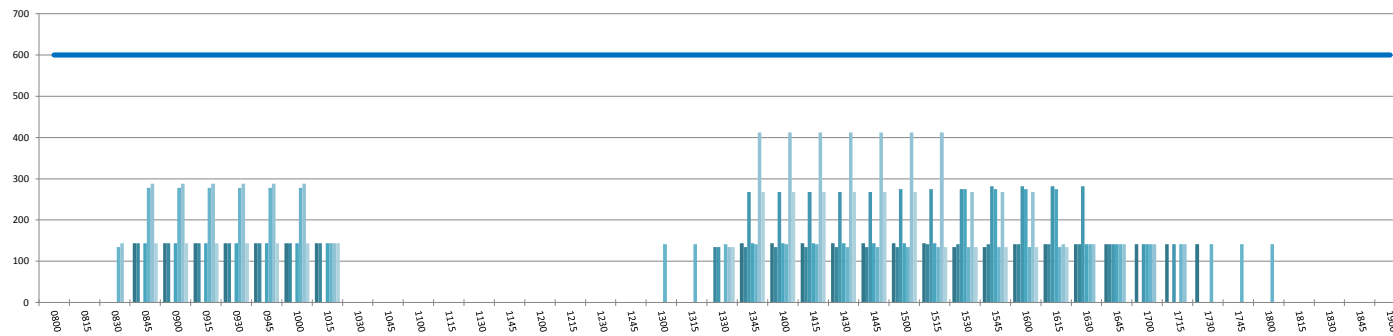
INTERNATIONAL TERMINAL ARRIVALS UTILISATION PER 60 MINUTES (ROLLING EVERY 15 MINUTES)

Peak Week Movements per Hour - All times LOCAL



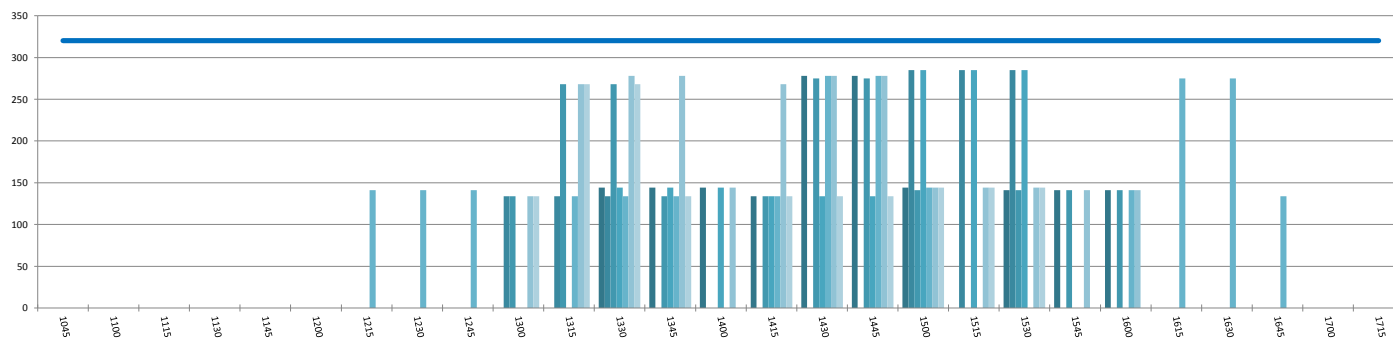
INTERNATIONAL TERMINAL DEPARTURES UTILISATION PER 60 MINUTES (ROLLING EVERY 15 MINUTES)

Peak Week Movements per Hour - All times LOCAL



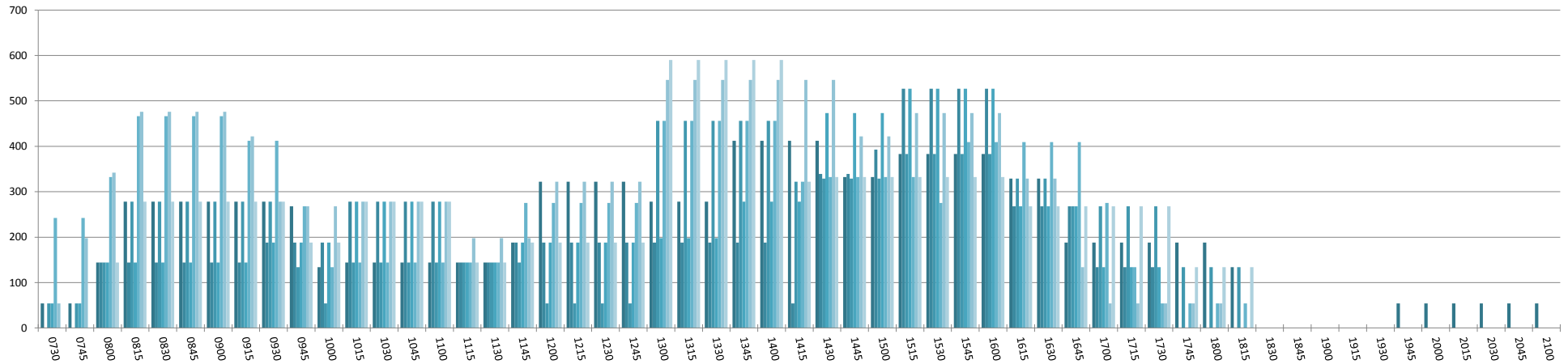
INTERNATIONAL TERMINAL ARRIVALS UTILISATION PER 30 MINUTES (ROLLING EVERY 15 MINUTES)

Peak Week Movements per Hour - All times LOCAL



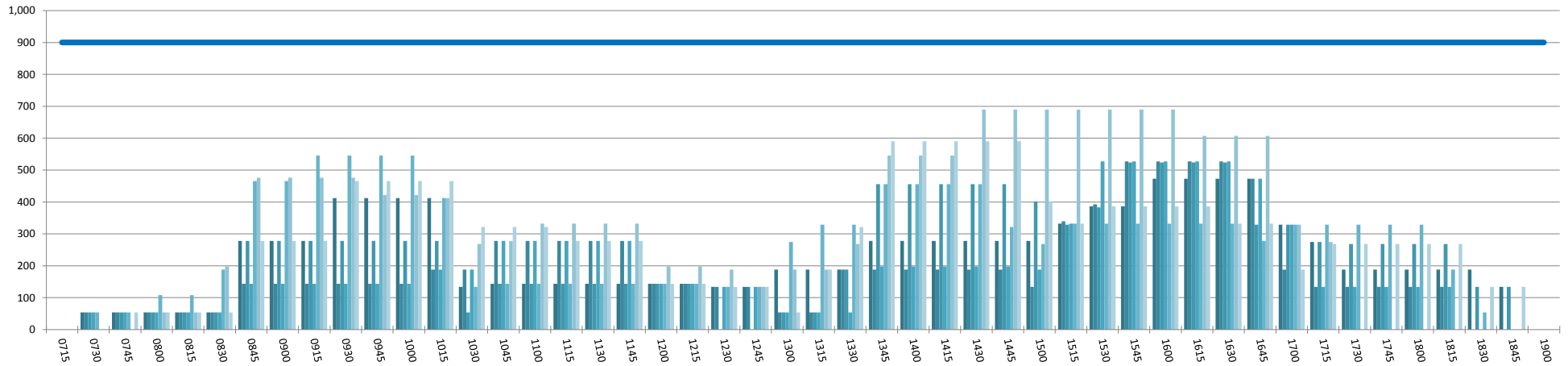
ENTIRE TERMINAL PASSENGER ARRIVALS UTILISATION PER 60 MINUTES (ROLLING EVERY 15 MINUTES)

Peak Week Movements per Hour - All times LOCAL



ENTIRE TERMINAL PASSENGER DEPARTURES UTILISATION PER 60 MINUTES (ROLLING EVERY 15 MINUTES)

Peak Week Movements per Hour - All times LOCAL



GLOSSARY OF TERMS

Air Transport Movement (ATM)	A scheduled or charter passenger or freight aircraft movement.
Allocation	The allocation of slots such that demand is constrained to fit within declared scheduling limits.
Common Travel Area (CTA)	Services to or from the Republic of Ireland and the Channel Islands.
Passenger ATM	A scheduled or charter <u>passenger</u> aircraft movement (ie, excluding all-cargo aircraft movements).
Scheduling Limits	Limiting parameters declared by the Airport Operator used in the coordination process.
Seats	The number of seats based on the aircraft configuration advised by the airline.
Peak Week	The Peak Week for W14 is 05 to 11 January 2015
Data Snapshot	All data used for this report was as held 20 October 2014

GUIDE TO HISTOGRAMS

The histograms show the pattern of traffic by time of day against the appropriate scheduling limit. Each time period consist of seven columns representing the days-of-week, Monday through Sunday.